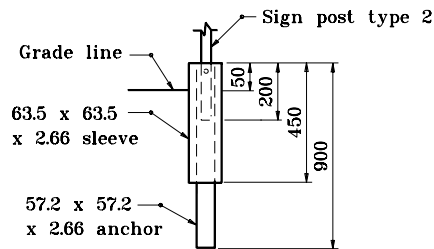


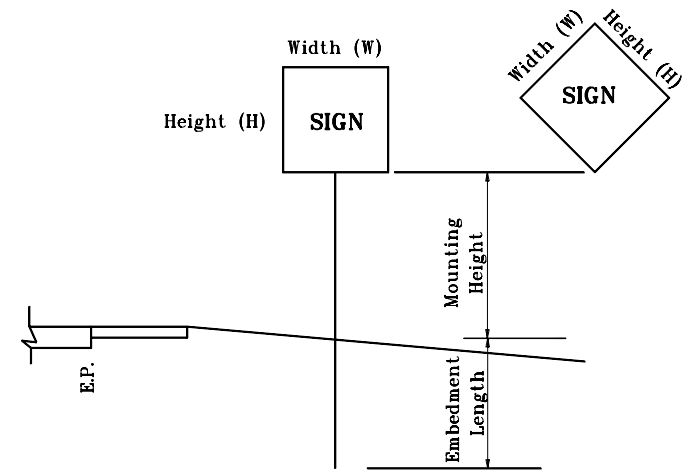
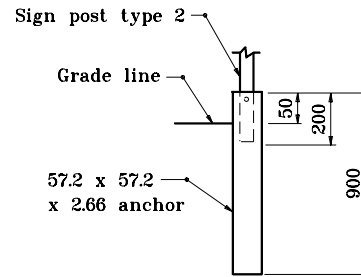
SQUARE POST

2.66 Thickness



SQUARE POST

2.66 Thickness

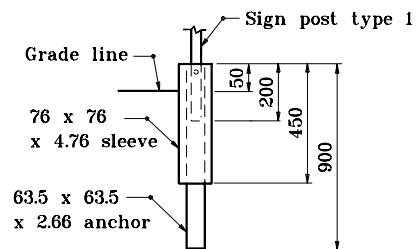


REINFORCED ANCHOR BASE

UNREINFORCED ANCHOR BASE

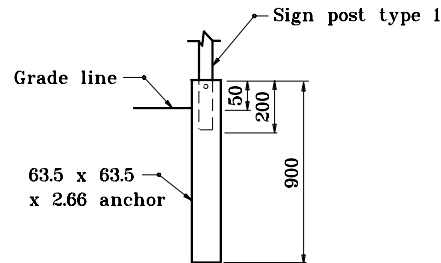
SQUARE POST

2.66 Thickness



SQUARE POST

2.66 Thickness



POST	TYPE	WALL THICKNESS	NO. OF POSTS PERMITTED IN 2.1 m PATH	EMBEDMENT LENGTH
U-CHANNEL	A , B		1 OR 2	1.2 m
SQUARE	1	2.66	1	ANCHOR BASE
	2	2.66	1 OR 2	

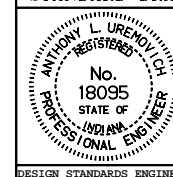
All dimensions are in mm unless otherwise specified.

INDIANA DEPARTMENT OF TRANSPORTATION

STEEL SIGN POSTS

SEPTEMBER 2000

STANDARD DRAWING NO. 802-SNGS-10



/s/ Anthony L. Uremovich 9-01-00
DESIGN STANDARDS ENGINEER DATE

/s/ Firooz Zandi 9-01-00
CHIEF HIGHWAY ENGINEER DATE

GENERAL NOTES:

1. See Standard Sheet 802-SNGS-09 for sign size and mounting height table.