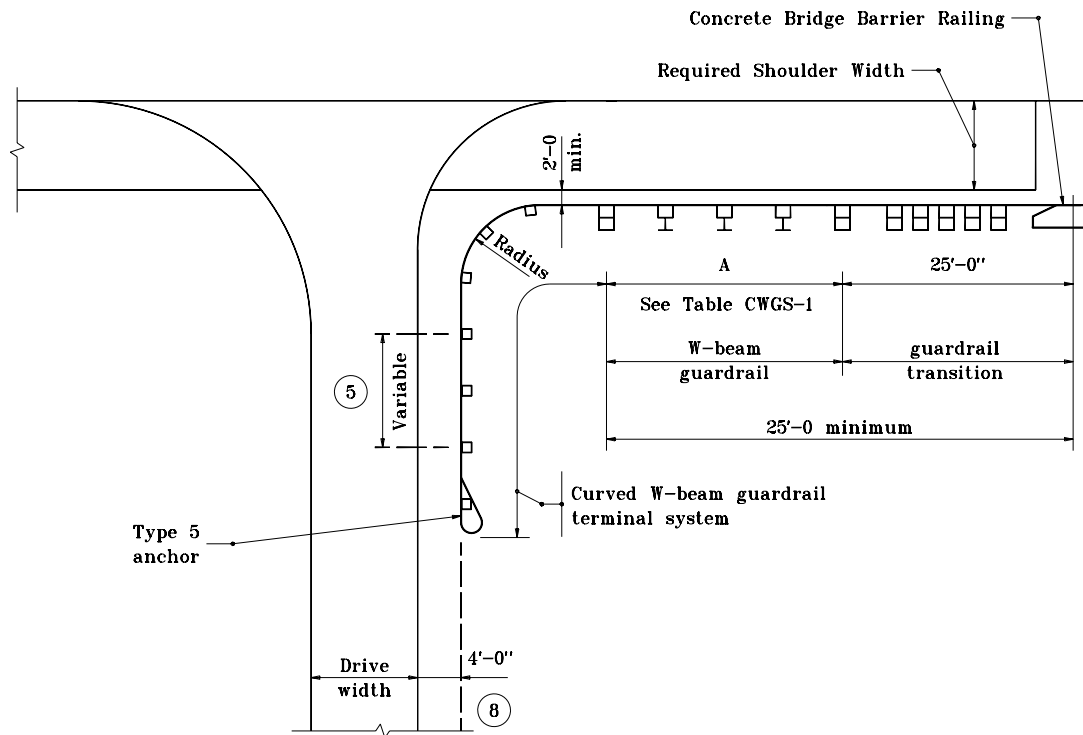



## NOTES

1. See Standard Drawing E 601-CWGS-03 for other General Notes.  
 ② See Standard Drawing E 601-CWGS-01 for Table CWGS-1.



## DRIVE INSTALLATION FOR W-BEAM GUARDRAIL AT BRIDGE END

INDIANA DEPARTMENT OF TRANSPORTATION	
CURVED W-BEAM GUARDRAIL TERMINAL SYSTEM	
SEPTEMBER 1998	
STANDARD DRAWING NO. E 601-CWGT-01	
	DETAILS PLACED IN THIS FORMAT 11-15-99  <u>s/ Anthony L. Uremovich</u> 11-15-99 DESIGN STANDARDS ENGINEER DATE
INDIANA PROFESSIONAL ENGINEER	<u>s/ Firooz Zandi</u> 11-15-99 CHIEF HIGHWAY ENGINEER ORIGINALLY APPROVED 9-01-98
DESIGN STANDARDS ENGINEER	