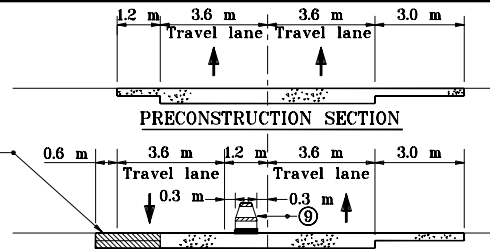


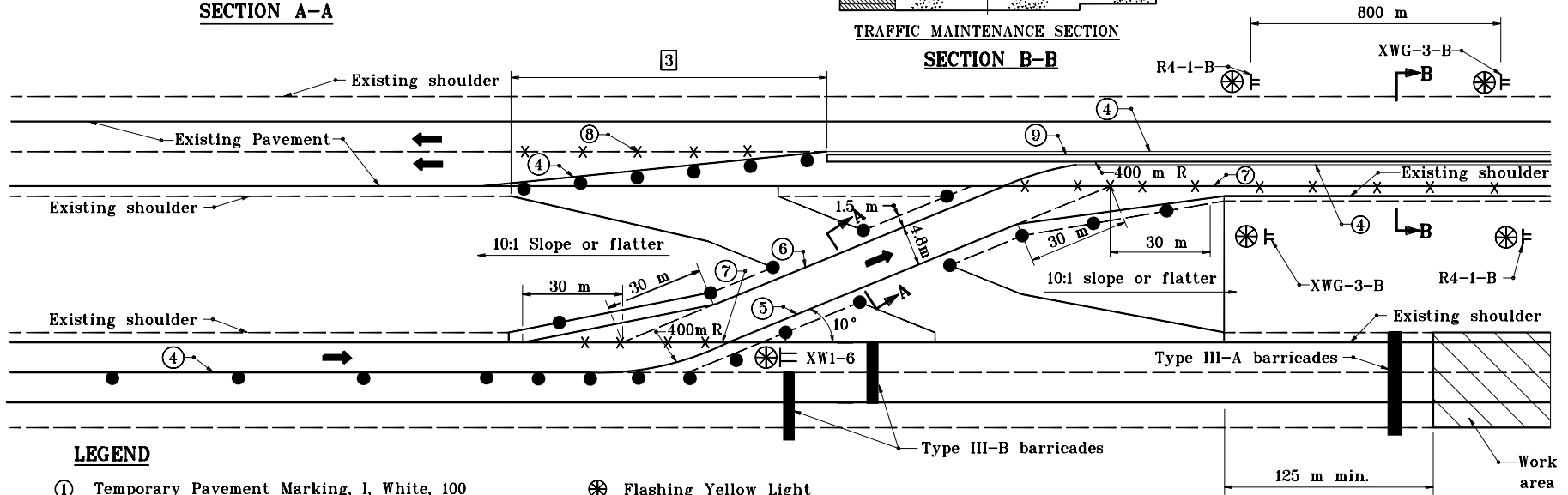
**SECTION A-A**

Refer to Maintenance of Traffic Plan for pavement section



**TRAFFIC MAINTENANCE SECTION**

**SECTION B-B**



**LEGEND**

- ① Temporary Pavement Marking, I, White, 100
- ② Temporary Pavement Marking, I, Yellow, 100
- ③ Temporary Pavement Marking, II, White, 100
- ④ Temporary Pavement Marking, II, Yellow, 100
- ⑤ Temporary Pavement Marking, II, White, 200
- ⑥ Temporary Pavement Marking, II, Yellow, 200
- ⑦ Line, Solid Yellow, 100, Remove
- ⑧ Line, Broken White, 100 Remove
- ⑨ Temporary Concrete Barrier or Channelizing Devices
- ⑩ Energy Absorbing Terminal

⊗ Flashing Yellow Light

↑ Flashing Arrow Sign

■ Type III Barricade

● Drum

≡ Construction Sign A

≡|| Construction Sign A & B

**NOTES:**

1. Signs XW6-3-B and R4-1-B shall be used only with temporary channelizing devices.
2. See Standard Drawing 611-TCC0-03 for signs legend.
- ③ See Standard Drawing 801-TCOV-02 for required length.

All dimensions are in mm unless otherwise specified.

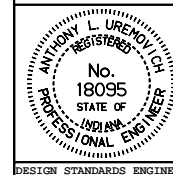
INDIANA DEPARTMENT OF TRANSPORTATION

**TEMPORARY CROSSOVERS**

**ENTRANCE DETAIL**

SEPTEMBER 2000

STANDARD DRAWING NO. **611-TCC0-02**



/s/ Anthony L. Uremovich 9-01-00  
DESIGN STANDARDS ENGINEER DATE

/s/ Firooz Zandi 9-01-00  
CHIEF HIGHWAY ENGINEER DATE

DESIGN STANDARDS ENGINEER