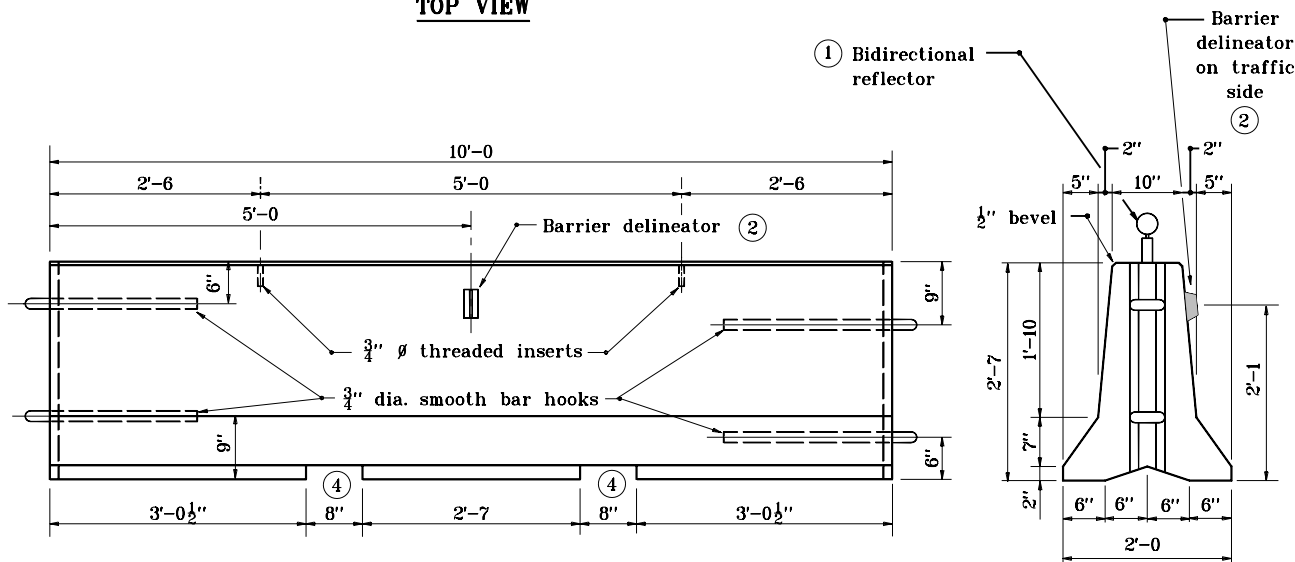


**TOP VIEW**



**FRONT VIEW**

**END VIEW**

**NOTES :**

- ① Bidirectional reflectors shall be attached as shown and shall be spaced at the number of feet which is equal to the number of miles per hour in the posted speed limit, with a minimum spacing of 20 ft.
- ② Barrier delineators shall be mounted on both sides of the barrier when the barrier is used to separate opposing traffic.
3. Bidirectional reflectors and barrier delineators shall not be used on temporary concrete barrier located along a tapered alignment when it is located behind drums or other reflective delineation devices.
- ④ The dimensions of the lifting slots are subject to adjustment as necessary to accommodate handling equipment.
5. For energy absorbing terminal, cz, use number of bays shown in Table No.1 for legal posted speed.
6. Maximum barrier taper rate flares for lane closures for legal posted speed are shown in Table No.2.

**TABLE NO. 1**

CONSTRUCTION ZONE SPEED	NUMBER OF BAYS REQUIRED
45 mph or less	3 Bay
Over 45 mph	6 Bay

**TABLE NO. 2**

CONSTRUCTION ZONE SPEED	TAPER FLARE RATE
55 mph	16 : 1
50 mph	14 : 1
45 mph	13 : 1
40 mph	11 : 1

INDIANA DEPARTMENT OF TRANSPORTATION	
<b>TEMPORARY CONCRETE BARRIER</b>	
<b>BARRIER DIMENSIONS</b>	
JANUARY 2001	
STANDARD DRAWING NO. <b>E 602-TCCB-01</b>	
	/s/ Anthony L. Uremovich 1-02-01 DESIGN STANDARDS ENGINEER DATE
	/s/ Firooz Zandi 1-02-01 CHIEF HIGHWAY ENGINEER DATE