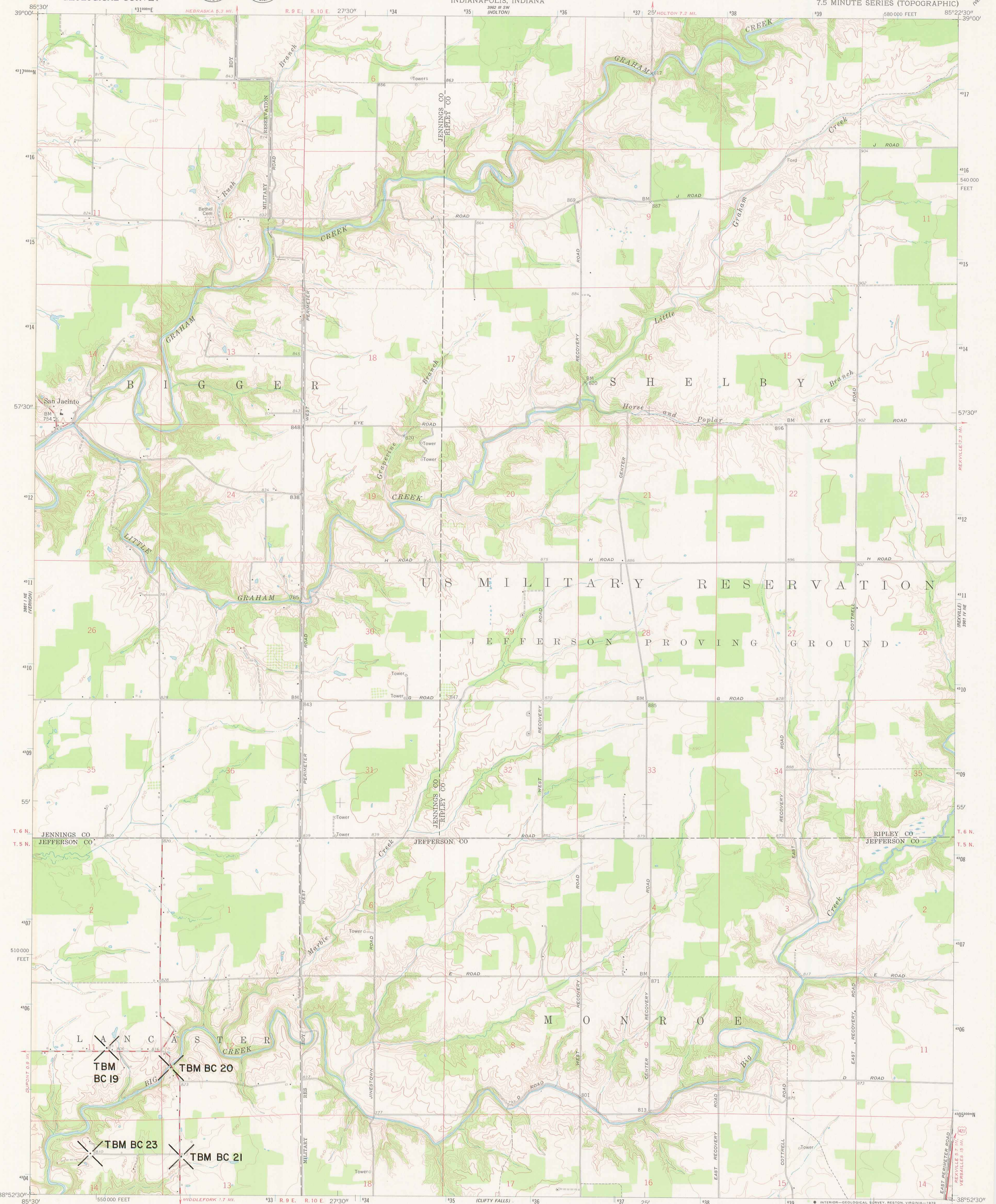


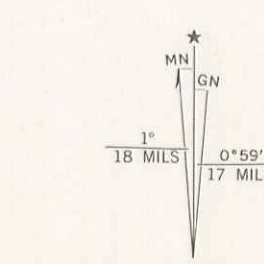


DUPLICATE COPY

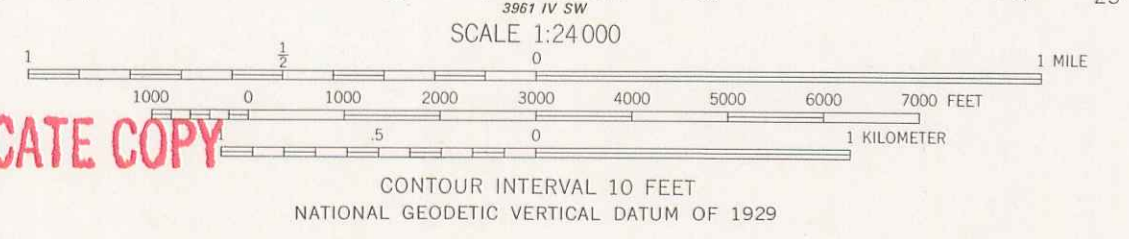
DUPLICATE COPY



Mapped, edited, and published by the Geological Survey  
Control by USGS  
Topography from aerial photographs by photogrammetric methods  
Aerial photographs taken 1956. Field check 1959  
Polyconic projection. 1927 North American datum  
10,000-foot grid based on Indiana coordinate system, east zone  
1000-meter Universal Transverse Mercator grid ticks,  
zone 16, shown in blue  
To place on the predicted North American Datum 1983  
move the projection lines 3 meters south and  
3 meters west as shown by dashed corner ticks  
There may be private inholdings within the boundaries of  
the National or State reservations shown on this map  
Unchecked elevations are shown in brown



DUPLICATE COPY



DUPLICATE COPY

ROAD CLASSIFICATION	
Heavy-duty	Light-duty
Medium-duty	Unimproved dirt
U.S. Route	

THIS MAP COMPLIES WITH NATIONAL MAP ACCURACY STANDARDS  
FOR SALE BY U.S. GEOLOGICAL SURVEY, RESTON, VIRGINIA 22092  
AND INDIANA DEPARTMENT OF NATURAL RESOURCES, INDIANAPOLIS, INDIANA 46204  
A FOLDER DESCRIBING TOPOGRAPHIC MAPS AND SYMBOLS IS AVAILABLE ON REQUEST

SAN JACINTO, IND.  
N 3852.5-W 8522.5/7.5

1959  
DMA 5961 IV NW-SERIES 851