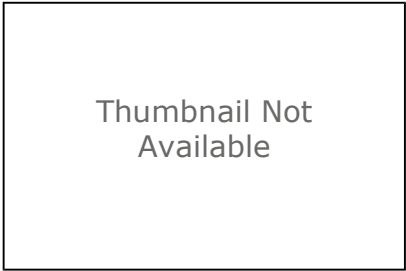


# Potentiometric Surface Map of the Bedrock Aquifers of Madison County, Indiana

Shapefile



Tags

There are no tags for this item.

## Summary

Display and/or analyses requiring spatial distribution of potentiometric surface elevations in Madison County.

## Description

This file is a digital geospatial polyline coverage of the bedrock potentiometric surface elevations mapped for Madison County Indiana.

## Credits

There are no credits for this item.

## Use limitations

See access and other constraints information.

## Extent

<b>West</b>	-85.867272	<b>East</b>	-85.567503
<b>North</b>	40.382598	<b>South</b>	39.940889

## Scale Range

<b>Maximum (zoomed in)</b>	1:5,000
<b>Minimum (zoomed out)</b>	1:150,000,000

## ArcGIS Metadata ►

## Topics and Keywords ►

\* CONTENT TYPE   Downloadable Data

*Hide Topics and Keywords ▲*

## Citation ►

**TITLE**   Potentiometric Surface Map of the Bedrock Aquifers of Madison County, Indiana

**EDITION**   1

**PRESENTATION FORMATS**   digital map

**SERIES**

**NAME**   Bedrock Potentiometric Surface Map

#### OTHER CITATION DETAILS

This map was compiled from multiple unpublished work maps based on USGS quadrangles at 1:24,000 scale: Alexandria, Anderson North, Anderson South, Elwood, Fairmount, Frankton, Gas City, Gaston, Gilman, Ingalls, Lapel, Middletown, Pendleton, Point Isabel, and Shirley.

[Hide Citation ▲](#)

## Citation Contacts ►

#### RESPONSIBLE PARTY

ORGANIZATION'S NAME Robert K. Schmidt, IDNR Division of Water, Resource Assessment Section  
CONTACT'S ROLE originator

#### RESPONSIBLE PARTY

ORGANIZATION'S NAME Indiana Department of Natural Resources, Division of Water  
CONTACT'S ROLE publisher

#### CONTACT INFORMATION ►

##### ADDRESS

DELIVERY POINT Indianapolis, Indiana, USA

[Hide Contact information ▲](#)

[Hide Citation Contacts ▲](#)

## Resource Details ►

DATASET LANGUAGES Undetermined ()

DATASET CHARACTER SET utf8 - 8 bit UCS Transfer Format

STATUS completed

SPATIAL REPRESENTATION TYPE vector

\*PROCESSING ENVIRONMENT Microsoft Windows XP Version 5.1 (Build 2600) Service Pack 3; Esri ArcGIS 10.2.0.3348

#### ARCGIS ITEM PROPERTIES

\*NAME BED\_PSM\_Madison\_Co\_IN

\*SIZE 0.397

\*LOCATION file:///iotfilp19pw\dnr\dow\TS\Water\_Resources\_and\_Rights\!  
Potentiometric\Madison\1\_Web\_Products\Zip\_Products\BED\_PSM\_Madison\_Co\_IN.shp

\*ACCESS PROTOCOL Local Area Network

[Hide Resource Details ▲](#)

## Extents ►

#### EXTENT

##### GEOGRAPHIC EXTENT

##### BOUNDING RECTANGLE

EXTENT TYPE Extent used for searching

\*WEST LONGITUDE -85.867272

\*EAST LONGITUDE -85.567503

\*NORTH LATITUDE 40.382598

\*SOUTH LATITUDE 39.940889

EXTENT CONTAINS THE RESOURCE Yes

#### EXTENT IN THE ITEM'S COORDINATE SYSTEM

\* WEST LONGITUDE 596769.246300  
\* EAST LONGITUDE 621600.254800  
\* SOUTH LATITUDE 4422166.280800  
\* NORTH LATITUDE 4470847.089100  
\* EXTENT CONTAINS THE RESOURCE Yes

[Hide Extents ▲](#)

## Resource Points of Contact ►

#### POINT OF CONTACT

INDIVIDUAL'S NAME Robert K. Schmidt  
ORGANIZATION'S NAME Indiana Department of Natural Resources, Division of Water  
CONTACT'S POSITION Resource Assessment Section  
CONTACT'S ROLE point of contact

#### CONTACT INFORMATION ►

##### PHONE

VOICE 317-232-4160  
FAX 317-233-4579

##### ADDRESS

DELIVERY POINT 402 W. Washington Street W264  
CITY Indianapolis  
ADMINISTRATIVE AREA Indiana  
POSTAL CODE 46204  
COUNTRY US  
E-MAIL ADDRESS [rschmidt@dnr.IN.gov](mailto:rschmidt@dnr.IN.gov)

##### HOURS OF SERVICE

8:15am - 4:15pm M-F except Government Holidays

[Hide Contact information ▲](#)

[Hide Resource Points of Contact ▲](#)

## Resource Maintenance ►

#### RESOURCE MAINTENANCE

UPDATE FREQUENCY not planned

[Hide Resource Maintenance ▲](#)

## Resource Constraints ►

#### LEGAL CONSTRAINTS

ACCESS CONSTRAINTS other restrictions

#### OTHER CONSTRAINTS

The Indiana Department of Natural Resources, Division of Water has compiled this data set using data believed to be reasonably accurate. However, the Division makes no representation as to the accuracy, completeness, or usefulness of the data or data set. A degree of error is inherent in all maps. This map is intended for use only at the published scale. Reference to any specific commercial product, process, or service does not constitute an endorsement, recommendation, or favoring by the Division. Copyright 2014, Indiana Department of Natural Resources, Division of Water All Rights Reserved Any copying, adaptation, or

distribution of these data without the express written consent of the Indiana Department of Natural Resources, Division of Water is discouraged.

#### CONSTRAINTS

##### LIMITATIONS OF USE

See access and other constraints information.

[Hide Resource Constraints](#) ▲

## Spatial Reference ►

#### ARCGIS COORDINATE SYSTEM

\*TYPE Projected

\*GEOGRAPHIC COORDINATE REFERENCE GCS\_North\_American\_1983

\*PROJECTION NAD\_1983\_UTM\_Zone\_16N

\*COORDINATE REFERENCE DETAILS

##### PROJECTED COORDINATE SYSTEM

WELL-KNOWN IDENTIFIER 26916

X ORIGIN -5120900

Y ORIGIN -9998100

XY SCALE 450445547.3910538

Z ORIGIN -100000

Z SCALE 10000

M ORIGIN -100000

M SCALE 10000

XY TOLERANCE 0.001

Z TOLERANCE 0.001

M TOLERANCE 0.001

HIGH PRECISION true

LATEST WELL-KNOWN IDENTIFIER 26916

WELL-KNOWN TEXT PROJCS["NAD\_1983\_UTM\_Zone\_16N",GEOGCS["GCS\_North\_American\_1983",DATUM["D\_North\_American\_1983",SPHEROID["GRS\_1980",6378137.0,298.257222101]],PRIMEM["Greenwich",0.0],UNIT["Degree",0.0174532925199433]],PROJECTION["Transverse\_Mercator"],PARAMETER["False\_Easting",500000.0],PARAMETER["False\_Northing",0.0],PARAMETER["Central\_Meridian",-87.0],PARAMETER["Scale\_Factor",0.9996],PARAMETER["Latitude\_Of\_Origin",0.0],UNIT["Meter",1.0],AUTHORITY["EPSG",26916]]

#### REFERENCE SYSTEM IDENTIFIER

VALUE 26916

\*CODESPACE EPSG

\*VERSION 8.1.1

[Hide Spatial Reference](#) ▲

## Spatial Data Properties ►

#### VECTOR ►

\*LEVEL OF TOPOLOGY FOR THIS DATASET geometry only

##### GEOMETRIC OBJECTS

FEATURE CLASS NAME BED\_PSM\_Madison\_Co\_IN

\*OBJECT TYPE composite

\*OBJECT COUNT 50

[Hide Vector](#) ▲

ARCGIS FEATURE CLASS PROPERTIES ▶

FEATURE CLASS NAME	BED_PSM_Madison_Co_IN
*FEATURE TYPE	Simple
*GEOMETRY TYPE	Polyline
*HAS TOPOLOGY	FALSE
*FEATURE COUNT	50
*SPATIAL INDEX	TRUE
*LINEAR REFERENCING	FALSE

*Hide ArcGIS Feature Class Properties ▲*

*Hide Spatial Data Properties ▲*

Data Quality ▶

SCOPE OF QUALITY INFORMATION ▶

RESOURCE LEVEL	dataset
----------------	---------

*Hide Scope of quality information ▲*

DATA QUALITY REPORT - COMPLETENESS OMISSION ▶

MEASURE DESCRIPTION	In conducting the mapping, the author(s) evaluated hundreds of water well records, especially those having relatively complete information on well location, static water level, well depth, ground elevation, and lithology. There were areas in the county with sparse information because of lack of well records or incomplete records.
---------------------	---

*Hide Data quality report - Completeness omission ▲*

DATA QUALITY REPORT - QUANTITATIVE ATTRIBUTE ACCURACY ▶

MEASURE DESCRIPTION	The mapping was conducted after a thorough documentation of well locations and water well record details.
---------------------	---

*Hide Data quality report - Quantitative attribute accuracy ▲*

DATA QUALITY REPORT - ABSOLUTE EXTERNAL POSITIONAL ACCURACY ▶

MEASURE DESCRIPTION	The locations of many wells were field checked and the locations posted on 7.5 minute topographic maps. Visual confirmation of wells was not always possible. Many locations were based only on the street address, driving directions, or other location information provided on the well record.
---------------------	--

*Hide Data quality report - Absolute external positional accuracy ▲*

*Hide Data Quality ▲*

Lineage ▶

PROCESS STEP ▶

DESCRIPTION	After selection of water well records was complete, specific well data and other maps and reports were considered in the mapping process. For example, ground elevation, static water level, well depth, aquifer top and bottom elevation and lithology were obtained from well records. Other maps and reports included regional potentiometric surface elevations, hydrogeologic settings, groundwater availability, unconsolidated topography, and surface topography.
-------------	---

[Hide Process step ▲](#)

PROCESS STEP ►

WHEN THE PROCESS OCCURRED 2013-11-30 00:00:00

DESCRIPTION

Data were selected by careful evaluation of water well records to determine if the wells were field located and if they contained complete and reasonable information.

[Hide Process step ▲](#)

SOURCE DATA ►

DESCRIPTION

Water well records from the IDNR-DOW well record database; USGS topography maps; various consultant geotechnical reports

SOURCE CITATION ►

TITLE PSM, Madison County, Indiana

PUBLICATION DATE 2014-03-01 01:00:00

EDITION 1

SERIES

NAME Bedrock Potentiometric Surface Map

ISSUE PSM 37-B

RESPONSIBLE PARTY

ORGANIZATION'S NAME IDNR Division of Water, Resource Assessment Section

INDIVIDUAL'S NAME Robert K. Schmidt

CONTACT'S ROLE originator

RESPONSIBLE PARTY

ORGANIZATION'S NAME Indiana Department of Natural Resources, Division of Water

CONTACT'S ROLE publisher

CONTACT INFORMATION ►

ADDRESS

DELIVERY POINT Indianapolis, IN

[Hide Contact information ▲](#)

[Hide Source citation ▲](#)

[Hide Source data ▲](#)

[Hide Lineage ▲](#)

## Geoprocessing history ►

PROCESS

PROCESS NAME

DATE 2014-04-15 11:42:57

TOOL LOCATION c:\program files\arcgis\desktop10.2\ArcToolbox\Toolboxes\Conversion  
Tools.tbx\FeatureClassToFeatureClass

COMMAND ISSUED

```
FeatureClassToFeatureClass J:\!  
Potentiometric\Madison\2_Shapefiles\Shapefiles_Misc_Analytical\BED_PSM_Madison_CO_IN.shp J:\!  
Potentiometric\Madison\2_Shapefiles\Shapefiles_FINAL_Map\Madison.gdb BED_PSM_Madison_Co_IN # "ID  
"ID" true true false 10 Double 0 10 ,First,#,J:\!  
Potentiometric\Madison\2_Shapefiles\Shapefiles_Misc_Analytical\BED_PSM_Madison_CO_IN.shp, ID,-1,-  
1;CONTOUR "CONTOUR" true true false 14 Double 0 14 ,First,#,J:\!  
Potentiometric\Madison\2_Shapefiles\Shapefiles_Misc_Analytical\BED_PSM_Madison_CO_IN.shp, CONTOUR,-  
1,-1" #
```

INCLUDE IN LINEAGE WHEN EXPORTING METADATA No

PROCESS

PROCESS NAME

DATE 2014-04-30 13:36:44

TOOL LOCATION c:\program files\arcgis\desktop10.2\ArcToolbox\Toolboxes\Data Management Tools.tbx\CopyFeatures

COMMAND ISSUED

```
CopyFeatures J:\!  
Potentiometric\Madison\2_Shapefiles\Shapefiles_FINAL_Map\Madison.gdb\BED_PSM_Madison_Co_IN J:\!  
Potentiometric\Madison\1_Web_Products\Zip_Products\BED_PSM_Madison_Co_IN.shp # 0 0 0
```

INCLUDE IN LINEAGE WHEN EXPORTING METADATA No

[Hide Geoprocessing history ▲](#)

## Distribution ►

DISTRIBUTOR ►

CONTACT INFORMATION

INDIVIDUAL'S NAME Robert K. Schmidt

ORGANIZATION'S NAME Indiana Department of Natural Resources, Division of Water

CONTACT'S POSITION Resource Assessment Section

CONTACT'S ROLE distributor

CONTACT INFORMATION ►

PHONE

VOICE 317-232-4160

FAX 317-233-4579

ADDRESS

DELIVERY POINT 402 W. Washington Street W264

CITY Indianapolis

ADMINISTRATIVE AREA Indiana

POSTAL CODE 46204

COUNTRY US

E-MAIL ADDRESS [rschmidt@dnr.IN.gov](mailto:rschmidt@dnr.IN.gov)

HOURS OF SERVICE

8:15am - 4:15pm M-F except Government Holidays

[Hide Contact information ▲](#)

[Hide Distributor ▲](#)

DISTRIBUTION FORMAT

\*NAME Shapefile

TRANSFER OPTIONS

\*TRANSFER SIZE 0.397

ONLINE SOURCE

LOCATION <http://www.in.gov/dnr/water/7256.htm>

*Hide Distribution ▲*

## Fields ►

DETAILS FOR OBJECT [BED\\_PSM\\_Madison\\_Co\\_IN](#) ►

\*TYPE Feature Class

\*ROW COUNT 50

FIELD [FID](#) ►

\*ALIAS FID

\*DATA TYPE OID

\*WIDTH 4

\*PRECISION 0

\*SCALE 0

\*FIELD DESCRIPTION

Internal feature number.

\*DESCRIPTION SOURCE

ESRI

\*DESCRIPTION OF VALUES

Sequential unique whole numbers that are automatically generated.

*Hide Field FID ▲*

FIELD [Shape](#) ►

\*ALIAS Shape

\*DATA TYPE Geometry

\*WIDTH 0

\*PRECISION 0

\*SCALE 0

\*FIELD DESCRIPTION

Feature geometry.

\*DESCRIPTION SOURCE

ESRI

\*DESCRIPTION OF VALUES

Coordinates defining the features.

*Hide Field Shape ▲*

FIELD [CONTOUR](#) ►

\*ALIAS CONTOUR

\*DATA TYPE Double

\*WIDTH 19

\*PRECISION 0

\*SCALE 0



[Hide Field CONTOUR ▲](#)

[Hide Details for object BED\\_PSM\\_Madison\\_Co\\_IN ▲](#)

[Hide Fields ▲](#)

## Metadata Details ►

METADATA LANGUAGE English (UNITED STATES)

METADATA CHARACTER SET utf8 - 8 bit UCS Transfer Format

SCOPE OF THE DATA DESCRIBED BY THE METADATA dataset

SCOPE NAME \*dataset

\*LAST UPDATE 2014-05-01

### ARCGIS METADATA PROPERTIES

METADATA FORMAT ArcGIS 1.0

STANDARD OR PROFILE USED TO EDIT METADATA FGDC

CREATED IN ARCGIS FOR THE ITEM 2014-04-15 11:42:50

LAST MODIFIED IN ARCGIS FOR THE ITEM 2014-05-01 10:58:13

### AUTOMATIC UPDATES

HAVE BEEN PERFORMED Yes

LAST UPDATE 2014-05-01 10:57:55

[Hide Metadata Details ▲](#)

## Metadata Contacts ►

### METADATA CONTACT

INDIVIDUAL'S NAME Robert K. Schmidt

ORGANIZATION'S NAME Indiana Department of Natural Resources, Division of Water

CONTACT'S ROLE point of contact

### CONTACT INFORMATION ►

#### PHONE

VOICE 317-232-4160

FAX 317-233-4579

#### ADDRESS

DELIVERY POINT 402 W. Washington Street W264

CITY Indianapolis

ADMINISTRATIVE AREA Indiana

POSTAL CODE 46204

COUNTRY US

E-MAIL ADDRESS rschmidt@dnr.IN.gov

### HOURS OF SERVICE

8:15am - 4:15pm M-F except Government Holidays

[Hide Contact information ▲](#)

[Hide Metadata Contacts ▲](#)

## Metadata Constraints ►

### LEGAL CONSTRAINTS

[ACCESS CONSTRAINTS](#)   other restrictions

### OTHER CONSTRAINTS

Access constraints: This metadata file is intended to accompany the subject geospatial set. This file may be updated, and the most recent version is available by contacting the IDNR Division of Water.

[Hide Metadata Constraints ▲](#)

## FGDC Metadata (read-only) ▼