

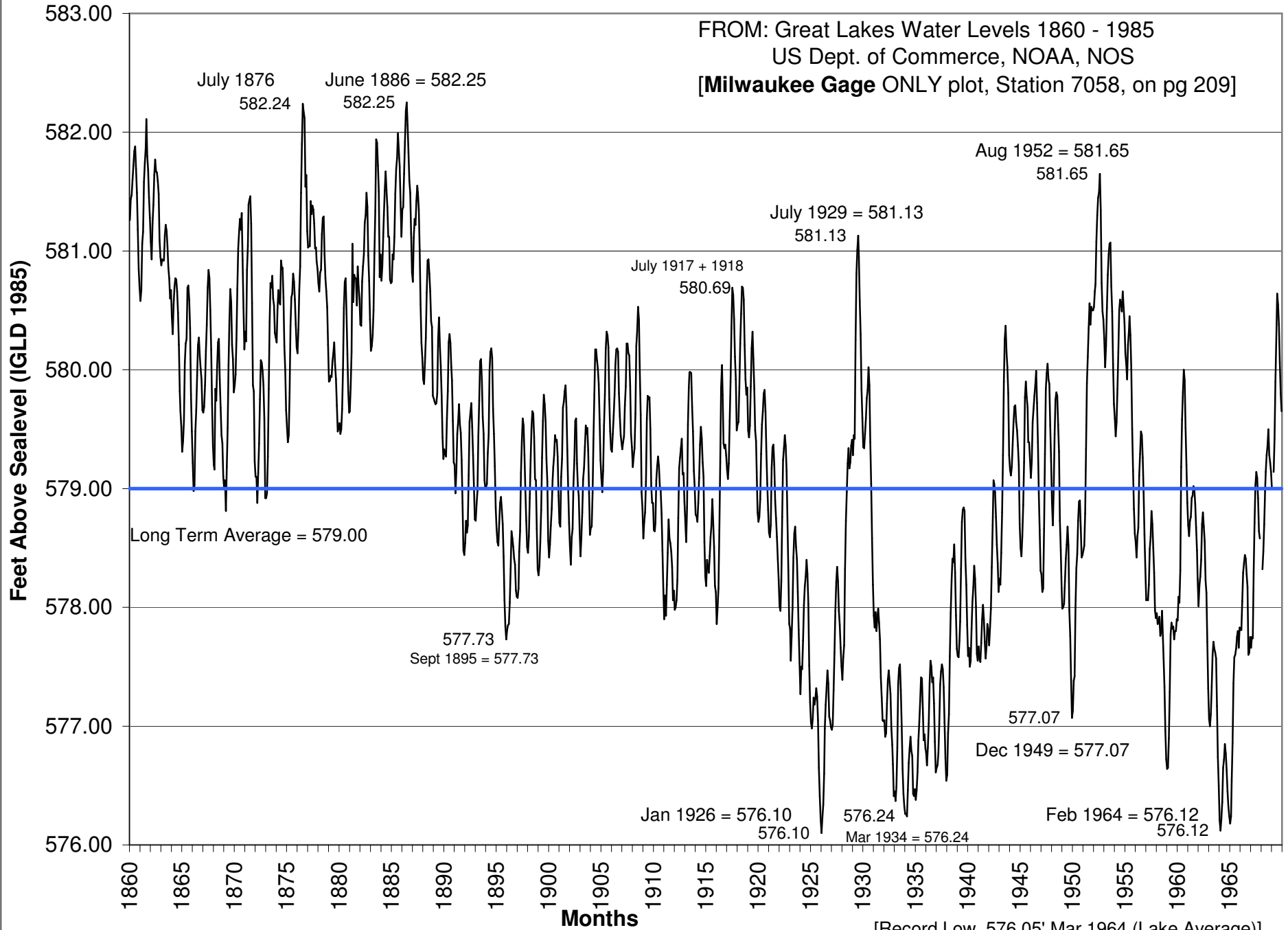
[Record High 582.35' Oct 1986 (Lake Average)]

Lake Michigan Water Levels 1860-1969 (IGLD 1985)

FROM: Great Lakes Water Levels 1860 - 1985

US Dept. of Commerce, NOAA, NOS

[Milwaukee Gage ONLY plot, Station 7058, on pg 209]



[Record Low 576.05' Mar 1964 (Lake Average)]