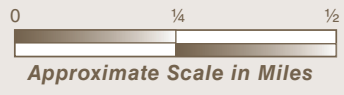
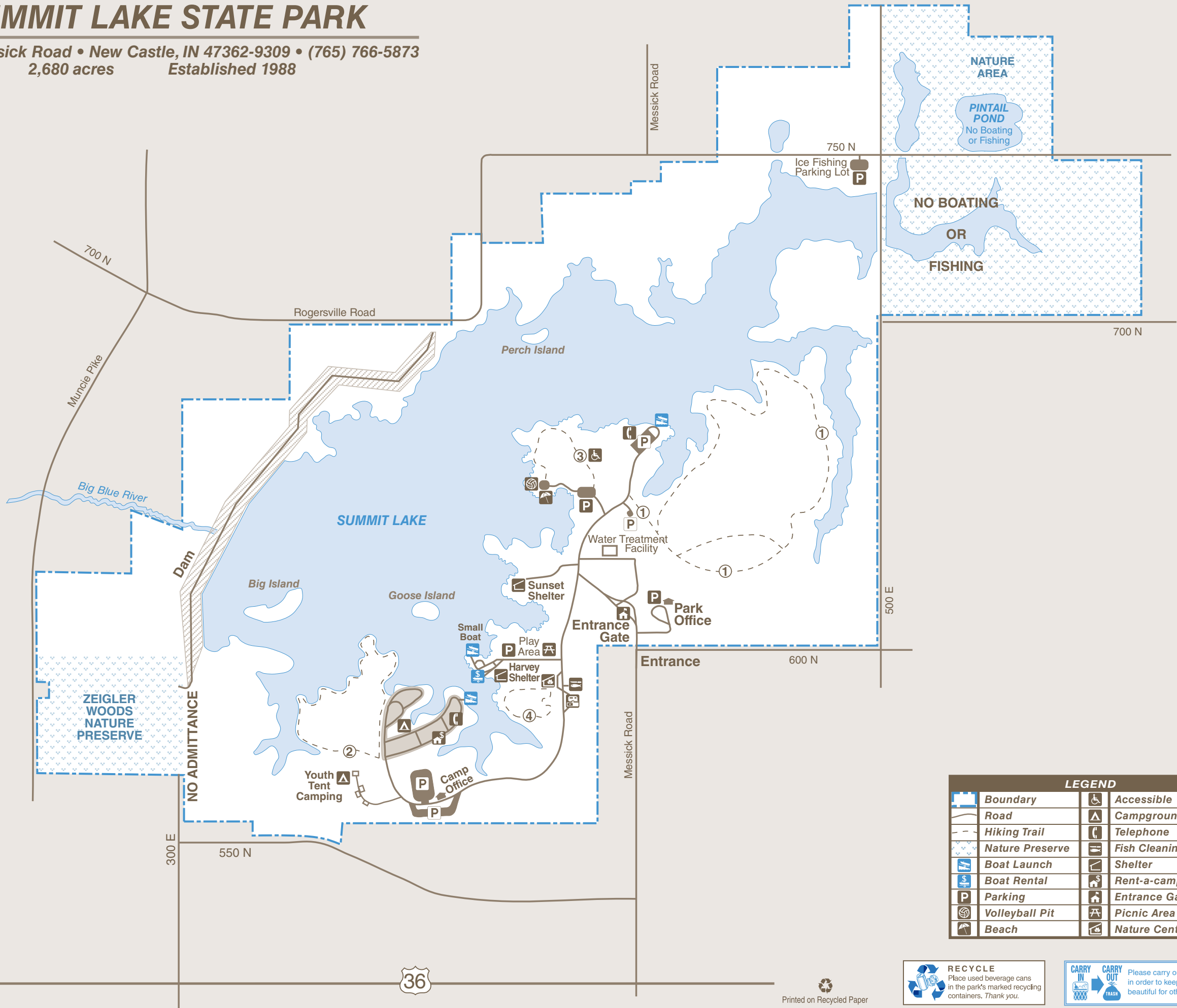
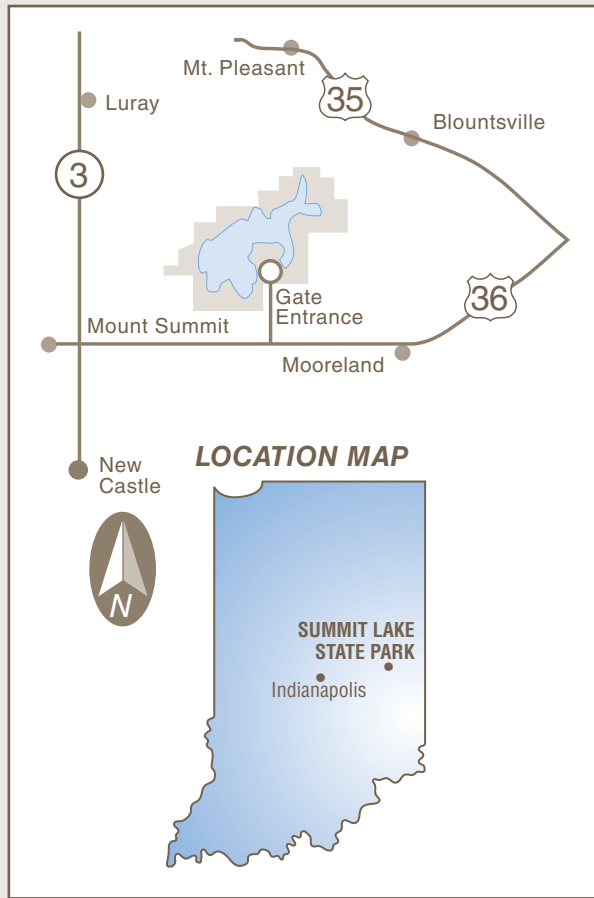


SUMMIT LAKE STATE PARK

5993 N. Messick Road • New Castle, IN 47362-9309 • (765) 766-5873
2,680 acres Established 1988



TRAIL TABLE		
TRAIL	MILEAGE	TRAIL TYPE
1 Prairie	2	Moderate
2 Campground	1.25	Moderate
3 Beach	.9	Accessible
4 Self-guided Nature Trail	.75	Moderate

LEGEND			
	Boundary		Accessible
	Road		Campground
	Hiking Trail		Telephone
	Nature Preserve		Fish Cleaning Station
	Boat Launch		Shelter
	Boat Rental		Rent-a-camp Cabin
	Parking		Entrance Gate
	Volleyball Pit		Picnic Area
	Beach		Nature Center

← To S.R. 3



Printed on Recycled Paper

RECYCLE
Place used beverage cans in the park's marked recycling containers. Thank you.

CARRY IN CARRY OUT
Please carry out all trash you produce in order to keep your park clean and beautiful for others to enjoy.

back to the 1950s, when Henry County residents began to talk of having a recreational facility close to home. By 1966 the Big Blue River Conservancy District started to make that dream reality. The group's goals included flood control along the river and waterway improvement, in addition to a recreational facility.

Construction of the flood-control structure at the headwaters of the Big Blue River that created Summit Lake began in the mid-1970s. When the gates of the dam closed in 1980, the man-made lake began to fill. In 1988, after several years of planning and construction, the Big Blue River Recreation Area was sold to the state of Indiana and became Summit Lake State Park. The name comes from being located at the highest elevation in the surrounding area and near the highest elevation in the state.

Present-day visitors will find an array of habitats at Summit Lake. Historically, the area was primarily forested. J. Hendricks, surveyor, wrote in 1821 that the area in the western portion of the park was prairie and wet prairie lands. Located just north of the town of New Castle and U.S. 36, the combination of the 800-acre lake, woodlands, old fields, wetlands and prairie restoration areas at the state park allows for an abundant array of flora and fauna species.

Bird watchers will be especially delighted to find the variety of interesting bird species reported during the migratory seasons as well as resident species. Some unusual bird species that have been observed include the marsh wren, least bittern, American bittern, king rail, osprey, bald eagle, black tern and great egret.

Summit Lake State Park is also the home of Henry County's only dedicated nature preserve, Zeigler Woods, which is located in the southwest corner of the park. Given to the state by The Nature Conservancy, the preserve is reflective of pre-settlement Indiana's native mesic upland forest communities. Zeigler Woods presents a rich exhibit of flora and fauna with little evidence of human disturbance. Unfortunately, such areas are becoming increasingly rare.

THIS IS YOUR PARK

Visitors shall observe the following rules, which are designed to fulfill the purpose for which state parks were established, namely, to preserve a primitive landscape in its natural condition for the public's use and enjoyment.

ACTIVITIES AND FACILITIES

BOATS—Rental rowboats, paddle boats, and canoes are available by the hour or day. Privately owned boats may be launched. Outboard motors are permitted to operate at idle speed only.

CAMPING—All sites are electric. Campground is equipped with flush toilets, hot water and showers. Occupancy is limited to 14 consecutive nights. Sites will accommodate trailers. Reservations are available through the Central Reservation System.

RENT-A-CAMP CABIN—One queen bed and one twin loft bed; sleeps 3 people. Two small benches; one ceiling light with fan and two electric outlets; modern comfort station with showers nearby. ADA accessible. Reservations through the Central Reservation System.

CONCESSIONS—Located at the beach.

FISHING—Fishing is allowed away from the beach area. A state license is required. No fishing on beach is permitted when beach ropes are in place.

HIKING—Easy-to-moderate marked trails are available for hiking all year.

INTERPRETIVE NATURALIST SERVICE—A seasonal naturalist is available from mid-May through Labor Day. Naturalist programming offered includes the Hoosier Quest outdoor adventure program. Additionally, cultural arts activities are scheduled for many summer weekends. Additional information may be obtained by visiting InterpretiveServices.IN.gov or (765) 766-5873.

PICNIC AREAS—Tables, grills, toilet facilities and playground are available.

SHELTER HOUSE—Reservations for the Harvey and Sunset shelters are available through the Central Reservation System.

SWIMMING—Swimming is permitted sunup to sundown, Memorial Day weekend to Labor Day. There is no charge for swimming. The bathhouse and beach open the Saturday before Memorial Day and operate no later than Labor Day.

RULES AND REGULATIONS

- Do not injure or damage any structure, rock, tree, flower, bird or wild animal within the park. Do NOT gather limbs, brush or trees (either dead or alive) for firewood because it rebuilds the natural humus.
- Any firearm (except lawfully possessed handguns), BB gun, air gun, CO₂ gun, bow and arrow, paint gun or spear gun in possession in a state park must be unloaded or un-nocked and stored in a case or locked within a vehicle, except when owner is participating in an activity authorized by written permit.
- Dogs and cats must be attended at all times and kept on a leash no longer than 6 feet.
- Vending or advertising without permission of the Department of Natural Resources is prohibited.
- Camping is permitted only in the campground. Youth groups must be under adult supervision.
- Fires shall be built only in designated places.
- Please comply with the Carry In/Carry Out trash policy in all day-use areas. Overnight guests must put waste in receptacles provided for that purpose.
- Motorists shall observe posted speed limits and park only in designated areas.
- Swimming is limited to places and times designated by the Department of Natural Resources.
- Drinking water should be taken only from pumps, hydrants or fountains provided for that purpose. This water is tested regularly for purity.
- Report lost or found articles to the park office.
- All motorized vehicles shall remain on paved roadway. Snowmobiles are prohibited.
- Use of metal detectors is prohibited, except on the swimming beach, with permit.
- Park closes from 11 p.m. until 7 a.m. No one is allowed in the park when closed, except campers using their sites.
- Outboard motors may be operated at idle speed only.

For a complete list of rules and regulations, inquire at park office.

CENTRAL RESERVATION SYSTEM



Reservations for all types of camping, family cabins, and shelters at state parks, reservoirs and forests can be made online or by calling toll-free.

Online: camp.IN.gov
Call: **1-866-6campIN**
(1-866-622-6746)

Reservations for the Indiana State Park Inns and Inn-operated cabins can be made online or by calling toll-free.

Reservations: **1-877-lodges1**
(1-877-563-4371)
Online: IndianalInns.com

FOR MORE INFORMATION



Write: Summit Lake State Park
5993 N. Messick Rd.
New Castle, IN 47362-9309

Call: (765) 766-5873
Online: dnr.IN.gov

SPECIAL NOTE

Receipts from admission and service charges are used to help defray the operation and maintenance costs of the lake. List of fees available in the lake office.

The programs, services, facilities, and activities of the Indiana Department of Natural Resources are available to everyone. DNR prohibits discrimination on the basis of race, color, national origin, age, sex, or disability. If you believe that you have been discriminated against in any program, activity, or facility as described above, or if you desire further information please write to: Department of Natural Resources, Executive Office, 402 W. Washington Street, W256, Indianapolis, IN 46204, (317) 232-4020.



Please carry out all trash you produce in order to keep your park clean and beautiful for others to enjoy!

DESCRIPTION OF TRAILS

1. **Prairie Trail** MODERATE (2 miles)—Starts in the open but soon enters the largest wood lot in the park. Hikers will see areas of oak-hickory mixed with cherry, ash and areas of beech-maple mix. The topography includes uplands and low glacial depressions. The remainder of the trail traverses open rolling established prairie, with views of the lake.
2. **Campground Trail** MODERATE (1.25 miles)—Starts in the small oak-hickory woods, with a glacial depression that stays wet year-round. The trail then goes through some scrub growth on the edge of the fields, then into open fields across rolling terrain, with excellent views of the lake.
3. **Beach Trail** & ACCESSIBLE (.9 mile)—This trail has a firm and stable surface with less than 2% cross-slopes, grades no greater than 5% and widths no less than 60 inches. The trail starts in a small wooded lot. The trees include maple, oak and cherry. The remainder of the trail is mostly open, with views of the lake across rolling topography.
4. **Self-Guided Nature Trail** MODERATE (.75 mile)—The trail begins in a field of prairie grasses punctuated with the bright colors of wildflowers in the summer. It winds through a meadow with young tuliptrees, second-growth shrubs and a wet area with a short boardwalk. The trail ends with a scenic view of the lake. Hikers may see waterfowl, swallows and other water-loving birds, depending on the season. A bench along the path offers a quiet resting place for bird watching.

PLEASE STAY ON MARKED TRAILS.

Please let wild animals remain wild. Feeding deer is prohibited. Feeding of all wild animals can result in harm to both animals and people. Animals who depend on handouts become a nuisance to park visitors and a danger to themselves. Please lock all food and coolers inside cars or campers.

DNR Indiana Department of Natural Resources

INDIANA

SUMMIT
LAKE
STATE PARK

Anglers, swimmers, bird watchers and wildlife photographers are among the many admirers of Summit Lake State Park. The 2,680 acres, including an 800-acre lake, shady wooded areas, and lots of open space, serves as home for many woodland animals and 100 species of birds.

Fish—and fishermen—love it, too. Bass, sunfish, crappies, yellow perch and channel catfish abound.

Boat rentals include paddleboats, rowboats and canoes. Guests can also launch their own craft at one of three boat ramps. The large swimming beach is open from Memorial Day to Labor Day. A modern bathhouse and concession building, including restrooms, is located at the beach.

Three hiking trails offer a good view of the lake. All campsites are electric with water hookups.

Summit Lake became Indiana's 19th state park on Jan. 9, 1988, but its history traces

01/2016