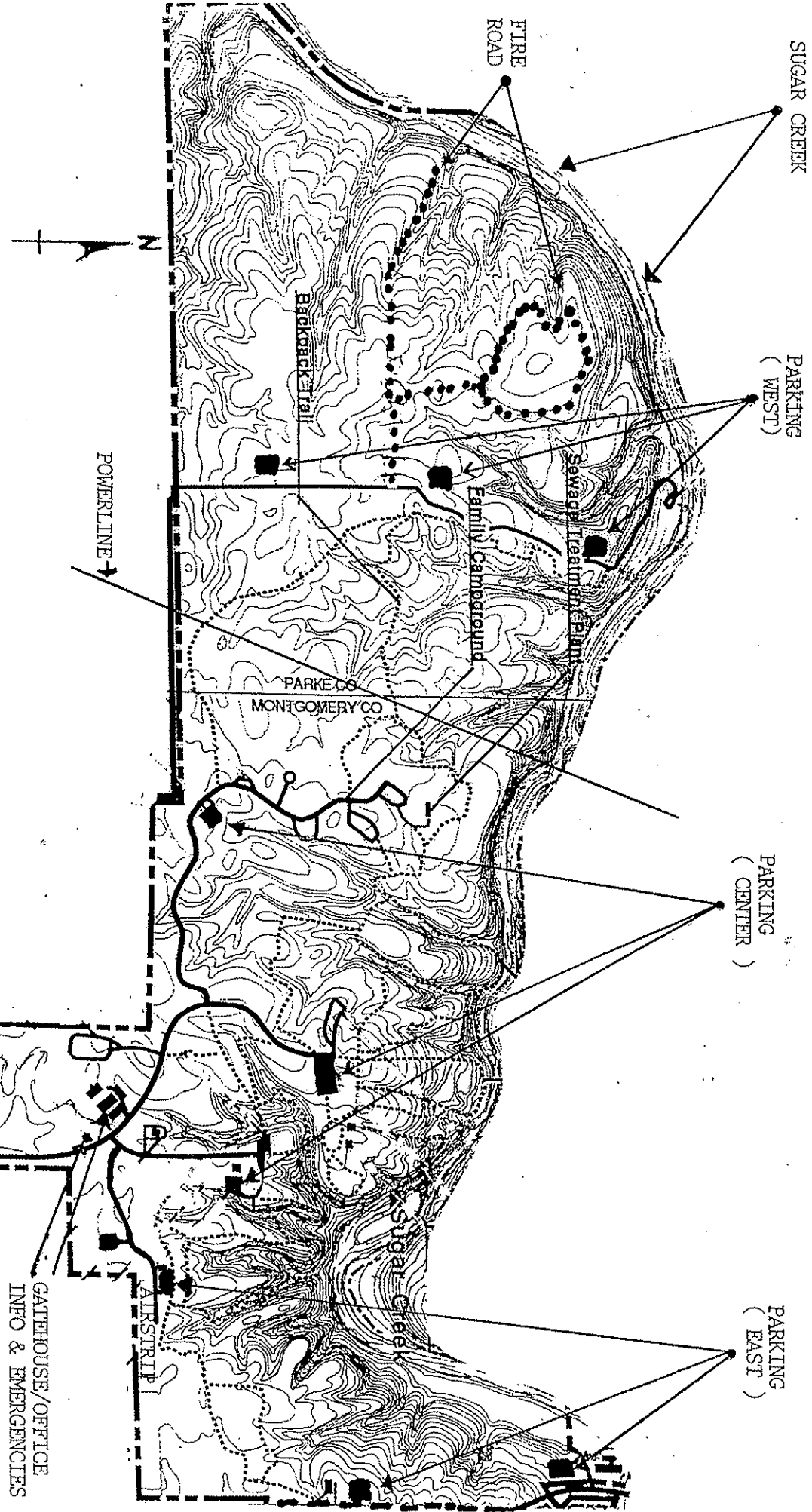


AREA #1 - ORANGE AREA - 1725 ACRES

EACH HUNTER IS RESPONSIBLE FOR DRAGGING THEIR HARVESTED DEER. DO NOT PARK ON PRIVATE PROPERTY. PARK ONLY IN DESIGNATED LOTS IN YOUR HUNT AREA. SEE THE MAP FOR PARKING AREAS. VEHICLES PARKED IMPROPERLY WILL BE TOWED AT THE OWNERS EXPENSE. SAFETY AREAS ARE MARKED WITH YELLOW CAUTION TAPE. DO NOT ENTER, OR DISCHARGE A FIREARM INTO OR NEAR THESE AREAS. USE EXTREME CAUTION.

AREA #1 IS LOCATED INSIDE SHADES STATE PARK. IT HAS MORE PARKING AND ROADS THAN ANY OTHER AREA. THIS IS THE ASSIGNED AREA FOR HUNTERS POSSESSING A HANDICAP LICENSE. IT HAS MORE ROADS AND LANDMARKS THAN ANY OTHER AREA. BOUNDARIES WILL BE MARKED WITH PARK SIGNS, PIPES, POSTS, FENCE, OR CREEKS AS INDICATED ON YOUR MAP ALONG WITH LIMITED ORANGE FLAGGING. USE YOUR MAP AND STAY ON PARK PROPERTY AT ALL TIMES.

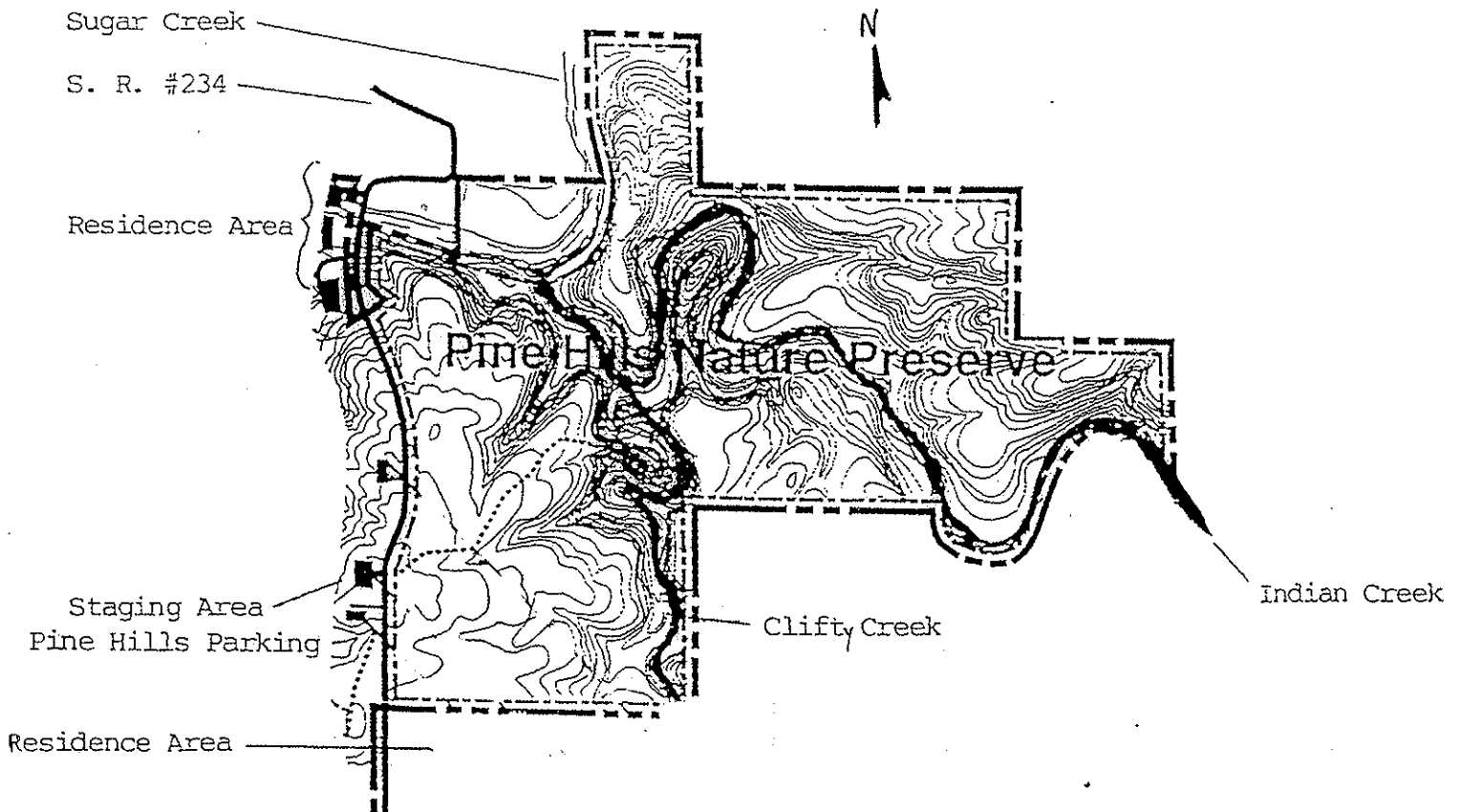


## AREA #2 – PINE HILLS AREA – GREEN AREA - 478 ACRES

EACH HUNTER IS RESPONSIBLE FOR DRAGGING THEIR HARVESTED DEER. DO NOT PARK ON PRIVATE PROPERTY. PARK ONLY IN DESIGNATED LOTS IN YOUR HUNT AREA. SEE THE MAP FOR PARKING AREAS. VEHICLES PARKED IMPROPERLY WILL BE TOWED AT THE OWNERS EXPENSE. SAFETY AREAS ARE MARKED WITH YELLOW CAUTION TAPE. DO NOT ENTER, OR DISCHARGE A FIREARM INTO OR NEAR THESE AREAS. USE EXTREME CAUTION.

AREA #2 IS THE PINE HILLS NATURE PRESERVE. IT IS A VERY RUGGED SECTION OF SHADES STATE PARK AND CONTAINS STEEP CLIFFS, HIGH HILLS, SEVERAL STREAMS AND LIMITED ACCESS. THIS MEANS THAT YOU WILL HAVE TO DRAG ANY DEER FOR A CONSIDERABLE DISTANCE. PLAN ACCORDINGLY.

BOUNDARIES WILL BE MARKED WITH PARK SIGNS, PIPES, POSTS, FENCE, OR CREEKS AS INDICATED ON YOUR MAP ALONG WITH LIMITED GREEN FLAGGING. USE YOUR MAP AND STAY ON PARK PROPERTY AT ALL TIMES.



AREA #3 - PEDESTAL ROCK AREA - PINK AREA - 883 ACRES

EACH HUNTER IS RESPONSIBLE FOR DRAGGING THEIR HARVESTED DEER. DO NOT PARK ON PRIVATE PROPERTY. PARK ONLY IN DESIGNATED LOT IN YOUR HUNT AREA. THIS AREA HAS ONLY ONE PARKING AREA. CARPOOLING WITH A 4X4 VEHICLE IS ENCOURAGED. VEHICLES PARKED IMPROPERLY WILL BE TOWED AT THE OWNERS EXPENSE. SAFETY AREAS ARE MARKED WITH YELLOW CAUTION TAPE. DO NOT ENTER, OR DISCHARGE A FIREARM INTO OR NEAR THESE AREAS. USE EXTREME CAUTION.

AREA #3 IS THE PEDESTAL ROCK NATURE PRESERVE. IT IS A VERY RUGGED SECTION OF SHADES STATE PARK AND CONTAINS STEEP CLIFFS, HIGH HILLS, SEVERAL STREAMS AND LIMITED ACCESS. THIS MEANS THAT YOU WILL HAVE TO DRAG ANY DEER FOR A CONSIDERABLE DISTANCE. PLAN ACCORDINGLY.

BOUNDARIES WILL BE MARKED WITH PARK SIGNS, PIPES, POSTS, FENCE, OR CREEKS AS INDICATED ON YOUR MAP ALONG WITH LIMITED PINK FLAGGING. USE YOUR MAP AND STAY ON PARK PROPERTY AT ALL TIMES.

