

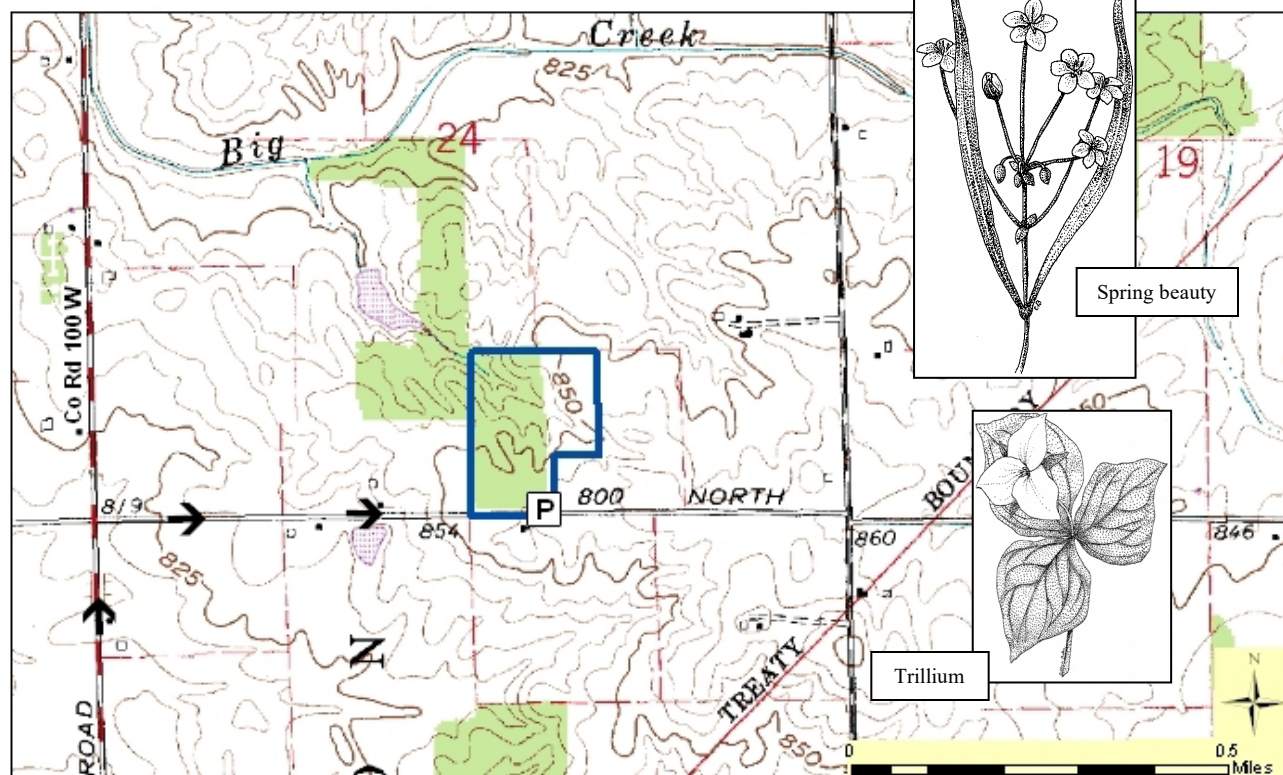
## Hammer Nature Preserve (Anna Brand Hammer)

County: Wells                      Size: 20 acres  
Ownership: ACRES Land Trust



### Location and Access

**Parking and trail.** From Uniondale on US 224 go north on CR 100W for 2 miles, then east for 0.5 mile on CR 800N. There is a parking area on the east side of the woods. A nature trail traverses the property.



**Description:** The preserve includes 14 acres of mesic upland forest. There is a particularly high incidence of hickory in this area. Other common trees include sugar maple, beech, black cherry, red oak, and ironwood. There are few numbers of white oak, black walnut, and sycamore. Spring beauty, purple cress, cut-leaved toothwort, bloodroot, trout lily, Dutchman's breeches, trilliums, and violets carpet the forest floor in spring. An intermittent stream wanders through the woods. Buttercups bloom along the stream's path. The remainder of the preserve is former farmland. Young trees have been planted to hasten the return to forest.

### Further Information:

ACRES Land Trust, 1802 Chapman Rd, Huntertown, IN 46748. (260) 637-2273. [www.acreslandtrust.org](http://www.acreslandtrust.org)  
Division of Nature Preserves Northeast Regional Ecologist, Ryan Smith: [rysmith1@dnr.in.gov](mailto:rysmith1@dnr.in.gov)