

# Boot Lake Nature Preserve

County: Elkhart      Size: 200.87 acres  
Ownership: City of Elkhart



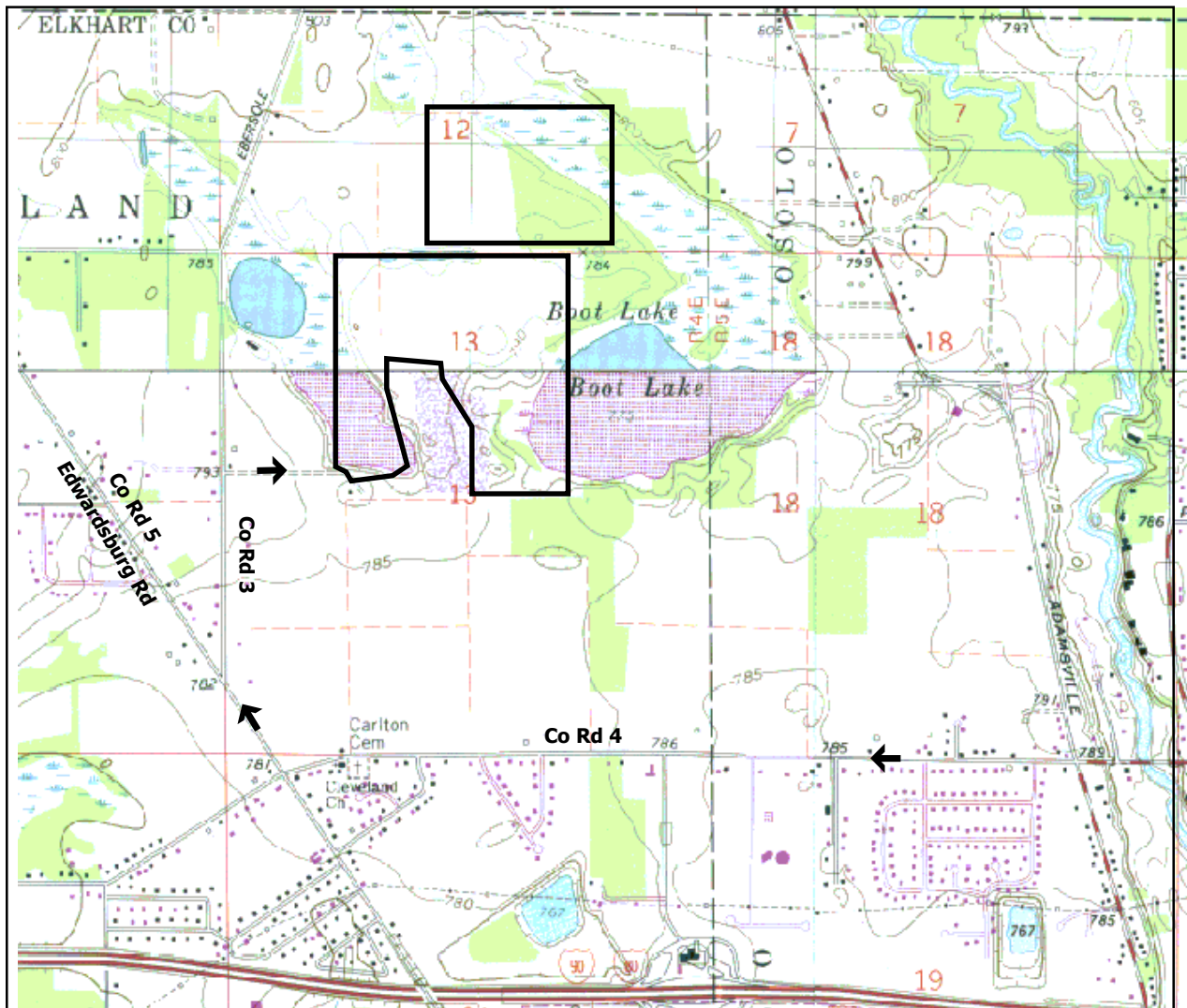
## Location and Access

**Parking and trail.** From the northside of Elkhart, take Co Rd 4 west to Co Rd 5 (Edwardsburg Rd), just past a cemetery, and turn right (northwest).

After a short distance the road splits. Take the right half (Co Rd 3) and go about 0.4 mi to Williams lane on the right. Park in the lot at the end of the lane.

An alternative is to take SR 19 north from Elkhart to Co Rd 4 (just past I-80/90 toll rd). Continue as above.

From the south: Take US 31 north to South Bend, then pick up US 20. Go east on US 20 toward Elkhart. Take the SR 19 North exit and go through Elkhart to Co Rd 4 (just past I-80/90). Turn left (west) and go about 2.4 mi to Co Rd 5 (Edwardsburg Rd). Continue as above. (cont.)



## Further Information:

City of Elkhart, Board of Public Works & Utilities. 1201 S. Nappanee St. Elkhart IN 46516. 574-293-2572.

[www.elkhartindiana.org](http://www.elkhartindiana.org).

Division of Nature Preserves. 402 W Washington St, Rm W267. Indianapolis, IN 46204-2739.

317-232-4054. [www.in.gov/dnr/naturepr](http://www.in.gov/dnr/naturepr).

# Boot Lake Nature Preserve

## Description:

This wetland area, a part of a larger 100-acre wetland complex, is made up of kettle lakes (formed by glaciation) that are in the process of naturally filling in, and have succeeded into rare types of wetlands known as hydric peaty muck flats and hydric peaty sand flats. These support disjunct Atlantic Coastal Plain plants, a number of which are rare. Also in the area are buttonbush swamps, upland woodlands and fields, and a prairie restoration site.

Some of the plants found here are a variety of rushes and sedges, blue joint grass, meadow beauty, sugar maple, American beech, and red oak. Sand hill cranes have nested here in recent years.

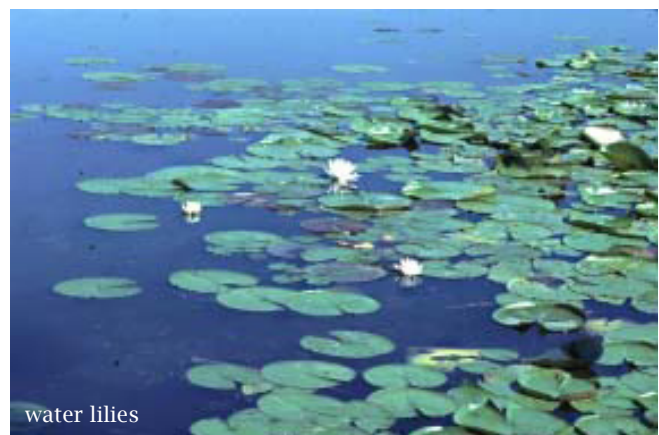
This preserve was purchased with funding from the Indiana Heritage Trust Project.



Northern Harrier



Boot Lake



water lilies