

## McClue Nature Preserve (Charles McClue)

County: Steuben

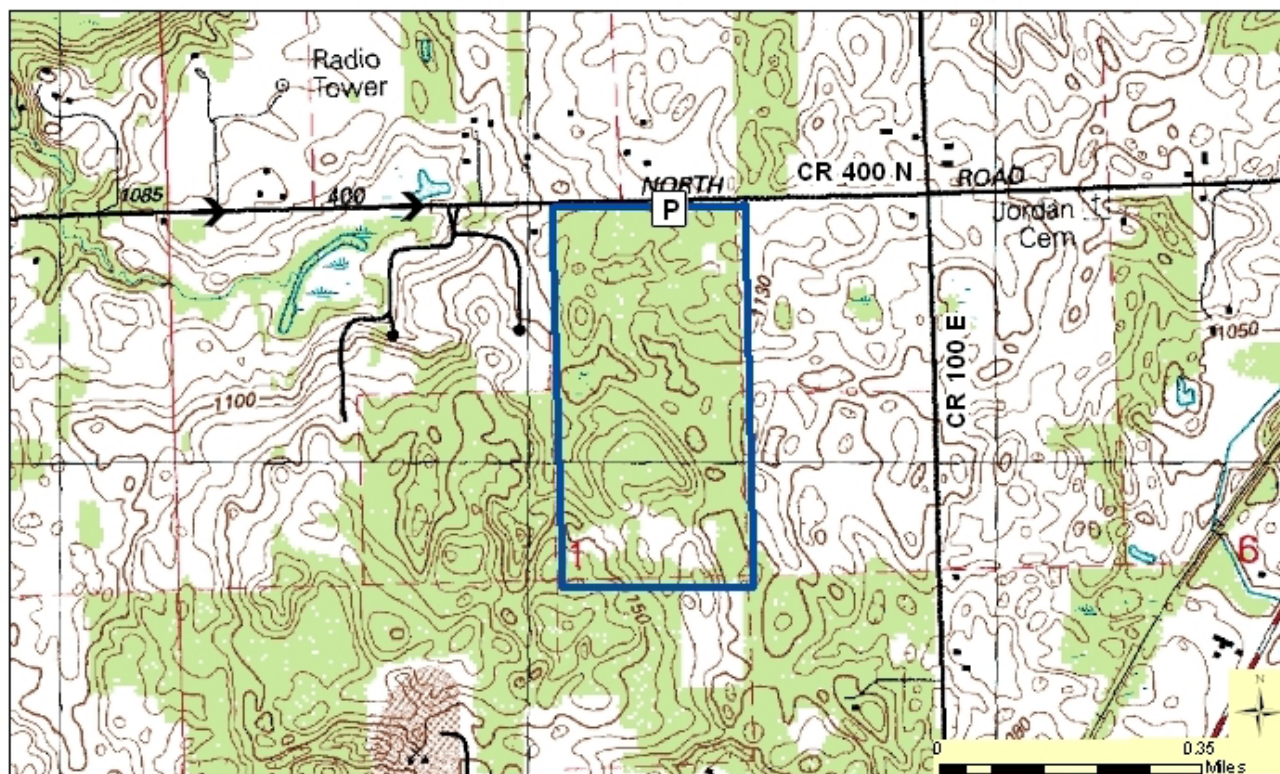
Size: 80 acres

Ownership: Steuben County



### Location and Access

**Parking and trail.** Exit I-69 at the Fremont-Pokagon exit and go south to CR 400N, the first cross-road, and turn left. Go east just over 1 mile to a marked parking lot on the south side of the road. Trails wind through the property.



**Description:** This area is managed as the Charles McClue Reserve by an enthusiastic group of volunteers who serve under the authority of the County Commissioners. Thirty acres of McClue are covered by some of the best old-growth forest in northeast Indiana, including large tulip trees and red and white oaks. Flowering dogwood adds color to the understory in the spring. The woods is rich in spring wildflowers, and a good area for spring birding. Nesting warblers include: Cerulean, Hooded, American Redstart, and Ovenbird. The remainder of the area is younger woods, or field succeeding toward woods. A small pine grove, planted in the mid-1950s, occurs along the east boundary. The entire preserve is very rolling with rounded hills and low, wet depressions. A trail map is available in the registration box at the parking lot. An annual newsletter is produced by the McClue Reserve Board.

### Further Information:

McClue Reserve, c/o Pokagon State Park, 450 Lane 100, Lake James, Angola, IN 46703. (260) 833-2012.  
Division of Nature Preserves Northeast Regional Ecologist, Adam Balzer: [abalzer@dnr.in.gov](mailto:abalzer@dnr.in.gov)