



No. 1084	<b>AUTHOR:</b> Chad M. Stewart, Deer Research Biologist	<b>DATE</b> 7/2/14
	<b>TITLE:</b> 2013 Biological Deer Check Stations	

**Abstract:** During the 2013 deer-hunting season, division personnel examined 2,672 deer to assess sex and age-structure. Yearling deer represented 39% of the adult male harvest, down 2 percentage points from 2012, and 35% of the adult female harvest, similar to 2012. The percentage of 1.5 year old males in the adult male harvest has remained between 39-41% over the past four years, while the female harvest composition has ranged between 32-36% over this same time period.

During the 2013 opening weekend of the deer firearm season, Division personnel aged and sexed 2,672 deer at 53 privately operated check stations and 12 Fish and Wildlife Areas statewide. Yearlings (1.5 years) accounted for 31.8% of aged deer and 2.5 year olds accounted for 31.4% (Table 1). Yearling deer represented 39% of the adult male harvest, a decrease of two percentage points from 2011 (Table 2). Female yearlings comprised 35% of the adult female harvest, which was similar to 2012 (Table 2). The proportion of 2.5 year-olds in the adult male harvest remained at 38%, while the corresponding female statistic increased 2 percentage points over last year. Among adult males in the sample, 23% were estimated to be  $\geq 3.5$  years old, up two percentage points from 2012 and the sixth consecutive year of averaging 20% or greater.

The proportion of 1.5 year old males in the harvest has decreased substantially since 1994 (Figure 1). During this same time frame, the number of yearling females in the harvest has been relatively stable. It is unknown whether this is a result of the implementation of the One Buck Rule in 2002.

The proportion of 1.5 year-old males in the adult male harvest can provide insight into and a measure of the effects of past antlerless harvests on current herd recruitment. This value, as a measure of a change in demographics, can also give indications of large increases in harvest pressure in a given area. Table 3 shows the average age of adult males and females harvested during the opening weekend of firearms season between 1994-2013. The average age of harvested females experiences slight annual changes, but stays relatively stable throughout time.




---

These management notes are issued periodically to provide a quick source of information on wildlife surveys and investigations, and various wildlife programs prior to more terminal reports. Any information provided is subject to further analysis and therefore is not for publication without permission.

Table 1. Number of deer aged by Division personnel during opening weekend of the 2013 firearms season.

	0.5	1.5	2.5	3.5+	Total
Female	205	172	181	141	699
Male	234	681	660	398	1,973
Total	439	853	841	539	2,672

Table 2. Age structure of adult deer examined during opening weekend during the 2001-2013 firearms season. (Percentages may not add to 100 due to rounding)

Sex	% of Adult Harvest in Age Class			
	Year	1.5	2.5	3.5+
Female	2001	40	35	24
	2002	40	35	25
	2003	40	36	23
	2004	37	36	28
	2005	42	33	25
	2006	38	39	23
	2007	38	38	24
	2008	38	35	27
	2009	34	38	28
	2010	32	41	26
	2011	36	38	26
	2012	35	35	30
	2013	35	37	29
Male	2001	56	31	14
	2002	53	33	14
	2003	54	30	16
	2004	50	35	15
	2005	50	35	16
	2006	46	38	16
	2007	44	39	17
	2008	40	40	20
	2009	36	40	24
	2010	40	38	22
	2011	39	38	23
	2012	41	38	21
	2013	39	38	23

Table 3. Average age of adult harvested deer during the first weekend of firearms season (93-13).

---

<u>Year</u>	<u>Adult Male</u>	<u>Adult Female</u>
1993	2.05	2.62
1994	1.98	2.55
1995	1.99	2.59
1996	1.99	2.43
1997	2.09	2.59
1998	2.02	2.60
1999	2.01	2.53
2000	2.01	2.53
2001	2.10	2.48
2002	2.13	2.50
2003	2.14	2.46
2004	2.17	2.57
2005	2.19	2.47
2006	2.23	2.49
2007	2.26	2.53
2008	2.36	2.58
2009	2.44	2.67
2010	2.38	2.64
2011	2.40	2.57
2012	2.37	2.70
2013	2.38	2.66

---

## Percentage of Yearling Deer in the Adult Harvest in Indiana (1994-2013)

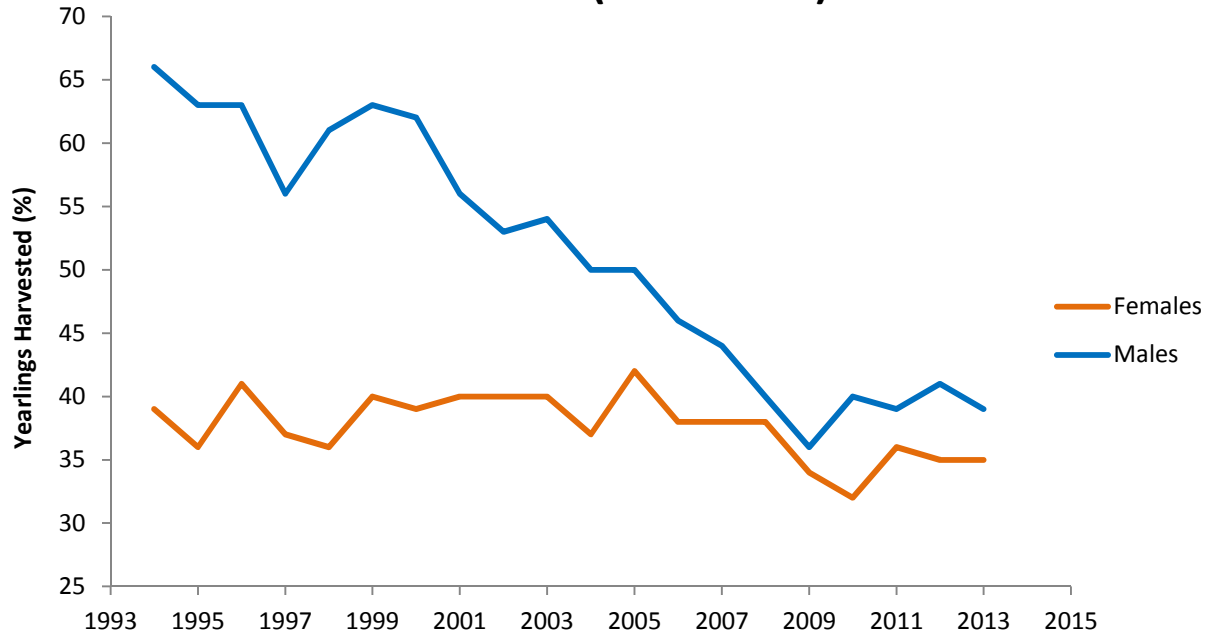


Figure 1. Proportion of yearlings in Indiana's deer harvest (1994-2013) for males and females.