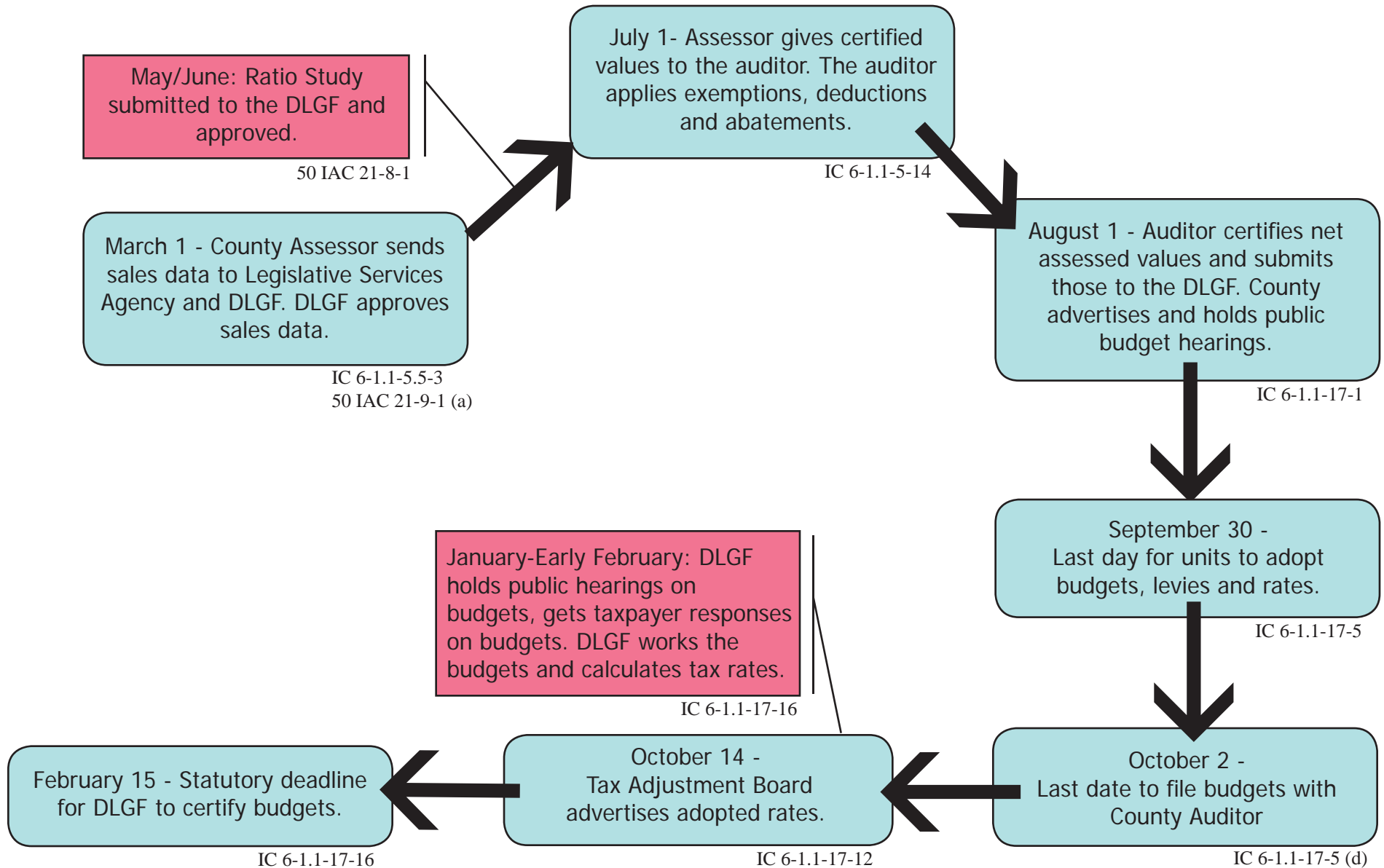
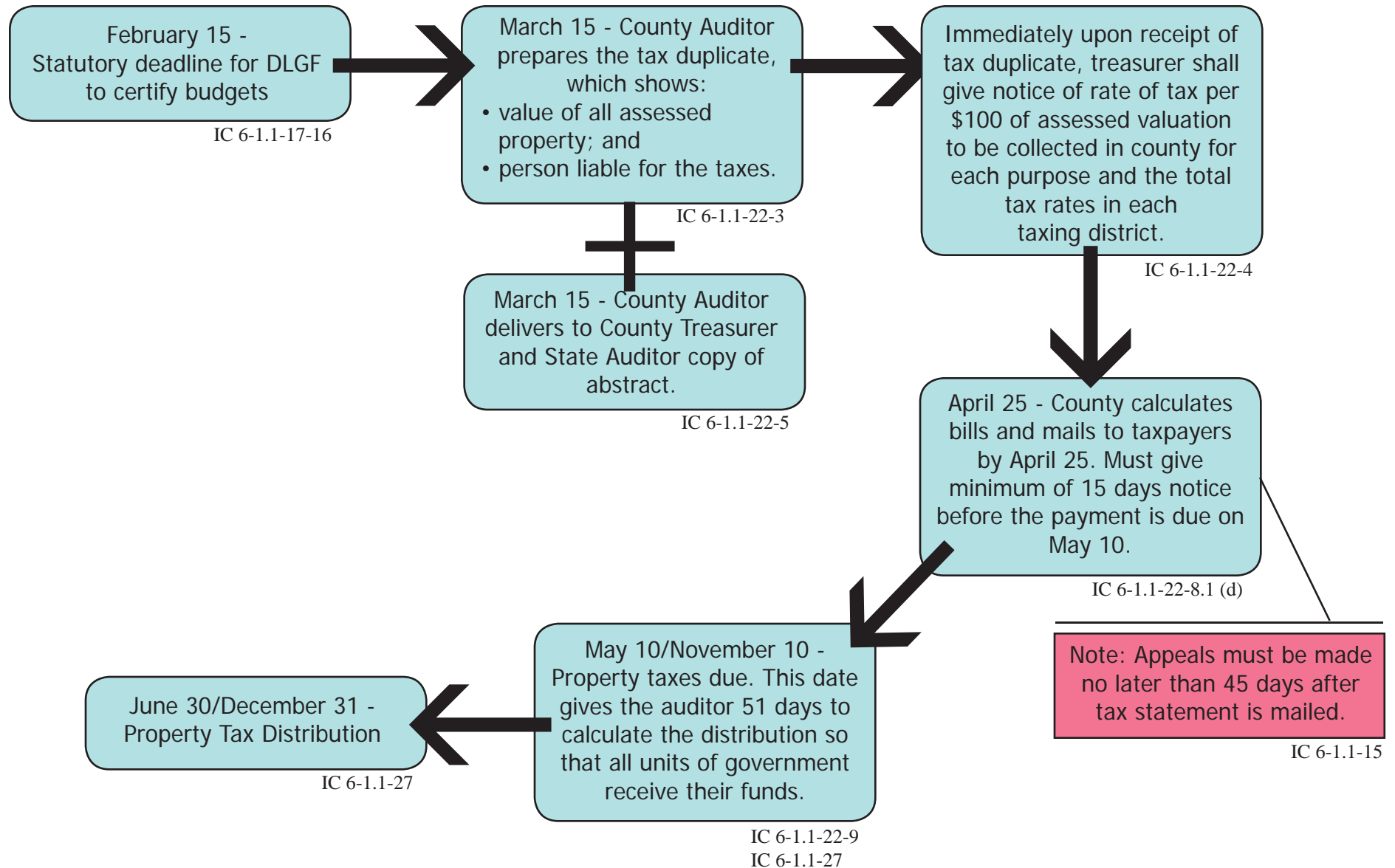


Assessment to Budget Process



Budget to Tax Billing Process



Budget Overview

FOR TAXES 2008 PAYABLE IN 2009

March 1, 2008
(IC 6-1.1-5.5-3)

**Spring/
Summer 2008**

July 1, 2008
(IC 6-1.1-5-14)

Aug. 1, 2008
(IC 6-1.1-17-1)

Feb. 15, 2009
(IC 6-1.1-17-16(h))

County
Assessor
Submits 2007
Sales Data

County
Assessor
Submits Sales
Ratio Study

County
Assessor
Rolls Values
to County
Auditor

County
Auditor
Applies
Deductions,
Exemptions
and
Abatements

County
Auditor
Submits TIF
Neutralization
Worksheet to
DLGF

County
Auditor
Certifies Net
Assessed
Values

**Department
Issues
Budget Order**

County Certification Status Map is available online at: www.dlcf.in.gov