

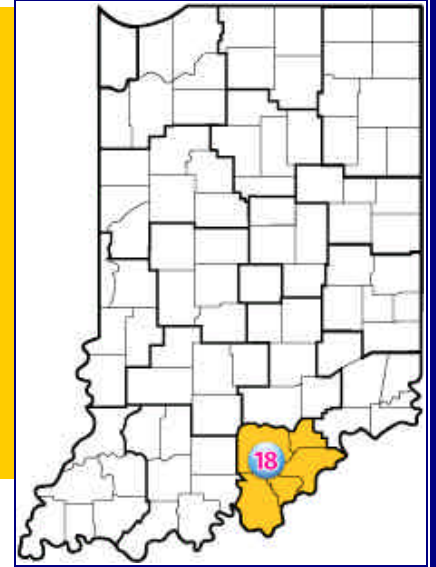


*Protecting our children,
families and future*

Department of Child Services

Practice Indicator Reports

For December 2009



Region 18

December 2009

Data in the report (both historical and current) may be subject to change as it is continually being validated and updated. This may result in statistical data in previous reports to be inconsistent with statistics found in more recent reports even when the data pertain to the same time period.



Published
January 2010



DCS Practice Indicator Report Initial Assessment - Use of Substitute Care

For December 2009

Report Description

This report uses data collected over a rolling three month period ending with the current report month. The graphs and numbers for historical months also use a rolling three month period ending with the historical month listed.

Reports Taken – This section has data regarding the reports taken during the three month period ending with the report month.

Count – This is the total number of reports of abuse or neglect that are entered into ICWIS during the period ending with the report month.

Percent Resulting in Screen Outs – This is the percentage of reports that are screened out divided by the total reports taken during the period ending with the report month.

Assessments Substantiated – This section has data regarding the number of assessments with substantiated findings of abuse and/or neglect during the three month period ending with the report month.

Count – This is the total number of assessments with substantiated findings of abuse and/or neglect during the period ending with the report month.

Percent Resulting in Removal – This is the percentage of substantiated assessments during the period that resulted in removal of the child from the home by the end of the report month divided by the total number of substantiated assessments during the period ending with the report month.



DCS Practice Indicator Report

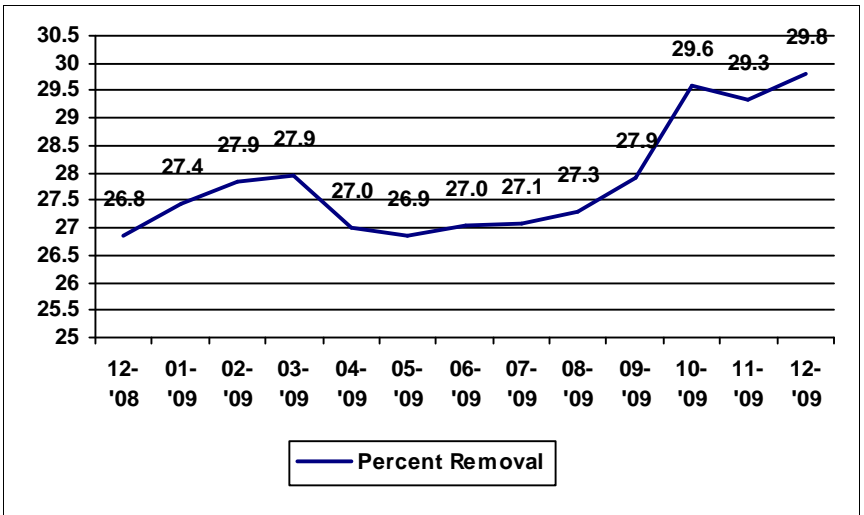
Initial Assessment - Use of Substitute Care

For December 2009

December 2009

Location	Reports Taken For Oct 2009 to Dec 2009		Assessments Substantiated For Oct 2009 to Dec 2009	
	Count	Percent Resulting in Screen Outs	Count	Percent Resulting in Removal
Statewide	25,512	16.2%	7,014	29.8%
Region 18	1,218	8.70%	406	30.54%
Clark	466	12.7%	157	13.4%
Floyd	237	1.7%	47	61.7%
Harrison	132	4.5%	48	33.3%
Scott	258	9.3%	110	30.0%
Washington	125	10.4%	44	56.8%

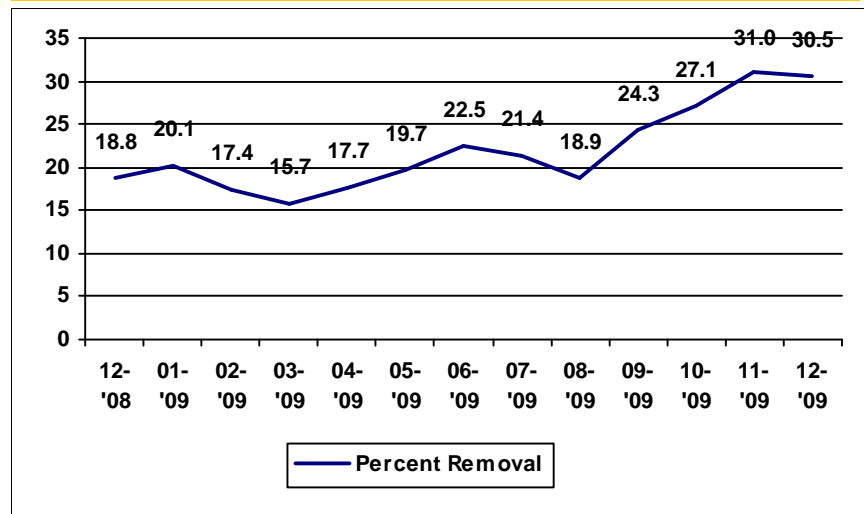
Statewide Percent Removal Trend



Region 18 For December 2008 to December 2009

Month	Reports Taken For Oct 2009 to Dec 2009		Assessments Substantiated For Oct 2009 to Dec 2009	
	Count	Percent Resulting in Screen Outs	Count	Percent Resulting in Removal
Dec 2009	1,218	8.7%	406	30.5%
Nov 2009	1,274	8.4%	419	31.0%
Oct 2009	1,303	6.8%	410	27.1%
Sep 2009	1,262	6.7%	350	24.3%
Aug 2009	1,220	7.8%	339	18.9%
Jul 2009	1,237	10.4%	370	21.4%
Jun 2009	1,391	11.6%	418	22.5%
May 2009	1,462	13.2%	451	19.7%
Apr 2009	1,393	12.0%	429	17.7%
Mar 2009	1,302	12.3%	364	15.7%
Feb 2009	1,231	11.5%	304	17.4%
Jan 2009	1,232	11.3%	308	20.1%
Dec 2008	1,282	11.2%	357	18.8%

Region 18 Percent Removal





DCS Practice Indicator Report CHINS Placements by County

For December 2009

Report Description

This report uses data collected at the end of the current report month. The graphs and numbers for historical months also use data from the end of the historical month listed. This report looks at CHINS children from CHINS cases that were open on the last day of the report month. It also collects where that child is located (in their own home or in substitute care).

Total CHINS Count – This is the number of children that have an open CHINS case on the last day of the report month.

CHINS – This section has data regarding all children that have an open CHINS case on the last day of the month.

In Home – This section has data regarding children that have an open CHINS case on the last day of the month and are in their own home.

Count- This is the number of children that have an open CHINS case on the last day of the month and are in their own home.

Percent- This is the number of children that have an open CHINS case on the last day of the month and are in their own home divided by the total number of children that have an open CHINS case on the last day of the month.

Foster Care – This section has data regarding children that have an open CHINS case on the last day of the month and are in out of home placement.

Count- This is the number of children that have an open CHINS case on the last day of the month and are in out of home placement.

Percent- This is the number of children that have an open CHINS case on the last day of the month and are in out of home placement divided by the total number of children that have an open CHINS case on the last day of the month.

Out of Home Placements – This section has data for children that have an open CHINS case on the last day of the month and are in out of home placement.

Relative Homes – This section has data for children that have an open CHINS case on the last day of the month and are placed with relatives.

Count- This is the number of children that have an open CHINS case on the last day of the month and are placed with relatives.

Percent- This is the number of children that have an open CHINS case on the last day of the month and are placed with relatives divided by the total number of CHINS children in out of home placement at the end of the month.

Foster Homes – This section has data for children that have an open CHINS case on the last day of the month and are placed in foster homes.

Count- This is the number of children that have an open CHINS case on the last day of the month and are placed in foster homes.

Percent- This is the number of children that have an open CHINS case on the last day of the month and are placed in foster homes divided by the total number of CHINS children in out of home placement at the end of the month.

Residential – This section has data for children that have an open CHINS case on the last day of the month and are placed in residential setting.

Count- This is the number of children that have an open CHINS case on the last day of the month and are placed in residential setting.

Percent- This is the number of children that have an open CHINS case on the last day of the month and are placed in residential setting divided by the total number of CHINS children in out of home placement at the end of the month.

Other – This section has data for children that have an open CHINS case on the last day of the month and are in other placement settings. Example would be a court ordered unlicensed placement.

Count- This is the number of children that have an open CHINS case on the last day of the month and are in other placement settings.

Percent- This is the number of children that have an open CHINS case on the last day of the month and are in other placement settings divided by the total number of CHINS children in out of home placement at the end of the month.



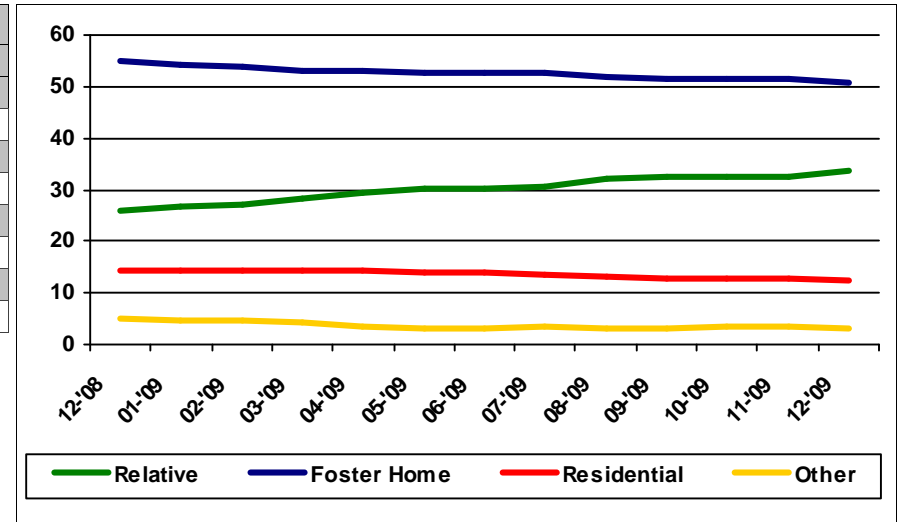
DCS Practice Indicator Report CHINS Placements by County

For December 2009

December 2009

Location	Total CHINS Count	CHINS				Out of Home Placements							
		In Home		Foster Care		Relative Home		Foster Homes		Residential		Other	
		Count	%	Count	%	Count	%	Count	%	Count	%	Count	%
Statewide	15050	4412	29.3%	10,638	70.7%	3587	33.7%	5414	50.9%	1316	12.4%	321	3.0%
Region 18	663	293	44.2%	370	55.8%	130	35.1%	185	50.0%	50	13.5%	5	1.4%
Clark	287	131	45.6%	156	54.4%	56	35.9%	77	49.4%	20	12.8%	3	1.9%
Floyd	84	31	36.9%	53	63.1%	8	15.1%	33	62.3%	11	20.8%	1	1.9%
Harrison	74	43	58.1%	31	41.9%	10	32.3%	11	35.5%	9	29.0%	1	3.2%
Scott	162	68	42.0%	94	58.0%	47	50.0%	40	42.6%	7	7.4%	0	0.0%
Washington	56	20	35.7%	36	64.3%	9	25.0%	24	66.7%	3	8.3%	0	0.0%

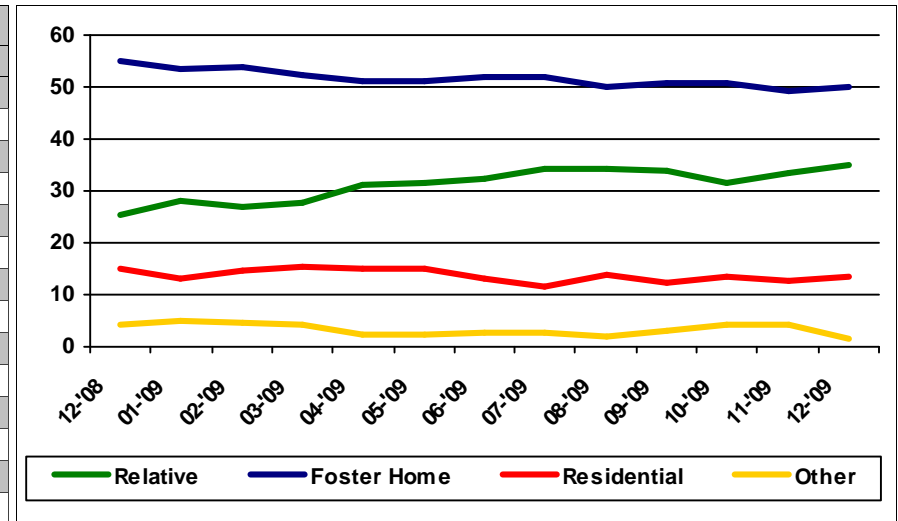
Statewide Foster Care Placement Breakdown



Region 18 For December 2008 to December 2009

Month	Total CHINS Count	CHINS				Out of Home Placements							
		In Home		Foster Care		Relative Home		Foster Homes		Residential		Other	
		Count	%	Count	%	Count	%	Count	%	Count	%	Count	%
Dec 2009	663	293	44.2%	370	55.8%	130	35.1%	185	50.0%	50	13.5%	5	1.4%
Nov 2009	638	251	39.3%	387	60.7%	130	33.6%	191	49.4%	49	12.7%	17	4.4%
Oct 2009	634	251	39.6%	383	60.4%	121	31.6%	194	50.7%	52	13.6%	16	4.2%
Sep 2009	612	241	39.4%	371	60.6%	126	34.0%	188	50.7%	46	12.4%	11	3.0%
Aug 2009	596	248	41.6%	348	58.4%	119	34.2%	174	50.0%	48	13.8%	7	2.0%
Jul 2009	568	228	40.1%	340	59.9%	116	34.1%	176	51.8%	39	11.5%	9	2.6%
Jun 2009	565	213	37.7%	352	62.3%	114	32.4%	183	52.0%	46	13.1%	9	2.6%
May 2009	559	201	36.0%	358	64.0%	113	31.6%	183	51.1%	54	15.1%	8	2.2%
Apr 2009	546	201	36.8%	345	63.2%	108	31.3%	177	51.3%	52	15.1%	8	2.3%
Mar 2009	529	201	38.0%	328	62.0%	91	27.7%	172	52.4%	51	15.5%	14	4.3%
Feb 2009	526	204	38.8%	322	61.2%	87	27.0%	173	53.7%	47	14.6%	15	4.7%
Jan 2009	557	228	40.9%	329	59.1%	93	28.3%	176	53.5%	43	13.1%	17	5.2%
Dec 2008	563	222	39.4%	341	60.6%	87	25.5%	188	55.1%	51	15.0%	15	4.4%

Region 18 Foster Care Placement Breakdown





DCS Practice Indicator Report Use of Foster Care by County

December 2009

Report Description

This report uses data collected at the end of the current report month. The graphs and numbers for historical months also use data from the end of the historical month listed. This report looks at CHINS children from CHINS cases that were open on the last day of the report month. It also collects where that child is located (in their own home or in substitute care).

Total CHINS Count – This is the number of children that have an open CHINS case on the last day of the report month.

In Home or Relative Care – This section has data regarding children that have an open CHINS case on the last day of the month and are in their own home or in relative care.

Count- This is the number of children that have an open CHINS case on the last day of the month and are in their own home or in relative care.

Percent- This is the number of children that have an open CHINS case on the last day of the month and are in their own home or in relative care divided by the total number of children that have an open CHINS case on the last day of the month.

Target (At or Above) % – The target for the percent of the number of children that have an open CHINS case on the last day of the month and are in their own home or in relative care to the total number of children that have an open CHINS case on the last day of the month is 50% or higher.

Non Relative Foster Care – This section has data for children that have an open CHINS case on the last day of the month and are not in their own home or in relative care.

Count- This is the number of children that have an open CHINS case on the last day of the month and are not in their own home or in relative care.

Percent- This is the number of children that have an open CHINS case on the last day of the month and are not in their own home or in relative care divided by the total number of CHINS children in out of home placement at the end of the month.

Target (At or below) % – The target for the percent of the number of children that have an open CHINS case on the last day of the month and are not in their own home or in relative care to the total number of children that have an open CHINS case on the last day of the month is 50% or higher.



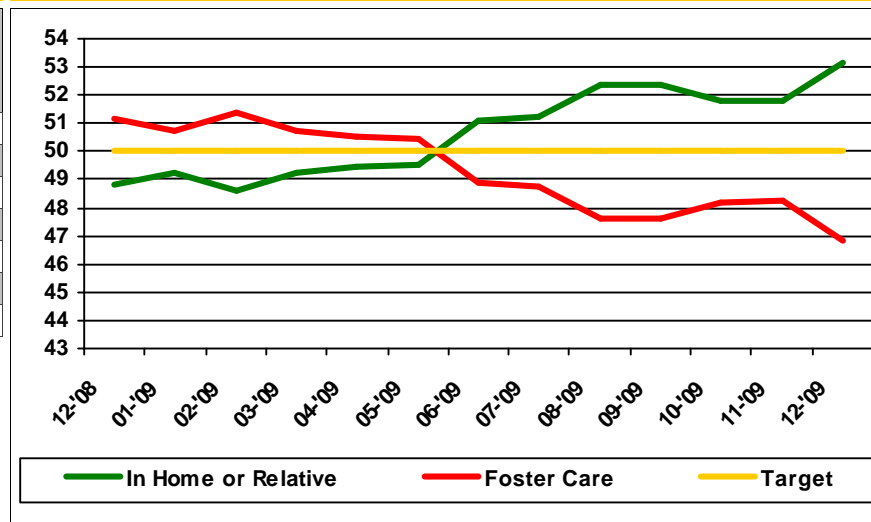
DCS Practice Indicator Report Use of Foster Care by County

For December 2009

December 2009

Location	Total CHINS	In Home or Relative Care		Target (At or Above) %	Non-Relative Foster Care		Target (At or Below) %
	Count	Count	%		Count	%	
Statewide	15050	7999	53.1%	50.0%	7,051	46.9%	50.0%
Region 18	663	423	63.8%	50.0%	240	36.2%	50.0%
Clark	287	187	65.2%	50.0%	100	34.8%	50.0%
Floyd	84	39	46.4%	50.0%	45	53.6%	50.0%
Harrison	74	53	71.6%	50.0%	21	28.4%	50.0%
Scott	162	115	71.0%	50.0%	47	29.0%	50.0%
Washington	56	29	51.8%	50.0%	27	48.2%	50.0%

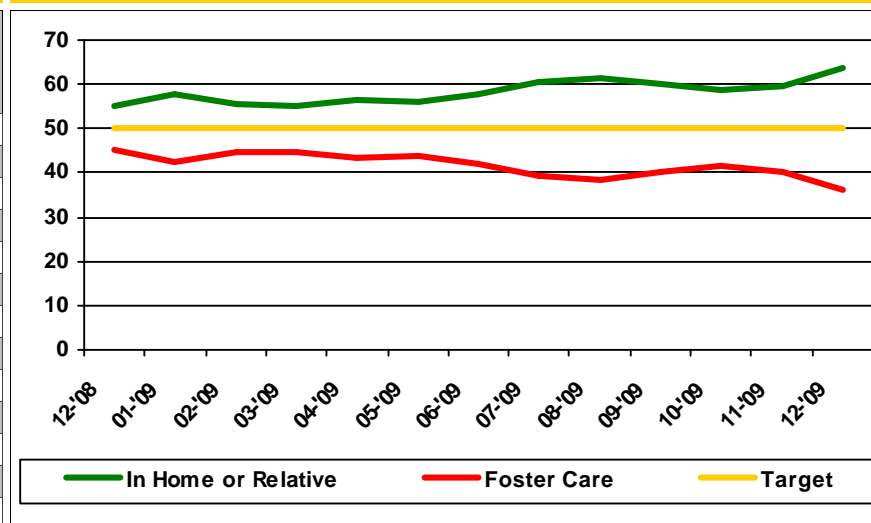
Statewide Foster Care Placement Breakdown



Region 18 For December 2008 to December 2009

Month	Total CHINS	In Home or Relative Care		Target (At or Above) %	Non-Relative Foster Care		Target (At or Below) %
	Count	Count	%		Count	%	
December 2009	663	423	63.8%	50.0%	240	36.2%	50.0%
November 2009	638	381	59.7%	50.0%	257	40.3%	50.0%
October 2009	634	372	58.7%	50.0%	262	41.3%	50.0%
September 2009	612	367	60.0%	50.0%	245	40.0%	50.0%
August 2009	596	367	61.6%	50.0%	229	38.4%	50.0%
July 2009	568	344	60.6%	50.0%	224	39.4%	50.0%
June 2009	565	327	57.9%	50.0%	238	42.1%	50.0%
May 2009	559	314	56.2%	50.0%	245	43.8%	50.0%
April 2009	546	309	56.6%	50.0%	237	43.4%	50.0%
March 2009	529	292	55.2%	50.0%	237	44.8%	50.0%
February 2009	526	291	55.3%	50.0%	235	44.7%	50.0%
January 2009	557	321	57.6%	50.0%	236	42.4%	50.0%
December 2008	563	309	54.9%	50.0%	254	45.1%	50.0%

Region 18 Foster Care Placement Breakdown





DCS Practice Indicator Report Locally Placed CHINS

For December 2009

Report Description

This report uses data collected over at the end of the current report month. The graphs and numbers for historical months also use data from the historical month listed.

Total Out of Home Placements – This is the total number of CHINS children that are in out of home placement on the last day of the report month.

Placed in Same County – This is the total number of CHINS children that are placed in the same county as the county of their case.

Percent Locally Placed – This is the percentage of CHINS children that are placed in the same county as the county of their case divided by the total number of CHINS children which are in out of home placement on the last day of the report month.



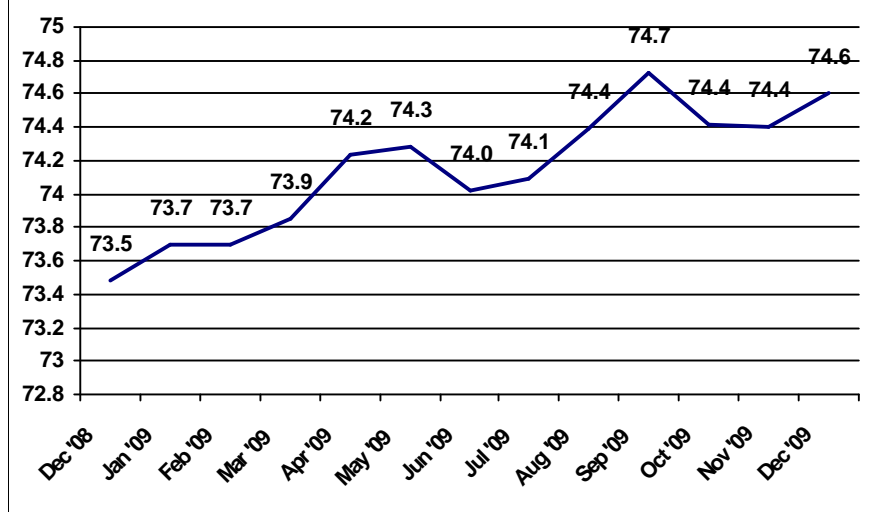
DCS Practice Indicator Report Locally Placed CHINS

For December 2009

December 2009

Location	Total Out of Home Placements	Placed in Same County	Percent Locally Placed
Statewide	10,638	7,936	74.6%
Region 18	370	263	71.1%
Clark	156	118	75.6%
Floyd	53	38	71.7%
Harrison	31	15	48.4%
Scott	94	69	73.4%
Washington	36	23	63.9%

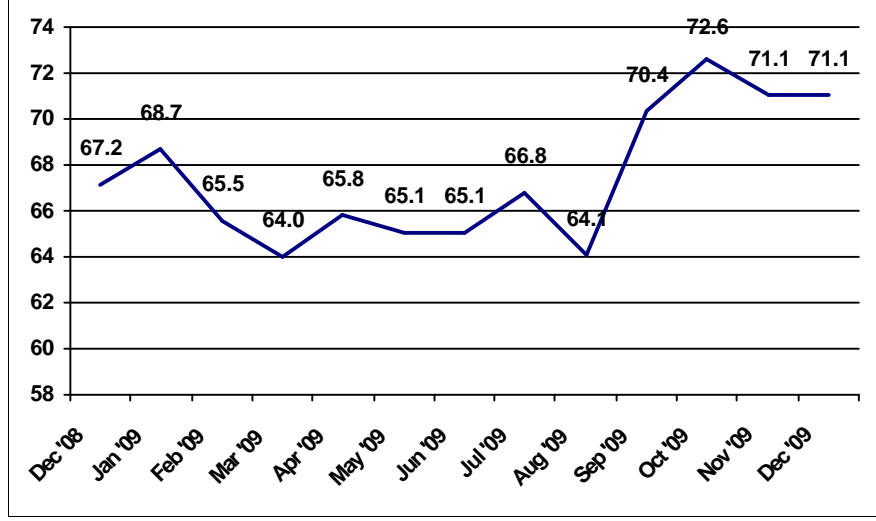
Statewide Percent Placed Locally



Region 18 For December 2008 to December 2009

Month	Total Out of Home Placements	Placed in Same County	Percent Locally Placed
Dec 2009	370	263	71.1%
Nov 2009	387	275	71.1%
Oct 2009	383	278	72.6%
Sep 2009	371	261	70.4%
Aug 2009	348	223	64.1%
Jul 2009	340	227	66.8%
Jun 2009	352	229	65.1%
May 2009	358	233	65.1%
Apr 2009	345	227	65.8%
Mar 2009	328	210	64.0%
Feb 2009	322	211	65.5%
Jan 2009	329	226	68.7%
Dec 2008	341	229	67.2%

Region 18 Percent Placed Locally





DCS Practice Indicator Report Average Number of Placements

For December 2009

Report Description

This report uses data collected at the end of the current report month. The graphs and numbers for historical months also use data from the historical month listed.

Average Number of Placements Per Child – This is the total number of out of home placements for each CHINS child in out of home placement on the last day of the report month. This includes all placements during the current removal episode. If a child had at least one placement end in the first 8 days from removal, then that child's number of placements was reduced by one.

This number is divided by the total number CHINS children who are in out of home placement on the last day of the report month.



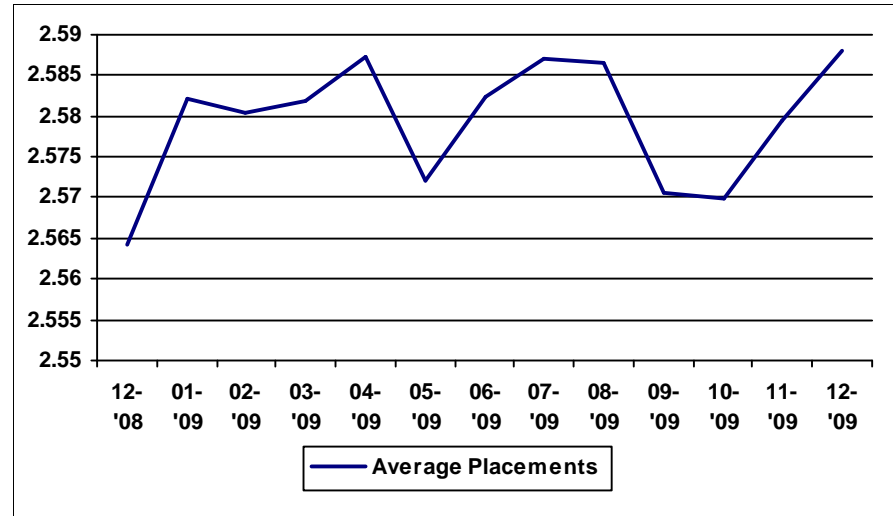
DCS Practice Indicator Report Average Number of Placements

For December 2008 to December 2009

December 2009

Location	Average Number of Placements Per Child
Statewide	2.6
Region 18	2.6
Clark	3.1
Floyd	2.1
Harrison	2.8
Scott	2.2
Washington	1.7

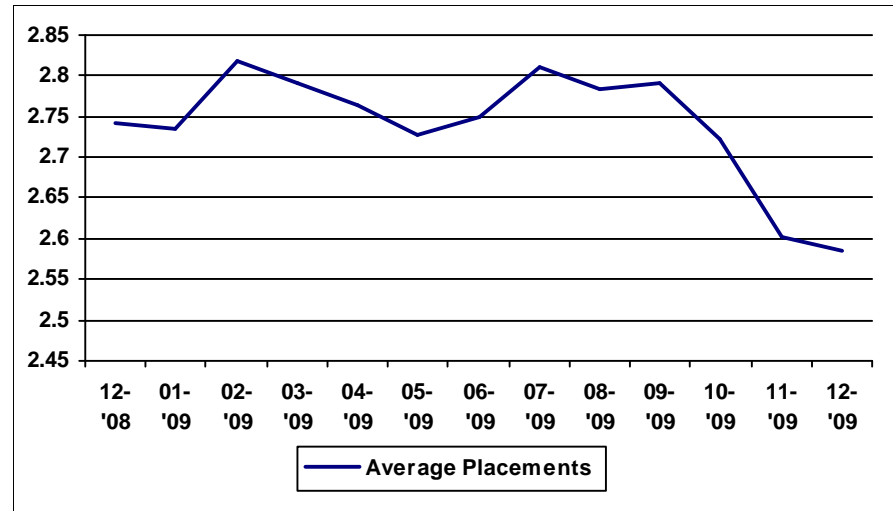
Statewide Average Number of Placements



Region 18 For December 2008 to December 2009

Month	Average Number of Placements Per Child
December 2009	2.6
November 2009	2.6
October 2009	2.7
September 2009	2.8
August 2009	2.8
July 2009	2.8
June 2009	2.8
May 2009	2.7
April 2009	2.8
March 2009	2.8
February 2009	2.8
January 2009	2.7
December 2008	2.7

Region 18 Average Number of Placements





DCS Practice Indicator Report Sibling Placement Report

For December 2009

Report Description

This report uses data collected at the end of the current report month. The graphs and numbers for historical months also use data from the end of the historical month listed.

Count of Sibling Cases – This is the number of open cases as of the end of the report month which have more than one child in out of home placement at the end of the report month.

Cases With All Children Placed Together – This is the number of cases with more than one child in out of home placement where all of the children are placed in the same resource with the same resource ID.

Percent Placed Together of Sibling Cases– This is the percentage of the number of cases where all of the children in out of home placement are placed together divided by the number of open cases with more than one child in out of home placement as of the end of the report month.

Average Number of Children per Case – This number takes the number of children in out of home placement from cases with more than one child in out of home placement and divides it by the number of cases with more than one child in out of home placement as of the end of the report month.



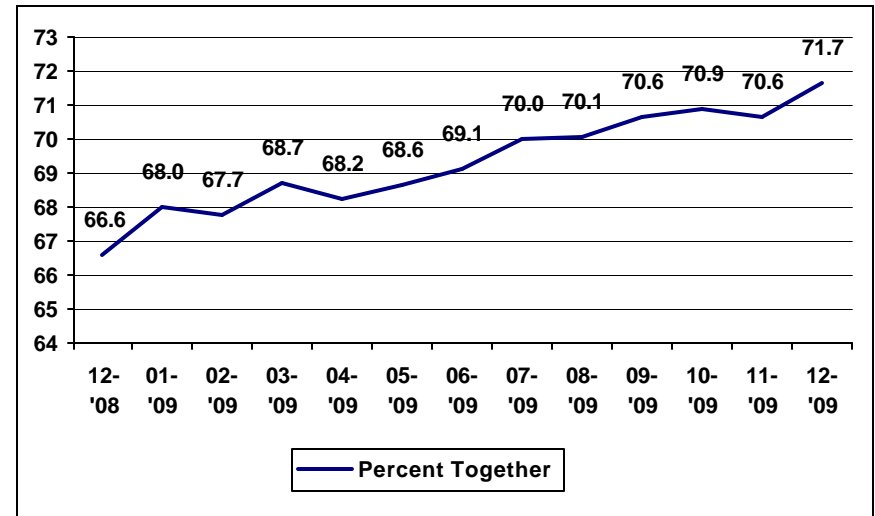
DCS Practice Indicator Report Sibling Placement Report

December 2009

December 2009

Location	Count of Sibling Cases	Cases With All Children Placed Together	Percent Placed Together of Sibling Cases	Average Number of Children per Case
Statewide	2689	1927	71.7%	2.67
Region 18	80	64	80.0%	2.70
Clark	33	27	81.8%	2.64
Floyd	10	10	100.0%	2.80
Harrison	4	4	100.0%	2.25
Scott	24	15	62.5%	2.71
Washington	9	8	88.9%	3.00

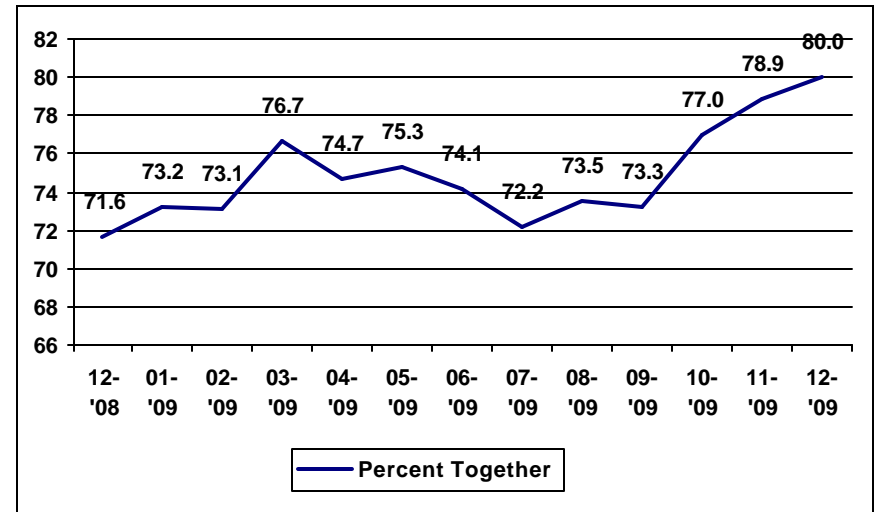
Statewide Percent Together



Region 18 For December 2008 to December 2009

Month	Count of Sibling Cases	Cases With All Children Placed Together	Percent Placed Together of Sibling Cases	Average Number of Children per Case
December 2009	80	64	80.0%	2.70
November 2009	90	71	78.9%	2.64
October 2009	87	67	77.0%	2.63
September 2009	86	63	73.3%	2.63
August 2009	83	61	73.5%	2.52
July 2009	79	57	72.2%	2.53
June 2009	85	63	74.1%	2.55
May 2009	85	64	75.3%	2.54
April 2009	79	59	74.7%	2.54
March 2009	73	56	76.7%	2.52
February 2009	67	49	73.1%	2.69
January 2009	71	52	73.2%	2.66
December 2008	74	53	71.6%	2.66

Region 18 Percent Together





DCS Practice Indicator Report

Length of Stay in Out of Home Placement

Children in Out of Home Placement by Length of Time Since Latest Removal

For December 2009

Report Description

This report uses data collected at the end of the current report month. The graphs and numbers for historical months also use data from the end of the historical month listed. This report looks at CHINS children that were in out of home placement at the end of the month. It measures the number of days since the child was last removed from its home.

One Year - 0 to 365 Days— This is column shows data for CHINS children that have been in out of home placement between 0 and 365 days since the child's removal.

Count- This is the number of CHINS children that have been in out of home placement between 0 and 365 days since the child's last removal.

Percent- This is the number of CHINS children that have been in out of home placement between 0 and 365 days since the child's last removal divided by the total number of CHINS children in out of home placement at the end of the month.

One Year - 366 to 730 Days— This is column shows data for CHINS children that have been in out of home placement between 366 and 730 days since the child's last removal.

Count- This is the number of CHINS children that have been in out of home placement between 366 and 730 days since the child's last removal.

Percent- This is the number of CHINS children that have been in out of home placement between 366 and 730 days since the child's last removal divided by the total number of CHINS children in out of home placement at the end of the month.

One Year - 731 to 1095 Days— This is column shows data for CHINS children that have been in out of home placement between 731 to 1095 days since the child's last removal.

Count- This is the number of CHINS children that have been in out of home placement between 731 to 1095 days since the child's last removal.

Percent- This is the number of CHINS children that have been in out of home placement between 731 to 1095 days since the child's last removal divided by the total number of CHINS children in out of home placement at the end of the month.

One Year - 1096 Days+— This is column shows data for CHINS children that have been in out of home placement 1096 days or more since the child's last removal.

Count- This is the number of CHINS children that have been in out of home placement 1096 days or more since the child's last removal.

Percent- This is the number of CHINS children that have been in out of home placement 1096 days or more since the child's last removal divided by the total number of CHINS children in out of home placement at the end of the month.

Length Per Child – This column shows data for length of time of CHINS children who were in out of home placement at the end of the report month have been in out of home placement since the child's last removal from their home.

Average- This column calculates the average or "mean" length of time in out of home placement since the last removal per child in out of home placement at the end of the report month.

Median- This column calculates the median length of time in out of home placement since the last removal per child in out of home placement at the end of the report month.



DCS Practice Indicator Report

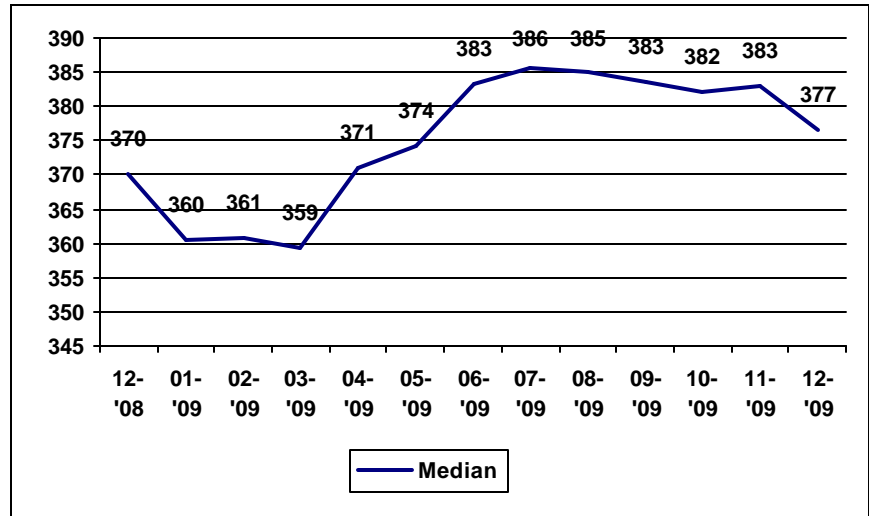
Length of Stay in Out of Home Placement

Children in Out of Home Placement by Length of Time Since Latest Removal
For December 2009

December 2009

Location	One Year 0 to 365 Days		Two Years 366 to 730 Days		Three Years 731 to 1095 Days		Three + Years 1096 Days+		Length Per Child	
	Count	Percent	Count	Percent	Count	Percent	Count	Percent	Average	Median
Statewide	5,256	49.4%	2,532	23.8%	1,163	10.9%	1,686	15.9%	609.3	376.5
Region 18	213	57.7%	78	21.1%	30	8.1%	48	13.0%	516.8	276.4
Clark	85	54.5%	28	17.9%	12	7.7%	31	19.9%	669.3	300.0
Floyd	35	67.3%	8	15.4%	4	7.7%	5	9.6%	403.2	209.0
Harrison	14	45.2%	12	38.7%	1	3.2%	4	12.9%	578.1	453.4
Scott	57	60.6%	27	28.7%	3	3.2%	7	7.4%	354.5	251.0
Washington	22	61.1%	3	8.3%	10	27.8%	1	2.8%	390.4	100.0

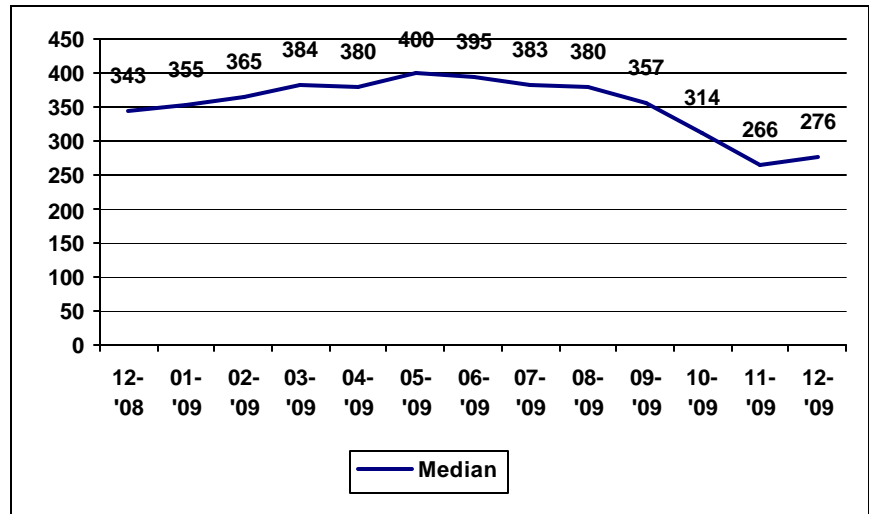
Statewide Median Length



Region 18 For December 2008 to December 2009

Month	One Year 0 to 365 Days		Two Years 366 to 730 Days		Three Years 731 to 1095 Days		Three + Years 1096 Days+		Length Per Child	
	Count	Percent	Count	Percent	Count	Percent	Count	Percent	Average	Median
December 2009	213	57.7%	78	21.1%	30	8.1%	48	13.0%	516.8	276.4
November 2009	221	57.3%	80	20.7%	35	9.1%	50	13.0%	510.2	266.0
October 2009	199	52.1%	89	23.3%	44	11.5%	50	13.1%	549.4	314.0
September 2009	191	51.6%	81	21.9%	45	12.2%	53	14.3%	581.3	357.0
August 2009	170	48.9%	79	22.7%	46	13.2%	53	15.2%	606.2	379.5
July 2009	167	49.1%	83	24.4%	35	10.3%	55	16.2%	613.9	382.5
June 2009	169	48.0%	86	24.4%	46	13.1%	51	14.5%	586.6	395.0
May 2009	165	46.1%	85	23.7%	50	14.0%	58	16.2%	613.3	399.5
April 2009	165	47.8%	76	22.0%	47	13.6%	57	16.5%	616.8	380.4
March 2009	156	47.6%	71	21.6%	49	14.9%	52	15.9%	624.4	384.0
February 2009	161	50.0%	65	20.2%	47	14.6%	49	15.2%	624.3	365.0
January 2009	171	52.0%	71	21.6%	36	10.9%	51	15.5%	612.8	354.6
December 2008	173	50.7%	73	21.4%	41	12.0%	54	15.8%	617.4	343.4

Region 18 Median Length





DCS Practice Indicator Report CHINS and IA Permanency Report

For December 2009

Report Description

This report uses CHINS and IA case types that have case type status end date occurring during the month. It then groups these cases using the closure reason codes into categories of closure reasons. Case with closure reason code “Case opened in error – disregard” are filtered out for the purpose of this report.

Closure Reasons are group by:

Description	Category	Description	Category
Child Reunited with Parents	Reunification	Case closed; AG case created	Guardianship
Child never Removed from own home, wardship terminated	Reunification	Child placed with relatives	Relative
Extended wardship terminated (on court order for age 18 to 21)	Emancipation	Child Placed with Legal guardian	Guardianship
Child Returned to Primary Home	Reunification	Child Reached Age of Majority (age 18)	Emancipation
Period of IA ended code used for Informal Adjustment cases only	Reunification	Emancipated Court Ordered (age 18)	Emancipation
Child Adoption Finalized	Adoption	Child Already Reunited with parent (s) when wardship terminated	Reunification

The Permanency column “Total” refers to the total case with reason codes in the Reunification, Adoption, Relative, Guardianship, and Emancipation categories.

The Permanency column “Total within 24 months” refers to the total case that ended within 24 month of the case status type begin date in the Reunification, Adoption, Relative, Guardianship, and Emancipation categories.



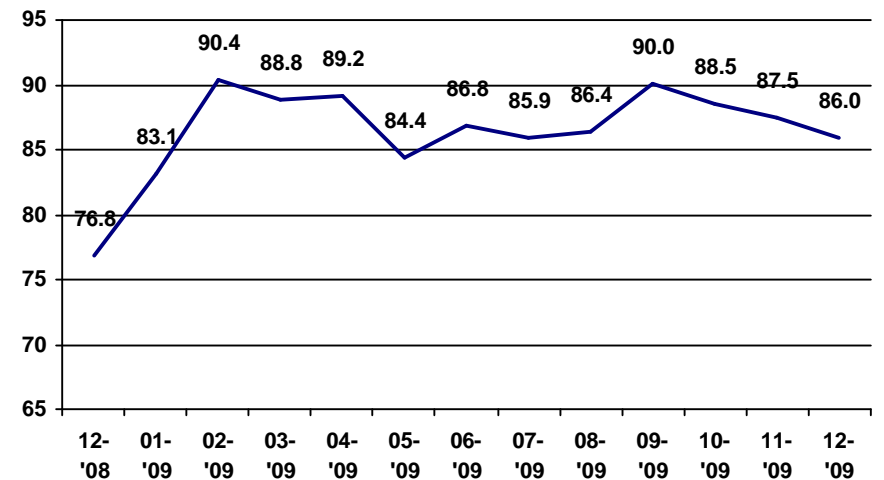
DCS Practice Indicator Report CHINS and IA Permanency Report

For December 2009

December 2009

Location	Closed Cases Types with Permanency Outcomes					Permanency		
	Reunification	Adoption	Relative	Guardianship	Emanicipation	Total	Within 24 Months	24 Month Rate
Statewide	726	96	33	74	25	954	820	86.0
Region 18	25	1	1	9	0	36	33	91.7
Clark	10	1	1	3	0	15	12	80.0
Floyd	4	0	0	0	0	4	4	100.0
Harrison	4	0	0	2	0	6	6	100.0
Scott	1	0	0	4	0	5	5	100.0
Washington	6	0	0	0	0	6	6	100.0

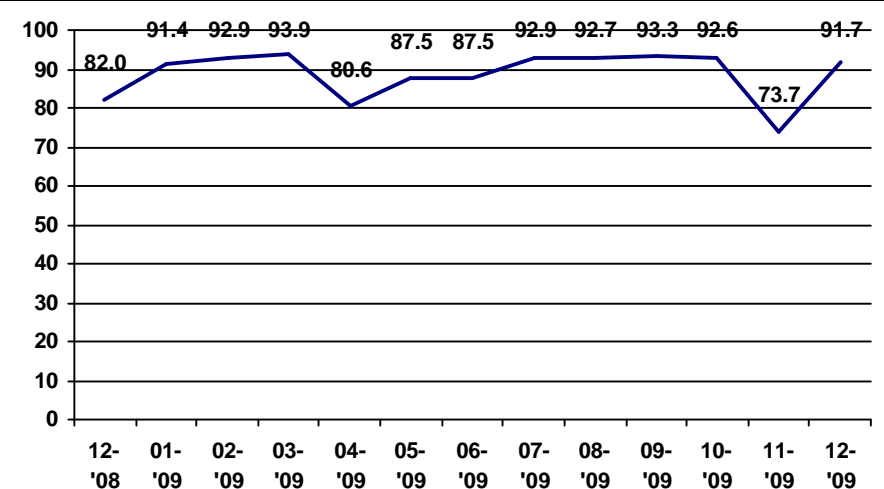
Statewide Permanency within 24 Months



Region 18 For December 2008 to December 2009

Location	Closed Cases Types with Permanency Outcomes					Permanency		
	Reunification	Adoption	Relative	Guardianship	Emanicipation	Total	Within 24 Months	24 Month Rate
Dec 2009	25	1	1	9	0	36	33	91.7
Nov 2009	22	11	0	3	2	38	28	73.7
Oct 2009	70	5	2	4	0	81	75	92.6
Sep 2009	38	0	2	4	1	45	42	93.3
Aug 2009	34	1	0	2	4	41	38	92.7
Jul 2009	34	1	0	3	4	42	39	92.9
Jun 2009	25	0	1	3	3	32	28	87.5
May 2009	19	0	0	3	2	24	21	87.5
Apr 2009	30	2	0	2	2	36	29	80.6
Mar 2009	28	0	1	4	0	33	31	93.9
Feb 2009	50	1	0	3	2	56	52	92.9
Jan 2009	45	4	0	7	2	58	53	91.4
Dec 2008	36	6	0	6	2	50	41	82.0

Region 18 Permanency within 24 Months





DCS Practice Indicator Report Visitations and Contacts Report

For December 2009

Report Description

This report uses data collected over at the end of the current report month. The graphs and numbers for historical months also use data from the historical month listed. For the purpose of this report, a person is considered family for the child if they have the following relationships:

- Father
- Mother
- Stepfather
- Stepmother
- Grandfather
- Grandmother
- Pre-adoptive father
- Pre-adoptive mother
- Adoptive grandparent
- Legal Guardian

FCM Contacts With the Child's Family Occurring During the Month – This section of the report deals with data involving FCM contacts with the family of the child that occurred during the report month. The child may or may not be present at the contact.

Children – This is the total number of children that the FCM had at least one contact with a member of the child's family during the month.

Average Per Child – This is the average number of contacts that FCM had contact with a member of the child's family for those children who had at least one contact during the month.

Child Visitations with Family Occurring During the Month – This section of the report deals with data involving child visitations with the family of the child that occurred during the report month.

Children – This is the total number of children that had at least one visitation with a member of the child's family during the month.

Average Per Child – This is the average number of visitations that the child had with a member of the child's family for those children who had at least one visitation during the month.



DCS Practice Indicator Report Visitations and Contacts Report

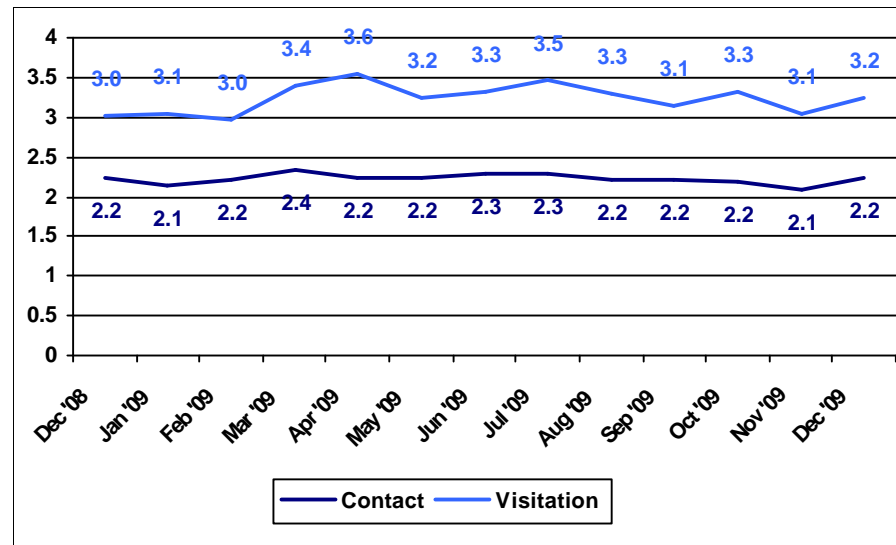
Average Visitations and Contacts per Child During the Report Month by County For December 2009

December 2009

Family used in this report refers to original caretakers.

Location	FCM Contacts With the Child's Family Occurring During the Month		Child Visitations with Family Occurring During the Month	
	Children	Average Per Child	Children	Average Per Child
Statewide	10,927	2.2	1,538	3.2
Region 18	562	2.3	76	3.5
Clark	246	1.8	27	3.7
Floyd	56	1.5	18	3.6
Harrison	68	2.8	4	2.3
Scott	137	2.6	16	2.5
Washington	55	3.6	11	4.6

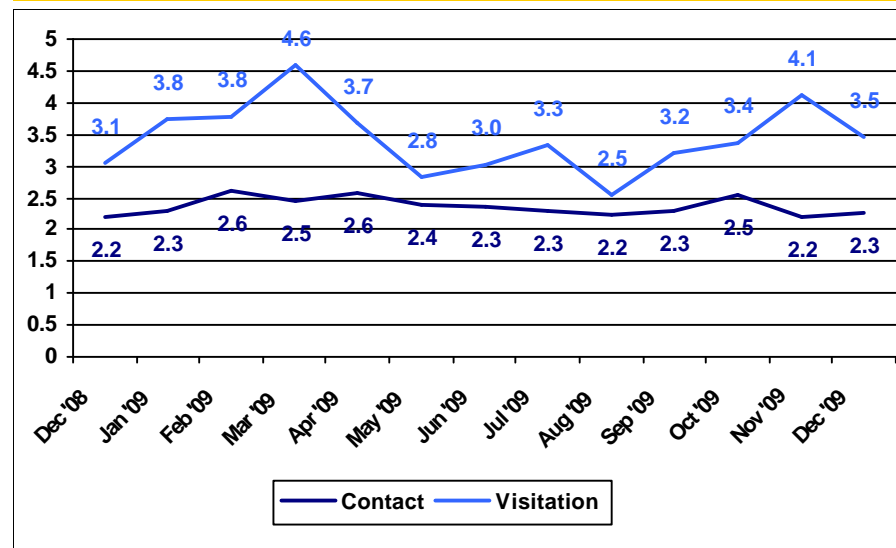
Statewide Average Visitations and Contacts



Region 18 For December 2008 to December 2009

Month	FCM Contacts With the Child's Family Occurring During the Month		Child Visitations with Family Occurring During the Month	
	Children	Average Per Child	Children	Average Per Child
December 2009	562	2.3	76	3.5
November 2009	603	2.2	94	4.1
October 2009	606	2.5	92	3.4
September 2009	635	2.3	79	3.2
August 2009	592	2.2	75	2.5
July 2009	623	2.3	80	3.3
June 2009	639	2.3	83	3.0
May 2009	590	2.4	75	2.8
April 2009	619	2.6	66	3.7
March 2009	583	2.5	69	4.6
February 2009	534	2.6	79	3.8
January 2009	532	2.3	85	3.8
December 2008	559	2.2	77	3.1

Region 18 Average Visitations and Contacts





DCS Practice Indicator Report Absence of Repeat Maltreatment

For December 2009

Report Description

This is a description of the key elements used in this report.

Time Period – The time period used in this report is the 12 months prior to the month of the report.

Assessments during time period – The assessment used in this report are assessment with BOTH report date AND approval date during the time period (12 months prior to the month of the report).

Victim Selection – The children used in this report were identified as having at least one substantiated allegation of abuse or neglect on an assessment during the time period.

First Occurrence – This looks at the victims of substantiated abuse or neglect during the first 6 months of the time period (6 to 12 months prior to the month of the report). If a child was a victim in multiple assessments with substantiated abuse or neglect, the assessment with the earliest report date is considered the first occurrence.

Recurrence Time Period – The time period used to see if a child is a substantiated victim in a recurring assessment of abuse or neglect is based off the report date of the first occurrence. The recurrence period begins one day after the first occurrence report date and ends 183 after the first occurrence report date ($\geq 1^{\text{st}}$ Occurrence +1 and $\leq 1^{\text{st}}$ Occurrence +183). If a child has multiple recurrences, the earliest report date in the recurring time period is considered the recurring assessment.

Here is a visual representation of an example. This is a report for December of a given year. The time period to review assessments would run from Jan 1st to Dec 31st. The time period for a first occurrence would be Jan 1st to Jun 30th. If a child had a first occurrence on Feb 7th, the recurrence period would run from Feb 8th to Aug 9th. If the child had a recurrence in Aug 5th, that would be considered repeat maltreatment. If the child had a recurrence Oct 10th, that would not be considered repeat maltreatment because it fell outside the recurrence period.

Jan	Feb	Mar	Apr	May	Jun	Jul	Aug	Sep	Oct	Nov	Dec
Time Period (Jan 1 st to Dec 31 st)											
1 st Occurrence Time Period (Jan 1 st to Jun 30 th)											
			Recurrence Period (Feb 8 th to Aug 9 th)								

Percent of absence of repeat maltreatment – This calculations uses the terms defined above. The numerator is the number of children with a first occurrence minus the number of children with a recurrence. The denominator is the number of children with first occurrence.

$$\frac{(1^{\text{st}} \text{ Occurrence} - \text{Recurrence})}{1^{\text{st}} \text{ Occurrence}}$$

For the purposes of this report, the county the child is assigned to is based off the county of first occurrence. If a child has a recurrence in a different county, the repeat will show for the county of the first occurrence.



DCS Practice Indicator Report

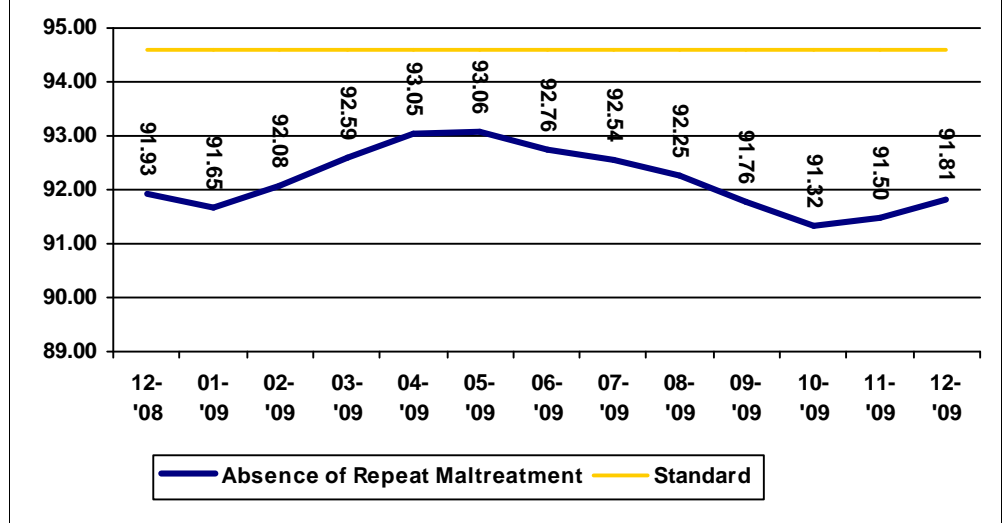
Absence of Repeat Maltreatment

For December 2009

December 2009

County	Victims from Jan 2009 to Jul 2009	Victims without a recurrence within 6 months	Absence of Repeat Maltreatment Percent	National Standard
Statewide	12,241	11,239	91.81%	94.60%
Region 18	665	609	91.58%	94.60%
Clark	295	266	90.17%	94.60%
Floyd	96	91	94.79%	94.60%
Harrison	91	85	93.41%	94.60%
Scott	135	121	89.63%	94.60%
Washington	48	46	95.83%	94.60%

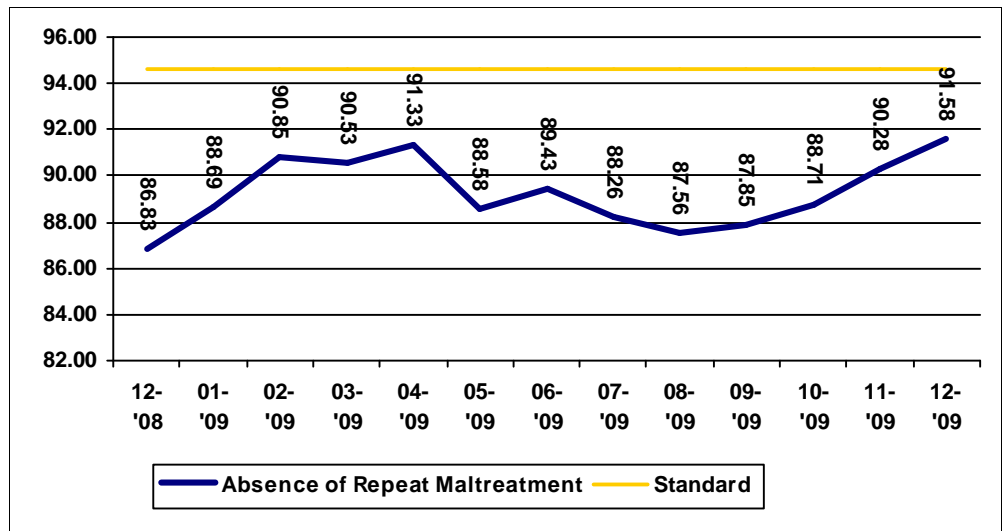
Statewide Absence of Repeat Maltreatment



Region 18 For December 2008 to December 2009

County	Victims from Jan 2009 to Jul 2009	Victims without a recurrence within 6 months	Absence of Repeat Maltreatment Percent	National Standard
December 2009	665	609	91.58%	94.60%
November 2009	648	585	90.28%	94.60%
October 2009	629	558	88.71%	94.60%
September 2009	601	528	87.85%	94.60%
August 2009	579	507	87.56%	94.60%
July 2009	579	511	88.26%	94.60%
June 2009	577	516	89.43%	94.60%
May 2009	569	504	88.58%	94.60%
April 2009	600	548	91.33%	94.60%
March 2009	655	593	90.53%	94.60%
February 2009	645	586	90.85%	94.60%
January 2009	628	557	88.69%	94.60%
December 2008	615	534	86.83%	94.60%

Region 18 Absence of Repeat Maltreatment





DCS Practice Indicator Report Absence of Maltreatment in Foster Care

For December 2009

Report Description

This is a description of the key elements used in this report.

Time Period – The time period used in this report is the 12 months prior to the month of the report.

Assessments during the time period – The assessment used in this report are assessment with BOTH report date AND approval date during the time period (12 months prior to the month of the report).

Victim of maltreatment in Foster Care – The children used in this report were identified as having at least one substantiated allegation of abuse or neglect on an assessment during the time period where the perpetrator is a foster parent or institutional staff.

Children in Foster Care during the time period – All CHINS children with an open removal episode at any time during the 12 months prior to the month of the report. Also included are Probation children (who are IV-E eligible) with an open removal episode at any time during the 12 months prior to the month of the report.

Percent of absence of repeat maltreatment – This calculations uses the terms defined above. The numerator is the number of children in foster care minus the number of victims of maltreatment in foster care. The denominator is the number of children in foster care.

$$\frac{(\text{Children in Foster Care} - \text{Victims of maltreatment in Foster Care})}{\text{Children in Foster Care}}$$



DCS Practice Indicator Report

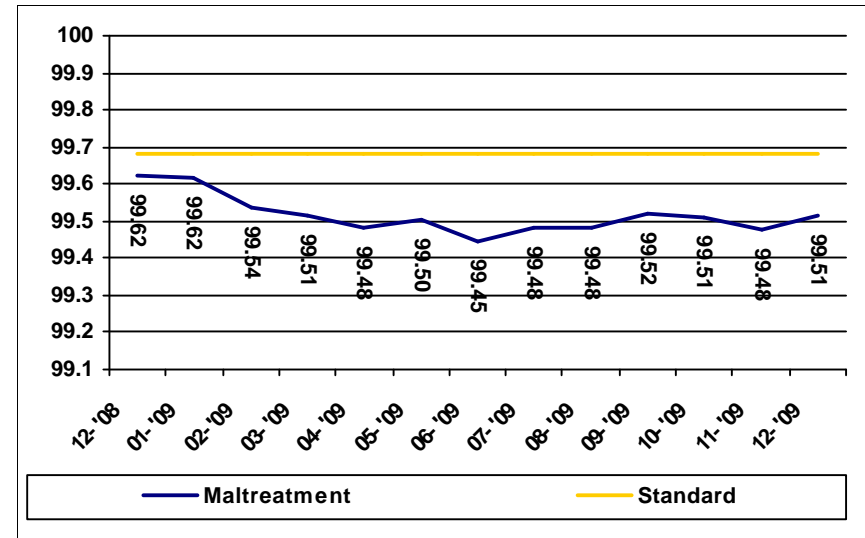
Absence of Maltreatment in Foster Care

For December 2009

For December 2009

Location	Children in Foster Care from Jan 2009 to Dec 2009	Substantiated Victims in Foster Care	Absence of Repeat Maltreatment Percent	National Standard
Statewide	21,946	107	99.51%	99.68%
Region 18	847	2	99.76%	99.68%
Clark	336	2	99.40%	99.68%
Floyd	136	0	100.00%	99.68%
Harrison	103	0	100.00%	99.68%
Scott	204	0	100.00%	99.68%
Washington	68	0	100.00%	99.68%

Statewide Trend of Absence of Maltreatment in Foster Care



Region 18 for December 2008 to December 2009

Month	Children in Foster Care from Jan 2009 to Dec 2009	Substantiated Victims in Foster Care	Absence of Repeat Maltreatment Percent	National Standard
December 2009	847	2	99.76%	99.68%
November 2009	832	3	99.64%	99.68%
October 2009	840	3	99.64%	99.68%
September 2009	842	3	99.64%	99.68%
August 2009	830	3	99.64%	99.68%
July 2009	825	3	99.64%	99.68%
June 2009	835	3	99.64%	99.68%
May 2009	852	3	99.65%	99.68%
April 2009	860	3	99.65%	99.68%
March 2009	854	2	99.77%	99.68%
February 2009	840	1	99.88%	99.68%
January 2009	855	1	99.88%	99.68%
December 2008	866	2	99.77%	99.68%

Region 18 Trend of Absence of Maltreatment in Foster Care

