



INDIANA  
DEPARTMENT OF  
CHILD  
SERVICES

Department of Child Services

Practice Indicator Reports

For December 2009

*Protecting our children,  
families and future*

# CHINS and IA Permanency Report

Data in the report (both historical and current) may be subject to change as it is continually being validated and updated. This may result in statistical data in previous reports to be inconsistent with statistics found in more recent reports even when the data pertain to the same time period.



Published  
January 2010



# DCS Practice Indicator Report CHINS and IA Permanency Report

For December 2009

## Report Description

This report uses CHINS and IA case types that have case type status end date occurring during the month. It then groups these cases using the closure reason codes into categories of closure reasons. Case with closure reason code "Case opened in error – disregard" are filtered out for the purpose of this report.

Closure Reasons are group by:

Description	Category	Description	Category
Child Reunited with Parents	Reunification	Case closed; AG case created	Guardianship
Child never Removed from own home, wardship terminated	Reunification	Child placed with relatives	Relative
Extended wardship terminated (on court order for age 18 to 21)	Emancipation	Child Placed with Legal guardian	Guardianship
Child Returned to Primary Home	Reunification	Child Reached Age of Majority (age 18)	Emancipation
Period of IA ended code used for Informal Adjustment cases only	Reunification	Emancipated Court Ordered (age 18)	Emancipation
Child Adoption Finalized	Adoption	Child Already Reunited with parent (s) when wardship terminated	Reunification

The Permanency column "Total" refers to the total case with reason codes in the Reunification, Adoption, Relative, Guardianship, and Emancipation categories.

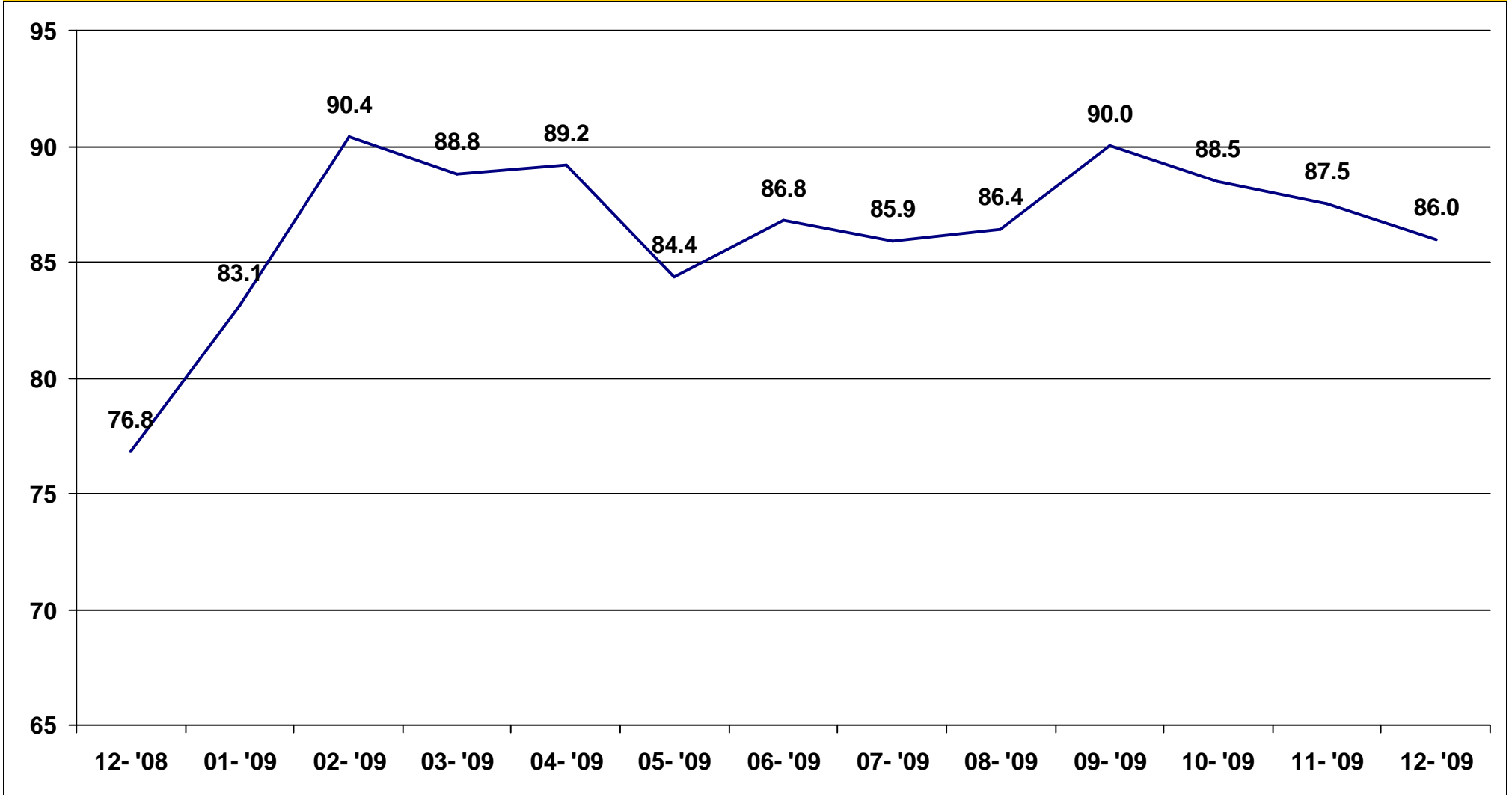
The Permanency column "Total within 24 months" refers to the total case that ended within 24 month of the case status type begin date in the Reunification, Adoption, Relative, Guardianship, and Emancipation categories.



# DCS Practice Indicator Report CHINS and IA Permanency Report

For December 2009

Statewide Permanency within 24 Months





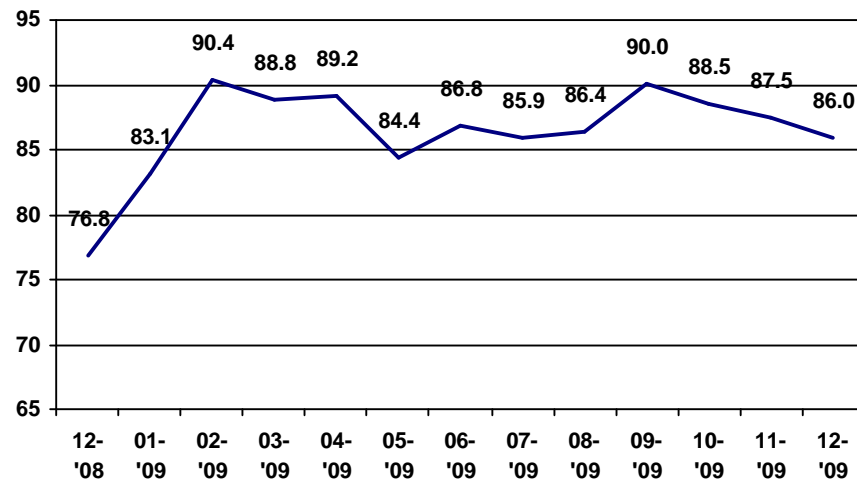
# DCS Practice Indicator Report CHINS and IA Permanency Report

For December 2009

## December 2009

Location	Closed Cases Types with Permanency Outcomes					Permanency		
	Reunification	Adoption	Relative	Guardianship	Emanicipation	Total	Within 24 Months	24 Month Rate
Statewide	726	96	33	74	25	954	820	86.0
Region 1	37	4	1	4	1	47	38	80.9
Lake	37	4	1	4	1	47	38	80.9

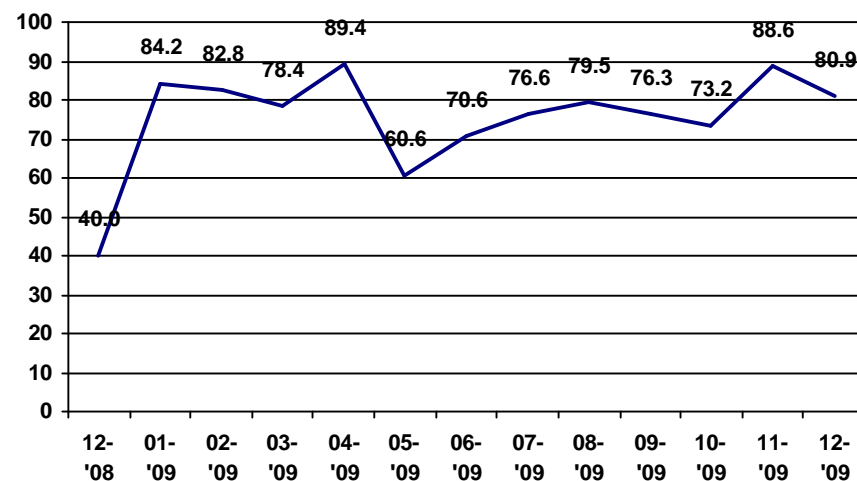
## Statewide Permanency within 24 Months



## Region 1 For December 2008 to December 2009

Location	Closed Cases Types with Permanency Outcomes					Permanency		
	Reunification	Adoption	Relative	Guardianship	Emanicipation	Total	Within 24 Months	24 Month Rate
Dec 2009	37	4	1	4	1	47	38	80.9
Nov 2009	66	10	0	2	1	79	70	88.6
Oct 2009	29	7	0	4	1	41	30	73.2
Sep 2009	30	1	0	4	3	38	29	76.3
Aug 2009	32	5	1	2	4	44	35	79.5
Jul 2009	34	6	1	2	4	47	36	76.6
Jun 2009	26	6	0	2	0	34	24	70.6
May 2009	23	4	0	2	4	33	20	60.6
Apr 2009	43	3	0	0	1	47	42	89.4
Mar 2009	30	4	0	0	3	37	29	78.4
Feb 2009	48	4	1	1	4	58	48	82.8
Jan 2009	34	2	0	0	2	38	32	84.2
Dec 2008	38	36	0	2	4	80	32	40.0

## Region 1 Permanency within 24 Months





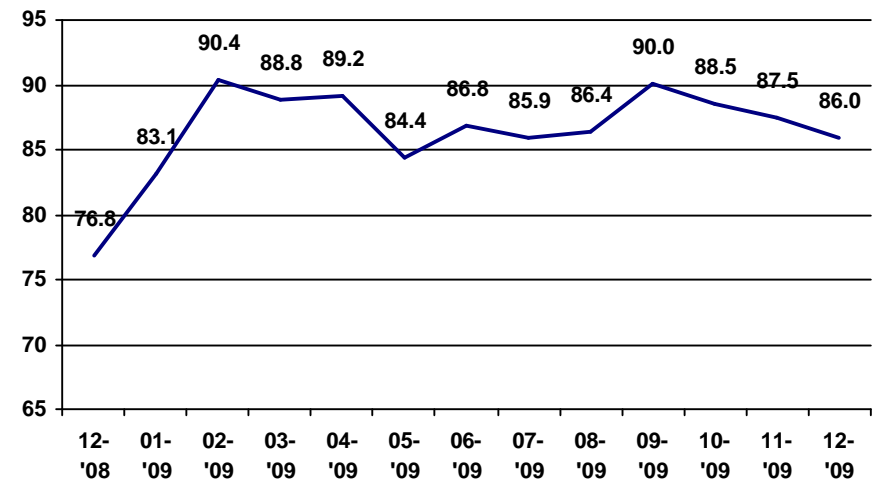
# DCS Practice Indicator Report CHINS and IA Permanency Report

For December 2009

## December 2009

Location	Closed Cases Types with Permanency Outcomes					Permanency		
	Reunification	Adoption	Relative	Guardianship	Emanicipation	Total	Within 24 Months	24 Month Rate
Statewide	726	96	33	74	25	954	820	86.0
Region 2	21	3	0	2	2	28	22	78.6
Jasper	7	2	0	1	1	11	8	72.7
Laporte	1	0	0	0	0	1	1	100.0
Newton	5	0	0	0	0	5	5	100.0
Porter	4	1	0	0	1	6	4	66.7
Pulaski	0	0	0	0	0	0	0	NA
Starke	4	0	0	1	0	5	4	80.0

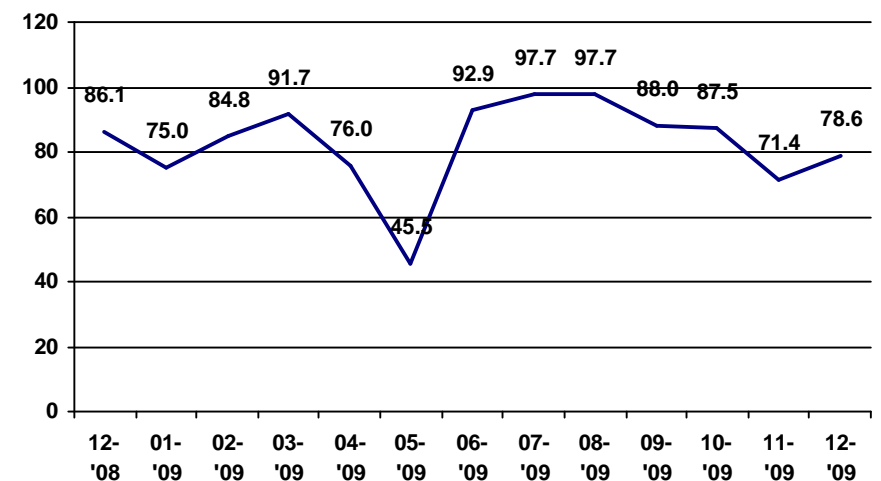
## Statewide Permanency within 24 Months



## Region 2 For December 2008 to December 2009

Location	Closed Cases Types with Permanency Outcomes					Permanency		
	Reunification	Adoption	Relative	Guardianship	Emanicipation	Total	Within 24 Months	24 Month Rate
Dec 2009	21	3	0	2	2	28	22	78.6
Nov 2009	6	3	0	5	0	14	10	71.4
Oct 2009	22	2	0	4	4	32	28	87.5
Sep 2009	19	0	2	0	4	25	22	88.0
Aug 2009	32	4	0	6	1	43	42	97.7
Jul 2009	32	4	0	6	1	43	42	97.7
Jun 2009	11	0	0	2	1	14	13	92.9
May 2009	8	2	0	0	1	11	5	45.5
Apr 2009	18	3	0	3	1	25	19	76.0
Mar 2009	16	0	0	7	1	24	22	91.7
Feb 2009	20	4	3	6	0	33	28	84.8
Jan 2009	15	9	2	4	2	32	24	75.0
Dec 2008	17	13	0	6	0	36	31	86.1

## Region 2 Permanency within 24 Months





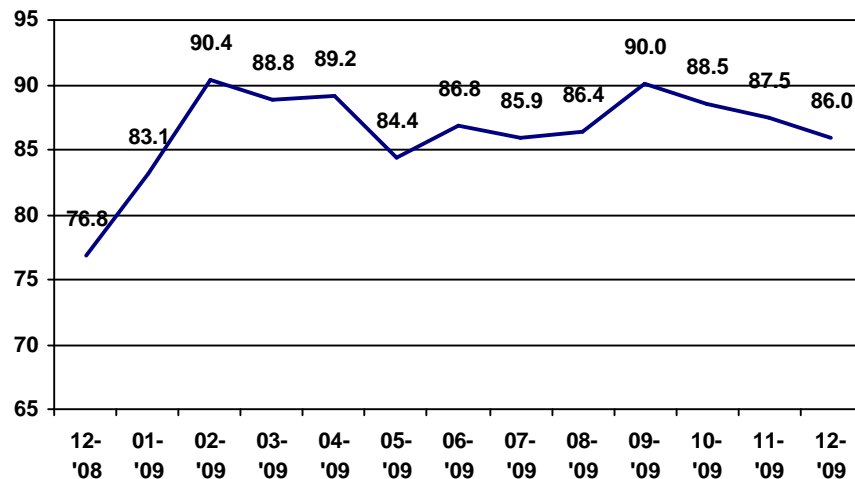
# DCS Practice Indicator Report CHINS and IA Permanency Report

For December 2009

## December 2009

Location	Closed Cases Types with Permanency Outcomes					Permanency		
	Reunification	Adoption	Relative	Guardianship	Emanicipation	Total	Within 24 Months	24 Month Rate
Statewide	726	96	33	74	25	954	820	86.0
Region 3	74	8	6	9	3	100	76	76.0
Elkhart	25	0	0	6	0	31	24	77.4
Kosciusko	2	0	0	1	0	3	2	66.7
Marshall	5	0	0	0	0	5	5	100.0
Saint Joseph	42	8	6	2	3	61	45	73.8

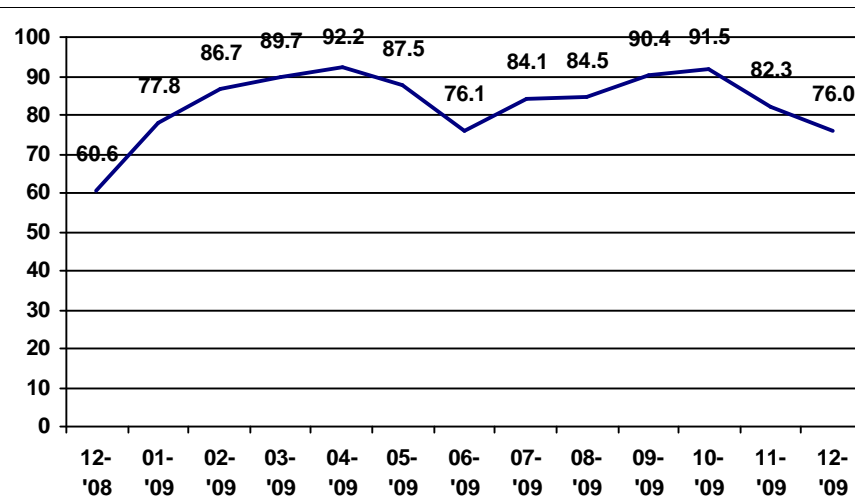
## Statewide Permanency within 24 Months



## Region 3 For December 2008 to December 2009

Location	Closed Cases Types with Permanency Outcomes					Permanency		
	Reunification	Adoption	Relative	Guardianship	Emanicipation	Total	Within 24 Months	24 Month Rate
Dec 2009	74	8	6	9	3	100	76	76.0
Nov 2009	48	4	0	6	4	62	51	82.3
Oct 2009	54	4	3	7	3	71	65	91.5
Sep 2009	84	0	1	3	6	94	85	90.4
Aug 2009	57	5	0	5	4	71	60	84.5
Jul 2009	66	6	0	5	5	82	69	84.1
Jun 2009	54	3	4	5	5	71	54	76.1
May 2009	42	8	3	1	2	56	49	87.5
Apr 2009	47	4	0	0	0	51	47	92.2
Mar 2009	54	0	1	2	1	58	52	89.7
Feb 2009	38	2	0	3	2	45	39	86.7
Jan 2009	47	0	1	2	4	54	42	77.8
Dec 2008	53	73	0	4	2	132	80	60.6

## Region 3 Permanency within 24 Months





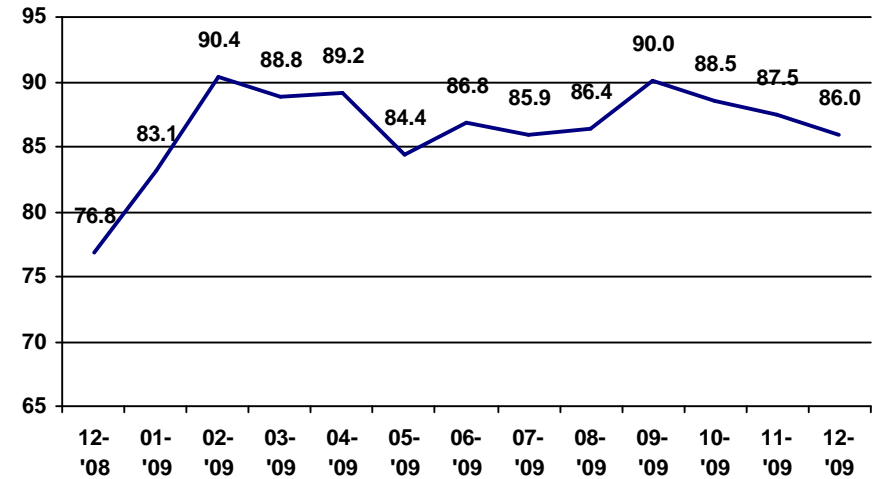
# DCS Practice Indicator Report CHINS and IA Permanency Report

For December 2009

## December 2009

Location	Closed Cases Types with Permanency Outcomes					Permanency		
	Reunification	Adoption	Relative	Guardianship	Emanicipation	Total	Within 24 Months	24 Month Rate
Statewide	726	96	33	74	25	954	820	86.0
Region 4	58	31	13	12	4	118	77	65.3
Adams	3	0	1	0	0	4	4	100.0
Allen	38	31	8	7	1	85	45	52.9
Dekalb	5	0	0	3	2	10	10	100.0
Huntington	2	0	0	0	0	2	2	100.0
LaGrange	1	0	0	1	0	2	2	100.0
Noble	3	0	4	1	1	9	8	88.9
Steuben	4	0	0	0	0	4	4	100.0
Wells	1	0	0	0	0	1	1	100.0
Whitley	1	0	0	0	0	1	1	100.0

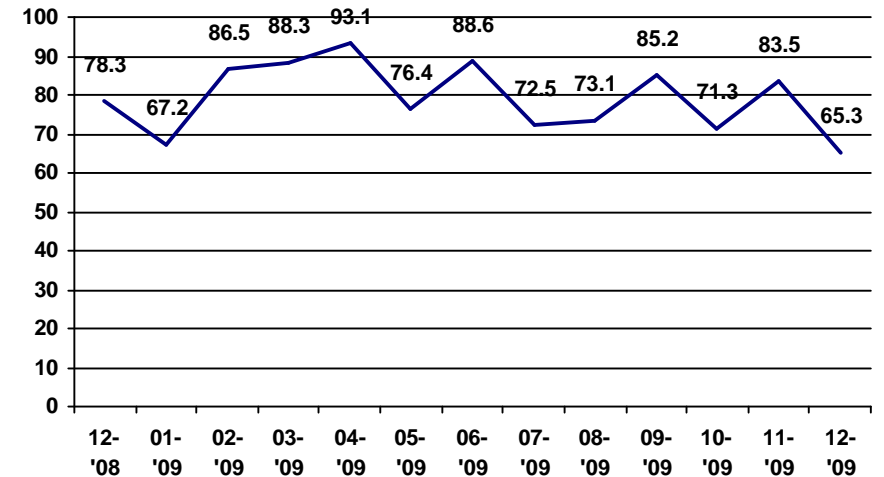
## Statewide Permanency within 24 Months



## Region 4 For December 2008 to December 2009

Location	Closed Cases Types with Permanency Outcomes					Permanency		
	Reunification	Adoption	Relative	Guardianship	Emanicipation	Total	Within 24 Months	24 Month Rate
Dec 2009	58	31	13	12	4	118	77	65.3
Nov 2009	66	1	4	5	3	79	66	83.5
Oct 2009	63	19	6	4	2	94	67	71.3
Sep 2009	69	3	2	2	5	81	69	85.2
Aug 2009	56	13	2	1	6	78	57	73.1
Jul 2009	58	13	2	1	6	80	58	72.5
Jun 2009	65	3	1	7	3	79	70	88.6
May 2009	71	3	4	5	6	89	68	76.4
Apr 2009	70	2	7	3	5	87	81	93.1
Mar 2009	92	0	2	6	3	103	91	88.3
Feb 2009	74	7	3	2	3	89	77	86.5
Jan 2009	75	31	1	8	4	119	80	67.2
Dec 2008	62	20	4	15	5	106	83	78.3

## Region 4 Permanency within 24 Months





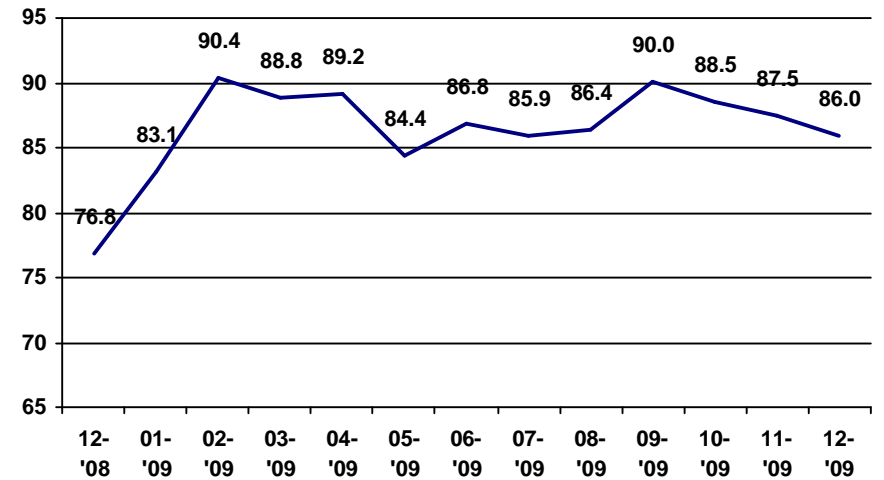
# DCS Practice Indicator Report CHINS and IA Permanency Report

For December 2009

## December 2009

Location	Closed Cases Types with Permanency Outcomes					Permanency		
	Reunification	Adoption	Relative	Guardianship	Emanicipation	Total	Within 24 Months	24 Month Rate
Statewide	726	96	33	74	25	954	820	86.0
Region 5	16	7	3	2	0	28	23	82.1
Benton	0	0	0	0	0	0	0	NA
Carroll	0	0	0	0	0	0	0	NA
Clinton	1	0	2	0	0	3	3	100.0
Fountain	3	4	0	0	0	7	3	42.9
Tippecanoe	11	2	1	1	0	15	15	100.0
Warren	0	0	0	0	0	0	0	NA
White	1	1	0	1	0	3	2	66.7

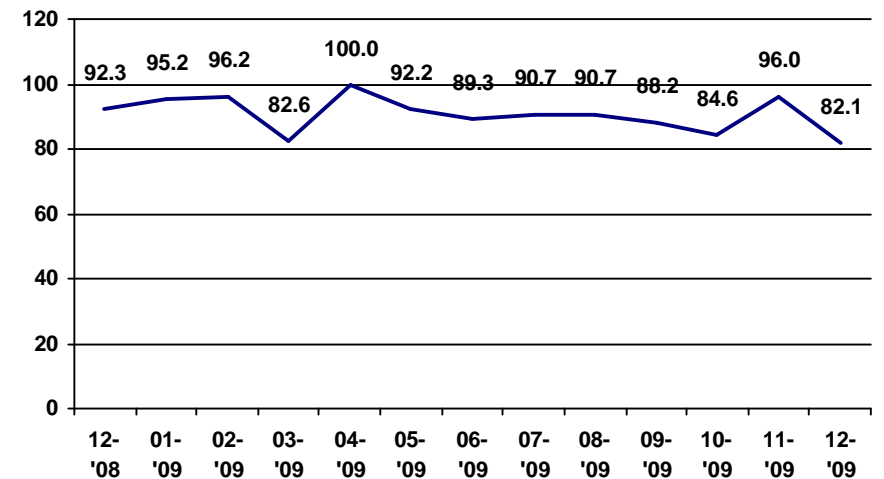
## Statewide Permanency within 24 Months



## Region 5 For December 2008 to December 2009

Location	Closed Cases Types with Permanency Outcomes					Permanency		
	Reunification	Adoption	Relative	Guardianship	Emanicipation	Total	Within 24 Months	24 Month Rate
Dec 2009	16	7	3	2	0	28	23	82.1
Nov 2009	37	6	3	3	1	50	48	96.0
Oct 2009	27	7	0	4	1	39	33	84.6
Sep 2009	41	5	0	4	1	51	45	88.2
Aug 2009	41	7	4	1	1	54	49	90.7
Jul 2009	41	7	4	1	1	54	49	90.7
Jun 2009	19	6	0	1	2	28	25	89.3
May 2009	39	8	0	3	1	51	47	92.2
Apr 2009	31	2	0	3	0	36	36	100.0
Mar 2009	35	5	3	0	3	46	38	82.6
Feb 2009	47	1	0	3	1	52	50	96.2
Jan 2009	39	2	0	1	0	42	40	95.2
Dec 2008	46	14	0	4	1	65	60	92.3

## Region 5 Permanency within 24 Months





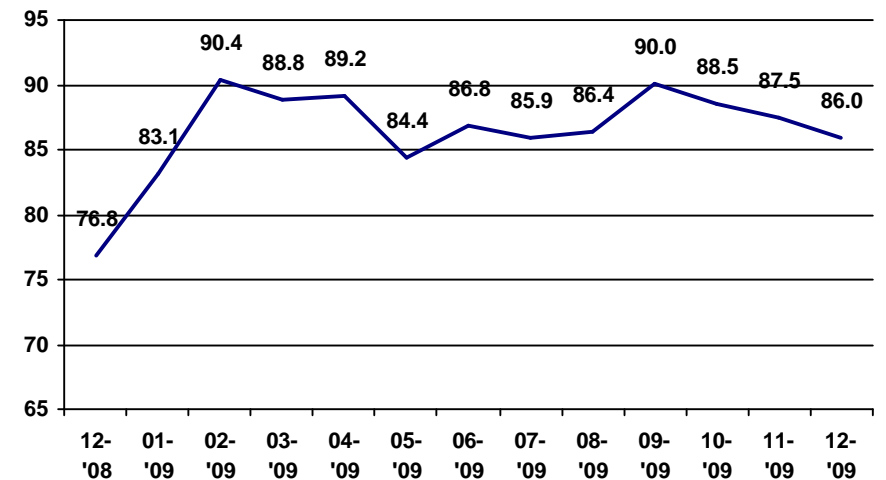
# DCS Practice Indicator Report CHINS and IA Permanency Report

For December 2009

## December 2009

Location	Closed Cases Types with Permanency Outcomes					Permanency		
	Reunification	Adoption	Relative	Guardianship	Emanicipation	Total	Within 24 Months	24 Month Rate
Statewide	726	96	33	74	25	954	820	86.0
Region 6	16	0	0	3	0	19	19	100.0
Cass	0	0	0	0	0	0	0	NA
Fulton	6	0	0	0	0	6	6	100.0
Howard	2	0	0	3	0	5	5	100.0
Miami	8	0	0	0	0	8	8	100.0
Wabash	0	0	0	0	0	0	0	NA

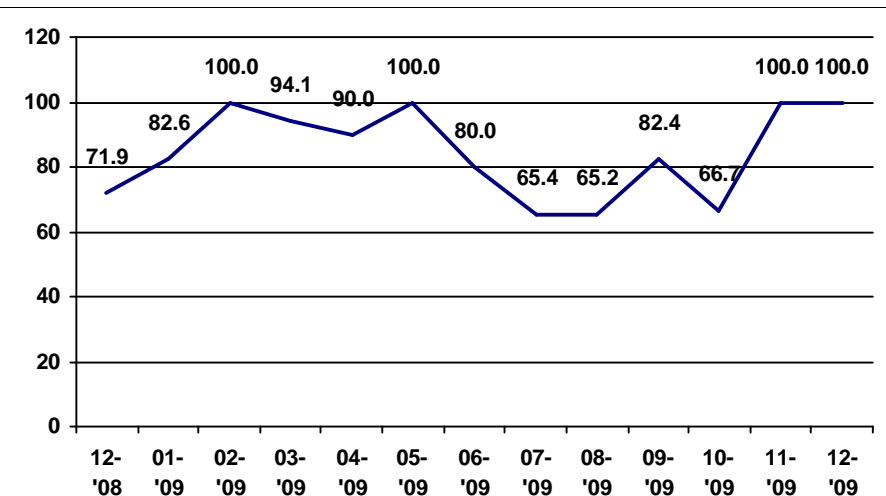
## Statewide Permanency within 24 Months



## Region 6 For December 2008 to December 2009

Location	Closed Cases Types with Permanency Outcomes					Permanency		
	Reunification	Adoption	Relative	Guardianship	Emanicipation	Total	Within 24 Months	24 Month Rate
Dec 2009	16	0	0	3	0	19	19	100.0
Nov 2009	11	0	0	3	0	14	14	100.0
Oct 2009	3	0	0	0	0	3	2	66.7
Sep 2009	13	2	0	2	0	17	14	82.4
Aug 2009	14	6	1	0	2	23	15	65.2
Jul 2009	17	6	1	0	2	26	17	65.4
Jun 2009	23	1	1	0	0	25	20	80.0
May 2009	12	0	0	0	0	12	12	100.0
Apr 2009	17	1	0	2	0	20	18	90.0
Mar 2009	17	0	0	0	0	17	16	94.1
Feb 2009	17	0	0	2	0	19	19	100.0
Jan 2009	11	4	1	6	1	23	19	82.6
Dec 2008	18	7	1	5	1	32	23	71.9

## Region 6 Permanency within 24 Months





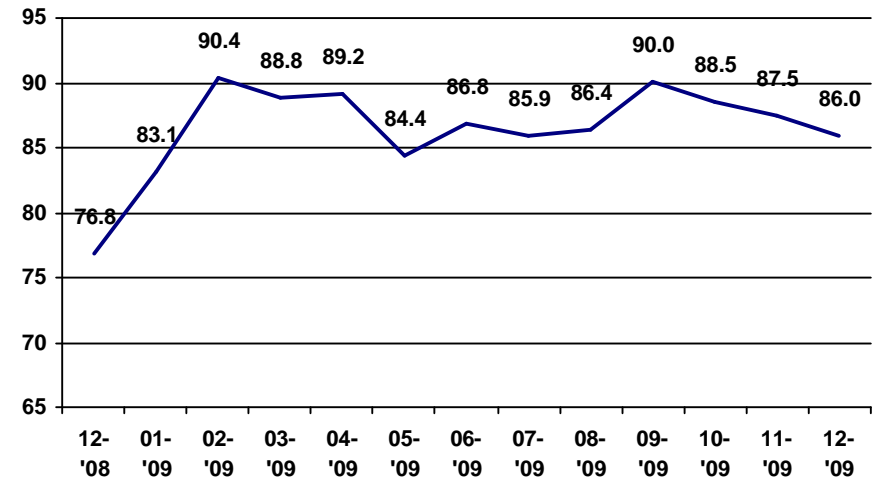
# DCS Practice Indicator Report CHINS and IA Permanency Report

For December 2009

## December 2009

Location	Closed Cases Types with Permanency Outcomes					Permanency		
	Reunification	Adoption	Relative	Guardianship	Emanicipation	Total	Within 24 Months	24 Month Rate
Statewide	726	96	33	74	25	954	820	86.0
Region 7	14	0	0	4	1	19	18	94.7
Blackford	1	0	0	0	0	1	1	100.0
Delaware	8	0	0	2	1	11	10	90.9
Grant	4	0	0	2	0	6	6	100.0
Jay	0	0	0	0	0	0	0	NA
Randolph	1	0	0	0	0	1	1	100.0

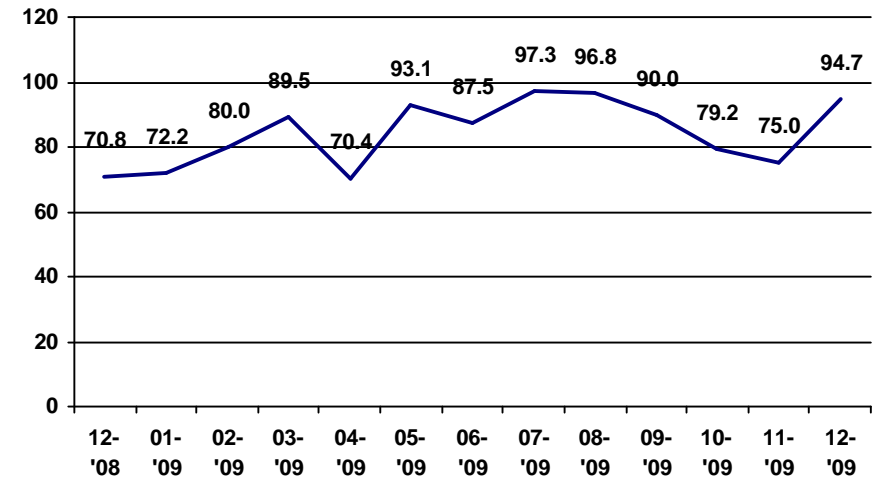
## Statewide Permanency within 24 Months



## Region 7 For December 2008 to December 2009

Location	Closed Cases Types with Permanency Outcomes					Permanency		
	Reunification	Adoption	Relative	Guardianship	Emanicipation	Total	Within 24 Months	24 Month Rate
Dec 2009	14	0	0	4	1	19	18	94.7
Nov 2009	22	4	0	2	0	28	21	75.0
Oct 2009	14	3	2	4	1	24	19	79.2
Sep 2009	35	2	0	3	0	40	36	90.0
Aug 2009	24	1	0	5	1	31	30	96.8
Jul 2009	30	1	0	5	1	37	36	97.3
Jun 2009	8	1	0	4	3	16	14	87.5
May 2009	26	1	1	0	1	29	27	93.1
Apr 2009	20	2	0	3	2	27	19	70.4
Mar 2009	35	0	0	3	0	38	34	89.5
Feb 2009	22	0	2	5	1	30	24	80.0
Jan 2009	20	6	3	3	4	36	26	72.2
Dec 2008	46	11	1	4	3	65	46	70.8

## Region 7 Permanency within 24 Months





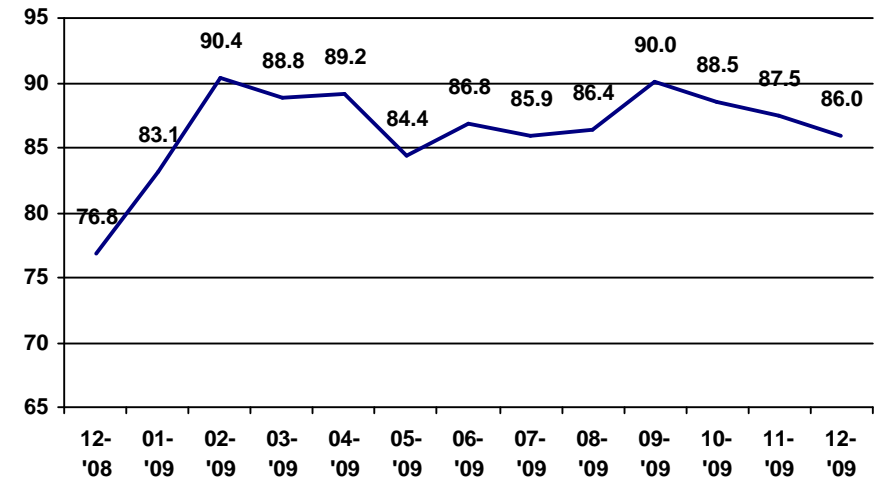
# DCS Practice Indicator Report CHINS and IA Permanency Report

For December 2009

## December 2009

Location	Closed Cases Types with Permanency Outcomes					Permanency		
	Reunification	Adoption	Relative	Guardianship	Emanicipation	Total	Within 24 Months	24 Month Rate
Statewide	726	96	33	74	25	954	820	86.0
Region 8	26	0	0	1	1	28	27	96.4
Clay	0	0	0	1	0	1	1	100.0
Parke	0	0	0	0	0	0	0	NA
Sullivan	0	0	0	0	0	0	0	NA
Vermillion	0	0	0	0	0	0	0	NA
Vigo	26	0	0	0	1	27	26	96.3

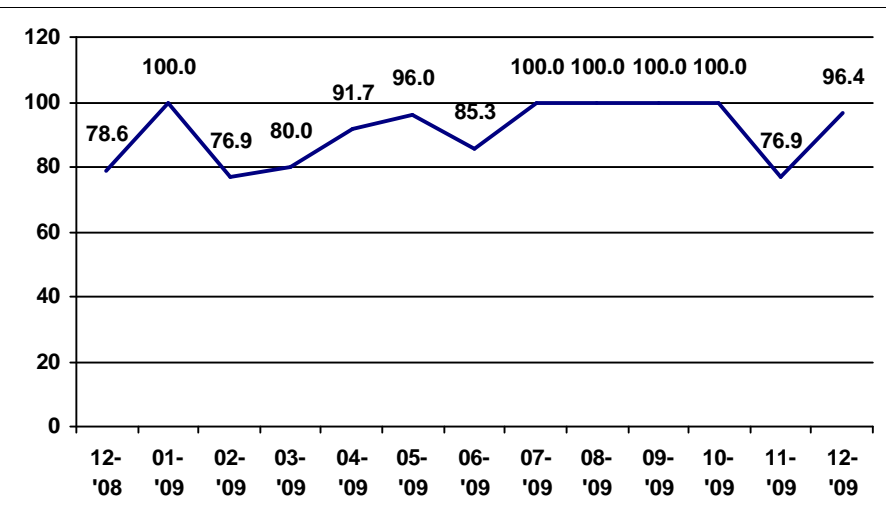
## Statewide Permanency within 24 Months



## Region 8 For December 2008 to December 2009

Location	Closed Cases Types with Permanency Outcomes					Permanency		
	Reunification	Adoption	Relative	Guardianship	Emanicipation	Total	Within 24 Months	24 Month Rate
Dec 2009	26	0	0	1	1	28	27	96.4
Nov 2009	11	2	0	0	0	13	10	76.9
Oct 2009	7	0	0	0	0	7	7	100.0
Sep 2009	8	2	0	1	0	11	11	100.0
Aug 2009	15	0	0	0	1	16	16	100.0
Jul 2009	15	0	0	0	1	16	16	100.0
Jun 2009	23	5	0	3	3	34	29	85.3
May 2009	20	1	0	4	0	25	24	96.0
Apr 2009	10	1	0	1	0	12	11	91.7
Mar 2009	13	7	0	0	0	20	16	80.0
Feb 2009	9	3	0	0	1	13	10	76.9
Jan 2009	18	0	1	0	0	19	19	100.0
Dec 2008	9	0	1	3	1	14	11	78.6

## Region 8 Permanency within 24 Months





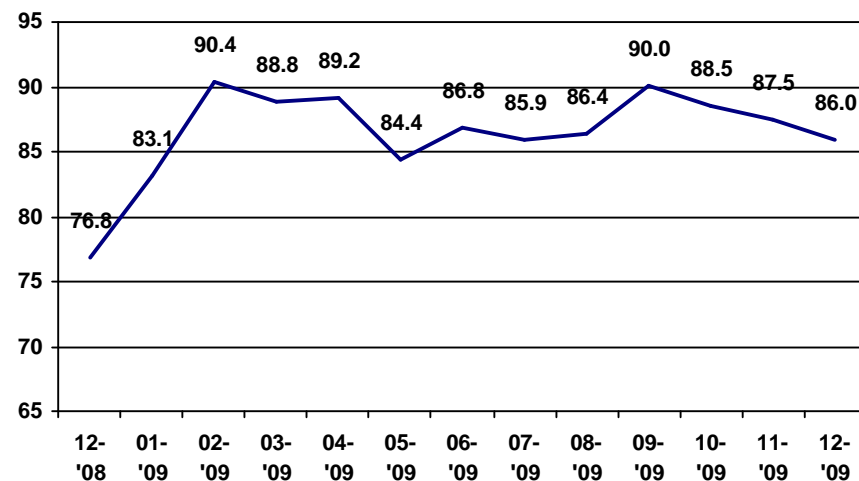
# DCS Practice Indicator Report CHINS and IA Permanency Report

For December 2009

## December 2009

Location	Closed Cases Types with Permanency Outcomes					Permanency		
	Reunification	Adoption	Relative	Guardianship	Emanicipation	Total	Within 24 Months	24 Month Rate
Statewide	726	96	33	74	25	954	820	86.0
Region 9	27	0	0	2	0	29	29	100.0
Boone	1	0	0	0	0	1	1	100.0
Hendricks	8	0	0	0	0	8	8	100.0
Montgomery	7	0	0	0	0	7	7	100.0
Morgan	2	0	0	0	0	2	2	100.0
Putnam	9	0	0	2	0	11	11	100.0

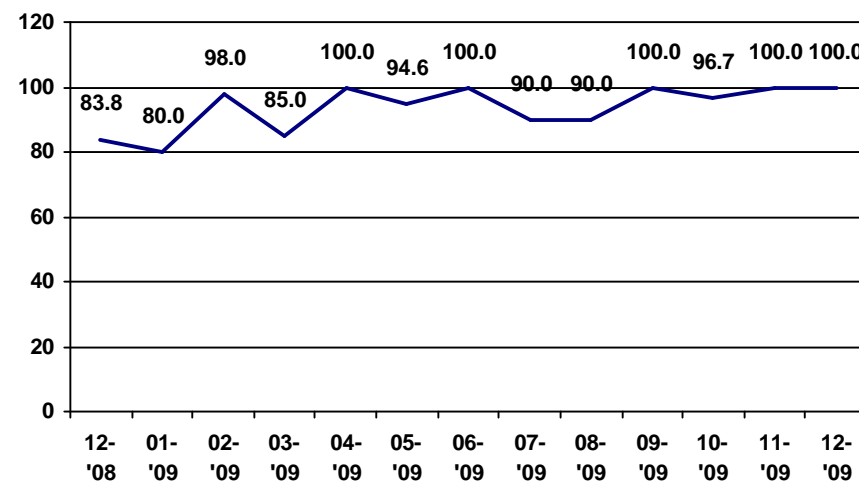
## Statewide Permanency within 24 Months



## Region 9 For December 2008 to December 2009

Location	Closed Cases Types with Permanency Outcomes					Permanency		
	Reunification	Adoption	Relative	Guardianship	Emanicipation	Total	Within 24 Months	24 Month Rate
Dec 2009	27	0	0	2	0	29	29	100.0
Nov 2009	25	1	0	3	0	29	29	100.0
Oct 2009	29	1	0	0	0	30	29	96.7
Sep 2009	21	0	0	4	0	25	25	100.0
Aug 2009	14	1	0	4	1	20	18	90.0
Jul 2009	14	1	0	4	1	20	18	90.0
Jun 2009	34	0	0	0	0	34	34	100.0
May 2009	34	2	0	1	0	37	35	94.6
Apr 2009	30	0	0	2	0	32	32	100.0
Mar 2009	11	3	0	5	1	20	17	85.0
Feb 2009	43	4	0	0	2	49	48	98.0
Jan 2009	26	6	0	3	0	35	28	80.0
Dec 2008	25	7	0	5	0	37	31	83.8

## Region 9 Permanency within 24 Months





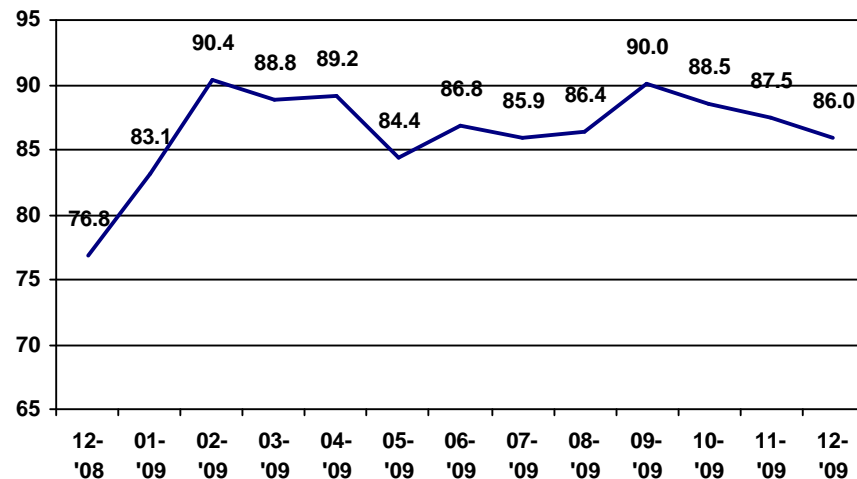
# DCS Practice Indicator Report CHINS and IA Permanency Report

For December 2009

## December 2009

Location	Closed Cases Types with Permanency Outcomes					Permanency		
	Reunification	Adoption	Relative	Guardianship	Emanicipation	Total	Within 24 Months	24 Month Rate
Statewide	726	96	33	74	25	954	820	86.0
Region 10	160	19	2	5	3	189	168	88.9
Marion	160	19	2	5	3	189	168	88.9

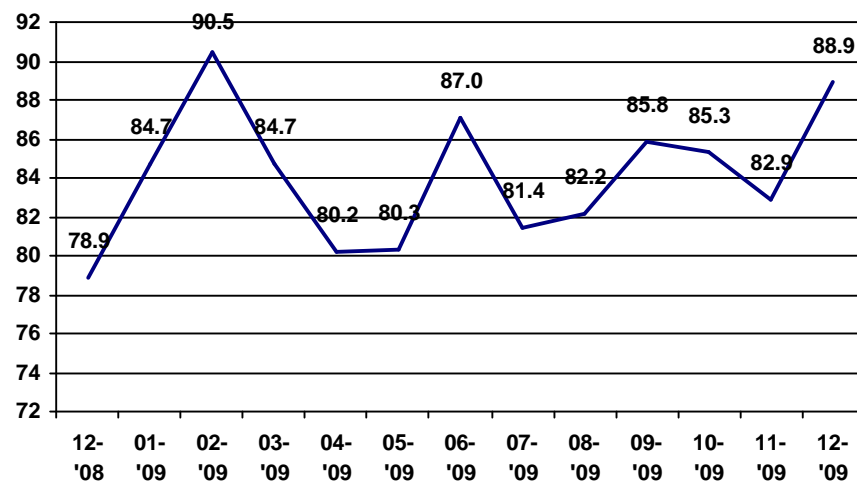
## Statewide Permanency within 24 Months



## Region 10 For December 2008 to December 2009

Location	Closed Cases Types with Permanency Outcomes					Permanency		
	Reunification	Adoption	Relative	Guardianship	Emanicipation	Total	Within 24 Months	24 Month Rate
Dec 2009	160	19	2	5	3	189	168	88.9
Nov 2009	116	27	4	3	2	152	126	82.9
Oct 2009	165	27	4	11	11	218	186	85.3
Sep 2009	144	20	0	3	9	176	151	85.8
Aug 2009	165	29	4	17	15	230	189	82.2
Jul 2009	168	32	4	17	16	237	193	81.4
Jun 2009	217	30	1	11	11	270	235	87.0
May 2009	148	38	5	9	8	208	167	80.3
Apr 2009	129	30	3	13	12	187	150	80.2
Mar 2009	207	23	2	10	7	249	211	84.7
Feb 2009	200	13	2	3	3	221	200	90.5
Jan 2009	209	39	2	8	4	262	222	84.7
Dec 2008	194	57	2	12	10	275	217	78.9

## Region 10 Permanency within 24 Months





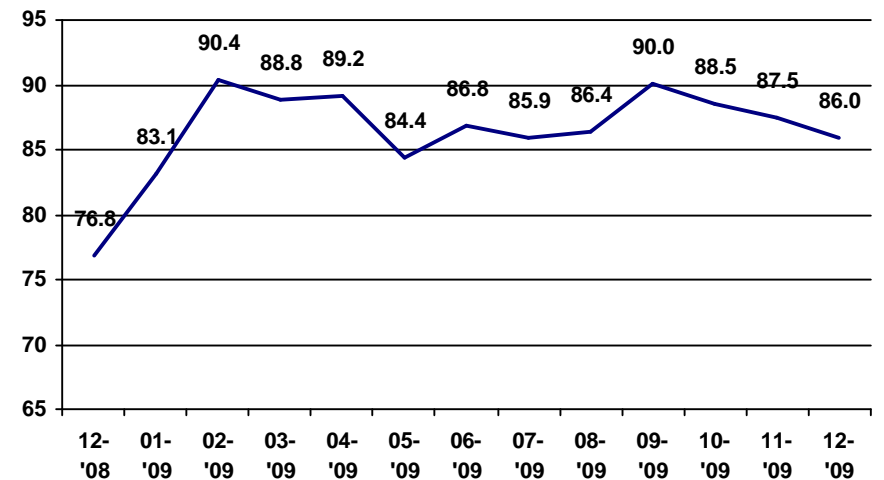
# DCS Practice Indicator Report CHINS and IA Permanency Report

For December 2009

## December 2009

Location	Closed Cases Types with Permanency Outcomes					Permanency		
	Reunification	Adoption	Relative	Guardianship	Emanicipation	Total	Within 24 Months	24 Month Rate
Statewide	726	96	33	74	25	954	820	86.0
Region 11	29	5	1	6	3	44	38	86.4
Hamilton	13	1	0	0	1	15	13	86.7
Hancock	4	0	0	0	0	4	4	100.0
Madison	12	4	1	6	1	24	21	87.5
Tipton	0	0	0	0	1	1	0	0.0

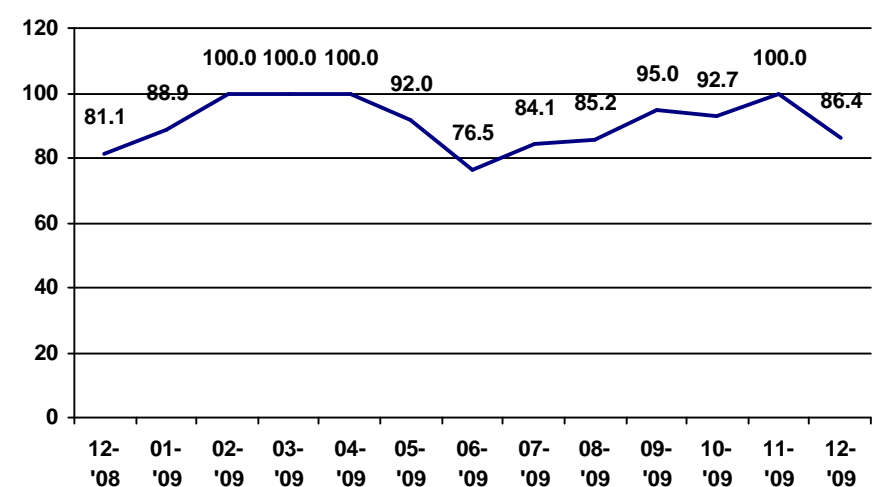
## Statewide Permanency within 24 Months



## Region 11 For December 2008 to December 2009

Location	Closed Cases Types with Permanency Outcomes					Permanency		
	Reunification	Adoption	Relative	Guardianship	Emanicipation	Total	Within 24 Months	24 Month Rate
Dec 2009	29	5	1	6	3	44	38	86.4
Nov 2009	17	0	0	3	2	22	22	100.0
Oct 2009	33	2	3	3	0	41	38	92.7
Sep 2009	17	0	0	3	0	20	19	95.0
Aug 2009	44	8	2	4	3	61	52	85.2
Jul 2009	45	9	2	4	3	63	53	84.1
Jun 2009	22	7	1	3	1	34	26	76.5
May 2009	22	0	1	1	1	25	23	92.0
Apr 2009	29	0	2	1	0	32	32	100.0
Mar 2009	26	0	2	1	0	29	29	100.0
Feb 2009	25	1	0	3	1	30	30	100.0
Jan 2009	26	1	2	5	2	36	32	88.9
Dec 2008	40	10	1	1	1	53	43	81.1

## Region 11 Permanency within 24 Months





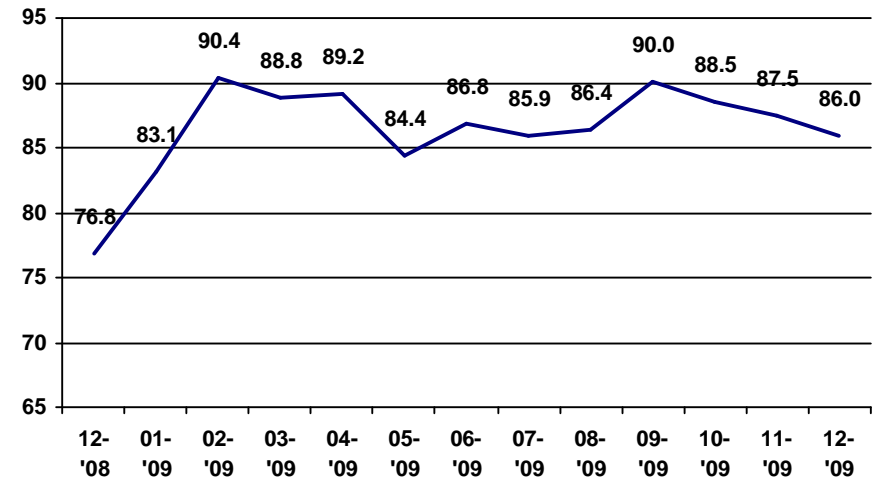
# DCS Practice Indicator Report CHINS and IA Permanency Report

For December 2009

## December 2009

Location	Closed Cases Types with Permanency Outcomes					Permanency		
	Reunification	Adoption	Relative	Guardianship	Emanicipation	Total	Within 24 Months	24 Month Rate
Statewide	726	96	33	74	25	954	820	86.0
Region 12	45	0	1	6	0	52	52	100.0
Fayette	2	0	0	0	0	2	2	100.0
Franklin	0	0	0	0	0	0	0	NA
Henry	18	0	1	2	0	21	21	100.0
Rush	20	0	0	1	0	21	21	100.0
Union	1	0	0	2	0	3	3	100.0
Wayne	4	0	0	1	0	5	5	100.0

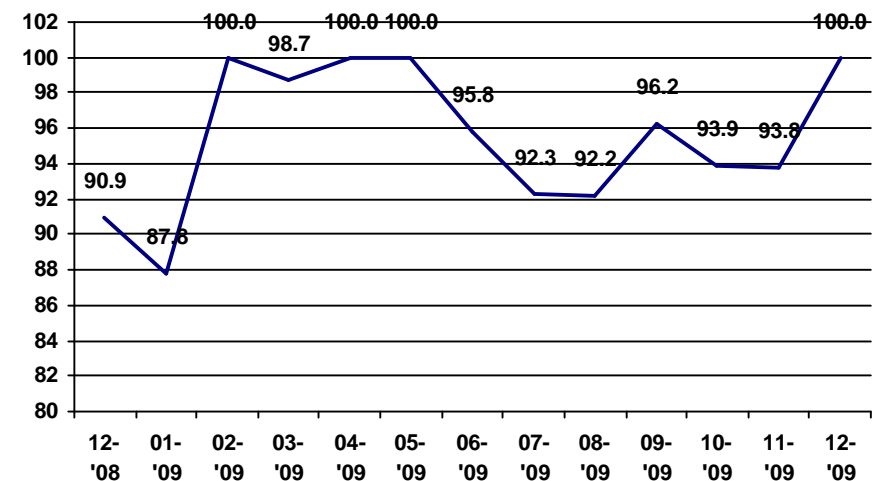
## Statewide Permanency within 24 Months



## Region 12 For December 2008 to December 2009

Location	Closed Cases Types with Permanency Outcomes					Permanency		
	Reunification	Adoption	Relative	Guardianship	Emanicipation	Total	Within 24 Months	24 Month Rate
Dec 2009	45	0	1	6	0	52	52	100.0
Nov 2009	42	5	0	1	0	48	45	93.8
Oct 2009	43	4	2	0	0	49	46	93.9
Sep 2009	51	0	0	0	2	53	51	96.2
Aug 2009	39	9	2	1	0	51	47	92.2
Jul 2009	40	9	2	1	0	52	48	92.3
Jun 2009	22	0	0	0	2	24	23	95.8
May 2009	40	1	0	3	1	45	45	100.0
Apr 2009	34	1	1	3	0	39	39	100.0
Mar 2009	73	2	0	0	2	77	76	98.7
Feb 2009	24	1	1	1	0	27	27	100.0
Jan 2009	31	6	0	3	1	41	36	87.8
Dec 2008	49	5	0	1	0	55	50	90.9

## Region 12 Permanency within 24 Months





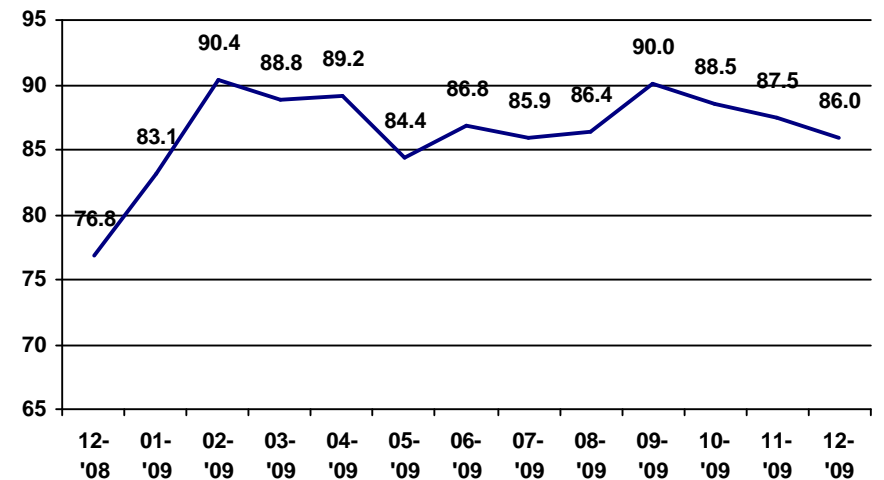
# DCS Practice Indicator Report CHINS and IA Permanency Report

For December 2009

## December 2009

Location	Closed Cases Types with Permanency Outcomes					Permanency		
	Reunification	Adoption	Relative	Guardianship	Emanicipation	Total	Within 24 Months	24 Month Rate
Statewide	726	96	33	74	25	954	820	86.0
Region 13	26	6	0	2	0	34	30	88.2
Brown	6	0	0	0	0	6	6	100.0
Greene	2	2	0	0	0	4	3	75.0
Lawrence	7	0	0	0	0	7	7	100.0
Monroe	9	4	0	0	0	13	10	76.9
Owen	2	0	0	2	0	4	4	100.0

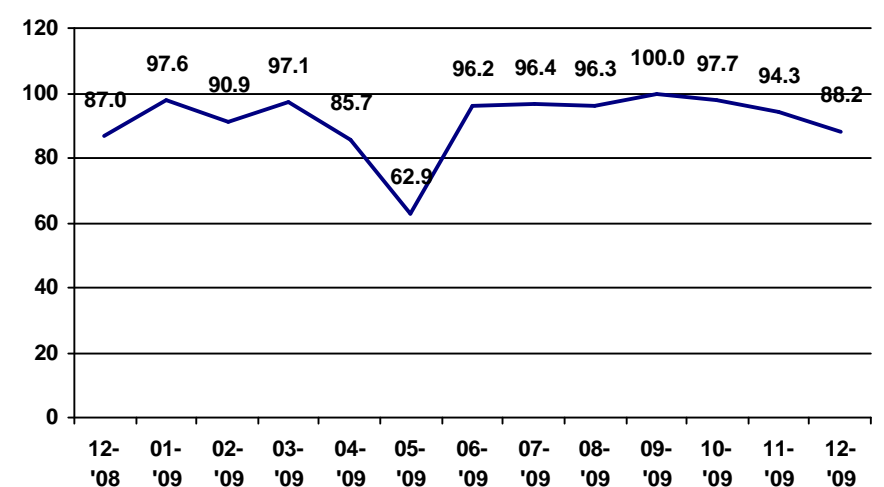
## Statewide Permanency within 24 Months



## Region 13 For December 2008 to December 2009

Location	Closed Cases Types with Permanency Outcomes					Permanency		
	Reunification	Adoption	Relative	Guardianship	Emanicipation	Total	Within 24 Months	24 Month Rate
Dec 2009	26	6	0	2	0	34	30	88.2
Nov 2009	32	1	1	1	0	35	33	94.3
Oct 2009	34	1	0	7	1	43	42	97.7
Sep 2009	33	3	0	1	0	37	37	100.0
Aug 2009	50	1	0	2	1	54	52	96.3
Jul 2009	51	1	0	3	1	56	54	96.4
Jun 2009	21	0	0	2	3	26	25	96.2
May 2009	22	11	0	1	1	35	22	62.9
Apr 2009	25	3	0	0	0	28	24	85.7
Mar 2009	29	0	0	5	0	34	33	97.1
Feb 2009	26	6	1	0	0	33	30	90.9
Jan 2009	34	5	0	1	1	41	40	97.6
Dec 2008	41	4	0	8	1	54	47	87.0

## Region 13 Permanency within 24 Months





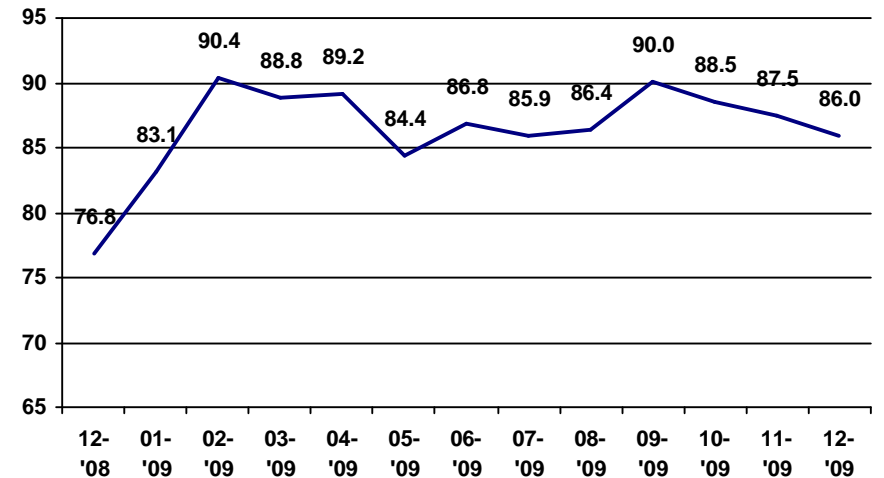
# DCS Practice Indicator Report CHINS and IA Permanency Report

For December 2009

## December 2009

Location	Closed Cases Types with Permanency Outcomes					Permanency		
	Reunification	Adoption	Relative	Guardianship	Emanicipation	Total	Within 24 Months	24 Month Rate
Statewide	726	96	33	74	25	954	820	86.0
Region 14	31	3	0	5	2	41	36	87.8
Bartholomew	0	1	0	1	0	2	1	50.0
Jackson	1	1	0	1	1	4	3	75.0
Jennings	8	1	0	0	0	9	8	88.9
Johnson	22	0	0	3	1	26	24	92.3
Shelby	0	0	0	0	0	0	0	NA

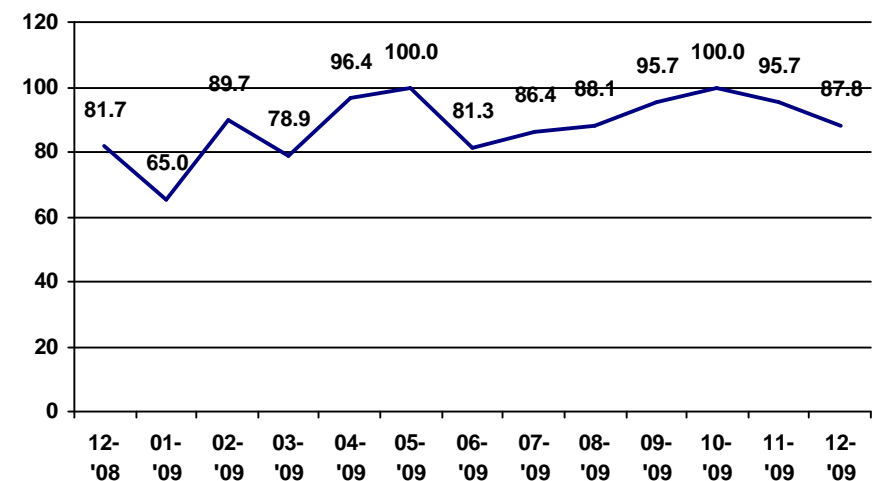
## Statewide Permanency within 24 Months



## Region 14 For December 2008 to December 2009

Location	Closed Cases Types with Permanency Outcomes					Permanency		
	Reunification	Adoption	Relative	Guardianship	Emanicipation	Total	Within 24 Months	24 Month Rate
Dec 2009	31	3	0	5	2	41	36	87.8
Nov 2009	21	0	0	1	1	23	22	95.7
Oct 2009	24	0	0	1	0	25	25	100.0
Sep 2009	20	1	1	0	1	23	22	95.7
Aug 2009	32	5	0	5	0	42	37	88.1
Jul 2009	32	5	0	6	1	44	38	86.4
Jun 2009	12	0	0	1	3	16	13	81.3
May 2009	7	2	0	4	0	13	13	100.0
Apr 2009	24	0	1	3	0	28	27	96.4
Mar 2009	14	2	0	3	0	19	15	78.9
Feb 2009	25	2	0	1	1	29	26	89.7
Jan 2009	22	13	1	3	1	40	26	65.0
Dec 2008	38	10	2	9	1	60	49	81.7

## Region 14 Permanency within 24 Months





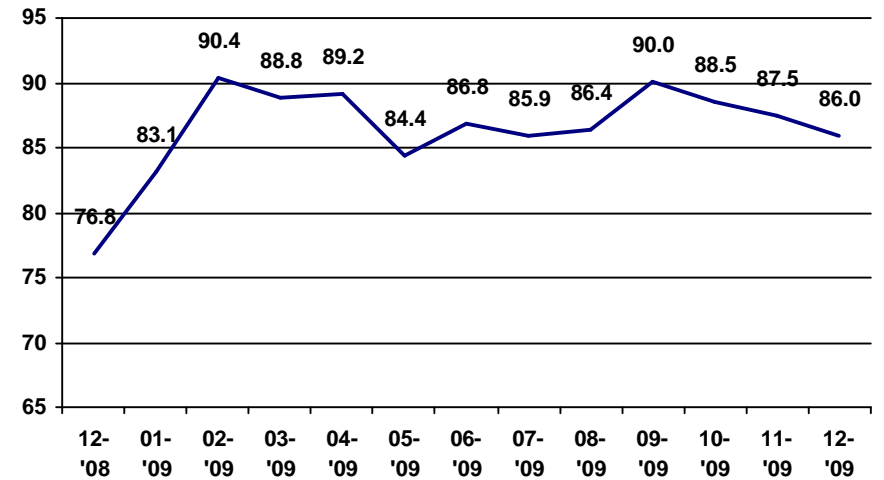
# DCS Practice Indicator Report CHINS and IA Permanency Report

For December 2009

## December 2009

Location	Closed Cases Types with Permanency Outcomes					Permanency		
	Reunification	Adoption	Relative	Guardianship	Emanicipation	Total	Within 24 Months	24 Month Rate
Statewide	726	96	33	74	25	954	820	86.0
Region 15	30	0	0	0	1	31	30	96.8
Dearborn	7	0	0	0	1	8	7	87.5
Decatur	6	0	0	0	0	6	6	100.0
Jefferson	8	0	0	0	0	8	8	100.0
Ohio	1	0	0	0	0	1	1	100.0
Ripley	5	0	0	0	0	5	5	100.0
Switzerland	3	0	0	0	0	3	3	100.0

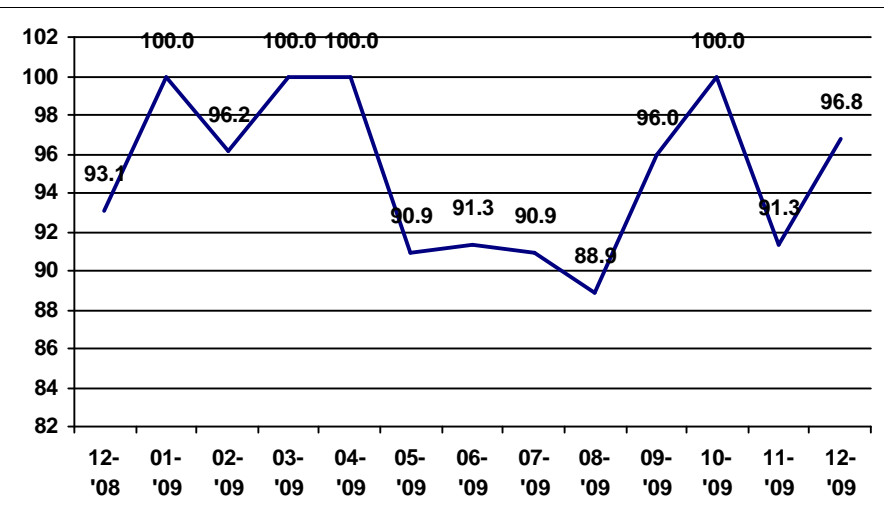
## Statewide Permanency within 24 Months



## Region 15 For December 2008 to December 2009

Location	Closed Cases Types with Permanency Outcomes					Permanency		
	Reunification	Adoption	Relative	Guardianship	Emanicipation	Total	Within 24 Months	24 Month Rate
Dec 2009	30	0	0	0	1	31	30	96.8
Nov 2009	20	2	0	1	0	23	21	91.3
Oct 2009	42	0	1	0	0	43	43	100.0
Sep 2009	22	0	0	1	2	25	24	96.0
Aug 2009	16	1	0	0	1	18	16	88.9
Jul 2009	20	1	0	0	1	22	20	90.9
Jun 2009	39	0	0	2	5	46	42	91.3
May 2009	20	0	0	1	1	22	20	90.9
Apr 2009	30	0	0	1	0	31	31	100.0
Mar 2009	17	0	0	0	0	17	17	100.0
Feb 2009	21	0	2	2	1	26	25	96.2
Jan 2009	25	0	0	3	0	28	28	100.0
Dec 2008	50	4	0	3	1	58	54	93.1

## Region 15 Permanency within 24 Months





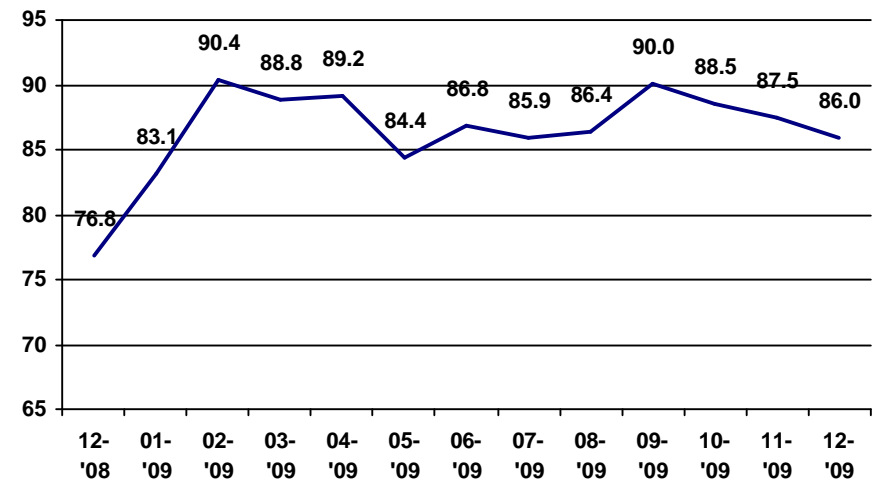
# DCS Practice Indicator Report CHINS and IA Permanency Report

For December 2009

## December 2009

Location	Closed Cases Types with Permanency Outcomes					Permanency		
	Reunification	Adoption	Relative	Guardianship	Emanicipation	Total	Within 24 Months	24 Month Rate
Statewide	726	96	33	74	25	954	820	86.0
Region 16	60	7	2	2	2	73	68	93.2
Gibson	8	0	0	0	0	8	8	100.0
Knox	13	1	0	0	0	14	14	100.0
Pike	5	1	0	0	0	6	6	100.0
Posey	8	1	0	0	0	9	8	88.9
Vanderburgh	25	4	2	2	2	35	31	88.6
Warrick	1	0	0	0	0	1	1	100.0

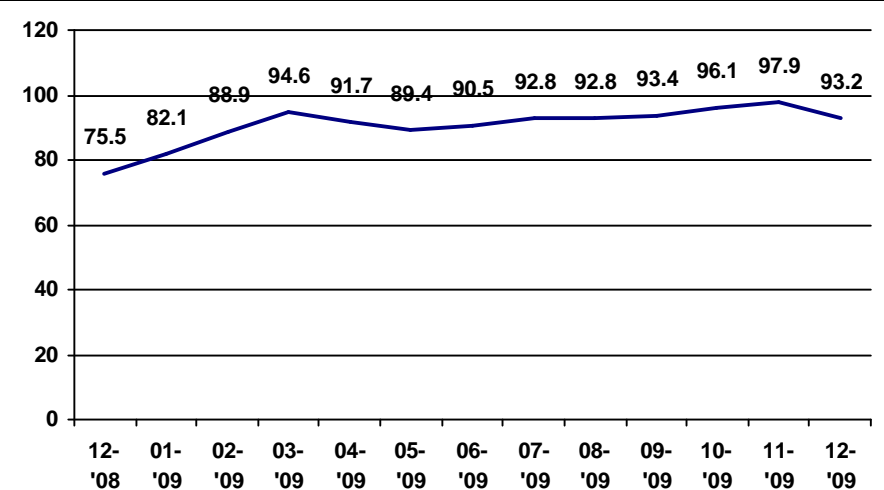
## Statewide Permanency within 24 Months



## Region 16 For December 2008 to December 2009

Location	Closed Cases Types with Permanency Outcomes					Permanency		
	Reunification	Adoption	Relative	Guardianship	Emanicipation	Total	Within 24 Months	24 Month Rate
Dec 2009	60	7	2	2	2	73	68	93.2
Nov 2009	37	1	0	9	0	47	46	97.9
Oct 2009	71	2	2	0	1	76	73	96.1
Sep 2009	67	6	0	1	2	76	71	93.4
Aug 2009	49	8	1	8	3	69	64	92.8
Jul 2009	49	8	1	8	3	69	64	92.8
Jun 2009	65	5	1	2	1	74	67	90.5
May 2009	55	10	0	1	0	66	59	89.4
Apr 2009	67	1	2	2	0	72	66	91.7
Mar 2009	45	3	4	3	1	56	53	94.6
Feb 2009	44	3	0	5	2	54	48	88.9
Jan 2009	46	8	0	0	2	56	46	82.1
Dec 2008	71	35	0	3	1	110	83	75.5

## Region 16 Permanency within 24 Months





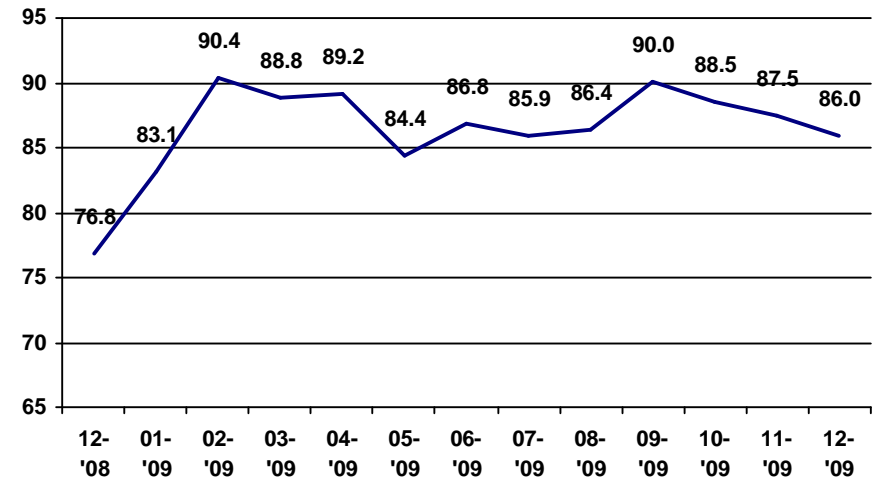
# DCS Practice Indicator Report CHINS and IA Permanency Report

For December 2009

## December 2009

Location	Closed Cases Types with Permanency Outcomes					Permanency		
	Reunification	Adoption	Relative	Guardianship	Emanicipation	Total	Within 24 Months	24 Month Rate
Statewide	726	96	33	74	25	954	820	86.0
Region 17	31	2	3	0	2	38	36	94.7
Crawford	4	2	0	0	0	6	6	100.0
Daviess	2	0	3	0	1	6	5	83.3
Dubois	9	0	0	0	0	9	9	100.0
Martin	1	0	0	0	0	1	1	100.0
Orange	2	0	0	0	0	2	2	100.0
Perry	1	0	0	0	1	2	1	50.0
Spencer	12	0	0	0	0	12	12	100.0

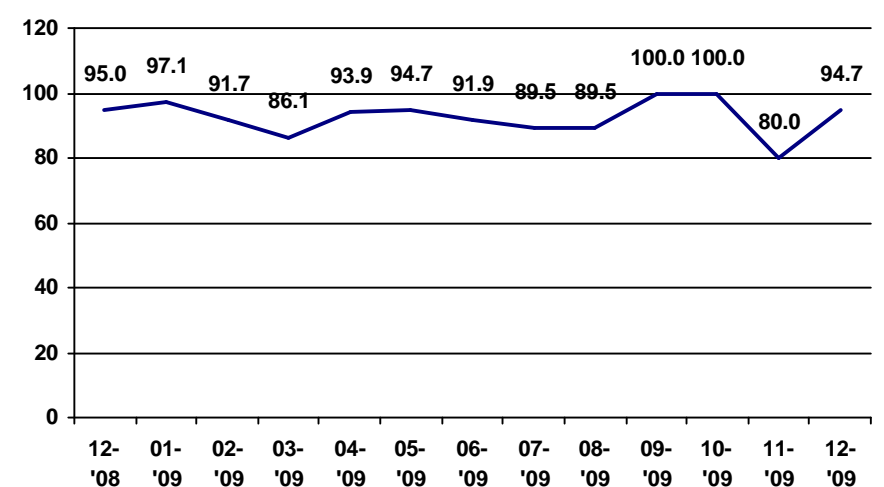
## Statewide Permanency within 24 Months



## Region 17 For December 2008 to December 2009

Location	Closed Cases Types with Permanency Outcomes					Permanency		
	Reunification	Adoption	Relative	Guardianship	Emanicipation	Total	Within 24 Months	24 Month Rate
Dec 2009	31	2	3	0	2	38	36	94.7
Nov 2009	2	1	1	1	0	5	4	80.0
Oct 2009	25	0	0	3	0	28	28	100.0
Sep 2009	5	0	0	0	0	5	5	100.0
Aug 2009	16	1	0	2	0	19	17	89.5
Jul 2009	16	1	0	2	0	19	17	89.5
Jun 2009	35	0	0	1	1	37	34	91.9
May 2009	17	1	0	0	1	19	18	94.7
Apr 2009	29	2	0	0	2	33	31	93.9
Mar 2009	31	5	0	0	0	36	31	86.1
Feb 2009	34	1	0	0	1	36	33	91.7
Jan 2009	33	0	0	0	1	34	33	97.1
Dec 2008	19	0	0	0	1	20	19	95.0

## Region 17 Permanency within 24 Months





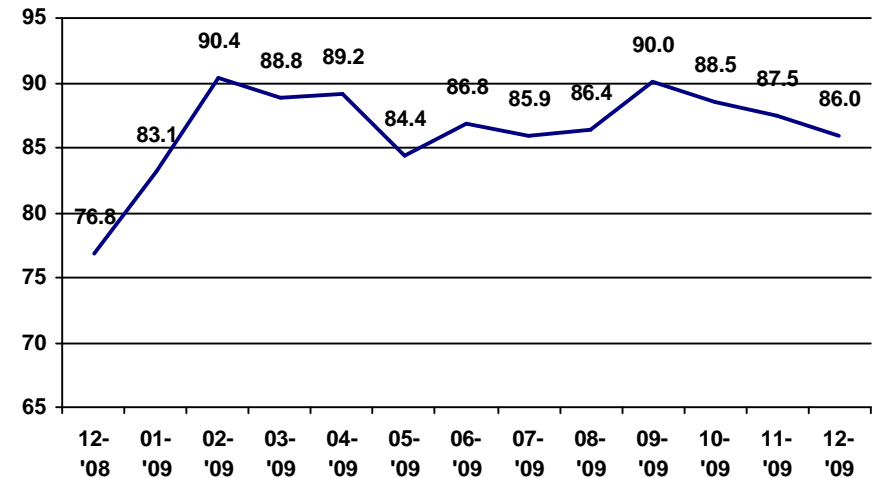
# DCS Practice Indicator Report CHINS and IA Permanency Report

For December 2009

## December 2009

Location	Closed Cases Types with Permanency Outcomes					Permanency		
	Reunification	Adoption	Relative	Guardianship	Emanicipation	Total	Within 24 Months	24 Month Rate
Statewide	726	96	33	74	25	954	820	86.0
Region 18	25	1	1	9	0	36	33	91.7
Clark	10	1	1	3	0	15	12	80.0
Floyd	4	0	0	0	0	4	4	100.0
Harrison	4	0	0	2	0	6	6	100.0
Scott	1	0	0	4	0	5	5	100.0
Washington	6	0	0	0	0	6	6	100.0

## Statewide Permanency within 24 Months



## Region 18 For December 2008 to December 2009

Location	Closed Cases Types with Permanency Outcomes					Permanency		
	Reunification	Adoption	Relative	Guardianship	Emanicipation	Total	Within 24 Months	24 Month Rate
Dec 2009	25	1	1	9	0	36	33	91.7
Nov 2009	22	11	0	3	2	38	28	73.7
Oct 2009	70	5	2	4	0	81	75	92.6
Sep 2009	38	0	2	4	1	45	42	93.3
Aug 2009	34	1	0	2	4	41	38	92.7
Jul 2009	34	1	0	3	4	42	39	92.9
Jun 2009	25	0	1	3	3	32	28	87.5
May 2009	19	0	0	3	2	24	21	87.5
Apr 2009	30	2	0	2	2	36	29	80.6
Mar 2009	28	0	1	4	0	33	31	93.9
Feb 2009	50	1	0	3	2	56	52	92.9
Jan 2009	45	4	0	7	2	58	53	91.4
Dec 2008	36	6	0	6	2	50	41	82.0

## Region 18 Permanency within 24 Months

