

**State of Indiana
General Fund and Property Tax Replacement Fund
Revenue History by Month
For Fiscal Years 2000 - 2004
Including
2004 Revenue Targets
(Cash Basis)**

Cash Balances

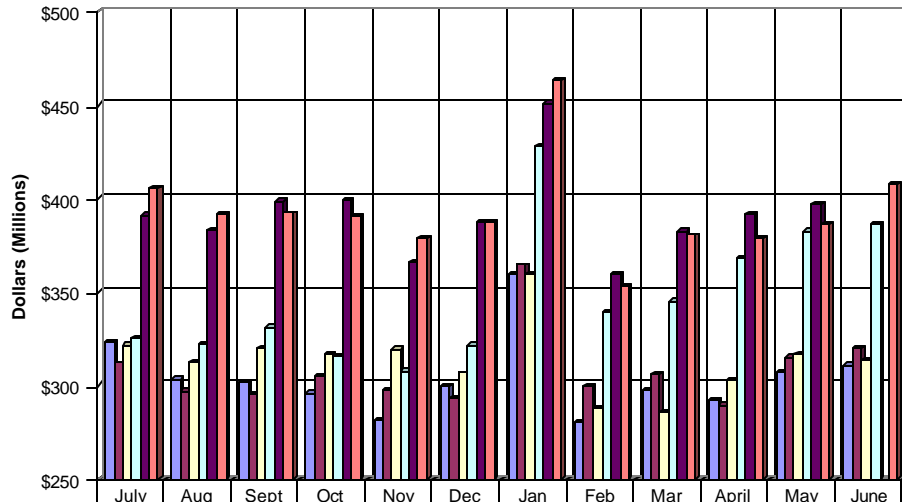
1997—2004 Surplus History

**Connie K. Nass
Auditor of State of Indiana**



May 31, 2004

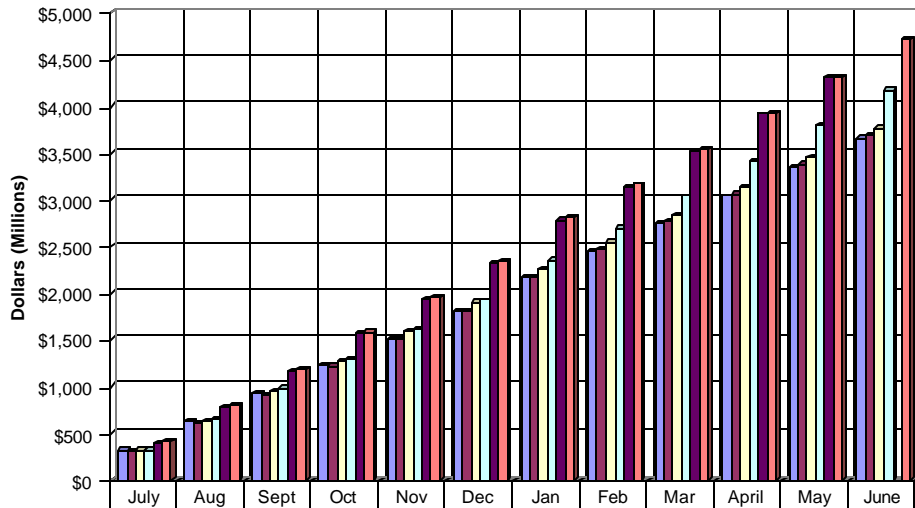
Monthly Sales Tax Revenue



	July	Aug	Sept	Oct	Nov	Dec	Jan	Feb	Mar	April	May	June
FY 2000	322.9	303.2	302.0	296.1	281.7	299.3	359.3	280.4	297.2	292.1	306.8	310.4
FY 2001	311.8	296.9	295.2	305.0	297.1	293.2	364.5	299.6	306.0	289.5	315.0	320.1
FY 2002	321.4	311.9	319.8	316.3	319.4	306.6	359.7	288.1	285.5	302.8	316.5	313.4
FY 2003	325.2	322.5	331.2	315.9	307.9	321.8	428.1	338.8	344.8	368.1	382.5	385.8
FY 2004	391.2	383.1	398.5	398.7	365.8	387.5	451.3	359.6	382.2	391.7	396.5	
FY 2004 Target	405.6	392.0	392.3	390.4	379.1	387.5	463.5	353.0	380.4	378.5	386.3	407.5

Legend: FY 2000 (light blue), FY 2001 (dark blue), FY 2002 (light green), FY 2003 (dark green), FY 2004 (purple), FY 2004 Target (red)

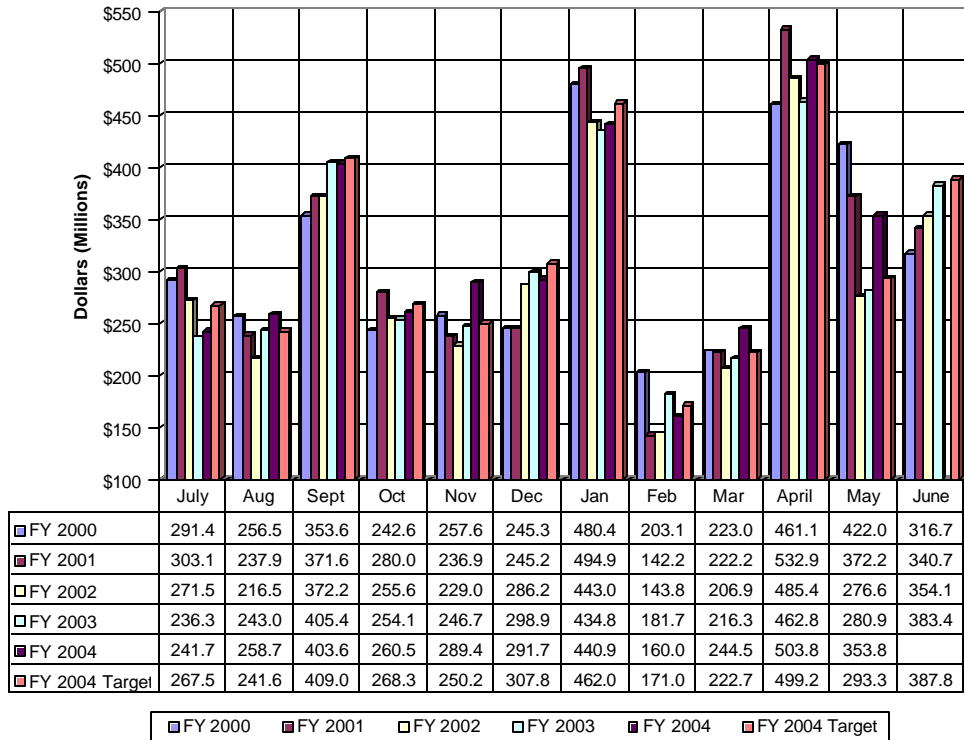
Year-to-Date Sales Tax Revenue



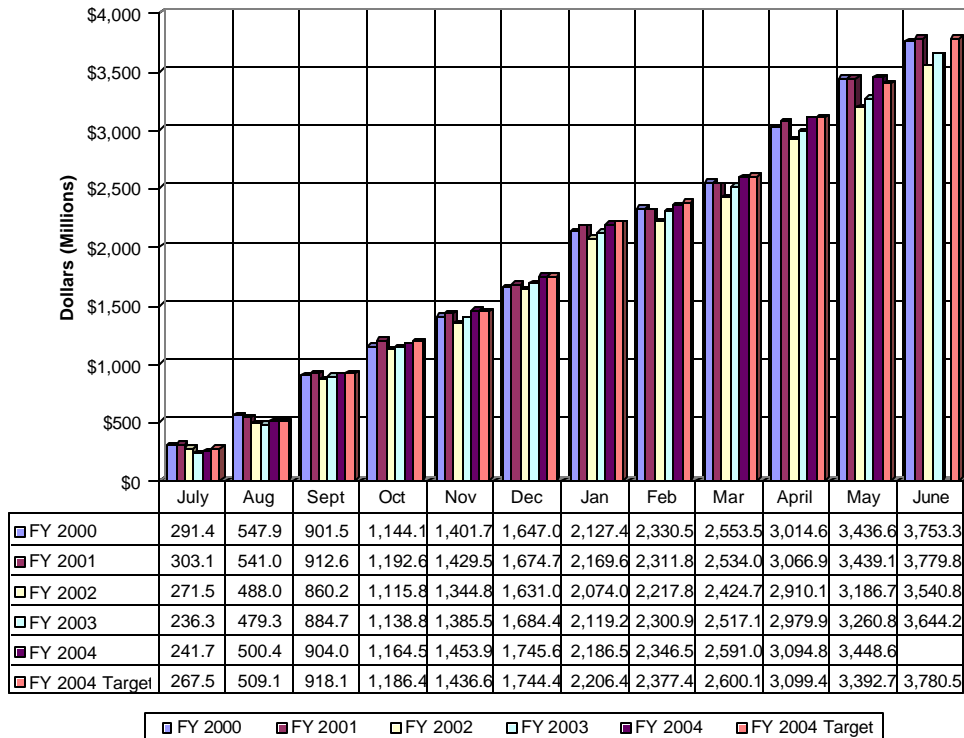
	July	Aug	Sept	Oct	Nov	Dec	Jan	Feb	Mar	April	May	June
FY 2000	322.9	626.1	928.1	1,224.2	1,505.9	1,805.2	2,164.5	2,444.9	2,742.1	3,034.2	3,341.0	3,651.4
FY 2001	311.8	608.7	903.9	1,208.9	1,506.0	1,799.2	2,163.7	2,463.3	2,769.3	3,058.8	3,373.8	3,693.9
FY 2002	321.4	633.3	953.1	1,269.4	1,588.8	1,895.4	2,255.1	2,543.2	2,828.7	3,131.5	3,448.0	3,761.4
FY 2003	325.2	647.6	978.8	1,294.7	1,602.6	1,924.4	2,352.5	2,691.3	3,036.0	3,404.1	3,786.6	4,172.4
FY 2004	391.2	774.3	1,172.8	1,571.5	1,937.3	2,324.8	2,776.1	3,135.7	3,517.9	3,909.6	4,306.1	
FY 2004 Target	405.6	797.6	1,189.9	1,580.3	1,959.4	2,346.9	2,810.5	3,163.5	3,543.9	3,922.3	4,308.6	4,716.1

Legend: FY 2000 (light blue), FY 2001 (dark blue), FY 2002 (light green), FY 2003 (dark green), FY 2004 (purple), FY 2004 Target (red)

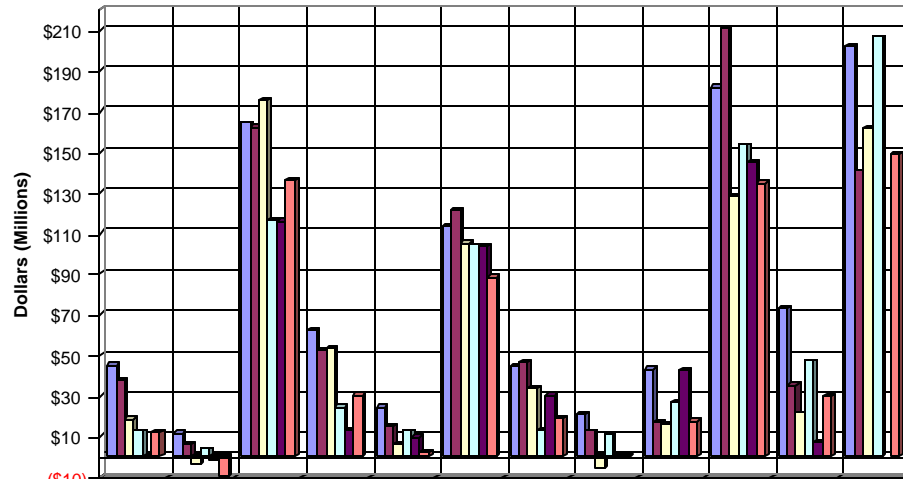
Monthly Individual Income Tax Revenue



Year-to-Date Individual Income Tax Revenue



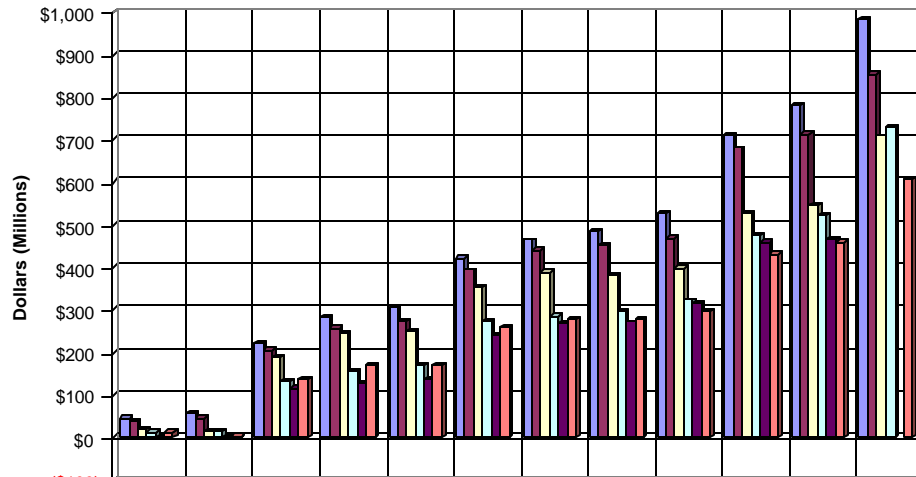
Monthly Corporate Income Tax Revenue



	July	Aug	Sept	Oct	Nov	Dec	Jan	Feb	Mar	April	May	June
FY 2000	45.2	11.4	163.8	62.2	24.3	113.2	44.4	20.9	43.3	181.6	73.1	201.9
FY 2001	37.8	5.8	162.0	52.1	14.6	121.2	46.4	12.4	16.9	210.7	35.1	140.3
FY 2002	18.0	(3.6)	175.4	53.4	6.3	104.8	33.7	(5.9)	16.4	127.9	21.2	161.8
FY 2003	12.5	3.7	116.1	24.1	12.4	104.0	13.0	10.5	26.7	153.2	46.7	206.2
FY 2004	(0.1)	(1.5)	115.8	13.1	9.3	103.4	30.1	1.5	42.3	144.9	6.9	
FY 2004 Target	12.1	(9.6)	136.1	30.3	2.1	88.4	18.6	(0.4)	17.4	134.7	30.0	148.6

■ FY 2000
 ■ FY 2001
 ■ FY 2002
 ■ FY 2003
 ■ FY 2004
 ■ FY 2004 Target

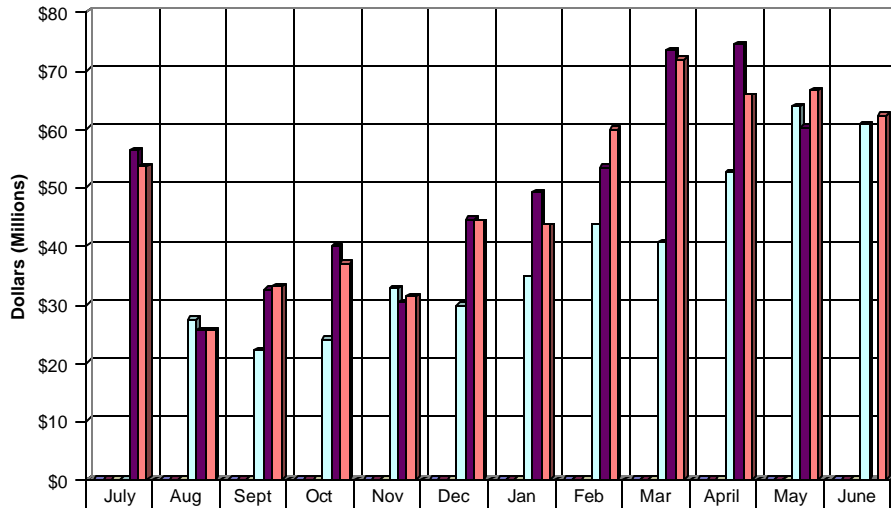
Year-to-Date Corporate Income Tax Revenue



	July	Aug	Sept	Oct	Nov	Dec	Jan	Feb	Mar	April	May	June
FY 2000	45.2	56.6	220.4	282.6	306.9	420.1	464.5	485.4	528.7	710.3	783.4	985.3
FY 2001	37.8	43.6	205.6	257.7	272.3	393.5	439.9	452.3	469.2	679.9	715.0	855.3
FY 2002	18.0	14.4	189.8	243.2	249.5	354.3	388.0	382.1	398.5	526.4	547.6	709.4
FY 2003	12.5	16.2	132.3	156.4	168.8	272.8	285.8	296.4	323.1	476.3	523.0	729.2
FY 2004	(0.1)	(1.6)	114.2	127.3	136.6	240.0	270.1	271.6	313.9	458.8	465.7	
FY 2004 Target	12.1	2.5	138.6	168.9	171.0	259.4	277.9	277.5	294.9	429.7	459.7	608.3

■ FY 2000
 ■ FY 2001
 ■ FY 2002
 ■ FY 2003
 ■ FY 2004
 ■ FY 2004 Target

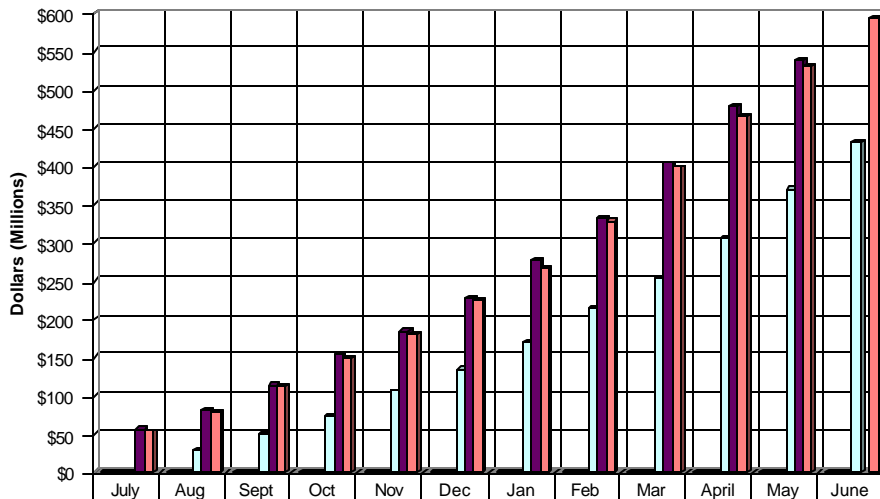
Monthly Riverboat Wagering Tax



FY 2000	-	-	-	-	-	-	-	-	-	-	-	-
FY 2001	-	-	-	-	-	-	-	-	-	-	-	-
FY 2002	-	-	-	-	-	-	-	-	-	-	-	-
FY 2003	-	27.3	22.1	23.9	32.6	29.7	34.5	43.4	40.4	52.5	63.8	60.6
FY 2004	56.1	25.4	32.5	39.9	30.3	44.4	49.1	53.3	73.5	74.4	60.1	
FY 2004 Target	53.5	25.4	33.0	36.9	31.4	44.1	43.4	59.9	71.9	65.6	66.6	62.2

■ FY 2000
 ■ FY 2001
 ■ FY 2002
 ■ FY 2003
 ■ FY 2004
 ■ FY 2004 Target

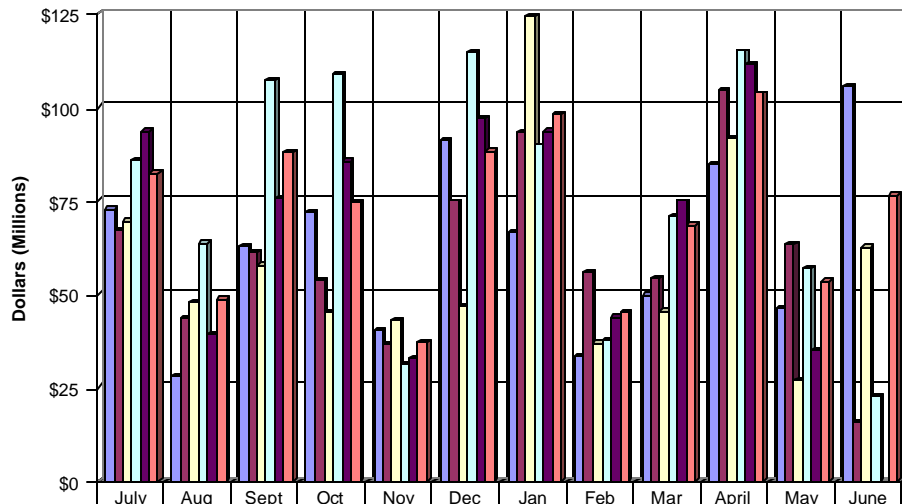
Year-to-Date Riverboat Wagering Tax



FY 2000	-	-	-	-	-	-	-	-	-	-	-	-
FY 2001	-	-	-	-	-	-	-	-	-	-	-	-
FY 2002	-	-	-	-	-	-	-	-	-	-	-	-
FY 2003	-	27.3	49.4	73.3	105.9	135.5	170.1	213.4	253.8	306.3	370.1	430.7
FY 2004	56.1	81.5	114.0	153.9	184.2	228.6	277.7	331.0	404.5	478.9	539.0	
FY 2004 Target	53.5	78.9	111.9	148.8	180.2	224.3	267.6	327.5	399.4	465.1	531.7	593.9

■ FY 2000
 ■ FY 2001
 ■ FY 2002
 ■ FY 2003
 ■ FY 2004
 ■ FY 2004 Target

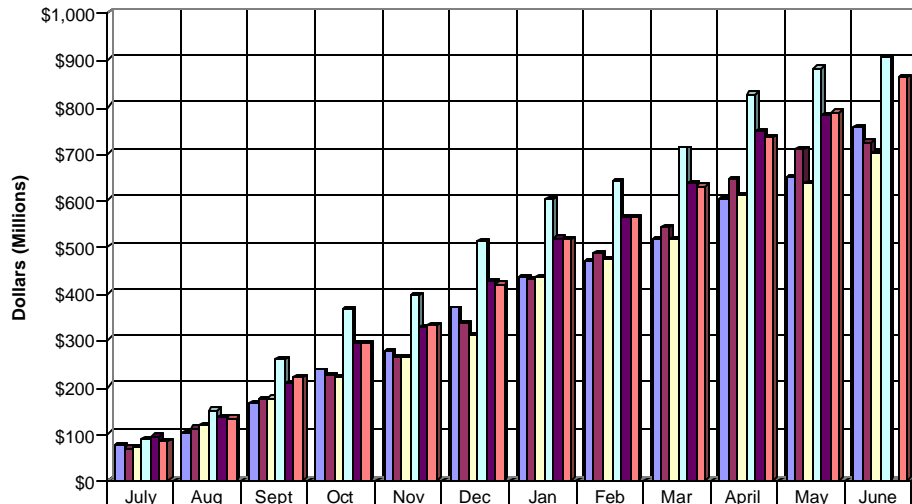
Monthly Other Revenue



	July	Aug	Sept	Oct	Nov	Dec	Jan	Feb	Mar	April	May	June
FY 2000	72.7	27.9	62.7	71.9	40.3	91.2	66.6	33.4	49.6	84.8	46.0	105.6
FY 2001	66.9	43.7	61.2	53.6	36.6	74.7	93.1	55.7	54.1	104.6	63.2	15.5
FY 2002	69.5	47.7	57.8	44.9	42.9	46.9	124.1	36.8	45.3	91.8	26.9	62.6
FY 2003	85.9	63.5	107.1	108.8	31.0	114.9	89.7	37.7	70.7	115.0	56.8	22.6
FY 2004	93.5	39.1	75.5	85.5	32.8	96.9	93.5	43.8	74.8	111.3	35.1	
FY 2004 Target	82.2	48.5	87.8	74.4	37.1	88.0	97.9	45.0	68.4	103.6	53.4	76.4

■ FY 2000
 ■ FY 2001
 ■ FY 2002
 ■ FY 2003
 ■ FY 2004
 ■ FY 2004 Target

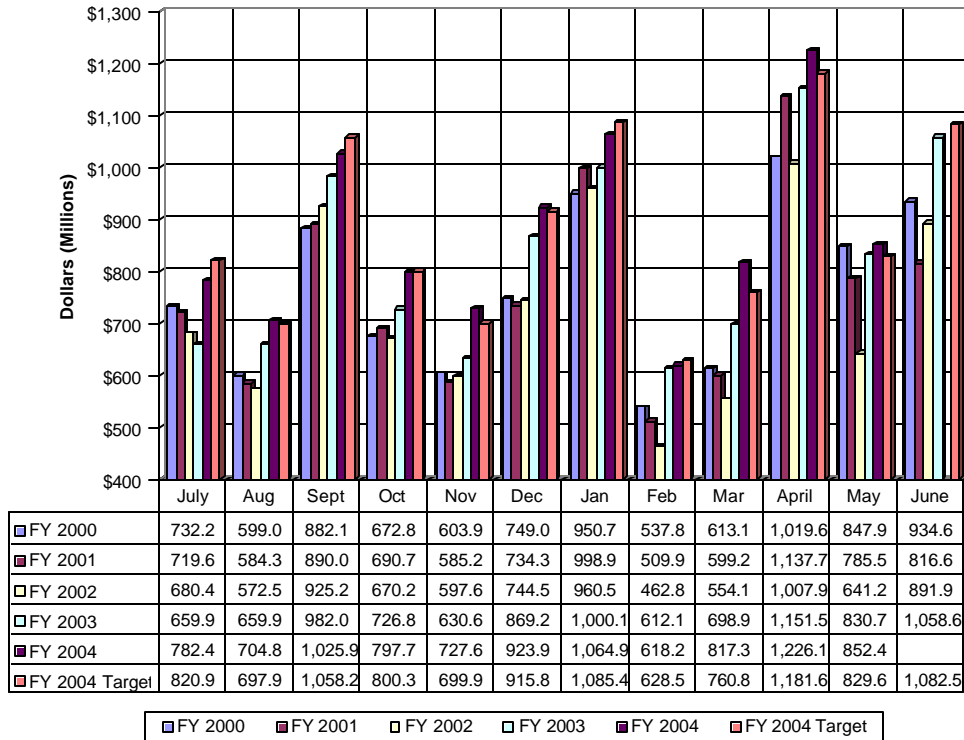
Year-to-Date Other Revenue



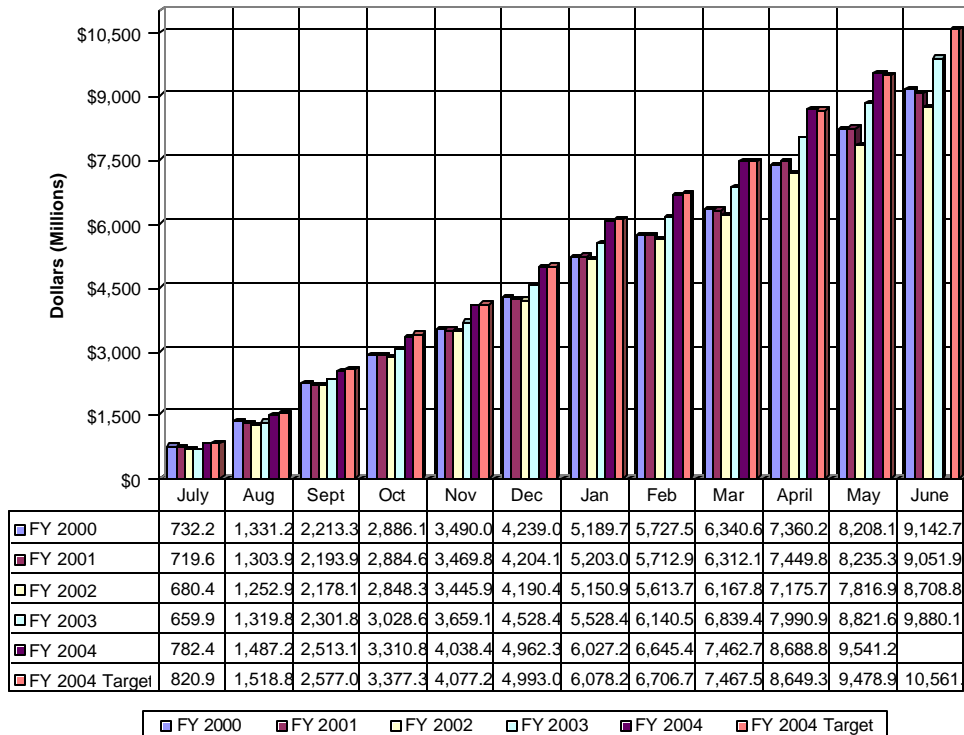
	July	Aug	Sept	Oct	Nov	Dec	Jan	Feb	Mar	April	May	June
FY 2000	72.7	100.6	163.3	235.2	275.5	366.7	433.3	466.7	516.3	601.1	647.1	752.7
FY 2001	66.9	110.6	171.8	225.4	262.0	336.7	429.8	485.5	539.6	644.2	707.4	722.9
FY 2002	69.5	117.2	175.0	219.9	262.8	309.7	433.8	470.6	515.9	607.7	634.6	697.2
FY 2003	85.9	149.4	256.5	365.4	396.5	511.2	600.9	638.6	709.3	824.3	881.1	903.6
FY 2004	93.5	132.6	208.1	293.6	326.4	423.3	516.8	560.6	635.8	746.7	781.8	
FY 2004 Target	82.2	130.7	218.5	292.9	330.0	418.0	515.9	560.9	629.3	732.9	786.3	862.7

■ FY 2000
 ■ FY 2001
 ■ FY 2002
 ■ FY 2003
 ■ FY 2004
 ■ FY 2004 Target

Monthly Total Revenue



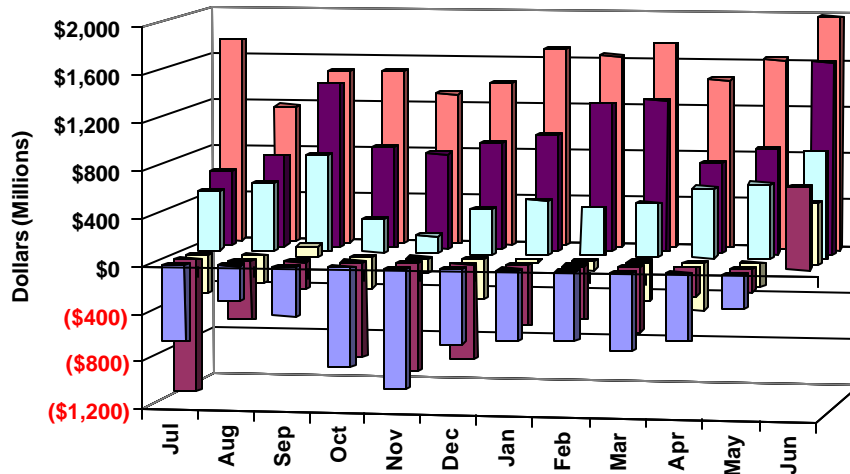
Year-to-Date Total Revenue



State of Indiana Cash Balances as of May 31, 2004 (All Funds)

	Surplus Accounts	Non- Surplus Accounts	Total
General Fund Cash and Investments	\$(1,789,420,513)	\$ 555,927,945	\$(1,233,492,567)
Rainy Day Fund	257,142,899		257,142,899
Total General Fund Cash and Investments	<u>(1,532,277,613)</u>	<u>555,927,945</u>	<u>(976,349,668)</u>
Non General Fund Cash and Investments		2,430,957,176	2,430,957,176
Property Tax Replacement Fund	1,250,265,930		1,250,265,930
Total Non General Fund Cash and Investments	<u>1,250,265,930</u>	<u>2,430,957,176</u>	<u>3,681,223,106</u>
Grand Total All Funds Cash and Investments	<u>\$ (282,011,683)</u>	<u>\$ 2,986,885,122</u>	<u>\$ 2,704,873,438</u>

General Fund and Property Tax Replacement Fund Surplus



	Jul	Aug	Sep	Oct	Nov	Dec	Jan	Feb	Mar	Apr	May	Jun
■ FY 2004	(647.5)	(290.3)	(416.4)	(831.7)	(1,007.1)	(622.2)	(587.1)	(574.8)	(655.6)	(569.9)	(288.4)	
■ FY 2003	(1,110.1)	(503.4)	(230.0)	(791.1)	(906.0)	(800.6)	(504.7)	(451.5)	(542.0)	(234.5)	(189.1)	689.7
□ FY 2002	(327.1)	(236.2)	91.7	(260.8)	(117.6)	(327.8)	(15.5)	(73.6)	(326.9)	(394.2)	(197.0)	522.0
□ FY 2001	509.1	578.0	825.9	288.0	150.6	384.0	467.2	406.5	453.6	587.6	631.7	908.7
■ FY 2000	634.3	770.8	1,401.7	866.4	811.9	919.3	983.2	1,254.0	1,293.4	765.5	894.1	1,637.4
■ FY 1999	1,735.7	1,166.0	1,477.2	1,478.8	1,294.0	1,402.8	1,693.0	1,640.5	1,746.5	1,440.7	1,622.6	1,990.8