

CONSERVATION RESERVE ENHANCEMENT PROGRAM REPORT

June 2, 2009

<u>Watersheds</u>	<u>Contracts</u>	<u>Acres</u>	<u>Acres/Contract</u>	<u>Average Dollars/Acre</u>	<u>Obligated State Funds</u>	<u>Estimated Federal Leverage</u>
Tippecanoe River	419	3086.9	7.4	\$174.14	\$537,565.00	\$9,001,400.40
Upper White River	215	1429.2	6.6	\$429.17	\$613,365.00	\$4,167,547.20
Pigeon/Highland Rivers	120	430.86	3.6	\$215.02	\$92,644.00	\$1,256,387.76
TOTAL	754	4946.96	6.6	\$251.38	\$1,243,574.00	\$14,425,335.36

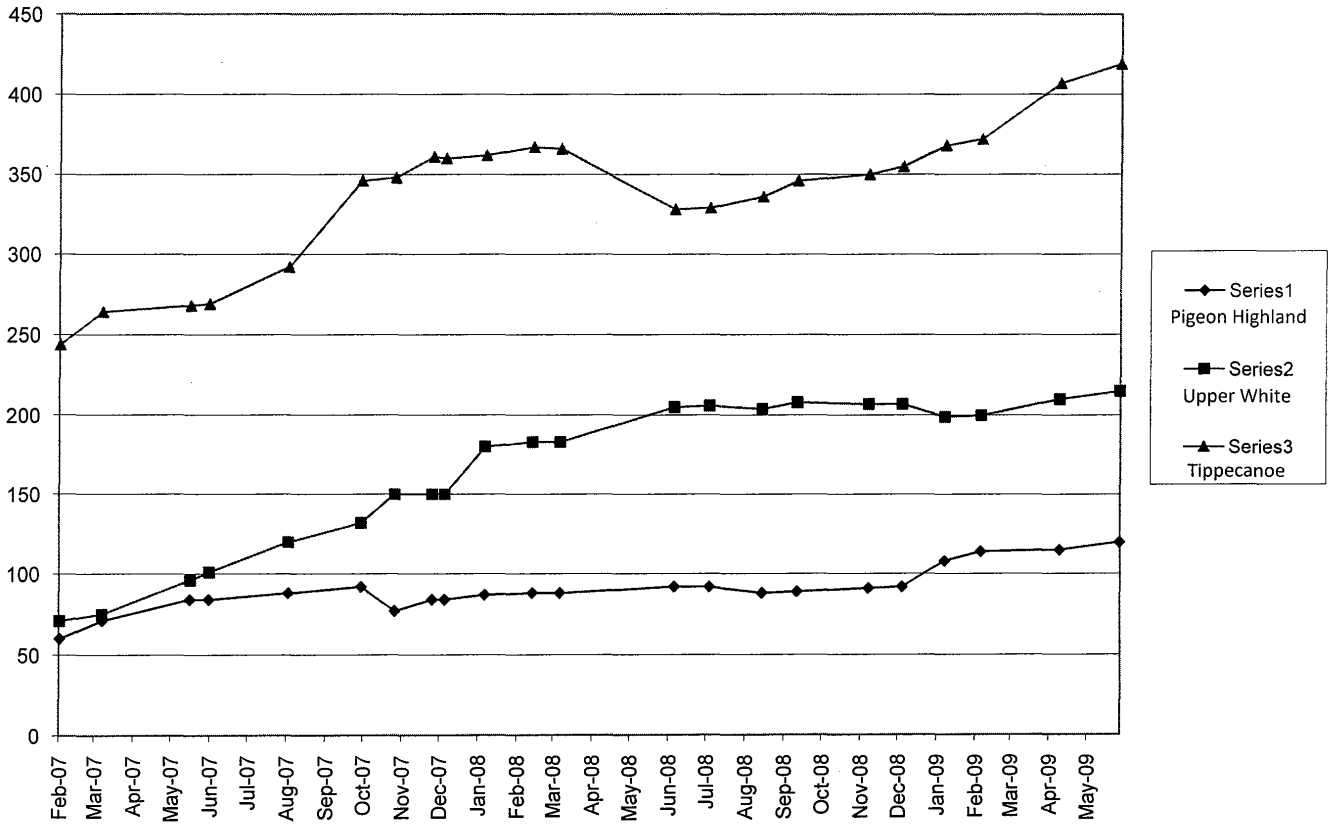
April 14, 2009

<u>Watersheds</u>	<u>Contracts</u>	<u>Acres</u>	<u>Acres/Contract</u>	<u>Average Dollars/Acre</u>	<u>Obligated State Funds</u>	<u>Estimated Federal Leverage</u>
Tippecanoe River	407	2880.7	7.1	\$166.31	\$479,095.00	\$8,400,121.20
Upper White River	210	1416.7	6.7	\$409.46	\$580,080.00	\$4,131,097.20
Pigeon/Highland Rivers	115	418.46	3.6	\$216.59	\$90,634.00	\$1,220,229.36
TOTAL	732	4715.86	6.4	\$243.82	\$1,149,809.00	\$13,751,447.76

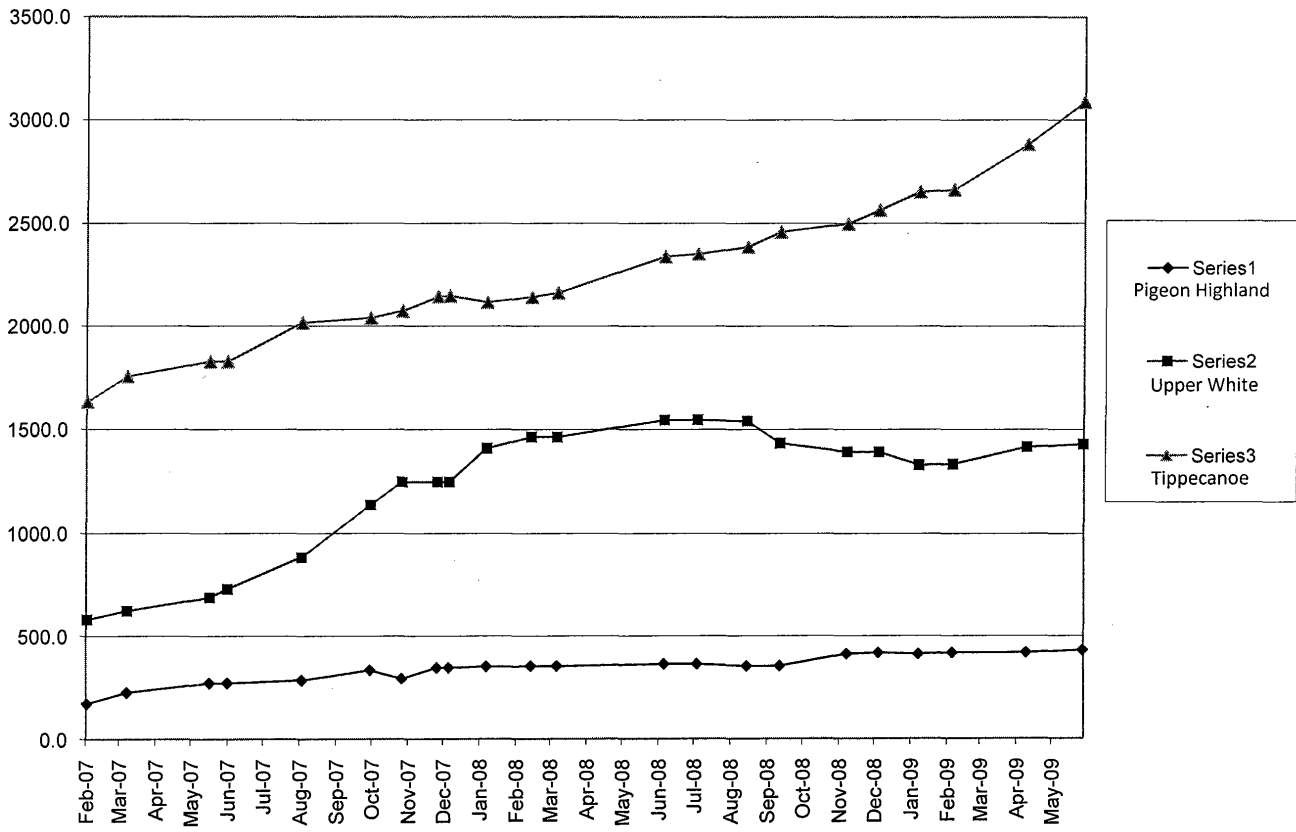
CREP Obligated vs. Paid Funds

<u>Watersheds</u>	<u>Obligated</u>	<u>Paid</u>	<u>Difference</u>
Tippecanoe River	\$537,565.00	\$300,150.00	\$237,415.00
Upper White River	\$613,365.00	\$398,600.00	\$214,765.00
Pigeon Highland Rivers	\$92,644.00	\$36,697.00	\$55,947.00
Total	\$1,243,574.00	\$735,447.00	\$508,127.00

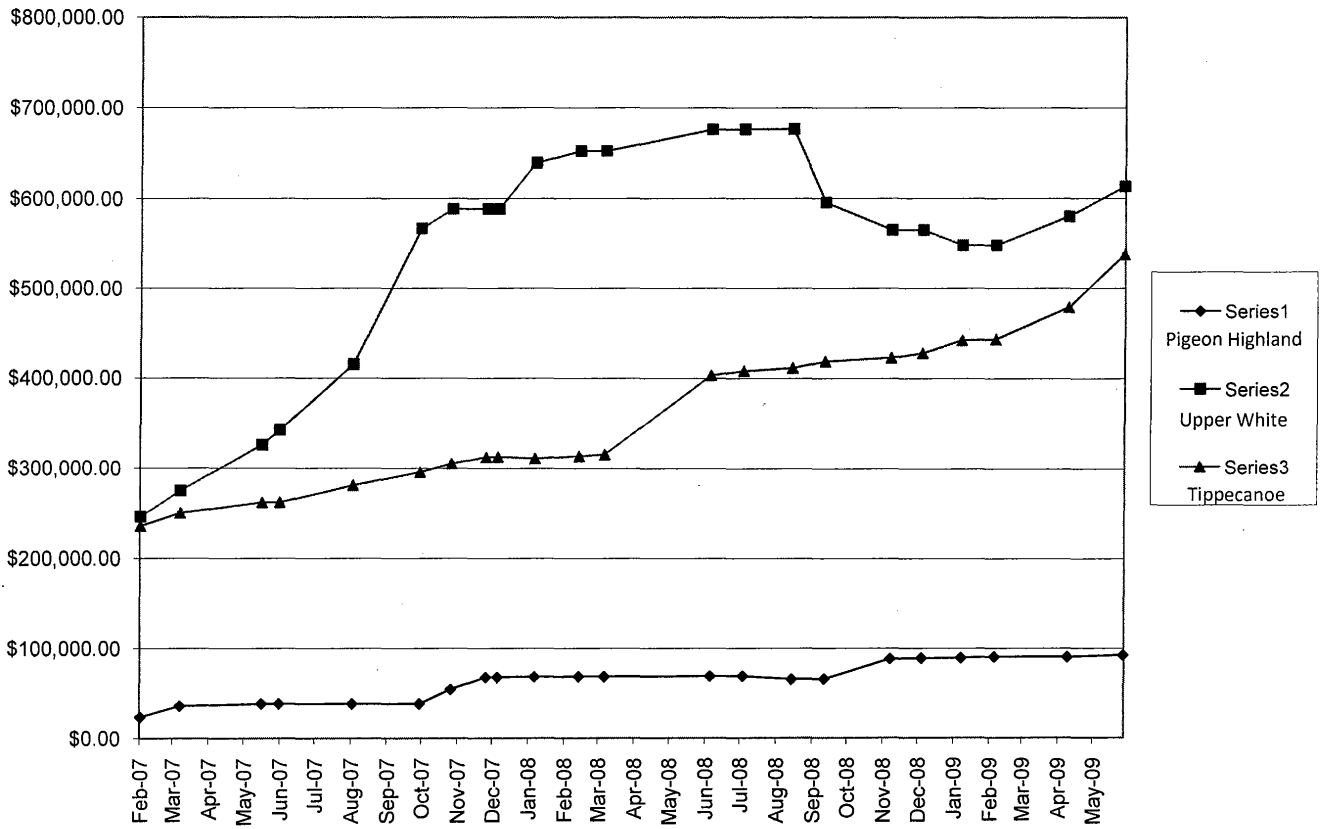
CREP Landowner Contracts February 2007 - June 2009



CREP Obligated Acres February 2007 - June 2009



CREP Obligated Funds February 2007 - June 2009



Tippecanoe Watershed - Practices by County

Practice/Type	Benton	Carroll	Cass	Fulton	Jasper	Kosciusko
CP 21 Contracts	1		2	82	19	16
CP 21 Acres	2.6		4	407	74.2	61.9
CP 21 Funds	\$260.00	\$0.00	\$400.00	\$40,700.00	\$7,420.00	\$6,190.00
CP 22 Contracts	0	0	0	1	0	0
CP 22 Acres	0	0	0	0.6	0	0
CP 22 Funds	\$0.00	\$0.00	\$0.00	\$240.00	\$0.00	\$0.00
CP 23 Contracts	0	0	0	0	0	1
CP 23 Acres	0	0	0	0	0	121.7
CP 23 Funds	\$0.00	\$0.00	\$0.00	\$0.00	\$0.00	\$79,105.00
CP 23A Contracts	0	0	3	8	1	3
CP 23A Acres	0	0	43	50.3	33.7	30.4
CP 23A Funds	\$0.00	\$0.00	\$17,200.00	\$20,120.00	\$13,480.00	\$12,160.00
CP 31 Contracts	0	1	0	0	0	0
CP 31 Acres	0	5.6	0	0	0	0
CP 31 Funds	\$0.00	\$2,240.00	\$0.00	\$0.00	\$0.00	\$0.00
Total Contracts	1	1	5	91	20	20
Total Acres	2.6	5.6	47	457.9	107.9	214
Total Funds	\$260.00	\$2,240.00	\$17,600.00	\$61,060.00	\$20,900.00	\$97,455.00

Extensions and Easements

County	Type	Practice	Total Contracts	Total Acres	Status
Kosciusko	Extension	CP 23	1	121.7	Open
Pulaski	Extension	CP 31	1	14.8	Paid

Tippecanoe Watershed - Practices by County

Practice/Type	Marshall	Noble	Pulaski	Starke	White	Whitley	Total
CP 21 Contracts	4	2	156	34	63	5	384
CP 21 Acres	44.8	7.7	1219	305.3	283.9	15	2425.4
CP 21 Funds	\$4,480.00	\$770.00	\$121,900.00	\$30,530.00	\$28,390.00	\$1,500.00	\$242,540.00
CP 22 Contracts	0	0	1	0	1	0	3
CP 22 Acres	0	0	7.2	0	4.7	0	12.5
CP 22 Funds	\$0.00	\$0.00	\$2,880.00	\$0.00	\$1,880.00	\$0.00	\$5,000.00
CP 23 Contracts	0	0	0	0	0	0	1
CP 23 Acres	0	0	0	0	0	0	121.7
CP 23 Funds	\$0.00	\$0.00	\$0.00	\$0.00	\$0.00	\$0.00	\$79,105.00
CP 23A Contracts	0	0	7	3	3	1	29
CP 23A Acres	0	0	224	62.6	62.4	0.5	506.9
CP 23A Funds	\$0.00	\$0.00	\$89,600.00	\$25,040.00	\$24,960.00	\$200.00	\$202,760.00
CP 31 Contracts	0	0	1	0	0	0	2
CP 31 Acres	0	0	14.8	0	0	0	20.4
CP 31 Funds	\$0.00	\$0.00	\$5,920.00	\$0.00	\$0.00	\$0.00	\$8,160.00
Total Contracts	4	2	165	37	67	6	419
Total Acres	44.8	7.7	1465	367.9	351	15.5	3086.9
Total Funds	\$4,480.00	\$770.00	\$220,300.00	\$55,570.00	\$55,230.00	\$1,700.00	\$537,565.00

Tippecanoe Watershed

Total Acres by County and Practice

County	Practice	Active Acres	Paid Acres	Total CREP Acres
Benton	CP 21	0.0	2.6	2.6
Cass	CP21	0.0	4.0	4.0
Fulton	CP 21	142.9	264.1	407.0
Jasper	CP 21	4.1	70.1	74.2
Kosciusko	CP 21	12.6	49.3	61.9
Marshall	CP 21	15.7	29.1	44.8
Noble	CP 21	0.0	7.7	7.7
Pulaski	CP 21	220.0	999.0	1219.0
Starke	CP 21	137.2	168.1	305.3
White	CP 21	121.5	162.4	283.9
Whitley	CP 21	0.0	15.0	15.0
Fulton	CP 22	0.6	0.0	0.6
Pulaski	CP 22	0.0	7.2	7.2
White	CP 22	4.7	0.0	4.7
Kosciusko	CP 23	121.7	0.0	121.7
Cass	CP 23A	0.0	43.0	43.0
Fulton	CP 23A	41.1	9.2	50.3
Jasper	CP 23A	0.0	33.7	33.7
Kosciusko	CP 23A	26.0	4.4	30.4
Pulaski	CP 23A	122.6	101.4	224.0
Starke	CP 23A	36.5	26.1	62.6
White	CP 23A	0.0	62.4	62.4
Whitley	CP 23A	0.0	0.5	0.5
Carroll	CP 31	5.6	0.0	5.6
Pulaski	CP 31	0.0	14.8	14.8
TOTAL		1012.8	2059.3	3086.9

County	Active Acres	Paid Acres	Total County Acres
Benton	0.0	2.6	2.6
Carroll	5.6	0.0	5.6
Cass	0.0	47.0	47.0
Fulton	184.6	273.3	457.9
Jasper	4.1	103.8	107.9
Kosciusko	160.3	53.7	214.0
Marshall	15.7	29.1	44.8
Noble	0.0	7.7	7.7
Pulaski	342.6	1122.4	1465.0
Starke	173.7	194.2	367.9
White	126.2	224.8	351.0
Whitley	0.0	15.5	15.5
Total	1012.8	2074.1	3086.9

Upper White River Watershed - Practices by County

Practice/Type	Boone	Delaware	Hamilton	Hendricks	Henry	Madison
CP 2 Contracts	0	0	0	0	0	0
CP 2 Acres	0.0	0.0	0.0	0.0	0.0	0.0
CP 2 Funds	\$0.00	\$0.00	\$0.00	\$0.00	\$0.00	\$0.00
CP 21 Contracts	2	28	16	7	0	18
CP 21 Acres	4.9	105.9	53.7	21.4	0.0	54.0
CP 21 Funds	\$490.00	\$10,590.00	\$5,370.00	\$2,140.00	\$0.00	\$5,400.00
CP 22 Contracts	0	3	3	1	1	6
CP 22 Acres	0.0	24.2	7.7	4.5	3.9	43.1
CP 22 Funds	\$0.00	\$9,680.00	\$4,730.00	\$1,800.00	\$1,560.00	\$27,215.00
CP 23A Contracts	0	1	4	0	0	0
CP 23A Acres	0.0	10.0	49.7	0.0	0.0	0.0
CP 23A Funds	\$0.00	\$4,000.00	\$32,305.00	\$0.00	\$0.00	\$0.00
CP 31 Contracts	1	10	7	2	2	28
CP 31 Acres	2.9	132.2	97.6	21.2	7.2	457.1
CP 31 Funds	\$1,160.00	\$52,880.00	\$53,290.00	\$8,480.00	\$2,880.00	\$305,740.00
CP 3A Contracts	0	0	0	0	0	0
CP 3A Acres	0.0	0.0	0.0	0.0	0.0	0.0
CP 3A Funds	\$0.00	\$0.00	\$0.00	\$0.00	\$0.00	\$0.00
Total Contracts	3	42	30	10	3	52
Total Acres	7.8	272.3	208.7	47.1	11.1	554.2
Total Funds	\$1,650.00	\$77,150.00	\$95,695.00	\$12,420.00	\$4,440.00	\$338,355.00

Extensions and Easements

County	Type	Practice	Total Contracts	Total Acres	Status
Hamilton	Extension	CP 22	2	6.6	Open
Hamilton	Extension	CP 23	4	49.7	Open
Hamilton	Extension	CP 31	3	57.7	Open
Hamilton	Extension	CP 31	1	3.5	Paid
Madison	Extension	CP 22	1	4.7	Open
Madison	Extension	CP 22	4	35.2	Paid
Madison	Extension	CP 31	3	26.6	Open
Madison	Extension	CP 31	15	322.6	Paid
Tipton	Extension	CP 31	1	8.5	Paid
Madison	Easement	CP 31	5	71.2	Open

Upper White River Watershed - Practices by County

Practice/Type	Marion	Randolph	Tipton	Total
CP 2 Contracts	0	0	1	1
CP 2 Acres	0.0	0.0	1.6	1.6
CP 2 Funds	\$0.00	\$0.00	\$160.00	\$160.00
CP 21 Contracts	0	17	38	126
CP 21 Acres	0.0	77.9	86.9	404.7
CP 21 Funds	\$0.00	\$7,790.00	\$8,690.00	\$40,470.00
CP 22 Contracts	0	6	0	20
CP 22 Acres	0.0	24.2	0.0	107.6
CP 22 Funds	\$0.00	\$10,440.00	\$0.00	\$55,425.00
CP 23A Contracts	0	0	0	5
CP 23A Acres	0.0	0.0	0.0	59.7
CP 23A Funds	\$0.00	\$0.00	\$0.00	\$36,305.00
CP 31 Contracts	1	10	1	62
CP 31 Acres	18.1	109.8	8.5	854.6
CP 31 Funds	\$7,240.00	\$43,160.00	\$5,525.00	\$480,355.00
CP 3A Contracts	0	0	1	1
CP 3A Acres	0.0	0.0	1.0	1.0
CP 3A Funds	\$0.00	\$0.00	\$650.00	\$650.00
Total Contracts	1	33	41	215
Total Acres	18.1	211.9	98.0	1429.2
Total Funds	\$7,240.00	\$61,390.00	\$15,025.00	\$613,365.00

Upper White River Watershed
Total Acres by County and Practice

County	Practice	Active Acres	Paid Acres	Total CREP Acres
Tipton	CP 2	1.6	0.0	1.6
Boone	CP 21	4.9	0.0	4.9
Delaware	CP 21	44.7	61.2	105.9
Hamilton	CP 21	8.8	44.9	53.7
Hendricks	CP 21	0.0	21.4	21.4
Madison	CP 21	11.7	42.3	54.0
Randolph	CP 21	36.2	41.7	77.9
Tipton	CP 21	10.3	76.6	86.9
Delaware	CP 22	24.2	0.0	24.2
Hamilton	CP 22	6.6	1.1	7.7
Hendricks	CP 22	4.5	0.0	4.5
Henry	CP 22	0.0	3.9	3.9
Madison	CP 22	4.7	38.4	43.1
Randolph	CP 22	0.0	24.2	24.2
Delaware	CP 23A	10.0	0.0	10.0
Hamilton	CP 23A	49.7	0.0	49.7
Boone	CP 31	0.0	2.9	2.9
Delaware	CP 31	92.8	39.4	132.2
Hamilton	CP 31	57.7	39.9	97.6
Hendricks	CP 31	10.0	11.2	21.2
Henry	CP 31	0.0	7.2	7.2
Madison	CP 31	40.5	416.6	457.1
Marion	CP 31	18.1	0.0	18.1
Randolph	CP 31	38.2	71.6	109.8
Tipton	CP 31	0.0	8.5	8.5
Tipton	CP 3A	0.0	1.0	1.0
TOTAL		475.2	954.0	1429.2

County	Active Acres	Paid Acres	Total County Acres
Boone	4.9	2.9	7.8
Delaware	171.7	100.6	272.3
Hamilton	122.8	85.9	208.7
Hendricks	14.5	32.6	47.1
Henry	0.0	11.1	11.1
Madison	56.9	497.3	554.2
Marion	18.1	0.0	18.1
Randolph	74.4	137.5	211.9
Tipton	11.9	86.1	98.0
Total	475.2	954.0	1429.2

Pigeon Highland Watershed - Practices by County

Practice/Type	Gibson	Posey	Vanderburgh	Warrick	Total
CP 2 Contracts	0	0	1	0	1
CP 2 Acres	0.00	0.00	2.50	0.00	2.50
CP 2 Funds	\$0.00	\$0.00	\$250.00	\$0.00	\$250.00
CP 21 Contracts	24	9	33	22	88
CP 21 Acres	58.80	30.60	87.93	76.30	253.63
CP 21 Funds	\$5,880.00	\$3,060.00	\$8,793.00	\$7,630.00	\$25,363.00
CP 22 Contracts	1	0	7	0	8
CP 22 Acres	3.80	0.00	2.53	0.00	6.33
CP 22 Funds	\$1,520.00	\$0.00	\$1,164.00	\$0.00	\$2,684.00
CP 31 Contracts	0	1	3	1	5
CP 31 Acres	0.00	18.70	84.30	6.30	109.30
CP 31 Funds	\$0.00	\$7,480.00	\$33,680.00	\$2,520.00	\$43,680.00
CP 3A Contracts	0	0	9	1	10
CP 3A Acres	0.00	0.00	46.89	2.30	49.19
CP 3A Funds	\$0.00	\$0.00	\$18,756.00	\$920.00	\$19,676.00
Unknown Contracts	0	0	8	0	8
Unknown Acres	0.00	0.00	9.91	0.00	9.91
Unknown Funds	\$0.00	\$0.00	\$991.00	\$0.00	\$991.00
Total Contracts	25	10	61	24	120
Total Acres	62.60	49.30	234.06	84.90	430.86
Total Funds	\$7,400.00	\$10,540.00	\$63,634.00	\$11,070.00	\$92,644.00

Pigeon Highland Watershed
Total Acres by County and Practice

County	Practice	Active Acres	Paid Acres	Total CREP Acres
Vanderburgh	CP 2	0.00	2.50	2.50
Gibson	CP 21	14.10	44.70	58.80
Posey	CP 21	18.20	12.40	30.60
Vanderburgh	CP 21	45.38	42.55	87.93
Warrick	CP 21	48.60	27.70	76.30
Gibson	CP 22	3.80	0.00	3.80
Vanderburgh	CP 22	1.92	0.61	2.53
Posey	CP 31	0.00	18.70	18.70
Vanderburgh	CP 31	56.90	27.40	84.30
Warrick	CP 31	0.00	6.30	6.30
Vanderburgh	CP 3A	41.00	5.89	46.89
Warrick	CP 3A	2.30	0.00	2.30
Vanderburgh	Unknown	9.91	0.00	9.91
TOTAL		242.11	188.75	430.86

County	Active Acres	Paid Acres	Total County Acres
Gibson	17.90	44.70	62.60
Posey	18.20	31.10	49.30
Vanderburgh	155.11	78.95	234.06
Warrick	50.90	34.00	84.90
Total	242.11	188.75	430.86

Practice	Title	Purpose
CP-2	<i>Establishment of Permanent Native Grasses</i>	This practice is for the establishment of a permanent vegetative cover of native grasses. This area may be used for both managed and emergency haying and grazing as authorized.
CP-3A	<i>Hardwood Tree Planting</i>	The purpose of this practice is to establish a stand of predominately hardwood trees. Planting of certain softwood trees is acceptable to ensure survivability of hardwoods. This would enhance environmental benefits to less than the soil loss tolerance.
CP-4D	<i>Permanent Wildlife Habitat, Noneasement</i>	This practice establishes a permanent wildlife habitat cover to enhance benefits for wildlife of the designated and surrounding areas. A wildlife conservation plan is developed for acreage enrolled in this CP.
CP-21	<i>Grassed Filter Strips</i>	The purpose of this practice is to remove nutrients, sediment, organic matter, pesticides and other pollutants from surface runoff and subsurface flow by deposition, absorption, plant uptake, denitrification and other processes. This would reduce pollution and protect surface and subsurface water quality.
CP-22	<i>Riparian Buffer</i>	The purpose of this practice is to remove nutrients, sediment, organic matter, pesticides and other pollutants from surface runoff and subsurface flow, create shade to lower water temperature to improve aquatic habitat, and provide a source of detritus and large woody debris for aquatic organisms and habitat for wildlife. This would reduce pollution and protect surface and subsurface water quality.
CP-23	<i>Wetland Restoration, Floodplain</i>	The purpose of this practice is to restore the functions and values of wetland ecosystems that have been devoted to agricultural use. The level of restoration of the wetland ecosystem shall be determined by the producer in consultation with NRCS or TSP.
CP-23A	<i>Wetland Restoration, Non-Floodplain</i>	The purpose of this practice is to restore the functions and values of wetland ecosystems that have been devoted to agricultural use. The level of restoration of the wetland ecosystem shall be determined by the producer in consultation with NRCS or TSP.
CP-31	<i>Bottomland Timber Establishment on Wetlands</i>	The purpose of this practice is to provide for the long term viability of bottomland hardwood stands of trees that would control surface erosion, reduce water, air, and land pollution, restore the functions and values of wetlands, promote carbon sequestration, and restore and connect wildlife habitat that has been devoted to agricultural use.

Grants	Allotted	Distributed to Districts	Balance on Grants	s/s	s	1st installment	2nd installment
08 CWI	\$ 1,219,000.00	\$ 1,146,230.74	\$ 8,069.26	\$	34,239.05	\$ 31,291.69	\$ 1,075,800.00 \$ 4,900.00
09 CWI AFR	\$ 920,000.00	\$ 880,000.00	\$ 40,000.00				
08 SNRG	\$210,500.00	\$ 204,650.00	\$5,850.00				
09 SNRG	\$ 284,887.00	\$ 270,643.00	\$ 14,244.00				
ECAP	\$ 300,000.00	\$ 181,595.00	\$ 118,405.00				

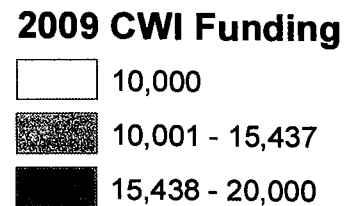
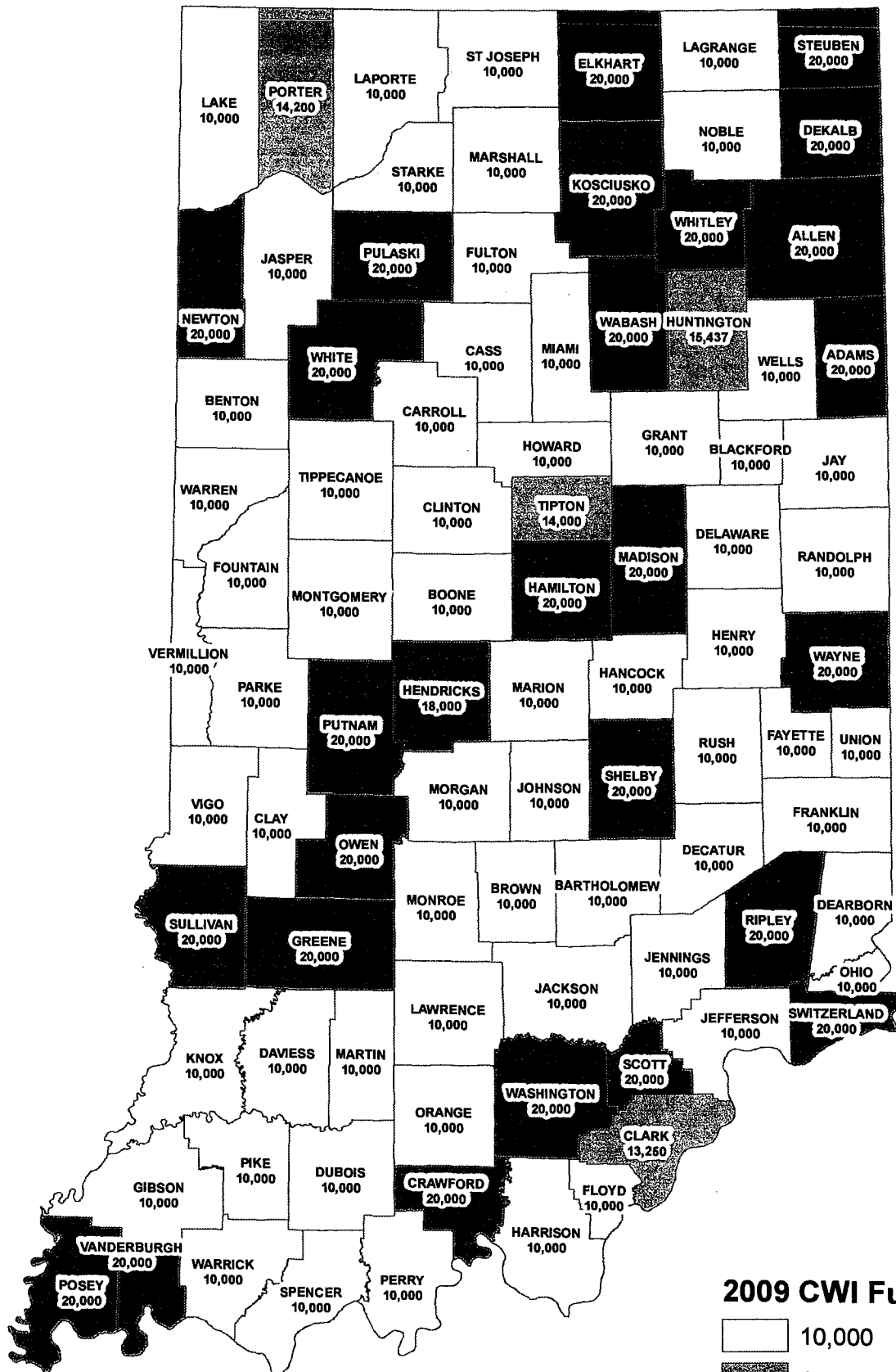
The Supervisor/ Staff Training grant for \$ 1500 is used to pay for individuals to attend Annual conference (registration, hotel, mileage, per diem, and parking). About 10% of the total grant is for other training programs held throughout the state. Two counties did not participate in this incentive. The 49 counties that I have sent to auditor could have utilized \$ 67500 but some did not advantage of their total allotment therefore only \$ 8069.26 has been sent to districts. This is about 89% of allotted funds.

88 Counties have complete their contract with the Soils Division for the \$ 10,000.00 AFR Grant. These have been sent to Auditor and should be paid in a few weeks

53 counties have been involved in CMIG events with a total of 2420 participates

09 SNRG will soon start sending in their final reports.

2009 CWI Funding

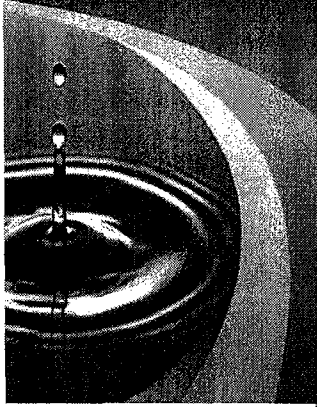


www.iaswcd.org



Indiana Association of
Soil and Water
Conservation Districts

Protecting and enhancing Indiana's soil
and water resources for all Hoosiers



IASWCD

225 S. East Street
Suite 740
Indianapolis, IN 46202

Phone: 317.692.7325
Fax: 317.423.0756
Web: www.iaswcd.org

PRESIDENT:

Paula Baldwin
Marion County

VICE PRESIDENT:

Ray McCormick
Knox County

TREASURER:

Brian Campbell
Elkhart County

SECRETARY:

Jeff Meinders
Ripley County

EXECUTIVE DIRECTOR:

Jennifer Boyle Warner
Jennifer-boyle@iaswcd.org

To: State Soil Conservation Board
From: Paula Baldwin, President, IASWCD
Date: Tuesday, June 9, 2009

CWI Program/2009 Legislative session
HB 1204 – Clean Water Indiana language

- Clarifies that the CWI fund does not revert to any fund at the end of a fiscal year
- Signed by the Governor and is now law

Budget Bill

- Bill that failed final vote did include \$500,000/yr in general fund appropriation for the CWI program.
- IASWCD continues to work to see it included in passed budget bill.

Conservation Cropping Systems Initiative Update

- The oversight committee conducted interviews on Friday, June 5. Draft contract language with ISDA and NRCS is still being worked on for the contribution agreements for the funding of the positions.

Pathway to Water Quality

- Volunteer sign up for the state fair will be released soon. The fair has added 5 days to the schedule; many volunteers will be needed. The committee is trying to reach out beyond the partnership to recruit volunteers.

SWCD Foundation

- After 10 years, the board members of the SWCD Foundation made the decision to terminate the Foundation after all current funds are distributed. SWCDs with endowments are receiving a letter and are encouraged to set up an endowment with their local community foundation. Assets can then be given directly to the local community foundation. Jim Williams, Treasurer of the SWCD Foundation will assist any SWCDs who need help.

THE IASWCD MISSION is to represent SWCDs as one voice and assist the leadership of local Districts through coordination and education for the wise use and management of our natural resources.

USDA **NEWS RELEASE** FSA

PR 09-12

Indiana Farm Service Agency
Public Affairs Staff

5981 Lakeside Blvd.
Indianapolis, IN 46278

Rick Kelley 317-290-3030, ext. 213
Rick.kelley@in.usda.gov

FSA COUNTY COMMITTEE NOMINATIONS START JUNE 15

Indianapolis, Indiana, June 5, 2009 – Don Hunton, Acting Executive Director for USDA's Farm Service Agency in Indiana today announced farmer and rancher candidate nominations begin June 15 for local Farm Service Agency (FSA) county committees. The nomination period continues through Aug. 3, 2009. Elections take place this fall.

"I encourage all producers to participate in the county committee election process by nominating candidates by the August 3rd deadline," said Hunton. "We are counting on as much participation as possible, because county committees are an important link between the farm community and the U.S. Department of Agriculture. We have seen a trend in recent years of increased nominations of minority and women producers and we hope that will continue."

To be eligible to serve on an FSA county committee, a person must participate or cooperate in a program administered by FSA, be eligible to vote in a county committee election and reside in the local administrative area in which the person is a candidate.

Producers may also nominate themselves, and organizations representing minority and women may also nominate candidates. To become a nominee, eligible individuals must sign form FSA-669A. The form and other valuable information about FSA county committee elections are available online at: <http://www.fsa.usda.gov/FSA/webapp?area=newsroom&subject=landing&topic=cce>. Nomination forms for the 2009 election must be postmarked or received in the local USDA Service Center by close of business on Aug. 3, 2009.

FSA county committee members make decisions on disaster and conservation programs, emergency programs, commodity price support loan programs and other important agricultural issues. Members serve three-year terms. Nationwide, there are more than 7,800 farmers and ranchers serving on FSA county committees. Committees consist of three to five members who are elected by eligible local producers.

FSA will mail ballots to producers beginning Nov. 6th. The voted ballots are due back to the local county office either via mail or in person by Dec. 7, 2009. Newly elected committee members and alternates take office Jan. 1, 2010.

The U.S. Department of Agriculture (USDA) prohibits discrimination in all its program and activities on the basis of race, color, national origin, age, disability, and where applicable, sex, marital status, familial status, parental status, religion, sexual orientation, genetic information, political beliefs, reprisal, or because all or part of an individual's income is derived from any public assistance program. (Not all prohibited bases apply to all programs.) Persons with disabilities who require alternative means for communication of program information (Braille, large print, audiotape, etc.) should contact USDA's TARGET Center at (202) 720-2600 (voice and TDD). To file a complaint of discrimination, write to USDA, Director, Office of Adjudication and Compliance, 1400 Independence Avenue, S.W., Washington, D.C. 20250-9410, or call (800) 795-3272 (voice) or (202) 720-6382 (TDD). USDA is an equal opportunity provider and employer.

#

American Reinvestment and Recovery Act Update

USDA Secretary Vilsack announced Tuesday, June 2 that Indiana will receive one Watershed Operations project, and 13 Floodplain Easement projects. Indiana's 13 floodplain easement projects total \$8,150,472 for 3,016 acres. Floodplain easement applications were selected in Daviess, Gibson, Knox, Posey, Sullivan, Tippecanoe and Warren counties. Indiana's Honey Creek project in Vigo County was selected to receive \$3.3 million in Watershed Operations funding.

Farm Bill Update

District Conservationists continue to assist landowners with conservation planning and accept applications for all programs. Fiscal Year 2009 ranking and evaluation criteria have been established for the Environmental Quality Incentives Program (EQIP), Wildlife Habitat Incentives Program (WHIP), and Grassland Reserve Program (GRP). District Conservationists can start obligating dollars on June 3rd.

The new Organic Initiative, originally scheduled to end May 29, has been extended in Indiana to be a continuous sign-up for Fiscal Year 2009. The new Organic Initiative, funded through the Environmental Quality Incentives Program (EQIP), was introduced earlier this month. Because of delays that producers are experiencing in getting into their fields due to the heavy rains, Indiana NRCS is waiving the deadline for Organic Initiative applications.

USGS Guaging Station Information Available

The USGS has streamgauge information available at the click of a button, or just a text message away. Information includes real time stream level and flow information that can be used to predict floods and to assess flooding conditions. Information on how to access these resources is available:

On the Internet at <http://in.water.usgs.gov>

Clicking on the Indiana map will link to a larger scale state map where the user can see individual station data and link to plots of stream stage.

Via Streammail (gauge data from email enabled cell phone) or email

Send email to streammail@usgs.gov with 8 digit USGS gage number in subject line. Gage numbers can be found on the Web site <http://in.water.usgs.gov> under "View Site List" (next to the state map).

Reminder: Minority Farmer Conservation Achievement Award

The NRCS Civil Rights committee has developed the Minority Farmer Conservation Achievement Award to honor an individual farm operator for outstanding achievements in the planning and implementation of conservation practices on the land. Outstanding achievements can be defined many ways, such as:

- Level of conservation achieved (practices implemented & resource concerns addressed)
- Interactions with local USDA Service Center staff
- Challenges the producer is facing or has overcome
- Previous awards the producer has received
- Leadership in promoting conservation in the community by serving on boards, committees, or other leadership positions such as Soil & Water Conservation District, Farm Bureau, 4-H, etc.

The application form is available on the Indiana home page at <http://www.in.nrcs.usda.gov/intranet/bulletins2008.html> and can be submitted to Bennie Clark at bennie.clark@in.usda.gov by August 30, 2009.

RD Renewable Energy Systems and Energy Efficiency Program

USDA Rural Development is accepting applications for FY 2009 funding for the Renewable Energy Systems and Energy Efficiency Improvements Program. The program is designed to help agriculture producers and rural small businesses reduce energy costs and consumption and help meet the nation's critical energy needs. Grants, guaranteed loans and loan and grant combinations are available. This is a highly competitive national program with matching funds requirements. **Complete applications must be RECEIVED in the RD State Office no later than 4:30 local time July 31, 2009.** More information is available at www.rurdev.usda.gov/rbs/busp/9006grant.htm.