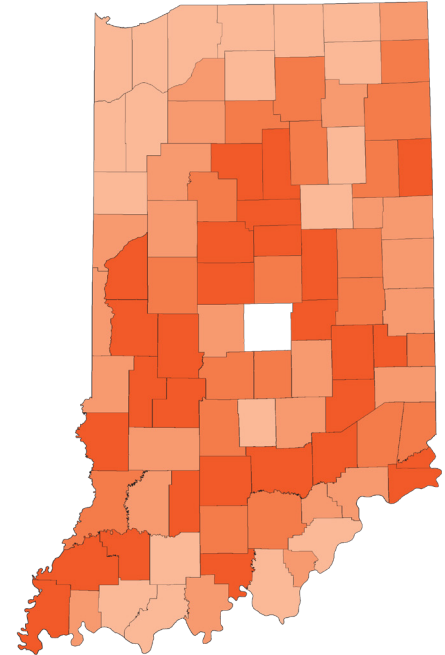
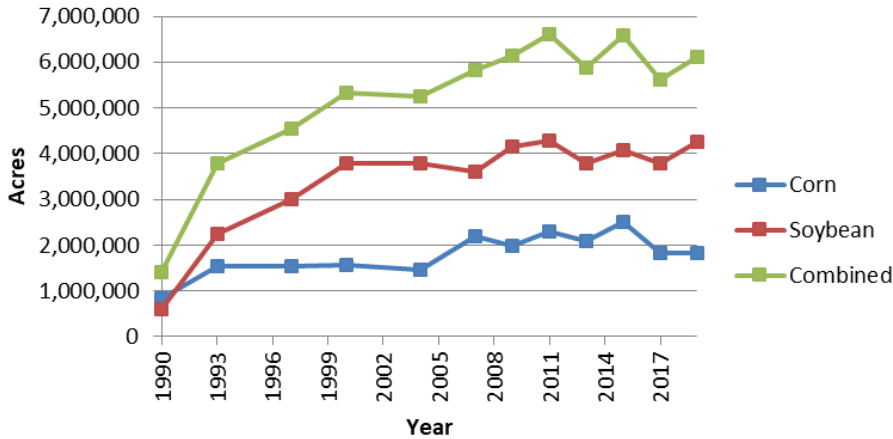


Indiana Statewide Tillage: 1990-2019



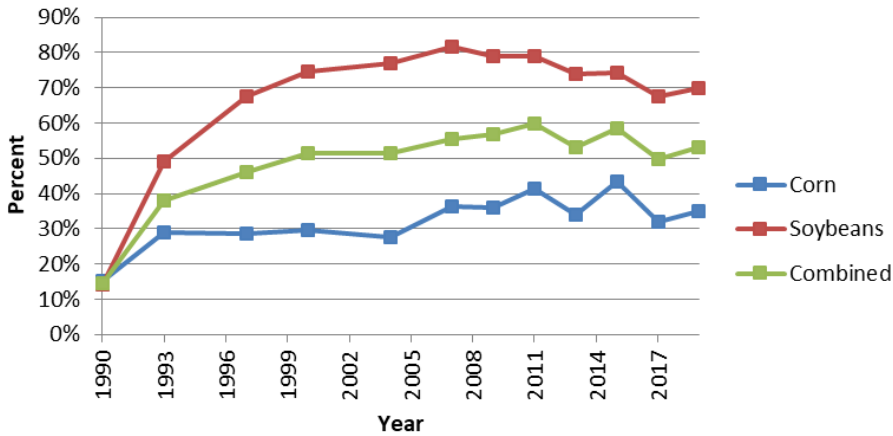
Conservation Tillage: any system that leaves at least 30% residue cover after planting

Conservation Tillage Acreage



*Note: Darker colors had a greater percent increase in total conservation tillage acres (corn and soybeans) from 1990-2019

Conservation Tillage Percentage



* Please note that not all counties have data for all years. No tillage data is collected for Marion county.

| Conservation Tillage Percentage Change 1990-2019 | | |
|--|-------------------------|----------------|
| | Percentage Point Change | Percent Change |
| Corn | 20 | 133% |
| Soybeans | 56 | 400% |
| Combined | 38 | 271% |

| Conservation Tillage Acreage Change 1990-2019 | | |
|---|-----------|----------------|
| | Acres | Percent Change |
| Corn | 1,011,693 | 122% |
| Soybeans | 3,677,082 | 625% |
| Combined | 4,688,775 | 332% |

| Conservation Tillage Implementation | | | | | | | | | | | | |
|-------------------------------------|-----------|-----------|-----------|-----------|-----------|-----------|-----------|-----------|-----------|-----------|-----------|-----------|
| Acreage | 1990 | 1993 | 1997 | 2000 | 2004 | 2007 | 2009 | 2011 | 2013 | 2015 | 2017 | 2019 |
| Corn | 824,200 | 1,536,438 | 1,528,779 | 1,558,708 | 1,455,828 | 2,202,153 | 1,988,000 | 2,304,200 | 2,086,900 | 2,507,600 | 1,816,156 | 1,835,893 |
| Soybeans | 588,159 | 2,244,690 | 3,009,387 | 3,781,933 | 3,797,671 | 3,613,545 | 4,156,160 | 4,296,000 | 3,796,600 | 4,065,500 | 3,797,793 | 4,265,241 |
| Combined | 1,412,359 | 3,781,128 | 4,538,166 | 5,340,641 | 5,253,499 | 5,815,697 | 6,144,160 | 6,600,200 | 5,883,500 | 6,573,100 | 5,613,949 | 6,101,134 |
| Percentage | 1990 | 1993 | 1997 | 2000 | 2004 | 2007 | 2009 | 2011 | 2013 | 2015 | 2017 | 2019 |
| Corn | 15% | 29% | 29% | 29% | 28% | 36% | 36% | 41% | 34% | 40% | 32% | 35% |
| Soybeans | 14% | 49% | 67% | 75% | 77% | 82% | 79% | 79% | 74% | 79% | 68% | 70% |
| Combined | 15% | N/A | N/A | 52% | 52% | 55% | 57% | 60% | 52% | 58% | 50% | 53% |