



Anatoxin-A ELISA Summary Report

Office of Water Quality - Watershed Assessment and Planning Branch

Sample #	Location	Date Collected	Date Analyzed	Conc. (ppb)
AB25973	Potato Creek SP	6/20/2016	6/21/2016	< 0.150
AB25974	Field Blank	6/20/2016	6/21/2016	< 0.150
AB25975	Potato Creek (Field Duplicate)	6/20/2016	6/21/2016	< 0.150
AB25976	Chain O'Lakes SP	6/20/2016	6/21/2016	< 0.150
AB25976LD	Chain O'Lakes (Lab Duplicate)	6/20/2016	6/21/2016	< 0.150
20160620LB	Lab Blank	6/20/2016	6/21/2016	< 0.150



Assay Calibration Report

Assay Information

Assay Name: Anatoxin a ELISA (2 rep) Units: ng/mL
 Assay Mode: 4-Parameter Logistic # of decimals: 3
 Normal: 0.150 - 5.000 Assay Description: ELISA

Controls:

Normal Control

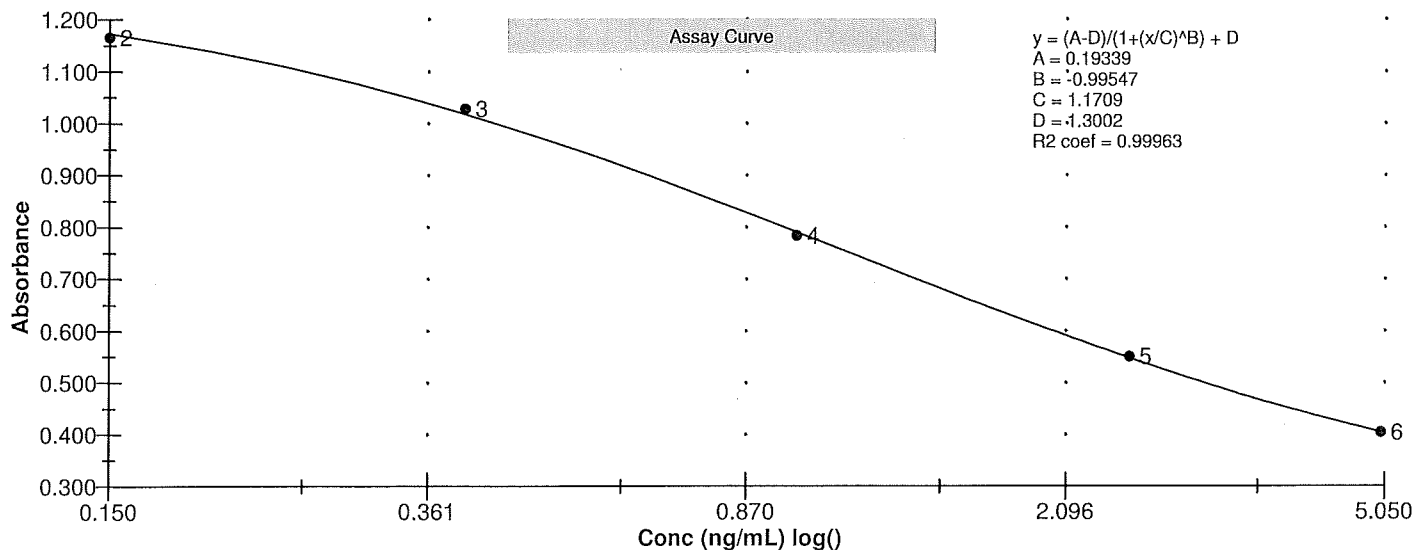
Standards:

Std1, Concentration = 0.000, Minimum number to use: 2
 Std2, Concentration = 0.150, Minimum number to use: 2
 Std3, Concentration = 0.400, Minimum number to use: 2
 Std4, Concentration = 1.000, Minimum number to use: 2
 Std5, Concentration = 2.500, Minimum number to use: 2
 Std6, Concentration = 5.000, Minimum number to use: 2
 Curve valid interval: 7 days 0 hours
 Axis Mode: Y = Abs, X = Log(Conc)

Assay Calibration and Statistics

Name	Absorbance	Concentration	Position
6/21/2016 11:07:39 AM			
Std1	1.294 Abs	0.007 ng/mL	A01
Std1	1.309 Abs	< 0.000 ng/mL	B01
Std2	1.177 Abs	0.145 ng/mL	C01
Std2	1.154 Abs	0.177 ng/mL	D01
Std3	1.027 Abs	0.382 ng/mL	E01
Std3	1.030 Abs	0.376 ng/mL	F01
Std4	0.767 Abs	1.088 ng/mL	G01
Std4	0.798 Abs	0.972 ng/mL	H01
Std5	0.548 Abs	2.493 ng/mL	A02
Std5	0.553 Abs	2.442 ng/mL	B02
Std6	0.400 Abs	> 5.000 ng/mL	C02
Std6	0.407 Abs	4.930 ng/mL	D02
6/21/2016 11:07:39 AM			
Normal Control	0.910 Abs	0.636 ng/mL	F02
Normal Control	0.812 Abs	0.923 ng/mL	E02

Name	Mean Abs	SD Abs	CV Abs	Mean Conc	SD Conc	CV Conc	Diff Conc
Std1	1.302	0.011	0.81				
Std2	1.166	0.016	1.40	0.161	0.023	14.05	7.33
Std3	1.028	0.002	0.21	0.379	0.004	1.12	-5.25
Std4	0.783	0.022	2.80	1.030	0.082	7.96	3.00
Std5	0.550	0.004	0.64	2.467	0.036	1.46	-1.32
Std6	0.404	0.005	1.23				-100.00
Normal Control	0.861	0.069	8.05	0.780	0.203	26.03	



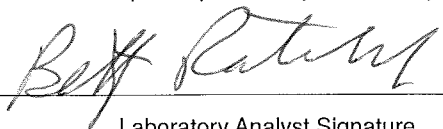


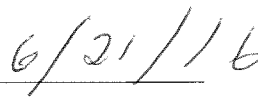
Test Report

Test Information

Name/ID	Assay	Absorbance	Concentration	Interpretation	Reference	Position
6/21/2016 11:07:39 AM						
Std1	Anatoxin a ELISA (2 rep)	1.294 Abs	0.007 ng/mL		0.000	A01
Std1	Anatoxin a ELISA (2 rep)	1.309 Abs	< 0.000 ng/mL		0.000	B01
Std2	Anatoxin a ELISA (2 rep)	1.177 Abs	0.145 ng/mL		0.150	C01
Std2	Anatoxin a ELISA (2 rep)	1.154 Abs	0.177 ng/mL		0.150	D01
Std3	Anatoxin a ELISA (2 rep)	1.027 Abs	0.382 ng/mL		0.400	E01
Std3	Anatoxin a ELISA (2 rep)	1.030 Abs	0.376 ng/mL		0.400	F01
Std4	Anatoxin a ELISA (2 rep)	0.767 Abs	1.088 ng/mL		1.000	G01
Std4	Anatoxin a ELISA (2 rep)	0.798 Abs	0.972 ng/mL		1.000	H01
Std5	Anatoxin a ELISA (2 rep)	0.548 Abs	2.493 ng/mL		2.500	A02
Std5	Anatoxin a ELISA (2 rep)	0.553 Abs	2.442 ng/mL		2.500	B02
Std6	Anatoxin a ELISA (2 rep)	0.400 Abs	> 5.000 ng/mL		5.000	C02
Std6	Anatoxin a ELISA (2 rep)	0.407 Abs	4.930 ng/mL		5.000	D02
Normal Control	Anatoxin a ELISA (2 rep)	0.812 Abs	0.923 ng/mL			E02
Normal Control	Anatoxin a ELISA (2 rep)	0.910 Abs	0.636 ng/mL			F02
AB25973	Anatoxin a ELISA (2 rep)	1.326 Abs	< 0.000 ng/mL	Out(LR)	0.150 - 5.000	G02
AB25973	Anatoxin a ELISA (2 rep)	1.319 Abs [1.3225] {0.4 C	< 0.000 ng/mL [< 0.000]	Out(LR) [Out(LR)]	0.150 - 5.000	H02
AB25974	Anatoxin a ELISA (2 rep)	1.353 Abs	< 0.000 ng/mL	Out(LR)	0.150 - 5.000	A03
AB25974	Anatoxin a ELISA (2 rep)	1.325 Abs [1.3390] {1.5 C	< 0.000 ng/mL [< 0.000]	Out(LR) [Out(LR)]	0.150 - 5.000	B03
AB25975	Anatoxin a ELISA (2 rep)	1.272 Abs	0.030 ng/mL	LOW	0.150 - 5.000	C03
AB25975	Anatoxin a ELISA (2 rep)	1.265 Abs [1.2685] {0.4 C	0.038 ng/mL [0.034] {16.6 CV}	Low [Low]	0.150 - 5.000	D03
AB25976	Anatoxin a ELISA (2 rep)	1.252 Abs	0.052 ng/mL	LOW	0.150 - 5.000	E03
AB25976	Anatoxin a ELISA (2 rep)	1.363 Abs [1.3075] {6.0 C	< 0.000 ng/mL [< 0.000]	Out(LR) [Out(LR)]	0.150 - 5.000	F03
AB25976LD	Anatoxin a ELISA (2 rep)	1.345 Abs	< 0.000 ng/mL	Out(LR)	0.150 - 5.000	G03
AB25976LD	Anatoxin a ELISA (2 rep)	1.370 Abs [1.3575] {1.3 C	< 0.000 ng/mL [< 0.000]	Out(LR) [Out(LR)]	0.150 - 5.000	H03
20160620LB	Anatoxin a ELISA (2 rep)	1.320 Abs	< 0.000 ng/mL	Out(LR)	0.150 - 5.000	A04
20160620LB	Anatoxin a ELISA (2 rep)	1.349 Abs [1.3345] {1.5 C	< 0.000 ng/mL [< 0.000]	Out(LR) [Out(LR)]	0.150 - 5.000	B04

The data in this report is preliminary without a quality control report. This data is not warranted for accuracy or other purposes.


Laboratory Analyst Signature


Date