



Anatoxin-A Receptor-Binding Assay Summary Report

Office of Water Quality - Watershed Assessment and Planning Branch

Sample #	Location	Date Collected	Date Analyzed	Conc. (ppb)
AB22622	Fairfax SRA	8/3/2015	8/4/2015	<10
AB22623	Paynetown SRA	8/3/2015	8/4/2015	<10
AB22624	Starve Hollow SRA	8/3/2015	8/4/2015	<10
AB22625	Deam Lake SRA	8/3/2015	8/4/2015	<10
AB22626	Hardy Lake SRA	8/3/2015	8/4/2015	<10
AB22627	Raccoon Lake SRA	8/4/2015	8/5/2015	<10
AB22628	Whitewater Memorial SP	8/4/2015	8/5/2015	<10
AB22629	Quakertown SRA	8/4/2015	8/5/2015	<10
AB22630	Mounds SRA	8/4/2015	8/5/2015	<10
AB22631	Hardy Lake (Field Duplicate)	8/3/2015	8/4/2015	<10
AB22632	Field Blank	8/3/2015	8/4/2015	<10
AB22624LD	Starve Hollow SRA (Lab Duplicate)	8/3/2015	8/4/2015	<10
20150805LB	Lab Blank	8/4/2015	8/5/2015	<10



Test Report

Test Information

Name/ID	Assay	Absorbance	Concentration	Interpretation	Reference	Position
8/4/2015 2:55:14 PM						
Std1	ANATOXIN-A 1X	2.131 Abs	< 0.000 ng/mL		0.000	A01
Std1	ANATOXIN-A 1X	2.179 Abs	< 0.000 ng/mL		0.000	B01
Std1	ANATOXIN-A 1X	1.849 Abs	3.720 ng/mL		0.000	C01
Std2	ANATOXIN-A 1X	1.351 Abs	28.960 ng/mL		10.000	D01
Std3	ANATOXIN-A 1X	1.269 Abs	37.500 ng/mL		35.000	G01
Std4	ANATOXIN-A 1X	0.956 Abs	103.500 ng/mL		125.000	B02
Std4	ANATOXIN-A 1X	0.973 Abs	97.500 ng/mL		125.000	D02
Std5	ANATOXIN-A 1X	0.666 Abs	370.500 ng/mL		500.000	E02
Std5	ANATOXIN-A 1X	0.750 Abs	237.850 ng/mL		500.000	F02
Std5	ANATOXIN-A 1X	0.787 Abs	200.650 ng/mL		500.000	G02
AB22622	ANATOXIN-A 1X	2.169 Abs	< 0.000 ng/mL	Out(LR)	10.000 - 500.000	H02
AB22622	ANATOXIN-A 1X	1.766 Abs	0.079 ng/mL	LOW	10.000 - 500.000	A03
AB22622	ANATOXIN-A 1X	1.997 Abs [1.9773] {10.2	0.000 ng/mL [0.000] {141.4 CV	Low [Low]	10.000 - 500.000	B03
AB22623	ANATOXIN-A 1X	1.651 Abs	0.524 ng/mL	LOW	10.000 - 500.000	C03
AB22623	ANATOXIN-A 1X	1.784 Abs	0.055 ng/mL	LOW	10.000 - 500.000	D03
AB22623	ANATOXIN-A 1X	1.710 Abs [1.7150] {3.9 C	0.214 ng/mL [0.198] {90.2 CV}	Low [Low]	10.000 - 500.000	E03
AB22624	ANATOXIN-A 1X	1.768 Abs	0.075 ng/mL	LOW	10.000 - 500.000	F03
AB22624	ANATOXIN-A 1X	1.700 Abs	0.252 ng/mL	LOW	10.000 - 500.000	G03
AB22624	ANATOXIN-A 1X	1.743 Abs [1.7370] {2.0 C	0.121 ng/mL [0.135] {61.5 CV}	Low [Low]	10.000 - 500.000	H03
AB22625	ANATOXIN-A 1X	2.059 Abs	< 0.000 ng/mL	Out(LR)	10.000 - 500.000	A04
AB22625	ANATOXIN-A 1X	1.878 Abs	0.005 ng/mL	LOW	10.000 - 500.000	B04
AB22625	ANATOXIN-A 1X	1.772 Abs [1.9030] {7.6 C	0.070 ng/mL [0.002] {122.6 CV	Low [Low]	10.000 - 500.000	C04
AB22626	ANATOXIN-A 1X	1.764 Abs	0.082 ng/mL	LOW	10.000 - 500.000	D04
AB22626	ANATOXIN-A 1X	1.694 Abs	0.277 ng/mL	LOW	10.000 - 500.000	E04
AB22626	ANATOXIN-A 1X	1.712 Abs [1.7233] {2.1 C	0.207 ng/mL [0.171] {52.4 CV}	Low [Low]	10.000 - 500.000	F04
AB22631	ANATOXIN-A 1X	1.689 Abs	0.299 ng/mL	LOW	10.000 - 500.000	G04
AB22631	ANATOXIN-A 1X	1.869 Abs	0.007 ng/mL	LOW	10.000 - 500.000	H04
AB22631	ANATOXIN-A 1X	1.959 Abs [1.8390] {7.5 C	0.000 ng/mL [0.015] {167.3 CV	Low [Low]	10.000 - 500.000	A05
AB22632	ANATOXIN-A 1X	2.122 Abs	< 0.000 ng/mL	Out(LR)	10.000 - 500.000	B05
AB22632	ANATOXIN-A 1X	1.812 Abs	0.030 ng/mL	LOW	10.000 - 500.000	C05
AB22632	ANATOXIN-A 1X	1.739 Abs [1.8910] {10.8	0.131 ng/mL [0.003] {88.7 CV}	Low [Low]	10.000 - 500.000	D05
AB22624LD	ANATOXIN-A 1X	1.775 Abs	0.066 ng/mL	LOW	10.000 - 500.000	E05
AB22624LD	ANATOXIN-A 1X	1.726 Abs	0.163 ng/mL	LOW	10.000 - 500.000	F05
AB22624LD	ANATOXIN-A 1X	1.629 Abs [1.7100] {4.3 C	0.708 ng/mL [0.214] {110.8 CV	Low [Low]	10.000 - 500.000	G05

The data in this report is preliminary without a quality control report. This data is not warranted for accuracy or other purposes.

David Jordan

Laboratory Analyst Signature

8/5/2015

Date



Assay Calibration Report

Assay Information

Assay Name: ANATOXIN-A 1X
Assay Mode: 4-Parameter Logistic
Normal: 10.000 - 500.000
Units: ng/mL
of decimals: 3
Assay Description:

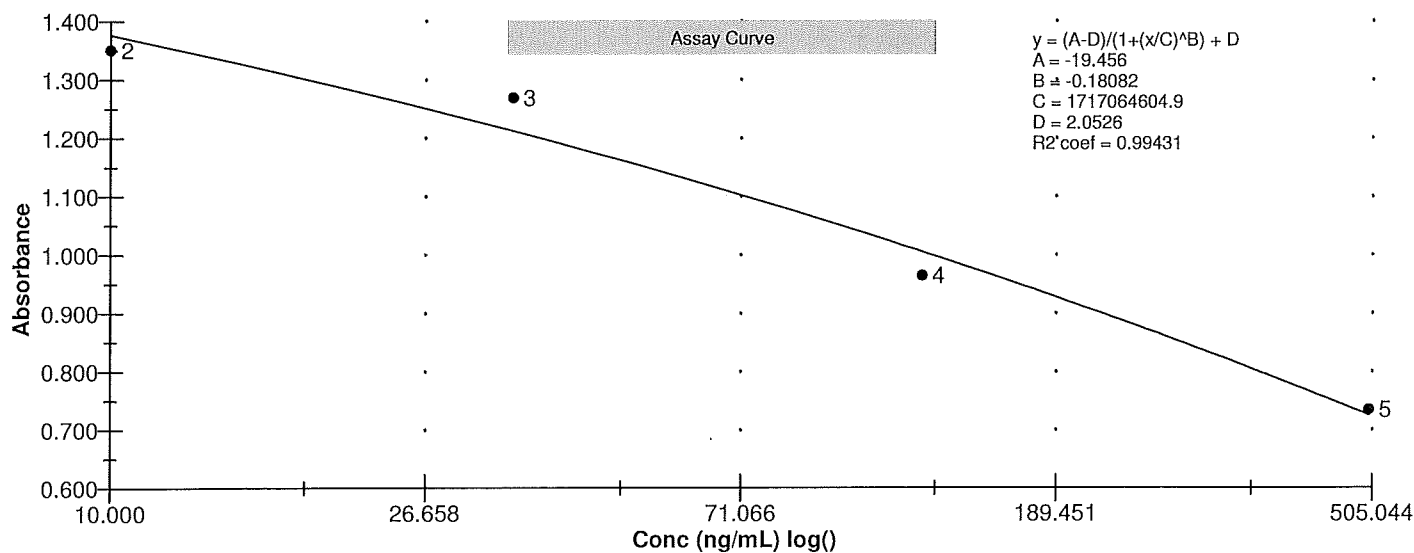
Standards:

Std1, Concentration = 0.000, Minimum number to use: 3
Std2, Concentration = 10.000, Minimum number to use: 3
Std3, Concentration = 35.000, Minimum number to use: 3
Std4, Concentration = 125.000, Minimum number to use: 3
Std5, Concentration = 500.000, Minimum number to use: 3
Curve valid interval: 7 days 0 hours
Axis Mode: Y = Abs, X = Log(Conc)

Assay Calibration and Statistics

Name	Absorbance	Concentration	Position
8/4/2015 2:55:14 PM			
Std1	2.131 Abs	< 0.000 ng/mL	A01
Std1	2.179 Abs	< 0.000 ng/mL	B01
Std1	1.849 Abs	0.012 ng/mL	C01
Std2	1.351 Abs	12.400 ng/mL	D01
Std3	1.269 Abs	23.350 ng/mL	G01
Std4	0.956 Abs	163.000 ng/mL	B02
Std4	0.973 Abs	148.850 ng/mL	D02
Std5	0.666 Abs	> 500.000 ng/mL	E02
Std5	0.750 Abs	446.500 ng/mL	F02
Std5	0.787 Abs	377.000 ng/mL	G02

Name	Mean Abs	SD Abs	CV Abs	Mean Conc	SD Conc	CV Conc	Diff Conc
Std1	2.053	0.178	8.68				
Std2	1.351			12.400			24.00
Std3	1.269			23.350			-33.29
Std4	0.964	0.012	1.25	155.925	10.006	6.42	24.74
Std5	0.734	0.062	8.44				-100.00





Test Report

Test Information

Name/ID	Assay	Absorbance	Concentration	Interpretation	Reference	Position
8/5/2015 2:22:57 PM						
Std1	ANATOXIN-A 1X	1.844 Abs	< 0.000 ng/mL		0.000	A01
Std1	ANATOXIN-A 1X	1.893 Abs	< 0.000 ng/mL		0.000	B01
Std1	ANATOXIN-A 1X	1.752 Abs	0.205 ng/mL		0.000	C01
Std2	ANATOXIN-A 1X	1.362 Abs	10.490 ng/mL		10.000	D01
Std2	ANATOXIN-A 1X	1.379 Abs	9.520 ng/mL		10.000	E01
Std2	ANATOXIN-A 1X	1.306 Abs	14.220 ng/mL		10.000	F01
Std3	ANATOXIN-A 1X	1.085 Abs	41.700 ng/mL		35.000	G01
Std3	ANATOXIN-A 1X	1.170 Abs	28.005 ng/mL		35.000	H01
Std3	ANATOXIN-A 1X	1.242 Abs	19.730 ng/mL		35.000	A02
Std4	ANATOXIN-A 1X	0.821 Abs	142.200 ng/mL		125.000	B02
Std4	ANATOXIN-A 1X	0.796 Abs	160.650 ng/mL		125.000	C02
Std4	ANATOXIN-A 1X	0.825 Abs	139.500 ng/mL		125.000	D02
Std5	ANATOXIN-A 1X	0.577 Abs	> 500.000 ng/mL		500.000	E02
Std5	ANATOXIN-A 1X	0.585 Abs	> 500.000 ng/mL		500.000	F02
Std5	ANATOXIN-A 1X	0.632 Abs	383.500 ng/mL		500.000	G02
AB22627	ANATOXIN-A 1X	1.990 Abs	< 0.000 ng/mL	Out(LR)	10.000 - 500.000	H02
AB22627	ANATOXIN-A 1X	2.011 Abs	< 0.000 ng/mL	Out(LR)	10.000 - 500.000	A03
AB22627	ANATOXIN-A 1X	1.947 Abs [1.9827] {1.6 C	< 0.000 ng/mL [< 0.000] {72.5 C	Out(LR) [Out(LR)]	10.000 - 500.000	B03
AB22628	ANATOXIN-A 1X	1.610 Abs	1.765 ng/mL	LOW	10.000 - 500.000	C03
AB22628	ANATOXIN-A 1X	1.650 Abs	1.145 ng/mL	LOW	10.000 - 500.000	D03
AB22628	ANATOXIN-A 1X	1.574 Abs [1.6113] {2.4 C	2.465 ng/mL [1.740] {36.9 CV}	Low [Low]	10.000 - 500.000	E03
AB22629	ANATOXIN-A 1X	1.769 Abs	0.125 ng/mL	LOW	10.000 - 500.000	F03
AB22629	ANATOXIN-A 1X	1.741 Abs	0.268 ng/mL	LOW	10.000 - 500.000	G03
AB22629	ANATOXIN-A 1X	1.868 Abs [1.7927] {3.7 C	< 0.000 ng/mL [0.047] {51.5 C\	Out(LR) [Low]	10.000 - 500.000	H03
AB22630	ANATOXIN-A 1X	1.628 Abs	1.465 ng/mL	LOW	10.000 - 500.000	A04
AB22630	ANATOXIN-A 1X	1.862 Abs	< 0.000 ng/mL	Out(LR)	10.000 - 500.000	B04
AB22630	ANATOXIN-A 1X	1.523 Abs [1.6710] {10.4	3.725 ng/mL [0.882] {61.6 CV}	Low [Low]	10.000 - 500.000	C04
20150805LB	ANATOXIN-A 1X	1.748 Abs	0.227 ng/mL	LOW	10.000 - 500.000	D04
20150805LB	ANATOXIN-A 1X	1.661 Abs	1.003 ng/mL	LOW	10.000 - 500.000	E04
20150805LB	ANATOXIN-A 1X	1.621 Abs [1.6767] {3.9 C	1.579 ng/mL [0.817] {72.5 CV}	Low [Low]	10.000 - 500.000	F04

The data in this report is preliminary without a quality control report. This data is not warranted for accuracy or other purposes.

Daniel Jordan

Laboratory Analyst Signature

8/5/2015

Date



Assay Calibration Report

Assay Information

Assay Name: ANATOXIN-A 1X Units: ng/mL
 Assay Mode: 4-Parameter Logistic # of decimals: 3
 Normal: 10.000 - 500.000 Assay Description:

Standards:

Std1, Concentration = 0.000, Minimum number to use: 3
 Std2, Concentration = 10.000, Minimum number to use: 3
 Std3, Concentration = 35.000, Minimum number to use: 3
 Std4, Concentration = 125.000, Minimum number to use: 3
 Std5, Concentration = 500.000, Minimum number to use: 3
 Curve valid interval: 7 days 0 hours
 Axis Mode: Y = Abs, X = Log(Conc)

Assay Calibration and Statistics

Name	Absorbance	Concentration	Position
8/5/2015 2:22:57 PM			
Std1	1.844 Abs	< 0.000 ng/mL	A01
Std1	1.893 Abs	< 0.000 ng/mL	B01
Std1	1.752 Abs	0.205 ng/mL	C01
Std2	1.362 Abs	10.490 ng/mL	D01
Std2	1.379 Abs	9.520 ng/mL	E01
Std2	1.306 Abs	14.220 ng/mL	F01
Std3	1.085 Abs	41.700 ng/mL	G01
Std3	1.170 Abs	28.005 ng/mL	H01
Std3	1.242 Abs	19.730 ng/mL	A02
Std4	0.821 Abs	142.200 ng/mL	B02
Std4	0.796 Abs	160.650 ng/mL	C02
Std4	0.825 Abs	139.500 ng/mL	D02
Std5	0.577 Abs	> 500.000 ng/mL	E02
Std5	0.585 Abs	> 500.000 ng/mL	F02
Std5	0.632 Abs	383.500 ng/mL	G02

Name	Mean Abs	SD Abs	CV Abs	Mean Conc	SD Conc	CV Conc	Diff Conc
Std1	1.830	0.072	3.91				
Std2	1.349	0.038	2.83	11.410	2.481	21.75	14.10
Std3	1.166	0.079	6.74	29.812	11.096	37.22	-14.82
Std4	0.814	0.016	1.93	147.450	11.511	7.81	17.96
Std5	0.598	0.030	4.97				-100.00

