

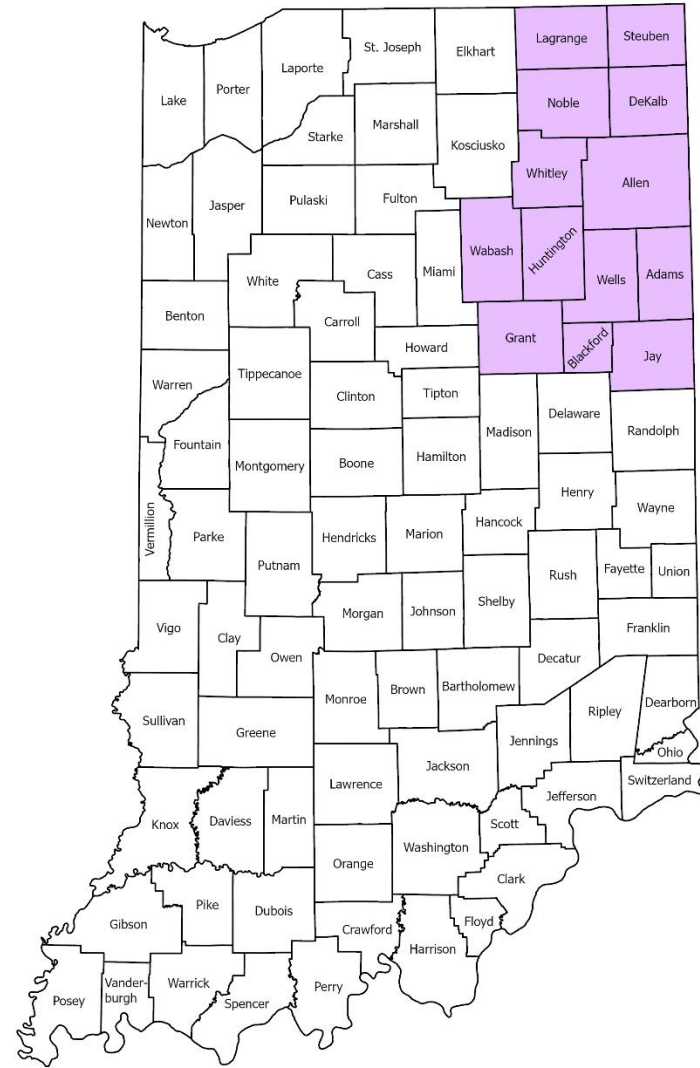
# Status of Indiana Air Quality 30-Year Trend Charts Northeast Indiana 1992-2021



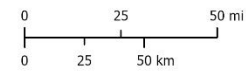
Indiana Department of Environmental Management (IDEM)  
Office of Air Quality

October 2022

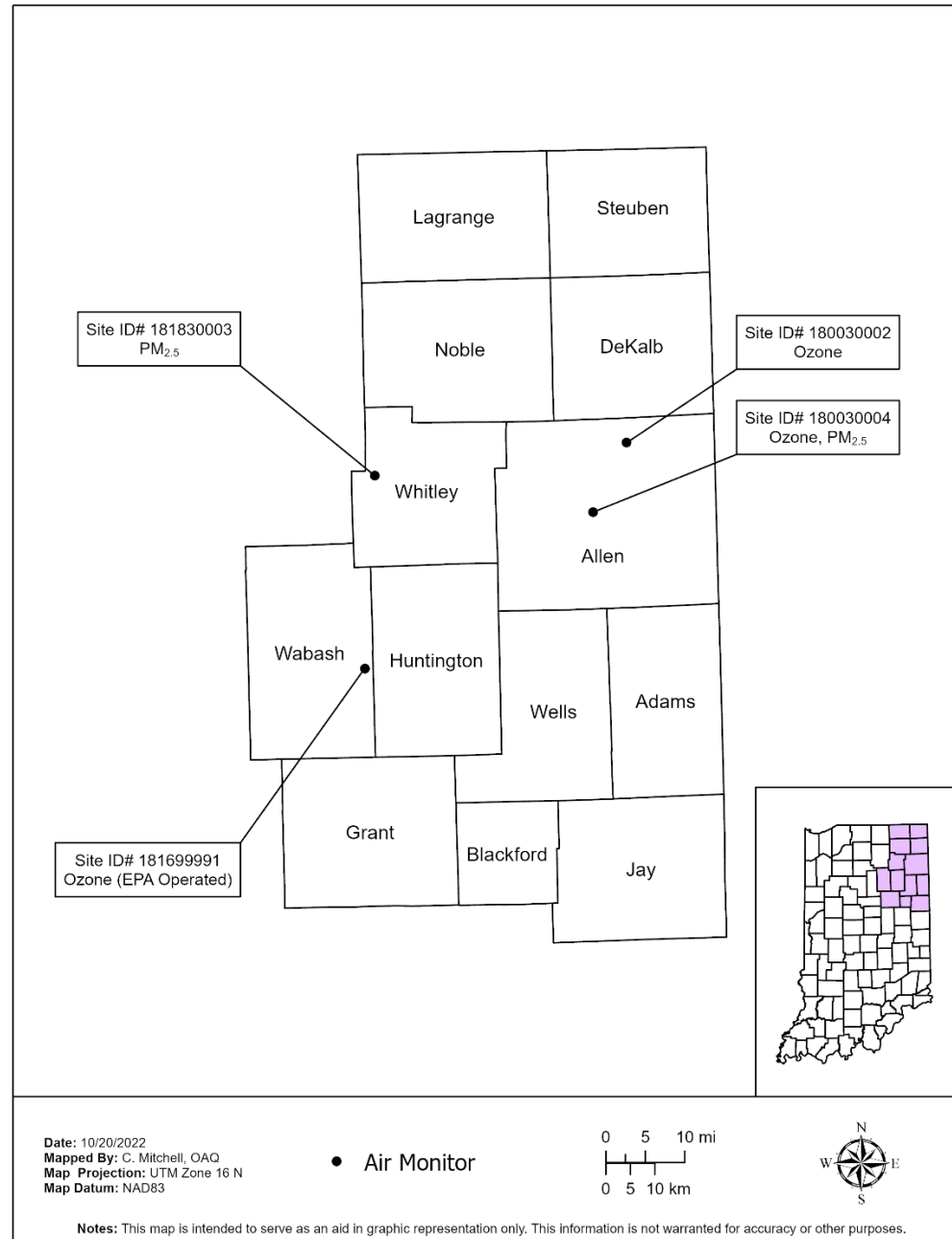
# Northeast Indiana Region



**Date:** 06/30/2022  
**Mapped By:** A. Smith, OAQ  
**Map Projection:** UTM Zone 16 N  
**Map Datum:** NAD83

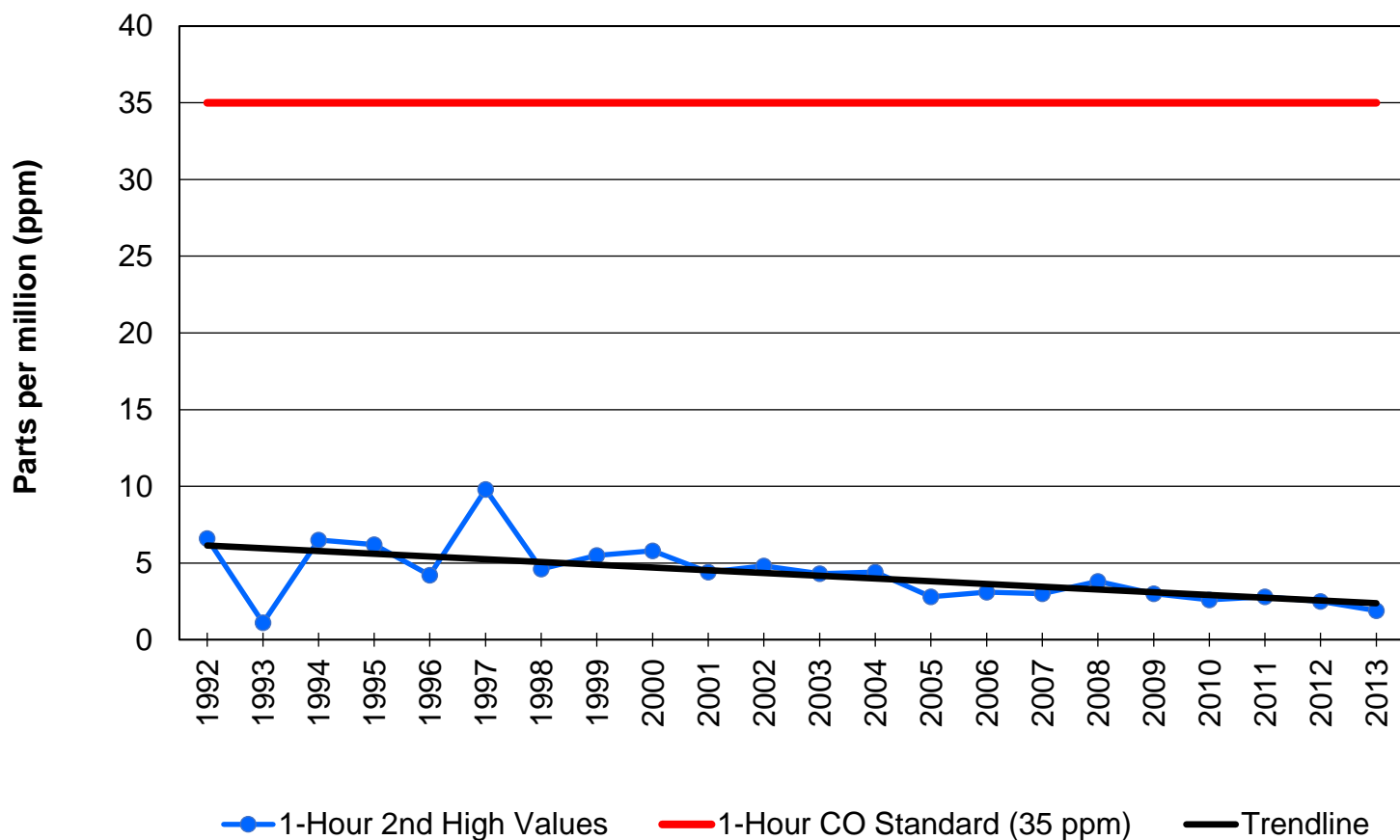


# Northeast Indiana Monitors Operating In 2021



# Carbon Monoxide

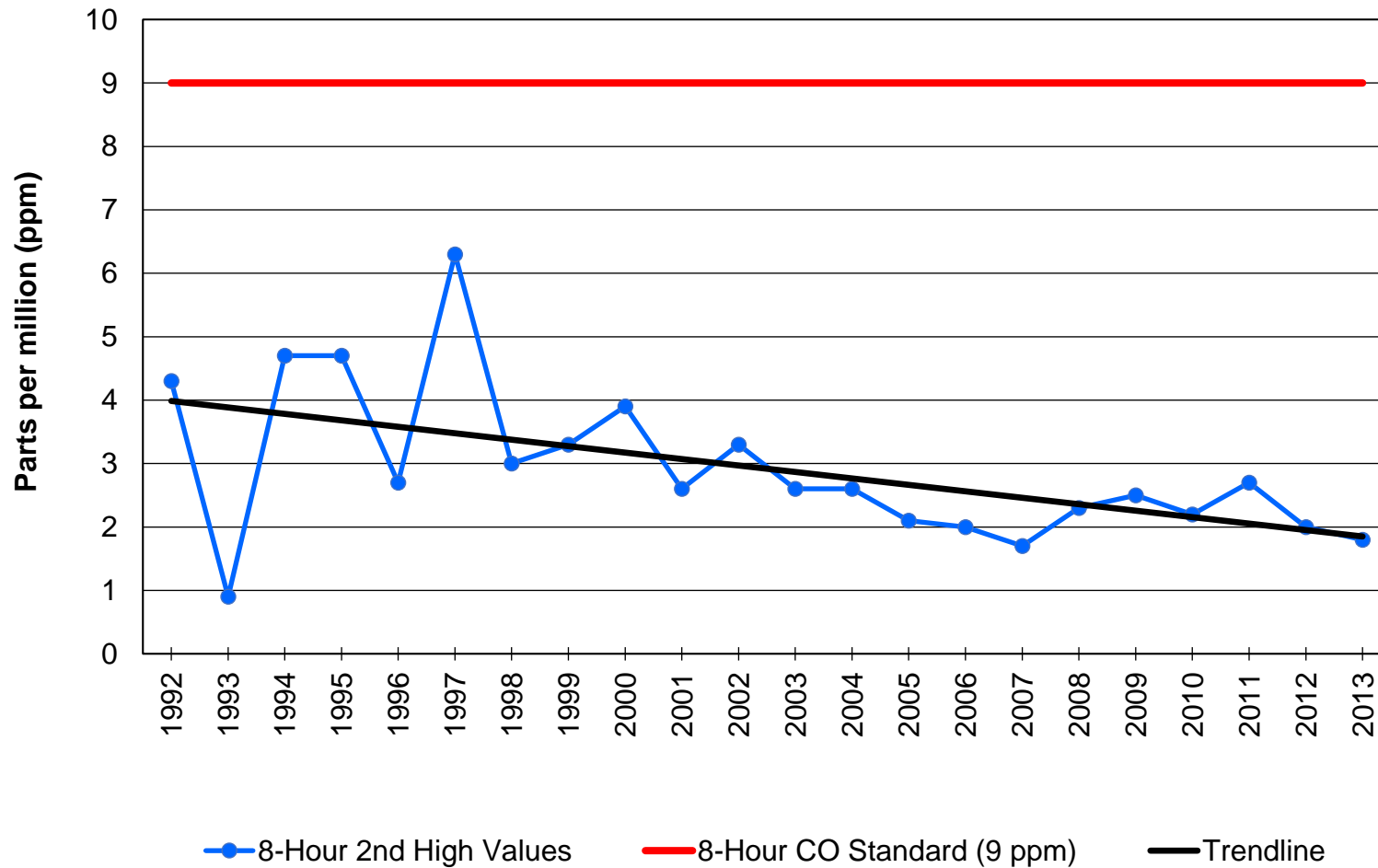
## 1-Hour CO 2<sup>nd</sup> High Values Northeast Indiana



In 1971, United States Environmental Protection Agency (U.S. EPA) established a 1-hour carbon monoxide (CO) standard ([36 FR 8186](#)). The standard was set at 35 parts per million (ppm) not to be exceeded more than once per year, therefore 2<sup>nd</sup> high values are compared to the standard.

# Carbon Monoxide

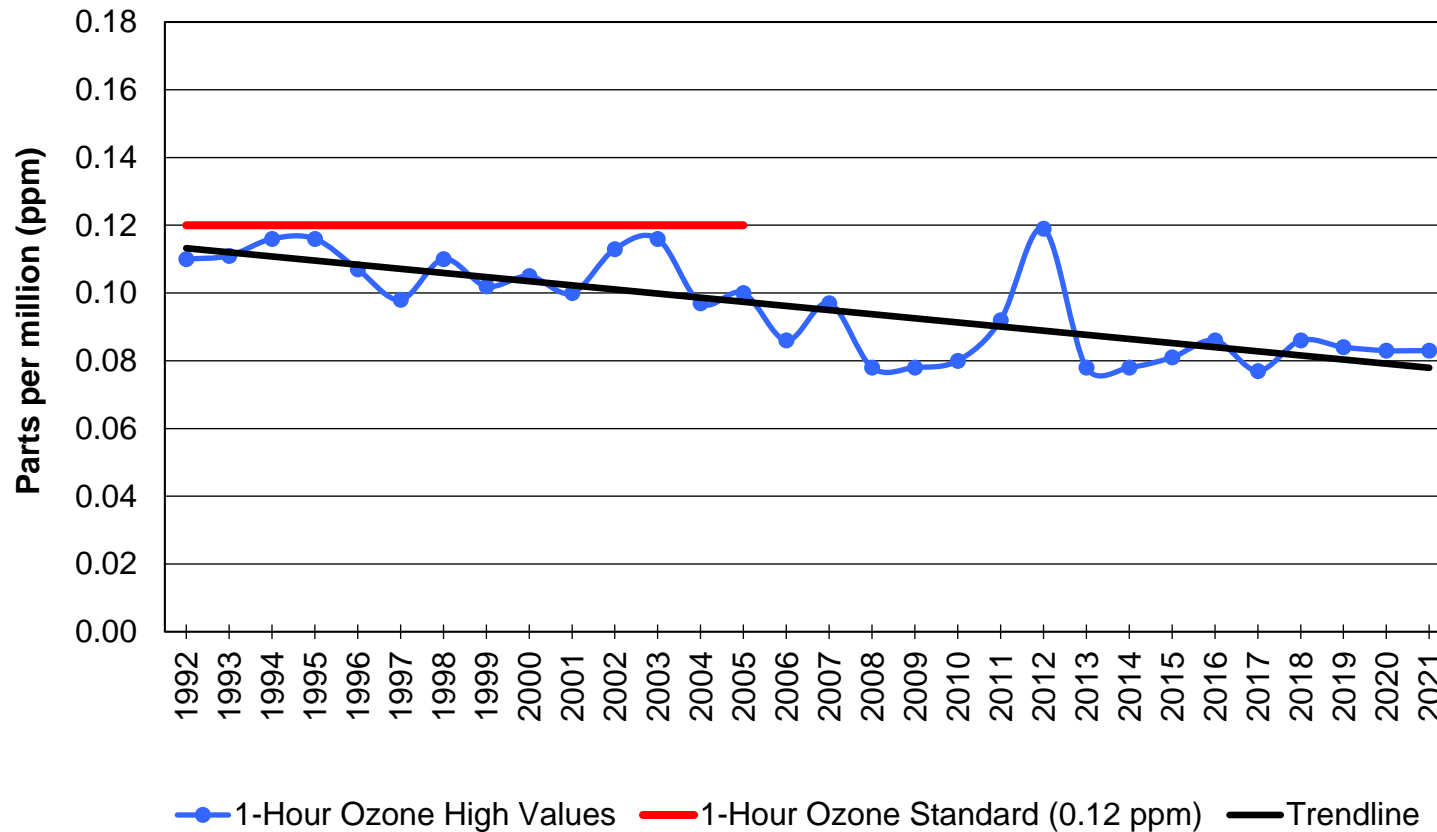
## 8-Hour CO 2<sup>nd</sup> High Values Northeast Indiana



In 1971, United States Environmental Protection Agency (U.S. EPA) established a 8-hour carbon monoxide (CO) standard ([36 FR 8186](#)). The standard was set at 9 parts per million (ppm) not to be exceeded more than once per year.

# Ozone

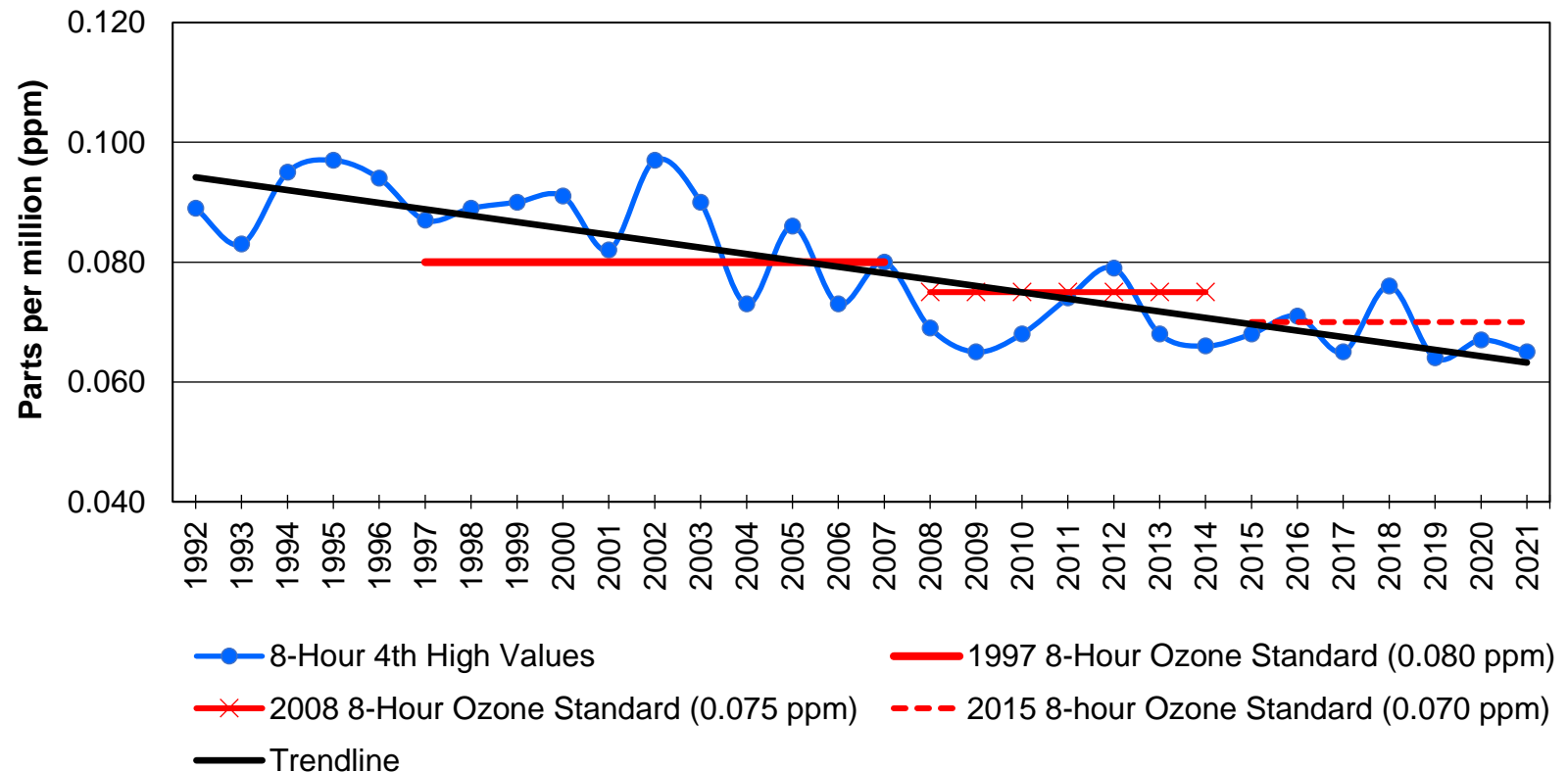
## 1-Hour Ozone High Values Northeast Indiana



In 1979, United States Environmental Protection Agency (U.S. EPA) established a 1-hour ozone standard ([44 FR 8202](#)). The standard was set at 0.12 parts per million (ppm) not to be exceeded more than once per year on average over three years. In 2005, U.S. EPA revoked the 1-hour standard, however IDEM continues to monitor for the standard.

# Ozone

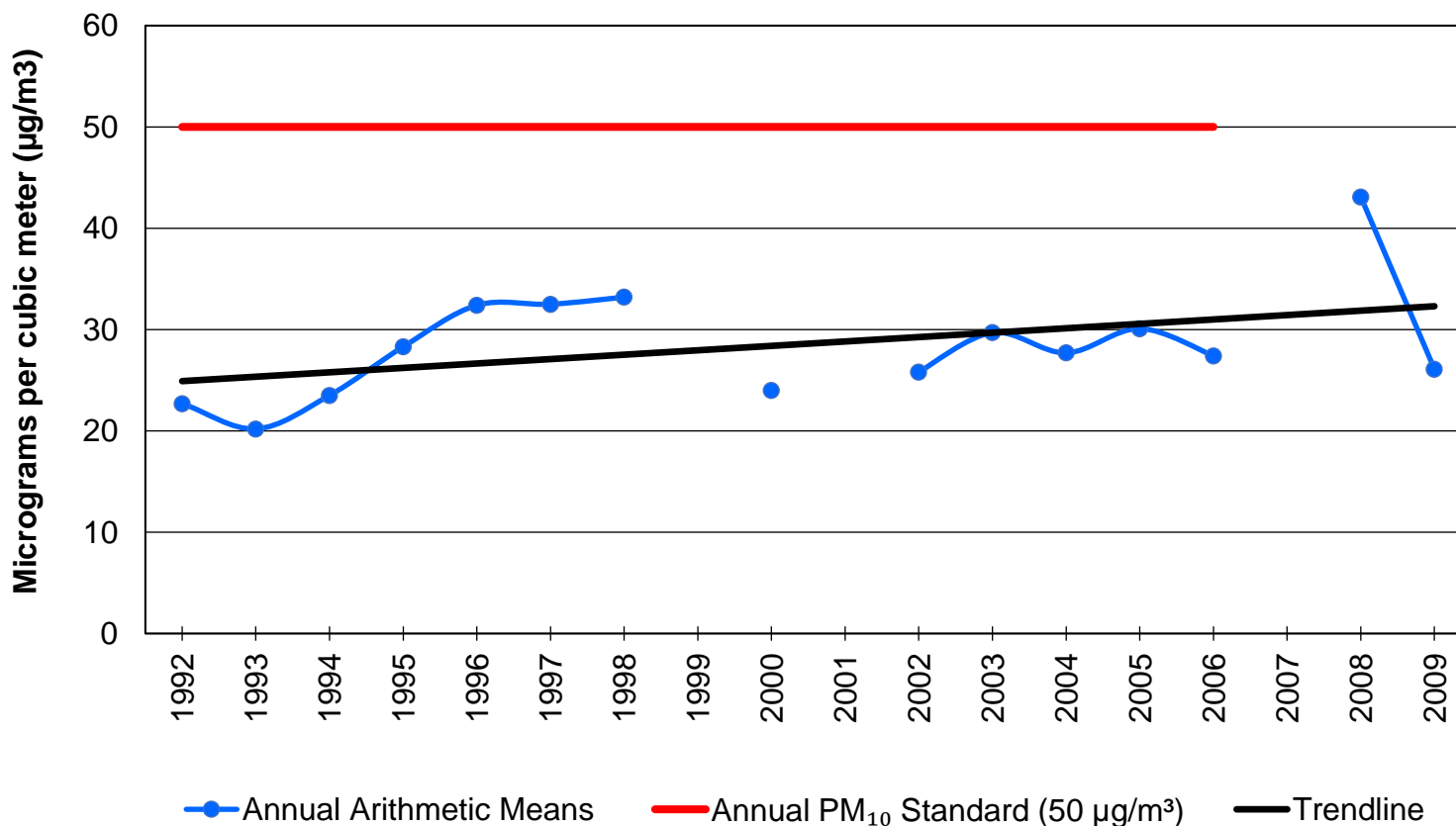
## 8-Hour Ozone 4<sup>th</sup> High Values Northeast Indiana



In 1997, United States Environmental Protection Agency (U.S. EPA) established an 8-hour ozone standard ([62 FR 38856](#)). The standard was set at 0.080 parts per million (ppm) not to be exceeded. In 2007, U.S. EPA lowered the 8-hour standard to 0.075 ppm not to be exceeded ([73 FR 16436](#)) and in 2015 further strengthened the standard to 0.070 ppm ([80 FR 65292](#)). Compliance is determined by evaluating the fourth highest daily maximum concentration averaged over a 3-year period.

# Particulate Matter

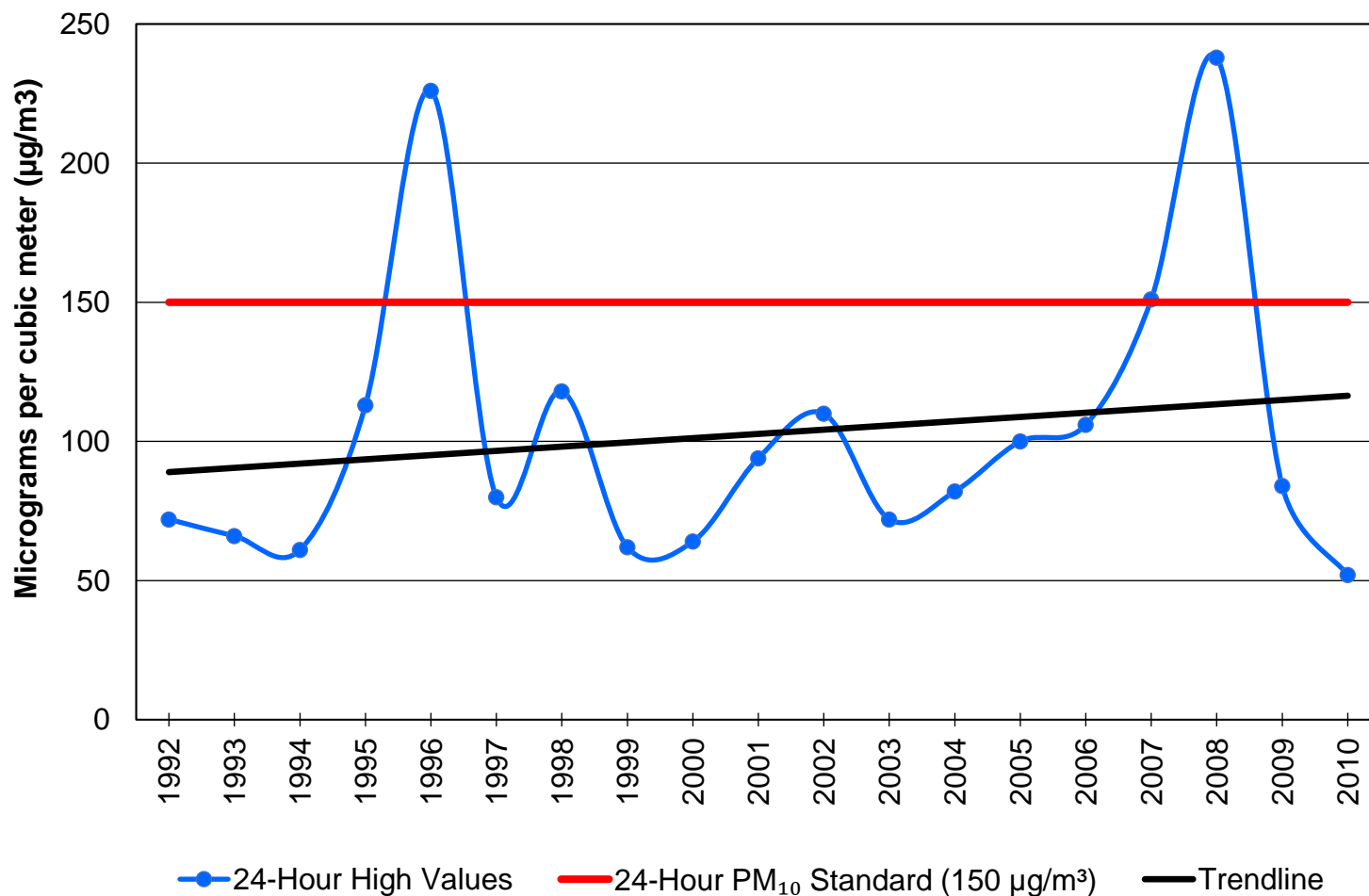
## Annual Arithmetic Mean PM<sub>10</sub> Values Northeast Indiana



In 1987, United States Environmental Protection Agency (U.S. EPA) established an annual coarse particles (PM<sub>10</sub>) standard ([52 FR 24634](#)). The standard was set at 50 micrograms per cubic meter (µg/m³) with the annual arithmetic mean averaged over a 3-year period not to be exceeded. In 2006, U.S. EPA revoked the annual standard, however IDEM continues to monitor for the annual standard in certain regions.

# Particulate Matter

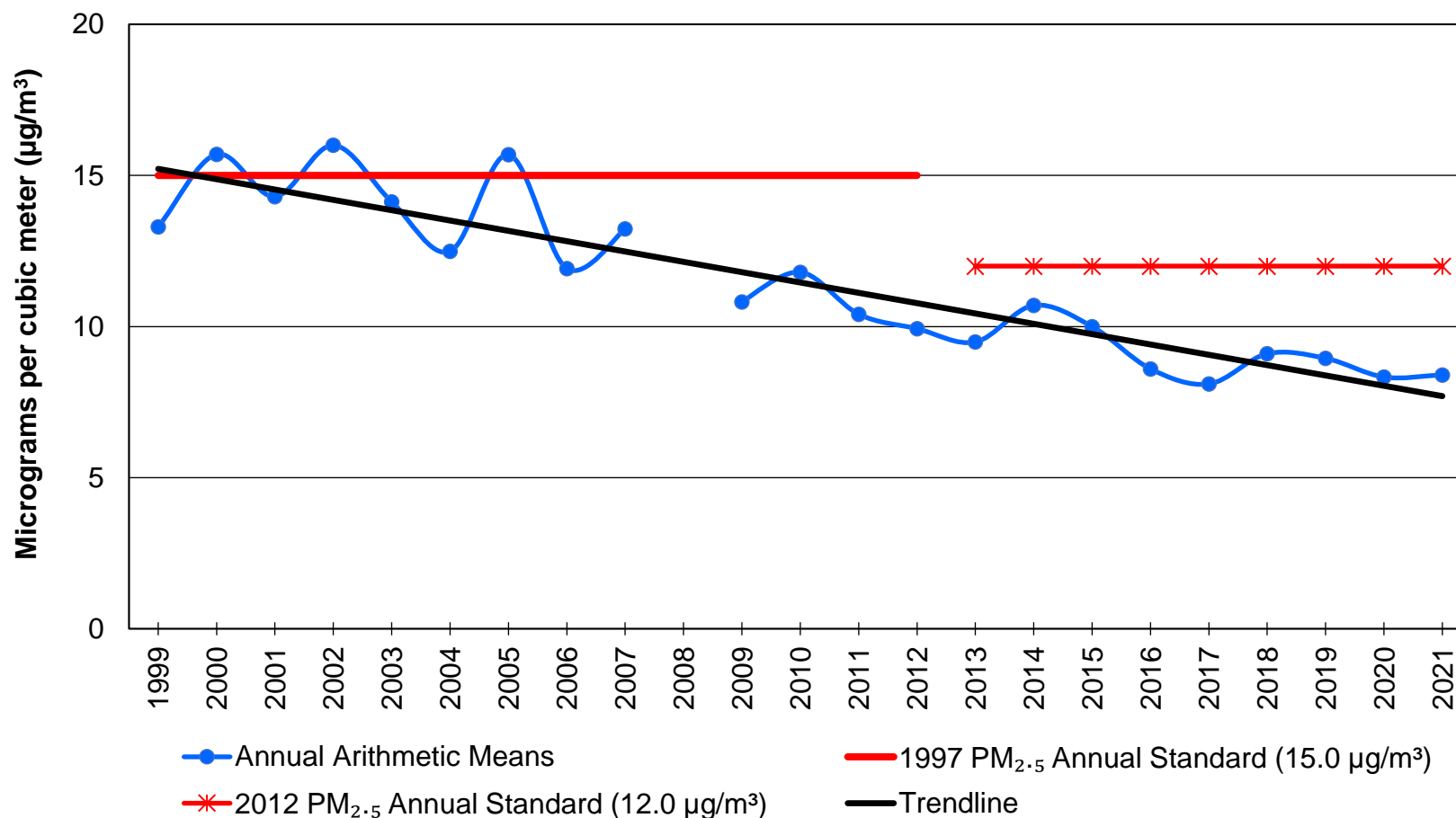
## 24-Hour PM<sub>10</sub> High Values Northeast Indiana



In 1987, United States Environmental Protection Agency (U.S. EPA) established a 24-hour coarse particles (PM<sub>10</sub>) standard ([52 FR 24634](#)). The standard was set at 150 micrograms per cubic meter ( $\mu\text{g}/\text{m}^3$ ) not to be exceeded more than once per year on average over three years.

# Particulate Matter

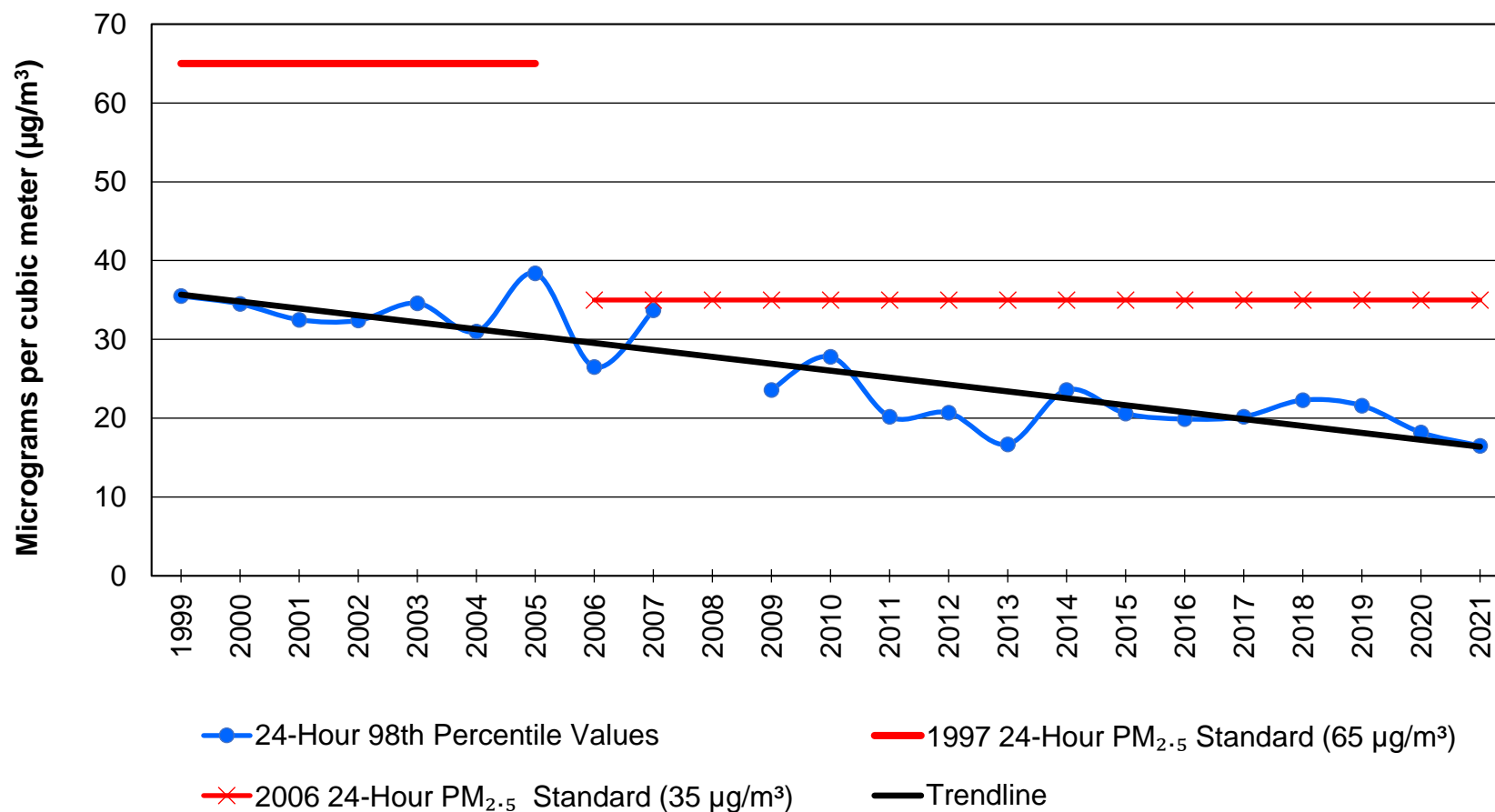
## Annual Arithmetic Mean PM<sub>2.5</sub> Values Northeast Indiana



In 1997, United States Environmental Protection Agency (U.S. EPA) established an annual fine particles (PM<sub>2.5</sub>) standard at 15.0 micrograms per cubic meter (µg/m³) ([62 FR 38652](#)). In 2013, U.S. EPA lowered the standard to 12 µg/m³ ([78 FR 3085](#)). Compliance is determined by evaluating the annual arithmetic mean averaged over a 3-year period not to be exceeded.

# Particulate Matter

## 24-Hour PM<sub>2.5</sub> 98<sup>th</sup> Percentile Values Northeast Indiana



In 1997, United States Environmental Protection Agency (U.S. EPA) established a 24-hour fine particles (PM<sub>2.5</sub>) standard of 65 micrograms per cubic meter (µg/m³) ([62 FR 38652](#)). In 2006, U.S. EPA lowered the standard to 35 µg/m³ ([71 FR 61144](#)). Compliance is determined by evaluating the 98<sup>th</sup> percentile averaged over a 3-year period not to be exceeded.

# Air Quality and You

---

- To learn more about your air quality and what you can do to help, visit:

## Indiana's Smogwatch Air Quality:

[Current Conditions \(in.gov\)](#)

- To acquire additional information about air quality in Indiana and IDEM's role, visit:

[www.idem.IN.gov/airquality](http://www.idem.IN.gov/airquality)

# **Contact Information for IDEM's Office of Air Quality**

---

- To call, please dial:

**(317) 233-0178**

- To write, please use this mailing address:

**IDEM, Office of Air Quality  
100 North Senate Avenue, IGCN 1003  
Indianapolis, IN 46204-2251**