

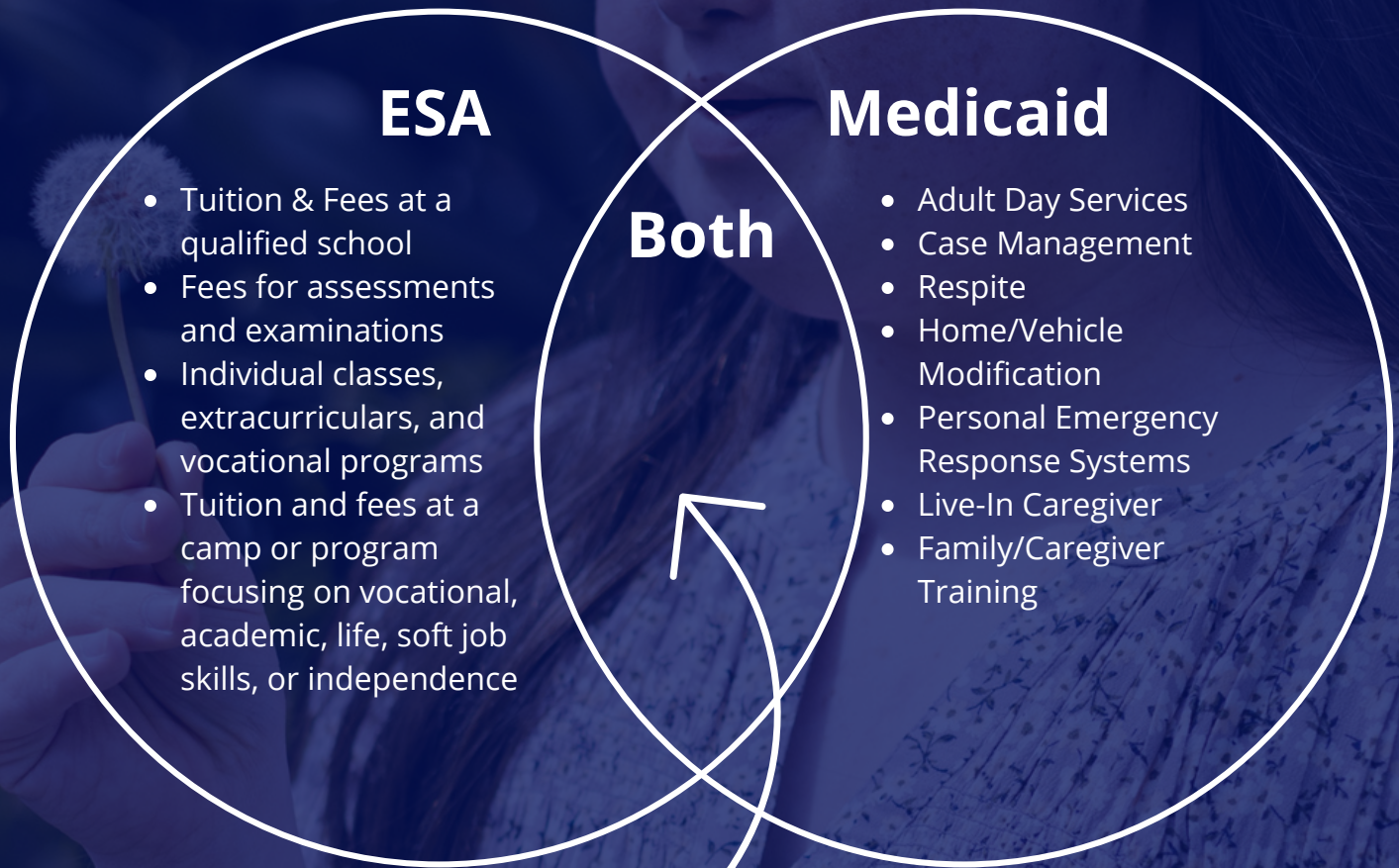
Understanding ESA & Medicaid Waivers

Recipients of a Medicaid waiver may also apply for an Education Scholarship Account (ESA). An ESA may be used to purchase qualified expenses related to education, while a Medicaid waiver is designed to cover other categories of services. An ESA and a Medicaid waiver have some overlap in terms of the services they cover, however they serve different functions when helping your child succeed.

For more information regarding waivers, visit:

<https://www.in.gov/medicaid/members/home-and-community-based-services/>

What is covered?



ESA

- Tuition & Fees at a qualified school
- Fees for assessments and examinations
- Individual classes, extracurriculars, and vocational programs
- Tuition and fees at a camp or program focusing on vocational, academic, life, soft job skills, or independence

Medicaid

- Adult Day Services
- Case Management
- Respite
- Home/Vehicle Modification
- Personal Emergency Response Systems
- Live-In Caregiver
- Family/Caregiver Training

Both

- Behavioral Support Services
- Therapies outlined in IEP/ISP
 - Speech & Language Pathology
 - ABA
 - OT/PT
 - Art & Music Therapy
- Transportation



*** This is not an exhaustive list - please consult your program's case manager with questions. ****