

REGIONAL DEVELOPMENT AUTHORITY

# TDD Steering Committee

**Quarterly Update to Committee**

February 17, 2021

ILLINOIS

INDIANA



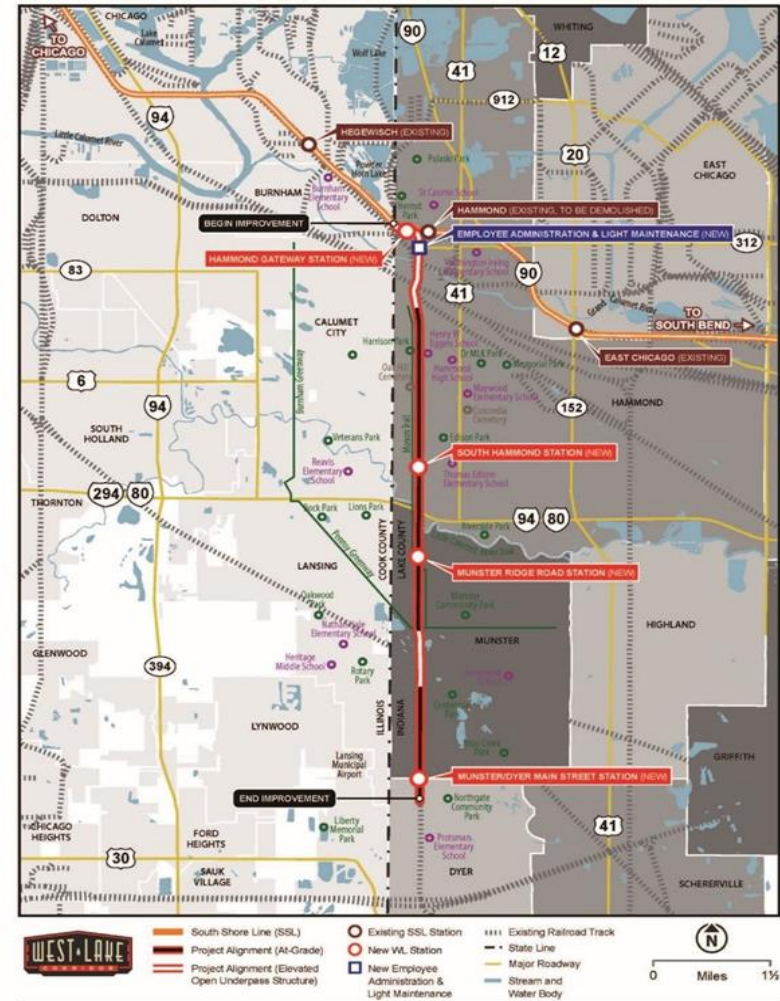
# AGENDA

- Update on the progress of the rail projects
- Update on TDD boundaries and engagement
- Next steps and questions

# RAIL PROJECTS UPDATE

## West Lake Corridor Project

- 9-mile extension to Dyer, Indiana
- First extension of commuter rail in NW Indiana in over a century
- Project Cost: Estimated \$852 million
- NICTD has provided the notice to proceed to design-builder Paschen to begin work on construction of the rail line
- **The FTA has fully executed a FFGA on West Lake and the groundbreaking occurred on October 28, 2020**



# RAIL PROJECTS UPDATE

## Double Track Project

- 25-mile project area, 16 miles new 2nd track, 4 new bridges, 3 new hi-level boarding platforms, 7 new hi-speed crossovers, closing 20 grade X-ings in Michigan City, train/car separation in Michigan City
- Estimated cost: \$454.7 million
- 100% Design for the Double Track project is near complete and real estate acquisition is underway.
- **FTA FFGA on Double Track on January 8, 2021**



# TDD BOUNDARY AND ENGAGEMENT UPDATE

## Status Update

### Public Engagements Completed/Scheduled:

- Munster Ridge Road
- Munster/Dyer Main Street
- Portage/Ogden Dunes
- Gary Miller
- East Chicago (2/18)

### Draft TDD Boundary Presented to Leadership:

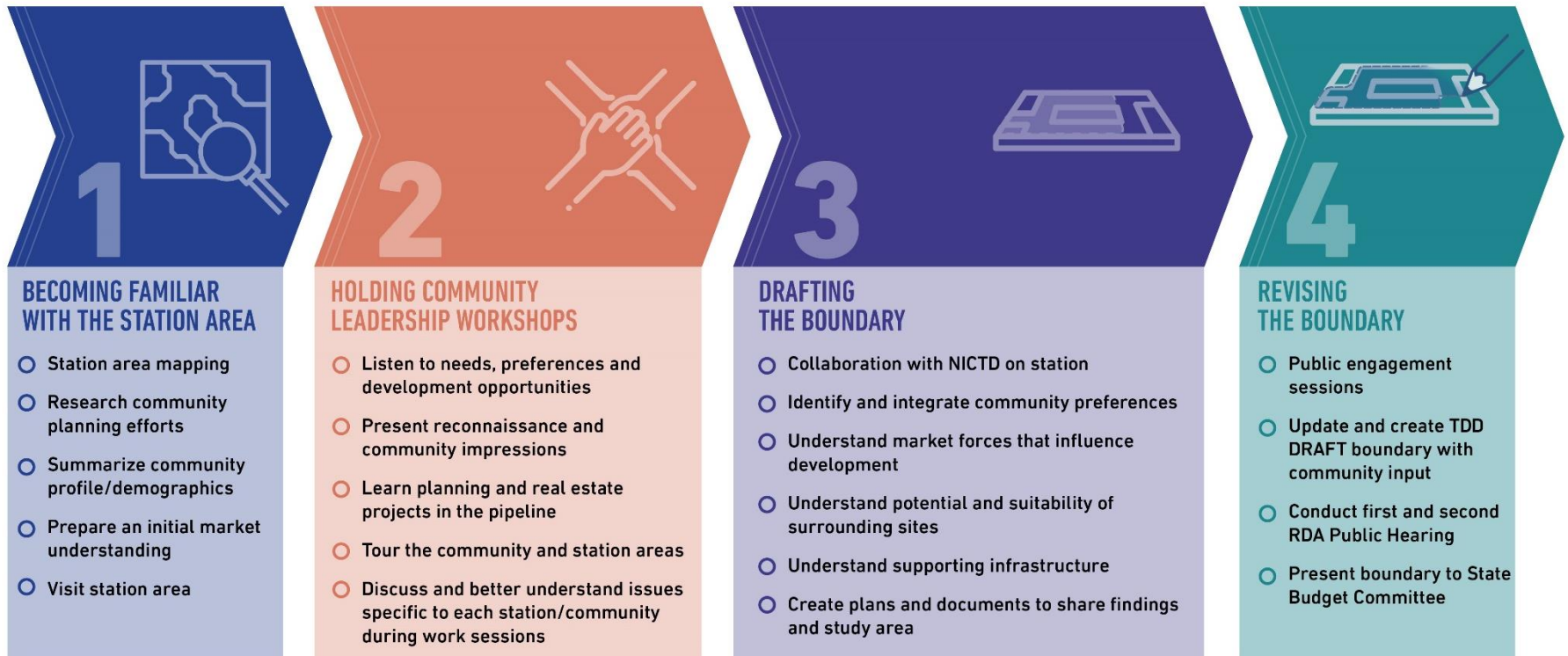
- Hammond Gateway
- Michigan City

### Draft TDD Boundary In-process:

- Beverly Shores
- Dune Park
- Gary Metro
- Hammond South
- Michigan City Carroll Avenue
- South Bend Airport

# TDD BOUNDARY AND ENGAGEMENT UPDATE

## Boundary Definition Process



# TDD BOUNDARY AND ENGAGEMENT UPDATE

Online Engagement – [www.nwitdd.com](http://www.nwitdd.com)

Website Statistics: 3,200 unique visitors/8,600 page views (2/16/2021)



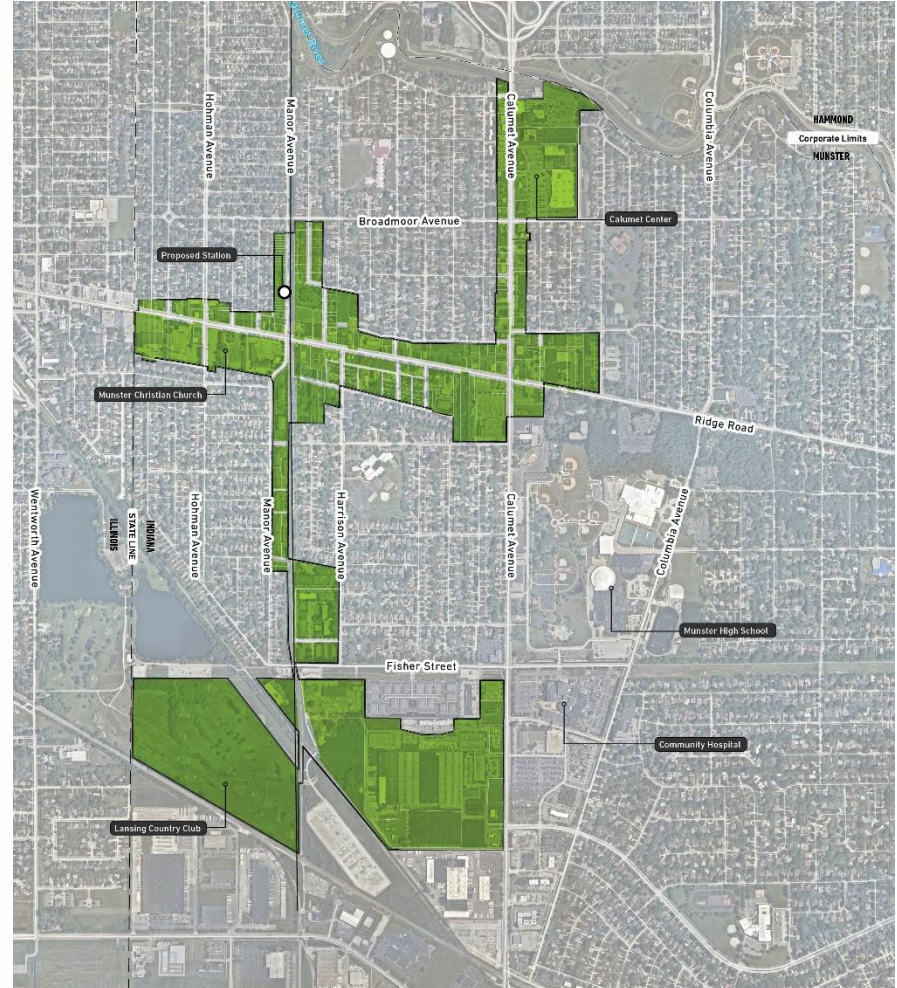
Check out the RDA's Transit Development District Website

# MUNSTER RIDGE ROAD

316.44 acres (boundary defined)

## Input Overview:

- May 2019 – bus tour and leadership work session
- Spring-fall, 2020 - leadership briefings
- November-December 2020 - on your own gallery (17 survey respondents)
- November 2020 – virtual public engagement (30 Zoom/Facebook and 102 YouTube video hits)
- Winter 2020 – coordination on Ridge Road/Calumet Avenue streetscape
- December 2020 – boundary feedback session with Munster leadership (boundary adjustments made)



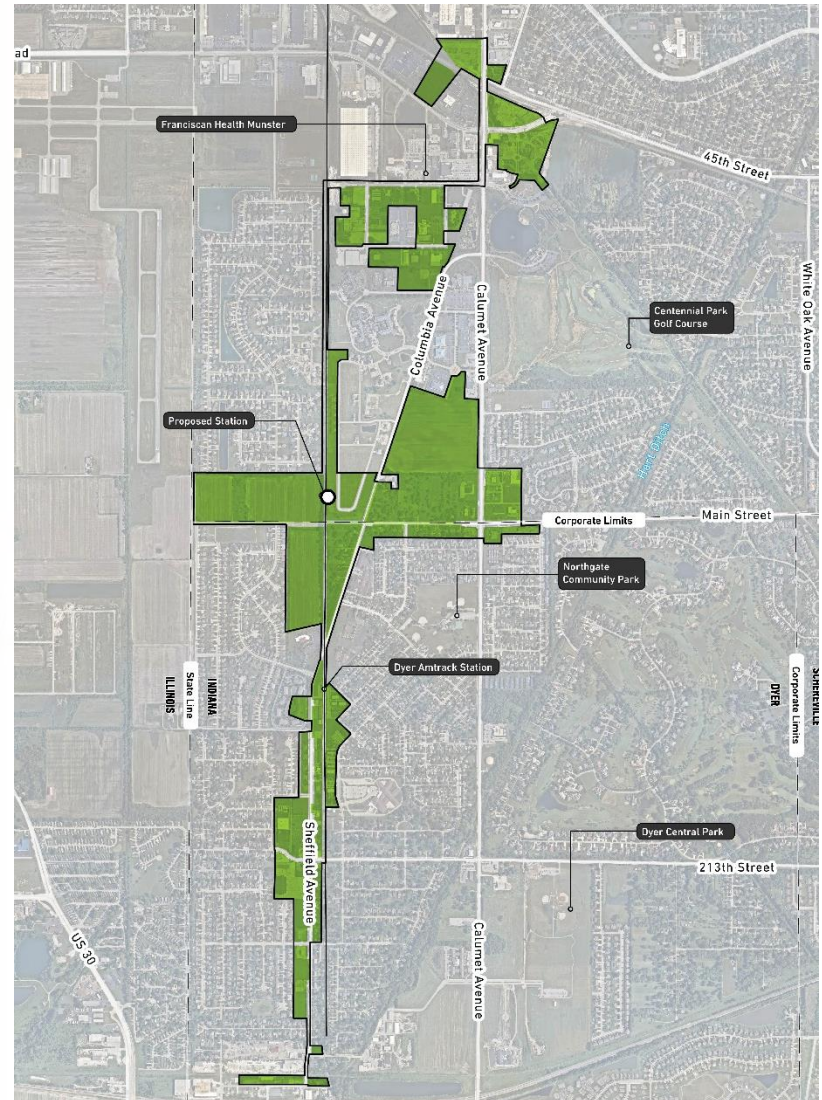


# MUNSTER/DYER MAIN STREET

**316.2 acres (boundary defined)**

## Input Overview:

- May 2019 – bus tour and leadership work session
- September 2019 - joint development work session with NICTD
- Spring-fall, 2020 - leadership briefings
- November-December 2020 - on your own gallery (58 survey respondents)
- December 2020 – virtual public engagement (102 Zoom/Facebook and 15 YouTube video hits)
- December 2020 – boundary feedback session with Munster and Dyer leadership (boundary adjustments made)



# PORTAGE/OGDEN DUNES

## 312.7 acres -14.9 Ogden Dunes (draft boundary being finalized)

### Input Overview:

- March 2020 – tour and leadership work session
- Summer-fall 2020 – NICTD parking lot coordination
- Spring-winter 2020 - leadership briefings
- December 2021 – Ogden Dunes virtual public engagement (31 Zoom, 125 Facebook, and 20 YouTube video hits)
- February 2021 – Portage virtual public engagement (32 Zoom, 115 Facebook, and 29 YouTube video hits)
- February 2021 - on your own gallery (gallery open)
- February 2021 – boundary feedback session completed

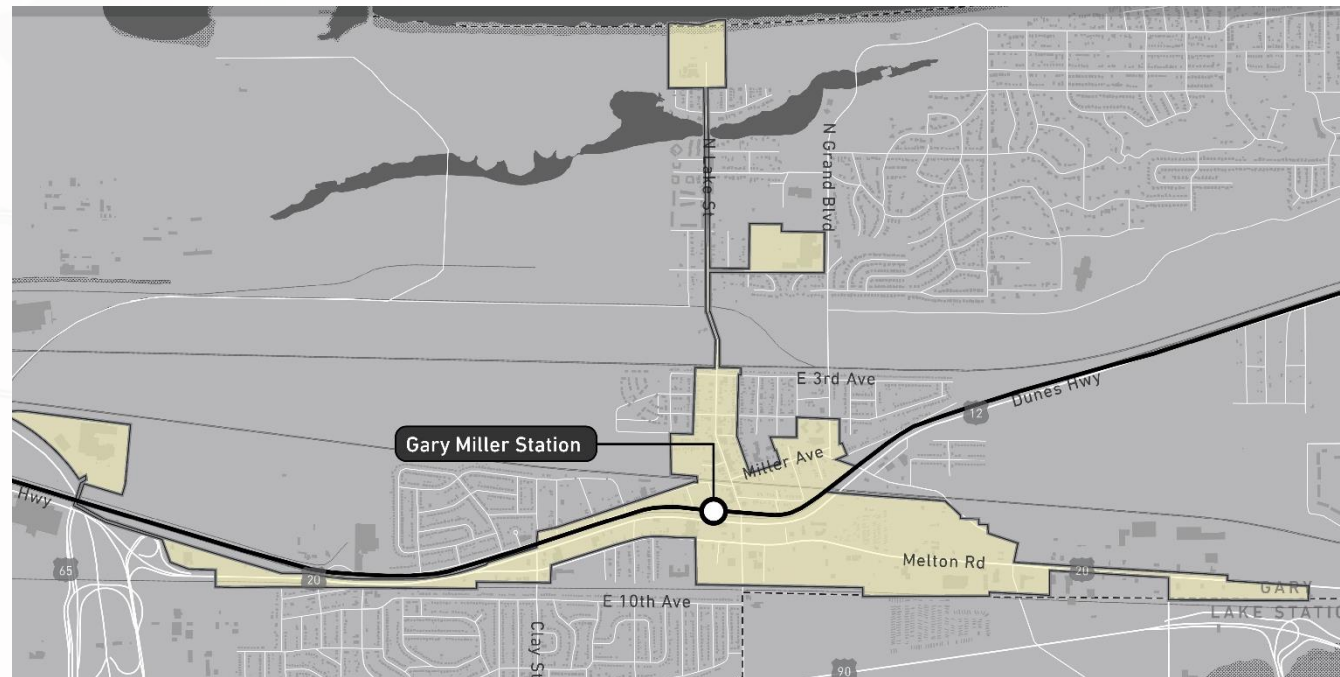


# GARY MILLER

## 355 acres (draft boundary tested with public)

### Input Overview:

- March 2020 – tour and leadership work session
- Spring-winter 2020 - leadership briefings
- February 2021 – Miller virtual public engagement (40 Zoom, 78 Facebook hits)
- February 2021 - on your own gallery (gallery open)
- Upcoming – boundary feedback session

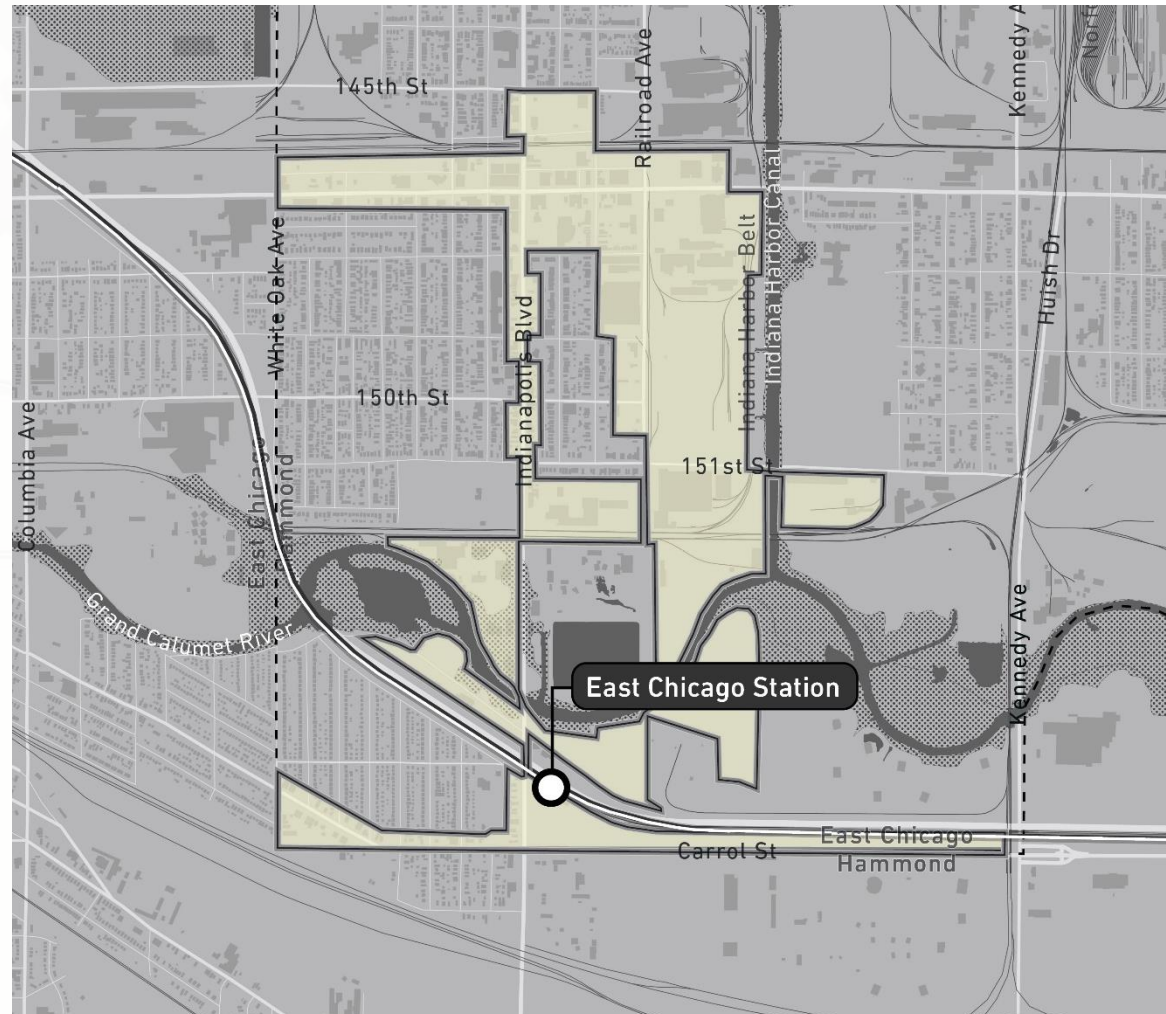


# EAST CHICAGO

367 acres (draft boundary being finalized)

## Input Overview:

- January 2020 – tour and leadership work session
- Spring-winter 2020 - leadership briefings
- **February 18th 2021** – East Chicago virtual public engagement (meeting information on [NWITDD.com](http://NWITDD.com))
- February 2021 - on your own gallery
- Upcoming – boundary feedback session



# NEXT STEPS AND QUESTIONS

## Current and upcoming boundary work

### Hammond Gateway and Michigan City:

- Working with leadership on boundary revisions and preparing for public input session

### Beverly Shores, Dune Park, Hammond South, Gary Metro, and South Bend :

- Boundary analysis and community leadership discussions ongoing

