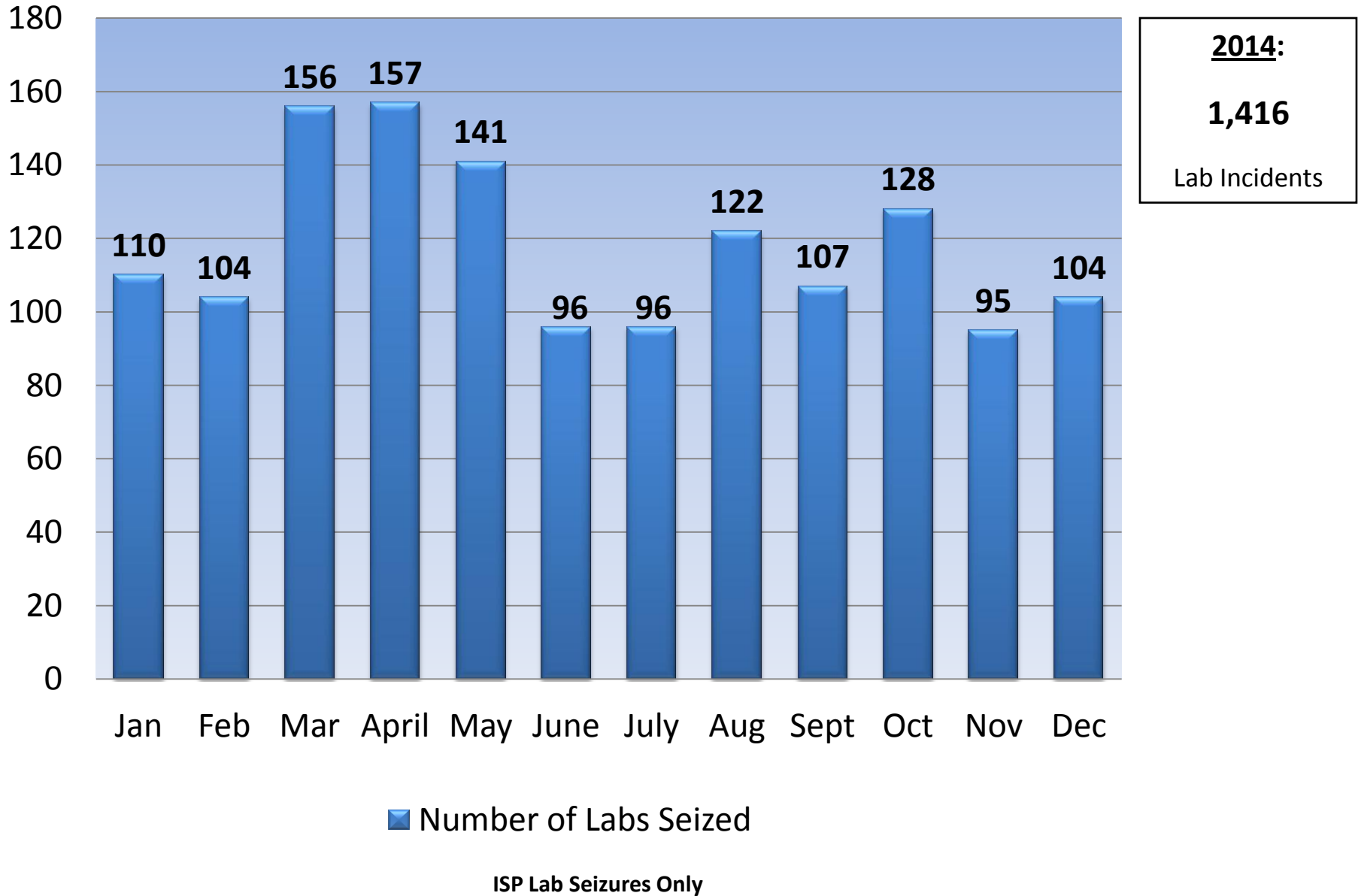
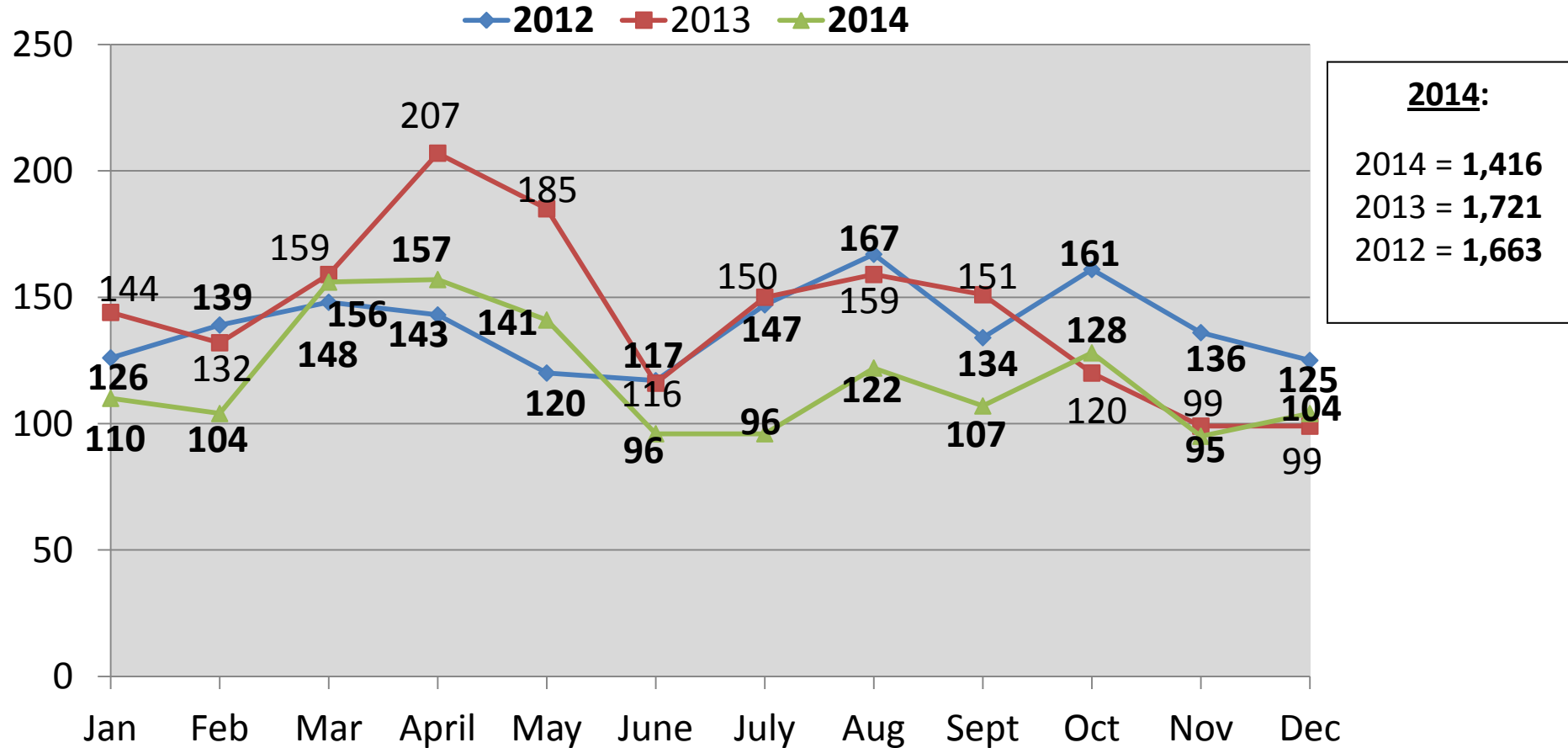


Indiana State Police Clandestine Lab Incidents 2014

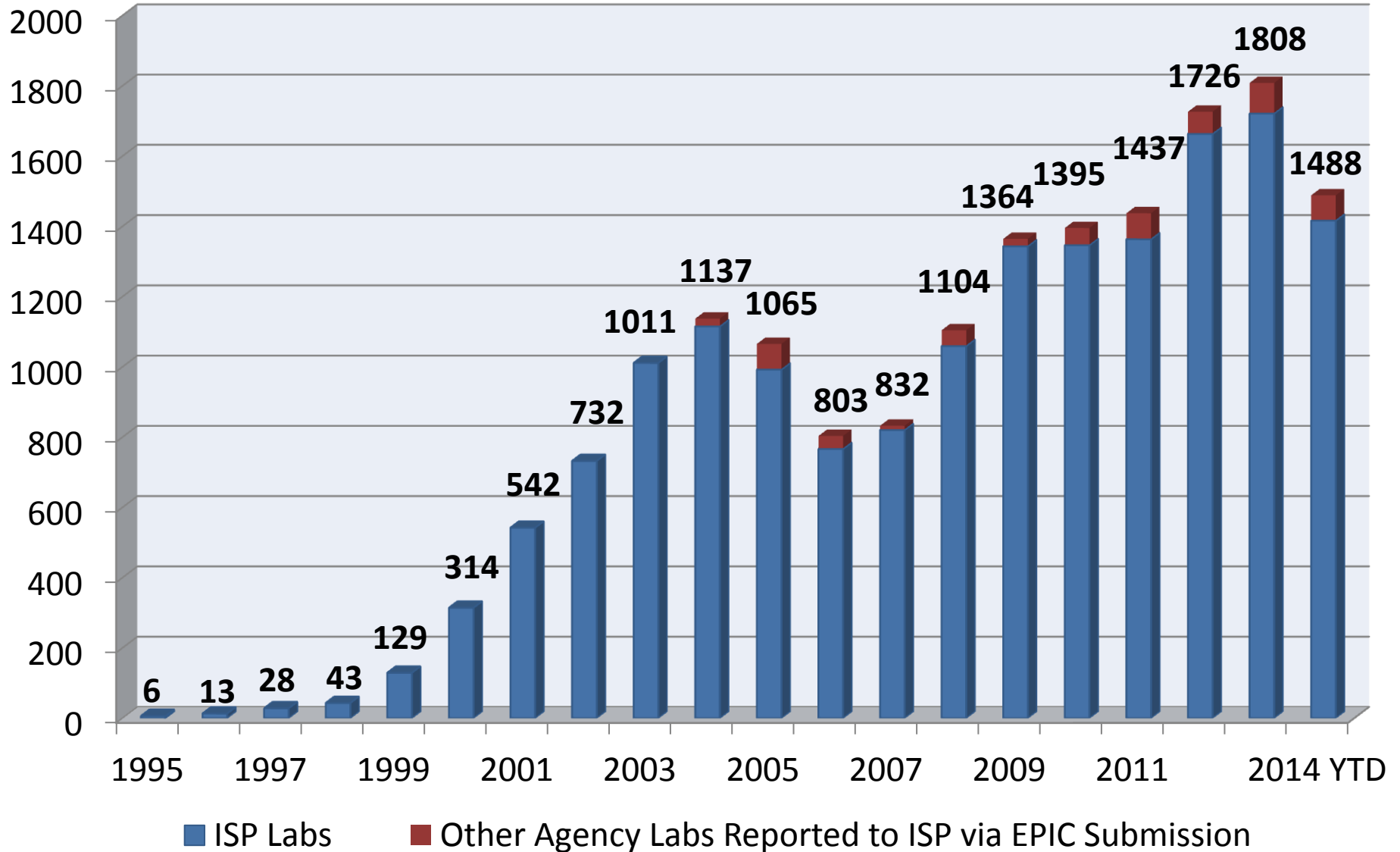


Annual Comparison ISP Clandestine Lab Incidents 2012 – 2014



Percent Change Year-to-Date, **2012 to 2013** = **+3.48%**
 Percent Change Year-to-Date, **2013 to 2014** = **-17.72%**
 Percent Change Year-to-Date, all years shown (**2012 to 2014**) = **-14.85%** **ISP Lab Seizures Only**

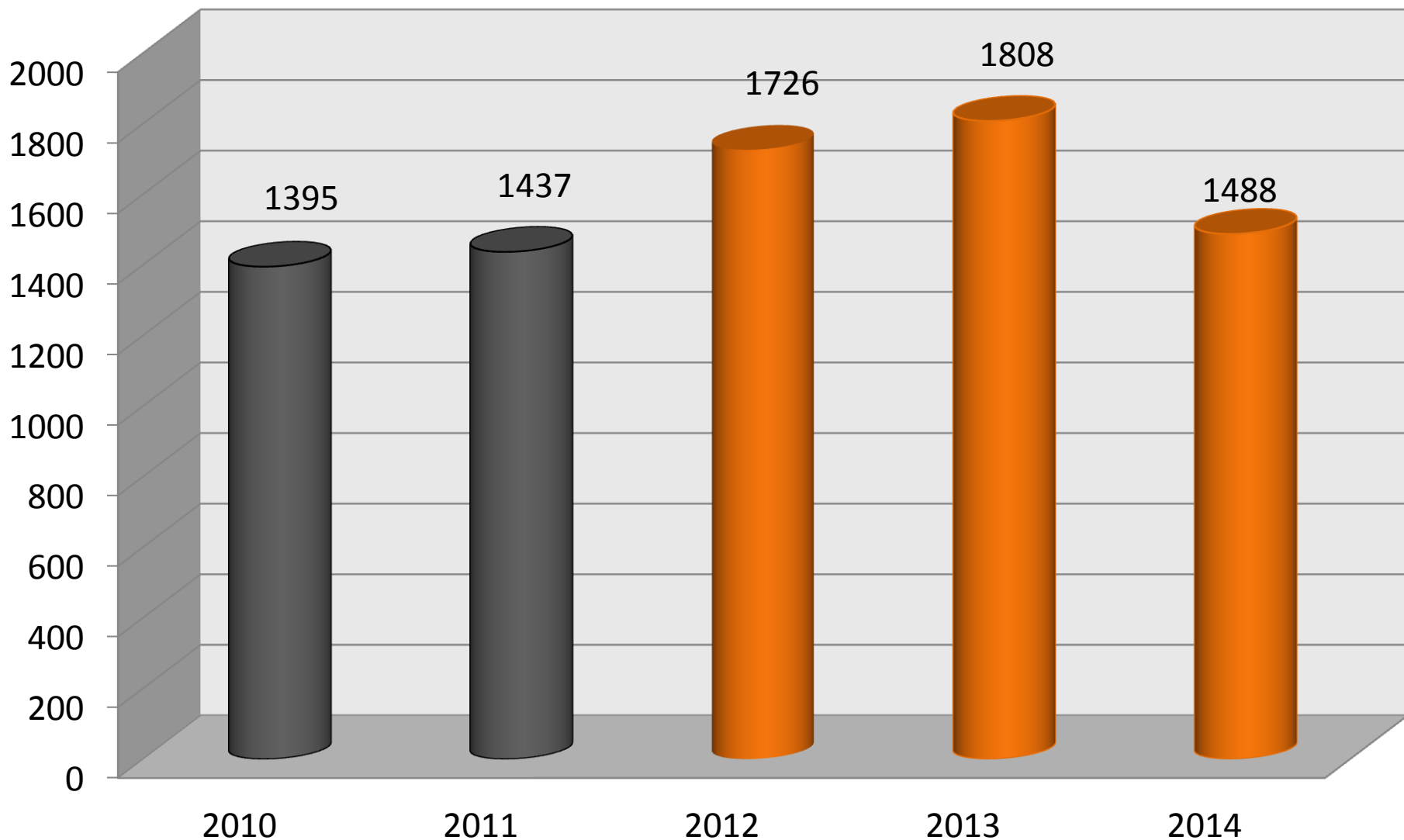
Indiana Law Enforcement Clandestine Lab Incidents 1995 - 2014



All Agencies' lab seizures

Comparison of Lab Seizures:

Pre-tracking of PSE in 2010 & 2011 to NPLeX PSE block sale system tracking 2012 -2014



NPLeX fully implemented 1-1-2012

All Agencies' lab seizures

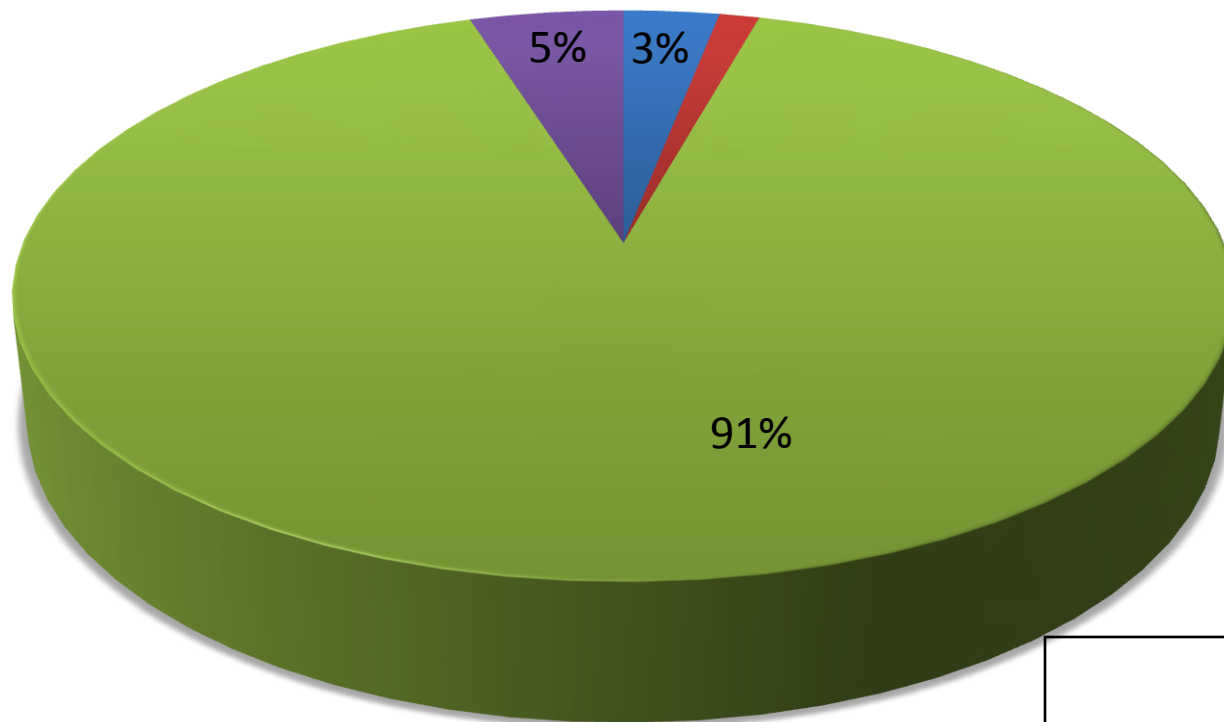
Indiana State Police Lab Seizure Type 2014

■ Birch Reduction (Nazi)

■ Red Phosphorus

■ One Pot

■ Other/Unk



2014:

Birch Reduction – 43

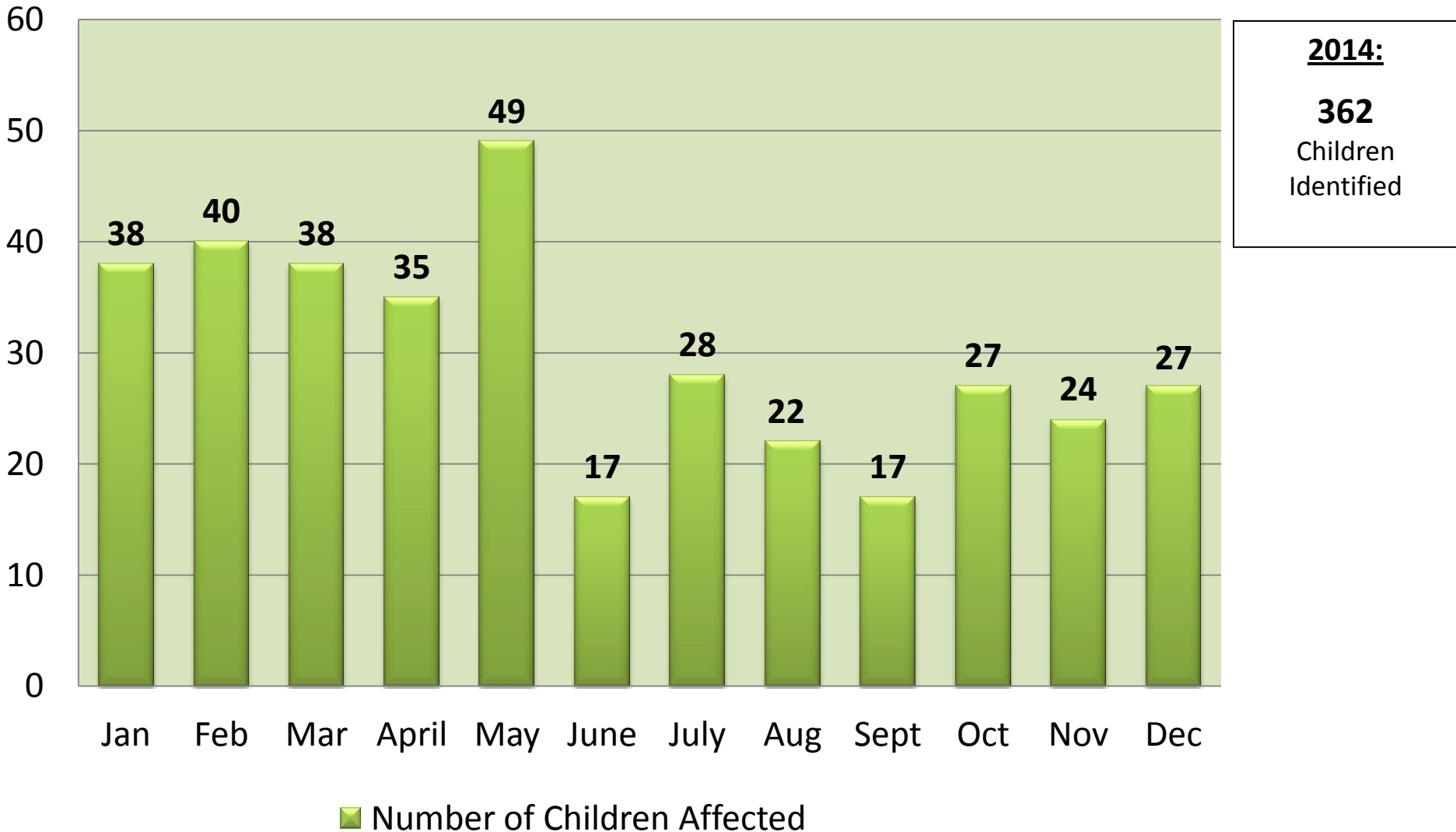
Red Phosphorus – 18*

One Pot – 1,289*

Other/Unknown – 69

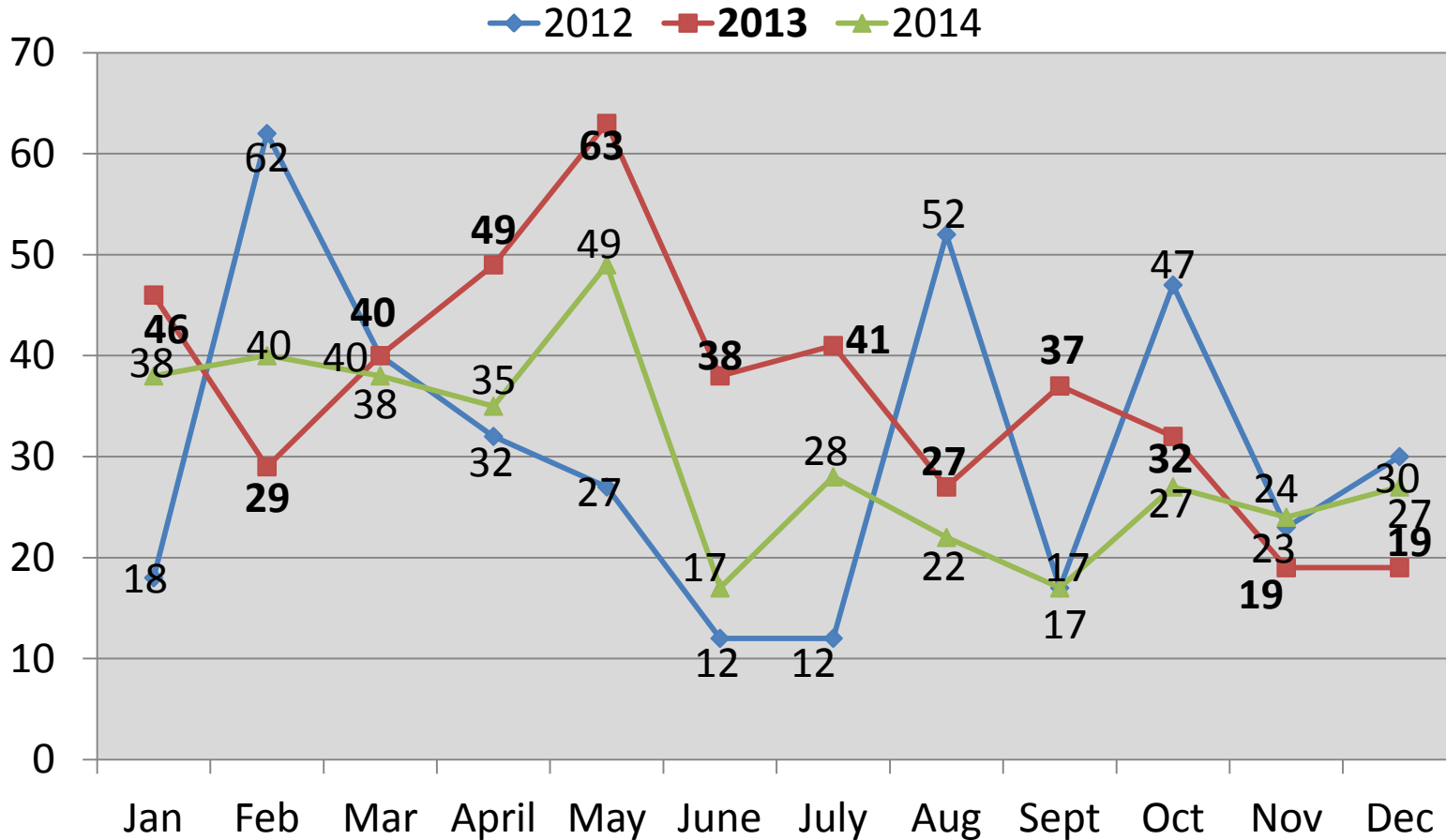
*labs seized with more than one cook process

Indiana State Police Children Identified in Clandestine Lab Environments 2014



ISP Lab Seizures Only

Annual Comparison ISP Children Indentified in Clandestine Lab Environments 2012 – 2014

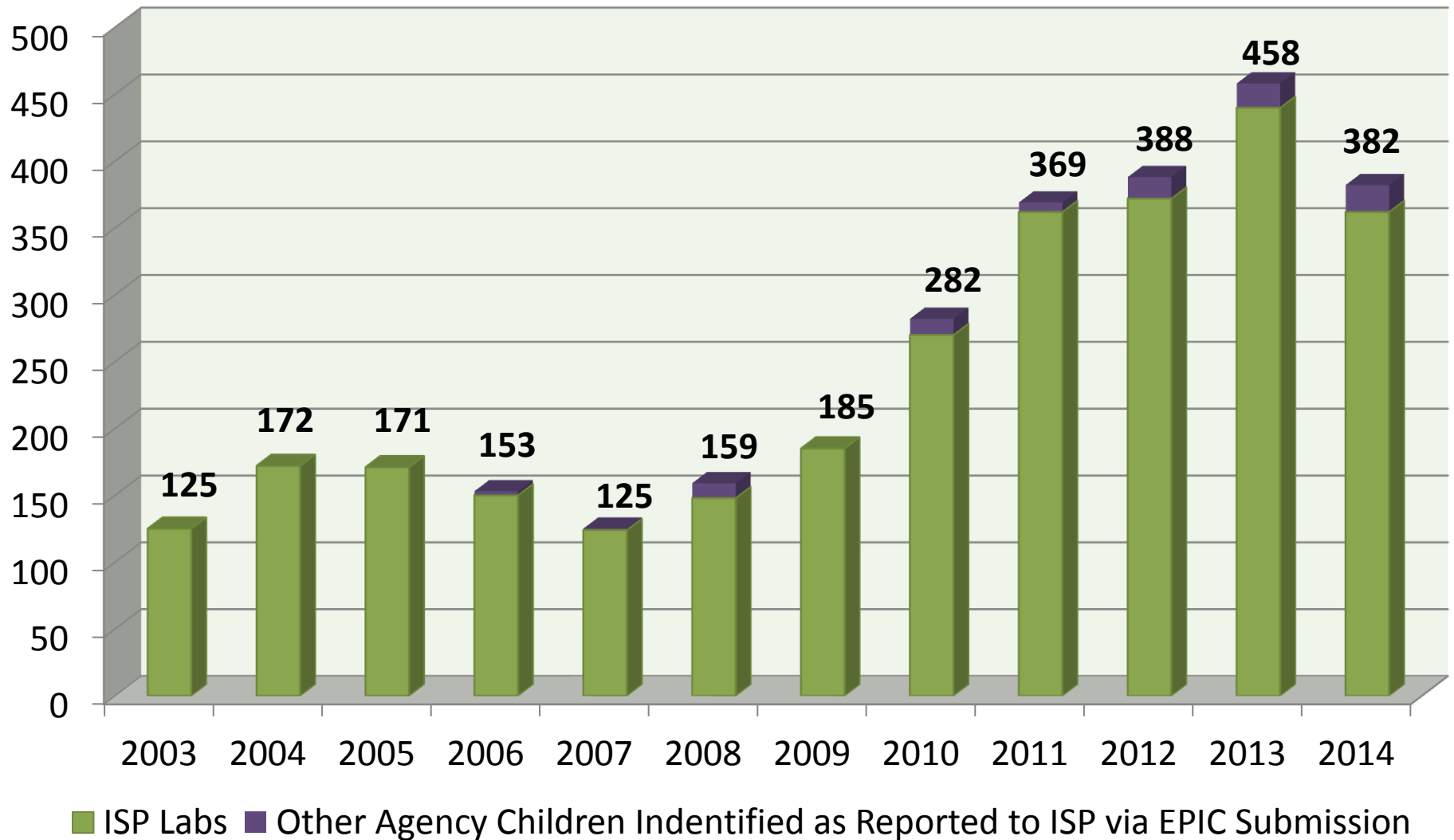


2014:
 2014 = **362**
 2013 = **440**
 2012 = **372**

Percent Change Year-to-Date, **2012 to 2013** = **+18.27%**
 Percent Change Year-to-Date, **2013 to 2014** = **-17.72%**
 Percent Change Year-to-Date, all years shown (**2012 to 2014**) = **-2.68%**

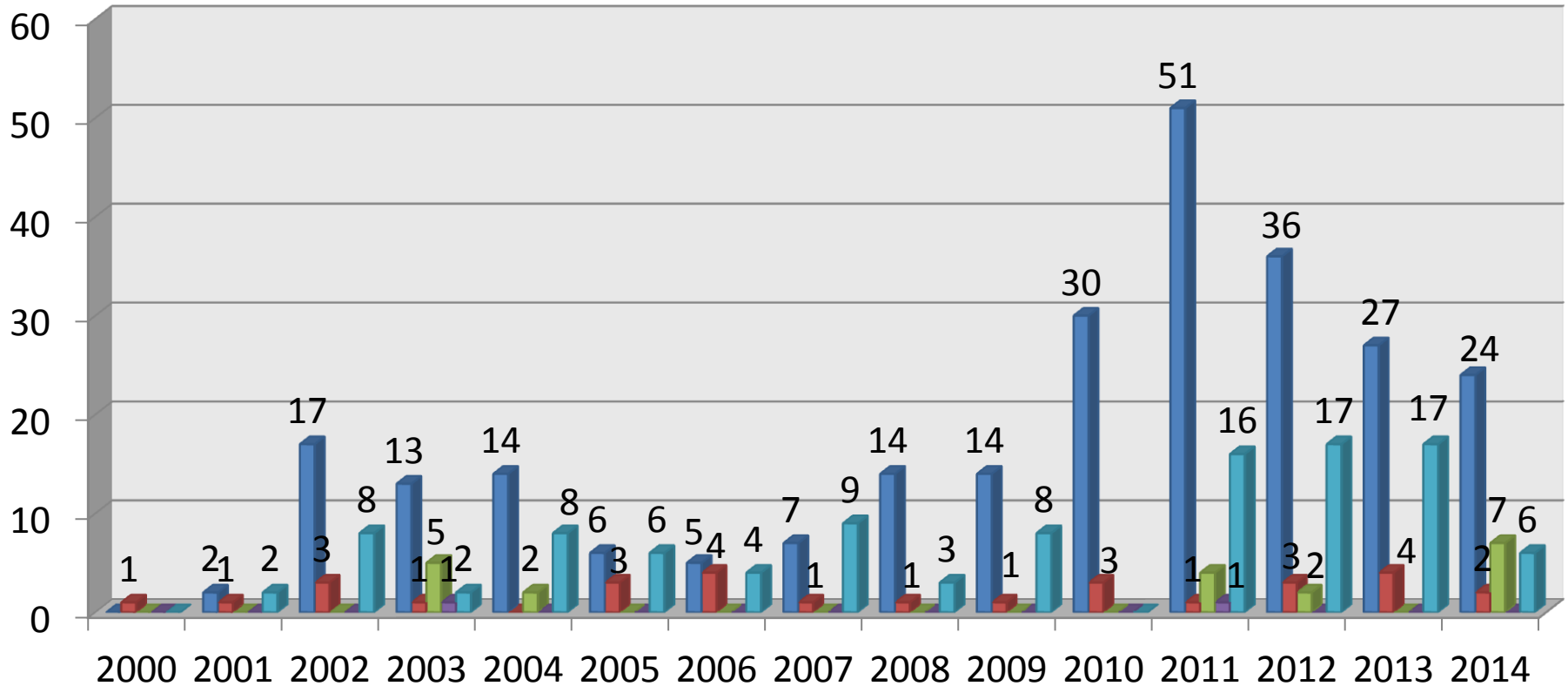
ISP Lab Seizures Only

Indiana Law Enforcement Children Identified in Clandestine Lab Environments 2003 - 2014



Indiana Meth Lab Injuries and Deaths 2000 - 2014

■ Adults Injured
 ■ Adult Deaths
 ■ Children Injured
 ■ Child Deaths
 ■ LE Injured



Adult Injuries:

260 total

Law Enforcement Injuries:

106 total

All Agencies' lab seizures

Adult Deaths (29):

- Police Action Shooting: 4
- Pursuit Crash: 2
- Car Crash: 1
- Suicide: 4
- Fire/Explosion: 10
- Homicide: 3
- One Pot Explosion(no fire): 1
- Overdose: 1
- Other: 3

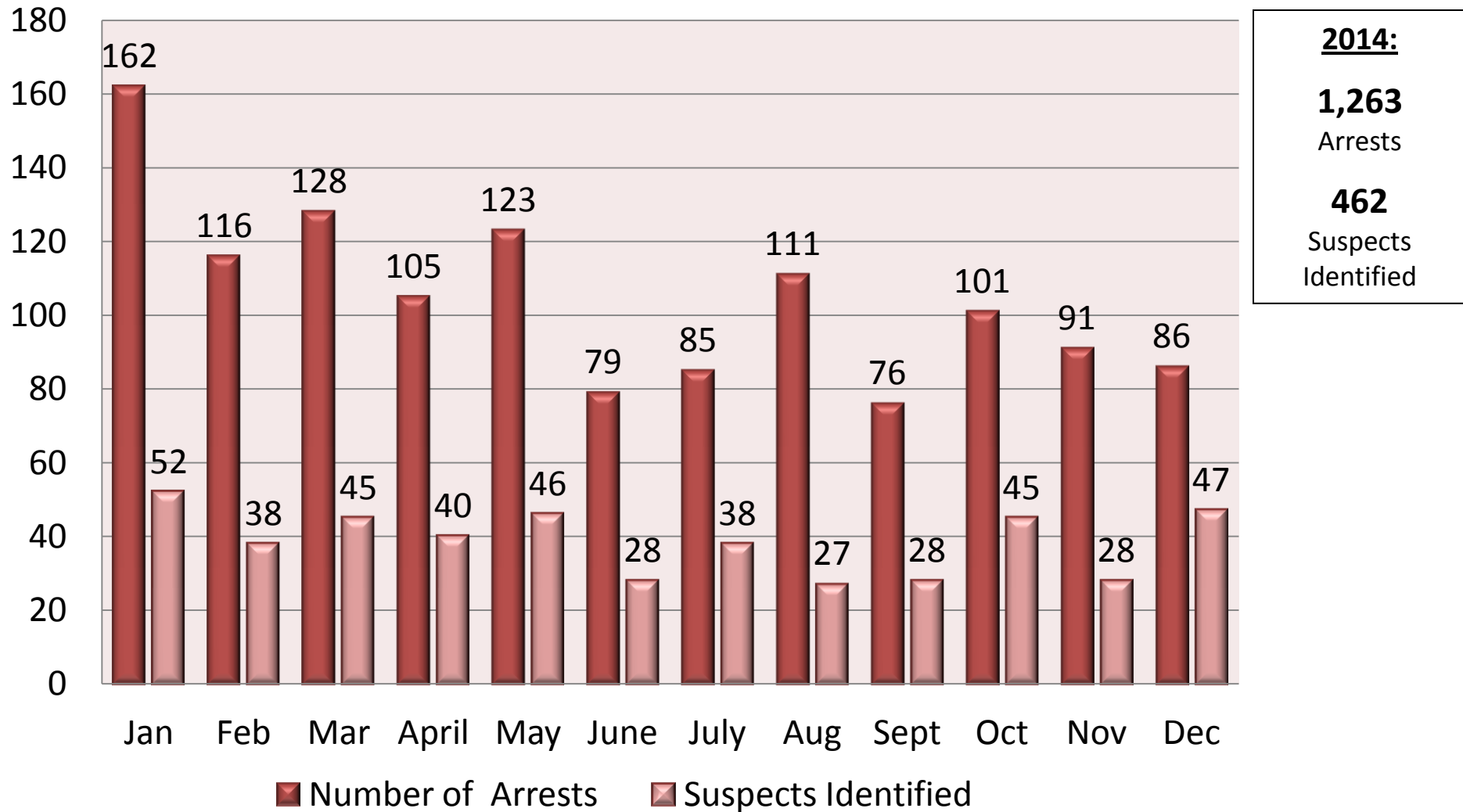
Child Deaths (2):

- Fire: 1
- Medical/Health: 1

Child Injuries (20):

- Fire: 7
- Chemical Burns: 1
- Exposure to Chemical Vapors: 9
- Swallowed Chemical: 3

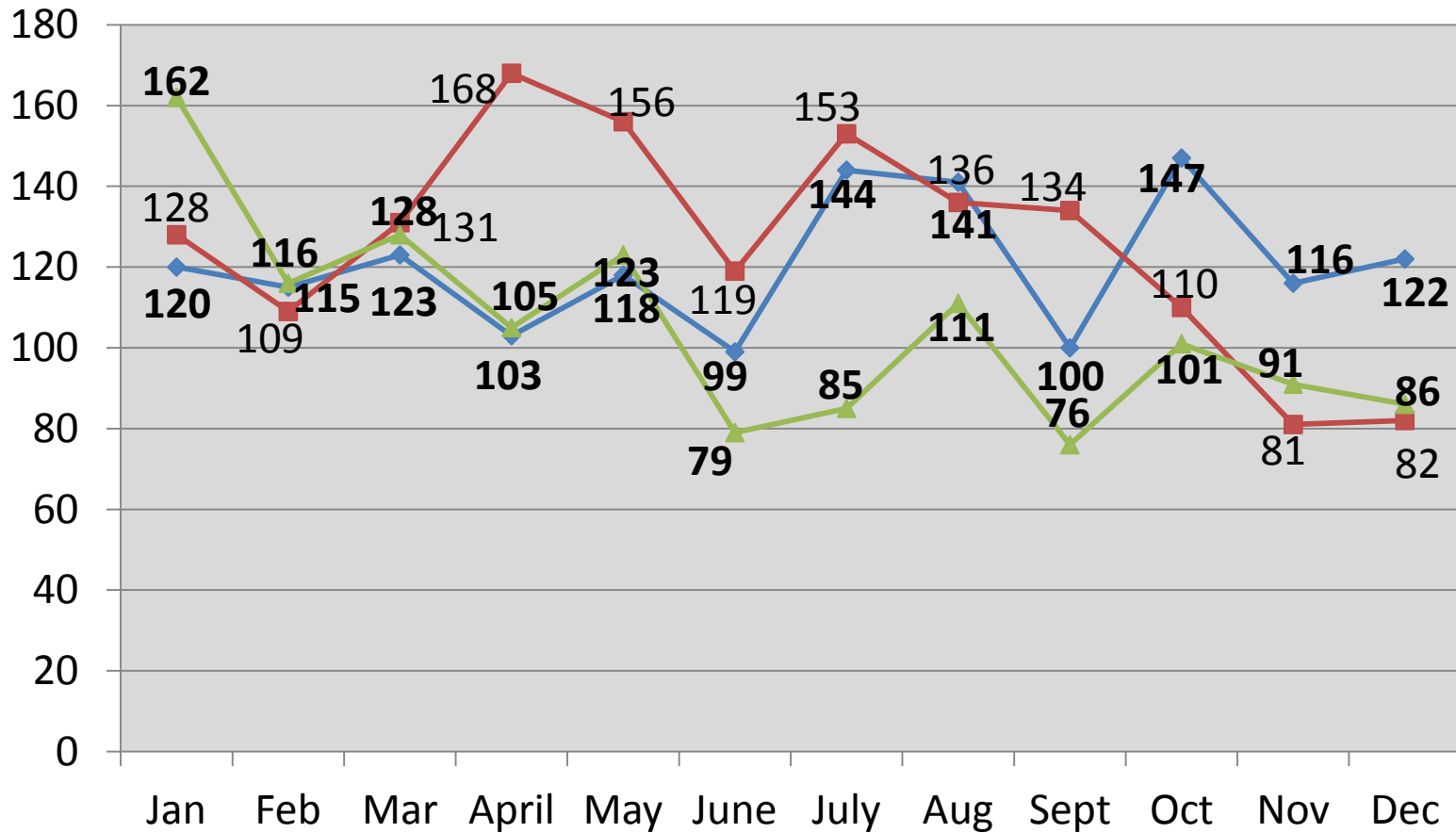
Indiana State Police Clandestine Lab Arrests & Suspects Identified But Not Arrested at Time of Lab - 2014



Annual Comparison ISP Clandestine Lab Arrests

2012 – 2014

◆ 2012 ■ 2013 ▲ 2014



2014:

2014 = **1,263**

2013 = **1,507**

2012 = **1,448**

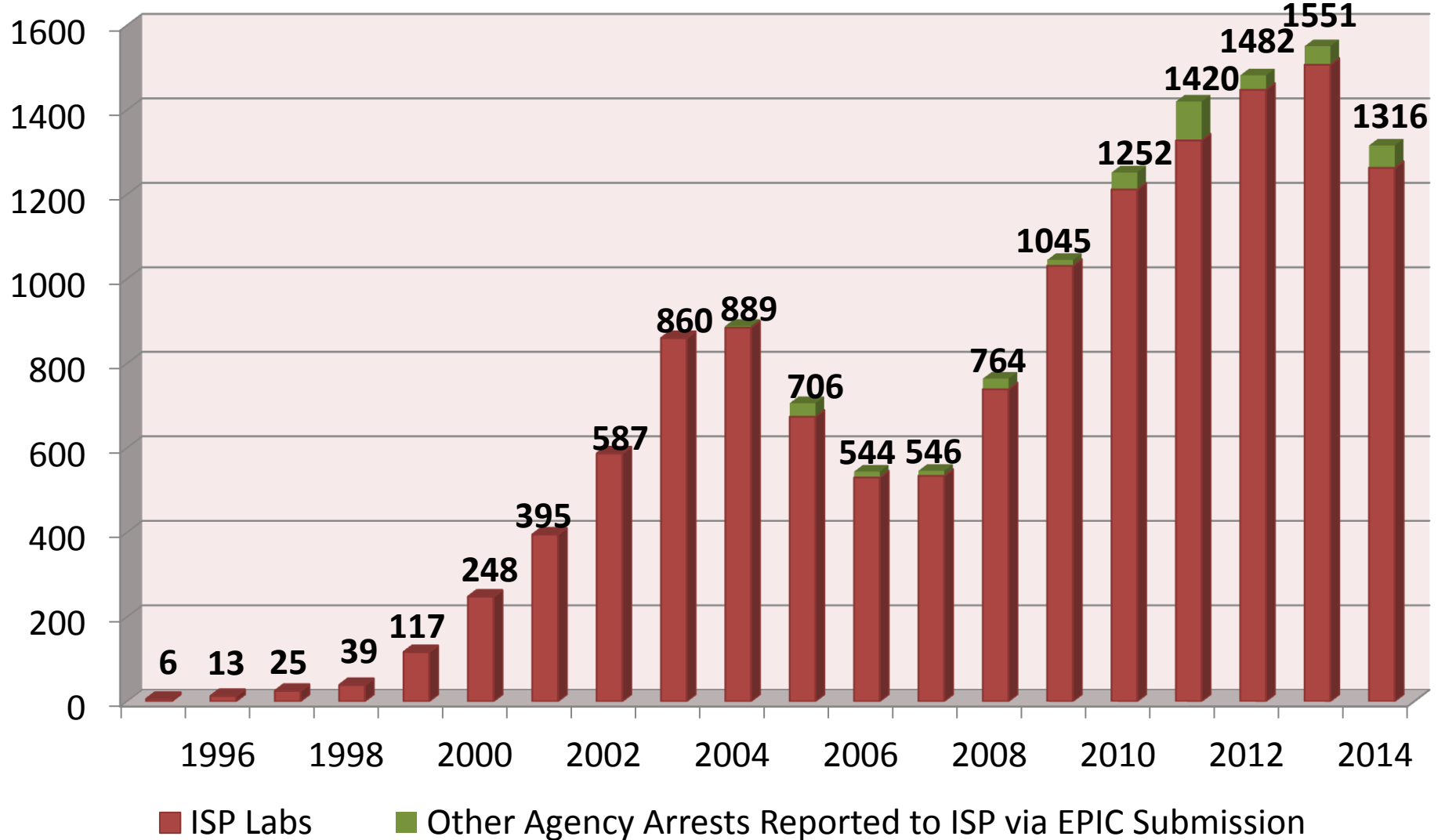
Percent Change Year-to-Date, **2012** to **2013** = **+4.07%**

Percent Change Year-to-Date, **2013** to **2014** = **-16.19%**

Percent Change Year-to-Date, all years shown (**2012** to **2014**) = **-12.77%**

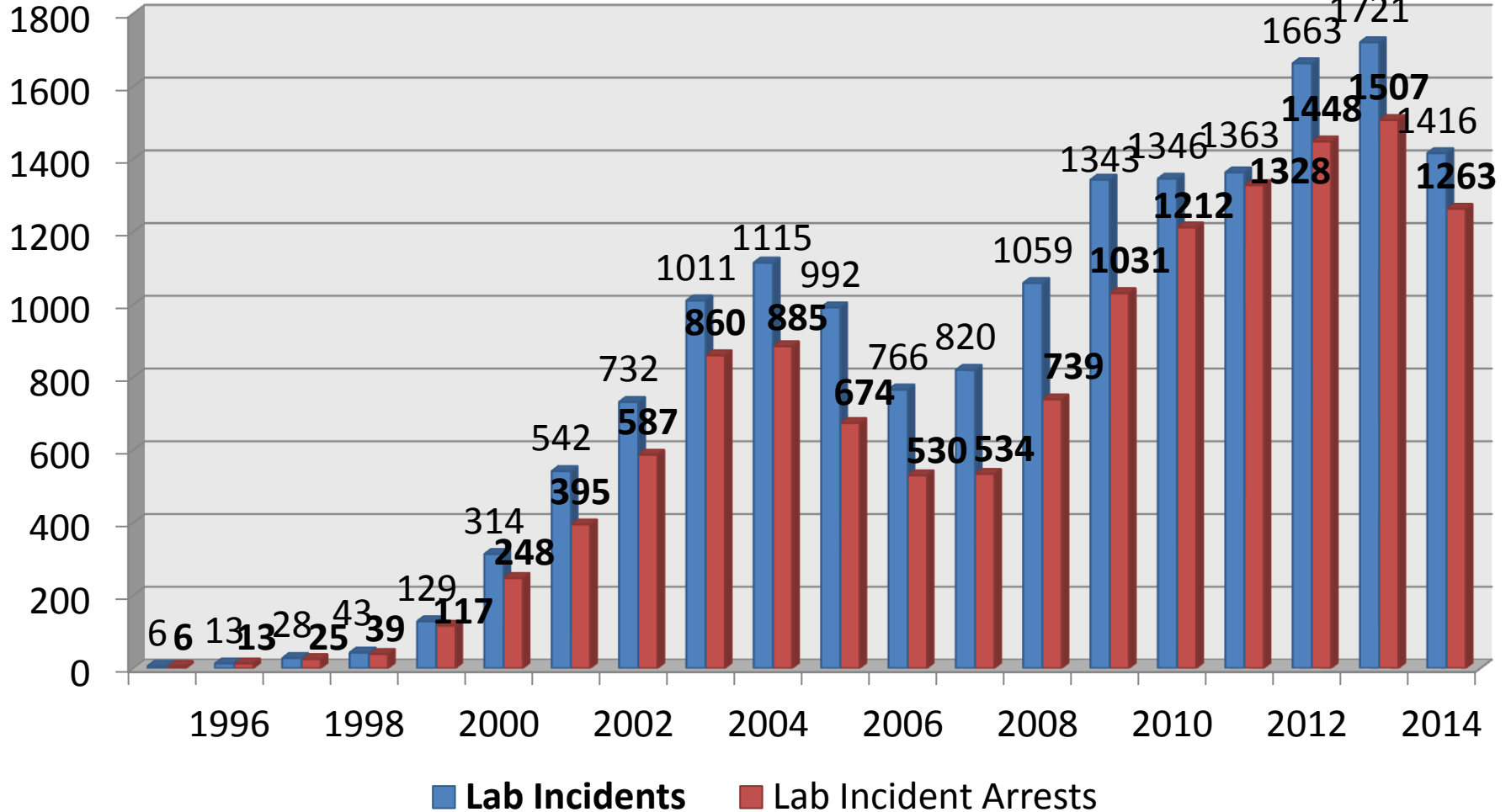
ISP Lab Seizures Only

Indiana Law Enforcement Clandestine Lab Arrests 1995 – 2014



All Agencies' lab seizures

Annual Comparison Lab Incidents & Lab Arrests 1995 - 2014



Average arrest rate of lab seizures - 1995-2014 = 83%