



energyfuturesgroup.com

Modeling EE in Indiana IRPs

Anna Sommer

August 19, 2021

Evolution of EE Modeling in Indiana

- Predetermined level of savings fixed in IRP modeling
- Now EE is a selectable resource
- Grouping of that EE happens by cost, load shape, value, or portfolio
 - Indiana Code § 8-1-8.5-10(j) requires that a DSM Plan “be consistent with...the electricity supplier’s most recent long range integrated resource plan submitted to the commission.”
 - Achieving consistency is only possible if the DSM inputs to the IRP are also consistent with the manner in which a DSM portfolio is constructed and delivered.
 - Grouping DSM inputs into value-based bins is inconsistent with DSM portfolios that include a diverse set of programs, measures, and customer types with varying degrees of cost effectiveness.

Some Best Practice Recommendations for Indiana IRPs

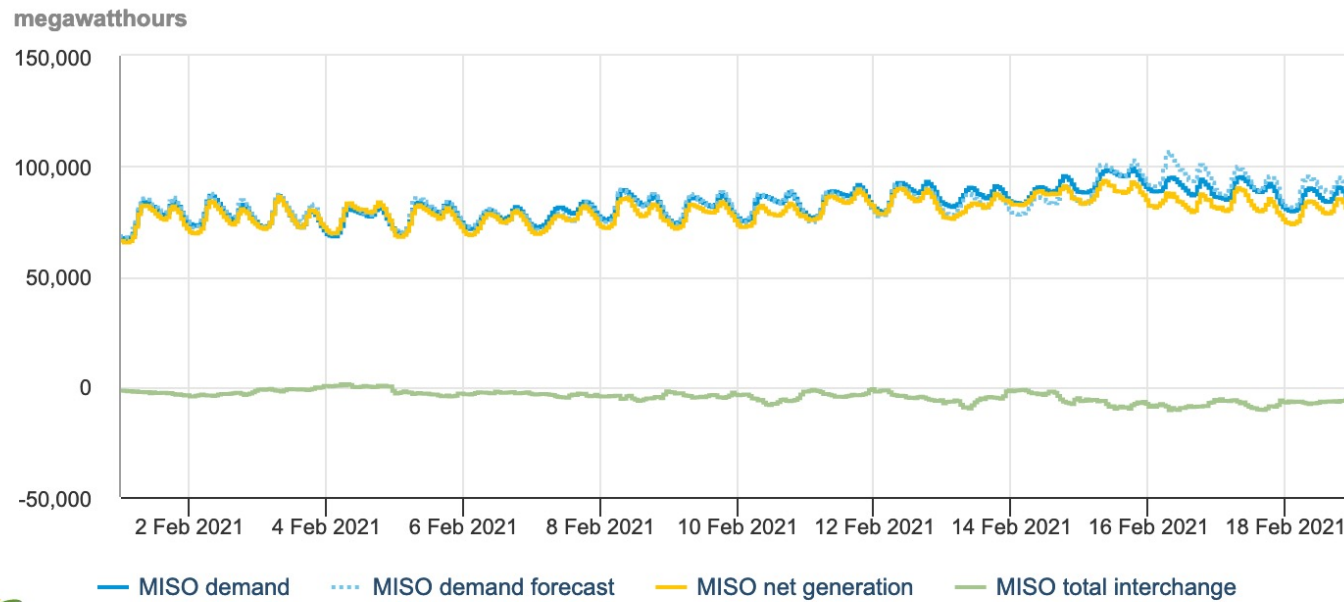
- Keep the number of bundles small and the grouping simple
- Group EE by portfolio
 - If model does not select EE you may need to weed out more expensive programs like behavioral EE
- Reduce program costs by co-benefits that can't be explicitly represented in IRP model, e.g. avoided transmission and distribution costs
- Convert savings at the meter to savings at the generator using marginal line losses
- Levelized program costs – as-spent dollars will present an end-effects issue

Future Improvements for EE Modeling in IRPs

- Refine load shapes used, often a handful of load shapes are used to characterize many measures
- Account for value of EE under extreme weather conditions

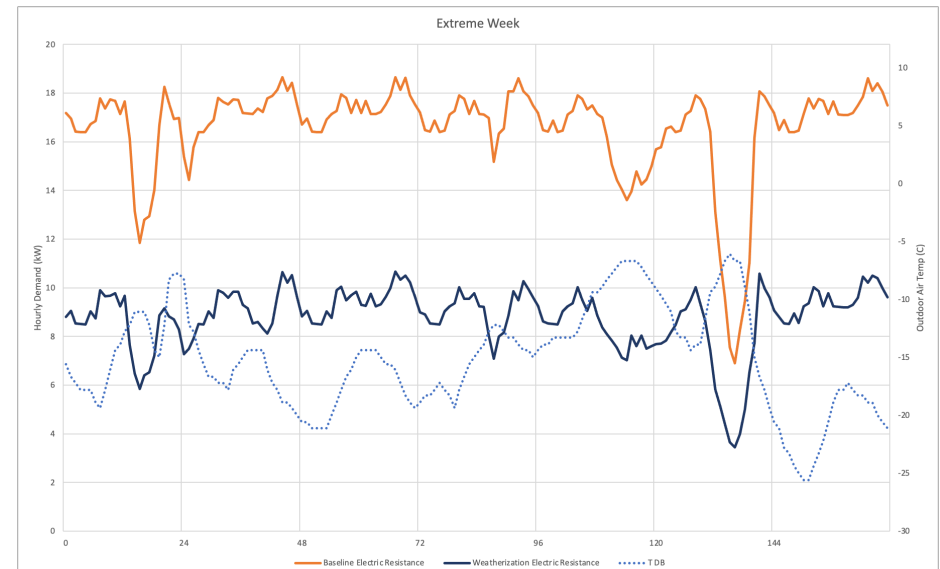
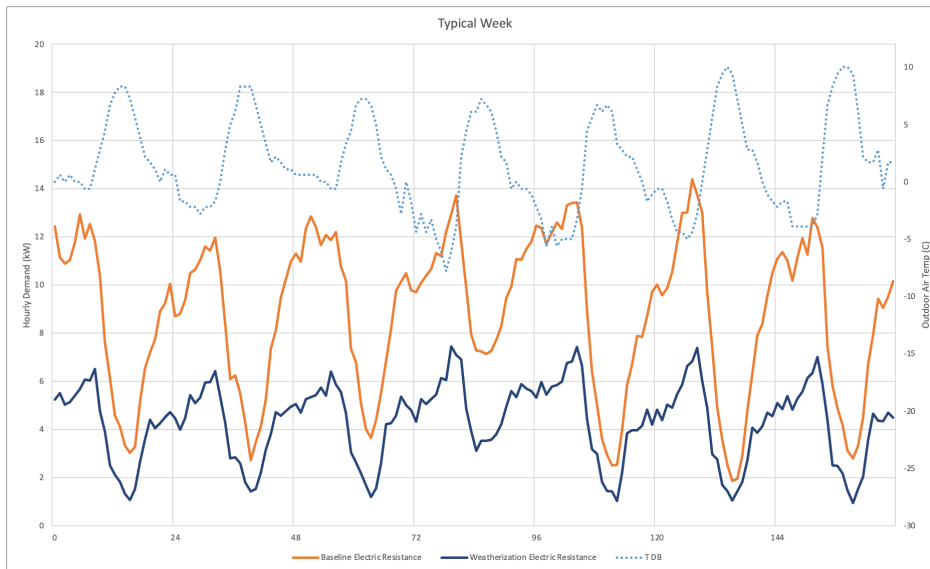
Load Increases Can be Dramatic During Extreme Winter Weather Events

February 1, 2021 to February 18, 2021



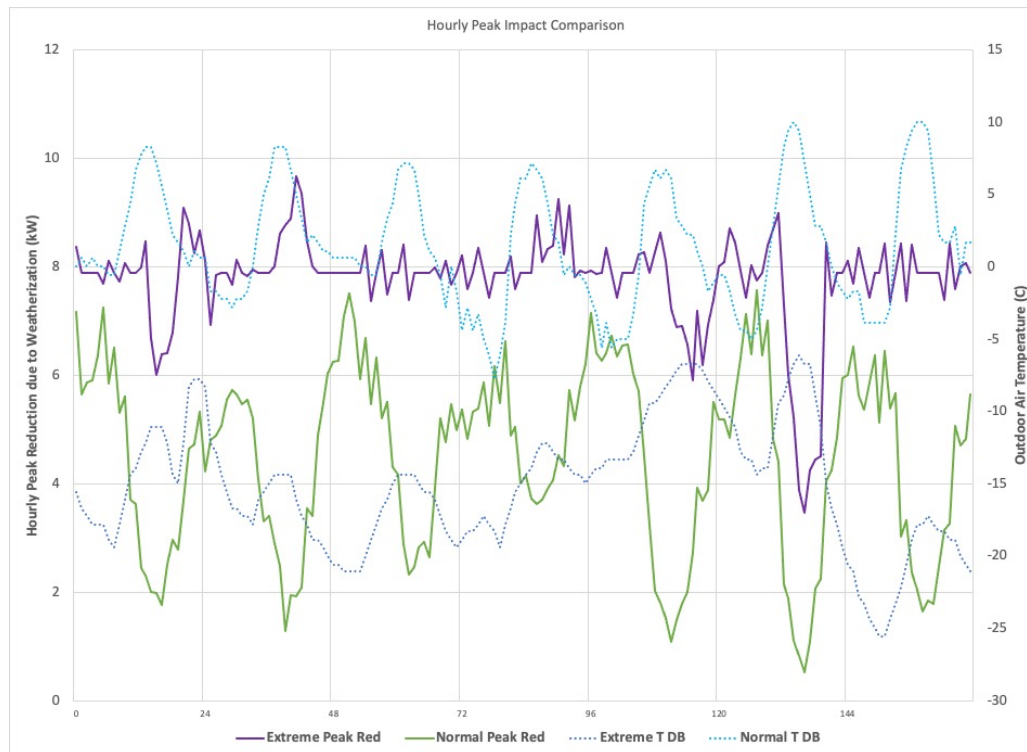
Source: U.S. Energy Information Administration

Impact of Weatherization on Residential Demand for Illustrative Kansas Residence During Typical and Extreme Winter Weather



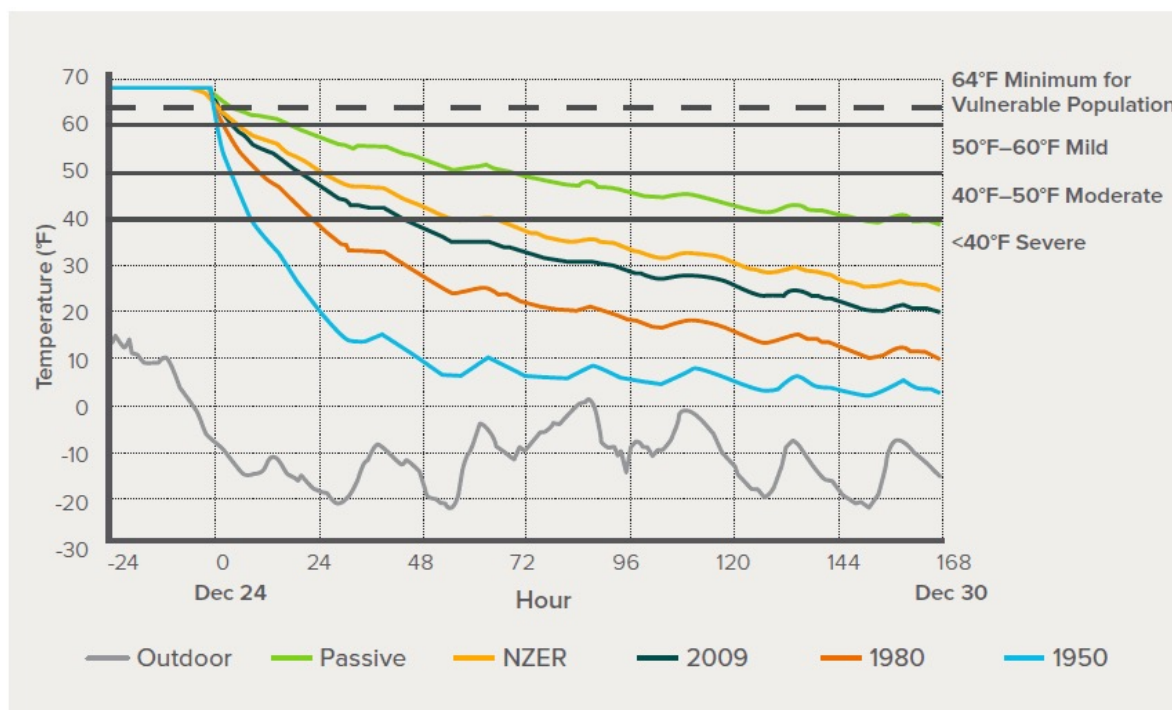
Source: Cadeo Group

Impact of Weatherization on Residential Demand for Illustrative Kansas Residence During Typical and Extreme Winter Weather



Source: Cadeo Group

Weatherized homes provide more “hours of safety” when power goes out



Source: RMI



ENERGY FUTURES GROUP