
IURC Summer 2011 Capacity Assessment

Raj Rao
President
Indiana Municipal Power Agency

May 23, 2011



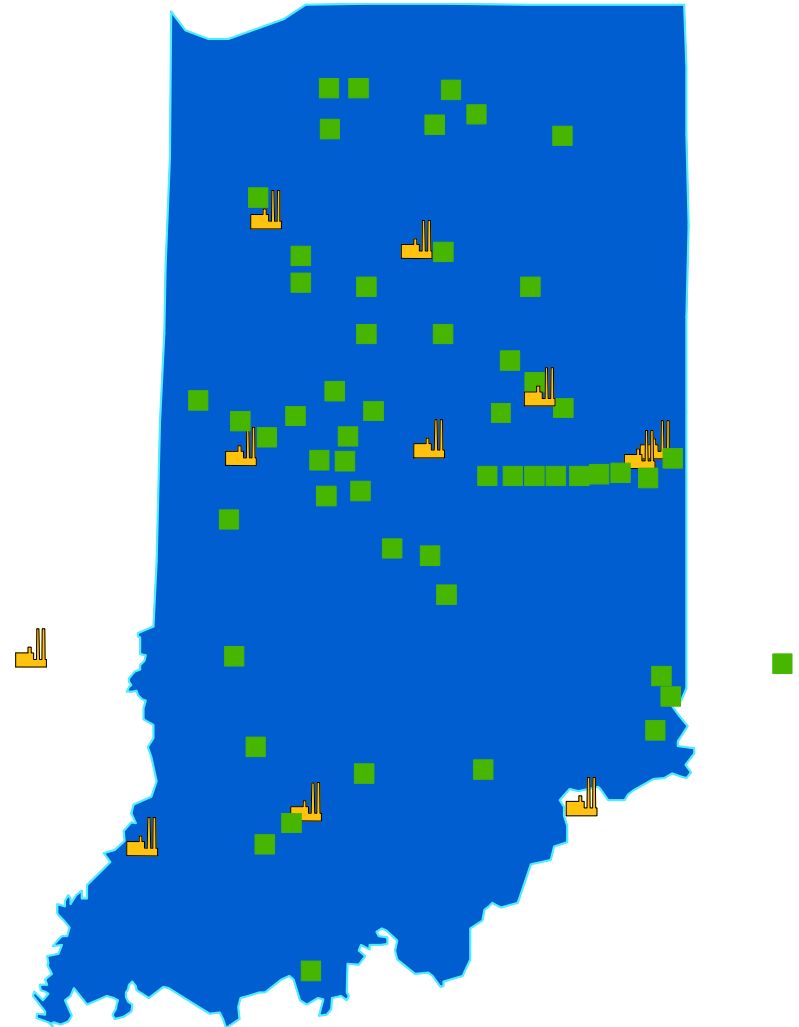
Presentation Topics

- Company Background
- Historic/Forecasted Requirements
- 2011 Load/Resource Balance
- EE and DR Activities
- Renewable Resource Development
- CIP/Cyber Security
- Emergency Preparedness

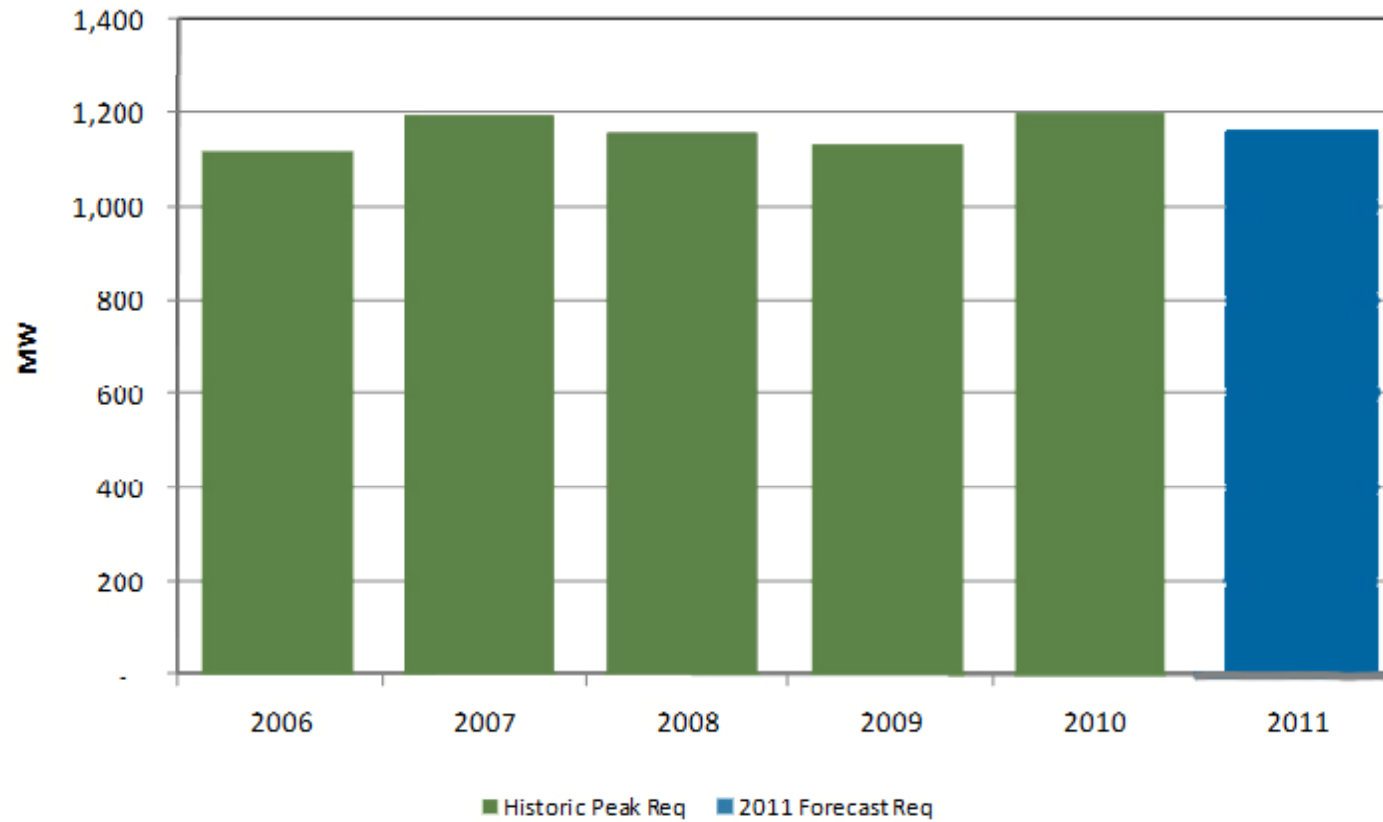


Indiana Municipal Power Agency

- Not for profit full requirements provider to 54 municipally owned distribution systems
- Owned and governed by member utilities
- Member communities represent a population of more than 323,000
- No retail customers
- Load in both MISO (67%) and PJM (33%)
- Portfolio of agency, joint and member-owned resources and purchased power contracts



Peak Demand



2011 Balance of Loads and Resources



Load Requirements

IMPA Peak Demand Requirements	1,161
-------------------------------	-------

Resources - UCAP

IMPA Owned Coal (*)	310
---------------------	-----

IMPA Owned Gas CTs	352
--------------------	-----

Member Generation	153
-------------------	-----

Purchased Power Contracts (*)	304
-------------------------------	-----

Net Market Capacity (MISO Purch + RPM "Sales")	78
--	----

Total Resources - UCAP	1,197
------------------------	-------

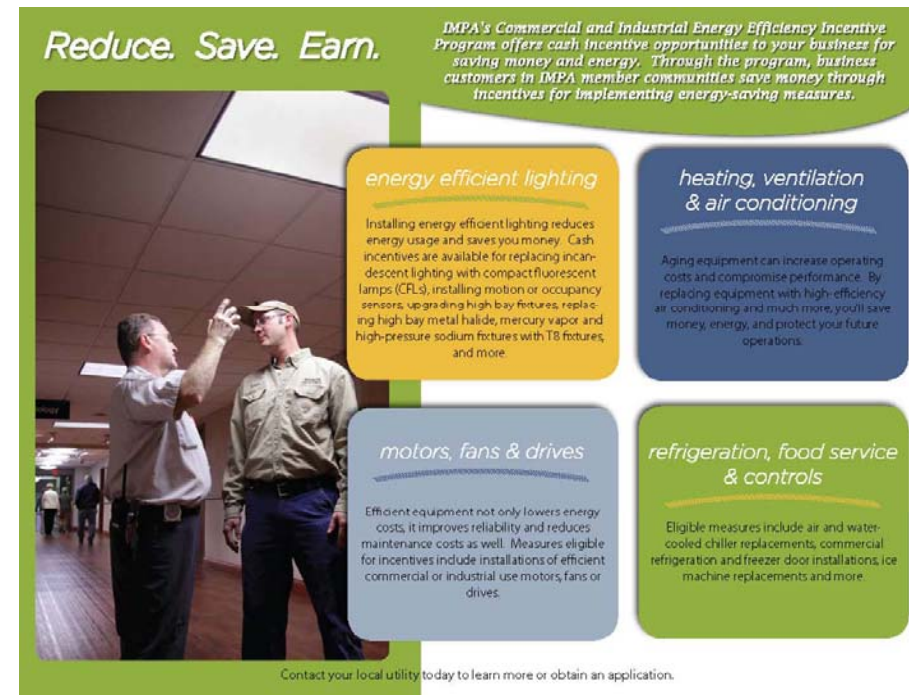
Reserves (per RTO Constructs)	36
-------------------------------	----

(*) - IMPA has several contract arrangements whereby the reserves are provided by the counterparty. This includes Gibson Unit #5 (156 MW) and three PPAs (304 MW). This reduces IMPA's reserve requirement.



Energy Efficiency and Demand Response

- IMPA Strategic Plan
 - Long Term EE and Renewable Energy Goals
- CORE programs - Actively involved in DSMCC Third Party Administrator selection
- Implemented a prescriptive C&I program in March when State program was delayed
- C&I Demand Response Tariff
 - Emergency DR tariffs available to IMPA members
 - Working on other DR tariff options



Reduce. Save. Earn.

DMPA's Commercial and Industrial Energy Efficiency Incentive Program offers cash incentive opportunities to your business for saving money and energy. Through the program, business customers in IMPA member communities save money through incentives for implementing energy-saving measures.

energy efficient lighting
Installing energy efficient lighting reduces energy usage and saves you money. Cash incentives are available for replacing incandescent lighting with compact fluorescent lamps (CFLs), installing motion or occupancy sensors, upgrading high bay fixtures, replacing high bay metal halide, mercury vapor and high-pressure sodium fixtures with T8 fixtures, and more.

heating, ventilation & air conditioning
Aging equipment can increase operating costs and compromise performance. By replacing equipment with high-efficiency air conditioning and much more, you'll save money, energy, and protect your future operations.

motors, fans & drives
Efficient equipment not only lowers energy costs, it improves reliability and reduces maintenance costs as well. Measures eligible for incentives include installations of efficient commercial or industrial use motors, fans or drives.

refrigeration, food service & controls
Eligible measures include air and water-cooled chiller replacements, commercial refrigeration and freezer door installations, ice machine replacements and more.

Contact your local utility today to learn more or obtain an application.



Energy Efficiency and Demand Response

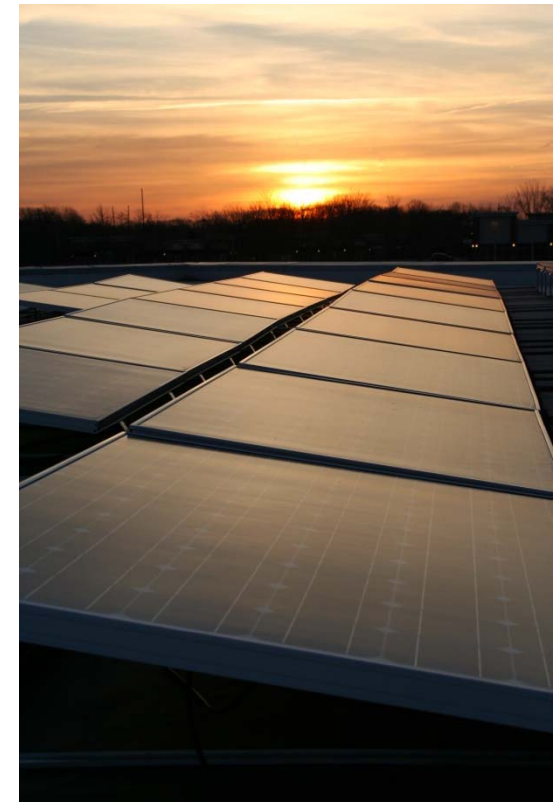


- EECBG grant for LED streetlights
 - Approximately 30 IMPA members participating
 - Over 10,000 streetlights will be replaced
 - Over 5,700 MWh annual savings when complete
- Information to members and member customers
 - Apogee Home Energy Suite
 - Energy calculators
 - Municipal Power News
 - Assortment of educational materials
- Customer Notifications
 - Customer notification of pending peak periods
 - For members with CP billing options for large C&I customers



Renewable Resource Development

- IMPA Initiatives
 - Long term plan calls for increased acquisition of economic renewable sources to meet the no/low carbon targets
 - IMPA HQ Demonstration Projects
 - Solar Water Heater
 - Solar Electricity – 6.4 kW
 - Wind turbine – 1.5 kW
 - Crystal Lake Wind Farm – Hancock County, Iowa – 50 MW
- Net Metering
 - Broader than current state rules
 - One 10 kW windmill in N. Indiana
 - Other projects under development
- Customer Generation
 - Contracts with two sites, 650 kW total
 - IMPA buys all energy output



CIP / Cyber Security

- IMPA is registered NERC entity and subject to NERC Standards, including the NERC CIP Standards
 - NERC Standards Audit in May, 2011 – Preliminary “No Finding” issued on the 23 applicable requirements audited – Final report due within 70 days
 - NERC CIP Audit in July, 2011
- IMPA is subject to CIP-001 to CIP-003. CIP-004 thru CIP-009 are not applicable to IMPA since IMPA does not operate any critical assets or cyber assets.
- No ability to remotely control any generation or transmission facilities. Infrastructure limited to company LAN and equipment needed to access the RTO portals for scheduling and data collection
- Subscribe to and respond, where necessary, to any NERC or DHS alerts
- Aurora mitigation plan



Computer consultant assists with evaluating potential network threats

Emergency Preparedness

- IMPA serves wholesale load in both MISO and PJM
- 24 Hour market operations center in Carmel
- Back up operations center at Anderson CT site
- All power system coordinators are PJM Certified Generation System Operators
- In constant contact with balancing authorities to take appropriate action in case of system emergencies



Conclusion

- IMPA is in compliance with MISO and PJM resource adequacy constructs for the summer of 2011
- IMPA has sufficient resources to meet its member needs during the summer of 2011

