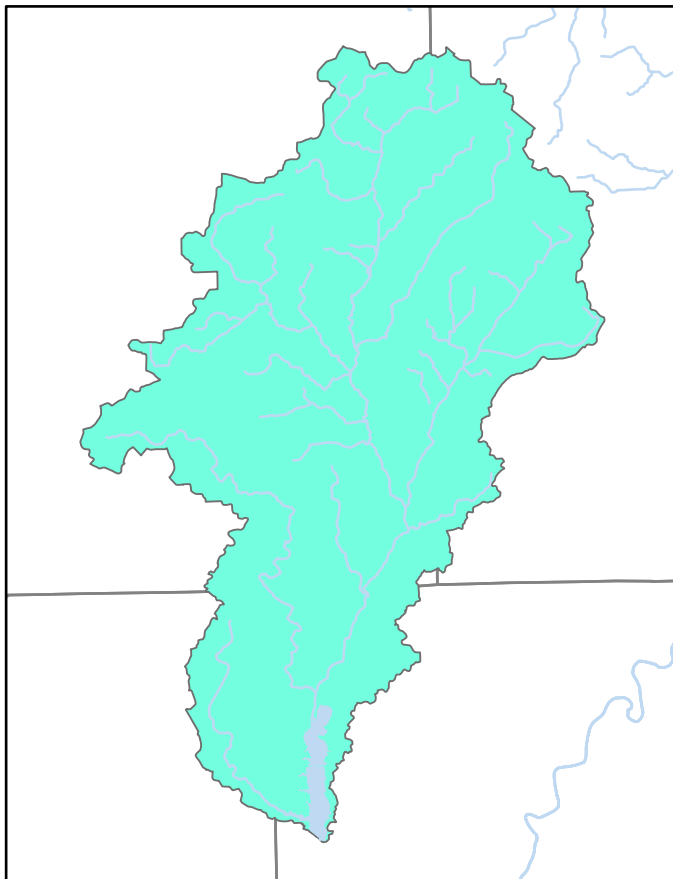


# 2023 Eagle Creek Reservoir Nutrient and Sediment Load Reductions Accomplished By Private Landowners and the Indiana Conservation Partnership

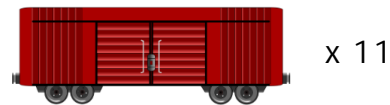


Comparison of Land Use Across Basin



**Sediment Reduced: 2,297,460 lbs.**

Enough to fill 11 freight cars!



**Phosphorus Reduced: 1,414 lbs.**

Enough to fill 1 truck beds (8' bed)!



**Nitrogen Reduced: 2,717 lbs.**

Enough to fill 3 truck beds (8' bed)!



Practices do not include the many unassisted practices designed and installed by private landowners without ICP assistance. Nutrient estimates only consider sediment-bound N and P, not dissolved components. Load reductions are calculated using the EPA's Region 5 Load Reduction Model.

Year	Active Practices	Practices Installed	Sediment Reduction (lbs)	Phosphorus Reduction (lbs)	Nitrogen Reduction (lbs)
2018	43	28	3,522,170	1,990	3,880
2019	37	17	2,281,448	1,343	2,583
2020	50	24	2,791,955	1,679	3,253
2021	77	40	4,854,209	2,974	5,840
2022	68	25	2,797,408	1,749	3,386
2023	61	9	2,297,460	1,414	2,717
2013-23	-	217	27,283,832	16,048	31,153

The "practices installed" column indicates the number of newly installed practices within a given year, while the "active practices" column indicates the number of practices that are actively reducing sediment and nutrient loading regardless of the year of installation. Please Note: Calendar year 2013 through 2017 metrics are excluded from the table due to space limitations, but are present in the "2013-23" summations.

Data provided by: Indiana State Department of Agriculture, Indiana Department of Natural Resources, Indiana Department of Environmental Management, Indiana Soil and Water Conservation Districts, and the USDA Natural Resource Conservation Service.

For more information visit:  
<http://www.in.gov/isda/2991.htm>  
 or contact ISDA NutrientReduction@isda.in.gov  
 Last updated: 3/28/2023