

AGENDA
STATE SOIL CONSERVATION BOARD MEETING
Wednesday, December 12, 2012, 9:30 AM
The Nature Conservancy
620 E Ohio St
Indianapolis, Indiana

- I. 9:30 AM: Call to Order**
- II. Approve Minutes of September and October 2012**
- III. Clean Water Indiana**
 - a. Budget Update-Jennifer Pinkston
 - b. CREP Report-Logan Garner
- IV. Soil and Water Conservation Districts**
 - a. Election Approvals and Reminders-Jim Lake (See Attachments)
- V. SSCB Reports**
 - a. SSCB Chairman's Report-Scott Ham
 - b. SSCB Attendance at Annual Meetings
- VI. ISDA Reports**
 - a. Technical Assistance Report-Deb Fairhurst
 - b. Accountability and Technology Report-Deb Fairhurst
 - c. Agricultural Affairs Report-Jordan Seger
 - d. District Support Update-Jim Lake
 - e. Water Quality Update-Logan Garner
- VII. Conservation Partner Reports**
 - a. IASWCD Report
 - b. IDEM Report
 - c. DNR Report
 - d. Purdue Report
 - e. FSA Report
 - f. NRCS Report
- VIII. Public Comment**
- IX. Next Meeting: TBA**
- X. Adjourn**

PLEASE NOTE

This agenda is in DRAFT FORM. Open Door Law does not prohibit the public agency from changing or adding to its agenda during the meeting.

Watershed	SWCD CREP Administrators	Completed Contracts	Completed State Funds (Paid to Landowner)	SWCD Administrative Fees	Native Grasses	Permanent Wildlife Habitat	Filter Strip	Hardwood Tree Planting	Riparian Buffer	Bottomland Timber Establishment	Wetland Restoration	Wetland Restoration (non floodplain)	Total
Upper White River Watershed	Hamilton Co.	230	\$594,935.0	\$0.0	1.6	0.0	412.7	1.0	116.5	928.3	0.0	20.4	1,480.5
Tipecanoe River Watershed	Fulton Co.	519	\$755,365.0	\$0.0	0.0	0.0	2,916.8	0.0	7.8	20.4	121.7	924.0	3,990.7
Highland-Pigeon Watershed	Gibson Co.	107	\$104,097.0	\$0.0	2.5	0.0	214.8	10.8	16.0	109.3	0.0	0.0	353.4
Total:		856	\$1,454,397.0		4.1	0.0	3,544.3	11.8	140.3	1,058.0	121.7	944.4	5,824.6

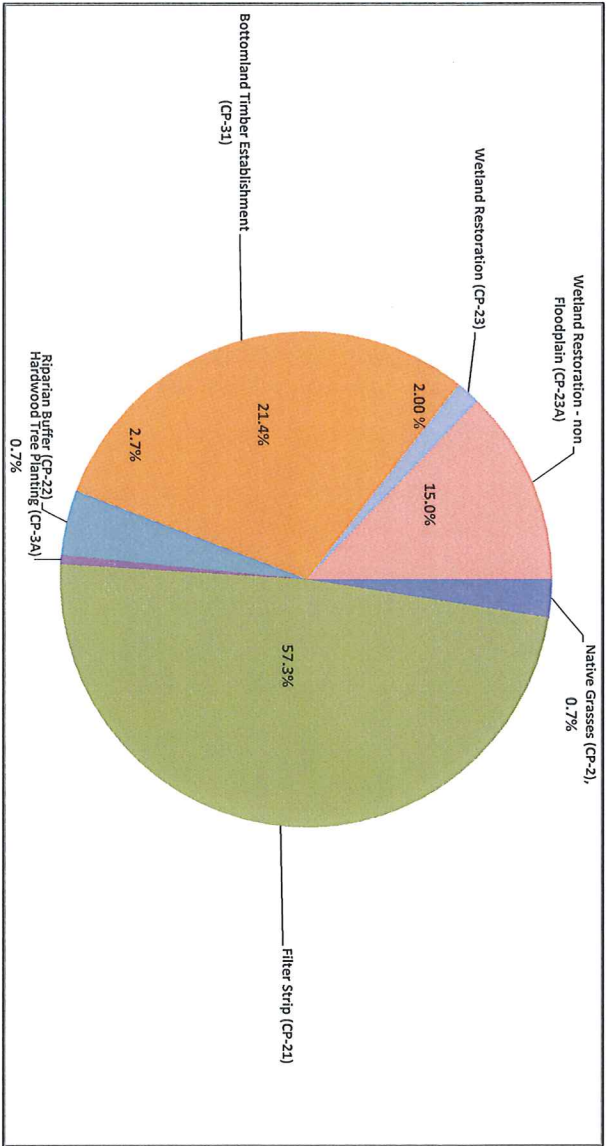
Post-Expansion

Watershed	SWCD CREP Administrators	Completed Contracts	Completed State Funds (Paid to Landowner)	SWCD Administrative Fees (since expansion)	Native Grasses	Permanent Wildlife Habitat	Filter Strip	Hardwood Tree Planting	Riparian Buffer	Bottomland Timber Establishment	Wetland Restoration	Wetland Restoration (non floodplain)	Total
Upper White River	Hamilton Co.	42	\$79,385.00	\$7,938.50	16.3	0.0	66.1	0.0	151.8	113.3	0.0	12.1	359.6
Tipecanoe River	Fulton Co.	3	\$8,560.00	\$856.00	74.8	0.0	24.3	0.0	0.0	21.4	0.0	1.0	111.5
Highland-Pigeon	Gibson Co.	1	\$180,000.00	\$180.00	0.0	0.0	0.0	0.0	0.0	4.5	0.0	0.0	4.5
Lower East Fork	Orange Co.	10	\$91,590.00	\$9,159.00	24.3	0.0	0.0	0.0	22.6	307.7	0.0	0.0	354.6
Lower Wabash	Gibson Co.	2	\$2,504.00	\$250.00	0.0	0.0	0.0	0.0	0.0	6.3	0.0	0.0	6.3
Lower White	Davess Co.	6	\$9,670.00	\$967.00	10.7	0.0	0.0	0.0	0.0	21.5	0.0	0.0	32.2
Middle Wabash Busseron	Sullivan Co.	14	\$206,880.00	\$20,688.00	52.4	0.0	0.0	0.0	2.0	517.2	0.0	0.0	571.6
Middle Wabash Deer	Howard Co.	2	\$8,480.00	\$848.00	0.0	0.0	0.0	0.0	0.0	21.2	0.0	0.0	21.2
Middle Wabash Vermillion	Parke Co.	3	\$33,760.00	\$3,376.00	0.0	0.0	0.0	0.0	0.0	84.4	0.0	0.0	84.4
Upper East Fork White	Deatur Co.	5	\$25,080.00	\$2,508.00	0.0	0.0	0.0	33.4	0.0	29.3	0.0	0.0	62.7
Upper Wabash	Huntington Co.	6	\$20,530.00	\$2,053.00	3.7	6.0	0.0	0.0	0.0	48.9	0.0	0.0	58.6
Total:		94	\$488,239.00	\$48,823.50	182.2	6.0	90.4	33.4	176.4	1,175.7	0.0	13.1	1,677.2

4/16/2012

Total Pre and Post

Watershed	SWCD CREP Administrators	Completed Contracts	Completed State Funds (Paid to Landowner)	SWCD Administrative Fees (1)	Native Grasses	Permanent Wildlife Habitat	Filter Strip	Hardwood Tree Planting	Riparian Buffer	Bottomland Timber Establishment	Wetland Restoration	Wetland Restoration (non floodplain)	Total
Upper White River Watershed	Hamilton Co.	272	\$674,320.00	\$7,938.50	17.9	0.0	478.8	1.0	268.3	1,041.6	0.0	32.5	1,840.1
Tipecanoe River Watershed	Fulton Co.	522	\$763,925.00	\$2,429.00	74.8	0.0	2,941.1	0.0	7.8	41.8	121.7	925.0	4,112.2
Highland-Pigeon Watershed	Gibson Co.	108	\$405,897.00	\$180.00	2.5	0.0	214.8	10.8	16.0	113.8	0.0	0.0	357.9
Lower East Fork	Orange Co.	10	\$91,590.00	\$9,159.00	24.3	0.0	0.0	0.0	22.6	307.7	0.0	0.0	354.6
Lower Wabash	Gibson Co.	2	\$2,504.00	\$250.00	0.0	0.0	0.0	0.0	0.0	6.3	0.0	0.0	6.3
Lower White	Davess Co.	6	\$9,670.00	\$967.00	10.7	0.0	0.0	0.0	0.0	21.5	0.0	0.0	32.2
Middle Wabash Busseron	Sullivan Co.	14	\$206,880.00	\$20,688.00	52.4	0.0	0.0	0.0	2.0	517.2	0.0	0.0	571.6
Middle Wabash Deer	Howard Co.	2	\$8,480.00	\$848.00	0.0	0.0	0.0	0.0	0.0	21.2	0.0	0.0	21.2
Middle Wabash Vermillion	Parke Co.	3	\$33,760.00	\$3,376.00	0.0	0.0	0.0	0.0	0.0	84.4	0.0	0.0	84.4

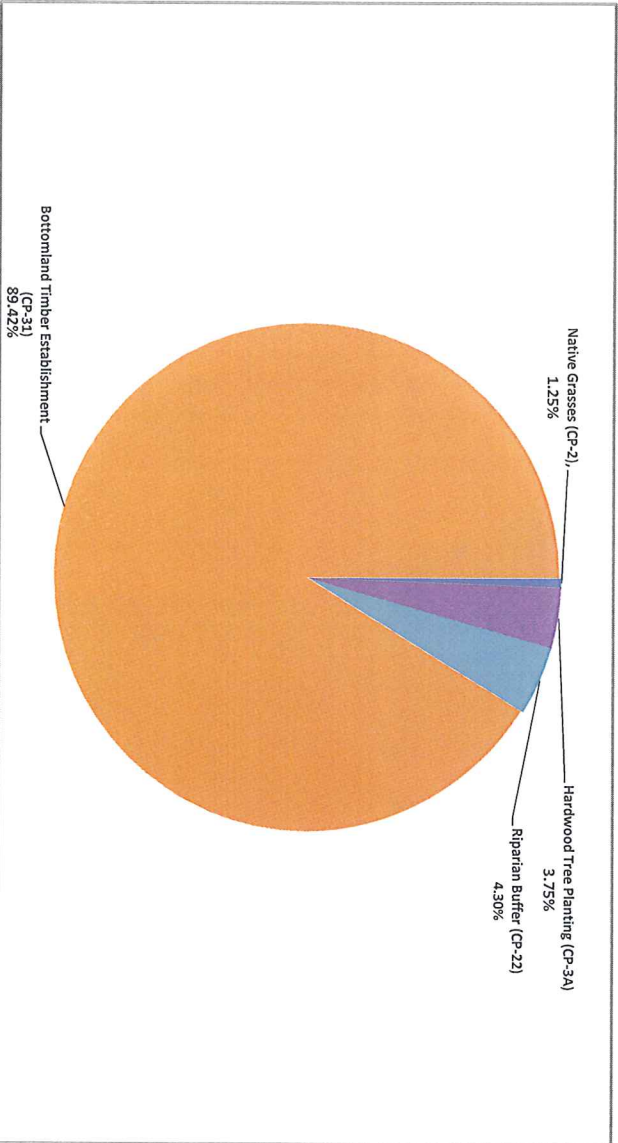


FUTURE/IN PROGRESS NOT DONE FOR APRIL 2012 REPORT

Watershed	SWCD CREP Administrators	Native Grasses CP-2 Acres	Permanent Wildlife Habitat CP-4D Acres	Filter Strip CP-21 Acres	Hardwood Tree Planting CP-3A Acres	Riparian Buffer CP-22 Acres	Bottomland Timber Establishment CP-31 Acres	Wetland Restoration CP-23 Acres	Wetland Restoration (non Floodplain) CP-23A Acres	Total Acres
Upper White River Watershed	Hamilton Co.					10.0	10.0			20.0
Tippecanoe River Watershed	Fulton Co.									0.0
Highland-Pigeon Watershed	Gibson Co.						355.0			355.0
Middle-Wabash-Busseron	Sullivan Co.						51			51.0
Middle Wabash Vermillion	Parke Co.					4.0	20.0			24.0
Lower East Fork White	Orange Co.					21.0				21.0
Lower Wabash	Gibson Co.									0.0
Lower White	Davess Co.									0.0
Middle Wabash Deer	Howard Co.					3.0	22.0			25.0
Middle Wabash Vermillion	Parke Co.						51.0			51.0
Upper East Fork White	Decatur Co.	5.0	11.0				57.0			95.0
Upper Wabash	Huntington Co.						220.0			231.0
Total:		5.0	11.0	0.0	33.0	38.0	786.0	0.0	0.0	873.0

Native Grasses (CP-2)	0.57%
Permanent Wildlife Habitat (CP-4D)	0%
Filter Strip (CP-21)	0.00%
Hardwood Tree Planting (CP-3A)	3.75%
Riparian Buffer (CP-22)	4.35%
Bottomland Timber Establishment (CP-31)	90.03%
Wetland Restoration (CP-23)	0.00%
Wetland Restoration - non Floodplain (CP-23A)	0.00%

98.74%



County	Appointment	Note	
Adams	Alex Steiner	Lawrence	Kyle Mason
Allen	Thomas Miller	Madison	Mike Lawyer
Bartholomew	Dennis Brooks	Marion	Brian N Neilson
Benton	Dave Wettschurack	Marshall	N/A
Blackford	na	Martin	Kevin Martin Qualkent
Boone	Gerald Shelburne	Miami	Jerry Miller
Brown	Can't find someone to run.	Monroe	Rick Routon
Carroll	N/A	Montgomery	Marc P Roberts
Cass	N/A	Morgan	
Clark	N/A	Newton	Larry Strole
Clay	Marshall Nuckolls	Noble	Greg Flory
Clinton	Charles K. Calvert	Ohio	na
Crawford	Garry Brown	Orange	Danny Orr
Daviess	N/A	Owen	Not submitted on time
Dearborn	Brad Dawson	Park	Bob Hale
Decatur	Roger Wenning	Perry	Brad Harth
Dekalb	Judy Strock	Pike	N/A
Delaware	Did not submit	Porter	N/a
Dubois	Glenn Menke	Posey	Matthew Mcfadin
Elkhart	N/A	Pulaski	N/A
Fayette	Dave Caldwell	Putnam	N/A
Floyd	Neal Renn	Randolph	na
Fountain	N/A	Ripley	na
Franklin	Mike Schwab	Rush	John Meyer
Fulton	Mike Norman	St. Josephy	Arlene Schuchman
Gibson	Dave Greubel	Scott	Pat Larr
Grant	na	Shelby	na
Greene		Spencer	Brian Rahaman
Hamilton	N/A	Starke	Brad Lawrence
Hancock	Mike Conner	Steuben	N/A
Harrison	N/A	Sullivan	Mike Bell
Hendricks	Not submitted on time	Switzerland	Ken Briggs
Henry	Jim Wenning	Tippecanoe	N/A
Howard	Michelle Gilbert	Tipton	Thomas E. Ripberger
Huntington	Kyle Lund	Union	na
Jackson	Charlie Fox	Vanderburgh	N/A
Jasper	Lana Zimmer	Vermillion	Josh Bishop
Jay	na	Vigo	Denny Bell
Jefferson	N/A	Wabash	Robert Hettmansperge
Jennings	Dan Megel	Warren	Tim Davis
Johnson	Kevin Thompson	Warrick	Jeffrey Baker
Knox	Curt Coffman	Washington	James "Jim" Brown
Kosciusko	Jon Roberts	Wayne	Scott McCarty
Lagrange	N/A	Wells	Chad Fiechter
Lake	Brian Wietbrock	White	N/A
LaPorte	Myrna L Harder	Whitley	N/A

Accountability & Technology Report

State Soil Conservation Board Meeting – December 12, 2012

New Hires – 319 Tippecanoe and 319 Upper Wabash

Debra Jimison – Debra will fill the 319 Tippecanoe Watershed position. She is a graduate of Purdue University with a BS degree in Environmental Science. She brings with her a wealth of experience in surveying, design and construction. She owned her own business in Elkhart, Soil and Water Investigation, where she conducted environmental site assessments and wetland investigations. Before that, she was an environmental scientist for Progressive Engineering in Goshen. Debra will be housed in the Winamac office.

Nick Alles – Nick replaces Nate Houk in the 319 Upper Wabash. Nate moved to the WLEB position located in Adams County. Nick is recent graduate from St. Francis University with a BS degree in Environmental Science. He has survey and construction experience and a good knowledge of agricultural conservation practices. Nick will be housed in Huntington office.

Region 5 Model

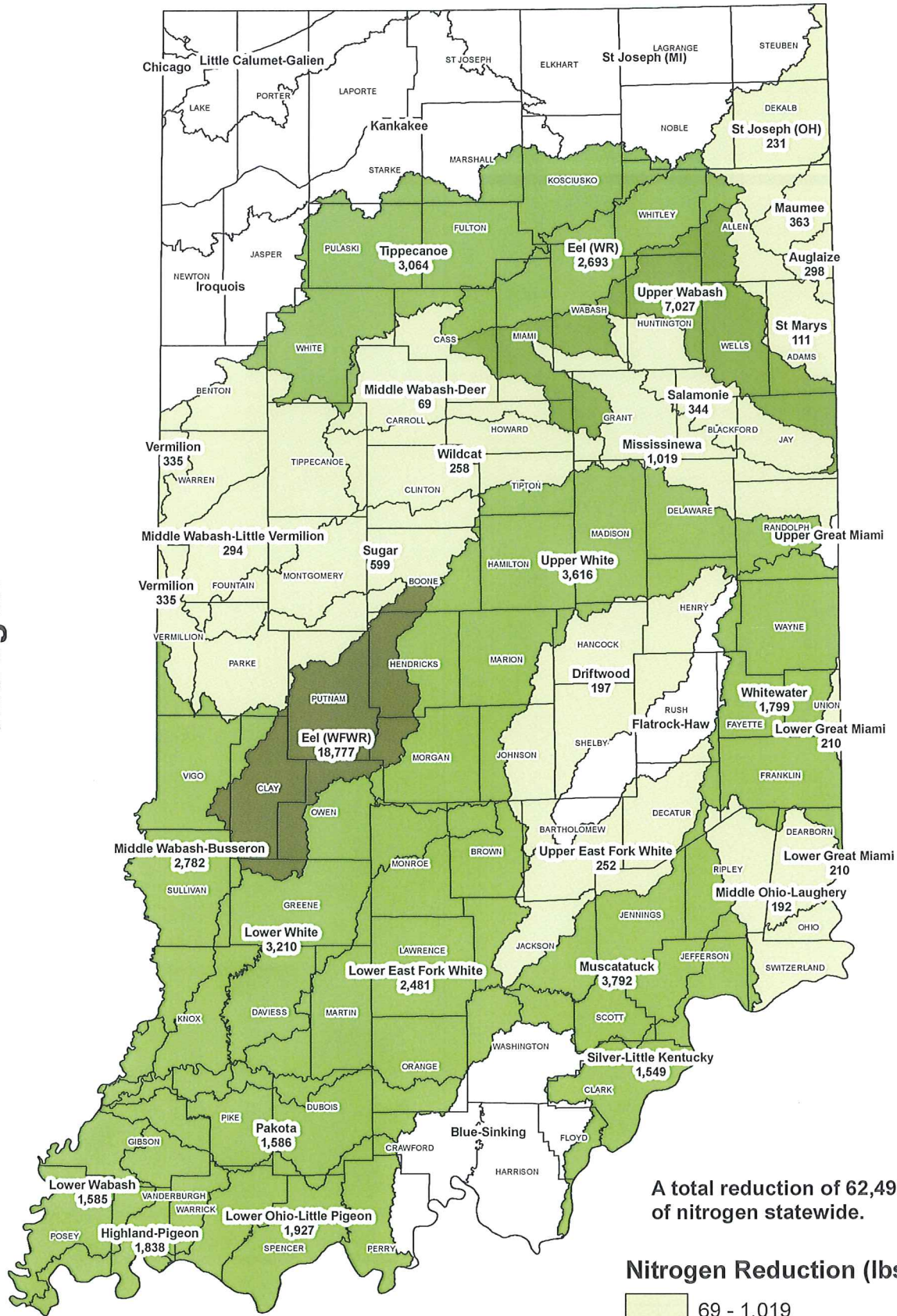
Earlier this year, IDEM personnel trained Division field staff how to utilize the Region 5 Model to capture nutrient load reductions. This past month, Resource Specialists finished calculating the nitrogen, phosphorus and sediment reductions for all of their completed practices (2010–2012) and entering their reductions into SharePoint.

This past month I created nutrient load reduction maps based from the Region 5 Model analyses. The maps feature the nitrogen, phosphorus, and sediment losses for each HUC 8 watershed in Indiana. I've provided the maps to Jennifer Boyle, IASWCD Executive Director, who will use them to demonstrate the Division's impact on water quality during the upcoming legislative session. It is hoped these maps will assist Jennifer and the IASWCD Legislative Committee in their endeavors to secure additional Clean Water Indiana and Division of Soil Conservation funding.

SharePoint 2010

We have officially migrated to SharePoint 2010. In preparation, I provided over 250 users with a new tutorial featuring the new "ribbon" look and feel of the updated software. Currently, everything is running smoothly.

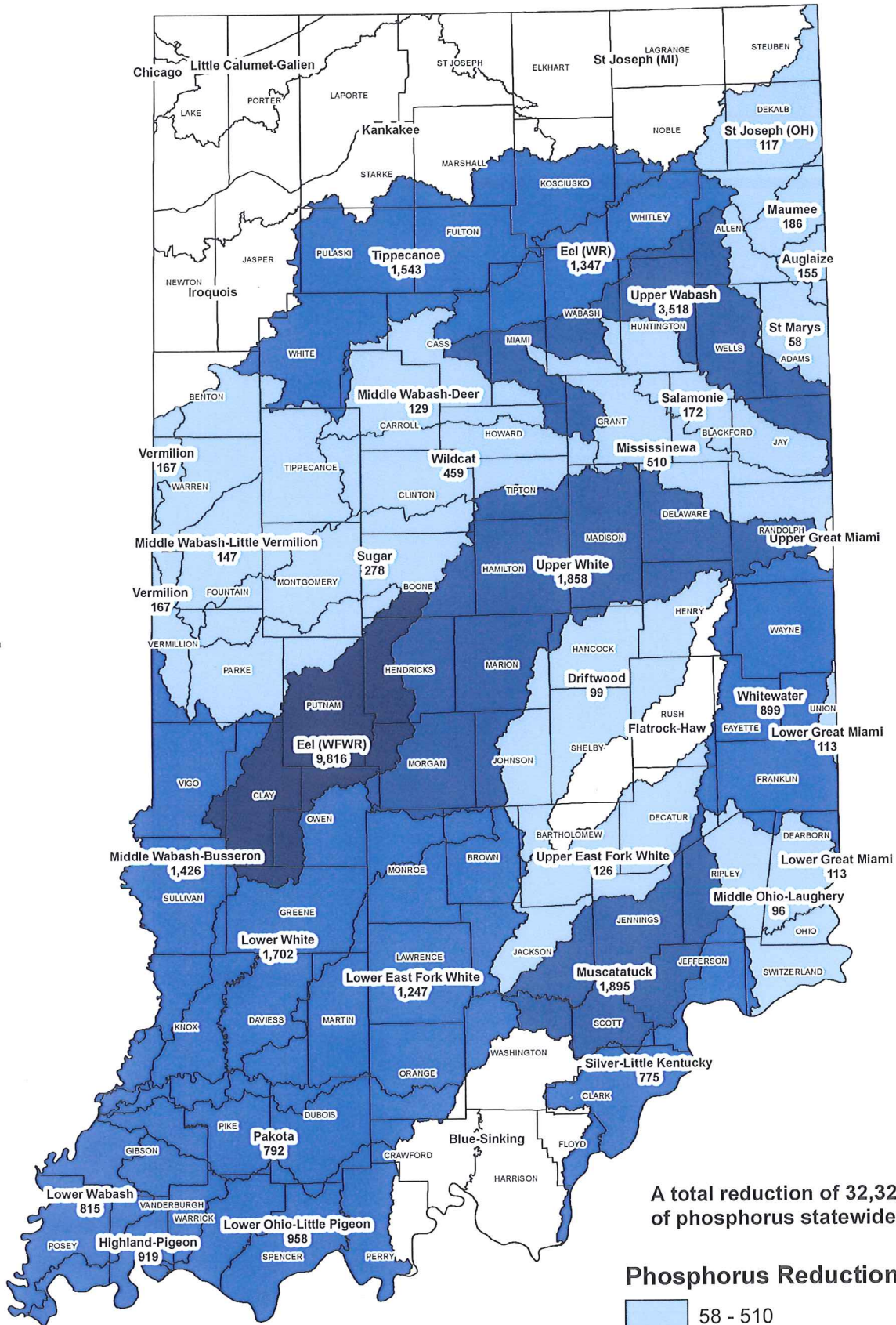
2012 Nutrient Load Reductions Nitrogen



A total reduction of 62,499 pounds of nitrogen statewide.

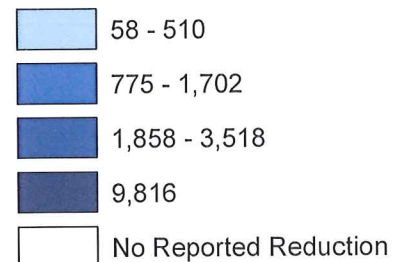
Based on Region 5 Model analyses conducted on 321 conservation practices installed by ISDA Division of Soil Conservation field staff from January 2012 thru November 2012. Watersheds with low or no nutrient load reductions correlate with the lack of Division field staff in those areas.

2012 Nutrient Load Reductions Phosphorus



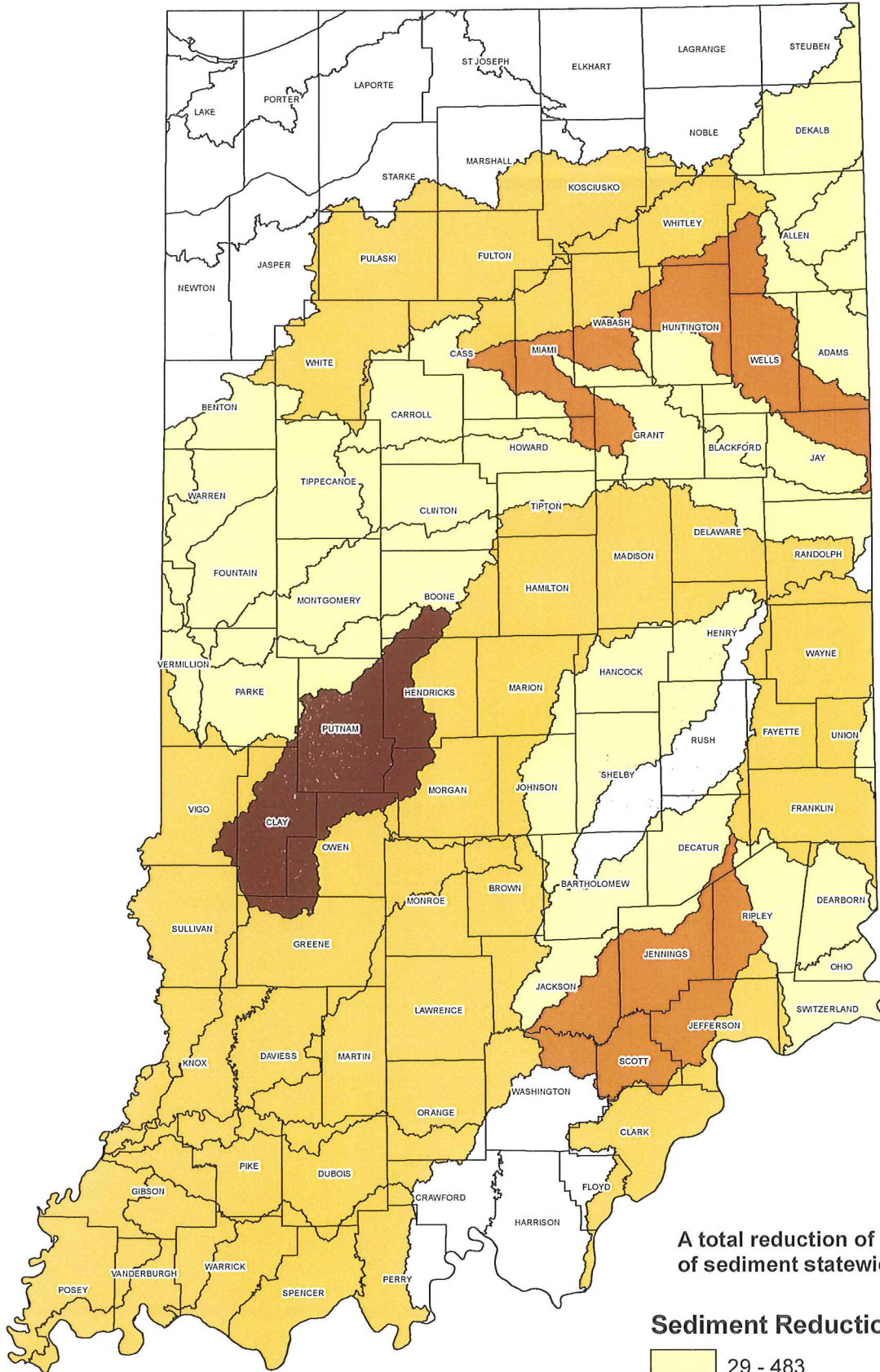
A total reduction of 32,320 pounds of phosphorus statewide.

Phosphorus Reduction (lbs./year)



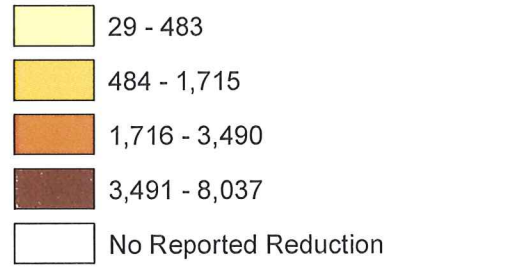
Based on Region 5 Model analyses conducted on 321 conservation practices installed by ISDA Division of Soil Conservation field staff from January 2012 thru November 2012. Watersheds with low or no nutrient load reductions correlate with the lack of Division field staff in those areas.

2012 Nutrient Load Reductions Sediment



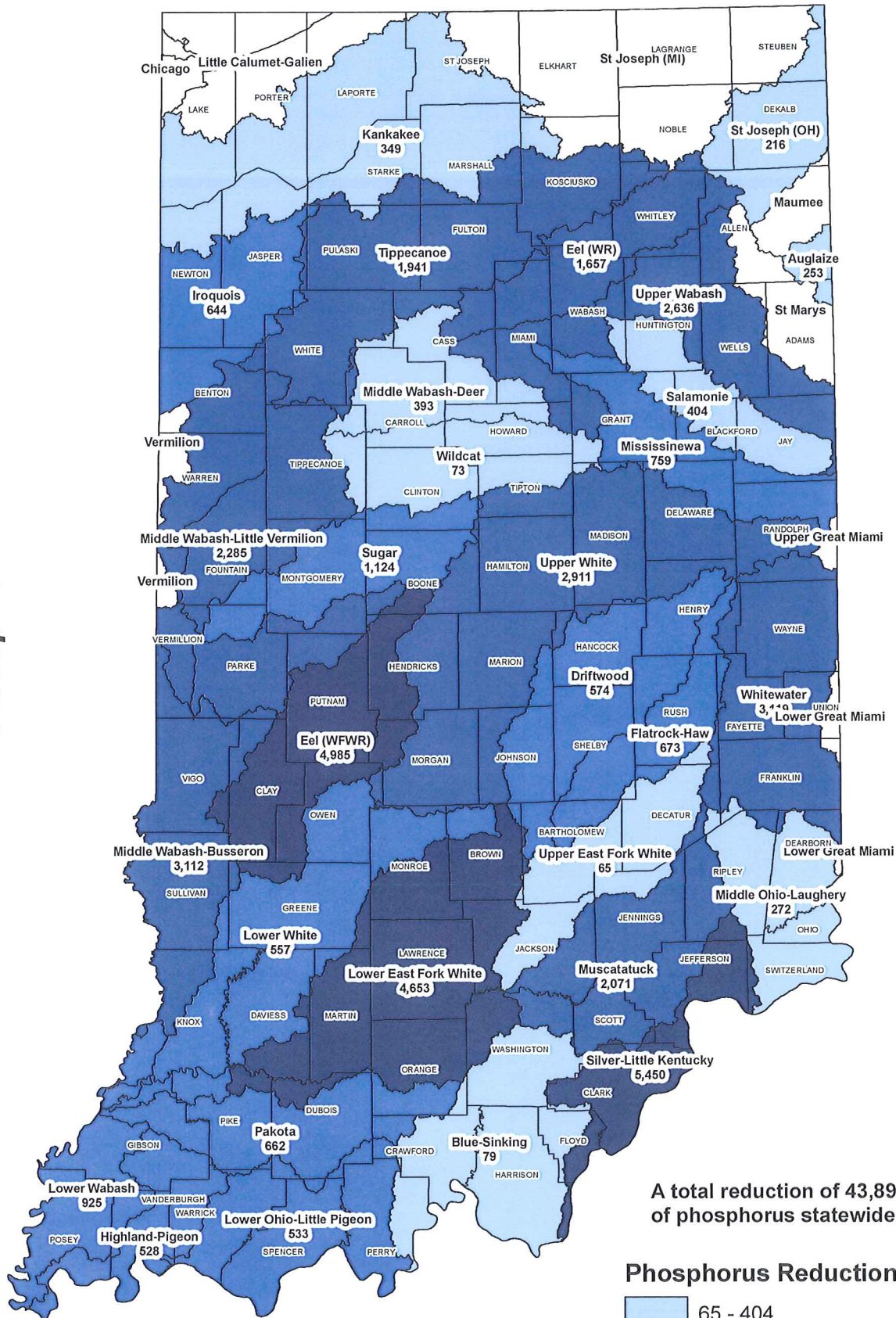
A total reduction of 29,603 tons of sediment statewide.

Sediment Reduction (tons/year)



Based on Region 5 Model analyses conducted on 321 conservation practices installed by ISDA Division of Soil Conservation field staff from January 2012 thru November 2012. Watersheds with low or no nutrient load reductions correlate with the lack of Division field staff in those areas.

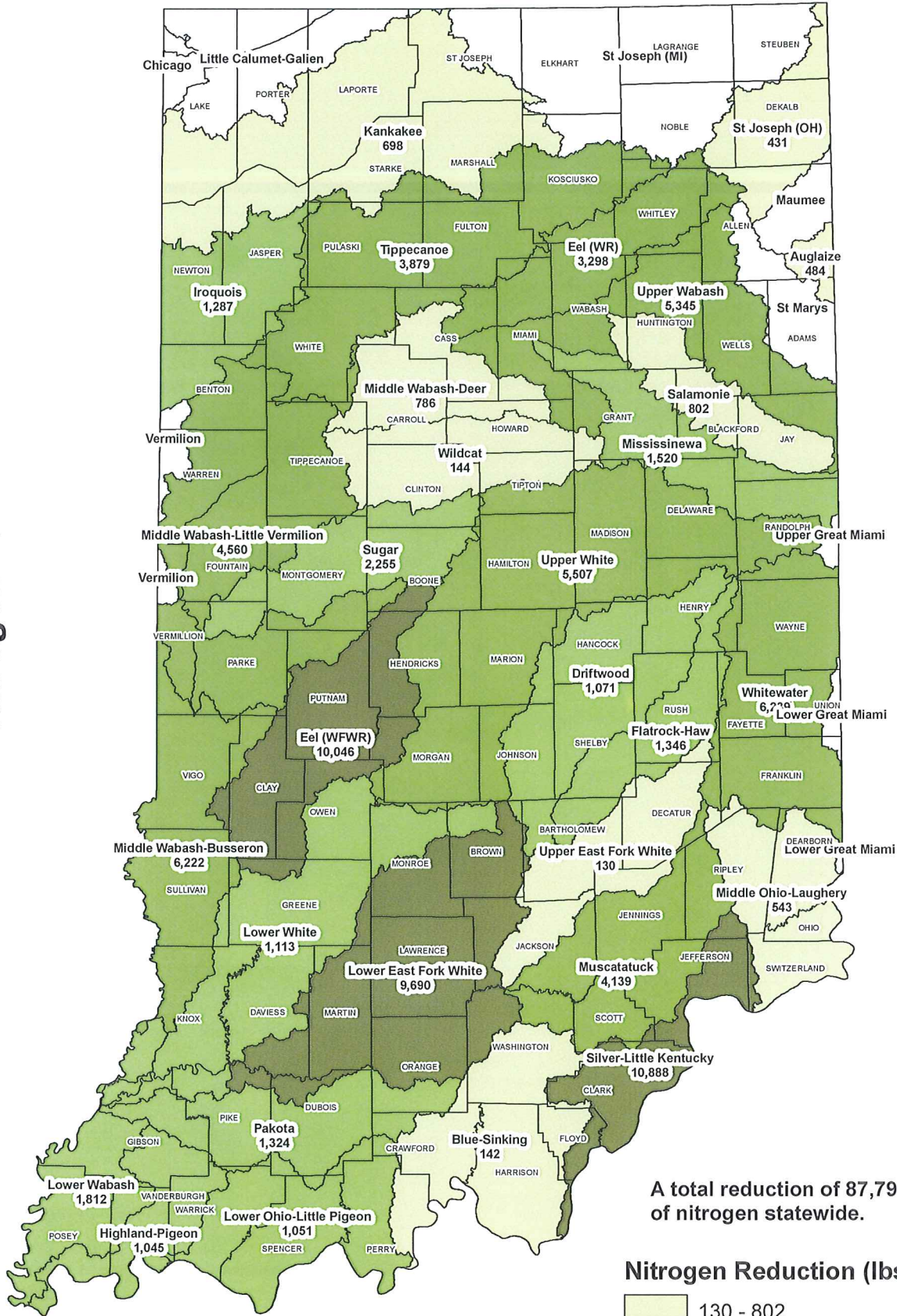
2011 Nutrient Load Reductions Phosphorus



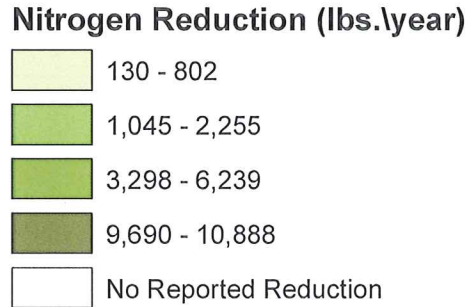
A total reduction of 43,898 pounds of phosphorus statewide.

Based on Region 5 Model analyses conducted on 419 conservation practices installed by ISDA Division of Soil Conservation field staff from January 2011 thru December 2011. Watersheds with low or no nutrient load reductions correlate with the lack of Division field staff in those areas.

2011 Nutrient Load Reductions Nitrogen

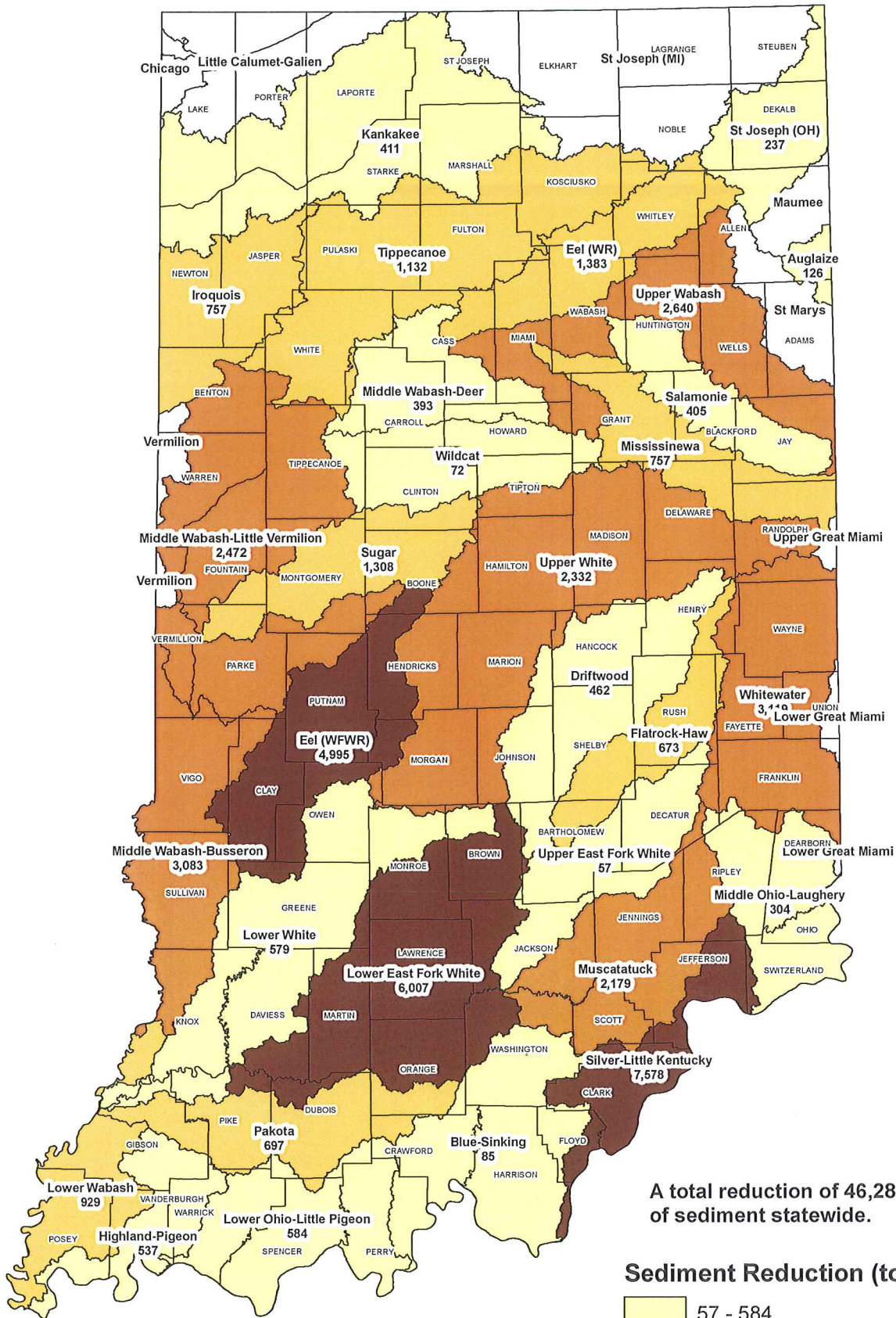


A total reduction of 87,796 pounds of nitrogen statewide.



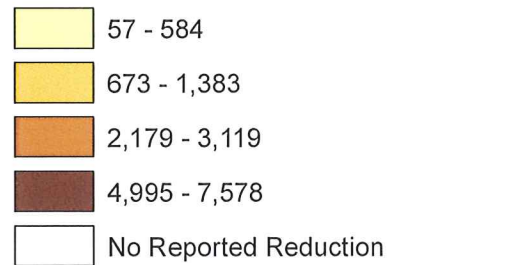
Based on Region 5 Model analyses conducted on 419 conservation practices installed by ISDA Division of Soil Conservation field staff from January 2011 thru December 2011. Watersheds with low or no nutrient load reductions correlate with the lack of Division field staff in those areas.

2011 Nutrient Load Reductions Sediment



A total reduction of 46,289 tons of sediment statewide.

Sediment Reduction (tons/year)



Based on Region 5 Model analyses conducted on 419 conservation practices installed by ISDA Division of Soil Conservation field staff from January 2011 thru December 2011. Watersheds with low or no nutrient load reductions correlate with the lack of Division field staff in those areas.

**NRCS State Conservationist Report
State Soil Conservation Board Meeting
December 2012**

Programs Update

As we await a new Farmbill, field offices are still servicing existing contracts, doing conservation planning, and accepting applications for the Environmental Quality Incentives Program (EQIP), Wildlife Habitat Incentives Program (WHIP) and Conservation Stewardship Program (CSP). Due to the expiration of the Farm Bill, NRCS cannot currently accept applications for the Wetland Reserve Program (WRP), Grasslands Reserve Program (GRP), Health Forests Reserve Program (HFRP) and Conservation Reserve Program (CRP), although we are servicing existing contracts signed in prior years.

Soil Health Update

The National Soil Health marketing campaign started in October. As information is received we will be sharing it with you. The latest NRCS publications and information can be found on the Indiana NRCS Soil Health website, at <http://www.in.nrcs.usda.gov/>. The Conservation Cropping Systems Initiative (CCSI) website can be found through a link on the NRCS Soil Health web page, or at <http://www.in.gov/isda/ccsi/>, which contains a calendar listing Soil Health events and workshops.

Security Awareness Training

Partner employees utilizing CCE machines must have Security Awareness Training completed by the end of January in AgLearn.

IASWCD Annual Conference

Due to budget and travel constraints, NRCS field staff will not be attending the IASWCD Annual Conference this year. NRCS State Leadership staff will be attending and sharing information with the District Conservationists. NRCS encourages the Districts to attend and also share information with local NRCS staff. NRCS plans to resume District Conservationist attendance *with* the 2014 Annual Conference.

NRCS National Website

NRCS launched its newly redesigned national website on November 1 (www.nrcs.usda.gov), which now looks very similar to the USDA website (www.usda.gov). State websites will be integrating into this new design over the next several months. With this new design, the NRCS website has more capabilities, including:

- **Homepage Features:** Larger photos and five scrolling features to highlight important programs and accomplishments.
- **Popular Topics:** A list of the five most popular topics visited is included to the right of our scrolling features.
- **Events & Deadlines:** A list of news and upcoming program deadlines and events.
- **A-Z index:** This new feature at the top right will help users find content more easily.
- **Improved navigation & layout:** The navigation and hyperlinks are condensed and now only appear on the left side of most pages.
- **Social media:** We've made it easier to follow NRCS social media through the social media icons on each webpage ([Twitter](#), [YouTube](#), [USDA Facebook](#), [Flickr](#) and our [blog](#)). Also, visitors can sign up for automated email updates through [GovDelivery](#) (red envelope icon) for topics of most interest, such as news releases, soils information, programs updates, etc.