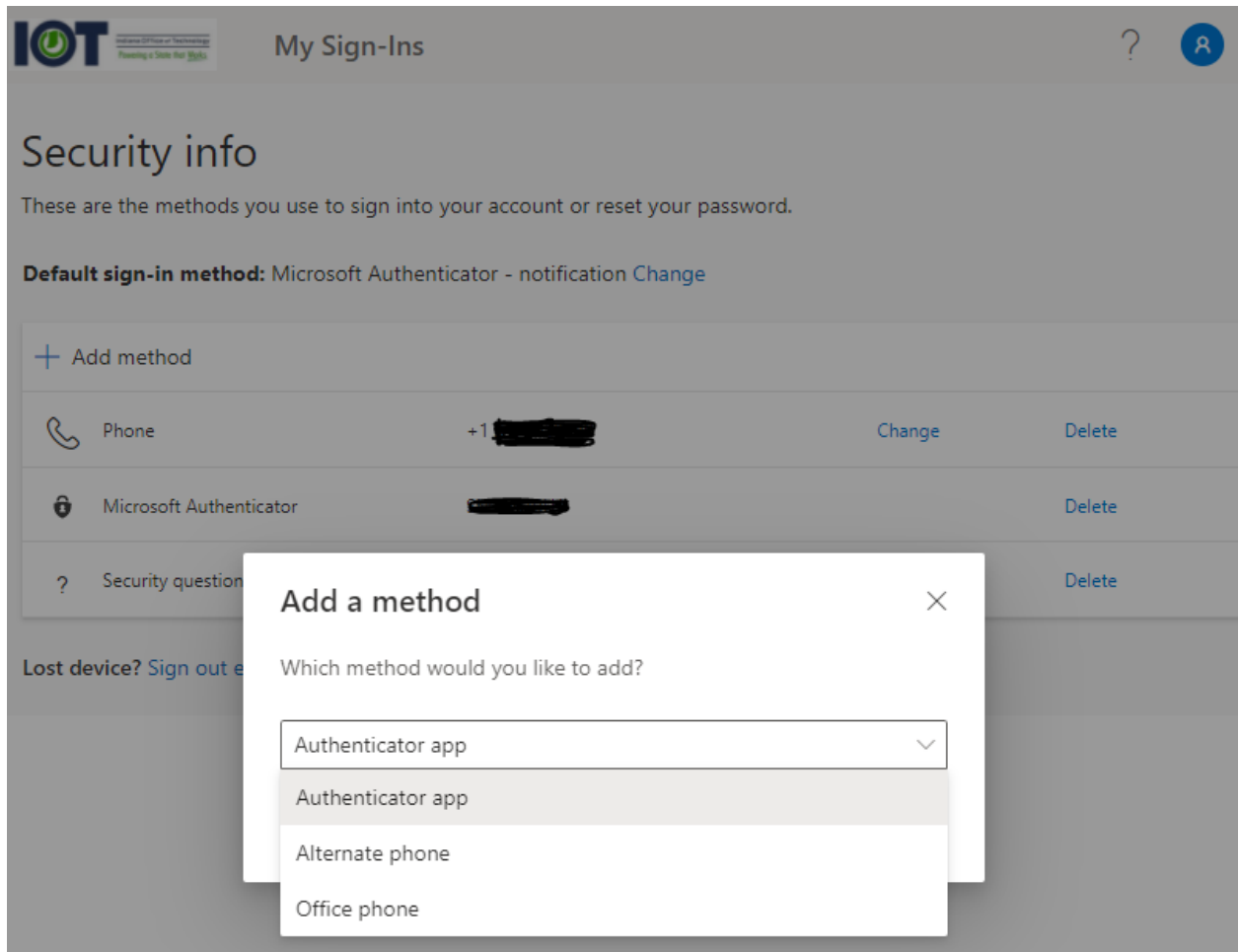


Authenticator Instructions:

Note: You can use any authenticator app, the below instructions are for Microsoft Authenticator.



1. Click Add (If you already have the Microsoft Authenticator App downloaded, skip to Step 4.)

Security info

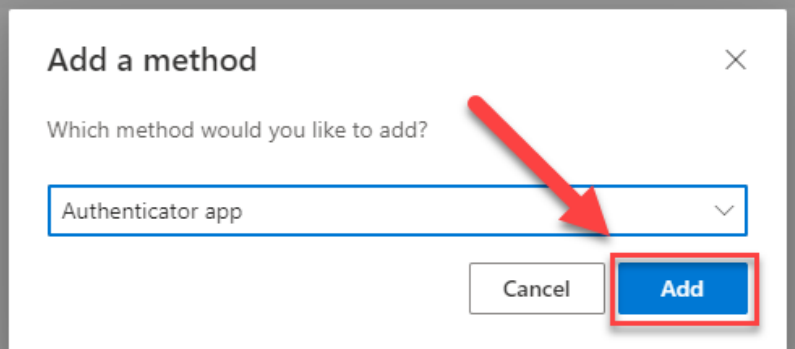
These are the methods you use to sign into your account or reset your password.

Default sign-in method: Microsoft Authenticator - notification [Change](#)

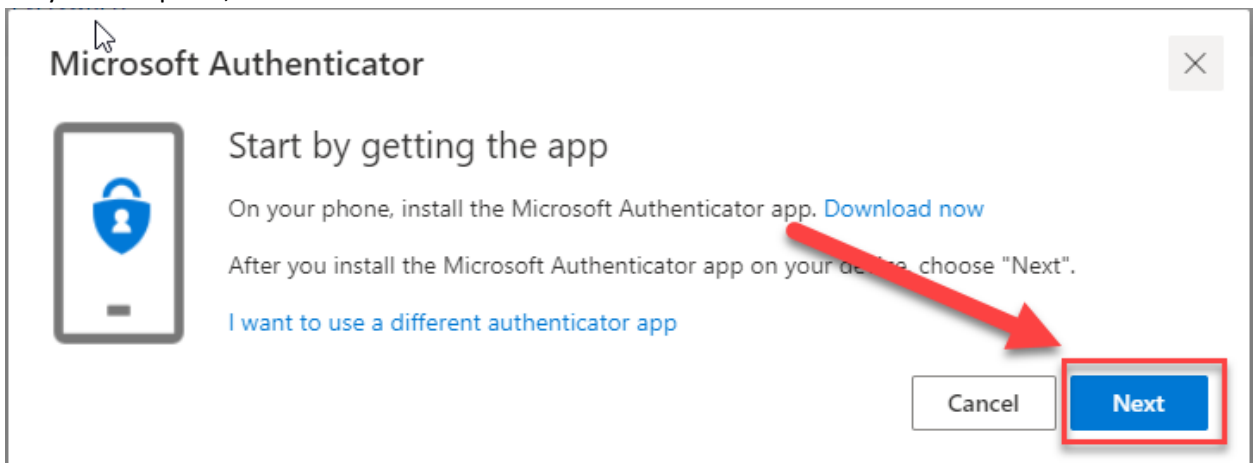
+ Add method

No items to display.

Lost device? [Sign out everywhere](#)



2. On your computer, click **Next**



Keep your account secure

Your organization requires you to set up the following methods of proving who you are.

Microsoft Authenticator



Set up your account

If prompted, allow notifications. Then add an account, and select "Work or school".



Back

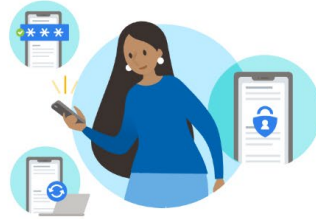
Next

[I want to set up a different method](#)

4. On your mobile device, in the **Microsoft Authenticator** app, if prompted, allow notifications. Select **Add Work or school account**.





Skip




Peace of mind for your digital life

Secure your accounts with multi-factor authentication.

 Sign in with Microsoft

 Add work or school account

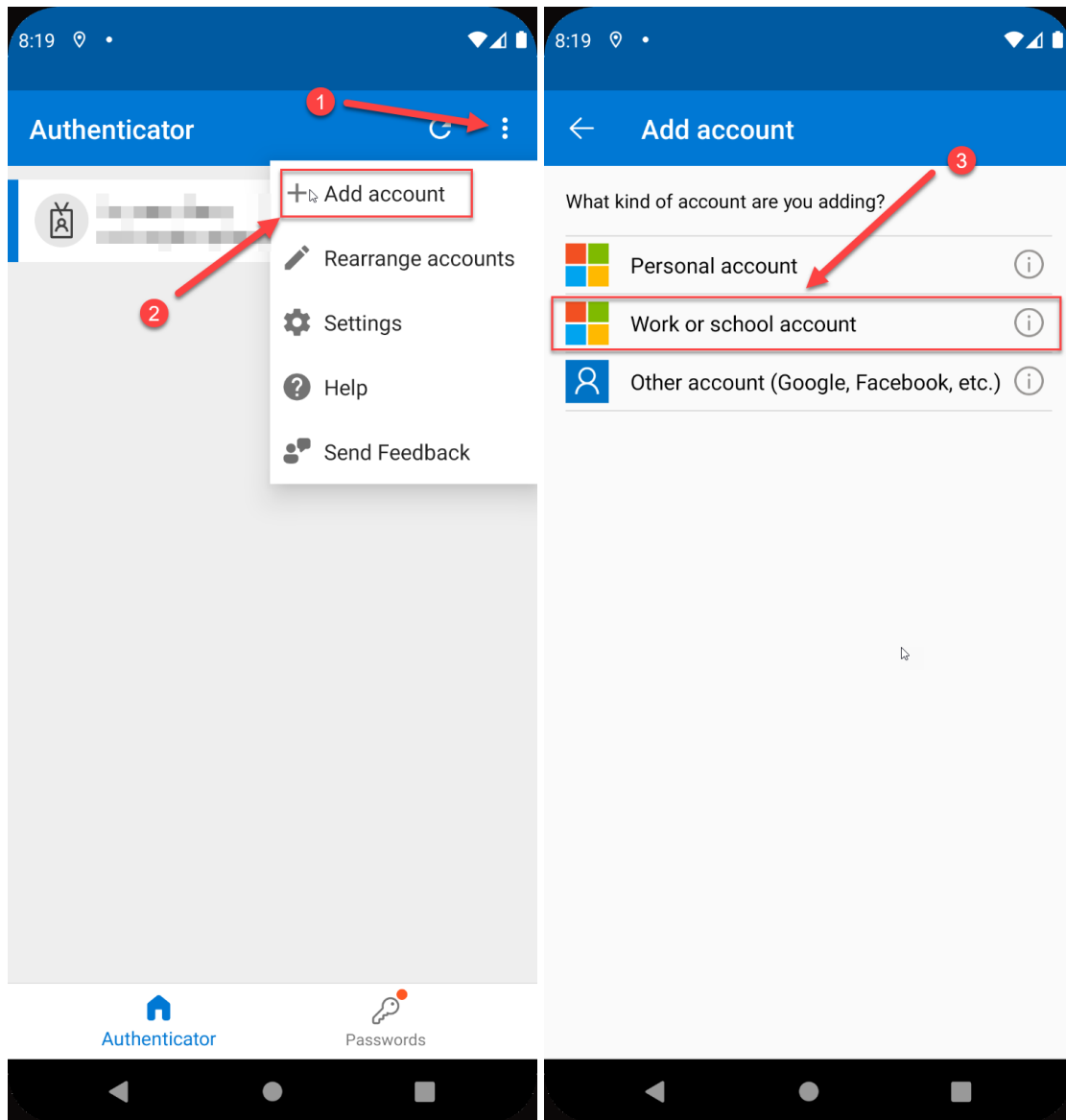
 Scan a QR code

QR code will be shared by your account provider (e.g. Microsoft, Google, Facebook) or organization

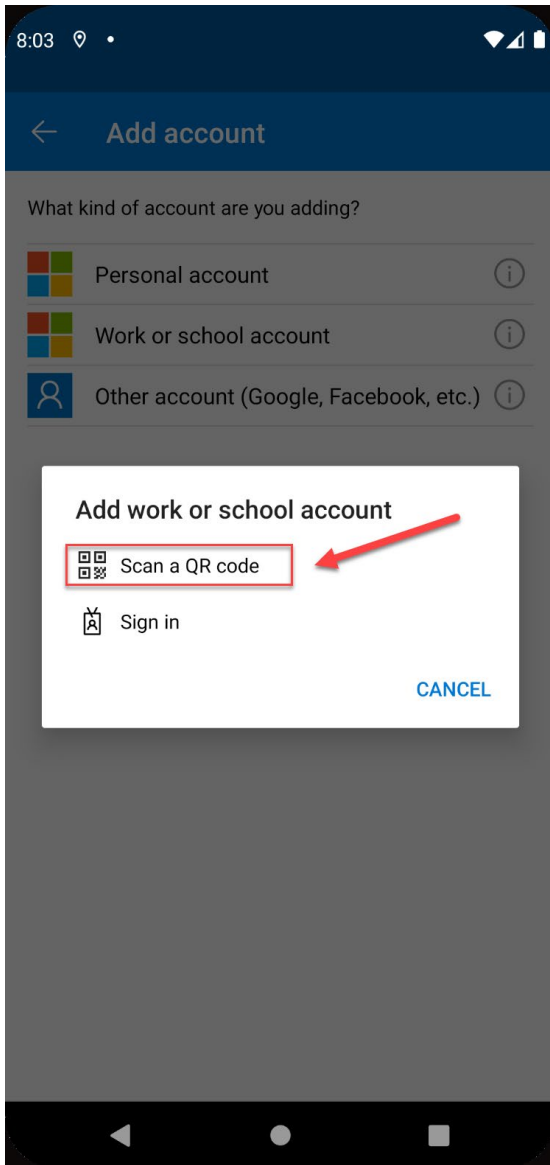
[Restore from backup](#)



OR press the menu button, then Select **+ Add account**, then select **Work or school account**



5. On your mobile device, in Add work or school account dialog box, select **Scan a QR code**



6. Using your mobile device camera, scan the QR code presented on your computer.
7. On your computer, click **Next**

Keep your account secure

Your organization requires you to set up the following methods of proving who you are.

Microsoft Authenticator

Scan the QR code

Use the Microsoft Authenticator app to scan the QR code. This will connect the Microsoft Authenticator app with your account.

After you scan the QR code, choose "Next".



Can't scan image?



Back

Next

[I want to set up a different method](#)

8. On your mobile device, in Microsoft Authenticator, Approve the sign in request

8:14



Authenticator



[Redacted]



 Approve sign-in?

[Redacted]

DENY **APPROVE**

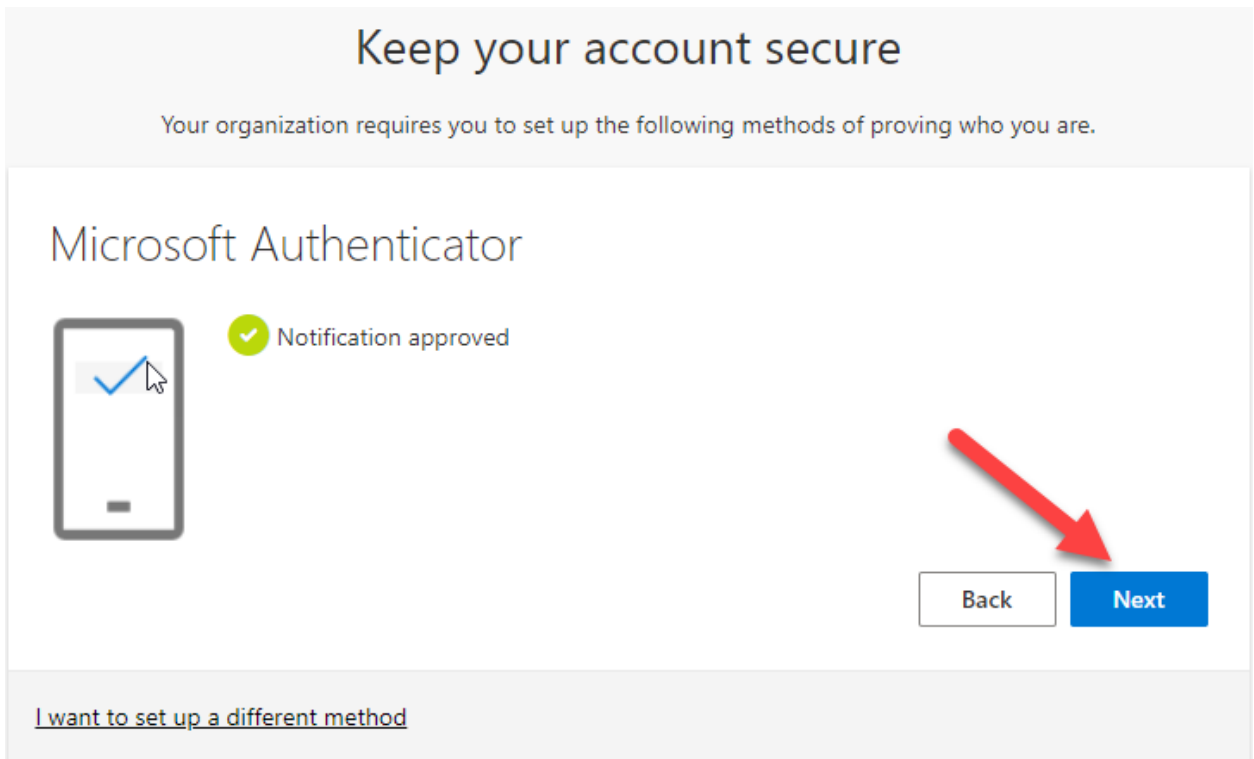


Authenticator

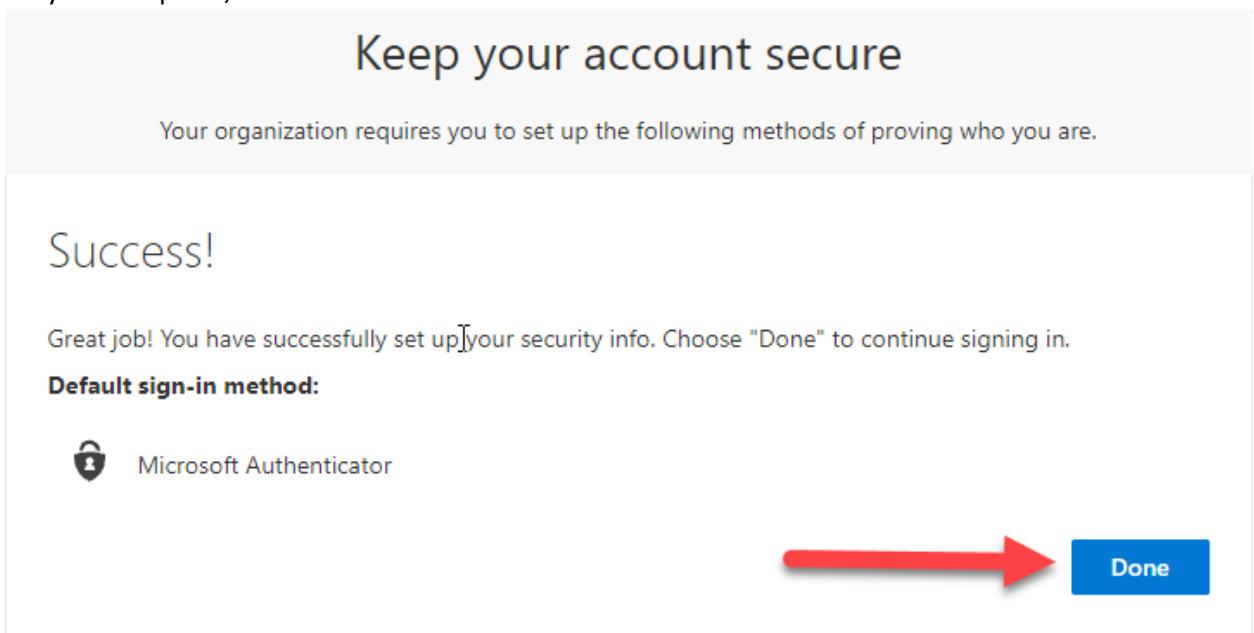


Passwords





10. On your computer, click **Done**



11. Success! If you have more than one account, such as an elevated or admin account, you will need to log out of your current one and into the other account as needed.

