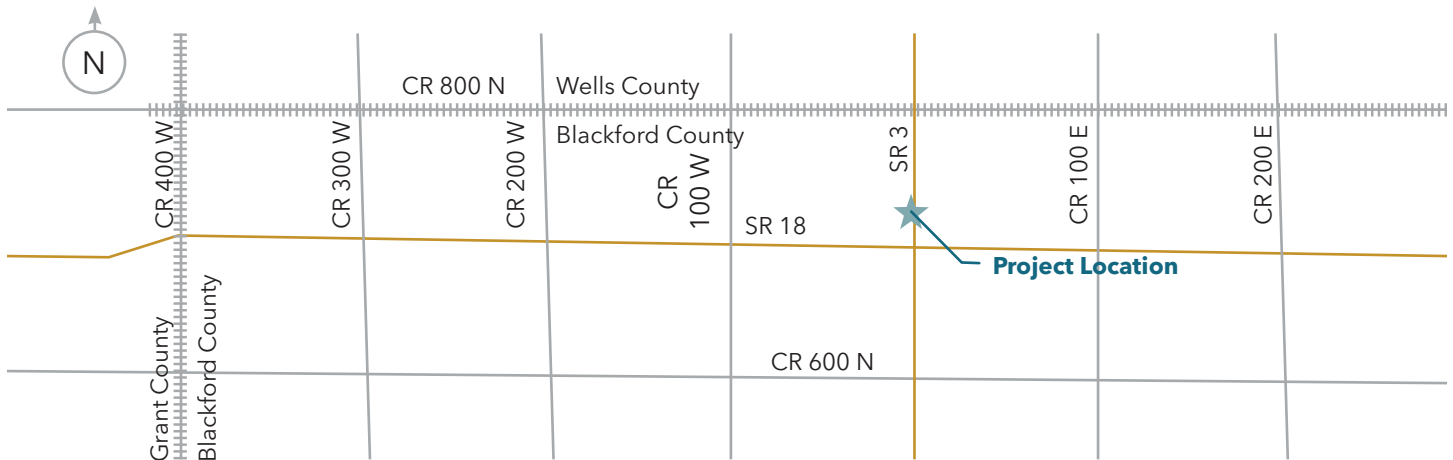


SR 3 over Prairie Creek Bridge Replacement in Blackford County – DES 2001993



PROJECT DETAILS

The purpose of this project is to address the deteriorating condition and inadequate hydraulic performance of the bridge carrying SR 3 over Prairie Creek in Blackford County. The project proposes to completely remove the existing bridge and construct a new 3-span, 102-foot-long concrete slab bridge. The new structure will provide a clear roadway width of 41'-8" with two 11'-0" thru travel lanes and a 11'-0" southbound right turn lane. The northbound acceleration lane, located north of the SR 3/SR 18 intersection, will be removed. The drive immediately southwest of the structure will be removed to

accommodate the longer structure and roadside protection. Approach roadway work will be required to tie the existing pavement into the new structure. Riprap will be placed on the spillslopes to prevent scour. Approximately 0.51 acres of permanent ROW will need to be acquired. The maintenance of traffic plan includes a complete road closure of SR 3 with an official state detour using SR 18, SR 5, and SR 218. The SR 3 and SR 18 intersection to the south of the structure will remain open during construction. Local roads may be used by local traffic. Access to all properties will be maintained throughout construction.

PROJECT INFORMATION:

Project Number: 2001993

Project Status: In Design

Anticipated Construction Start: Spring 2025

Estimated Construction Cost: Approx. \$1,920,000



For more information, contact INDOT:
855.463.6848 | INDOT4U.com
<https://www.in.gov/indot/2703.htm>