

APPROACH TABLE

LOCATION	DESCRIPTION (APPROACH TYPE OR CLASS)	WIDTH	LENGTH	RADII	GRADE				EXCAVATION		BORROW	QC/QA - HMA MATERIALS				HMA FOR APPROACHES		ASPHALT FOR TACK COAT	COMPACTED AGGREGATE NO. 53	COMPACTED AGGREGATE NO. 53	MILLING, APPROACH	MILLING, ASPHALT, 1.5 IN.	CONCRETE CURB	JOINT ADHESIVE, SURFACE	JOINT ADHESIVE, INTERMEDIATE	LIQUID ASPHALT SEALANT	SUBGRADE TREATMENT, TYPE II	SUBGRADE TREATMENT, TYPE IC	HMA PATCHING, TYPE B	SIDEWALK, CONCRETE	REMARKS	
					1	2	3	4	CUT	FILL		CYS	165	275	660	1100	165															275
					%	%	%	%					TON	TON	TON	TON	TON															TON
					FT	FT	FT	%					TON	TON	TON	TON	TON															TON
LINE A		32-44	1743						TBD	TBD	TBD	663	466	1169	488			1169.0		343.0		4648.0		6971.0	3486.0	663.0	1130	3808				
249+18.96, RT	Class II Drive	12.9	21.2	25,15	-5.00															6.69										40.16		
250+54.93, RT	Public Road Approach	24.0	115.5	40,40																46.31		307.11							277.78			
250+58.17, LT	Public Road Approach	24.0	115.5	40,40																42.60		324.89							255.56			
252+27.06, RT	Class II Drive	12.0	21.3	25,15	-5.90															6.37									38.22			
253+92.71, LT	Mod. Class V Drive	12.7	6.1	25,25	-2.87															5.72												
255+20.97, RT	Class II Drive	12.0	21.3	25,15	1.23															6.31									37.88			
256+25.21, RT	Class IV Drive	40.0	16.2	20,20	1.32	-1.20														13.38									80.27			
257+47.81, RT	Class II Drive	13.1	21.0	25,15	-2.68															6.70									40.21			
Total This Sheet												663.0	466	1169	488	115.7	105.9	1169.0	134.1	343.0	632.0	4648.0		6971.0	3486.0	663.0	1900.4	3808.0				
PAY TOTAL												663	466	1169	488	116	106	1169	135	343	632	4648		6971	3486	663	1901	3808				

STRUCTURE DATA TABLE

STRUCTURE NUMBER	LOCATION				SIZE (in)	PIPE TYPE	MANHOLE, INLET, CATCH BASIN, OR SPECIALTY STRUCTURE	LENGTH (ft)	SKEW	COVER (ft)	FLOW LINE		SERVICE LIFE (yr.)	SITE DESIGNATION	pH	BACKFILL METHOD	STRUCTURAL BACKFILL, TYPE 2 CYS	STRUCTURAL BACKFILL, TYPE 5 CYS	GEOTEXTILES SYS	GRATED BOX END SECTION, TYPE 1 EA.	PIPE END SECTION EA.	REVTMENT RIPRAP TON	METAL COLLAR EA.	CONCRETE, CLASS A CYS	CONNECT TO STR. NO.	REMARKS
	STATION	LEFT	RIGHT	CROSS							UPSTREAM	DOWN STREAM														
											ELEV.	ELEV.														
10	244+32 "A"		X		12	2	INLET N12	8.0		VARIES	828.19	828.17	75	NA	7.0	1	3.5							11		
11	244+47 "A"		X				MANHOLE, TYPE C4			N/A	828.00	828.00	75	NA	7.0	1	0.0									
12	244+47 "A"	X			24															1					Add Safety Metal End Section Lt.	
13	244+60 "A"		X		12	2	INLET N12	5.5		VARIES	828.18	828.17	75	NA	7.0	1	2.9							11		
14	250+30	X			15	3		55.0		1.5	829.11	828.84	75	NA	7.0	1	12.7			2						
15	253+86	X			15	3		20.0		1.0	836.18	836.78	75	NA	7.0	1	3.3			2						
Total This Sheet																22.4	0.0	0.0	0	5	0.0	0	0.0			

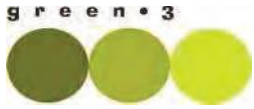
RECOMMENDED FOR APPROVAL _____ DESIGN ENGINEER _____ DATE _____	INDIANA DEPARTMENT OF TRANSPORTATION		HORIZONTAL SCALE N/A	BRIDGE FILE NO. N/A
	APPROACH & STRUCTURE DATA TABLES		VERTICAL SCALE N/A	DESIGNATION NO. 1800039
DESIGNED: BRW	DRAWN: BRW	SURVEY BOOK NO. N/A		SHEETS 22 of 35
CHECKED: BBB	CHECKED: MAR	CONTRACT NO. R-11560		PROJECT NO. 1800039

12/2/2020 4:53:09 PM S:\COL\4000--1099\4060\339\Drawings\CAD\Micros\Plan\Shit Misc Quantities.dgn

DES 1800039

Appendix C

Early Coordination



June 30, 2020

Re: 1800039, SR 15 and CR 18 Intersection Improvement Project– Elkhart County, Indiana

Agency Representative,

The Indiana Department of Transportation (INDOT) and the Federal Highway Administration (FHWA) intend to proceed with the SR 15 and CR 18 Intersection Improvement Project in Elkhart County, Indiana. This letter is part of the early coordination phase of the environmental review process. We are requesting comments from your area of expertise regarding any possible environmental effects associated with this project. Please use the above designation number (Des. No.) and description in your reply. We will incorporate your comments into a study of the project's environmental impacts.

This project is located at the intersection of SR 15 and CR 18, 1.03 miles south of US 20, in Elkhart County, Indiana. The current intersection is a controlled stop along CR 18, with SR 15 being free-flowing. SR 15 is classified as a principal arterial, with 12-foot lanes and 4-foot shoulders. SR 15 has a posted speed limit of 50 MPH. CR 18 consists of one 10-foot lane in each direction with no shoulders. CR 18 has a posted speed limit of 50 MPH.

The proposed project is to address the high rate of rear-end collisions due to left hand turns from SR 15 to CR 18. The preferred alternative is the addition of left turn lanes in each direction of SR 15. The turn lanes constructed will be approximately 585 feet in total length in each direction of SR 15. Rumble strips are to be added along the shoulders and centerlines of SR 15. Maintenance of traffic will consist of widening the road to one side and shifting traffic while the other side is under construction. It is anticipated that .25 acres of permanent right-of-way will be necessary. Tree removal is anticipated. Construction is anticipated to begin Summer 2023.

Land use in the vicinity of the project is mixed between agriculture, religious, residential, and commercial construction. There are several trees located around the project. The USFWS range-wide programmatic informal consultation for the Indiana bat and northern long-eared bat will be completed for this project. An historical investigation will be completed to satisfy the requirements of Section 106 of the National Historic Preservation Act. An ecological investigation into water resources in the project area will be completed to determine the presence or absence of jurisdictional water features.

Please respond with comments, questions, and concerns **within thirty (30) calendar days** from the date of this letter; if no response is received, it will be assumed that your agency feels that there are no adverse effects incurred as a result of this proposed project. However, should you find that an extension to the response time is necessary, a reasonable amount may be granted upon request. If you have any questions regarding this matter, please feel free to contact Jessica Parrish at Green 3, LLC at jessica@green3studio.com or 317-634-4110, or INDOT Project Manager, Steven Seculoff, at sseduloff@indot.in.gov or (260) 399-7337. Thank you in advance for your input on this project.

Sincerely,

A handwritten signature in cursive script that reads "Jessica Parrish".

Jessica Parrish
Green 3, LLC

Enclosures:

Mailing List
Project Maps
Ground Level Photographs

SR 15 and CR 18 Intersection Improvement Project, Des No. 1800039

Early Coordination Letter sent to the Following Agencies:

Federal Highway Administration
Fort Wayne District
k.carmanygeorge@dot.gov

US Department of Housing and Urban Development
Chicago Regional Office
Melanie.h.castillo@hud.gov

Regional Environmental Coordinator
Midwest Regional Office
National Park Service
hector_santiago@nps.gov

U.S. Fish and Wildlife Service
Chesterton Sub-Field Office
Elizabeth_McCloskey@fws.gov

USACE Detroit District
Michiana Branch Office
Regadmin.LRE_RegAdmin@usace.army.mil

State Conservationist
Natural Resources Conservation Service
Rick.neilson@in.usda.gov

Indiana Geological & Water Survey
Online Submission:
<https://igs.indiana.edu/eassessmnt/>

Environmental Coordinator
Indiana Department of Natural Resources Division
of Fish and Wildlife
environmentalreview@dnr.in.gov

Indiana Department of Environmental Management
Online Submission
<https://www.in.gov/idem/5284.htm>

MS4 Coordinator
Elkhart, Indiana
4230 Elkhart Road
Elkhart, Indiana 46516
jheiliger@elkhartcounty.com

MACOG
Executive Director: James Turnwald
227 W. Jefferson Blvd.
1120 County/City Building
South Bend, IN 46601
macogdir@macog.com

Elkhart County Commissioners
117 North Second Street
Goshen, IN 46526
Ccommissioners@elkhartcounty.com

INDOT Public Hearings
reclark@indot.in.gov

INDOT Fort Wayne District
Karen Novak
KNovak@indot.IN.gov

Elkhart County Surveyor
Phil Barker
pbarker@elkhartcounty.com

Elkhart County Highway Supervisor
Ken Myers
kmyers@elkcohw.org

Elkhart County Council
John K. Letherman, President
johnl@fmstone.com

Middlebury Community Schools
Jane Allen, Superintendent
allenj@mcsin-k12.org

Middlebury Community Schools
Melissa Deak, Transportation Director
deakm@mcsin-k12.org

Prince of Peace Lutheran Church
Goshen, Indiana
popgoshen@gmail.com

INDOT Utilities and Railroad
Michael B. Jett, Director
mjett@indot.in.gov

Sole Source Aquifer Coordinator Ground Water and
Drinking Water Branch USEPA, Region 5 Val Bosscher,
Regional Office
bosscher.valerie@epa.gov



Organization and Project Information

Project ID:
Des. ID: DES 1800039
Project Title: SR 15 and CR 18 Intersection Improvement Project
Name of Organization: Green 3, LLC
Requested by: Jessica Parrish

Environmental Assessment Report

1. Geological Hazards:
 - Moderate liquefaction potential
2. Mineral Resources:
 - Bedrock Resource: Moderate Potential
 - Sand and Gravel Resource: High Potential
3. Active or abandoned mineral resources extraction sites:
 - None documented in the area

*All map layers from Indiana Map (maps.indiana.edu)

DISCLAIMER:

This document was compiled by Indiana University, Indiana Geological Survey, using data believed to be accurate; however, a degree of error is inherent in all data. This product is distributed "AS-IS" without warranties of any kind, either expressed or implied, including but not limited to warranties of suitability to a particular purpose or use. No attempt has been made in either the design or production of these data and document to define the limits or jurisdiction of any federal, state, or local government. The data used to assemble this document are intended for use only at the published scale of the source data or smaller (see the metadata links below) and are for reference purposes only. They are not to be construed as a legal document or survey instrument. A detailed on-the-ground survey and historical analysis of a single site may differ from these data and this document.

This information was furnished by Indiana Geological Survey

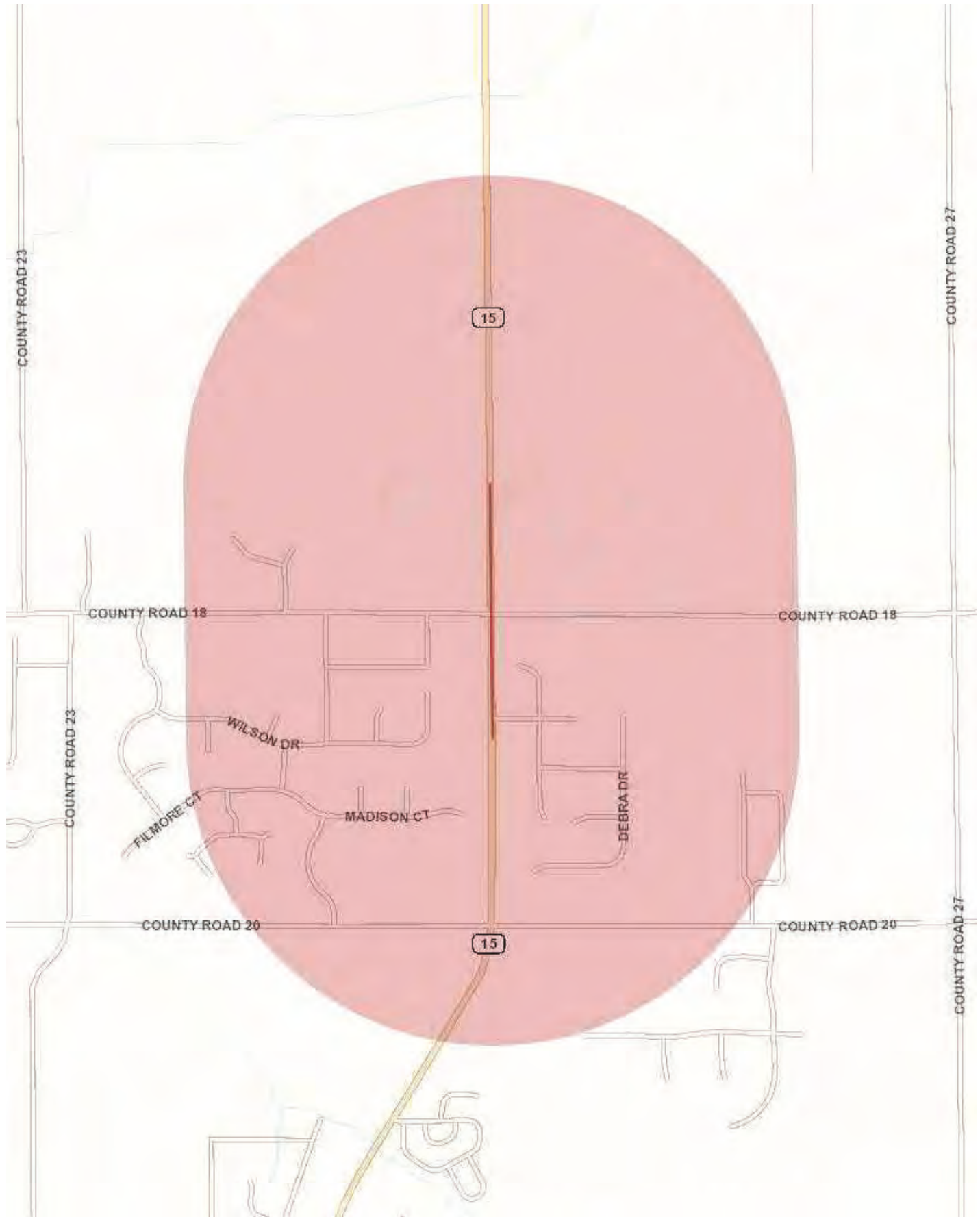
Address: 420 N. Walnut St., Bloomington, IN 47404

Email: IGSEnvir@indiana.edu

Phone: 812 855-7428

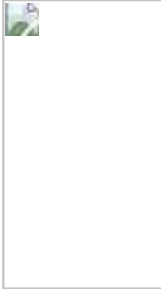
Date: July 09, 2020





Metadata:

- https://maps.indiana.edu/metadata/Geology/Seismic_Earthquake_Liquefaction_Potential.html
- https://maps.indiana.edu/metadata/Geology/Industrial_Minerals_Sand_Gravel_Resources.html
- https://maps.indiana.edu/metadata/Geology/Bedrock_Geology.html



Indiana Department of Environmental Management

We Protect Hoosiers and Our Environment.

100 North Senate Avenue - Indianapolis, IN 46204
(800) 451-6027 - (317) 232-8603 - www.idem.IN.gov

INDOT

Green 3, LLC
Jessica Parrish

, IN
Date

, IN

To Engineers and Consultants Proposing Roadway Construction Projects:

RE: DES 1800039. The addition of left hand turn lanes to both directions of SR 15 and intersection improvement at the intersection of SR15 and CR 18 in Elkhart County.

This letter from the Indiana Department of Environmental Management (IDEM) serves as a standardized response to enquiries inviting IDEM comments on roadway construction, reconstruction, or other improvement projects within existing roadway corridors when the proposed scope of the project is beneath the threshold requiring a formal National Environmental Policy Act-mandated Environmental Assessment or Environmental Impact Statement. As the letter attempts to address all roadway-related environmental topics of potential concern, it is possible that not every topic addressed in the letter will be applicable to your particular roadway project.

For additional information on specific roadway-related topics of interest, please visit the appropriate Web pages cited below, many of which provide contact information for persons within the various program areas who can answer questions not fully addressed in this letter. Also please be mindful that some environmental requirements may be subject to change and so each person intending to include a copy of this letter in their project documentation packet is advised to download the most recently revised version of the letter; found at: <http://www.in.gov/idem/5283.htm> (<http://www.in.gov/idem/5283.htm>).

To ensure that all environmentally-related issues are adequately addressed, IDEM recommends that you read this letter in its entirety, and consider each of the following issues as you move forward with the planning of your proposed roadway construction, reconstruction, or improvement project:

WATER AND BIOTIC QUALITY

1. Section 404 of the Clean Water Act requires that you obtain a permit from the U.S. Army Corps of Engineers (USACE) before discharging dredged or fill materials into any wetlands or other waters, such as rivers, lakes, streams, and ditches. Other activities regulated include the relocation, channelization, widening, or other such alteration of a stream, and the mechanical clearing (use of heavy construction equipment) of wetlands.

Thus, as a project owner or sponsor, it is your responsibility to ensure that no wetlands are disturbed without the proper permit. Although you may initially refer to the U.S. Fish and Wildlife Service National Wetland Inventory maps as a means of identifying potential areas of concern, please be mindful that those maps do not depict jurisdictional wetlands regulated by the USACE or the Department of Environmental Management. A valid jurisdictional wetlands determination can only be made by the USACE, using the 1987 Wetland Delineation Manual.

USACE recommends that you have a consultant check to determine whether your project will abut, or lie within, a wetland area. To view a list of consultants that have requested to be included on a list posted by the USACE on their Web site, see USACE Permits and Public Notices (<http://www.lrl.usace.army.mil/orf/default.asp>) and then click on "Information" from the menu on the right-hand side of that page. Their "Consultant List" is the fourth entry down on the "Information" page. Please note that the USACE posts all consultants that request to appear on the list, and that inclusion of any particular consultant on the list does not represent an endorsement of that consultant by the USACE, or by IDEM.

Much of northern Indiana (Newton, Lake, Porter, LaPorte, St. Joseph, Elkhart, LaGrange, Steuben, and Dekalb counties; large portions of Jasper, Starke, Marshall, Noble, Allen, and Adams counties; and lesser portions of Benton, White, Pulaski, Kosciusko, and Wells counties) is served by the USACE District Office in Detroit (313-226-6812). The central and southern portions of the state (large portions of Benton, White, Pulaski, Kosciusko, and Wells counties; smaller portions of Jasper, Starke, Marshall, Noble, Allen, and Adams counties; and all other Indiana counties located in north-central, central, and southern Indiana) are served by the USACE Louisville District Office (502-315-6733).

Additional information on contacting these U.S. Army Corps of Engineers (USACE) District Offices, government agencies with jurisdiction over wetlands, and other water quality issues, can be found at <http://www.in.gov/idem/4396.htm>. IDEM recommends that impacts to wetlands and other water resources be avoided to the fullest extent.

2. In the event a Section 404 wetlands permit is required from the USACE, you also must obtain a Section 401 Water Quality Certification from the IDEM Office of Water Quality Wetlands Program. To learn more about the Wetlands Program, visit: <http://www.in.gov/idem/4384.htm> (<http://www.in.gov/idem/4384.htm>).
3. If the USACE determines that a wetland or other water body is isolated and not subject to Clean Water Act regulation, it is still regulated by the state of Indiana . A State Isolated Wetland permit from IDEM's Office of Water Quality (OWQ) is required for any activity that results in the discharge of dredged or fill materials into isolated wetlands. To learn more about isolated wetlands, contact the OWQ Wetlands Program at 317-233-8488.
4. If your project will involve over a 0.5 acre of wetland impact, stream relocation, or other large-scale alterations to water bodies such as the creation of a dam or a water diversion, you should seek additional input from the OWQ Wetlands Program staff. Consult the Web at: <http://www.in.gov/idem/4384.htm> (<http://www.in.gov/idem/4384.htm>) for the appropriate staff contact to further discuss your project.
5. Work within the one-hundred year floodway of a given water body is regulated by the Department of Natural Resources, Division of Water. The Division issues permits for activities regulated under the follow statutes:
 - o IC 14-26-2 Lakes Preservation Act 312 IAC 11
 - o IC 14-26-5 Lowering of Ten Acre Lakes Act No related code

- o IC 14-28-1 Flood Control Act 310 IAC 6-1
- o IC 14-29-1 Navigable Waterways Act 312 IAC 6
- o IC 14-29-3 Sand and Gravel Permits Act 312 IAC 6
- o IC 14-29-4 Construction of Channels Act No related code

For information on these Indiana (statutory) Code and Indiana Administrative Code citations, see the DNR Web site at: <http://www.in.gov/dnr/water/9451.htm> (<http://www.in.gov/dnr/water/9451.htm>) . Contact the DNR Division of Water at 317-232-4160 for further information.

The physical disturbance of the stream and riparian vegetation, especially large trees overhanging any affected water bodies should be limited to only that which is absolutely necessary to complete the project. The shade provided by the large overhanging trees helps maintain proper stream temperatures and dissolved oxygen for aquatic life.

6. For projects involving construction activity (which includes clearing, grading, excavation and other land disturbing activities) that result in the disturbance of one (1), or more, acres of total land area, contact the Office of Water Quality – Watershed Planning Branch (317/233-1864) regarding the need for of a Rule 5 Storm Water Runoff Permit. Visit the following Web page
- o <http://www.in.gov/idem/4902.htm> (<http://www.in.gov/idem/4902.htm>)

To obtain, and operate under, a Rule 5 permit you will first need to develop a Construction Plan (<http://www.in.gov/idem/4917.htm#constreq>) (<http://www.in.gov/idem/4917.htm#constreq>), and as described in 327 IAC 15-5-6.5 (<http://www.in.gov/legislative/iac/T03270/A00150> [PDF] (<http://www.in.gov/legislative/iac/T03270/A00150.PDF>), pages 16 through 19). Before you may apply for a Rule 5 Permit, or begin construction, you must submit your Construction Plan to your county Soil and Water Conservation District (SWCD) (<http://www.in.gov/isda/soil/contacts/map.html>) (<http://www.in.gov/isda/soil/contacts/map.html>)).

Upon receipt of the construction plan, personnel of the SWCD or the Indiana Department of Environmental Management will review the plan to determine if it meets the requirements of 327 IAC 15-5. Plans that are deemed deficient will require re-submittal. If the plan is sufficient you will be notified and instructed to submit the verification to IDEM as part of the Rule 5 Notice of Intent (NOI) submittal. Once construction begins, staff of the SWCD or Indiana Department of Environmental Management will perform inspections of activities at the site for compliance with the regulation.

Please be mindful that approximately 149 Municipal Separate Storm Sewer System (MS4) areas are now being established by various local governmental entities throughout the state as part of the implementation of Phase II federal storm water requirements. All of these MS4 areas will eventually take responsibility for Construction Plan review, inspection, and enforcement. As these MS4 areas obtain program approval from IDEM, they will be added to a list of MS4 areas posted on the IDEM Website at: <http://www.in.gov/idem/4900.htm> (<http://www.in.gov/idem/4900.htm>).

If your project is located in an IDEM-approved MS4 area, please contact the local MS4 program about meeting their storm water requirements. Once the MS4 approves the plan, the NOI can be submitted to IDEM.

Regardless of the size of your project, or which agency you work with to meet storm water requirements, IDEM recommends that appropriate structures and techniques be utilized both during the construction phase, and after completion of the project, to minimize the impacts associated

with storm water runoff. The use of appropriate planning and site development and appropriate storm water quality measures are recommended to prevent soil from leaving the construction site during active land disturbance and for post construction water quality concerns. Information and assistance regarding storm water related to construction activities are available from the Soil and Water Conservation District (SWCD) offices in each county or from IDEM.

7. For projects involving impacts to fish and botanical resources, contact the Department of Natural Resources - Division of Fish and Wildlife (317/232-4080) for addition project input.
8. For projects involving water main construction, water main extensions, and new public water supplies, contact the Office of Water Quality - Drinking Water Branch (317-308-3299) regarding the need for permits.
9. For projects involving effluent discharges to waters of the State of Indiana , contact the Office of Water Quality - Permits Branch (317-233-0468) regarding the need for a National Pollutant Discharge Elimination System (NPDES) permit.
10. For projects involving the construction of wastewater facilities and sewer lines, contact the Office of Water Quality - Permits Branch (317-232-8675) regarding the need for permits.

AIR QUALITY

The above-noted project should be designed to minimize any impact on ambient air quality in, or near, the project area. The project must comply with all federal and state air pollution regulations. Consideration should be given to the following:

1. Regarding open burning, and disposing of organic debris generated by land clearing activities; some types of open burning are allowed (<http://www.in.gov/idem/4148.htm> (<http://www.in.gov/idem/4148.htm>)) under specific conditions. You also can seek an open burning variance from IDEM.

However, IDEM generally recommends that you take vegetative wastes to a registered yard waste composting facility or that the waste be chipped or shredded with composting on site (you must register with IDEM if more than 2,000 pounds is to be composted; contact 317/232-0066). The finished compost can then be used as a mulch or soil amendment. You also may bury any vegetative wastes (such as leaves, twigs, branches, limbs, tree trunks and stumps) onsite, although burying large quantities of such material can lead to subsidence problems, later on.

Reasonable precautions must be taken to minimize fugitive dust emissions from construction and demolition activities. For example, wetting the area with water, constructing wind barriers, or treating dusty areas with chemical stabilizers (such as calcium chloride or several other commercial products). Dirt tracked onto paved roads from unpaved areas should be minimized.

Additionally, if construction or demolition is conducted in a wooded area where blackbirds have roosted or abandoned buildings or building sections in which pigeons or bats have roosted for 3-5 years precautionary measures should be taken to avoid an outbreak of histoplasmosis. This disease is caused by the fungus *Histoplasma capsulatum*, which stems from bird or bat droppings that have accumulated in one area for 3-5 years. The spores from this fungus become airborne when the area is disturbed and can cause infections over an entire community downwind of the site. The

area should be wetted down prior to cleanup or demolition of the project site. For more detailed information on histoplasmosis prevention and control, please contact the Acute Disease Control Division of the Indiana State Department of Health at (317) 233-7272.

2. The U.S. EPA and the Surgeon General recommend that people not have long-term exposure to radon at levels above 4 pCi/L. (For a county-by-county map of predicted radon levels in Indiana, visit: <http://www.in.gov/idem/4145.htm> (<http://www.in.gov/idem/4145.htm>).

The U.S. EPA further recommends that all homes (and apartments within three stories of ground level) be tested for radon. If in-home radon levels are determined to be 4 pCi/L, or higher, EPA recommends a follow-up test. If the second test confirms that radon levels are 4 pCi/L, or higher, EPA recommends the installation of radon-reduction measures. (For a list of qualified radon testers and radon mitigation (or reduction) specialists visit: http://www.in.gov/isdh/regsvcs/radhealth/pdfs/radon_testers_mitigators_list.pdf (http://www.in.gov/isdh/regsvcs/radhealth/pdfs/radon_testers_mitigators_list.pdf)). It also is recommended that radon reduction measures be built into all new homes, particularly in areas like Indiana that have moderate to high predicted radon levels.

To learn more about radon, radon risks, and ways to reduce exposure visit: <http://www.in.gov/isdh/regsvcs/radhealth/radon.htm> (<http://www.in.gov/isdh/regsvcs/radhealth/radon.htm>), <http://www.in.gov/idem/4145.htm> (<http://www.in.gov/idem/4145.htm>), or <http://www.epa.gov/radon/index.html> (<http://www.epa.gov/radon/index.html>).

3. With respect to asbestos removal: all facilities slated for renovation or demolition (except residential buildings that have (4) four or fewer dwelling units and which will not be used for commercial purposes) must be inspected by an Indiana-licensed asbestos inspector prior to the commencement of any renovation or demolition activities. If regulated asbestos-containing material (RACM) that may become airborne is found, any subsequent demolition, renovation, or asbestos removal activities must be performed in accordance with the proper notification and emission control requirements.

If no asbestos is found where a renovation activity will occur, or if the renovation involves removal of less than 260 linear feet of RACM off of pipes, less than 160 square feet of RACM off of other facility components, or less than 35 cubic feet of RACM off of all facility components, the owner or operator of the project does not need to notify IDEM before beginning the renovation activity.

For questions on asbestos demolition and renovation activities, you can also call IDEM's Lead/Asbestos section at 1-888-574-8150.

However, in all cases where a demolition activity will occur (even if no asbestos is found), the owner or operator must still notify IDEM 10 working days prior to the demolition, using the form found at <http://www.in.gov/icpr/webfile/formsdiv/44593.pdf> (<http://www.in.gov/icpr/webfile/formsdiv/44593.pdf>).

Anyone submitting a renovation/demolition notification form will be billed a notification fee based upon the amount of friable asbestos containing material to be removed or demolished. Projects that involve the removal of more than 2,600 linear feet of friable asbestos containing materials on pipes, or 1,600 square feet or 400 cubic feet of friable asbestos containing material on other facility components, will be billed a fee of \$150 per project; projects below these amounts will be billed a fee of \$50 per project. All notification remitters will be billed on a quarterly basis.

For more information about IDEM policy regarding asbestos removal and disposal, visit: <http://www.in.gov/idem/4983.htm> (<http://www.in.gov/idem/4983.htm>).

4. With respect to lead-based paint removal: IDEM encourages all efforts to minimize human exposure to lead-based paint chips and dust. IDEM is particularly concerned that young children exposed to lead can suffer from learning disabilities. Although lead-based paint abatement efforts are not mandatory, any abatement that is conducted within housing built before January 1, 1978, or a child-occupied facility is required to comply with all lead-based paint work practice standards, licensing and notification requirements. For more information about lead-based paint removal visit: <http://www.in.gov/isdh/19131.htm> (<http://www.in.gov/isdh/19131.htm>).
5. Ensure that asphalt paving plants are permitted and operate properly. The use of cutback asphalt, or asphalt emulsion containing more than seven percent (7%) oil distillate, is prohibited during the months April through October. See 326 IAC 8-5-2, Asphalt Paving Rule (<http://www.ai.org/legislative/iac/T03260/A00080.PDF> (<http://www.ai.org/legislative/iac/T03260/A00080.PDF>)).
6. If your project involves the construction of a new source of air emissions or the modification of an existing source of air emissions or air pollution control equipment, it will need to be reviewed by the IDEM Office of Air Quality (OAQ). A registration or permit may be required under 326 IAC 2 (View at: www.ai.org/legislative/iac/t03260/a00020.pdf (<http://www.ai.org/legislative/iac/t03260/a00020.pdf>)). New sources that use or emit hazardous air pollutants may be subject to Section 112 of the Clean Air Act and corresponding state air regulations governing hazardous air pollutants.
7. For more information on air permits visit: <http://www.in.gov/idem/4223.htm> (<http://www.in.gov/idem/4223.htm>), or to initiate the IDEM air permitting process, please contact the Office of Air Quality Permit Reviewer of the Day at (317) 233-0178 or OAMPROD atdem.state.in.us.

LAND QUALITY

In order to maintain compliance with all applicable laws regarding contamination and/or proper waste disposal, IDEM recommends that:

1. If the site is found to contain any areas used to dispose of solid or hazardous waste, you need to contact the Office of Land Quality (OLQ) at 317-308-3103.
2. All solid wastes generated by the project, or removed from the project site, need to be taken to a properly permitted solid waste processing or disposal facility. For more information, visit <http://www.in.gov/idem/4998.htm> (<http://www.in.gov/idem/4998.htm>).
3. If any contaminated soils are discovered during this project, they may be subject to disposal as hazardous waste. Please contact the OLQ at 317-308-3103 to obtain information on proper disposal procedures.
4. If PCBs are found at this site, please contact the Industrial Waste Section of OLQ at 317-308-3103 for information regarding management of any PCB wastes from this site.
5. If there are any asbestos disposal issues related to this site, please contact the Industrial Waste Section of OLQ at 317-308-3103 for information regarding the management of asbestos wastes (Asbestos removal is addressed above, under Air Quality).

6. If the project involves the installation or removal of an underground storage tank, or involves contamination from an underground storage tank, you must contact the IDEM Underground Storage Tank program at 317/308-3039. See: <http://www.in.gov/idem/4999.htm> (<http://www.in.gov/idem/4999.htm>).

FINAL REMARKS

Should you need to obtain any environmental permits in association with this proposed project, please be mindful that IC 13-15-8 requires that you notify all adjoining property owners and/or occupants within ten days your submittal of each permit application. However, if you are seeking multiple permits, you can still meet the notification requirement with a single notice if all required permit applications are submitted with the same ten day period.

Should the scope of the proposed project be expanded to the extent that a National Environmental Policy Act Environmental Assessment (EA) or Environmental Impact Statement (EIS) is required, IDEM will actively participate in any early interagency coordination review of the project.

Meanwhile, please note that this letter does not constitute a permit, license, endorsement or any other form of approval on the part of the Indiana Department of Environmental Management regarding any project for which a copy of this letter is used. Also note that it is the responsibility of the project engineer or consultant using this letter to ensure that the most current draft of this document, which is located at <http://www.in.gov/idem/5284.htm> (<http://www.in.gov/idem/5284.htm>), is used.

Signature(s) of the Applicant

I acknowledge that the following proposed roadway project will be financed in part, or in whole, by public monies.

Project Description

DES 1800039. The addition of left hand turn lanes to both directions of SR 15 and intersection improvement at the intersection of SR15 and CR 18 in Elkhart County.

With my signature, I do hereby affirm that I have read the letter from the Indiana Department of Environment that appears directly above. In addition, I understand that in order to complete that project in which I am interested, with a minimum of impact to the environment, I must consider all the issues addressed in the aforementioned letter, and further, that I must obtain any required permits.

Date: 9/14/2020

Signature of the INDOT
Project Engineer or Other Responsible Agent 

Date: 7/10/2020

Signature of the
For Hire Consultant

Jessica Parrish

Jessica Parrish

July 29, 2021

Jessica Parrish
Green 3, LLC
1104 Prospect Street
Indianapolis, Indiana 46203

Dear Ms. Parrish,

The proposed project to make intersection improvements at State Road 15 and County Road 18 in Elkhart County, Indiana (Des No. 1800039), as referred to in your letters received June 30, 2021, will cause a conversion of prime farmland.

The attached packet of information is for your use completing Parts VI and VII of the AD-1106. After completion, the federal funding agency needs to forward one copy to NRCS for our records.

If you need additional information, please contact John Allen at 317-295-5859.

Sincerely,

RICHARD Digitally signed by
RICHARD NEILSON
NEILSON Date: 2021.07.29
15:41:50 -04'00'

RICK NEILSON
State Soil Scientist

Enclosures

Helping People Help the Land.



USDA is an equal opportunity provider, employer and lender.

FARMLAND CONVERSION IMPACT RATING

PART I (To be completed by Federal Agency)		Date Of Land Evaluation Request				
Name of Project DES1800039_SR15_SR18_rev		Federal Agency Involved				
Proposed Land Use		County and State Elkhart County, Indiana				
PART II (To be completed by NRCS)		Date Request Received By NRCS 6/30/2021	Person Completing Form: JRA			
Does the site contain Prime, Unique, Statewide or Local Important Farmland? (If no, the FPPA does not apply - do not complete additional parts of this form)		YES <input checked="" type="checkbox"/> NO <input type="checkbox"/>	Acres Irrigated	Average Farm Size 105 ac		
Major Crop(s) Corn	Farmable Land In Govt. Jurisdiction Acres: 257229 % 86	Amount of Farmland As Defined in FPPA Acres: 16559 % 55				
Name of Land Evaluation System Used LESA	Name of State or Local Site Assessment System	Date Land Evaluation Returned by NRCS 7/29/2021				
PART III (To be completed by Federal Agency)		Alternative Site Rating				
		Site A	Site B	Site C	Site D	
A. Total Acres To Be Converted Directly						
B. Total Acres To Be Converted Indirectly						
C. Total Acres In Site						
PART IV (To be completed by NRCS) Land Evaluation Information						
A. Total Acres Prime And Unique Farmland		0.05				
B. Total Acres Statewide Important or Local Important Farmland		0.00				
C. Percentage Of Farmland in County Or Local Govt. Unit To Be Converted		<0.001				
D. Percentage Of Farmland in Govt. Jurisdiction With Same Or Higher Relative Value		70				
PART V (To be completed by NRCS) Land Evaluation Criterion Relative Value of Farmland To Be Converted (Scale of 0 to 100 Points)		58				
PART VI (To be completed by Federal Agency) Site Assessment Criteria (Criteria are explained in 7 CFR 658.5 b. For Corridor project use form NRCS-CPA-106)		Maximum Points	Site A	Site B	Site C	Site D
1. Area In Non-urban Use		(15)	14			
2. Perimeter In Non-urban Use		(10)	8			
3. Percent Of Site Being Farmed		(20)	0			
4. Protection Provided By State and Local Government		(20)	0			
5. Distance From Urban Built-up Area		(15)	5			
6. Distance To Urban Support Services		(15)	5			
7. Size Of Present Farm Unit Compared To Average		(10)	3			
8. Creation Of Non-farmable Farmland		(10)	0			
9. Availability Of Farm Support Services		(5)	5			
10. On-Farm Investments		(20)	10			
11. Effects Of Conversion On Farm Support Services		(10)	0			
12. Compatibility With Existing Agricultural Use		(10)	0			
TOTAL SITE ASSESSMENT POINTS		160	50	0	0	0
PART VII (To be completed by Federal Agency)						
Relative Value Of Farmland (From Part V)		100	58	0	0	0
Total Site Assessment (From Part VI above or local site assessment)		160	50	0	0	0
TOTAL POINTS (Total of above 2 lines)		260	108	0	0	0
Site Selected: A	Date Of Selection 8/2/2021	Was A Local Site Assessment Used? YES <input type="checkbox"/> NO <input checked="" type="checkbox"/>				
Reason For Selection: Meets the project purpose and need with the least amount of impacts to adjacent properties.						
Name of Federal agency representative completing this form: Erin Mulryan					Date: 8/2/2021	

(See Instructions on reverse side)

Form AD-1006 (03-02)

From: [Bosscher, Valerie](#)
To: [Jessica Parrish](#)
Subject: RE: Early Coordination Packet (DES 180039)_SR15/CR18
Date: Tuesday, July 14, 2020 4:07:32 PM
Attachments: [image001.png](#)

Dear Ms. Parrish:

Thank you for the additional information.

I have reviewed the information you provided regarding anticipated intersection improvements at State Road 15 and County Road 18 (1.03 miles South of US 20) in Elkhart County, Indiana. Based on the information provided, this project is not likely to contaminate the St. Joseph Sole Source Aquifer, designated under the authority of the Safe Drinking Water Act, Section 1424(e), so as to create a significant hazard to public health and no further review under the Sole Source Aquifer Program should be necessary. Please inform the Region 5 Sole Source Aquifer Program if future developments significantly change the scope or potential impacts of the project.

Based on available information, water well(s) are located on properties near the anticipated construction activities. If not already completed, the project team should inspect the anticipated construction and staging areas to ensure there are no existing wells that could be disturbed or contaminated during the project. If any wells are present in or directly adjacent to the construction or staging areas, the wells should be clearly flagged and the area avoided to prevent damage or contamination of the wells.

As always, we suggest that during construction and maintenance, appropriate safeguards and best management practices are in place to ensure that local ground water supplies and neighboring drinking water wells are not endangered. Such precautions could include notifying general contractors that the site is sensitive, using certified clean fill materials where needed, using "green infrastructure" practices where possible to reduce potential impacts of stormwater run-off, securing adequate precautions for fueling/servicing large equipment, and developing contingency plans to handle the release of any hazardous materials.

Thank you for your cooperation. If you have any further questions, please contact me by email at bosscher.valerie@epa.gov or call me at (312) 886-6731.

Sincerely,

Val Bosscher
Sole Source Aquifer Coordinator
Ground Water and Drinking Water Branch

From: Jessica Parrish <jessica@green3studio.com>
Sent: Tuesday, July 14, 2020 10:47 AM

From: [McCloskey, Elizabeth](#)
To: [Jessica Parrish](#)
Subject: Re: [EXTERNAL] FW: Early Coordination Packet (DES 1800039)_ SR15/ CR 18
Date: Tuesday, July 14, 2020 2:01:32 PM
Attachments: [image002.png](#)

Good afternoon, because the proposed project will have minor impacts on natural resources, and no Federally endangered species are known to be present, the U.S. Fish and Wildlife Service will not be providing a comment letter.

Elizabeth McCloskey
U.S. Fish and Wildlife Service
Northern Indiana Suboffice
Ecological Services
Chesterton, Indiana

From: Jessica Parrish <jessica@green3studio.com>
Sent: Friday, July 10, 2020 10:18 AM
To: McCloskey, Elizabeth <elizabeth_mccloskey@fws.gov>
Subject: [EXTERNAL] FW: Early Coordination Packet (DES 1800039)_ SR15/ CR 18

This email has been received from outside of DOI - Use caution before clicking on links, opening attachments, or responding.

Good morning,

My apologies. This project is at the intersection of SR 15 and CR 18 in Elkhart County, Indiana. Your comments are requested in thirty (30) days.

Thank you,
Jessica Parrish



From: Jessica Parrish
Sent: Thursday, July 9, 2020 1:09 PM
To: Elizabeth_McCloskey@fws.gov

State of Indiana
DEPARTMENT OF NATURAL RESOURCES
Division of Fish and Wildlife
Early Coordination/Environmental Assessment

DNR #: ER-22824

Request Received: July 10, 2020

Requestor: Green 3 LLC
Jessica Parrish
1104 Prospect Street
Indianapolis, IN 46203

Project: SR 15 and CR 18 intersection improvement, 1.03 mile south of US 20; Des #1800039

County/Site info: Elkhart

The Indiana Department of Natural Resources has reviewed the above referenced project per your request. Our agency offers the following comments for your information and in accordance with the National Environmental Policy Act of 1969.

If our agency has regulatory jurisdiction over the project, the recommendations contained in this letter may become requirements of any permit issued. If we do not have permitting authority, all recommendations are voluntary.

Regulatory Assessment: Formal approval by the Department of Natural Resources under the regulatory programs administered by the Division of Water is not required for this project.

Natural Heritage Database: The Natural Heritage Program's data have been checked. To date, no plant or animal species listed as state or federally threatened, endangered, or rare have been reported to occur in the project vicinity.

Fish & Wildlife Comments: We recommend a mitigation plan be developed for any unavoidable habitat impacts that will occur. The DNR's Habitat Mitigation guidelines (and plant lists) can be found online at: <http://iac.iga.in.gov/iac/20200527-IR-312200284NRA.xml.pdf>.

Impacts to non-wetland forest of one (1) acre or more should be mitigated at a minimum 2:1 ratio. If less than one acre of non-wetland forest is removed in a rural setting, replacement should be at a 1:1 ratio based on area. Impacts to non-wetland forest under one (1) acre in an urban setting should be mitigated by planting five trees, at least 2 inches in diameter-at-breast height (dbh), for each tree which is removed that is 10" dbh or greater (5:1 mitigation based on the number of large trees) or by using the 1:1 replacement ratio based on area depending on the type of habitat impacted (individual canopy tree removal in an urban streetscape or park-like environment versus removal of habitat supporting a tree canopy, woody understory, and herbaceous layer). Impacts under 0.10 acre in an urban area may still involve the replacement of large diameter trees but typically do not require any additional mitigation or additional plantings beyond seeding and stabilizing disturbed areas. There are exceptions for high quality habitat sites however.

The additional measures listed below should be implemented to avoid, minimize, or compensate for impacts to fish, wildlife, and botanical resources:

1. Revegetate all bare and disturbed areas with a mixture of grasses (excluding all varieties of tall fescue) and legumes as soon as possible upon completion; low endophyte tall fescue may be used in the ditch bottom and side slopes only.
2. Minimize and contain within the project limits all tree and brush clearing.
3. Do not cut any trees suitable for Indiana bat or Northern Long-eared bat roosting (greater than 5 inches dbh, living or dead, with loose hanging bark, or with cracks, crevices, or cavities) from April 1 through September 30.
4. Appropriately designed measures for controlling erosion and sediment must be

THIS IS NOT A PERMIT

State of Indiana
DEPARTMENT OF NATURAL RESOURCES
Division of Fish and Wildlife
Early Coordination/Environmental Assessment

implemented to prevent sediment from entering the stream or leaving the construction site; maintain these measures until construction is complete and all disturbed areas are stabilized.

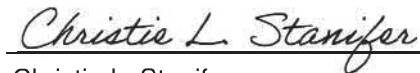
5. Seed and protect all disturbed streambanks and slopes not protected by other methods that are 3:1 or steeper with erosion control blankets that are heavy-duty, biodegradable, and net free or that use loose-woven / Leno-woven netting to minimize the entrapment and snaring of small-bodied wildlife such as snakes and turtles (follow manufacturer's recommendations for selection and installation); seed and apply mulch on all other disturbed areas.

6. Do not excavate or place fill in any riparian wetland.

Contact Staff:

Christie L. Stanifer, Environ. Coordinator, Fish & Wildlife

Our agency appreciates this opportunity to be of service. Please contact the above staff member at (317) 232-4080 if we can be of further assistance.



Date: August 7, 2020

Christie L. Stanifer
Environ. Coordinator
Division of Fish and Wildlife

Subject: RE: Des 1800039 SR 15/CR18 intersection, Elkhart Co.
Date: Tuesday, July 6, 2021 at 1:47:42 PM Eastern Daylight Time
From: DNR Environmental Review
To: Erin Mulryan
Attachments: image001.png, image002.png, image003.png, image004.png, image005.png, image006.png, image007.png, image008.png, image009.png, image010.png, image011.png, image012.png, image013.png, image014.png, image015.png, image016.png

Hello, Ms. Mulryan:

Despite the slight changes in the right-of-way amounts, the recommendations in our previous letter dated August 7, 2020, still apply.

Sincerely,

Christie L. Stanifer
Environmental Coordinator
Indiana Department of Natural Resources
Division of Fish & Wildlife
402 West Washington St, Room W273
Indianapolis, IN 46204
cstanifer@dnr.in.gov
Direct: (317) 232-8163
www.dnr.IN.gov

** Please let us know about the quality of our service by taking this [brief customer survey](#).*

From: Erin Mulryan <emulryan@sjcainc.com>
Sent: Saturday, July 03, 2021 5:27 PM
To: DNR Environmental Review <environmentalreview@dnr.IN.gov>
Subject: Des 1800039 SR 15/CR18 intersection, Elkhart Co.

****** This is an EXTERNAL email. Exercise caution. DO NOT open attachments or click links from unknown senders or unexpected email. ******

Hello, you were contacted on June 30, 2020 about the abovementioned project and the attached response was received. Since that time, the right of way estimates have changed. The current estimates are:
Reacquired ROW: 1.116 acres
Temporary ROW: 0.046 acre

Jessica Parrish

From: Taylor, Ashley <ATaylor@indot.IN.gov>
Sent: Thursday, August 27, 2020 1:53 PM
To: Jessica Parrish
Subject: RE: IPaC determination DES 1800039
Attachments: 1800039 Concurrence Verification Letter 08.27.2020.pdf

Good Afternoon Jessica,

I have reviewed the IPaC and generated the Concurrence Verification letter (see attached). Note that I made some minor modifications (see highlight sections below). Please let me know if anything is inaccurate here.

Approximately 0.09 acre of mature trees (including a Cedar tree) are planned to be removed. Construction of SR 15 will be completed first allowing tree removal to occur after active season (October 1, 2023 to March 31, 2024).

Have a great day!

Ashley Taylor

Environmental Manager II

5333 Hatfield Road

Fort Wayne, IN 46808

Office: (260) 969-8262

Email: ataylor@indot.in.gov



From: Jessica Parrish <jessica@green3studio.com>

Sent: Wednesday, August 26, 2020 8:16 AM

To: Taylor, Ashley <ATaylor@indot.IN.gov>

Subject: RE: IPaC determination DES 1800039

**** This is an EXTERNAL email. Exercise caution. DO NOT open attachments or click links from unknown senders or unexpected email. ****

Good morning Ashley,

I have updated the consistency letter and updated the amount of acres of trees to be removed and removed the gas relocation portion of the plan. I have been coordinating with the project engineer for the removal plan and reaffirmed with Steve Seculoff. He agreed with the plan as written. Please let me now if there are any issues.

Thank you,
Jessica Parrish



United States Department of the Interior



FISH AND WILDLIFE SERVICE

Indiana Ecological Services Field Office

620 South Walker Street

Bloomington, IN 47403-2121

Phone: (812) 334-4261 Fax: (812) 334-4273

<http://www.fws.gov/midwest/Endangered/section7/s7process/step1.html>

In Reply Refer To:

August 27, 2020

Consultation Code: 03E12000-2020-I-2116

Event Code: 03E12000-2020-E-10000

Project Name: SR 15 and CR 18 Intersection Improvement, Des. 1800039

Subject: Concurrence verification letter for the 'SR 15 and CR 18 Intersection Improvement, Des. 1800039' project under the revised February 5, 2018, FHWA, FRA, FTA Programmatic Biological Opinion for Transportation Projects within the Range of the Indiana Bat and Northern Long-eared Bat.

To whom it may concern:

The U.S. Fish and Wildlife Service (Service) has received your request to verify that the **SR 15 and CR 18 Intersection Improvement, Des. 1800039** (Proposed Action) may rely on the concurrence provided in the February 5, 2018, FHWA, FRA, FTA Programmatic Biological Opinion for Transportation Projects within the Range of the Indiana Bat and Northern Long-eared Bat (PBO) to satisfy requirements under Section 7(a)(2) of the Endangered Species Act of 1973 (ESA) (87 Stat. 884, as amended; 16 U.S.C 1531 *et seq.*).

Based on the information you provided (Project Description shown below), you have determined that the Proposed Action is within the scope and adheres to the criteria of the PBO, including the adoption of applicable avoidance and minimization measures, and may affect, but is not likely to adversely affect (NLAA) the endangered Indiana bat (*Myotis sodalis*) and/or the threatened Northern long-eared bat (*Myotis septentrionalis*).

The Service has 14 calendar days to notify the lead Federal action agency or designated non-federal representative if we determine that the Proposed Action does not meet the criteria for a NLAA determination under the PBO. If we do not notify the lead Federal action agency or designated non-federal representative within that timeframe, you may proceed with the Proposed Action under the terms of the NLAA concurrence provided in the PBO. This verification period allows Service Field Offices to apply local knowledge to implementation of the PBO, as we may identify a small subset of actions having impacts that were unanticipated. In such instances, Service Field Offices may request additional information that is necessary to verify inclusion of the proposed action under the PBO.

For Proposed Actions that include bridge/structure removal, replacement, and/or maintenance activities: If your initial bridge/structure assessments failed to detect Indiana bats, but you later detect bats during construction, please submit the Post Assessment Discovery of Bats at Bridge/Structure Form (User Guide Appendix E) to this Service Office. In these instances, potential incidental take of Indiana bats may be exempted provided that the take is reported to the Service.

If the Proposed Action is modified, or new information reveals that it may affect the Indiana bat and/or Northern long-eared bat in a manner or to an extent not considered in the PBO, further review to conclude the requirements of ESA Section 7(a)(2) may be required. If the Proposed Action may affect any other federally-listed or proposed species, and/or any designated critical habitat, additional consultation between the lead Federal action agency and this Service Office is required. If the proposed action has the potential to take bald or golden eagles, additional coordination with the Service under the Bald and Golden Eagle Protection Act may also be required. In either of these circumstances, please contact this Service Office.

Project Description

The following project name and description was collected in IPaC as part of the endangered species review process.

Name

SR 15 and CR 18 Intersection Improvement, Des. 1800039

Description

The project includes improvements to SR 15 at its intersection with CR 18, 1.03 miles south of US 20. The intersection is located north of the Town of Goshen in Elkhart County. SR 15 is classified as a principal arterial and consists of one 12-foot through lane in each direction with 4-foot shoulders on each side. CR 18 is classified as a minor collector to the west of SR 15 and a local road to the east of SR 15. CR 18 consists of one 10-foot lane in each direction with no shoulders. The preferred alternative for this project is the addition of 585-foot long and 12-foot wide left turn lanes in each direction of SR 15 as well as extending the existing drainage pipe that runs under SR 15. This alternative meets the purpose and need of the project by providing a solution to reduce crash rate and improve intersection safety. The current Indiana Design Manual requires a 585-foot left turn lane. The project ends approximately 945 feet to the north and of the intersection, approximately 1000 feet south of the intersection, and approximately 134 feet to the east and 134 feet west of the intersection to allow for the addition of turn lanes and shoulder reinforcement. The project requires approximately 0.25 acre of new permanent right-of-way (ROW) and the reacquisition of 1.2 acres of assumed ROW. No permanent lighting installation is planned however, temporary lighting may be used during construction. Project letting is anticipated July 2023.

Approximately 2.5 acres of vegetation will be removed or disturbed, primarily along the roadside to allow access to the roadway and drainage pipe improvement. A review of the USFWS database on, March 3, 2020 by INDOT, did not indicate the presence of endangered bat species in or within 0.5 mile of the project area. A site visit on June 19, 2020 by Green 3 Studio, LLC found no indication or presence of bats in the drainage pipe to the south of the project area. There are approximately 12 acres of mature trees considered suitable bat habitat, within 1000 feet of the project area. Approximately 0.09 acre of mature trees (including a Cedar tree) are planned to be removed. Construction of SR 15 will be completed first allowing tree removal to occur after active season (October 1, 2023 to March 31, 2024).

Determination Key Result

Based on your answers provided, this project(s) may affect, but is not likely to adversely affect the endangered Indiana bat and/or the threatened Northern long-eared bat, therefore, consultation with the U.S. Fish and Wildlife Service pursuant to Section 7(a)(2) of the Endangered Species Act of 1973 (ESA) (87 Stat. 884, as amended 16 U.S.C. 1531 *et seq.*) is required. However, also based on your answers provided, this project may rely on the concurrence provided in the revised February 5, 2018, FHWA, FRA, FTA Programmatic Biological Opinion for Transportation Projects within the Range of the Indiana Bat and Northern Long-eared Bat.

Qualification Interview

1. Is the project within the range of the Indiana bat^[1]?

[1] See [Indiana bat species profile](#)

Automatically answered

Yes

2. Is the project within the range of the Northern long-eared bat^[1]?

[1] See [Northern long-eared bat species profile](#)

Automatically answered

Yes

3. Which Federal Agency is the lead for the action?

A) *Federal Highway Administration (FHWA)*

4. Are *all* project activities limited to non-construction^[1] activities only? (examples of non-construction activities include: bridge/abandoned structure assessments, surveys, planning and technical studies, property inspections, and property sales)

[1] Construction refers to activities involving ground disturbance, percussive noise, and/or lighting.

No

5. Does the project include *any* activities that are **greater than** 300 feet from existing road/rail surfaces^[1]?

[1] Road surface is defined as the actively used [e.g. motorized vehicles] driving surface and shoulders [may be pavement, gravel, etc.] and rail surface is defined as the edge of the actively used rail ballast.

No

6. Does the project include *any* activities **within** 0.5 miles of a known Indiana bat and/or NLEB hibernaculum^[1]?

[1] For the purpose of this consultation, a hibernaculum is a site, most often a cave or mine, where bats hibernate during the winter (see suitable habitat), but could also include bridges and structures if bats are found to be hibernating there during the winter.

No

7. Is the project located **within** a karst area?

No

8. Is there *any* suitable^[1] summer habitat for Indiana Bat or NLEB **within** the project action area^[2]? (includes any trees suitable for maternity, roosting, foraging, or travelling habitat)

[1] See the Service's [summer survey guidance](#) for our current definitions of suitable habitat.

[2] The action area is defined as all areas to be affected directly or indirectly by the Federal action and not merely the immediate area involved in the action (50 CFR Section 402.02). Further clarification is provided by the [national consultation FAQs](#).

Yes

9. Will the project remove *any* suitable summer habitat^[1] and/or remove/trim any existing trees **within** suitable summer habitat?

[1] See the Service's [summer survey guidance](#) for our current definitions of suitable habitat.

Yes

10. Will the project clear more than 20 acres of suitable habitat per 5-mile section of road/rail?

No

11. Have presence/probable absence (P/A) summer surveys^{[1][2]} been conducted^{[3][4]} **within** the suitable habitat located within your project action area?

[1] See the Service's [summer survey guidance](#) for our current definitions of suitable habitat.

[2] Presence/probable absence summer surveys conducted within the fall swarming/spring emergence home range of a documented Indiana bat hibernaculum (contact local Service Field Office for appropriate distance from hibernacula) that result in a negative finding requires additional consultation with the local Service Field Office to determine if clearing of forested habitat is appropriate and/or if seasonal clearing restrictions are needed to avoid and minimize potential adverse effects on fall swarming and spring emerging Indiana bats.

[3] For projects within the range of either the Indiana bat or NLEB in which suitable habitat is present, and no bat surveys have been conducted, the transportation agency will assume presence of the appropriate species. This assumption of presence should be based upon the presence of suitable habitat and the capability of bats to occupy it because of their mobility.

[4] Negative presence/probable absence survey results obtained using the [summer survey guidance](#) are valid for a minimum of two years from the completion of the survey unless new information (e.g., other nearby surveys) suggest otherwise.

No

12. Does the project include activities **within documented Indiana bat habitat**^{[1][2]}?

[1] Documented roosting or foraging habitat – for the purposes of this consultation, we are considering documented habitat as that where Indiana bats and/or NLEB have actually been captured and tracked using (1) radio telemetry to roosts; (2) radio telemetry biangulation/triangulation to estimate foraging areas; or (3) foraging areas with repeated use documented using acoustics. Documented roosting habitat is also considered as suitable summer habitat within 0.25 miles of documented roosts.)

[2] For the purposes of this key, we are considering documented corridors as that where Indiana bats and/or NLEB have actually been captured and tracked to using (1) radio telemetry; or (2) treed corridors located directly between documented roosting and foraging habitat.

No

13. Will the removal or trimming of habitat or trees occur **within** suitable but **undocumented Indiana bat** roosting/foraging habitat or travel corridors?

Yes

14. What time of year will the removal or trimming of habitat or trees **within** suitable but **undocumented Indiana bat** roosting/foraging habitat or travel corridors occur^[1]?

[1] Coordinate with the local Service Field Office for appropriate dates.

B) During the inactive season

15. Does the project include activities **within documented NLEB habitat**^{[1][2]}?

[1] Documented roosting or foraging habitat – for the purposes of this consultation, we are considering documented habitat as that where Indiana bats and/or NLEB have actually been captured and tracked using (1) radio telemetry to roosts; (2) radio telemetry triangulation/triangulation to estimate foraging areas; or (3) foraging areas with repeated use documented using acoustics. Documented roosting habitat is also considered as suitable summer habitat within 0.25 miles of documented roosts.)

[2] For the purposes of this key, we are considering documented corridors as that where Indiana bats and/or NLEB have actually been captured and tracked to using (1) radio telemetry; or (2) treed corridors located directly between documented roosting and foraging habitat.

No

16. Will the removal or trimming of habitat or trees occur **within** suitable but **undocumented NLEB** roosting/foraging habitat or travel corridors?

Yes

17. What time of year will the removal or trimming of habitat or trees **within** suitable but **undocumented NLEB** roosting/foraging habitat or travel corridors occur?

B) During the inactive season

18. Will *any* tree trimming or removal occur **within** 100 feet of existing road/rail surfaces?

Yes

19. Will *any* tree trimming or removal occur **between** 100-300 feet of existing road/rail surfaces?

No

20. Are *all* trees that are being removed clearly demarcated?

Yes

21. Will the removal of habitat or the removal/trimming of trees include installing new or replacing existing **permanent** lighting?

No

22. Does the project include wetland or stream protection activities associated with compensatory wetland mitigation?

No

23. Does the project include slash pile burning?

No

24. Does the project include *any* bridge removal, replacement, and/or maintenance activities (e.g., any bridge repair, retrofit, maintenance, and/or rehabilitation work)?

Yes

25. Is there *any* suitable habitat^[1] for Indiana bat or NLEB **within** 1,000 feet of the bridge? (includes any trees suitable for maternity, roosting, foraging, or travelling habitat)

[1] See the Service's current [summer survey guidance](#) for our current definitions of suitable habitat.

Yes

26. Has a bridge assessment^[1] been conducted **within** the last 24 months^[2] to determine if the bridge is being used by bats?

[1] See [User Guide Appendix D](#) for bridge/structure assessment guidance

[2] Assessments must be completed no more than 2 years prior to conducting any work below the deck surface on all bridges that meet the physical characteristics described in the Programmatic Consultation, regardless of whether assessments have been conducted in the past. Due to the transitory nature of bat use, a negative result in one year does not guarantee that bats will not use that bridge/structure in subsequent years.

Yes

SUBMITTED DOCUMENTS

- *Bat Inspection Sheet.pdf* <https://ecos.fws.gov/ipac/project/7ND6M2LEMVBOPCLVH3EW4F5IEU/projectDocuments/23109805>

27. Did the bridge assessment detect *any* signs of Indiana bats and/or NLEBs roosting in/under the bridge (bats, guano, etc.)^[1]?

[1] If bridge assessment detects signs of *any* species of bats, coordination with the local FWS office is needed to identify potential threatened or endangered bat species. Additional studies may be undertaken to try to identify which bat species may be utilizing the bridge prior to allowing *any* work to proceed.

Note: There is a small chance bridge assessments for bat occupancy do not detect bats. Should a small number of bats be observed roosting on a bridge just prior to or during construction, such that take is likely to occur or does occur in the form of harassment, injury or death, the PBO requires the action agency to report the take. Report all unanticipated take within 2 working days of the incident to the USFWS. Construction activities may continue without delay provided the take is reported to the USFWS and is limited to 5 bats per project.

No

28. Will the bridge removal, replacement, and/or maintenance activities include installing new or replacing existing **permanent** lighting?

No

29. Does the project include the removal, replacement, and/or maintenance of *any* structure other than a bridge? (e.g., rest areas, offices, sheds, outbuildings, barns, parking garages, etc.)

No

30. Will the project involve the use of **temporary** lighting *during* the active season?

Yes

31. Is there *any* suitable habitat **within** 1,000 feet of the location(s) where **temporary** lighting will be used?

Yes

32. Will the project install new or replace existing **permanent** lighting?

No

33. Does the project include percussives or other activities (**not including tree removal/trimming or bridge/structure work**) that will increase noise levels above existing traffic/background levels?

No

34. Are *all* project activities that are **not associated with** habitat removal, tree removal/trimming, bridge and/or structure activities, temporary or permanent lighting, or use of percussives, limited to actions that DO NOT cause any additional stressors to the bat species?

Examples: lining roadways, unlighted signage , rail road crossing signals, signal lighting, and minor road repair such as asphalt fill of potholes, etc.

Yes

35. Will the project raise the road profile **above the tree canopy**?

No

36. Are the project activities that are not associated with habitat removal, tree removal/trimming, bridge and/or structure activities, temporary or permanent lighting, or use of percussives consistent with a No Effect determination in this key?

Automatically answered

Yes, other project activities are limited to actions that DO NOT cause any additional stressors to the bat species as described in the BA/BO

37. Is the habitat removal portion of this project consistent with a Not Likely to Adversely Affect determination in this key?

Automatically answered

Yes, because the tree removal/trimming that occurs outside of the Indiana bat's active season occurs greater than 0.5 miles from the nearest hibernaculum, is less than 100 feet from the existing road/rail surface, includes clear demarcation of the trees that are to be removed, and does not alter documented roosts and/or surrounding summer habitat within 0.25 miles of a documented roost.

38. Is the habitat removal portion of this project consistent with a Not Likely to Adversely Affect determination in this key?

Automatically answered

Yes, because the tree removal/trimming that occurs outside of the NLEB's active season occurs greater than 0.5 miles from the nearest hibernaculum, is less than 100 feet from the existing road/rail surface, includes clear demarcation of the trees that are to be removed, and does not alter documented roosts and/or surrounding summer habitat within 0.25 miles of a documented roost.

39. Is the bridge removal, replacement, or maintenance activities portion of this project consistent with a No Effect determination in this key?

Automatically answered

Yes, because the bridge has been assessed using the criteria documented in the BA and no signs of bats were detected

40. **General AMM 1**

Will the project ensure *all* operators, employees, and contractors working in areas of known or presumed bat habitat are aware of *all* FHWA/FRA/FTA (Transportation Agencies) environmental commitments, including all applicable Avoidance and Minimization Measures?

Yes

41. **Tree Removal AMM 1**

Can *all* phases/aspects of the project (e.g., temporary work areas, alignments) be modified, to the extent practicable, to avoid tree removal^[1] in excess of what is required to implement the project safely?

Note: Tree Removal AMM 1 is a minimization measure, the full implementation of which may not always be practicable. Projects may still be NLAA as long as Tree Removal AMMs 2, 3, and 4 are implemented and LAA as long as Tree Removal AMMs 3, 5, 6, and 7 are implemented.

[1] The word “trees” as used in the AMMs refers to trees that are suitable habitat for each species within their range. See the USFWS’ current summer survey guidance for our latest definitions of suitable habitat.

Yes

42. **Tree Removal AMM 3**

Can tree removal be limited to that specified in project plans and ensure that contractors understand clearing limits and how they are marked in the field (e.g., install bright colored flagging/fencing prior to any tree clearing to ensure contractors stay within clearing limits)?

Yes

43. **Tree Removal AMM 4**

Can the project avoid cutting down/removal of *all* (1) **documented**^[1] Indiana bat or NLEB roosts^[2] (that are still suitable for roosting), (2) trees **within** 0.25 miles of roosts, and (3) documented foraging habitat any time of year?

[1] The word documented means habitat where bats have actually been captured and/or tracked.

[2] Documented roosting or foraging habitat – for the purposes of this consultation, we are considering documented habitat as that where Indiana bats and/or NLEB have actually been captured and tracked using (1) radio telemetry to roosts; (2) radio telemetry biangulation/triangulation to estimate foraging areas; or (3) foraging areas with repeated use documented using acoustics. Documented roosting habitat is also considered as suitable summer habitat within 0.25 miles of documented roosts.)

Yes

44. **Lighting AMM 1**

Will *all* **temporary** lighting be directed away from suitable habitat during the active season?

Yes

Project Questionnaire

1. Have you made a No Effect determination for *all* other species indicated on the FWS IPaC generated species list?

N/A

2. Have you made a May Affect determination for *any* other species on the FWS IPaC generated species list?

N/A

3. How many acres^[1] of trees are proposed for removal between 0-100 feet of the existing road/rail surface?

[1] If described as number of trees, multiply by 0.09 to convert to acreage and enter that number.

0.09

4. Please describe the proposed bridge work:

Drainage pipe under SR 15, south of project area, will be extended.

5. Please state the timing of all proposed bridge work:

Summer 2023

6. Please enter the date of the bridge assessment:

6/19/2020

Avoidance And Minimization Measures (AMMs)

This determination key result includes the commitment to implement the following Avoidance and Minimization Measures (AMMs):

GENERAL AMM 1

Ensure all operators, employees, and contractors working in areas of known or presumed bat habitat are aware of all FHWA/FRA/FTA (Transportation Agencies) environmental commitments, including all applicable AMMs.

LIGHTING AMM 1

Direct temporary lighting away from suitable habitat during the active season.

TREE REMOVAL AMM 1

Modify all phases/aspects of the project (e.g., temporary work areas, alignments) to avoid tree removal.

TREE REMOVAL AMM 2

Apply time of year restrictions for tree removal when bats are not likely to be present, or limit tree removal to 10 or fewer trees per project at any time of year within 100 feet of existing road/rail surface and **outside of documented** roosting/foraging habitat or travel corridors; visual emergence survey must be conducted with no bats observed.

TREE REMOVAL AMM 3

Ensure tree removal is limited to that specified in project plans and ensure that contractors understand clearing limits and how they are marked in the field (e.g., install bright colored flagging/fencing prior to any tree clearing to ensure contractors stay within clearing limits).

TREE REMOVAL AMM 4

Do not remove **documented** Indiana bat or NLEB roosts that are still suitable for roosting, or trees within 0.25 miles of roosts, or **documented** foraging habitat any time of year.

Determination Key Description: FHWA, FRA, FTA Programmatic Consultation For Transportation Projects Affecting NLEB Or Indiana Bat

This key was last updated in IPaC on December 02, 2019. Keys are subject to periodic revision.

This decision key is intended for projects/activities funded or authorized by the Federal Highway Administration (FHWA), Federal Railroad Administration (FRA), and/or Federal Transit Administration (FTA), which may require consultation with the U.S. Fish and Wildlife Service (Service) under Section 7 of the Endangered Species Act (ESA) for the endangered **Indiana bat** (*Myotis sodalis*) and the threatened **Northern long-eared bat** (NLEB) (*Myotis septentrionalis*).

This decision key should only be used to verify project applicability with the Service's [February 5, 2018, FHWA, FRA, FTA Programmatic Biological Opinion for Transportation Projects](#). The programmatic biological opinion covers limited transportation activities that may affect either bat species, and addresses situations that are both likely and not likely to adversely affect either bat species. This decision key will assist in identifying the effect of a specific project/activity and applicability of the programmatic consultation. The programmatic biological opinion is not intended to cover all types of transportation actions. Activities outside the scope of the programmatic biological opinion, or that may affect ESA-listed species other than the Indiana bat or NLEB, or any designated critical habitat, may require additional ESA Section 7 consultation.

INDOT Bridge/Small Structure Bat Inspection Data Sheet (Rev 4/29/2016)

General Information		
Date of Inspection: 6/26/2020 Time of Inspection: 11:00 am	Initial Inspection <input checked="" type="checkbox"/> Follow-up Inspection <input type="checkbox"/> Construction <input type="checkbox"/>	Temp: 85 degrees F Wind: Precip:
County: Elkhart	Inspected by: Erin Mulryan, Jessica Parrish	Sunrise: Sunset:
GPS Northing: 41- 39'09.94" Easting: 85- 49'16.34" UTM Zone: 16	Contract Number: DES 1800039	Anticipated Start Date for Construction: Summer 2023

Bridge or Culvert	Bridge or Culvert
Stream or Road Crossed:	Station:
Bridge/Culvert number:	Number of Spans:
Type of Structure: <input type="checkbox"/> Concrete box beam <input type="checkbox"/> Steel beam <input type="checkbox"/> Concrete I-beam <input type="checkbox"/> Steel girder <input type="checkbox"/> Concrete bulb tee beam <input type="checkbox"/> Steel pony truss <input type="checkbox"/> Concrete arch <input type="checkbox"/> Welded steel thru girder <input type="checkbox"/> Concrete girder <input type="checkbox"/> Concrete box culvert <input type="checkbox"/> Concrete slab <input type="checkbox"/> Concrete pipe <input type="checkbox"/> Multi-plate arch <input checked="" type="checkbox"/> Corrugated steel pipe <input type="checkbox"/> Other (list):	Material: <input type="checkbox"/> Concrete <input checked="" type="checkbox"/> Steel <input type="checkbox"/> Other (describe): Shape: <input type="checkbox"/> Box Culvert <input type="checkbox"/> Pipe <input type="checkbox"/> Arch <input type="checkbox"/> Slab <input type="checkbox"/> Other (describe)
Searched entire structure? If not, why not? yes	Location of bats or signs of use (w/drawing and photos):
Bats Present? <input type="checkbox"/> Seen? <input type="checkbox"/> Heard? no	
In Clusters? Number of clusters:	
Number of bats in largest cluster:	
Approximate total number of bats found: 0	
Signs of previous bat use? <input type="checkbox"/> Guano <input type="checkbox"/> Staining no	

If Bats Present
Date and Time Project Supervisor was notified:
Name of Project Supervisor notified:



United States Department of the Interior



FISH AND WILDLIFE SERVICE

Indiana Ecological Services Field Office

620 South Walker Street

Bloomington, IN 47403-2121

Phone: (812) 334-4261 Fax: (812) 334-4273

<http://www.fws.gov/midwest/Endangered/section7/s7process/step1.html>

In Reply Refer To:

June 03, 2021

Consultation Code: 03E12000-2020-SLI-2116

Event Code: 03E12000-2021-E-06477

Project Name: SR 15 and CR 18 Intersection Improvement, Des. 1800039

Subject: Updated list of threatened and endangered species that may occur in your proposed project location or may be affected by your proposed project

To Whom It May Concern:

The attached species list identifies any federally threatened, endangered, proposed and candidate species that may occur within the boundary of your proposed project or may be affected by your proposed project. The list also includes designated critical habitat if present within your proposed project area or affected by your project. This list is provided to you as the initial step of the consultation process required under section 7(c) of the Endangered Species Act, also referred to as Section 7 Consultation.

Section 7 of the Endangered Species Act of 1973 requires that actions authorized, funded, or carried out by Federal agencies not jeopardize federally threatened or endangered species or adversely modify designated critical habitat. To fulfill this mandate, Federal agencies (or their designated non-federal representative) must consult with the Service if they determine their project “may affect” listed species or critical habitat.

Under 50 CFR 402.12(e) (the regulations that implement Section 7 of the Endangered Species Act) the accuracy of this species list should be verified after 90 days. This verification can be completed formally or informally. You may verify the list by visiting the ECOS-IPaC website <http://ecos.fws.gov/ipac/> at regular intervals during project planning and implementation and completing the same process you used to receive the attached list. As an alternative, you may contact this Ecological Services Field Office for updates.

Please use the species list provided and visit the U.S. Fish and Wildlife Service’s Region 3 Section 7 Technical Assistance website at - <http://www.fws.gov/midwest/endangered/section7/s7process/index.html>. This website contains step-by-step instructions which will help you determine if your project will have an adverse effect on listed species and will help lead you through the Section 7 process.

For all **wind energy projects** and **projects that include installing towers that use guy wires or are over 200 feet in height**, please contact this field office directly for assistance, even if no federally listed plants, animals or critical habitat are present within your proposed project or may be affected by your proposed project.

Although no longer protected under the Endangered Species Act, be aware that bald eagles are protected under the Bald and Golden Eagle Protection Act (16 U.S.C. 668 *et seq.*) and Migratory Bird Treaty Act (16 U.S.C. 703 *et seq.*), as are golden eagles. Projects affecting these species may require measures to avoid harming eagles or may require a permit. If your project is near an eagle nest or winter roost area, see our Eagle Permits website at <http://www.fws.gov/midwest/midwestbird/EaglePermits/index.html> to help you determine if you can avoid impacting eagles or if a permit may be necessary.

We appreciate your concern for threatened and endangered species. Please include the Consultation Tracking Number in the header of this letter with any request for consultation or correspondence about your project that you submit to our office.

Attachment(s):

- Official Species List

Official Species List

This list is provided pursuant to Section 7 of the Endangered Species Act, and fulfills the requirement for Federal agencies to "request of the Secretary of the Interior information whether any species which is listed or proposed to be listed may be present in the area of a proposed action".

This species list is provided by:

Indiana Ecological Services Field Office

620 South Walker Street
Bloomington, IN 47403-2121
(812) 334-4261

Project Summary

Consultation Code: 03E12000-2020-SLI-2116

Event Code: 03E12000-2021-E-06477

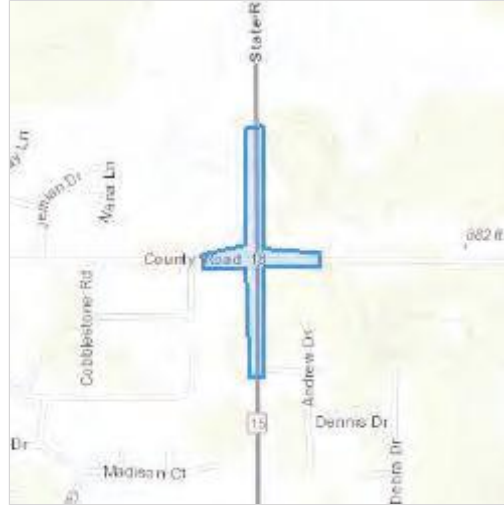
Project Name: SR 15 and CR 18 Intersection Improvement, Des. 1800039

Project Type: TRANSPORTATION

Project Description: The project includes improvements to SR 15 at its intersection with CR 18, 1.03 miles south of US 20. The intersection is located north of the Town of Goshen in Elkhart County. SR 15 is classified as a principal arterial and consists of one 12-foot through lane in each direction with 4-foot shoulders on each side. CR 18 is classified as a minor collector to the west of SR 15 and a local road to the east of SR 15. CR 18 consists of one 10-foot lane in each direction with no shoulders. The preferred alternative for this project is the addition of 585-foot long and 12-foot wide left turn lanes in each direction of SR 15 as well as extending the existing drainage pipe that runs under SR 15. This alternative meets the purpose and need of the project by providing a solution to reduce crash rate and improve intersection safety. The current Indiana Design Manual requires a 585-foot left turn lane. The project ends approximately 945 feet to the north and of the intersection, approximately 1000 feet south of the intersection, and approximately 134 feet to the east and 134 feet west of the intersection to allow for the addition of turn lanes and shoulder reinforcement. The project requires approximately 0.25 acre of new permanent right-of-way (ROW) and the reacquisition of 1.2 acres of assumed ROW. No permanent lighting installation is planned however, temporary lighting may be used during construction. Project letting is anticipated July 2023. Approximately 2.5 acres of vegetation will be removed or disturbed, primarily along the roadside to allow access to the roadway and drainage pipe improvement. A review of the USFWS database on, March 3, 2020 by INDOT, did not indicate the presence of endangered bat species in or within 0.5 mile of the project area. A site visit on June 19, 2020 by Green 3 Studio, LLC found no indication or presence of bats in the drainage pipe to the south of the project area. There are approximately 12 acres of mature trees considered suitable bat habitat, within 1000 feet of the project area. Approximately 0.09 acre of mature trees (including a Cedar tree) are planned to be removed. Construction of SR 15 will be completed first allowing tree removal to occur after active season (October 1, 2023 to March 31, 2024).

Project Location:

Approximate location of the project can be viewed in Google Maps: <https://www.google.com/maps/@41.652865793056,-85.82108615700179,14z>



Counties: Elkhart County, Indiana

Endangered Species Act Species

There is a total of 2 threatened, endangered, or candidate species on this species list.

Species on this list should be considered in an effects analysis for your project and could include species that exist in another geographic area. For example, certain fish may appear on the species list because a project could affect downstream species. Note that 1 of these species should be considered only under certain conditions.

IPaC does not display listed species or critical habitats under the sole jurisdiction of NOAA Fisheries¹, as USFWS does not have the authority to speak on behalf of NOAA and the Department of Commerce.

See the "Critical habitats" section below for those critical habitats that lie wholly or partially within your project area under this office's jurisdiction. Please contact the designated FWS office if you have questions.

-
1. [NOAA Fisheries](#), also known as the National Marine Fisheries Service (NMFS), is an office of the National Oceanic and Atmospheric Administration within the Department of Commerce.

Mammals

NAME	STATUS
Indiana Bat <i>Myotis sodalis</i> There is final critical habitat for this species. The location of the critical habitat is not available. Species profile: https://ecos.fws.gov/ecp/species/5949	Endangered
Northern Long-eared Bat <i>Myotis septentrionalis</i> No critical habitat has been designated for this species. This species only needs to be considered under the following conditions: <ul style="list-style-type: none"> ▪ Incidental take of the NLEB is not prohibited here. Federal agencies may consult using the 4(d) rule streamlined process. Transportation projects may consult using the programmatic process. See www.fws.gov/midwest/endangered/mammals/nleb/index.html Species profile: https://ecos.fws.gov/ecp/species/9045	Threatened

Critical habitats

THERE ARE NO CRITICAL HABITATS WITHIN YOUR PROJECT AREA UNDER THIS OFFICE'S JURISDICTION.

DES 1800039

Appendix D

Section 106 of the DHPA

Karen Wood

From: Miller, Shaun (INDOT) <smiller@indot.IN.gov>
Sent: Friday, April 16, 2021 9:47 AM
To: Karen Wood
Cc: Seculoff, Steven; Novak, Karen; Chris Jackson; Erin Mulryan; Carpenter, Patrick A
Subject: RE: FHWA; INDOT project; Des. 1800039 SR 15 at CR 18 Intersection Improvement, Elkhart Co. - MPPA re-coordination
Attachments: Minor Projects PA determination form_B-3_1800039_updated.pdf

Hi Karen,

Thank you for notifying us of the change in ROW. We've reviewed the changes and have no new concerns. We've updated the MPPA B-3 form to take into account the new ROW amounts. Please use this version of the MPPA determination form in the CE.

Thank you,

Shaun Miller
INDOT, Cultural Resources Office
Archaeology Team Lead
(317)416-0876

From: Karen Wood <kwood@sjcainc.com>
Sent: Wednesday, March 31, 2021 12:59 PM
To: Carpenter, Patrick A <PACarpenter@indot.IN.gov>; Miller, Shaun (INDOT) <smiller@indot.IN.gov>
Cc: Seculoff, Steven <SSeculoff@indot.IN.gov>; Novak, Karen <KNovak@indot.IN.gov>; Branigin, Susan <SBranigin@indot.IN.gov>; Chris Jackson <cjackson@sjcainc.com>; Erin Mulryan <emulryan@sjcainc.com>; Jessica Parrish <jparrish@sjcainc.com>
Subject: RE: FHWA; INDOT project; Des. 1800039 SR 15 at CR 18 Intersection Improvement, Elkhart Co. - MPPA re-coordination

**** This is an EXTERNAL email. Exercise caution. DO NOT open attachments or click links from unknown senders or unexpected email. ****

Hi Patrick and Shaun,

INDOT had previously approved this project under B-3 (see below email) on 9/11/2020. It has come to our attention that a parcel was left out inadvertently during the ROW count and there is more ROW included on this project. The scope remains the same as stated in the attached MPPA determination form.

Original ROW: 0.25 acre of permanent and 1.2 acre of re-acquisition
Current ROW: 0.046 acre of Temporary, 0.831 acre of permanent and 1.116 acre of re-acquisition

We had completed an archaeological report for this project as well. I have attached the revised plans for this project as well as the following shapefiles: original project area, the original Archaeological survey area, and the revised project area. We have placed these shapefiles on an aerial map for your reference. Would you please review this additional information for a revised MPPA determination?

Please let me know if you have any questions.

Date: 9/11/2020 **Updated** 4/16/21

Project Designation Number: 1800039

Route Number: SR 15

Project Description: Intersection Improvement with Added Turn Lanes at CR 18, 1.03 miles south of US 20

The proposed project is located at the intersection of SR 15 and CR 18 in Town of Goshen in Elkhart County, IN. The project area is approximately 1.03 miles south of US 20. SR 15 is classified as a principal arterial and consists of one 12-foot through lane in each direction with 4-foot shoulders on each side. CR 18 is classified as a minor collector to the west of SR 15 and a local road to the east of SR 15. CR 18 consists of one 10-foot lane in each direction with no shoulders. Both roads have a posted speed limit of 50 mph.

The purpose of the project is to provide a solution to reduce the crash rate and improve intersection safety. The need for the project lies in improving the safety at the intersection of State Road 15 (SR 15) at County Road 18 (CR 18). Drivers in either direction of SR 15 must stop when vehicles are waiting to turn left on CR 18. This results in a high volume of rear-end collisions of vehicles waiting to make the left turn. A RoadHAT analysis resulted in an Index of Crash Frequency (ICF) of 3.72 and an Index of Crash Cost (ICC) of 2.01. These values indicate that the intersection experiences an above- average crash frequency and safety improvements should be evaluated.

The preferred alternative for this project is the addition of 585 foot long and 12 foot wide left turn lanes in each direction of SR 15. The proposed improvements, right of way, and utility relocations will be designed such that future signalization can be accommodated without the need to reconstruct or acquire additional property. 1 (one) tree will be removed and both above and underground utilities will need to be relocated.

Along SR 15 to the south of CR 18, there is 40' of apparent existing right of way on each side of the centerline. To the north, there is 35' of apparent existing right of way on each side of the centerline. Along CR 18, the apparent existing right of way varies from 14' to 52' from the centerline. Based upon the Elkhart County GIS system, the right of way in the southeast quadrant may be the only parcel that has been properly recorded. It is expected, however, that 0.25 acres of permanent new right of way is anticipated for the proposed improvements and reacquisition of assumed right of way will require an additional 1.2 acres.

On March 31, 2021 INDOT, CRO was informed of that a parcel was inadvertently left out of the right-of-way totals at the time of the original submission. The current right-of-way amounts are: 0.046 acre of temporary; 0.831 acre of permanent; and 1.116 acre of re-acquisition. This modification does not change the above-ground analysis and the below archaeological assessment remains applicable because the archaeological reconnaissance examined a survey area of 2.75 acres. Therefore, there are no new cultural resource concerns.

Feature crossed (if applicable): N/A

City/Township: Jefferson Township

County: Elkhart

Information reviewed (please check all that apply):

General project location map USGS map Aerial photograph Interim Report

- Written description of project area General project area photos Soil survey data
 Previously completed historic property reports Previously completed archaeology reports
 Bridge Inspection Information SHAARD SHAARD GIS Streetview Imagery

Other (please specify):

Jackson, Christopher
 2020 A Phase Ia Archaeological Literature Review and Reconnaissance Survey for the Proposed Improvements of the SR 15 and CR 18 Intersection that is approximately 1.03 Miles South of US Highway 20 (Des 18000039) in Jefferson Township, Elkhart County, Indiana. Report on file, Indiana Department of Transportation, Cultural Resources Office, Indianapolis, In.

Please specify all applicable categories and condition(s) (conditions that are applicable are highlighted):

B-3. Construction of added travel, turning, or auxiliary lanes (e.g., bicycle, truck climbing, acceleration and deceleration lanes) and shoulder widening under the following conditions **[BOTH Condition A, which pertains to Archaeological Resources, and Condition B, which pertains to Above-Ground Resources, must be satisfied]**:

Condition A (Archaeological Resources)

One of the two conditions listed below must be met (*EITHER Condition i or Condition ii must be satisfied*):

- i. Work occurs in previously disturbed soils; *OR*
- ii. **Work occurs in undisturbed soils and an archaeological investigation conducted by the applicant and reviewed by INDOT Cultural Resources Office determines that no National Register-listed or potentially National Register-eligible archaeological resources are present within the project area.** If the archaeological investigation locates National Register-listed or potentially National Register-eligible archaeological resources, then full Section 106 review will be required. Copies of any archaeological reports prepared for the project will be provided to the DHPA and any archaeological site form information will be entered directly into the SHAARD by the applicant. The archaeological reports will also be available for viewing (by Tribes only) on INSCOPE.

Condition B (Above-Ground Resources)

Work does not occur adjacent to or within a National Register-listed or National Register-eligible district or individual above-ground resource.

Are there any commitments associated with this project? If yes, please explain and include in the Additional Comments Section below. yes no x

Does the project result in a de minimis impact to a Section 4(f) protected historic resource? If yes, please explain in the Additional Comments Section below. yes no x

Additional Comments:

Above-ground Resources

An INDOT Cultural Resources Office (CRO) historian, who met the Secretary of the Interior’s Professional Qualification Standards as per 36 CFR Part 61 performed a desktop review, checking the Indiana Register of Historic Sites and Structures (State Register) and National Register of Historic Places (National Register) lists for Elkhart County. No listed resources are located near the area.

The Indiana Historic Sites and Structures Inventory (IHSSI) was consulted via the Indiana State Historic Architectural and Archaeological Research Database (SHAARD), and the Indiana Historic Buildings, Bridges, and Cemeteries Map (IHBBCM). There are no surveyed properties in the project area.

From a review of aerial imagery and streetview, the properties in the project area are primarily modern residential and religious properties. There are some post-war resources built prior to 1970, but none appear to be National Register eligible individually or part of a potential historic district.

Based on the available information, as summarized above, no above-ground concerns exist.

Archaeological Resources

An INDOT Cultural Resources Office (CRO) archaeologist, who meets the Secretary of the Interior's Professional Qualification Standards as per 36 CFR Part 61, reviewed and approved of the archaeology report completed for this project (Jackson 2020). The reconnaissance examined approximately 2.75 acres through a combination of shovel probing, pedestrian survey, and visual inspection of disturbed areas. Forty-four shovel probes, plus two radials, were excavated with one site being identified. Site 12-E-502 consists of a small historic scatter found in the front yard of a late-19th century residence that represents occupational debris. INDOT, CRO concurs with this assessment. The site is not considered eligible for listing on the NRHP and no further work was recommended. Therefore, there are no archaeological concerns.

Accidental Discovery: If any archaeological artifacts or human remains are uncovered during construction, demolition, or earth moving activities, construction within 100 feet of the discovery will be stopped, and the INDOT Cultural Resources Office and the Division of Historic Preservation and Archaeology will be notified immediately.

INDOT Cultural Resources staff reviewer(s): Shaun Miller and Patrick Carpenter

****Be sure to attach this form to the National Environmental Policy Act documentation for this project. Also, the NEPA documentation shall reference and include the description of the specific stipulation in the PA that qualifies the project as exempt from further Section 106 review.*

DES 1800039

Appendix E

Red Flag Investigation

Laney Walstra

From: Foheybreting, Nicole K <NFoheyBreting@indot.IN.gov>
Sent: Thursday, July 9, 2020 5:17 PM
To: Laney Walstra
Cc: Mathas, Marlene
Subject: RE: Des 1800039 Red Flag Investigation

Hi Laney –

Thank you for the evaluation – very helpful! I agree, I do not believe an RFI Addendum is warranted for these specific updates. In addition to the evaluation provided below, neither ETR species nor bats were identified within the updated 0.5 mile search radius. Please include the updates in the CE and you can reference this email in the CE if needed.

Thank you!
Sincerely,
Nicole

Nicole Fohey-Breting

Site Assessment & Management (SAM) Specialist

100 North Senate Avenue RM N642

Indianapolis, Indiana 46204

Office: (317) 232-0626

Email: NFoheyBreting@indot.in.gov



The Site Assessment and Management (SAM) Manual can be found at <http://www.in.gov/indot/2523.htm>

Be sure to refer to the updated information in the SAM Manual for document preparation and submission.

From: Laney Walstra <laney@green3studio.com>
Sent: Thursday, July 09, 2020 4:33 PM
To: Foheybreting, Nicole K <NFoheyBreting@indot.IN.gov>
Cc: Mathas, Marlene <MMathas@indot.IN.gov>
Subject: RE: Des 1800039 Red Flag Investigation

**** This is an EXTERNAL email. Exercise caution. DO NOT open attachments or click links from unknown senders or unexpected email. ****

Nicole,

Thank you so much for the guidance!

When I pulled up the map, the only differences were:

- An extra pipeline with no impacts
- Three extra wetlands that cause no additional impacts

- An extra UST with no impacts
- An NPDES site that was not previously identified, but would not be an impact.

This would make me lean towards not an addendum being needed; however, I wanted to verify this. If we do not need an addendum, how should the CE writer portray this in the CE?

I appreciate your help!
Laney Walstra
Ecologist



From: Foheybreting, Nicole K <NFoheyBreting@indot.IN.gov>
Sent: Thursday, July 9, 2020 8:30 AM
To: Laney Walstra <laney@green3studio.com>
Cc: Mathas, Marlene <MMathas@indot.IN.gov>
Subject: RE: Des 1800039 Red Flag Investigation

Hi Laney –

Please have a look at the online SAM Manual to see if an RFI Addendum may be warranted. You’ll need to access the new 0.5 mile project area to see if there are new recommendations needed. Please let me know what you think and if you believe an RFI Addendum is warranted for the edits.

Thanks!
Nicole

Nicole Fohey-Breting
Site Assessment & Management (SAM) Specialist
 100 North Senate Avenue RM N642
 Indianapolis, Indiana 46204
Office: (317) 232-0626
Email: NFoheyBreting@indot.in.gov



The Site Assessment and Management (SAM) Manual can be found at <http://www.in.gov/indot/2523.htm>

Be sure to refer to the updated information in the SAM Manual for document preparation and submission.

From: Laney Walstra <laney@green3studio.com>
Sent: Wednesday, July 08, 2020 2:37 PM
To: Foheybreting, Nicole K <NFoheyBreting@indot.IN.gov>
Cc: Mathas, Marlene <MMathas@indot.IN.gov>
Subject: RE: Des 1800039 Red Flag Investigation

**** This is an EXTERNAL email. Exercise caution. DO NOT open attachments or click links from unknown senders or unexpected email. ****

Nicole,

I hope you had a wonderful holiday!

I was working on this project for the early coordination, and the shapefile from the engineer displays the project area farther than depicted on the RFI. I wanted to reach out and see how to INDOT SAM would want the RFI to be fixed. Attached is the map I made for our discussion. Blue is the project area from the engineer, and red is the RFI project area.

I appreciate your help,
Laney Walstra
Ecologist



From: Foheybreting, Nicole K <NFoheyBreting@indot.IN.gov>
Sent: Tuesday, March 31, 2020 6:01 PM
To: Laney Walstra <laney@green3studio.com>
Cc: Mathas, Marlene <MMathas@indot.IN.gov>
Subject: RE: Des 1800039 Red Flag Investigation

Greetings Laney –

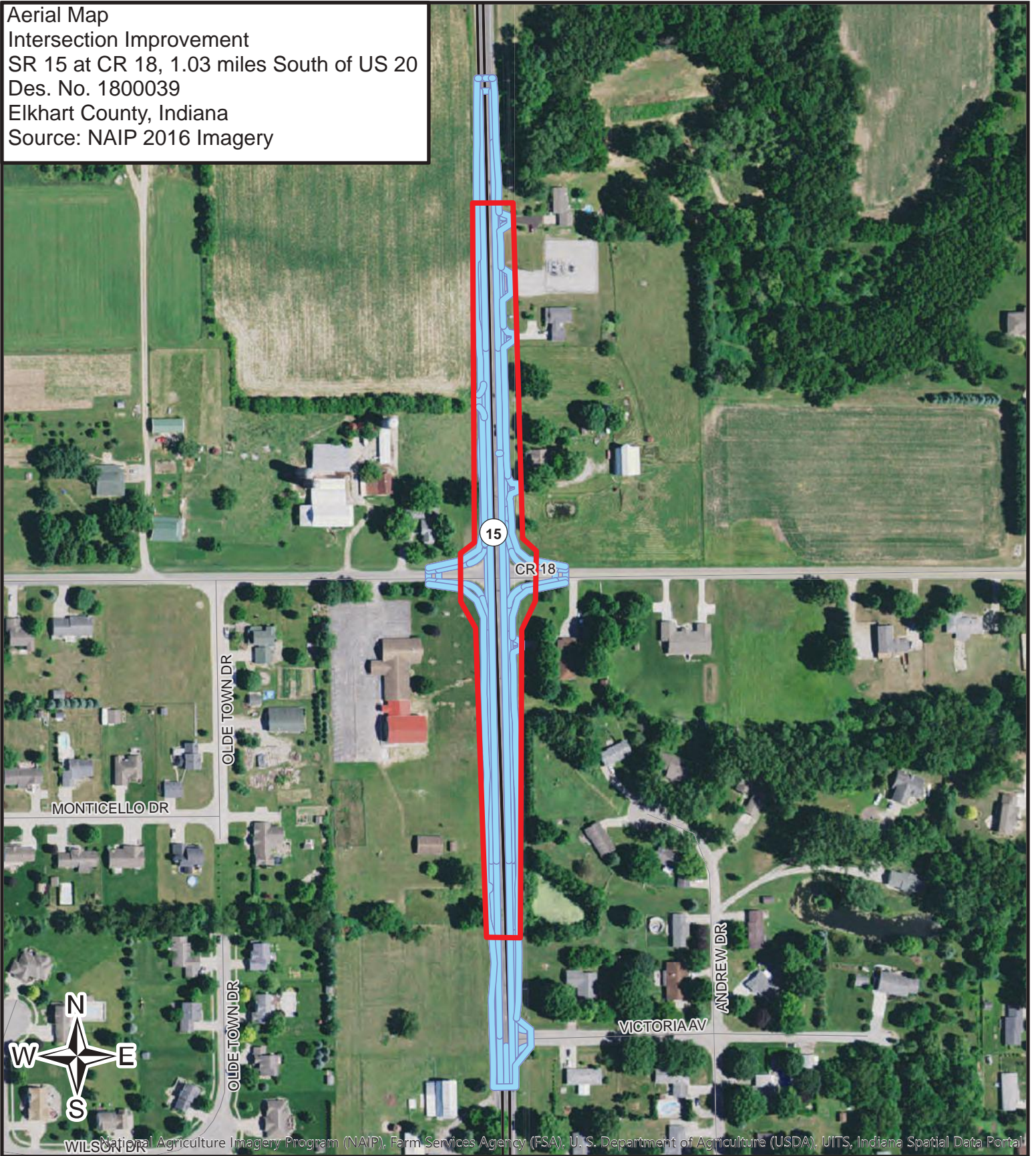
Thank you for updating the RFI. Much better and the project extents definitely match the narrative now 😊 Please find the PW link to the signed RFI below:

[RFI_Des 1800039 SR15 and CR 18 Intersection signed nfb 3-31-20.pdf](#)

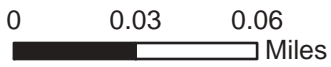
Thank you,
Nicole

Nicole Fohey-Breting
Site Assessment & Management (SAM) Specialist
100 North Senate Avenue RM N642
Indianapolis, Indiana 46204

Aerial Map
 Intersection Improvement
 SR 15 at CR 18, 1.03 miles South of US 20
 Des. No. 1800039
 Elkhart County, Indiana
 Source: NAIP 2016 Imagery



National Agriculture Imagery Program (NAIP), Farm Services Agency (FSA), U. S. Department of Agriculture (USDA), UITS, Indiana Spatial Data Portal



- Project Location
- SR15_CR_18



7/8/2020

Appendix E-4



INDIANA DEPARTMENT OF TRANSPORTATION

100 North Senate Avenue
Room N642
Indianapolis, Indiana 46204

PHONE: (317) 232-5113
FAX: (317) 233-4929

Eric Holcomb, Governor
Joe McGuinness,
Commissioner

Date: March 31, 2020

Refer to the correspondence above for updated resources
in the 0.5 mile search radius of this RFI report.

To: Site Assessment & Management
Environmental Policy Office - Environmental Services Division
Indiana Department of Transportation
100 N Senate Avenue, Room N642
Indianapolis, IN 46204

From: Laney Walstra
Fort Wayne District
1104 Prospect St.
Indianapolis, Indiana
laney@green3studio.com

Re: RED FLAG INVESTIGATION
DES 1800039, State Project
Intersection Improvement
SR 15 at CR 18, 1.03 Miles South of US 20
Elkhart County, Indiana

PROJECT DESCRIPTION

Brief Description of Project: The Federal Highway Administration (FHWA) and Indiana Department of Transportation (INDOT) intend to proceed with an intersection project at SR 15 at CR 18 in Jay County, approximately 1.03 Miles South of US 20. SR 15 is classified as a principal arterial and consists of one 12-foot through lane in each direction with 4-foot shoulders on each side. CR 18 is classified as a minor collector to the west of SR 15 and a local road to the east of SR 15. The existing intersection is a controlled stop on CR 18, and SR 15 with two travel lanes. The current preferred alternative is an addition of left turn lanes on both approaches of SR 15, and the potential of a signal installation at the intersection. Utility work will be needed, and left-turn lanes will be 585 feet long, and approximately 12 feet in width.

Bridge and/or Culvert Project: Yes No Structure # ____

If this is a bridge project, is the bridge Historical? Yes No , Select Non-Select

Proposed right of way: Temporary # Acres ____ Permanent # Acres 0.25, Not Applicable

Type of excavation: Excavation is anticipated for subgrade treatment, with a maximum depth of 2.5 feet.

Maintenance of traffic: Maintenance of traffic is anticipated of widening to one side of SR 15 and shifting traffic while the other side is under construction.

Work in waterway: Yes No Below ordinary high water mark: Yes No

State Project: LPA:

Any other factors influencing recommendations: Plans have not been finalized at this time.

Note to Reader: the original RFI approved on 3/31/2020 found one pipeline, not two as shown in the box below. Additional research on 7/9/2020 and 7/9/2021 of the extended project area found one additional pipeline, for a total of two in the current project area.

INFRASTRUCTURE TABLE AND SUMMARY

Infrastructure			
Religious Facilities	1*	Recreational Facilities	1
Airports ¹	N/A	Pipelines	2
Cemeteries	N/A	Railroads	N/A
Hospitals	N/A	Trails	1
Schools	1	Managed Lands	N/A

Religious Facilities: One* (1) unmapped religious facility is located within the 0.5 mile search radius. Prince of Peace Lutheran Church (18548 Co Rd 18) is located on the southwest corner of the intersection of CR 18 and SR 15. Coordination with Prince of Peace Lutheran Church will occur.

Schools: One (1) school is located within the 0.5 mile search radius. Jefferson Elementary School is improperly mapped on GIS and is located 0.31 mile southwest of the project area. Coordination with Jefferson Elementary School will occur.

Recreational Facilities: One (1) recreational facility is located within the 0.5 mile search radius. Jefferson Elementary School is mapped 0.31 mile southwest of the project area. Coordination with Jefferson Elementary School will occur.

Pipelines: One (1) pipelines is located within the 0.5 mile search radius. One (1) natural gas pipeline, Northern Indiana Public Service Company, runs adjacent to the project area. Coordination with INDOT Utilities and Railroads should occur.

Trails: One (1) trail segment is located within the 0.5 mile search radius. One (1) trail, Miami Snowmobile Trail, is located 0.49 northeast to the project area. No impact is expected.

WATER RESOURCES TABLE AND SUMMARY

Water Resources			
NWI - Points	N/A	Canal Routes - Historic	N/A
Karst Springs	N/A	NWI - Wetlands	20
Canal Structures – Historic	N/A	Lakes	6
NPS NRI Listed	N/A	Floodplain - DFIRM	N/A
NWI-Lines	2	Cave Entrance Density	N/A
IDEM 303d Listed Streams and Lakes (Impaired)	N/A	Sinkhole Areas	N/A
Rivers and Streams	N/A	Sinking-Stream Basins	N/A

NWI-Lines: Two (2) NWI-lines are located within the 0.5 mile search radius. The nearest NWI-line located 0.04 mile east of the project area. No impact is expected.

NWI-Wetlands: Twenty (20) NWI-wetlands are located within the 0.5 mile search radius. The nearest NWI-wetland is located within the project area. A Waters of the US Report will be prepared and coordination with INDOT Ecology and Waterway Permitting will occur.

Lakes: Six (6) lakes are located within the 0.5 mile search radius. The nearest lake is located 0.02 mile south of the project area. No impact is expected.

URBANIZED AREA BOUNDARY SUMMARY

Urbanized Area Boundary (UAB): This project lies within the Elkhart County UAB. Post construction Storm Water Quality Best Management Practices (BMPs) may need to be considered. An early coordination letter with topographic and aerial maps showing the project area should be sent to Elkhart County MS4 Coordinator at 4230 Elkhart Rd, Goshen, IN.

MINING AND MINERAL EXPLORATION TABLE AND SUMMARY

Mining/Mineral Exploration			
Petroleum Wells	N/A	Mineral Resources	N/A
Mines – Surface	N/A	Mines – Underground	N/A

Explanation: No mining and mineral resources were identified within the 0.5 mile search radius.

HAZARDOUS MATERIAL CONCERNS TABLE AND SUMMARY

Hazardous Material Concerns			
Superfund	N/A	Manufactured Gas Plant Sites	N/A
RCRA Generator/ TSD	N/A	Open Dump Waste Sites	N/A
RCRA Corrective Action Sites	N/A	Restricted Waste Sites	N/A
State Cleanup Sites	N/A	Waste Transfer Stations	N/A
Septage Waste Sites	N/A	Tire Waste Sites	N/A
Underground Storage Tank (UST) Sites	3	Confined Feeding Operations (CFO)	N/A
Voluntary Remediation Program	N/A	Brownfields	N/A
Construction Demolition Waste	N/A	Institutional Controls	N/A
Solid Waste Landfill	N/A	NPDES Facilities	N/A
Infectious/Medical Waste Sites	N/A	NPDES Pipe Locations	N/A
Leaking Underground Storage (LUST) Sites	2	Notice of Contamination Sites	N/A

Underground Storage Tank (UST): Three (3) Underground Storage Tanks (UST) are within the 0.5 mile search radius. Jefferson Elementary School (18565 Co Rd 20, and AI: 33967) is located approximately 0.38 mile southeast of project location. No impact is expected.

Leaking Underground Storage (LUST) Site: Two (2) Leaking Underground Storage Tanks (LUSTs) are within the 0.5 mile search radius. Hilgendorf Property (18045 County Rd 18, AI: 34307) is located approximately 0.45 mile east of project site. Since excavation will not occur near this site, no impact is expected.

ECOLOGICAL INFORMATION SUMMARY

The Elkhart County listing of the Indiana Natural Heritage Data Center information on endangered, threatened, or rare (ETR) species and high quality natural communities is attached with ETR species highlighted. A preliminary review of the Indiana Natural Heritage Database by INDOT Environmental Services did not indicate the presence of ETR species within the 0.5 mile search radius. Coordination with USFWS and IDNR will occur.

A review of the USFWS database did not indicate the presence of endangered bat species in or within 0.5 mile of the project area. The range-wide programmatic consultation for the Indiana bat and Northern long-eared bat will be completed according to "Using the USFWS's IPaC System for Listed Bat Consultation for INDOT Projects."

RECOMMENDATIONS SECTION

INFRASTRUCTURE:

Religious Facilities: One* (1) religious facility is located on the southwest corner of CR 18 and SR 15. Coordination with Prince of Peace Lutheran Church should occur.

Schools: One (1) school is located 0.31 mile southwest of the project area. Coordination with Jefferson Elementary School will occur.

Recreational Facilities: One (1) recreational facility is mapped 0.31 mile southwest of the project area. Coordination with Jefferson Elementary School will occur.

Pipelines: One (1) natural gas pipeline, Northern Indiana Public Service Company, is adjacent to the project area. Coordination with INDOT Utilities and Railroads should occur.

WATER RESOURCES:

The presence of the following water resources will require the preparation of a Waters of the US Report and coordination with INDOT ES Ecology and Waterway Permitting:

- One (1) wetland is located within the project area.

URBANIZED AREA BOUNDARY: This project lies within the Elkhart County UAB. Post construction Storm Water Quality Best Management Practices (BMPs) may need to be considered. An early coordination letter with topographic and aerial maps showing the project area should be sent to Elkhart County MS4 Coordinator at 4230 Elkhart Rd, Goshen, IN.

MINING/MINERAL EXPLORATION: N/A

HAZARDOUS MATERIAL CONCERNS: N/A

ECOLOGICAL INFORMATION: Coordination with USFWS and IDNR will occur. The range-wide programmatic consultation for the Indiana bat and Northern Long-eared bat will be completed according to "Using the USFWS's IPaC System for Listed Bat Consultation for INDOT Projects."

Nicole
Breting

Digitally signed by
Nicole Fohey-Breting
Date: 2020.03.31
17:56:32 -04'00'

INDOT Environmental Services concurrence:

(Signature)

www.in.gov/dot/

An Equal Opportunity Employer

Prepared by:
Laney Walstra
Ecologist
Green 3, LLC

Graphics:

SITE LOCATION: YES

INFRASTRUCTURE: YES

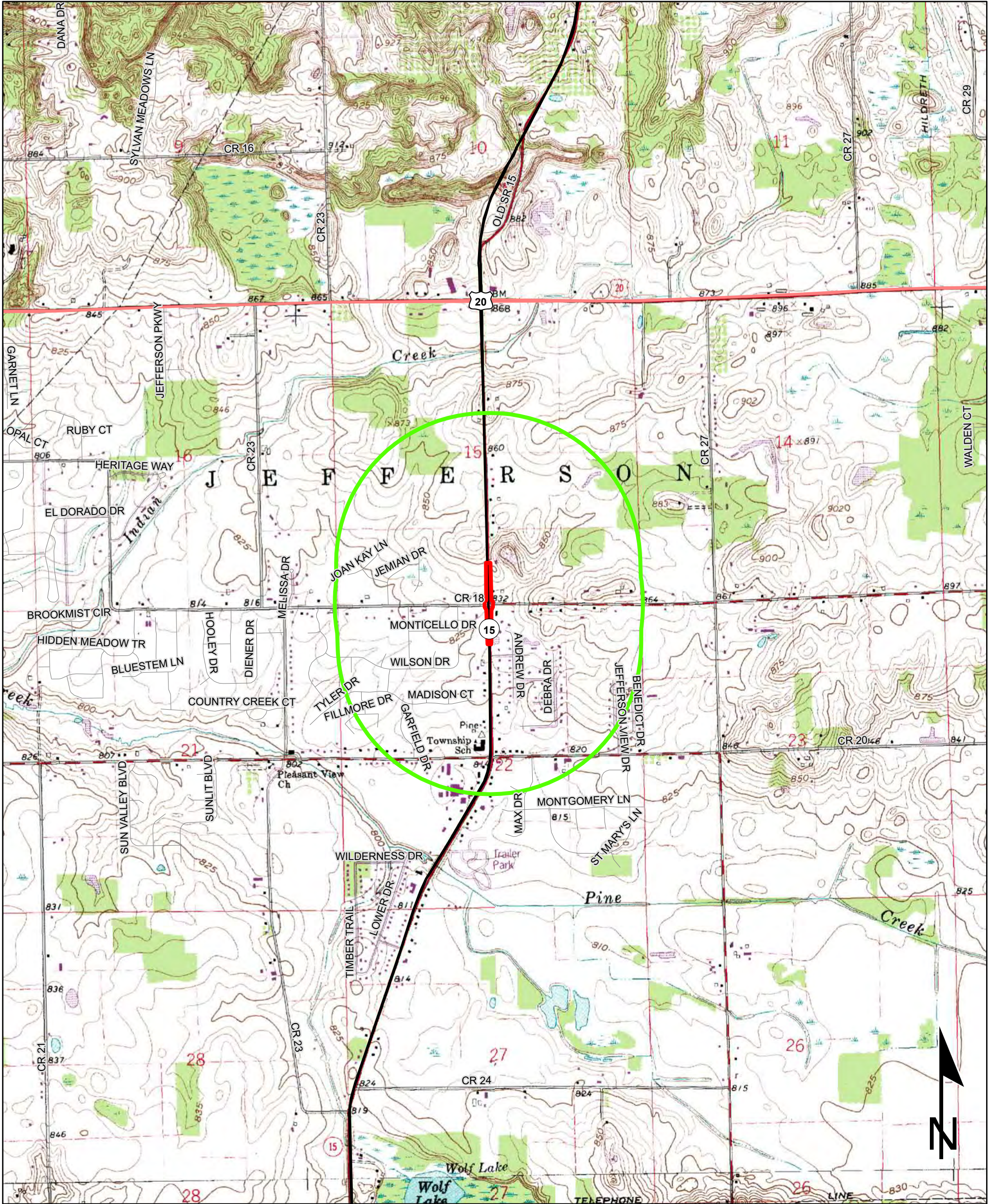
WATER RESOURCES: YES

URBANIZED AREA BOUNDARY: YES

MINING/MINERAL EXPLORATION: N/A

HAZARDOUS MATERIAL CONCERNS: YES

Red Flag Investigation - Site Location
 SR 15 at CR 18, 1.03 miles South of US 20
 Des. No. 1800039, Intersection Improvement
 Elkhart County, Indiana



Sources: 0.35 0.17 0 0.35 Miles
Non Orthophotography
Data - Obtained from the State of Indiana Geographical Information Office Library
Orthophotography - Obtained from Indiana Map Framework Data (www.indianamap.org)
Map Projection: UTM Zone 16 N **Map Datum:** NAD83
 This map is intended to serve as an aid in graphic representation only. This information is not warranted for accuracy or other purposes.

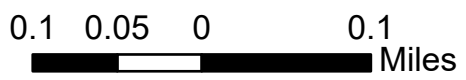
**BRISTOL QUADRANGLE
 INDIANA
 7.5 MINUTE SERIES
 (TOPOGRAPHIC)**

Red Flag Investigation - Infrastructure
 SR 15 at CR 18, 1.03 miles South of US 20
 Des. No. 1800039, Intersection Improvement
 Elkhart County, Indiana



Sources:
Non Orthophotography
 Data - Obtained from the State of Indiana Geographical Information Office Library
Orthophotography - Obtained from Indiana Map Framework Data (www.indianamap.org)
Map Projection: UTM Zone 16 N **Map Datum:** NAD83

This map is intended to serve as an aid in graphic representation only. This information is not warranted for accuracy or other purposes.



	Religious Facility		Recreation Facility		Project Area
	Airport		Pipeline		Half Mile Radius
	Cemeteries		Railroad		Toll
	Hospital		Trails		Interstate
	School		Managed Lands		State Route
			County Boundary		US Route
					Local Road

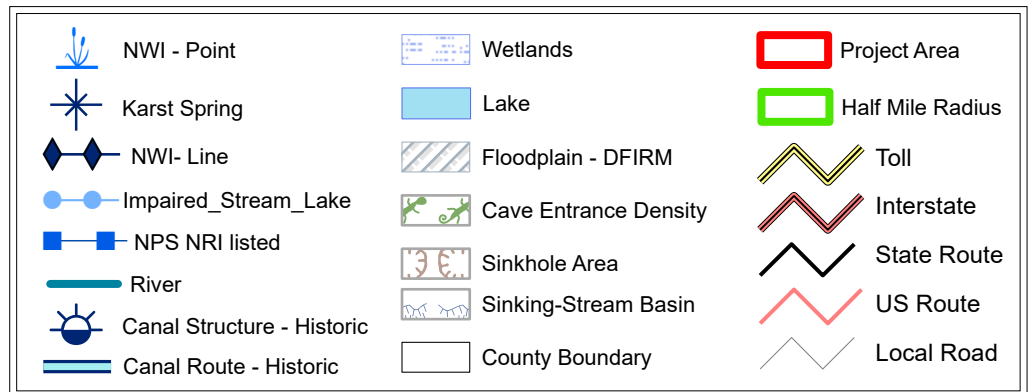
Red Flag Investigation - Water Resources
 SR 15 at CR 18, 1.03 miles South of US 20
 Des. No. 1800039, Intersection Improvement
 Elkhart County, Indiana



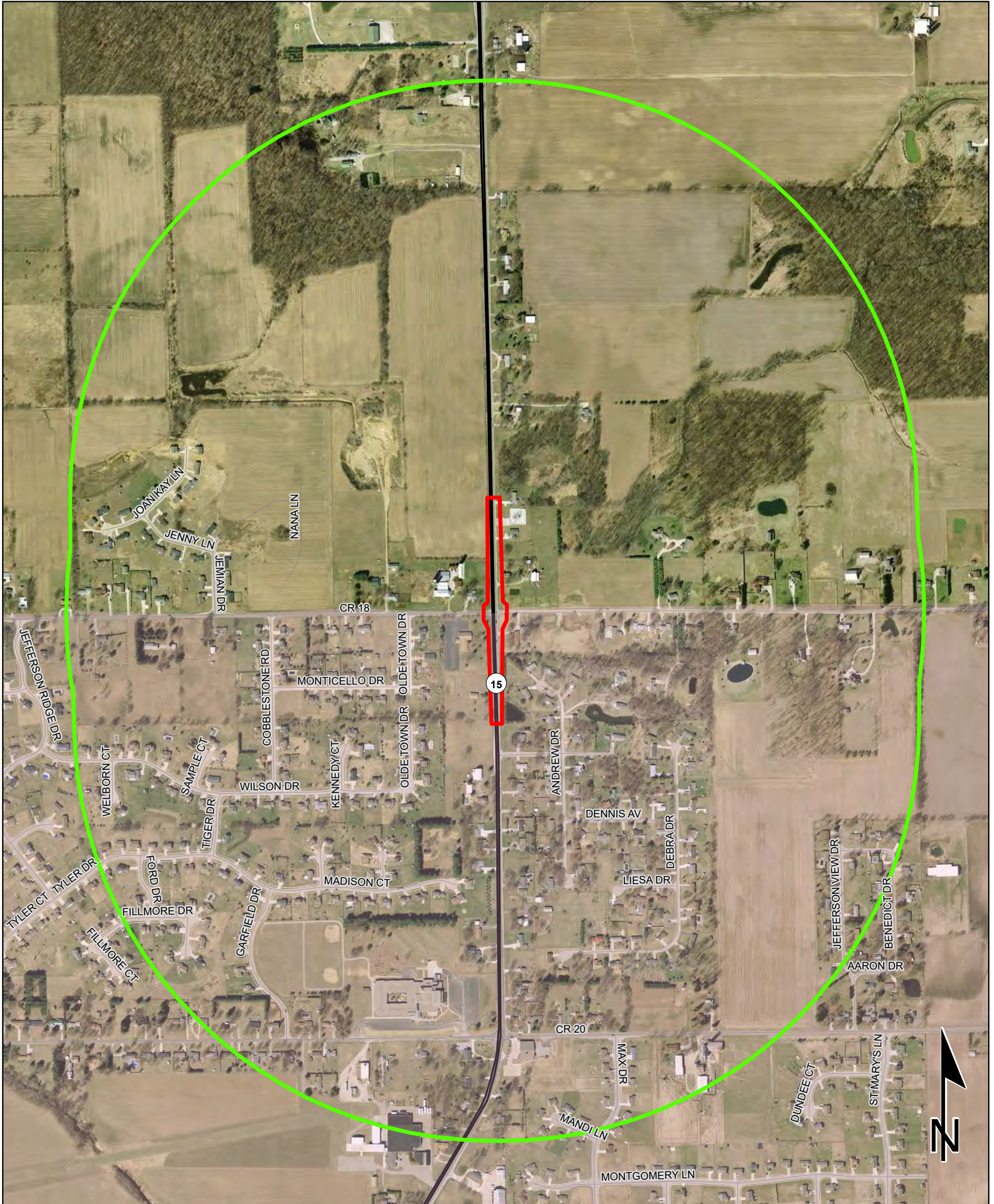
Sources:
Non Orthophotography
Data - Obtained from the State of Indiana Geographical Information Office Library
Orthophotography - Obtained from Indiana Map Framework Data (www.indianamap.org)
Map Projection: UTM Zone 16 N **Map Datum:** NAD83

0.1 0.05 0 0.1 Miles

This map is intended to serve as an aid in graphic representation only. This information is not warranted for accuracy or other purposes.



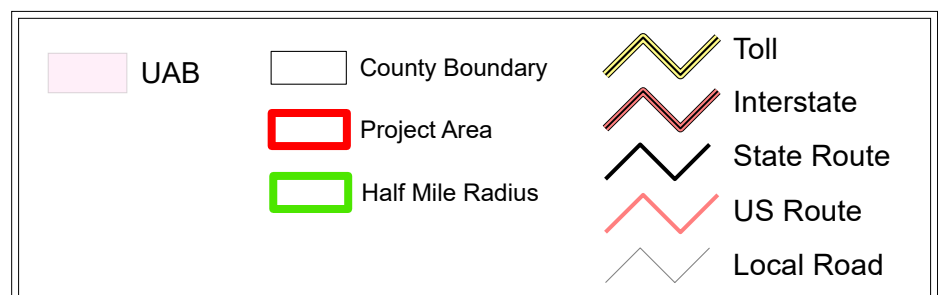
Red Flag Investigation - Urbanized Area Boundary
 SR 15 at CR 18, 1.03 miles South of US 20
 Des. No. 1800039, Intersection Improvement
 Elkhart County, Indiana



Sources: 0.15 0.07 0 0.15 Miles

Non Orthophotography Data - Obtained from the State of Indiana Geographical Information Office Library
Orthophotography - Obtained from Indiana Map Framework Data (www.indianamap.org)
Map Projection: UTM Zone 16 N **Map Datum:** NAD83

This map is intended to serve as an aid in graphic representation only. This information is not warranted for accuracy or other purposes.

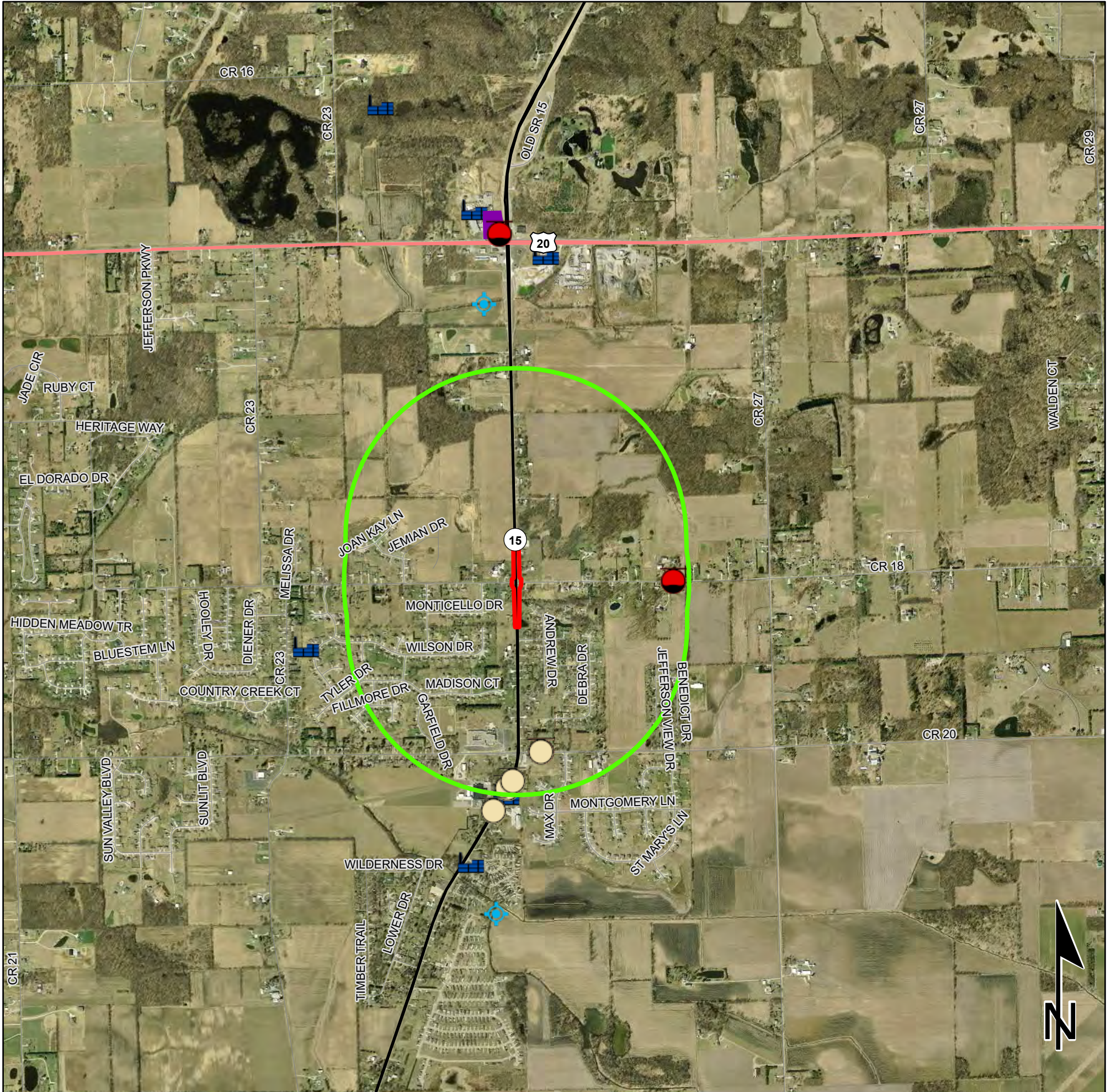


Red Flag Investigation - Hazardous Material Concerns

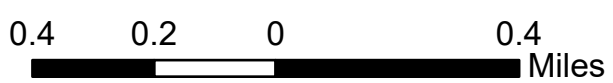
SR 15 at CR 18, 1.03 miles South of US 20

Des. No. 1800039, Intersection Improvement

Elkhart County, Indiana



	Brownfield		RCRA Generator/TSD		Institutional Controls
	RCRA Corrective Action Sites		Restricted Waste Site		County Boundary
	Confined Feeding Operation		Septage Waste Site		Project Area
	Notice_of_Contamination		Solid Waste Landfill		Half Mile Radius
	Construction/Demolition Site		State Cleanup Site		Toll
	Infectious/Medical Waste Site		Superfund		Interstate
	Leaking Underground Storage Tank		Tire Waste Site		State Route
	Manufactured Gas Plant		Underground Storage Tank		US Route
	NPDES Facilities		Voluntary Remediation Program		Local Road
	NPDES Pipe Locations		Waste Transfer Station		
	Open Dump Waste Site				



This map is intended to serve as an aid in graphic representation only. This information is not warranted for accuracy or other purposes.

Sources:
Non Orthophotography
Data - Obtained from the State of Indiana Geographical Information Office Library
Orthophotography - Obtained from Indiana Map Framework Data (www.indianamap.org)
Map Projection: UTM Zone 16 N **Map Datum:** NAD83

Indiana County Endangered, Threatened and Rare Species List

County: Elkhart



Species Name	Common Name	FED	STATE	GRANK	SRANK
Mollusk: Bivalvia (Mussels)					
Venustaconcha ellipsiformis	Ellipse		SSC	G4	S2
Mollusk: Gastropoda					
Campeloma decisum	Pointed Campeloma		SSC	G5	S2
Insect: Coleoptera (Beetles)					
Nicrophorus americanus	American Burying Beetle	LE	SX	G2G3	SX
Insect: Hymenoptera					
Formica ulkei				G5	S1
Insect: Lepidoptera (Butterflies & Moths)					
Apamea lignicolora	The Wood-colored Apamea		ST	G5	S1S2
Apamea nigrior	Black-dashed Apamea		SR	G5	S2S3
Capis curvata	Curved Halter Moth		ST	G5	S2S3
Catocala praeclara	Praeclara Underwing		SR	G5	S2S3
Crambus girardellus	Orange-striped Sedge Moth		SR	GNR	S2S3
Dasychira cinnamomea	Cinnamon Tussock Moth		SR	G4	S1
Exyra fax	Pitcher Window Moth		SE	G4	S1S2
Iodopepla u-album	White-eyed Borer Moth		SR	G5	S2
Leucania multilinea	Many-lined Wainscot		SR	G5	S1S2
Macrochilo absorptalis	Slant-lined Owlet		SR	G4G5	S2S3
Macrochilo hypocritalis	Twin-dotted Macrochilo		SR	G4	S2
Melanomma auricinctaria	Huckleberry Eye-spot Moth		SR	G4	S2S3
Papaipema appassionata	The Pitcher Plant Borer Moth		SE	G4	S1
Papaipema speciosissima	The Royal Fern Borer Moth		ST	G4	S2S3
Insect: Odonata (Dragonflies & Damselflies)					
Sympetrum semicinctum	Band-winged Meadowhawk		SR	G5	S2S3
Insect: Tricoptera (Caddisflies)					
Setodes oligus	A Caddisfly		SE	G5	S1
Fish					
Coregonus artedi	Cisco		SSC	G5	S2
Ichthyomyzon fossor	Northern Brook Lamprey		SE	G4	S1
Moxostoma valenciennesi	Greater Redhorse		SE	G4	S2
Rhinichthys cataractae	Longnose Dace		SSC	G5	S2
Amphibian					
Necturus maculosus	Common mudpuppy		SSC	G5	S2
Reptile					
Clemmys guttata	Spotted Turtle	C	SE	G5	S2
Clonophis kirtlandii	Kirtland's Snake		SE	G2	S2
Emydoidea blandingii	Blanding's Turtle	C	SE	G4	S2
Sistrurus catenatus	Eastern Massasauga	LT	SE	G3	S2

Indiana Natural Heritage Data Center
Division of Nature Preserves
Indiana Department of Natural Resources
This data is not the result of comprehensive county surveys.

Fed: LE = Endangered; LT = Threatened; C = candidate; PDL = proposed for delisting
State: SE = state endangered; ST = state threatened; SR = state rare; SSC = state species of special concern; SX = state extirpated; SG = state significant; WL = watch list
GRANK: Global Heritage Rank: G1 = critically imperiled globally; G2 = imperiled globally; G3 = rare or uncommon globally; G4 = widespread and abundant globally but with long-term concerns; G5 = widespread and abundant globally; G? = unranked; GX = extinct; Q = uncertain rank; T = taxonomic subunit rank
SRANK: State Heritage Rank: S1 = critically imperiled in state; S2 = imperiled in state; S3 = rare or uncommon in state; G4 = widespread and abundant in state but with long-term concern; SG = state significant; SH = historical in state; SX = state extirpated; B = breeding status; S? = unranked; SNR = unranked; SNA = nonbreeding status unranked

Indiana County Endangered, Threatened and Rare Species List

County: Elkhart



Species Name	Common Name	FED	STATE	GRANK	SRANK
<i>Terrapene carolina carolina</i>	Eastern Box Turtle		SSC	G5T5	S3
Bird					
<i>Bartramia longicauda</i>	Upland Sandpiper		SE	G5	S3B
<i>Botaurus lentiginosus</i>	American Bittern		SE	G5	S2B
<i>Certhia americana</i>	Brown Creeper			G5	S2B
<i>Circus hudsonius</i>	Northern Harrier		SE	G5	S2
<i>Cistothorus palustris</i>	Marsh Wren		SE	G5	S3B
<i>Cistothorus platensis</i>	Sedge Wren		SE	G5	S3B
<i>Empidonax alnorum</i>	Alder Flycatcher			G5	S2B
<i>Grus canadensis</i>	Sandhill Crane		SSC	G5	S2B,S1N
<i>Haliaeetus leucocephalus</i>	Bald Eagle		SSC	G5	S2
<i>Ixobrychus exilis</i>	Least Bittern		SE	G5	S3B
<i>Lanius ludovicianus</i>	Loggerhead Shrike		SE	G4	S3B
<i>Pandion haliaetus</i>	Osprey		SSC	G5	S1B
<i>Rallus elegans</i>	King Rail		SE	G4	S1B
<i>Rallus limicola</i>	Virginia Rail		SE	G5	S3B
Mammal					
<i>Condylura cristata</i>	Star-nosed Mole		SSC	G5	S2?
<i>Mustela nivalis</i>	Least Weasel		SSC	G5	S2?
<i>Taxidea taxus</i>	American Badger		SSC	G5	S2
Vascular Plant					
<i>Actaea rubra</i>	Red Baneberry		ST	G5	S2
<i>Amelanchier humilis</i>	Running Serviceberry		SE	G5	S1
<i>Andromeda glaucophylla</i>	Bog Rosemary		ST	G5T5	S2
<i>Besseyia bullii</i>	Kitten Tails		SE	G3	S1
<i>Boechera stricta</i>	Drummond Rockcress		SE	G5	S1
<i>Borodinia missouriensis</i>	Missouri Rockcress		SE	G5	S1
<i>Carex bebbii</i>	Bebb's Sedge		SR	G5	S3
<i>Carex debilis</i> var. <i>rudgei</i>	White-edge Sedge		WL	G5T5	S3
<i>Carex straminea</i>	Straw Sedge		ST	G5	S2
<i>Chimaphila umbellata</i> ssp. <i>cisatlantica</i>	Pipsissewa		SE	G5T5	S1
<i>Dendrolycopodium hickeyi</i>	Hickey's Clubmoss		SR	G5	S3
<i>Dendrolycopodium obscurum</i>	Tree Clubmoss		SR	G5	S3
<i>Eleocharis equisetoides</i>	Horse-tail Spikerush		SE	G4	S1
<i>Eleocharis robbinsii</i>	Robbins Spikerush		ST	G4G5	S2
<i>Epigaea repens</i>	Trailing Arbutus		SR	G5	S3
<i>Eriocaulon aquaticum</i>	Pipewort		SE	G5	S1
<i>Eriophorum gracile</i>	Slender Cotton-grass		ST	G5	S2
<i>Eriophorum viridicarinatum</i>	Green-keeled Cotton-grass		SR	G5	S2
<i>Fuirena pumila</i>	Dwarf Umbrella-sedge		ST	G4	S2

Indiana Natural Heritage Data Center
Division of Nature Preserves
Indiana Department of Natural Resources
This data is not the result of comprehensive county surveys.

Fed: LE = Endangered; LT = Threatened; C = candidate; PDL = proposed for delisting
State: SE = state endangered; ST = state threatened; SR = state rare; SSC = state species of special concern; SX = state extirpated; SG = state significant; WL = watch list
GRANK: Global Heritage Rank: G1 = critically imperiled globally; G2 = imperiled globally; G3 = rare or uncommon globally; G4 = widespread and abundant globally but with long-term concerns; G5 = widespread and abundant globally; G? = unranked; GX = extinct; Q = uncertain rank; T = taxonomic subunit rank
SRANK: State Heritage Rank: S1 = critically imperiled in state; S2 = imperiled in state; S3 = rare or uncommon in state; G4 = widespread and abundant in state but with long-term concern; SG = state significant; SH = historical in state; SX = state extirpated; B = breeding status; S? = unranked; SNR = unranked; SNA = nonbreeding status unranked

Indiana County Endangered, Threatened and Rare Species List

County: Elkhart



Species Name	Common Name	FED	STATE	GRANK	SRANK
Geranium robertianum	Herb-robert		SR	G5	S3
Juniperus communis var. depressa	Ground Juniper		SR	G5T5	S3
Linum striatum	Ridged Yellow Flax		WL	G5	S3
Malaxis unifolia	Green Adder's-mouth Orchid		SE	G5	S1
Matteuccia struthiopteris	Ostrich Fern		SR	G5	S3
Milium effusum	Tall Millet-grass		ST	G5	S1
Minuartia michauxii var. michauxii	Michaux's Stitchwort		ST	G5T5	S2
Pinus strobus	Eastern White Pine		SR	G5	S3
Piptochaetium avenaceum	Blackseed Needlegrass		SR	G5	S3
Platanthera leucophaea	Prairie White-fringed Orchid	LT	SE	G2G3	S1
Platanthera psycodes	Small Purple-fringe Orchis		SR	G5	S2
Poa paludigena	Bog Bluegrass		SR	G3	S3
Potamogeton pulcher	Spotted Pondweed		ST	G5	S2
Pseudognaphalium macounii	Winged Cudweed		SX	G5	SX
Pyrola americana	American Wintergreen		ST	G5	S2
Quercus prinoides	Dwarf Chinquapin Oak		SE	G5	S1
Rhynchospora macrostachya	Tall Beaked-rush		SR	G4	S3
Rhynchospora scirpoides	Long-beaked Baldrush		SR	G4	S3
Schoenoplectiella purshiana	Weakstalk Bulrush		SR	G4G5	S3
Schoenoplectiella smithii	Smith's Bulrush		ST	G5?	S2
Selaginella rupestris	Ledge Spike-moss		SE	G5	S1
Spiranthes lucida	Shining Ladies'-tresses		SR	G4	S3
Symphyotrichum boreale	Rushlike Aster		ST	G5	S2
Triantha glutinosa	False Asphodel		ST	G5	S2
Utricularia cornuta	Horned Bladderwort		SE	G5	S1
Utricularia minor	Lesser Bladderwort		ST	G5	S1
Utricularia purpurea	Purple Bladderwort		SR	G5	S3
Vaccinium oxycoccos	Small Cranberry		ST	G5	S2
Valerianella chenopodiifolia	Goose-foot Corn-salad		WL	G4	S3
Xyris difformis	Carolina Yellow-eyed Grass		ST	G5	S2
High Quality Natural Community					
Forest - floodplain mesic	Mesic Floodplain Forest		SG	G3?	S1
Forest - floodplain wet-mesic	Wet-mesic Floodplain Forest		SG	G3?	S3
Forest - upland mesic Northern Lakes	Northern Lakes Mesic Upland Forest		SG	GNR	S1
Lake - lake	Lake		SG	GNR	S2
Prairie - sand dry-mesic	Dry-mesic Sand Prairie		SG	G3	S3
Wetland - beach marl	Marl Beach		SG	G3	S2
Wetland - bog acid	Acid Bog		SG	G3	S2
Wetland - bog circumneutral	Circumneutral Bog		SG	G3	S3

Indiana Natural Heritage Data Center
Division of Nature Preserves
Indiana Department of Natural Resources
This data is not the result of comprehensive county surveys.

Fed: LE = Endangered; LT = Threatened; C = candidate; PDL = proposed for delisting
State: SE = state endangered; ST = state threatened; SR = state rare; SSC = state species of special concern; SX = state extirpated; SG = state significant; WL = watch list
GRANK: Global Heritage Rank: G1 = critically imperiled globally; G2 = imperiled globally; G3 = rare or uncommon globally; G4 = widespread and abundant globally but with long-term concerns; G5 = widespread and abundant globally; G? = unranked; GX = extinct; Q = uncertain rank; T = taxonomic subunit rank
SRANK: State Heritage Rank: S1 = critically imperiled in state; S2 = imperiled in state; S3 = rare or uncommon in state; G4 = widespread and abundant in state but with long-term concern; SG = state significant; SH = historical in state; SX = state extirpated; B = breeding status; S? = unranked; SNR = unranked; SNA = nonbreeding status unranked

Indiana County Endangered, Threatened and Rare Species List

County: Elkhart



Species Name	Common Name	FED	STATE	GRANK	SRANK
Wetland - fen	Fen		SG	G3	S3
Wetland - flat muck	Muck Flat		SG	G2	S2
Wetland - flat sand	Sand Flat		SG	G2	S1
Wetland - marsh	Marsh		SG	GU	S4
Wetland - swamp shrub	Shrub Swamp		SG	GU	S2

Indiana Natural Heritage Data Center
Division of Nature Preserves
Indiana Department of Natural Resources
This data is not the result of comprehensive county surveys.

Fed: LE = Endangered; LT = Threatened; C = candidate; PDL = proposed for delisting
 State: SE = state endangered; ST = state threatened; SR = state rare; SSC = state species of special concern; SX = state extirpated; SG = state significant; WL = watch list
 GRANK: Global Heritage Rank: G1 = critically imperiled globally; G2 = imperiled globally; G3 = rare or uncommon globally; G4 = widespread and abundant globally but with long-term concerns; G5 = widespread and abundant globally; G? = unranked; GX = extinct; Q = uncertain rank; T = taxonomic subunit rank
 SRANK: State Heritage Rank: S1 = critically imperiled in state; S2 = imperiled in state; S3 = rare or uncommon in state; G4 = widespread and abundant in state but with long-term concern; SG = state significant; SH = historical in state; SX = state extirpated; B = breeding status; S? = unranked; SNR = unranked; SNA = nonbreeding status unranked

DES 1800039

Appendix F

Water Resources



**Waters Report
State Road 15 at County Road 18
Elkhart County, Indiana
Intersection Improvement Project
Des. 1800039**

Note to reviewer: Maps and photos were removed to reduce the overall size of the document. Please refer to Appendix B for graphics.

Report Completed on: November 6, 2020

Prepared for:
Strand Associates, Inc.

Prepared By:

Kevin McLane
SJCA, Inc.
Historic Fountain Square
1104 Prospect Street
Indianapolis, IN 46203

p. 317.634.4110

f. 866.422.2046

e. kmclane@sjcainc.com

Site Location:

Section 15 & 22, Township 37 N, Range 6 E
Bristol 24K Quadrangle
Elkhart County, Indiana
Pine Creek Subwatershed, 12-Digit HUC: 040500012002
Latitude: 41.652659° Longitude: -85.821165°

Field Investigation Date: August 14, 2020

Project Description

The Indiana Department of Transportation (INDOT) and the Federal Highway Administration (FHWA) intend to proceed with the State Road (SR) 15 at County Road (CR) 18 Intersection Improvement Project in Elkhart County, Indiana (Des. 1800039). The project is located at the intersection of SR 15 and CR 18, 1.03 miles south of US 20. The current intersection is stop controlled along CR 18, with SR 15 having no stop signs. The project will involve the addition of left turn lanes from SR 15 to CR 18 in each direction. The turn lanes constructed will be approximately 585 feet in total length in each direction of SR 15. Rumble strips are to be added along the shoulders and centerlines of SR 15. Maintenance of traffic will require the widening of the road to one side and shifting traffic while the other side is under construction.

Methodology

The delineation of wetlands and other “waters of the U.S.” on the site were based on the methodology described in the *Corps of Engineers Wetland Delineation Manual (Environmental Laboratory, 1987)* and the *Regional Supplement to the Corps of Engineers Wetland Delineation Manual: Midwest Region (Environmental Laboratory, 2012)* as required by current U.S. Army Corps of Engineers (USACE) policy.

Prior to the field work, background information, including US Geological Survey (USGS) topographic maps, aerial photographs, the U.S. USGS National Hydrography Dataset (NHD) layer on the Indiana Geological Society’s (IGS) IndianaMap website, U.S. Fish and Wildlife Service (USFWS) National Wetland Inventory (NWI) maps, and the Natural Resources Conservation Service (NRCS) Web Soil Survey for Elkhart County were reviewed to establish the probability and potential location of water resources on the site. Next, a general reconnaissance of the project area was conducted to determine site conditions. Sample points were established at locations within the project area to inspect for any possible wetland areas and to document soil characteristics, evidence of hydrology, and dominant vegetation. Soils were examined to a depth of at least 16-20 inches, when no restrictive layer was encountered, to assess soil characteristics and site hydrology.

Results/Discussion

Site Description and Conditions

- **Topography:** The topography around the project is flat with some raised hills to the east.
- **Existing Land-Use:** Adjacent land use is mixed residential, commercial, and agricultural.
- **Plant Communities:** Vegetation along most of the roadside right-of-way is typical of maintained lawns and is dominated by tall fescue, Kentucky bluegrass, white clover, common dandelion, common plantain, and hairy crabgrass. The pasture in the northeast quadrant of the intersection and along the north side of CR 18 is mostly dominated by the invasive reed canary grass. Vegetation along the east side of SR 15, south of CR 18, is dominated by upland plants such as common milkweed, Fuller’s teasel, Queen Anne’s lace, tall fescue, red fescue, and Carolina horsenettle. Further south, the east side of SR 15 becomes a ditch dominated by reed canary grass.
- **Soils:** According to the Elkhart County Soil Survey, soils mapped within the project area include:

Table 1. Soil Types Within the Project Area

Soil Abbreviation	Soil Unit Name	Hydric Rating
WobB	<i>Williamstown-Crosier complex, 1-5% slopes</i>	Not Hydric
BufA	<i>Bronson sandy loam, 0-1% slopes</i>	Contains 6% Hydric Inclusions
BtxA	<i>Bristol loamy sand, 0-2% slopes</i>	Not Hydric
ReyA	<i>Rensselaer loam, 0-1% slopes</i>	Contains 88% Hydric Inclusions
BtxB	<i>Birstol loamy sand, 2-5% slopes</i>	Not Hydric

- **Hydrology:** According to the Federal Emergency Management Agency (FEMA) Flood Rate Insurance Map (FIRM) dataset (see attached Floodplain Map), the project area is not within any mapped floodplains. Based on the National Hydrography Dataset (NHD) (see attached NHD map), two unclassified flowlines and one classified flowline are mapped within the project area. The unclassified flowlines were not associated with any features identified within the field investigation and are likely associated with underground farm drainage. The classified flowline is shown as a series of ditch/artificial path/connector segments along the east side of SR 15 and corresponds with the roadside ditch wetland, Wetland 2 (discussed in the Findings section below), and likely carries drainage to the excavated freshwater pond (PUBGx) east of and outside of the project area.
- **NWI Data:** According to the NWI map, one wetland is mapped adjacent to and partially within the project area. This wetland is mapped as an excavated freshwater pond (PUBGx) located east of SR 15 at the southern section of the project area.
- **Site Conditions:** Site conditions were typical for the late summer, with no precipitation within the past five days (according to wunderground.com). Temperatures were in the mid-eighties (° F).

Findings

Soil Sample Points (SP)

Table 2. Sample Point Summary Table

Data Point	Photos	Hydrophytic Vegetation	Hydric Soils	Wetland Hydrology	Wetland	Date
1	10-14	Yes	Yes	Yes	Yes	8/14/20
2	18-21	No	No	No	No	8/14/20
3	29-32	Yes	Yes	Yes	Yes	8/14/20
4	33-37	No	No	No	No	8/14/20

Site Analysis

The investigated area included roadside right-of-way, maintained lawns, and a fallow pasture along SR 15 and CR 18. Hydrology within the project area is influenced by agricultural field drainage and roadway runoff. The project area is located within the Pine Creek subwatershed. According to the NWI map and USGS Topographic Map, there is one wetland and no streams mapped within or adjacent to the project area. This wetland is mapped as an excavated freshwater pond (PUBGx) located east of SR 15 at the southern section of the project area. During the site visit, it was confirmed that this freshwater pond was located approximately 30 feet from the edge of the SR 15 and separated from the roadside ditch along SR 15 by a raised berm. No streams were identified during the site visit. Two unmapped wetlands were identified within the investigated area during the site visit.

Sample Point 1 (SP 1) was taken at the corner of the property on the northeast quadrant of the SR 15 and CR 18 intersection. The property is fenced and appears to have been used as a pasture in the past. The pasture has been allowed to go fallow and is in a depression/concave relief. SP 1 was dominated by reed canary grass (*Phalaris arundinacea*, FACW) and met the rapid test for hydrophytic vegetation. Soils at SP 1 had a layer of 10YR 3/2 (100%) from 0-3 inches, 10YR 3/2 (94%) with redox concentrations in the pore lining of 2.5YR 4/6 (6%) from 3-10 inches, 10YR 4/2 (90%) depleted matrix with 7.5YR 5/8 (10%) redox concentrations from 10-16 inches. Soil texture was sandy clay loam from 0-3 inches and sandy loam from 10-16 inches. SP 1 met the redox dark surface and redox depressions indicators for hydric soil. Based on the NWI map aerial imagery (from last 5 years) and the 2019 Google aerial imagery, the corner of this property is often saturated with water. SP 1 met three secondary indicators for wetland hydrology: saturation visible on aerial imagery, FAC-neutral test, and geomorphic position. This sample point met the criteria for hydrophytic vegetation, hydric soils, and wetland hydrology; therefore, it was within a wetland, **Wetland 1**. Wetland 1 is approximately 0.24 acres within the investigated area; however, it appears to expand east outside of the investigated area. The western boundary of the wetland ends at the fence and the southern boundary extends past the fence and into the low area along the north side of CR 18. Wetland 1 is a poor-quality emergent wetland because it lacks biodiversity and does not provide habitat for aquatic flora and fauna. Wetland 1 is likely not jurisdictional under the authority of the USACE because it lacks connectivity to any jurisdictional water features. It is likely that Wetland 1 is an isolated wetland and waters of the state. INDOT acknowledges that Wetland 1 would likely not meet the

definition of a Waters of the US; however, INDOT is requesting that the USACE take jurisdiction of the wetland.

Sample Point 2 (SP 2) was taken approximately 105 feet north of SP 1 within the property at the northeast quadrant of the SR 15 and CR 18 intersection. The vegetation within Wetland 1 abruptly changes to typical lawn grasses near SP 2 and was considered a representative upland point. SP 2 was dominated by tall fescue (*Schedonorus arundinaceus*, FACU) and Kentucky bluegrass (*Poa pratensis*, FAC); therefore, it did not meet any indicators for hydrophytic vegetation. The soil did not meet any indicators for hydric soil with a layer of 10YR 3/2 (100%) from 0-13 inches and 10YR 3/2 (25%) with a 10YR 5/2 (70%) matrix and 10YR 5/8 (5%) redox concentrations in the matrix from 13-18 inches. The soil texture was sandy clay loam from 0-18 inches and large cobble stones were found within the soil profile. No indicators for wetland hydrology were observed. The sample point lacked hydrophytic vegetation, hydric soils, and wetland hydrology. Therefore, SP 2 is not within a wetland.

Sample Point 3 (SP 3) was taken approximately 520 feet south of the intersection of SR 15 and CR 18, within the roadside ditch along the east side of SR 15. The ditch is between the raised roadway of SR 15 to the west and a raised terrace to the west. SP 3 was dominated by reed canary grass (*Phalaris arundinacea*, FACW) and met the rapid test for hydrophytic vegetation. Soils at SP 3 had a layer of 10YR 3/2 (100%) from 0-5 inches, 10YR 3/2 (92%) with redox concentrations in the matrix of 2.5YR 4/6 (8%) from 5-12 inches, 10YR 3/2 (20%) with a matrix of 10YR 5/2 (70%) and 10YR 5/8 (10%) redox concentrations in the matrix from 12-18 inches. Soil texture was sandy clay loam from 0-18 inches. SP 3 met the redox dark surface indicator for hydric soil. SP 3 met two secondary indicators for wetland hydrology: FAC-neutral test and geomorphic position. This sample point met the criteria for hydrophytic vegetation, hydric soils, and wetland hydrology; therefore, it was within a wetland, **Wetland 2**. Wetland 2 is approximately 0.06 acres within the investigated area and is confined to the roadside ditch between SR 15 and the raised earthen-berm and raised terrace. The majority of this ditch wetland is dominated by reed canary grass, but some sapling black willows (*Salix nigra*, OBL) are located further south within the wetland. The northern and southern boundaries of Wetland 2 are apparent by abrupt the changes in dominant vegetation to upland vegetation and raised geomorphic position. Wetland 2 is a poor-quality emergent/shrub wetland because it lacks biodiversity and does not provide habitat for aquatic flora and fauna. Wetland 2 is likely not jurisdictional under the authority of the USACE because it lacks connectivity to any jurisdictional water features. It is likely that Wetland 2 is an isolated wetland and waters of the state due to its location not adjacent to a Traditional Navigable Waterway (TNW). INDOT acknowledges that Wetland 2 would likely not meet the definition of a Waters of the US; however, INDOT is requesting that the USACE take jurisdiction of the wetland.

Sample Point 4 (SP 4) was taken east of SP 3/Wetland 2 within the raised terrace that continues east into the residential properties. SP 4 was dominated by reed canary grass (*Phalaris arundinacea*, FACW) in the herbaceous stratum and staghorn sumac (*Rhus typhina*, UPL) in the sapling/shrub and tree stratum. SP 4 did not meet any indicators for hydrophytic vegetation. The soil did not meet any indicators for hydric soil with a layer of 10YR 3/3 (100%) from 0-10 inches and 10YR 3/3 (60%) and 10YR 4/3 (40%) from 10-18 inches. The soil texture was sandy loam. No indicators for wetland hydrology were observed. The sample point lacked hydrophytic

vegetation, hydric soils, and wetland hydrology. Therefore, SP 4 is not within a wetland. The presence of reed canary grass within SP 4 appears to be due to its spread up the slope from the roadside ditch, which is common for such an aggressively weedy, invasive species.

The project area was reviewed for the presence of other water features such as open water, areas that do not have an OHWM but have concentrated flow, all roadside ditches, historic drainage, and unusual circumstances. Two open water features, freshwater ponds, were located outside of and adjacent to the investigated area. The first freshwater pond is located adjacent to Wetland 1 in the property at the northeast quadrant of the intersection (see Photo 16). The second freshwater pond is labeled on the NWI map and is located east of the raised berm along Wetland 2 (see Photo 41). No open water or other water features were identified in the investigated area.

Aquatic Resources

Table 3. Wetland Summary Table

Wetland Name	Photos	Lat/Long	Type	Total Area (acres)	Quality	Likely Water of U.S.?
Wetland 1	11-15, 17,19, 20, 23	N 41.652773° W -85.821001°	Emergent	0.24	Poor	No
Wetland 2	28-32, 36,38-40,42	N 41.651220° W -85.821039°	Emergent/ Shrub	0.06	Poor	No

Conclusions

The majority of the investigated area was considered typical of residential lawns, with upland vegetation, quick draining soils, and no hydrology indicators. Two wetlands were identified during the site investigation, Wetland 1 and Wetland 2. Wetland 1 is located at the northeast quadrant of the intersection of SR 15 and CR 18 in a low-lying pasture. Wetland 2 is located along the east side of SR 15, near the southern portion of the project area, and within a roadside ditch. It is likely that Wetland 1 and 2 are not jurisdictional since they lack connectivity to any relatively permanent waterways; therefore, they are likely waters of the state. INDOT acknowledges that the wetlands would likely not meet the definition of a Waters of the US; however, INDOT is requesting that the USACE take jurisdiction of the wetlands.

Every effort should be taken to avoid and minimize impacts to these wetlands. If impacts are necessary, then mitigation may be required. The USACE should be contacted immediately if impacts occur. The final determination of jurisdictional waters is ultimately made by the appropriate regulatory staff of the USACE. This report is our best judgment based on the guidelines set forth by the Corps.

Acknowledgement

This waters determination has been prepared based on the best available information, interpreted in the light of the investigator's training, experience and professional judgement in conformance

with the 1987 Corps of Engineers Wetlands Delineation Manual, the appropriate regional supplement, the USACE Jurisdictional Determination Form Instructional Guidebook, and other appropriate agency guidelines.

Kevin McLane



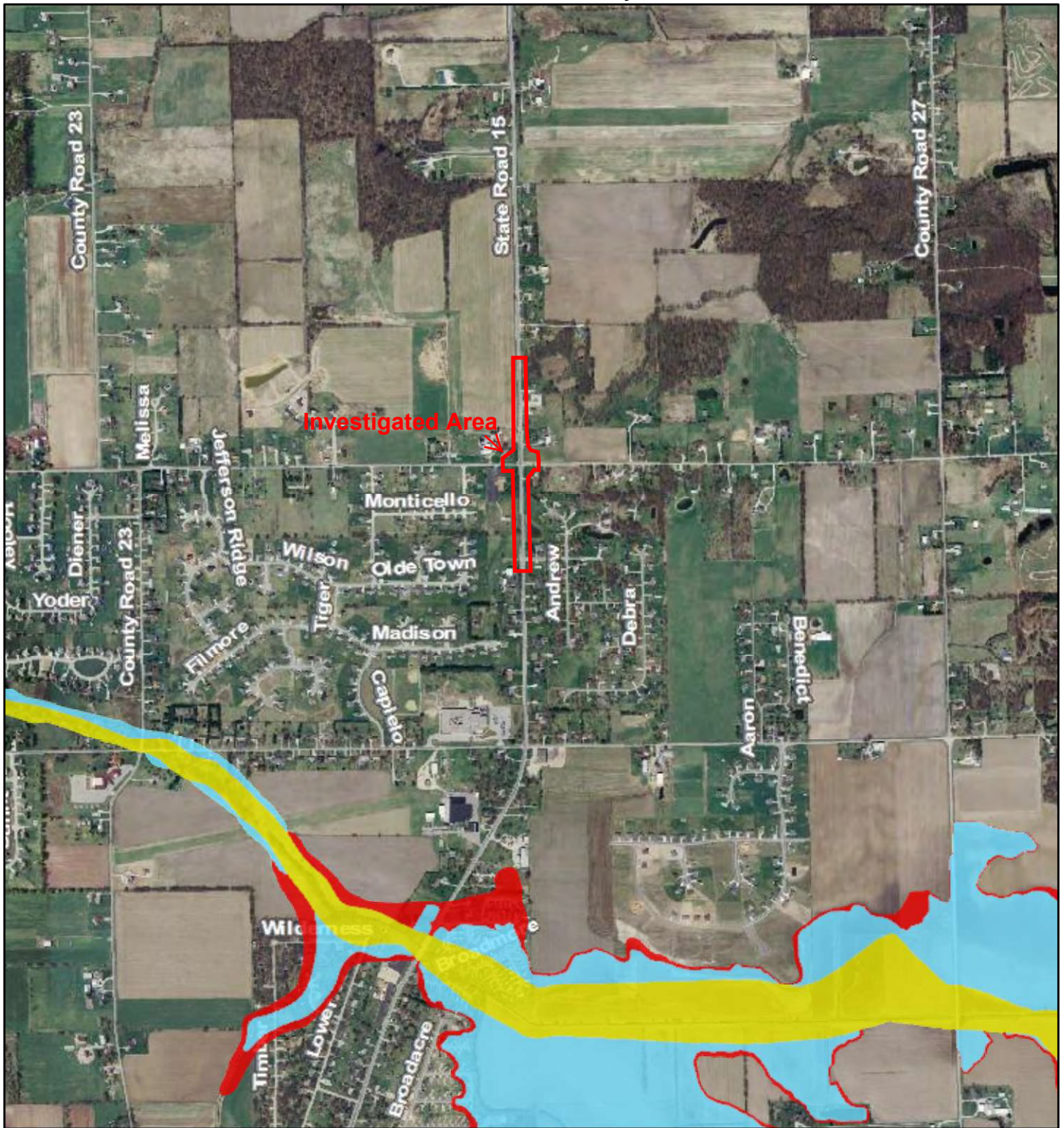
Ecologist
SJCA, Inc.

Date: November 6, 2020

Supporting Documentation

- Site Location Map
- USGS Topographic Map
- Floodplain Map
- LiDAR Map
- NHD Flowlines Map
- Watershed Map
- USFWS NWI Map
- NRCS Hydric Soil Map
- Water Resources and Site Photograph Map
- Site Photographs
- Sample Point Data Sheets
- Preliminary Jurisdictional Determination Form

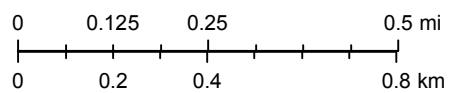
Floodplain Map
 SR 15 at CR 18, Des. 1800039
 Elkhart County, IN



September 29, 2020

1:16,000

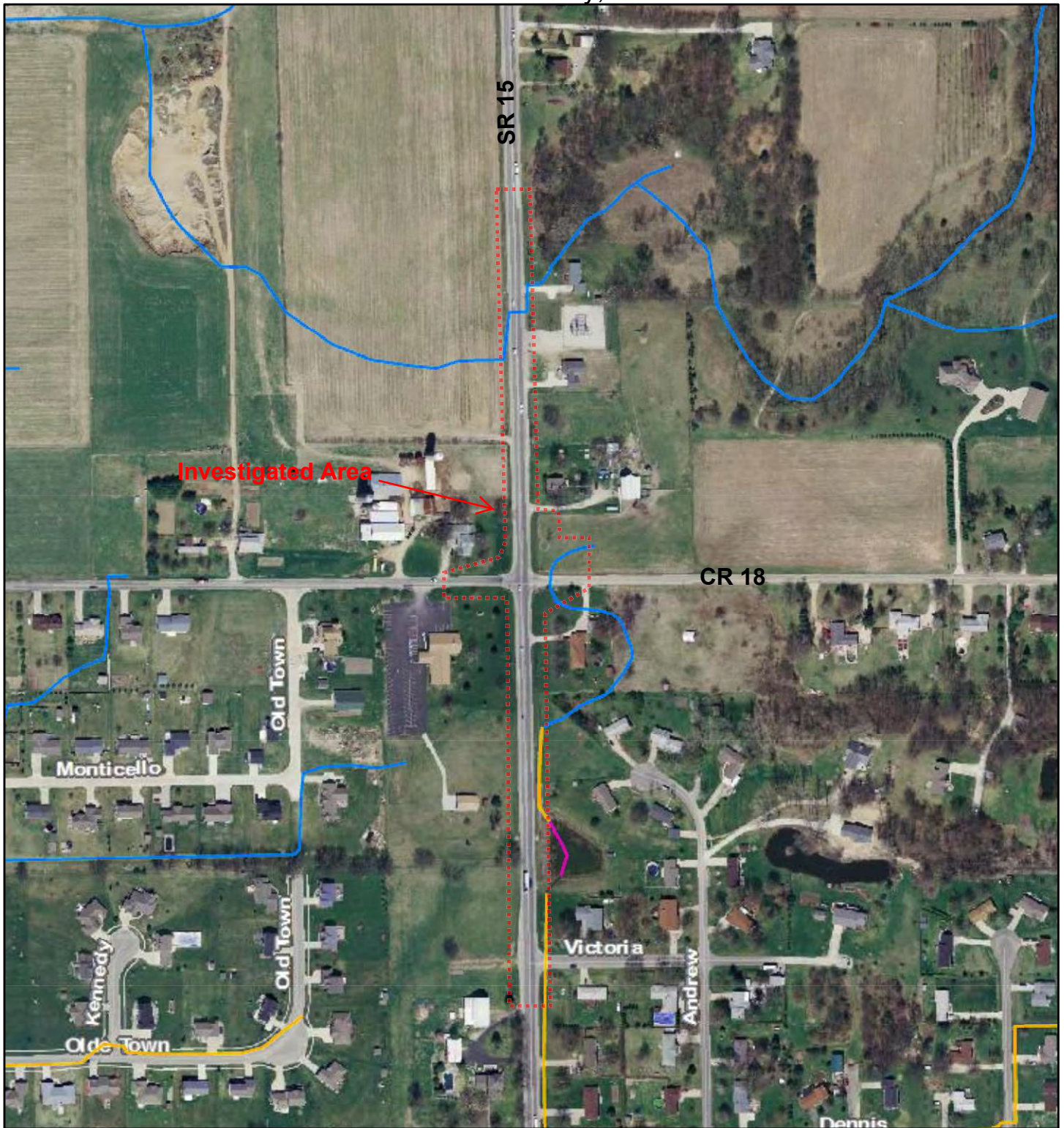
Floodplains - FIRM (Mar 2020)



- Floodway
- 1% Annual Chance Flood Hazard
- 0.2% Annual Chance, Protected by Levee
- 0.2% Annual Chance Flood Hazard

Indiana Spatial Data Portal, UITS, ESRI
 Federal Emergency Management Agency (FEMA), Indiana Department of
 Natural Resources (IDNR)

NHD Flowlines
 SR 15 at CR 18, Des. 1800039
 Elkhart County, IN



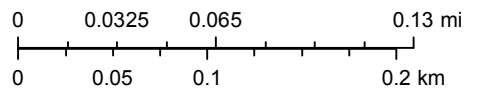
November 5, 2020

1:4,000

Streams (Local-Resolution NHD)

- ArtificialPath
- CanalDitch
- Coastline
- Connector

- Pipeline
- StreamRiver
- Underground Conduit



U.S. Geological Survey
 Indiana Spatial Data Portal, UITS, ESRI



September 29, 2020

Wetlands

- | | | | | | |
|--|--------------------------------|--|-----------------------------------|--|-------|
| | Estuarine and Marine Deepwater | | Freshwater Emergent Wetland | | Lake |
| | Estuarine and Marine Wetland | | Freshwater Forested/Shrub Wetland | | Other |
| | Freshwater Pond | | Riverine | | |

This map is for general reference only. The US Fish and Wildlife Service is not responsible for the accuracy or currentness of the base data shown on this map. All wetlands related data should be used in accordance with the layer metadata found on the Wetlands Mapper web site.