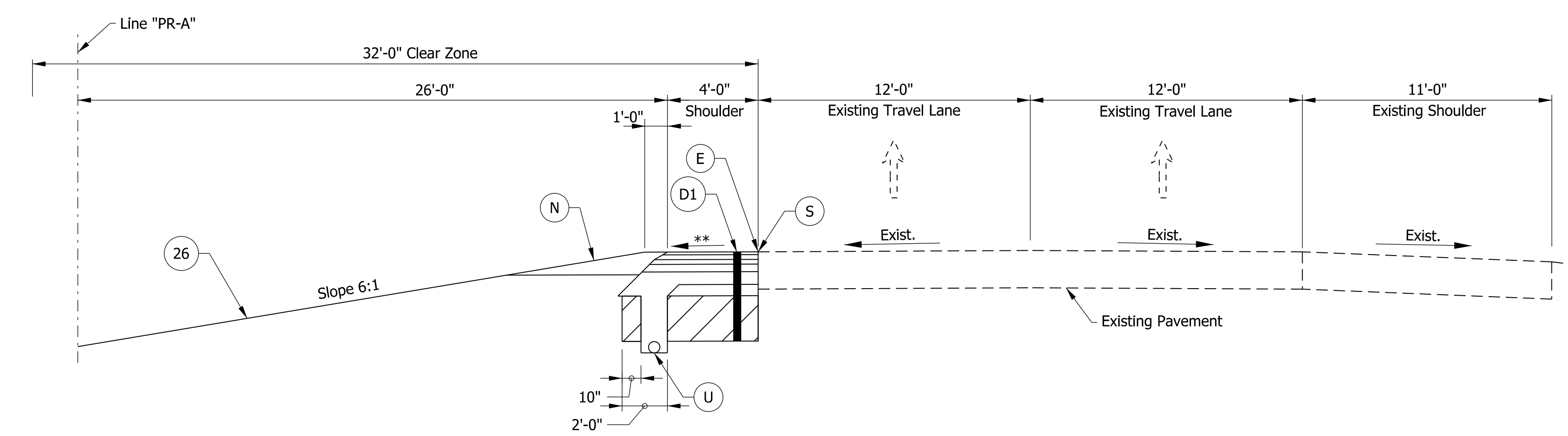
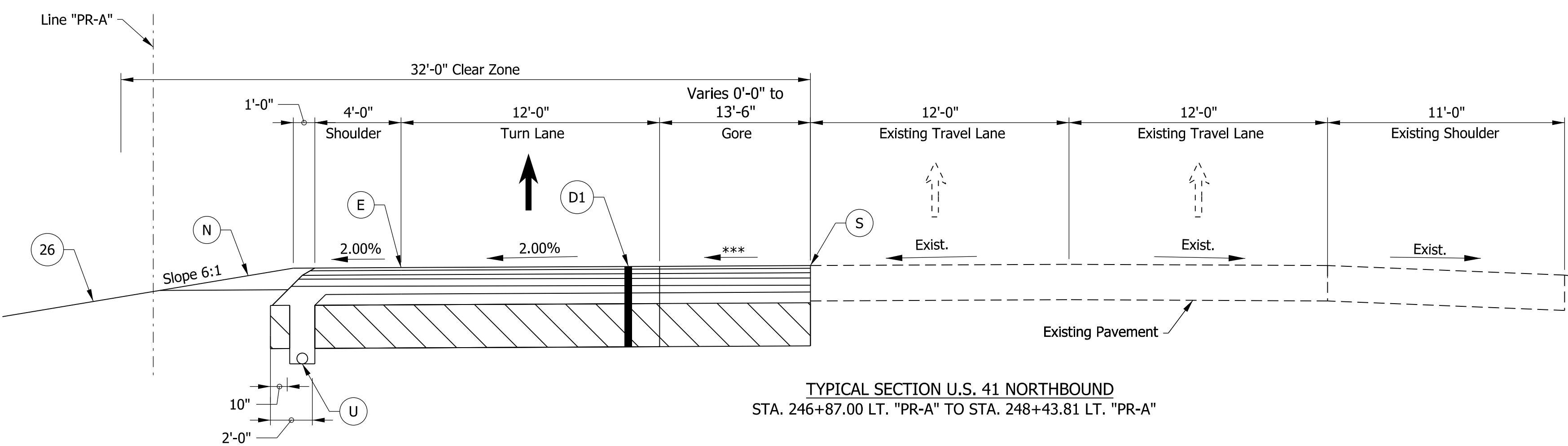


TYPICAL SECTION U.S. 41 NORTHBOUND  
STA. 250+90.00 RT. "PR-A" TO STA. 257+67.50 RT. "PR-A"

**Notes**  
1. Milled HMA Corrugations, Conventional shall be installed per Std. Dwg. E 606-SHCG-02.



TYPICAL SECTION U.S. 41 NORTHBOUND  
STA. 249+83.45 RT. "PR-A" TO STA. 250+90.00 RT. "PR-A"  
STA. 258+21.83 RT. "PR-A" TO STA. 258+60.00 RT. "PR-A"



TYPICAL SECTION U.S. 41 NORTHBOUND  
STA. 246+87.00 LT. "PR-A" TO STA. 248+43.81 LT. "PR-A"

- Legend**
- (D1) 165#/Syd. QC/QA-HMA, 4, 70, Surface, 9.5 mm on 275#/Syd. QC/QA-HMA, 4, 70, Intermediate, 19.0 mm on 880#/Syd. QC/QA-HMA, 4, 64, Base, 25.0 mm on 300#/Syd. QC/QA-HMA, 4, 76, Intermediate OG, 19.0 mm on 6 in. of Compacted Aggregate No. 53 on Subgrade Treatment Type IC
  - (E) Milled HMA Corrugations, Conventional (See Note 1)
  - (N) Compacted Aggregate, No. 53
  - (S) Saw Cut (No Direct Pay)
  - (U) 6 In. Underdrain (See Std. Dwg. No. 718-UNDR-01)
  - (26) Seed Mixture, R
  - \*\* Proposed Cross Slope to Match Existing Slope of Adjacent Lane.
  - \*\*\* Cross Slope Varies. See Spot Elevation Details for Additional Information.

Note to Reviewer: Spot elevation details to be provided in a future submittal.

Note to Reviewer: Safety edge detail to be provided in a future submittal.

Note to Reviewer: Pavement assumed to be asphalt. Final pavement design to be determined in a future submittal.

chellingsworth  
 5/15/2020 5:23:28 pm  
 model:Sheet3  
 file:n:\74927-us 41 intersections\and\h2\cd6\74927-rd-s-is01.dgn

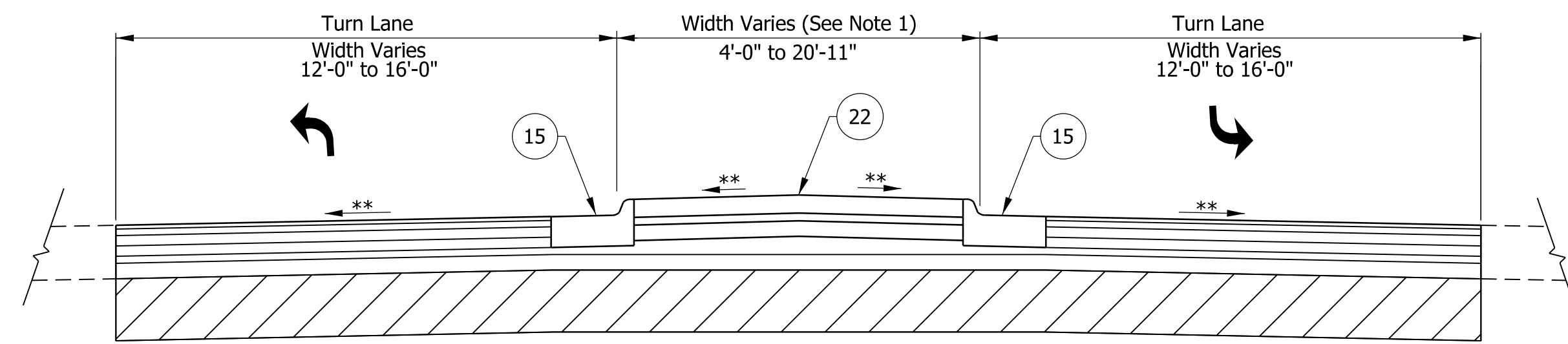
**DRAFT**  
NOT FOR CONSTRUCTION

RECOMMENDED FOR APPROVAL _____	DESIGN ENGINEER _____	DATE _____
DESIGNED: _____ MKM _____	DRAWN: _____ JKH _____	
CHECKED: _____ JLC _____	CHECKED: _____ MKM _____	

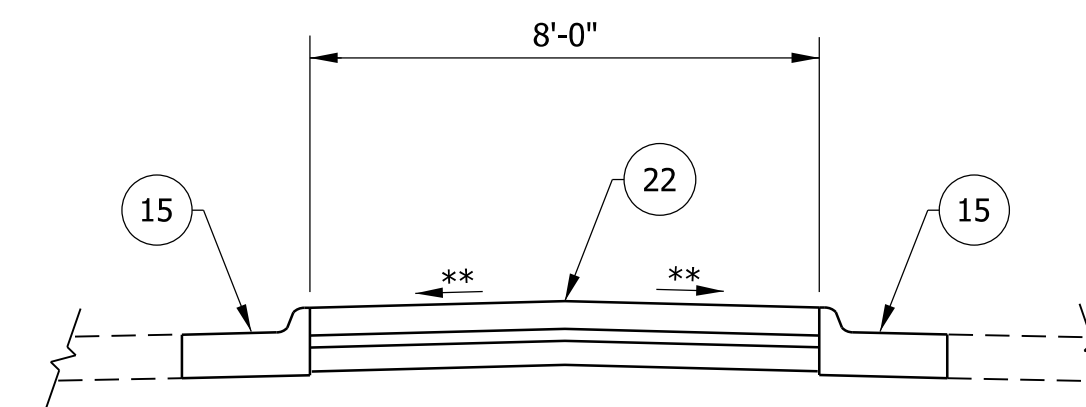
**INDIANA**  
**DEPARTMENT OF TRANSPORTATION**

**ROADWAY TYPICAL CROSS SECTIONS**

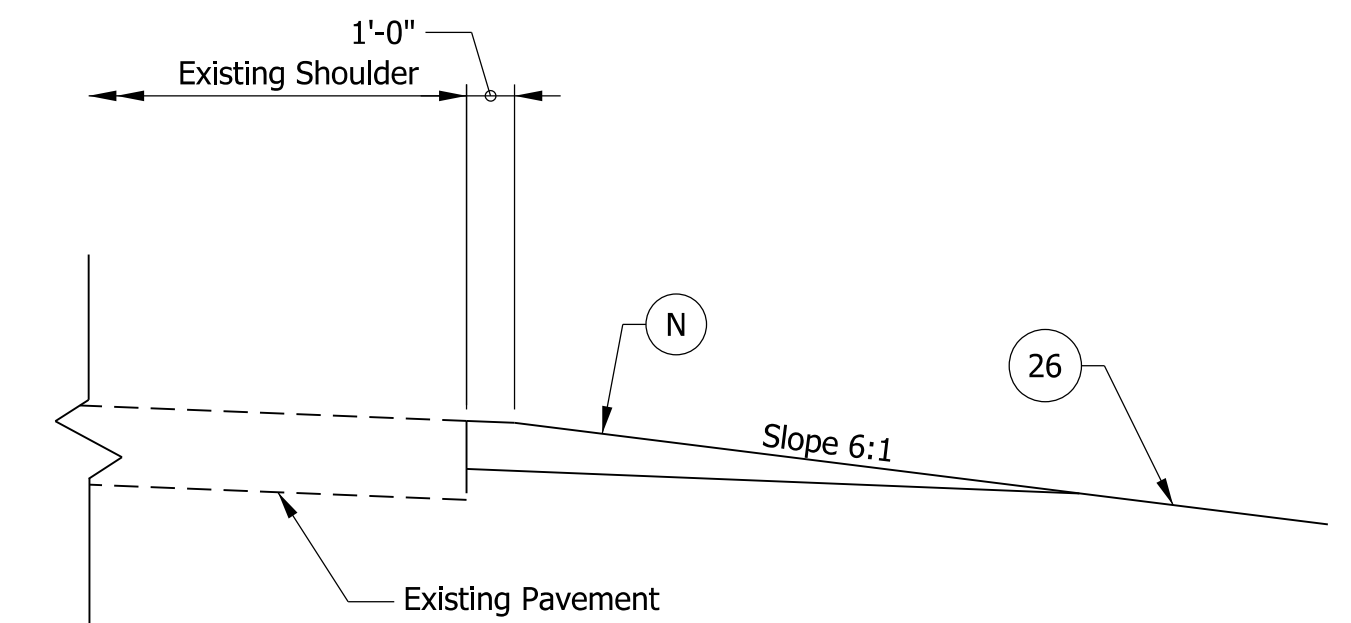
HORIZONTAL SCALE	BRIDGE FILE
1/4"=1'-0"	N/A
VERTICAL SCALE	DESIGNATION
N/A	1800226
SURVEY BOOK	SHEETS TS-03
ELECTRONIC	5 of 47
CONTRACT	PROJECT
R-41474	1800226



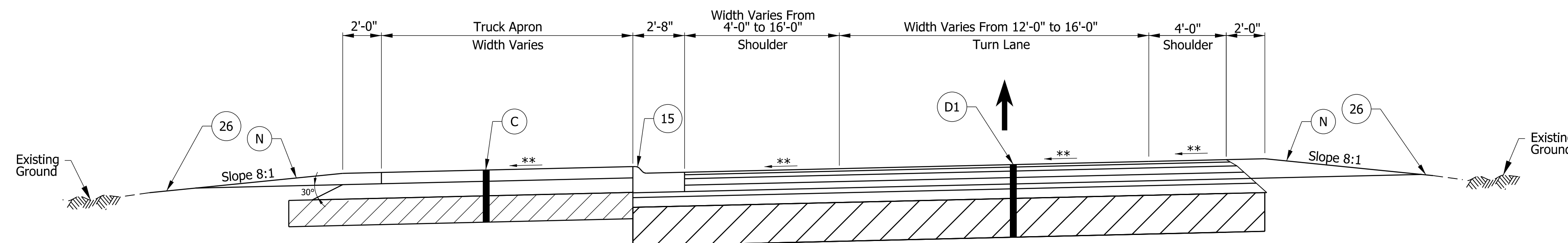
**TYPICAL SECTION U.S. 41 LEFT TURN LANE (AT INTERSECTION)**  
 STA. 249+58.55 "PR-A" TO STA. 250+31.64 "PR-A" U.S. 41 SOUTHBOUND  
 STA. 248+43.81 "PR-A" TO STA. 249+83.45 "PR-A" U.S. 41 NORTHBOUND



**TYPICAL SECTION S.R. 58 MEDIAN ISLANDS (AT INTERSECTION)**  
 STA. 48+90.00 "S-3-PR-1" TO STA. 49+39.43 "S-3-PR-1"  
 STA. 50+80.55 "S-3-PR-1" TO STA. 51+23.00 "S-3-PR-1"



**PARTIAL TYPICAL SECTION U.S. 41 (AGGREGATE SHOULDER)**  
 STA. 251+85.00 LT "PR-A" TO STA. 257+75.00 LT "PR-A"  
 STA. 238+88.00 RT "PR-A" TO STA. 240+43.00 RT "PR-A"  
 STA. 241+33.00 RT "PR-A" TO STA. 246+87.00 RT "PR-A"  
 (Mirror along baseline for U.S. 41 NB)

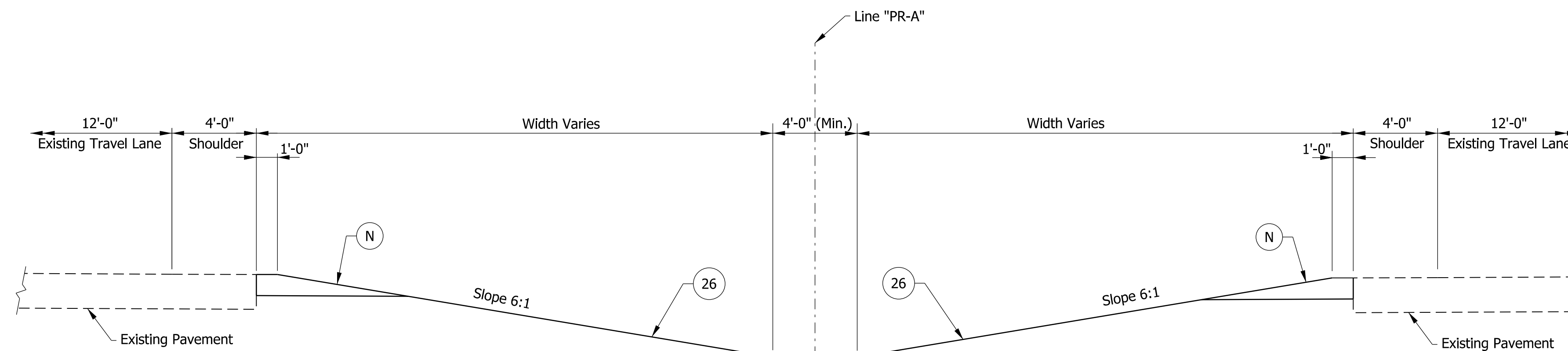


**TYPICAL SECTION LEFT TURN LANE (THRU ROADWAY MEDIAN)**  
 STA. 240+88.72 LT. "PR-A" TO STA. 241+39.83 LT. "PR-A"  
 STA. 257+67.50 RT. "PR-A" TO STA. 258+21.83 RT. "PR-A"

**Legend**

- (C) PCCP, 7 In. w/"Type D-1" Construction Joint @ 18 Ft. Spacing (Typ.) on Subbase for PCCP Consisting of:  
 3 In. of Compacted Aggregate, No. 8 on  
 6 In. of Compacted Aggregate, No. 53 on  
 Subgrade Treatment Type IC
- (D1) 165#/Syd. QC/QA-HMA, 4, 70, Surface, 9.5 mm on  
 275#/Syd. QC/QA-HMA, 4, 70, Intermediate, 19.0 mm on  
 880#/Syd. QC/QA-HMA, 4, 64, Base, 25.0 mm on  
 300#/Syd. QC/QA-HMA, 4, 76, Intermediate OG, 19.0 mm on  
 6 in. of Compacted Aggregate No. 53 on  
 Subgrade Treatment Type IC
- (N) Milled HMA Corrugations, Conventional (See Note 2)
- (S) Saw Cut (No Direct Pay)
- (22) Center Curb, D, Concrete  
 (See Std. Dwg. E-605-CNCC-03)
- (26) Seed Mixture, R
- (15) Curb And Gutter, B, Concrete (Sloping)  
 (See Std. Dwg. E-605-CCCG-01)

\*\* Cross Slope Varies. See Spot Elevation Details for Additional Information.



**TYPICAL SECTION U.S. 41 (MEDIAN GRADING)**  
 (SEE NOTE 1)

**Notes**

1. Width and locations vary. See Cross Sections.

Note to Reviewer: Spot elevation details to be provided in a future submittal.

Note to Reviewer: Safety edge detail to be provided in a future submittal.

Note to Reviewer: Pavement assumed to be asphalt. Final pavement design to be determined in a future submittal.

chollingsworth  
 5/15/2020 5:23:29 pm  
 model:Sheet4  
 file:n:\74927-us 41 intersections\and\h2\c6\74927-rs-is01.dgn

**DRAFT**  
 NOT FOR CONSTRUCTION

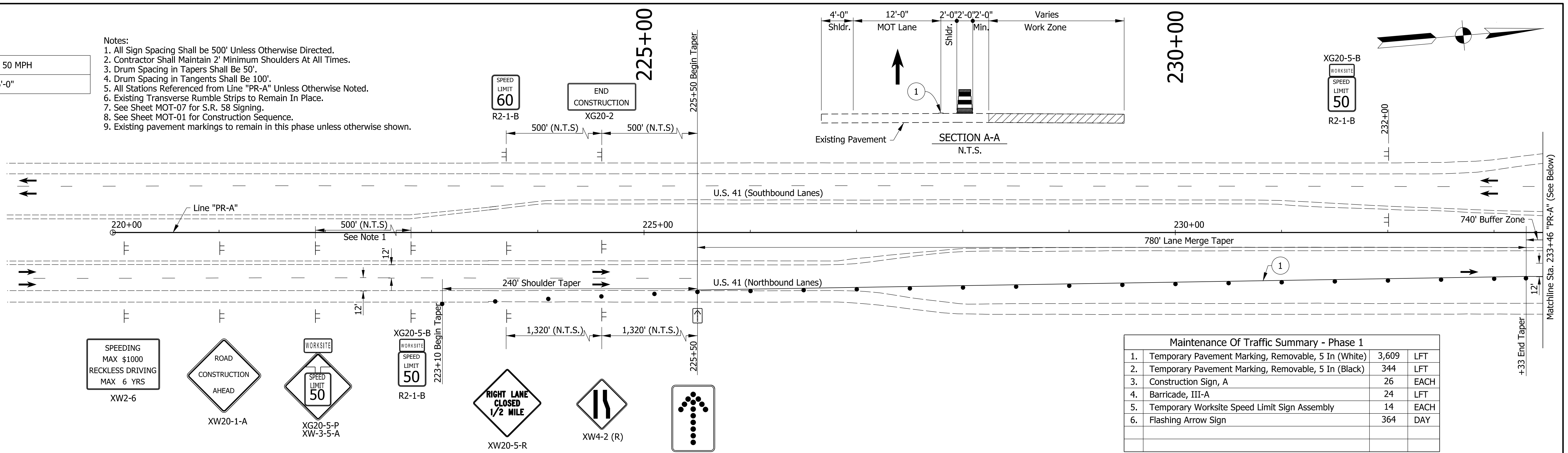
RECOMMENDED FOR APPROVAL _____	DESIGN ENGINEER _____	DATE _____
DESIGNED: _____ MKM _____	DRAWN: _____ JKH _____	
CHECKED: _____ JLC _____	CHECKED: _____ MKM _____	

INDIANA  
 DEPARTMENT OF TRANSPORTATION  
 ROADWAY TYPICAL CROSS SECTIONS

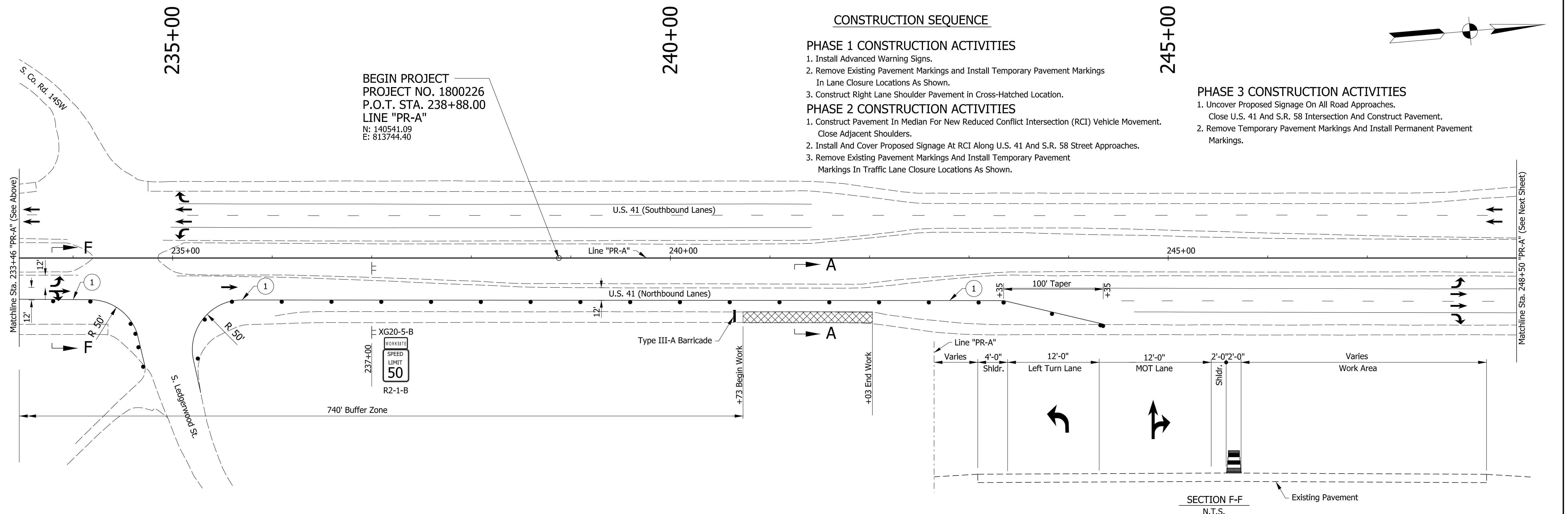
HORIZONTAL SCALE	BRIDGE FILE
1/4"=1'-0"	N/A
VERTICAL SCALE	DESIGNATION
N/A	1800226
SURVEY BOOK	SHEETS TS-04
ELECTRONIC	6 of 47
CONTRACT	PROJECT
R-41474	1800226

Construction Design Speed: 50 MPH  
 Construction Clear Zone: 16'-0"

- Notes:
1. All Sign Spacing Shall be 500' Unless Otherwise Directed.
  2. Contractor Shall Maintain 2' Minimum Shoulders At All Times.
  3. Drum Spacing in Tapers Shall Be 50'.
  4. Drum Spacing in Tangents Shall Be 100'.
  5. All Stations Referenced From Line "PR-A" Unless Otherwise Noted.
  6. Existing Transverse Rumble Strips to Remain in Place.
  7. See Sheet MOT-07 for S.R. 58 Signing.
  8. See Sheet MOT-01 for Construction Sequence.
  9. Existing pavement markings to remain in this phase unless otherwise shown.



Maintenance Of Traffic Summary - Phase 1		
1. Temporary Pavement Marking, Removable, 5 In (White)	3,609	LFT
2. Temporary Pavement Marking, Removable, 5 In (Black)	344	LFT
3. Construction Sign, A	26	EACH
4. Barricade, III-A	24	LFT
5. Temporary Worksite Speed Limit Sign Assembly	14	EACH
6. Flashing Arrow Sign	364	DAY



- CONSTRUCTION SEQUENCE**
- PHASE 1 CONSTRUCTION ACTIVITIES**
1. Install Advanced Warning Signs.
  2. Remove Existing Pavement Markings and Install Temporary Pavement Markings In Lane Closure Locations As Shown.
  3. Construct Right Lane Shoulder Pavement in Cross-Hatched Location.
- PHASE 2 CONSTRUCTION ACTIVITIES**
1. Construct Pavement in Median For New Reduced Conflict Intersection (RCI) Vehicle Movement. Close Adjacent Shoulders.
  2. Install And Cover Proposed Signage At RCI Along U.S. 41 And S.R. 58 Street Approaches.
  3. Remove Existing Pavement Markings And Install Temporary Pavement Markings In Traffic Lane Closure Locations As Shown.
- PHASE 3 CONSTRUCTION ACTIVITIES**
1. Uncover Proposed Signage On All Road Approaches. Close U.S. 41 And S.R. 58 Intersection And Construct Pavement.
  2. Remove Temporary Pavement Markings And Install Permanent Pavement Markings.

Maintenance Of Traffic Legend

	Construction Area
	Standard Drum
	Direction Of Traffic
	Barricade, III-A (12 Lft.)
	Construction Sign, A

Temporary Pavement Marking, Removable, 5 In. Notes:

① Temporary Pavement Marking, 5 in. (White)

**DRAFT**  
 NOT FOR CONSTRUCTION

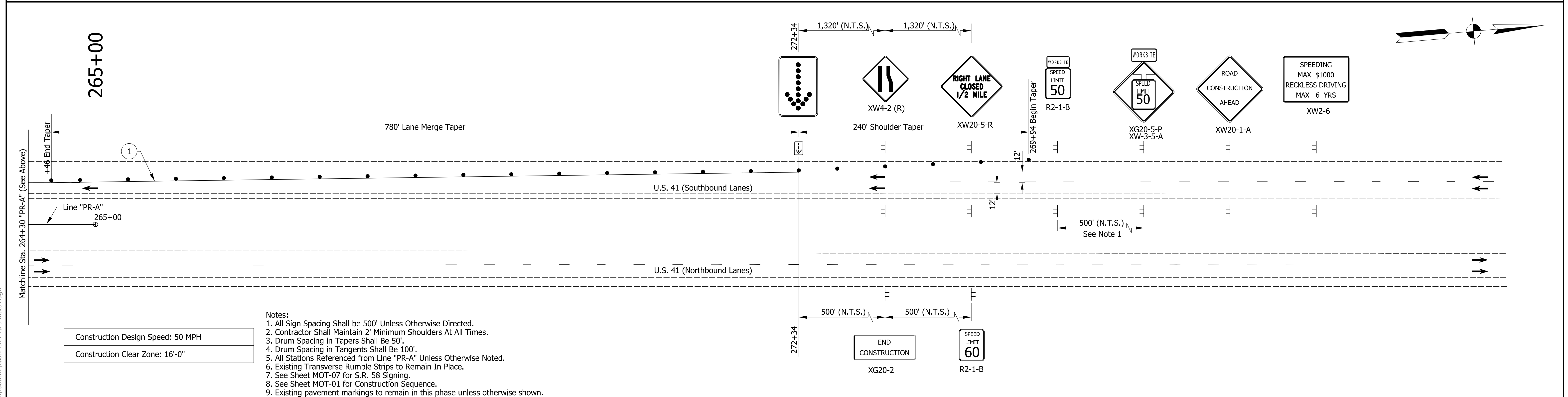
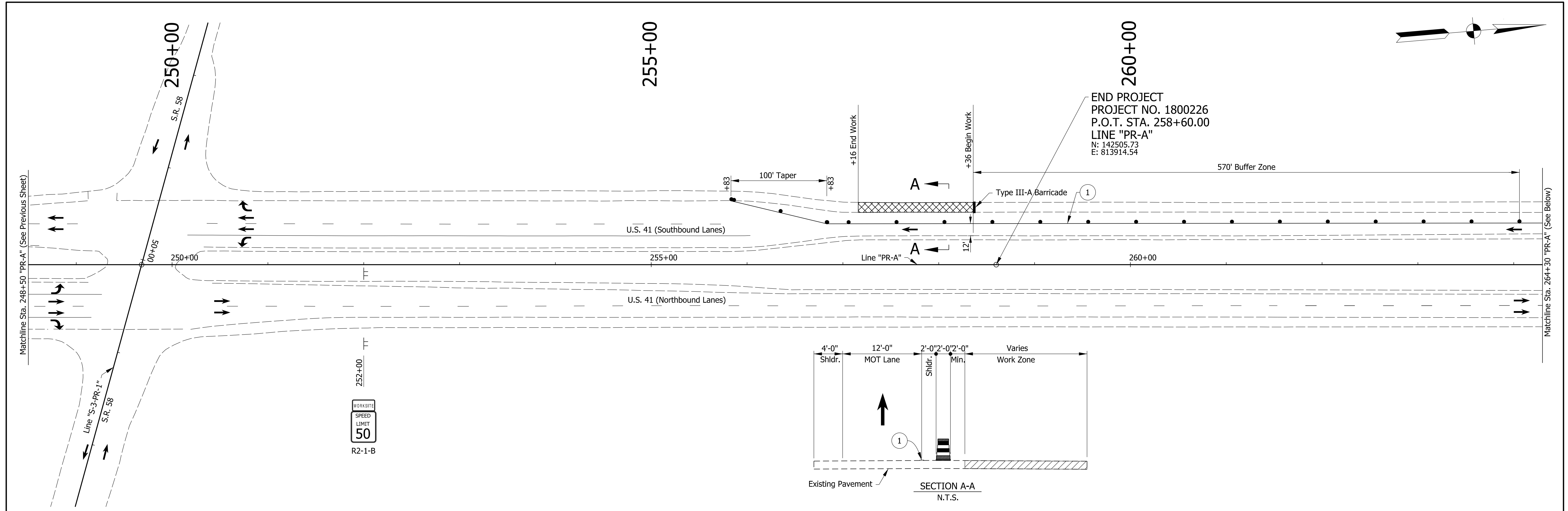
RECOMMENDED FOR APPROVAL	DESIGN ENGINEER	DATE
DESIGNED: MKM	DRAWN: JKH	
CHECKED: JLC	CHECKED: MKM	

INDIANA DEPARTMENT OF TRANSPORTATION

MAINTENANCE OF TRAFFIC PHASE 1

HORIZONTAL SCALE	BRIDGE FILE	
1"=50'	N/A	
VERTICAL SCALE	DESIGNATION	
N/A	1800226	
SURVEY BOOK	SHEETS	MOT-01
ELECTRONIC	7	of 47
CONTRACT	PROJECT	
R-41474	1800226	

JKhayes  
 5/15/2020 5:23:32 pm  
 model-sheet1  
 file:n:\74927-us 41 intersections\and\h\z\c\6\74927-us 41.mxd



Construction Design Speed: 50 MPH  
 Construction Clear Zone: 16'-0"

- Notes:
1. All Sign Spacing Shall be 500' Unless Otherwise Directed.
  2. Contractor Shall Maintain 2' Minimum Shoulders At All Times.
  3. Drum Spacing in Tapers Shall Be 50'.
  4. Drum Spacing in Tangents Shall Be 100'.
  5. All Stations Referenced from Line "PR-A" Unless Otherwise Noted.
  6. Existing Transverse Rumble Strips to Remain In Place.
  7. See Sheet MOT-07 for S.R. 58 Signing.
  8. See Sheet MOT-01 for Construction Sequence.
  9. Existing pavement markings to remain in this phase unless otherwise shown.

Maintenance Of Traffic Legend

- ▨ Construction Area
- Standard Drum
- Direction Of Traffic
- Barricade, III-A (12 Lft.)
- ⊥ Construction Sign, A

Temporary Pavement Marking, Removable, 5 In. Notes:

- ① Temporary Pavement Marking, 5 in. (White)

**DRAFT**  
NOT FOR CONSTRUCTION

RECOMMENDED FOR APPROVAL \_\_\_\_\_ DESIGN ENGINEER \_\_\_\_\_ DATE \_\_\_\_\_

DESIGNED: MKM DRAWN: JKH

CHECKED: JLC CHECKED: MKM

INDIANA  
DEPARTMENT OF TRANSPORTATION

MAINTENANCE OF TRAFFIC  
PHASE 1

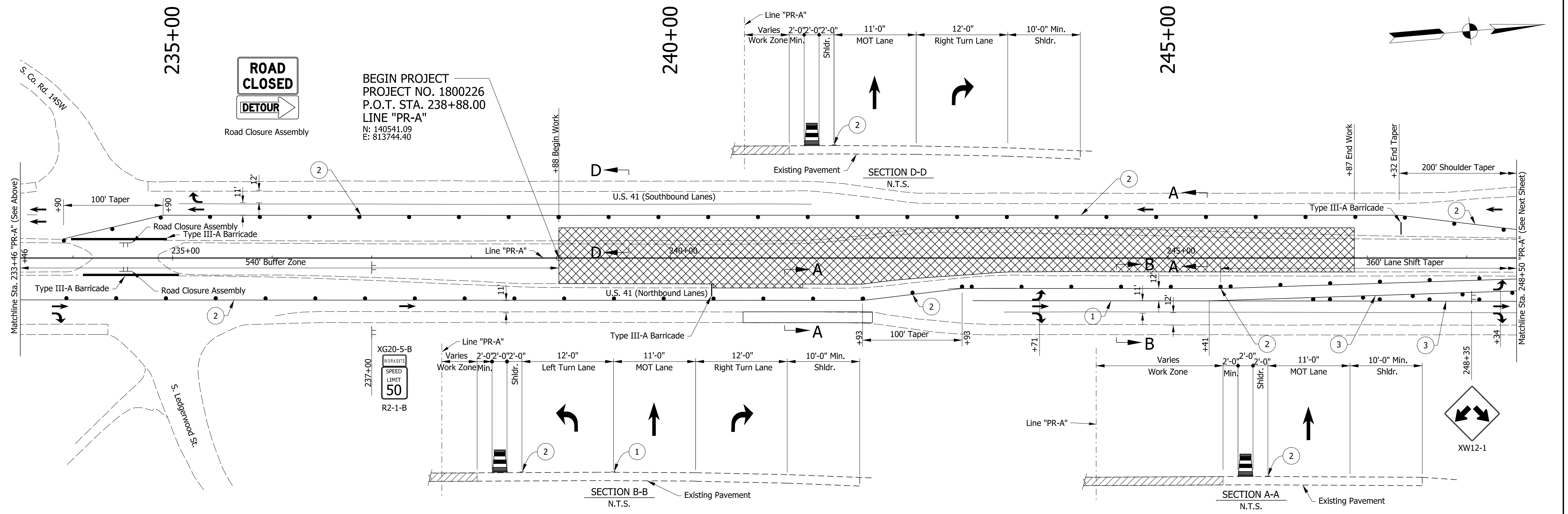
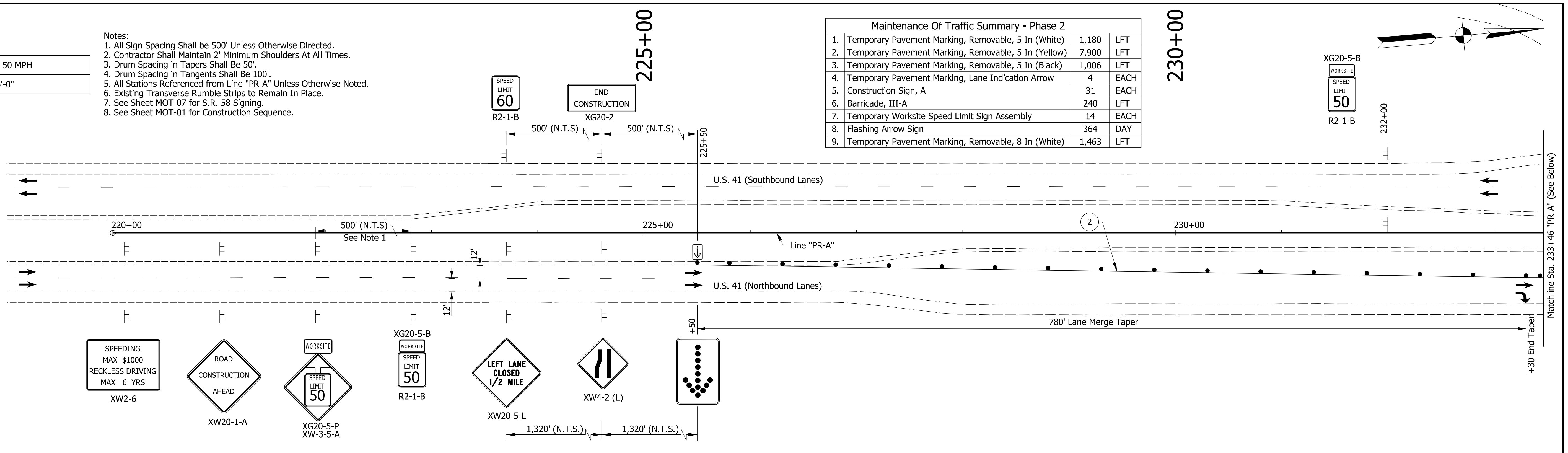
HORIZONTAL SCALE	BRIDGE FILE
1"=50'	N/A
VERTICAL SCALE	DESIGNATION
N/A	1800226
SURVEY BOOK	SHEETS MOT-02
ELECTRONIC	8 of 47
CONTRACT	PROJECT
R-41474	1800226

jkhayes  
 5/15/2020 5:23:34 pm  
 model=Sheet2  
 file=r:\74927-us 41 intersections\and\h\z\c\6\74927-us 41-mot01.dgn

Construction Design Speed: 50 MPH  
 Construction Clear Zone: 16'-0"

- Notes:
- All Sign Spacing Shall be 500' Unless Otherwise Directed.
  - Contractor Shall Maintain 2' Minimum Shoulders At All Times.
  - Drum Spacing in Tapers Shall Be 50'.
  - Drum Spacing in Tangents Shall Be 100'.
  - All Stations Referenced from Line "PR-A" Unless Otherwise Noted.
  - Existing Transverse Rumble Strips to Remain In Place.
  - See Sheet MOT-07 for S.R. 58 Signing.
  - See Sheet MOT-01 for Construction Sequence.

Maintenance Of Traffic Summary - Phase 2		
1. Temporary Pavement Marking, Removable, 5 In (White)	1,180	LFT
2. Temporary Pavement Marking, Removable, 5 In (Yellow)	7,900	LFT
3. Temporary Pavement Marking, Removable, 5 In (Black)	1,006	LFT
4. Temporary Pavement Marking, Lane Indication Arrow	4	EACH
5. Construction Sign, A	31	EACH
6. Barricade, III-A	240	LFT
7. Temporary Worksite Speed Limit Sign Assembly	14	EACH
8. Flashing Arrow Sign	364	DAY
9. Temporary Pavement Marking, Removable, 8 In (White)	1,463	LFT



Maintenance Of Traffic Legend

	Construction Area
	Standard Drum
	Direction Of Traffic
	Barricade, III-A (12 Lft.)
	Construction Sign, A

Temporary Pavement Marking, Removable, 5 In. Notes:

	1 Temporary Pavement Marking, 5 in. (White)
	2 Temporary Pavement Marking, 5 in. (Yellow)
	3 Temporary Pavement Marking, 8 in. (White)

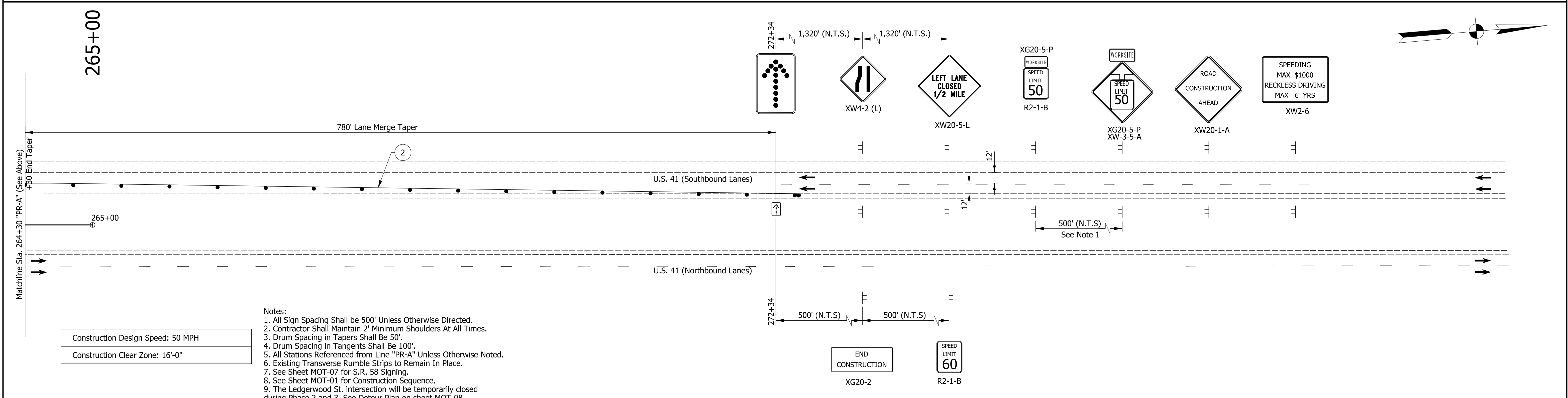
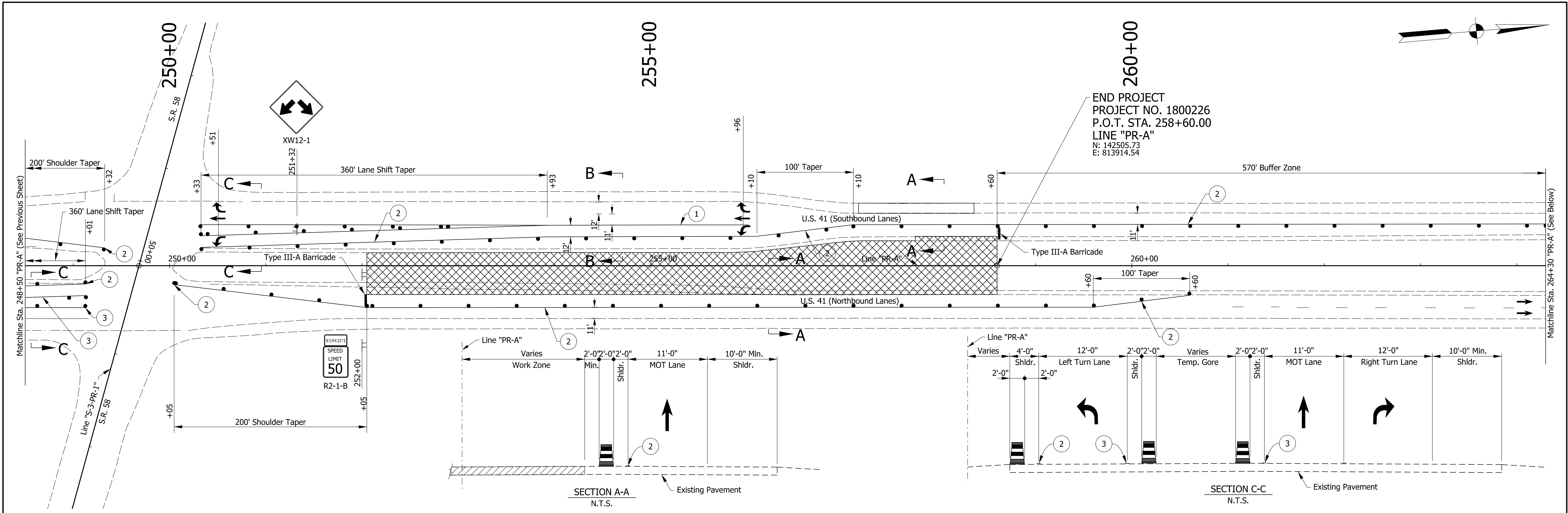
**DRAFT**  
 NOT FOR CONSTRUCTION

RECOMMENDED FOR APPROVAL	DESIGN ENGINEER	DATE
DESIGNED: MKM	DRAWN: JKH	
CHECKED: JLC	CHECKED: MKM	

INDIANA DEPARTMENT OF TRANSPORTATION  
 MAINTENANCE OF TRAFFIC PHASE 2

HORIZONTAL SCALE	BRIDGE FILE	
1"=50'	N/A	
VERTICAL SCALE	DESIGNATION	
N/A	1800226	
SURVEY BOOK	SHEETS	MOT-03
ELECTRONIC	9	of 47
CONTRACT	R-41474	PROJECT
		1800226

chellingsworth  
 5/15/2020 5:23:35 pm  
 model:Sheet1  
 file:n:\74927-us 41 intersections\and\h\z\cda\74927-us 41-mot02.dgn



- Notes:
1. All Sign Spacing Shall be 500' Unless Otherwise Directed.
  2. Contractor Shall Maintain 2' Minimum Shoulders At All Times.
  3. Drum Spacing in Tapers Shall Be 50'.
  4. Drum Spacing in Tangents Shall Be 100'.
  5. All Stations Referenced from Line "PR-A" Unless Otherwise Noted.
  6. Existing Transverse Rumble Strips to Remain In Place.
  7. See Sheet MOT-07 for S.R. 58 Signing.
  8. See Sheet MOT-01 for Construction Sequence.
  9. The Ledgerwood St. intersection will be temporarily closed during Phase 2 and 3. See Detour Plan on sheet MOT-08.

Construction Design Speed: 50 MPH  
 Construction Clear Zone: 16'-0"

Maintenance Of Traffic Legend

	Construction Area
	Standard Drum
	Direction Of Traffic
	Barricade, III-A (12 Lft.)
	Construction Sign, A

Temporary Pavement Marking, Removable, 5 In. Notes:

	1 Temporary Pavement Marking, 5 in. (White)
	2 Temporary Pavement Marking, 5 in. (Yellow)
	3 Temporary Pavement Marking, 8 in. (White)

**DRAFT**  
 NOT FOR CONSTRUCTION

RECOMMENDED FOR APPROVAL _____	DESIGN ENGINEER _____	DATE _____
DESIGNED: _____ MKM _____	DRAWN: _____ JKH _____	
CHECKED: _____ JLC _____	CHECKED: _____ MKM _____	

INDIANA DEPARTMENT OF TRANSPORTATION  
 MAINTENANCE OF TRAFFIC PHASE 2

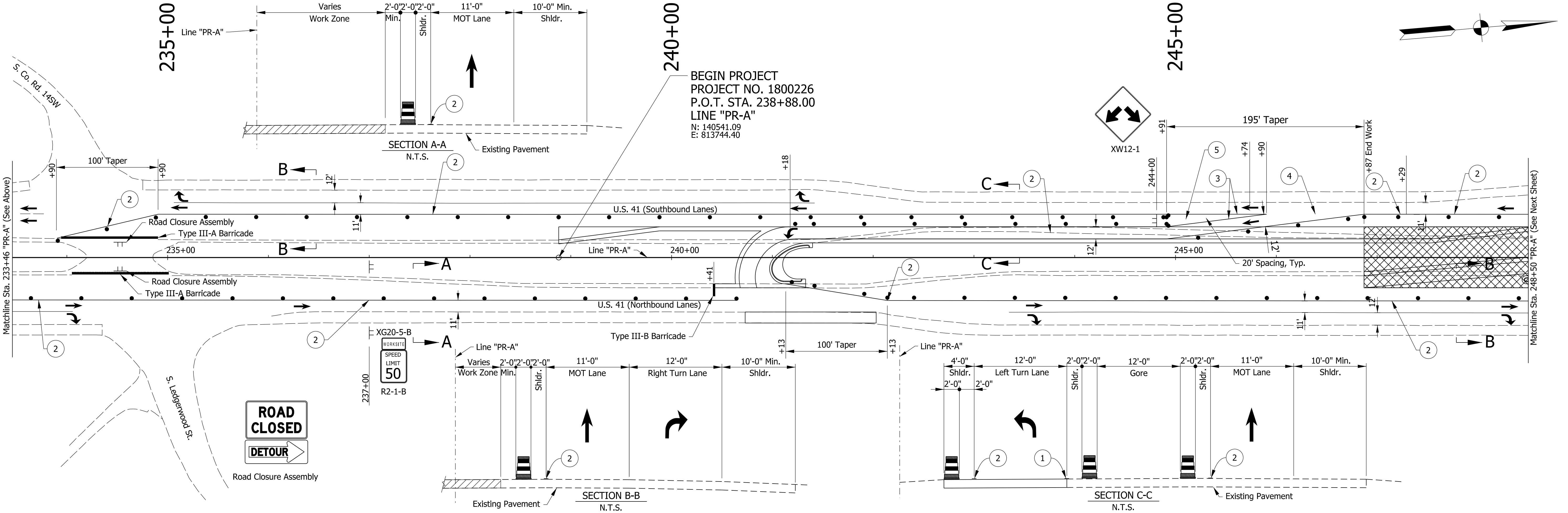
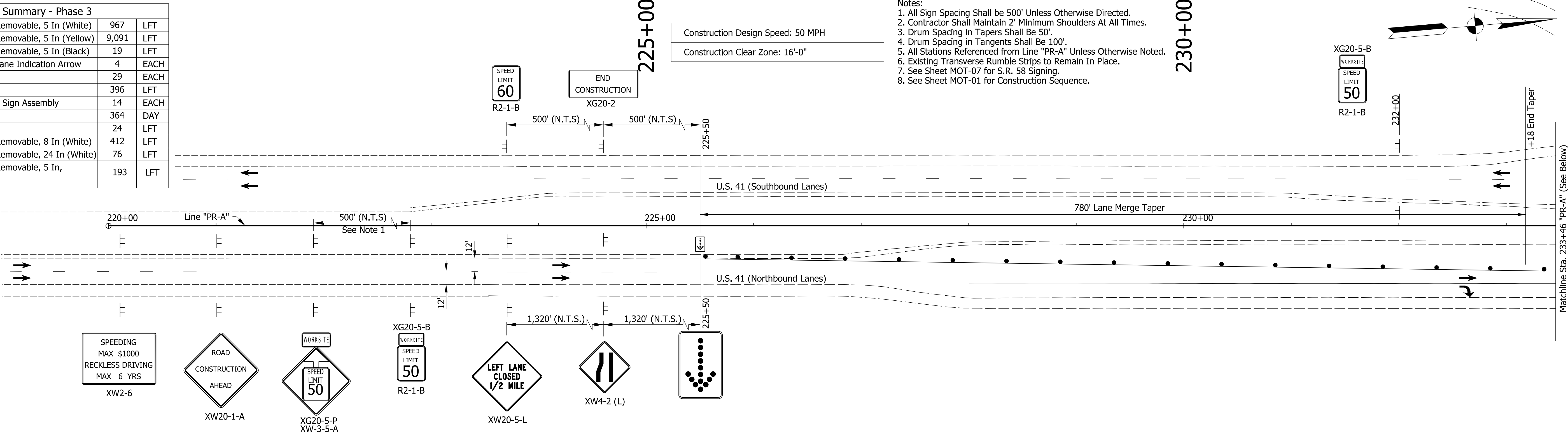
HORIZONTAL SCALE	BRIDGE FILE
1"=50'	N/A
VERTICAL SCALE	DESIGNATION
N/A	1800226
SURVEY BOOK	SHEETS MOT-04
ELECTRONIC	10 of 47
CONTRACT	PROJECT
R-41474	1800226

challengesworth  
 5/15/2020 5:23:36 pm  
 model:Sheet2  
 file:n:\74927-us 41 intersections\and\h\z\cds\74927-us 41-mot02.dgn

Maintenance Of Traffic Summary - Phase 3		
1. Temporary Pavement Marking, Removable, 5 In (White)	967	LFT
2. Temporary Pavement Marking, Removable, 5 In (Yellow)	9,091	LFT
3. Temporary Pavement Marking, Removable, 5 In (Black)	19	LFT
4. Temporary Pavement Marking, Lane Indication Arrow	4	EACH
5. Construction Sign, A	29	EACH
6. Barricade, III-A	396	LFT
7. Temporary Worksite Speed Limit Sign Assembly	14	EACH
8. Flashing Arrow Sign	364	DAY
9. Barricade, III-B	24	LFT
10. Temporary Pavement Marking, Removable, 8 In (White)	412	LFT
11. Temporary Pavement Marking, Removable, 24 In (White)	76	LFT
12. Temporary Pavement Marking, Removable, 5 In, Dotted (White)	193	LFT

Construction Design Speed: 50 MPH  
 Construction Clear Zone: 16'-0"

- Notes:
- All Sign Spacing Shall be 500' Unless Otherwise Directed.
  - Contractor Shall Maintain 2' Minimum Shoulders At All Times.
  - Drum Spacing in Tapers Shall Be 50'.
  - Drum Spacing in Tangents Shall Be 100'.
  - All Stations Referenced from Line "PR-A" Unless Otherwise Noted.
  - Existing Transverse Rumble Strips to Remain In Place.
  - See Sheet MOT-07 for S.R. 58 Signing.
  - See Sheet MOT-01 for Construction Sequence.



Maintenance Of Traffic Legend	
	Construction Area
	Standard Drum
	Direction Of Traffic
	Barricade, III-A (12 Lft.)
	Barricade, III-B (12 Lft.)
	Construction Sign, A

Temporary Pavement Marking, Removable, 5 In. Notes:			
1	Temporary Pavement Marking, 5 in. (White)	4	Temporary Pavement Marking, 5 in. (White) (3' Stripe, 6' Skip)
2	Temporary Pavement Marking, 5 in. (Yellow)	5	Temporary Transverse Pavement Marking, 24 in. (White)
3	Temporary Pavement Marking, 8 in. (White)		

**DRAFT**  
 NOT FOR CONSTRUCTION

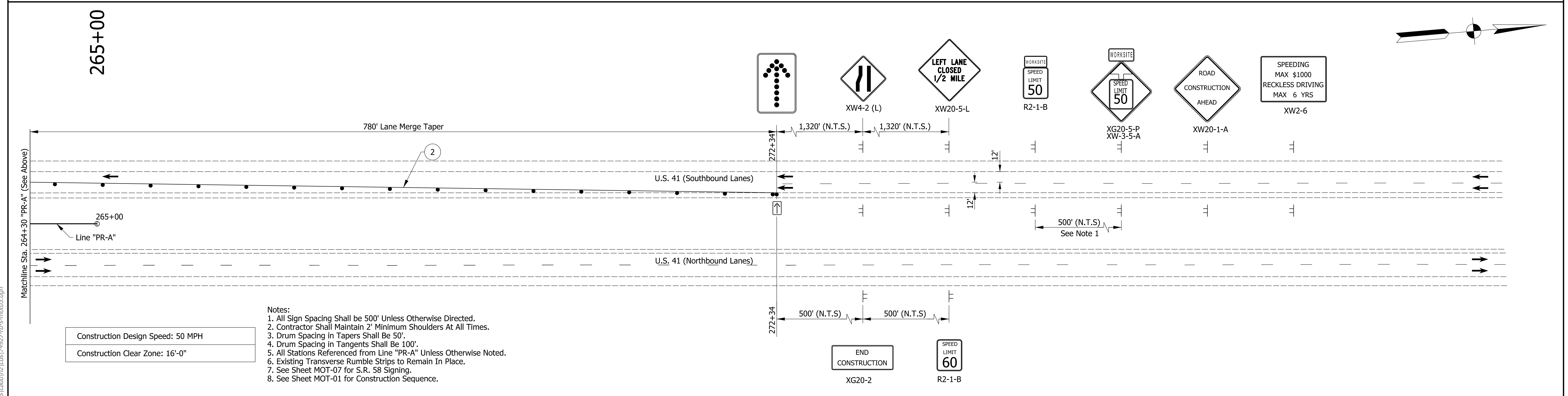
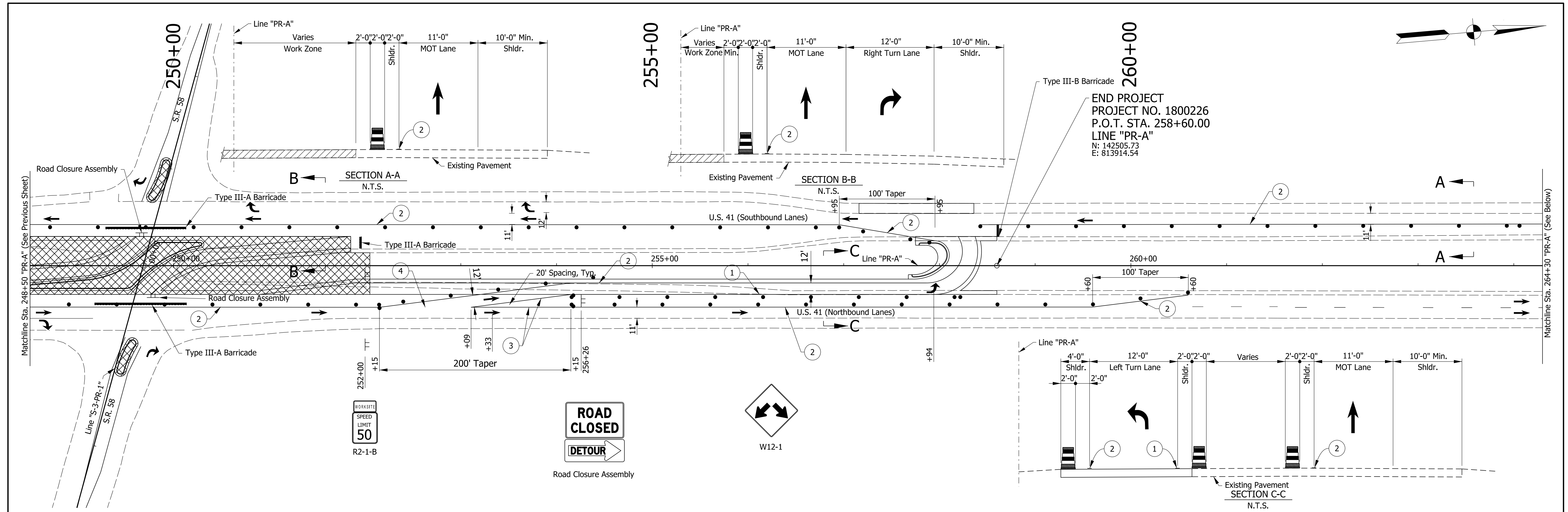
RECOMMENDED FOR APPROVAL		DESIGN ENGINEER		DATE	
DESIGNED: MKM	DRAWN: JKH				
CHECKED: JLC	CHECKED: MKM				

INDIANA  
 DEPARTMENT OF TRANSPORTATION

MAINTENANCE OF TRAFFIC  
 PHASE 3

HORIZONTAL SCALE		BRIDGE FILE	
1"=50'		N/A	
VERTICAL SCALE		DESIGNATION	
N/A		1800226	
SURVEY BOOK		SHEETS	
ELECTRONIC	11	of	47
CONTRACT		PROJECT	
R-41474			1800226

JKhayes  
 5/15/2020 5:23:38 pm  
 model:Sheet1  
 file:n:\74927-us 41 intersections\and\h\z\c\6\74927-us 41.mxd



- Notes:
1. All Sign Spacing Shall be 500' Unless Otherwise Directed.
  2. Contractor Shall Maintain 2' Minimum Shoulders At All Times.
  3. Drum Spacing in Tapers Shall Be 50'.
  4. Drum Spacing in Tangents Shall Be 100'.
  5. All Stations Referenced from Line "PR-A" Unless Otherwise Noted.
  6. Existing Transverse Rumble Strips to Remain In Place.
  7. See Sheet MOT-07 for S.R. 58 Signing.
  8. See Sheet MOT-01 for Construction Sequence.

Construction Design Speed: 50 MPH  
 Construction Clear Zone: 16'-0"

Maintenance Of Traffic Legend

	Construction Area
	Standard Drum
	Direction Of Traffic
	Barricade, III-A (12 Lft.)
	Barricade, III-B (12 Lft.)
	Construction Sign, A

Temporary Pavement Marking, Removable, 5 In. Notes:

	1 Temporary Pavement Marking, 5 in. (White)		4 Temporary Pavement Marking, 5 in. (White) (3' Stripe, 6' Skip)
	2 Temporary Pavement Marking, 5 in. (Yellow)		5 Temporary Transverse Pavement Marking, 24 in. (White)
	3 Temporary Pavement Marking, 8 in. (Yellow)		

**DRAFT**  
 NOT FOR CONSTRUCTION

RECOMMENDED FOR APPROVAL _____	DESIGN ENGINEER _____	DATE _____
DESIGNED: _____ MKM _____	DRAWN: _____ JKH _____	
CHECKED: _____ JLC _____	CHECKED: _____ MKM _____	

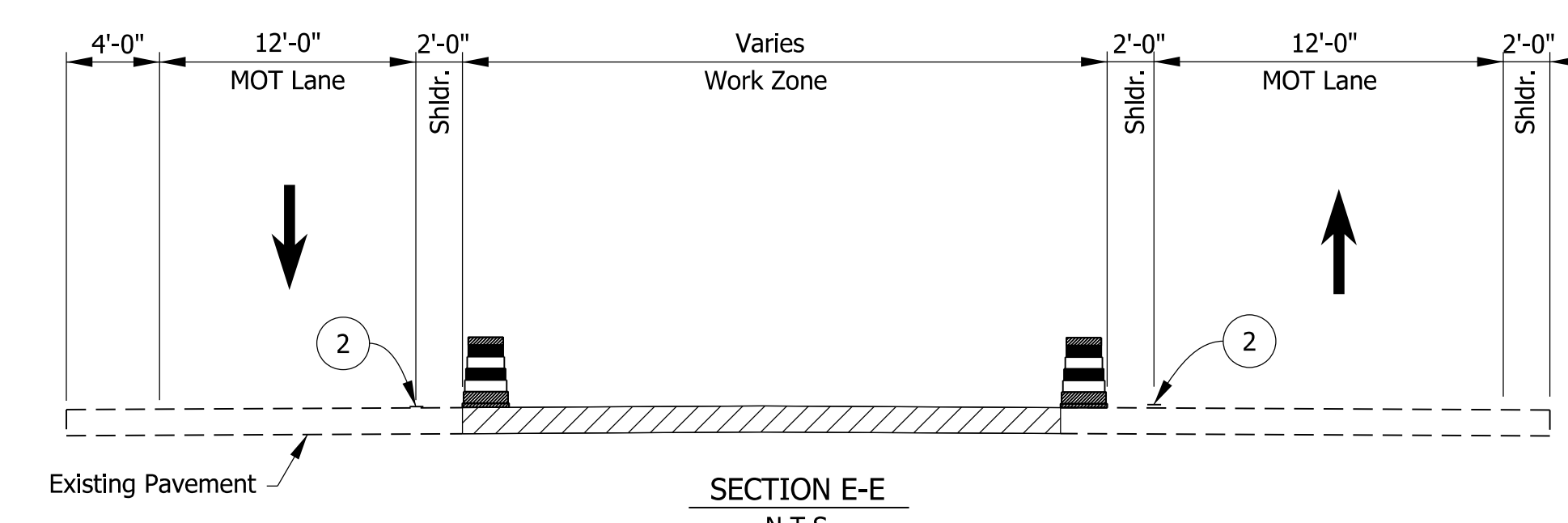
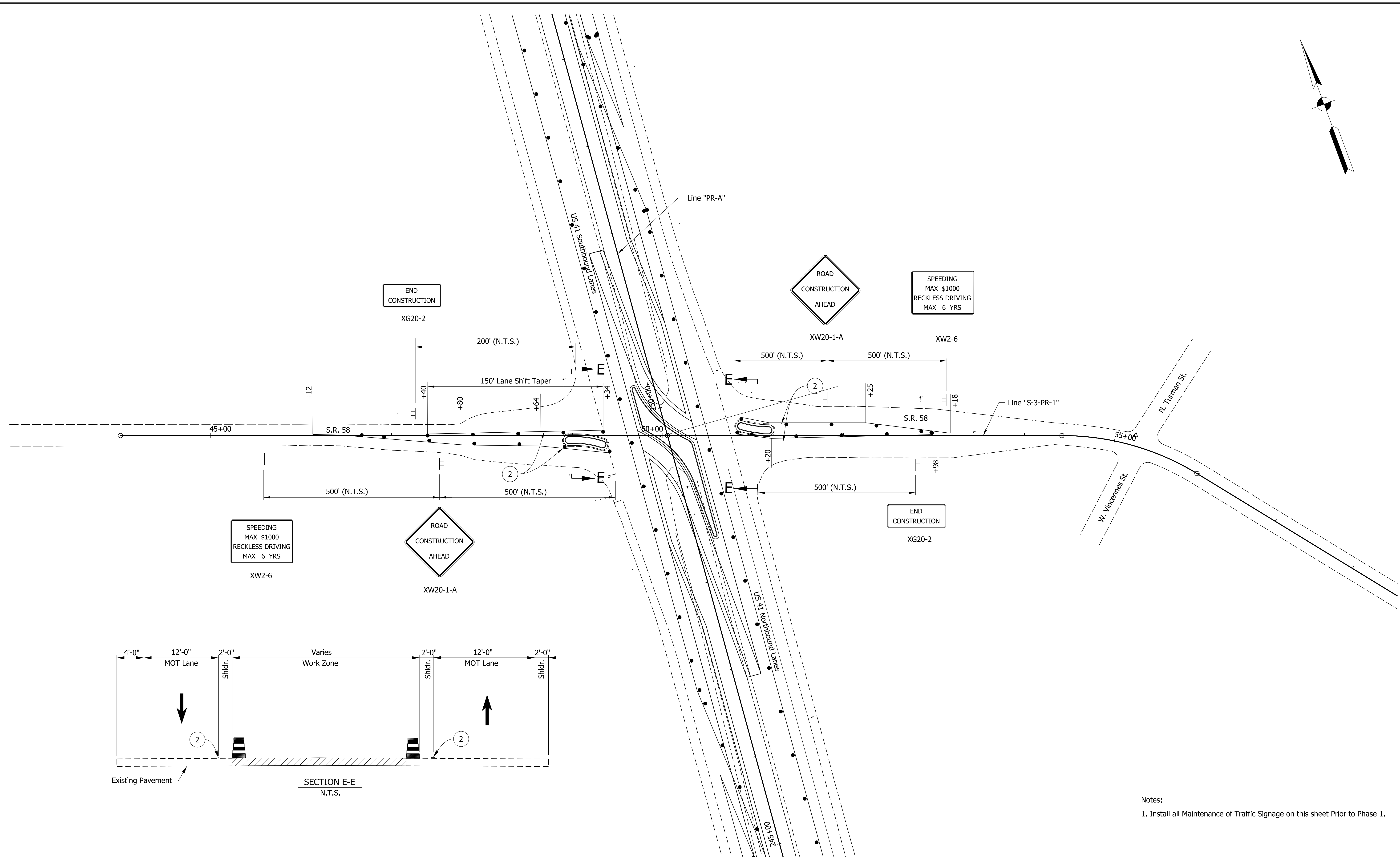
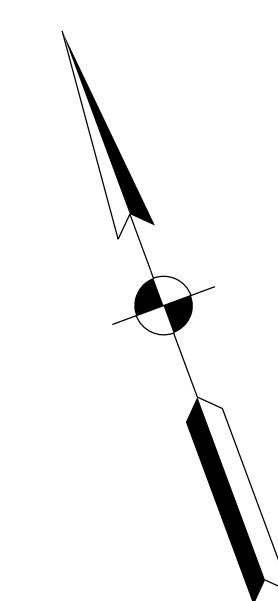
INDIANA  
 DEPARTMENT OF TRANSPORTATION

MAINTENANCE OF TRAFFIC  
 PHASE 3

HORIZONTAL SCALE	BRIDGE FILE
1"=50'	N/A
VERTICAL SCALE	DESIGNATION
N/A	1800226
SURVEY BOOK	SHEETS
ELECTRONIC	12 of 47
CONTRACT	PROJECT
R-41474	1800226

jkhayes  
 5/15/2020 5:23:39 pm  
 model:Sheet42  
 file:n:\74927-us 41 intersections\and\h\z\c\h\74927-us 41-mot03.dgn





Notes:  
1. Install all Maintenance of Traffic Signage on this sheet Prior to Phase 1.

M/MATLOCK  
 5/15/2020 5:23:42 pm  
 model:Sheet1  
 file: \\india\02\89\projects\1927-us 41 Intersections\cadd\h2\cads\1927-rd-s-mat05.dgn

Maintenance Of Traffic Legend

	Construction Area
	Standard Drum
	Direction Of Traffic
	Barricade, III-A (12 Lft.)
	Construction Sign, A

Temporary Pavement Marking, Removable, 5 In. Notes:  
 Temporary Pavement Marking, 5 in. (Yellow)

**DRAFT**  
 NOT FOR CONSTRUCTION

RECOMMENDED FOR APPROVAL _____	DESIGN ENGINEER _____	DATE _____
DESIGNED: MKM	DRAWN: JKH	
CHECKED: JLC	CHECKED: MKM	

INDIANA  
 DEPARTMENT OF TRANSPORTATION  
  
 MAINTENANCE OF TRAFFIC  
 PHASE 3 STATE ROAD 58

HORIZONTAL SCALE	BRIDGE FILE
1"=50'	N/A
VERTICAL SCALE	DESIGNATION
N/A	1800226
SURVEY BOOK	SHEETS MOT-07
ELECTRONIC	13 of 47
CONTRACT	PROJECT
R-41474	1800226

Sec. 3, T-6-N, R-9-W  
Haddon Township  
Sullivan County

Sec. 12, T-6-N, R-9-W  
Haddon Township  
Sullivan County

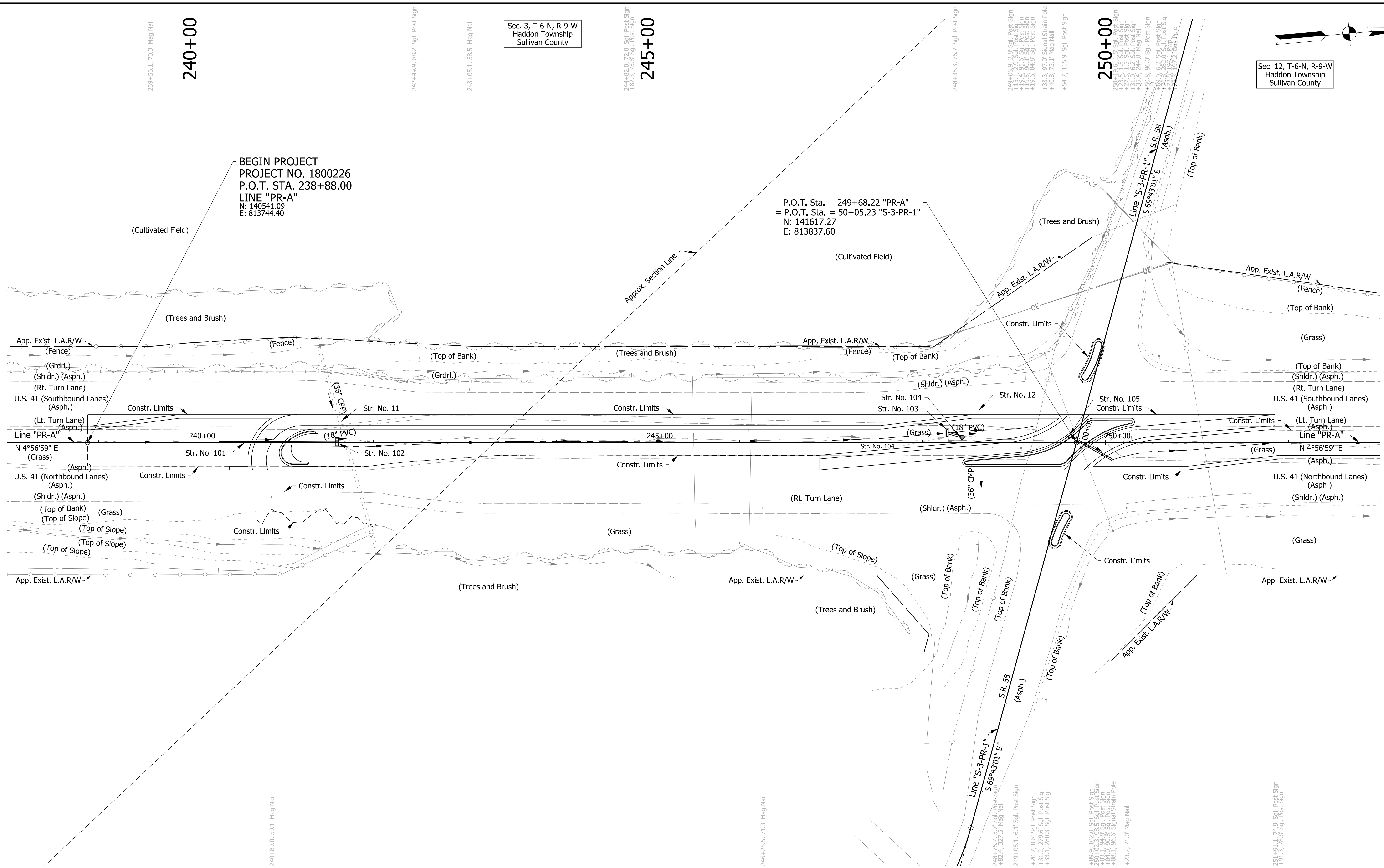
240+00

245+00

250+00

BEGIN PROJECT  
PROJECT NO. 1800226  
P.O.T. STA. 238+88.00  
LINE "PR-A"  
N: 140541.09  
E: 813744.40

P.O.T. Sta. = 249+68.22 "PR-A"  
= P.O.T. Sta. = 50+05.23 "S-3-PR-1"  
N: 141617.27  
E: 813837.60



**DRAFT**  
NOT FOR CONSTRUCTION

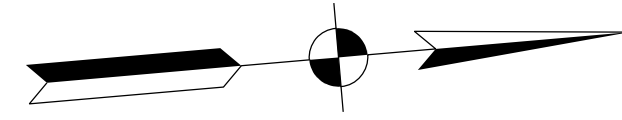
RECOMMENDED FOR APPROVAL	DESIGN ENGINEER	DATE
DESIGNED: MKM	DRAWN: CPH	
CHECKED: JLC	CHECKED: MKM	

INDIANA  
DEPARTMENT OF TRANSPORTATION

ROADWAY PLAN  
LINE "PR-A"

HORIZONTAL SCALE	BRIDGE FILE	
1"=50'	N/A	
VERTICAL SCALE	DESIGNATION	
N/A	1800226	
SURVEY BOOK	SHEETS	PLN-01
ELECTRONIC	16	of 47
CONTRACT	PROJECT	
R-41474	1800226	

MMATLOCK  
5/15/2020 5:23:50 pm  
model:Sheet1  
file: \\indw001\289\projects\14927-us 41 Intersections\cadd\h2\cads\14927-rd-s-ph01.dgn



255+00

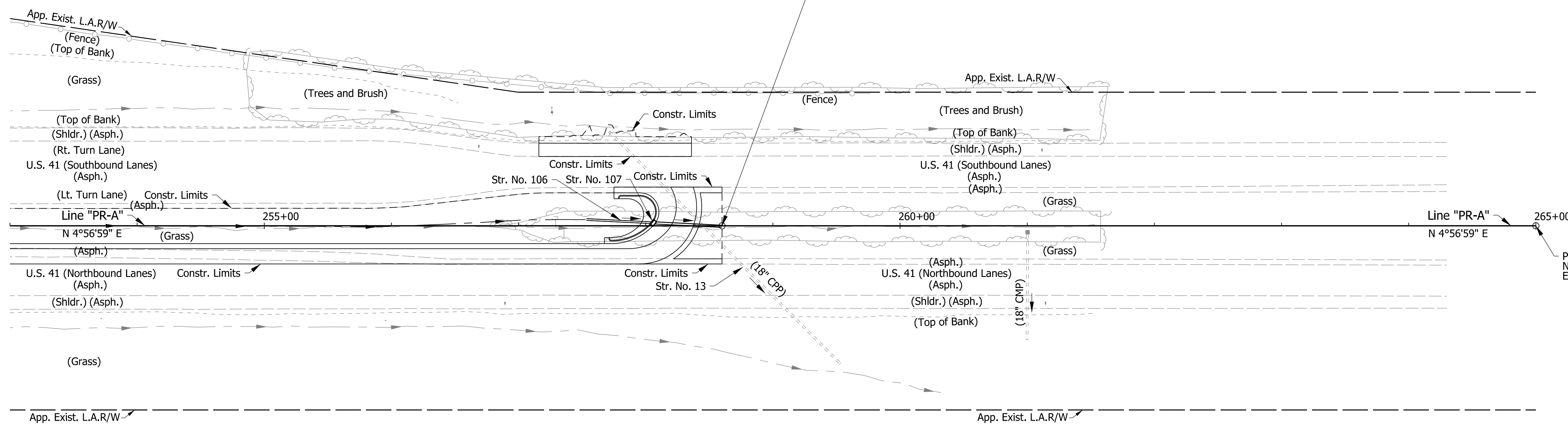
260+00

265+00

Sec. 12, T-6-N, R-9-W  
Haddon Township  
Sullivan County

END PROJECT  
PROJECT NO. 1800226  
P.O.T. STA. 258+60.00  
LINE "PR-A"  
N: 142505.73  
E: 813914.54

P.O.T. Sta. = 265+00.00 "PR-A"  
N: 143143.34  
E: 813969.76



MMAPLOCK  
 5/15/2020 5:23:53 pm  
 model:Sheet42  
 file: \\indw001\289\projects\1927-us 41 Intersections\cadd\h2\cads\1927-rd-s-pln01.dgn

253+71.8, 72.9' Sgl. Post Sign

256+95.5, 74.4' Sgl. Post Sign

256+89.3, 60.3' Mag Nail

261+14.4, 60.2' Mag Nail

**DRAFT**  
NOT FOR CONSTRUCTION

RECOMMENDED FOR APPROVAL _____	DESIGN ENGINEER _____	DATE _____
DESIGNED: _____ MKM _____	DRAWN: _____ CPH _____	
CHECKED: _____ JLC _____	CHECKED: _____ MKM _____	

INDIANA  
DEPARTMENT OF TRANSPORTATION

ROADWAY PLAN  
LINE "PR-A"

HORIZONTAL SCALE	BRIDGE FILE
1"=50'	N/A
VERTICAL SCALE	DESIGNATION
N/A	1800226
SURVEY BOOK	SHEETS
ELECTRONIC	18 of 47
CONTRACT	PROJECT
R-41474	1800226

239

240

241

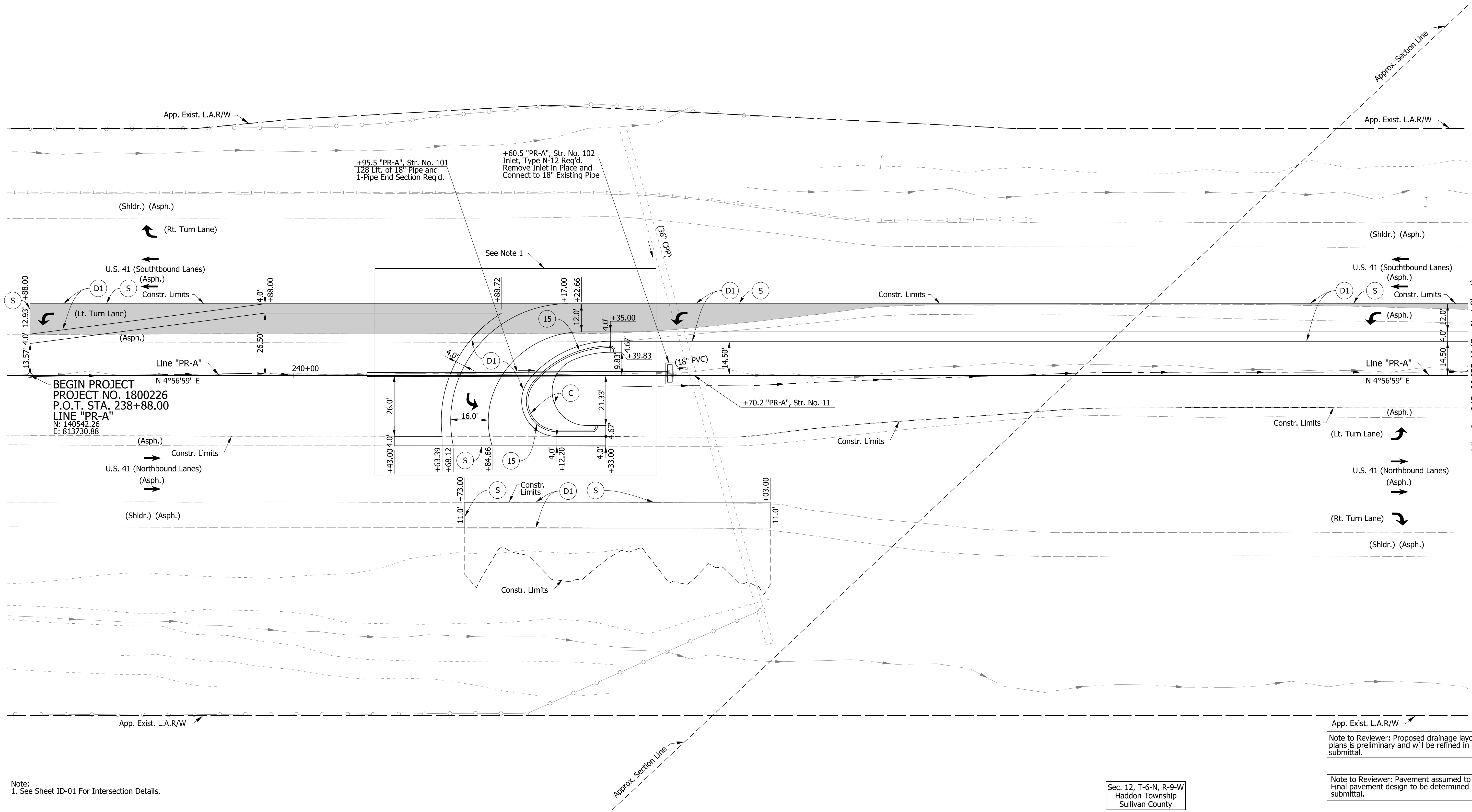
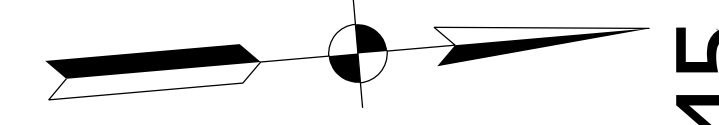
242

243

244

245

Sec. 3, T-6-N, R-9-W  
Haddon Township  
Sullivan County



Matchline Sta. 245+00 "PR-A" (See Next Sheet)

BEGIN PROJECT  
PROJECT NO. 1800226  
P.O.T. STA. 238+88.00  
LINE "PR-A"  
N: 140542.26  
E: 813730.88

Note to Reviewer: Proposed drainage layout shown in plans is preliminary and will be refined in a future submittal.

Note to Reviewer: Pavement assumed to be asphalt. Final pavement design to be determined in a future submittal.

Note:  
1. See Sheet ID-01 For Intersection Details.

Sec. 12, T-6-N, R-9-W  
Haddon Township  
Sullivan County

- (D1) 165#/Svd. OC/QA-HMA, 4, 70, Surface, 9.5 mm on 275#/Svd. OC/QA-HMA, 4, 70, Intermediate, 19.0 mm on 880#/Svd. OC/QA-HMA, 4, 64, Base, 19.0 mm on 300#/Svd. OC/QA-HMA, 4, 76, Intermediate OG, 19.0 mm on 6 in of Compacted Aggregate, No. 53 on Subgrade Treatment Type IC
- (S) Saw Cut (No Direct Pay)

- Legend
- (C) PCCP, 7 In. w/"Type D-1" Construction Joint @ 18 Ft. Spacing (Typ.) on Subbase for PCCP Consisting of:  
3 In. of Compacted Aggregate, No. 8 on 6 In. of Compacted Aggregate, No. 53 on Subgrade Treatment Type IC
  - (22) Center Curb, B, Concrete (See Std. Dwg. E-605-CNCC-02)
  - (15) Curb & Gutter, B, Concrete (Sloping) (See Std. Dwg. E-605-CCCG-01)
  - █ Pavement Removal
  - Traffic Direction Arrow

**DRAFT**  
NOT FOR CONSTRUCTION

RECOMMENDED FOR APPROVAL	DESIGN ENGINEER	DATE
DESIGNED: MKM	DRAWN: CPH	
CHECKED: JLC	CHECKED: MKM	

INDIANA  
DEPARTMENT OF TRANSPORTATION

CONSTRUCTION DETAILS

HORIZONTAL SCALE	BRIDGE FILE	
1"=20'	N/A	
VERTICAL SCALE	DESIGNATION	
N/A	1800226	
SURVEY BOOK	SHEETS	CD-01
ELECTRONIC	20	of 47
CONTRACT	PROJECT	
R-41474	1800226	

MMATLOCK  
5/15/2020 5:23:55 pm  
model:Sheet1  
file: \\india\02\89\projects\1927-us 41 Intersections\Cadd\12\cadd\1927-rd-s-ph02.dgn

245

246

247

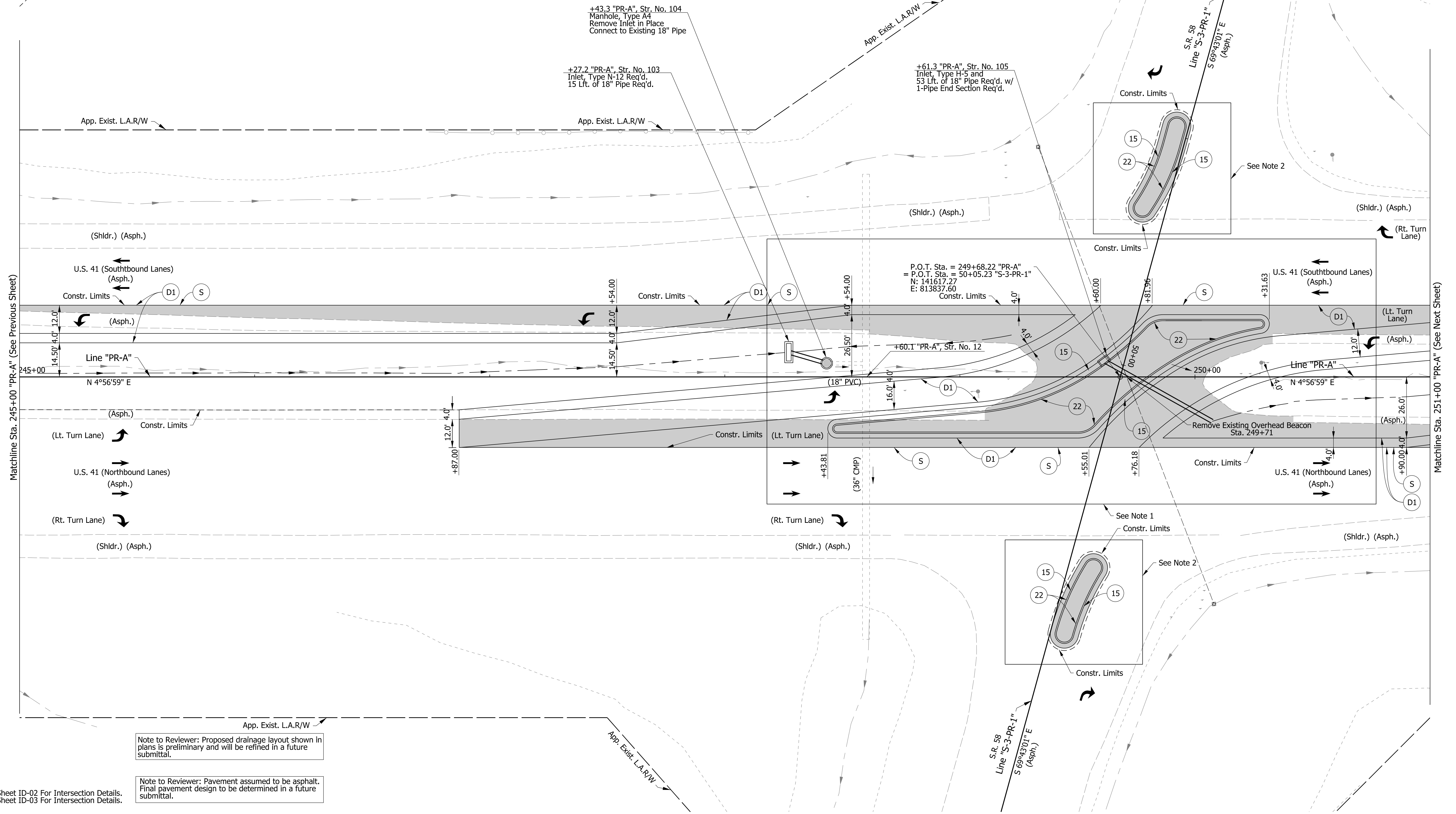
248

249

250

251

Sec. 12, T-6-N, R-9-W  
Haddon Township  
Sullivan County



Note:  
 1. See Sheet ID-02 For Intersection Details.  
 2. See Sheet ID-03 For Intersection Details.

Note to Reviewer: Proposed drainage layout shown in plans is preliminary and will be refined in a future submittal.

Note to Reviewer: Pavement assumed to be asphalt. Final pavement design to be determined in a future submittal.

- Legend**
- (D1) 165#/Svd. OC/QA-HMA, 4, 70, Surface, 9.5 mm on 275#/Svd. OC/QA-HMA, 4, 70, Intermediate, 19.0 mm on 880#/Svd. OC/QA-HMA, 4, 64, Base, 19.0 mm on 300#/Svd. OC/QA-HMA, 4, 76, Intermediate OG, 19.0 mm on 6 in of Compacted Aggregate, No. 53 on Subgrade Treatment Type IC
  - (S) Saw Cut (No Direct Pay)
  - (C) PCCP, 7 In. w/"Type D-1" Construction Joint @ 18 Ft. Spacing (Typ.) on Subbase for PCCP Consisting of: 3 In. of Compacted Aggregate, No. 8 on 6 In. of Compacted Aggregate, No. 53 on Subgrade Treatment Type IC
  - (22) Center Curb, B, Concrete (See Std. Dwg. E-605-CNCC-02)
  - █ Pavement Removal
  - (15) Curb & Gutter, B, Concrete (Sloping) (See Std. Dwg. E-605-CCCG-01)
  - Traffic Direction Arrow

**DRAFT**  
NOT FOR CONSTRUCTION

RECOMMENDED FOR APPROVAL	DESIGN ENGINEER	DATE
DESIGNED: MKM	DRAWN: CPH	
CHECKED: JLC	CHECKED: MKM	

**INDIANA DEPARTMENT OF TRANSPORTATION**

**CONSTRUCTION DETAILS**

HORIZONTAL SCALE	BRIDGE FILE
1"=20'	N/A
VERTICAL SCALE	DESIGNATION
N/A	1800226
SURVEY BOOK	SHEETS
ELECTRONIC	21 of 47
CONTRACT	PROJECT
R-41474	1800226

M/MATLOCK  
 5/15/2020 5:23:56 pm  
 model: Sheet2  
 file: \\india\02\89\projects\1927-us 41 Intersections\Cadd\1\2\cads\1927-rd-s-ph02.dgn

251

252

253

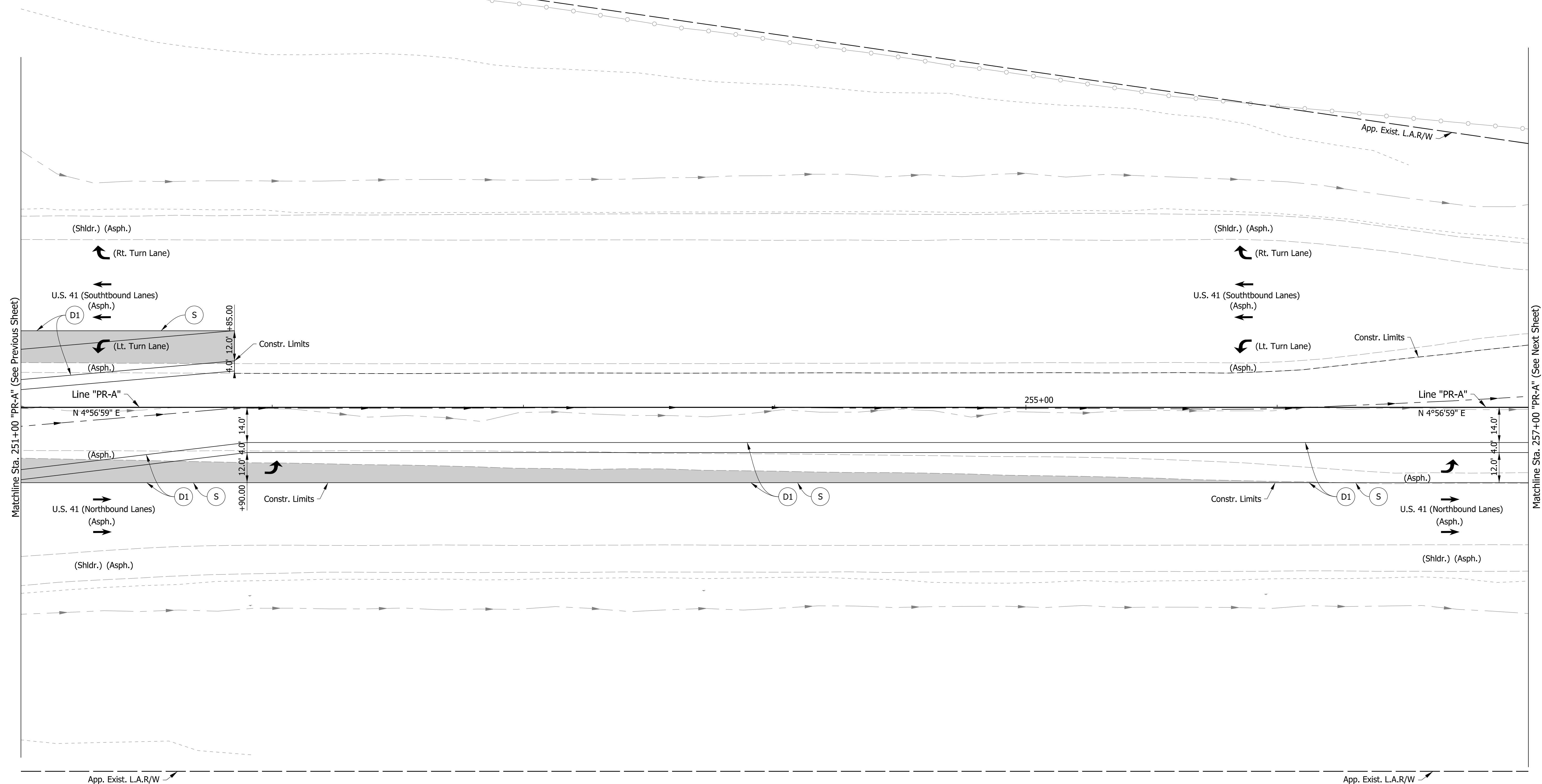
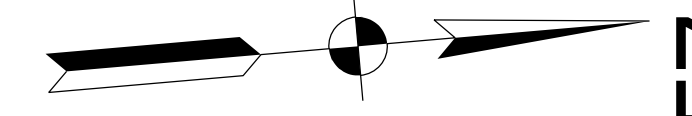
254

255

256

257

Sec. 12, T-6-N, R-9-W  
Haddon Township  
Sullivan County



Matchline Sta. 251+00 "PR-A" (See Previous Sheet)

Matchline Sta. 257+00 "PR-A" (See Next Sheet)

Note:  
 1. Topo Notes for this Sheet are described from Line "PR-A" unless otherwise noted.  
 2. See Sheet ID-01 For Intersection Details.

Note to Reviewer: Proposed drainage layout shown in plans is preliminary and will be refined in a future submittal.

Note to Reviewer: Pavement assumed to be asphalt. Final pavement design to be determined in a future submittal.

- Legend**
- (D1) 165#/Svd. OC/QA-HMA, 4, 70, Surface, 9.5 mm on 275#/Svd. OC/QA-HMA, 4, 70, Intermediate, 19.0 mm on 880#/Svd. OC/QA-HMA, 4, 64, Base, 19.0 mm on 300#/Svd. OC/QA-HMA, 4, 76, Intermediate OG, 19.0 mm on 6 in of Compacted Aggregate, No. 53 on Subgrade Treatment Type IC
  - (S) Saw Cut (No Direct Pay)
  - (C) PCCP, 7 In. w/"Type D-1" Construction Joint @ 18 Ft. Spacing (Typ.) on Subbase for PCCP Consisting of:  
3 In. of Compacted Aggregate, No. 8 on 6 In. of Compacted Aggregate, No. 53 on Subgrade Treatment Type IC
  - (22) Center Curb, B, Concrete (See Std. Dwg. E-605-CNCC-02)
  - █ Pavement Removal
  - (15) Curb & Gutter, B, Concrete (Sloping) (See Std. Dwg. E-605-CCCG-01)
  - Traffic Direction Arrow

**DRAFT**  
NOT FOR CONSTRUCTION

RECOMMENDED FOR APPROVAL _____	DESIGN ENGINEER _____	DATE _____
DESIGNED: MKM	DRAWN: CPH	
CHECKED: JLC	CHECKED: MKM	

**INDIANA  
DEPARTMENT OF TRANSPORTATION**

**CONSTRUCTION DETAILS**

HORIZONTAL SCALE	BRIDGE FILE	
1"=20'	N/A	
VERTICAL SCALE	DESIGNATION	
N/A	1800226	
SURVEY BOOK	SHEETS	CD-03
ELECTRONIC	22	of 47
CONTRACT	PROJECT	
R-41474	1800226	

MMAPLOCK  
 5/15/2020 5:23:57 pm  
 model:Sheet3  
 file: \\india\02\89\projects\1927-us 41 Intersections\cadd\h\2\cas\1927-rd-s-ph02.dgn

257

258

259

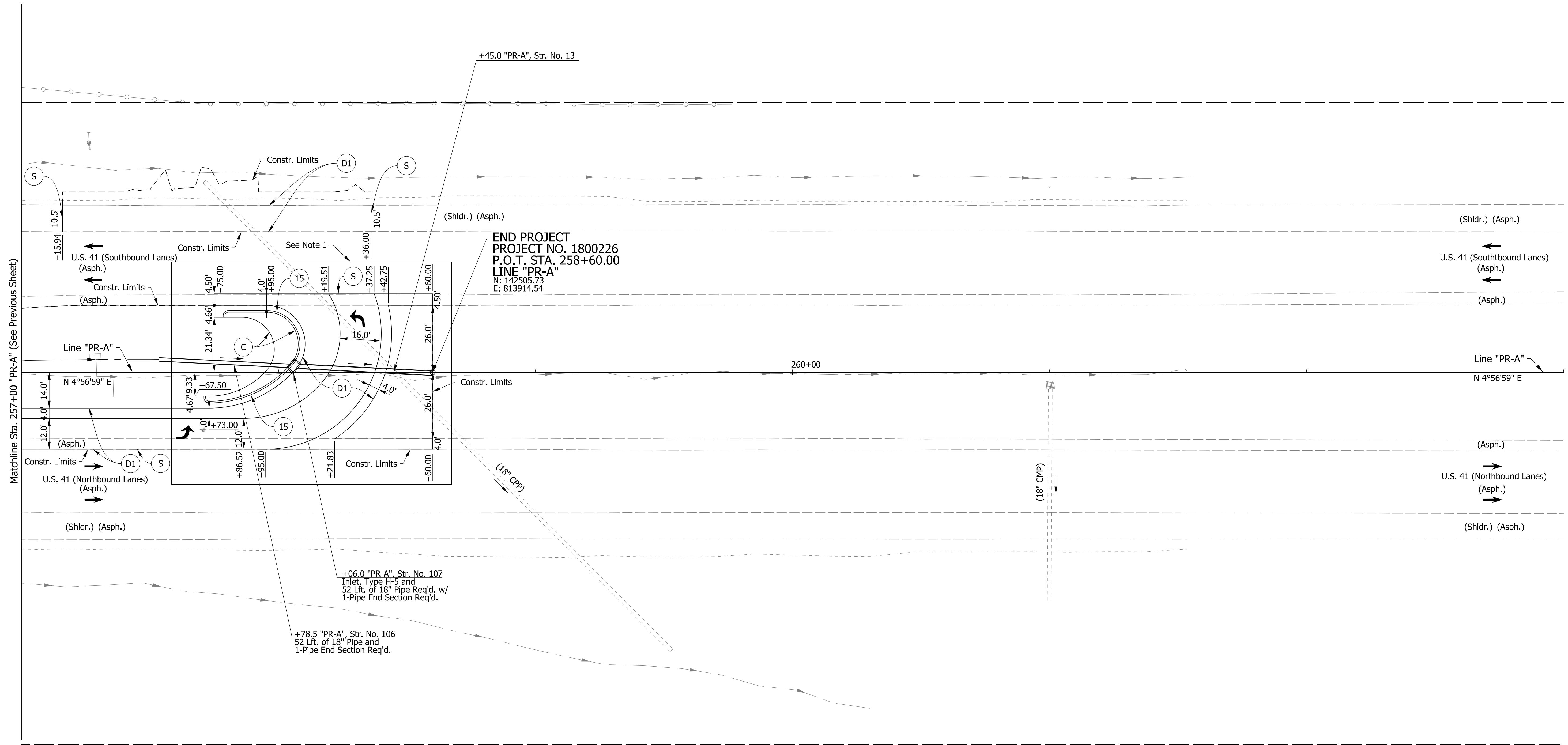
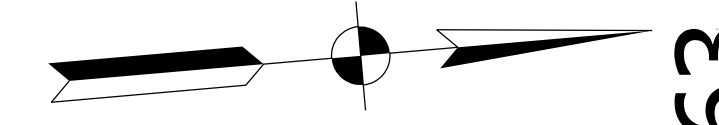
Sec. 12, T-6-N, R-9-W  
Haddon Township  
Sullivan County

260

261

262

263



END PROJECT  
PROJECT NO. 1800226  
P.O.T. STA. 258+60.00  
LINE "PR-A"  
N: 142505.73  
E: 813914.54

Note to Reviewer: Proposed drainage layout shown in plans is preliminary and will be refined in a future submittal.

Note to Reviewer: Pavement assumed to be asphalt. Final pavement design to be determined in a future submittal.

Note:  
1. See Sheet ID-01 For Intersection Details.

- Legend**
- (D1) 165#/Svd. OC/QA-HMA, 4, 70, Surface, 9.5 mm on 275#/Svd. OC/QA-HMA, 4, 70, Intermediate, 19.0 mm on 880#/Svd. OC/QA-HMA, 4, 64, Base, 19.0 mm on 300#/Svd. OC/QA-HMA, 4, 76, Intermediate OG, 19.0 mm on 6 in of Compacted Aggregate, No. 53 on Subgrade Treatment Type IC
  - (S) Saw Cut (No Direct Pay)
  - (C) PCCP, 7 in. w/ "Type D-1" Construction Joint @ 18 Ft. Spacing (Typ.) on Subbase for PCCP Consisting of: 3 in. of Compacted Aggregate, No. 8 on 6 in. of Compacted Aggregate, No. 53 on Subgrade Treatment Type IC
  - (22) Center Curb, B, Concrete (See Std. Dwg. E-605-CNCC-02)
  - Pavement Removal
  - Traffic Direction Arrow

**DRAFT**  
NOT FOR CONSTRUCTION

RECOMMENDED FOR APPROVAL	DESIGN ENGINEER	DATE
DESIGNED: MKM	DRAWN: CPH	
CHECKED: JLC	CHECKED: MKM	

INDIANA  
DEPARTMENT OF TRANSPORTATION

CONSTRUCTION DETAILS

HORIZONTAL SCALE	BRIDGE FILE
1"=20'	N/A
VERTICAL SCALE	DESIGNATION
N/A	1800226
SURVEY BOOK	SHEETS CD-04
ELECTRONIC	23 of 47
CONTRACT	PROJECT
R-41474	1800226

MMATLOCK  
 5/15/2020 5:23:58 pm  
 model: Sheet4  
 file: \\india\02\89\projects\1927-us 41 Intersections\cadd\h\2\cadd\1927-rd-s-ph02.dgn