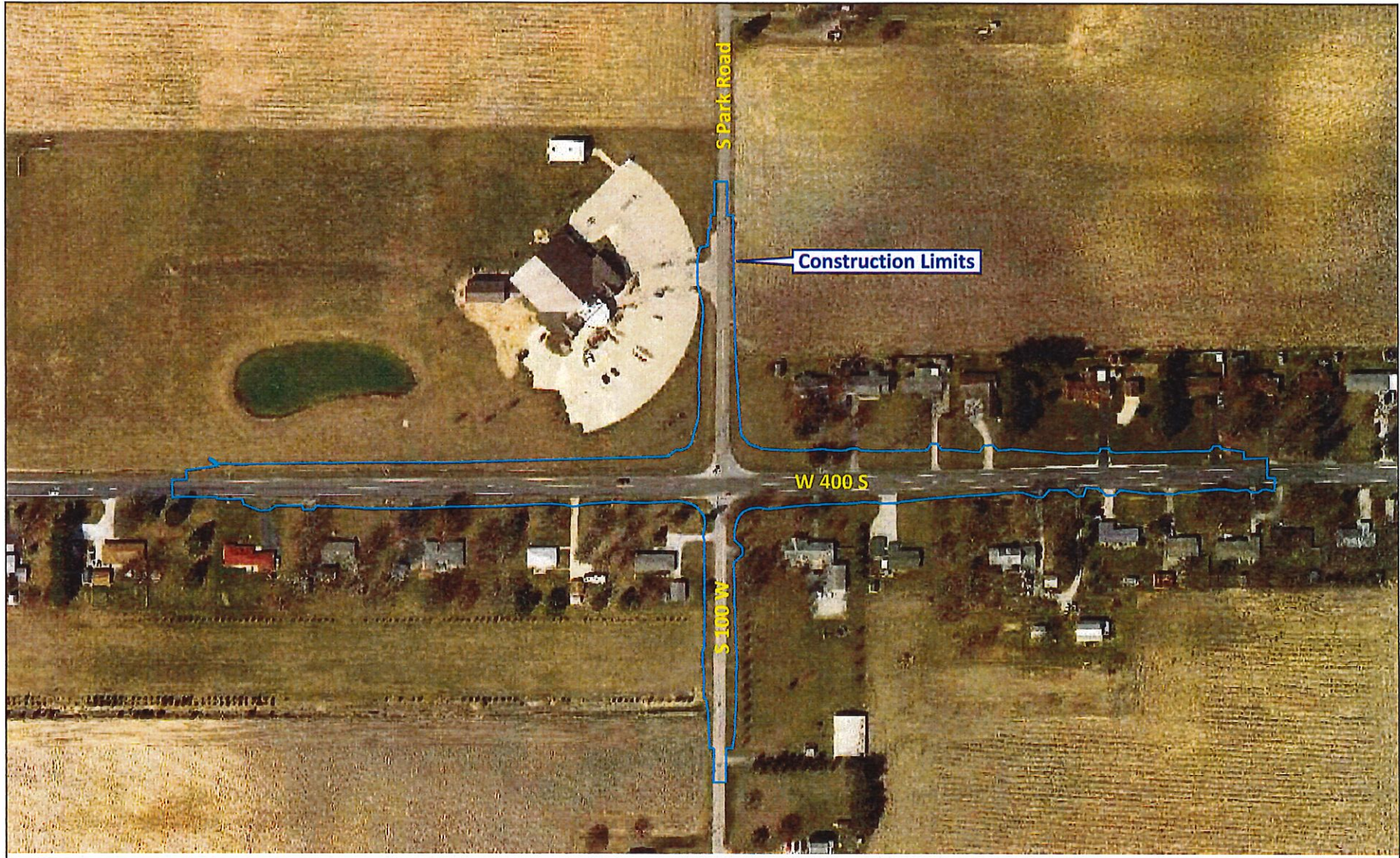


Source: <http://maps.indiana.edu/>

Location Map  
 Intersection Improvement  
 SR 26 at Park Road (100 West),  
 0.98 Mile West of SR 931  
 Harrison Township, Howard County, Indiana  
 Metric Project No. 18-0080-T5

Note: All locations are approximate





Source: <https://beacon.schneidercorp.com/Application.aspx?AppID=94&LayerID=952&PageTypeID=1&PageID=937>

2018 Aerial Photograph  
Intersection Improvement with Turn Lanes  
SR 26 and Park Road (CR 100 W)  
Harrison Township, Howard County, Indiana  
Des. No. 1600623

Note: All locations are approximate

