

P:\2016\16-0027 - Shrewberry on-call Vincennes District\Exhibits\Task 24\Exhibits\CE\Location Map.aprx

Source: <http://maps.indiana.edu/>

Location Map
 SR 60 and Salem Bypass Roundabout
 Washington Township, Washington County, IN
 Des. No. 1702225
 Metric Project No. 16-0024-24

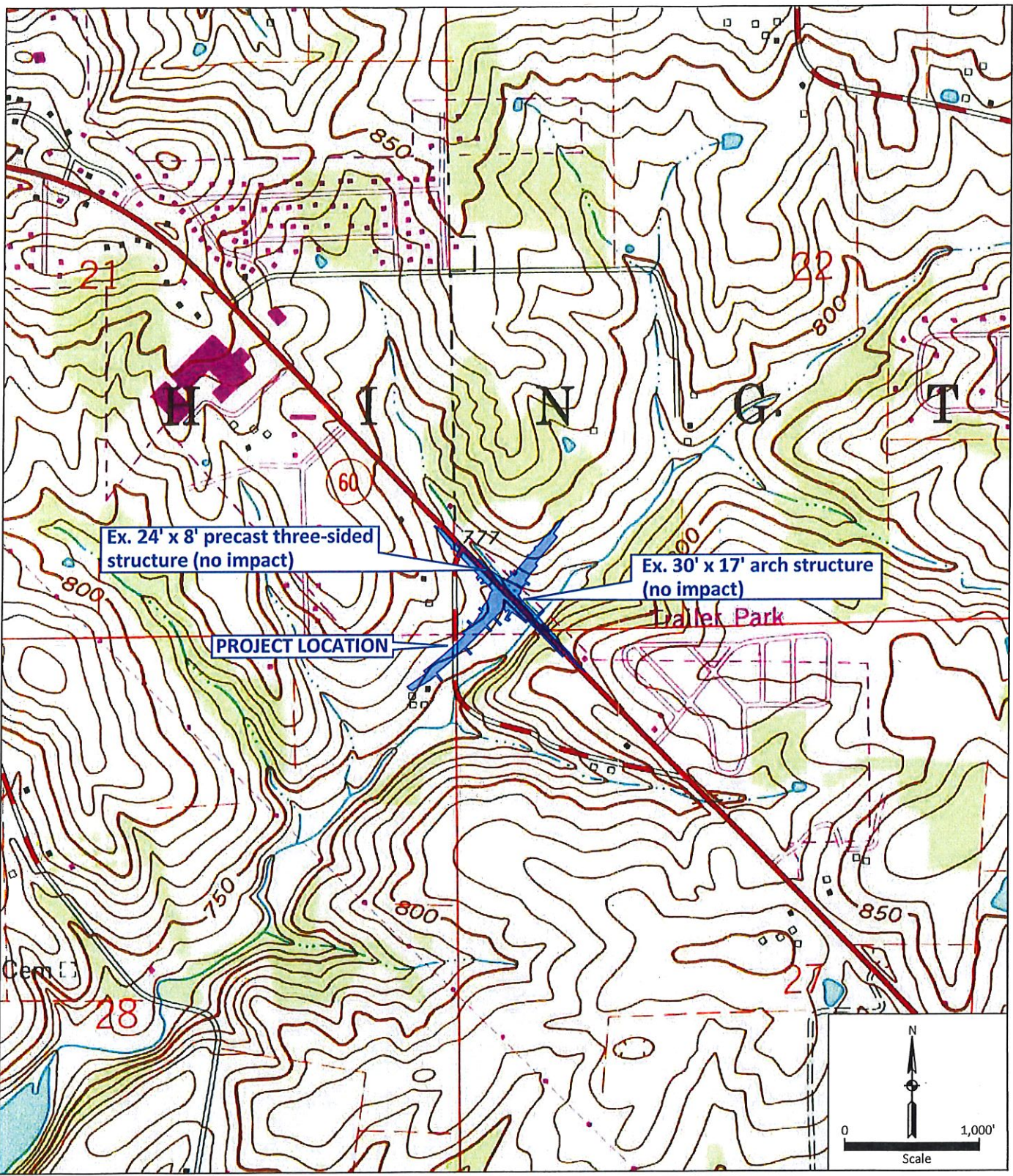
All locations approximate

N

 Not to Scale



P:\2016\16-0027 - Shrewsbury on-call Vincennes District\Exhibits\Task 24\Exhibits\CETopo Map.dwg



Source: <https://geonames.usgs.gov/apex/f?p=262:1:0>

USGS Topographic Map
 SR 60 and Salem Bypass Roundabout
 Washington Township, Washington County, IN
 Des. No. 1702225
 Metric Project No. 16-0027-24

Note: All locations are approximate
 Base map:
 Salem, IN 1963
 Photorevised 1989
 Minor Revisions 1994
 7.5 Minute Quadrangle



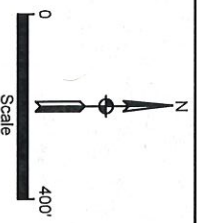


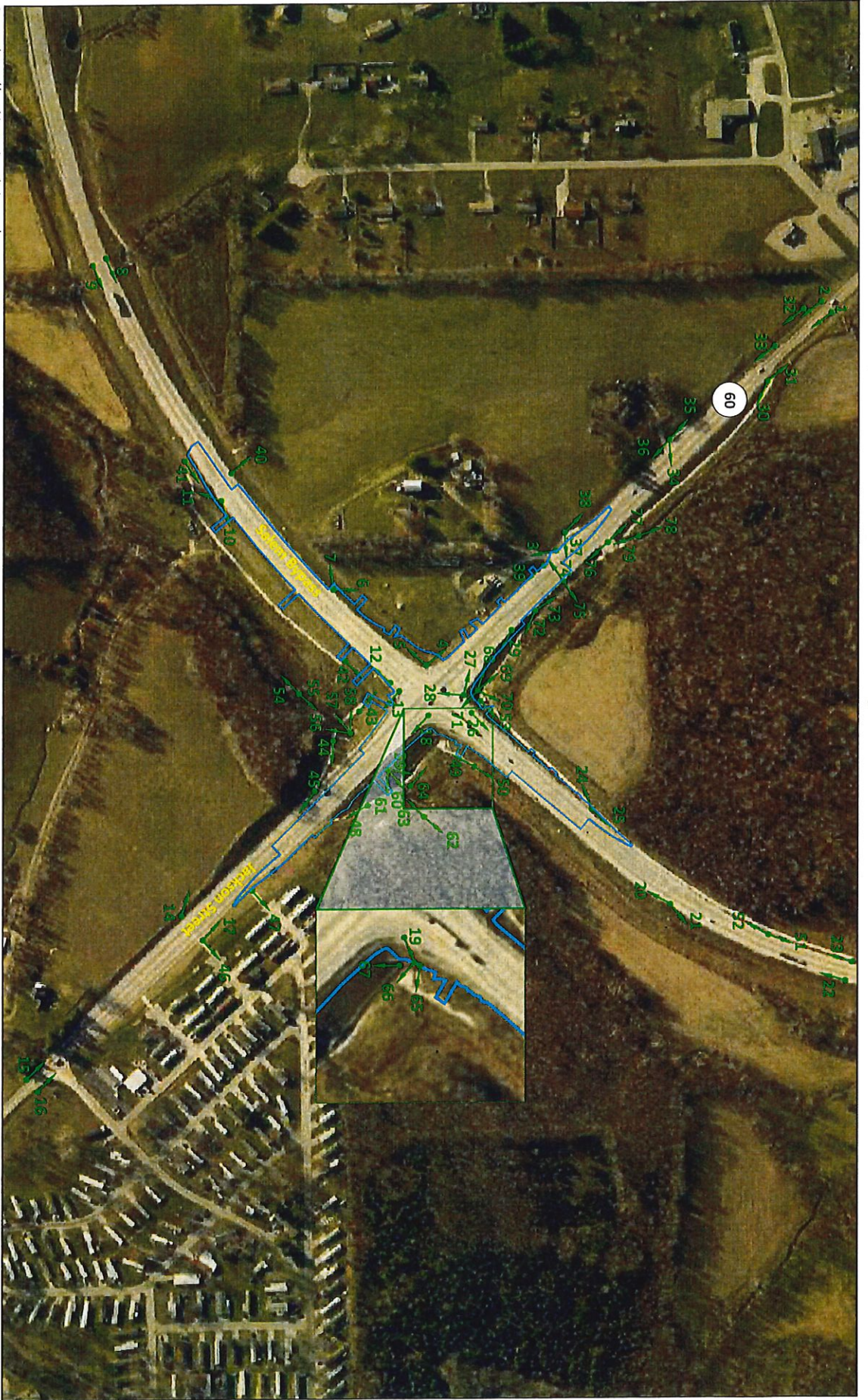
Source: <https://washington.in.wrtgls.com/>

2015 Aerial Photograph
 SR 60 and Salem Bypass Roundabout
 Washington Township, Washington County, IN
 Des. No. 1702225
 Metric Project No. 16-0027-24

Note: All locations are approximate

— Construction Limits

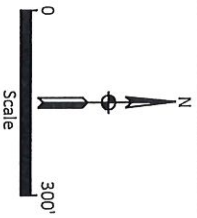


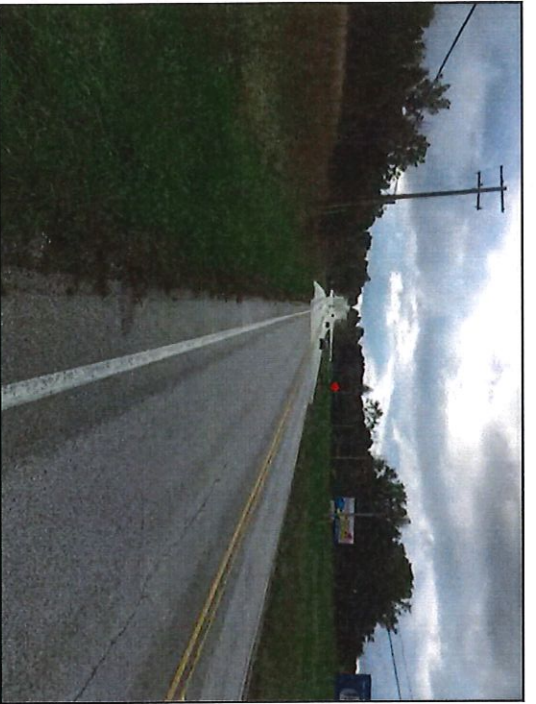


Source: <https://washington.wtngis.com/>

Photograph Location Map
SR 60 and Salem Bypass Roundabout
Washington Township, Washington County, IN
Des. No. 1702225
Metric Project No. 16-0027-24

Note: All locations are approximate





1. View of S.R. 60 and roadside ditch (RSD) 1 from northwestern project study limits (PSL), looking southeast.



2. View of S.R. 60 and RSD 2 from northwestern PSL, looking southeast.



3. View of S.R. 60 right-of-way (ROW) and RSD 4, looking south-east.



4. View of S.R. 60, Wetland A, and RSD 4 from intersection of S.R. 60 and Salem Bypass, looking northwest.

SITE PHOTOGRAPHS—9/26/2018

S.R. 60 and Salem Bypass Roundabout
Roundabout Intersection Improvement
Washington Township, Washington County, Indiana
Des. No. 1702225
Metric Project No. 16-0027-24



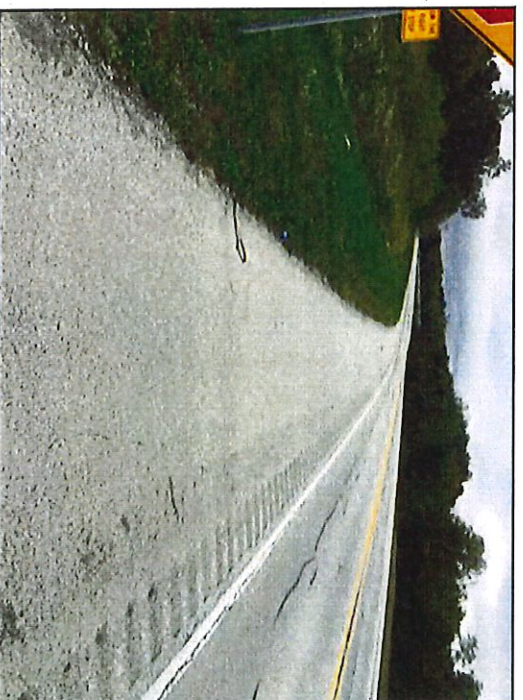
5. View of S.R. 60, Wetland A, and RSD 4 from intersection of S.R. 60 and Salem Bypass, looking southwest.



6. View of Salem Bypass ROW and RSD 4, looking northeast.



7. View of Salem Bypass ROW and RSD 4, looking southwest.



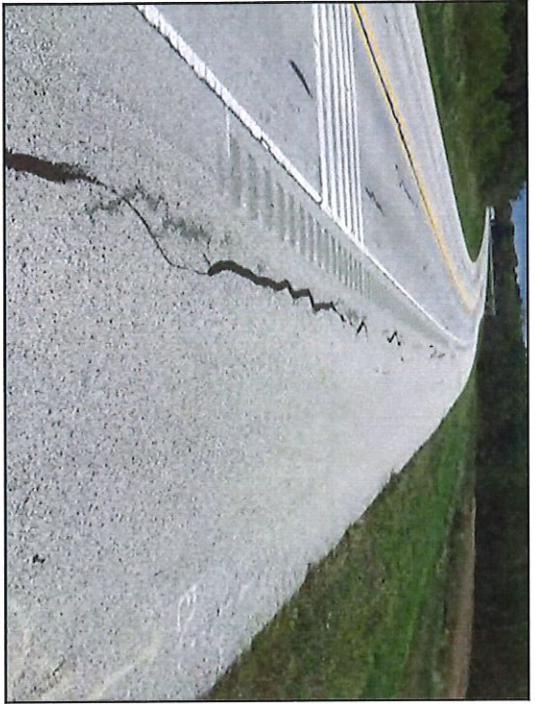
8. View of Salem Bypass from southwestern PSL, looking north-east.

SITE PHOTOGRAPHS—9/26/2018

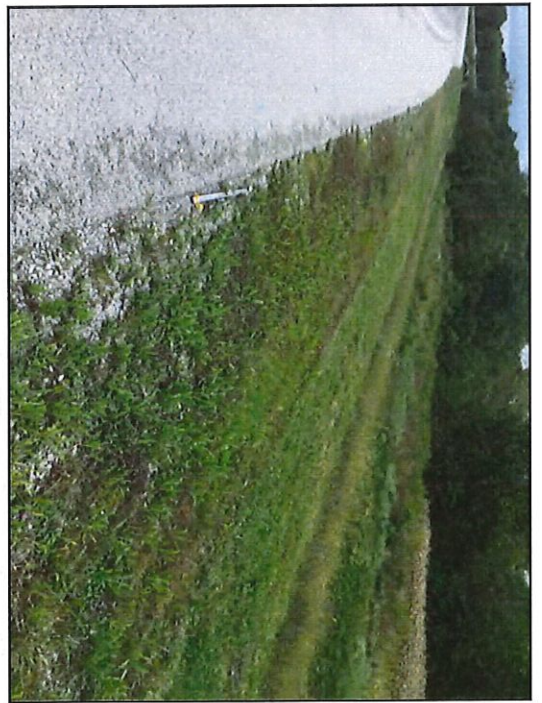
S.R. 60 and Salem Bypass Roundabout
Roundabout Intersection Improvement

Washington Township, Washington County, Indiana
Des. No. 1702225

Metric Project No. 16-0027-24



9. View of Salem Bypass from southwestern PSL, looking north-east.



10. View of Salem Bypass ROW and RSD 5, looking northeast.



11. View of Salem Bypass ROW and RSD 5, looking southwest.



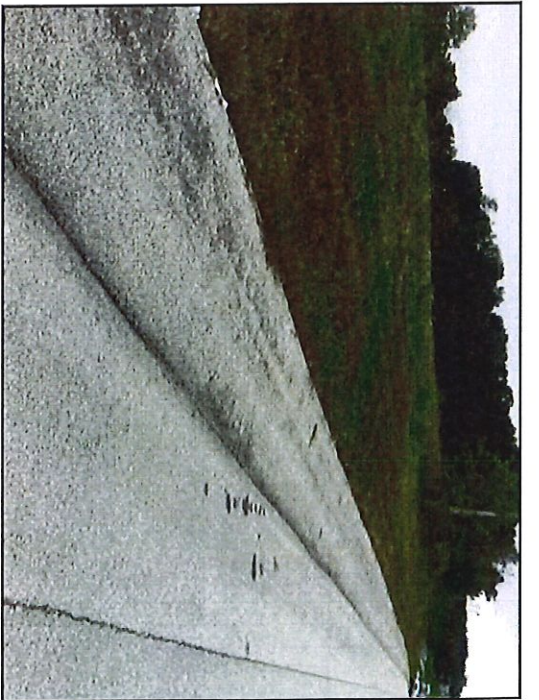
12. View of Salem Bypass from intersection of S.R. 60 and Salem Bypass, looking southwest.

SITE PHOTOGRAPHS—9/26/2018

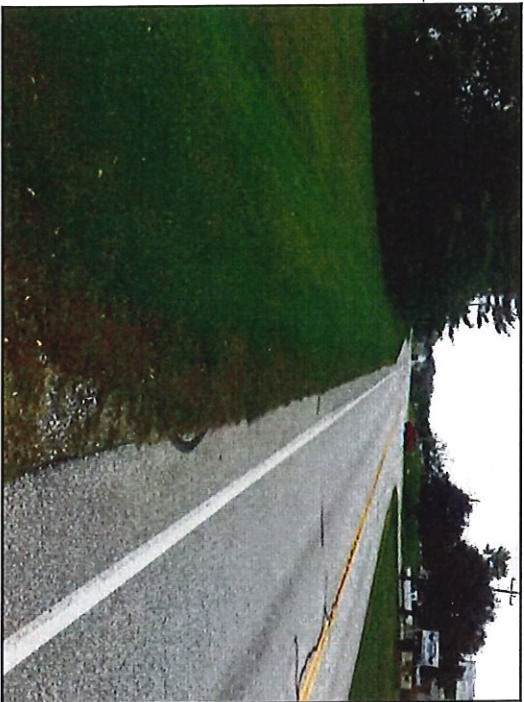
S.R. 60 and Salem Bypass Roundabout
Roundabout Intersection Improvement
Washington Township, Washington County, Indiana
Des. No. 1702225



13. View of S.R. 60 and RSD 6 from intersection of S.R. 60 and Salem Bypass, looking southeast.



14. View of S.R. 60 ROW and RSD 6, looking northwest.



15. View of S.R. 60 from southeastern PSL, looking northwest.



16. View of S.R. 60 from southeastern PSL, looking northwest.

SITE PHOTOGRAPHS—9/26/2018

S.R. 60 and Salem Bypass Roundabout
Roundabout Intersection Improvement
Washington Township, Washington County, Indiana
Des. No. 1702225



17. View of S.R. 60 ROW and RSD 7, looking northwest.



18. View of S.R. 60 from intersection of S.R. 60 and Salem Bypass, looking southeast.



19. View of Salem Bypass and RSD 8, looking northeast.



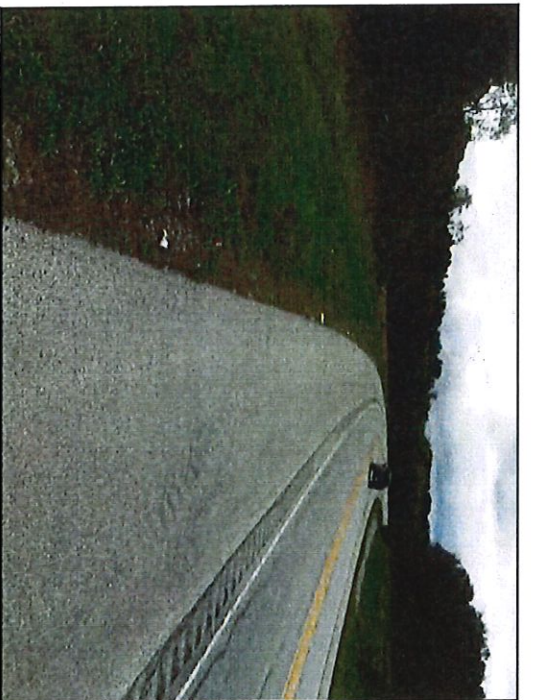
20. View of Salem Bypass ROW and RSD 8, looking southwest.

SITE PHOTOGRAPHS—9/26/2018

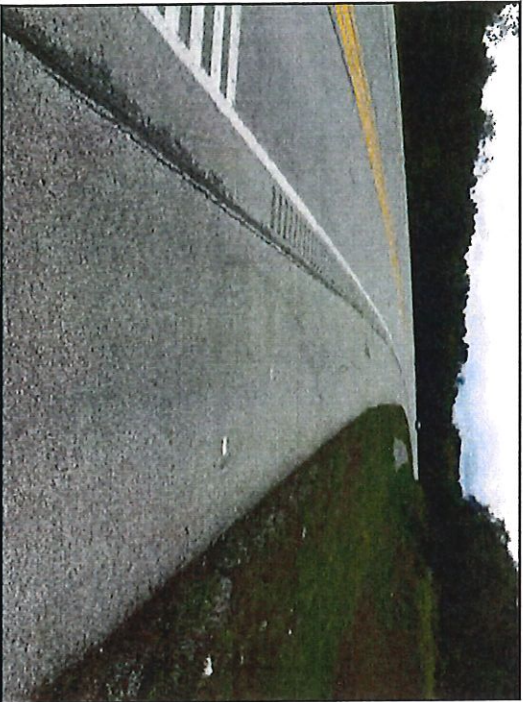
S.R. 60 and Salem Bypass Roundabout
Roundabout Intersection Improvement
Washington Township, Washington County, Indiana
Des. No. 1702225



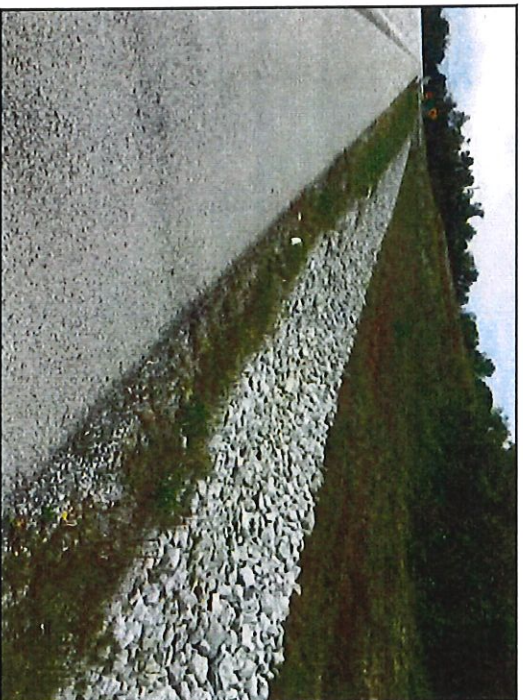
21. View of Salem Bypass ROW and RSD 8, looking northeast.



22. View of Salem Bypass from northeastern PSL, looking southwest.



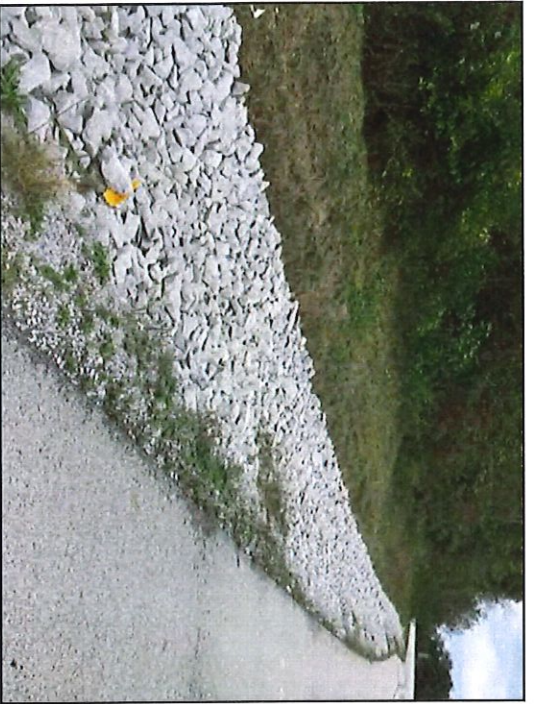
23. View to Salem Bypass from northeastern PSL, looking southwest.



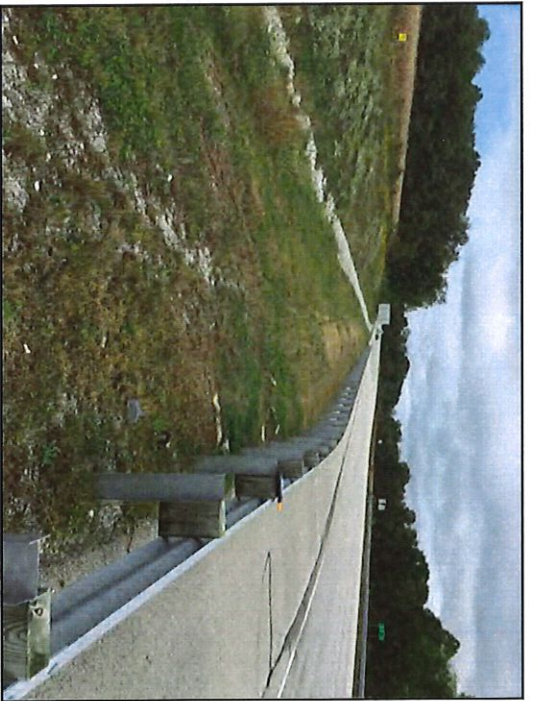
24. View of Salem Bypass ROW and RSD 9, looking southwest.

SITE PHOTOGRAPHS—9/26/2018

S.R. 60 and Salem Bypass Roundabout
Roundabout Intersection Improvement
Washington Township, Washington County, Indiana
Des. No. 1702225



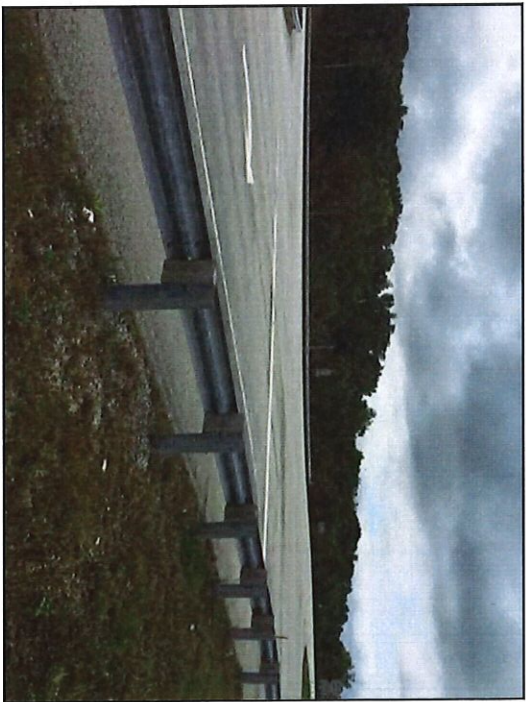
25. View of Salem Bypass ROW and RSD 9, looking northeast.



26. View of Salem Bypass and RSD 9 from intersection of S.R. 60 and Salem Bypass, looking northeast.



27. View of S.R. 60 from intersection of S.R. 60 and Salem Bypass, looking northwest.



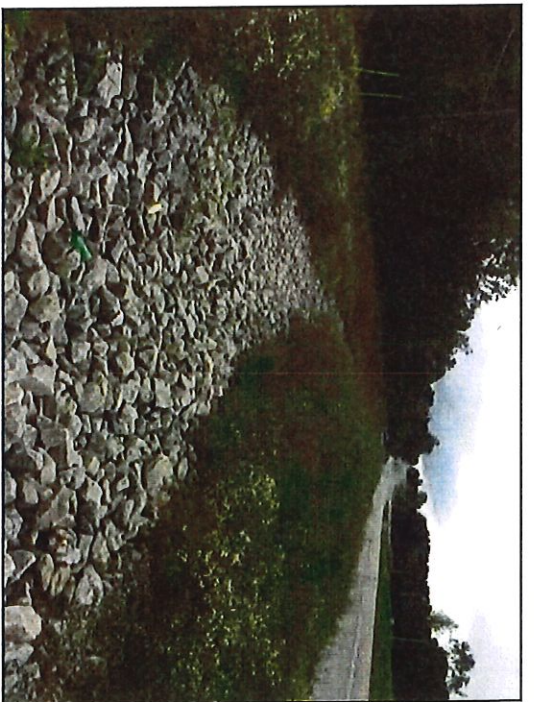
28. View of intersection of S.R. 60 and Salem Bypass, looking south.

SITE PHOTOGRAPHS—9/26/2018

S.R. 60 and Salem Bypass Roundabout
Roundabout Intersection Improvement
Washington Township, Washington County, Indiana
Des. No. 1702225



29. View of S.R. 60 ROW, looking southeast.



30. View of riprap in RSD 1, looking southeast.



31. View of vegetated swale in RSD 1, looking northwest.



32. View of concrete ditch in RSD 2, looking southeast.

SITE PHOTOGRAPHS—9/26/2018

S.R. 60 and Salem Bypass Roundabout
Roundabout Intersection Improvement
Washington Township, Washington County, Indiana
Des. No. 1702225



33. View of vegetated swale in RSD 2, looking southeast.



34. View of culvert, approximately 24 inches in diameter, looking east.



35. View of transition from vegetated swale to riprap in RSD 2 from culvert, approximately 24 inches in diameter, looking northwest.



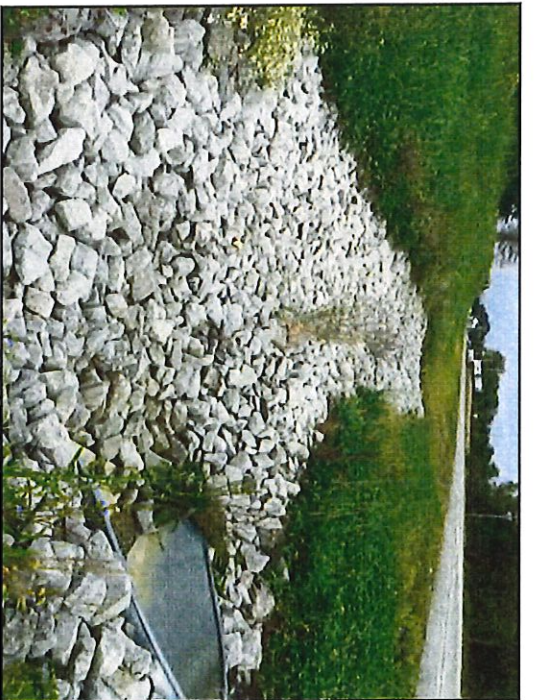
36. View of vegetated swale in RSD 3, looking southeast.

SITE PHOTOGRAPHS—9/26/2018

S.R. 60 and Salem Bypass Roundabout
Roundabout Intersection Improvement
Washington Township, Washington County, Indiana
Des. No. 1702225



37. View of culvert, approximately 30 inches in diameter, looking east.



38. View of riprap in RSD 3 and culvert, approximately 30 inches in diameter, looking northwest.



39. View of RSD 4, looking southeast.



40. View of riprap drainage feature from RSD 4, looking north-west.

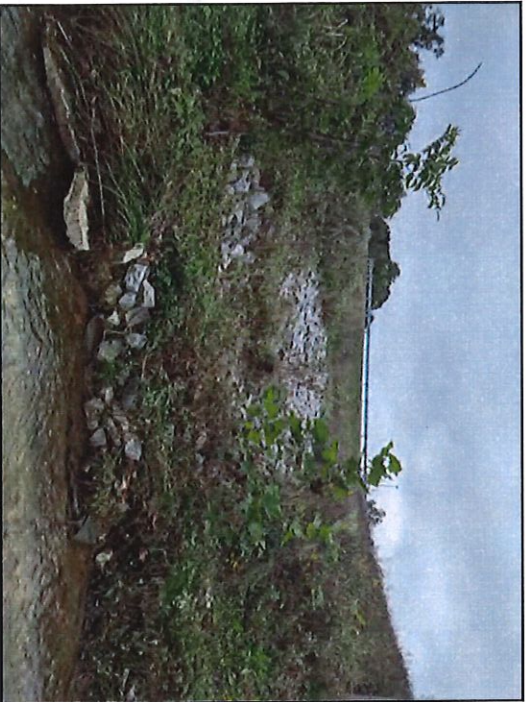
SITE PHOTOGRAPHS—9/26/2018
S.R. 60 and Salem Bypass Roundabout
Roundabout Intersection Improvement
Washington Township, Washington County, Indiana
Des. No. 1702225



41. View of riprap in RSD 5, looking northeast.



42. View of transition of riprap to vegetated swale in RSD 5, looking northeast.



43. View of RSD 5 from UNT to Lake Salinda (UNT 1), looking northwest.



44. View of RSD 6 from UNT 1, looking east.

SITE PHOTOGRAPHS—9/26/2018

S.R. 60 and Salem Bypass Roundabout
Roundabout Intersection Improvement
Washington Township, Washington County, Indiana
Des. No. 1702225



45. View of concrete ditch in RSD 6, looking southeast.



46. View of riprap drainage feature, looking northeast.



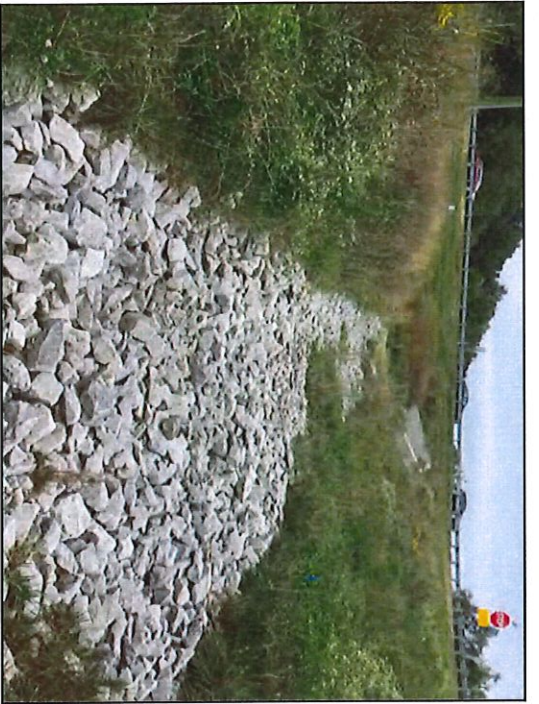
47. View of riprap drainage feature, looking northeast.



48. View of riprap in RSD 7 from UNT 1, looking southeast.

SITE PHOTOGRAPHS—9/26/2018

S.R. 60 and Salem Bypass Roundabout
Roundabout Intersection Improvement
Washington Township, Washington County, Indiana
Des. No. 1702225



49. View of riprap in RSD 8, looking southwest.



50. View of vegetated swale in RSD 8, looking northeast.



51. View of vegetated swale in RSD 9, looking northeast.

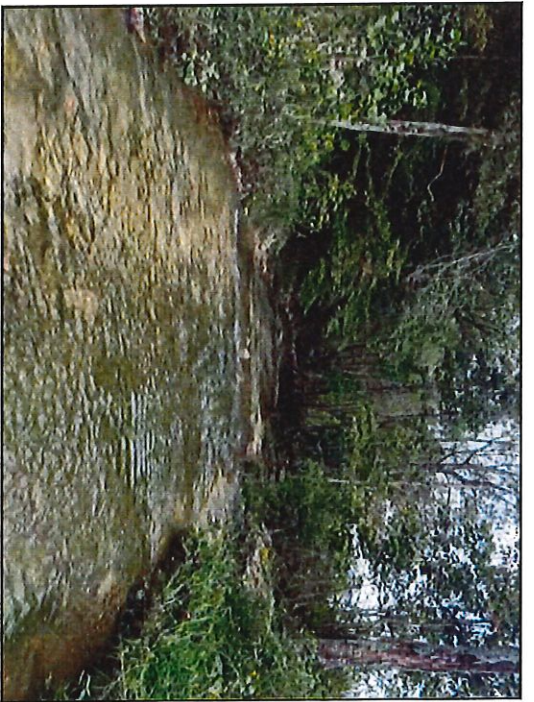


52. View of riprap in RSD 9, looking southwest.

SITE PHOTOGRAPHS—9/26/2018
S.R. 60 and Salem Bypass Roundabout
Roundabout Intersection Improvement
Washington Township, Washington County, Indiana
Des. No. 1702225



53. View of RSD 9 from UNT 2, looking northeast.



54. View of UNT 1 from PSL, looking southwest (downstream).



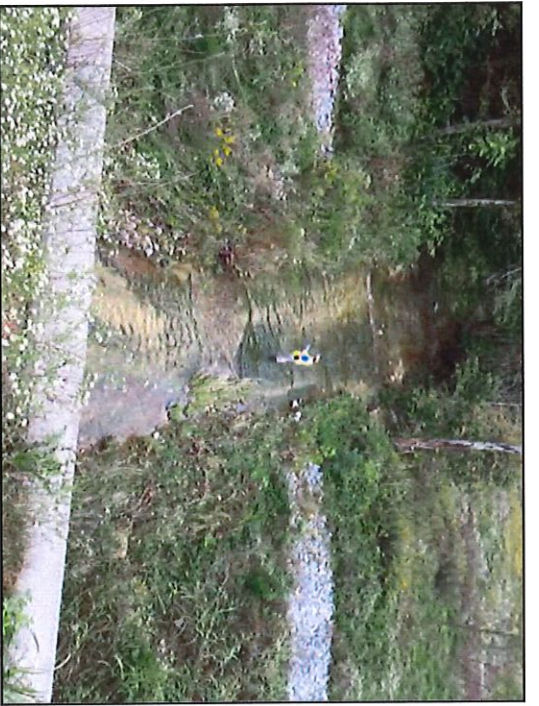
55. View of UNT 1 from PSL, looking northeast (upstream).



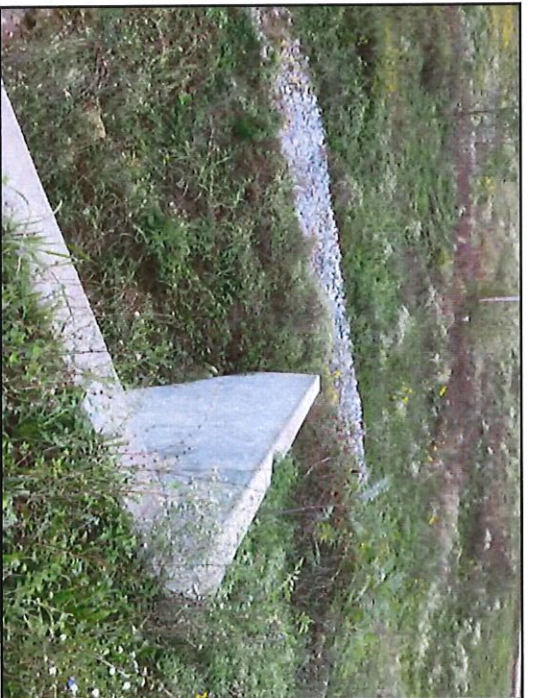
56. View of southeastern bank of UNT 1 and RSD 6, looking south.

SITE PHOTOGRAPHS—9/26/2018

S.R. 60 and Salem Bypass Roundabout
Roundabout Intersection Improvement
Washington Township, Washington County, Indiana
Des. No. 1702225



57. View of UNT 1, looking southwest (downstream).



58. View of northwestern bank of UNT 1 and RSD 5, looking southwest.



59. View of northwestern bank of UNT 1 and confluence of UNT 1 and UNT 2, looking north.



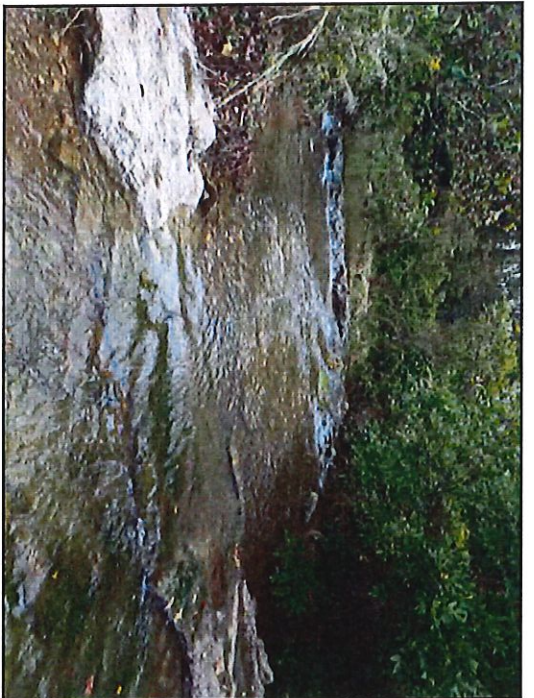
60. View of UNT 1 and confluence of UNT 1 and UNT 2, looking northeast (upstream).

SITE PHOTOGRAPHS—9/26/2018

S.R. 60 and Salem Bypass Roundabout
Roundabout Intersection Improvement
Washington Township, Washington County, Indiana
Des. No. 1702225



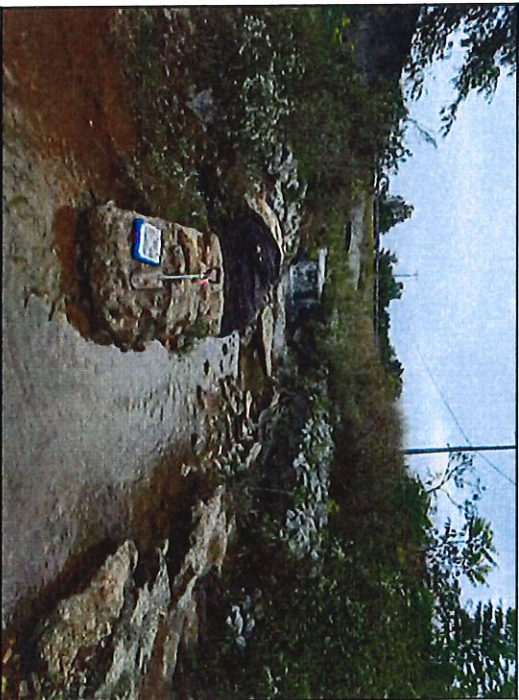
61. View of southeastern bank of UNT 1 and RSD 7, looking northeast.



62. View of UNT 1 from PSL, looking northeast (upstream).



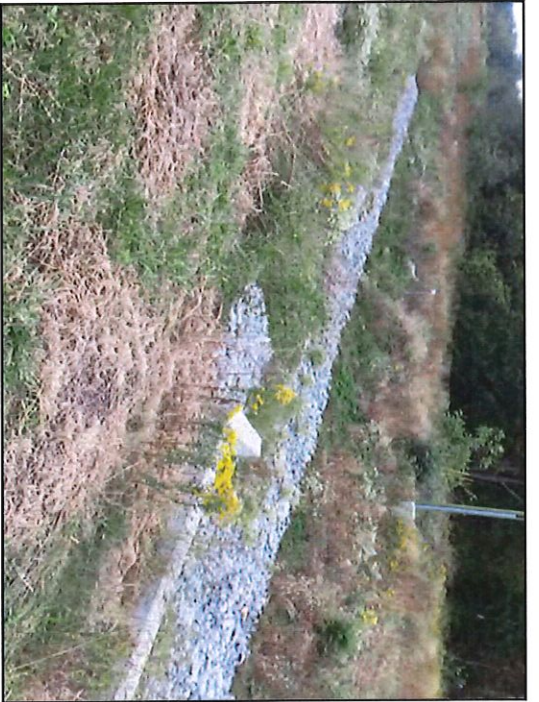
63. View of UNT 1 from PSL, looking southwest (downstream).



64. View of UNT 2 from confluence of UNT 1 and UNT 2, looking northwest (upstream).

SITE PHOTOGRAPHS—9/26/2018

S.R. 60 and Salem Bypass Roundabout
Roundabout Intersection Improvement
Washington Township, Washington County, Indiana
Des. No. 1702225



65. View of northeastern bank of UNT 2 and RSD 8, looking east.



66. View of UNT 2 and Wetland C (PEM1C), looking southeast (downstream).



67. View of southwestern bank of UNT 2, looking south.



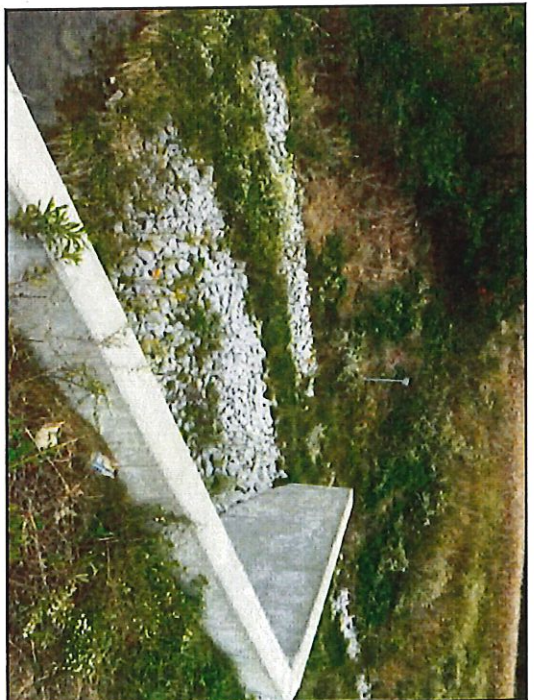
68. View of southwestern bank to UNT 2, looking northwest.

SITE PHOTOGRAPHS—9/26/2018

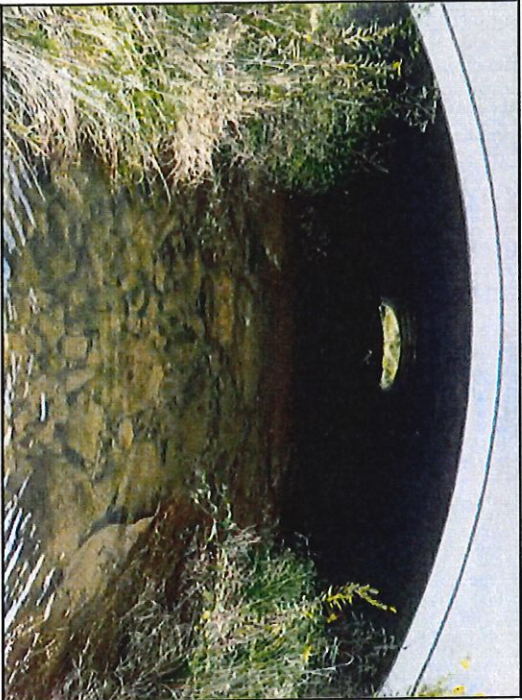
S. R. 60 and Salem Bypass Roundabout
Roundabout Intersection Improvement
Washington Township, Washington County, Indiana
Des. No. 1702225



69. View of UNT 2, looking northwest (upstream).



70. View of northeastern bank of UNT 2 and RSD 9, looking north.



71. View of UNT 2, looking southeast (downstream).



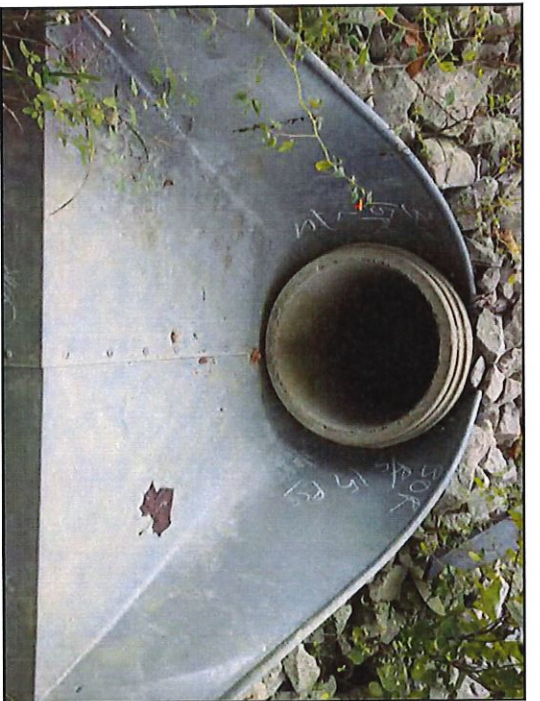
72. View of UNT 2, looking southeast (downstream).

SITE PHOTOGRAPHS—9/26/2018

S.R. 60 and Salem Bypass Roundabout
Roundabout Intersection Improvement
Washington Township, Washington County, Indiana
Des. No. 1702225



73. View of UNT 2, looking northwest (upstream).



74. View of culvert, approximately 30 inches in diameter, looking west.



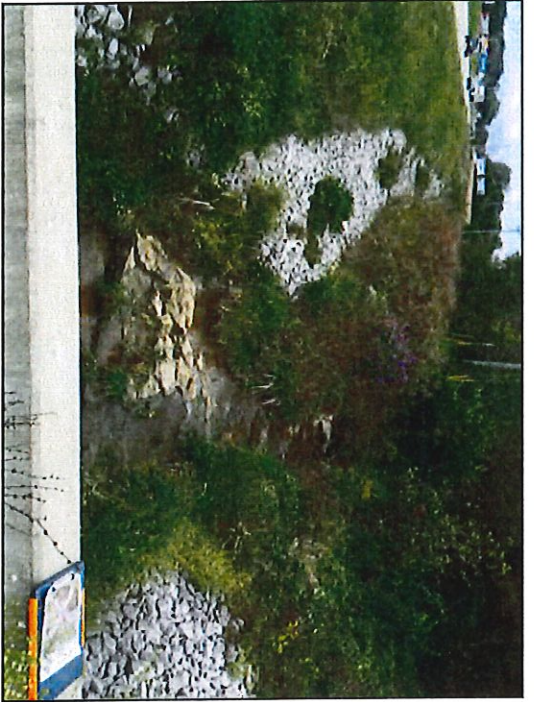
75. View of culvert, approximately 30 inches in diameter, and UNT 2, looking east.



76. View of UNT 2, looking southeast (downstream).

SITE PHOTOGRAPHS—9/26/2018

S.R. 60 and Salem Bypass Roundabout
Roundabout Intersection Improvement
Washington Township, Washington County, Indiana
Des. No. 1702225



77. View of UNT 2 and RSD 1, looking northwest (upstream).



78. View of UNT 2 from PSL, looking northwest (upstream).



79. View of UNT 2 from PSL, looking southeast (downstream).

SITE PHOTOGRAPHS—9/26/2018

S.R. 60 and Salem Bypass Roundabout
Roundabout Intersection Improvement
Washington Township, Washington County, Indiana
Des. No. 1702225