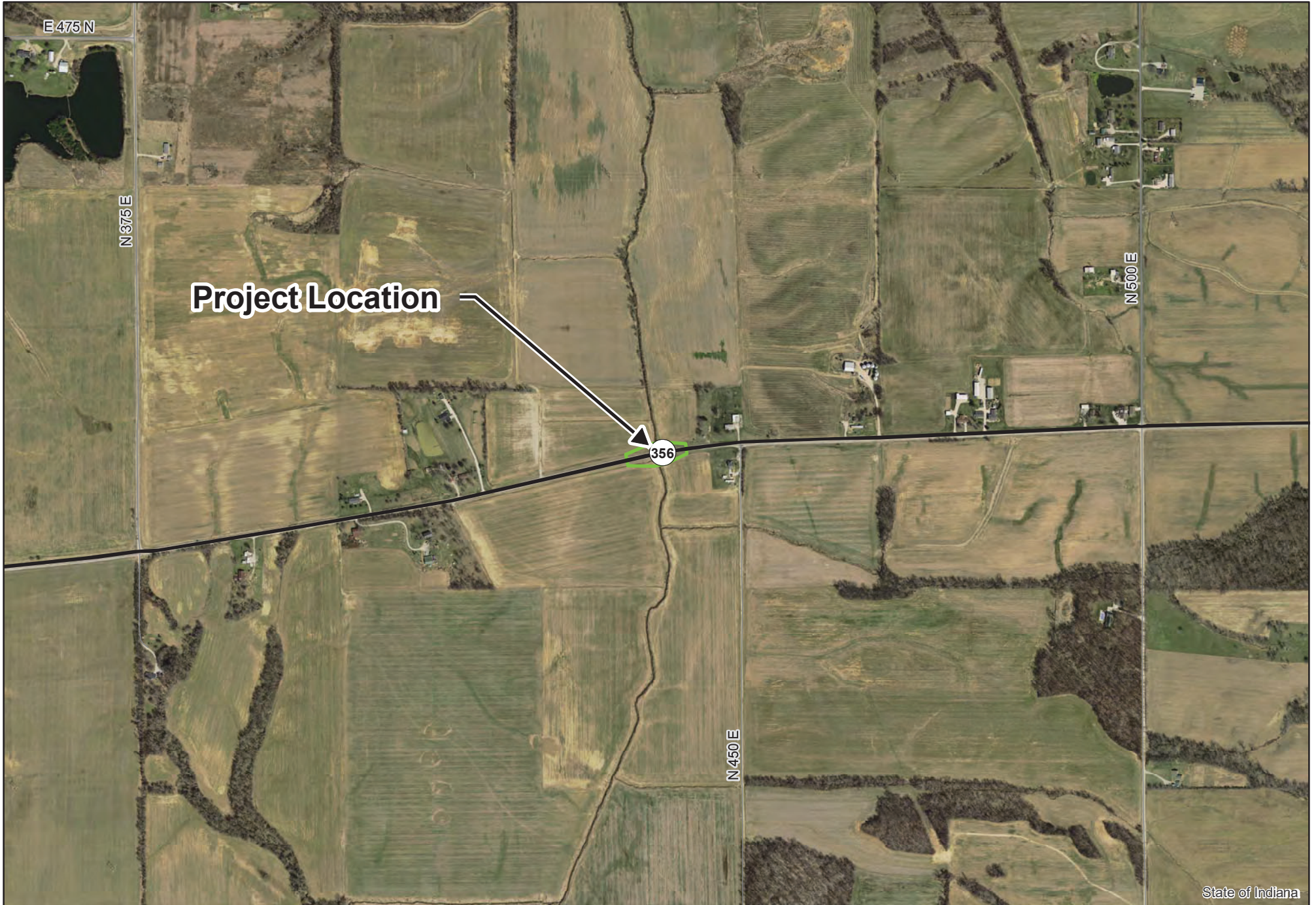
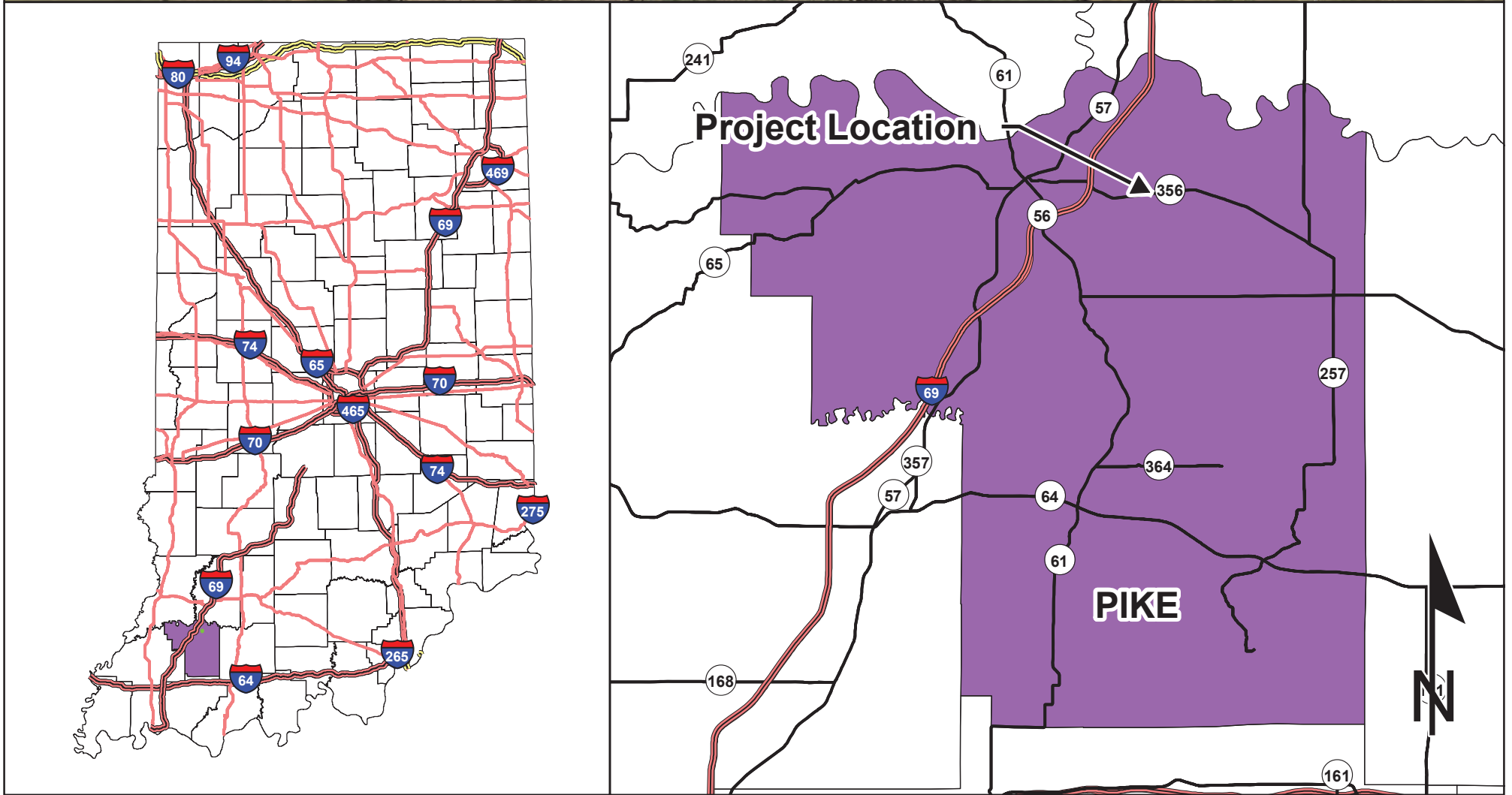


Project Location Map  
 Des. No. 1700150 Bridge Replacement  
 SR 356, 4.69 Miles East of SR 57  
 Pike County, Indiana



State of Indiana



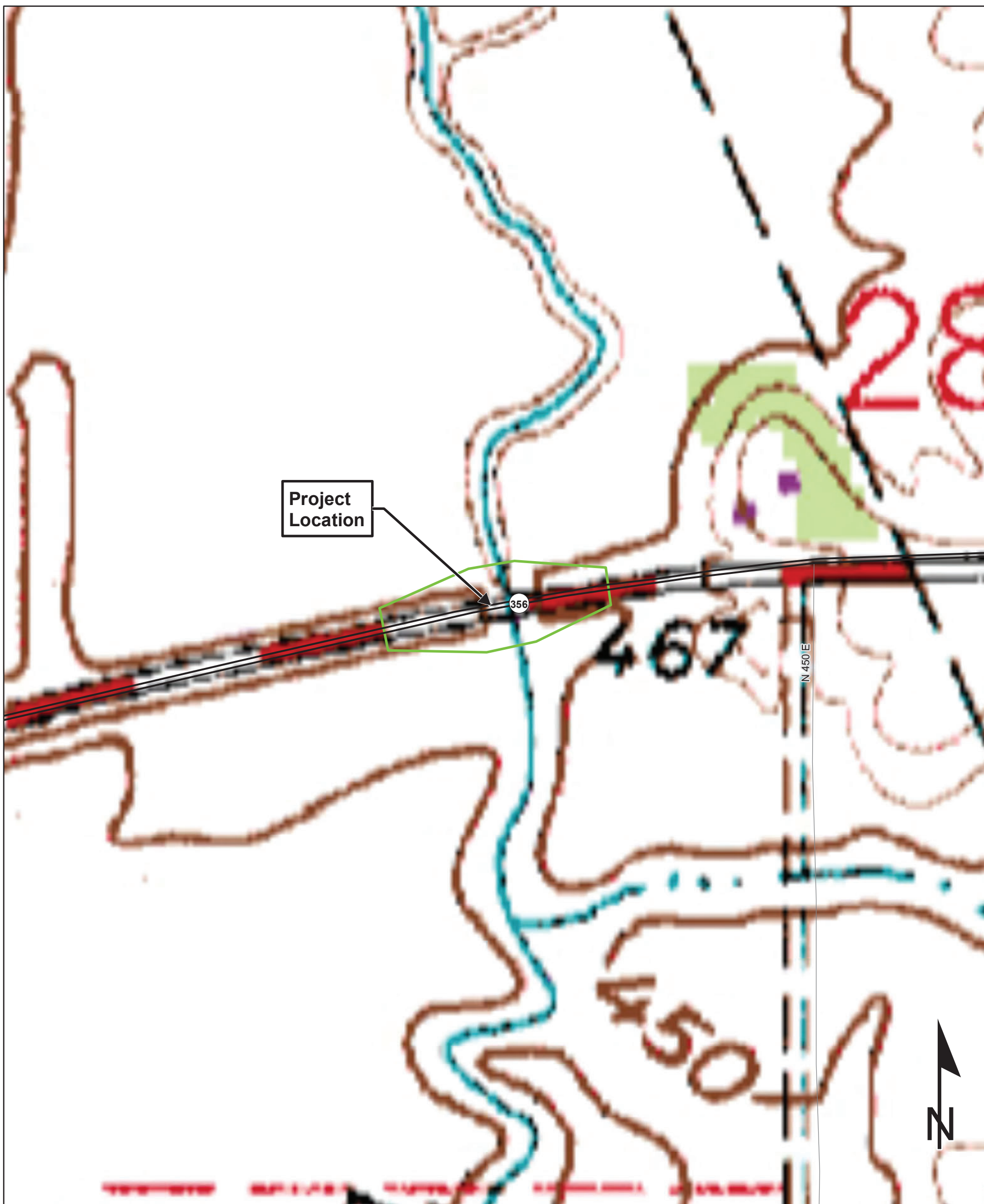
**Sources:**  
**Non Orthophotography**  
**Data** - Obtained from the State of Indiana Geographical Information Office Library  
**Orthophotography** - Obtained from Indiana Map Framework Data ([www.indianamap.org](http://www.indianamap.org))  
**Map Projection:** UTM Zone 16 N **Map Datum:** NAD83

This map is intended to serve as an aid in graphic representation only. This information is not warranted for accuracy or other purposes.



INDIANA  
 STATEWIDE  
 GIS DATA

USGS Topographic Map  
Des. No. 1700150 Bridge Replacement  
SR 356, 4.69 Miles East of SR 57  
Pike County, Indiana



Sources:  
**Non Orthophotography**  
**Data** - Obtained from the State of Indiana Geographical Information Office Library  
**Orthophotography** - Obtained from Indiana Map Framework Data ([www.indianamap.org](http://www.indianamap.org))  
**Map Projection:** UTM Zone 16 N **Map Datum:** NAD83

This map is intended to serve as an aid in graphic representation only. This information is not warranted for accuracy or other purposes.

WINSLOW QUADRANGLE  
INDIANA  
7.5 MINUTE SERIES  
(TOPOGRAPHIC)

PROJECT	DESIGNATION
1700150	1700150
CONTRACT	BRIDGE FILE
B-40553	356-63-10326

# INDIANA DEPARTMENT OF TRANSPORTATION



STRUCTURE INFORMATION				
STRUCTURE	TYPE	SPAN AND SKEW	OVER	STATION
356-63-10326	PRESTRESSED CONCRETE BULB TEE BEAM BRIDGE	1 SPAN: 90'-0" SKEW: 0°00'00"	MUD CREEK	244+57.00 "A"

KIN PROJECT INFORMATION	
DESIGNATION	PROJECT DESCRIPTION
1700150	SR 356 OVER MUD CREEK (LEAD DES)
1700166	SR 65 OVER BRANCH HARDIN CREEK
1700160	SR 65 OVER HARDIN CREEK
1700165	SR 65 OVER BLACK RIVER

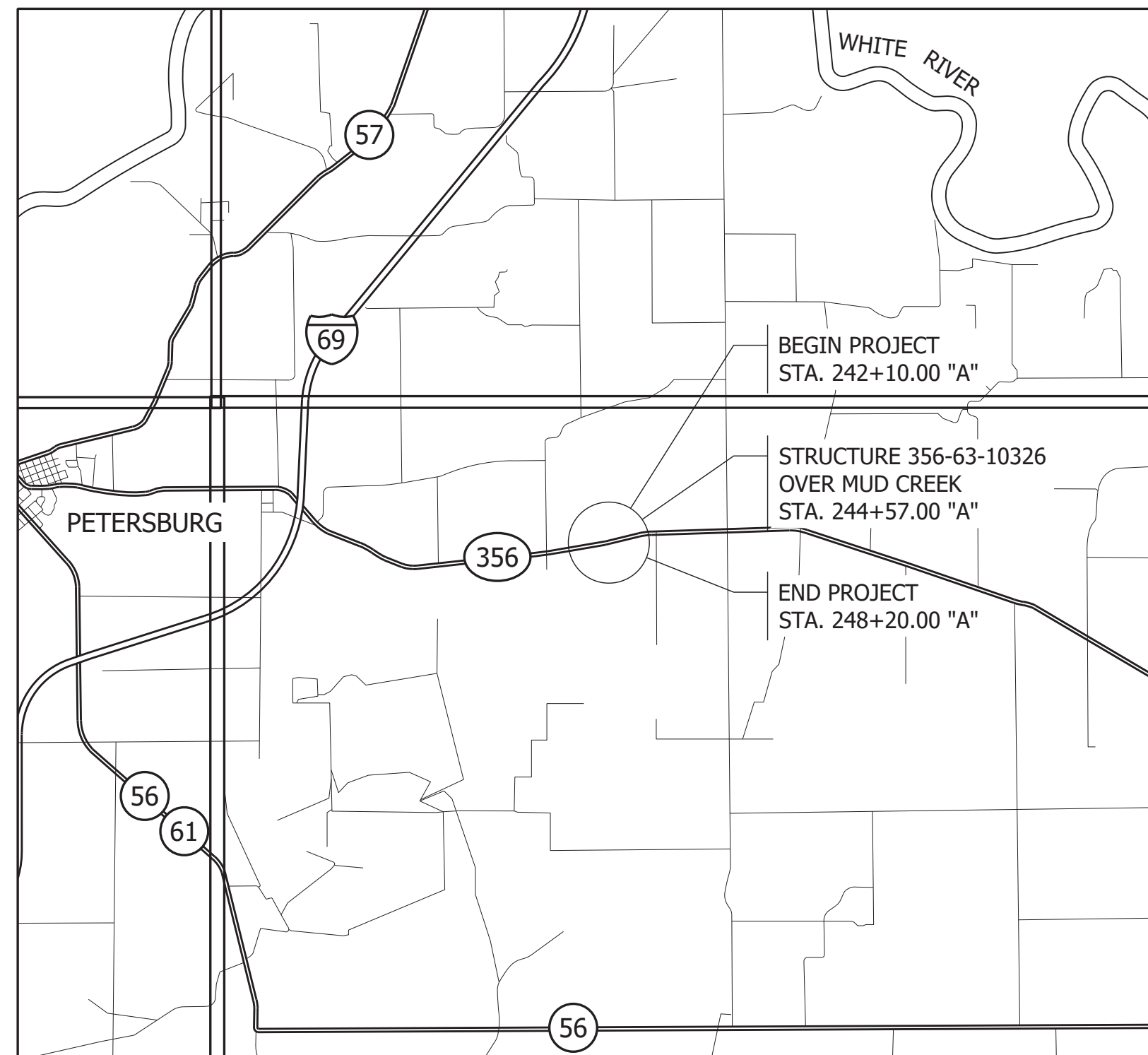
## BRIDGE PLANS

FOR SPANS OVER 20 FEET

ROUTE: S.R. 356 AT: RP 4+69

PROJECT NO. 1700150 P.E.  
1700150 R/W  
1700150 CONST.

BRIDGE REPLACEMENT ON S.R. 356 OVER MUD CREEK, LOCATED APPROXIMATELY 4.69 MILES EAST OF S.R. 57 IN SECTION 28, T-1-N, R-7-W, JEFFERSON TOWNSHIP, PIKE COUNTY, INDIANA



STAGE 1 PLANS  
SEPTEMBER 2019



SCALE:  
1" = 5000'

TRAFFIC DATA	S.R. 356
A.A.D.T. (2022)	1898 V.P.D.
A.A.D.T. (2042)	1947 V.P.D.
D.H.V. (2042)	229 V.P.H.
DIRECTIONAL DISTRIBUTION	49 % EAST
TRUCKS	7.66 % D.H.V. 4.82 % A.A.D.T.

DESIGN DATA	
DESIGN SPEED	55 M.P.H.
PROJECT DESIGN CRITERIA	3R (NON-FREEWAY)
FUNCTIONAL CLASSIFICATION	MAJOR COLLECTOR
RURAL/URBAN	RURAL
TERRAIN	LEVEL
ACCESS CONTROL	NONE



LATITUDE: 38°29'11.6" N LONGITUDE: 87°11'44.1" W

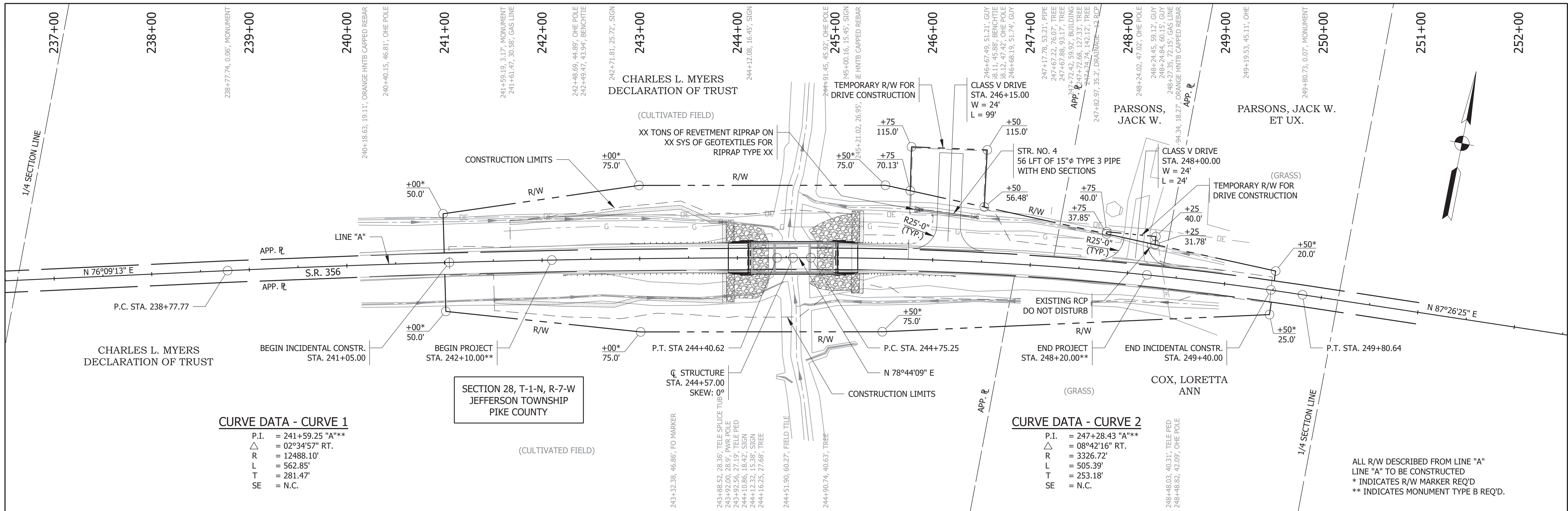
BRIDGE LENGTH:	0.025	MI.
ROADWAY LENGTH:	0.090	MI.
TOTAL LENGTH:	0.115	MI.
MAX. GRADE:	4.54	%

H.U.C. 14: 05120208170090



INDIANA DEPARTMENT OF TRANSPORTATION  
STANDARD SPECIFICATIONS DATED 2020 TO  
BE USED WITH THESE PLANS.

<b>PRELIMINARY</b>	PLANS PREPARED BY: CORRADINO, LLC	317-488-2363 PHONE NUMBER	BRIDGE FILE 356-63-10326	
	CERTIFIED BY: _____	DATE _____	DESIGNATION 1700150	
	APPROVED FOR LETTING: _____	DATE _____	SURVEY BOOK N/A	SHEETS 1 of 19
	INDIANA DEPARTMENT OF TRANSPORTATION	DATE _____	CONTRACT B-40553	PROJECT 1700150



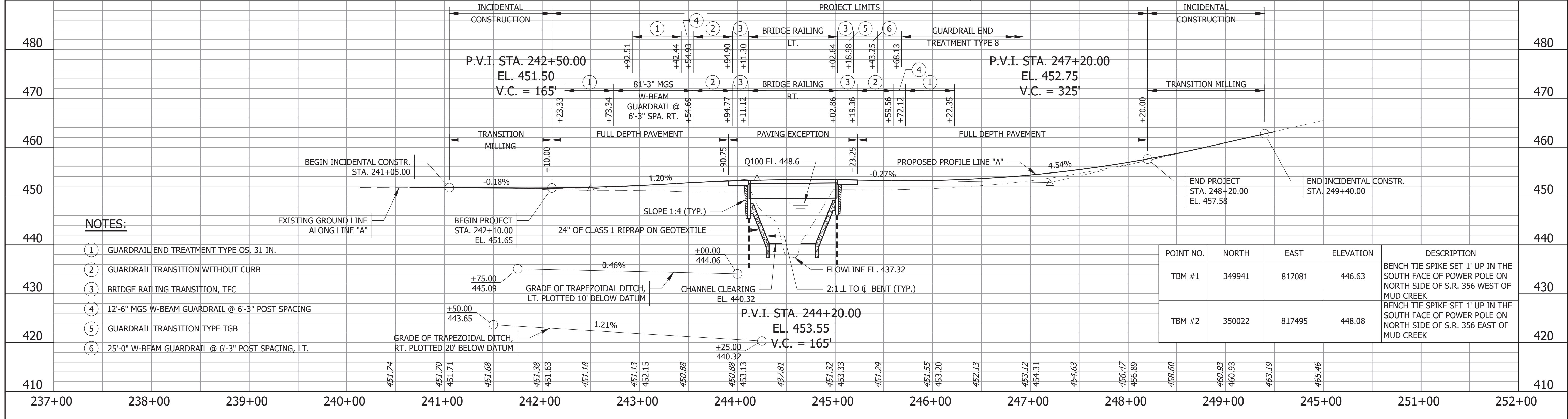
**CURVE DATA - CURVE 1**

P.I.	= 241+59.25 "A"***
Δ	= 02°34'57" RT.
R	= 12488.10'
L	= 562.85'
T	= 281.47'
SE	= N.C.

**CURVE DATA - CURVE 2**

P.I.	= 247+28.43 "A"***
Δ	= 08°42'16" RT.
R	= 3326.72'
L	= 505.39'
T	= 253.18'
SE	= N.C.

ALL R/W DESCRIBED FROM LINE "A"  
 LINE "A" TO BE CONSTRUCTED  
 \* INDICATES R/W MARKER REQ'D  
 \*\* INDICATES MONUMENT TYPE B REQ'D.



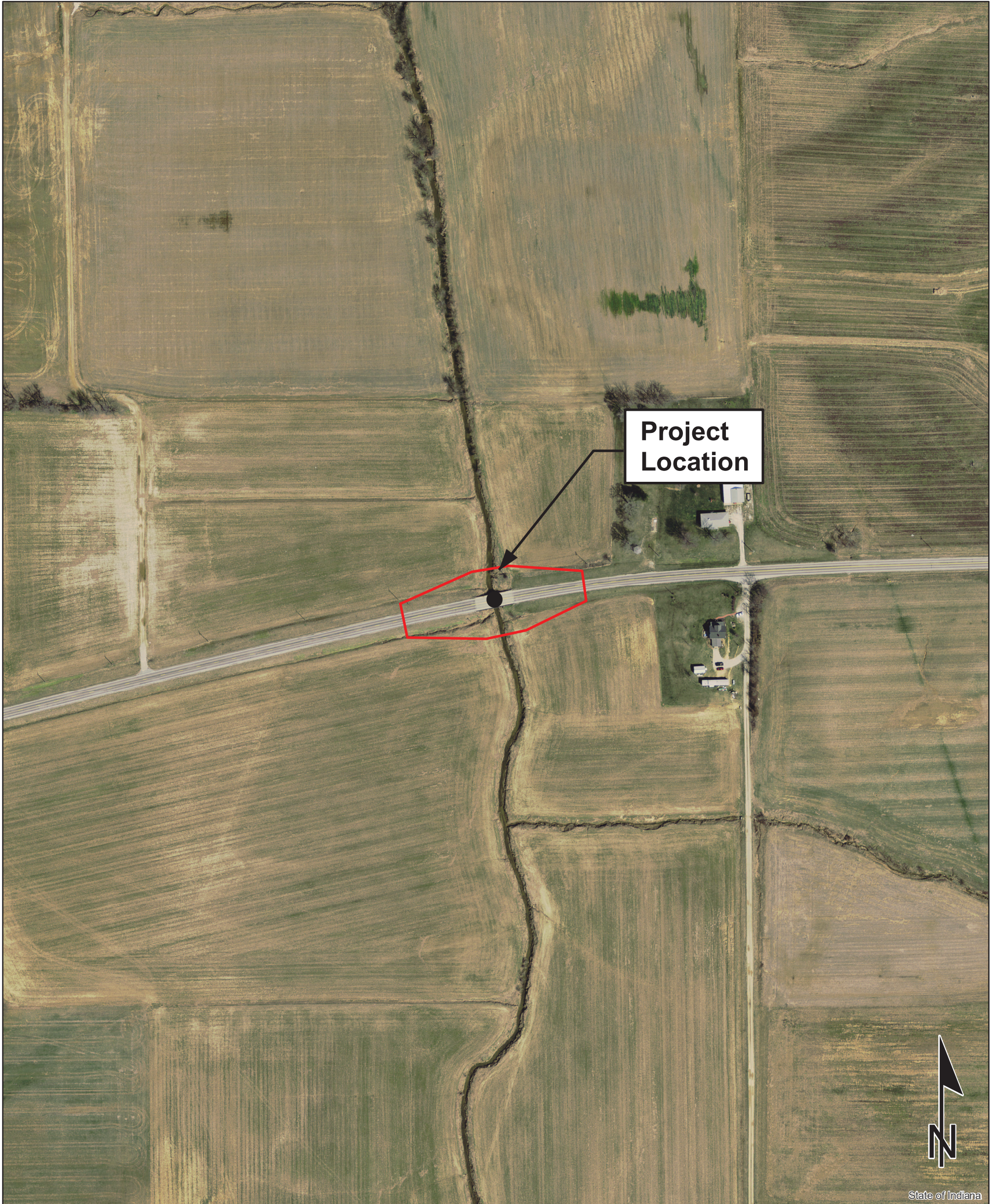
**NOTES:**

- ① GUARDRAIL END TREATMENT TYPE OS, 31 IN.
- ② GUARDRAIL TRANSITION WITHOUT CURB
- ③ BRIDGE RAILING TRANSITION, TFC
- ④ 12'-6" MGS W-BEAM GUARDRAIL @ 6'-3" POST SPACING
- ⑤ GUARDRAIL TRANSITION TYPE TGB
- ⑥ 25'-0" W-BEAM GUARDRAIL @ 6'-3" POST SPACING, LT.

File Name: F:\4497 - HNTB SR 356 over Mud Creek\50 Plans\30 Sheet Drawings\10 Bridge Sheets\S-PLAN-PROFILE-01.dwg - Layout1  
 Modified / By: September 5, 2019 6:00:25 PM / zhh  
 Plotted / By: September 6, 2019 8:36:17 AM / Zed Hott

<p><b>PRELIMINARY</b></p>	<p>RECOMMENDED FOR APPROVAL _____</p> <p>DESIGNED: ZZH      DRAWN: SEJ</p> <p>CHECKED: BJM      CHECKED: ZZH</p>	<p>INDIANA DEPARTMENT OF TRANSPORTATION</p> <p>PLAN AND PROFILE</p>	<p>HORIZONTAL SCALE 1" = 50'-0" UNLESS NOTED</p> <p>VERTICAL SCALE 1" = 10'-0" UNLESS NOTED</p>	<p>BRIDGE FILE 356-63-10326</p> <p>DESIGNATION 1700150</p> <p>SHEET 8 of 19</p> <p>PROJECT 1700150</p>
---------------------------	--	---	---	--

Aerial Map  
Des. No. 1700150 Bridge Replacement  
SR 356, 4.69 Miles East of SR 57  
Pike County, Indiana



Sources: 0.05 0.025 0 0.05 Miles  
**Non Orthophotography**  
**Data** - Obtained from the State of Indiana Geographical Information Office Library  
**Orthophotography** - Obtained from Indiana Map Framework Data ([www.indianamap.org](http://www.indianamap.org))  
**Map Projection:** UTM Zone 16 N **Map Datum:** NAD83  
This map is intended to serve as an aid in graphic representation only. This information is not warranted for accuracy or other purposes.

INDIANA STATEWIDE  
AERIAL IMAGERY  
FLOWN IN 2016