

NOTES:

OPTION 1: STEEL POSTS 1 THROUGH 8: FOUNDATION TUBES W/ 43" STEEL PLUG WELDED POSTS  
 POSTS 1 & 2: FOUNDATION TUBES EITHER 6'-0" OR 4'-6" WITH SOIL PLATES  
 POSTS 3 TO 8: FOUNDATION TUBES ARE 4'-6".

**OPTION 2: STEEL POSTS 1 THROUGH 8: UPPER AND LOWER HINGED POSTS (PREFERRED OPTION)**



Road Systems Inc.  
 Technical Support  
 (330) 346-0721  
 www.roadsystems.com

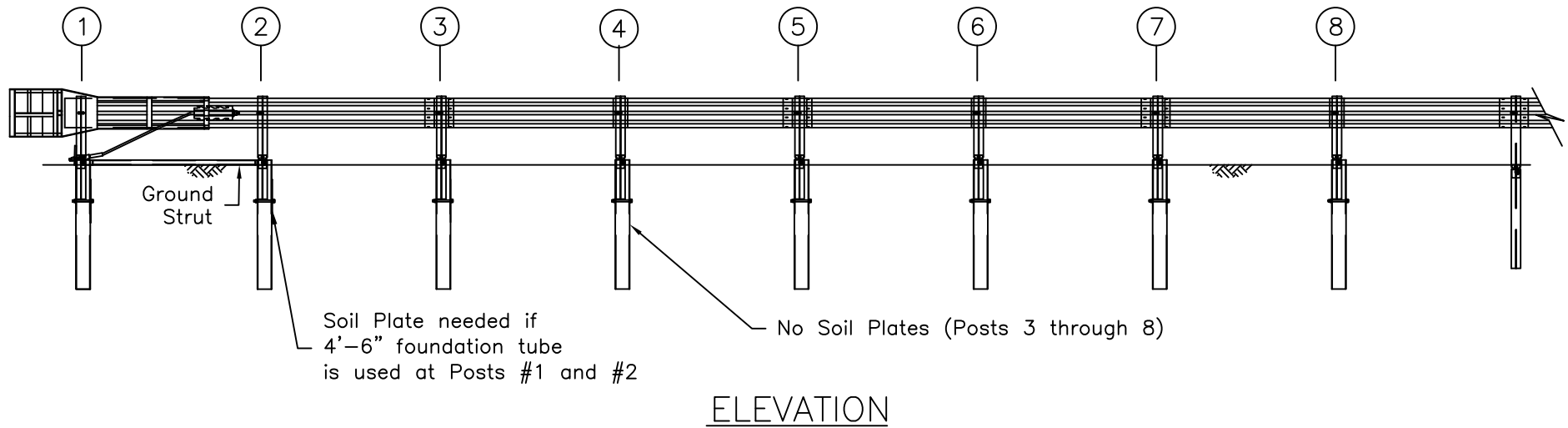
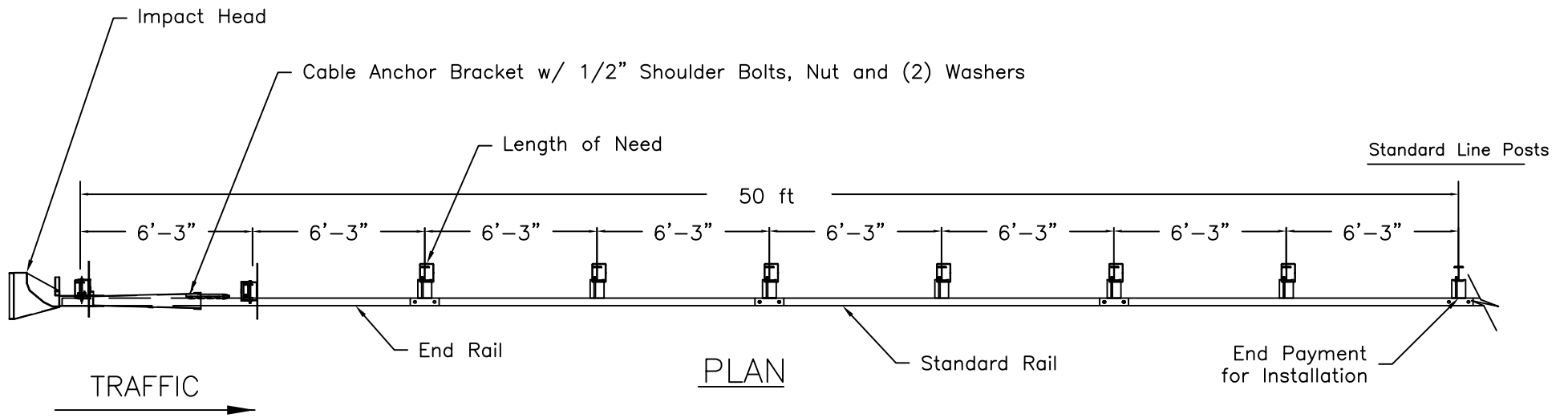
Sequential Kinking Terminal (SKT)

SHEET NO.

1 OF 10

DATE:

03/08/2013



Option 1: Plug Welded Posts in Foundation Tubes



Road Systems Inc.  
 Technical Support  
 (330) 346-0721  
 www.roadsystems.com

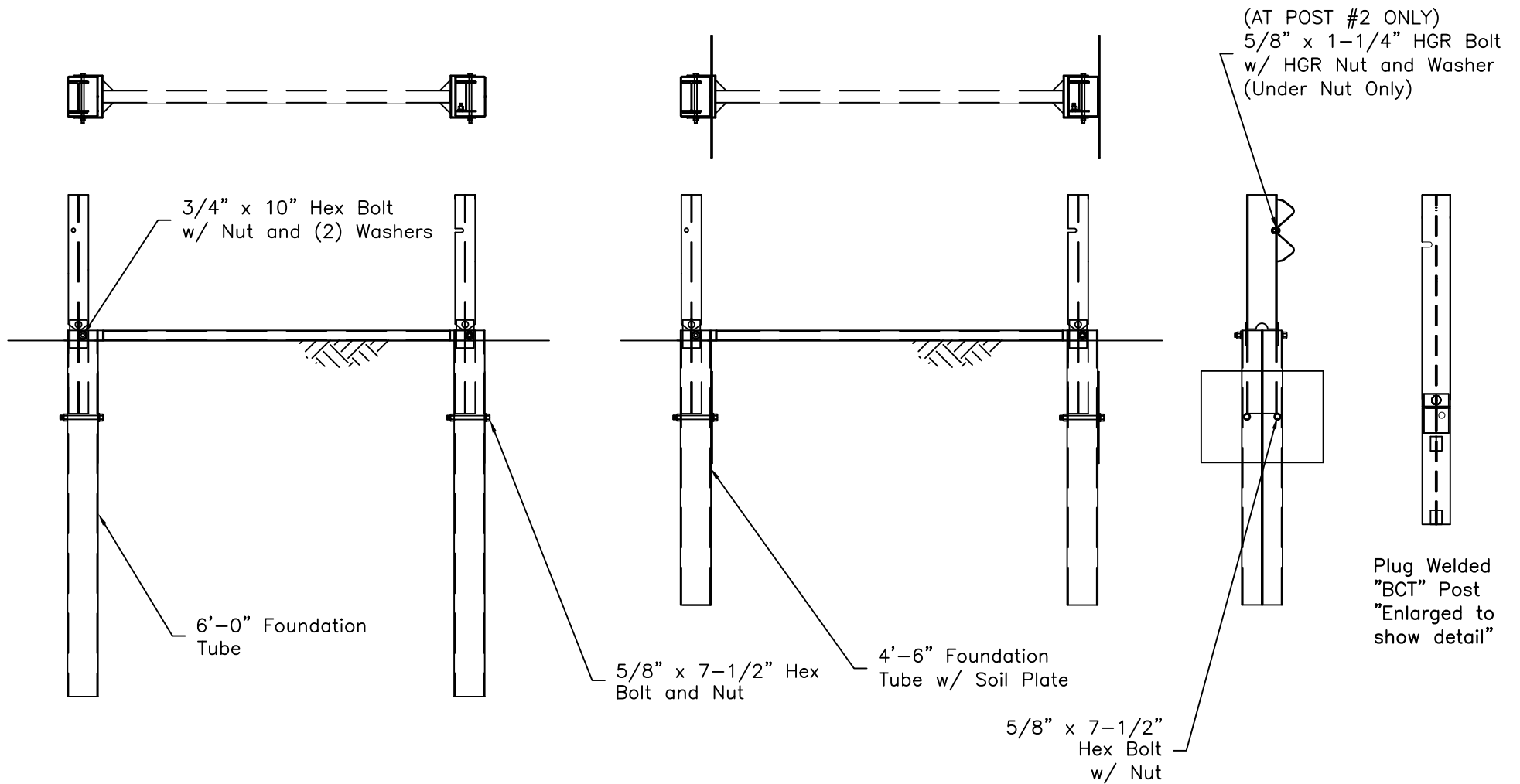
Sequential Kinking Terminal (SKT)

SHEET NO.

2 OF 10

DATE:

03/08/2013



Option 1: Plug Welded Post Details



Road Systems Inc.  
Technical Support  
(330) 346-0721  
www.roadsystems.com

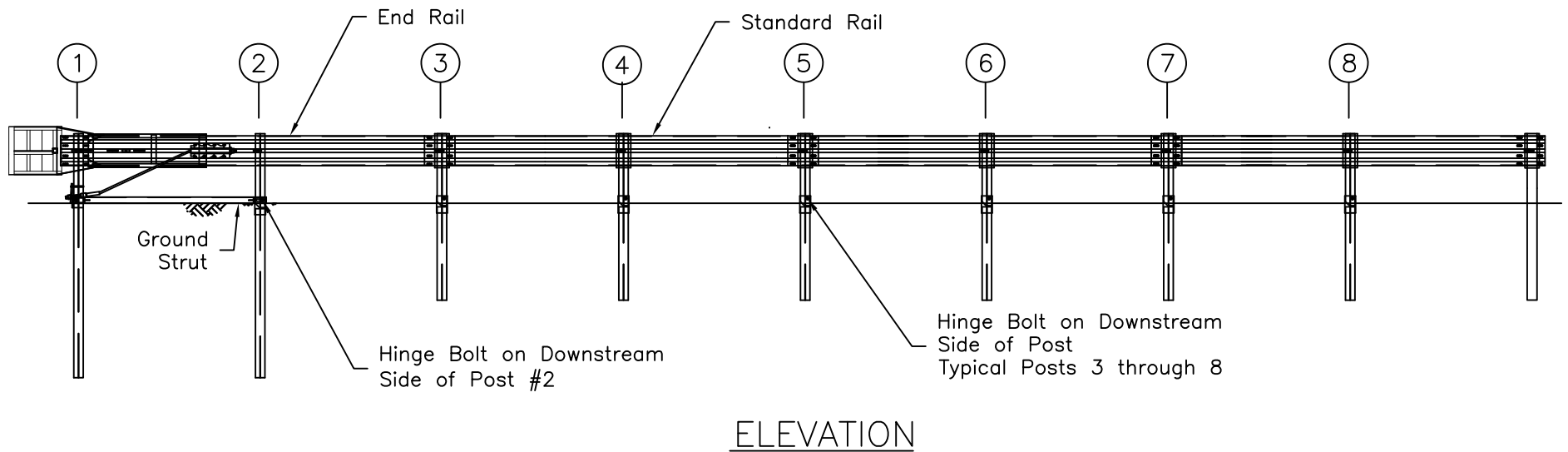
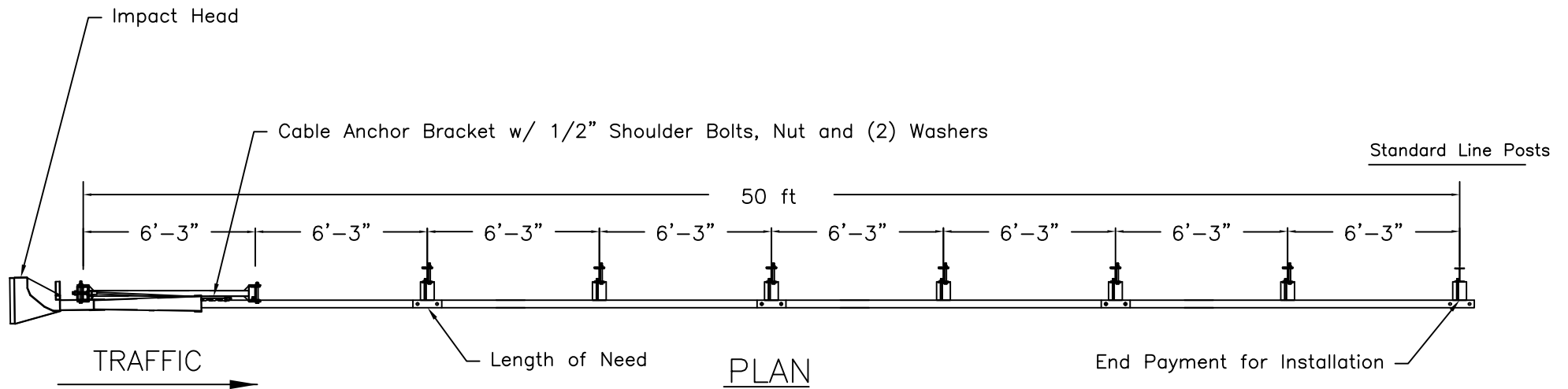
## Sequential Kinking Terminal (SKT)

SHEET NO.

3 OF 10

DATE:

03/08/2013



Option 2: Hinged Steel Posts (Preferred Option)



Road Systems Inc.  
 Technical Support  
 (330) 346-0721  
 www.roadsystems.com

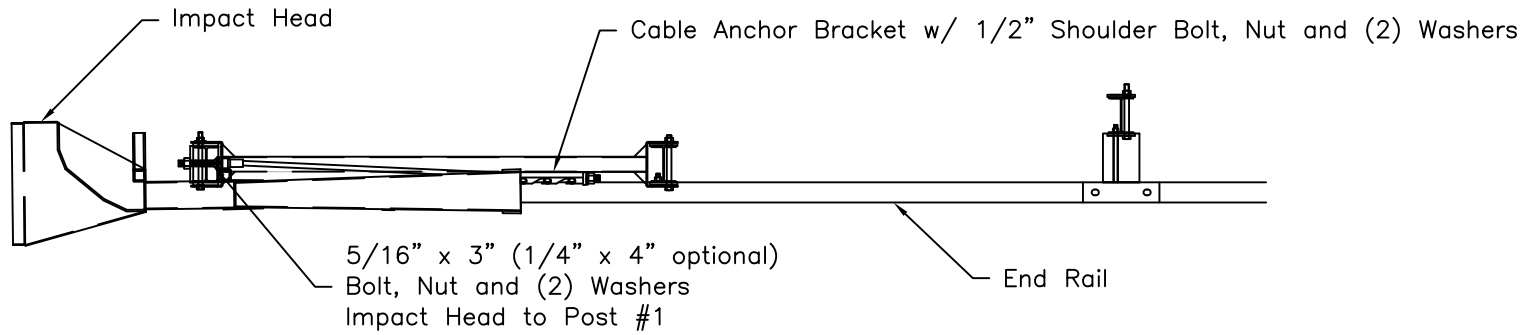
Sequential Kinking Terminal (SKT)

SHEET NO.

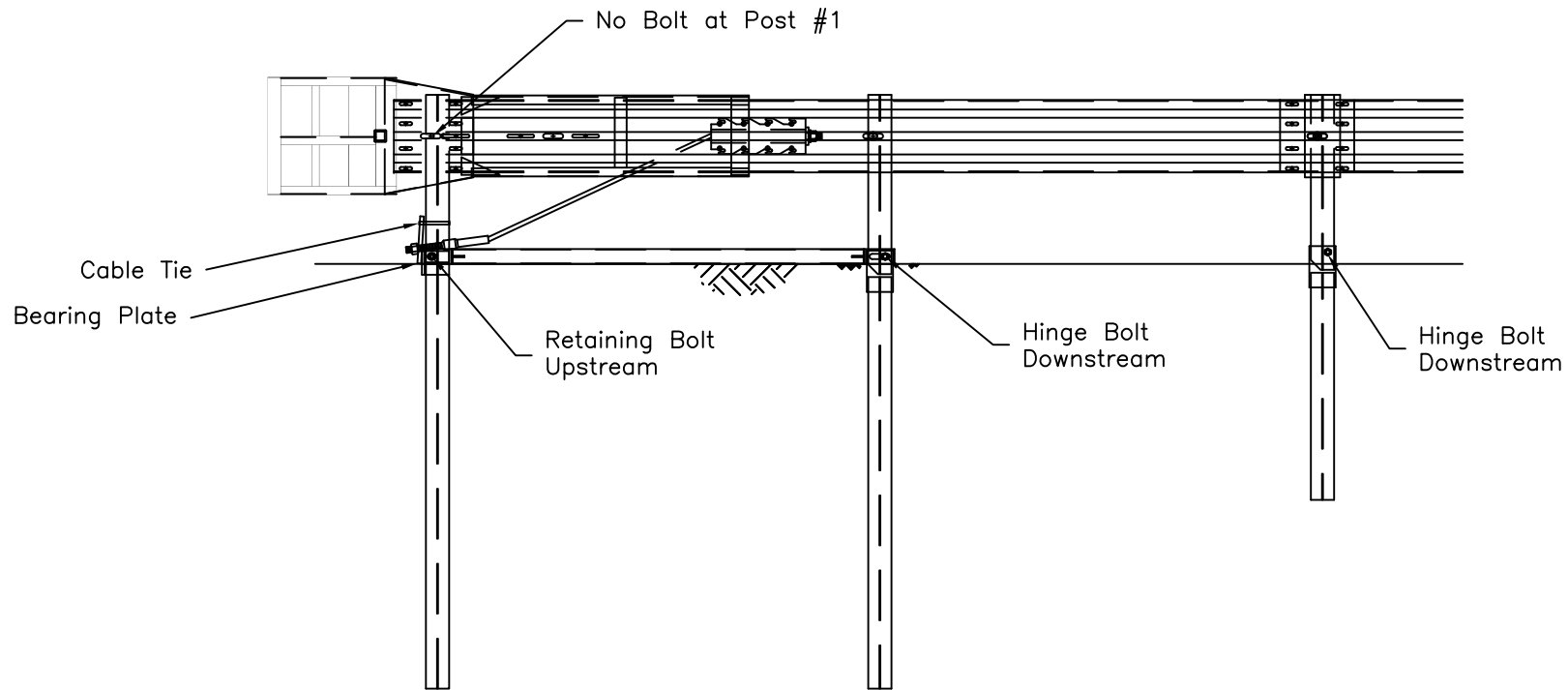
4 OF 10

DATE:

03/08/2013



TRAFFIC



Option 2: Hinged Steel Posts



Road Systems Inc.  
Technical Support  
(330) 346-0721  
www.roadsystems.com

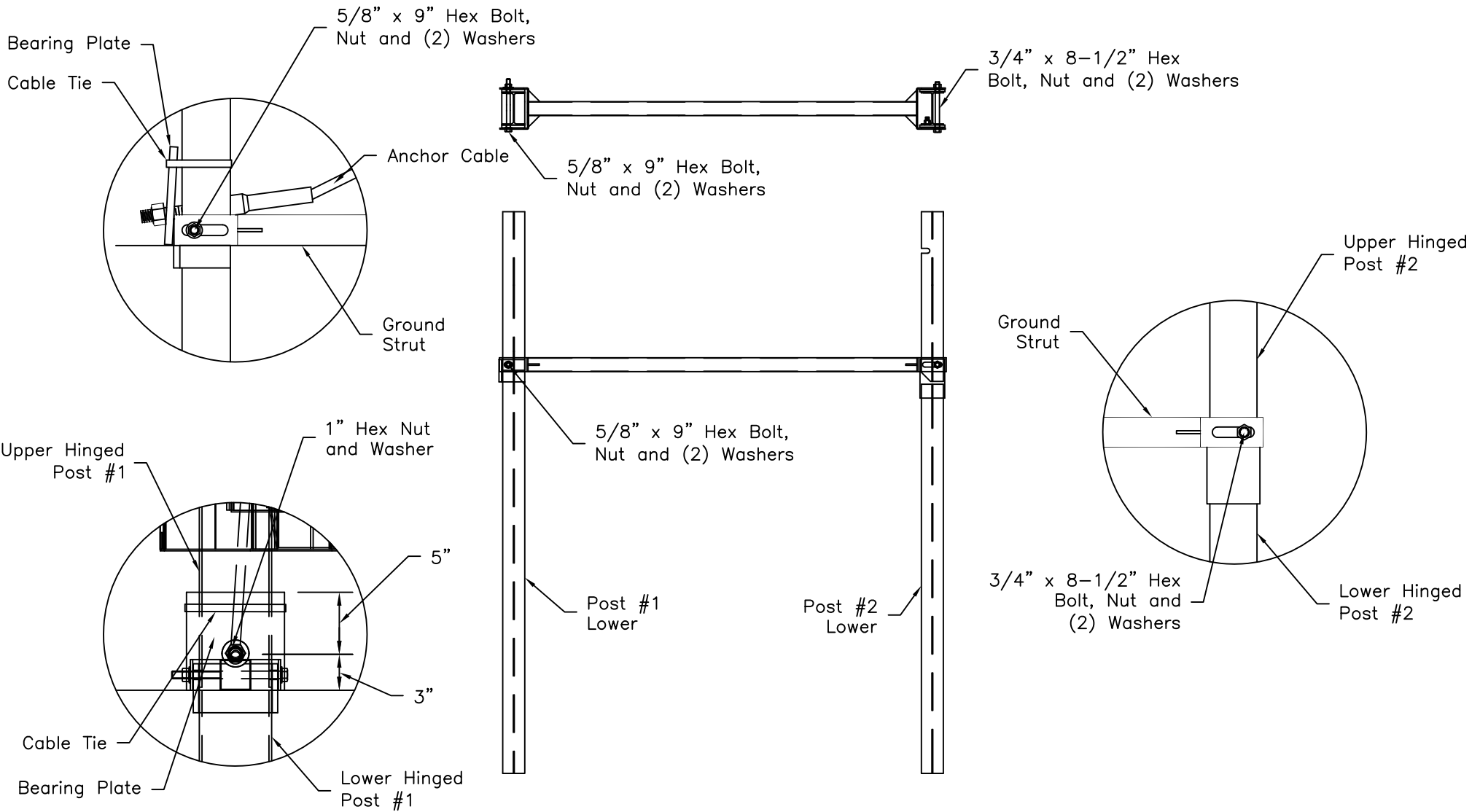
Sequential Kinking Terminal (SKT)

SHEET NO.

5 OF 10

DATE:

03/08/2013



Option 2: Hinged Steel Posts



Road Systems Inc.  
 Technical Support  
 (330) 346-0721  
 www.roadsystems.com

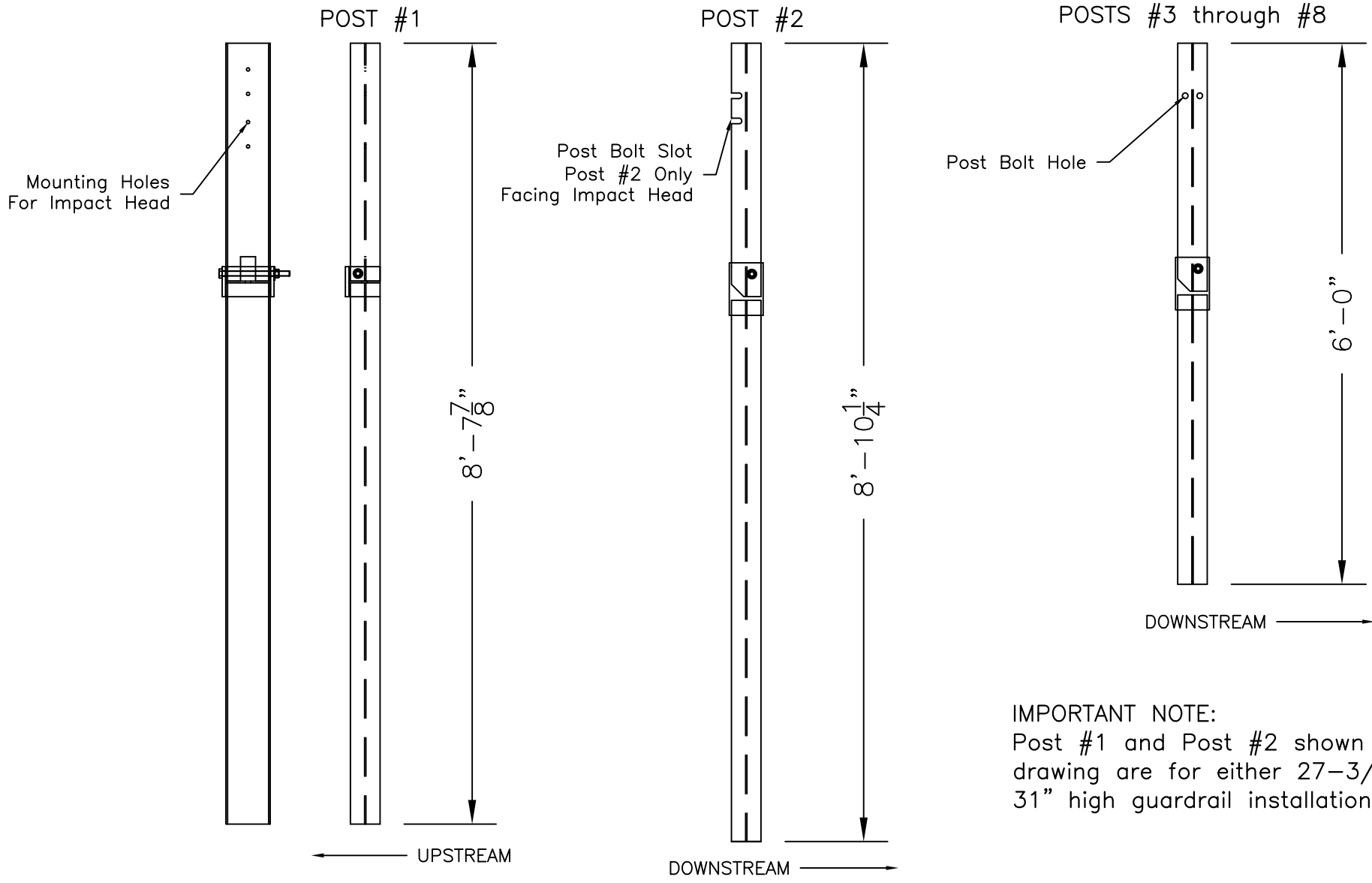
Sequential Kinking Terminal (SKT)

SHEET NO.

6 OF 10

DATE:

03/08/2013



IMPORTANT NOTE:  
 Post #1 and Post #2 shown in this drawing are for either 27-3/4" or 31" high guardrail installations.

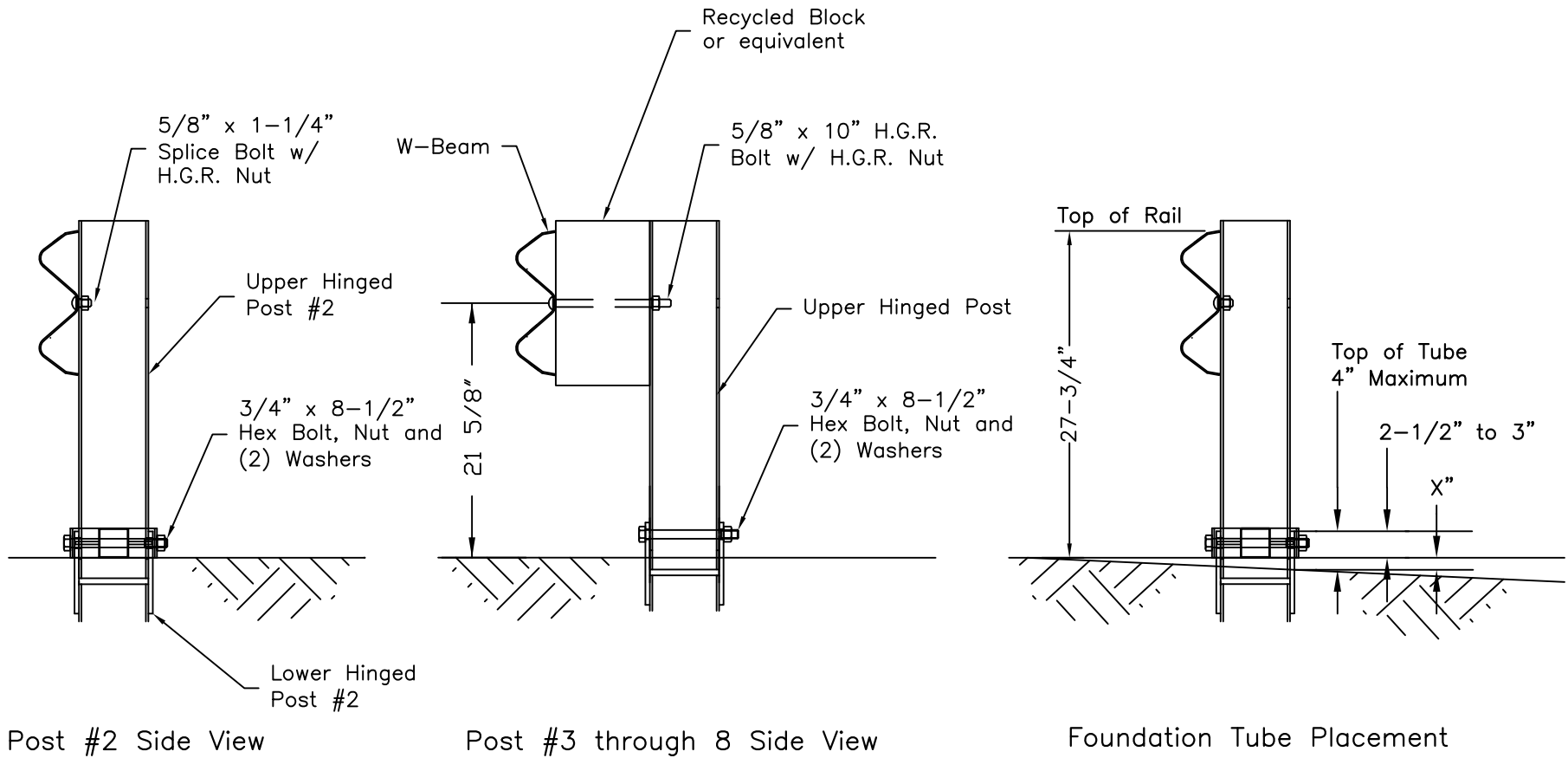
Option 2: Hinged Steel Posts



Road Systems Inc.  
 Technical Support  
 (330) 346-0721  
 www.roadsystems.com

Sequential Kinking Terminal (SKT)

SHEET NO.	7 OF 10	DATE:	03/08/2013
-----------	---------	-------	------------



Option 2: Hinged Steel Posts Cross-Sections



Road Systems Inc.  
 Technical Support  
 (330) 346-0721  
 www.roadsystems.com

Sequential Kinking Terminal (SKT)

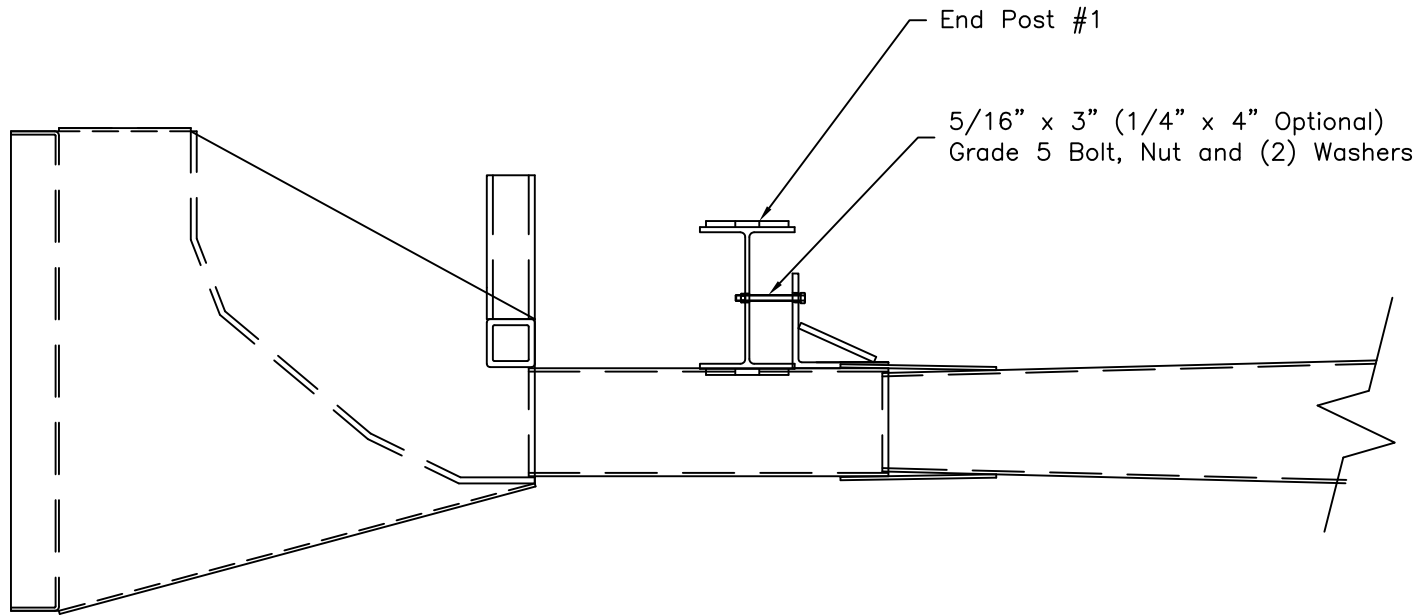
SHEET NO.

8 OF 10

DATE:

03/08/2013





Impact Head Mounting Detail



Road Systems Inc.  
 Technical Support  
 (330) 346-0721  
 www.roadsystems.com

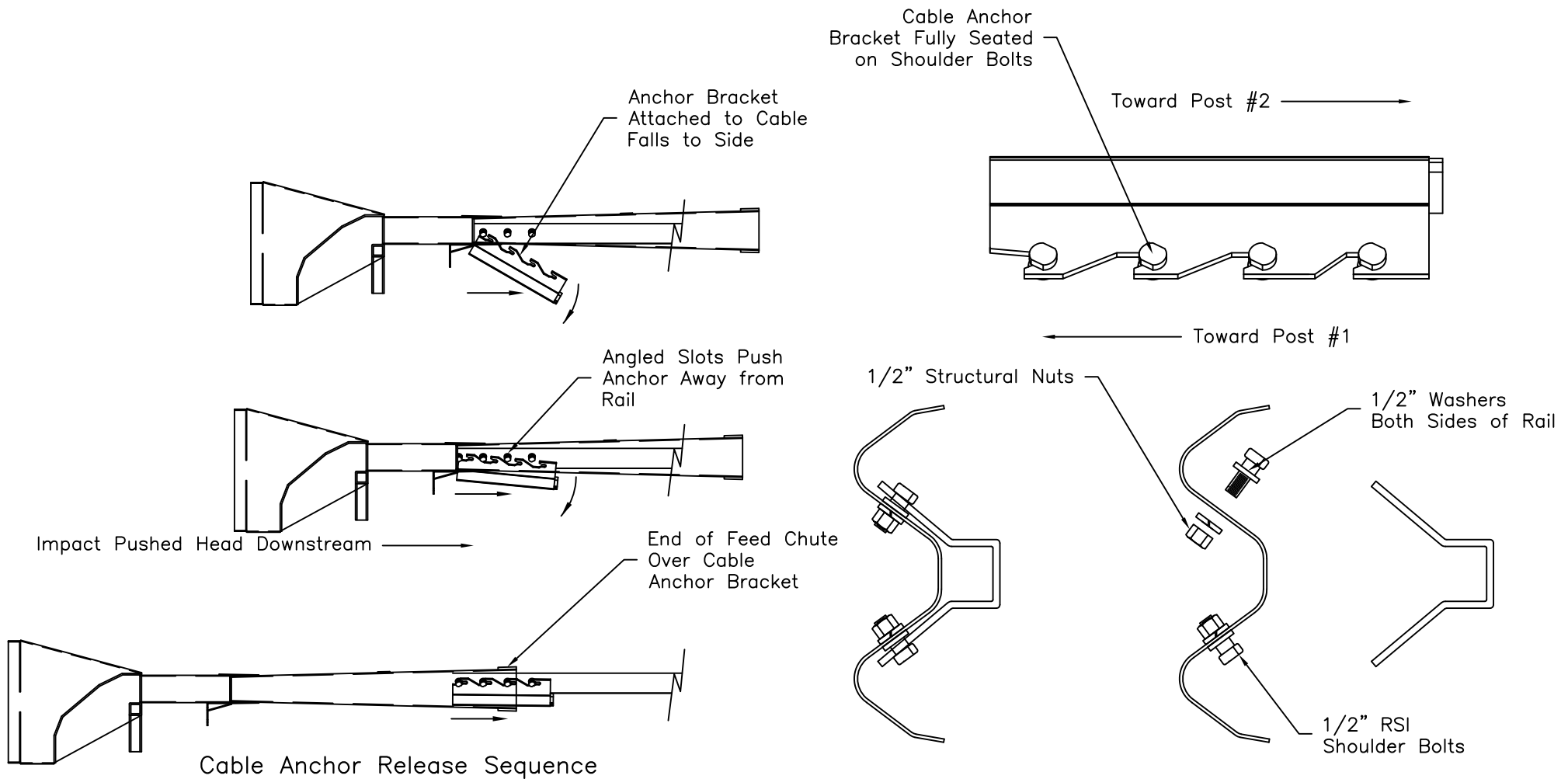
Sequential Kinking Terminal (SKT)

SHEET NO.

9 OF 10

DATE:

03/08/2013



### Cable Anchor Bracket Details



Road Systems Inc.  
 Technical Support  
 (330) 346-0721  
 www.roadsystems.com

### Sequential Kinking Terminal (SKT)

SHEET NO.

10 OF 10

DATE:

03/08/2013

# Steel Post SKT Inspection Checklist

State: \_\_\_\_\_

Date: \_\_\_\_\_

Project #: \_\_\_\_\_ Location: \_\_\_\_\_

- The rail height is in accordance with the contract plans. This is approximately 27 ¾" above the edge of the shoulder or the finished grade.
- The rail in the terminal is not curved and is not attached to the post at post location #1.
- The end rail panel has special slots and all rails are lapped in the proper direction.
- The ¾" x 8 ½" Hinge Bolt at posts #2 to #8 is on the downstream side of the post.
- The 5/8" x 9" Hinge Bolt at post location #1 is on the upstream side of the post.
- If the posts are Plug Welded, the splice plates are secure and the weld has not failed.
- At post #2, the open-ended slot for the post bolt is on the upstream side of the post.
- The guide chute of the impact head is parallel to the top of the rail and the impact head does not encroach on the shoulder (a maximum 25:1 taper is permitted to eliminate the potential for encroachment).
- The two hex bolts (¼" x 4" or 5/16" x 3") holding the impact head to post 1 are secured.
- The 8" x 8" bearing plate at post 1 is correctly positioned with the 5" dimension up & the 3" dimension down. The anchor cable is taut and correctly installed. A retainer/tie has been placed over the bearing plate to prevent rotation.
- The cable anchor bracket shoulder bolts are properly attached to the W-beam guardrail and the cable anchor bracket is fully seated on the shoulder portion of the bolts.
- If the posts were augered, be sure the backfill material around the posts is compacted.
- No washers are used on the face of the rail except at the cable anchor bracket bolts.
- If used, the foundation tubes do not protrude more than 4" above the ground line (measured by the AASHTO 5' cord method). Site grading may be necessary to meet this requirement.
- The finished SKT installation is in accordance with all specific State DOT guidelines.

Additional notes:

\_\_\_\_\_  
\_\_\_\_\_

Inspection performed by: \_\_\_\_\_