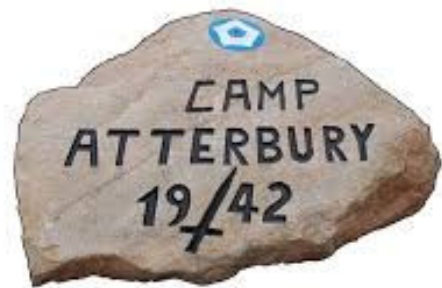
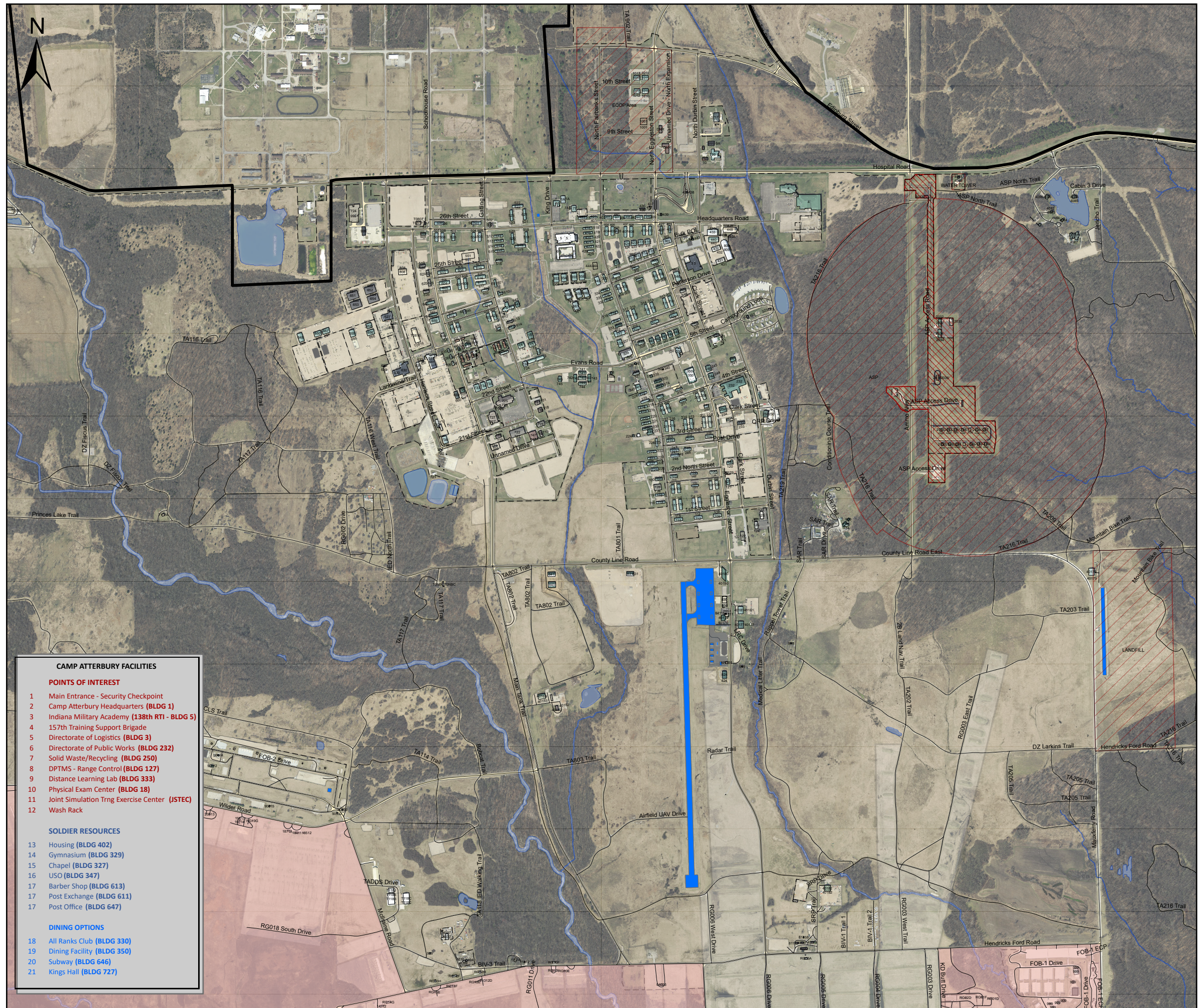




Camp Atterbury Cantonment Area & Railhead



Date: 1/10/2023



- CAMP ATTERBURY FACILITIES**
- POINTS OF INTEREST**
- 1 Main Entrance - Security Checkpoint
 - 2 Camp Atterbury Headquarters (BLDG 1)
 - 3 Indiana Military Academy (138th RTI - BLDG 5)
 - 4 157th Training Support Brigade
 - 5 Directorate of Logistics (BLDG 3)
 - 6 Directorate of Public Works (BLDG 232)
 - 7 Solid Waste/Recycling (BLDG 250)
 - 8 DPTMS - Range Control (BLDG 127)
 - 9 Distance Learning Lab (BLDG 333)
 - 10 Physical Exam Center (BLDG 18)
 - 11 Joint Simulation Trng Exercise Center (JSTEC)
 - 12 Wash Rack
- SOLDIER RESOURCES**
- 13 Housing (BLDG 402)
 - 14 Gymnasium (BLDG 329)
 - 15 Chapel (BLDG 327)
 - 16 USO (BLDG 347)
 - 17 Barber Shop (BLDG 613)
 - 17 Post Exchange (BLDG 611)
 - 17 Post Office (BLDG 647)
- DINING OPTIONS**
- 18 All Ranks Club (BLDG 330)
 - 19 Dining Facility (BLDG 350)
 - 20 Subway (BLDG 646)
 - 21 Kings Hall (BLDG 727)