



**Indiana Gaming Commission**  
**Sara Gonso Tait**  
**Executive Director**



**2019**  
*Annual Report to*  
*Governor Eric Holcomb*

# CONTENTS

Current Commission Members	2-3
Executive Director's Report	5-7
FY 2019 Tax Overview	9
FYS 2018-2019 Tax Comparison	10
Revenues and Expenditures	11
MBE/WBE Utilization	12
Organizational Chart	13-14
<b><u>Divisions</u></b>	
Division Statistics	16-18
<b><u>Indiana Casinos</u></b>	
Casino Map	20
Property Summaries	21-33
<b><u>Appendix</u></b>	35-43

# THE INDIANA GAMING COMMISSION

## Michael McMains (Chairman)



**Michael McMains**, of Indianapolis, is a health and business lawyer and is a graduate of the Purdue University College of Pharmacy and the Indiana University McKinney School of Law. Mr. McMains served on staff for then-U.S. Senator Dan Coats from 2010-2017, first as his state director and then as senior counsel.

Mr. McMains was appointed to the Commission in April 2018.

## Marc D. Fine (Vice Chairman)



**Marc D. Fine**, of Evansville, is an attorney with the firm of Jackson Kelly, PLLC. Mr. Fine is a 1981 graduate of the Indiana University School of Business with a B.S. in finance, with distinction, and a 1984 graduate of the University of Illinois College Of Law. He is a member of the Board of Directors of German American Bank, based in Jasper, Indiana.

Mr. Fine was appointed to the Commission in October 2007.

## Susan Williams



**Susan Williams**, of Indianapolis, recently retired as President of Indiana Sports Corporation. During her tenure at the helm of ISC, Indianapolis was awarded Big Ten Men's and Women's Basketball Tournaments and Football Championship, the 2008 Olympic Diving Trials, 2012 Super Bowl, 2015 Men's Final Four, and 2016 Women's Final Four. Prior to arriving at ISC, Ms. Williams served as Executive Director of the Indiana State Office Building Commission. She served 13 years on the Indianapolis-Marion County City-County Council. Ms. Williams received her undergraduate degree from Franklin College and earned a master's degree from Indiana University.

Ms. Williams was appointed to the Commission in January 2013.

## Joseph C. Svetanoff (Secretary)



**Joseph C. Svetanoff**, of Crown Point, is a partner at the law firm of Kopka Pinkus Dolin, P.C. Mr. Svetanoff is a 1994 graduate of Butler University with a B.S. in Marketing, and a 2002 graduate of Valparaiso University School of Law. He currently serves as a criminal public defender with Lake County Superior Court, County Division, Room I.

Mr. Svetanoff was appointed to the Commission in February 2014.

# THE INDIANA GAMING COMMISSION

## Mike Herndon



**Mike Herndon**, of Shelbyville, recently retired as the Director of Insurance Fraud Investigations in the Enforcement Division of the Indiana Department of Insurance. Mr. Herndon was elected to serve as Sheriff of Shelby County, Indiana, for two terms. Also, he served in the Indiana House of Representatives from 2001 to 2002. Mike attended Indiana University and Herron Art Institute from 1969 to 1972 and is a graduate of the Indiana Law Enforcement Academy and the FBI National Academy.

Mr. Herndon was appointed to the Commission in October 2014.

## Richard McClain



**Richard McClain**, of Logansport, is a former member of the Indiana House of Representatives, representing District 24 from 1994-2012. Prior to working at the Statehouse, he was a Township Trustee and Logansport City Engineer. Mr. McClain has also worked in a variety of positions in the private sector, including being a successful self-employed inventor. Mr. McClain is a graduate of Purdue University.

Mr. McClain was appointed to the Commission in November 2015.

## Jane Saxon, CPA



**Jane Saxon**, of Noblesville, is a senior manager at Somerset CPAs and Advisors. She is a graduate of the IUPUI Kelley School of Business and holds a B.S. in Accounting. Ms. Saxon is active in her community and has served several not-for-profit organizations. Most recently, Ms. Saxon served as the treasurer for the Noblesville Boys and Girls Club Auxiliary, whose mission is to support the Boys and Girls Club of Noblesville both financially and through volunteer efforts.

Ms. Saxon was appointed to the Commission in September 2016.



**Indiana Gaming Commission**



## Executive Director's Annual Report



Sara Gonso Tait  
*Executive Director*

On the heels of a year focused on significant changes in Indiana's casino ownership, FY 19 was a year that brought many more opportunities for growth in the industry.

### Legislation

Big changes were approved by the Indiana General Assembly in 2019, including approval of sports wagering, provisions allowing the relocation of a casino within the City of Gary, and the creation of a new casino opportunity in Vigo County. Highlights of House Enrolled Act 1015 are as follows:

- *Sports Wagering*
  - o Authorizes sports wagering at riverboats, horse tracks/racinos, a Vigo County casino, OTB facilities (collectively “certificate holders”) and mobile.
  - o Allows sports wagering after September 1, 2019, with submission of applications to the IGC beginning July 1, 2019.
  - o Assesses initial fee of \$100,000 for applications for certificate holders and vendors, with sports wagering service providers paying a one-time \$10,000 fee. There is a \$50,000 annual renewal fee for all certificate holders and vendors that also goes to Sports Wagering Fund.
  - o Allows certificate holders to contract with up to 3 “skins” for mobile.
  - o Allows certificate holders to contract with vendors for both retail and mobile.
  - o Must be 21 years old and over to wager.
  - o May register in-person or online to open an account.
  - o Prohibits betting on high school or youth sporting events.
  - o In-play wagering is specifically permitted.
  - o Prohibits wagering on e-sports.
  - o Establishes a 9.5% flat tax rate.
- *Gary*
  - o Authorizes the holder of the Gary riverboat licenses to relocate the gaming facility inland within Gary

city limits.

- o Request to do so must be made to the IGC, with approval from the City of Gary, before December 31, 2019.
- o Fee of \$20M, payable in \$4M installments over 5 years.
- o If the relocation request is approved by the IGC, one of the Gary licenses must be relinquished.
- o If the Gary facility is sold within 5 years of relocation, a \$20M transfer fee will be assessed.
- *Vigo County*
  - o If a Gary license is relinquished, a license will be created for Vigo County.
  - o It must be approved by Vigo County residents via local referendum. The IGC would accept and review applications and proposals for the Vigo County facility. Factors to be considered in awarding of license are listed in the bill.
  - o Assesses a \$5M fee for license.
  - o Requires operator to enter into local development agreement.
  - o Supplemental wagering taxes to go to Terre Haute, Vigo County, Vigo County School Corporation and West Central 2025.
- *Hold Harmless Payments*
  - o Evansville to receive 3 annual payments in the amounts of \$1.2M, \$900K and \$600K from Vigo County casino.
  - o Provides payments from Gary to East Chicago, Hammond and Michigan City based upon a formula for 4 fiscal years.
- *License Limits* - The bill removes the current “2 boat rule” and caps the number of licenses an operator may own at 6. This applies to both IC 4-33 and IC 4-35 licenses.
- *Table Games at Racinos* - The bill allows live table games at racinos January 1, 2020.
- *Riverboat and Racino Tax*
  - o Increases free play to \$9M July 1, 2021.
  - o Lowers lowest progressive tax rate for riverboat operators making more than \$75M AGR July 1, 2021 from 15% to 10%.
  - o Lowers several progressive rates for riverboat operators making less than \$75M ARG July 1, 2021 as follows – 5% to 2.5%, 20% to 10% and 25% to 20%.
  - o Lowers racino rate to 30% over \$100M July 1, 2021.

#### Staff Update

Many talented individuals saw the opportunity for advancement to leadership positions at the IGC in 2019. After 33 years of state service, Debbie Baumann, as key employee in the Charity Gaming Division, retired. As a result, Kim Barnett was promoted to the new position of Director of Operations of that division. Dennis Mullen was promoted from Deputy General Counsel to Director of Sports Wagering and Paid Fantasy Sports. Staff Attorney Dustin Moloy was named Deputy General Counsel. Bo Liu was recruited from another agency to take on the role of Assistant Controller and Billy Quist was promoted from Field Auditor to Assistant Director of Audit.

#### Revenues

Total state-wide win declined by \$29.2 million from FY 18 to \$2,212,515,896, a 1.3% decrease. The Supplemental Wagering Tax replaced Admissions Tax in FY 19. The Supplemental Taxes were lower than the Admissions Taxes it replaced by approximately \$0.6 million, or 1.4%. Wagering taxes decreased in line with win

by approximately 2.0%. Combined taxes totaled \$590,755,197 in FY19. This is a decrease of approximately \$11.6 million from FY18, or about 1.9%.

### Casino Investments

Several Indiana casinos pursued significant improvements in FY19. Horseshoe Southern Indiana continued to work toward completion of its new \$85 million land-based casino. French Lick began construction of a six-floor, 71-room hotel tower costing \$18.6 million and an adjoining \$1.8 million sports bar. An existing structure on the French Lick property was also converted into a 32,000 square foot exhibition hall at an expense of \$1.2M. Blue Chip began construction on an \$11 million, 11,000 square foot addition to its meeting space, plus 3,800 in additional pre-meeting space. Harrah's Hoosier Park opened a new Diamond Lounge and Hollywood opened a new restaurant concept called The Eatery.

### Looking Ahead

The successful launch of both retail and mobile sports wagering in Indiana will be first on the IGC's agenda in FY 20. The Gary casino move and a competitive application process for a new casino in Vigo County will also be important issues considered by the Commission in the coming year, as will the opening of the new land-based casino in Harrison County and introduction of table games at Indiana Grand and Hoosier Park. Staff looks forward to continuing to meet the challenges of regulating the industry and continuing to see the economic benefits of gaming in Indiana.

Respectfully submitted,



**Sara Gonso Tait**  
**Executive Director**





**Indiana Gaming Commission**



## FY 2019 TAX OVERVIEW

In FY 2019, gaming operations at Indiana casinos generated **\$545,477,149** in wagering tax and **\$45,278,048** in supplemental wagering tax, for a total of **\$590,755,197**. As of June 30, 2019, **\$14,901,750,956** in Wagering and Supplemental Wagering Tax had been reported since inception. For more information on wagering and supplemental wagering taxes and how they are distributed, please visit the State Budget Agency website at: [www.in.gov/sba/2511.htm](http://www.in.gov/sba/2511.htm).

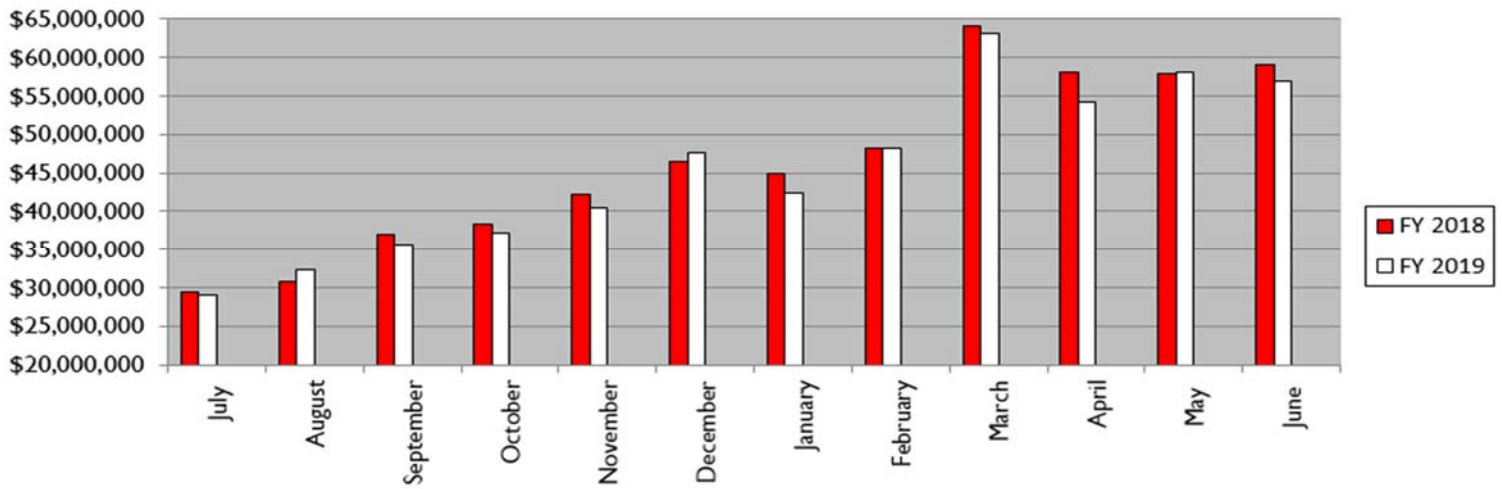
<b><u>FY 2019</u></b>	<b><u>Total Win</u></b>	<b><u>Wagering Tax</u></b>	<b><u>Supplemental Wagering Tax</u></b>	<b><u>Total Tax</u></b>
Ameristar	226,733,852	59,011,107	6,682,146	65,693,253
Belterra	108,399,765	25,069,435	3,246,562	28,315,997
Blue Chip	153,530,104	36,438,258	5,858,435	42,296,693
French Lick	97,040,031	19,530,329	N/A	19,530,329
Hollywood	170,182,011	42,125,901	4,292,603	46,418,504
Hoosier Park	213,958,966	51,523,250	N/A	51,523,250
Horseshoe Hammond	386,704,714	118,063,821	9,846,723	127,910,544
Horseshoe Southern	222,796,718	60,779,859	4,936,514	65,716,373
Indiana Grand	285,257,802	68,597,112	N/A	68,597,112
Majestic Star	89,120,898	16,877,319	2,421,480	19,298,799
Majestic Star II	61,374,238	7,589,515	2,214,323	9,803,838
Rising Star	48,449,827	4,767,551	1,703,510	6,471,061
Tropicana Evansville	148,966,970	35,103,692	4,075,753	39,179,445
<b>TOTALS</b>	<b>\$2,212,515,896</b>	<b>\$545,477,149</b>	<b>\$45,278,048</b>	<b>\$590,755,197</b>

# FY 2018 TAX COMPARISON TO FY 2019

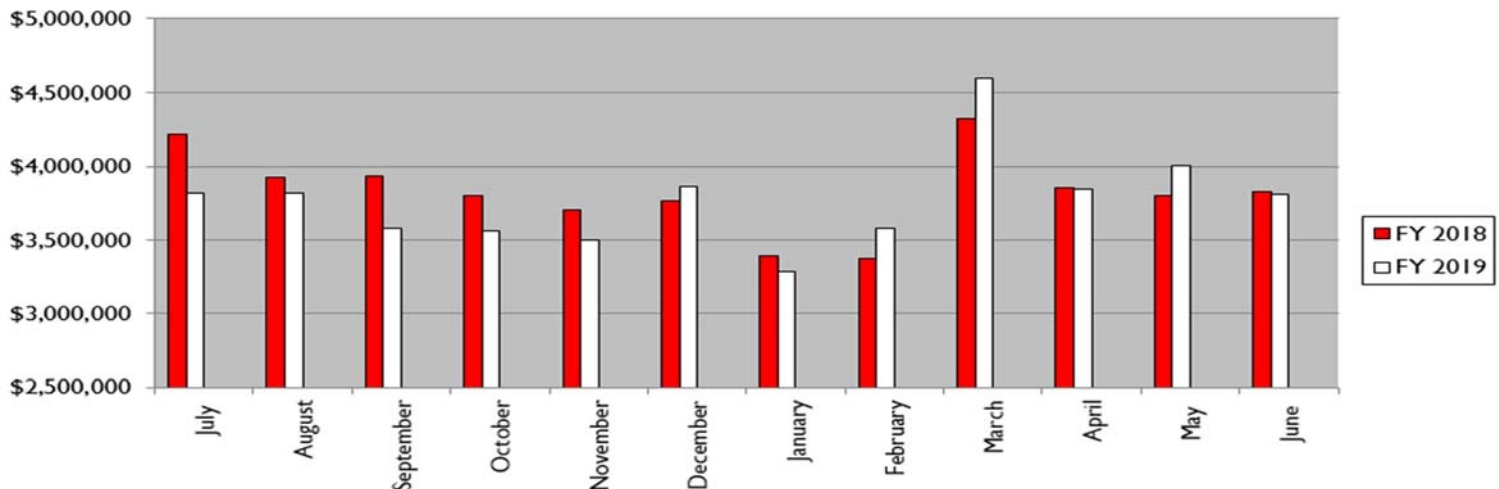
WAGERING TAX	FY 2018	FY 2019	DIFFERENCE	%
July	29,351,022	29,106,572	(244,450)	-0.83%
August	30,683,684	32,289,958	1,606,274	5.23%
September	36,945,942	35,629,196	(1,316,746)	-3.56%
October	38,426,073	37,235,392	(1,190,681)	-3.10%
November	42,168,444	40,476,298	(1,692,146)	-4.01%
December	46,410,580	47,682,420	1,271,840	2.74%
January	45,004,730	42,382,276	(2,622,454)	-5.83%
February	48,173,656	48,291,652	117,996	0.24%
March	64,190,339	63,088,819	(1,101,520)	-1.72%
April	58,097,474	54,252,108	(3,845,366)	-6.62%
May	57,948,225	58,153,126	204,901	0.35%
June	59,066,143	56,889,332	(2,176,811)	-3.69%
<b>TOTAL</b>	<b>\$556,466,312</b>	<b>\$545,477,149</b>	<b>(\$10,989,163)</b>	<b>-1.97%</b>

	Admissions Tax FY 2018	Supplemental Wagering Tax FY 2019	DIFFERENCE	%
July	4,220,889	3,821,278	(399,611)	-9.47%
August	3,929,907	3,816,790	(113,117)	-2.88%
September	3,936,834	3,586,308	(350,526)	-8.90%
October	3,802,883	3,562,127	(240,756)	-6.33%
November	3,702,824	3,506,005	(196,819)	-5.32%
December	3,765,274	3,861,742	96,468	2.56%
January	3,388,534	3,284,850	(103,684)	-3.06%
February	3,373,991	3,579,669	205,678	6.10%
March	4,324,546	4,594,485	269,939	6.24%
April	3,859,724	3,845,204	(14,520)	-0.38%
May	3,805,981	4,004,109	198,128	5.21%
June	3,832,237	3,815,482	(16,755)	-0.44%
<b>TOTAL</b>	<b>\$45,943,623</b>	<b>\$45,278,049</b>	<b>(\$665,574)</b>	<b>-1.45%</b>

## WAGERING TAX COMPARISON FY 2018 TO FY 2019



## FY2018 ADMISSION TAX COMPARISON TO FY2019 SUPPLEMENTAL WAGERING TAX



# REVENUES & EXPENDITURES

<b>FEES</b>	<b>\$62,242,386</b>	<b>FINES</b>	<b>\$2,050,214</b>
<u>Occupational Licensing</u>		Riverboats	\$1,886,098
Applications	\$606,374	Suppliers	\$73,000
Permanent/Renewal	\$482,971	Voluntary Exclusion Program (V.E.P.)	\$91,116
<b>Subtotal</b>	<b>\$1,089,345</b>		
 		<b>EXPENDITURES</b>	<b>\$27,326,971</b>
<u>Casino Licensing</u>		<u>IGC Administration</u>	
Applications for merger/buyout	\$150,000	Salary/Wages	\$2,878,251
Permanent/Renewal	\$447,700	Other Operating & Encumbrance	\$488,186
Other - License Transfer	\$56,000,000	Less Reimbursements	-\$16,207
<b>Subtotal</b>	<b>\$56,597,700</b>	<b>Subtotal</b>	<b>\$3,350,230</b>
 		<u>Charity Gaming Enforcement</u>	
<u>Supplier Licensing</u>		Salary/Wages	\$2,898,918
Applications:	\$35,000	Build Indiana	\$1,850,000
Permanent/Renewal:	\$217,850	Other Operating & Encumbrance	\$505,910
Other - Junketeer:	\$9,900	<b>Subtotal</b>	<b>\$5,254,828</b>
<b>Subtotal</b>	<b>\$262,750</b>		
 		<u>Athletic Division</u>	
<u>Charity Gaming*</u>		Salary/Wages	\$149,174
Licensing	\$4,164,442	Other Operating & Encumbrance	\$10,839
Penalties/Misc.	\$31,199	Less Reimbursements	-\$7,027
<b>Subtotal</b>	<b>\$4,195,641</b>	<b>Subtotal</b>	<b>\$152,986</b>
 		<u>Gaming Enforcement**</u>	
<u>Athletic Division</u>		Salary/Wages	\$17,676,402
Licensing	\$38,605	Other Operating & Encumbrance	\$892,525
Closed Circuit Tax	\$0	<b>Subtotal</b>	<b>\$18,568,927</b>
Event Tax	\$28,345		
Penalties	\$0		
<b>Subtotal</b>	<b>\$66,950</b>		
<u>Fantasy Sports</u>			
Applications	\$0		
Renewal	\$30,000		
<b>Subtotal</b>	<b>\$30,000</b>		

\*Does not include Charity Gaming Excise Tax of \$1,206,065 collected by IDOR.

\*\*Fully reimbursed by riverboat casinos and racinos.

# MBE/WBE UTILIZATION

## Disparity Study

Statute requires the IGC to establish annual goals for the use of minority and women-owned enterprises (M/WBE). These goals must be derived from a statistical analysis of utilization study of casino contracting and purchases. Such an analysis, also called a disparity study, must be updated every five years.

In keeping with its statutory mandate, an update of the IGC’s study was completed in November 2017. The Indiana University Public Policy Institute completed the study on our behalf, examining the contracting and purchasing practices of Indiana’s casinos from 2012 through 2017. Based upon actual purchase data provided by the casinos and audited by IGC staff, the study period reviewed over \$1.7 billion in spending on goods and services.

In addition to a review of purchasing, also called utilization, a disparity study must also seek to establish capacity, which is a measure of all firms ready, willing and able to provide goods and services to Indiana’s river-boat casinos. The capacity estimate derived from the study is below.

<u>Capacity Estimates</u>	<u>MBE</u>	<u>WBE</u>
<b>Construction</b>	10.7%	9.7%
<b>Procurement of Supplies</b>	1.7%	3.7%
<b>Professional Services</b>	3.5%	6.5%
<b>Other Services</b>	2.2%	6.4%

The IGC adopted the study at its November meeting in Resolution 2017-219 and will continue to monitor M/WBE utilization annually. The full disparity study is available at [www.in.gov/igc](http://www.in.gov/igc).

## 2018 Expenditures

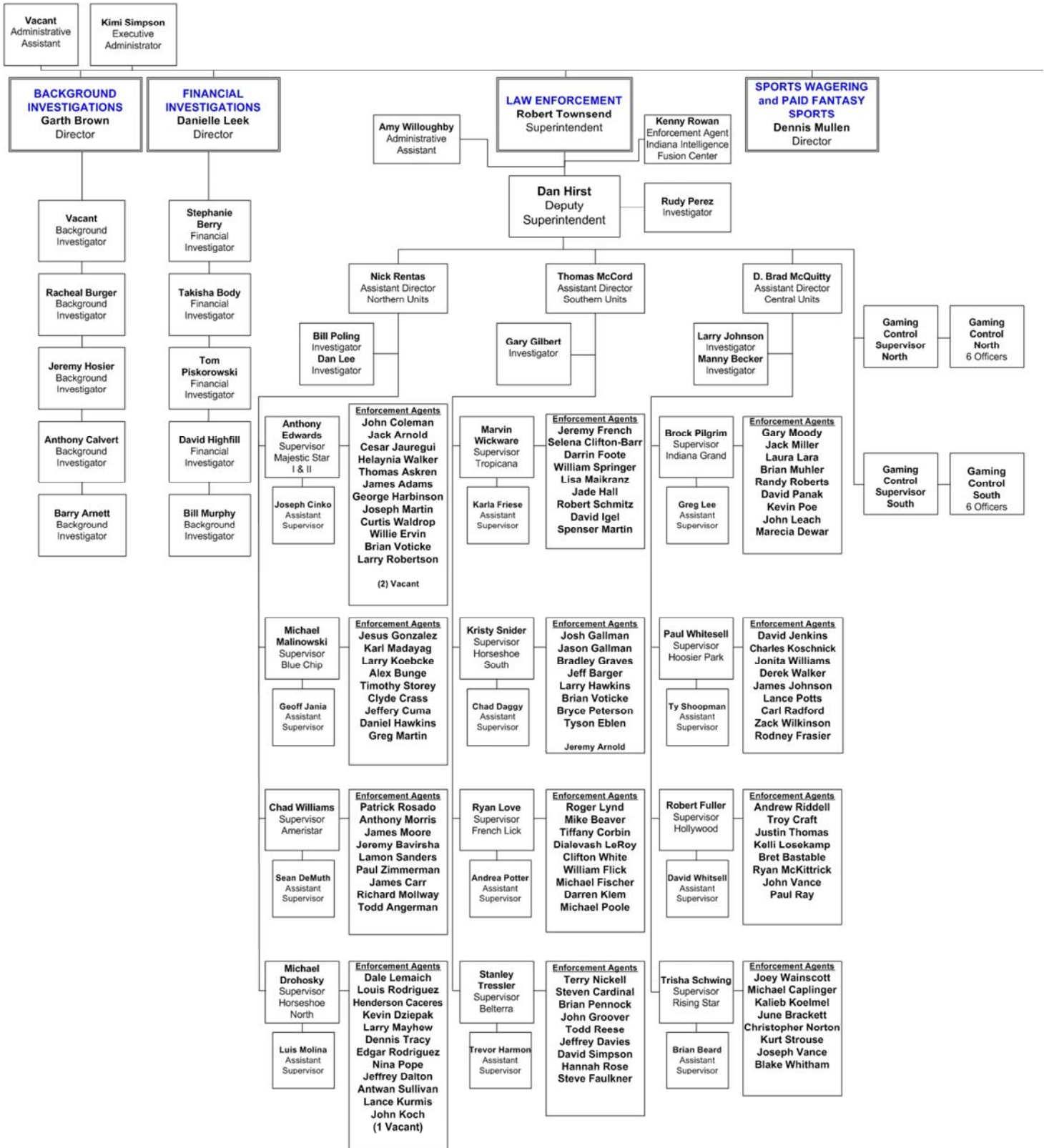
The table below indicates spending in each category in CY 2018. Not reflected in the chart, but of importance to note, is that casinos spent \$122.4 million with Indiana firms, including non-M/WBE, during this period.

<u>Purchase Type</u>	<u>Amount</u>	<u>MBE Spend</u>	<u>WBE Spend</u>
Construction	\$42,439,740.03	33.68%	7.84%
Procurement	\$207,314,242.20	8.57%	9.58%
Professional Services	\$30,331,662.75	12.42%	6.68%
Non-Professional Services	\$59,715,547.56	6.01%	9.94%
<b><u>TOTAL</u></b>	<b>\$339,801,192.54</b>		

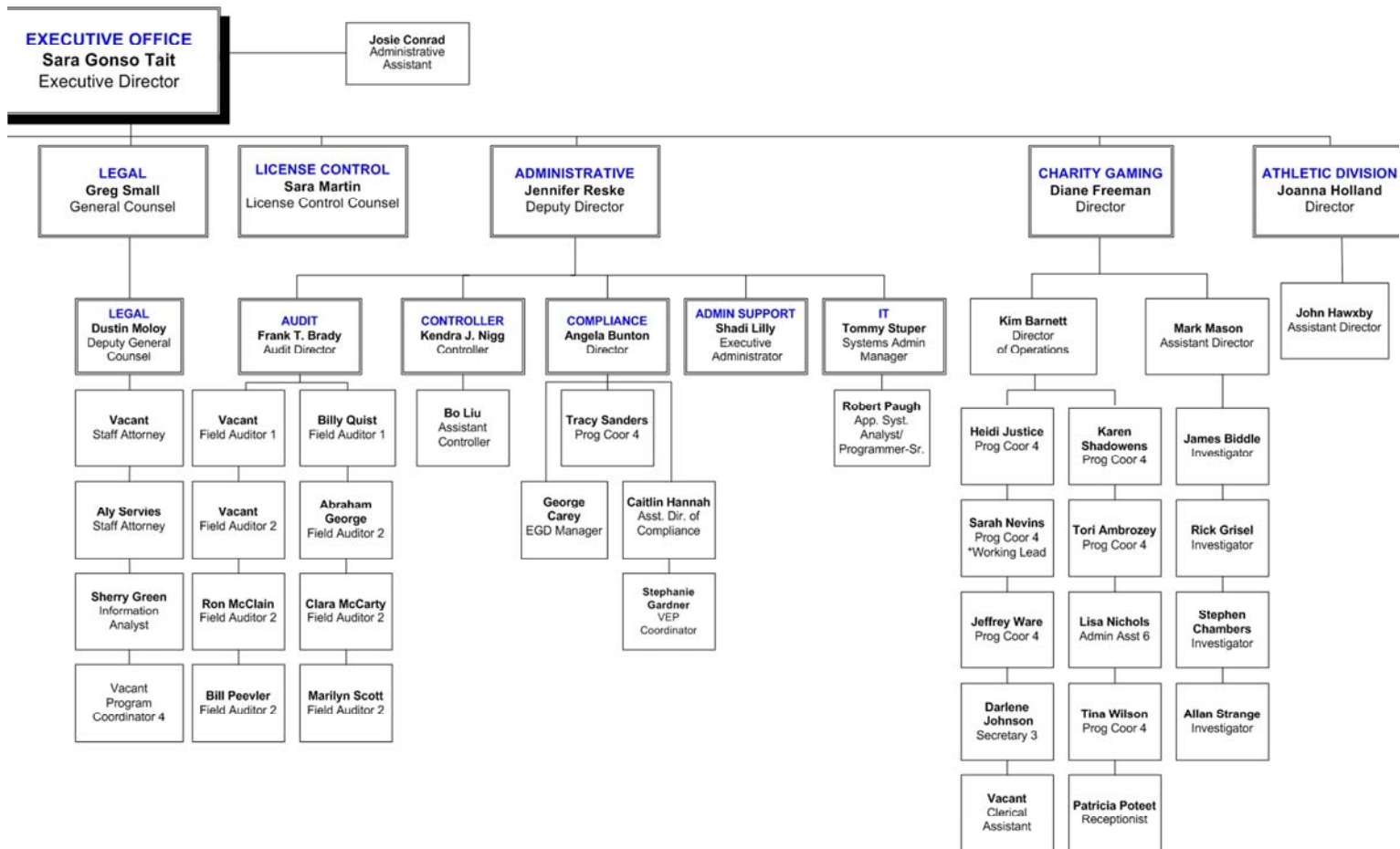


Jennifer Reske  
Deputy Director

# ORGANIZATIONAL CHART



# ORGANIZATIONAL CHART



As of: June, 2019



# Divisions





# DIVISION STATISTICS

## LEGAL DIVISION

### Occupational Licensing

Temporary Licenses Issued	4,019
Permanent Licenses Issued	3,265
License Renewals	9,842
Permanent License Revocations	1
Application Denials	34
Felony Waivers	1
Felony Waivers Granted	0
Settlements in Lieu of Disciplinary Action	15

### Supplier Licensing

Supplier License Inquiries Reviewed	27
Permanent Supplier License Granted	3
Renewal of Supplier License	24
Temporary Supplier License Granted	5
Expired Supplier Licenses	0

### Junket Registration

Junket Operator Certificates Issued	2
Junketeer Certificates Issued	2
Total Registered Junket Operators	24
Total Registered Junketeers	26

### Exclusion Statistics

Patrons Excluded	82
Exclusion Appeals	4
Removals from Exclusion List	4
Actions For Civil Penalty	0
Civil Penalty Collected	\$0
Currently on Exclusion List	813

### Record Requests Statistics

Public Record Requests Received	72
Number of Records Request Documents Released	1,095

## CHARITY GAMING DIVISION

### Charity Gaming \*

Licenses Issued	3,021
Non-Licensed Events	2,423
Affiliate Events	164
Qualified Organizations	4,237
Qualified Distributors	30
Qualified Manufactures	20
Compliance Investigations Conducted	176
Gross Income Reported	\$436,980,682
Licensing Fees Collected	\$4,164,442
Prize Payouts	\$341,741,735
Penalties	\$31,199

## COMPLIANCE DIVISION

### Table Games

New Table Games Reviewed	8
New Table Games Approved	2
New Table Games Pending	8
Table Shipments Approved	195
Layout Schematics Approved	144

### Promotions / Tournaments

Received	2,504
Reviewed	2,036
Approved	468
Disapproved	0
Pending	0

*The Commission issued 227 recommendations on waiver requests and disciplinary actions against casino and supplier licensees with \$868,000 levied in fines.*

## ENFORCEMENT DIVISION

### Enforcement

Regulatory Investigation	3,173
Criminal Investigations	2,150
Individuals Charged	735

## GAMING CONTROL DIVISION

### Illegal Gambling

Criminal Investigations	128
Inspections Conducted	4,315
Illegal Gambling Devices Confiscated	22

## BACKGROUND/FINANCIAL INVESTIGATIONS DIVISION

### Investigations

Level 1 Investigations	263
Level 2 Investigations	3,628
Level 3 Investigations	2,235

*9,942 hours were logged and the division maintained a billable rate of 71%.*

## ATHLETIC DIVISION

### Boxing

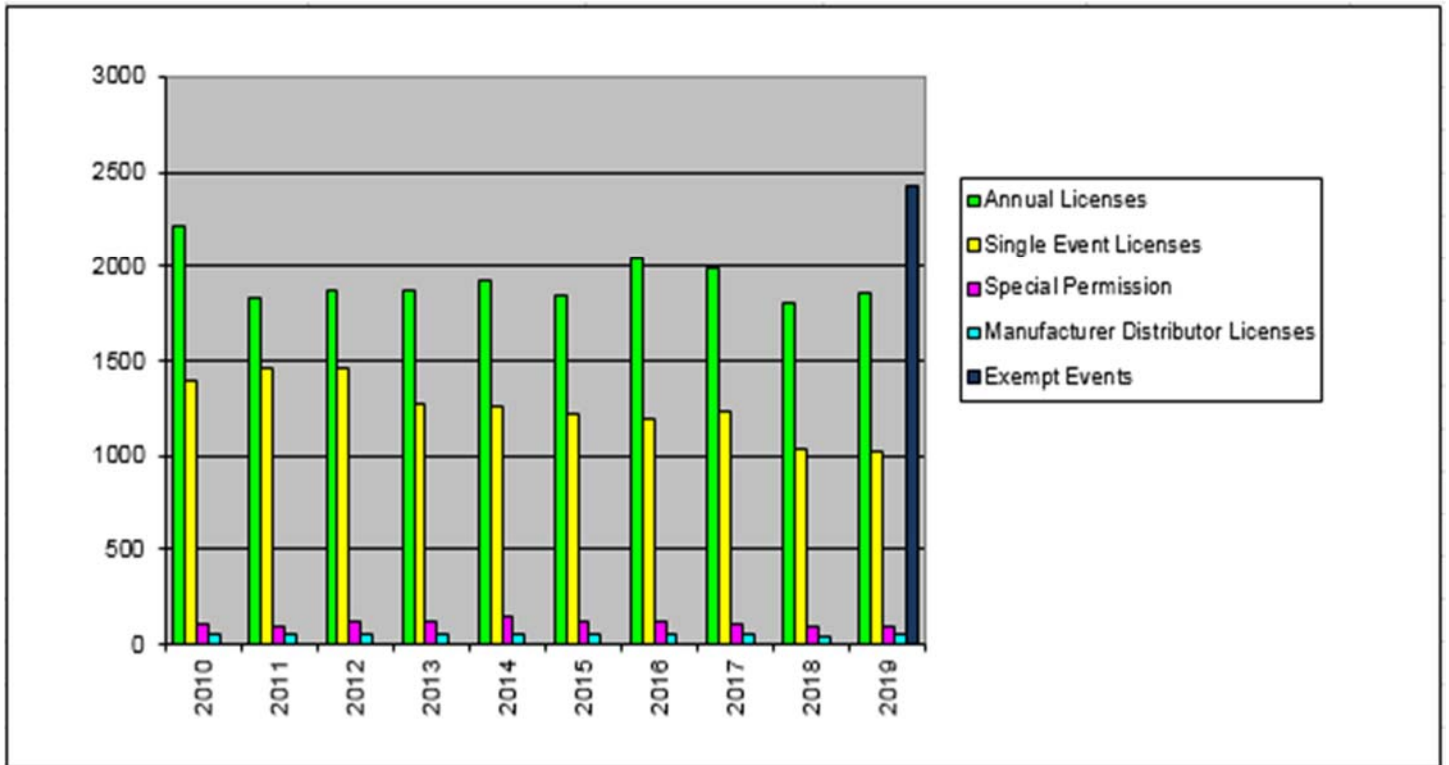
Judges Issued	14
Managers Issued	5
Promoters Issued	7
Referees Issued	5
Seconds Issued	194
Timekeepers Issued	5
Trainers Issued	6
Professional Boxers Issued	150
Professional Boxing Events	17

### Mixed Martial Arts

Amateur MMA Sanctioning Bodies Issued	1
Judges Issued	12
Managers Issued	0
Matchmaker	0
Promoters Issued	4
Referees Issued	5
Seconds Issued	118
Timekeepers Issued	6
Trainers Issued	2
Professional Mixed martial Artists	61
Event Physicians Issued	6
MMA National ID's Issued	85
Mixed Martial Arts Pro-Am Events	8
Mixed Martial Arts Amateur Events	2

\* These statistics will change as not all financial reports have been received and processed for this period.

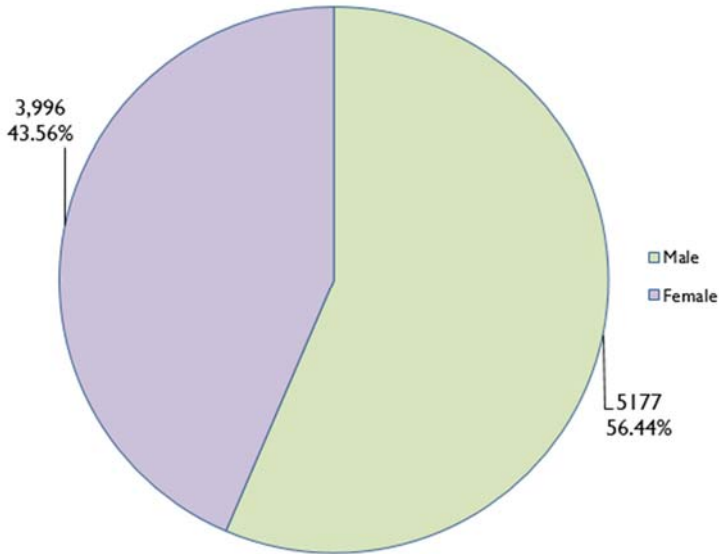
# Figure 1. Charity Gaming Licenses Issued



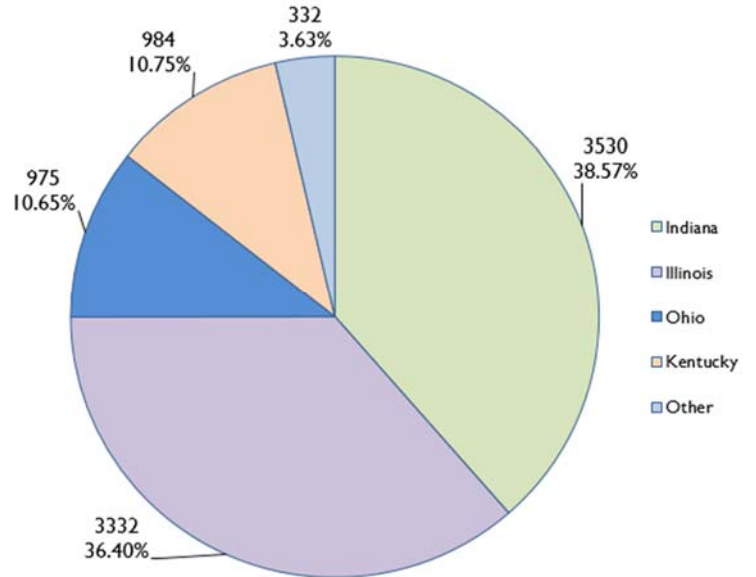
## VEP Statistics

There were **5,884** active members from thirty-eight different states and two from Canada in the Voluntary Exclusion Program as of July 1, 2019. The graphs below display the program participants, as categorized by age, gender, home state and length of exclusion. In FY 2019, 79 forfeitures were approved by the Commission and resulted in approximately \$154,718.08 in forfeitures.

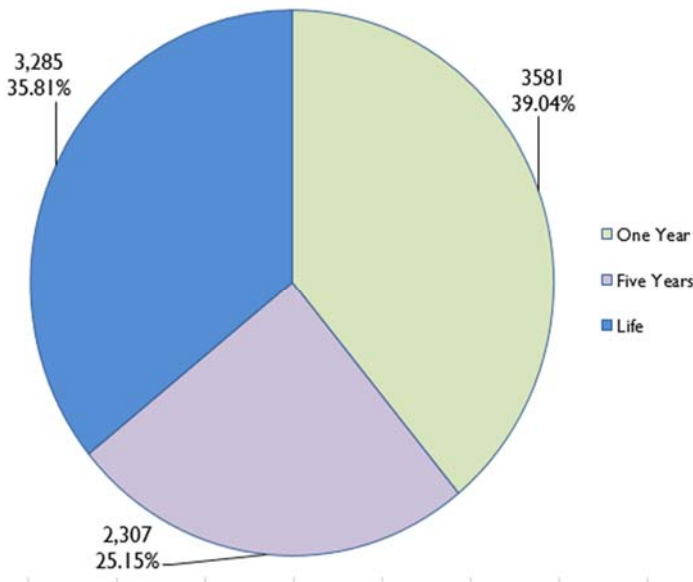
### Member Gender



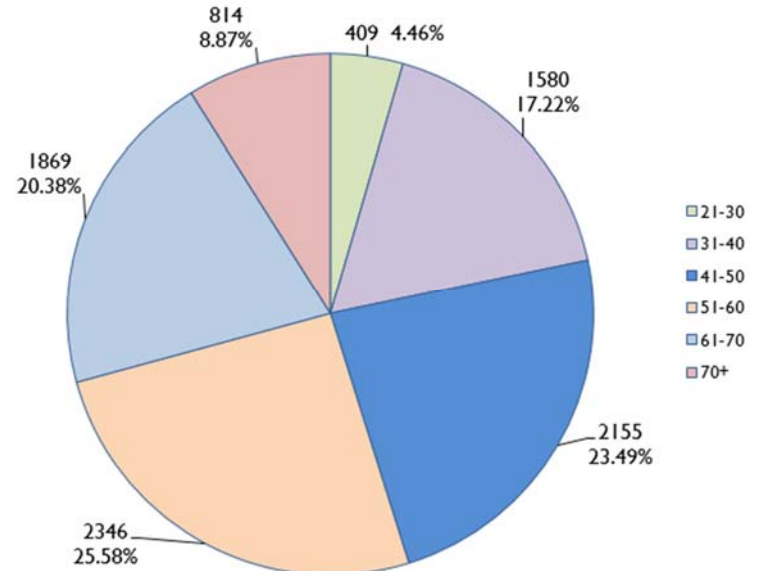
### Member State



### Member Exclusion Length



### Member Age





# Indiana Casinos



# INDIANA CASINO LOCATIONS



## Indiana Casino Locations



# AMERISTAR CASINO



**General Manager:**  
Matthew Schuffert

**Address:**  
777 Ameristar Blvd.  
East Chicago, Indiana 46312

**Website:**  
[www.ameristar.com/east\\_chicago.aspx](http://www.ameristar.com/east_chicago.aspx)



Date Opened: April 18, 1997

Gaming Space: 68,492 Square Feet

Electronic Gaming Devices: 1,748

Table Gaming Positions: 603

Restaurants: 5

Hotel: 290 Rooms

Total Taxes: \$65,693,253

LDA Payments: \$7,467,269

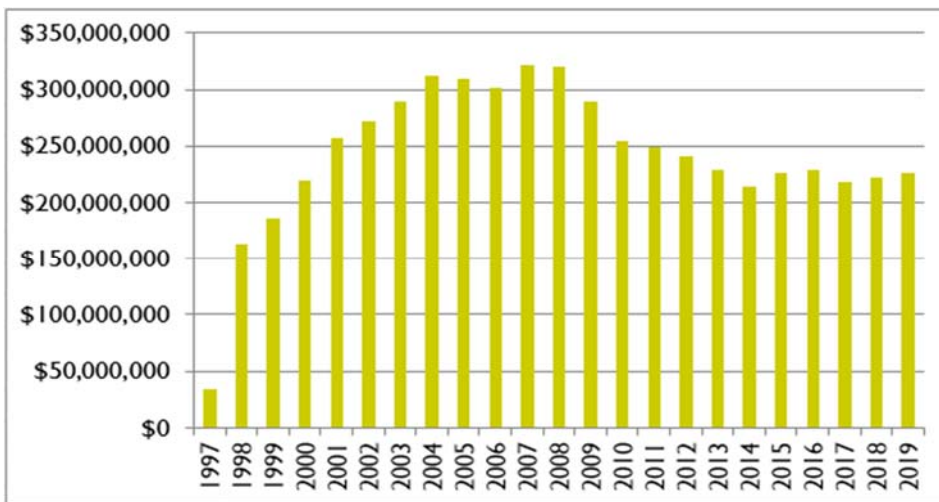
Total Employment: 1,242

Minority Employment: 69.89%

County Employment: 72.87%

Indiana Employment: 82.37%

## Yearly Win Totals



# BELTERRA CASINO



**General Manager:**

Peter Chu

**Address:**

777 Belterra Dr.  
Florence, Indiana 47020

**Website:**

[www.belterracasino.com](http://www.belterracasino.com)



Date Opened: October 27, 2000

Gaming Space: 47,000 Square Feet

Electronic Gaming Devices: 1,165

Table Gaming Positions: 291

Restaurants: 6

Hotel: 608 rooms

Total Taxes: \$28,315,997

LDA Payments: \$1,183, 774

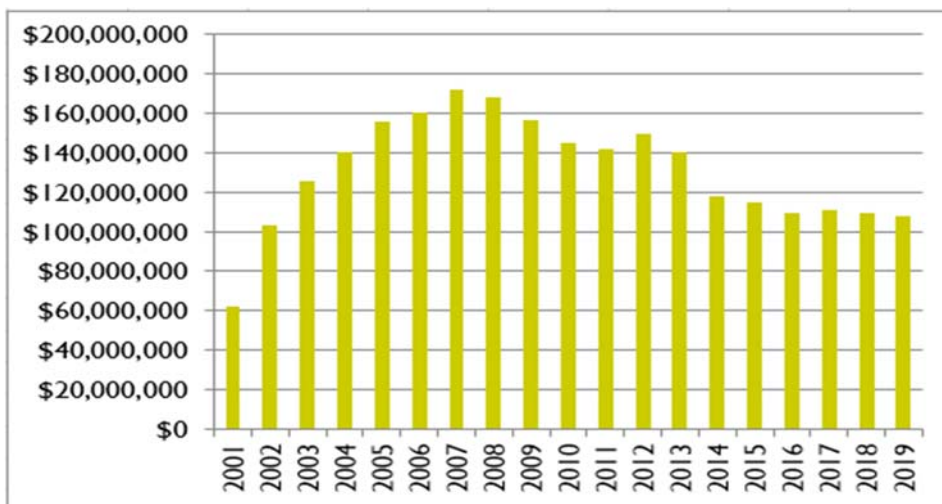
Total Employment: 884

Minority Employment: 11.76%

County Employment: 52.60%

Indiana Employment: 35.07%

## Yearly Win Totals



# BLUE CHIP CASINO



**General Manager:**

Brenda Temple

**Address:**

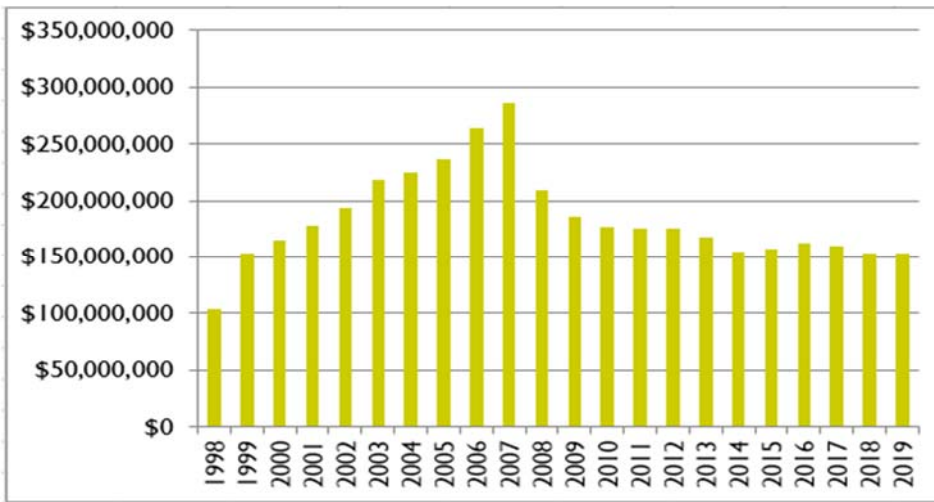
777 Blue Chip Drive  
Michigan City, Indiana 46360

**Website:**

[www.bluechipcasino.com](http://www.bluechipcasino.com)



## Yearly Win Totals



Date Opened: April 18, 1997

Gaming Space: 65,375 Square Feet

Electronic Gaming Devices: 1,669

Table Gaming Positions: 401

Restaurants: 6

Hotel: 486 rooms

Total Taxes: \$42,296,693

LDA Payments: \$1,145,695

Total Employment: 970

Minority Employment: 34.70%

County Employment: 62.60%

Indiana Employment: 96.00%



# FRENCH LICK RESORT CASINO



**General Manager:**

Chris Leininger

**Address:**

8670 West State Road 56  
French Lick, Indiana 47432

**Website:**

[www.frenchlick.com/gaming](http://www.frenchlick.com/gaming)



Date Opened: November 1, 2006

Gaming Space: 49,719 Square Feet

Electronic Gaming Devices: 855

Table Gaming Positions: 279

Restaurants: 13

Hotel: 686 rooms

Total Taxes: \$19,530,329

LDA Payments: \$2,644,323

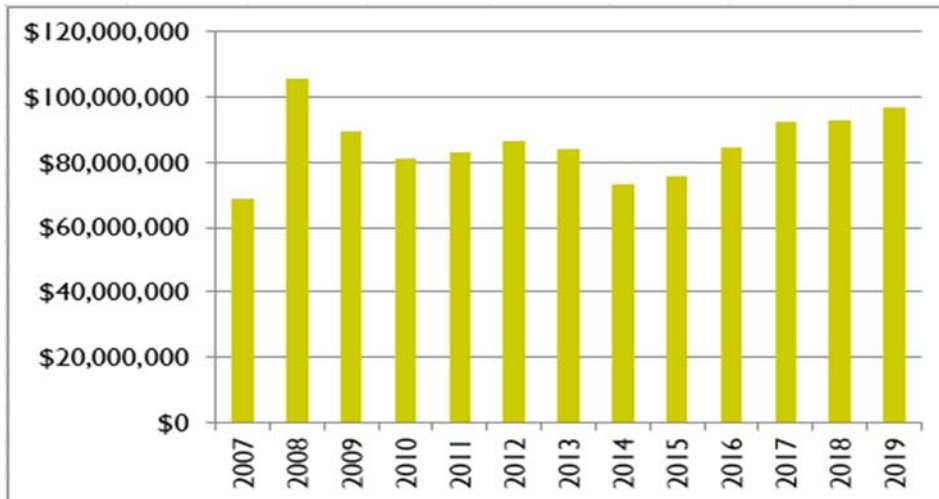
Total Employment: 1,657

Minority Employment: 9.00%

County Employment: 67.00%

Indiana Employment: 99.00%

## Yearly Win Totals



# TROPICANA EVANSVILLE



**General Manager:**

John Chaszar

**Address:**

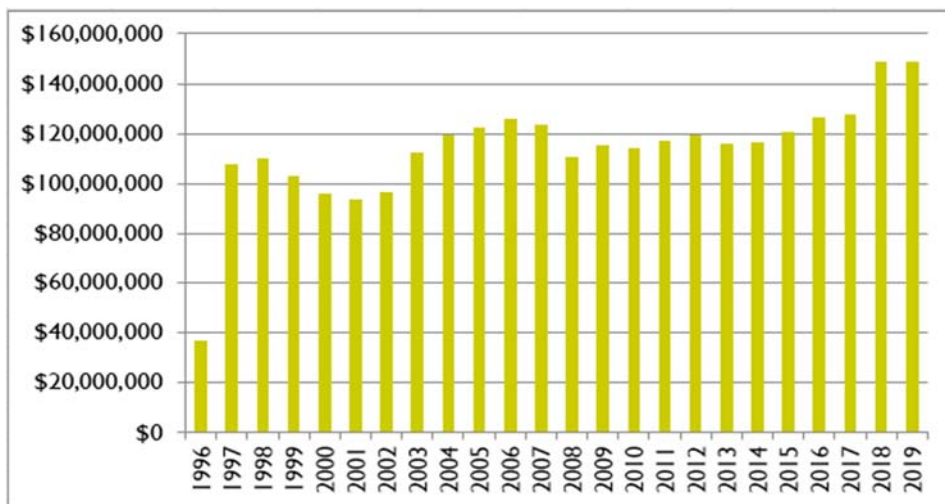
421 N.W. Riverside Drive  
Evansville, Indiana 47708

**Website:**

[www.tropevansville.com](http://www.tropevansville.com)



## Yearly Win Totals



Date Opened: December 8, 1995

Gaming Space: 40,724 Square Feet

Electronic Gaming Devices: 1,118

Table Gaming Positions: 316

Restaurants: 4

Hotel: 339 rooms

Total Taxes: \$39,179,445

LDA Payments: \$6,794,405

Total Employment: 780

Minority Employment: 16.79%

County Employment: 71.41%

Indiana Employment: 88.33%

# HOLLYWOOD CASINO



**General Manager:**

Rodney Centers

**Address:**

777 Hollywood Blvd.  
Lawrenceburg, Indiana 47025

**Website:**

[www.hollywoodindiana.com](http://www.hollywoodindiana.com)



Date Opened: December 13, 1996

Gaming Space: 155,000 Square Feet

Electronic Gaming Devices: 1,550

Table Gaming Positions: 578

Restaurants: 6

Hotel: 300 rooms

Total Taxes: \$46,418,504

LDA Payments: \$8,856,639

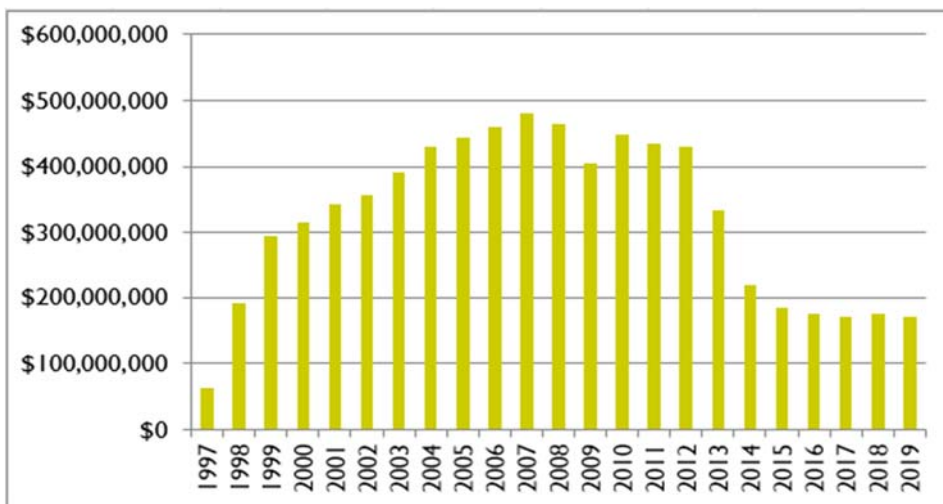
Total Employment: 839

Minority Employment: 5.80%

County Employment: 46.20%

Indiana Employment: 60.90%

## Yearly Win Totals



# HARRAH'S HOOSIER PARK CASINO



**General Manager:**

Trent McIntosh

**Address:**

4500 Dan Patch Circle  
Anderson, Indiana 46013

**Website:**

[www.hoosierpark.com](http://www.hoosierpark.com)



Date Opened: May 29, 2008

Gaming Space: 54,000 Square Feet

Electronic Gaming Devices: 1,582

Table Gaming Positions: N/A

Restaurants: 7

Hotel: N/A

Total Taxes: \$51,523,250

LDA Payments: N/A

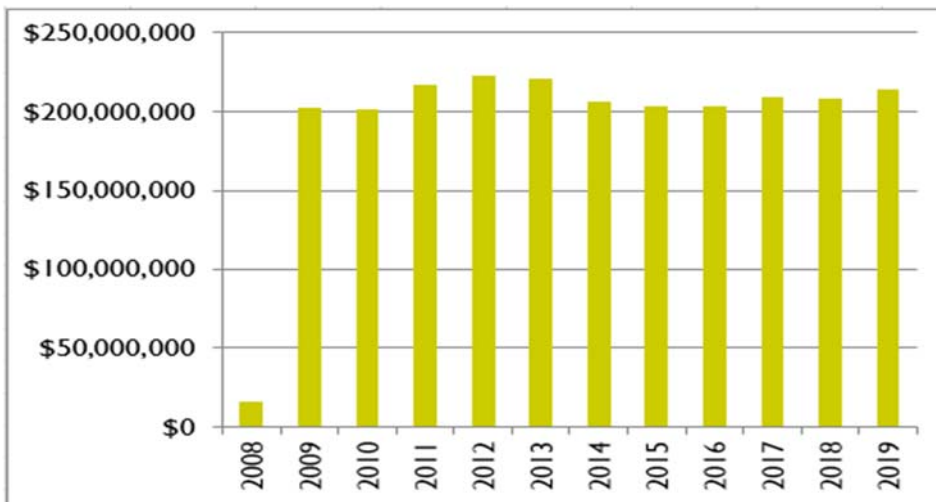
Total Employment: 795

Minority Employment: 22.00%

County Employment: 66.00%

Indiana Employment: 99.00%

## Yearly Win Totals



# HORSESHOE CASINO HAMMOND



**General Manager:**

Dan Nita

**Address:**

777 Casino Center Dr.  
Hammond, Indiana 46320

**Website:**

[www.horseshoehammond.com](http://www.horseshoehammond.com)

Date Opened: June 29, 1996

Gaming Space: 108,000 Square Feet

Electronic Gaming Devices: 2,173

Table Gaming Positions: 1,117

Restaurants: 7

Hotel: N/A

Total Taxes: \$127,910,544

LDA Payments: \$24,213,621

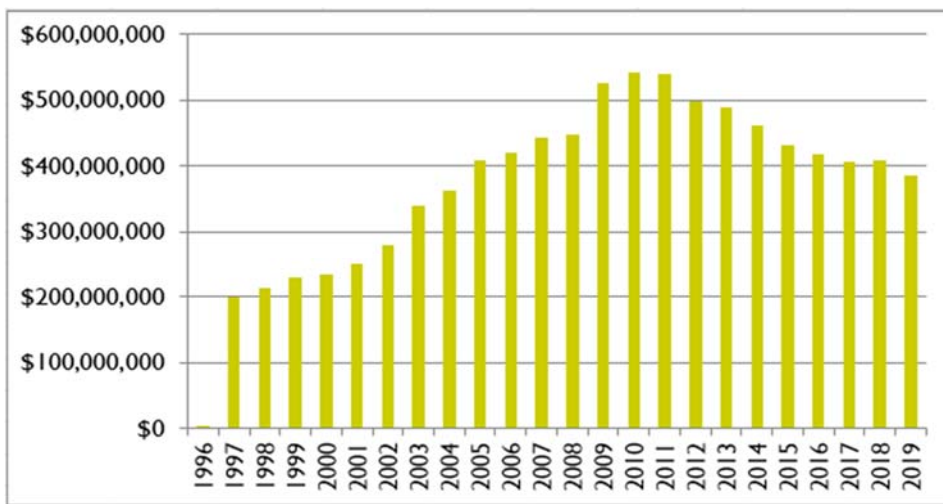
Total Employment: 1,835

Minority Employment: 64.50%

County Employment: 64.30%

Indiana Employment: 70.20%

## Yearly Win Totals



# HORSESHOE CASINO SOUTHERN



**HORSESHOE**  
CASINO • HOTEL

**General Manager:**

Bradley Seigel

**Address:**

11999 Casino Center Dr. S.E.  
Elizabeth, Indiana 47117

**Website:**

[www.horseshoe-indiana.com](http://www.horseshoe-indiana.com)



Date Opened: November 20, 1996

Gaming Space: 86,600 Square Feet

Electronic Gaming Devices: 1,579

Table Gaming Positions: 738

Restaurants: 7

Hotel: 503 Rooms

Total Taxes: \$65,716,373

LDA Payments: \$8,838,606

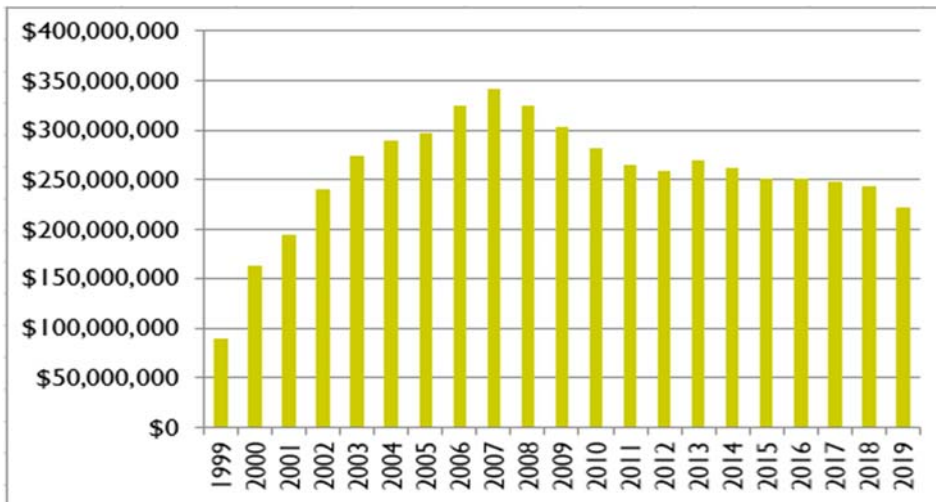
Total Employment: 1,281

Minority Employment: 19.00%

County Employment: 19.00%

Indiana Employment: 70.00%

## Yearly Win Totals



# INDIANA GRAND CASINO



**General Manager:**

Ron Baumann

**Address:**

4300 N. Michigan Road  
Shelbyville, Indiana 46176

**Website:**

[www.indianagrand.com](http://www.indianagrand.com)



Date Opened: June 6, 2008

Gaming Space: 83,800 Square Feet

Electronic Gaming Devices: 2,072

Table Gaming Positions: N/A

Restaurants: 3

Hotel: N/A

Total Taxes: \$68,597,112

LDA Payments: N/A

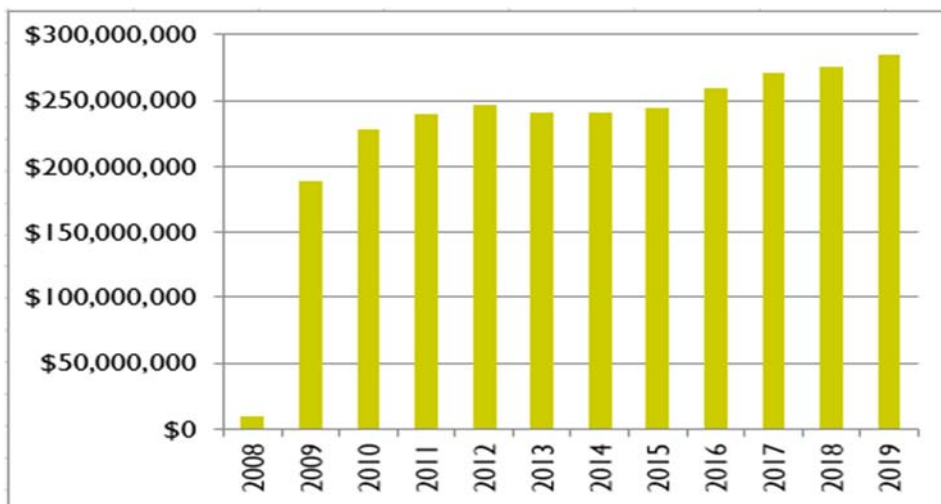
Total Employment: 972

Minority Employment: 8.95%

County Employment: 46.09%

Indiana Employment: 97.22%

## Yearly Win Totals



# MAJESTIC STAR CASINO I



**General Manager:**

Jahnae Erpenbach

**Address:**

1 Buffington Harbor Dr.  
Gary, Indiana 46406

**Website:**

[www.majesticstarcasino.com](http://www.majesticstarcasino.com)



Date Opened: June 11, 1996

Gaming Space: 43,000 Square Feet

Electronic Gaming Devices: 790

Table Gaming Positions: 370

Restaurants: 6

Hotel: 300 rooms

Total Taxes: \$19,298,799

LDA Payments: \$3,000,000

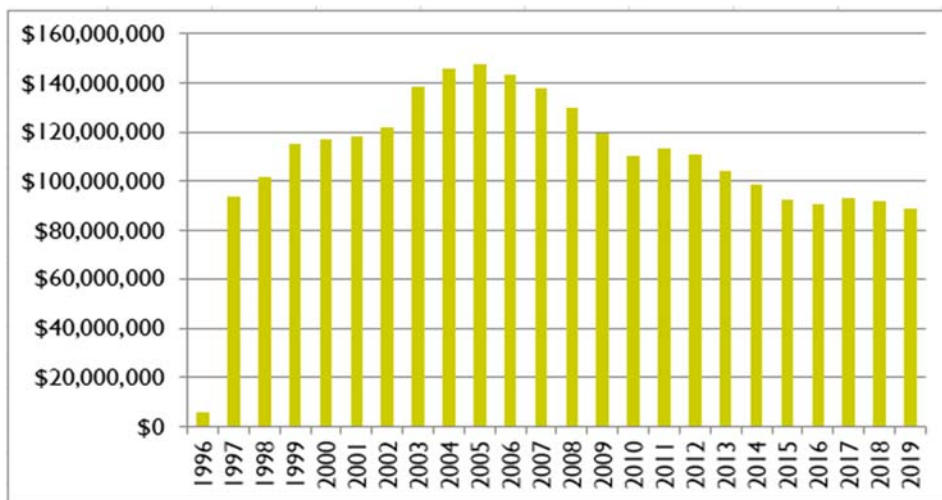
Total Employment: 763

Minority Employment: 60.00%

County Employment: 81.00%

Indiana Employment: 90.00%

## Yearly Win Totals





# MAJESTIC STAR CASINO II



**General Manager:**

Jahnae Erpenbach

**Address:**

1 Buffington Harbor Dr.  
Gary, Indiana 46406

**Website:**

[www.majesticstarcasino.com](http://www.majesticstarcasino.com)



Date Opened: June 11, 1996

Gaming Space: 36,571 Square Feet

Electronic Gaming Devices: 830

Table Gaming Positions: 240

Restaurants: 6

Hotel: 300 rooms

Total Taxes: \$9,803,838

LDA Payments: \$3,000,000

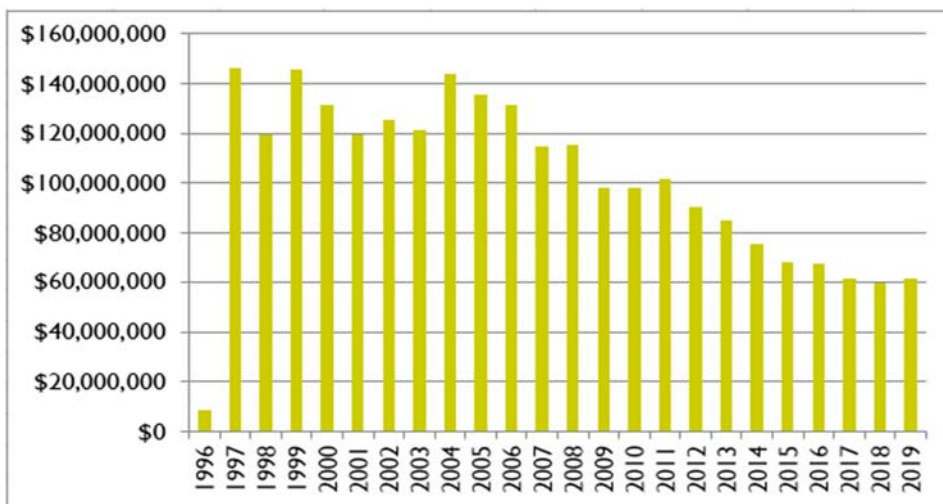
Total Employment: 201

Minority Employment: 48.00%

County Employment: 77.00%

Indiana Employment: 90.00%

## Yearly Win Totals



# Rising Star Casino



**General Manager:**

Ben Douglass

**Address:** 777 Rising Star Drive

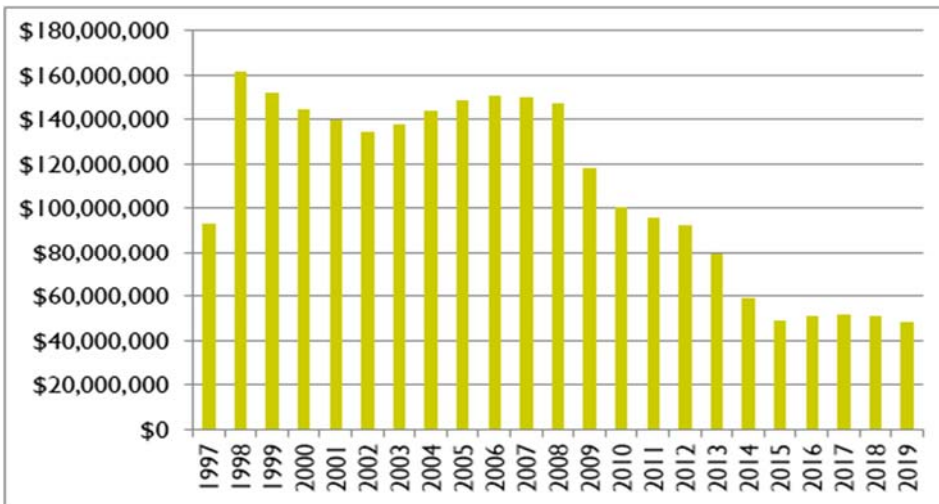
Rising Sun, Indiana 47040

**Website:**

[www.risingstarcasino.com](http://www.risingstarcasino.com)



## Yearly Win Totals



Date Opened: October 4, 1996

Gaming Space: 40,000 Square Feet

Electronic Gaming Devices: 879

Table Gaming Positions: 181

Restaurants: 5

Hotel: 294 rooms

Total Taxes: \$6,471,061

LDA Payments: \$605,308

Total Employment: 521

Minority Employment: 4.14%

County Employment: 88.48%

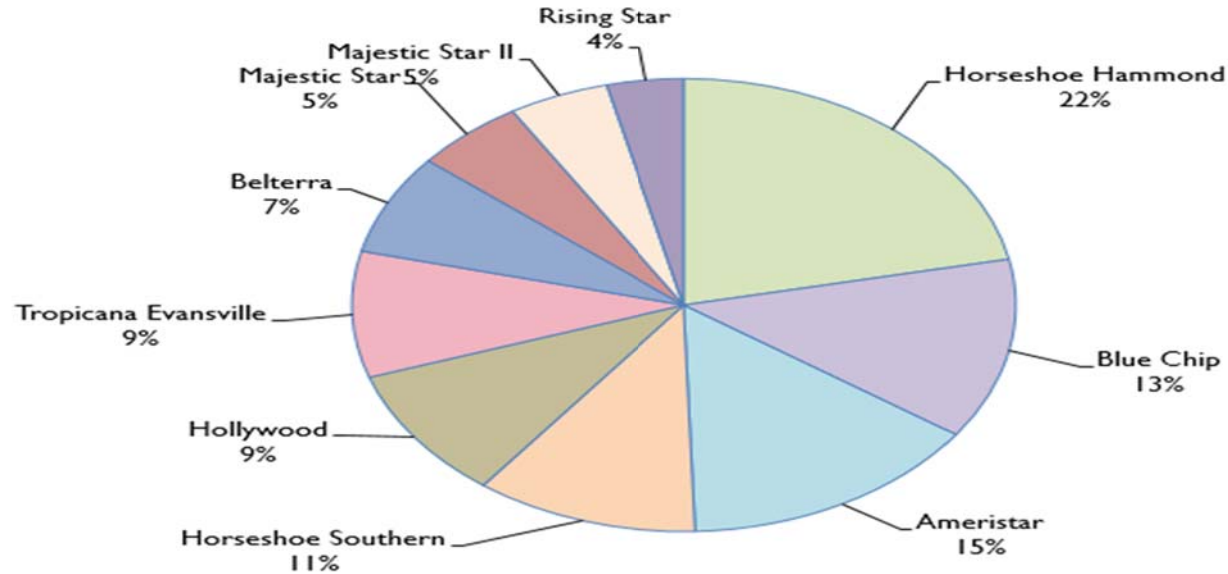
Indiana Employment: 89.44%



# Appendix



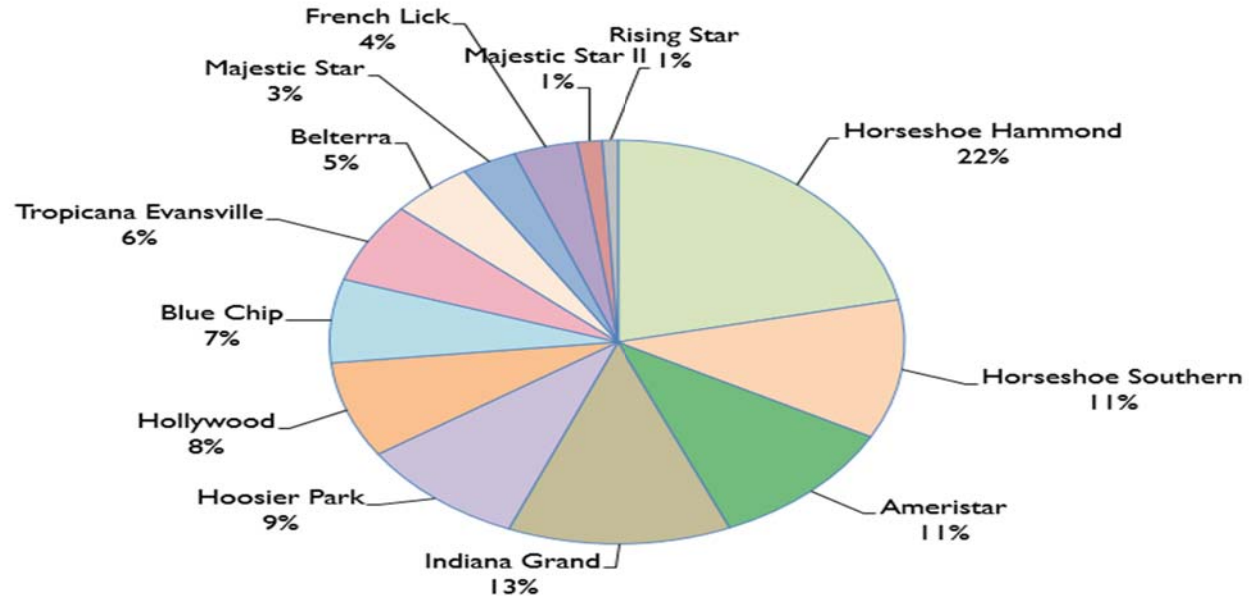
# 2019 SUPPLEMENTAL WAGERING TAX REPORTED



TAX REPORTED	HORSESHOE HAMMOND	BLUE CHIP	AMERISTAR	HORSESHOE SOUTHERN	HOLLYWOOD	TROPICANA EVANSVILLE	BELTERRA	MAJESTIC STAR	MAJESTIC STAR II	RISING STAR	GRAND TOTAL
JULY	820,390	492,767	567,730	450,692	376,839	347,130	296,517	170,653	151,033	147,527	<b>3,821,278</b>
AUGUST	806,976	485,973	586,832	440,037	349,332	333,247	325,643	183,224	153,176	152,350	<b>3,816,790</b>
SEPTEMBER	789,877	468,375	521,591	419,998	313,353	320,887	282,153	168,428	153,269	148,377	<b>3,586,308</b>
OCTOBER	835,683	452,230	530,886	396,779	306,961	297,213	261,185	178,682	156,672	145,836	<b>3,562,127</b>
NOVEMBER	741,929	446,636	543,987	401,789	343,889	311,791	253,425	173,542	149,369	139,648	<b>3,506,005</b>
DECEMBER	815,280	489,036	582,518	436,002	378,967	344,130	290,280	188,710	189,416	147,402	<b>3,861,742</b>
JANUARY	739,786	385,125	467,133	377,934	323,081	304,475	220,440	186,560	171,716	108,599	<b>3,284,850</b>
FEBRUARY	800,537	476,602	498,410	317,315	377,888	343,290	205,147	221,482	209,887	129,112	<b>3,579,669</b>
MARCH	987,467	614,722	685,685	464,452	419,819	438,108	319,503	254,584	250,579	159,566	<b>4,594,485</b>
APRIL	862,495	502,113	569,645	380,802	357,933	327,351	251,731	251,222	217,407	124,507	<b>3,845,204</b>
MAY	808,308	526,946	592,157	450,942	385,889	364,429	274,811	234,737	209,681	156,209	<b>4,004,109</b>
JUNE	837,995	517,909	535,572	399,772	358,653	343,702	265,727	209,658	202,118	144,376	<b>3,815,482</b>
<b>TOTAL</b>	<b>\$ 9,846,723</b>	<b>\$ 5,858,435</b>	<b>\$ 6,682,146</b>	<b>\$ 4,936,514</b>	<b>\$ 4,292,603</b>	<b>\$ 4,075,753</b>	<b>\$ 3,246,562</b>	<b>\$ 2,421,480</b>	<b>\$ 2,214,323</b>	<b>\$ 1,703,510</b>	<b>\$ 45,278,048</b>

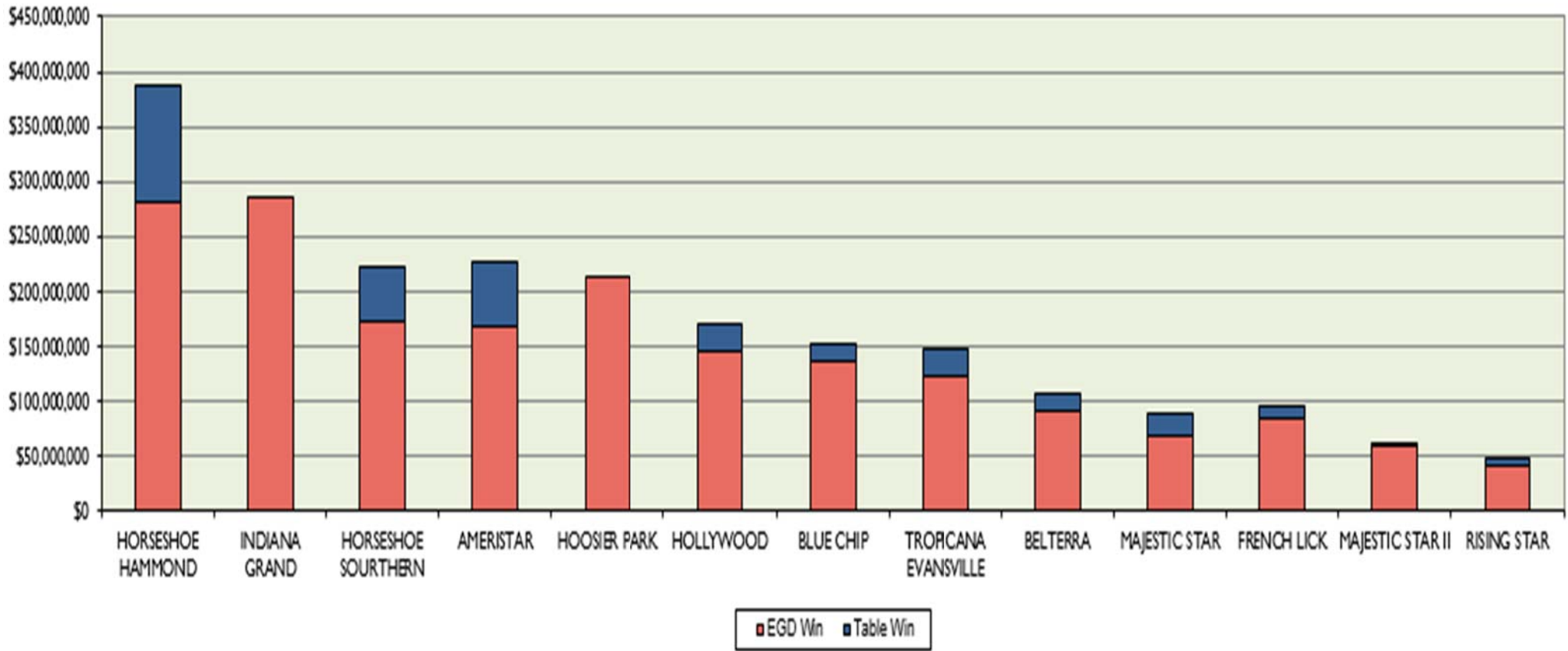
\*Per HEA 1350 (2017), effective 7/1/2018 casinos no longer report admissions. Admission tax was replaced with a supplement wagering tax.

# 2019 WAGERING TAX REPORTED



TAX REPORTED	HORSESHOE HAMMOND	HORSESHOE SOUTHERN	AMERISTAR	INDIANA GRAND	HOOSIER PARK	HOLLYWOOD	BLUE CHIP	TROPICANA EVANSVILLE	BELTERRA	MAJESTIC STAR	FRENCH LICK	MAJESTIC STAR II	RISING STAR	GRAND TOTAL
JULY	5,085,057	2,965,079	2,694,923	4,732,498	3,962,844	2,149,271	1,847,878	1,814,271	1,487,542	858,991	1,135,018	188,791	184,409	29,106,572
AUGUST	6,873,105	3,598,370	3,362,432	4,828,276	3,908,055	2,122,944	1,822,399	1,741,711	1,633,661	922,268	1,094,829	191,470	190,437	32,289,958
SEPTEMBER	8,540,791	4,058,595	3,453,347	4,709,210	4,003,568	2,382,910	2,315,303	2,171,476	1,699,253	847,790	1,069,896	191,586	185,471	35,629,196
OCTOBER	9,679,726	4,350,645	4,200,046	4,120,995	3,868,432	2,394,163	2,261,147	2,071,171	1,747,057	899,407	1,264,468	195,840	182,296	37,235,392
NOVEMBER	8,805,844	5,281,227	4,906,581	4,750,361	3,811,596	3,268,905	2,665,660	2,478,111	1,695,147	1,090,863	1,360,730	186,711	174,560	40,476,298
DECEMBER	11,017,292	5,736,869	5,530,236	5,914,715	4,039,207	3,786,455	3,056,475	2,997,650	2,286,830	1,266,513	1,629,157	236,770	184,253	47,682,420
JANUARY	9,997,105	4,972,821	4,434,811	5,058,686	3,590,578	3,685,333	2,682,209	2,837,546	1,843,146	1,252,080	1,210,127	682,086	135,749	42,382,276
FEBRUARY	10,818,068	4,175,200	4,731,742	5,955,015	4,478,788	4,310,508	3,574,514	3,588,394	1,715,267	1,486,455	1,801,183	1,049,433	607,085	48,291,652
MARCH	13,344,150	6,736,204	6,896,964	7,314,517	5,476,602	4,788,814	4,610,416	4,579,521	3,012,559	2,104,361	2,173,987	1,252,895	797,828	63,088,819
APRIL	11,655,337	5,845,644	6,309,356	6,082,579	4,790,179	4,082,884	3,765,845	3,421,782	2,525,729	2,107,566	1,955,638	1,087,033	622,536	54,252,108
MAY	10,923,089	6,922,348	6,559,409	7,692,326	4,953,865	4,401,771	3,952,096	3,809,361	2,757,300	1,969,267	2,367,587	1,063,660	781,047	58,153,126
JUNE	11,324,256	6,136,855	5,931,262	7,437,934	4,639,535	4,751,942	3,884,317	3,592,699	2,665,944	2,071,759	2,467,710	1,263,239	721,879	56,889,332
<b>TOTAL</b>	<b>\$118,063,821</b>	<b>\$60,779,859</b>	<b>\$59,011,107</b>	<b>\$68,597,112</b>	<b>\$51,523,250</b>	<b>\$42,125,901</b>	<b>\$36,438,258</b>	<b>\$35,103,692</b>	<b>\$25,069,435</b>	<b>\$16,877,319</b>	<b>\$19,530,329</b>	<b>\$7,589,515</b>	<b>\$4,767,551</b>	<b>\$545,477,149</b>

# 2019 TOTAL WIN PER CASINO



	HORSESHOE HAMMOND	INDIANA GRAND	HORSESHOE SOUTHERN	AMERISTAR	HOOSIER PARK	HOLLYWOOD	BLUE CHIP	TROPICANA EVANSVILLE	BELTERRA	MAJESTIC STAR	FRENCH LICK	MAJESTIC STAR II	RISING STAR
<b>TABLE GAME WIN</b>	\$ 105,838,718	N/A	\$ 49,851,685	\$ 57,455,164	N/A	\$ 24,469,020	\$ 16,941,396	\$ 25,264,181	\$ 16,341,728	\$ 20,088,028	\$ 13,250,730	\$ 1,486,437	\$ 5,905,204
<b>EGD WIN</b>	\$ 280,865,996	\$ 285,257,802	\$ 172,945,033	\$ 169,278,688	\$ 213,958,966	\$ 145,712,991	\$ 136,588,708	\$ 123,702,789	\$ 92,058,037	\$ 69,032,870	\$ 83,789,301	\$ 59,887,801	\$ 42,544,623
<b>TOTAL WIN</b>	\$ 386,704,714	\$ 285,257,802	\$ 222,796,718	\$ 226,733,852	\$ 213,958,966	\$ 170,182,011	\$ 153,530,104	\$ 148,966,970	\$ 108,399,765	\$ 89,120,898	\$ 97,040,031	\$ 61,374,238	\$ 48,449,827

STATE-WIDE WIN - TABLE GAMES	\$336,892,291
STATE-WIDE WIN - EGD	\$1,875,623,605
<b>TOTAL STATE-WIDE WIN</b>	<b>\$2,212,515,896</b>

# 2019 GAMING OPERATIONS SUMMARY

EGD'S	UNITS*	COIN IN	WIN
0	10	0	490,864
1 CENT	11,746	10,764,610,118	1,254,043,303
2 CENT	237	145,272,580	16,577,279
3 CENT	10	20,753,154	3,005,684
5 CENT	628	800,433,840	49,833,487
10 CENT	97	193,976,034	15,666,824
25 CENT	2,196	2,190,704,572	148,200,517
50 CENT	277	331,006,860	21,875,384
\$1	2,292	4,115,074,121	290,461,097
\$2	24	38,745,266	3,167,304
\$5	353	852,749,164	52,758,071
\$10	45	95,454,849	6,263,367
\$20	0	0	0
\$25	67	166,107,388	8,143,126
\$50	0	0	-4,550
\$100	26	66,728,464	4,922,033
\$500	1	52,500	22,500
\$1,000	1	27,000	25,000
Other **	0	0	172,315
<b>TOTAL</b>	<b>18,010</b>	<b>\$19,781,695,910</b>	<b>\$1,875,623,605</b>

TABLE GAMES	UNITS*	DROP	WIN
Baccarat	82	455,363,633	70,903,269
Big Six	3	1,171,783	515,607
Blackjack/21	279	575,221,356	112,765,136
Craps	44	219,090,386	48,800,808
Non Traditional	1	40,368	20,926
Poker ***	93	198,640,927	52,424,567
Poker Room **	116	17,825,617	17,825,612
Roulette	45	128,380,475	30,969,355
Other****	1	0	2,667,011
<b>TOTAL</b>	<b>664</b>	<b>\$1,595,734,545</b>	<b>\$336,892,291</b>

\* As of June 30, 2019

\*\* Traditional Poker

\*\*\* Includes Caribbean Stud, Let It Ride, Pai Gow, 3 Card, Boston 5 Stud, 3-5-7, Wild Hold Em Fold Em, Crazy 4, and 2-2-1.

\*\*\*\* Tournament receipts

\* As of June 30, 2019

\*\* Tournament receipts

Totals may include minor variations due to rounding.

# 2019 SUMMARY OF TABLE GAME ACTIVITY

As reported for the year ended June 30, 2019

UNITS*	AMERISTAR	BELTERRA	BLUE CHIP	FRENCH LICK	HOLLYWOOD	HORSESHOE HAMMOND	HORSESHOE SOUTHERN	MAJESTIC STAR	MAJESTIC STAR II	RISING STAR	TROPICANA EVANSVILLE
<b>Baccarat</b>	24	1	2	1	4	32	4	12	n/a	n/a	2
<b>Big Six</b>	n/a	n/a	n/a	n/a	n/a	3	n/a	0	n/a	n/a	n/a
<b>Black Jack</b>	29	21	23	25	36	38	45	27	0	16	19
<b>Craps</b>	6	4	4	3	5	9	5	3	0	2	3
<b>Non Traditional</b>	0	n/a	n/a	n/a	n/a	1	n/a	n/a	n/a	n/a	n/a
<b>Poker***</b>	14	10	6	5	7	23	13	4	n/a	5	6
<b>Poker Room**</b>	n/a	3	8	n/a	19	34	30	n/a	14	n/a	8
<b>Roulette</b>	6	3	4	3	6	10	6	3	n/a	1	3
<b>Other</b>	n/a	n/a	1	n/a	n/a	n/a	n/a	n/a	n/a	n/a	n/a
<b>TOTAL</b>	<b>79</b>	<b>42</b>	<b>48</b>	<b>37</b>	<b>77</b>	<b>150</b>	<b>103</b>	<b>49</b>	<b>14</b>	<b>24</b>	<b>41</b>
<b>DROP</b>											
<b>Baccarat</b>	160,999,128	893,380	5,300,684	441,500	6,975,909	208,709,352	21,892,790	39,082,689	0	0	11,068,201
<b>Big Six</b>	0	0	0	0	0	1,171,783	0	0	0	0	0
<b>Black Jack</b>	93,038,772	36,698,844	35,941,965	34,351,539	65,596,905	110,841,811	95,514,636	38,877,771	0	15,926,585	48,432,528
<b>Craps</b>	30,282,863	18,670,567	14,344,180	11,999,120	18,432,990	52,316,536	31,854,957	13,523,545	0	9,200,916	18,464,712
<b>Non Traditional</b>	0	0	0	0	0	40,368	0	0	0	0	0
<b>Poker***</b>	19,680,851	13,640,161	15,423,011	12,566,166	13,126,348	62,838,504	35,688,953	3,122,555	0	6,261,056	16,293,322
<b>Poker Room**</b>	0	168,809	714,137	0	760,353	9,492,112	3,495,547	0	1,275,931	0	1,918,728
<b>Roulette</b>	23,212,158	4,910,497	7,723,281	4,509,200	10,797,831	40,683,181	17,966,986	4,878,869	0	1,681,774	12,016,698
<b>Other</b>	0	0	0	0	0	0	0	0	0	0	0
<b>TOTAL</b>	<b>\$327,213,772</b>	<b>\$74,982,258</b>	<b>\$79,447,258</b>	<b>\$63,867,525</b>	<b>\$115,690,336</b>	<b>\$486,093,647</b>	<b>\$206,413,869</b>	<b>\$99,485,429</b>	<b>\$1,275,931</b>	<b>\$33,070,331</b>	<b>\$108,194,189</b>
<b>WIN</b>											
<b>Baccarat</b>	23,371,102	214,099	917,354	87,534	1,056,998	32,389,941	3,206,605	7,070,735	0	0	2,588,901
<b>Big Six</b>	0	0	0	0	0	515,607	0	0	0	0	0
<b>Black Jack</b>	16,330,480	6,714,491	6,579,643	5,852,995	11,675,568	25,243,865	20,674,186	8,281,563	0	2,134,411	9,277,934
<b>Craps</b>	7,303,562	4,297,497	2,826,096	2,480,198	4,041,316	11,194,482	8,062,999	2,921,070	0	1,851,273	3,822,315
<b>Non Traditional</b>	0	0	0	0	0	20,926	0	0	0	0	0
<b>Poker***</b>	5,241,867	3,683,111	4,147,003	3,539,155	3,627,430	15,705,674	9,437,165	577,621	0	1,552,657	4,912,884
<b>Poker Room**</b>	0	168,804	714,137	0	760,353	9,492,112	3,495,547	0	1,275,931	0	1,918,728
<b>Roulette</b>	4,793,929	1,263,476	1,687,713	1,288,273	2,879,301	9,734,354	4,974,988	1,237,039	0	366,863	2,743,419
<b>Other</b>	414,224	250	69,450	2,575	428,054	1,541,757	195	0	210,506	0	0
<b>TOTAL</b>	<b>\$57,455,164</b>	<b>\$16,341,728</b>	<b>\$16,941,396</b>	<b>\$13,250,730</b>	<b>\$24,469,020</b>	<b>\$105,838,718</b>	<b>\$49,851,685</b>	<b>\$20,088,028</b>	<b>\$1,486,437</b>	<b>\$5,905,204</b>	<b>\$25,264,181</b>

\* As of June 30, 2019

\*\* Traditional Poker

\*\*\* Includes Caribbean Stud/Draw, Let It Ride, Pai Gow, 3 Card, Boston 5 Stud, 3-5-7, Wild Hold em Fold Em, Crazy 4, and 2-2-1

Totals may include minor variations due to rounding



## 2019 SUMMARY OF EGD ACTIVITY—UNITS

UNITS	AMERISTAR	BELTERRA	BLUE CHIP	FRENCH LICK	HOLLYWOOD	HOOSIER PARK	HORSESHOE HAMMOND	HORSESHOE SOUTHERN	INDIANA GRAND	MAJESTIC STAR	MAJESTIC STAR II	RISING STAR	TROPICANA EVANSVILLE
<b>0</b>	n/a	n/a	n/a	n/a	n/a	n/a	n/a	n/a	10	n/a	n/a	n/a	n/a
<b>1 cent</b>	1,320	813	1004	532	822	932	1,399	998	1309	532	651	681	753
<b>2 cent</b>	1	n/a	32	14	39	45	16	33	47	7	3	n/a	n/a
<b>3 cent</b>	n/a	n/a	n/a	n/a	n/a	n/a	10	n/a	n/a	n/a	n/a	n/a	n/a
<b>nickel</b>	65	44	97	37	63	20	83	32	63	48	51	3	22
<b>10 cent</b>	6	12	1	n/a	44	3	4	8	n/a	17	n/a	n/a	2
<b>25 cent</b>	114	130	244	145	248	254	211	235	259	71	93	81	111
<b>50 cent</b>	42	14	8	14	58	19	52	16	18	9	n/a	15	12
<b>\$1</b>	161	112	238	98	210	265	348	209	303	94	28	55	171
<b>\$2</b>	8	n/a	n/a	n/a	n/a	n/a	8	6	2	n/a	n/a	n/a	n/a
<b>\$5</b>	23	20	36	12	40	34	23	34	50	10	4	31	36
<b>\$10</b>	2	11	1	1	8	1	4	n/a	5	2	n/a	3	7
<b>\$20</b>	n/a	n/a	n/a	n/a	n/a	n/a	n/a	n/a	n/a	n/a	n/a	n/a	n/a
<b>\$25</b>	4	4	6	n/a	15	7	12	6	4	n/a	n/a	7	2
<b>\$50</b>	n/a	n/a	n/a	n/a	n/a	n/a	n/a	n/a	n/a	n/a	n/a	n/a	n/a
<b>\$100</b>	2	5	2	2	3	2	1	2	2	n/a	n/a	3	2
<b>\$500</b>	n/a	n/a	n/a	n/a	n/a	n/a	1	n/a	n/a	n/a	n/a	n/a	n/a
<b>\$1,000</b>	n/a	n/a	n/a	n/a	n/a	n/a	1	n/a	n/a	n/a	n/a	n/a	n/a
<b>TOTAL</b>	<b>1,748</b>	<b>1,165</b>	<b>1,669</b>	<b>855</b>	<b>1,550</b>	<b>1,582</b>	<b>2,173</b>	<b>1,579</b>	<b>2,072</b>	<b>790</b>	<b>830</b>	<b>879</b>	<b>1,118</b>

## 2019 SUMMARY OF EGD ACTIVITY— COIN IN

COIN IN	AMERISTAR	BELTERRA	BLUE CHIP	FRENCH LICK	HOLLYWOOD	HOOSIER PARK	HORSESHOE HAMMOND	HORSESHOE SOUTHERN	INDIANA GRAND	MAJESTIC STAR	MAJESTIC STAR II	RISING STAR	TROPICANA EVANSVILLE
0	0	0	0	0	0	0	0	0	0	0	0	0	0
1 cent	1,071,073,872	549,138,418	808,372,661	581,992,354	697,439,264	1,173,207,174	1,598,861,033	848,759,364	1,472,895,854	449,677,466	445,976,666	381,479,854	685,736,138
2 cent	1,243,213	0	12,090,516	15,257,613	14,625,550	37,500,000	17,947,302	18,178,769	25,320,946	2,711,885	396,786	0	0
3 cent	0	0	0	0	0	0	20,753,154	0	0	0	0	0	0
nickel	88,583,899	54,049,561	124,324,990	31,102,207	19,494,951	23,250,622	152,548,737	78,166,799	65,804,957	57,806,322	66,957,185	812,599	37,531,011
10 cent	32,085,957	22,495,261	5,872,412	0	97,187,779	5,591,843	9,131,804	14,017,694	0	5,553,313	0	0	2,039,971
25 cent	103,146,182	110,738,104	239,685,833	136,749,286	183,465,055	266,719,142	219,776,299	196,823,950	431,762,011	72,111,293	53,466,847	37,517,065	138,743,505
50 cent	48,606,669	8,296,035	8,480,002	9,833,327	53,781,795	17,126,888	125,936,417	17,166,765	17,059,929	8,715,531	0	7,237,781	8,765,721
\$1	266,306,341	168,508,666	312,709,818	176,781,015	258,849,794	689,088,063	515,220,557	431,230,331	923,217,210	99,282,653	21,726,294	38,526,896	213,626,483
\$2	6,940,234	0	0	0	0	0	17,276,578	5,779,579	8,748,875	0	0	0	0
\$5	48,269,073	51,854,001	62,918,394	29,393,385	90,880,273	104,150,274	97,387,565	111,490,764	149,044,423	12,462,725	1,169,625	20,700,295	73,028,367
\$10	3,167,280	17,509,422	2,358,230	8,672,110	10,623,495	4,087,217	18,731,670	0	11,517,255	630,750	0	2,614,670	15,542,750
\$20	0	0	0	0	0	0	0	0	0	0	0	0	0
\$25	5,162,175	3,892,375	8,443,075	0	19,859,025	75,142,113	25,473,525	0	15,929,275	0	0	2,167,075	10,038,750
\$50	0	0	0	0	0	0	0	0	0	0	0	0	0
\$100	3,660,600	11,979,700	3,774,500	3,073,700	4,528,000	2,849,436	9,724,700	6,181,600	13,485,428	0	0	2,652,200	4,818,600
\$500	0	0	0	0	0	0	52,500	0	0	0	0	0	0
\$1,000	0	0	0	0	0	0	27,000	0	0	0	0	0	0
<b>TOTAL</b>	<b>\$1,678,245,495</b>	<b>\$998,461,543</b>	<b>\$1,589,030,431</b>	<b>\$992,854,997</b>	<b>\$ 1,450,734,981</b>	<b>\$2,398,712,772</b>	<b>\$2,828,848,841</b>	<b>\$1,727,795,615</b>	<b>\$3,134,786,163</b>	<b>\$708,951,938</b>	<b>\$589,693,403</b>	<b>\$493,708,435</b>	<b>\$1,189,871,296</b>

As of June 30, 2019

Totals may include minor variations due to rounding.

## 2019 SUMMARY OF EGD ACTIVITY—WIN

WIN	AMERISTAR	BELTERRA	BLUE CHIP	FRENCH LICK	HOLLYWOOD	HOOSIER PARK	HORSESHOE HAMMOND	HORSESHOE SOUTHERN	INDIANA GRAND	MAJESTIC STAR	MAJESTIC STAR II	RISING STAR	TROPICANA EVANSVILLE
0	0	0	0	0	0	0	0	0	490,864	0	0	0	0
1 cent	128,433,355	61,336,811	86,432,693	59,183,978	85,601,146	135,115,989	191,409,702	104,216,524	180,290,779	51,410,450	51,407,550	34,966,445	84,237,881
2 cent	49,709	0	1,460,795	1,167,081	1,985,765	4,091,012	2,085,089	2,003,706	3,397,711	296,972	39,439	0	0
3 cent	0	0	0	0	0	0	3,005,684	0	0	0	0	0	0
nickel	5,095,508	2,859,692	7,259,105	1,369,075	2,070,022	1,750,809	9,872,985	4,969,214	5,209,725	3,045,961	3,801,489	64,256	2,465,646
10 cent	2,862,839	1,653,288	372,302	0	6,665,332	602,033	888,344	1,727,457	0	664,584	0	0	230,645
25 cent	6,258,387	7,298,956	15,677,790	8,469,892	13,875,780	16,772,537	18,593,663	14,651,367	25,696,986	4,042,956	3,384,680	2,508,183	10,969,340
50 cent	2,684,138	693,029	640,977	745,290	3,710,298	2,019,061	6,045,802	1,735,538	1,370,996	711,227	0	633,832	885,196
\$1	19,389,195	12,410,594	20,330,179	10,547,900	23,940,411	44,296,080	40,682,181	33,608,388	55,861,173	8,036,707	1,191,373	2,613,563	17,553,353
\$2	581,876	0	0	0	0	0	1,594,697	638,305	352,426	0	0	0	0
\$5	3,197,181	3,265,732	3,709,409	1,714,350	5,695,551	6,735,405	3,301,647	7,843,769	9,905,678	789,583	63,270	1,348,307	5,188,189
\$10	199,905	1,158,188	182,487	410,310	599,862	337,992	944,004	0	845,575	34,430	0	142,475	1,408,139
\$20	0	0	0	0	0	0	0	0	0	0	0	0	0
\$25	364,194	399,847	156,836	0	1,074,806	2,037,297	1,485,012	1,256,183	848,751	0	0	23,900	496,300
\$50	0	0	0	0	0	0	0	0	0	0	0	0	(4,550)
\$100	162,401	981,900	366,135	180,000	494,018	200,751	909,686	294,582	816,248	0	0	243,662	272,650
\$500	0	0	0	0	0	0	22,500	0	0	0	0	0	0
\$1,000	0	0	0	0	0	0	25,000	0	0	0	0	0	0
other	0	0	0	1,425	0	0	0	0	170,890	0	0	0	0
<b>TOTAL</b>	<b>\$169,278,688</b>	<b>\$92,058,037</b>	<b>\$136,588,708</b>	<b>\$83,789,301</b>	<b>\$ 145,712,991</b>	<b>\$213,958,966</b>	<b>\$ 280,865,996</b>	<b>\$ 172,945,033</b>	<b>\$285,257,802</b>	<b>\$ 69,032,870</b>	<b>\$59,887,801</b>	<b>\$42,544,623</b>	<b>\$123,702,789</b>

As of June 30, 2019.

Totals may include minor variations due to rounding.

## 2019 GRADUATED TAX STATUS

North Casinos	Rate	Date of Change
Ameristar	15%	07/01/2018
	20%	08/12/2018
	25%	09/28/2018
	30%	11/08/2018
	35%	03/21/2019
Blue Chip	15%	07/01/2018
	20%	09/01/2018
	25%	11/06/2018
	30%	01/12/2019
	35%	
Horseshoe Hammond	15%	07/01/2018
	20%	07/25/2018
	25%	08/18/2018
	30%	09/12/2018
	35%	11/25/2018
Majestic Star	15%	07/01/2018
	20%	11/07/2018
	25%	03/02/2019
	30%	06/03/2019
	35%	
Majestic Star II *	5%	07/01/2018
	20%	01/06/2019
	25%	05/30/2019
	30%	
	35%	

Racinos	Rate	Date of Change
Hoosier Park	25%	07/01/2018
	30%	01/11/2019
	35%	
Indiana Grand	25%	07/01/2018
	30%	12/13/2018
	35%	05/07/2019

Casinos	
AGR	Rate
less than \$25 million	15%
\$25 - \$50 million	20%
\$50 - \$75 million	25%
\$75 - \$150 million	30%
\$150 - \$600 million	35%
over \$600 million	40%

Racinos	
AGR	Rate
less than \$100 million	25%
\$100-\$200 million	30%
over \$200 million	35%

South Casinos	Rate	Date of Change
Belterra	15%	07/01/2018
	20%	09/14/2018
	25%	12/12/2018
	30%	03/10/2019
	35%	
Tropicana Evansville	15%	07/01/2018
	20%	09/02/2018
	25%	11/13/2018
	30%	01/20/2019
	35%	
French Lick	15%	07/01/2018
	20%	10/14/2018
	25%	01/31/2019
	30%	05/04/2019
	35%	
Hollywood	15%	07/01/2018
	20%	08/25/2018
	25%	10/28/2018
	30%	12/27/2018
	35%	06/01/2019
Horseshoe Southern	15%	07/01/2018
	20%	08/09/2018
	25%	09/18/2018
	30%	11/01/2018
	35%	03/11/2019
Rising Star *	5%	07/01/2018
	20%	02/02/2019
	25%	
	30%	
	35%	

\* Did not reach \$75 Million total for FY 2019.



The Indiana Gaming Commission would like to thank  
Josie Conrad for her help in creating this report.

[WWW.IN.GOV/IGC](http://WWW.IN.GOV/IGC)

**101 West Washington Street, Suite 1600  
Indianapolis, Indiana 46204  
317.233.0046**

