



Indiana Gaming Commission
Sara Gonso Tait
Executive Director



2018
Annual Report to
Governor Eric Holcomb

CONTENTS

Current Commission Members	2-3
Executive Director's Report	5-7
FY 2018 Tax Overview	9
FYS 2017-2018 Tax Comparison	10
Revenues and Expenditures	11
MBE/WBE Utilization	12
Organizational Chart	13-14
<u>Divisions</u>	
Division Statistics	16-18
<u>Indiana Casinos</u>	
Casino Map	20
Property Summaries	21-33
<u>Appendix</u>	35-44

THE INDIANA GAMING COMMISSION

Michael McMains (Chairman)



Michael McMains, of Indianapolis, is a health and business lawyer and is a graduate of the Purdue University College of Pharmacy and the Indiana University McKinney School of Law. Mike served on staff for then-U.S. Senator Dan Coats from 2010-2017, first as his state director and then as senior counsel.

Mr. McMains was appointed to the Commission in April 2018.

Marc D. Fine (Vice Chairman)



Marc D. Fine, of Evansville, is an attorney with the firm of Jackson Kelly, PLLC. Mr. Fine is a 1981 graduate of the Indiana University School of Business with a B.S. in finance, with distinction, and a 1984 graduate of the University of Illinois College Of Law. He is a member of the Board of Directors of German American Bank, based in Jasper, Indiana.

Mr. Fine was appointed to the Commission in October 2007.

Susan Williams



Susan Williams, of Indianapolis, recently retired as President of Indiana Sports Corporation. During her tenure at the helm of ISC, Indianapolis was awarded Big Ten Men's and Women's Basketball Tournaments and Football Championship, the 2008 Olympic Diving Trials, 2012 Super Bowl, 2015 Men's Final Four, 2016 Women's Final Four. Prior to arriving at ISC, Williams served as Executive Director of the Indiana State Office Building Commission. She served 13 years on the Indianapolis-Marion County City-County Council. Susan received her undergraduate degree from Franklin College and earned a master's degree from Indiana University.

Ms. Williams was appointed to the Commission in January 2013.

Joseph C. Svetanoff (Secretary)



Joseph C. Svetanoff, of Crown Point, is a senior attorney at the law firm of Kopka Pinkus Dolin, P.C. Mr. Svetanoff is a 1994 graduate of Butler University with a B.S. in Marketing, and a 2002 graduate of Valparaiso University School of Law. He currently serves as a criminal public defender with Lake County Superior Court, County Division, Room I.

Mr. Svetanoff was appointed to the Commission in February 2014.

THE INDIANA GAMING COMMISSION

Mike Herndon



Mike Herndon, of Shelbyville, recently retired as the Director of Insurance Fraud investigations in the Enforcement Division of the Indiana Department of Insurance. Mr. Herndon was elected to serve as Sheriff of Shelby County, Indiana, for two terms. Also, he served in the Indiana House of Representatives from 2001 to 2002. Mike attended Indiana University and Herron Art Institute from 1969 to 1972 and is a graduate of the Indiana Law Enforcement Academy and the FBI National Academy.

Mr. Herndon was appointed to the Commission in October 2014.

Richard McClain



Richard McClain, of Logansport, is a former member of the Indiana House of Representatives, representing District 24 from 1994-2012. Prior to working at the Statehouse, he was a Township Trustee and Logansport City Engineer. Mr. McClain has also worked in a variety of positions in the private sector, including being a successful self-employed inventor. Mr. McClain is a graduate of Purdue University.

Mr. McClain was appointed to the Commission in November 2015.

Jane Saxon, CPA



Jane Saxon, of Noblesville, is a senior manager at Somerset CPAs and Advisors. She is a graduate of the IUPUI Kelley School of Business and holds a B.S. in Accounting. Ms. Saxon is active in her community and has served several not for profit organizations. Most recently, Ms. Saxon served as the treasurer for the Noblesville Boys and Girls Club Auxiliary, whose mission is to support the Boys and Girls Club of Noblesville both financially and through volunteer efforts.

Ms. Saxon was appointed to the Commission in September 2016.



Indiana Gaming Commission



Executive Director's Annual Report



Sara Gonso Tait
Executive Director

Integrity and providing great customer service remained cornerstones of the Indiana Gaming Commission's work this year as we pursued an aggressive agenda full of unprecedented industry consolidation and highlighted by significant industry investment.

Commissioner and Staff Update

Michael McMains of Indianapolis was appointed chair to replace Cris Johnston, who left the position upon being named Governor Holcomb's deputy chief of staff. Chairman McMains is a health and business lawyer and is a graduate of the Purdue University College of Pharmacy and the Indiana University McKinney School of Law. He served on staff for then-U.S. Senator Dan Coats from 2010-2017, first as his state director and then as senior counsel.

To fill a vacancy created by the retirement of the Assistant Director of Charity Gaming, the IGC was pleased to recruit Mark Mason, a former State Police Trooper who was part of the original enforcement division assigned to assist in overseeing gaming. The IGC also welcomed Sara Martin, formerly with the Office of Attorney General, as the new License Control Counsel and promoted Caitlin Hannah from the position of Field Auditor to Assistant Director of Compliance.

Revenues

With a total state-wide win of \$2,241,722,541, a \$21.5 million increase from FY17, or a 1% increase, casino revenues remained relatively unchanged. Admission taxes declined by approximately \$1.6 million, or 3.3%, due in part to late winter flooding which caused the closure of some Ohio River casinos for several days. Wagering taxes increased by approximately 1.3%, indicating play by patrons partially offset the decrease in admissions. Wagering and admissions taxes combined totaled \$602,409,935 in FY18. This is an increase of approximately \$5.5 million from FY17, or about 0.9%.

Tropicana Land-Based Casino

With the opening of its new facility in October, Tropicana in Evansville was the first licensee to take

advantage of a law allowing casinos to relocate to land-based facilities on their current footprints. With its location in downtown Evansville, the project allowed the casino and its amenities to integrate more fully into the city's riverfront. The property saw revenues increase \$22 million, or 18%, year-over-year.

Horseshoe South Land-Based Construction

Horseshoe Southern Indiana in Harrison County broke ground in June on a new \$85 million land-based facility. Opening of the new 100,000 square foot facility is targeted for December 2019.

Other Casino Investments

Indiana continued to see investment from its casino licensees. As part of its \$22 million casino refresh, Ameristar in East Chicago opened a new land-based high limit room in May. Also on Lake Michigan, Blue Chip Casino began construction of a \$15 million addition to its convention facilities, scheduled to open in September 2018.

On the Ohio River, Rising Star added two amenities to its property that are unique to Indiana. A 56-space recreational vehicle park opened in August and a ferry boat, along with a dock on each side of the river, were constructed. It is anticipated that the ferry will begin full operation in September 2018, providing not only shorter drive times for patrons, but also providing an amenity to the region through making the ferry available to the general public.

Casino License Transfers

Caesars Resort Collection, LLC, a wholly-owned subsidiary of Caesars Entertainment Corporation, received approval of a \$1.7 billion transaction to acquire ownership in the Hoosier Park and Indiana Grand racinos. Caesars also owns Horseshoe Hammond and Horseshoe Southern Indiana. Approval of the transaction triggered a statutory \$50 million racino license transfer fee deposit into the state's General Fund.

Penn National Gaming, Inc. received approval to purchase Ameristar Casino located in East Chicago, Indiana as part of its \$2.8 billion purchase of Pinnacle Entertainment, Inc. As Indiana statute does not permit an entity to own more than two casino licenses authorized under IC 4-33, and due to similar ownership limits in other states, it was necessary for Penn to divest a number of Pinnacle properties prior to closing. In Indiana, Penn elected divestiture Belterra Casino Resort in Florence as part of \$575 million transaction with Boyd Gaming Corporation. Boyd also acquired three Pinnacle properties in other states. With Boyd's existing ownership of Blue Chip Casino in Michigan City and Penn's acquisition of a second Indiana casino property, each was assessed a \$2 million statutory fee as a condition of licensure.

These transactions reduced the number of companies operating Indiana's 13 casino and racino licenses from ten to seven. It is a positive reflection upon the business environment in Indiana that so many gaming companies sought to increase their stake here.

Legislation

In May, the United States Supreme Court struck down the Professional and Amateur Sports Protection Act of 1992, clearing the way for states to legalize and regulate sports wagering. It is anticipated that the subject will receive more rigorous consideration in the coming legislative session. The IGC has joined many other gaming regulators in developing expertise on the topic.

Staff also engaged proactively with charity gaming stakeholders to discuss statutory revisions that

would provide more concise guidance for charitable organizations. The IGC will continue the discourse with both charitable organizations and policymakers with the goal of modernizing both the statute and rules.

Looking Ahead

The IGC looks forward to being part of the continual evolution of the gaming industry in Indiana. Whether it is by the creation of new technology, changes in statute, or facilitating capital projects that will benefit the state, the IGC welcomes the new challenges as a strong regulatory agency dedicated to ensuring the continued economic development brought as a result of casino operation in our state.

Respectfully submitted,

A handwritten signature in black ink, appearing to read "Sara Gonso Tait", with a long horizontal flourish extending to the right.

Sara Gonso Tait
Executive Director



Indiana Gaming Commission



FY 2018 TAX OVERVIEW

In FY 2018, gaming operations at Indiana casinos generated **\$556,466,312** in wagering tax and **\$45,943,623** in admission tax, for a total of **\$602,409,935**. As of June 30, 2018, **\$14,310,995,759** in Admission and Wagering Tax had been reported since inception. For more information on wagering and admissions taxes and how they are distributed, please visit the State Budget Agency website at:

www.in.gov/sba/2511.htm.

FY 2018	Total Win	Wagering Tax	Admission Tax	Total Tax
Ameristar	222,499,815	57,968,432	6,034,269	64,002,701
Belterra	109,427,640	25,260,226	3,029,052	28,289,278
Blue Chip	153,278,470	36,406,553	6,310,989	42,717,542
French Lick	93,151,811	18,376,844	N/A	18,376,844
Hollywood	174,676,582	43,707,795	4,241,151	47,948,946
Hoosier Park	208,706,038	50,126,050	N/A	50,126,050
Horseshoe Hammond	407,751,582	125,494,971	9,928,857	135,423,828
Horseshoe Southern	244,309,636	68,317,275	5,064,942	73,382,217
Indiana Grand	275,956,046	65,431,941	N/A	65,431,941
Majestic Star	92,181,211	17,779,264	2,490,150	20,269,414
Majestic Star II	59,800,171	7,185,826	2,490,150	9,675,976
Rising Star	50,910,904	5,230,558	2,120,559	7,351,117
Tropicana Evansville *	149,072,635	35,180,578	4,233,504	39,414,083
TOTALS	\$2,241,722,541	\$556,466,312	\$45,943,623	\$602,409,935

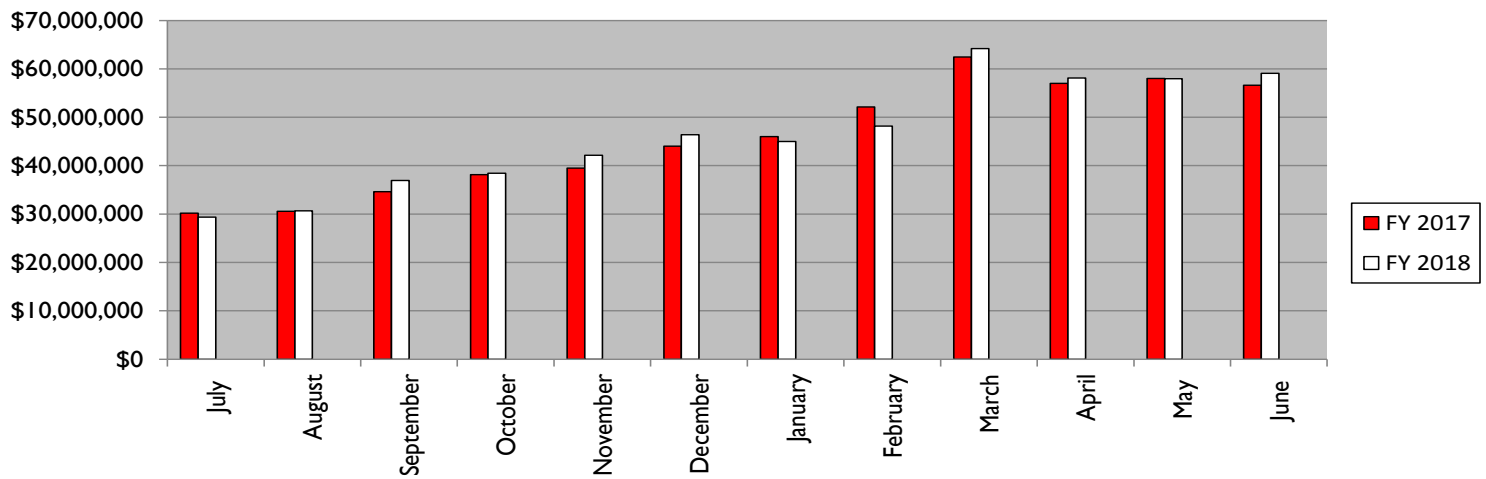
* Per HEA 1350, effective 10/19/2017 Tropicana no longer reports admissions. In FY2018 Tropicana paid \$3,217,250 in Supplemental Wagering Tax.

FY 2017 TAX COMPARISON TO FY 2018

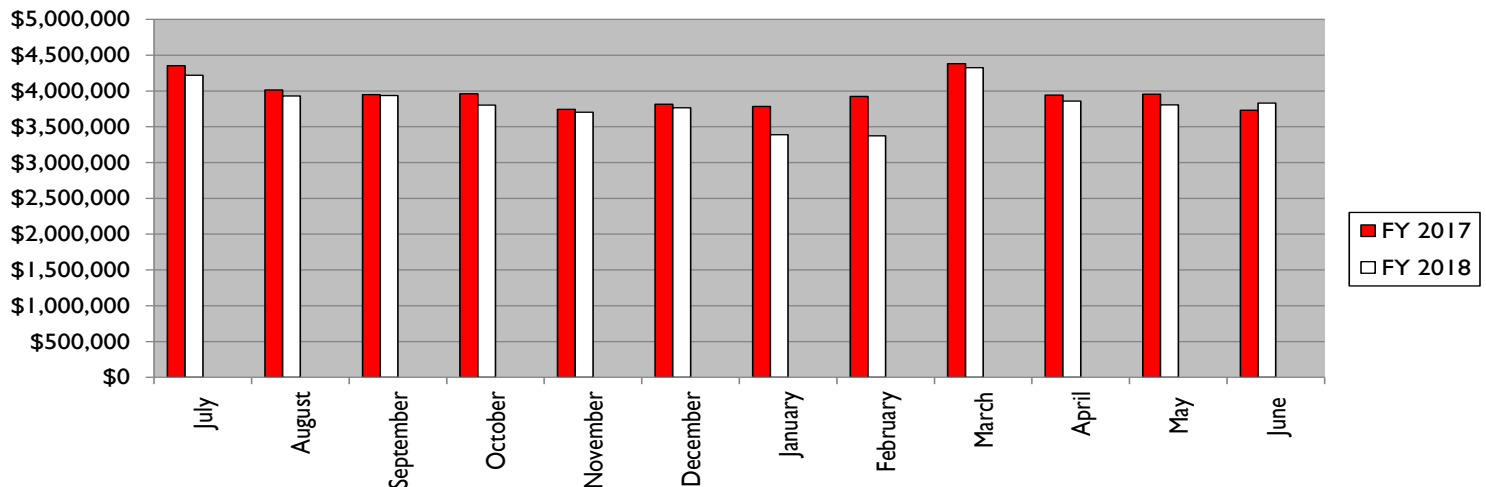
WAGERING TAX	FY 2017	FY 2018	DIFFERENCE	%
July	30,184,162	29,351,022	(833,140)	-2.76%
August	30,563,657	30,683,684	120,027	0.39%
September	34,619,914	36,945,942	2,326,027	6.72%
October	38,161,501	38,426,073	264,572	0.69%
November	39,502,963	42,168,444	2,665,481	6.75%
December	44,043,440	46,410,580	2,367,140	5.37%
January	46,021,307	45,004,730	(1,016,577)	-2.21%
February	52,142,499	48,173,656	(3,968,844)	-7.61%
March	62,467,958	64,190,339	1,722,381	2.76%
April	56,994,198	58,097,474	1,103,275	1.94%
May	58,027,027	57,948,225	(78,802)	-0.14%
June	56,635,855	59,066,143	2,430,288	4.29%
TOTAL	\$549,364,483	\$556,466,312	\$7,101,829	1.29%

ADMISSIONS TAX	FY 2017	FY 2018	DIFFERENCE	%
July	4,353,285	4,220,889	(132,396)	-3.04%
August	4,014,729	3,929,907	(84,822)	-2.11%
September	3,947,949	3,936,834	(11,115)	-0.28%
October	3,962,214	3,802,883	(159,331)	-4.02%
November	3,743,913	3,702,824	(41,089)	-1.10%
December	3,814,008	3,765,274	(48,734)	-1.28%
January	3,784,503	3,388,534	(395,969)	-10.46%
February	3,923,478	3,373,991	(549,487)	-14.01%
March	4,379,976	4,324,546	(55,430)	-1.27%
April	3,942,294	3,859,724	(82,570)	-2.09%
May	3,956,394	3,805,981	(150,413)	-3.80%
June	3,730,785	3,832,237	101,452	2.72%
TOTAL	\$47,553,528	\$45,943,623	(\$1,609,905)	-3.39%

WAGERING TAX COMPARISON FY 2017 TO FY 2018



ADMISSIONS TAX COMPARISON FY 2017 TO FY 2018



REVENUES & EXPENDITURES

FEES	\$6,344,288	FINES	\$707,534
<u>Occupational Licensing</u>		Riverboats	\$543,300
Applications	\$641,650	Suppliers	\$46,500
Permanent/Renewal	\$523,400	Voluntary Exclusion Program	\$117,734
Subtotal	\$1,165,050		
 		EXPENDITURES	\$25,707,935
<u>Casino Licensing</u>		<u>IGC Administration</u>	
Applications for merger/buyout	\$250,000	Salary/Wages	\$2,826,411
Permanent/Renewal	\$450,200	Other Operating & Encumbrance	\$500,506
Other - License Transfer		Less Reimbursements	-\$112,015
Subtotal	\$700,200	Subtotal	\$3,214,902
 		<u>Charity Gaming Enforcement</u>	
<u>Supplier Licensing</u>		Salary/Wages	\$2,836,098
Applications:	\$5,000	Build Indiana	\$2,250,000
Permanent/Renewal:	\$250,050	Other Operating & Encumbrance	\$517,958
Other - Junketeer:	\$7,225	Subtotal	\$5,604,056
Subtotal	\$262,275		
 		<u>Athletic Division</u>	
<u>Charity Gaming*</u>		Salary/Wages	\$145,983
Licensing	\$3,987,758	Other Operating & Encumbrance	\$11,656
Penalties/Misc.	\$62,228	Less Reimbursements	-\$8,353
Subtotal	\$4,049,986	Subtotal	\$149,286
 		<u>Gaming Enforcement**</u>	
<u>Athletic Division</u>		Salary/Wages	\$15,847,593
Licensing	\$26,737	Other Operating & Encumbrance	\$892,098
Closed Circuit Tax	\$1,200	Subtotal	\$16,739,691
Event Tax	\$28,590		
Penalties	\$250		
Subtotal	\$56,777		
<u>Fantasy Sports</u>			
Applications	\$100,000		
Renewal	\$10,000		
Subtotal	\$110,000		

*Does not include Charity Gaming Excise Tax of \$1,250,366 collected by IDOR.

**Fully reimbursed by riverboat casinos and racinos.

MBE/WBE UTILIZATION

Disparity Study

Statute requires the IGC to establish annual goals for the use of minority and women-owned enterprises (M/WBE). These goals must be derived from a statistical analysis of utilization study of casino contracting and purchases. Such an analysis, also called a disparity study, must be updated every five years.

In keeping with its statutory mandate, an update of the IGC’s study was completed in November 2017. The Indiana University Public Policy Institute completed the study on our behalf, examining the contracting and purchasing practices of Indiana’s casinos from 2012 through 2017. Based upon actual purchase data provided by the casinos and audited by IGC staff, the study period reviewed over \$1.7 billion in spending on goods and services.

In addition to a review of purchasing, also called utilization, a disparity study must also seek to establish capacity, which is a measure of all firms ready, willing and able to provide goods and services to Indiana’s river-boat casinos. The capacity estimate derived from the study is below.

<u>Capacity Estimates</u>	<u>MBE</u>	<u>WBE</u>
Construction	10.7%	9.7%
Procurement of Supplies	1.7%	3.7%
Professional Services	3.5%	6.5%
Other Services	2.2%	6.4%

The IGC adopted the study at its November meeting in Resolution 2017-219 and will continue to monitor M/WBE utilization annually. The full disparity study is available at www.in.gov/igc.

2017 Expenditures

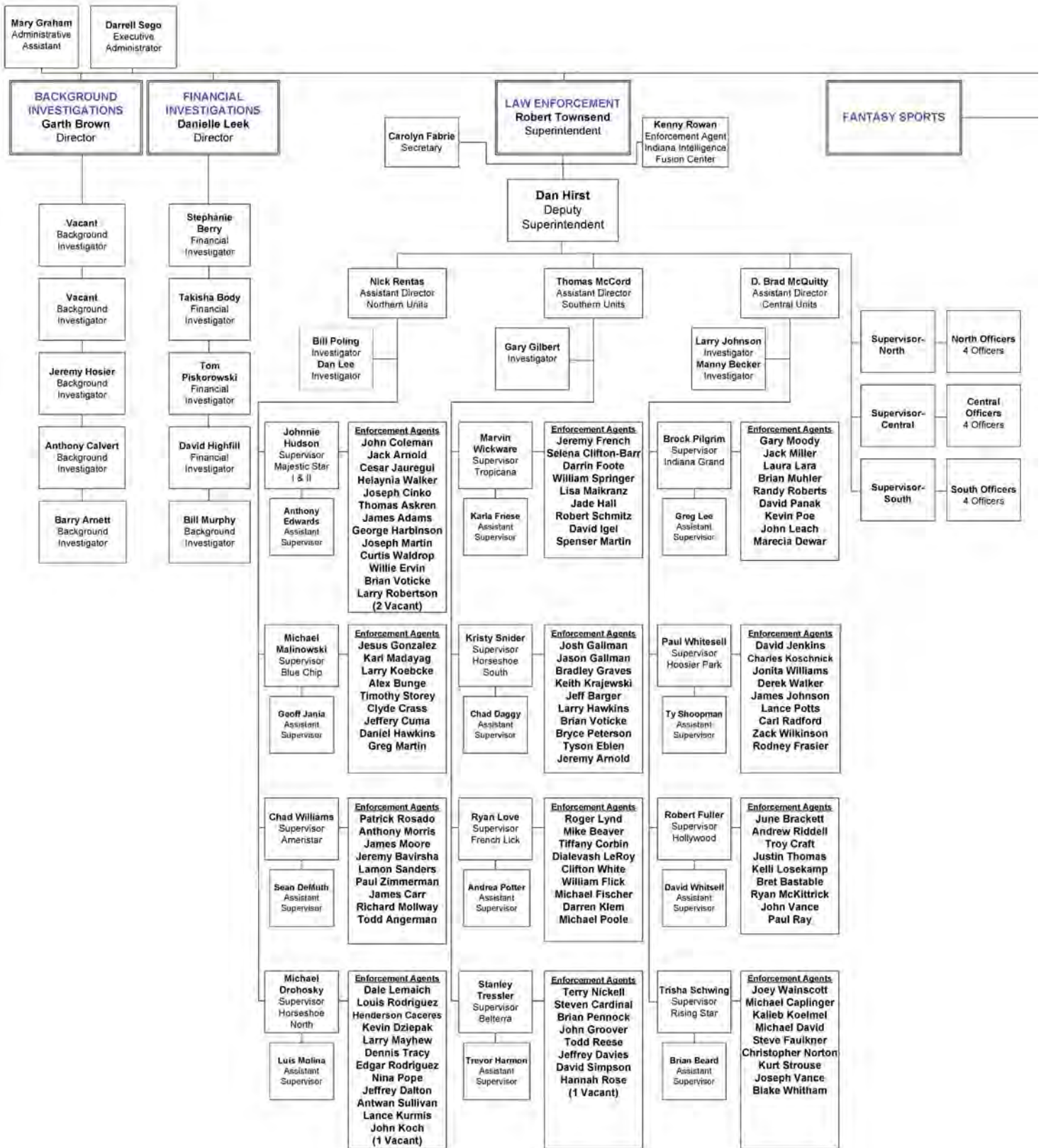
The table below indicates spending in each category in CY 2017. Not reflected in the chart, but of importance to note, is that casinos spent \$128.9 million with Indiana firms, including non-M/WBE, during this period.

<u>Purchase Type</u>	<u>Amount</u>	<u>MBE Spend</u>	<u>WBE Spend</u>
Construction	\$56,659,648.26	9.05%	12.87%
Procurement	\$219,651,201.00	8.76%	9.15%
Professional Services	\$31,924,724.42	12.63%	7.93%
Non-Professional Services	\$48,835,697.49	8.55%	15.74%
<u>TOTAL</u>	\$357,071,271.17		

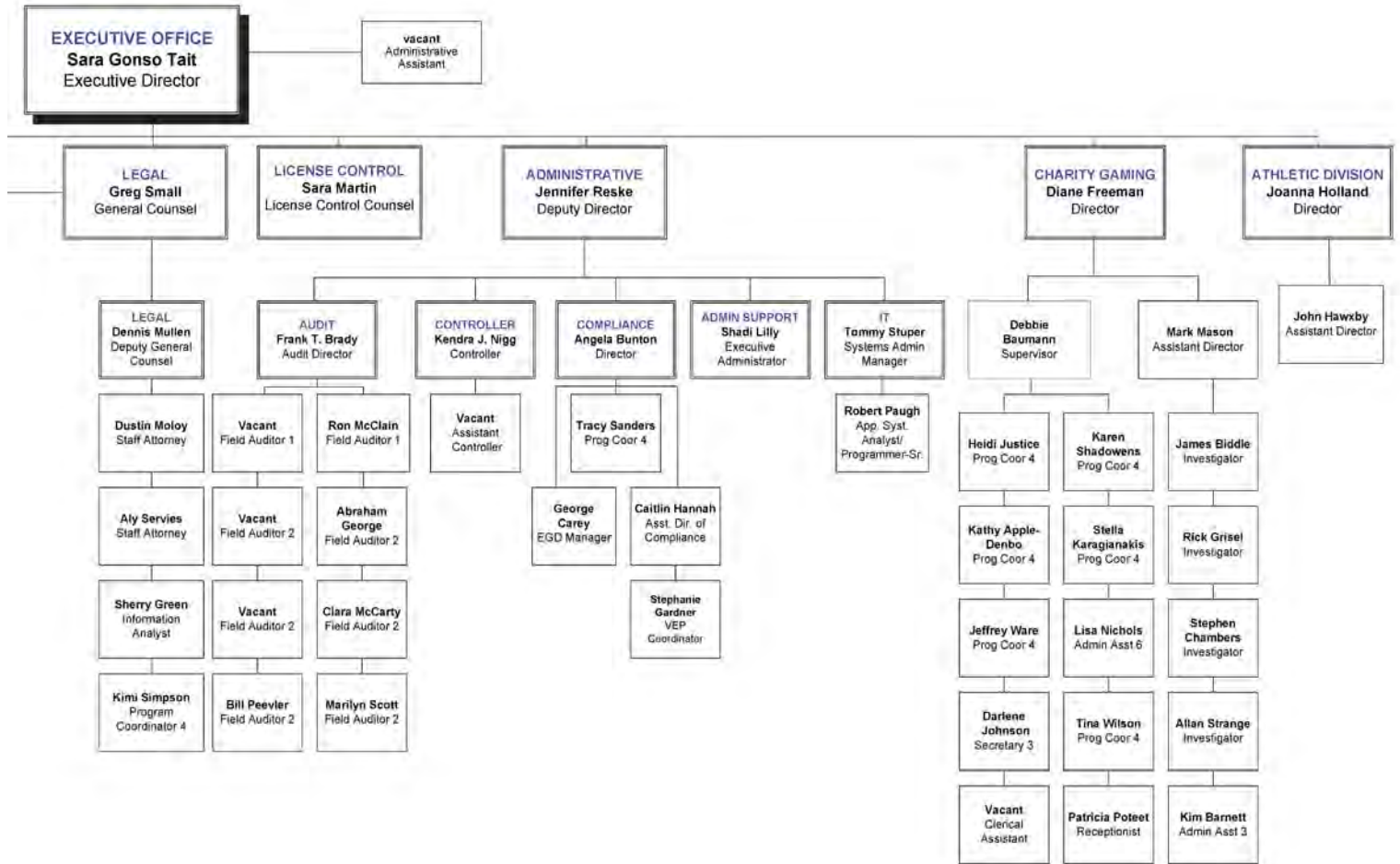


Jennifer Reske
Deputy Director

ORGANIZATIONAL CHART



ORGANIZATIONAL CHART



As of: June 29, 2018



Divisions



DIVISION STATISTICS

LEGAL DIVISION

Occupational Licensing

Temporary Licenses Issued	3,807
Permanent Licenses Issued	3,356
License Renewals	10,111
Permanent License Revocations	1
Application Denials	22
Felony Waivers	1
Felony Waivers Granted	0
Settlements in Lieu of Disciplinary Actions	12

Supplier Licensing

Suppliers License Inquiries Reviewed	8
Permanent Suppliers License Granted	1
Renewal of Suppliers License	27
Temporary Suppliers License Granted	1
Expired Suppliers Licenses	2

Junket Registration

Junket Operator Certificates Issued	4
Junketeer Certificates Issued	4
Total Registered Junket Operators	24
Total Registered Junketeers	25

Exclusion Statistics

Patrons Excluded	79
Exclusion Appeals	4
Removals from Exclusion List	2
Actions For Civil Penalty	2
Civil Penalty Collected	\$6,295
Currently on Exclusion List	738

Record Requests Statistics

Public Record Requests Received	68
Number of Documents Released pertaining to the records requests	1,101

CHARITY GAMING DIVISION

Charity Gaming *

Licenses Issued	2,994
Non-Licensed Events	2,067
Affiliate Events	170
Qualified Organizations	3,906
Qualified Distributors	29
Qualified Manufactures	16
Compliance Investigations Conducted	213
Gross Income Reported	\$425,689,419
Licensing Fees Collected	\$3,987,758
Prize Payouts	\$334,422,390
Penalties	\$62,228

COMPLIANCE DIVISION

Table Games

New Table Games Reviewed	4
New Table Games Approved	6
New Table Games Pending	6
Table Shipments Approved	210
Layout Schematics Approved	130

Promotions / Tournaments

Received	2,146
Reviewed	1,710
Approved	434
Disapproved	2
Pending	0

The Commission issued 293 recommendations on waiver requests and disciplinary actions against casino and supplier licensees with \$1,680,300 levied in fines.

ENFORCEMENT DIVISION

Enforcement

Regulatory Investigations	2,257
Criminal Investigations	2,378
Individuals Charged	630

GAMING CONTROL DIVISION

Illegal Gambling

Criminal Investigations	132
Inspections Conducted	4,335
Illegal Gambling Devices Confiscated	59

BACKGROUND/FINANCIAL INVESTIGATIONS DIVISION

9,748 hours were logged and the division maintained a billable rate of 65%.

Investigations

Level 1 Investigations	255
Level 2 Investigations	2,114
Level 3 Investigations	1,560

ATHLETIC DIVISION

Boxing

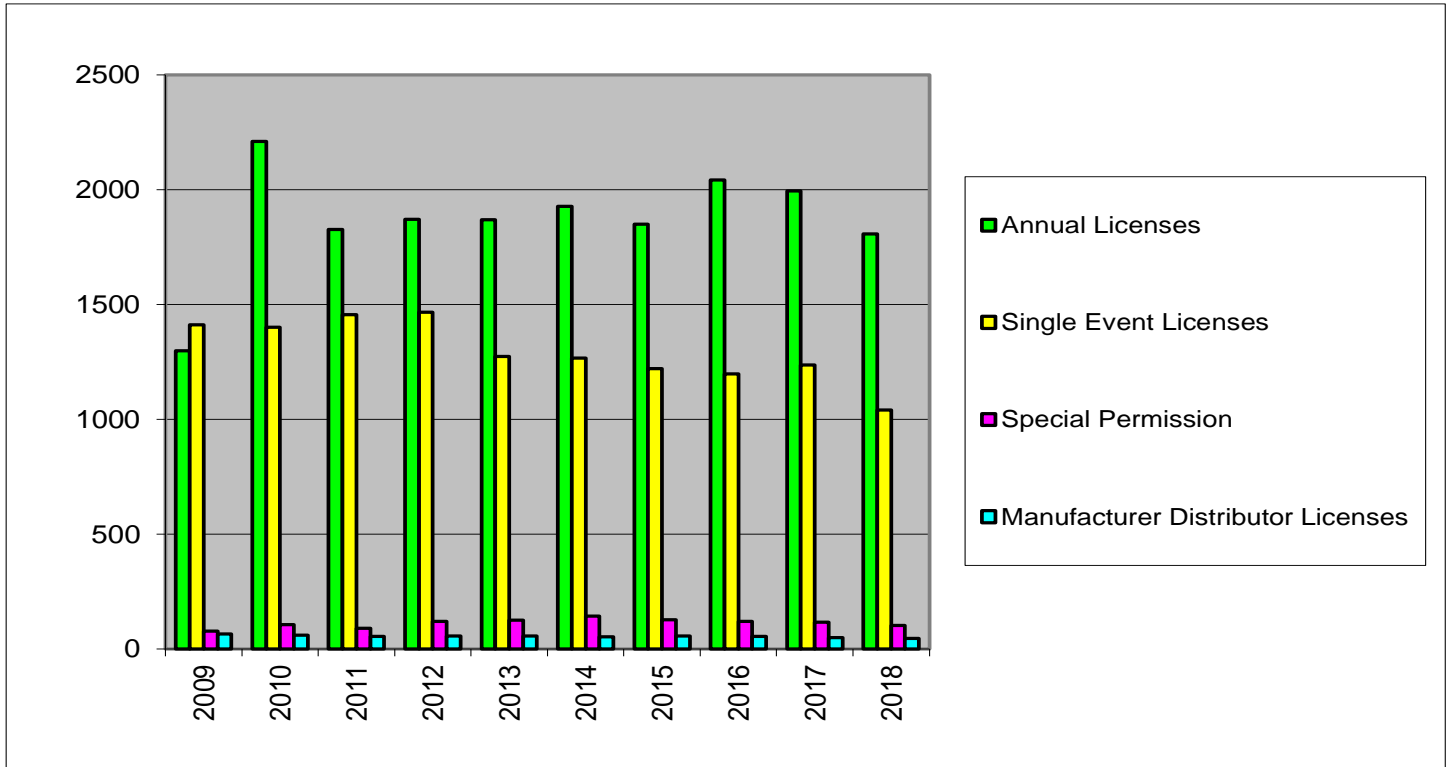
Judges Issued	15
Managers Issued	3
Promoters Issued	4
Referees Issued	7
Seconds Issued	105
Timekeepers Issued	4
Trainers Issued	3
Professional Boxers Issued	178
Professional Boxing Events	10

Mixed Martial Arts

Amateur MMA Sanctioning Bodies	1
Judges Issued	16
Managers Issued	2
Matchmaker	1
Promoters Issued	5
Referees Issued	7
Seconds Issued	190
Timekeepers Issued	3
Trainers Issued	2
Professional Mixed Martial Artists	174
Event Physicians Issued	4
MMA National ID's Issued	98
Mixed Martial Arts Pro-Am Events	13
Mixed Martial Arts Amateur Events	3

* These statistics will change as not all financial reports have been received and processed for this period.

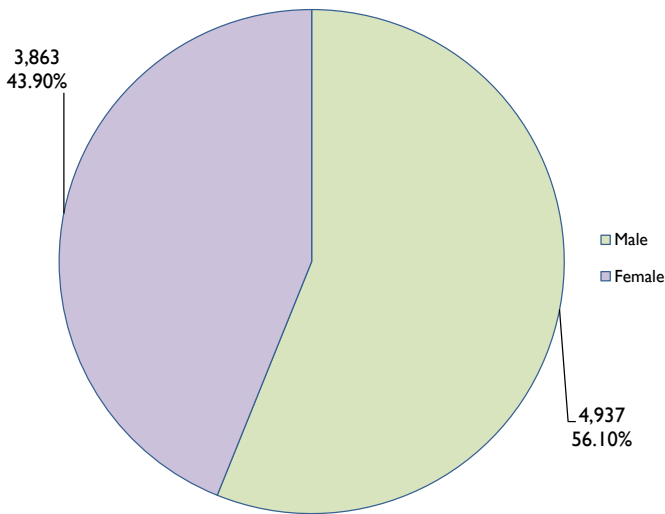
Figure 1. Charity Gaming Licenses Issued



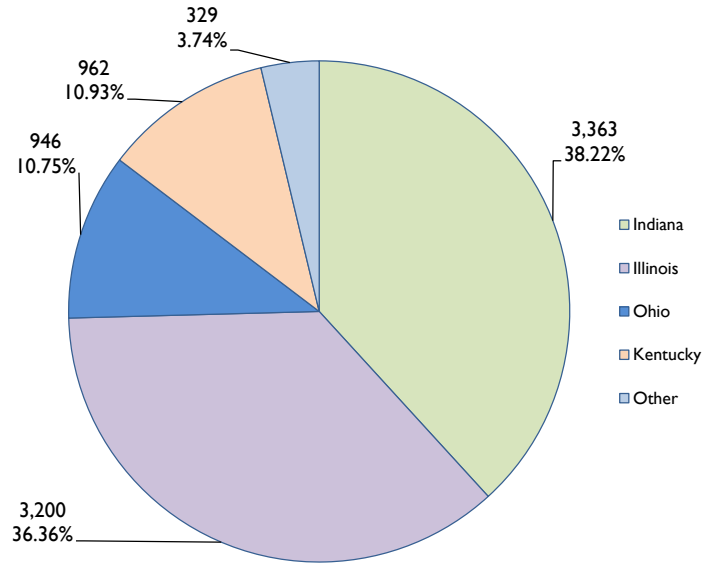
VEP Statistics

There were **5,773** active members from thirty-six different states and two from Canada in the Voluntary Exclusion Program as of July 1, 2018. The graphs below display the program participants, as categorized by age, gender, home state and length of exclusion. In FY 2018, 81 forfeitures were approved by the Commission and resulted in approximately \$112,692 in forfeitures.

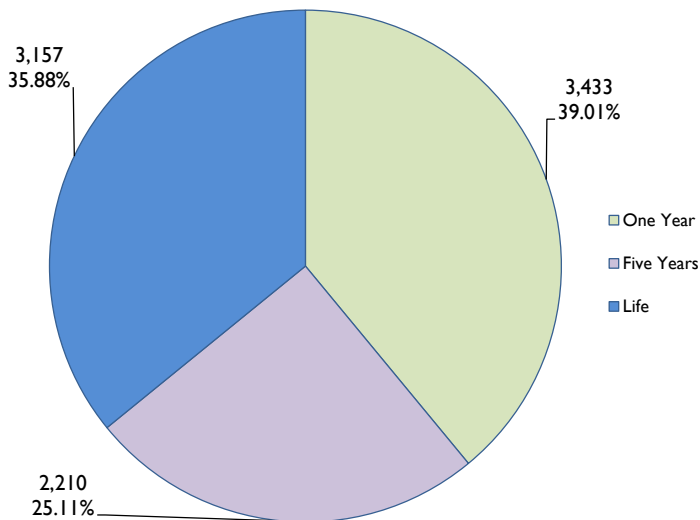
Member Gender



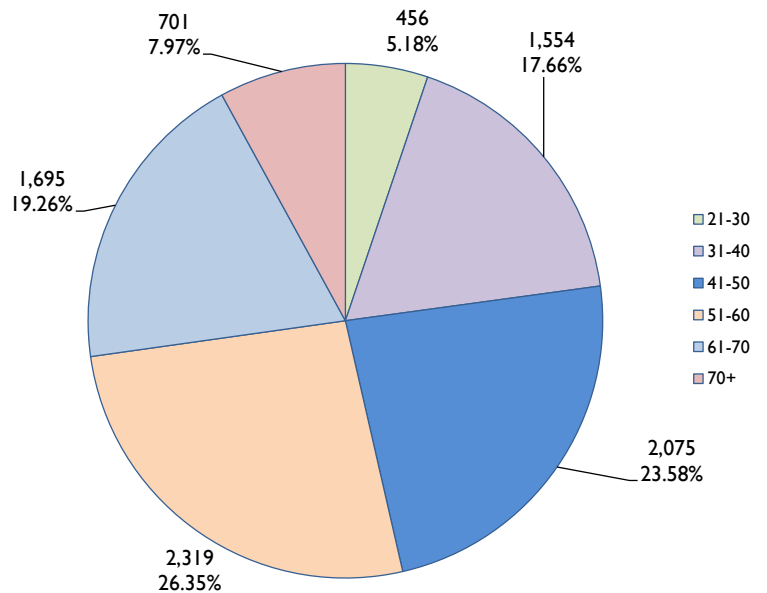
Member State



Member Exclusion Length



Member Age





Indiana Casinos



INDIANA CASINO LOCATIONS



AMERISTAR CASINO

AMERISTAR CASINO ★ HOTEL

General Manager:

Matthew Schuffert

Address:

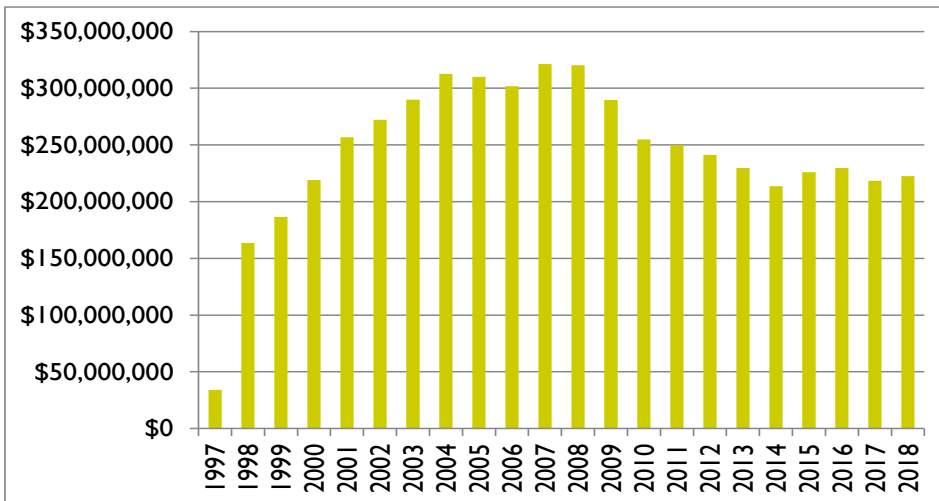
777 Ameristar Blvd.
East Chicago, Indiana 46312

Website:

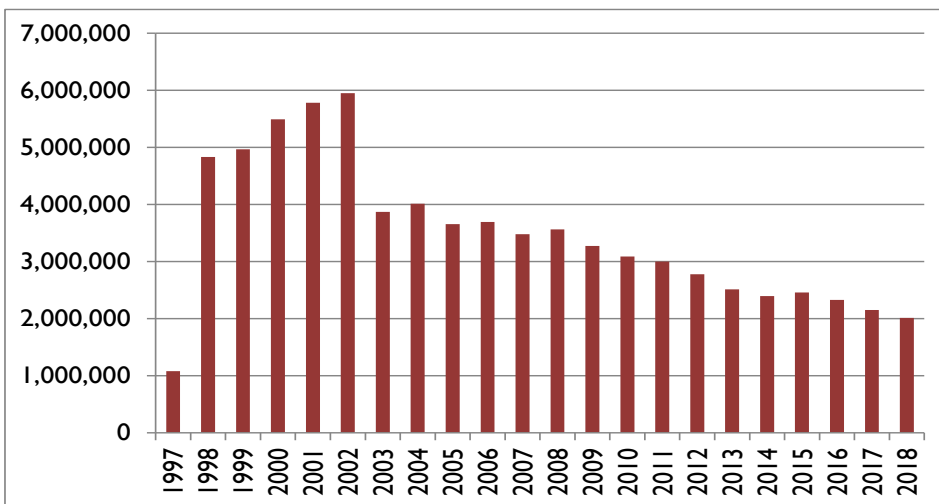
www.ameristar.com/east_chicago.aspx



Yearly Win Totals



Yearly Admission Totals



Date Opened: April 18, 1997

Gaming Space: 53,492 Square Feet

Electronic Gaming Devices: 1,492

Table Gaming Positions: 539

Restaurants: 4

Hotel: 290 Rooms

Admissions: 2,011,423

Total Taxes: \$64,002,701

LDA Payments: \$7,015,299

Total Employment: 1,261

Minority Employment: 67.33%

County Employment: 72.40%

Indiana Employment: 81.44%

BELTERRA CASINO



General Manager:

Sue Ascanio

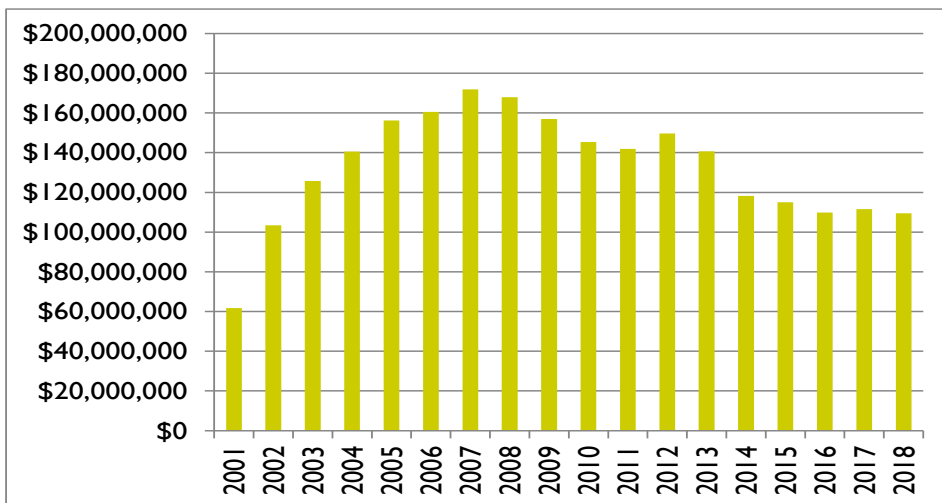
Address:

777 Belterra Dr.
Florence, Indiana 47020

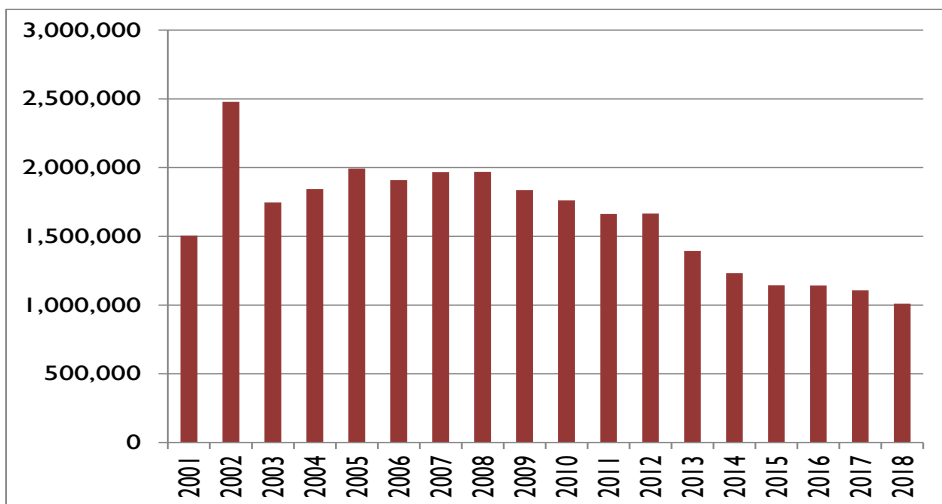
Website:

www.belterracasino.com

Yearly Win Totals



Yearly Admission Totals



Date Opened: October 27, 2000

Gaming Space: 47,000 Square Feet

Electronic Gaming Devices: 1,188

Table Gaming Positions: 302

Restaurants: 6

Hotel: 608 rooms

Admissions: 1,009,684

Total Taxes: \$28,289,278

LDA Payments: \$1,185,797

Total Employment: 920

Minority Employment: 15.54%

County Employment: 83.92%

Indiana Employment: 60.84%

BLUE CHIP CASINO



General Manager:

Lief Erickson

Address:

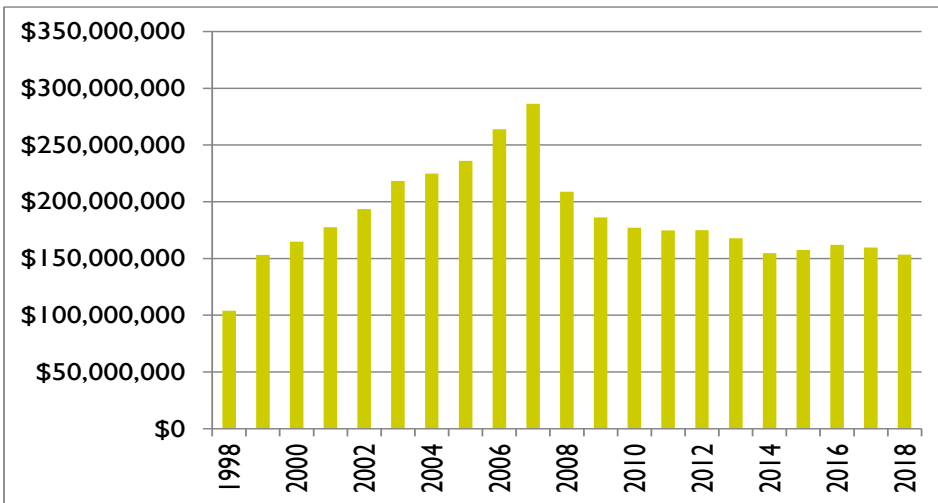
777 Blue Chip Drive
Michigan City, Indiana 46360

Website:

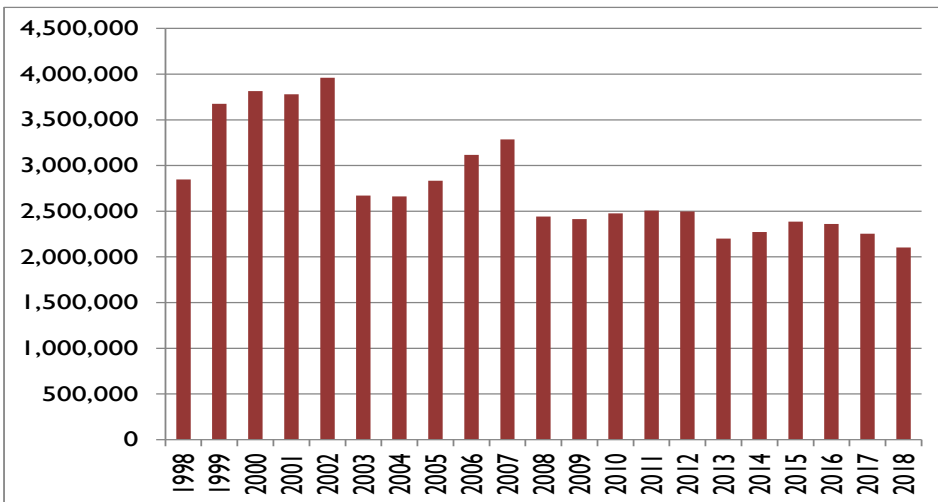
www.bluechipcasino.com



Yearly Win Totals



Yearly Admission Totals



Date Opened: April 18, 1997

Gaming Space: 65,000 Square Feet

Electronic Gaming Devices: 1,679

Table Gaming Positions: 401

Restaurants: 7

Hotel: 486 rooms

Admissions: 2,103,663

Total Taxes: \$42,717,542

LDA Payments: \$398,892

Total Employment: 992

Minority Employment: 31.90%

County Employment: 62.10%

Indiana Employment: 96.10%

FRENCH LICK RESORT CASINO



General Manager:

Chris Leininger

Address:

8670 West State Road 56
French Lick, Indiana 47432

Website:

www.frenchlick.com/gaming



Date Opened: November 1, 2006

Gaming Space: 49,719 Square Feet

Electronic Gaming Devices: 926

Table Gaming Positions: 274

Restaurants: 13

Hotel: 686 rooms

Admissions: N/A

Total Taxes: \$18,376,843

LDA Payments: \$2,594,557

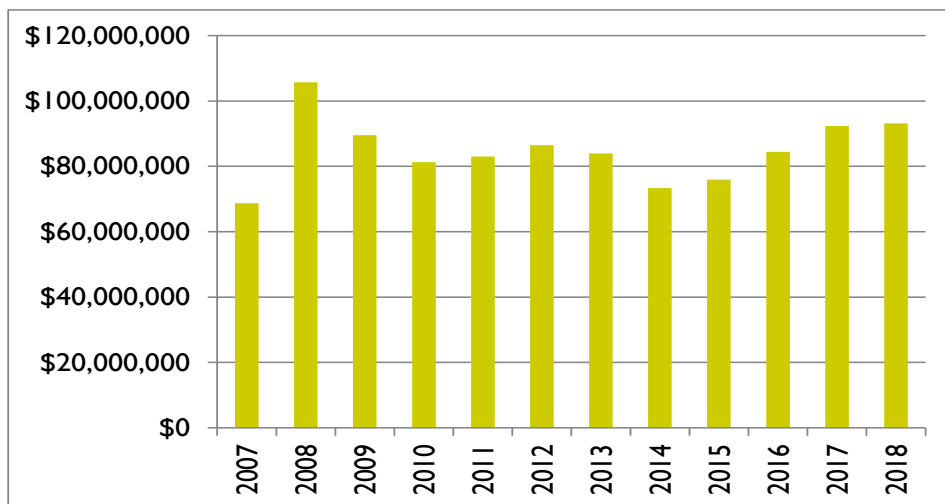
Total Employment: 1,651

Minority Employment: 8.00%

County Employment: 67.00%

Indiana Employment: 99.00%

Yearly Win Totals



TROPICANA EVANSVILLE



General Manager:

John Chaszar

Address:

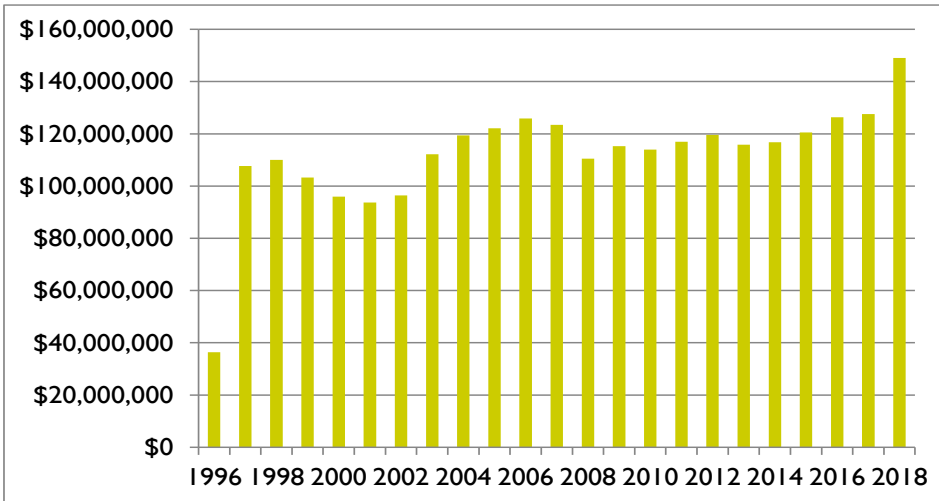
421 N.W. Riverside Drive
Evansville, Indiana 47708

Website:

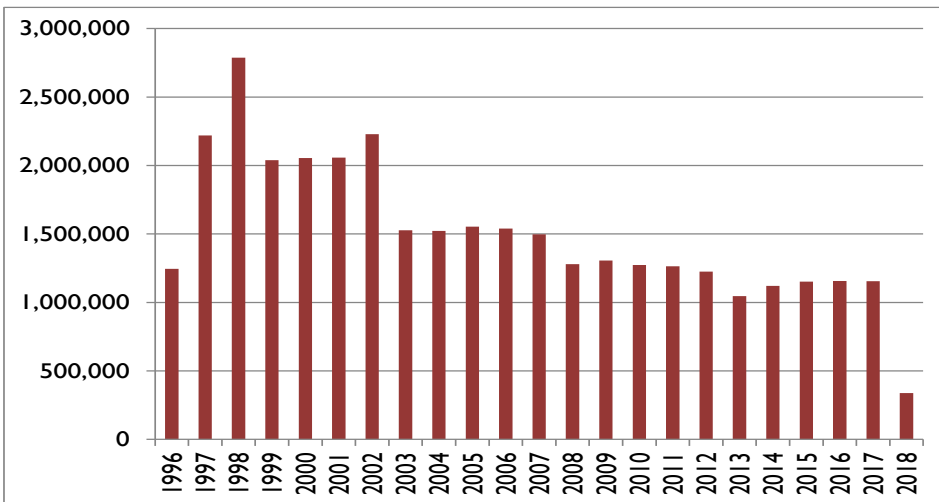
www.tropevansville.com



Yearly Win Totals



Yearly Admission Totals



Date Opened: December 8, 1995

Gaming Space: 40,724 Square Feet

Electronic Gaming Devices: 1,137

Table Gaming Positions: 316

Restaurants: 5

Hotel: 339 rooms

Admissions: 338,751*

Total Taxes: \$39,414,082

LDA Payments: \$7,277,296

Total Employment: 801

Minority Employment: 20.22%

County Employment: 73.28%

Indiana Employment: 89.39%

* Per HEA 1350, effective 10/19/2017 Tropicana no longer reports admissions.

In FY2018 Tropicana paid \$3,217,250 in Supplemental Wagering Tax.

HOLLYWOOD CASINO



General Manager:

Brad Hirsch

Address:

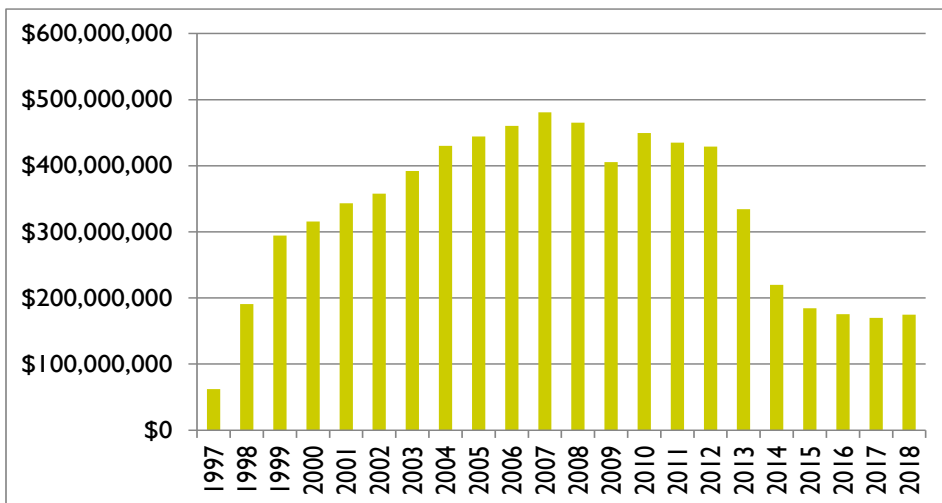
777 Hollywood Blvd.
Lawrenceburg, Indiana 47025

Website:

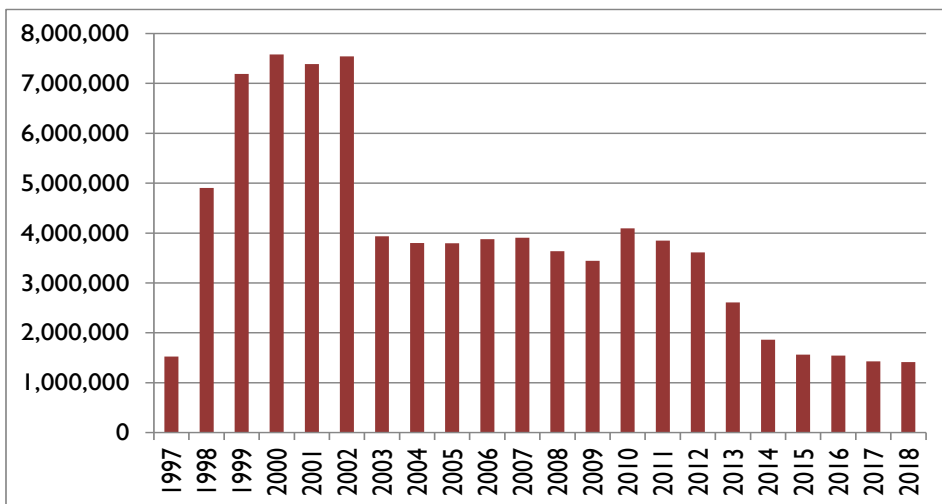
www.hollywoodindiana.com



Yearly Win Totals



Yearly Admission Totals



Date Opened: December 13, 1996

Gaming Space: 175,000 Square Feet

Electronic Gaming Devices: 1,390

Table Gaming Positions: 589

Restaurants: 6

Hotel: 300 rooms

Admissions: 1,413,717

Total Taxes: \$47,948,946

LDA Payments: \$8,877,114

Total Employment: 918

Minority Employment: 5.80%

County Employment: 46.40%

Indiana Employment: 60.50%

HOOSIER PARK CASINO



General Manager:

Michael Facenda

Address:

4500 Dan Patch Circle
Anderson, Indiana 46013

Website:

www.hoosierpark.com



Date Opened: May 29, 2008

Gaming Space: 54,000 Square Feet

Electronic Gaming Devices: 1,827

Table Gaming Positions: N/A

Restaurants: 7

Hotel: N/A

Admissions: N/A

Total Taxes: \$50,126,049

LDA Payments: N/A

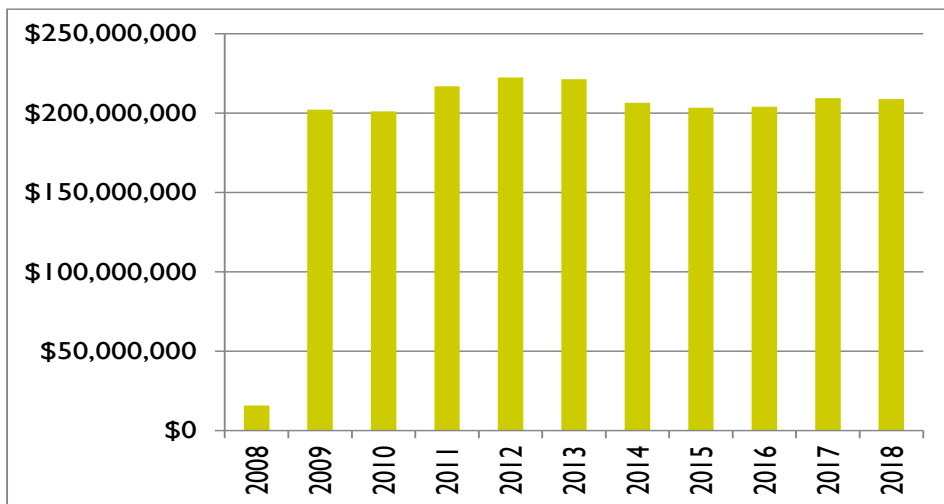
Total Employment: 795

Minority Employment: 23.08%

County Employment: 65.71%

Indiana Employment: 99.37%

Yearly Win Totals



HORSESHOE CASINO HAMMOND



General Manager:

Dan Nita

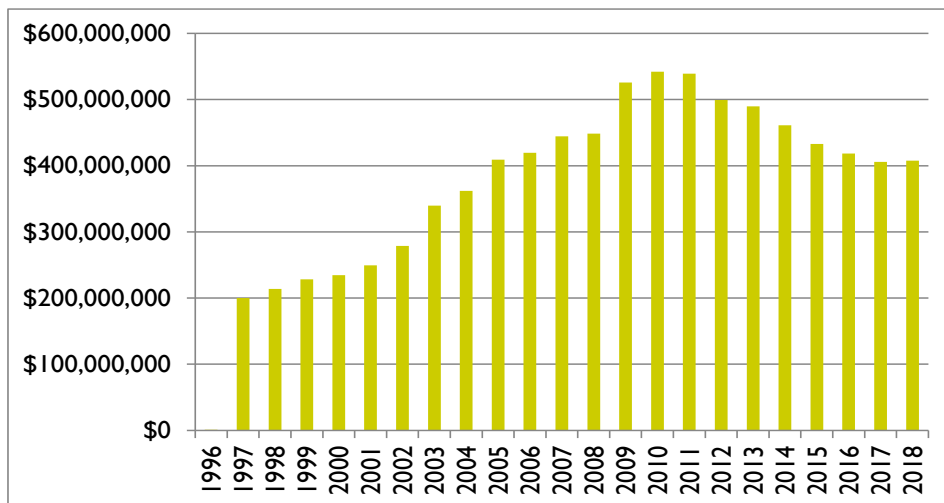
Address:

777 Casino Center Dr.
Hammond, Indiana 46320

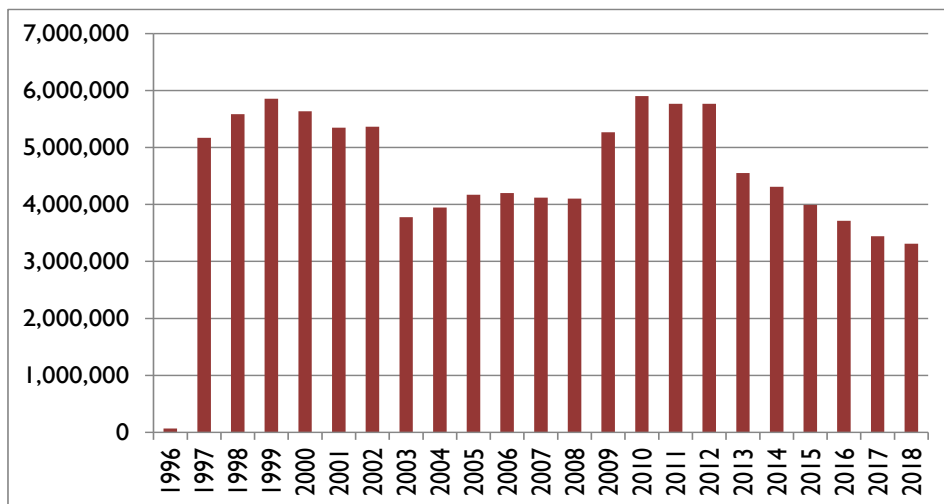
Website:

www.horseshoehammond.com

Yearly Win Totals



Yearly Admission Totals



Date Opened: June 29, 1996

Gaming Space: 108,000 Square Feet

Electronic Gaming Devices: 2,289

Table Gaming Positions: 1,104

Restaurants: 8

Hotel: N/A

Admissions: 3,309,619

Total Taxes: \$135,423,827

LDA Payments: \$25,488,182

Total Employment: 1,846

Minority Employment: 64.20%

County Employment: 63.90%

Indiana Employment: 69.80%

HORSESHOE CASINO SOUTHERN



General Manager:

Bradley Seigel

Address:

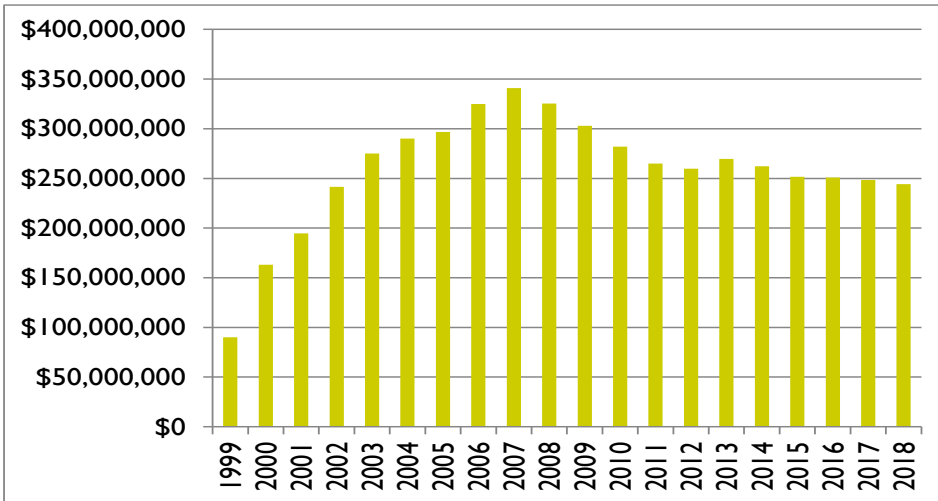
11999 Casino Center Dr. S.E.
Elizabeth, Indiana 47117

Website:

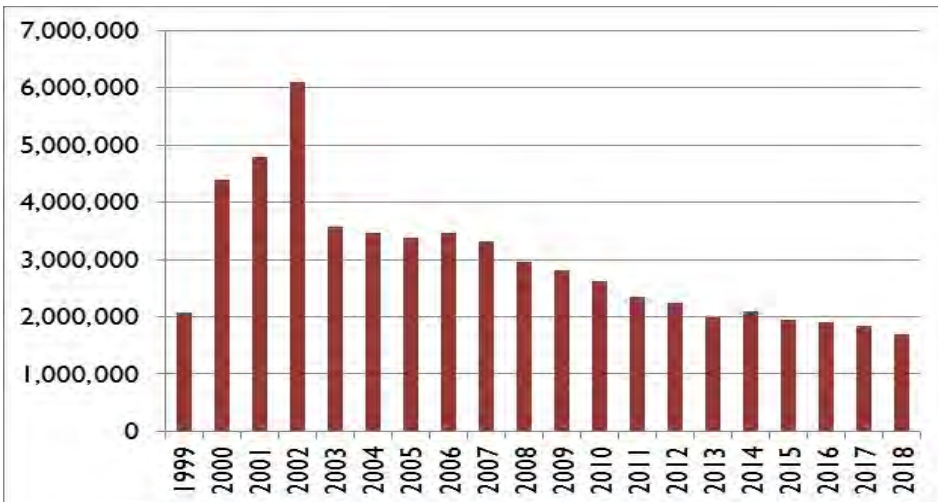
www.horseshoe-indiana.com



Yearly Win Totals



Yearly Admission Totals



Date Opened: November 20, 1996

Gaming Space: 86,600 Square Feet

Electronic Gaming Devices: 1,582

Table Gaming Positions: 738

Restaurants: 8

Hotel: 503 Rooms

Admissions: 1,688,314

Total Taxes: \$73,382,216

LDA Payments: \$10,800,670

Total Employment: 1,323

Minority Employment: 19.00%

County Employment: 20.00%

Indiana Employment: 67.00%

INDIANA GRAND CASINO



General Manager:

Jahnae Erpenbach

Address:

4300 N. Michigan Road
Shelbyville, Indiana 46176

Website:

www.indianagrand.com



Date Opened: June 6, 2008

Gaming Space: 83,800 Square Feet

Electronic Gaming Devices: 2,089

Table Gaming Positions: N/A

Restaurants: 3

Hotel: N/A

Admissions: N/A

Total Taxes: \$65,431,940

LDA Payments: N/A

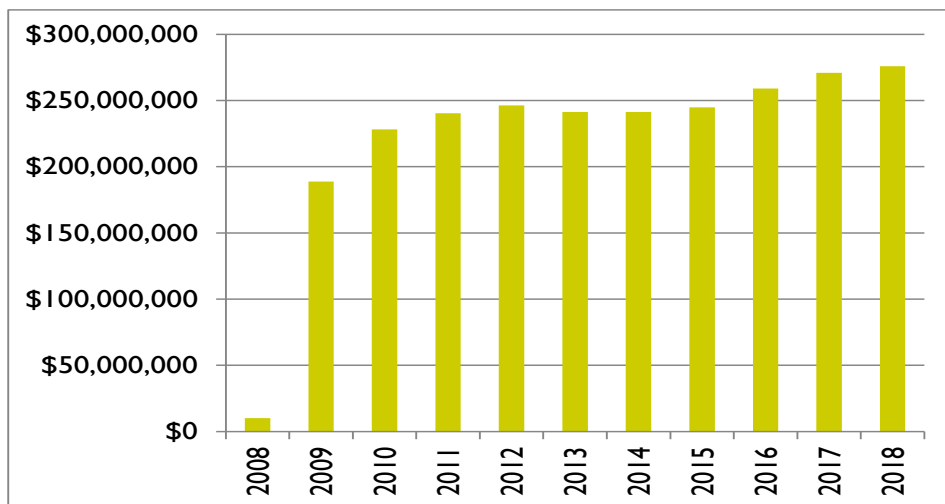
Total Employment: 978

Minority Employment: 10.63%

County Employment: 44.17%

Indiana Employment: 96.52%

Yearly Win Totals



MAJESTIC STAR CASINO I



General Manager:

Barry Cregan

Address:

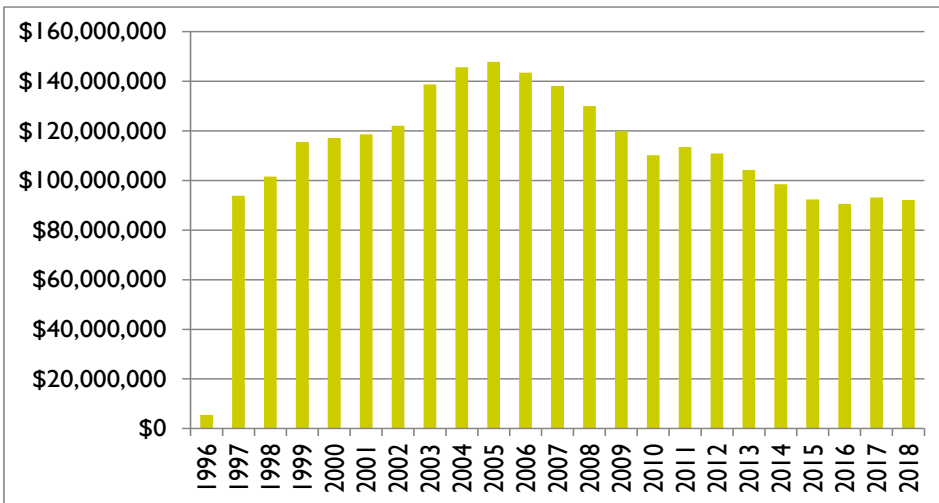
1 Buffington Harbor Dr.
Gary, Indiana 46406

Website:

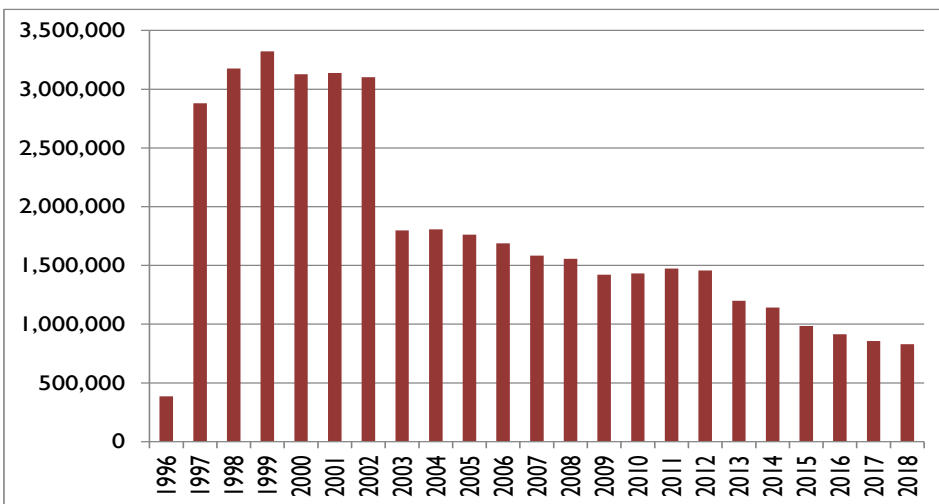
www.majesticstarcasino.com



Yearly Win Totals



Yearly Admission Totals



Date Opened: June 11, 1996

Gaming Space: 43,000 Square Feet

Electronic Gaming Devices: 842

Table Gaming Positions: 370

Restaurants: 6

Hotel: 300 rooms

Admissions: 830,050

Total Taxes: \$20,269,413

LDA Payments: \$3,000,000

Total Employment: 763

Minority Employment: 60.00%

County Employment: 81.00%

Indiana Employment: 90.00%

MAJESTIC STAR CASINO II



General Manager:

Barry Cregan

Address:

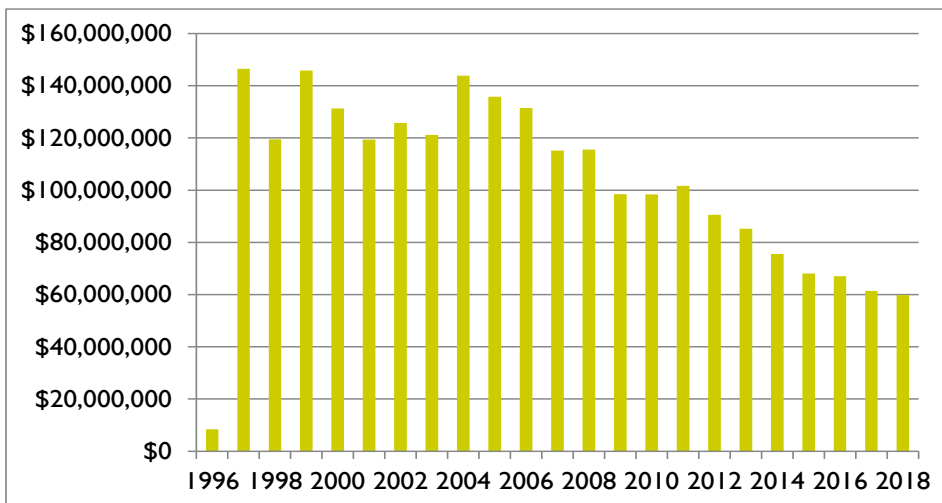
1 Buffington Harbor Dr.
Gary, Indiana 46406

Website:

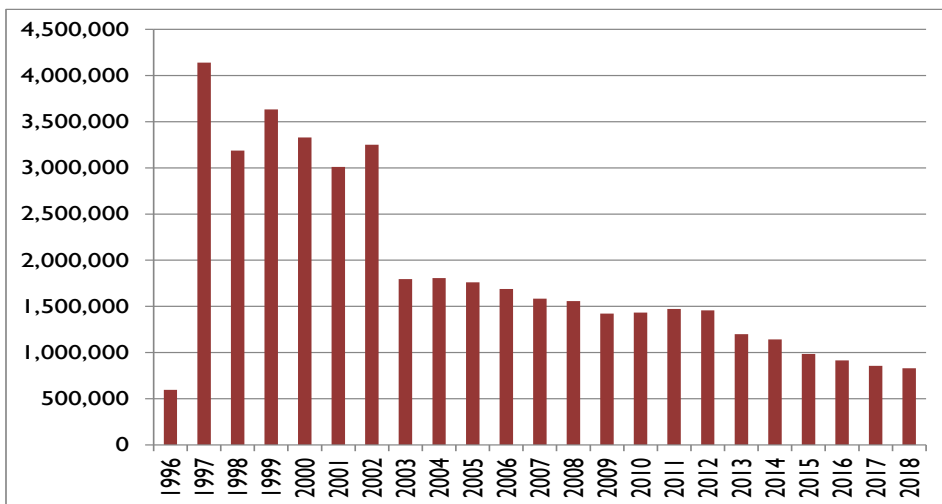
www.majesticstarcasino.com



Yearly Win Totals



Yearly Admission Totals



Date Opened: June 11, 1996

Gaming Space: 36,571 Square Feet

Electronic Gaming Devices: 833

Table Gaming Positions: 240

Restaurants: 6

Hotel: 300 rooms

Admissions: 830,050

Total Taxes: \$9,675,975

LDA Payments: \$3,000,000

Total Employment: 201

Minority Employment: 48.00%

County Employment: 77.00%

Indiana Employment: 90.00%

Rising Star Casino



General Manager:

John Sheldon

Address: 777 Rising Star Drive

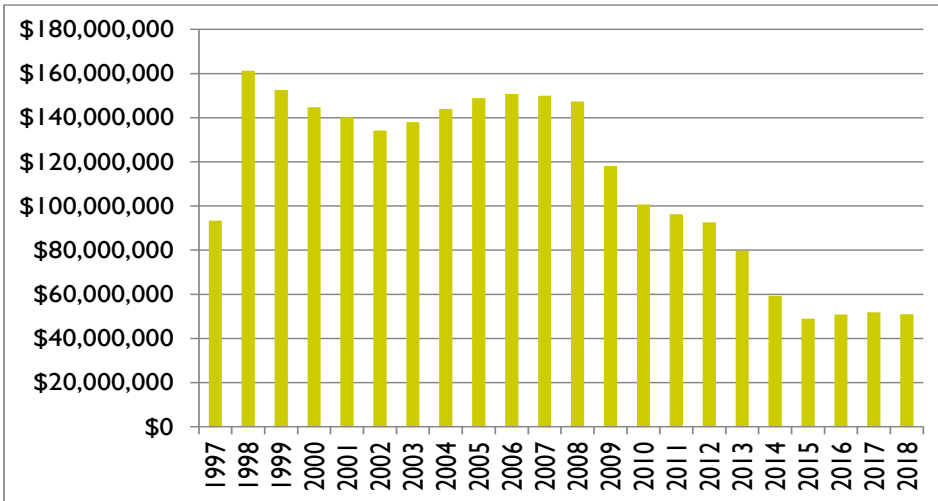
Rising Sun, Indiana 47040

Website:

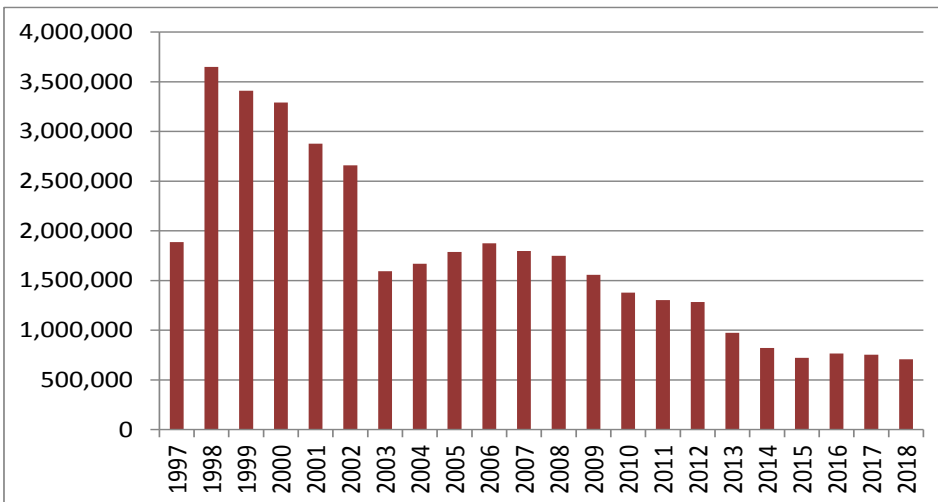
www.risingstarcasino.com



Yearly Win Totals



Yearly Admission Totals



Date Opened: October 4, 1996

Gaming Space: 40,000 Square Feet

Electronic Gaming Devices: 933

Table Gaming Positions: 181

Restaurants: 5

Hotel: 294 rooms

Admissions: 706,853

Total Taxes: \$7,351,116

LDA Payments: \$706,982

Total Employment: 568

Minority Employment: 3.80%

County Employment: 63.38%

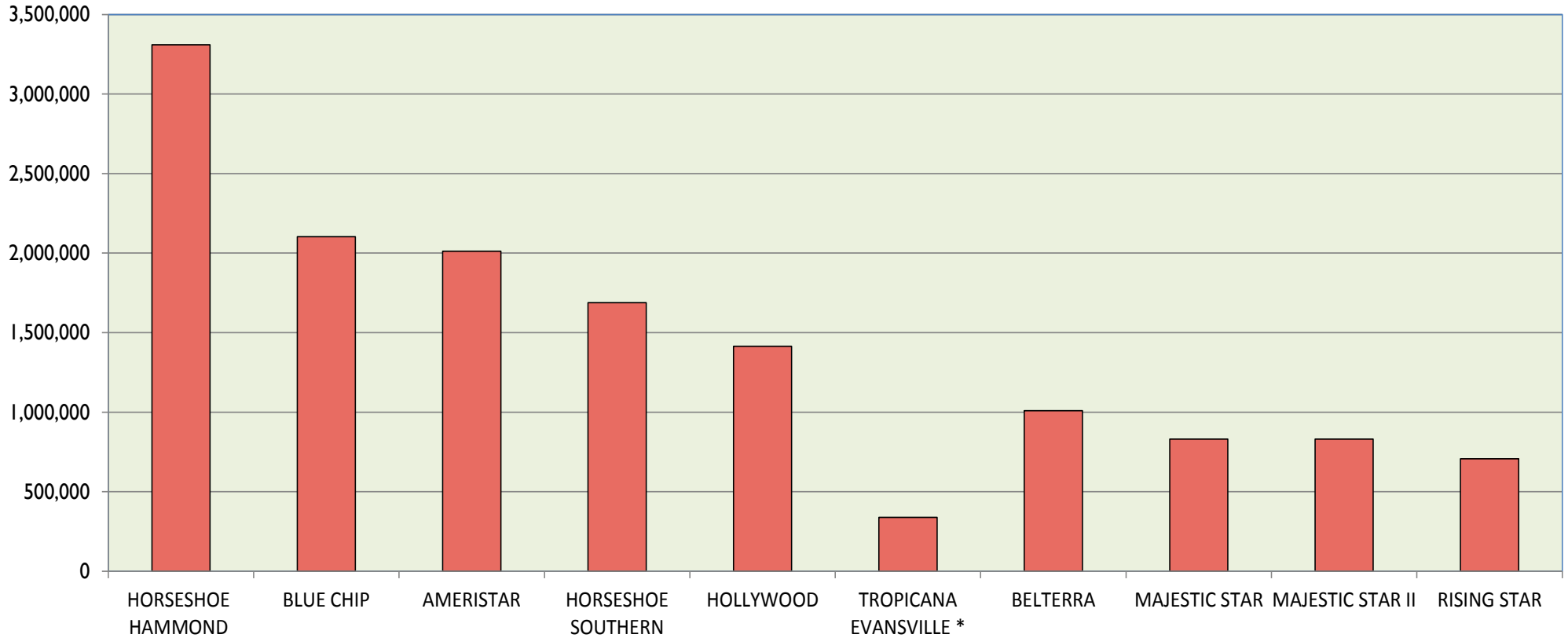
Indiana Employment: 90.32%



Appendix



2018 TOTAL ADMISSIONS PER CASINO

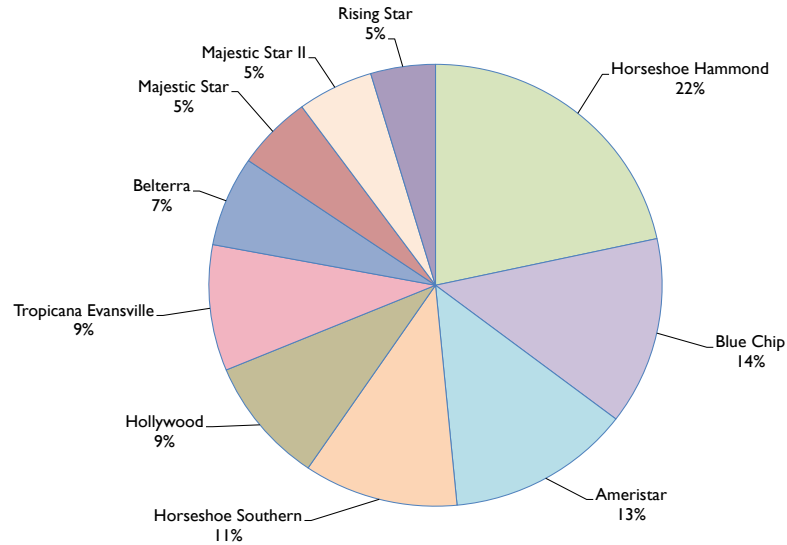


HORSESHOE HAMMOND	BLUE CHIP	AMERISTAR	HORSESHOE SOUTHERN	HOLLYWOOD	TROPICANA EVANSVILLE *	BELTERRA	MAJESTIC STAR	MAJESTIC STAR II	RISING STAR
3,309,619	2,103,663	2,011,423	1,688,314	1,413,717	338,751	1,009,684	830,050	830,050	706,853

* Per HEA 1350, effective 10/19/2017 Tropicana no longer reports admissions. In FY2018 Tropicana paid \$3,217,250 in Supplemental Wagering Tax.

Total Admissions: 14,242,124

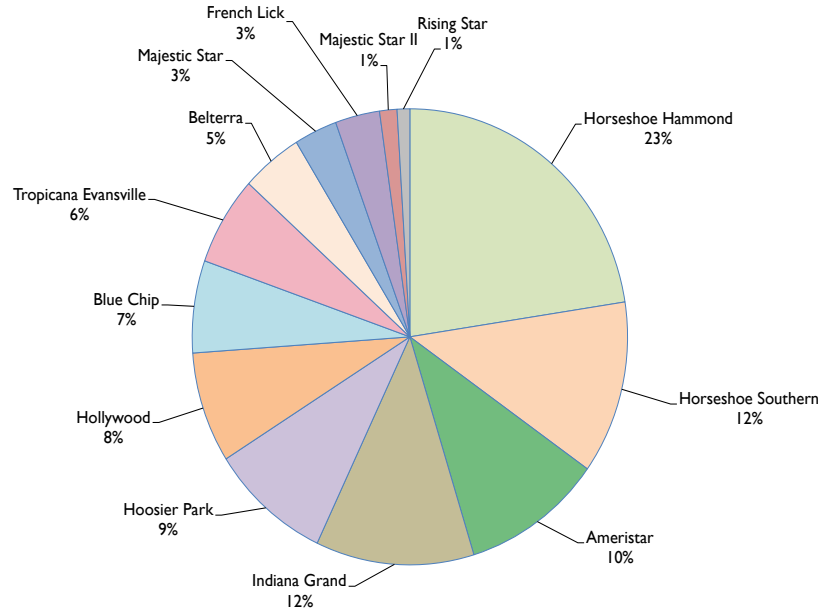
2018 ADMISSION TAX REPORTED



TAX REPORTED	HORSESHOE HAMMOND	BLUE CHIP	AMERISTAR	HORSESHOE SOUTHERN	HOLLYWOOD	TROPICANA EVANSVILLE *	BELTERRA	MAJESTIC STAR	MAJESTIC STAR II	RISING STAR	GRAND TOTAL
JULY	903,663	613,764	532,674	489,981	395,949	321,234	322,623	217,542	217,542	205,917	4,220,889
AUGUST	845,025	579,252	527,727	440,571	353,244	287,334	275,043	216,522	216,522	188,667	3,929,907
SEPTEMBER	864,072	572,949	497,937	449,964	372,399	280,620	271,602	216,810	216,810	193,671	3,936,834
OCTOBER	856,998	539,091	485,565	440,688	332,433	318,008	245,691	205,119	205,119	174,171	3,802,883
NOVEMBER	832,827	509,769	443,097	433,767	323,724	358,313	239,889	193,629	193,629	174,180	3,702,824
DECEMBER	796,197	490,833	468,708	460,863	371,469	360,064	246,252	193,668	193,668	183,552	3,765,274
JANUARY	764,145	427,647	481,218	384,897	305,919	310,033	198,039	190,011	190,011	136,614	3,388,534
FEBRUARY	723,828	439,638	454,752	305,556	359,622	393,779	184,101	185,274	185,274	142,167	3,373,991
MARCH	912,357	588,285	596,832	411,342	399,861	471,205	285,609	235,227	235,227	188,601	4,324,546
APRIL	820,572	520,572	516,507	424,839	341,319	384,578	244,629	215,907	215,907	174,894	3,859,724
MAY	796,644	508,689	515,181	411,291	331,035	385,591	250,668	216,303	216,303	174,276	3,805,981
JUNE	812,529	520,500	514,071	411,183	354,177	362,746	264,906	204,138	204,138	183,849	3,832,237
TOTAL	\$ 9,928,857	\$ 6,310,989	\$ 6,034,269	\$ 5,064,942	\$ 4,241,151	\$ 4,233,504	\$ 3,029,052	\$ 2,490,150	\$ 2,490,150	\$ 2,120,559	\$ 45,943,623

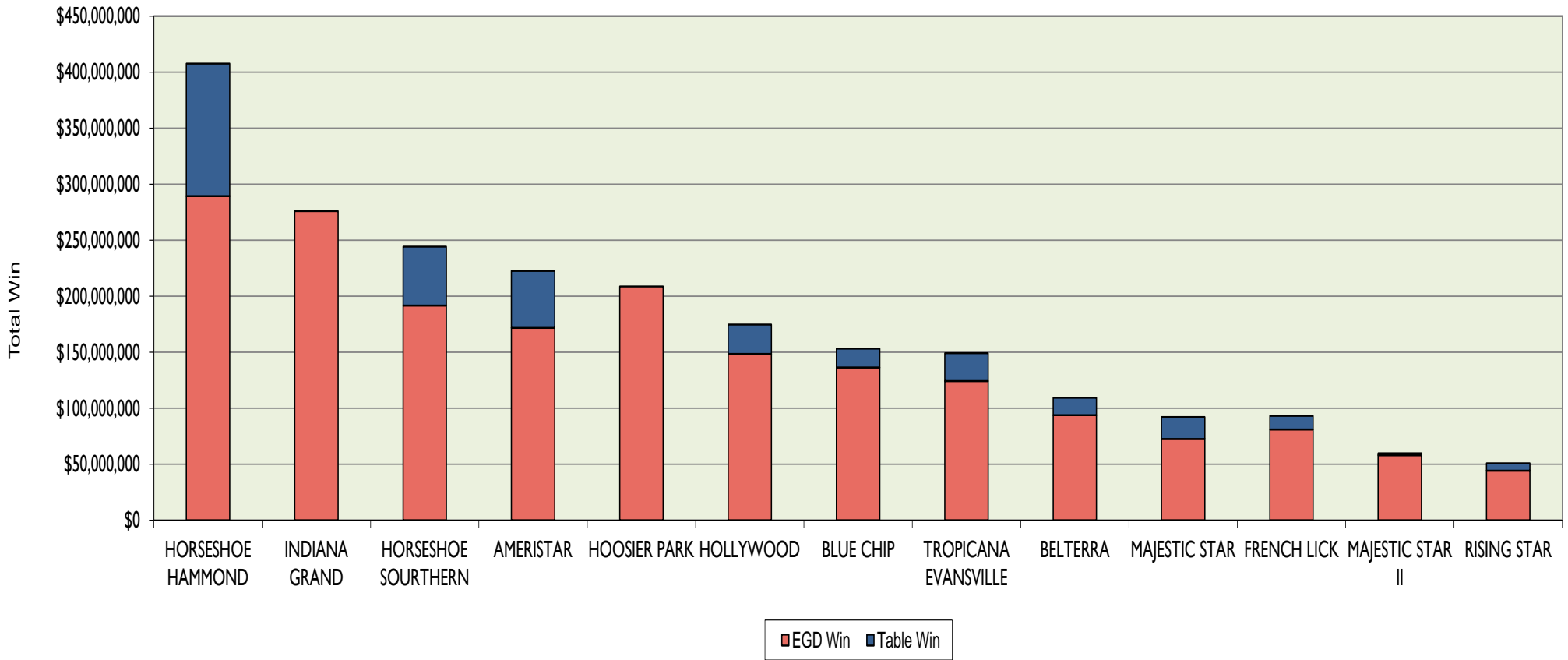
* In FY2018 Tropicana paid \$3,217,250 in Supplemental Wagering Tax.

2018 WAGERING TAX REPORTED



TAX REPORTED	HORSESHOE HAMMOND	HORSESHOE SOUTHERN	AMERISTAR	INDIANA GRAND	HOOSIER PARK	HOLLYWOOD	BLUE CHIP	TROPICANA EVANSVILLE	BELTERRA	MAJESTIC STAR	FRENCH LICK	MAJESTIC STAR II	RISING STAR	GRAND TOTAL
JULY	5,328,928	3,104,002	2,563,869	4,675,209	3,910,168	2,213,837	1,913,772	1,614,008	1,520,587	987,509	1,123,855	191,019	204,260	29,351,022
AUGUST	7,152,621	3,668,192	2,687,056	4,510,906	3,619,987	2,106,987	1,816,329	1,446,358	1,408,497	846,196	1,041,512	192,000	187,043	30,683,684
SEPTEMBER	9,332,074	4,646,344	3,158,790	4,673,881	3,948,574	2,853,221	2,519,774	1,835,756	1,583,374	902,959	1,102,625	197,411	191,160	36,945,942
OCTOBER	9,933,759	5,096,562	3,806,183	4,461,224	3,769,695	2,808,812	2,344,641	2,132,209	1,609,341	896,794	1,202,359	180,784	183,711	38,426,073
NOVEMBER	10,366,486	6,230,246	4,217,491	4,916,027	3,567,913	3,079,825	2,749,002	2,555,521	1,719,808	1,153,300	1,251,647	181,957	179,220	42,168,444
DECEMBER	11,003,309	6,144,394	4,999,699	5,663,686	3,588,437	3,896,260	2,833,463	3,000,530	2,087,139	1,362,463	1,433,636	203,744	193,820	46,410,580
JANUARY	11,714,109	5,515,600	5,106,192	4,954,686	3,457,659	3,726,069	2,848,993	2,617,201	1,826,667	1,260,309	1,102,333	601,005	273,907	45,004,730
FEBRUARY	10,934,368	4,389,828	4,815,496	5,595,405	4,537,404	4,406,288	3,295,755	3,937,790	1,686,106	1,463,822	1,550,511	916,513	644,370	48,173,656
MARCH	14,036,861	7,526,775	6,561,138	6,865,770	5,531,350	4,949,171	4,553,604	4,712,046	3,039,248	2,287,876	2,081,323	1,190,174	855,003	64,190,339
APRIL	12,703,291	7,246,887	6,967,937	5,787,364	4,768,147	4,175,459	3,884,160	3,845,783	2,805,356	2,218,896	1,867,192	1,060,268	766,733	58,097,474
MAY	11,759,836	7,666,415	6,547,097	6,142,287	4,683,048	4,477,746	3,825,479	3,855,913	3,012,312	2,161,025	2,034,744	1,086,533	695,789	57,948,225
JUNE	11,229,329	7,082,032	6,537,483	7,185,495	4,743,667	5,014,120	3,821,583	3,627,464	2,961,792	2,238,115	2,585,105	1,184,419	855,540	59,066,143
TOTAL	\$125,494,971	\$68,317,275	\$57,968,432	\$65,431,941	\$50,126,050	\$43,707,795	\$36,406,553	\$35,180,578	\$25,260,226	\$17,779,264	\$18,376,844	\$7,185,826	\$5,230,558	\$556,466,312

2018 TOTAL WIN PER CASINO



	HORSESHOE HAMMOND	INDIANA GRAND	HORSESHOE SOUTHERN	AMERISTAR	HOOSIER PARK	HOLLYWOOD	BLUE CHIP	TROPICANA EVANSVILLE	BELTERRA	MAJESTIC STAR	FRENCH LICK	MAJESTIC STAR II	RISING STAR
TABLE GAME WIN	\$ 118,253,382	N/A	\$ 52,545,388	\$ 50,825,024	N/A	\$ 26,203,785	\$ 16,904,535	\$ 24,828,815	\$ 15,574,448	\$ 19,587,974	\$ 12,155,062	\$ 1,622,990	\$ 6,687,087
EGD WIN	\$ 289,498,200	\$ 275,956,046	\$ 191,764,248	\$ 171,674,791	\$ 208,706,038	\$ 148,472,797	\$ 136,373,935	\$ 124,243,820	\$ 93,853,192	\$ 72,593,237	\$ 80,996,749	\$ 58,177,181	\$ 44,223,817
TOTAL WIN	\$ 407,751,582	\$ 275,956,046	\$ 244,309,636	\$ 222,499,815	\$ 208,706,038	\$ 174,676,582	\$ 153,278,470	\$ 149,072,635	\$ 109,427,640	\$ 92,181,211	\$ 93,151,811	\$ 59,800,171	\$ 50,910,904

STATE-WIDE WIN - TABLE GAMES	\$345,188,490
STATE-WIDE WIN - EGD	\$1,896,534,051
TOTAL STATEWIDE WIN	\$2,241,722,541

2018 GAMING OPERATIONS SUMMARY

EGD'S	UNITS*	COIN IN	WIN
0	10	0	623,895
1 CENT	11,574	10,801,487,852	1,235,412,215
2 CENT	276	178,866,699	19,927,253
3 CENT	10	20,626,350	3,041,315
5 CENT	719	851,049,636	55,609,354
10 CENT	69	139,899,351	10,967,830
25 CENT	2,402	2,421,634,069	164,866,386
50 CENT	222	291,266,775	20,458,934
\$1	2,396	4,361,124,333	303,602,555
\$2	20	22,573,299	1,765,336
\$5	378	1,001,603,745	59,490,773
\$10	35	101,254,761	6,023,695
\$20	0	0	0
\$25	68	167,443,150	10,227,763
\$50	0	0	0
\$100	26	77,045,800	4,258,537
\$500	1	331,500	13,000
\$1,000	1	75,000	27,000
Other **	0	0	218,210
TOTAL	18,207	\$20,436,282,320	\$1,896,534,051

* As of June 30, 2018

** Tournament receipts

Totals may include minor variations due to rounding.

TABLE GAMES	UNITS*	DROP	WIN
Baccarat	85	429,728,953	70,352,701
Big Six	4	1,427,998	621,112
Blackjack/21	291	613,843,846	119,284,394
Craps	45	226,903,917	48,974,562
Non Traditional	2	136,641	42,631
Poker ***	92	199,292,474	52,761,396
Poker Room **	115	18,778,126	18,778,126
Roulette	43	125,578,737	31,924,799
Other****	1	0	2,448,769
TOTAL	678	\$1,615,690,692	\$345,188,490

* As of June 30, 2018

** Traditional Poker

*** Includes Caribbean Stud, Let It Ride, Pai Gow, 3 Card, Boston 5 Stud, 3-5-7, Wild Hold Em Fold Em, Crazy 4, and 2-2-1.

**** Tournament receipts

2018 SUMMARY OF TABLE GAME ACTIVITY

As reported for the year ended June 30, 2018

UNITS*	AMERISTAR	BELTERRA	BLUE CHIP	FRENCH LICK	HOLLYWOOD	HORSESHOE HAMMOND	HORSESHOE SOUTHERN	MAJESTIC STAR	MAJESTIC STAR II	RISING STAR	TROPICANA EVANSVILLE
Baccarat	24	0	2	1	9	27	4	12	n/a	n/a	2
Big Six	n/a	n/a	n/a	n/a	n/a	3	n/a	1	n/a	n/a	n/a
Black Jack	29	23	23	25	33	46	45	25	4	23	19
Craps	5	4	4	3	5	9	5	3	1	3	3
Non Traditional	1	n/a	n/a	n/a	n/a	1	n/a	n/a	n/a	n/a	n/a
Poker***	10	10	6	5	7	23	13	7	n/a	5	6
Poker Room**	n/a	2	8	n/a	19	34	30	n/a	14	n/a	8
Roulette	5	3	4	3	5	10	6	3	n/a	1	3
Other	n/a	n/a	1	n/a	n/a	n/a	n/a	n/a	n/a	n/a	n/a
TOTAL	74	42	48	37	78	153	103	51	19	32	41
DROP											
Baccarat	144,723,549	234,901	5,303,139	248,075	4,545,484	210,968,068	20,871,013	30,903,621	0	0	11,931,103
Big Six	0	0	0	0	0	1,427,998	0	0	0	0	0
Black Jack	100,134,259	39,213,793	35,610,108	31,230,247	69,611,629	125,946,502	105,557,924	41,585,774	300	17,288,747	47,664,563
Craps	34,831,234	18,035,956	14,347,141	11,657,176	18,071,065	52,889,545	33,026,569	16,092,423	1,984	8,933,985	19,016,839
Non Traditional	945	0	0	0	0	135,696	0	0	0	0	0
Poker***	18,311,509	13,889,675	15,842,112	11,648,321	13,469,931	63,554,516	36,675,338	3,851,569	0	6,446,565	15,602,938
Poker Room**	0	154,837	1,062,113	0	769,891	9,645,414	3,747,561	0	1,466,843	0	1,931,467
Roulette	21,934,807	5,298,923	7,209,078	4,657,391	9,526,978	42,032,409	16,785,971	6,480,177	0	1,136,923	10,516,080
Other	0	0	0	0	0	0	0	0	0	0	0
TOTAL	\$319,936,303	\$76,828,085	\$79,373,691	\$59,441,210	\$115,994,978	\$506,600,148	\$216,664,376	\$98,913,564	\$1,469,127	\$33,806,220	\$106,662,990
WIN											
Baccarat	19,476,249	(46,121)	805,654	38,634	756,519	38,080,750	3,494,823	5,382,210	0	0	2,363,983
Big Six	0	0	0	0	0	621,112	0	0	0	0	0
Black Jack	13,705,828	6,514,834	6,119,899	5,515,129	13,811,428	29,840,056	23,304,381	8,770,382	180	2,571,601	9,130,676
Craps	7,989,888	3,538,467	2,975,328	2,362,554	4,325,626	11,099,664	7,726,563	3,061,733	847	1,863,278	4,030,614
Non Traditional	900	0	0	0	0	41,731	0	0	0	0	0
Poker***	4,646,976	3,810,376	4,047,489	3,173,708	3,696,970	16,398,760	9,497,643	768,617	0	1,976,348	4,744,509
Poker Room**	0	154,837	1,062,113	0	769,891	9,645,414	3,747,561	0	1,466,843	0	1,931,467
Roulette	4,721,938	1,438,934	1,810,432	1,064,537	2,526,041	11,087,248	4,771,361	1,605,032	0	271,710	2,627,566
Other	283,245	163,121	83,620	500	317,310	1,438,647	3,056	0	155,120	4,150	0
TOTAL	\$50,825,024	\$15,574,448	\$16,904,535	\$12,155,062	\$26,203,785	\$118,253,382	\$52,545,388	\$19,587,974	\$1,622,990	\$6,687,087	\$24,828,815

* As of 6/30/2018

** Traditional Poker

*** Includes Caribbean Stud/Draw, Let It Ride, Pai Gow, 3 Card, Boston 5 Stud, 3-5-7, Wild Hold em Fold Em, Crazy 4, and 2-2-1

Totals may include minor variations due to rounding

2018 SUMMARY OF EGD ACTIVITY—UNITS

UNITS	AMERISTAR	BELTERRA	BLUE CHIP	FRENCH LICK	HOLLYWOOD	HOOSIER PARK	HORSESHOE HAMMOND	HORSESHOE SOUTHERN	INDIANA GRAND	MAJESTIC STAR	MAJESTIC STAR II	RISING STAR	TROPICANA EVANSVILLE
0	n/a	n/a	n/a	n/a	n/a	n/a	n/a	n/a	10	n/a	n/a	n/a	n/a
1 cent	1058	834	976	572	693	1083	1392	950	1298	575	658	724	761
2 cent	1	n/a	35	22	39	58	17	35	59	7	3	n/a	n/a
3 cent	n/a	n/a	n/a	n/a	n/a	n/a	10	n/a	n/a	n/a	n/a	n/a	n/a
nickel	86	54	96	42	33	30	131	45	73	41	51	4	33
10 cent	6	2	1	n/a	42	n/a	n/a	1	n/a	17	n/a	n/a	n/a
25 cent	110	129	269	162	258	312	266	255	272	78	89	81	121
50 cent	24	14	7	14	34	11	45	18	18	9	n/a	16	12
\$1	165	114	248	97	224	277	371	228	302	105	28	64	173
\$2	8	n/a	n/a	n/a	n/a	n/a	10	n/a	2	n/a	n/a	n/a	n/a
\$5	26	29	38	14	41	45	28	42	44	10	4	31	26
\$10	2	3	1	1	8	1	4	n/a	5	n/a	n/a	3	7
\$20	n/a	n/a	n/a	n/a	n/a	n/a	n/a	n/a	n/a	n/a	n/a	n/a	n/a
\$25	4	4	6	n/a	15	8	12	6	4	n/a	n/a	7	2
\$50	n/a	n/a	n/a	n/a	n/a	n/a	n/a	n/a	n/a	n/a	n/a	n/a	n/a
\$100	2	5	2	2	3	2	1	2	2	n/a	n/a	3	2
\$500	n/a	n/a	n/a	n/a	n/a	n/a	1	n/a	n/a	n/a	n/a	n/a	n/a
\$1,000	n/a	n/a	n/a	n/a	n/a	n/a	1	n/a	n/a	n/a	n/a	n/a	n/a
other	n/a	n/a	n/a	n/a	n/a	n/a	n/a	n/a	n/a	n/a	n/a	n/a	n/a
TOTAL	1,492	1,188	1,679	926	1,390	1,827	2,289	1,582	2,089	842	833	933	1,137

2018 SUMMARY OF EGD ACTIVITY— COIN IN

COIN IN	AMERISTAR	BELTERRA	BLUE CHIP	FRENCH LICK	HOLLYWOOD	HOOSIER PARK	HORSESHOE HAMMOND	HORSESHOE SOUTHERN	INDIANA GRAND	MAJESTIC STAR	MAJESTIC STAR II	RISING STAR	TROPICANA EVANSVILLE
0	0	0	0	0	0	0	0	0	0	0	0	0	0
1 cent	1,103,172,159	563,347,169	762,398,059	573,385,323	644,448,451	1,215,117,285	1,517,942,570	925,233,808	1,534,452,230	473,220,113	431,115,564	401,637,082	656,018,039
2 cent	1,212,414	0	13,711,556	17,540,251	18,058,984	42,084,503	20,381,236	26,373,626	34,930,027	3,437,650	1,136,452	0	0
3 cent	0	0	0	0	0	0	20,626,350	0	0	0	0	0	0
nickel	85,388,504	68,568,646	124,948,111	33,022,799	25,873,576	32,354,445	158,988,863	80,266,643	73,136,891	58,432,180	69,471,097	1,230,193	39,367,688
10 cent	12,985,795	3,828,058	4,936,775	0	93,921,598	0	14,601,460	2,981,034	0	6,644,631	0	0	0
25 cent	124,221,613	118,903,705	267,434,987	139,784,174	214,427,264	299,264,375	283,470,037	214,441,321	450,808,459	74,963,475	53,770,062	37,475,336	142,669,261
50 cent	20,897,159	9,479,773	4,877,538	11,241,614	44,228,994	12,087,626	102,929,904	41,778,979	17,083,918	9,849,790	0	8,248,893	8,562,587
\$1	276,884,859	179,138,223	343,861,200	151,830,792	304,640,763	669,679,465	592,260,698	472,607,712	956,229,561	123,056,366	21,227,616	45,611,753	224,095,325
\$2	8,881,028	0	0	0	0	0	11,213,893	0	2,208,366	0	270,012	0	0
\$5	48,607,019	60,770,534	64,632,815	34,595,613	117,757,966	163,719,090	90,797,356	122,405,995	184,817,562	12,204,685	1,494,470	22,659,310	77,141,330
\$10	2,958,410	9,402,910	3,142,020	7,777,330	11,266,960	5,230,686	23,023,480	0	12,774,145	0	0	3,695,990	21,982,830
\$20	0	0	0	0	0	0	0	0	0	0	0	0	0
\$25	5,131,965	4,266,975	8,141,850	499,100	25,327,200	67,107,535	24,255,275	0	17,216,525	0	0	4,001,900	11,494,825
\$50	0	0	0	0	0	0	0	0	0	0	0	0	0
\$100	2,085,500	14,810,000	2,846,700	3,916,700	6,322,000	6,618,700	10,393,000	6,678,000	12,257,200	0	0	4,134,000	6,984,000
\$500	0	0	0	0	0	0	331,000	500	0	0	0	0	0
\$1,000	0	0	0	0	0	0	75,000	0	0	0	0	0	0
other	0	0	0	0	0	0	0	0	0	0	0	0	0
TOTAL	\$ 1,692,426,425	\$ 1,032,515,993	\$ 1,600,931,611	\$ 973,593,696	\$ 1,506,273,756	\$ 2,513,263,710	\$ 2,871,290,122	\$ 1,892,767,618	\$ 3,295,914,884	\$ 761,808,890	\$ 578,485,273	\$ 528,694,457	\$ 1,188,315,885

Totals may include minor variations due to rounding.

2018 SUMMARY OF EGD ACTIVITY—WIN

WIN	AMERISTAR	BELTERRA	BLUE CHIP	FRENCH LICK	HOLLYWOOD	HOOSIER PARK	HORSESHOE HAMMOND	HORSESHOE SOUTHERN	INDIANA GRAND	MAJESTIC STAR	MAJESTIC STAR II	RISING STAR	TROPICANA EVANSVILLE
0	0	0	0	0	0	0	0	0	623,895	0	0	0	0
1 cent	131,962,563	63,122,665	83,060,371	55,857,375	79,735,716	128,753,747	185,999,357	115,193,769	171,017,125	53,831,970	49,367,082	35,639,457	81,871,018
2 cent	56,236	0	1,654,618	1,520,287	2,386,411	4,178,886	2,360,994	2,926,027	4,328,939	378,395	136,460	0	0
3 cent	0	0	0	0	0	0	3,041,315	0	0	0	0	0	0
nickel	5,181,305	3,533,806	7,471,277	1,578,958	2,940,348	2,671,730	11,357,670	5,305,581	5,922,943	2,757,611	3,996,578	66,616	2,824,931
10 cent	1,202,124	380,525	403,570	0	6,301,715	0	1,596,863	308,744	0	774,289	0	0	0
25 cent	7,898,734	7,865,866	16,903,453	8,551,809	17,390,482	18,318,147	23,104,624	16,448,150	26,975,958	4,022,564	3,442,270	2,529,433	11,414,896
50 cent	1,441,088	847,113	406,565	893,505	3,114,940	1,139,182	5,956,397	2,611,230	1,372,002	844,183	0	755,313	1,077,416
\$1	19,365,902	12,611,392	22,189,480	10,200,073	27,336,057	41,385,976	46,274,794	38,650,450	53,652,504	9,156,231	1,177,431	3,132,423	18,469,842
\$2	439,300	0	0	0	0	0	1,275,896	0	51,000	0	-860	0	0
\$5	3,230,266	3,933,949	3,623,052	1,991,087	6,319,547	9,047,331	4,928,785	8,718,741	9,738,595	827,994	58,220	1,298,080	5,775,126
\$10	259,290	402,089	212,730	311,210	780,857	352,795	1,153,623	0	600,585	0	0	223,470	1,727,046
\$20	0	0	0	0	0	0	0	0	0	0	0	0	0
\$25	470,003	385,325	569,218	-75,150	1,698,988	2,365,944	1,750,252	1,282,308	851,705	0	0	381,025	548,145
\$50	0	0	0	0	0	0	0	0	0	0	0	0	0
\$100	167,980	768,302	-120,399	166,800	467,736	492,300	658,130	318,748	605,540	0	0	198,000	535,400
\$500	0	0	0	0	0	0	12,500	500	0	0	0	0	0
\$1,000	0	0	0	0	0	0	27,000	0	0	0	0	0	0
other	0	2,160	0	795	0	0	0	0	215,255	0	0	0	0
TOTAL	\$ 171,674,791	\$ 93,853,192	\$ 136,373,935	\$ 80,996,749	\$ 148,472,797	\$ 208,706,038	\$ 289,498,200	\$ 191,764,248	\$ 275,956,046	\$ 72,593,237	\$ 58,177,181	\$ 44,223,817	\$ 124,243,820

Totals may include minor variations due to rounding.

2018 GRADUATED TAX STATUS

North Boats	Rate	Date of Change
Ameristar	15%	07/01/2017
	20%	08/16/2017
	25%	10/04/2017
	30%	11/22/2017
	35%	03/30/2018
Blue Chip	15%	07/01/2017
	20%	09/01/2017
	25%	11/03/2017
	30%	01/12/2018
	35%	
Horseshoe Hammond	15%	07/01/2017
	20%	07/24/2017
	25%	08/17/2017
	30%	09/09/2017
	35%	11/18/2017
Majestic Star	15%	07/01/2017
	20%	11/04/2017
	25%	02/26/2018
	30%	05/25/2018
	35%	
Majestic Star II *	5%	07/01/2017
	20%	01/14/2018
	25%	06/07/2018
	30%	
	35%	

Racinos	Rate	Date of Change
Hoosier Park	25%	07/01/2017
	30%	01/26/2018
	35%	
Indiana Grand	25%	07/01/2017
	30%	12/12/2017
	35%	05/17/2018

Casinos	
AGR	Rate
less than \$25 million	15%
\$25 - \$50 million	20%
\$50 - \$75 million	25%
\$75 - \$150 million	30%
over \$150 million	35%

Racinos	
AGR	Rate
less than \$100 million	25%
\$100-\$200 million	30%
over \$200 million	35%

South Boats	Rate	Date of Change
Belterra	15%	07/01/2017
	20%	09/16/2017
	25%	12/18/2017
	30%	03/17/2018
	35%	
Tropicana Evansville	15%	07/01/2017
	20%	09/13/2017
	25%	11/22/2017
	30%	01/29/2018
	35%	
French Lick	15%	07/01/2017
	20%	10/15/2017
	25%	02/11/2018
	30%	05/22/2018
	35%	
Hollywood	15%	07/01/2017
	20%	08/25/2017
	25%	10/21/2017
	30%	12/20/2017
	35%	05/25/2018
Horseshoe Southern	15%	07/01/2017
	20%	08/06/2017
	25%	09/15/2017
	30%	10/22/2017
	35%	02/16/2018
Rising Star *	5%	07/01/2017
	20%	01/24/2018
	25%	
	30%	
	35%	

* Did not reach \$75 Million total for FY 2018.



The Indiana Gaming Commission would like to thank
Robert Paugh for his help in creating this report.

WWW.IN.GOV/IGC

**101 West Washington Street, Suite 1600
Indianapolis, Indiana 46204
317.233.0046**

