

PROJECT	DESIGNATION
0810244	0900246
CONTRACT	BRIDGE FILE
TBD	TBD

KIN DESIGNATION NUMBERS	
BRIDGE PLANS	
0900239	BRIDGE 1B-1 - RAMP IR-1 OVER RAILROAD
0900242	BRIDGE 1B-2 - W.B. S.R. 265 OVER RAILROAD
0900241	BRIDGE 1B-3 - E.B. S.R. 265 OVER RAILROAD
0900240	BRIDGE 1B-4 - RAMP IR-3 OVER RAILROAD
0900243	BRIDGE 1B-5 - W.B. S.R. 265 OVER S.R. 62
0900244	BRIDGE 1B-6 - E.B. S.R. 265 OVER S.R. 62
0900245	BRIDGE 1B-8 - E.B. S.R. 265 OVER PORT ROAD
0900247	BRIDGE 1B-9 - RAMP IR-9 OVER PORT ROAD
1005117	BRIDGE 1B-10 - RAMP IR-8 OVER RAMP IR-9
0810244	ROAD PLANS SR-265

INDIANA DEPARTMENT OF TRANSPORTATION



NOTE: FOR TRAFFIC AND DESIGN DATA
SEE INDEX SHEET DWG. NO. 1X-01.

STRUCTURE	TYPE	SPAN AND SKEW	OVER	STATION
TBD	PRESTRESSED CONCRETE BULB TEE BEAM	1 SPAN: 97'-6" SKEW: NONE	PORT ROAD	P.O.T. 376+4.64 "LA-WB"

BRIDGE PLANS

ROUTE: S.R. 265 WB OVER PORT ROAD: R.P. 9+84

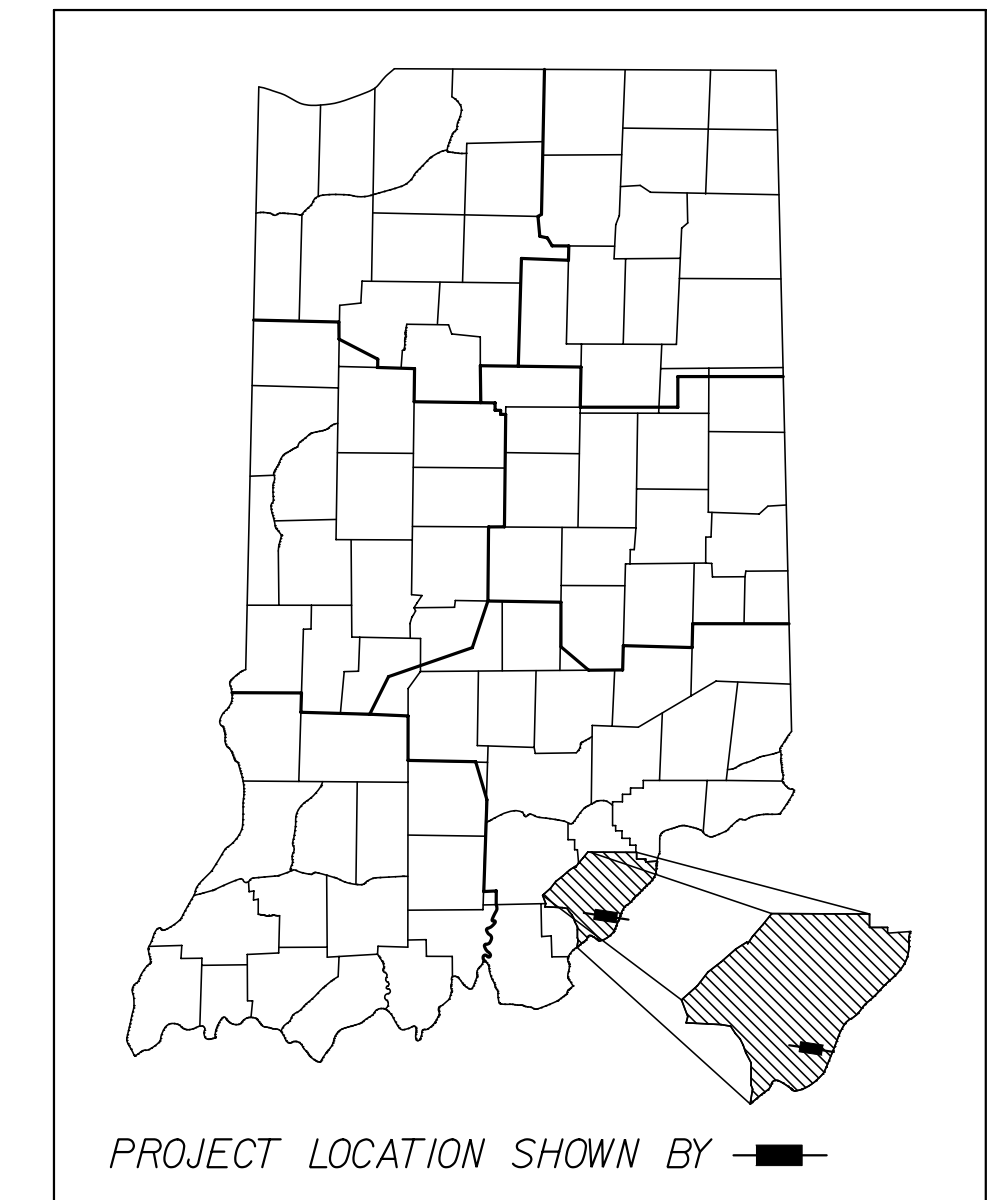
PROJECT NO. 0810244 P.E.

PROJECT NO. 0810244 R/W

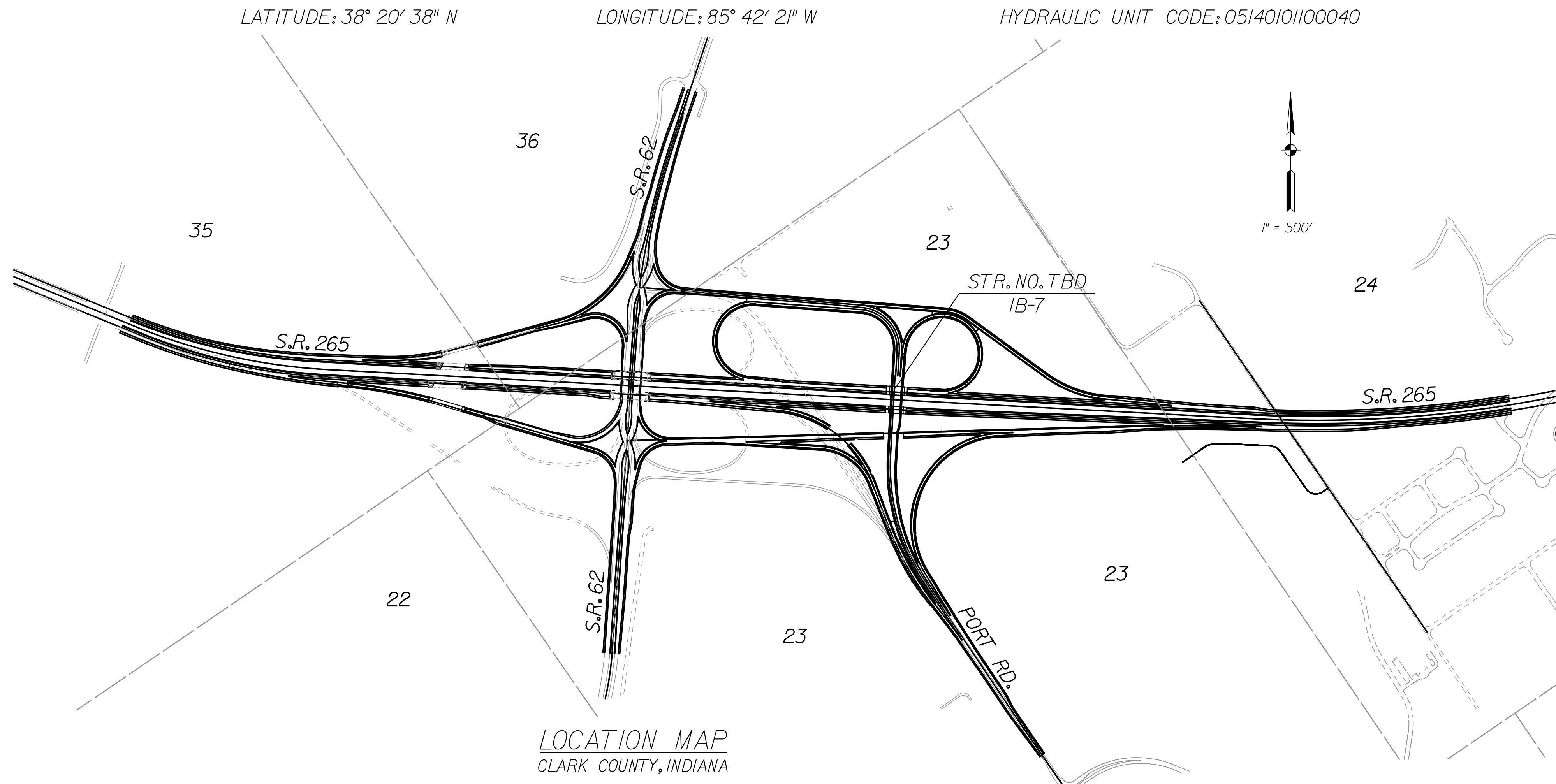
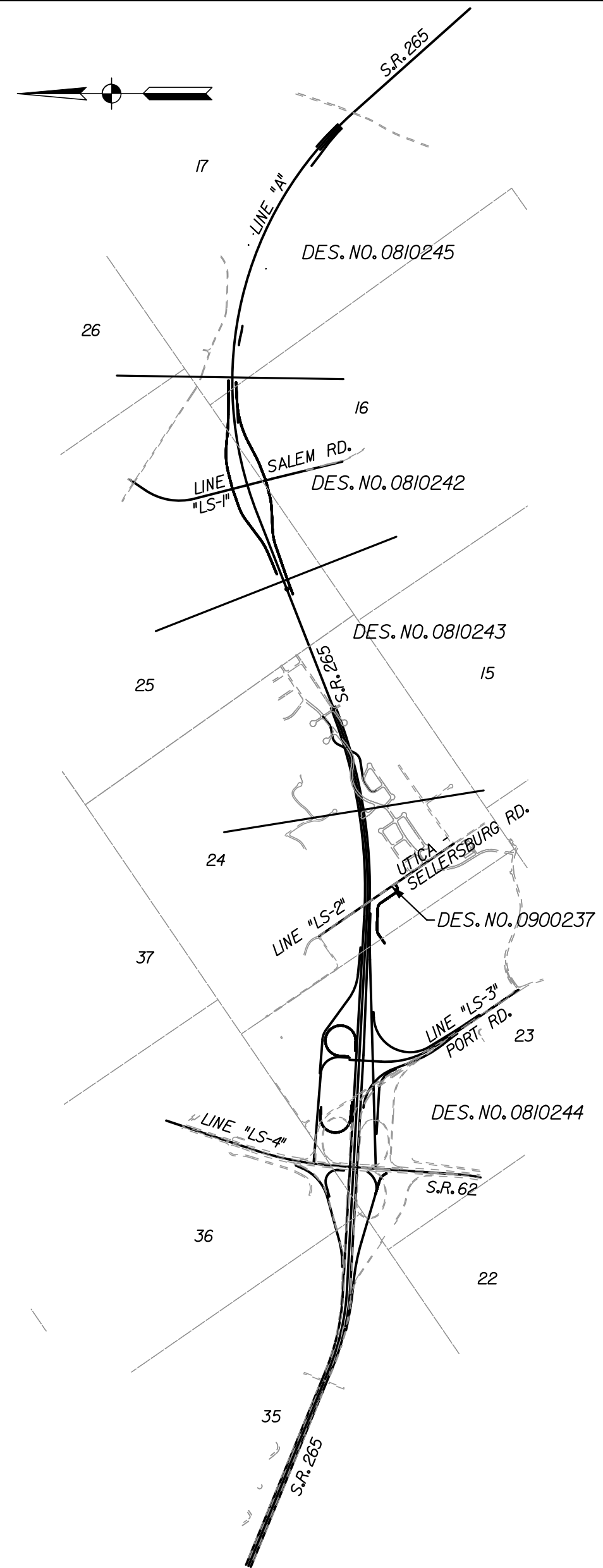
PROJECT NO. 0810244 CONST.

NEW BRIDGE CONSTRUCTION ON S.R. 265 WB OVER PORT ROAD
LOCATED 0.35 MILES EAST OF SR 62 IN ILLINOIS GRANT
SURVEY 23, UTICA TOWNSHIP, CLARK COUNTY, INDIANA

LATITUDE: 38° 20' 38" N LONGITUDE: 85° 42' 21" W HYDRAULIC UNIT CODE: 05140101100040



BRIDGE LENGTH: 0.016 MI
ROADWAY LENGTH: 0.008 MI.
TOTAL LENGTH: 0.024 MI.
MAXIMUM GRADE: 1.26%



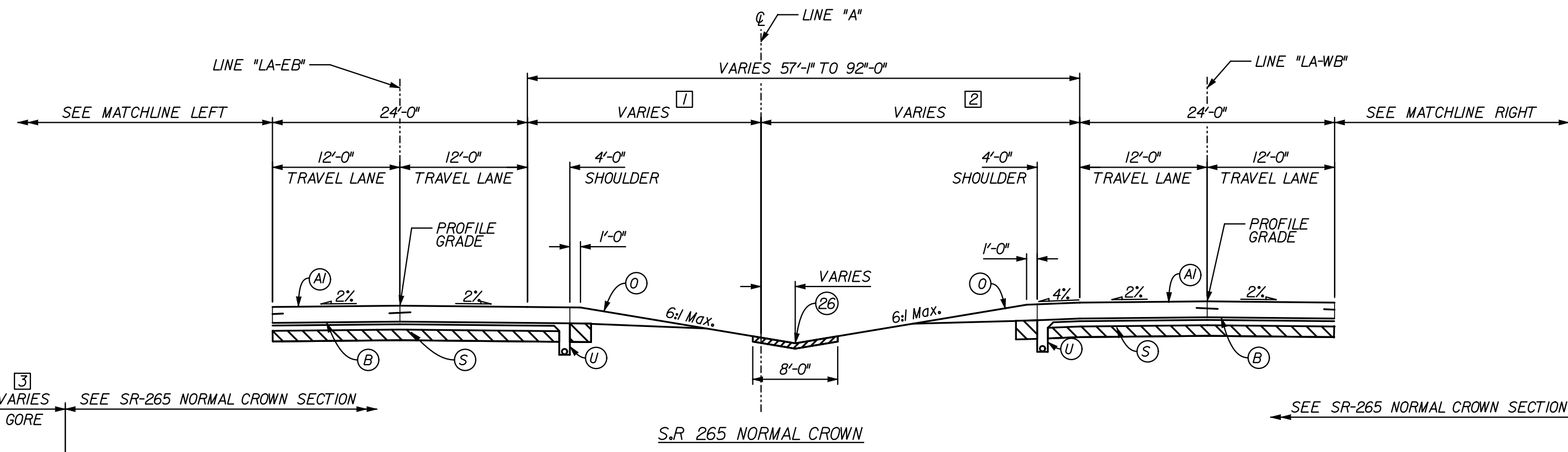
FINAL SUBMITTAL
DECEMBER 30, 2011

(INDIANA DEPARTMENT OF TRANSPORTATION
STANDARD SPECIFICATIONS DATED 2012
TO BE USED WITH THESE PLANS)

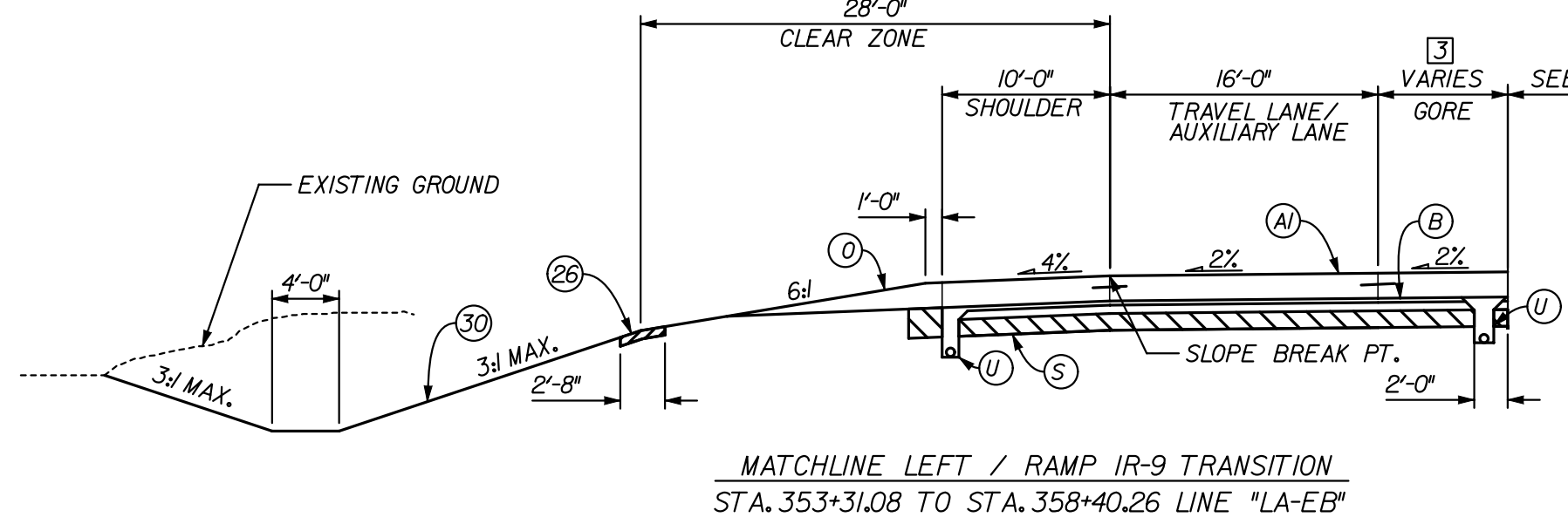
BURGESS & NIPLE

FEDERAL HIGHWAY ADMINISTRATION U.S. DEPT. OF TRANSPORTATION APPROVED: _____ DATE _____ _____ DIVISION ADMINISTRATOR	PLANS PREPARED BY: _____ COMPANY NAME _____ PLANS PREPARED BY: _____ COMPANY NAME _____ DATE _____ APPROVED FOR LETTING: _____ CHIEF, DIVISION OF DESIGN _____ DATE _____				<table border="1" style="width: 100%;"> <tr> <td colspan="2">BRIDGE FILE</td> </tr> <tr> <td colspan="2">TBD</td> </tr> <tr> <td colspan="2">DESIGNATION</td> </tr> <tr> <td colspan="2">0900246</td> </tr> <tr> <td>DWG. NO.</td> <td>SHEET NO.</td> </tr> <tr> <td>TI-01</td> <td>1 of 17</td> </tr> <tr> <td colspan="2">PROJECT</td> </tr> <tr> <td colspan="2">0810244</td> </tr> </table>	BRIDGE FILE		TBD		DESIGNATION		0900246		DWG. NO.	SHEET NO.	TI-01	1 of 17	PROJECT		0810244	
BRIDGE FILE																					
TBD																					
DESIGNATION																					
0900246																					
DWG. NO.	SHEET NO.																				
TI-01	1 of 17																				
PROJECT																					
0810244																					
		CONTRACT																			
		TBD																			

12/30/2011 8:16 AM
 C:\pro\technise\dms08859\EB71001.dgn



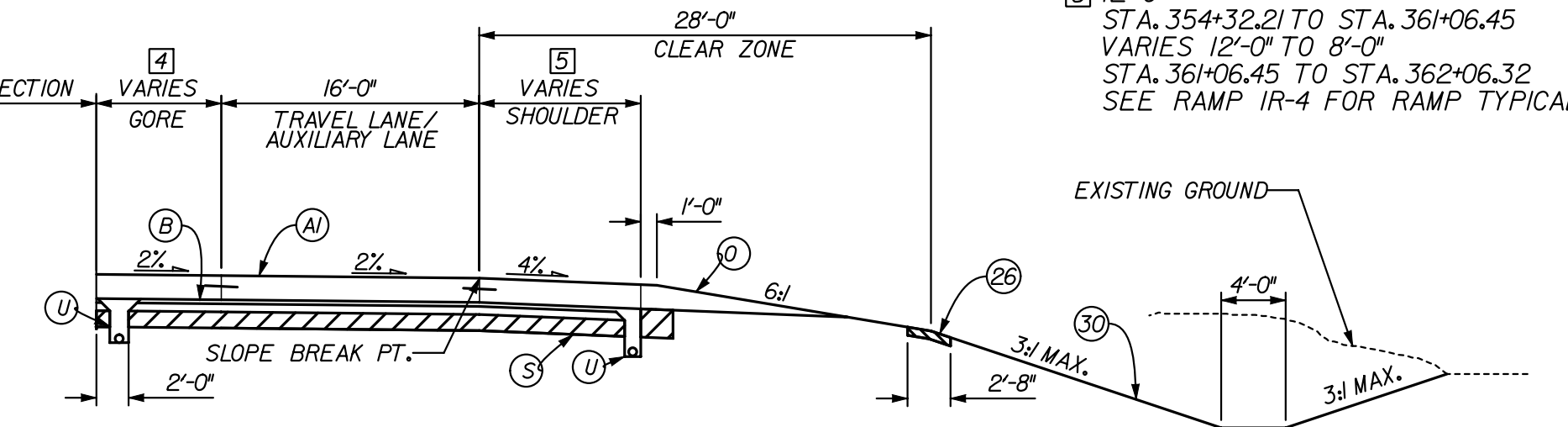
- 4 VARIES 0'-6" TO 4'-0"
STA. 354+32.21 TO STA. 357+56.20 LA-WB
4'-0" TO 22'-0"
STA. 357+56.20 TO STA. 362+06.32 LA-WB
- 5 12'-0"
STA. 354+32.21 TO STA. 361+06.45
VARIES 12'-0" TO 8'-0"
STA. 361+06.45 TO STA. 362+06.32
SEE RAMP IR-4 FOR RAMP TYPICAL SECTION



MATCHLINE LEFT / RAMP IR-9 TRANSITION
STA. 353+31.08 TO STA. 358+40.26 LINE "LA-EB"

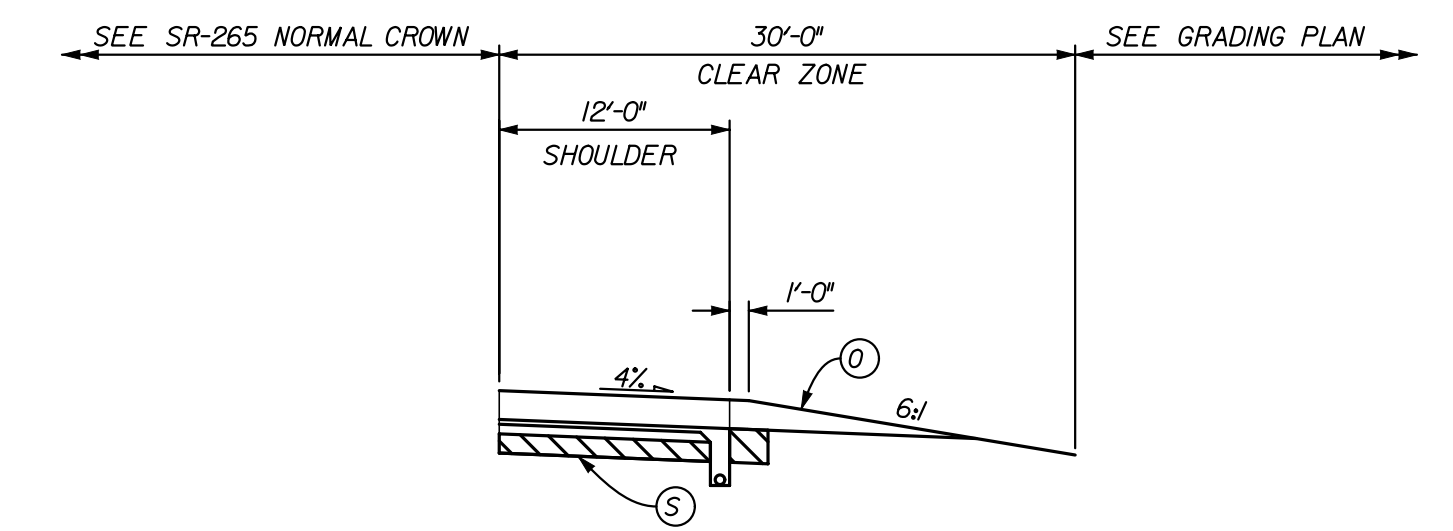
- 1 VARIES 26'-6" TO 53'-7"
STA. 353+31.08 TO STA. 375+18.10 "LA-EB"
VARIES 53'-7" TO 47'-0"
STA. 375+18.10 TO STA. 392+86.10 "LA-EB"

- 2 VARIES 30'-6" TO 45'-0"
STA. 354+32.21 TO STA. 392+47.02 LA-WB

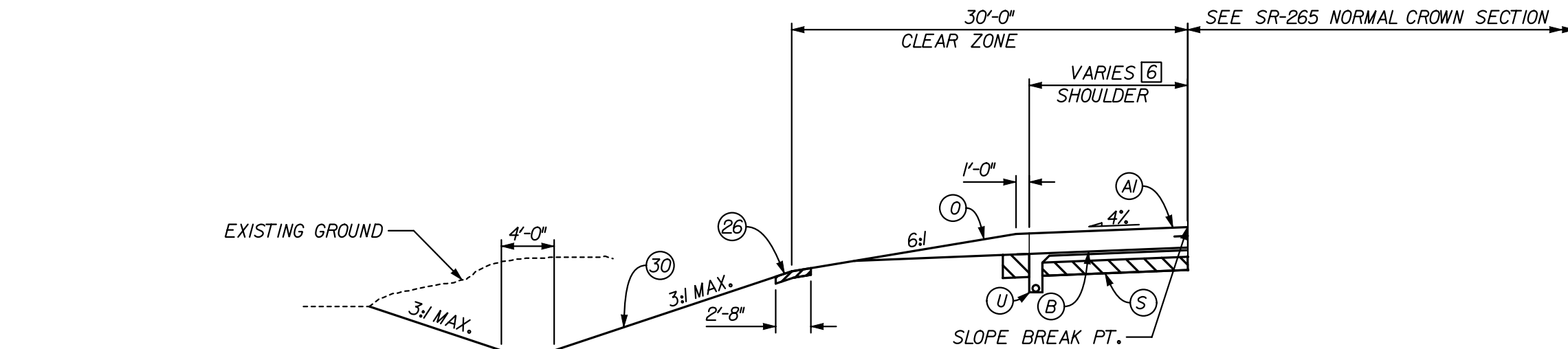


MATCHLINE RIGHT / RAMP IR-4 TRANSITION
STA. 354+32.21 LINE "LA-WB" TO STA. 362+06.32 LINE "LA-WB"

- 3 VARIES 3'-0" TO 22'-0"
STA. 353+31.08 TO STA. 358+40.26



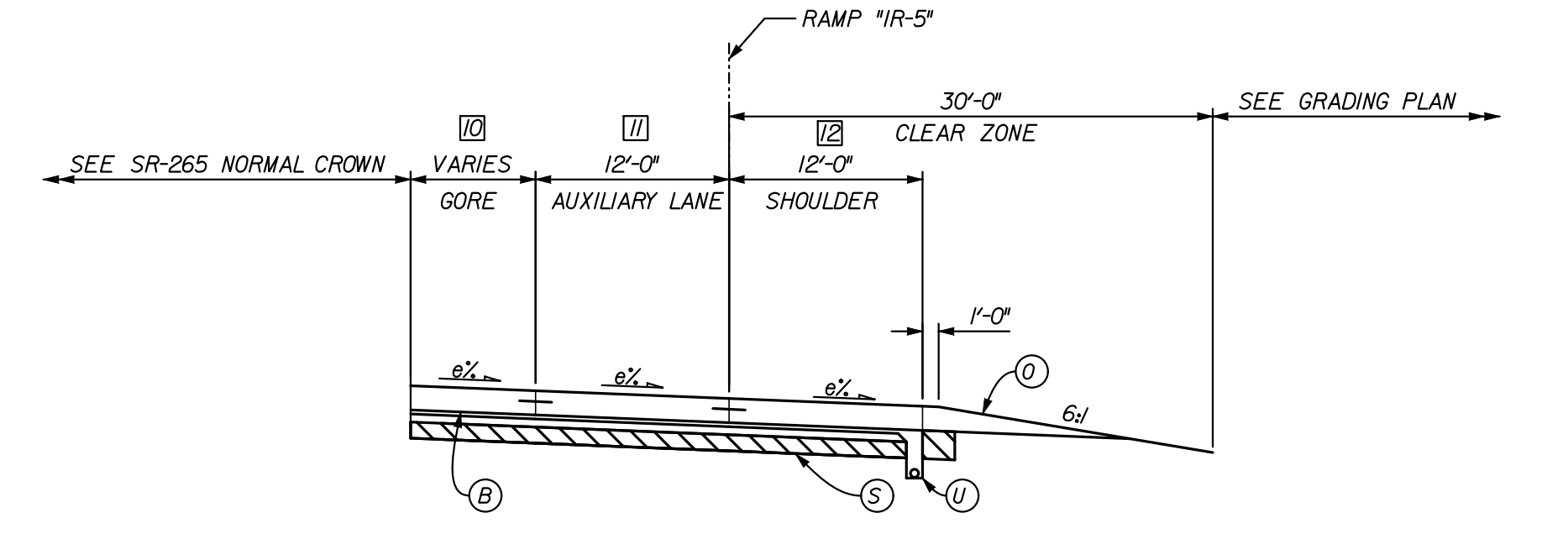
MATCHLINE RIGHT - SHOULDER
STA. 362+06.32 LINE "LA-WB" TO STA. 371+92.89 LINE "LA-WB"



MATCHLINE LEFT / SHOULDER
STA. 358+40.26 TO STA. 375+62.64 LINE "LA-EB"
STA. 377+03.14 TO STA. 384+25.00 LINE "LA-EB"

- 6 12'-0"
STA. 358+40.26 TO STA. 375+62.64 "LA-EB"
13'-0"
STA. 377+03.14 TO STA. 379+77.04 "LA-EB"
12'-0"
STA. 379+77.04 TO STA. 384+25.00 "LA-EB"

- PAVING EXCEPTIONS
- (BRIDGE 1B-8, DES 0900246)
STA. 375+62.64 TO STA. 377+03.14 LINE "LA-EB"
 - (BRIDGE 1B-6, DES 0900244)
STA. 392+86.10 TO STA. 395+45.79 LINE "LA-EB"
 - (BRIDGE 1B-7, DES 0900245)
STA. 375+26.25 TO STA. 376+66.75 LINE "LA-WB"
 - (BRIDGE 1B-5, DES 0900243)
STA. 392+47.02 TO STA. 395+07.68 LINE "LA-WB"



MATCHLINE RIGHT / RAMP IR-5 AND IR-7 TRANSITION
STA. 371+92.89 TO STA. 375+26.25 "LA-WB"
STA. 376+66.75 TO STA. 392+47.02 "LA-WB"

- 7 VARIES 22'-1" TO 0'-0"
STA. 384+25.00 TO STA. 389+92.20 "LA-EB"
0'-0"
STA. 389+92.20 TO STA. 392+86.10 "LA-EB"

MATCHLINE LEFT / RAMP IR-8 TRANSITION
STA. 384+25.00 TO STA. 392+86.10 LINE "LA-EB"

- 8 16'-0"
STA. 384+25.00 TO STA. 389+92.20 "LA-EB"
VARIES 16'-0" TO 12'-0"
STA. 389+92.20 TO STA. 392+75.20 "LA-EB"
12'-0"
STA. 392+75.20 TO STA. 392+86.10 "LA-EB"
- 9 VARIES 10'-0" TO 12'-0"
STA. 384+25.00 TO STA. 385+25.72 "LA-EB"
12'-0"
STA. 385+25.72 TO STA. 387+50.61 "LA-EB"
13'-0"
STA. 387+50.61 TO STA. 392+86.10 "LA-EB"

- 10 VARIES - SEE IR-5 GORE AREA
STA. 371+92.89 TO STA. 372+62.53 "LA-WB"
VARIES - SEE IR-7 GORE AREA
STA. 385+92.80 TO STA. 386+80.08 "LA-WB"
- 11 VARIES - SEE IR-5 GORE AREA
STA. 371+92.89 TO STA. 373+08.49 "LA-WB"
VARIES - SEE IR-7 GORE AREA
STA. 383+08.49 TO STA. 386+26.32 "LA-WB"
- 12 VARIES - SEE IR-5 GORE AREA
STA. 372+64.67 TO STA. 373+08.49 "LA-WB"
VARIES - SEE IR-7 GORE AREA
STA. 383+08.49 TO STA. 386+80.08 "LA-WB"

FOR INFORMATION ONLY

NOTE:
FOR GUARDRAIL TYPICALS, SEE MISCELLANEOUS DETAILS

LEGEND

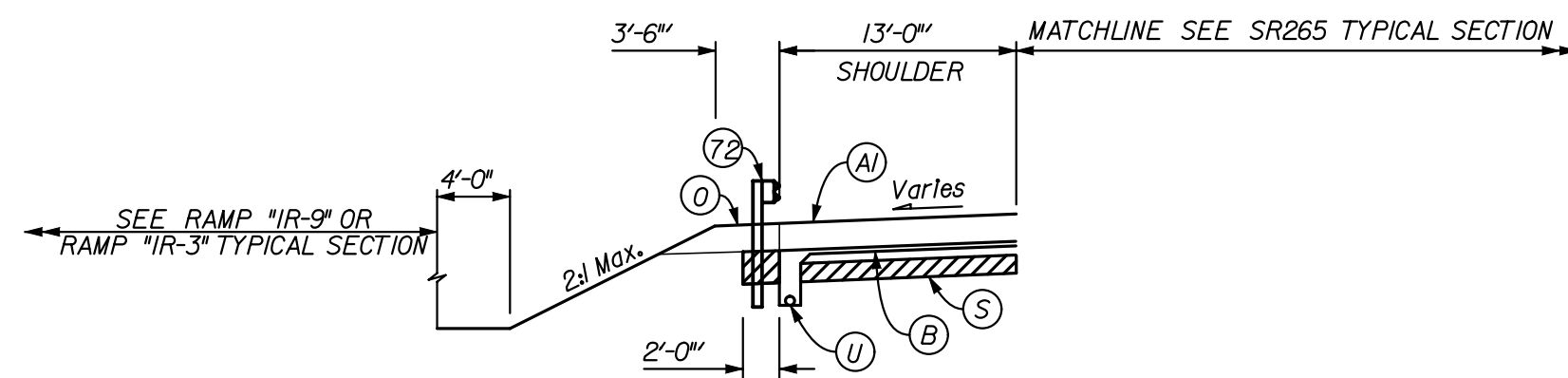
(A) XX" QC/QA PAVEMENT (TO BE DETERMINED)	(1) VARIABLE DEPTH COMPACTED AGGREGATE, NO. 53	(26) SODDING, NURSERY	(66) CONCRETE BARRIER, 45", MODIFIED
(B) SUBBASE FOR PCCP	(2) SUBGRADE TREATMENT, TYPE xx	(30) SEEDING MIXTURE, U	(67) CONCRETE BARRIER, 54"
(C) 220 LB/SYS HMA, BASE, TYPE A ON 4" COMPACTED AGGREGATE, NO. 53, BASE	(3) UNDERDRAIN, 6"	(61) CONCRETE BARRIER, 33"	(70) M.S.E. RETAINING WALL
(D) COARSE AGGREGATE, NO. 8	(4) CURB AND GUTTER, CONCRETE	(62) CONCRETE BARRIER, 33", MODIFIED	(71) REINFORCED CONCRETE MOMENT SLAB, XX"
(E) FULL DEPTH HMA PAVEMENT (TO BE DETERMINED)	(7) CURB AND GUTTER, B, CONCRETE	(65) CONCRETE BARRIER, 45"	(72) W-BEAM GUARDRAIL

RECOMMENDED FOR APPROVAL	DESIGN ENGINEER	DATE
DESIGNED: JLC	DRAWN: AMH	
CHECKED: BNH	CHECKED: JLC	

INDIANA
DEPARTMENT OF TRANSPORTATION
TYPICAL CROSS SECTIONS
LINE 'A'

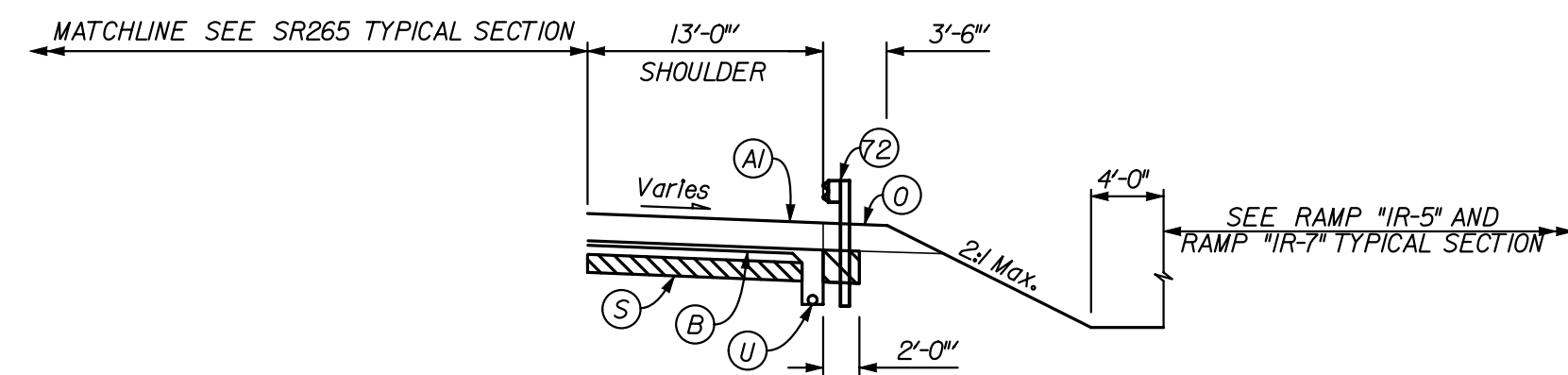
HORIZONTAL SCALE 1" = 10'	BRIDGE FILE TBD
VERTICAL SCALE 1" = 10'	DESIGNATION 0900246
SURVEY BOOK	DWG. NO. T5-01
	SHEET NO. 3 of 17
CONTRACT	PROJECT 0810244

10/21/2011 10:06:38 AM



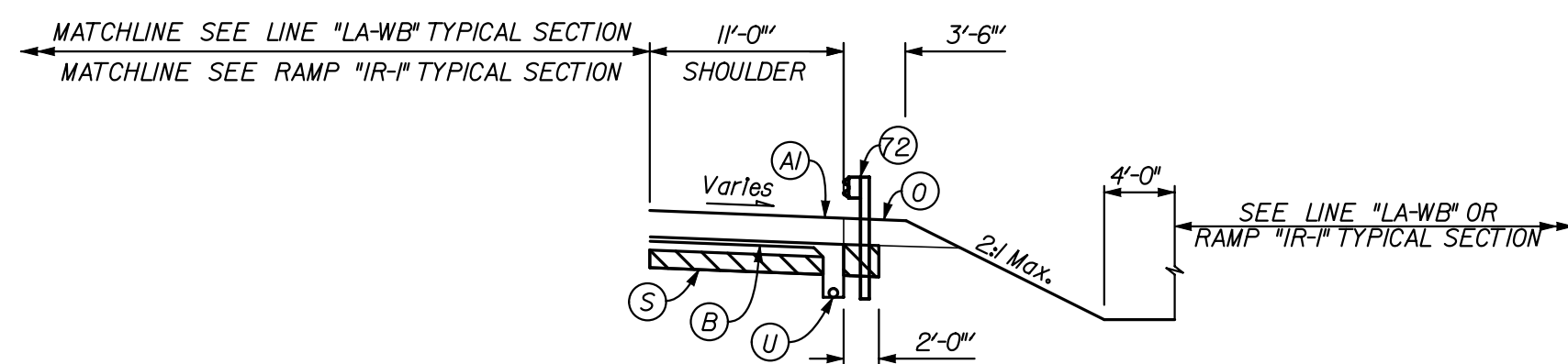
GUARDRAIL SECTION

STA. 377+02.43 TO STA. 379+72.04 "LA-EB"
 STA. 387+50.61 TO STA. 392+87.51 "LA-EB"
 STA. 395+45.78 TO STA. 398+32.42 "LA-EB"
 STA. 407+62.82 TO STA. 410+49.31 "LA-EB"



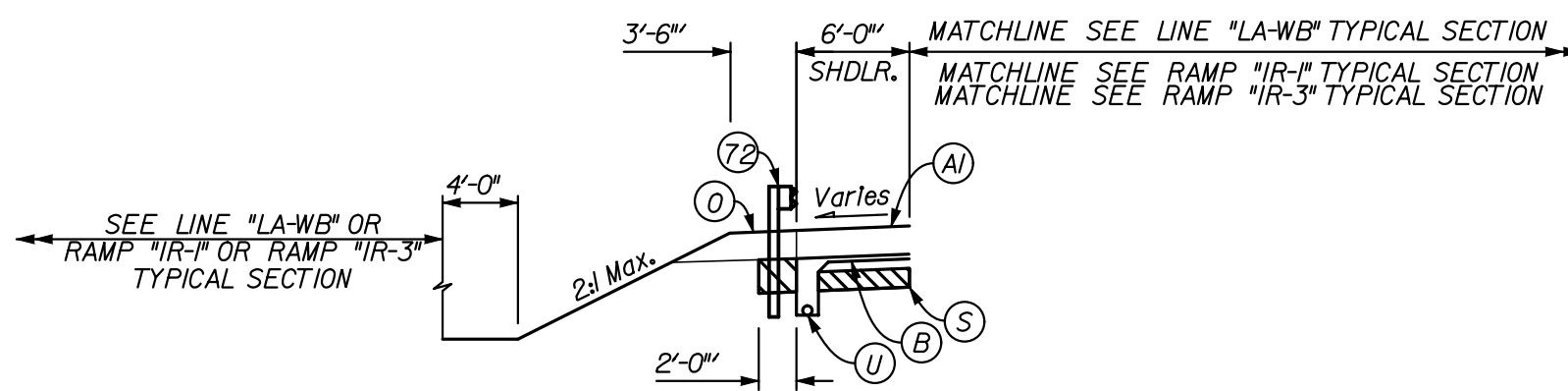
GUARDRAIL SECTION

STA. 372+64.67 TO STA. 375+26.07 "LA-WB"
 STA. 401+51.94 TO STA. 404+63.49 "LA-WB"



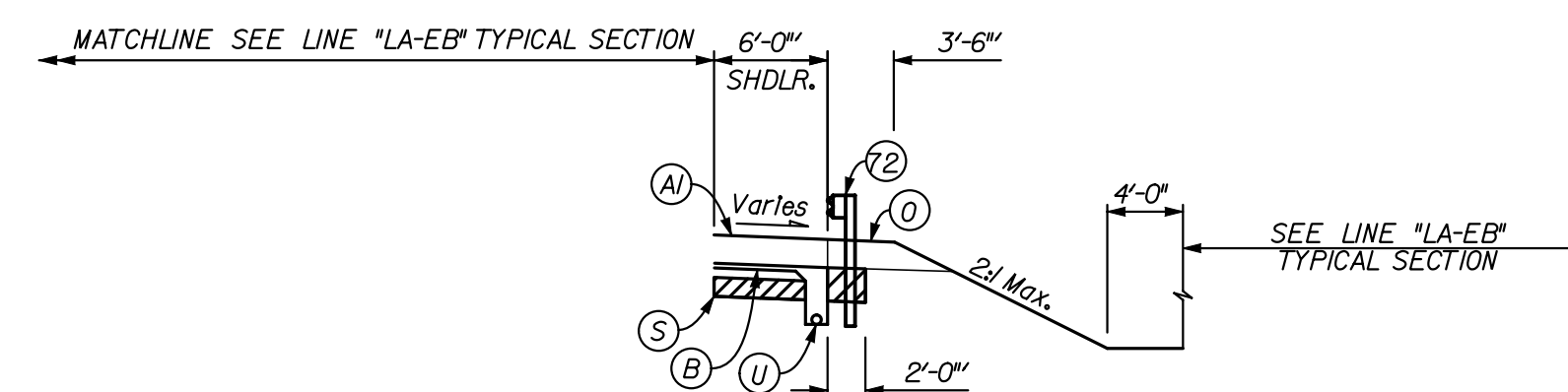
GUARDRAIL SECTION

STA. 401+51.94 TO STA. 404+63.49 "LA-WB"
 STA. 409+08.30 TO STA. 416+30.74 "LA-WB"
 STA. 424+23.00 TO STA. 427+55.00 "LA-WB"
 STA. 115+31.56 TO STA. 118+25.00 RAMP "IR-1"



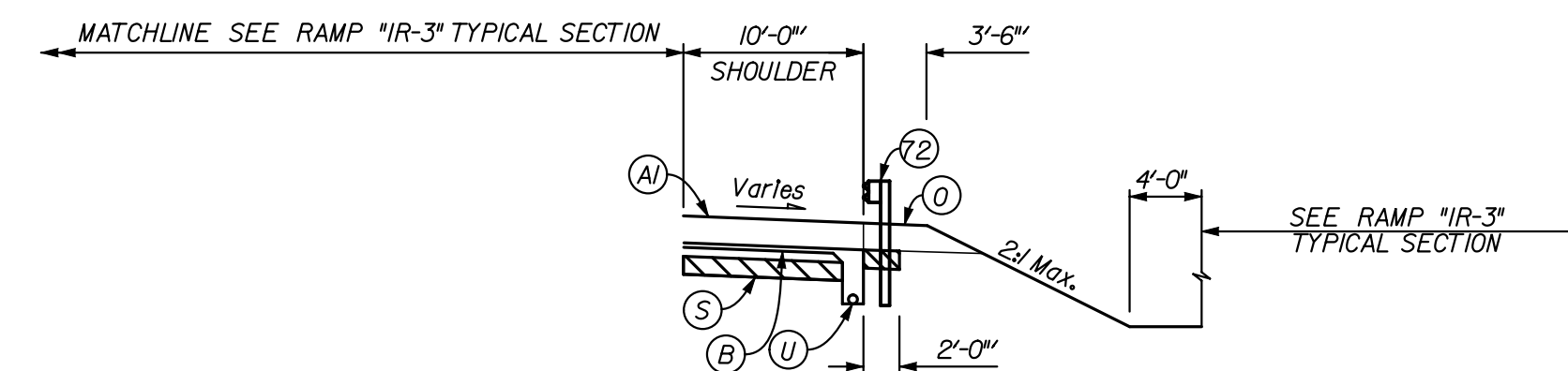
GUARDRAIL SECTION

STA. 371+02.35 TO STA. 375+26.25 "LA-WB"
 STA. 388+49.01 TO STA. 392+47.02 "LA-WB"
 STA. 400+54.75 TO STA. 404+63.24 "LA-WB"
 STA. 423+90.09 TO STA. 427+55.00 LINE "LA-WB"
 STA. 111+55.02 TO STA. 113+52.74 RAMP "IR-1"
 STA. 311+19.31 TO STA. 313+55.67 RAMP "IR-3"



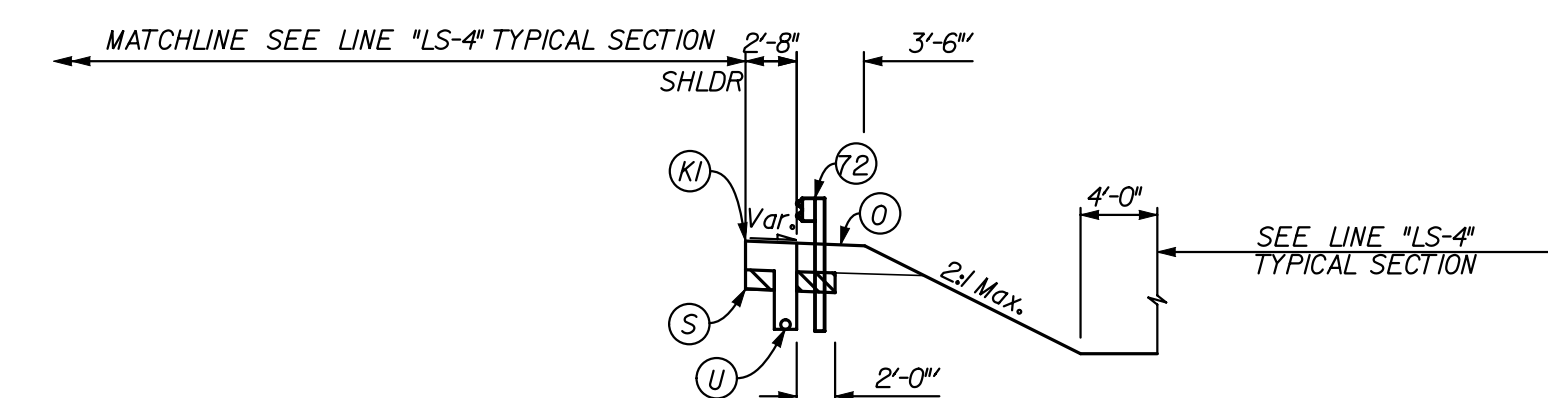
GUARDRAIL SECTION

STA. 377+02.43 TO STA. 381+02.04 "LA-EB"
 STA. 395+45.78 TO STA. 399+43.77 "LA-EB"
 STA. 407+46.54 TO STA. 411+45.44 "LA-EB"



GUARDRAIL SECTION

STA. 310+80.74 TO STA. 313+54.67 RAMP "IR-3"
 STA. 316+50.00 TO STA. 317+00.00 RAMP "IR-3"



GUARDRAIL SECTION

STA. 29+95.40 TO STA. 30+70.40 LINE "LS-4"

FOR INFORMATION ONLY

LEGEND

- | | | | |
|--|--|--------------------------------------|---|
| (A) XX" QC/QA PAVEMENT (TO BE DETERMINED) | (O) VARIABLE DEPTH COMPACTED AGGREGATE, NO. 53 | (26) SODDING, NURSERY | (66) CONCRETE BARRIER, 45", MODIFIED |
| (B) SUBBASE FOR PCCP | (S) SUBGRADE TREATMENT, TYPE xx | (30) SEEDING MIXTURE, U | (67) CONCRETE BARRIER, 54" |
| (D) 220 LB/SYS HMA, BASE, TYPE A ON 4" COMPACTED AGGREGATE, NO. 53, BASE | (U) UNDERDRAIN, 6" | (61) CONCRETE BARRIER, 33" | (70) M.S.E. RETAINING WALL |
| (R) COARSE AGGREGATE, NO. 8 | (15) CURB AND GUTTER, CONCRETE | (62) CONCRETE BARRIER, 33", MODIFIED | (71) REINFORCED CONCRETE MOMENT SLAB, XX" |
| (N) FULL DEPTH HMA PAVEMENT (TO BE DETERMINED) | (7) CURB AND GUTTER, B, CONCRETE | (65) CONCRETE BARRIER, 45" | (72) W-BEAM GUARDRAIL |

RECOMMENDED FOR APPROVAL _____
 DESIGN ENGINEER DATE

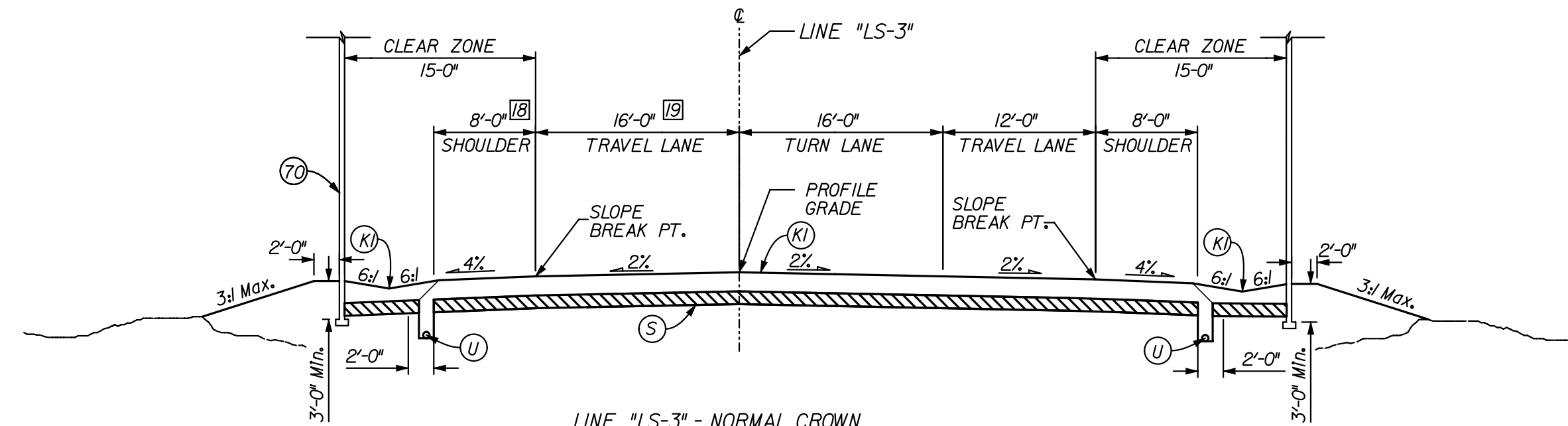
DESIGNED: JLC DRAWN: AMH

CHECKED: BNH CHECKED: JLC

INDIANA DEPARTMENT OF TRANSPORTATION

MISCELLANEOUS DETAILS

HORIZONTAL SCALE 1" = 10'	BRIDGE FILE TBD
VERTICAL SCALE 1" = 10'	DESIGNATION 0900246
SURVEY BOOK	DWG. NO. SHEET NO. TS-02 4 of 17
CONTRACT	PROJECT 0810244



LINE "LS-3" - NORMAL CROWN
STA. 40+69.50 TO STA. 42+39.79 LINE "LS-3"

- Ⓚ CONSTANT 8'-0" FROM STA. 40+69.50 TO STA. 41+34.97
VARIES FROM 8'-0" @ STA. 41+34.97 TO 10'-0" @ STA. 41+68.60
CONSTANT 10'-0" FROM STA. 41+68.60 TO STA. 42+39.79
- Ⓛ CONSTANT 12'-0" FROM STA. 40+69.50 TO STA. 41+68.60
VARIES FROM 12'-0" @ STA. 41+68.60 TO 16'-3" @ STA. 42+39.79

FOR INFORMATION ONLY

10/21/2011 10:12:04 AM
c:\temp\jms\8659\EBT\rs03.dgn

LEGEND

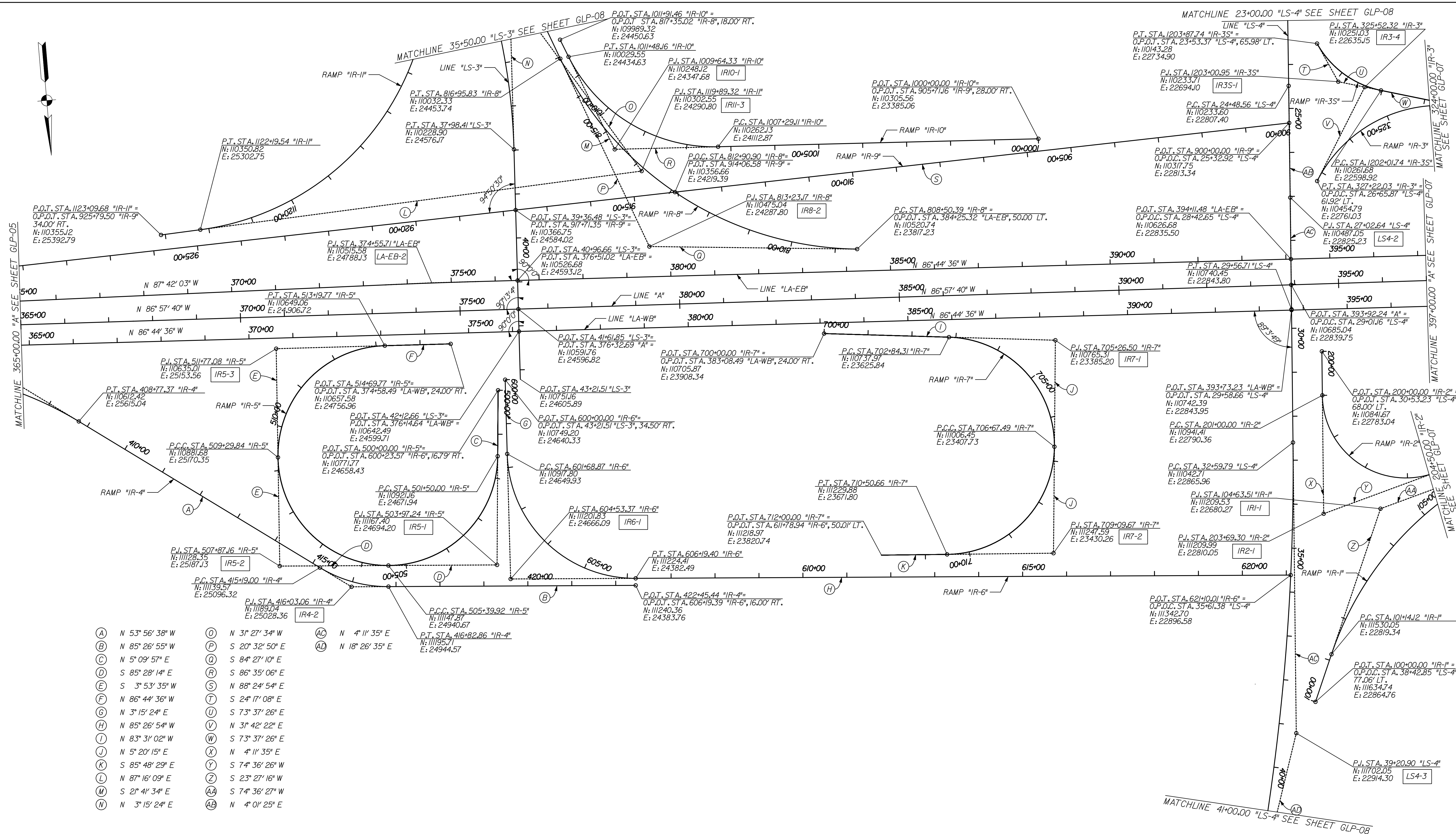
Ⓐ XX" QC/QA PAVEMENT (TO BE DETERMINED)	Ⓚ VARIABLE DEPTH COMPACTED AGGREGATE, NO. 53	Ⓛ SODDING, NURSERY	Ⓜ CONCRETE BARRIER, 45", MODIFIED
Ⓑ SUBBASE FOR PCCP	Ⓛ SUBGRADE TREATMENT, TYPE xx	Ⓛ SEEDING MIXTURE, U	Ⓜ CONCRETE BARRIER, 54"
Ⓒ 220 LB./SYS. HMA, BASE, TYPE A ON 4" COMPACTED AGGREGATE, NO. 53, BASE	Ⓛ UNDERDRAIN, 6"	Ⓛ CONCRETE BARRIER, 33"	Ⓜ M.S.E. RETAINING WALL
Ⓓ COARSE AGGREGATE, NO. 8	Ⓛ CURB AND GUTTER, CONCRETE	Ⓛ CONCRETE BARRIER, 33", MODIFIED	Ⓜ REINFORCED CONCRETE MOMENT SLAB, XX"
Ⓚ FULL DEPTH HMA PAVEMENT (TO BE DETERMINED)	Ⓛ CURB AND GUTTER, B, CONCRETE	Ⓛ CONCRETE BARRIER, 45"	Ⓜ W-BEAM GUARDRAIL

RECOMMENDED FOR APPROVAL _____	
DESIGN ENGINEER	DATE
DESIGNED: JLC	DRAWN: JLC
CHECKED: JMM	CHECKED: JMM

INDIANA
DEPARTMENT OF TRANSPORTATION

TYPICAL CROSS SECTIONS
LINE "LS-3"

HORIZONTAL SCALE 1" = 10'	BRIDGE FILE TBD
VERTICAL SCALE N/A	DESIGNATION 0900246
SURVEY BOOK	DWG. NO. SHEET NO. TS-03 5 of 17
CONTRACT	PROJECT 0810244



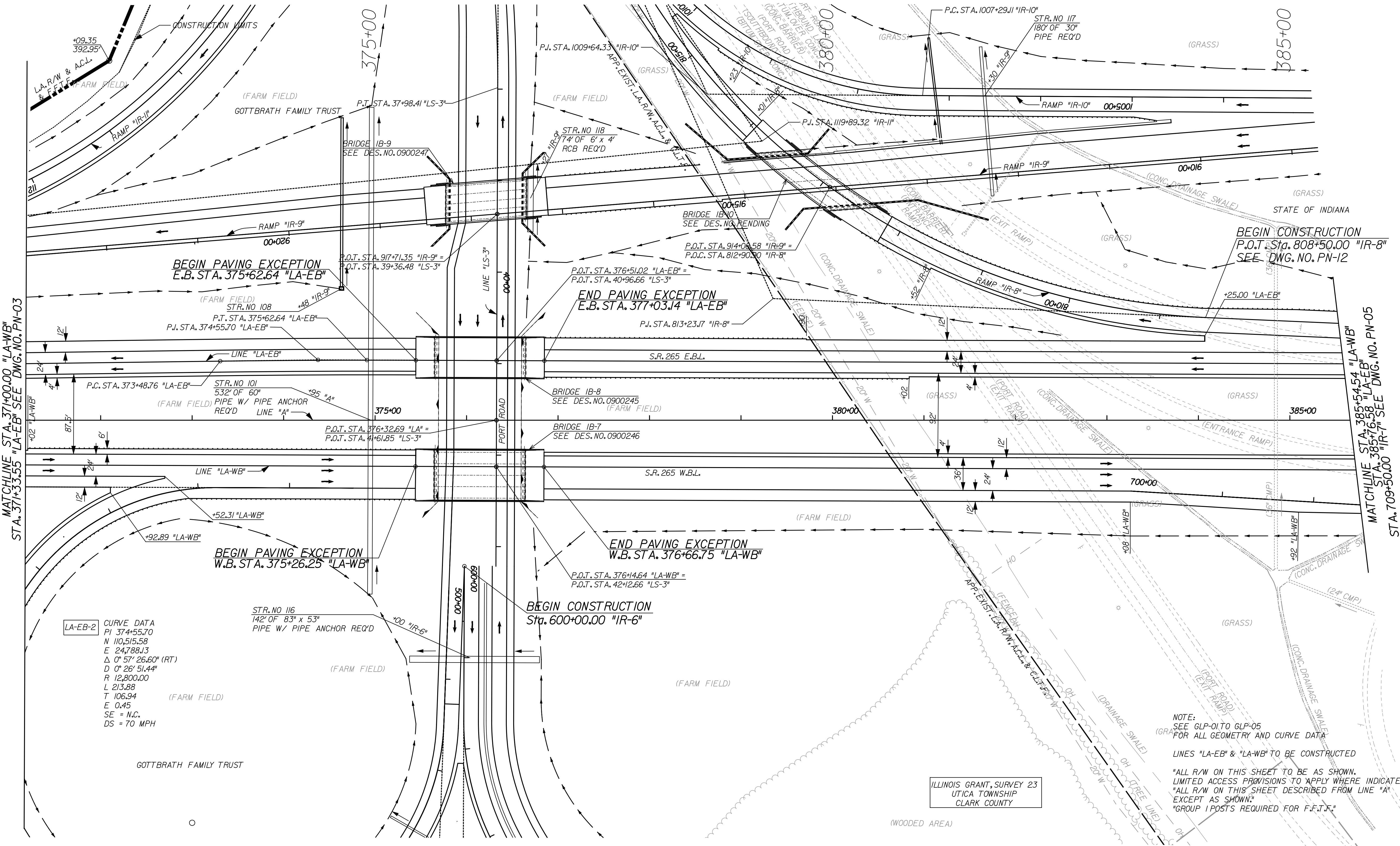
(A) N 53° 56' 38" W	(O) N 3° 27' 34" W	(AC) N 4° 11' 35" E
(B) N 85° 26' 55" W	(P) S 20° 32' 50" E	(AD) N 18° 26' 35" E
(C) N 5° 09' 57" E	(Q) S 84° 27' 10" E	
(D) S 85° 28' 14" E	(R) S 86° 35' 06" E	
(E) S 3° 53' 35" W	(S) N 88° 24' 54" E	
(F) N 86° 44' 36" W	(T) S 24° 17' 08" E	
(G) N 3° 15' 24" E	(U) S 73° 37' 26" E	
(H) N 85° 26' 54" W	(V) N 3° 42' 22" E	
(I) N 83° 31' 02" W	(W) S 73° 37' 26" E	
(J) N 5° 20' 15" E	(X) N 4° 11' 35" E	
(K) S 85° 48' 29" E	(Y) S 74° 36' 26" W	
(L) N 87° 16' 09" E	(Z) S 23° 27' 16" W	
(M) S 2° 41' 34" E	(AA) S 74° 36' 27" W	
(N) N 3° 15' 24" E	(AB) N 4° 01' 25" E	

FOR INFORMATION ONLY

RECOMMENDED FOR APPROVAL _____	DESIGN ENGINEER _____	DATE _____
DESIGNED: JLC	DRAWN: JMM	
CHECKED: JMM	CHECKED: JLC	

INDIANA
 DEPARTMENT OF TRANSPORTATION
 PROPOSED
 GEOMETRIC LAYOUT SHEET

HORIZONTAL SCALE 1" = 100'	BRIDGE FILE TBD
VERTICAL SCALE	DESIGNATION 0900246
SURVEY BOOK	DWG. NO. 6 of 17
CONTRACT	SHEET NO. PROJECT 0810244



LA-EB-2 CURVE DATA
 PI 374+55.70
 N 110,515.58
 E 24,788.13
 Δ 0° 57' 26.60" (RT)
 D 0° 26' 51.44"
 R 12,800.00
 L 213.88
 T 106.94
 E 0.45
 SE = N.C.
 DS = 70 MPH

STR. NO 116
 142' OF 83" x 53"
 PIPE W/ PIPE ANCHOR REQ'D

FOR INFORMATION ONLY

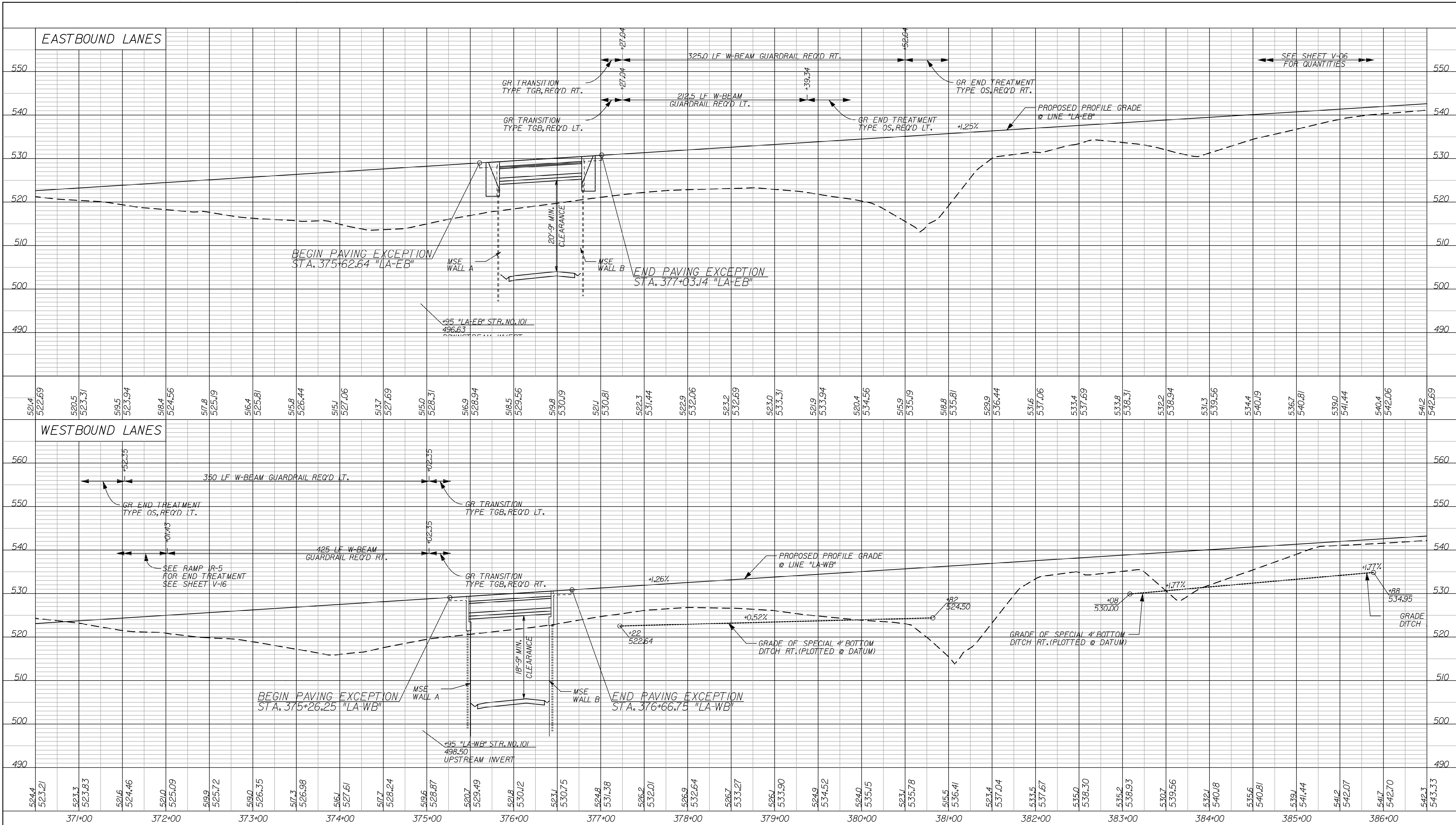
RECOMMENDED FOR APPROVAL	DESIGN ENGINEER	DATE
DESIGNED: JLC	DRAWN: AMH	
CHECKED: JMM	CHECKED: JMM	

INDIANA
 DEPARTMENT OF TRANSPORTATION
 PLAN SHEET
 STA. 371+00.00 TO 385+54.54 "LA-WB"
 STA. 371+33.55 TO 385+76.58 "LA-EB"

HORIZONTAL SCALE 1" = 50'	BRIDGE FILE TBD
VERTICAL SCALE	DESIGNATION 0900246
SURVEY BOOK	DWG. NO. PN-01
CONTRACT	SHEET NO. 8 of 17
	PROJECT 0810244

12/13/2011 12:59:28 PM
 C:\pro\tech\se\dms08859\EBT\p0001.dgn

10/21/2011 10:25:56 AM
 C:\temp\jms08659\EBF\001.dgn



RECOMMENDED FOR APPROVAL	DESIGN ENGINEER	DATE
DESIGNED:	JLC	DRAWN:
CHECKED:	JMM	CHECKED:
		JLC

INDIANA
 DEPARTMENT OF TRANSPORTATION
 PROFILE SHEET
 LINE "LA-EB" AND LINE "LA-WB"
 STA. 370+50 TO STA. 386+50

HORIZONTAL SCALE	BRIDGE FILE	
1" = 50'		
VERTICAL SCALE	DESIGNATION	
1" = 10'	0900246	
SURVEY BOOK	DWG. NO.	SHEET NO.
	V-01	9 of 17
CONTRACT	PROJECT	
	0810244	

ILLINOIS GRANT SURVEY / 23
UTICA TOWNSHIP
CLARK COUNTY

GOTTBRATH FAMILY TRUST

STATE OF INDIANA
(FARM FIELD)
P.O.T. STA. 41+61.85 "LS-3"
P.O.T. STA. 376+32.69 "LA"
BRIDGE 1B-7
SEE DES. NO. 0900246
P.O.T. STA. 42+12.66 "LS-3"
P.O.T. STA. 376+14.64 "LA-WB"

END CONSTRUCTION
P.O.T. STA. 43+21.51 "LS-3"

CURVE DATA		CURVE DATA		CURVE DATA	
PI	33+62.69	PI	823+12.47	PI	1119+89.32
Δ	37° 00' 24" (RT)	Δ	17° 20' 56" (LT)	Δ	118° 43' 43" (RT)
R	1,400.00	R	2,020.00	R	600.00
L	904.25	L	611.64	L	1,243.32
T	468.53	T	308.18	T	1,013.11
E	76.32	E	23.37	E	577.45
SE	= N.C.	SE	= 3.6%	SE	= 8.0%

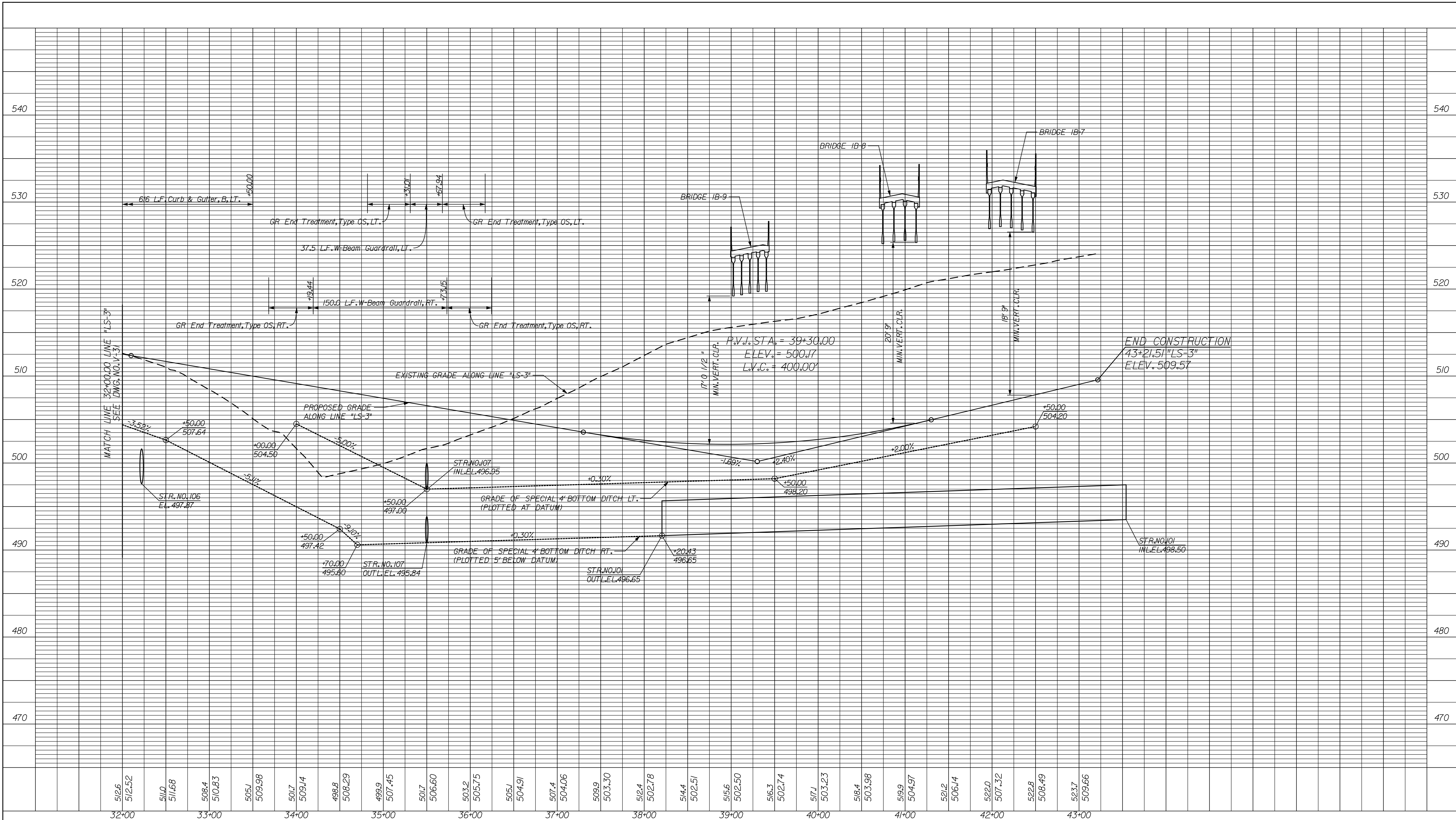
FOR INFORMATION ONLY

NOTE: SEE GPL-01 - GPL-05 FOR ALL GEOMETRY AND CURVE DATA
"ALL R/W ON THIS SHEET TO BE AS SHOWN;"
"LIMITED ACCESS PROVISIONS TO APPLY WHERE INDICATED;"
"ALL R/W ON THIS SHEET DESCRIBED FROM LINE "LS-3" EXCEPT AS SHOWN;"
"GROUP 1 POSTS REQUIRED FOR F.F.F."

RECOMMENDED FOR APPROVAL	DESIGN ENGINEER	DATE	INDIANA DEPARTMENT OF TRANSPORTATION		
DESIGNED: HMM	DRAWN: VMS	CHECKED: WHL	PLAN SHEET LINE "LS-3" STA. 32+00.00 TO STA. 43+05.67		
HORIZONTAL SCALE 1" = 50'			BRIDGE FILE TBD		
VERTICAL SCALE			DESIGNATION 0900246		
SURVEY BOOK			DWG. NO. PN-02	SHEET NO. 10 of 17	
CONTRACT			PROJECT 0810244		

10/21/2011 10:54:41 AM C:\temp\ams8659\Enr\LS3003.dgn

10/21/2011 10:46:24 AM
 G:\Temp\ams08659\Ev\LS3003.dgn



FOR INFORMATION ONLY

RECOMMENDED FOR APPROVAL _____	
DESIGN ENGINEER	DATE
DESIGNED: HMM	DRAWN: VMS
CHECKED: WHL	CHECKED: HMM

INDIANA
 DEPARTMENT OF TRANSPORTATION

 PROFILE SHEET
 LINE "LS-3"
 STA. 32+00 TO STA. 43+00

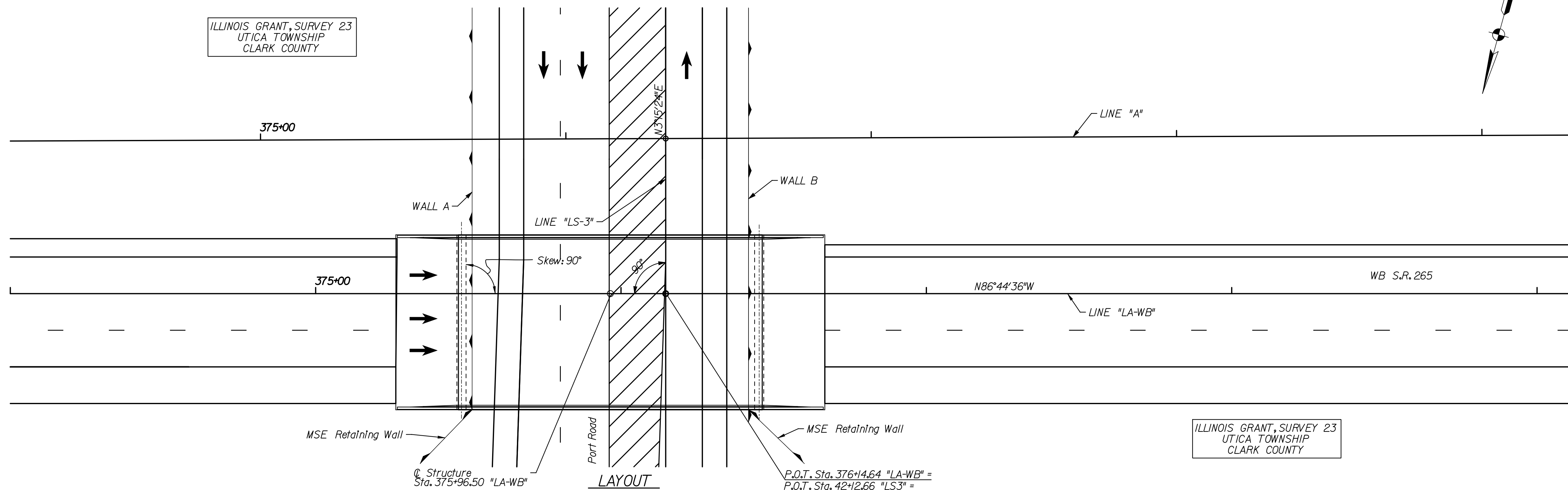
HORIZONTAL SCALE 1" = 50'	BRIDGE FILE TBD	
VERTICAL SCALE 1" = 10'	DESIGNATION 0900246	
SURVEY BOOK	DWG. NO. V-02	SHEET NO. 11 of 17
CONTRACT	PROJECT 0810244	

ILLINOIS GRANT, SURVEY 23
UTICA TOWNSHIP
CLARK COUNTY

UTILITIES
See Index, Sheet No. 2.

EXISTING STRUCTURE

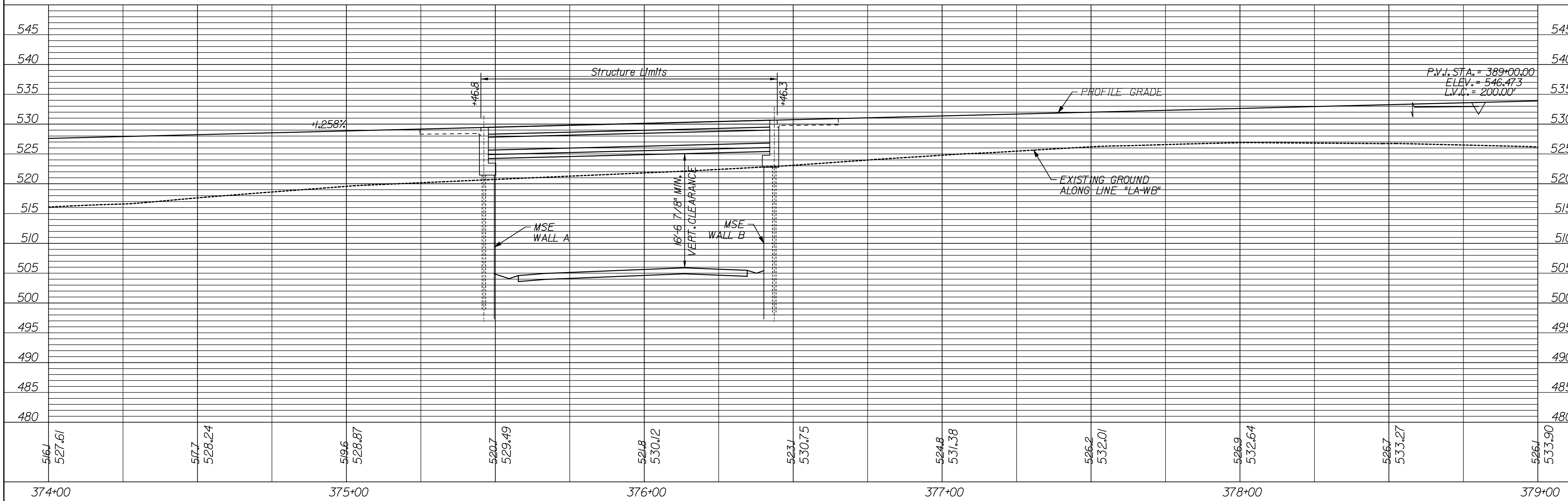
None



ILLINOIS GRANT, SURVEY 23
UTICA TOWNSHIP
CLARK COUNTY

Q. Structure Sta. 375+96.50 "LA-WB"
P.O.T. Sta. 376+14.64 "LA-WB" =
P.O.T. Sta. 42+2.66 "LS-3" =

LAYOUT



PRESTRESSED COMPOSITE
CONCRETE BULB-TEE BEAM BRIDGE
CLARK COUNTY
1 Span: 97'-6"
Skew: None
54'-4" Clear Roadway

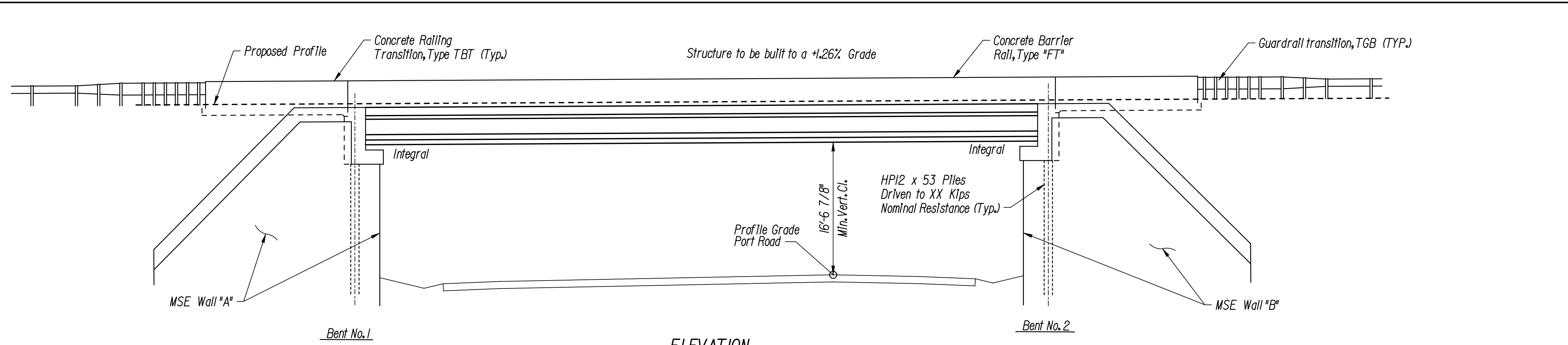
NOTE:
SEE ROAD PLANS (DES NO. 0810244)
FOR ALIGNMENT TIES AND BENCHMARKS.

RECOMMENDED FOR APPROVAL	DESIGN ENGINEER	DATE
DESIGNED: SJA	DRAWN: JLF	
CHECKED: REB	CHECKED: REB	

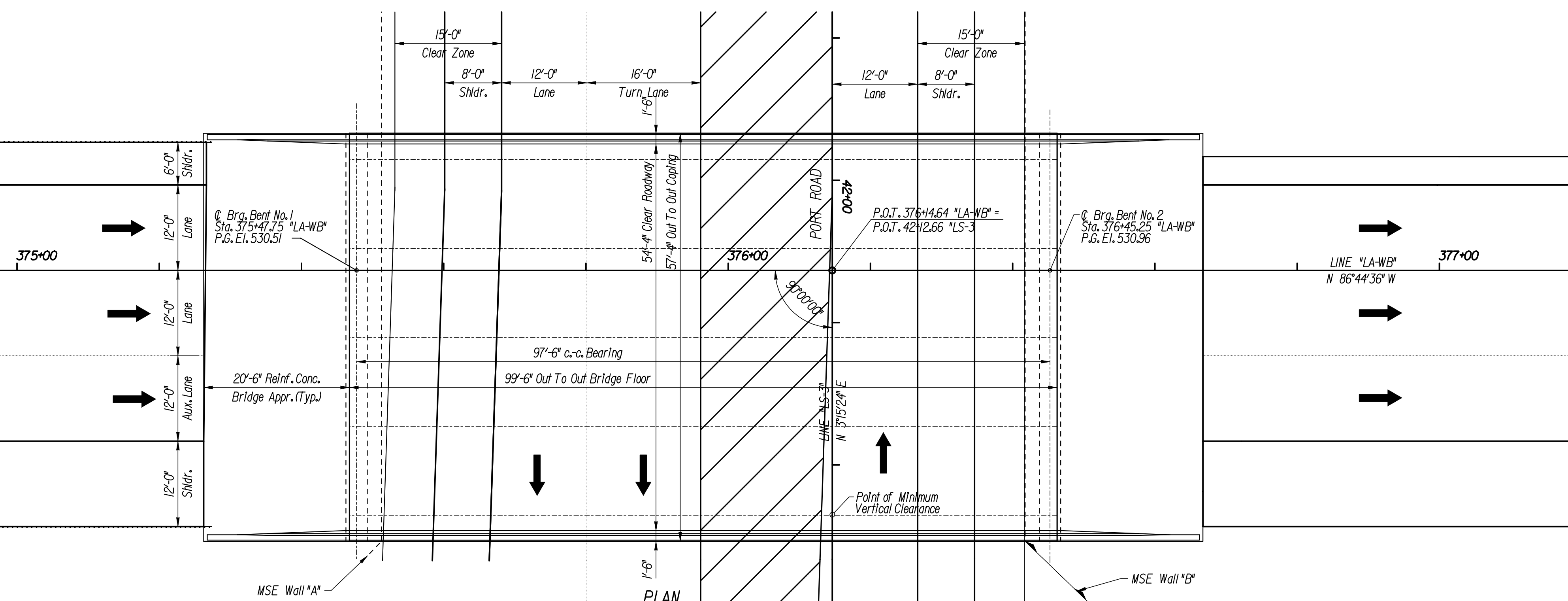
INDIANA
DEPARTMENT OF TRANSPORTATION
LAYOUT
WESTBOUND SR 265
OVER PORT ROAD ("LS-3")

HORIZONTAL SCALE 1" = 20'	BRIDGE FILE TBD	
VERTICAL SCALE 1" = 10'	DESIGNATION 0900246	
SURVEY BOOK	DWG. NO. LY-01	SHEET NO. 12 of 17
CONTRACT TBD	PROJECT 0810244	

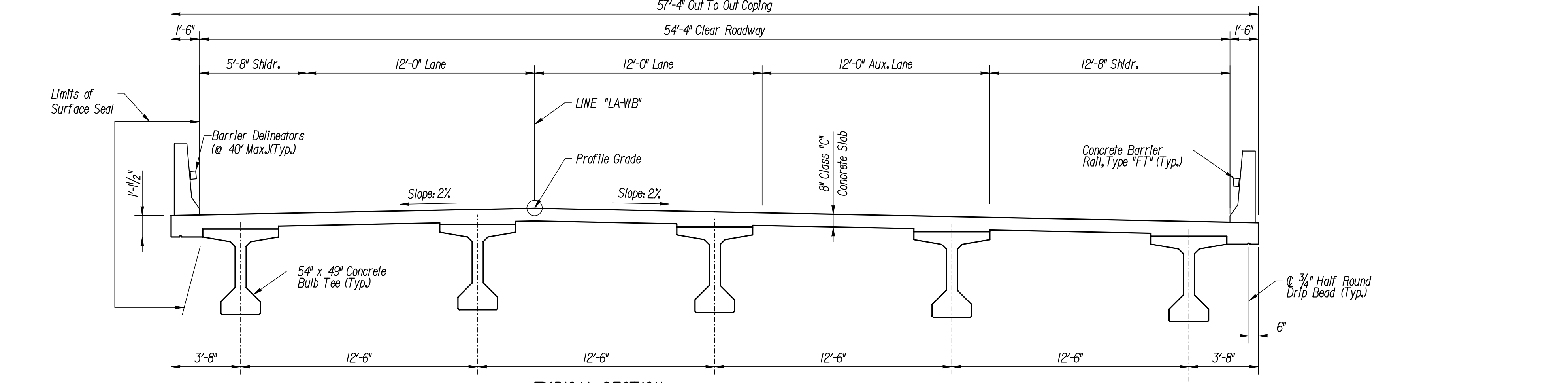
10/21/2011 10:07:11 AM
 C:\temp\jms\0810246\0900246.dgn



ELEVATION



PLAN



TYPICAL SECTION
Scale: 1/4" = 1'-0"

DESIGN DATA

Superstructure and substructure designed for HL-93 Loading in accordance with the AASHTO LRFD Bridge Design Specifications, 5th Edition, 2010, and Interims through 2010.

Dead Load: Actual weight plus 35 P.S.F. (Composite) for future wearing surface and 15 P.S.F. (Non-Composite) for permanent metal deck forms.

Floor slab designed with 7 1/2" structural depth plus a 1/2" integral wearing surface.

Seismic Load: Designed for Seismic Performance Zone I.

Class 'C' Concrete $f'_c = 4000$ p.s.i.
Reinforcing Steel (Grade 60) $F_y = 60,000$ p.s.i.

CONSTRUCTION LOADING

The exterior girder has been checked for strength, deflection, and overturning using the construction loads shown below. Cantilever overhang brackets were assumed for support of the deck overhang past the edge of the exterior girder. The finishing machine was assumed to be supported 6 in. outside the vertical coping form. The top overhang brackets were assumed to be located 6 in. past the edge of the vertical coping form. The bottom overhang brackets were assumed to be braced against the intersection of the girder bottom flange and web.

Deck Falsework Loads: Designed for 15 lb./sq.ft. for permanent metal stay-in-place deck forms, removable deck forms, and 2 ft. exterior walkway.

Construction Live Load: Designed for 20 lb./sq.ft. extending 2 ft. past the edge of coping and 75 lb./ft. vertical force applied at a distance of 6 in. outside the face of coping over a 30 ft. length of the deck centered with the finishing machine.

Finishing Machine Load: 4500 lb. distributed over 10 ft. along the coping.

Wind Load: Designed for 70 mph horizontal wind loading of 50 lb./sq.ft. in accordance with AASHTO Guide Design Specifications for Bridge Temporary Works (1995), Figure 2.1.

GENERAL NOTES

Reinforcing steel covering shall be 2 1/2" in the top and 1" min. in the bottom of floor slab, 3" in footings except bottom steel which shall be 4", and 2" in all other parts, unless noted.

Concrete in end bents, superstructure, and railings to be Class 'C'.

Continuous concrete pours shall be required between construction joints as shown in detail plans.

Chamfer exposed edges 1" unless noted.

Place r/prop at locations shown on the Layout.

Surface Seal top of bridge deck, concrete railings, copings, underside of deck from coping to face of outside beam, and all exposed wingwall faces. Estimated Quantity = XXXX SFt.

PRESTRESSED COMPOSITE
CONCRETE BULB-TEE BEAM BRIDGE
CLARK COUNTY
1 Span: 97'-6"
Slew: None
54'-4" Clear Roadway

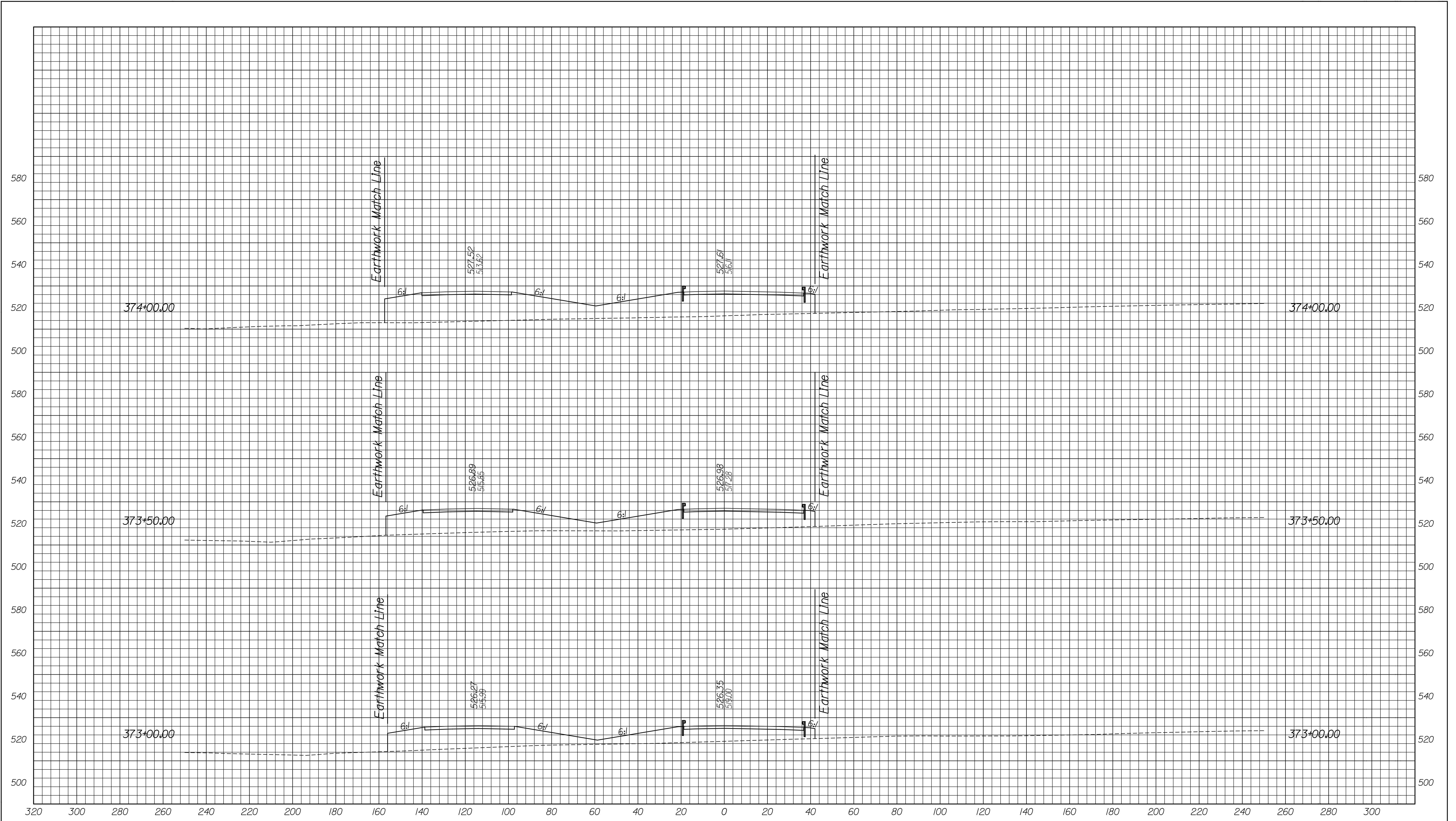
RECOMMENDED FOR APPROVAL	DESIGN ENGINEER	DATE
DESIGNED: SJA	DRAWN: JLF	
CHECKED: REB	CHECKED: SJA	

INDIANA
DEPARTMENT OF TRANSPORTATION
GENERAL PLAN
WESTBOUND SR265
OVER PORT ROAD

HORIZONTAL SCALE	BRIDGE FILE	
3/32" = 1'-0" U.I.	TBD	
VERTICAL SCALE	DESIGNATION	
	0900246	
SURVEY BOOK	DWG. NO.	SHEET NO.
	GE-01	13 of 17
CONTRACT	PROJECT	
	0810244	

12/13/2011 1:04:46 PM
 C:\pro\tech\se\dms08859\EBT\p001.dgn

10/21/2011 2:06:35 PM
 c:\temp\dms08659\EB7\rs01.dgn



FOR INFORMATION
ONLY

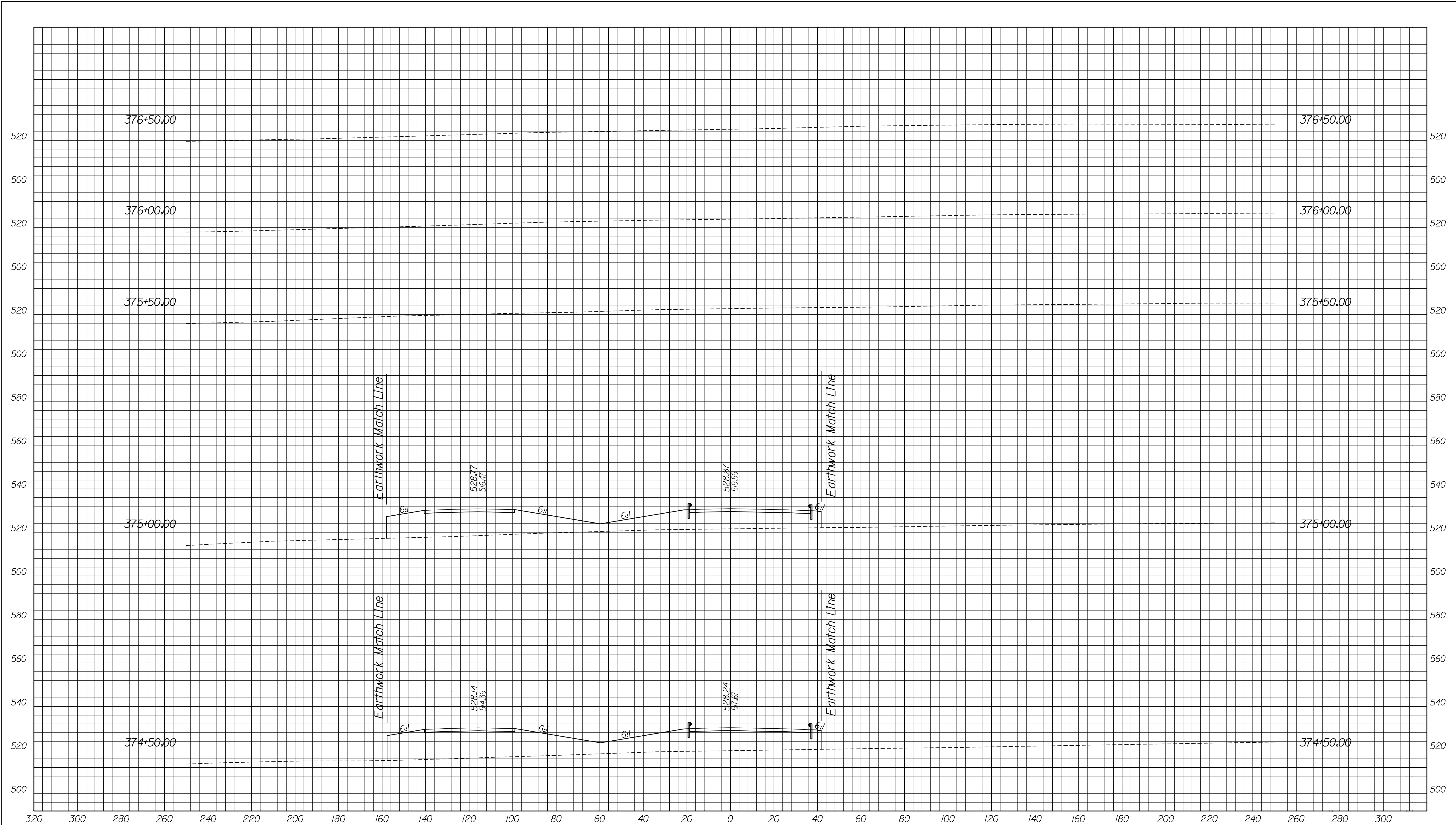
RECOMMENDED FOR APPROVAL	DESIGN ENGINEER	DATE
DESIGNED: AMH	DRAWN: AMH	
CHECKED: JLC	CHECKED: JMM	

INDIANA
DEPARTMENT OF TRANSPORTATION

CROSS SECTIONS
LINE "A"
STA. 373+00.00 TO 374+00.00

HORIZONTAL SCALE 1" = 20'	BRIDGE FILE TBD	
VERTICAL SCALE 1" = 20'	DESIGNATION 0900246	
SURVEY BOOK	DWG. NO. XS-01	SHEET NO. 14 of 17
CONTRACT	PROJECT 0810244	

10/21/2011 2:07:37 PM
 c:\temp\jms\08059\EBT\rs01.dgn



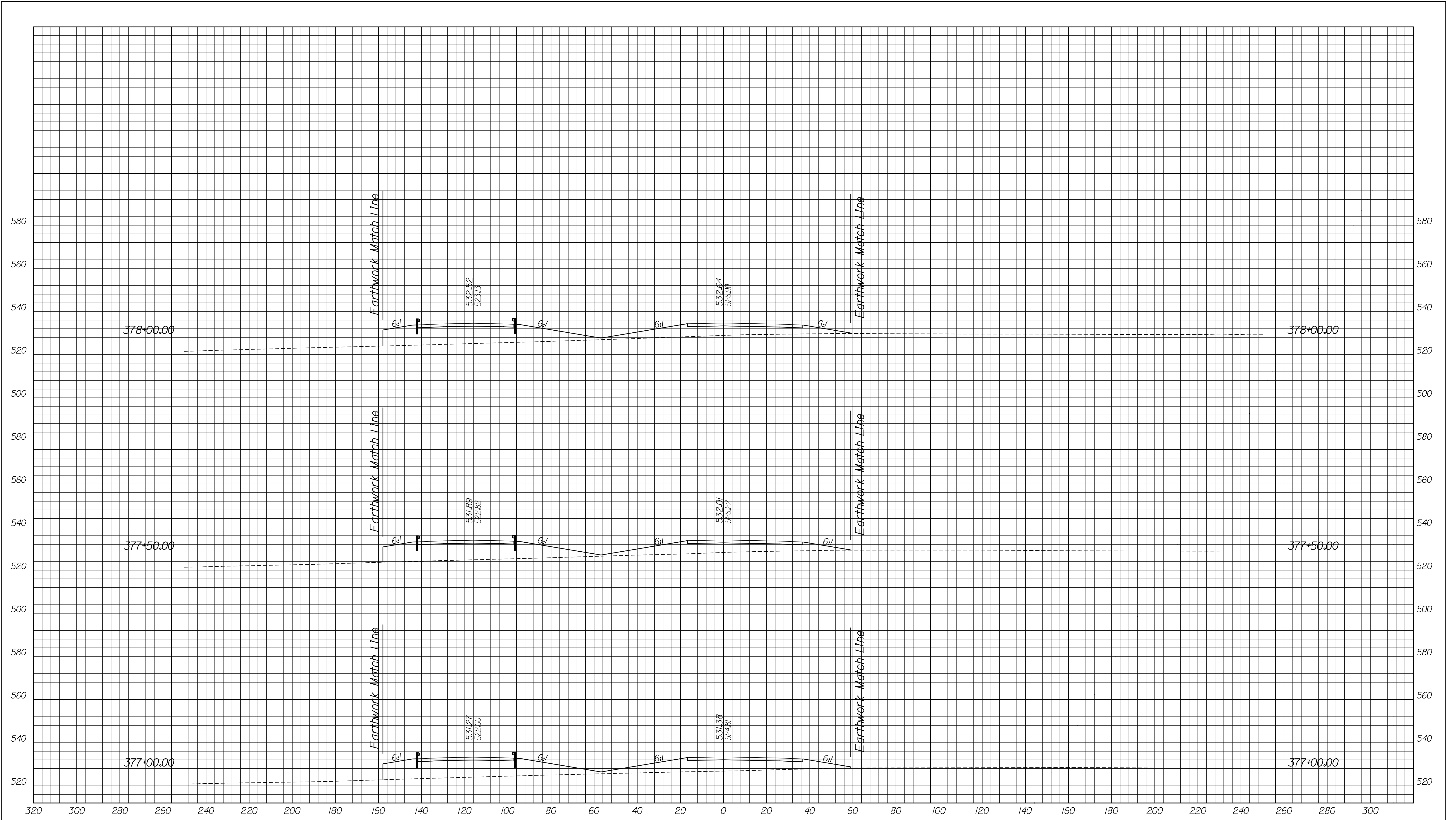
FOR INFORMATION ONLY

RECOMMENDED FOR APPROVAL	DESIGN ENGINEER	DATE
DESIGNED:	AMH	DRAWN:
CHECKED:	JLC	CHECKED:
		JMM

INDIANA
 DEPARTMENT OF TRANSPORTATION
 CROSS SECTIONS
 LINE "A"
 STA. 374+50.00 TO 376+50.00

HORIZONTAL SCALE	BRIDGE FILE	
1" = 20'	TBD	
VERTICAL SCALE	DESIGNATION	
1" = 20'	0900246	
SURVEY BOOK	DWG. NO.	SHEET NO.
	XS-02	15 of 17
CONTRACT	PROJECT	
	0810244	

10/21/2011 2:07:21 PM
 C:\temp\jms\8659\EB7xs01.dgn



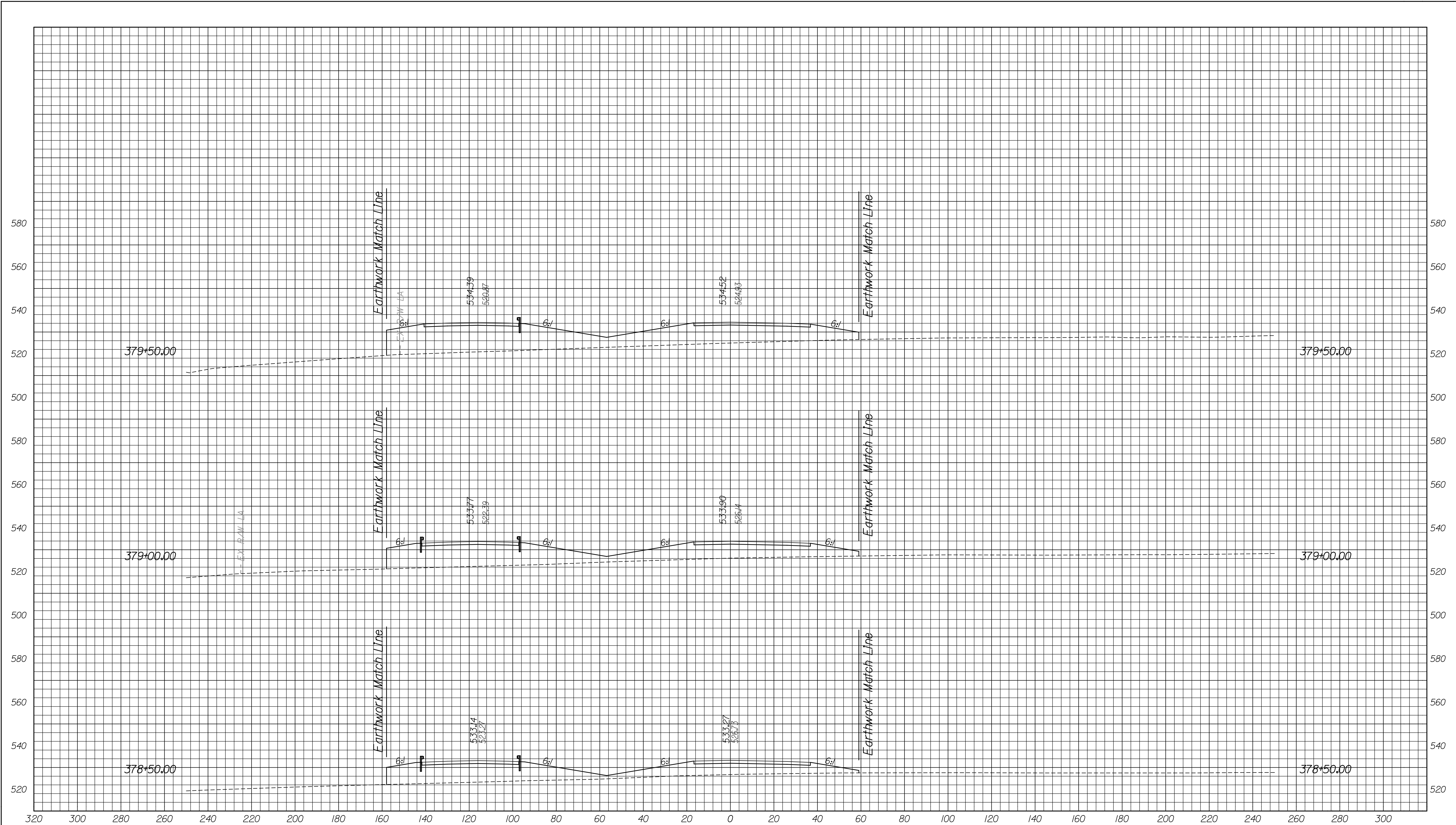
FOR INFORMATION
ONLY

RECOMMENDED FOR APPROVAL _____	
DESIGNED: AMH	DRAWN: AMH
CHECKED: JLC	CHECKED: JMM

INDIANA
 DEPARTMENT OF TRANSPORTATION
 CROSS SECTIONS
 LINE "A"
 STA. 377+00.00 TO 378+00.00

HORIZONTAL SCALE 1" = 20'	BRIDGE FILE TBD	
VERTICAL SCALE 1" = 20'	DESIGNATION 0900246	
SURVEY BOOK	DWG. NO. XS-03	SHEET NO. 16 of 17
CONTRACT	PROJECT 0810244	

10/21/2011 2:40:19 PM
 c:\temp\jms\080246\EB7xs01.dgn



FOR INFORMATION ONLY

RECOMMENDED FOR APPROVAL _____	
DESIGNED: AMH	DRAWN: AMH
CHECKED: JLC	CHECKED: JMM

INDIANA
 DEPARTMENT OF TRANSPORTATION
 CROSS SECTIONS
 LINE "A"
 STA. 378+50.00 TO 379+50.00

HORIZONTAL SCALE 1" = 20'	BRIDGE FILE 500	
VERTICAL SCALE 1" = 20'	TBD	
SURVEY BOOK	DWG. NO. XS-04	SHEET NO. 17 of 17
CONTRACT	PROJECT 080246	