

PROJECT	DESIGNATION
0810245	0900248
CONTRACT	

**INDIANA
DEPARTMENT OF
TRANSPORTATION**



STRUCTURE	TYPE	SPAN AND SKEW	OVER	STATION
265-10-9600	CONTINUOUS COMPOSITE PRESTRESSED CONCRETE BULB TEE BEAM BRIDGE	3 SPAN: 150'-0", 150'-0", 150'-0", SKEW: NONE	UTICA CHARLESTOWN RD AND LENTZIER CREEK TRIBUTARY	CENTERLINE STR 257+68.25 "A"

BRIDGE PLANS

ROUTE: S.R. 265 EB OVER UTICA CHARLESTOWN RD AND LENTZIER CREEK TRIBUTARY R.P. 12+17

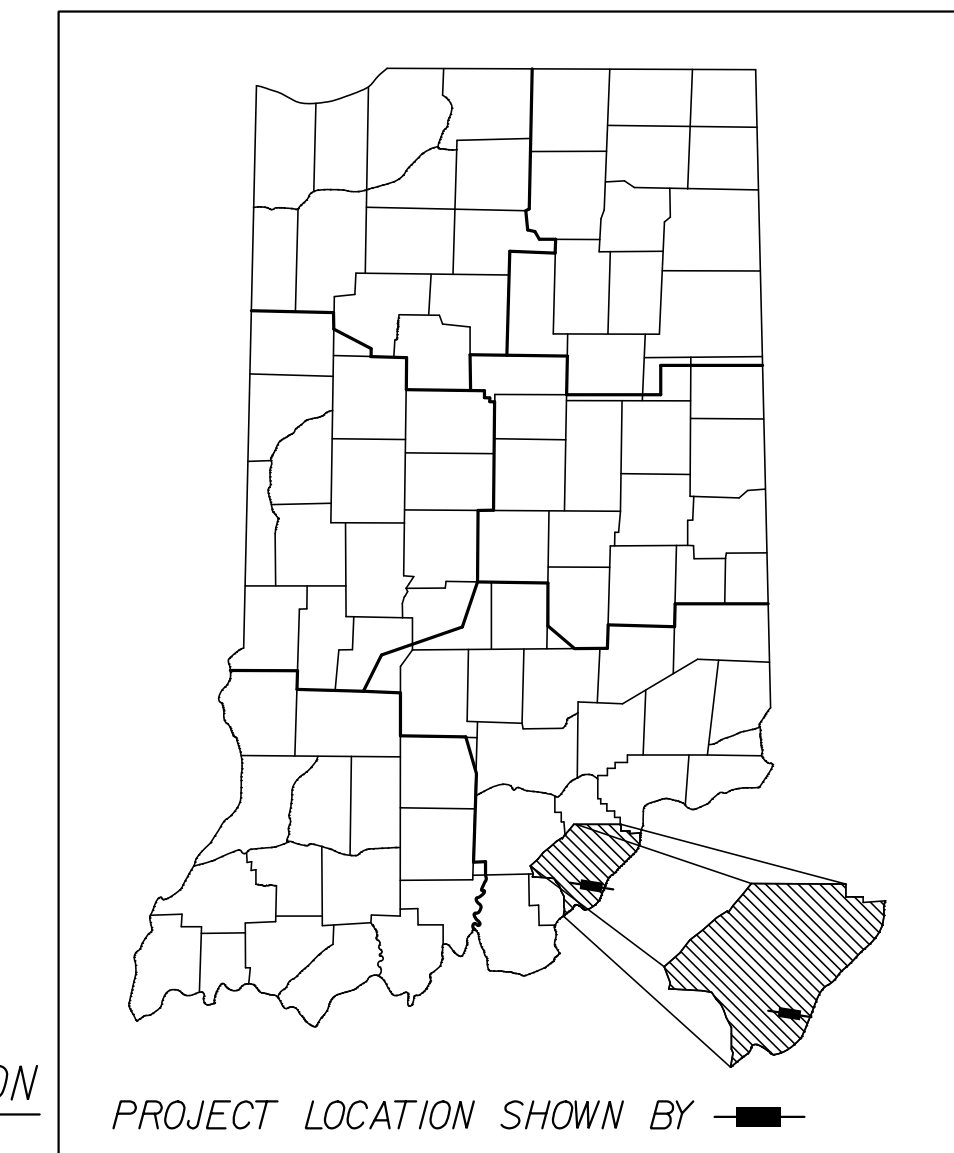
PROJECT NO. 0810245 P.E.

PROJECT NO. 0810245 R/W

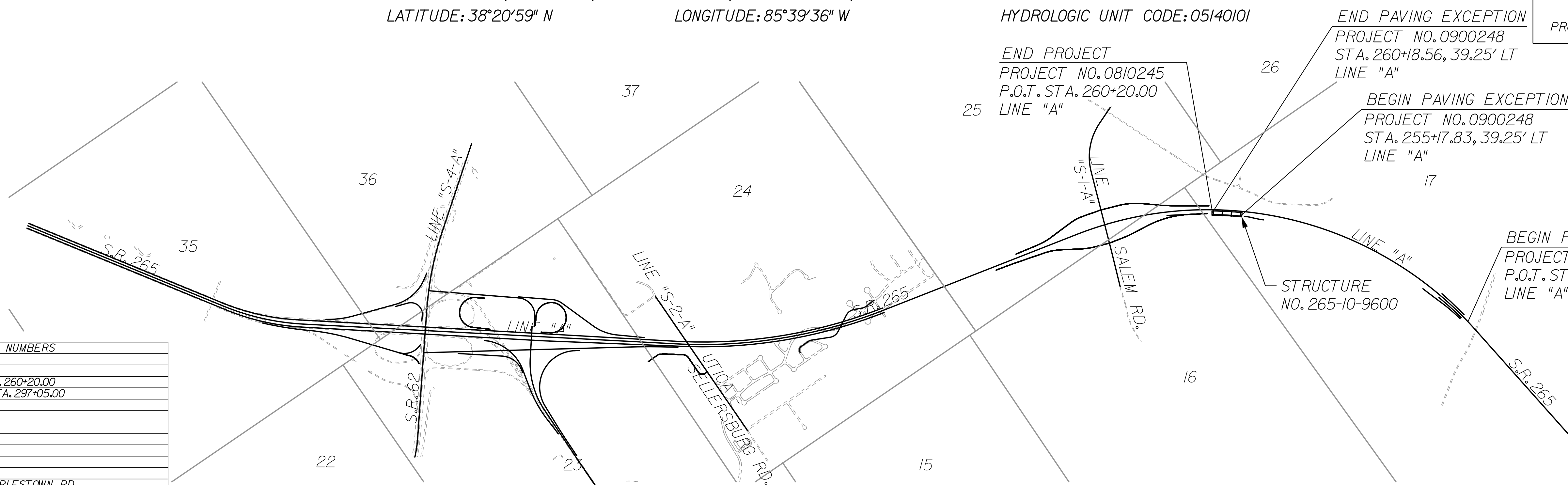
PROJECT NO. 0810245 CONST.

NOTE: FOR INDEX OF SHEET, NO.'S AND TRAFFIC DATA SEE DWG. NO. 1X-01.

STRUCTURE NO. 265-10-9600 IS A NEW BRIDGE ON THE PROPOSED S.R. 265 EB OVER UTICA CHARLESTOWN RD AND LENTZIER CREEK TRIBUTARY LOCATED APPROXIMATELY 2.5 MILES EAST OF THE S.R. 265 AND S.R. 62 INTERCHANGE IN ILLINOIS GRANT, SURVEY 17, UTICA TOWNSHIP, CLARK COUNTY, INDIANA
LATITUDE: 38°20'59" N LONGITUDE: 85°39'36" W

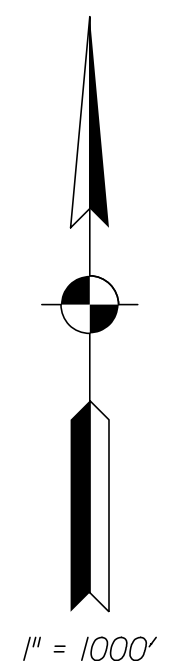


BRIDGE LENGTH: 0.085 mi.
ROAD LENGTH: 0.813 mi.
TOTAL LENGTH: 0.898 mi.
MAXIMUM GRADE: 2.20%



KIN DESIGNATION NUMBERS	
ROAD PLANS	
0810245	S.R. 265 STA. 212+74.51 TO STA. 260+20.00
0810242	S.R. 265 STA. 260+20.00 TO STA. 297+05.00
BRIDGE PLANS	
0900249	S.R. 265 WB OVER UTICA CHARLESTOWN RD

LOCATION MAP
CLARK COUNTY, INDIANA



NOTE: CONTRACTOR SHALL USE THESE PLANS IN CONJUNCTION WITH ROAD PLANS DES. NO. 0810245

FINAL
DECEMBER 30, 2011

(INDIANA DEPARTMENT OF TRANSPORTATION
STANDARD SPECIFICATIONS DATED 2012
TO BE USED WITH THESE PLANS)



MICHAEL BAKER JR., INC.
9750 ORMSBY STATION ROAD, SUITE 210
LOUISVILLE, KY 40223
PHONE (502) 339-3557
FAX (502) 339-4486

FEDERAL HIGHWAY ADMINISTRATION
U.S. DEPT. OF TRANSPORTATION
APPROVED: _____ DATE _____
DIVISION ADMINISTRATOR

PLANS
PREPARED BY: _____ PHONE NO. _____
CERTIFIED BY: _____ DATE _____
APPROVED FOR LETTING: _____ DATE _____
INDIANA DEPARTMENT OF TRANSPORTATION

BRIDGE FILE	
265-10-9600	
DESIGNATION	
0900248	
DWG. NO.	SHEET NO.
TI-01	1 of 12
CONTRACT	PROJECT
	0810245

12/29/2011 6:29:28 PM c:\pwworking\michael_baker_jr\office\projects\0810245\0810245.dwg

UTILITIES

TELECOMMUNICATIONS

Level 3 Communications
4010 HWY 3
Charlestown, IN 47111
Attn: Rick Stephens
(502) 836-5921
richard.stephens@level3.com

AT&T Indiana
P.O. Box 1405
510 E. Spring St.
New Albany, IN 47150
Attn: Monte Gullfon
(812) 948-7179
mg4381@ATT.com

Insight Communications
4701 Commerce Crossings Drive
Louisville, KY 40229
Attn: Nathan Howerton
(502) 639-6838
Howerton.N@insight.com

WATER

Watson Water
4106 Utica-Sellersburg Road
Jeffersonville, IN 47130
Attn: Glenn Freeman
(812) 246-5416
glenn@watson-water.com

ELECTRIC

Clark County REMC
7810 SR 60
Sellersburg, IN 47172
Attn: Larry Edwards
(812) 248-7504
ledwards@theremc.net

Duke Energy
1619 West Defenbaugh Street
Kokomo, IN 46902
Attn: Jim Shields
(317) 402-2745
Jim.Shields@duke-energy.com

GAS PIPELINES

Vectren Energy Delivery of Indiana
2520 Lincoln Drive
Clarksville, IN 47129
Attn: Paul Schroeder
(812) 948-4954 (office)
(502) 445-1934 (cell)
pschroeder@vectren.com

SANITARY

City of Jeffersonville
1420 Pennsylvania Ave.
Jeffersonville, IN 47130
Attn: Len Ashack
(812) 285-6451
lashack@cityofjeff.net

MISCELLANEOUS AGENCIES

CSX Transportation
500 WATER STREET
JACKSONVILLE, FL 32202
Attn: Leslie L. Scherr
(904) 366-3057
Leslie_Scherr@CSX.com

Ports of Indiana- Jeffersonville
5100 Port Rd.
Jeffersonville, IN 47130
Attn: Scott Stewart
(812) 283-9662
s.stewart@portsofindiana.com



GENERAL NOTES

- THE PLANS SHOW SOME OF THE UTILITIES LOCATED WITHIN THE LIMITS OF THE CONTRACT ACCORDING TO INFORMATION OBTAINED FROM THE VARIOUS UTILITY COMPANIES. THE ACCURACY OF THE PLANS IN THIS RESPECT IS NOT GUARANTEED.
THE FINAL CROSS SECTIONS OF THE GRADING CONTRACT WILL BE THE ORIGINAL CROSS SECTIONS OF THE PAVING CONTRACT. HOWEVER, PARTIAL OR COMPLETE CROSS SECTIONS SHALL BE TAKEN IF NECESSARY TO DETERMINE THE ACTUAL EXCAVATION QUANTITIES.
THE PAPER RELOCATION WILL BE CROSS SECTIONED BY THE ENGINEER BEFORE CONSTRUCTION.
** SEEDING MIXTURE, R TO BE PLACED ON ALL DISTURBED EARTH AREAS EXCEPT WHERE OTHERWISE SPECIFIED.

** REPRESENTS GENERAL NOTES REQUIRED.

REVISIONS

Table with 3 columns: NO., DATE, DESCRIPTION

DRAWING INDEX

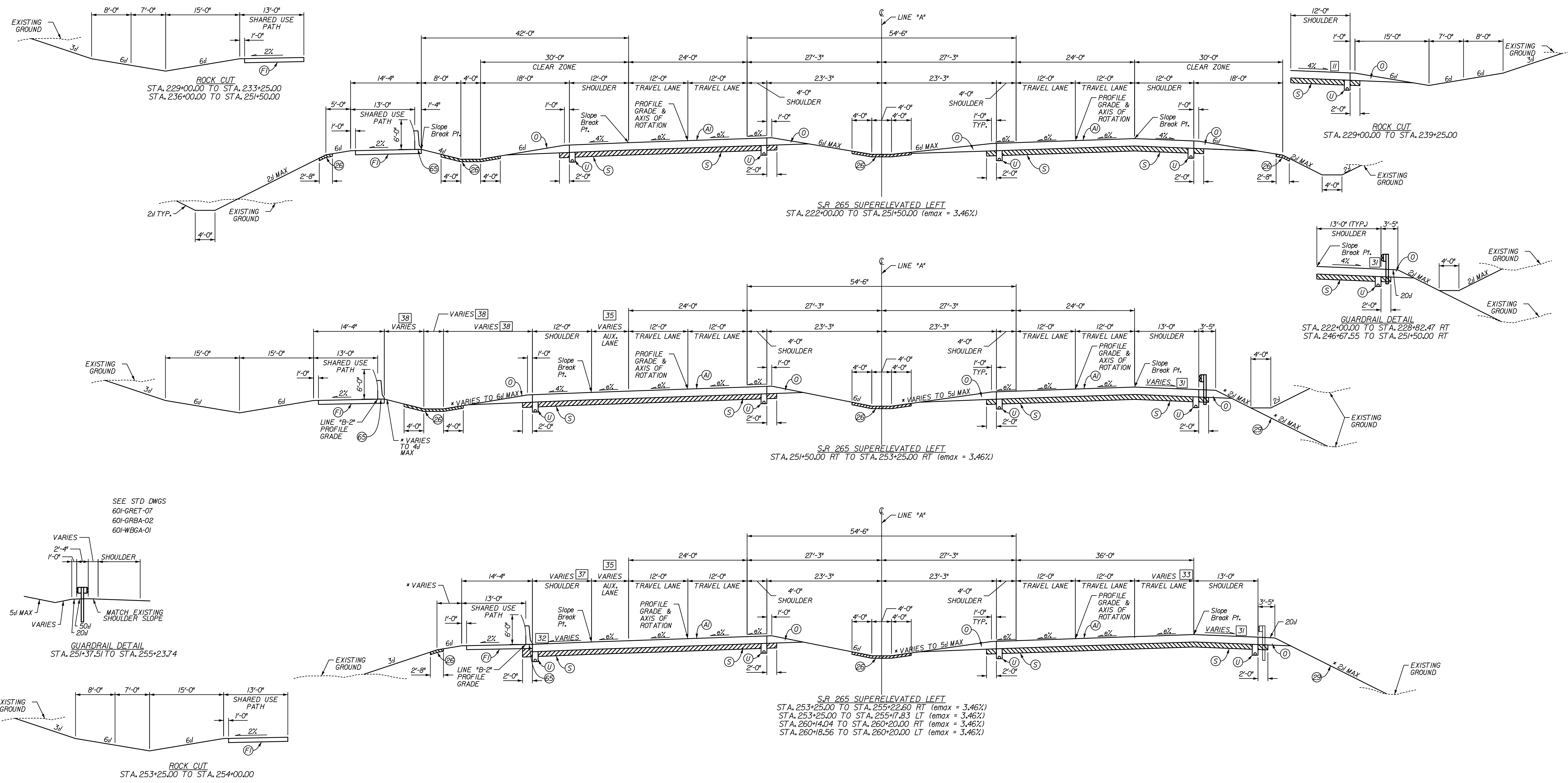
Table with 3 columns: SHEET NO., DRAWING NO., SHEET DESIGNATION

Table with 11 columns: ROADWAY, ALIGNMENT, A.A.D.T. 2030, D.H.V. 2030, % A.D.T. TRUCKS, % D.H.V. TRUCKS, DESIGN SPEED, PROJECT DESIGN CRITERIA, FUNCTIONAL CLASSIFICATION, RURAL / URBAN, TERRAIN, ACCESS CONTROL

RECOMMENDED FOR APPROVAL DESIGN ENGINEER DATE
DESIGNED: CYY DRAWN: CEW
CHECKED: MBJ CHECKED: PDO

INDIANA DEPARTMENT OF TRANSPORTATION
INDEX SHEET

Table with 2 columns: SCALE, BRIDGE FILE
HORIZONTAL SCALE: NA BRIDGE FILE: 265-10-9600
VERTICAL SCALE: NA DESIGNATION: 0900248



- [31] 4.00%
STA. 251+50.00 TO STA. 252+53.00
4.00% TO 0.00%
STA. 252+53.00 TO STA. 253+71.12
0.00% TO -3.46%
STA. 253+71.12 TO STA. 254+73.00
-3.46%
STA. 254+73.00 TO STA. 255+22.60
STA. 260+4.04 TO STA. 260+20.00
- [32] -4.00%
STA. 253+25.00 TO STA. 254+56.76
-4.00% TO -3.46%
STA. 254+56.76 TO STA. 254+73.00
-3.46%
STA. 254+73.00 TO STA. 255+17.83
STA. 260+18.56 TO STA. 260+20.00
- [33] 0'-0"
STA. 253+25.00 TO STA. 253+75.00
0'-0" TO 12'-0"
STA. 253+75.00 TO STA. 254+75.00
12'-0"
STA. 254+75.00 TO STA. 255+22.60
STA. 260+4.04 TO STA. 260+20.00
- [35] 0'-0"
STA. 251+50.00 TO STA. 251+75.00
0'-0" TO 12'-0"
STA. 251+75.00 TO STA. 254+75.00
12'-0"
STA. 254+75.00 TO STA. 255+17.83
STA. 260+18.56 TO STA. 260+20.00
- [37] 12'-0"
STA. 253+25.00
25'-10 1/8" TO 12'-8"
STA. 253+25.00 TO STA. 254+75.00
12'-8"
STA. 254+75.00 TO STA. 255+17.83
STA. 260+18.56 TO STA. 260+20.00
- [38] WIDTH TO BE DETERMINED AT STAGE 2

FOR INFORMATION ONLY

LEGEND

- (A) XX' OC/OA PAVEMENT (TO BE DETERMINED)
- (V) VARIABLE DEPTH COMPACTED AGGREGATE, NO. 53
- (S) SUBGRADE TREATMENT, TYPE xx
- (U) 6" UNDERDRAIN
- (26) SODDING, NURSERY
- (29) SEEDING, R
- (65) CONCRETE BARRIER, 45", SINGLE FACE
- (F) HMA PAVEMENT FOR PATH (TO BE DETERMINED)

RECOMMENDED FOR APPROVAL _____
DESIGN ENGINEER DATE

DESIGNED: CY DRAWN: CEW

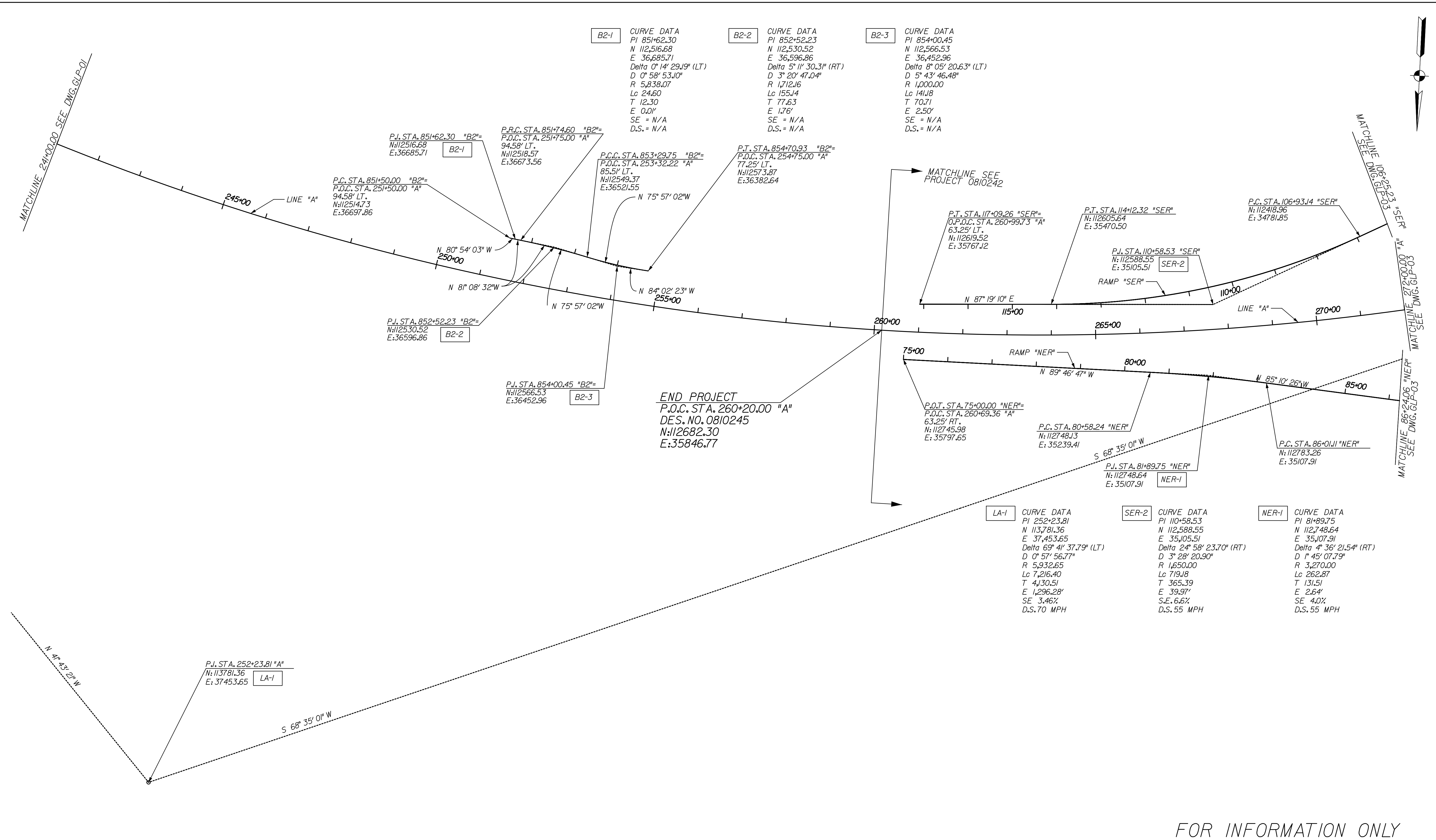
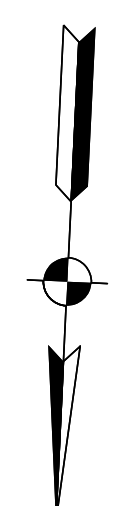
CHECKED: MBJ CHECKED: PDO

INDIANA DEPARTMENT OF TRANSPORTATION

TYPICAL CROSS SECTIONS
LINE "A"

HORIZONTAL SCALE 1" = 10'	BRIDGE FILE 265-10-9600
VERTICAL SCALE	DESIGNATION 0900248
SURVEY BOOK	DWG. NO. TS-01
CONTRACT	SHEET NO. 3 of 12
	PROJECT 0810245

6/4/01 PM
 12/29/2011
 C:\pwworking\indot\proj\lewis\workspace\brms\1895\2276\001.dgn



B2-1 CURVE DATA
 PI 851+62.30
 N 112,516.68
 E 36,685.71
 Delta 0° 14' 29.19" (LT)
 D 0° 58' 53.10"
 R 5,838.07
 Lc 24.60
 T 12.30
 E 0.01'
 SE = N/A
 D.S. = N/A

B2-2 CURVE DATA
 PI 852+52.23
 N 112,530.52
 E 36,596.86
 Delta 5° 11' 30.31" (RT)
 D 3° 20' 47.04"
 R 1,712.16
 Lc 155.14
 T 77.63
 E 1.76'
 SE = N/A
 D.S. = N/A

B2-3 CURVE DATA
 PI 854+00.45
 N 112,566.53
 E 36,452.96
 Delta 8° 05' 20.63" (LT)
 D 5° 43' 46.48"
 R 1,000.00
 Lc 141.8
 T 70.71
 E 2.50'
 SE = N/A
 D.S. = N/A

LA-1 CURVE DATA
 PI 252+23.81
 N 113,781.36
 E 37,453.65
 Delta 69° 41' 37.79" (LT)
 D 0° 57' 56.77"
 R 5,932.65
 Lc 7,216.40
 T 4,130.51
 E 1,296.28'
 SE 3.46%
 D.S. 70 MPH

SER-2 CURVE DATA
 PI 110+58.53
 N 112,588.55
 E 35,105.51
 Delta 24° 58' 23.70" (RT)
 D 3° 28' 20.90"
 R 1,650.00
 Lc 719.18
 T 365.39
 E 39.97'
 S.E. 6.6%
 D.S. 55 MPH

NER-1 CURVE DATA
 PI 81+89.75
 N 112,748.64
 E 35,107.91
 Delta 4° 36' 21.54" (RT)
 D 1° 45' 07.79"
 R 3,270.00
 Lc 262.87
 T 131.51
 E 2.64'
 SE 4.0%
 D.S. 55 MPH

END PROJECT
 P.O.C. STA. 260+20.00 "A"
 DES. NO. 0810245
 N: 112682.30
 E: 35846.77

FOR INFORMATION ONLY

RECOMMENDED FOR APPROVAL _____		DESIGN ENGINEER _____	DATE _____
DESIGNED: _____	CY _____	DRAWN: _____	CEW _____
CHECKED: _____	MBJ _____	CHECKED: _____	PDO _____

INDIANA
 DEPARTMENT OF TRANSPORTATION

PROPOSED
 GEOMETRIC LAYOUT SHEET

HORIZONTAL SCALE 1" = 100'	BRIDGE FILE 265-10-9600	
VERTICAL SCALE	DESIGNATION 0900248	
SURVEY BOOK	DWG. NO. GLP-01	SHEET NO. 4 of 12
CONTRACT	PROJECT 0810245	

12/29/2011 6:29:50 PM
 C:\pwworkspace\dotcom\dotcom\proj\0810245\0810245.dwg

CURVE DATA
 P.J. 851+62.30 "B-2"
 $\Delta = 0^\circ 14' 29.19''$ RT
 T = 12.30'
 L = 24.60'
 R = 5,838.07'
 E = 0.01'

CURVE DATA
 P.J. 852+52.23 "B-2"
 $\Delta = 5^\circ 11' 30.31''$ RT
 T = 77.63'
 L = 155.14'
 R = 1,712.16'
 E = 1.76'

CURVE DATA
 P.J. 854+00.45 "B-2"
 $\Delta = 8^\circ 05' 20.63''$ LT
 T = 70.71'
 L = 141.88'
 R = 1,000.00'
 E = 2.50'

CURVE DATA
 P.J. 110+58.53 "SER"
 $\Delta = 24^\circ 58' 24''$ RT
 T = 365.39'
 L = 719.18'
 R = 1,650.00'
 E = 39.97'

CURVE DATA
 P.J. 252+23.81 "A"
 $\Delta = 69^\circ 41' 38''$ LT
 T = 4130.51'
 L = 7216.40'
 R = 5,932.65'
 E = 1,296.28'
 S.E. = 3.46%

ILLINOIS GRANT, SURVEY 17
 UTICA TOWNSHIP
 CLARK COUNTY

SEC. 16, T-2-S, R-6-E
 UTICA TOWNSHIP
 CLARK COUNTY

SEC. 25, T-2-S, R-6-E
 UTICA TOWNSHIP
 CLARK COUNTY

L.A., R/W & A.C.L. & F.F.T.F.
 w/ Gp. 1 Posts Req'd.

MARK S. & JACQUELINE JAMES

SEC. 16, T-2-S, R-6-E
 UTICA TOWNSHIP
 CLARK COUNTY

END PROJECT
 Sta. 260+20.00 "A"
 MAINLINE S.R. 265
 (SEE DES. NO. 0810242)
 N: 112682.34
 E: 35846.77

END PAVING EXCEPTION
 STA. 260+14.04 "A", 39.25' RT.
 N: 112721.51
 E: 35853.25

BEGIN PAVING EXCEPTION
 STA. 255+22.60 "A", 39.25' RT.
 N: 112694.53
 E: 36347.06

END PAVING EXCEPTION
 STA. 260+8.56 "A", 39.25' LT.
 N: 112643.08
 E: 35847.72

BEGIN PAVING EXCEPTION
 STA. 255+7.83 "A", 39.25' LT.
 N: 112615.93
 E: 36344.25

ALL R/W ON THIS SHEET TO BE AS SHOWN.
 LIMITED ACCESS PROVISIONS TO APPLY WHERE INDICATED.
 ALL R/W ON THIS SHEET DESCRIBED FROM LINE "A"
 EXCEPT AS SHOWN

R/W LEGEND
 [B] BEGIN L.A. R/W
 [E] END L.A. R/W

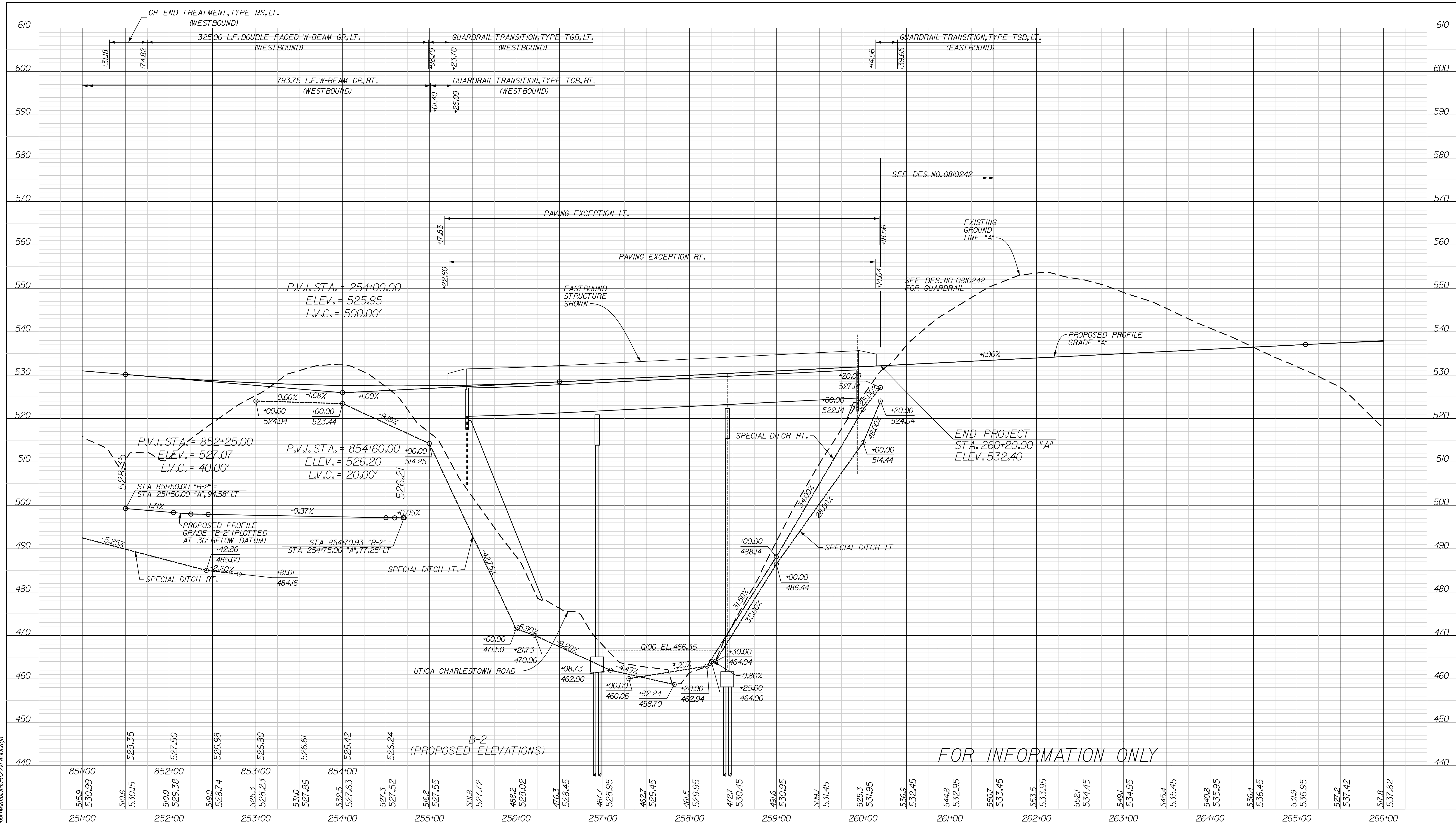
RECOMMENDED FOR APPROVAL _____
 DESIGN ENGINEER DATE
 DESIGNED: CY DRAWN: CEW
 CHECKED: MJB CHECKED: PDO

INDIANA DEPARTMENT OF TRANSPORTATION
 PLAN SHEET
 LINE "A"
 STA. 251+00 TO STA. 266+00

HORIZONTAL SCALE 1" = 50'	BRIDGE FILE 265-10-9600
VERTICAL SCALE	DESIGNATION 0900248
SURVEY BOOK	DWG. NO. PW-04
CONTRACT	SHEET NO. 15 of 12
	PROJECT 0810245

FOR INFORMATION ONLY

6:3000 PM 12/29/2011
 C:\pwworking\dotcom\dotcom-arj\lewis\workspace\189522\p01.dwg



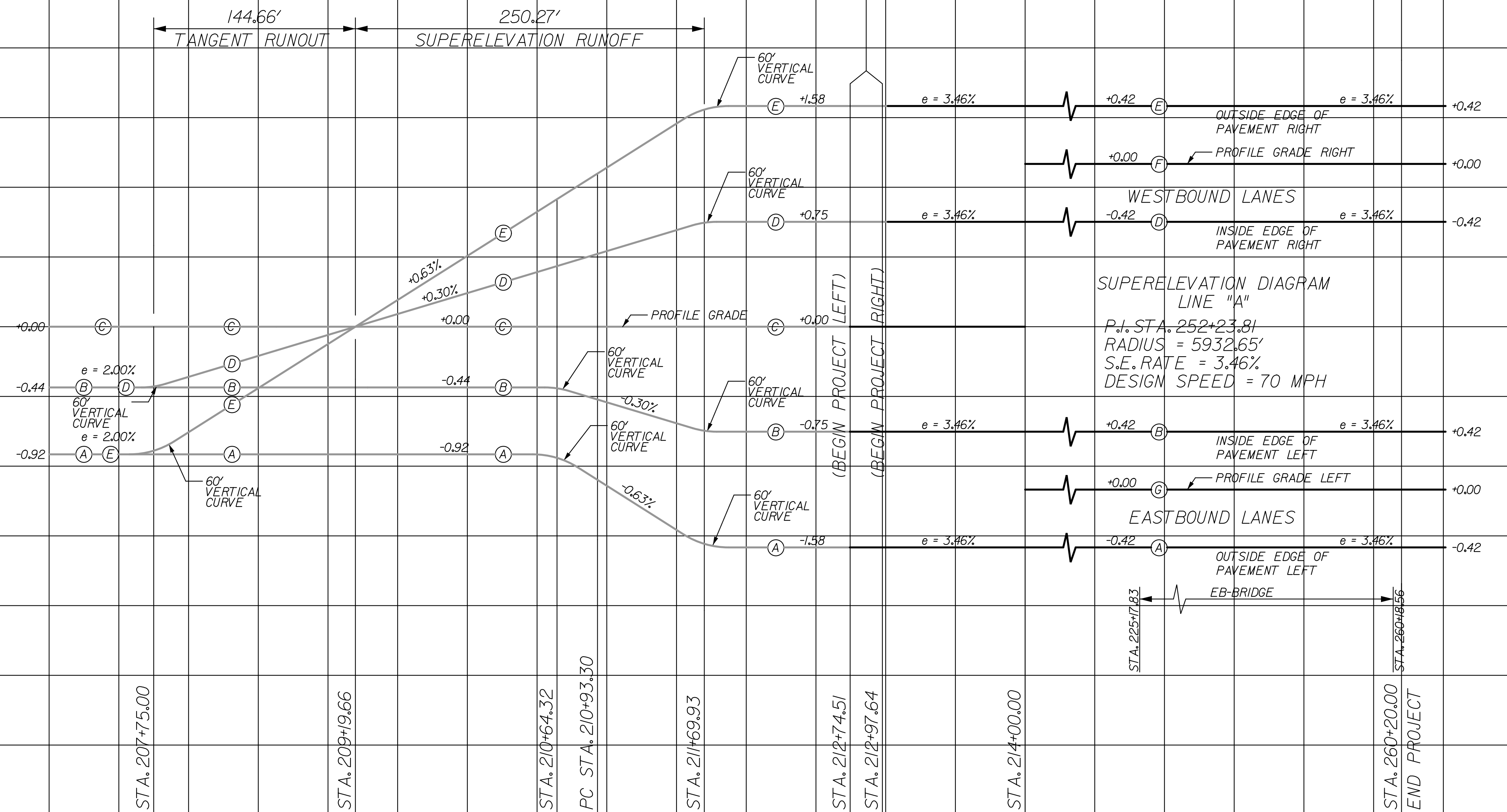
851+00	515.9	530.99	506	530.15	528.35	527.50	526.98	526.80	531.0	527.86	532.5	527.63	527.3	527.52	516.8	527.55	501.8	527.72	488.2	528.02	476.3	528.45	467.7	528.95	462.7	529.45	461.5	529.95	472.7	530.45	491.6	530.95	508.7	531.45	525.3	531.95	536.9	532.45	544.8	532.95	550.7	533.45	553.5	533.95	552.1	534.45	549.1	534.95	545.4	535.45	540.8	535.95	536.4	536.45	531.9	536.95	527.2	537.42	517.8	537.82
251+00		252+00		253+00		254+00		255+00		256+00		257+00		258+00		259+00		260+00		261+00		262+00		263+00		264+00		265+00		266+00																														

RECOMMENDED FOR APPROVAL	DESIGN ENGINEER	DATE	INDIANA DEPARTMENT OF TRANSPORTATION PROFILE SHEET STA. 251+00 TO STA. 266+00 LINE "A"		HORIZONTAL SCALE	BRIDGE FILE	
DESIGNED: CYY	DRAWN: CEW	CHECKED: MBJ			CHECKED: PDO	VERTICAL SCALE	DESIGNATION
					SURVEY BOOK	DWG. NO.	SHEET NO.
				CONTRACT	V-01	6 of 12	
				PROJECT 0810245			

6:30:11 PM
 12/29/2011
 C:\pwworking\indot\proj\0810245\dwg\0810245-251-266.dwg

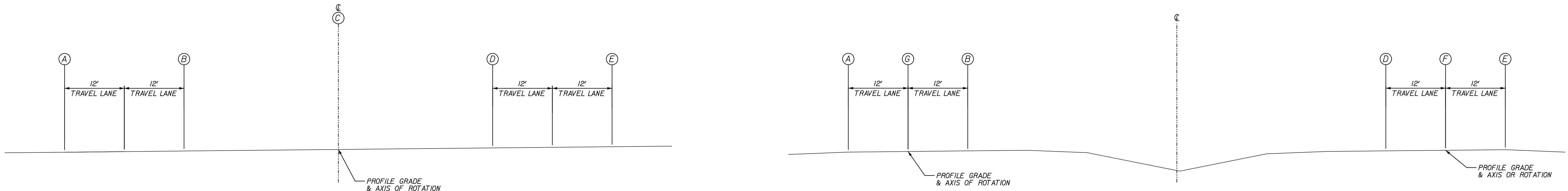
SEE EAST END BRIDGE PROJECT (SECTION 5)

SEE DESIGN NO.0810242



SUPERELEVATION DIAGRAM
LINE "A"
P.I. STA. 252+23.81
RADIUS = 5932.65'
S.E. RATE = 3.46%
DESIGN SPEED = 70 MPH

206+00 207+00 208+00 209+00 210+00 211+00 212+00 213+00 214+00 259+00 260+00 261+00



TYPICAL SECTION
NOT TO SCALE
STA. 212+74.51 LT. TO STA. 214+00.00 LT.
STA. 212+97.64 RT. TO STA. 214+00.00 RT.

NOTE: SEE SECTIONS FOR LOCATION OF PROFILE GRADE LINE

TYPICAL SECTION
NOT TO SCALE
STA. 214+00.00 TO STA. 260+20.00

FOR INFORMATION ONLY

12/29/2011 6:30:17 PM
 C:\pwworkspace\louis.voxaborn\dwg\0810242\0810242.dwg

RECOMMENDED FOR APPROVAL _____ DESIGN ENGINEER DATE	INDIANA DEPARTMENT OF TRANSPORTATION		HORIZONTAL SCALE 1" = 50'		BRIDGE FILE 265-10-9600	
			VERTICAL SCALE 1" = 0.5'		DESIGNATION 0900248	
DESIGNED: CYY	DRAWN: CEW	SUPERELEVATION DIAGRAM		SURVEY BOOK	DWG. NO.	SHEET NO.
CHECKED: MBJ	CHECKED: PDO			CONTRACT	SE-01	7 of 12
				PROJECT 0810245		

ILLINOIS GRANT, SURVEY 17
UTICA TOWNSHIP
CLARK COUNTY



SITUATION PLAN
CONTOUR INTERVAL = 1'

EXISTING STRUCTURE

NO PRESENT STRUCTURE

UTILITIES

SEE INDEX SHEET, SEE SHEET 2.

HORIZONTAL CURVE DATA

CURVE DATA
S.R. 265
P.T. 252+23.81
 $\Delta = 69^\circ 41' 38''$ LT
T = 4130.51'
L = 7,216.40'
R = 5,932.65'
E = 1,296.28'
S.E. = 3.46%

END PROJECT
Sta. 260+20.00 "A"
MAINLINE S.R. 265
(SEE DES. NO. 0810242)
N: 112682.34
E: 35846.77

HYDRAULIC DATA TABLE

ITEM	UNIT	PROPOSED STRUCTURE
Drainage Area	sq mi	1.01
Q100 Discharge	cfs	1600
Q100 Elevation	ft	466.35
Q100 Backwater	ft	0.08
Q100 Velocity	ft/sec	2.89
Waterway Area Through Structure	sft	569.89
Minimum Low Structure Elevation	ft	524.5
Discharge Through Bridge	cft	1600
Discharge Over Road	cft	0
Roadway Overflow Area	sft	0
Q500 Scour Elevation		448.59

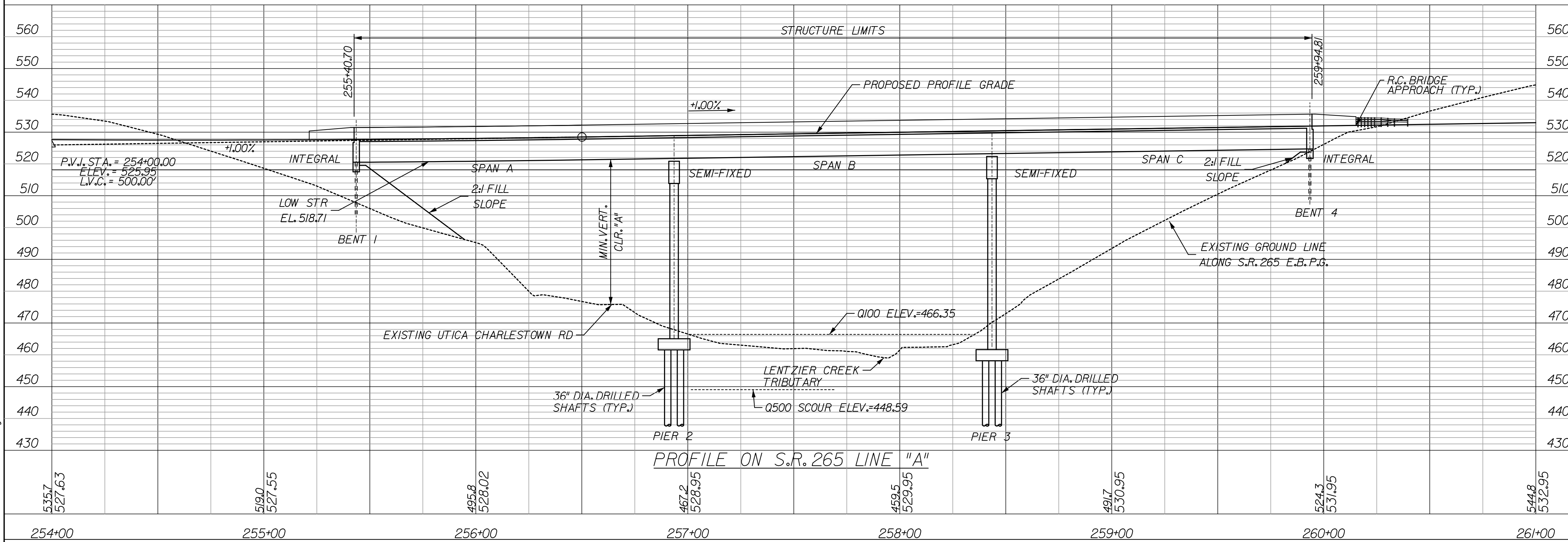
MINIMUM VERTICAL CLEARANCE

LOCATION	REQUIRED	PROVIDED
"A"	14'-6"	46' +/-

LAYOUT

CONTINUOUS, COMPOSITE
78" PRESTRESSED CONCRETE
BULB-TEE BEAM BRIDGE

3 SPANS AT 150', 150', 150'
SKEW: NONE
54'-4" CLEAR ROADWAY EB
ON S.R. 265 OVER UTICA CHARLESTOWN RD.
AND LENTZIER CREEK TRIBUTARY



PROFILE ON S.R. 265 LINE "A"

RECOMMENDED FOR APPROVAL _____ DESIGN ENGINEER DATE _____

DESIGNED: CY DRAWN: CEW

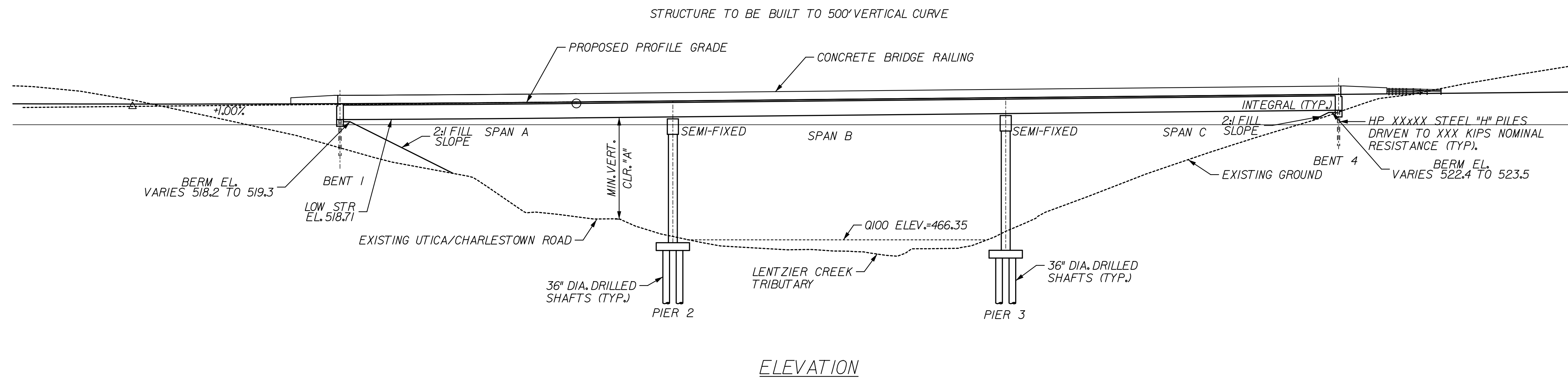
CHECKED: MJB CHECKED: PDO

INDIANA
DEPARTMENT OF TRANSPORTATION

LAYOUT
S.R. 265 EB BRIDGE

HORIZONTAL SCALE	BRIDGE FILE	
1"=30'	265-10-9600	
VERTICAL SCALE	DESIGNATION	
1"=20'	0900248	
SURVEY BOOK	DWG. NO.	SHEET NO.
	LY-01	8 of 12
CONTRACT	PROJECT	
	0810245	

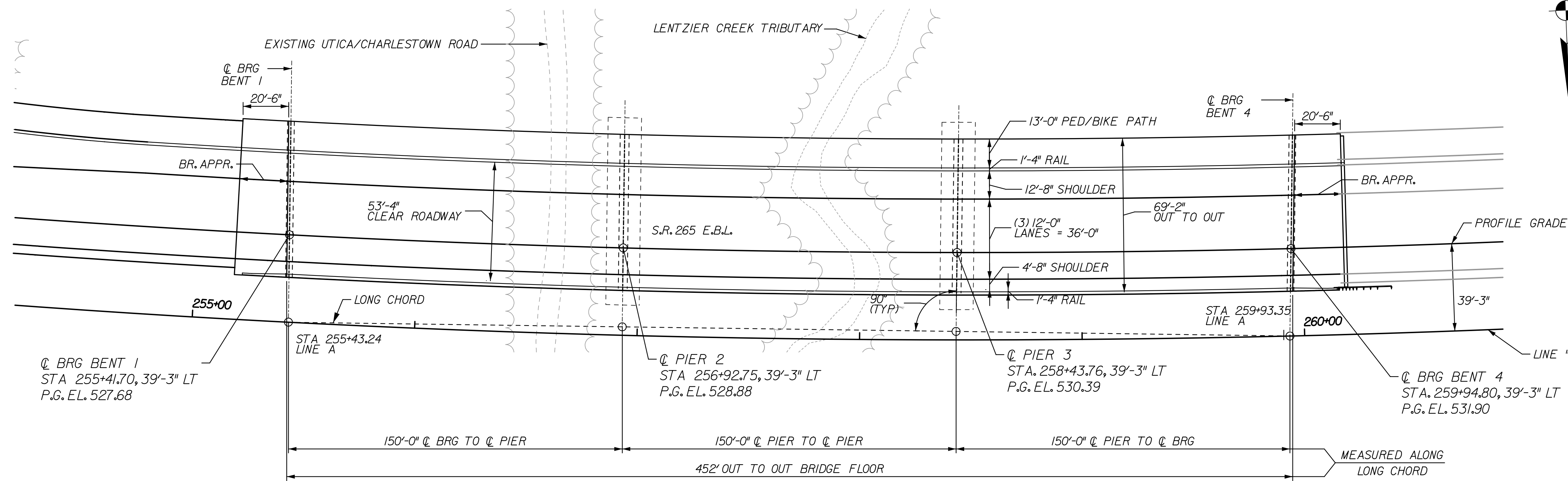
12/29/2011 6:38:13 PM
 C:\pwworkspace\borner_d\msb9522\001.dgn



ELEVATION

MINIMUM VERTICAL CLEARANCE

LOCATION	REQUIRED	PROVIDED
"A"	14'-6"	46' +/-



PLAN

NOTES

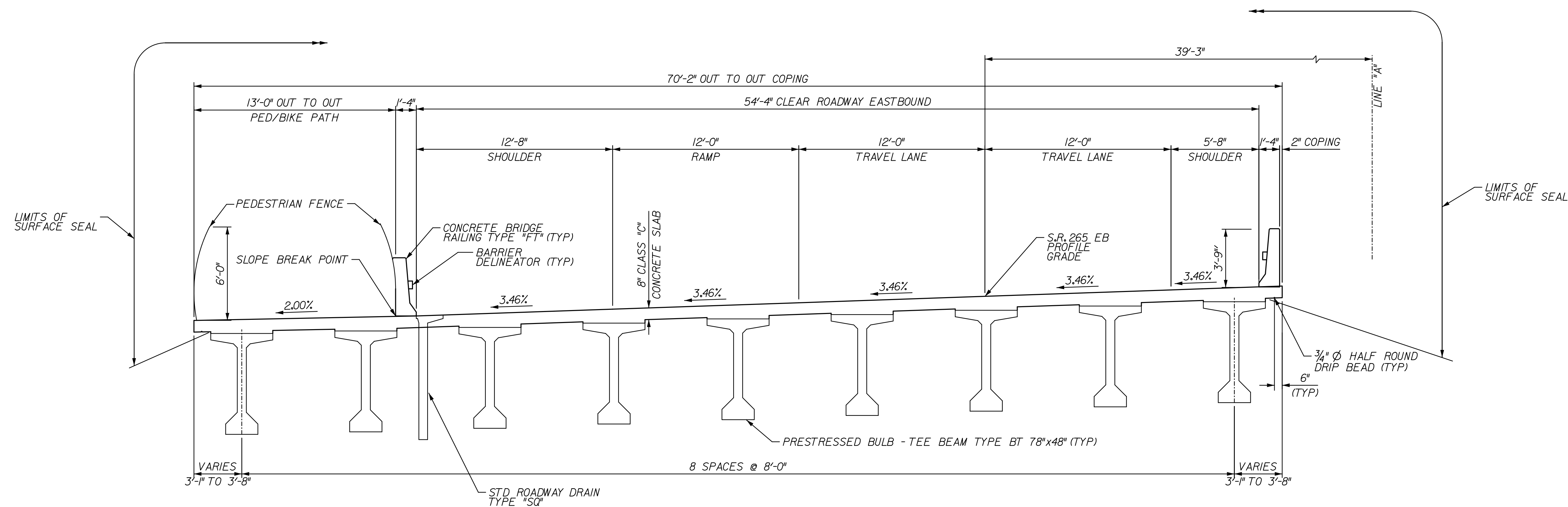
- FOUNDATION TYPE SHALL BE DETERMINED IN FINAL DESIGN
- FOR TYPICAL SECTION, SEE DWG. NO. GE-02
- CONTRACTOR SHALL CONSULT WITH INDOT TO DETERMINE THE NECESSARY SLOPE PROTECTION REQUIRED.

GENERAL PLAN
CONTINUOUS, COMPOSITE
78" PRESTRESSED CONCRETE
BULB-TEE BEAM BRIDGE

3 SPANS AT 150', 150', 150'
SKEW: NONE
54'-4" CLEAR ROADWAY EB
ON S.R. 265 OVER UTICA CHARLESTOWN RD.
AND LENTZIER CREEK TRIBUTARY

12/29/2011 6:30:37 PM
 c:\pwworking\indot\proj\lewis\workspace\brms\18952\p01.dgn

RECOMMENDED FOR APPROVAL _____ DESIGN ENGINEER DATE	INDIANA DEPARTMENT OF TRANSPORTATION	HORIZONTAL SCALE 1"=30' VERTICAL SCALE 1"=30' BRIDGE FILE 265-10-9600 DESIGNATION 0900248	SURVEY BOOK _____ DWG. NO. GE-01 SHEET NO. 9 of 12 CONTRACT _____ PROJECT 0810245
DESIGNED: CY DRAWN: CEW CHECKED: MBJ CHECKED: PDO	GENERAL PLAN S.R. 265 EB BRIDGE		



TYPICAL SECTION

EASTBOUND LANE S.R. 265
(LOOKING AHEAD STATION)

GENERAL NOTES

REINFORCING STEEL COVER TO BE 2.5" IN TOP AND 1" IN BOTTOM OF FLOOR SLAB, 3" IN FOOTING EXCEPT BOTTOM STEEL WHICH SHALL BE 4", AND 2" IN ALL OTHER PARTS UNLESS NOTED.

ALL THE EXPOSED FACES OF THE END BENT CAPS, THE PIERS AND THE BARRIERS SHALL BE SEALED IN ACCORDANCE WITH ARTICLE 702.21 OF THE SPECIFICATIONS.

DESIGN DATA

DESIGN STRENGTHS

BEAM CONCRETE $f'_c = 7000$ PSI
 CLASS A CONCRETE $f'_c = 3500$ PSI
 CLASS B CONCRETE $f'_c = 3000$ PSI
 CLASS C CONCRETE $f'_c = 4000$ PSI
 REINFORCING STEEL $f_y = 60,000$ PSI

LIVE LOAD

SUPERSTRUCTURE AND SUBSTRUCTURE DESIGNED FOR HL-93 LOADING, IN ACCORDANCE WITH THE AASHTO LRFD BRIDGE DESIGN SPECIFICATIONS, 5TH EDITION, 2010, AND SUBSEQUENT INTERIMS.

DEAD LOAD

FLOOR SLAB DESIGNED WITH 7 1/2" STRUCTURAL DEPTH AND 0.5" INTEGRAL WEARING SURFACE.

ACTUAL WEIGHT PLUS 35 PSF (COMPOSITE) FOR FUTURE WEARING SURFACE AND 15 PSF (NON-COMPOSITE) FOR PERMANENT METAL DECK FORMS.

CONSTRUCTION LOAD

THE EXTERIOR GIRDER HAS BEEN CHECKED FOR STRENGTH, DEFLECTION, AND OVERTURNING USING THE CONSTRUCTION LOADS SHOWN BELOW. CANTILEVER OVERHANG BRACKETS WERE ASSUMED FOR SUPPORT OF THE DECK OVERHANG PAST THE EDGE OF THE EXTERIOR GIRDER. THE FINISHING MACHINE WAS ASSUMED TO BE SUPPORTED 6 IN. OUTSIDE THE VERTICAL COPING FORM. THE TOP OVERHANG BRACKETS WERE ASSUMED TO BE LOCATED 6 IN. PAST THE EDGE OF THE VERTICAL COPING FORM. THE BOTTOM OVERHANG BRACKETS WERE ASSUMED TO BE BRACED AGAINST THE INTERSECTION OF THE GIRDER BOTTOM FLANGE AND WEB.

DECK FALSEWORK LOADS: DESIGNED FOR 15 LB/FT² FOR PERMANENT METAL STAY-IN-PLACE DECK FORMS, REMOVABLE DECK FORMS, AND 2-FT EXTERIOR WALKWAY.

CONSTRUCTION LIVE LOAD: DESIGNED FOR 20 LB/FT² EXTENDING 2 FT PAST THE EDGE OF COPING AND 75 LB/FT VERTICAL FORCE APPLIED AT A DISTANCE OF 6 IN. OUTSIDE THE FACE OF COPING OVER 30-FT LENGTH OF THE DECK CENTERED WITH THE FINISHING MACHINE.

FINISHING-MACHINE LOAD: 4500 LB DISTRIBUTED OVER 10 FT ALONG THE COPING.

WIND LOAD: DESIGNED FOR 70 MPH HORIZONTAL WIND LOADING OF 50 LB/FT² IN ACCORDANCE WITH AASHTO GUIDE DESIGN SPECIFICATION FOR BRIDGE TEMPORARY WORKS (1995), FIG 2J.

SEISMIC

SEISMIC =
 SI =
 SITE CLASS =
 FV =
 ZONE =

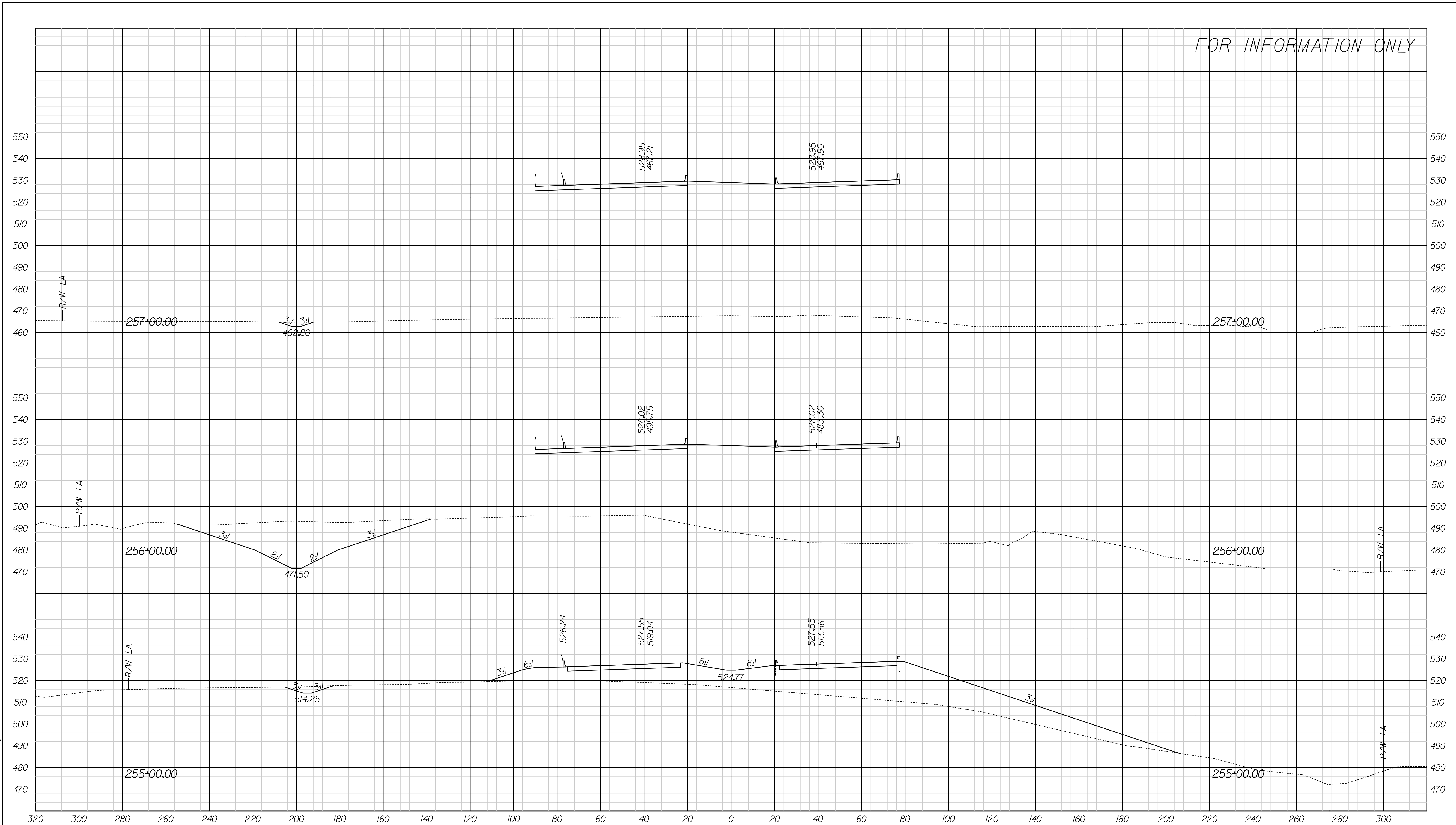
GENERAL PLAN
 CONTINUOUS, COMPOSITE
 78" PRESTRESSED CONCRETE
 BULB-TEE BEAM BRIDGE

3 SPANS AT 150', 150', 150'
 SKEW: NONE
 54'-4" CLEAR ROADWAY EB
 ON S.R. 265 OVER UTICA CHARLESTOWN RD.
 AND LENTZIER CREEK TRIBUTARY

12/29/2011 6:30:45 PM
 c:\pwworking\dotcom\dotcom\proj\lewis\workspace\brms\1895\229p002.dgn

RECOMMENDED FOR APPROVAL _____ DESIGN ENGINEER DATE		INDIANA DEPARTMENT OF TRANSPORTATION GENERAL PLAN S.R. 265 EB BRIDGE		HORIZONTAL SCALE 1/4" = 1'-0"	BRIDGE FILE 265-10-9600
DESIGNED: CYY	DRAWN: CEW			VERTICAL SCALE 1/4" = 1'-0"	DESIGNATION 0900248
CHECKED: MBJ	CHECKED: PDO			SURVEY BOOK	DWG. NO. SHEET NO. GE-02 10 of 12
				CONTRACT	PROJECT 0810245

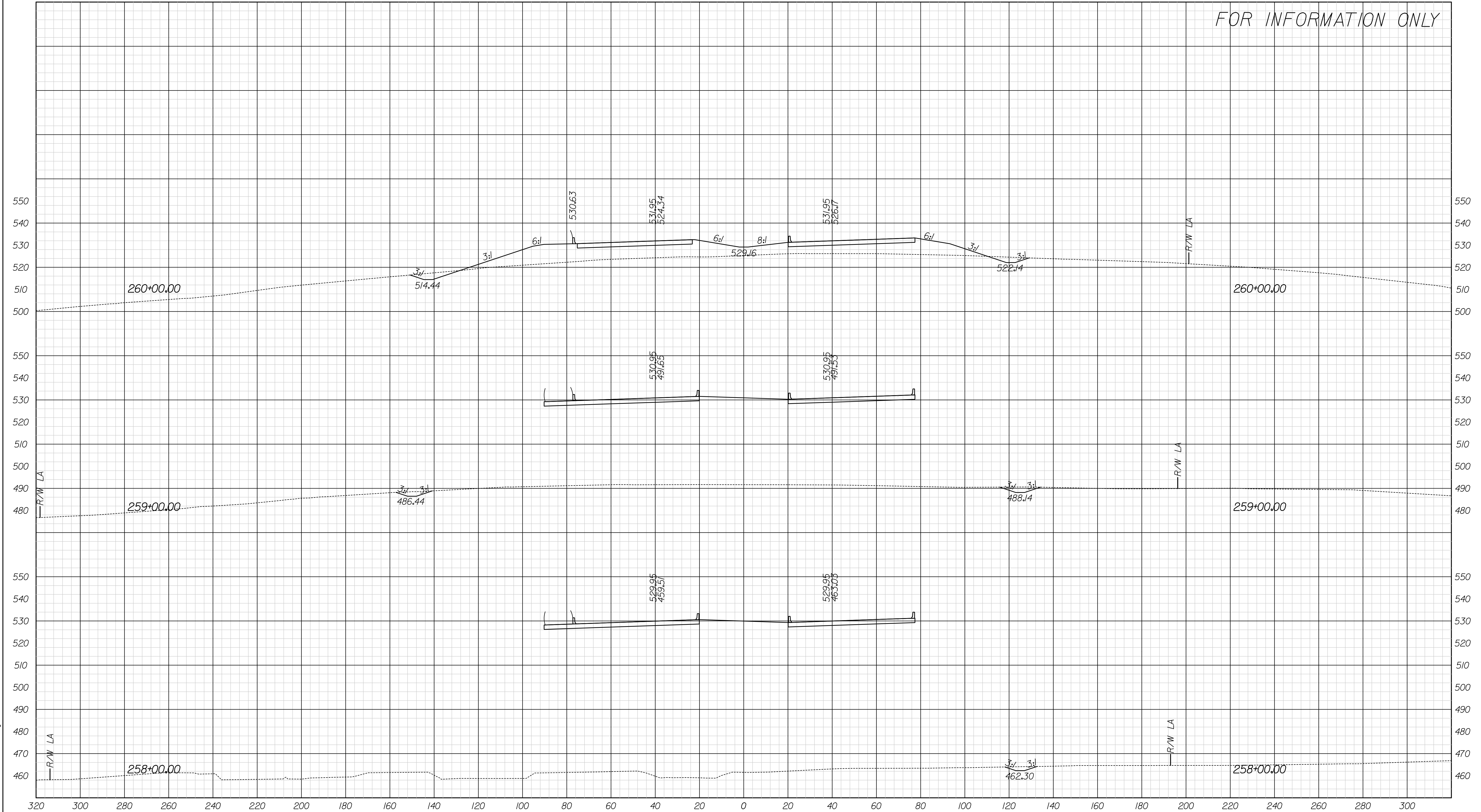
FOR INFORMATION ONLY



6:30:54 PM
 12/29/2011
 c:\pwworkspace\dotcom\proj\01\dotcom\msb\msb109522\rsLA001.dgn

RECOMMENDED FOR APPROVAL _____ DESIGN ENGINEER _____ DATE _____	INDIANA DEPARTMENT OF TRANSPORTATION		HORIZONTAL SCALE 1" = 20'	BRIDGE FILE		
			VERTICAL SCALE 1" = 20'	DESIGNATION 0810245		
DESIGNED: PDD	DRAWN: CEW	CROSS SECTIONS Line "A"		SURVEY BOOK	DWG. NO. XS-01	SHEET NO. 11 of 12
CHECKED: WWM	CHECKED: PDD	STA. 255+00.00 TO 257+00.00		CONTRACT	PROJECT 0810245	

FOR INFORMATION ONLY



6:30:56 PM
 12/29/2011
 c:\pwworking\pwworking\projects\2011\12292011\12292011.dgn

	RECOMMENDED FOR APPROVAL _____ DESIGN ENGINEER DATE	INDIANA DEPARTMENT OF TRANSPORTATION CROSS SECTIONS Line "A" STA. 258+00.00 TO 260+00.00	BRIDGE FILE DESIGNATION 0810245
DESIGNED: PDD	DRAWN: CEW		DWG. NO. XS-02
CHECKED: WWM	CHECKED: PDD		SHEET NO. 12 of 12
			PROJECT 0810245