

PROJECT	DESIGNATION
0810245	0900249
CONTRACT	

**INDIANA
DEPARTMENT OF
TRANSPORTATION**



STRUCTURE	TYPE	SPAN AND SKEW	OVER	STATION
295-10-9601	CONTINUOUS COMPOSITE PRESSTRESSED CONCRETE BULB TEE BEAM BRIDGE	3 SPAN: 150'-0", 150'-0", 150'-0", SKEW: NONE	UTICA CHARLESTOWN RD AND LENTZIER CREEK TRIBUTARY	CENTERLINE STR 257+68.34 "A"

BRIDGE PLANS

ROUTE: S.R. 265 WB OVER UTICA CHARLESTOWN RD AND LENTZIER CREEK TRIBUTARY R.P. 12+17

PROJECT NO. 0810245 P.E.

PROJECT NO. 0810245 R/W

PROJECT NO. 0810245 CONST.

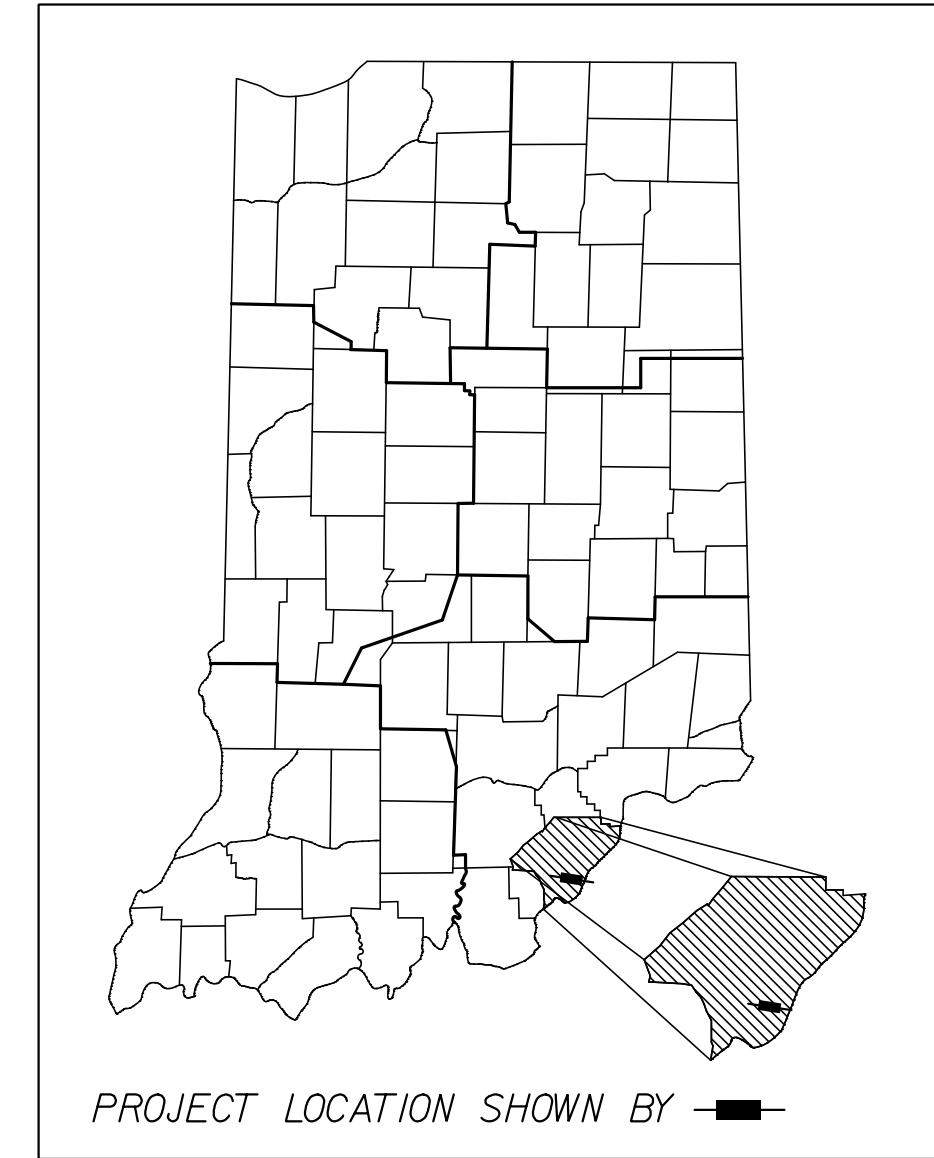
NOTE: FOR INDEX OF SHEET, NO.'S AND TRAFFIC DATA SEE DWG. NO. 1X-01.

STRUCTURE NO. 265-10-9601 IS A NEW BRIDGE ON THE PROPOSED S.R. 265 WB OVER UTICA CHARLESTOWN RD AND LENTZIER CREEK TRIBUTARY LOCATED APPROXIMATELY 2.5 MILES EAST OF THE S.R. 265 AND S.R. 62 INTERCHANGE IN ILLINOIS GRANT, SURVEY 17, UTICA TOWNSHIP, CLARK COUNTY, INDIANA

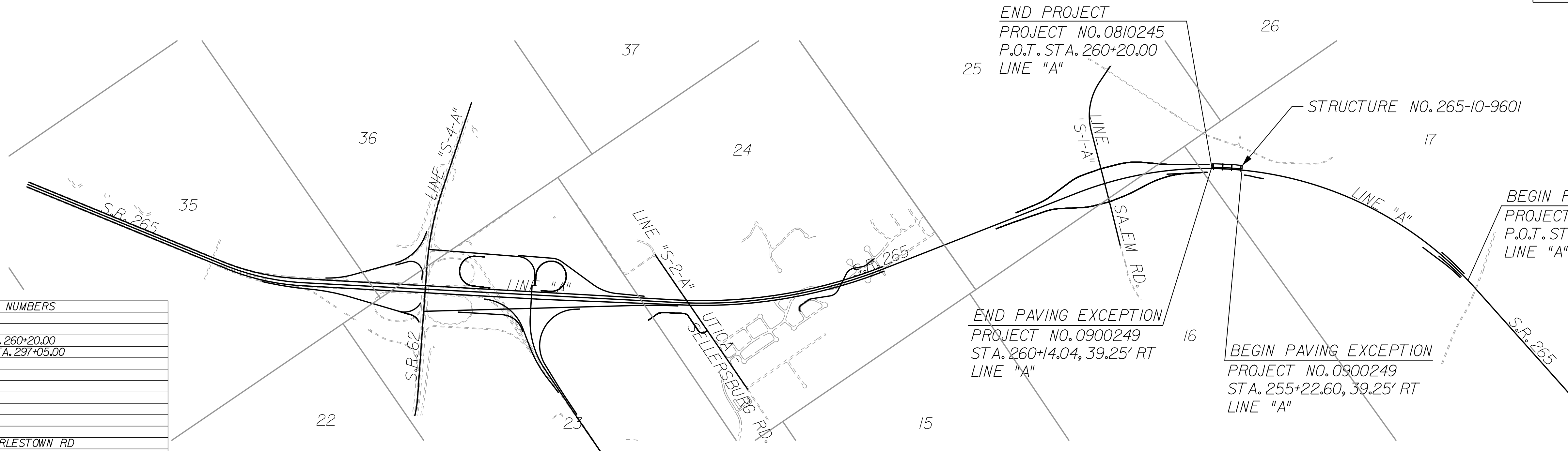
LATITUDE: 38°21'01" N

LONGITUDE: 85°39'36" W

HYDROLOGIC UNIT CODE: 05140101

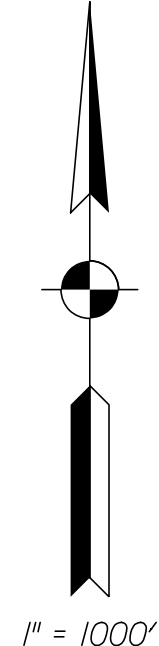


BRIDGE LENGTH: 0.085 mi.
ROAD LENGTH: 0.813 mi.
TOTAL LENGTH: 0.898 mi.
MAXIMUM GRADE: 2.20%



KIN DESIGNATION NUMBERS	
ROAD PLANS	
0810245	S.R. 265 STA. 212+74.51 TO STA. 260+20.00
0810242	S.R. 265 STA. 260+20.00 TO STA. 297+05.00
BRIDGE PLANS	
0900249	S.R. 265 EB OVER UTICA CHARLESTOWN RD

LOCATION MAP
CLARK COUNTY, INDIANA



NOTE: CONTRACTOR SHALL USE THESE PLANS IN CONJUNCTION WITH ROAD PLANS DES. NO. 0810245

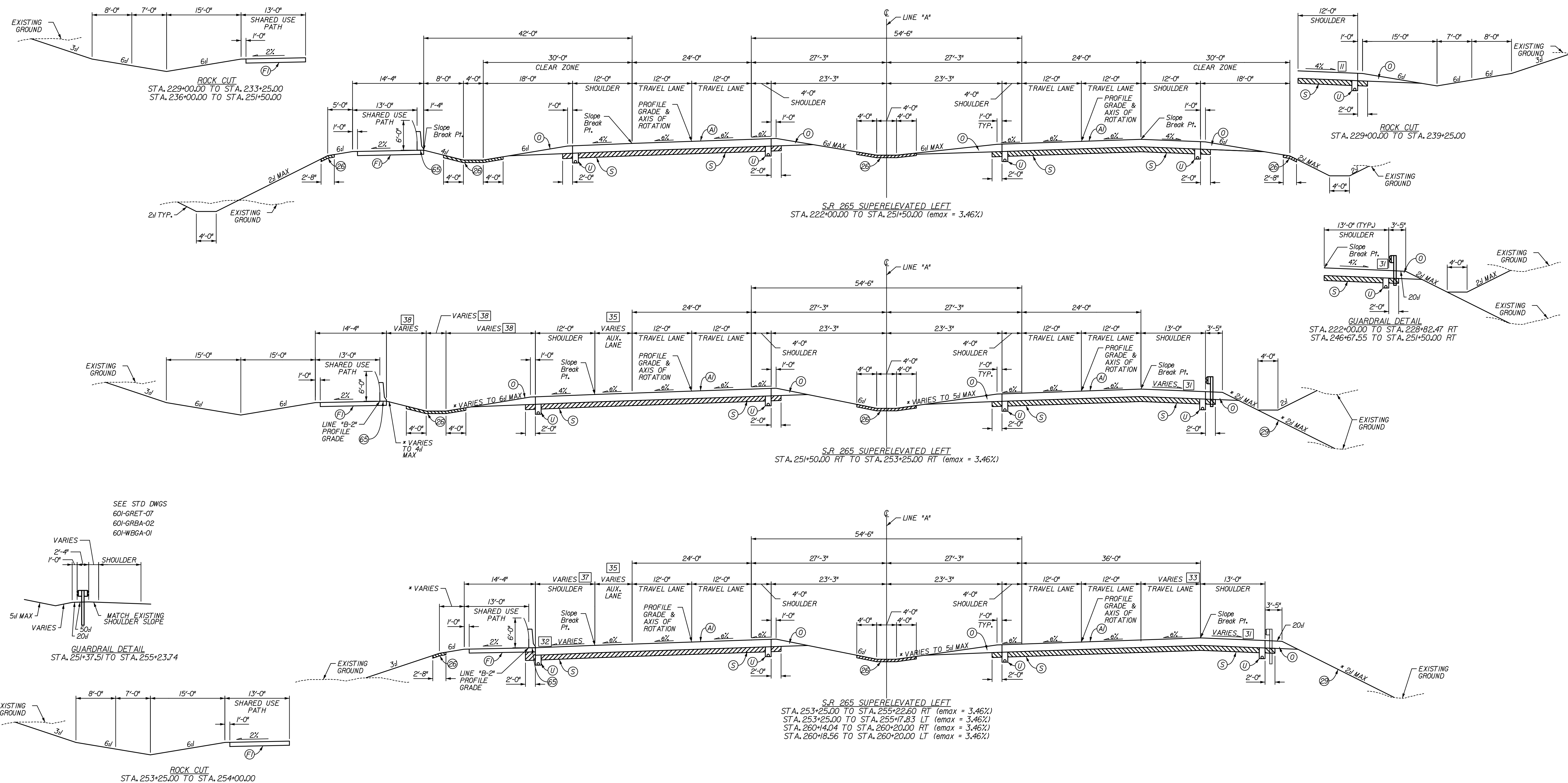
FINAL
DECEMBER 30, 2011

(INDIANA DEPARTMENT OF TRANSPORTATION
STANDARD SPECIFICATIONS DATED 2012
TO BE USED WITH THESE PLANS)

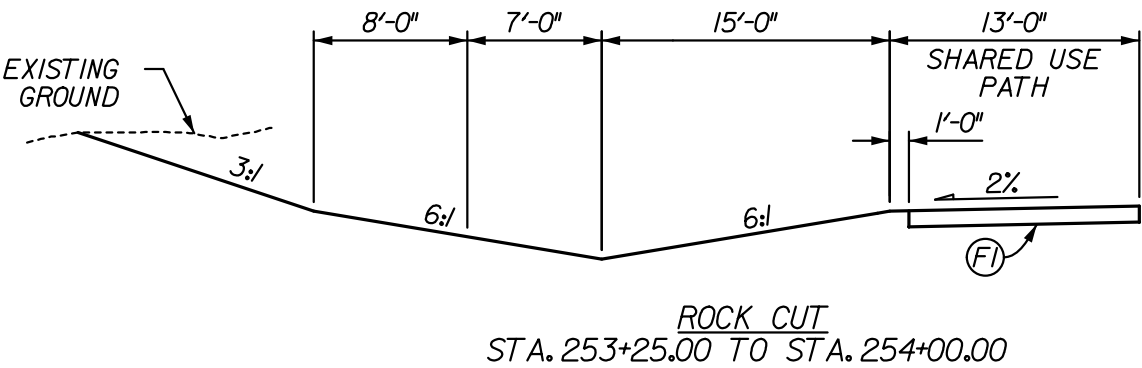
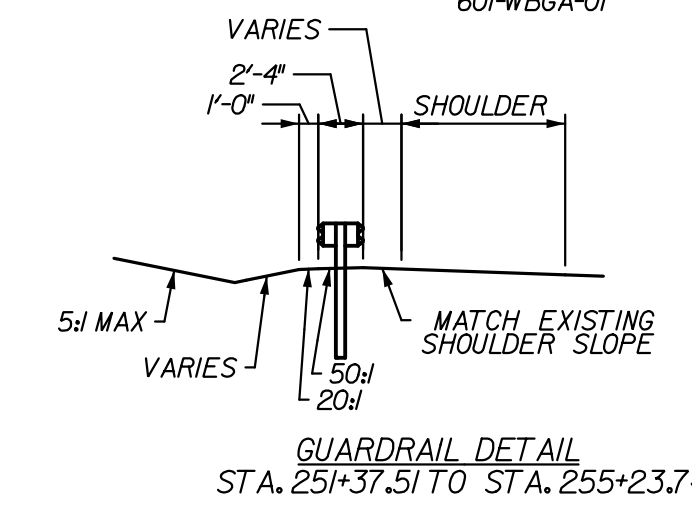
Baker
MICHAEL BAKER JR., INC.
9750 ORMSBY STATION ROAD, SUITE 210
LOUISVILLE, KY 40223
PHONE (502) 339-3557
FAX (502) 339-4486

FEDERAL HIGHWAY ADMINISTRATION U.S. DEPT. OF TRANSPORTATION APPROVED: _____ DATE _____ DIVISION ADMINISTRATOR	PLANS PREPARED BY: _____ PHONE NO. _____ CERTIFIED BY: _____ DATE _____ APPROVED FOR LETTING: _____ DATE _____ INDIANA DEPARTMENT OF TRANSPORTATION	BRIDGE FILE 265-10-9601 DESIGNATION 0900249 DWG. NO. T1-01 SHEET NO. 1 of 12 PROJECT 0810245
---	--	--

6/22/24 PM 12/29/2011 c:\pwworking\michael_baker_jr\projects\0810245\0900249\0900249.dwg



SEE STD DWGS
601-GRET-07
601-GRBA-02
601-WBGA-01



- [31] 4.00%
STA. 251+50.00 TO STA. 252+53.00
4.00% TO 0.00%
STA. 252+53.00 TO STA. 253+71.02
0.00% TO -3.46%
STA. 253+71.02 TO STA. 254+73.00
-3.46%
STA. 254+73.00 TO STA. 255+22.60
STA. 260+14.04 TO STA. 260+20.00
- [32] -4.00%
STA. 253+25.00 TO STA. 254+56.76
-4.00% TO -3.46%
STA. 254+56.76 TO STA. 254+73.00
-3.46%
STA. 254+73.00 TO STA. 255+17.83
STA. 260+18.56 TO STA. 260+20.00
- [33] 0'-0"
STA. 253+25.00 TO STA. 253+75.00
0'-0" TO 12'-0"
STA. 253+75.00 TO STA. 254+75.00
12'-0"
STA. 254+75.00 TO STA. 255+22.60
STA. 260+14.04 TO STA. 260+20.00
- [35] 0'-0"
STA. 251+50.00 TO STA. 251+75.00
0'-0" TO 12'-0"
STA. 251+75.00 TO STA. 254+75.00
12'-0"
STA. 254+75.00 TO STA. 255+17.83
STA. 260+18.56 TO STA. 260+20.00
- [37] 12'-0"
STA. 253+25.00
25'-10 1/8" TO 12'-8"
STA. 253+25.00 TO STA. 254+75.00
12'-8"
STA. 254+75.00 TO STA. 255+17.83
STA. 260+18.56 TO STA. 260+20.00
- [38] WIDTH TO BE DETERMINED AT STAGE 2

FOR INFORMATION ONLY

LEGEND

- (A) XX' OC/OA PAVEMENT (TO BE DETERMINED)
- (D) VARIABLE DEPTH COMPACTED AGGREGATE, NO. 53
- (S) SUBGRADE TREATMENT, TYPE XX
- (U) 6" UNDERDRAIN
- (26) SODDING, NURSERY
- (29) SEEDING, R
- (65) CONCRETE BARRIER, 45", SINGLE FACE
- (F) HMA PAVEMENT FOR PATH (TO BE DETERMINED)

RECOMMENDED FOR APPROVAL _____
DESIGN ENGINEER DATE

DESIGNED: CY DRAWN: CEW

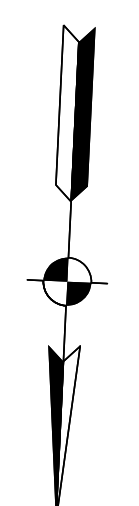
CHECKED: MBJ CHECKED: PDO

INDIANA
DEPARTMENT OF TRANSPORTATION

TYPICAL CROSS SECTIONS
LINE "A"

HORIZONTAL SCALE 1" = 10'	BRIDGE FILE 265-10-9601
VERTICAL SCALE	DESIGNATION 0900249
SURVEY BOOK	DWG. NO. TS-01
	SHEET NO. 3 of 12
CONTRACT	PROJECT 0810245

12/29/2011 6:42:37 PM
 C:\pwworking\indot\proj\lewis\workspace\brn\dwgs\3624\210249.dwg



MATCHLINE 241+00.00 SEE DWG. GLP-01

MATCHLINE 106+25.00 "SER" SEE DWG. GLP-03
 MATCHLINE 272+00.00 "A" SEE DWG. GLP-03
 MATCHLINE 86+24.06 "NER" SEE DWG. GLP-03

B2-1

CURVE DATA
 PI 851+62.30
 N 112,516.68
 E 36,685.71
 Delta 0° 14' 29.19" (LT)
 D 0° 58' 53.10"
 R 5,838.07
 Lc 24.60
 T 12.30
 E 0.01'
 SE = N/A
 D.S. = N/A

B2-2

CURVE DATA
 PI 852+52.23
 N 112,530.52
 E 36,596.86
 Delta 5° 11' 30.31" (RT)
 D 3° 20' 47.04"
 R 1,712.16
 Lc 155.14
 T 77.63
 E 1.76'
 SE = N/A
 D.S. = N/A

B2-3

CURVE DATA
 PI 854+00.45
 N 112,566.53
 E 36,452.96
 Delta 8° 05' 20.63" (LT)
 D 5° 43' 46.48"
 R 1,000.00
 Lc 141.8
 T 70.71
 E 2.50'
 SE = N/A
 D.S. = N/A

P.C. STA. 851+50.00 "B2"
 P.O.C. STA. 251+50.00 "A"
 94.58' LT.
 N:112514.73
 E:36697.86

P.R.C. STA. 851+74.60 "B2"
 P.O.C. STA. 251+75.00 "A"
 94.58' LT.
 N:112518.57
 E:36673.56

P.C.C. STA. 853+29.75 "B2"
 P.O.C. STA. 253+32.22 "A"
 85.51' LT.
 N:112549.37
 E:36521.55

P.T. STA. 854+70.93 "B2"
 P.O.C. STA. 254+75.00 "A"
 77.25' LT.
 N:112573.87
 E:36382.64

P.T. STA. 117+09.26 "SER"
 P.O.C. STA. 260+99.73 "A"
 63.25' LT.
 N:112619.52
 E:35767.12

P.T. STA. 114+12.32 "SER"
 N:112605.64
 E:35470.50

P.C. STA. 106+93.14 "SER"
 N:112418.96
 E:34781.85

P.I. STA. 110+58.53 "SER"
 N:112588.55
 E:35105.51

P.I. STA. 852+52.23 "B2"
 N:112530.52
 E:36596.86

P.I. STA. 854+00.45 "B2"
 N:112566.53
 E:36452.96

END PROJECT
 P.O.C. STA. 260+20.00 "A"
 DES. NO. 0810245
 N:112682.30
 E:35846.77

P.O.T. STA. 75+00.00 "NER"
 P.O.C. STA. 260+69.36 "A"
 63.25' RT.
 N:112745.98
 E:35797.65

P.C. STA. 80+58.24 "NER"
 N:112748.13
 E:35239.41

P.C. STA. 86+01.11 "NER"
 N:112783.26
 E:35107.91

P.I. STA. 81+89.75 "NER"
 N:112748.64
 E:35107.91

LA-1

CURVE DATA
 PI 252+23.81
 N 113,781.36
 E 37,453.65
 Delta 69° 41' 37.79" (LT)
 D 0° 57' 56.77"
 R 5,932.65
 Lc 7,216.40
 T 4,130.51
 E 1,296.28'
 SE 3.46%
 D.S. 70 MPH

SER-2

CURVE DATA
 PI 110+58.53
 N 112,588.55
 E 35,105.51
 Delta 24° 58' 23.70" (RT)
 D 3° 28' 20.90"
 R 1,650.00
 Lc 719.18
 T 365.39
 E 39.97'
 S.E. 6.6%
 D.S. 55 MPH

NER-1

CURVE DATA
 PI 81+89.75
 N 112,748.64
 E 35,107.91
 Delta 4° 36' 21.54" (RT)
 D 1° 45' 07.79"
 R 3,270.00
 Lc 262.87
 T 131.51
 E 2.64'
 SE 4.0%
 D.S. 55 MPH

P.I. STA. 252+23.81 "A"
 N:113781.36
 E:37453.65

FOR INFORMATION ONLY

RECOMMENDED FOR APPROVAL _____ DESIGN ENGINEER DATE		INDIANA DEPARTMENT OF TRANSPORTATION		HORIZONTAL SCALE 1" = 100'		BRIDGE FILE 265-10-9601	
DESIGNED: CY	DRAWN: CEW	PROPOSED GEOMETRIC LAYOUT SHEET		VERTICAL SCALE		DESIGNATION 0900249	
CHECKED: MBJ	CHECKED: PDO			SURVEY BOOK		DWG. NO. GLP-01	SHEET NO. 4 of 12
				CONTRACT		PROJECT 0810245	

12/29/2011 6:22:47 PM
 C:\pwworkspace\dotcom\proj\0810245\0810245.dwg

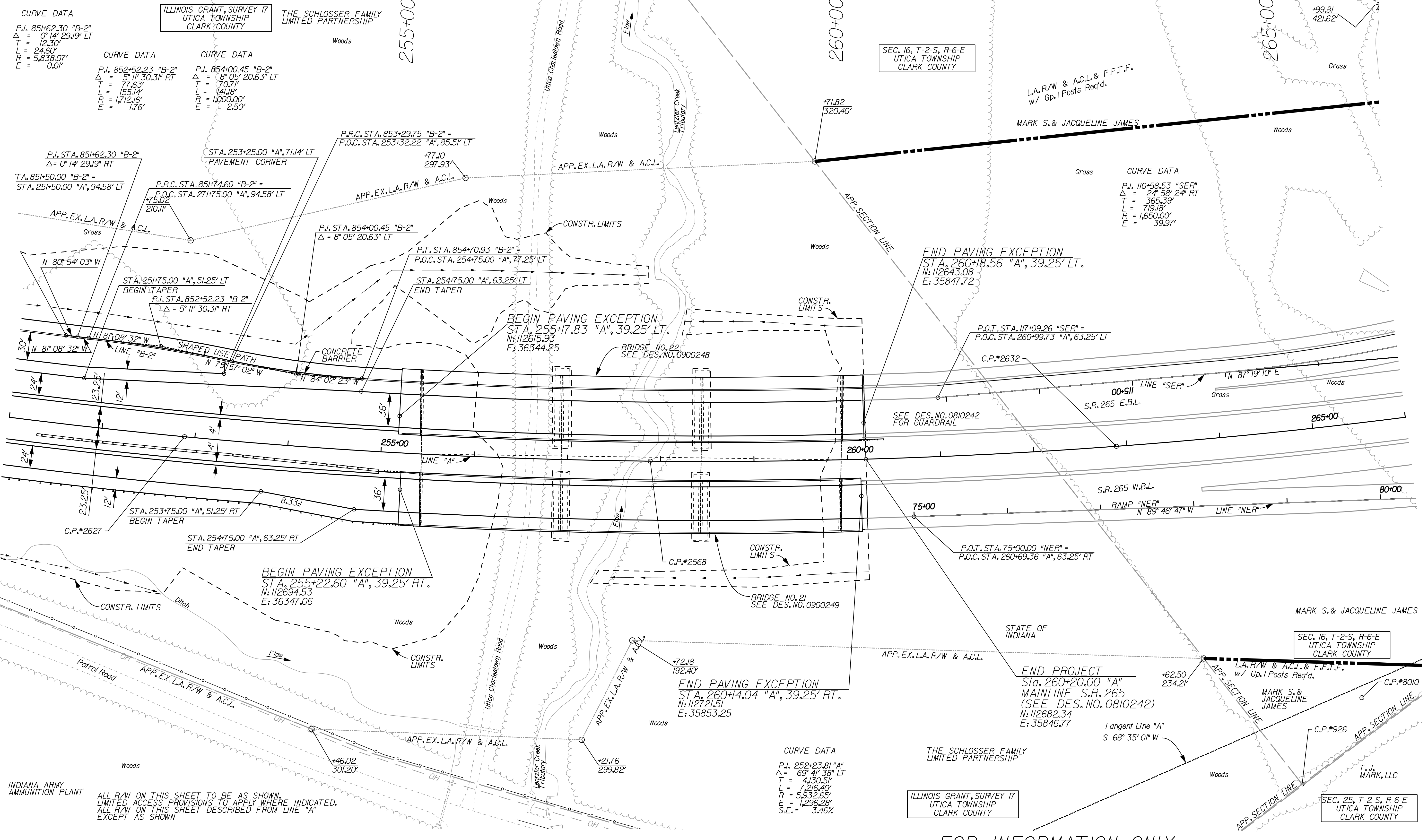
CURVE DATA
 P.J. 851+62.30 "B-2"
 $\Delta = 0^\circ 14' 29.19''$ RT
 T = 12.30'
 L = 24.60'
 R = 5,838.07'
 E = 0.01'

CURVE DATA
 P.J. 852+52.23 "B-2"
 $\Delta = 5^\circ 11' 30.31''$ RT
 T = 77.63'
 L = 155.14'
 R = 1,712.16'
 E = 1.76'

CURVE DATA
 P.J. 854+00.45 "B-2"
 $\Delta = 8^\circ 05' 20.63''$ LT
 T = 70.71'
 L = 141.88'
 R = 1,000.00'
 E = 2.50'

CURVE DATA
 P.J. 110+58.53 "SER"
 $\Delta = 24^\circ 58' 24''$ RT
 T = 365.39'
 L = 719.18'
 R = 1,650.00'
 E = 39.97'

CURVE DATA
 P.J. 252+23.81 "A"
 $\Delta = 69^\circ 41' 38''$ LT
 T = 41.30.51'
 L = 7.216.40'
 R = 5,932.65'
 E = 1,296.28'
 S.E. = 3.46%



INDIANA ARMY AMMUNITION PLANT
 ALL R/W ON THIS SHEET TO BE AS SHOWN.
 LIMITED ACCESS PROVISIONS TO APPLY WHERE INDICATED.
 ALL R/W ON THIS SHEET DESCRIBED FROM LINE "A"
 EXCEPT AS SHOWN

FOR INFORMATION ONLY

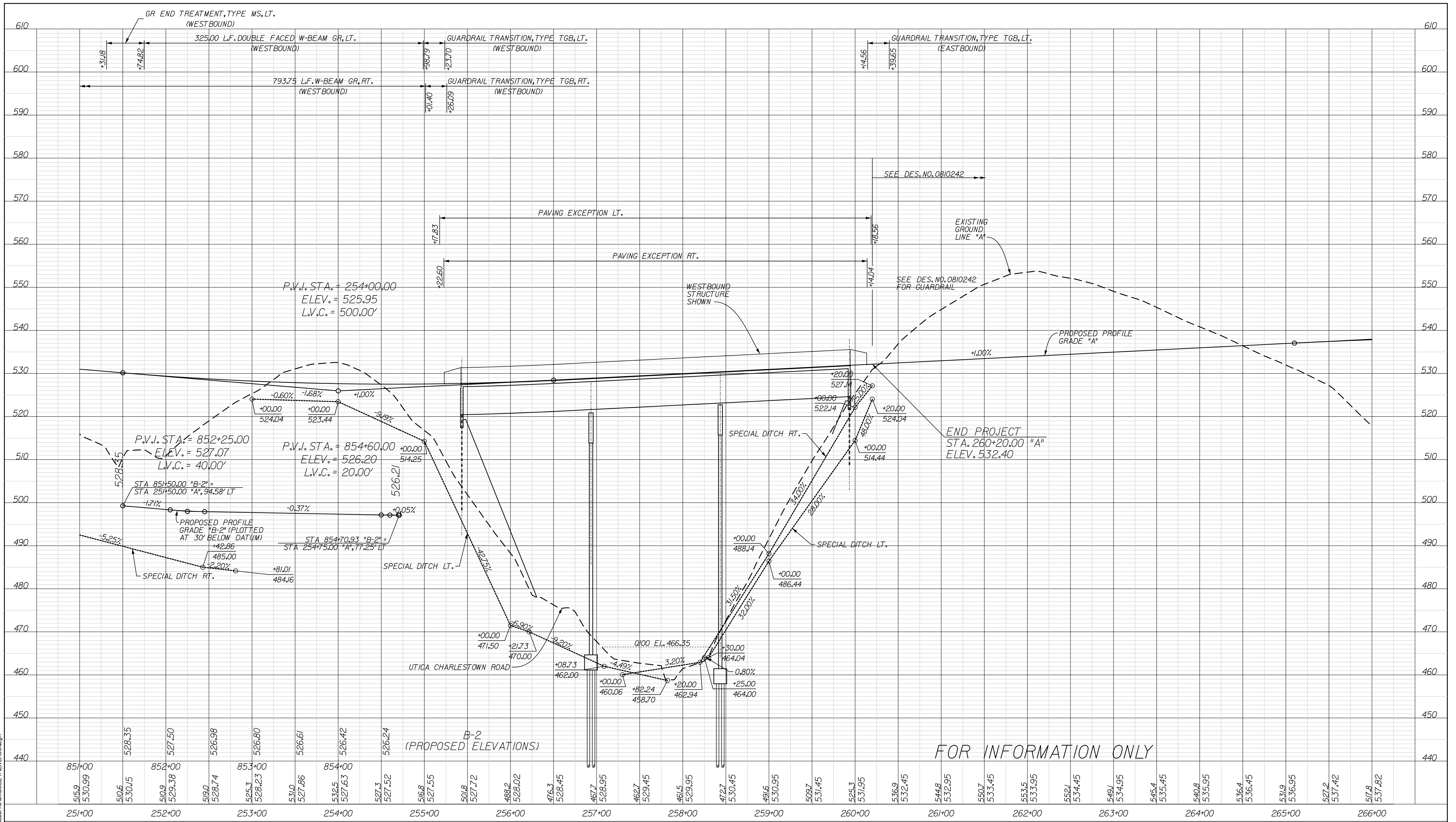
R/W LEGEND	
[B]	BEGIN L.A. R/W
[E]	END L.A. R/W

RECOMMENDED FOR APPROVAL	DESIGN ENGINEER	DATE
DESIGNED: CY	DRAWN: CEW	
CHECKED: MJB	CHECKED: PDD	

INDIANA DEPARTMENT OF TRANSPORTATION
 PLAN SHEET
 LINE "A"
 STA. 251+00 TO STA. 266+00

HORIZONTAL SCALE 1" = 50'	BRIDGE FILE 265-10-9601
VERTICAL SCALE	DESIGNATION 0900249
SURVEY BOOK	DWG. NO. PN-01
	SHEET NO. 5 of 12
CONTRACT	PROJECT 0810245

12/29/2011 6:22:57 PM
 C:\pwworking\dotcom\dotcom\proj\lewis\workspace\mtdms\3624\21\mtd01.dgn

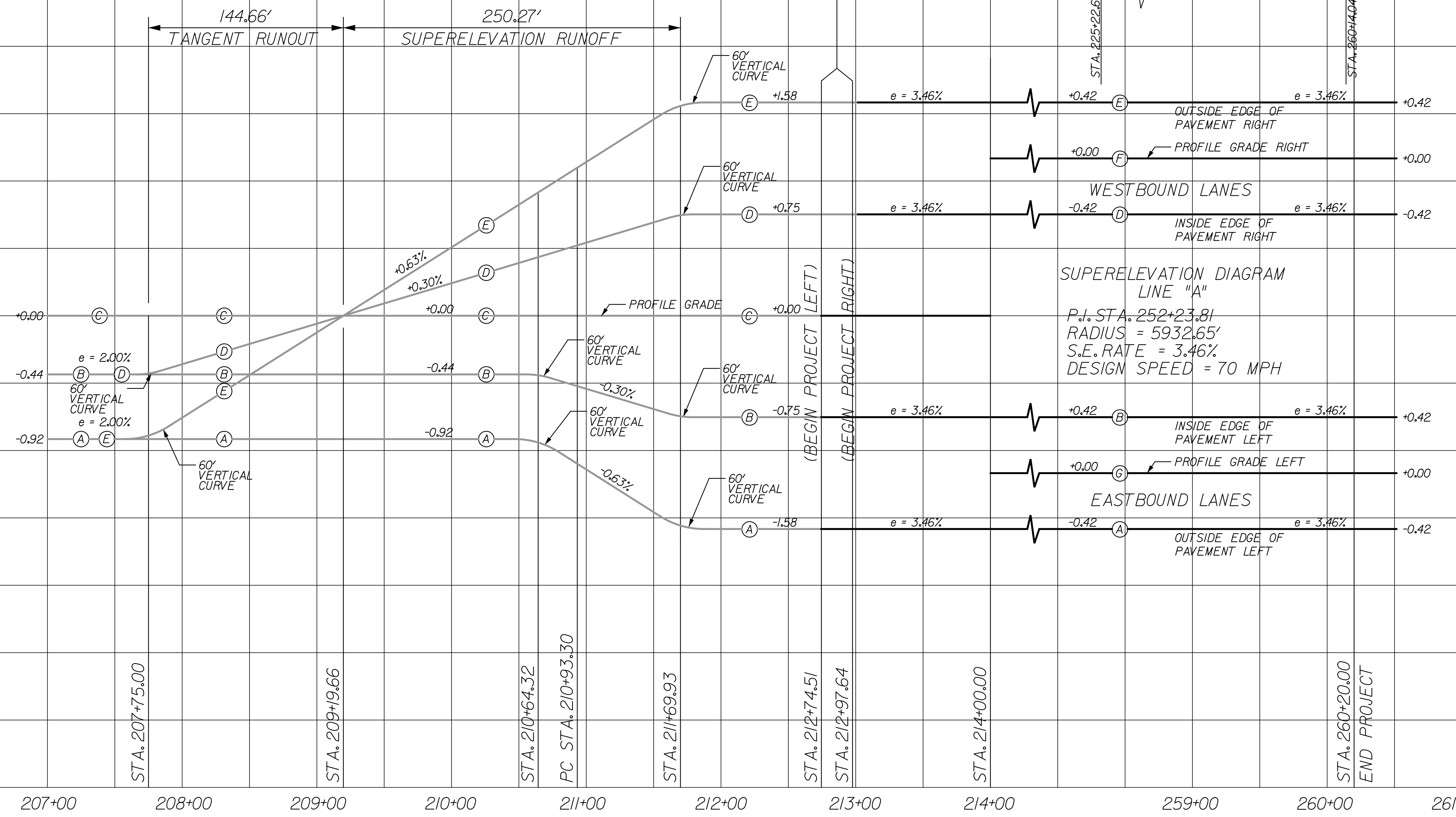


12/29/2011 6:23:07 PM
 C:\pwworking\indiana DOT\projects\0810245\0810245.dwg

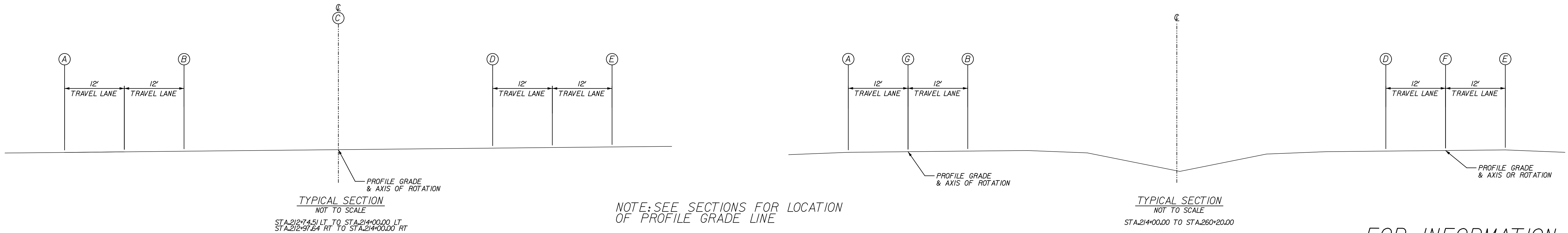
RECOMMENDED FOR APPROVAL _____ DESIGN ENGINEER DATE		INDIANA DEPARTMENT OF TRANSPORTATION PROFILE SHEET STA. 251+00 TO STA. 266+00 LINE "A"	HORIZONTAL SCALE 1" = 50'		BRIDGE FILE 265-10-9601	
DESIGNED: CYY DRAWN: CEW			VERTICAL SCALE 1" = 10'		DESIGNATION 0900249	
CHECKED: MJB CHECKED: PDD		SURVEY BOOK		DWG. NO. V-01	SHEET NO. 6 of 12	
		CONTRACT		PROJECT 0810245		

SEE EAST END BRIDGE PROJECT (SECTION 5)

SEE DESIGN NO. 0810242



SUPERELEVATION DIAGRAM
LINE "A"
P.I. STA. 252+23.81
RADIUS = 5932.65'
S.E. RATE = 3.46%
DESIGN SPEED = 70 MPH



TYPICAL SECTION
NOT TO SCALE
STA. 212+74.51 LT. TO STA. 214+00.00 LT.
STA. 212+97.64 RT. TO STA. 214+00.00 RT.

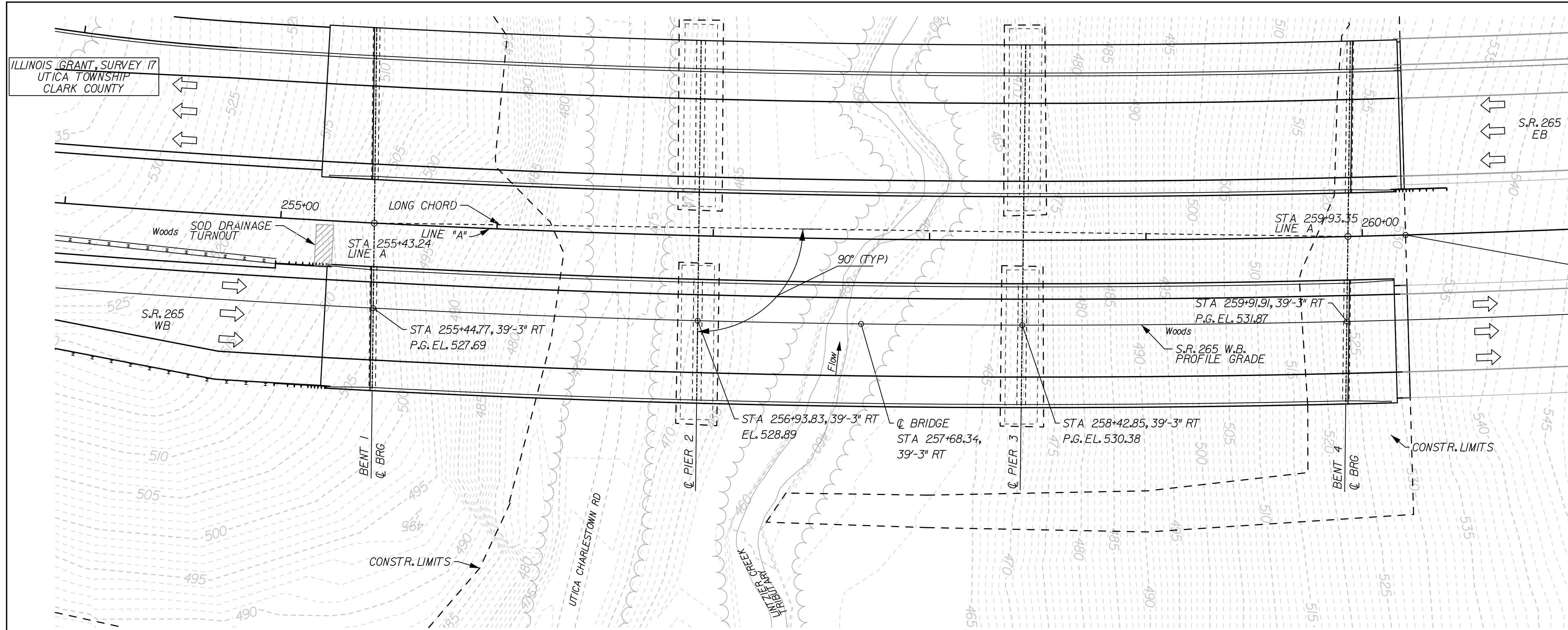
NOTE: SEE SECTIONS FOR LOCATION
OF PROFILE GRADE LINE

TYPICAL SECTION
NOT TO SCALE
STA. 214+00.00 TO STA. 260+20.00

FOR INFORMATION ONLY

12/29/2011 6:23:13 PM
 C:\pwworkspace\louis.voxaborn\dwg\0810242\0810242.dwg

RECOMMENDED FOR APPROVAL _____ DESIGN ENGINEER DATE	INDIANA DEPARTMENT OF TRANSPORTATION		HORIZONTAL SCALE 1" = 50'	BRIDGE FILE 265-10-9601	
	DESIGNED: CYY DRAWN: CEW	SUPERELEVATION DIAGRAM		VERTICAL SCALE 1" = 0.5'	DESIGNATION 0900249
	CHECKED: MBJ CHECKED: PDO			SURVEY BOOK	DWG. NO. SE-01
				CONTRACT	PROJECT 0810245



SITUATION PLAN
CONTOUR INTERVAL = 1'

EXISTING STRUCTURE

NO PRESENT STRUCTURE

UTILITIES

SEE INDEX SHEET, SEE SHEET 2

HORIZONTAL CURVE DATA

CURVE DATA
S.R. 265
P.I. 252+23.81 "A"
 $\Delta = 69^\circ 41' 38''$ LT
 $T = 4130.51'$
 $L = 7216.40'$
 $R = 5932.65'$
 $E = 1296.28'$
 $S.E. = 3.46\%$

END PROJECT
Sta. 260+20.00 "A"
MAINLINE S.R. 265
(SEE DES. NO. 0810242)
N: 112682.34
E: 35846.77

HYDRAULIC DATA TABLE		
ITEM	UNIT	PROPOSED STRUCTURE
Drainage Area	sq mi	1.01
Q100 Discharge	cfs	1600
Q100 Elevation	ft	466.35
Q100 Backwater	ft	0.08
Q100 Velocity	ft/sec	2.89
Waterway Area Through Structure	sq ft	569.89
Minimum Low Structure Elevation	ft	524.5
Discharge Through Bridge	cfs	1600
Discharge Over Road	cfs	0
Roadway Overflow Area	sq ft	0
Q500 Scour Elevation		448.59

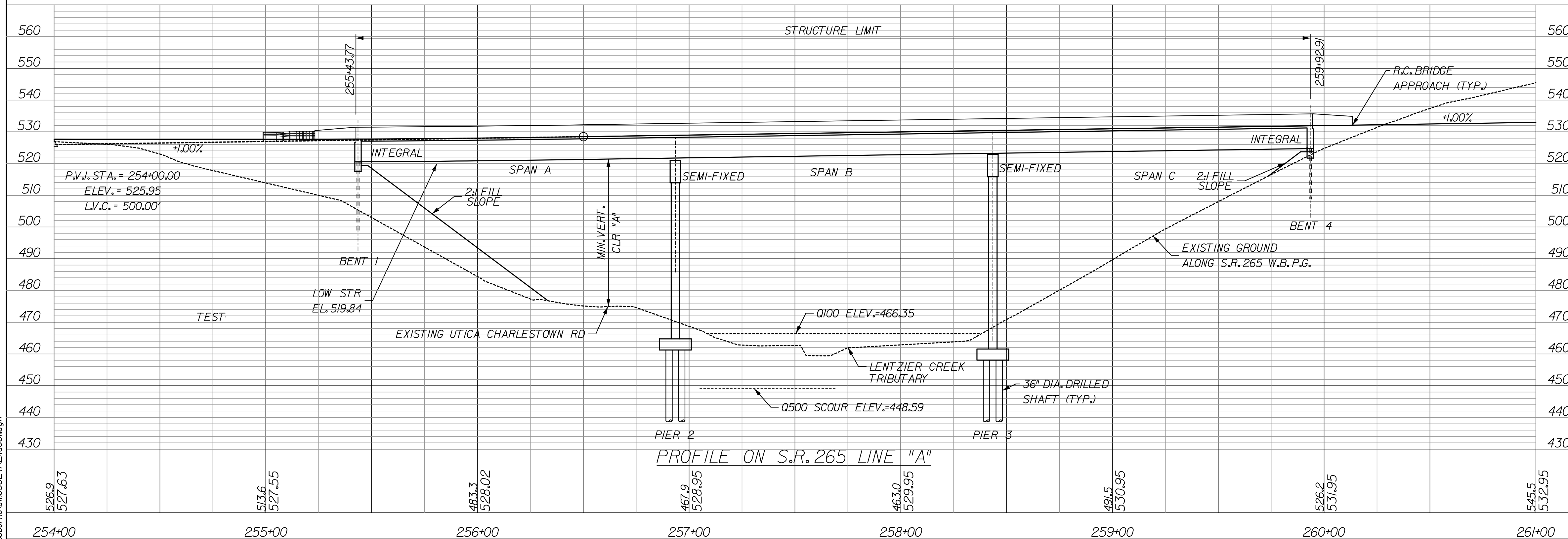
MINIMUM VERTICAL CLEARANCE

LOCATION	REQUIRED	PROVIDED
"A"	14'-6"	46' +/-

LAYOUT

CONTINUOUS, COMPOSITE
78" PRESTRESSED CONCRETE
BULB-TEE BEAM BRIDGE

3 SPANS AT 150', 150' & 150'
SKEW: NONE
54'-4" CLEAR ROADWAY WB
ON S.R. 265 OVER UTICA CHARLESTOWN RD.
AND LENTZIER CREEK TRIBUTARY



PROFILE ON S.R. 265 LINE "A"

RECOMMENDED FOR APPROVAL _____
DESIGN ENGINEER DATE

DESIGNED: CY DRAWN: CEW

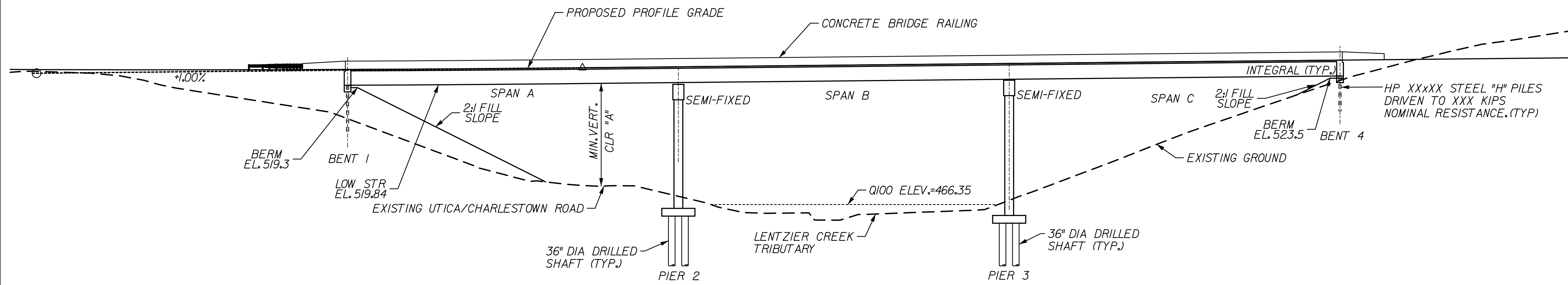
CHECKED: MJB CHECKED: PDO

INDIANA
DEPARTMENT OF TRANSPORTATION

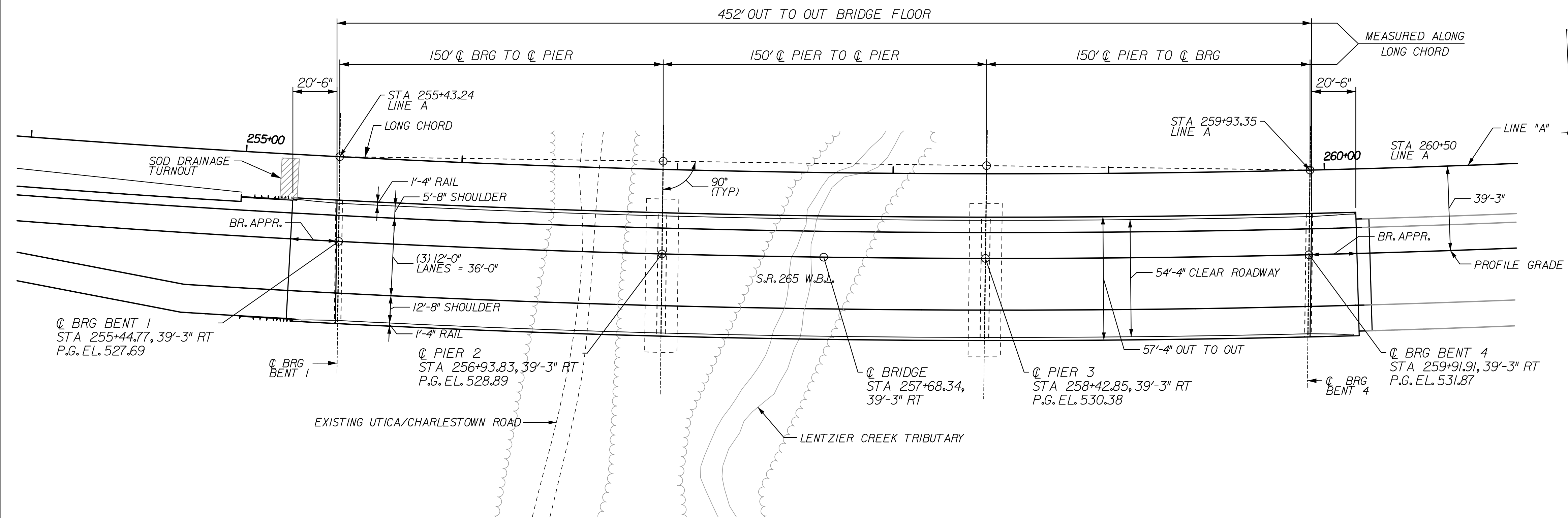
LAYOUT
S.R. 265 WB BRIDGE

HORIZONTAL SCALE		BRIDGE FILE	
1"=30'		265-10-9601	
VERTICAL SCALE		DESIGNATION	
1"=20'		0900249	
SURVEY BOOK		DWG. NO.	SHEET NO.
		LY-01	8 of 12
CONTRACT		PROJECT	
		0810245	

STRUCTURE TO BE BUILT TO A 500' VERTICAL CURVE.



ELEVATION



PLAN

MINIMUM VERTICAL CLEARANCE

LOCATION	REQUIRED	PROVIDED
"A"	14'-6"	46' +/-

NOTES

1. FOUNDATION TYPE SHALL BE DETERMINED IN FINAL DESIGN.
2. FOR TYPICAL SECTION, SEE DWG. NO. GE-02.
3. CONTRACTOR SHOULD CONSULT WITH INDOT TO DETERMINE THE NECESSARY SLOPE PROTECTION REQUIRED.

GENERAL PLAN
CONTINUOUS, COMPOSITE
78" PRESTRESSED CONCRETE
BULB-TEE BEAM BRIDGE

3 SPANS AT 150', 150', & 150'
SKEW: NONE
54'-4" CLEAR ROADWAY WB
ON S.R. 265 OVER UTICA CHARLESTOWN RD.
AND LENTZIER CREEK TRIBUTARY

12/29/2011 6:23:32 PM
 c:\pwworking\indot\proj\lewis\workspace\brms3624\21p000.dgn

RECOMMENDED FOR APPROVAL _____ DESIGN ENGINEER DATE	INDIANA DEPARTMENT OF TRANSPORTATION		HORIZONTAL SCALE		BRIDGE FILE	
			1"=30'		265-10-9601	
DESIGNED: CY DRAWN: CEW CHECKED: MBI CHECKED: PDO	GENERAL PLAN S.R. 265 WB BRIDGE		VERTICAL SCALE		DESIGNATION	
			1"=30'		0900249	
			SURVEY BOOK	DWG. NO.	SHEET NO.	
				GE-01	9 of 12	
			CONTRACT	PROJECT		
				0810245		

GENERAL NOTES

REINFORCING STEEL COVER TO BE 2.5" IN TOP AND 1" IN BOTTOM OF FLOOR SLAB, 3" IN FOOTING EXCEPT BOTTOM STEEL WHICH SHALL BE 4", AND 2" IN ALL OTHER PARTS UNLESS NOTED.

ALL THE EXPOSED FACES OF THE END BENT CAPS, THE PIERS AND THE BARRIERS SHALL BE SEALED IN ACCORDANCE WITH ARTICLE 702.21 OF THE SPECIFICATIONS. (ESTIMATE QTY = ?? SQ.FT.).

DESIGN DATA

DESIGN STRENGTHS
 BEAM CONCRETE $f'_c = 7000$ PSI
 CLASS A CONCRETE $f'_c = 3500$ PSI
 CLASS B CONCRETE $f'_c = 3000$ PSI
 CLASS C CONCRETE $f'_c = 4000$ PSI
 REINFORCING STEEL $f_y = 60,000$ PSI

LIVE LOAD
 SUPERSTRUCTURE AND SUBSTRUCTURE
 DESIGNED FOR HL-93 LOADING, IN ACCORDANCE WITH THE AASHTO LRFD BRIDGE DESIGN SPECIFICATIONS, 5TH EDITION, 2010 AND SUBSEQUENT INTERIMS.

DEAD LOAD
 FLOOR SLAB DESIGNED WITH 7 1/2" STRUCTURAL DEPTH AND 0.5" INTEGRAL WEARING SURFACE.

ACTUAL WEIGHT PLUS 35 PSF (COMPOSITE) FOR FUTURE WEARING SURFACE AND 15 PSF (NON-COMPOSITE) FOR PERMANENT METAL DECK FORMS.

SEISMIC

$S_I =$
 SITE CLASS =
 $F_v =$
 ZONE =

CONSTRUCTION LOAD

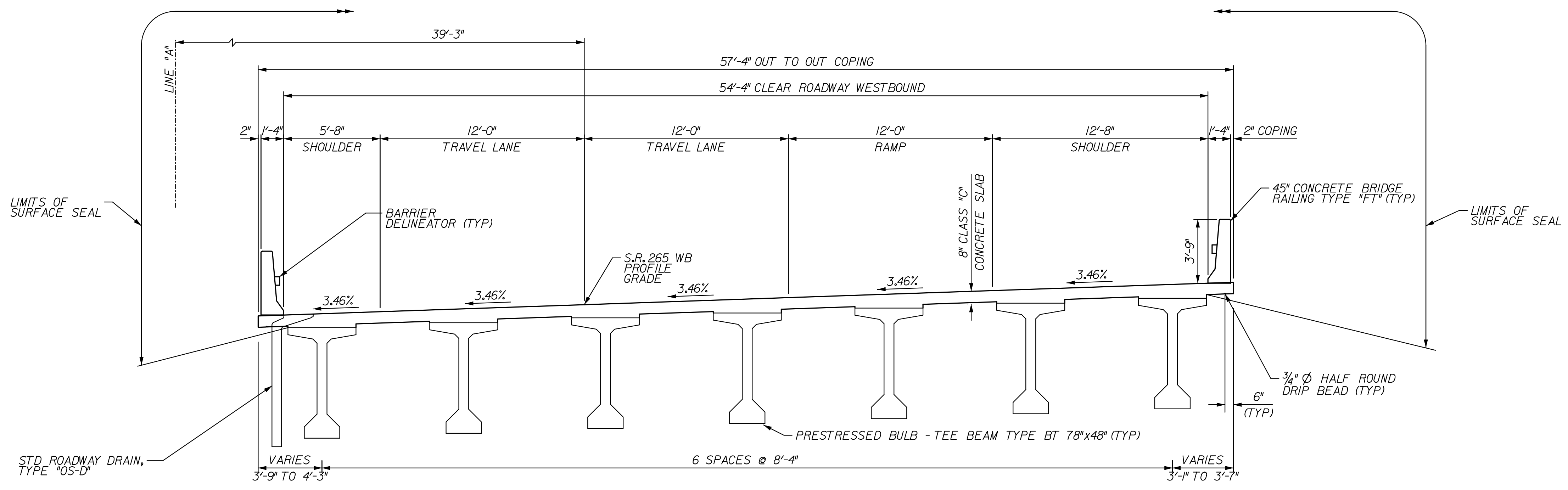
THE EXTERIOR GIRDER HAS BEEN CHECKED FOR STRENGTH, DEFLECTION, AND OVERTURNING USING THE CONSTRUCTION LOADS SHOWN BELOW. CANTILEVER OVERHANG BRACKETS WERE ASSUMED FOR SUPPORT OF THE DECK OVERHANG PAST THE EDGE OF THE EXTERIOR GIRDER. THE FINISHING MACHINE WAS ASSUMED TO BE SUPPORTED 6 IN. OUTSIDE THE VERTICAL COPING FORM. THE TOP OVERHANG BRACKETS WERE ASSUMED TO BE LOCATED 6 IN. PAST THE EDGE OF THE VERTICAL COPING FORM. THE BOTTOM OVERHANG BRACKETS WERE ASSUMED TO BE BRACED AGAINST THE INTERSECTION OF THE GIRDER BOTTOM FLANGE AND WEB.

DECK FALSEWORK LOADS: DESIGNED FOR 15 LB/FT² FOR PERMANENT METAL STAY-IN-PLACE DECK FORMS, REMOVABLE DECK FORMS, AND 2-FT EXTERIOR WALKWAY.

CONSTRUCTION LIVE LOAD: DESIGNED FOR 20 LB/FT² EXTENDING 2 FT PAST THE EDGE OF COPING AND 75 LB/FT VERTICAL FORCE APPLIED AT A DISTANCE OF 6 IN. OUTSIDE THE FACE OF COPING OVER 30-FT LENGTH OF THE DECK CENTERED WITH THE FINISHING MACHINE.

FINISHING-MACHINE LOAD: 4500 LB DISTRIBUTED OVER 10 FT ALONG THE COPING.

WIND LOAD: DESIGNED FOR 70 MPH HORIZONTAL WIND LOADING OF 50 LB/FT² IN ACCORDANCE WITH AASHTO GUIDE DESIGN SPECIFICATION FOR BRIDGE TEMPORARY WORKS (1995), FIG 2.J.



TYPICAL SECTION
 WESTBOUND LANE S.R.265
 (LOOKING AHEAD STATION)

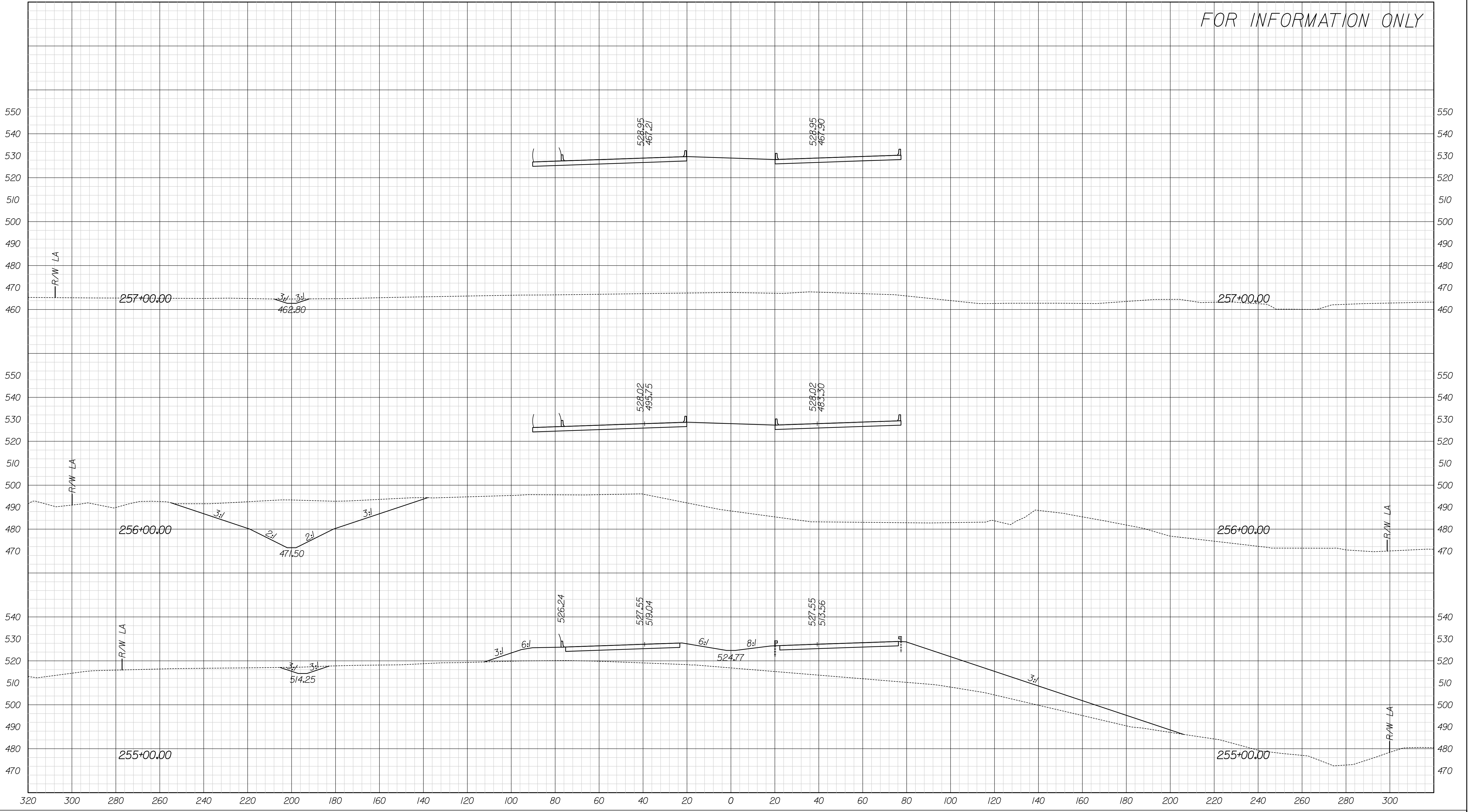
GENERAL PLAN

CONTINUOUS, COMPOSITE
 78" PRESTRESSED CONCRETE
 BULB-TEE BEAM BRIDGE

3 SPANS AT 150', 150', & 150'
 SKEW: NONE
 54'-4" CLEAR ROADWAY WB
 ON S.R. 265 OVER UTICA CHARLESTOWN RD.
 AND LENTZIER CREEK TRIBUTARY

RECOMMENDED FOR APPROVAL _____ DESIGN ENGINEER DATE	INDIANA DEPARTMENT OF TRANSPORTATION GENERAL PLAN S.R. 265 WB BRIDGE		HORIZONTAL SCALE	BRIDGE FILE	
			1/4" = 1'-0"	265-10-9601	
			VERTICAL SCALE	DESIGNATION	
DESIGNED: CYY	DRAWN: CEW	1/4" = 1'-0"	SURVEY BOOK	DWG. NO.	SHEET NO.
CHECKED: MBJ	CHECKED: PDO			GE-02	10 of 12
			CONTRACT	PROJECT	
					0810245

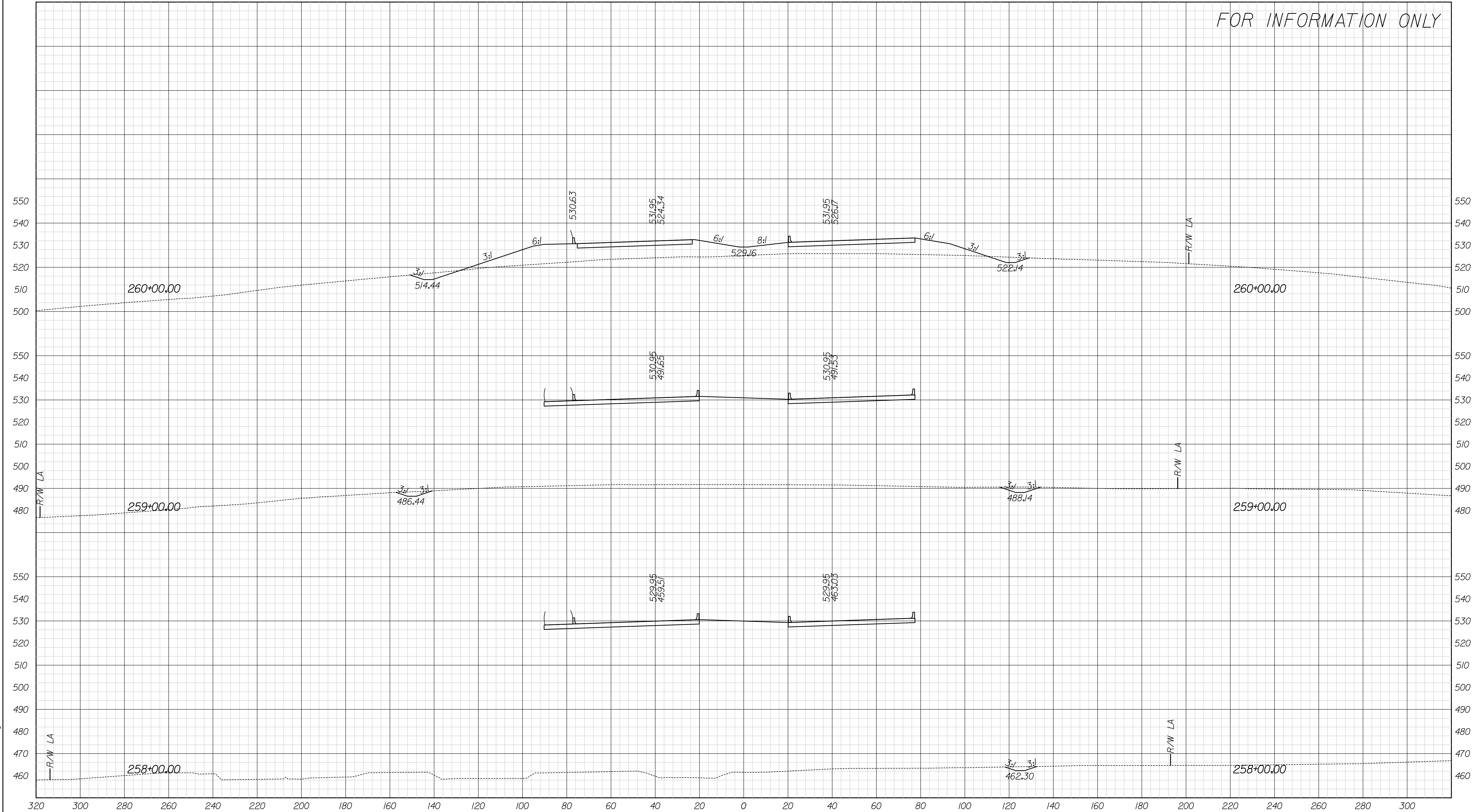
FOR INFORMATION ONLY



6:23:50 PM
 12/29/2011
 c:\pwworkspace\dotcom\proj\01\01\01\01\01.dgn

RECOMMENDED FOR APPROVAL _____ DESIGN ENGINEER DATE	INDIANA DEPARTMENT OF TRANSPORTATION CROSS SECTIONS Line "A" STA. 255+00.00 TO 257+00.00		HORIZONTAL SCALE	BRIDGE FILE
			VERTICAL SCALE	DESIGNATION
DESIGNED: PDD	DRAWN: CEW	SURVEY BOOK	DWG. NO.	SHEET NO.
CHECKED: WWM	CHECKED: PDD	CONTRACT	XS-01	11 of 12
			PROJECT	0810245

FOR INFORMATION ONLY



6:23:52 PM
 12/29/2011
 c:\pwworking\indiana\projects\0810245\0810245.dwg

	RECOMMENDED FOR APPROVAL _____ DESIGN ENGINEER DATE	INDIANA DEPARTMENT OF TRANSPORTATION	BRIDGE FILE _____
DESIGNED: PDD CHECKED: WWM	DRAWN: CEW CHECKED: PDD	CROSS SECTIONS Line "A" STA. 258+00.00 TO 260+00.00	VERTICAL SCALE 1" = 20' SURVEY BOOK _____
			DESIGNATION 0810245 DWG. NO. XS-02 SHEET NO. 12 of 12 PROJECT 0810245