

Indiana Department of Correction
February 2016

Offender Population Report

Prepared for the Justice Reinvestment Advisory Council
and State Budget Committee

Bruce Lemmon, Commissioner



TABLE OF CONTENTS

DOC Monthly Admissions - Adult Offenders	1
Current Adult Offenders, by County of Commit	4
Population Trend Graphs	6
DOC Adult Offenders – Facility Breakdowns, by highest Felony Classification	8
DOC Adult Offenders – Most Serious Offense, Alphabetical by highest Felony Classification	10
DOC Adult Offenders – Most Serious Offense, Ranked by highest Felony Classification	14
Appendix – DOC Facilities – Felony Breakdowns	18



INDIANA DEPARTMENT OF CORRECTION

for February 2016

January 2016 Admissions

by Most Serious Offense

Most Serious Offense	Murder	FA	FB	FC	FD	F1	F2	F3	F4	F5	F6	Total
Aggravated Battery	.	.	3	6	.	.	.	9
Aiding Inducing/Causing An Offense	.	.	1	3	1	.	1	1	2	2	1	12
Arson	.	.	3	3
Assisting A Criminal	.	.	.	2	1	3
Attempt To Commit Felony	.	1	2	2	2	1	.	2	.	2	1	13
Auto Theft, Receiving Stolen Auto Parts	.	.	.	2	4	3	9
Battery	.	.	.	11	4	.	1	2	.	18	1	37
Battery By Bodily Waste	1	1
Burglary	.	.	58	22	.	1	1	1	20	18	.	121
Carjacking	.	.	1	1
Carrying Handgun Without License	.	.	.	3	3
Check Deception	1	1
Child Exploitation	1	.	1
Child Molesting	.	5	10	11	.	1	.	1	2	.	.	30
Child Seduction	.	.	.	1	1
Child Solicitation	.	.	.	2	2	.	4
Conspiracy	.	.	4	1	.	.	1	1	1	3	.	11
Corrupt Business Influence	.	.	.	1	1	.	2
Criminal Confinement	.	.	2	2	.	.	.	2	.	3	.	9
Criminal Deviate Conduct	.	1	1	2
Criminal Recklessness	.	.	.	1	3	3	.	7
Criminal Trespass	1	1
Deal Substance Represented To Be Controlled Substance	1	1
Dealing In Cocaine Or Narcotic Drug	.	9	32	.	.	.	7	3	7	12	.	70
Dealing In Marijuana, Hash, or Hash Oil	.	.	.	1	1
Dealing In Methamphetamine	.	2	17	.	.	.	4	4	12	21	.	60
Dealing In Schedule IV Controlled Substance	.	.	1	1	.	2
Dealing Possessing Look-Alike Substance	.	.	.	1	1	.	2
Dealng A Sched I, II, III Control Subst	2	2
Dealng In a Schedule I, II, or III Controlled Substance	.	3	23	26
Domestic Battery	8	2	10
Driving While Intoxicated	2	2
Escape	1	4	5
Fail To Stop After Accident - Operating Vehicle Intoxicated	.	.	1	1
Fail To Stop At An Accident/Sbi/Prior	1	.	.	1	.	.	.	2
Failure Of Sex Offender To Possess Id	1	1

Note: 9 current admissions have missing sentencing data due to processing or safekeepers.

INDIANA DEPARTMENT OF CORRECTION

for February 2016

January 2016 Admissions

by Most Serious Offense

Most Serious Offense	Murder	FA	FB	FC	FD	F1	F2	F3	F4	F5	F6	Total
Failure To Register As A Sex Offender	.	.	.	3	5	6	.	14
Failure To Return Lawful Detention/Escape	.	.	1	2	2	5
Firearm Within 1 Mile School Property Without License	.	.	.	3	3
Forgery,Counterfeiting,Application Fraud	.	.	.	22	1	3	26
Fraud	3	3
Fraud On A Financial Institution	.	.	.	2	5	.	7
Handgun Violation (Felony Within 15 Yrs)	.	.	.	1	15	.	16
Home Improvement Fraud Offenses	1	1
Identity Deception	2	2
Incest	.	.	1	1
Insurance Fraud	.	.	.	1	1
Intimidation	.	.	.	1	3	5	1	10
Kidnapping	1	1	.	.	.	2
Maintaining Common Nuisance	1	2	3
Murder	8	8
Neglect Of A Dependent	.	.	1	.	1	1	.	3
Neglect Of A Dependent Resulting in Serious Injury	2	.	.	.	2
Non Support Of Dependent Child	.	.	.	5	5	10
Obliterating Handgun I.D.	.	.	.	1	1
Obstruction Of Justice	1	1	2
Operate Vehicle After Suspended For Life	.	.	.	13	21	.	34
Operating Vehicle Intoxicated Resulting in Death	.	.	3	1	.	4
Operating Vehicle Intoxicated Resulting in Serious Bodily Injury	1	1
Operating Vehicle While Intoxicated-Previous Conviction	12	1	13
Operating Vehicle-Habit Traffic Violator	2	2	4
Opererating Vehicle While Intoxicated - Endangering Person	3	3
Possess Chemical Reagents Or Precursors	.	.	.	1	2	.	3
Possess Of Precursors	4	4
Possession Of A Controlled Substance	.	.	1	4	17	22
Possession Of Cocaine Or Narcotic Drug	.	.	5	7	8	.	.	2	1	6	6	35
Possession Of Dangerous Device	2	1	.	3
Possession Of Marijuana, Hash, Hash Oil	8	8
Possession Of Methamphetamine	.	.	1	4	13	.	.	2	2	2	5	29
Possession Of Paraphernalia	2	2
Possession Of Syringes Or Needles	2	1	3
Possession Or Use Of Legend Drug	1	1

Note: 9 current admissions have missing sentencing data due to processing or safekeepers.

INDIANA DEPARTMENT OF CORRECTION
for February 2016
January 2016 Admissions
by Most Serious Offense

Most Serious Offense	Murder	FA	FB	FC	FD	F1	F2	F3	F4	F5	F6	Total
Prescription Fraud	1	1
Prostitution	1	1	2
Rape	.	.	4	4
Reckless Homicide	.	.	.	1	1	.	2
Residential Entry	2	2	4
Resisting Law Enforcement	3	1	.	4
Robbery	.	1	25	6	.	.	4	17	.	9	.	62
Sexual Battery	2	2	4
Sexual Misconduct With A Minor	.	.	3	7	1	.	.	.	2	4	.	17
Stalking	2	3	.	5
Strangulation	1	1
Theft,Receiving Stolen Property	58	13	71
Trafficking With An Inmate	.	.	.	2	2	.	4
Unlawful Firearm Poss By Serious Felon	.	.	7	10	.	.	17
Unlawful Transfer of Handgun Ownership	1	.	1
Vicarious Sexual Gratification	.	.	1	1
Voluntary Manslaughter	.	1	3	4
Voyeurism	1	1
Welfare Fraud	.	.	.	1	1
Total	8	23	212	153	201	3	25	48	61	175	52	961

INDIANA DEPARTMENT OF CORRECTION
ADULT OFFENDERS
by County of Commitment
for February 2016
snapshot date: 02/01/2016

County of Commit	Department of Correction	**Community Corrections Programs	Local Jail Holds		COUNTY TOTALS
			DOC Contract	Statutorily Mandated	
Adams	160	59	0	0	219
Allen	1,578	698	18	15	2,309
Bartholomew	303	331	1	1	636
Benton*	17	0	1	0	18
Blackford	71	83	2	2	158
Boone	160	48	0	4	212
Brown	40	23	2	0	65
Carroll*	70	0	5	0	75
Cass	184	128	3	0	315
Clark	237	97	4	4	342
Clay	57	132	13	12	214
Clinton	165	62	0	6	233
Crawford	37	47	1	0	85
Daviess	100	191	5	0	296
Dearborn	433	151	9	14	607
Decatur	126	328	5	0	459
DeKalb	141	132	1	0	274
Delaware	382	848	7	0	1,237
Dubois	89	215	1	0	305
Elkhart	1,611	291	28	3	1,933
Fayette	197	81	4	3	285
Floyd	212	137	12	0	361
Fountain	40	36	0	1	77
Franklin*	94	0	5	3	102
Fulton	101	18	4	0	123
Gibson	116	50	3	0	169
Grant	426	132	19	16	593
Greene	146	67	1	2	216
Hamilton	378	222	0	20	620
Hancock	129	214	3	7	353
Harrison	125	97	1	0	223
Hendricks	237	88	10	39	374
Henry	255	98	0	0	353
Howard	353	437	25	4	819
Huntington	356	47	2	6	411
Jackson	214	126	8	3	351
Jasper	70	114	0	1	185
Jay	185	23	1	0	209
Jefferson	237	274	2	2	515
Jennings	133	35	3	4	175
Johnson	374	256	4	15	649

*Counties that are not participating in Community Corrections

** Community Corrections data as of 02/02/16

INDIANA DEPARTMENT OF CORRECTION
ADULT OFFENDERS
by County of Commitment
for February 2016
snapshot date: 02/01/2016

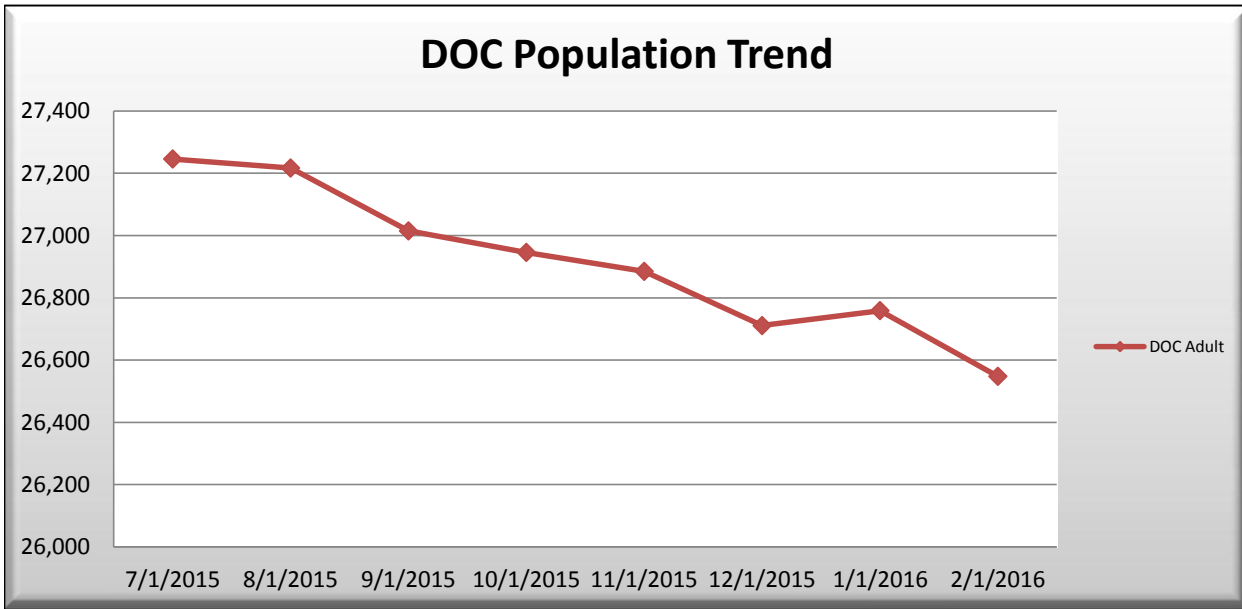
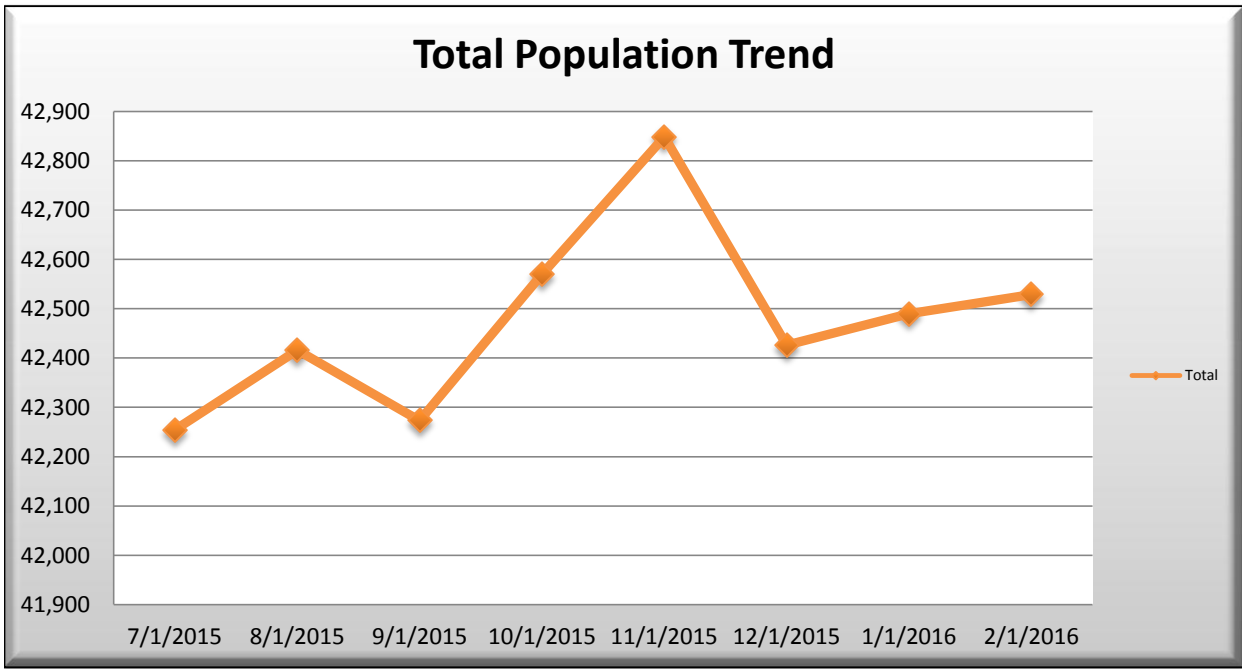
County of Commit	Department of Correction	**Community Corrections Programs	Local Jail Holds		COUNTY TOTALS
			DOC Contract	Statutorily Mandated	
Knox	59	182	0	0	241
Kosciusko*	195	0	12	8	215
LaGrange	61	66	3	2	132
Lake	1,207	280	24	0	1,511
LaPorte	379	187	12	0	578
Lawrence	197	263	4	2	466
Madison	1,120	297	7	2	1,426
Marion	5,489	2,504	49	79	8,121
Marshall	148	46	5	8	207
Martin	47	41	1	0	89
Miami	78	45	3	0	126
Monroe	358	435	2	0	795
Montgomery	202	36	4	0	242
Morgan	208	36	7	22	273
Newton*	51	0	1	2	54
Noble	156	324	4	0	484
Ohio	43	7	0	0	50
Orange	53	97	0	0	150
Owen	40	162	0	1	203
Parke	45	7	1	2	55
Perry	78	51	1	2	132
Pike	64	71	0	0	135
Porter	277	115	1	4	397
Posey	111	27	3	0	141
Pulaski	34	7	1	0	42
Putnam	82	65	21	8	176
Randolph	50	62	2	0	114
Ripley	119	48	5	5	177
Rush	87	37	3	0	127
St Joseph	1,018	191	32	40	1,281
Scott	167	128	5	8	308
Shelby	341	187	7	13	548
Spencer	29	133	3	0	165
Starke	105	52	12	0	169
Steuben	129	189	1	6	325
Sullivan	37	29	0	0	66
Switzerland	21	8	2	0	31
Tippecanoe	753	296	11	21	1,081
Tipton	15	8	0	0	23
Union	22	13	0	0	35
Vanderburgh	840	590	23	27	1,480
Vermillion	62	16	5	0	83
Vigo	390	428	18	6	842
Wabash	199	45	2	0	246
Warren	19	9	18	0	46
Warrick	58	19	7	4	88
Washington	126	118	0	0	244
Wayne	507	124	29	4	664
Wells	150	50	9	0	209
White	71	72	1	13	157
Whitley	94	312	0	0	406
Missing	18	0	0	0	18
TOTALS	26,548	14,931	574	476	42,529
			1,050		

*Counties that are not participating in Community Corrections

** Community Corrections data as of 02/02/16

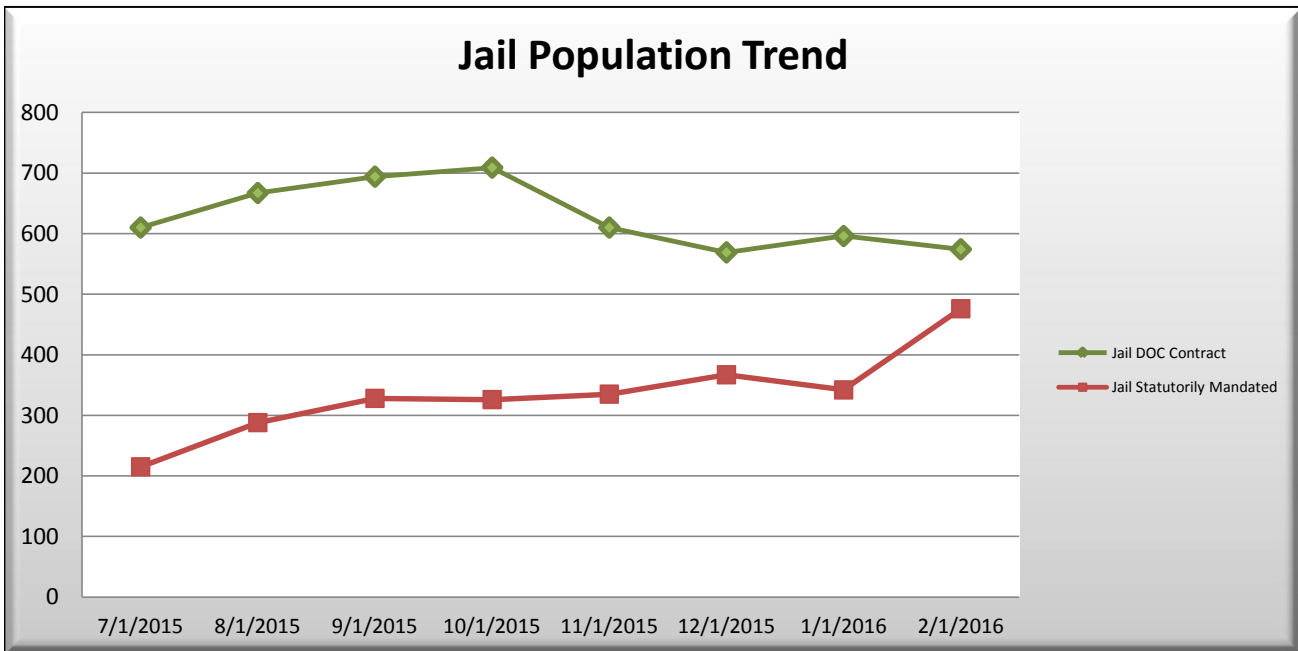
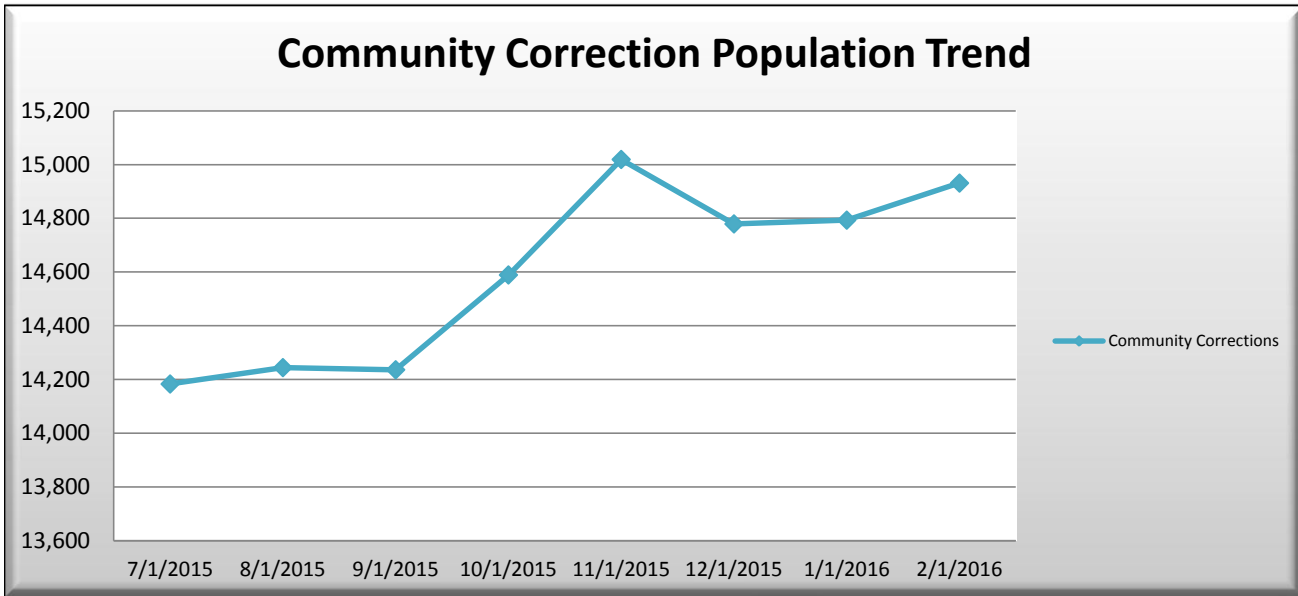
INDIANA DEPARTMENT OF CORRECTION
 ADULT OFFENDERS
 Population Trend Summary
 for February 2016
 snapshot date: 02/01/2016

Date	DOC Adult	Community Corrections	Jail DOC Contract	Jail Statutorily Mandated	Total
7/1/2015	27,246	14,183	610	215	42,254
8/1/2015	27,217	14,244	667	288	42,416
9/1/2015	27,015	14,236	694	328	42,273
10/1/2015	26,946	14,589	709	326	42,570
11/1/2015	26,885	15,019	610	335	42,849
12/1/2015	26,711	14,779	569	367	42,426
1/1/2016	26,759	14,793	596	342	42,490
2/1/2016	↓ 26,548	↑ 14,931	↓ 574	↑ 476	↑ 42,529



INDIANA DEPARTMENT OF CORRECTION
 ADULT OFFENDERS
 Population Trend Summary
 for February 2016
 snapshot date: 02/01/2016

Date	DOC Adult	Community Corrections	Jail DOC Contract	Jail Statutorily Mandated	Total
7/1/2015	27,246	14,183	610	215	42,254
8/1/2015	27,217	14,244	667	288	42,416
9/1/2015	27,015	14,236	694	328	42,273
10/1/2015	26,946	14,589	709	326	42,570
11/1/2015	26,885	15,019	610	335	42,849
12/1/2015	26,711	14,779	569	367	42,426
1/1/2016	26,759	14,793	596	342	42,490
2/1/2016	↓ 26,548	↑ 14,931	↓ 574	↑ 476	↑ 42,529



INDIANA DEPARTMENT OF CORRECTION
by highest felony classification
for February 2016
snapshot date: 02/01/2016

Minimum Security - Adult MALE															
Facility Name	Beds	Offenders	% Capacity	Murder	FA	FB	FC	FD	F1	F2	F3	F4	F5	F6	HO
Chain O'Lakes	133	124	93.2%	.	9	64	17	13	.	.	1	1	19	.	
Edinburgh	320	270	84.4%	.	12	101	41	39	.	.	2	8	34	33	.
Henryville	168	132	78.6%	.	7	53	21	20	.	.	.	4	17	10	.
Miami - MCA	204	196	96.1%	5	37	53	22	31	.	.	.	7	25	16	.
New Castle - NCA	204	201	98.5%	.	8	43	30	39	.	.	.	6	39	36	.
Pendleton - IRO	220	212	96.4%	10	37	76	30	18	.	.	1	3	23	14	.
Westville - WCA	379	351	92.6%	4	12	139	49	37	.	.	3	21	55	31	.
Wabash Valley - WVA	198	131	66.2%	.	4	58	20	14	.	.	.	3	14	18	.
Indianapolis Re-Entry	420	296	70.5%	16	70	172	32	3	2	1	.
Sub-Total	2,246	1,913	85.2%	35	196	759	262	214	0	0	7	53	228	159	0

Re-Entry & Work Release - Adult MALE															
Facility Name	Beds	Offenders	% Capacity	Murder	FA	FB	FC	FD	F1	F2	F3	F4	F5	F6	HO
Bartholomew Co. Re-Entry	25	7	28.0%	.	.	3	2	2	.
Chain O'Lakes Re-Entry	3	3	100.0%	.	.	3
Clark Co. Re-Entry	25	9	36.0%	.	.	6	1	2
Duvall Center Re-Entry	50	35	70.0%	.	5	16	7	5	2	.	.
Elkhart Co. Re-Entry	20	0	0.0%
Lake Co. Re-Entry	20	1	5.0%	.	.	1
Liberty Hall Re-Entry	135	9	6.7%	.	.	7	.	2
South Bend Re-Entry	172	165	95.9%	6	13	81	29	20	9	7	.
Tippecanoe County Re-Entry	20	3	15.0%	.	1	1	.	1
VOA/Hope Hall Re-Entry	30	16	53.3%	.	1	7	1	4	2	1	.
Starke Co. PI - TC	48	0	0.0%
Sub-Total	548	248	45.3%	6	20	125	40	34	0	0	0	0	13	10	0

Medium Security - Adult MALE															
Facility Name	Beds	Offenders	% Capacity	Murder	FA	FB	FC	FD	F1	F2	F3	F4	F5	F6	HO
Branchville	1485	1262	85.0%	9	52	636	190	94	.	7	34	57	108	74	1
Correctional Industrial	1449	1419	97.9%	105	461	653	120	16	.	16	17	6	14	11	.
Indiana State Prison ISO	385	295	76.6%	17	45	119	46	26	.	.	2	5	15	20	.
Plainfield	1696	1673	98.6%	33	130	718	295	136	.	8	43	63	134	113	.
Putnamville	2504	2268	90.6%	23	153	1064	369	150	.	30	64	100	183	131	.
Heritage Trail	868	853	98.3%	.	4	276	165	116	.	4	21	35	111	121	.
Westville	2941	2545	86.5%	29	153	1094	451	191	.	9	85	86	258	187	2
New Castle	2431	2404	98.9%	17	651	1049	430	61	1	.	28	54	70	43	.
Sub-Total	13,759	12,719	92.4%	233	1,649	5,609	2,066	790	1	74	294	406	893	700	3

INDIANA DEPARTMENT OF CORRECTION
by highest felony classification
for February 2016
snapshot date: 02/01/2016

Maximum Security - Adult MALE															
Miami	2984	2873	96.3%	141	885	1307	243	69	12	39	61	26	51	37	.
Indiana State Prison	2067	1946	94.1%	707	788	360	41	10	23	3	6	3	1	3	.
Pendleton	1353	1279	94.5%	434	555	227	29	1	10	6	5	3	5	3	.
Pendleton Treatment Unit	298	192	64.4%	44	49	64	17	6	1	.	2	.	7	1	.
ISR Secure Housing Unit	69	53	76.8%	19	11	21	1	1	.	.
Reception Diag. Center	695	389	56.0%	5	10	76	54	69	1	10	21	20	81	37	.
New Castle Annex	480	442	92.1%	66	125	186	51	9	.	.	.	1	1	3	.
New Castle Mental Health	128	123	96.1%	18	32	35	17	9	.	.	3	.	4	2	.
WCU Secure Housing Unit	110	104	94.5%	17	19	49	15	3	1	.
Wabash Valley	1786	1673	93.7%	542	684	324	51	7	19	4	17	8	9	5	0
WVS Secure Housing Unit	216	149	69.0%	40	36	62	9	2
Sub-Total	10,186	9,223	90.5%	2,033	3,194	2,711	528	185	66	62	115	61	160	92	0

Minimum Security & Re-Entry - Adult FEMALE															
Facility Name	Beds	Offenders	% Capacity	Murder	FA	FB	FC	FD	F1	F2	F3	F4	F5	F6	HO
Madison	662	551	83.2%	1	24	261	78	66	.	2	4	28	42	45	.
Brandon Hall Re-Entry	24	0	0.0%
Crane House	25	24	96.0%	.	1	8	2	8	1	4	.
Elkhart Co. Re-Entry	0	0	0.0%
Jefferson Co. Re-Entry	58	39	67.2%	1	4	15	11	6	2	.
Liberty Hall Re-Entry	100	26	26.0%	.	.	11	6	6	1	2	.
Theodora House	8	8	100.0%	.	1	.	2	3	.	.	1	.	1	.	.
VOA/Evansville/Female	20	12	60.0%	.	1	5	4	1	1	.	.
Sub-Total	897	660	73.6%	2	31	300	103	90	0	2	5	28	46	53	0

Medium Security - Adult FEMALE															
Facility Name	Beds	Offenders	% Capacity	Murder	FA	FB	FC	FD	F1	F2	F3	F4	F5	F6	HO
Rockville	981	943	96.1%	48	162	344	120	82	2	8	21	29	57	70	.
Sub-Total	981	943	96.1%	48	162	344	120	82	2	8	21	29	57	70	0

Maximum Security - Adult FEMALE															
Women's Prison	631	612	97.0%	74	90	171	89	82	.	6	10	12	26	51	.
Rockville Intake	288	230	79.9%	.	4	44	20	62	.	2	6	10	36	46	.
Sub-Total	919	842	91.6%	74	94	215	109	144	0	8	16	22	62	97	0

TOTAL	29,536	26,548	89.9%	2,431	5,346	10,063	3,228	1,539	69	154	458	599	1,459	1,181	3
--------------	---------------	---------------	--------------	--------------	--------------	---------------	--------------	--------------	-----------	------------	------------	------------	--------------	--------------	----------

INDIANA DEPARTMENT OF CORRECTION
ADULT OFFENDERS
by Most Serious Offense, Alphabetical
for February 2016
snapshot date: 02/01/2016

Most Serious Offense	Murder	FA	FB	FC	FD	F1	F2	F3	F4	F5	F6	HO	Total
Accident Fail To Stop Reulting in Serious Injury or Death	.	.	6	4	1	.	.	.	1	3	.	.	15
Aggravated Battery	.	.	318	53	371
Aiding Inducing/Causing An Offense	.	52	109	17	11	2	.	8	8	17	1	.	225
Aiding in Manufacture of Sch II Controlled Substance	2	.	2
Animal Fighting Contest	1	1
Arson	.	21	96	.	2	.	.	.	9	.	.	.	128
Assisting A Criminal	.	.	.	8	3	1	5	.	17
Assisting Suicide	.	.	.	1	1
Attempt To Commit Felony	.	580	199	34	17	20	5	13	4	20	8	.	900
Auto Theft, Receiving Stolen Auto Parts	.	.	.	37	33	1	68	.	139
Battery	.	25	72	305	40	.	1	13	.	221	55	.	732
Battery By Bodily Waste	.	.	.	3	8	11
Battery On Law Enforcement	1	1
Battery To A Child Causing Death	.	7	7
Bribery	.	.	.	1	1	.	.	2
Burglary	.	290	1,906	540	.	7	17	5	245	165	.	.	3,175
Carjacking	.	.	66	66
Carrying Handgun Without License	.	.	.	40	40
Causing Suicide	.	.	1	1
Check Fraud	.	.	.	9	2	1	.	12
Child Exploitation	.	.	.	16	1	4	.	.	21
Child Molesting	.	1,445	542	267	.	23	.	16	27	.	.	.	2,320
Child Seduction	.	.	.	3	1	4	.	.	8
Child Solicitation	.	.	1	17	5	.	.	.	1	9	.	.	33
Conspiracy	.	137	195	18	1	1	11	10	9	20	3	.	405
Controlled Substance Registration	.	.	.	4	5	1	2	.	12
Conversion	2	.	2
Corrupt Business Influence	.	.	.	40	19	.	.	59
Criminal Confinement	.	.	211	48	13	.	.	21	.	28	6	.	327
Criminal Deviate Conduct	.	145	121	266
Criminal Gang Activity	2	2
Criminal Recklessness	.	.	.	33	22	20	11	.	86
Criminal Trespass	4	1	.	5
Cruelty To Animals	1	.	1
Dangerous Control Of A Handgun	2	.	.	2
Deal Sub Represented To Be Controlled Sub	2	.	2
Deal Substance Represented To Be Controlled Substance	5	5
Dealing In A Sawed Off Shotgun	1	1
Dealing In A Schedule V Controlled Substance	.	.	3	3
Dealing In Cocaine Or Narcotic Drug	.	1,075	1,397	2	.	.	56	28	60	91	.	.	2,709
Dealing In Marijuana, Hash, or Hash Oil	.	.	.	14	10	8	3	.	35
Dealing In Methamphetamine	.	286	1,159	.	.	.	35	36	98	143	.	.	1,757
Dealing In Sched Iv Controlled Substance	1	1

INDIANA DEPARTMENT OF CORRECTION
ADULT OFFENDERS
by Most Serious Offense, Alphabetical
for February 2016
snapshot date: 02/01/2016

Most Serious Offense	Murder	FA	FB	FC	FD	F1	F2	F3	F4	F5	F6	HO	Total
Dealing In Schedule IV Controlled Substance	.	.	24	27	7	.	.	58
Dealing Possessing Look-Alike Substance	.	.	.	13	6	2	.	21
Dealng A Sched I, Ii, Iii Control Subst	3	1	5	.	.	.	9
Dealing In a Schedule I, II, or III Controlled Substance	.	119	724	2	1	.	846
Disarming A Law Enforcement Officer	.	.	.	3	5	.	.	8
Distribute Destructive Device To Minor	.	.	1	1
Domestic Battery	63	45	.	108
Driving After Forfeiture	.	.	.	2	2
Driving While Intoxicated	2	2
Driving While Suspended Resulting In Death	.	.	.	1	1
Escape	2	34	95	.	131
Fail To Return To Accident Resulting in Serious Injury	1	.	1
Fail To Stop After Accident - Operating Vehicle Intoxicated	.	.	7	7
Fail To Stop At An Accident/Sbi/Prior	2	2
Failure Of Sex Offender To Possess Id	2	2
Failure To Appear	3	.	3
Failure To Register As A Sex Offender	.	.	.	59	16	57	13	.	145
Failure To Return Lawful Detention/Escape	.	.	15	55	36	106
False Statement On Consent Form	1	1
Firearm Within 1 Mile School Property Without License	.	.	.	54	54
Forgery,Counterfeiting,Application Fraud	.	.	.	424	3	35	.	462
Fraud	10	13	.	23
Fraud On A Financial Institution	.	.	.	40	27	.	.	67
Habitual Offender	1	1
Habitual Offender Substance Abuse	3	2	5
Handgun Violation	.	.	.	3	2	5
Handgun Violation (Felony Within 15 Yrs)	.	.	.	26	120	.	.	146
Home Improvement Fraud Enhancement	.	.	.	5	1	6
Home Improvement Fraud Offenses	2	2
Human Sexual Trafficking	.	.	3	1	.	.	.	4
Identity Deception	.	.	.	1	9	2	.	12
Illegal Possession Of Firearm By Felon	.	.	.	2	2
Illegal Sex Offender Residency	1	1
Impersonating A Public Servant	1	.	1
Incest	.	.	29	16	1	2	.	.	48
Interference W/Medical Services	.	.	.	1	1
Intimidation	.	.	.	44	26	23	29	.	122
Invasion Of Privacy	4	13	.	17
Involuntary Manslaughter	.	.	.	4	4
Kidnapping	.	92	4	.	2	1	.	99
Maintaining Common Nuisance	30	27	.	57
Minor Passenger In Vehicle - Previous Conviction	.	.	.	3	3
Mischief	.	.	.	1	1	2

INDIANA DEPARTMENT OF CORRECTION
ADULT OFFENDERS
by Most Serious Offense, Alphabetical
for February 2016
snapshot date: 02/01/2016

Most Serious Offense	Murder	FA	FB	FC	FD	F1	F2	F3	F4	F5	F6	HO	Total
Money Laundering Over \$50,000	1	.	.	1
Murder	2,431	2,431
Neglect Of A Dependent	.	.	66	27	10	4	7	.	114
Neglect Of A Dependent Resulting in Serious Injury	13	13
Neglect Of Dependent Resulting In Death	.	66	.	.	.	1	67
Non Support Of Dependent Child	.	.	.	82	30	1	.	.	113
Obliterating Handgun I.D.	.	.	.	10	1	.	.	11
Obstruction Of Justice	4	4	.	8
Official Misconduct	1	.	1
Operate Vehicle After Suspended For Life	.	.	.	204	169	.	.	373
Operating Vehicle Intoxicated Resulting in Death	.	.	69	13	8	6	.	.	96
Operating Vehicle Intoxicated Resulting in Serious Bodily Injury	.	.	.	10	5	6	3	.	24
Operating Vehicle While Intoxicated-Previous Conviction	127	1	37	.	165
Operating Vehicle With Schedule I in Body - Causing Death	.	.	.	1	1
Operating Vehicle-Habit Traffic Violator	.	.	.	1	40	30	.	71
Opererating Vehicle - Schedule I Or II Control Substance	9	9
Opererating Vehicle While Intoxicated - Endangering Person	31	31
Opererating Vehicle While Intoxicated - Prior Conviction	45	.	45
Perform Sex Conduct In Presence Of Minor	2	.	2
Perjury	1	.	1
Permitting Child To Possess Firearm	.	.	.	1	1
Pointing A Firearm	3	2	.	5
Possess Chemical Reagents Or Precursors	.	.	.	38	5	.	.	43
Possess Destructive Device Or Explosive	.	1	1
Possess Methamphetamine Without Pay Tax	1	1
Possess Of Precursors	29	14	.	43
Possession Of A Controlled Substance	.	.	4	58	89	2	.	153
Possession Of A Destructive Device	.	.	.	2	2
Possession Of Child Pornography	2	3	.	5
Possession Of Cocaine Or Narcotic Drug	.	82	119	80	62	.	.	4	10	23	78	.	458
Possession Of Dangerous Device	5	1	.	.	6
Possession Of Marijuana, Hash, Hash Oil	40	6	.	46
Possession Of Methamphetamine	.	7	116	47	74	.	.	5	4	32	80	.	365
Possession Of Paraphernalia	5	9	.	14

INDIANA DEPARTMENT OF CORRECTION
ADULT OFFENDERS
by Most Serious Offense, Alphabetical
for February 2016
snapshot date: 02/01/2016

Most Serious Offense	Murder	FA	FB	FC	FD	F1	F2	F3	F4	F5	F6	HO	Total
Possession Of Syringes Or Needles	.	.	.	4	22	4	17	.	47
Possession Or Use Of Legend Drug	3	10	.	13
Prescription Fraud	1	1
Prisoner Poss. Dangerous Device/Material	.	.	12	4	16
Promoting Prostitution	.	.	.	3	3
Promoting Prostitution Under Age 18	.	.	7	7
Prostitution	1	5	.	6
Public Indecency	1	2	.	3
Rape	.	279	167	.	.	15	.	16	477
Reckless Homicide	.	.	.	35	7	.	.	42
Removing, Damaging, Or Altering a VIN	.	.	.	1	1	.	.	2
Residential Entry	23	35	.	58
Resisting Law Enforcement	.	.	7	5	42	3	41	.	98
Robbery	.	274	1,367	209	.	.	17	211	.	92	.	.	2,170
Sale Of Unregistered Security	.	.	.	2	2
Security Fraud	.	.	3	3
Service Provider Sex Miscond W/Detainee	.	.	1	1
Sexual Battery	.	.	.	3	15	.	.	.	2	.	7	.	27
Sexual Misconduct With A Minor	.	4	327	85	4	.	.	.	18	13	1	.	452
Stalking	.	.	4	18	4	.	.	.	1	11	1	.	39
Strangulation	27	23	.	50
Synthetic Identity Deception	1	1
Theft,Receiving Stolen Property	.	.	.	7	424	2	263	.	696
Trafficking With An Inmate	.	.	.	24	12	.	.	36
Unlawful Firearm Poss By Serious Felon	.	.	537	80	.	.	.	617
Unlawful Possession Of Smoking Instrumen	1	1
Unlawful Transfer of Handgun Ownership	1	.	.	1
Vicarious Sexual Gratification	.	.	4	2	1	7
Violation Of 1935 Firearms Act	1	1
Violation Of Custody Order	1	1
Voluntary Manslaughter	.	359	48	.	.	.	9	416
Voyeurism	3	3
Welfare Fraud	.	.	.	7	7
Total	2,431	5,346	10,063	3,228	1,539	69	154	458	599	1,459	1,181	3	26,530

INDIANA DEPARTMENT OF CORRECTION
ADULT OFFENDERS
by Most Serious Offense, Ranked
for February 2016
snapshot date: 02/01/2016

Most Serious Offense	Murder	FA	FB	FC	FD	F1	F2	F3	F4	F5	F6	HO	Total
Burglary	.	290	1,906	540	.	7	17	5	245	165	.	.	3,175
Dealing In Cocaine Or Narcotic Drug	.	1,075	1,397	2	.	.	56	28	60	91	.	.	2,709
Murder	2,431	2,431
Child Molesting	.	1,445	542	267	.	23	.	16	27	.	.	.	2,320
Robbery	.	274	1,367	209	.	.	17	211	.	92	.	.	2,170
Dealing In Methamphetamine	.	286	1,159	.	.	.	35	36	98	143	.	.	1,757
Attempt To Commit Felony	.	580	199	34	17	20	5	13	4	20	8	.	900
Dealing In a Schedule I, II, or III Controlled Substance	.	119	724	2	1	.	846
Battery	.	25	72	305	40	.	1	13	.	221	55	.	732
Theft,Receiving Stolen Property	.	.	.	7	424	2	263	.	696
Unlawful Firearm Poss By Serious Felon	.	.	537	80	.	.	.	617
Rape	.	279	167	.	.	15	.	16	477
Forgery,Counterfeiting,Application Fraud	.	.	.	424	3	35	.	462
Possession Of Cocaine Or Narcotic Drug	.	82	119	80	62	.	.	4	10	23	78	.	458
Sexual Misconduct With A Minor	.	4	327	85	4	.	.	.	18	13	1	.	452
Voluntary Manslaughter	.	359	48	.	.	.	9	416
Conspiracy	.	137	195	18	1	1	11	10	9	20	3	.	405
Operate Vehicle After Suspended For Life	.	.	.	204	169	.	.	373
Aggravated Battery	.	.	318	53	371
Possession Of Methamphetamine	.	7	116	47	74	.	.	5	4	32	80	.	365
Criminal Confinement	.	.	211	48	13	.	.	21	.	28	6	.	327
Criminal Deviate Conduct	.	145	121	266
Aiding Inducing/Causing An Offense	.	52	109	17	11	2	.	8	8	17	1	.	225
Operating Vehicle While Intoxicated-Previous Conviction	127	1	37	.	165
Possession Of A Controlled Substance	.	.	4	58	89	2	.	153
Handgun Violation (Felony Within 15 Yrs)	.	.	.	26	120	.	.	146
Failure To Register As A Sex Offender	.	.	.	59	16	57	13	.	145
Auto Theft, Receiving Stolen Auto Parts	.	.	.	37	33	1	68	.	139
Escape	2	34	95	.	131
Arson	.	21	96	.	2	.	.	.	9	.	.	.	128
Intimidation	.	.	.	44	26	23	29	.	122
Neglect Of A Dependent	.	.	66	27	10	4	7	.	114
Non Support Of Dependent Child	.	.	.	82	30	1	.	.	113
Domestic Battery	63	45	.	108
Failure To Return Lawful Detention/Escape	.	.	15	55	36	106
Kidnapping	.	92	4	.	2	1	.	99
Resisting Law Enforcement	.	.	7	5	42	3	41	.	98
Operating Vehicle Intoxicated Resulting in Death	.	.	69	13	8	6	.	.	96
Criminal Recklessness	.	.	.	33	22	20	11	.	86
Operating Vehicle-Habit Traffic Violator	.	.	.	1	40	30	.	71

INDIANA DEPARTMENT OF CORRECTION
ADULT OFFENDERS
by Most Serious Offense, Ranked
for February 2016
snapshot date: 02/01/2016

Most Serious Offense	Murder	FA	FB	FC	FD	F1	F2	F3	F4	F5	F6	HO	Total
Fraud On A Financial Institution	.	.	.	40	27	.	.	67
Neglect Of Dependent Resulting In Death	.	66	.	.	.	1	67
Carjacking	.	.	66	66
Corrupt Business Influence	.	.	.	40	19	.	.	59
Dealing In Schedule IV Controlled Substance	.	.	24	27	7	.	.	58
Residential Entry	23	35	.	58
Maintaining Common Nuisance	30	27	.	57
Firearm Within 1 Mile School Property Without License	.	.	.	54	54
Strangulation	27	23	.	50
Incest	.	.	29	16	1	2	.	.	48
Possession Of Syringes Or Needles	.	.	.	4	22	4	17	.	47
Possession Of Marijuana, Hash, Hash Oil	40	6	.	46
Operating Vehicle While Intoxicated - Prior Conviction	45	.	45
Possess Chemical Reagents Or Precursors	.	.	.	38	5	.	.	43
Possess Of Precursors	29	14	.	43
Reckless Homicide	.	.	.	35	7	.	.	42
Carrying Handgun Without License	.	.	.	40	40
Stalking	.	.	4	18	4	.	.	.	1	11	1	.	39
Trafficking With An Inmate	.	.	.	24	12	.	.	36
Dealing In Marijuana, Hash, or Hash Oil	.	.	.	14	10	8	3	.	35
Child Solicitation	.	.	1	17	5	.	.	.	1	9	.	.	33
Operating Vehicle While Intoxicated - Endangering Person	31	31
Sexual Battery	.	.	.	3	15	.	.	.	2	.	7	.	27
Operating Vehicle Intoxicated Resulting in Serious Bodily Injury	.	.	.	10	5	6	3	.	24
Fraud	10	13	.	23
Child Exploitation	.	.	.	16	1	4	.	.	21
Dealing Possessing Look-Alike Substance	.	.	.	13	6	2	.	21
Assisting A Criminal	.	.	.	8	3	1	5	.	17
Invasion Of Privacy	4	13	.	17
Prisoner Poss. Dangerous Device/Material	.	.	12	4	16
Accident Fail To Stop Resulting in Serious Injury or Death	.	.	6	4	1	.	.	.	1	3	.	.	15
Possession Of Paraphernalia	5	9	.	14
Neglect Of A Dependent Resulting in Serious Injury	13	13
Possession Or Use Of Legend Drug	3	10	.	13
Check Fraud	.	.	.	9	2	1	.	12
Controlled Substance Registration	.	.	.	4	5	1	2	.	12
Identity Deception	.	.	.	1	9	2	.	12
Battery By Bodily Waste	.	.	.	3	8	11

INDIANA DEPARTMENT OF CORRECTION
ADULT OFFENDERS
by Most Serious Offense, Ranked
for February 2016
snapshot date: 02/01/2016

Most Serious Offense	Murder	FA	FB	FC	FD	F1	F2	F3	F4	F5	F6	HO	Total
Obliterating Handgun I.D.	.	.	.	10	1	.	.	11
Dealng A Sched I, Ii, Iii Control Subst	3	1	5	.	.	.	9
Opererating Vehicle - Schedule I Or II Control Substance	9	9
Child Seduction	.	.	.	3	1	4	.	.	8
Disarming A Law Enforcement Officer	.	.	.	3	5	.	.	8
Obstruction Of Justice	4	4	.	8
Battery To A Child Causing Death	.	7	7
Fail To Stop After Accident - Operating Vehicle Intoxicated	.	.	7	7
Promoting Prostitution Under Age 18	.	.	7	7
Vicarious Sexual Gratification	.	.	4	2	1	7
Welfare Fraud	.	.	.	7	7
Home Improvement Fraud Enhancement	.	.	.	5	1	6
Possession Of Dangerous Device	5	1	.	.	6
Prostitution	1	5	.	6
Criminal Trespass	4	1	.	5
Deal Substance Represented To Be Controlled Substance	5	5
Habitual Offender Substance Abuse	3	2	5
Handgun Violation	.	.	.	3	2	5
Pointing A Firearm	3	2	.	5
Possession Of Child Pornography	2	3	.	5
Human Sexual Trafficking	.	.	3	1	.	.	.	4
Involuntary Manslaughter	.	.	.	4	4
Dealing In A Schedule V Controlled Substance	.	.	3	3
Failure To Appear	3	.	3
Minor Passenger In Vehicle - Previous Conviction	.	.	.	3	3
Promoting Prostitution	.	.	.	3	3
Public Indecency	1	2	.	3
Security Fraud	.	.	3	3
Voyeurism	3	3
Aiding in Manufacture of Sch II Controlled Substance	2	.	2
Bribery	.	.	.	1	1	.	.	2
Conversion	2	.	2
Criminal Gang Activity	2	2
Dangerous Control Of A Handgun	2	.	.	2
Deal Sub Represented To Be Controlod Sub	2	.	2
Driving After Forfeiture	.	.	.	2	2
Driving While Intoxicated	2	2
Fail To Stop At An Accident/Sbi/Prior	2	2
Failure Of Sex Offender To Possess Id	2	2

INDIANA DEPARTMENT OF CORRECTION
ADULT OFFENDERS
by Most Serious Offense, Ranked
for February 2016
snapshot date: 02/01/2016

Most Serious Offense	Murder	FA	FB	FC	FD	F1	F2	F3	F4	F5	F6	HO	Total
Home Improvement Fraud Offenses	2	2
Illegal Possession Of Firearm By Felon	.	.	.	2	2
Mischief	.	.	.	1	1	2
Perform Sex Conduct In Presence Of Minor	2	.	2
Possession Of A Destructive Device	.	.	.	2	2
Removing, Damaging, Or Altering a VIN	.	.	.	1	1	.	.	2
Sale Of Unregistered Security	.	.	.	2	2
Animal Fighting Contest	1	1
Assisting Suicide	.	.	.	1	1
Battery On Law Enforcement	1	1
Causing Suicide	.	.	1	1
Cruelty To Animals	1	.	1
Dealing In A Sawed Off Shotgun	1	1
Dealing In Sched Iv Controlled Substance	1	1
Distribute Destructive Device To Minor	.	.	1	1
Driving While Suspended Resulting In Death	.	.	.	1	1
Fail To Return To Accident Resulting in Serious Injury	1	.	1
False Statement On Consent Form	1	1
Habitual Offender	1	1
Illegal Sex Offender Residency	1	1
Impersonating A Public Servant	1	.	1
Interference W/Medical Services	.	.	.	1	1
Money Laundering Over \$50,000	1	.	.	1
Official Misconduct	1	.	1
Operating Vehicle With Schedule I in Body - Causing Death	.	.	.	1	1
Perjury	1	.	1
Permitting Child To Possess Firearm	.	.	.	1	1
Possess Destructive Device Or Explosive	.	1	1
Possess Methamphetamine Without Pay Tax	1	1
Prescription Fraud	1	1
Service Provider Sex Miscond W/Detainee	.	.	1	1
Synthetic Identity Deception	1	1
Unlawful Possession Of Smoking Instrumen	1	1
Unlawful Transfer of Handgun Ownership	1	.	.	1
Violation Of 1935 Firearms Act	1	1
Violation Of Custody Order	1	1
Total	2,431	5,346	10,063	3,228	1,539	69	154	458	599	1,459	1,181	3	26,530

INDIANA DEPARTMENT OF CORRECTION
ADULT OFFENDERS
by Most Serious Offense
for February 2016
snapshot date: 02/01/2016

Branchville Correctional Facility													
Most Serious Offense	Murder	FA	FB	FC	FD	F1	F2	F3	F4	F5	F6	HO	Total
Accident Fail To Stop Reulting in Serious Injury or Death	.	.	.	1	1
Aggravated Battery	.	.	7	2	9
Aiding Inducing/Causing An Offense	.	.	10	3	1	1	.	.	15
Arson	.	1	9	10
Attempt To Commit Felony	.	10	9	.	1	.	.	2	2	3	1	.	28
Auto Theft, Receiving Stolen Auto Parts	.	.	.	2	3	3	.	8
Battery	.	.	4	21	1	.	.	1	.	17	5	.	49
Battery On Law Enforcement	1	1
Burglary	.	4	141	45	23	22	.	.	235
Carjacking	.	.	1	1
Carrying Handgun Without License	.	.	.	1	1
Conspiracy	.	4	19	2	1	.	3	3	.	2	1	.	35
Controlled Substance Registration	1	.	.	1
Criminal Confinement	.	.	10	2	1	.	.	4	.	4	.	.	21
Criminal Gang Activity	1	1
Criminal Recklessness	.	.	.	3	3	1	1	.	8
Criminal Trespass	1	1
Deal Substance Represented To Be Controlled Substance	1	1
Dealing In Cocaine Or Narcotic Drug	.	14	94	.	.	.	2	3	3	2	.	.	118
Dealing In Marijuana, Hash, or Hash Oil	.	.	.	1	1	.	.	2
Dealing In Methamphetamine	.	7	147	.	.	.	2	7	14	8	.	.	185
Dealing In Sched Iv Controlled Substance	1	1
Dealing In Schedule IV Controlled Substance	.	.	1	1	2
Dealing Possessing Look-Alike Substance	.	.	.	1	1	.	.	2
Dealng In a Schedule I, II, or III Controlled Substance	.	5	80	85
Domestic Battery	3	3	.	6
Escape	1	6	8	.	15
Fail To Stop After Accident - Operating Vehicle Intoxicated	.	.	1	1
Failure Of Sex Offender To Possess Id	1	1
Failure To Register As A Sex Offender	.	.	.	3	2	5	.	.	10
Failure To Return Lawful Detention/Escape	.	.	2	5	1	8
Firearm Within 1 Mile School Property Without License	.	.	.	2	2
Forgery,Counterfeiting,Application Fraud	.	.	.	24	2	.	26
Fraud	1	1	.	2
Fraud On A Financial Institution	.	.	.	1	1	.	.	2

INDIANA DEPARTMENT OF CORRECTION
ADULT OFFENDERS
by Most Serious Offense
for February 2016
snapshot date: 02/01/2016

Branchville Correctional Facility													
Most Serious Offense	Murder	FA	FB	FC	FD	F1	F2	F3	F4	F5	F6	HO	Total
Habitual Offender Substance Abuse	1	1	2
Handgun Violation	1	1
Handgun Violation (Felony Within 15 Yrs)	.	.	.	1	4	.	.	5
Home Improvement Fraud Enhancement	1	1
Identity Deception	1	1
Intimidation	.	.	.	3	2	4	2	.	11
Maintaining Common Nuisance	2	4	.	6
Murder	9	9
Neglect Of A Dependent	.	.	1	.	1	2
Non Support Of Dependent Child	.	.	.	10	3	13
Obliterating Handgun I.D.	.	.	.	1	1
Operate Vehicle After Suspended For Life	.	.	.	10	11	.	.	21
Operating Vehicle Intoxicated Resulting in Death	.	.	7	1	1	.	.	.	9
Operating Vehicle Intoxicated Resulting in Serious Bodily Injury	.	.	.	4	4
Operating Vehicle While Intoxicated-Previous Conviction	3	.	3
Operating Vehicle-Habit Traffic Violator	2	2
Opererating Vehicle While Intoxicated - Endangering Person	3	3
Opererating Vehicle While Intoxicated - Prior Conviction	4	.	4
Possess Chemical Reagents Or Precursors	.	.	.	6	6
Possess Of Precursors	3	3
Possession Of A Controlled Substance	.	.	.	5	5	10
Possession Of Cocaine Or Narcotic Drug	.	1	8	6	4	.	.	.	2	1	3	.	25
Possession Of Marijuana, Hash, Hash Oil	2	2
Possession Of Methamphetamine	.	.	20	6	6	.	.	1	2	5	13	.	53
Possession Of Syringes Or Needles	1	2	.	3
Prisoner Poss. Dangerous Device/Material	.	.	1	1
Reckless Homicide	.	.	.	5	5
Residential Entry	1	1
Resisting Law Enforcement	3	2	.	5
Robbery	.	3	31	12	.	.	.	10	.	6	.	.	62
Stalking	.	.	.	1	1	1	.	3
Strangulation	1	1	.	2
Theft,Receiving Stolen Property	29	1	14	.	44
Trafficking With An Inmate	.	.	.	1	1
Unlawful Firearm Poss By Serious Felon	.	.	31	8	.	.	.	39
Voluntary Manslaughter	.	3	2	5
Total	9	52	636	190	94	.	7	34	57	108	74	1	1,262

INDIANA DEPARTMENT OF CORRECTION
ADULT OFFENDERS
by Most Serious Offense
for February 2016
snapshot date: 02/01/2016

Correctional Industrial Facility												
Most Serious Offense	Murder	FA	FB	FC	FD	F1	F2	F3	F4	F5	F6	Total
Accident Fail To Stop Reulting in Serious Injury or Death	.	.	1	1
Aggravated Battery	.	.	40	3	.	.	.	43
Aiding Inducing/Causing An Offense	.	6	8	1	15
Arson	.	5	5	10
Attempt To Commit Felony	.	38	13	1	52
Auto Theft, Receiving Stolen Auto Parts	.	.	.	1	1	2
Battery	.	2	13	23	2	.	.	1	.	3	1	45
Burglary	.	32	157	18	.	.	4	.	4	.	.	215
Carjacking	.	.	6	6
Child Molesting	.	56	9	3	68
Conspiracy	.	22	12	1	.	.	1	1	.	.	.	37
Criminal Confinement	.	.	22	2	.	.	.	1	.	.	.	25
Criminal Deviate Conduct	.	2	4	6
Criminal Recklessness	.	.	.	2	1	3
Dealing In Cocaine Or Narcotic Drug	.	148	78	.	.	.	6	2	.	1	.	235
Dealing In Methamphetamine	.	49	49	.	.	.	4	.	1	.	.	103
Dealing In Schedule IV Controlled Substance	.	.	2	2
Dealng In a Schedule I, II, or III Controlled Substance	.	11	33	44
Escape	4	2	6
Fail To Stop After Accident - Operating Vehicle Intoxicated	.	.	1	1
Failure To Register As A Sex Offender	.	.	.	3	1	1	5
Failure To Return Lawful Detention/Escape	.	.	2	5	1	8
Firearm Within 1 Mile School Property Without License	.	.	.	2	2
Forgery,Counterfeiting,Application Fraud	.	.	.	17	1	18
Fraud On A Financial Institution	.	.	.	1	1	.	2
Handgun Violation	.	.	.	1	1
Handgun Violation (Felony Within 15 Yrs)	.	.	.	1	2	.	3
Home Improvement Fraud Enhancement	.	.	.	1	1
Human Sexual Trafficking	.	.	1	1
Incest	.	.	2	2
Intimidation	.	.	.	3	3
Kidnapping	.	10	10
Murder	105	105

INDIANA DEPARTMENT OF CORRECTION
ADULT OFFENDERS
by Most Serious Offense
for February 2016
snapshot date: 02/01/2016

Correctional Industrial Facility												
Most Serious Offense	Murder	FA	FB	FC	FD	F1	F2	F3	F4	F5	F6	Total
Neglect Of A Dependent	.	.	3	3
Neglect Of Dependent Resulting In Death	.	3	3
Non Support Of Dependent Child	.	.	.	2	2
Operate Vehicle After Suspended For Life	.	.	.	6	2	.	8
Operating Vehicle Intoxicated Resulting in Death	.	.	2	2
Possess Chemical Reagents Or Precursors	.	.	.	1	1
Possess Destructive Device Or Explosive	.	1	1
Possession Of A Controlled Substance	.	.	1	1	1	3
Possession Of Cocaine Or Narcotic Drug	.	9	7	1	1	.	.	.	1	.	3	22
Possession Of Marijuana, Hash, Hash Oil	1	1
Possession Of Methamphetamine	.	.	3	1	4
Prisoner Poss. Dangerous Device/Material	.	.	1	1
Promoting Prostitution	.	.	.	1	1
Promoting Prostitution Under Age 18	.	.	1	1
Rape	.	6	7	13
Reckless Homicide	.	.	.	1	1
Residential Entry	1	1
Resisting Law Enforcement	1	1
Robbery	.	24	113	16	.	.	1	9	.	1	.	164
Sexual Misconduct With A Minor	.	.	11	11
Stalking	.	.	.	1	1
Theft,Receiving Stolen Property	.	.	.	1	6	2	9
Trafficking With An Inmate	.	.	.	2	2
Unlawful Firearm Poss By Serious Felon	.	.	42	42
Voluntary Manslaughter	.	37	4	41
Total	105	461	653	120	16	.	16	17	6	14	11	1,419

INDIANA DEPARTMENT OF CORRECTION
ADULT OFFENDERS
by Most Serious Offense
for February 2016
snapshot date: 02/01/2016

Chain O'Lakes Correctional Facility												
Most Serious Offense	Murder	FA	FB	FC	FD	F1	F2	F3	F4	F5	F6	Total
Aiding Inducing/Causing An Offense	.	.	2	2
Arson	.	.	1	1
Attempt To Commit Felony	.	.	1	1	1	1	.	4
Auto Theft, Receiving Stolen Auto Parts	2	2
Burglary	.	.	7	6	1	3	.	17
Carrying Handgun Without License	.	.	.	1	1
Conspiracy	.	.	1	1
Corrupt Business Influence	.	.	.	2	1	.	3
Dealing In Cocaine Or Narcotic Drug	.	4	7	1	.	12
Dealing In Methamphetamine	.	1	27	6	.	34
Dealing Possessing Look-Alike Substance	1	.	1
Dealing In a Schedule I, II, or III Controlled Substance	.	2	11	13
Forgery,Counterfeiting,Application Fraud	.	.	.	1	1
Handgun Violation (Felony Within 15 Yrs)	3	.	3
Intimidation	1	.	1
Non Support Of Dependent Child	.	.	.	1	1
Operate Vehicle After Suspended For Life	.	.	.	1	2	.	3
Operating Vehicle Intoxicated Resulting in Death	.	.	1	1
Operating Vehicle While Intoxicated-Previous Conviction	3	3
Possess Chemical Reagents Or Precursors	.	.	.	1	1
Possession Of Cocaine Or Narcotic Drug	.	2	.	1	3
Possession Of Marijuana, Hash, Hash Oil	1	1
Possession Of Methamphetamine	.	.	2	.	1	3
Robbery	.	.	6	1	.	.	.	1	.	.	.	8
Theft,Receiving Stolen Property	.	.	.	1	5	6
Unlawful Firearm Poss By Serious Felon	.	.	1	1
Total	.	9	67	17	13	.	.	1	1	19	.	127

INDIANA DEPARTMENT OF CORRECTION
ADULT OFFENDERS
by Most Serious Offense
for February 2016
snapshot date: 02/01/2016

Edinburgh Correctional Facility												
Most Serious Offense	Murder	FA	FB	FC	FD	F1	F2	F3	F4	F5	F6	Total
Arson	.	.	2	2
Attempt To Commit Felony	.	.	1	.	1	2
Auto Theft, Receiving Stolen Auto Parts	3	3
Burglary	.	.	18	12	5	6	.	41
Carrying Handgun Without License	.	.	.	1	1
Conspiracy	.	.	2	2
Criminal Recklessness	.	.	.	1	1
Dealing In A Sawed Off Shotgun	1	1
Dealing In Cocaine Or Narcotic Drug	.	9	36	2	2	.	49
Dealing In Marijuana, Hash, or Hash Oil	.	.	.	1	1
Dealing In Methamphetamine	.	.	22	1	4	.	27
Dealing In Schedule IV Controlled Substance	.	.	.	1	1
Dealing In a Schedule I, II, or III Controlled Substance	.	.	6	6
Firearm Within 1 Mile School Property Without License	.	.	.	1	1
Forgery,Counterfeiting,Application Fraud	.	.	.	8	1	9
Fraud	1	1
Handgun Violation (Felony Within 15 Yrs)	.	.	.	1	5	.	6
Identity Deception	1	1
Intimidation	1	1	2
Mischief	1	1
Non Support Of Dependent Child	.	.	.	2	3	5
Operate Vehicle After Suspended For Life	.	.	.	4	12	.	16
Operating Vehicle Intoxicated Resulting in Death	.	.	1	1
Operating Vehicle While Intoxicated-Previous Conviction	5	3	8
Operating Vehicle-Habit Traffic Violator	2	2
Opererating Vehicle While Intoxicated - Endangering Person	2	2
Opererating Vehicle While Intoxicated - Prior Conviction	3	3
Possess Of Precursors	1	1
Possession Of A Controlled Substance	.	.	.	1	4	5
Possession Of Cocaine Or Narcotic Drug	.	1	.	2	1	1	.	5
Possession Of Marijuana, Hash, Hash Oil	1	1	2
Possession Of Methamphetamine	.	2	1	2	2	3	2	12
Possession Of Syringes Or Needles	1	1

INDIANA DEPARTMENT OF CORRECTION
 ADULT OFFENDERS
 by Most Serious Offense
 for February 2016
 snapshot date: 02/01/2016

Edinburgh Correctional Facility												
Most Serious Offense	Murder	FA	FB	FC	FD	F1	F2	F3	F4	F5	F6	Total
Residential Entry	3	3
Resisting Law Enforcement	2	4	6
Robbery	.	.	3	3	.	.	.	2	.	1	.	9
Security Fraud	.	.	1	1
Theft,Receiving Stolen Property	11	10	21
Unlawful Firearm Poss By Serious Felon	.	.	8	8
Welfare Fraud	.	.	.	1	1
Total	.	12	101	41	39	.	.	2	8	34	33	270

INDIANA DEPARTMENT OF CORRECTION
ADULT OFFENDERS
by Most Serious Offense
for February 2016
snapshot date: 02/01/2016

Henryville Correctional Facility												
Most Serious Offense	Murder	FA	FB	FC	FD	F1	F2	F3	F4	F5	F6	Total
Aiding Inducing/Causing An Offense	.	.	1	1
Attempt To Commit Felony	.	1	1	2
Battery	1	.	1
Burglary	.	.	8	5	3	3	.	19
Check Fraud	1	1
Conspiracy	.	.	3	1	1	.	5
Criminal Gang Activity	1	1
Dealing In Cocaine Or Narcotic Drug	.	4	8	3	.	15
Dealing In Marijuana, Hash, or Hash Oil	.	.	.	1	1
Dealing In Methamphetamine	.	1	13	1	1	.	16
Dealing In a Schedule I, II, or III Controlled Substance	.	1	11	12
Forgery,Counterfeiting,Application Fraud	.	.	.	2	2
Habitual Offender Substance Abuse	1	1
Maintaining Common Nuisance	1	1
Non Support Of Dependent Child	.	.	.	3	1	1	.	5
Operate Vehicle After Suspended For Life	.	.	.	3	5	.	8
Operating Vehicle Intoxicated Resulting in Death	.	.	3	2	5
Operating Vehicle While Intoxicated-Previous Conviction	1	1
Operating Vehicle-Habit Traffic Violator	2	2
Pointing A Firearm	1	1
Possess Of Precursors	2	2
Possession Of Cocaine Or Narcotic Drug	.	.	.	1	1	1	3
Possession Of Marijuana, Hash, Hash Oil	3	3
Possession Of Methamphetamine	.	.	2	2	1	1	3	9
Possession Of Syringes Or Needles	2	2
Resisting Law Enforcement	1	1
Robbery	.	.	3	1	1	.	5
Theft,Receiving Stolen Property	4	2	6
Unlawful Possession Of Smoking Instrumen	1	1
Total	.	7	53	21	20	.	.	.	4	17	10	132

INDIANA DEPARTMENT OF CORRECTION
ADULT OFFENDERS
by Most Serious Offense
for February 2016
snapshot date: 02/01/2016

Heritage Trail Correctional Facility												
Most Serious Offense	Murder	FA	FB	FC	FD	F1	F2	F3	F4	F5	F6	Total
Aggravated Battery	.	.	2	2
Aiding Inducing/Causing An Offense	.	.	5	2	1	.	.	1	1	.	.	10
Aiding in Manufacture of Sch II Controlled Substance	1	1
Arson	.	.	2	2
Assisting A Criminal	.	.	.	2	1	1	2	6
Attempt To Commit Felony	.	.	4	3	1	.	.	1	.	1	1	11
Auto Theft, Receiving Stolen Auto Parts	.	.	.	1	10	11
Battery	.	.	1	18	6	.	.	1	.	34	7	67
Battery By Bodily Waste	1	1
Burglary	.	.	83	31	16	12	.	142
Carjacking	.	.	2	2
Carrying Handgun Without License	.	.	.	1	1
Conspiracy	.	1	7	1	.	1	1	11
Corrupt Business Influence	.	.	.	1	1
Criminal Confinement	.	.	3	1	.	.	.	1	.	3	.	8
Criminal Recklessness	.	.	.	2	2	2	.	6
Criminal Trespass	1	1
Dealing In Cocaine Or Narcotic Drug	.	1	55	1	.	.	4	1	4	4	.	70
Dealing In Marijuana, Hash, or Hash Oil	2	1	.	3
Dealing In Methamphetamine	.	2	41	3	2	.	48
Dealing In Schedule IV Controlled Substance	.	.	3	3	6
Dealing Possessing Look-Alike Substance	.	.	.	1	1
Dealng A Sched I, Ii, Iii Control Subst	1	.	.	.	1
Dealng In a Schedule I, II, or III Controlled Substance	.	.	27	27
Domestic Battery	8	12	20
Escape	1	13	14
Failure To Return Lawful Detention/Escape	.	.	.	1	6	7
Firearm Within 1 Mile School Property Without License	.	.	.	7	7
Forgery,Counterfeiting,Application Fraud	.	.	.	20	2	22
Fraud On A Financial Institution	.	.	.	3	1	.	4
Handgun Violation	1	1
Handgun Violation (Felony Within 15 Yrs)	.	.	.	2	18	.	20
Identity Deception	1	1
Intimidation	.	.	.	3	2	4	.	9

INDIANA DEPARTMENT OF CORRECTION
ADULT OFFENDERS
by Most Serious Offense
for February 2016
snapshot date: 02/01/2016

Heritage Trail Correctional Facility												
Most Serious Offense	Murder	FA	FB	FC	FD	F1	F2	F3	F4	F5	F6	Total
Invasion Of Privacy	1	2	3
Maintaining Common Nuisance	4	4
Minor Passenger In Vehicle - Previous Conviction	.	.	.	1	1
Neglect Of A Dependent	.	.	3	3	1	.	7
Non Support Of Dependent Child	.	.	.	8	3	11
Obliterating Handgun I.D.	.	.	.	1	1
Operate Vehicle After Suspended For Life	.	.	.	20	13	.	33
Operating Vehicle Intoxicated Resulting in Death	1	.	.	1
Operating Vehicle Intoxicated Resulting in Serious Bodily Injury	.	.	.	1	1
Operating Vehicle While Intoxicated-Previous Conviction	15	3	18
Operating Vehicle-Habit Traffic Violator	1	4	5
Opererating Vehicle - Schedule I Or II Control Substance	1	1
Opererating Vehicle While Intoxicated - Prior Conviction	5	5
Possess Chemical Reagents Or Precursors	.	.	.	2	2
Possess Of Precursors	1	1	2
Possession Of A Controlled Substance	.	.	.	4	4	8
Possession Of Cocaine Or Narcotic Drug	.	.	7	5	1	.	.	1	1	1	6	22
Possession Of Marijuana, Hash, Hash Oil	2	2
Possession Of Methamphetamine	.	.	3	5	4	2	4	18
Possession Of Syringes Or Needles	.	.	.	1	3	1	2	7
Reckless Homicide	.	.	.	1	1
Residential Entry	2	4	6
Resisting Law Enforcement	5	3	8
Robbery	.	.	18	7	.	.	.	13	.	6	.	44
Stalking	.	.	.	2	1	3
Strangulation	5	4	9
Theft,Receiving Stolen Property	35	29	64
Trafficking With An Inmate	.	.	.	1	2	.	3
Unlawful Firearm Poss By Serious Felon	.	.	10	9	.	.	19
Total	.	4	276	165	116	.	4	21	35	111	121	853

INDIANA DEPARTMENT OF CORRECTION
ADULT OFFENDERS
by Most Serious Offense
for February 2016
snapshot date: 02/01/2016

Indianapolis Re-Entry Facility												
Most Serious Offense	Murder	FA	FB	FC	FD	F1	F2	F3	F4	F5	F6	Total
Aggravated Battery	.	.	2	2
Aiding Inducing/Causing An Offense	.	.	1	1
Arson	.	1	1	2
Attempt To Commit Felony	.	7	5	1	13
Auto Theft, Receiving Stolen Auto Parts	.	.	.	1	1
Battery	.	.	3	8	11
Burglary	.	4	27	6	37
Carrying Handgun Without License	.	.	.	1	1
Conspiracy	.	2	1	3
Criminal Confinement	.	.	1	1	2
Dealing In Cocaine Or Narcotic Drug	.	32	46	78
Dealing In Methamphetamine	.	5	23	28
Dealing In a Schedule I, II, or III Controlled Substance	.	5	15	20
Forgery,Counterfeiting,Application Fraud	.	.	.	2	2
Murder	16	16
Operate Vehicle After Suspended For Life	.	.	.	5	1	.	6
Operating Vehicle Intoxicated Resulting in Death	.	.	4	4
Operating Vehicle Intoxicated Resulting in Serious Bodily Injury	1	.	1
Operating Vehicle While Intoxicated-Previous Conviction	1	1
Opererating Vehicle While Intoxicated - Endangering Person	1	1
Possession Of Cocaine Or Narcotic Drug	.	1	1	2	4
Possession Of Methamphetamine	.	.	2	2
Reckless Homicide	.	.	.	2	2
Resisting Law Enforcement	1	1
Robbery	.	4	18	3	25
Theft,Receiving Stolen Property	1	1
Unlawful Firearm Poss By Serious Felon	.	.	20	20
Voluntary Manslaughter	.	9	2	11
Total	16	70	172	32	3	2	1	296

INDIANA DEPARTMENT OF CORRECTION
ADULT OFFENDERS
by Most Serious Offense
for February 2016
snapshot date: 02/01/2016

Indiana State Prison												
Most Serious Offense	Murder	FA	FB	FC	FD	F1	F2	F3	F4	F5	F6	Total
Aggravated Battery	.	.	25	2	.	.	.	27
Aiding Inducing/Causing An Offense	.	4	5	1	10
Arson	.	2	2	4
Attempt To Commit Felony	.	100	16	.	.	7	1	.	.	1	.	125
Auto Theft, Receiving Stolen Auto Parts	.	.	.	2	2
Battery	.	7	5	13	1	.	.	1	.	4	1	32
Burglary	.	56	86	17	.	3	1	.	2	.	.	165
Carrying Handgun Without License	.	.	.	2	2
Check Fraud	.	.	.	1	1
Child Molesting	.	231	17	.	.	9	257
Conspiracy	.	14	4	1	19
Corrupt Business Influence	.	.	.	2	1	.	3
Criminal Confinement	.	.	20	20
Criminal Deviate Conduct	.	30	4	34
Criminal Recklessness	.	.	.	2	1	3
Dealing In Cocaine Or Narcotic Drug	.	134	53	.	.	.	1	.	2	2	.	192
Dealing In Marijuana, Hash, or Hash Oil	.	.	.	1	1
Dealing In Methamphetamine	.	24	28	1	.	.	53
Dealing In Schedule IV Controlled Substance	.	.	.	1	1
Dealing Possessing Look-Alike Substance	.	.	.	1	1
Dealng In a Schedule I, II, or III Controlled Substance	.	7	14	21
Domestic Battery	4	3	7
Escape	3	3
Failure To Register As A Sex Offender	.	.	.	1	1
Failure To Return Lawful Detention/Escape	.	.	3	3	4	10
Firearm Within 1 Mile School Property Without License	.	.	.	2	2
Forgery,Counterfeiting,Application Fraud	.	.	.	7	2	9
Fraud	1	1
Fraud On A Financial Institution	.	.	.	1	1
Handgun Violation (Felony Within 15 Yrs)	2	.	2
Human Sexual Trafficking	.	.	1	1
Incest	.	.	1	1
Intimidation	.	.	.	1	2	1	4

INDIANA DEPARTMENT OF CORRECTION
ADULT OFFENDERS
by Most Serious Offense
for February 2016
snapshot date: 02/01/2016

Indiana State Prison												
Most Serious Offense	Murder	FA	FB	FC	FD	F1	F2	F3	F4	F5	F6	Total
Involuntary Manslaughter	.	.	.	1	1
Kidnapping	.	20	20
Maintaining Common Nuisance	1	1	2
Murder	724	724
Neglect Of A Dependent	.	.	5	2	7
Neglect Of Dependent Resulting In Death	.	9	.	.	.	1	10
Non Support Of Dependent Child	.	.	.	1	1	2
Operate Vehicle After Suspended For Life	.	.	.	5	3	.	8
Operating Vehicle Intoxicated Resulting in Death	.	.	4	4
Operating Vehicle-Habit Traffic Violator	3	2	5
Opererating Vehicle - Schedule I Or II Control Substance	1	1
Possess Chemical Reagents Or Precursors	.	.	.	2	2
Possess Of Precursors	1	1
Possession Of A Controlled Substance	.	.	.	1	1
Possession Of Cocaine Or Narcotic Drug	.	12	4	4	2	1	.	23
Possession Of Marijuana, Hash, Hash Oil	1	1
Possession Of Methamphetamine	.	.	1	.	1	2	4
Prisoner Poss. Dangerous Device/Material	.	.	2	2
Rape	.	66	10	.	.	3	.	1	.	.	.	80
Residential Entry	1	1
Resisting Law Enforcement	.	.	3	.	2	1	6
Robbery	.	44	124	11	.	.	.	4	.	1	.	184
Sexual Misconduct With A Minor	.	1	10	1	12
Stalking	1	.	1
Strangulation	1	1
Theft,Receiving Stolen Property	11	4	15
Unlawful Firearm Poss By Serious Felon	.	.	27	3	.	.	30
Voluntary Manslaughter	.	72	5	77
Total	724	833	479	87	36	23	3	8	8	16	23	2,240

INDIANA DEPARTMENT OF CORRECTION
ADULT OFFENDERS
by Most Serious Offense
for February 2016
snapshot date: 02/01/2016

Indiana Women's Prison												
Most Serious Offense	Murder	FA	FB	FC	FD	F1	F2	F3	F4	F5	F6	Total
Accident Fail To Stop Reulting in Serious Injury or Death	.	.	.	1	1
Aggravated Battery	.	.	6	2	.	.	.	8
Aiding Inducing/Causing An Offense	.	5	1	.	1	7
Arson	.	1	5	1	.	.	7
Assisting A Criminal	.	.	.	2	2
Attempt To Commit Felony	.	10	3	.	3	16
Auto Theft, Receiving Stolen Auto Parts	.	.	.	1	1	4	6
Battery	.	2	2	5	8	4	21
Battery By Bodily Waste	2	2
Battery To A Child Causing Death	.	1	1
Burglary	.	2	23	6	6	2	.	39
Child Molesting	.	.	1	1
Conspiracy	.	8	6	1	.	.	.	2	1	.	.	18
Controlled Substance Registration	.	.	.	1	1
Corrupt Business Influence	.	.	.	2	1	.	3
Criminal Confinement	.	.	2	1	3
Criminal Recklessness	.	.	.	1	2	.	3
Criminal Trespass	1	1
Deal Substance Represented To Be Controlled Substance	1	1
Dealing In Cocaine Or Narcotic Drug	.	9	28	.	.	.	2	1	.	.	.	40
Dealing In Methamphetamine	.	16	28	.	.	.	2	1	3	3	.	53
Dealing In Schedule IV Controlled Substance	.	.	1	1	2
Dealng A Sched I, Ii, Iii Control Subst	1	1
Dealng In a Schedule I, II, or III Controlled Substance	.	10	23	33
Escape	3	3
Fail To Stop At An Accident/Sbi/Prior	1	1
Failure To Return Lawful Detention/Escape	3	3
Firearm Within 1 Mile School Property Without License	.	.	.	1	1
Forgery,Counterfeiting,Application Fraud	.	.	.	36	3	39
Fraud	1	1
Fraud On A Financial Institution	.	.	.	3	2	.	5
Handgun Violation	.	.	.	1	1
Handgun Violation (Felony Within 15 Yrs)	1	.	1

INDIANA DEPARTMENT OF CORRECTION
ADULT OFFENDERS
by Most Serious Offense
for February 2016
snapshot date: 02/01/2016

Indiana Women's Prison												
Most Serious Offense	Murder	FA	FB	FC	FD	F1	F2	F3	F4	F5	F6	Total
Interference W/Medical Services	.	.	.	1	1
Intimidation	.	.	.	1	1
Maintaining Common Nuisance	1	4	5
Murder	74	74
Neglect Of A Dependent	.	.	10	2	12
Neglect Of A Dependent Resulting in Serious Injury	1	.	.	.	1
Neglect Of Dependent Resulting In Death	.	14	14
Operate Vehicle After Suspended For Life	.	.	.	4	1	.	5
Operating Vehicle Intoxicated Resulting in Death	.	.	2	1	1	.	4
Operating Vehicle Intoxicated Resulting in Serious Bodily Injury	.	.	.	1	1	2
Operating Vehicle While Intoxicated-Previous Conviction	4	1	5
Operating Vehicle-Habit Traffic Violator	2	2
Opererating Vehicle - Schedule I Or II Control Substance	1	1
Opererating Vehicle While Intoxicated - Prior Conviction	3	3
Pointing A Firearm	1	1
Possess Of Precursors	1	1
Possession Of A Controlled Substance	.	.	.	3	8	11
Possession Of Child Pornography	1	1
Possession Of Cocaine Or Narcotic Drug	.	1	3	2	5	.	.	.	1	1	4	17
Possession Of Marijuana, Hash, Hash Oil	2	2
Possession Of Methamphetamine	.	.	4	3	12	2	21
Possession Of Paraphernalia	1	3	4
Possession Of Syringes Or Needles	.	.	.	1	1	1	3
Possession Or Use Of Legend Drug	2	2
Promoting Prostitution Under Age 18	.	.	2	2
Prostitution	1	1
Reckless Homicide	.	.	.	1	1	.	2
Residential Entry	1	1
Robbery	.	5	18	2	.	.	1	3	.	3	.	32
Sexual Misconduct With A Minor	.	.	.	1	1
Theft,Receiving Stolen Property	29	12	41
Trafficking With An Inmate	.	.	.	2	2
Unlawful Firearm Poss By Serious Felon	.	.	2	2
Violation Of Custody Order	1	1
Voluntary Manslaughter	.	6	1	7
Welfare Fraud	.	.	.	1	1
Total	74	90	171	89	82	.	6	10	12	26	51	611

INDIANA DEPARTMENT OF CORRECTION
ADULT OFFENDERS
by Most Serious Offense
for February 2016
snapshot date: 02/01/2016

Madison Correctional Facility												
Most Serious Offense	Murder	FA	FB	FC	FD	F1	F2	F3	F4	F5	F6	Total
Accident Fail To Stop Resulting in Serious Injury or Death	.	.	.	1	1	.	.	2
Aiding Inducing/Causing An Offense	.	.	5	1	1	.	7
Arson	.	1	1	2
Assisting A Criminal	2	2
Assisting Suicide	.	.	.	1	1
Attempt To Commit Felony	1	1	2
Auto Theft, Receiving Stolen Auto Parts	1	1	2
Battery	.	.	1	.	3	2	1	7
Battery By Bodily Waste	.	.	.	1	1
Burglary	.	1	22	10	4	2	.	39
Conspiracy	.	1	14	2	2	2	.	21
Controlled Substance Registration	.	.	.	1	1	2
Corrupt Business Influence	.	.	.	4	2	.	6
Criminal Recklessness	1	1
Dealing In Cocaine Or Narcotic Drug	.	9	53	.	.	.	1	1	8	6	.	78
Dealing In Methamphetamine	.	8	82	.	.	.	1	2	12	9	.	114
Dealing In Schedule IV Controlled Substance	.	.	2	3	5
Dealing Possessing Look-Alike Substance	2	.	2
Dealng In a Schedule I, II, or III Controlled Substance	.	4	72	1	.	77
Domestic Battery	1	1
False Statement On Consent Form	1	1
Forgery,Counterfeiting,Application Fraud	.	.	.	34	3	37
Fraud	2	2
Fraud On A Financial Institution	.	.	.	3	3
Intimidation	1	1	2
Maintaining Common Nuisance	4	4
Murder	2	2
Neglect Of A Dependent	.	.	1	3	2	1	1	8
Neglect Of Dependent Resulting In Death	.	1	1
Operate Vehicle After Suspended For Life	.	.	.	5	4	.	9
Operating Vehicle Intoxicated Resulting in Death	.	.	1	1
Operating Vehicle Intoxicated Resulting in Serious Bodily Injury	.	.	.	1	1
Operating Vehicle While Intoxicated-Previous Conviction	8	4	12

INDIANA DEPARTMENT OF CORRECTION
ADULT OFFENDERS
by Most Serious Offense
for February 2016
snapshot date: 02/01/2016

Madison Correctional Facility												
Most Serious Offense	Murder	FA	FB	FC	FD	F1	F2	F3	F4	F5	F6	Total
Operating Vehicle-Habit Traffic Violator	2	2
Possess Chemical Reagents Or Precursors	.	.	.	2	2
Possess Of Precursors	2	1	3
Possession Of A Controlled Substance	.	.	.	4	8	12
Possession Of Cocaine Or Narcotic Drug	.	1	8	4	4	1	7	25
Possession Of Methamphetamine	.	.	7	2	7	.	.	.	1	3	5	25
Possession Of Paraphernalia	1	1
Possession Of Syringes Or Needles	1	3	4
Possession Or Use Of Legend Drug	2	2
Residential Entry	1	1	2
Resisting Law Enforcement	1	.	1
Robbery	.	.	6	1	.	.	.	1	.	2	.	10
Theft,Receiving Stolen Property	.	.	.	1	24	12	37
Trafficking With An Inmate	.	.	.	2	1	.	3
Unlawful Firearm Poss By Serious Felon	.	.	1	1
Voluntary Manslaughter	.	2	2
Welfare Fraud	.	.	.	3	3
Total	2	28	276	89	72	.	2	4	28	42	47	590

INDIANA DEPARTMENT OF CORRECTION
ADULT OFFENDERS
by Most Serious Offense
for February 2016
snapshot date: 02/01/2016

Miami Correctional Facility												
Most Serious Offense	Murder	FA	FB	FC	FD	F1	F2	F3	F4	F5	F6	Total
Accident Fail To Stop Resulting in Serious Injury or Death	.	.	3	3
Aggravated Battery	.	.	80	15	.	.	.	95
Aiding Inducing/Causing An Offense	.	10	17	.	2	.	.	1	1	.	.	31
Arson	.	4	11	.	1	16
Assisting A Criminal	.	.	.	2	1	3
Attempt To Commit Felony	.	103	25	7	2	6	1	2	.	2	1	149
Auto Theft, Receiving Stolen Auto Parts	.	.	.	4	3	5	12
Battery	.	3	16	34	3	11	4	71
Battery To A Child Causing Death	.	2	2
Burglary	.	57	295	59	.	.	5	.	14	5	.	435
Carjacking	.	.	11	11
Carrying Handgun Without License	.	.	.	10	10
Causing Suicide	.	.	1	1
Check Fraud	1	1
Child Molesting	.	105	30	4	.	4	.	2	.	.	.	145
Conspiracy	.	28	19	1	.	.	5	.	.	1	.	54
Controlled Substance Registration	.	.	.	1	1
Corrupt Business Influence	.	.	.	1	1
Criminal Confinement	.	.	41	2	2	.	.	5	.	1	.	51
Criminal Deviate Conduct	.	5	5	10
Criminal Recklessness	.	.	.	6	2	1	9
Deal Sub Represented To Be Controlled Sub	1	1
Dealing In Cocaine Or Narcotic Drug	.	313	139	.	.	.	16	1	1	6	.	476
Dealing In Marijuana, Hash, or Hash Oil	1	.	1
Dealing In Methamphetamine	.	80	107	.	.	.	6	2	6	12	.	213
Dealing In Schedule IV Controlled Substance	.	.	1	2	3
Dealing Possessing Look-Alike Substance	.	.	.	1	1
Dealng In a Schedule I, II, or III Controlled Substance	.	25	64	89
Disarming A Law Enforcement Officer	1	.	1
Domestic Battery	4	2	6
Escape	3	3	6
Failure To Register As A Sex Offender	.	.	.	1	1	1	3
Failure To Return Lawful Detention/Escape	.	.	5	8	1	14

INDIANA DEPARTMENT OF CORRECTION
ADULT OFFENDERS
by Most Serious Offense
for February 2016
snapshot date: 02/01/2016

Miami Correctional Facility												
Most Serious Offense	Murder	FA	FB	FC	FD	F1	F2	F3	F4	F5	F6	Total
Firearm Within 1 Mile School Property Without License	.	.	.	4	4
Forgery,Counterfeiting,Application Fraud	.	.	.	31	1	2	34
Fraud	2	2
Fraud On A Financial Institution	.	.	.	3	3	.	6
Handgun Violation (Felony Within 15 Yrs)	.	.	.	1	10	.	11
Identity Deception	1	1
Incest	.	.	3	3
Intimidation	.	.	.	5	1	1	2	9
Invasion Of Privacy	1	1
Kidnapping	.	7	7
Maintaining Common Nuisance	1	1
Murder	146	146
Neglect Of A Dependent	.	.	9	1	10
Neglect Of A Dependent Resulting in Serious Injury	3	.	.	.	3
Neglect Of Dependent Resulting In Death	.	6	6
Non Support Of Dependent Child	.	.	.	1	2	3
Obliterating Handgun I.D.	.	.	.	3	3
Obstruction Of Justice	1	1
Operate Vehicle After Suspended For Life	.	.	.	14	7	.	21
Operating Vehicle Intoxicated Resulting in Death	.	.	9	1	1	.	11
Operating Vehicle Intoxicated Resulting in Serious Bodily Injury	.	.	.	1	2	3
Operating Vehicle While Intoxicated-Previous Conviction	9	1	10
Operating Vehicle-Habit Traffic Violator	3	2	5
Opererating Vehicle - Schedule I Or II Control Substance	2	2
Opererating Vehicle While Intoxicated - Endangering Person	4	4
Opererating Vehicle While Intoxicated - Prior Conviction	1	1
Pointing A Firearm	1	1
Possess Chemical Reagents Or Precursors	.	.	.	3	3
Possess Methamphetamine Without Pay Tax	1	1
Possess Of Precursors	2	2	4
Possession Of A Controlled Substance	.	.	.	6	4	10
Possession Of Cocaine Or Narcotic Drug	.	23	14	7	4	.	.	1	.	3	6	58
Possession Of Dangerous Device	2	.	.	2

INDIANA DEPARTMENT OF CORRECTION
ADULT OFFENDERS
by Most Serious Offense
for February 2016
snapshot date: 02/01/2016

Miami Correctional Facility												
Most Serious Offense	Murder	FA	FB	FC	FD	F1	F2	F3	F4	F5	F6	Total
Possession Of Marijuana, Hash, Hash Oil	3	1	4
Possession Of Methamphetamine	.	.	14	1	7	.	.	.	1	1	2	26
Possession Of Paraphernalia	1	1
Possession Of Syringes Or Needles	1	1
Prisoner Poss. Dangerous Device/Material	.	.	2	2
Promoting Prostitution	.	.	.	1	1
Rape	.	18	9	.	.	2	.	2	.	.	.	31
Reckless Homicide	.	.	.	3	1	.	4
Residential Entry	2	1	3
Resisting Law Enforcement	.	.	2	2	4	1	3	12
Robbery	.	56	300	27	.	.	4	27	.	3	.	417
Sexual Misconduct With A Minor	.	1	10	1	12
Stalking	.	.	1	4	5
Strangulation	1	1
Theft,Receiving Stolen Property	21	8	29
Trafficking With An Inmate	.	.	.	2	1	.	3
Unlawful Firearm Poss By Serious Felon	.	.	106	8	.	.	114
Voluntary Manslaughter	.	76	11	.	.	.	2	89
Total	146	922	1,360	265	100	12	39	61	33	76	53	3,067

INDIANA DEPARTMENT OF CORRECTION
ADULT OFFENDERS
by Most Serious Offense
for February 2016
snapshot date: 02/01/2016

New Castle Correctional Facility												
Most Serious Offense	Murder	FA	FB	FC	FD	F1	F2	F3	F4	F5	F6	Total
Aggravated Battery	.	.	14	2	.	.	.	16
Aiding Inducing/Causing An Offense	.	1	2	1	1	1	.	6
Arson	.	.	5	2	.	.	7
Assisting A Criminal	1	1
Attempt To Commit Felony	.	47	35	3	3	.	.	3	1	1	.	93
Auto Theft, Receiving Stolen Auto Parts	.	.	.	5	1	3	9
Battery	.	2	2	23	3	8	3	41
Bribery	.	.	.	1	1
Burglary	.	23	94	34	4	9	.	164
Carjacking	.	.	5	5
Check Fraud	.	.	.	1	1
Child Exploitation	.	.	.	16	1	4	.	21
Child Molesting	.	546	434	233	.	1	.	13	25	.	.	1,252
Child Seduction	.	.	.	3	1	4	.	8
Child Solicitation	.	.	1	17	5	.	.	.	1	8	.	32
Conspiracy	.	5	10	2	1	.	18
Corrupt Business Influence	.	.	.	3	3	.	6
Criminal Confinement	.	.	10	9	1	.	.	1	.	4	.	25
Criminal Deviate Conduct	.	40	96	136
Criminal Recklessness	.	.	.	1	1	1	3
Criminal Trespass	1	1
Cruelty To Animals	1	1
Dangerous Control Of A Handgun	1	.	1
Dealing In Cocaine Or Narcotic Drug	.	21	23	2	1	12	.	59
Dealing In Marijuana, Hash, or Hash Oil	2	2
Dealing In Methamphetamine	.	1	34	3	8	.	46
Dealng A Sched I, Ii, Iii Control Subst	1	.	.	1
Dealing In a Schedule I, II, or III Controlled Substance	.	5	21	1	.	27
Disarming A Law Enforcement Officer	1	.	1
Distribute Destructive Device To Minor	.	.	1	1
Domestic Battery	2	1	3
Escape	1	4	5
Fail To Stop After Accident - Operating Vehicle Intoxicated	.	.	1	1

INDIANA DEPARTMENT OF CORRECTION
ADULT OFFENDERS
by Most Serious Offense
for February 2016
snapshot date: 02/01/2016

New Castle Correctional Facility												
Most Serious Offense	Murder	FA	FB	FC	FD	F1	F2	F3	F4	F5	F6	Total
Failure To Register As A Sex Offender	.	.	.	12	1	9	2	24
Failure To Return Lawful Detention/Escape	1	1
Firearm Within 1 Mile School Property Without License	.	.	.	2	2
Forgery,Counterfeiting,Application Fraud	.	.	.	20	1	21
Fraud On A Financial Institution	.	.	.	2	2	.	4
Handgun Violation (Felony Within 15 Yrs)	.	.	.	2	8	.	10
Home Improvement Fraud Offenses	1	1
Human Sexual Trafficking	1	.	.	1
Illegal Sex Offender Residency	1	1
Incest	.	.	21	14	1	2	.	38
Intimidation	.	.	.	3	2	1	6
Invasion Of Privacy	1	1
Kidnapping	.	11	11
Maintaining Common Nuisance	2	1	3
Money Laundering Over \$50,000	1	.	1
Murder	101	101
Neglect Of A Dependent	.	.	2	2	2	6
Neglect Of Dependent Resulting In Death	.	1	1
Non Support Of Dependent Child	.	.	.	5	2	7
Official Misconduct	1	1
Operate Vehicle After Suspended For Life	.	.	.	8	6	.	14
Operating Vehicle Intoxicated Resulting in Death	.	.	5	5
Operating Vehicle Intoxicated Resulting in Serious Bodily Injury	1	1	.	2
Operating Vehicle While Intoxicated-Previous Conviction	8	3	11
Operating Vehicle-Habit Traffic Violator	4	2	6
Opererating Vehicle While Intoxicated - Endangering Person	2	2
Opererating Vehicle While Intoxicated - Prior Conviction	6	6
Perform Sex Conduct In Presence Of Minor	2	2
Possess Chemical Reagents Or Precursors	.	.	.	1	1
Possess Of Precursors	1	1	2
Possession Of A Controlled Substance	.	.	.	2	7	9
Possession Of Child Pornography	1	3	4
Possession Of Cocaine Or Narcotic Drug	.	1	4	1	4	8	18

INDIANA DEPARTMENT OF CORRECTION
ADULT OFFENDERS
by Most Serious Offense
for February 2016
snapshot date: 02/01/2016

New Castle Correctional Facility												
Most Serious Offense	Murder	FA	FB	FC	FD	F1	F2	F3	F4	F5	F6	Total
Possession Of Marijuana, Hash, Hash Oil	4	4
Possession Of Methamphetamine	.	1	1	2	3	3	10
Possession Of Paraphernalia	1	1
Possession Of Syringes Or Needles	.	.	.	1	1	1	3
Possession Or Use Of Legend Drug	1	3	4
Prisoner Poss. Dangerous Device/Material	.	.	3	3
Promoting Prostitution Under Age 18	.	.	3	3
Public Indecency	1	2	3
Rape	.	83	119	9	.	.	.	211
Reckless Homicide	.	.	.	1	1
Residential Entry	3	3	6
Resisting Law Enforcement	1	3	4
Robbery	.	21	77	12	.	.	.	1	.	3	.	114
Sexual Battery	.	.	.	3	14	.	.	.	2	.	6	25
Sexual Misconduct With A Minor	.	.	265	79	4	.	.	.	16	13	1	378
Stalking	1	.	1
Strangulation	2	1	3
Theft,Receiving Stolen Property	.	.	.	1	19	15	35
Trafficking With An Inmate	.	.	.	1	1
Unlawful Firearm Poss By Serious Felon	.	.	18	2	.	.	20
Vicarious Sexual Gratification	.	.	3	2	1	6
Violation Of 1935 Firearms Act	1	1
Voluntary Manslaughter	.	7	4	11
Voyeurism	2	2
Total	101	816	1,313	528	118	1	.	31	61	114	84	3,167

INDIANA DEPARTMENT OF CORRECTION
ADULT OFFENDERS
by Most Serious Offense
for February 2016
snapshot date: 02/01/2016

Pendleton Correctional Facility												
Most Serious Offense	Murder	FA	FB	FC	FD	F1	F2	F3	F4	F5	F6	Total
Aggravated Battery	.	.	15	2	.	.	.	17
Aiding Inducing/Causing An Offense	.	5	6	1	1	1	14
Arson	.	3	2	1	.	.	6
Attempt To Commit Felony	.	80	9	.	.	1	.	1	.	.	.	91
Auto Theft, Receiving Stolen Auto Parts	.	.	.	3	2	5
Battery	.	4	4	18	3	4	.	33
Battery To A Child Causing Death	.	2	2
Burglary	.	38	88	19	.	2	.	.	3	2	.	152
Carjacking	.	.	6	6
Child Molesting	.	216	13	3	.	5	237
Conspiracy	.	9	6	1	16
Corrupt Business Influence	1	.	1
Criminal Confinement	.	.	23	1	2	1	27
Criminal Deviate Conduct	.	37	4	41
Dealing In Cocaine Or Narcotic Drug	.	98	30	3	.	131
Dealing In Marijuana, Hash, or Hash Oil	1	1	2
Dealing In Methamphetamine	.	9	19	.	.	.	1	.	.	2	.	31
Dealing In Schedule IV Controlled Substance	.	.	1	1
Dealing In a Schedule I, II, or III Controlled Substance	.	5	9	14
Failure To Register As A Sex Offender	2	.	2
Failure To Return Lawful Detention/Escape	.	.	.	3	3
Firearm Within 1 Mile School Property Without License	.	.	.	1	1
Forgery,Counterfeiting,Application Fraud	.	.	.	9	9
Fraud On A Financial Institution	.	.	.	1	1	.	2
Handgun Violation (Felony Within 15 Yrs)	.	.	.	1	12	.	13
Home Improvement Fraud Enhancement	.	.	.	1	1
Incest	.	.	1	1
Intimidation	.	.	.	2	1	3
Kidnapping	.	14	14
Maintaining Common Nuisance	1	1
Murder	507	507
Neglect Of A Dependent	.	.	2	1	3
Neglect Of Dependent Resulting In Death	.	4	4

INDIANA DEPARTMENT OF CORRECTION
ADULT OFFENDERS
by Most Serious Offense
for February 2016
snapshot date: 02/01/2016

Pendleton Correctional Facility												
Most Serious Offense	Murder	FA	FB	FC	FD	F1	F2	F3	F4	F5	F6	Total
Non Support Of Dependent Child	.	.	.	3	1	4
Operate Vehicle After Suspended For Life	.	.	.	1	3	.	4
Operating Vehicle Intoxicated Resulting in Death	.	.	2	1	.	.	3
Operating Vehicle While Intoxicated-Previous Conviction	2	1	3
Operating Vehicle-Habit Traffic Violator	1	1
Opererating Vehicle While Intoxicated - Prior Conviction	1	1
Possess Of Precursors	1	1
Possession Of A Controlled Substance	1	1
Possession Of Cocaine Or Narcotic Drug	.	7	3	.	1	1	12
Possession Of Methamphetamine	.	.	1	1
Possession Of Syringes Or Needles	1	1
Prisoner Poss. Dangerous Device/Material	.	.	1	1
Rape	.	49	8	.	.	2	59
Residential Entry	1	1
Resisting Law Enforcement	.	.	1	1
Robbery	.	35	96	7	.	.	2	5	.	3	.	148
Sale Of Unregistered Security	.	.	.	1	1
Sexual Misconduct With A Minor	.	1	8	9
Stalking	1	1
Strangulation	2	2
Theft,Receiving Stolen Property	9	8	17
Trafficking With An Inmate	.	.	.	1	1
Unlawful Firearm Poss By Serious Felon	.	.	27	1	.	.	28
Voluntary Manslaughter	.	36	3	.	.	.	3	42
Total	507	652	388	77	25	11	6	8	6	36	18	1,734

INDIANA DEPARTMENT OF CORRECTION
ADULT OFFENDERS
by Most Serious Offense
for February 2016
snapshot date: 02/01/2016

Plainfield Correctional Facility												
Most Serious Offense	Murder	FA	FB	FC	FD	F1	F2	F3	F4	F5	F6	Total
Accident Fail To Stop Reulting in Serious Injury or Death	.	.	1	1	.	2
Aggravated Battery	.	.	26	4	.	.	.	30
Aiding Inducing/Causing An Offense	.	2	8	1	2	1	.	14
Aiding in Manufacture of Sch II Controlled Substance	1	1
Animal Fighting Contest	1	1
Arson	.	.	10	.	1	11
Attempt To Commit Felony	.	19	12	2	1	1	1	36
Auto Theft, Receiving Stolen Auto Parts	.	.	.	6	3	9	18
Battery	.	.	5	31	2	.	.	1	.	18	5	62
Battery By Bodily Waste	1	1
Battery To A Child Causing Death	.	1	1
Burglary	.	11	146	56	.	.	2	1	36	15	.	267
Carjacking	.	.	5	5
Carrying Handgun Without License	.	.	.	7	7
Check Fraud	.	.	.	2	2
Child Molesting	.	10	3	4	17
Conspiracy	.	6	13	1	1	3	.	24
Conversion	1	1
Corrupt Business Influence	.	.	.	5	3	.	8
Criminal Confinement	.	.	13	6	4	.	.	2	.	4	2	31
Criminal Recklessness	.	.	.	2	2	2	.	6
Deal Sub Represented To Be Controlled Sub	1	1
Dealing In A Schedule V Controlled Substance	.	.	1	1
Dealing In Cocaine Or Narcotic Drug	.	51	140	1	.	.	5	1	4	8	.	210
Dealing In Marijuana, Hash, or Hash Oil	.	.	.	1	1	2	1	5
Dealing In Methamphetamine	.	2	82	3	6	12	.	105
Dealing In Schedule IV Controlled Substance	.	.	3	1	2	.	6
Dealing Possessing Look-Alike Substance	.	.	.	1	1
Dealng A Sched I, Ii, Iii Control Subst	1	.	2	.	.	3
Dealng In a Schedule I, II, or III Controlled Substance	.	7	80	1	88
Domestic Battery	15	4	19
Driving After Forfeiture	.	.	.	1	1
Driving While Intoxicated	1	1

INDIANA DEPARTMENT OF CORRECTION
ADULT OFFENDERS
by Most Serious Offense
for February 2016
snapshot date: 02/01/2016

Plainfield Correctional Facility												
Most Serious Offense	Murder	FA	FB	FC	FD	F1	F2	F3	F4	F5	F6	Total
Escape	2	10	12
Failure To Register As A Sex Offender	.	.	.	8	4	7	1	20
Failure To Return Lawful Detention/Escape	.	.	.	7	4	11
Firearm Within 1 Mile School Property Without License	.	.	.	5	5
Forgery,Counterfeiting,Application Fraud	.	.	.	23	2	25
Fraud	1	1
Fraud On A Financial Institution	.	.	.	4	2	.	6
Handgun Violation	.	.	.	1	1
Handgun Violation (Felony Within 15 Yrs)	.	.	.	2	15	.	17
Home Improvement Fraud Enhancement	.	.	.	1	1
Identity Deception	1	1	2
Impersonating A Public Servant	1	1
Intimidation	.	.	.	8	3	2	6	19
Invasion Of Privacy	1	1	2
Kidnapping	.	3	1	.	.	1	5
Maintaining Common Nuisance	3	2	5
Murder	33	33
Neglect Of A Dependent	.	.	.	3	3
Neglect Of A Dependent Resulting in Serious Injury	1	.	.	.	1
Non Support Of Dependent Child	.	.	.	11	2	13
Obliterating Handgun I.D.	.	.	.	1	1
Operate Vehicle After Suspended For Life	.	.	.	28	10	.	38
Operating Vehicle Intoxicated Resulting in Death	.	.	3	2	1	.	.	6
Operating Vehicle Intoxicated Resulting in Serious Bodily Injury	2	2	4
Operating Vehicle While Intoxicated-Previous Conviction	12	2	14
Operating Vehicle With Schedule I in Body - Causing Death	.	.	.	1	1
Operating Vehicle-Habit Traffic Violator	1	2	3
Opererating Vehicle - Schedule I Or II Control Substance	1	1
Opererating Vehicle While Intoxicated - Endangering Person	6	6
Opererating Vehicle While Intoxicated - Prior Conviction	4	4
Permitting Child To Possess Firearm	.	.	.	1	1
Pointing A Firearm	1	1	2
Possess Chemical Reagents Or Precursors	.	.	.	2	1	.	3

INDIANA DEPARTMENT OF CORRECTION
ADULT OFFENDERS
by Most Serious Offense
for February 2016
snapshot date: 02/01/2016

Plainfield Correctional Facility												
Most Serious Offense	Murder	FA	FB	FC	FD	F1	F2	F3	F4	F5	F6	Total
Possess Of Precursors	3	1	4
Possession Of A Controlled Substance	.	.	.	11	3	14
Possession Of Cocaine Or Narcotic Drug	.	2	22	10	4	.	.	1	1	2	12	54
Possession Of Marijuana, Hash, Hash Oil	4	4
Possession Of Methamphetamine	.	1	10	5	.	.	.	2	.	2	2	22
Possession Of Paraphernalia	1	1
Possession Of Syringes Or Needles	3	1	4
Prisoner Poss. Dangerous Device/Material	.	.	.	1	1
Rape	.	1	2	3
Reckless Homicide	.	.	.	2	1	.	3
Residential Entry	1	5	6
Resisting Law Enforcement	.	.	.	2	6	3	11
Robbery	.	3	86	20	.	.	.	25	.	10	.	144
Security Fraud	.	.	2	2
Sexual Misconduct With A Minor	.	.	1	1
Stalking	.	.	1	4	4	.	9
Strangulation	2	5	7
Theft,Receiving Stolen Property	39	20	59
Trafficking With An Inmate	.	.	.	5	2	.	7
Unlawful Firearm Poss By Serious Felon	.	.	40	10	.	.	50
Voluntary Manslaughter	.	11	3	14
Total	33	130	718	295	136	.	8	43	63	134	113	1,673

INDIANA DEPARTMENT OF CORRECTION
ADULT OFFENDERS
by Most Serious Offense
for February 2016
snapshot date: 02/01/2016

Putnamville Correctional Facility												
Most Serious Offense	Murder	FA	FB	FC	FD	F1	F2	F3	F4	F5	F6	Total
Accident Fail To Stop Reulting in Serious Injury or Death	.	.	1	1	.	2
Aggravated Battery	.	.	23	5	.	.	.	28
Aiding Inducing/Causing An Offense	.	1	12	13
Arson	.	.	14	2	.	.	16
Attempt To Commit Felony	.	25	14	4	1	3	.	47
Auto Theft, Receiving Stolen Auto Parts	.	.	.	5	5	1	11	22
Battery	.	.	7	35	4	.	.	1	.	35	8	90
Battery By Bodily Waste	.	.	.	1	1	2
Bribery	1	.	1
Burglary	.	9	239	72	.	.	2	2	51	22	.	397
Carjacking	.	.	12	12
Carrying Handgun Without License	.	.	.	6	6
Check Fraud	.	.	.	2	1	3
Child Molesting	.	2	4	3	1	.	.	10
Conspiracy	.	9	23	3	.	.	1	.	.	1	.	37
Corrupt Business Influence	2	.	2
Criminal Confinement	.	.	23	9	2	.	.	3	.	4	2	43
Criminal Deviate Conduct	.	.	2	2
Criminal Recklessness	.	.	.	3	1	1	2	7
Dealing In Cocaine Or Narcotic Drug	.	62	215	.	.	.	13	5	10	4	.	309
Dealing In Marijuana, Hash, or Hash Oil	1	1	.	2
Dealing In Methamphetamine	.	9	132	.	.	.	9	6	7	9	.	172
Dealing In Schedule IV Controlled Substance	.	.	2	6	1	.	9
Dealing Possessing Look-Alike Substance	.	.	.	1	1	.	2
Dealng In a Schedule I, II, or III Controlled Substance	.	7	51	58
Domestic Battery	6	5	11
Driving After Forfeiture	.	.	.	1	1
Driving While Intoxicated	1	1
Driving While Suspended Resulting In Death	.	.	.	1	1
Escape	1	5	7	13
Failure To Register As A Sex Offender	.	.	.	6	1	17	2	26
Failure To Return Lawful Detention/Escape	.	.	.	10	4	14
Firearm Within 1 Mile School Property Without License	.	.	.	11	11

INDIANA DEPARTMENT OF CORRECTION
ADULT OFFENDERS
by Most Serious Offense
for February 2016
snapshot date: 02/01/2016

Putnamville Correctional Facility												
Most Serious Offense	Murder	FA	FB	FC	FD	F1	F2	F3	F4	F5	F6	Total
Forgery,Counterfeiting,Application Fraud	.	.	.	54	4	58
Fraud	1	1
Fraud On A Financial Institution	.	.	.	5	5	.	10
Handgun Violation (Felony Within 15 Yrs)	.	.	.	3	8	.	11
Home Improvement Fraud Enhancement	.	.	.	1	1
Identity Deception	.	.	.	1	1	2
Intimidation	.	.	.	4	3	5	5	17
Invasion Of Privacy	1	1
Involuntary Manslaughter	.	.	.	1	1
Kidnapping	.	2	1	.	3
Maintaining Common Nuisance	3	3	6
Murder	23	23
Neglect Of A Dependent	.	.	6	3	1	1	1	12
Non Support Of Dependent Child	.	.	.	10	1	11
Obliterating Handgun I.D.	.	.	.	3	1	.	4
Obstruction Of Justice	1	1
Operate Vehicle After Suspended For Life	.	.	.	25	24	.	49
Operating Vehicle Intoxicated Resulting in Death	.	.	5	3	1	1	.	10
Operating Vehicle Intoxicated Resulting in Serious Bodily Injury	.	.	.	1	1	1	.	3
Operating Vehicle While Intoxicated-Previous Conviction	16	1	17
Operating Vehicle-Habit Traffic Violator	6	2	8
Opererating Vehicle - Schedule I Or II Control Substance	1	1
Opererating Vehicle While Intoxicated - Endangering Person	4	4
Opererating Vehicle While Intoxicated - Prior Conviction	8	8
Possess Chemical Reagents Or Precursors	.	.	.	2	2
Possess Of Precursors	2	2
Possession Of A Controlled Substance	.	.	.	4	11	15
Possession Of A Destructive Device	.	.	.	1	1
Possession Of Cocaine Or Narcotic Drug	.	2	8	13	7	.	.	.	1	4	2	37
Possession Of Dangerous Device	1	.	.	1
Possession Of Marijuana, Hash, Hash Oil	3	1	4
Possession Of Methamphetamine	.	.	11	7	6	.	.	2	.	3	9	38
Possession Of Paraphernalia	1	2	3

INDIANA DEPARTMENT OF CORRECTION
ADULT OFFENDERS
by Most Serious Offense
for February 2016
snapshot date: 02/01/2016

Putnamville Correctional Facility												
Most Serious Offense	Murder	FA	FB	FC	FD	F1	F2	F3	F4	F5	F6	Total
Possession Of Syringes Or Needles	.	.	.	1	3	1	.	5
Possession Or Use Of Legend Drug	1	1
Prisoner Poss. Dangerous Device/Material	.	.	1	1	2
Rape	.	1	1	2
Reckless Homicide	.	.	.	9	1	.	10
Removing, Damaging, Or Altering a VIN	1	.	1
Residential Entry	2	5	7
Resisting Law Enforcement	3	1	9	13
Robbery	.	9	145	32	.	.	4	40	.	15	.	245
Sale Of Unregistered Security	.	.	.	1	1
Sexual Misconduct With A Minor	1	.	.	1
Stalking	.	.	.	3	1	.	.	4
Strangulation	5	4	9
Synthetic Identity Deception	1	1
Theft,Receiving Stolen Property	41	1	34	76
Trafficking With An Inmate	.	.	.	1	1
Unlawful Firearm Poss By Serious Felon	.	.	109	23	.	.	132
Voluntary Manslaughter	.	15	4	.	.	.	1	20
Welfare Fraud	.	.	.	1	1
Total	23	153	1,064	369	150	.	30	64	100	183	131	2,267

INDIANA DEPARTMENT OF CORRECTION
ADULT OFFENDERS
by Most Serious Offense
for February 2016
snapshot date: 02/01/2016

Reception Diagnostic Center												
Most Serious Offense	Murder	FA	FB	FC	FD	F1	F2	F3	F4	F5	F6	Total
Aggravated Battery	.	.	3	3	.	.	.	6
Aiding Inducing/Causing An Offense	.	1	1	1	1	.	.	1	.	2	1	8
Assisting A Criminal	.	.	.	1	1
Attempt To Commit Felony	.	.	2	.	1	1	4
Auto Theft, Receiving Stolen Auto Parts	2	2	4
Battery	.	.	.	3	2	.	1	1	.	6	2	15
Burglary	.	.	22	5	.	1	1	.	6	10	.	45
Child Molesting	.	4	3	7	.	.	.	1	1	.	.	16
Child Solicitation	1	.	1
Conspiracy	.	.	1	1	1	.	3
Corrupt Business Influence	.	.	.	1	1	.	2
Criminal Confinement	.	.	1	2	.	3
Criminal Deviate Conduct	.	1	1	2
Criminal Recklessness	.	.	.	1	3	1	5
Deal Substance Represented To Be Controlled Substance	2	2
Dealing In Cocaine Or Narcotic Drug	.	1	13	.	.	.	3	.	3	8	.	28
Dealing In Marijuana, Hash, or Hash Oil	.	.	.	1	1
Dealing In Methamphetamine	.	1	11	.	.	.	2	.	3	6	.	23
Dealing In a Schedule I, II, or III Controlled Substance	.	.	7	7
Domestic Battery	2	2	4
Escape	2	3	5
Failure To Register As A Sex Offender	.	.	.	2	1	3	.	6
Failure To Return Lawful Detention/Escape	.	.	.	1	1	2
Forgery,Counterfeiting,Application Fraud	.	.	.	11	3	14
Fraud	1	1	2
Fraud On A Financial Institution	2	.	2
Handgun Violation (Felony Within 15 Yrs)	.	.	.	1	4	.	5
Home Improvement Fraud Offenses	1	1
Identity Deception	1	1
Intimidation	.	.	.	1	3	1	5
Invasion Of Privacy	1	1
Maintaining Common Nuisance	1	1	2
Murder	5	5
Neglect Of A Dependent Resulting in Serious Injury	1	.	.	.	1
Non Support Of Dependent Child	.	.	.	7	1	8

INDIANA DEPARTMENT OF CORRECTION
ADULT OFFENDERS
by Most Serious Offense
for February 2016
snapshot date: 02/01/2016

Reception Diagnostic Center												
Most Serious Offense	Murder	FA	FB	FC	FD	F1	F2	F3	F4	F5	F6	Total
Operate Vehicle After Suspended For Life	.	.	.	4	12	.	16
Operating Vehicle While Intoxicated-Previous Conviction	6	2	8
Operating Vehicle-Habit Traffic Violator	2	1	3
Opererating Vehicle While Intoxicated - Endangering Person	1	1
Possess Chemical Reagents Or Precursors	2	.	2
Possess Of Precursors	1	1
Possession Of A Controlled Substance	.	.	.	1	5	6
Possession Of Cocaine Or Narcotic Drug	.	.	2	1	2	1	1	7
Possession Of Dangerous Device	2	.	.	2
Possession Of Marijuana, Hash, Hash Oil	6	6
Possession Of Methamphetamine	.	.	.	3	4	2	6	15
Possession Of Paraphernalia	1	1
Possession Of Syringes Or Needles	2	2
Rape	.	1	3	.	.	.	4
Reckless Homicide	1	.	1
Residential Entry	2	2	4
Resisting Law Enforcement	4	1	5
Robbery	.	.	5	1	.	.	1	11	.	7	.	25
Sexual Battery	1	1	2
Sexual Misconduct With A Minor	.	.	1	1	1	.	.	3
Stalking	1	.	1
Theft,Receiving Stolen Property	14	4	18
Unlawful Firearm Poss By Serious Felon	.	.	2	3	.	.	5
Unlawful Transfer of Handgun Ownership	1	.	1
Vicarious Sexual Gratification	.	.	1	1
Voluntary Manslaughter	.	1	2	3
Voyeurism	1	1
Total	5	10	76	54	69	1	10	21	20	81	37	384

INDIANA DEPARTMENT OF CORRECTION
ADULT OFFENDERS
by Most Serious Offense
for February 2016
snapshot date: 02/01/2016

Rockville Correctional Facility												
Most Serious Offense	Murder	FA	FB	FC	FD	F1	F2	F3	F4	F5	F6	Total
Aggravated Battery	.	.	9	1	.	.	.	10
Aiding Inducing/Causing An Offense	.	4	3	1	2	.	.	.	1	3	.	14
Arson	.	1	5	1	.	.	7
Assisting A Criminal	1	1
Attempt To Commit Felony	.	13	2	.	.	1	2	.	.	3	.	21
Auto Theft, Receiving Stolen Auto Parts	7	2	9
Battery	.	1	2	11	2	.	.	2	.	14	3	35
Burglary	.	3	57	13	.	1	.	1	12	7	.	94
Carjacking	.	.	3	3
Carrying Handgun Without License	.	.	.	1	1
Check Fraud	.	.	.	2	2
Child Molesting	.	22	9	5	36
Conspiracy	.	10	17	1	2	3	.	33
Controlled Substance Registration	2	1	3
Corrupt Business Influence	.	.	.	4	2	.	6
Criminal Confinement	.	.	3	1	.	.	.	4
Criminal Deviate Conduct	.	4	1	5
Criminal Recklessness	.	.	.	1	4	1	.	6
Criminal Trespass	1	1
Dealing In A Schedule V Controlled Substance	.	.	1	1
Dealing In Cocaine Or Narcotic Drug	.	32	57	.	.	.	2	3	8	10	.	112
Dealing In Marijuana, Hash, or Hash Oil	.	.	.	1	2	1	4
Dealing In Methamphetamine	.	25	66	.	.	.	4	5	11	16	.	127
Dealing In Schedule IV Controlled Substance	.	.	4	3	4	.	11
Dealing Possessing Look-Alike Substance	.	.	.	1	1
Dealng A Sched I, II, III Control Subst	1	.	1	.	.	2
Dealng In a Schedule I, II, or III Controlled Substance	.	13	72	85
Domestic Battery	2	2
Escape	5	17	22
Fail To Stop At An Accident/Sbi/Prior	1	1
Failure To Register As A Sex Offender	.	.	.	1	1	2	1	5
Failure To Return Lawful Detention/Escape	.	.	.	3	4	7
Forgery,Counterfeiting,Application Fraud	.	.	.	48	2	50

INDIANA DEPARTMENT OF CORRECTION
ADULT OFFENDERS
by Most Serious Offense
for February 2016
snapshot date: 02/01/2016

Rockville Correctional Facility												
Most Serious Offense	Murder	FA	FB	FC	FD	F1	F2	F3	F4	F5	F6	Total
Fraud	3	5	8
Fraud On A Financial Institution	.	.	.	3	3
Handgun Violation (Felony Within 15 Yrs)	3	.	3
Human Sexual Trafficking	.	.	1	1
Identity Deception	1	1
Incest	.	.	1	1	2
Intimidation	3	3
Invasion Of Privacy	1	1
Kidnapping	1	.	1	.	2
Maintaining Common Nuisance	6	6	12
Murder	48	48
Neglect Of A Dependent	.	.	15	4	3	3	25
Neglect Of A Dependent Resulting in Serious Injury	4	.	.	.	4
Neglect Of Dependent Resulting In Death	.	14	14
Non Support Of Dependent Child	.	.	.	1	2	3
Obstruction Of Justice	1	1	2
Operate Vehicle After Suspended For Life	.	.	.	7	3	.	10
Operating Vehicle Intoxicated Resulting in Death	.	.	5	3	.	.	8
Operating Vehicle Intoxicated Resulting in Serious Bodily Injury	1	.	1
Operating Vehicle While Intoxicated-Previous Conviction	7	1	2	10
Operating Vehicle-Habit Traffic Violator	2	2	4
Opererating Vehicle While Intoxicated - Endangering Person	4	4
Opererating Vehicle While Intoxicated - Prior Conviction	3	3
Possess Chemical Reagents Or Precursors	.	.	.	3	3
Possess Of Precursors	2	2	4
Possession Of A Controlled Substance	.	.	1	4	14	1	20
Possession Of Cocaine Or Narcotic Drug	.	2	9	6	5	.	.	1	.	3	10	36
Possession Of Methamphetamine	.	1	6	3	5	3	4	22
Possession Of Syringes Or Needles	4	1	1	6
Possession Or Use Of Legend Drug	1	1	2
Prescription Fraud	1	1
Promoting Prostitution	.	.	.	1	1
Promoting Prostitution Under Age 18	.	.	1	1

INDIANA DEPARTMENT OF CORRECTION
ADULT OFFENDERS
by Most Serious Offense
for February 2016
snapshot date: 02/01/2016

Rockville Correctional Facility												
Most Serious Offense	Murder	FA	FB	FC	FD	F1	F2	F3	F4	F5	F6	Total
Prostitution	1	4	5
Reckless Homicide	.	.	.	3	3
Residential Entry	1	2	3
Resisting Law Enforcement	1	2	3
Robbery	.	5	18	5	.	.	.	7	.	5	.	40
Service Provider Sex Miscond W/Detainee	.	.	1	1
Sexual Misconduct With A Minor	.	.	11	11
Stalking	1	1
Strangulation	1	1	2
Theft,Receiving Stolen Property	.	.	.	1	49	35	85
Trafficking With An Inmate	.	.	.	2	2	.	4
Unlawful Firearm Poss By Serious Felon	.	.	6	6
Voluntary Manslaughter	.	16	2	.	.	.	1	19
Welfare Fraud	.	.	.	1	1
Total	48	166	388	140	144	2	10	27	39	93	116	1,173

INDIANA DEPARTMENT OF CORRECTION
ADULT OFFENDERS
by Most Serious Offense
for February 2016
snapshot date: 02/01/2016

South Bend Community Re-Entry Center												
Most Serious Offense	Murder	FA	FB	FC	FD	F1	F2	F3	F4	F5	F6	Total
Accident Fail To Stop Resulting in Serious Injury or Death	1	1
Aggravated Battery	.	.	3	3
Arson	.	.	1	1
Attempt To Commit Felony	.	2	3	5
Auto Theft, Receiving Stolen Auto Parts	.	.	.	1	1	2
Battery	.	.	1	2	3
Burglary	.	.	9	3	12
Carrying Handgun Without License	.	.	.	1	1
Conspiracy	.	1	3	1	.	5
Criminal Confinement	1	.	1
Dealing In Cocaine Or Narcotic Drug	.	3	19	22
Dealing In Methamphetamine	.	.	19	1	.	20
Dealing In a Schedule I, II, or III Controlled Substance	.	.	5	5
Fail To Return To Accident Resulting in Serious Injury	1	1
Firearm Within 1 Mile School Property Without License	.	.	.	4	4
Forgery,Counterfeiting,Application Fraud	.	.	.	2	2
Fraud On A Financial Institution	.	.	.	1	1
Handgun Violation (Felony Within 15 Yrs)	3	.	3
Illegal Possession Of Firearm By Felon	.	.	.	1	1
Intimidation	1	1
Murder	6	6
Non Support Of Dependent Child	.	.	.	1	1
Obstruction Of Justice	1	1
Operate Vehicle After Suspended For Life	.	.	.	6	2	.	8
Operating Vehicle Intoxicated Resulting in Death	.	.	1	1	2
Operating Vehicle While Intoxicated-Previous Conviction	2	2
Opererating Vehicle - Schedule I Or II Control Substance	1	1
Opererating Vehicle While Intoxicated - Endangering Person	1	1
Possess Chemical Reagents Or Precursors	.	.	.	1	1
Possess Of Precursors	1	1
Possession Of A Controlled Substance	1	1
Possession Of A Destructive Device	.	.	.	1	1
Possession Of Cocaine Or Narcotic Drug	.	2	2
Possession Of Marijuana, Hash, Hash Oil	2	2
Possession Of Methamphetamine	.	.	2	.	2	1	1	6
Reckless Homicide	.	.	.	1	1
Residential Entry	1	1
Resisting Law Enforcement	1	1	2
Robbery	.	2	13	3	18
Theft,Receiving Stolen Property	5	3	8
Unlawful Firearm Poss By Serious Felon	.	.	2	2
Voluntary Manslaughter	.	3	3
Total	6	13	81	29	20	9	7	165

INDIANA DEPARTMENT OF CORRECTION
ADULT OFFENDERS
by Most Serious Offense
for February 2016
snapshot date: 02/01/2016

Wabash Valley Correctional Facility												
Most Serious Offense	Murder	FA	FB	FC	FD	F1	F2	F3	F4	F5	F6	Total
Aggravated Battery	.	.	23	4	.	.	.	27
Aiding Inducing/Causing An Offense	.	13	3	.	1	1	18
Arson	.	2	7	9
Assisting A Criminal	.	.	.	1	1
Attempt To Commit Felony	.	104	14	3	.	5	1	127
Auto Theft, Receiving Stolen Auto Parts	.	.	.	1	2	3
Battery	.	4	1	12	2	.	.	1	.	2	.	22
Battery By Bodily Waste	2	2
Burglary	.	43	102	13	.	.	1	.	6	5	.	170
Carjacking	.	.	11	11
Carrying Handgun Without License	.	.	.	1	1
Child Molesting	.	250	17	2	.	4	273
Conspiracy	.	9	7	1	.	1	1	.	1	2	.	22
Controlled Substance Registration	1	1
Corrupt Business Influence	1	.	1
Criminal Confinement	.	.	17	3	20
Criminal Deviate Conduct	.	24	2	26
Criminal Recklessness	.	.	.	4	1	2	1	8
Dangerous Control Of A Handgun	1	.	1
Dealing In Cocaine Or Narcotic Drug	.	67	33	1	2	.	.	103
Dealing In Marijuana, Hash, or Hash Oil	.	.	.	1	1	.	2
Dealing In Methamphetamine	.	25	36	1	2	3	.	67
Dealing In Schedule IV Controlled Substance	.	.	1	1
Dealing In a Schedule I, II, or III Controlled Substance	.	4	9	13
Fail To Stop After Accident - Operating Vehicle Intoxicated	.	.	1	1
Failure To Return Lawful Detention/Escape	.	.	2	1	3
Firearm Within 1 Mile School Property Without License	.	.	.	1	1
Forgery,Counterfeiting,Application Fraud	.	.	.	10	2	12
Handgun Violation (Felony Within 15 Yrs)	.	.	.	1	2	.	3
Incest	.	.	.	1	1
Intimidation	.	.	.	1	1
Invasion Of Privacy	1	1
Kidnapping	.	24	24

INDIANA DEPARTMENT OF CORRECTION
ADULT OFFENDERS
by Most Serious Offense
for February 2016
snapshot date: 02/01/2016

Wabash Valley Correctional Facility												
Most Serious Offense	Murder	FA	FB	FC	FD	F1	F2	F3	F4	F5	F6	Total
Murder	582	582
Neglect Of Dependent Resulting In Death	.	13	13
Non Support Of Dependent Child	.	.	.	4	4
Operate Vehicle After Suspended For Life	.	.	.	7	2	.	9
Operating Vehicle Intoxicated Resulting in Death	.	.	6	6
Operating Vehicle While Intoxicated-Previous Conviction	4	4
Operating Vehicle-Habit Traffic Violator	1	1
Opererating Vehicle While Intoxicated - Prior Conviction	3	3
Possess Chemical Reagents Or Precursors	.	.	.	1	1
Possess Of Precursors	1	1
Possession Of A Controlled Substance	1	1
Possession Of Cocaine Or Narcotic Drug	.	3	2	1	.	6
Possession Of Methamphetamine	.	1	1	.	4	1	4	11
Prisoner Poss. Dangerous Device/Material	.	.	1	2	3
Rape	.	50	9	.	.	8	.	1	.	.	.	68
Removing, Damaging, Or Altering a VIN	.	.	.	1	1
Residential Entry	1	1
Resisting Law Enforcement	.	.	1	1
Robbery	.	48	101	6	.	.	1	9	.	.	.	165
Sexual Misconduct With A Minor	.	1	9	10
Strangulation	1	1
Theft,Receiving Stolen Property	.	.	.	2	6	7	15
Unlawful Firearm Poss By Serious Felon	.	.	26	26
Voluntary Manslaughter	.	39	2	41
Total	582	724	444	80	23	19	4	17	11	23	23	1,950

INDIANA DEPARTMENT OF CORRECTION
ADULT OFFENDERS
by Most Serious Offense
for February 2016
snapshot date: 02/01/2016

Westville Correctional Facility													
Most Serious Offense	Murder	FA	FB	FC	FD	F1	F2	F3	F4	F5	F6	HO	Total
Accident Fail To Stop Reulting in Serious Injury or Death	1	.	.	1
Aggravated Battery	.	.	40	8	48
Aiding Inducing/Causing An Offense	.	.	19	4	2	.	.	5	1	8	.	.	39
Arson	.	.	13	2	.	.	.	15
Attempt To Commit Felony	.	20	29	9	1	.	.	4	1	3	2	.	69
Auto Theft, Receiving Stolen Auto Parts	.	.	.	4	4	10	.	18
Battery	.	.	5	48	6	.	.	3	.	52	11	.	125
Battery By Bodily Waste	.	.	.	1	1	2
Battery To A Child Causing Death	.	1	1
Burglary	.	7	273	107	.	.	1	1	49	40	.	.	478
Carjacking	.	.	4	4
Carrying Handgun Without License	.	.	.	7	7
Check Fraud	.	.	.	1	1
Child Molesting	.	3	2	3	8
Conspiracy	.	8	23	2	.	.	.	1	1	1	1	.	37
Controlled Substance Registration	.	.	.	1	1	1	.	3
Conversion	1	.	1
Corrupt Business Influence	.	.	.	12	1	.	.	13
Criminal Confinement	.	.	22	11	3	.	.	3	.	3	1	.	43
Criminal Deviate Conduct	.	2	2	4
Criminal Recklessness	.	.	.	4	5	4	2	.	15
Deal Substance Represented To Be Controlled Substance	1	1
Dealing In A Schedule V Controlled Substance	.	.	1	1
Dealing In Cocaine Or Narcotic Drug	.	58	253	.	.	.	1	6	12	19	.	.	349
Dealing In Marijuana, Hash, or Hash Oil	.	.	.	6	1	7
Dealing In Methamphetamine	.	19	175	.	.	.	4	9	24	40	.	.	271
Dealing In Schedule IV Controlled Substance	.	.	3	4	7
Dealing Possessing Look-Alike Substance	.	.	.	5	1	2	.	8
Dealng A Sched I, Ii, Iii Control Subst	1	.	.	.	1
Dealng In a Schedule I, II, or III Controlled Substance	.	6	107	113
Disarming A Law Enforcement Officer	.	.	.	3	3	.	.	6
Domestic Battery	17	12	.	29
Escape	5	22	.	27
Fail To Stop After Accident - Operating Vehicle Intoxicated	.	.	3	3
Failure Of Sex Offender To Possess Id	1	1

INDIANA DEPARTMENT OF CORRECTION
ADULT OFFENDERS
by Most Serious Offense
for February 2016
snapshot date: 02/01/2016

Westville Correctional Facility													
Most Serious Offense	Murder	FA	FB	FC	FD	F1	F2	F3	F4	F5	F6	HO	Total
Failure To Appear	3	.	3
Failure To Register As A Sex Offender	.	.	.	22	5	11	5	.	43
Failure To Return Lawful Detention/Escape	.	.	1	8	6	15
Firearm Within 1 Mile School Property Without License	.	.	.	11	11
Forgery,Counterfeiting,Application Fraud	.	.	.	59	2	4	.	65
Fraud	1	1	.	2
Fraud On A Financial Institution	.	.	.	9	7	.	.	16
Habitual Offender	1	1
Habitual Offender Substance Abuse	1	1	2
Handgun Violation (Felony Within 15 Yrs)	.	.	.	9	20	.	.	29
Home Improvement Fraud Enhancement	.	.	.	1	1
Identity Deception	2	2
Illegal Possession Of Firearm By Felon	.	.	.	1	1
Intimidation	.	.	.	9	9	3	4	.	25
Invasion Of Privacy	6	.	6
Involuntary Manslaughter	.	.	.	2	2
Kidnapping	.	1	2	3
Maintaining Common Nuisance	2	2
Mischief	.	.	.	1	1
Murder	50	50
Neglect Of A Dependent	.	.	9	4	1	1	.	15
Neglect Of A Dependent Resulting In Serious Injury	3	3
Neglect Of Dependent Resulting In Death	.	1	1
Non Support Of Dependent Child	.	.	.	12	5	17
Obliterating Handgun I.D.	.	.	.	1	1
Obstruction Of Justice	1	2	.	3
Operate Vehicle After Suspended For Life	.	.	.	38	43	.	.	81
Operating Vehicle Intoxicated Resulting in Death	.	.	8	2	3	.	.	13
Operating Vehicle Intoxicated Resulting in Serious Bodily Injury	.	.	.	1	1	.	2
Operating Vehicle While Intoxicated-Previous Conviction	22	10	.	32
Operating Vehicle-Habit Traffic Violator	.	.	.	1	11	8	.	20
Opererating Vehicle While Intoxicated - Endangering Person	2	2
Opererating Vehicle While Intoxicated - Prior Conviction	4	.	4
Perjury	1	.	1
Possess Chemical Reagents Or Precursors	.	.	.	11	2	.	.	13

INDIANA DEPARTMENT OF CORRECTION
ADULT OFFENDERS
by Most Serious Offense
for February 2016
snapshot date: 02/01/2016

Westville Correctional Facility													
Most Serious Offense	Murder	FA	FB	FC	FD	F1	F2	F3	F4	F5	F6	HO	Total
Possess Of Precursors	5	4	.	9
Possession Of A Controlled Substance	.	.	2	11	8	1	.	22
Possession Of Cocaine Or Narcotic Drug	.	12	16	11	12	.	.	.	3	3	14	.	71
Possession Of Dangerous Device	1	.	.	1
Possession Of Marijuana, Hash, Hash Oil	5	3	.	8
Possession Of Methamphetamine	.	1	24	5	8	5	16	.	59
Possession Of Paraphernalia	1	.	1
Possession Of Syringes Or Needles	1	4	.	5
Possession Or Use Of Legend Drug	2	.	2
Rape	.	4	2	6
Reckless Homicide	.	.	.	6	2	.	.	8
Residential Entry	5	6	.	11
Resisting Law Enforcement	.	.	.	1	8	8	.	17
Robbery	.	15	182	38	.	.	3	43	.	25	.	.	306
Sexual Misconduct With A Minor	.	.	1	2	3
Stalking	.	.	2	3	1	3	.	.	9
Strangulation	8	5	.	13
Theft,Receiving Stolen Property	58	40	.	98
Trafficking With An Inmate	.	.	.	4	3	.	.	7
Unlawful Firearm Poss By Serious Felon	.	.	56	13	.	.	.	69
Voluntary Manslaughter	.	26	5	31
Total	50	184	1,282	515	231	.	9	88	107	313	219	2	3,000