



2014-15 State of Indiana Disparity Study

BBC
RESEARCH &
CONSULTING



January 2015

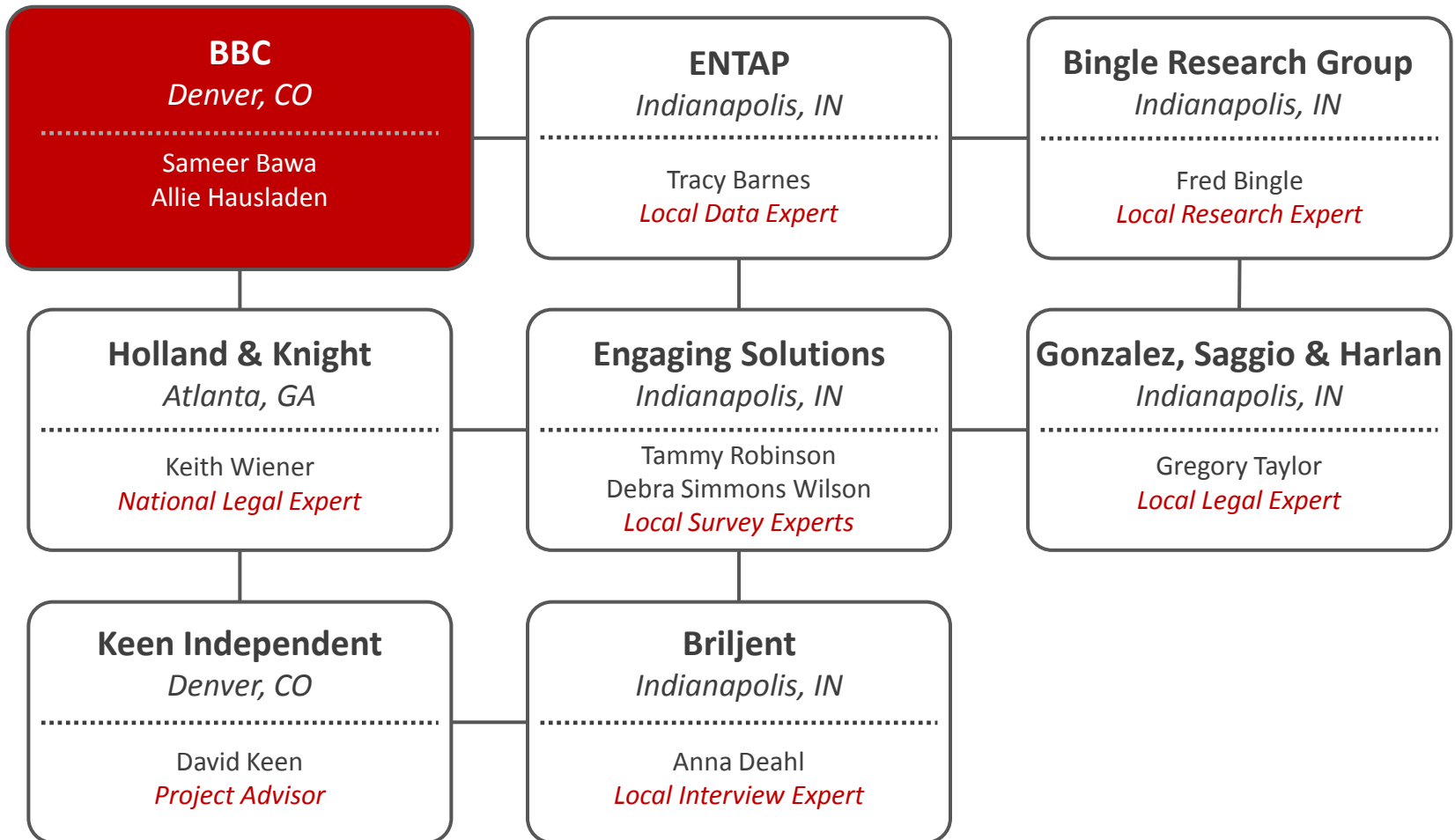
Presented by

Sameer Bawa, *BBC Director*
Allie Hausladen, *BBC Associate*
1999 Broadway, Suite 2200
Denver, Colorado 80202
(303) 321-2547
sbawa@bbcresearch.com
ahausladen@bbcresearch.com

Study Participants



BBC Project Team



Primary Objectives

Assess whether minority-/women-owned businesses (M/WBEs) face discrimination

- 1** Assess any underutilization of M/WBEs
- 2** Examine any barriers in Indiana marketplace
- 3** Review contract policies, program measures
- 4** Refine current program measures
- 5** Ensure program compliance

BBC Disparity Study

BBC
RESEARCH &
CONSULTING

**DISPARITY
STUDY**

Community engagement

Legal analysis and framework

Review of contracting, program measures

Utilization analysis

Availability analysis

Disparity analysis

Explorations of any disparities

Analyses of marketplace conditions

Recommendations and implementation

BBC Disparity Study

BBC
RESEARCH &
CONSULTING

DISPARITY
STUDY

Community engagement

Legal analysis and framework

Review of contracting, program measures

Utilization analysis

Availability analysis

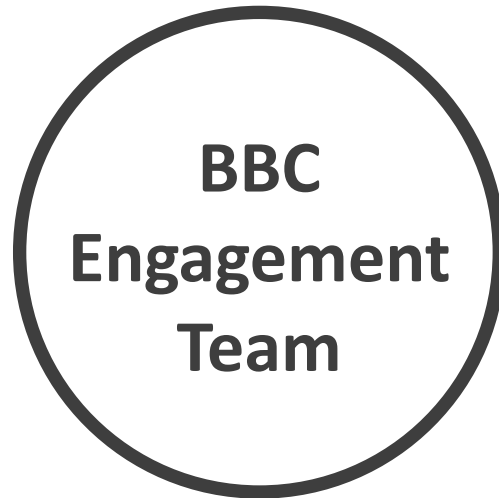
Disparity analysis

Explorations of any disparities

Analyses of marketplace conditions

Recommendations and implementation

Community Engagement



Information

- Steering committee
- Public notices
- Webpage/e-mail

Participation

- Public forums
- In-depth interviews
- Telephone surveys

Utilization Analysis

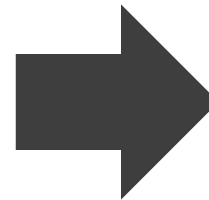
Determine percentage of prime contract, subcontract dollars that went to M/WBEs

Entity data

- Prime contracts, subcontracts
- Utilized vendors
- Other information

Telephone surveys

- Business information
- Lines of work
- Year established
- Race/ethnicity and gender



XX%
M/WBE UTILIZATION
on entity contracts

Availability Analysis

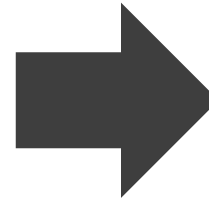
Measure percentage of contract dollars that M/WBEs ready, willing, able to perform

Entity data

- Prime contracts, subcontracts
- Other information

Telephone surveys

- Lines of work
- Contractor role
- Year established
- Relative capacity
- Locations willing to work
- Qualifications and interest
- Race/ethnicity and gender



XX%
M/WBE AVAILABILITY
for entity contracts

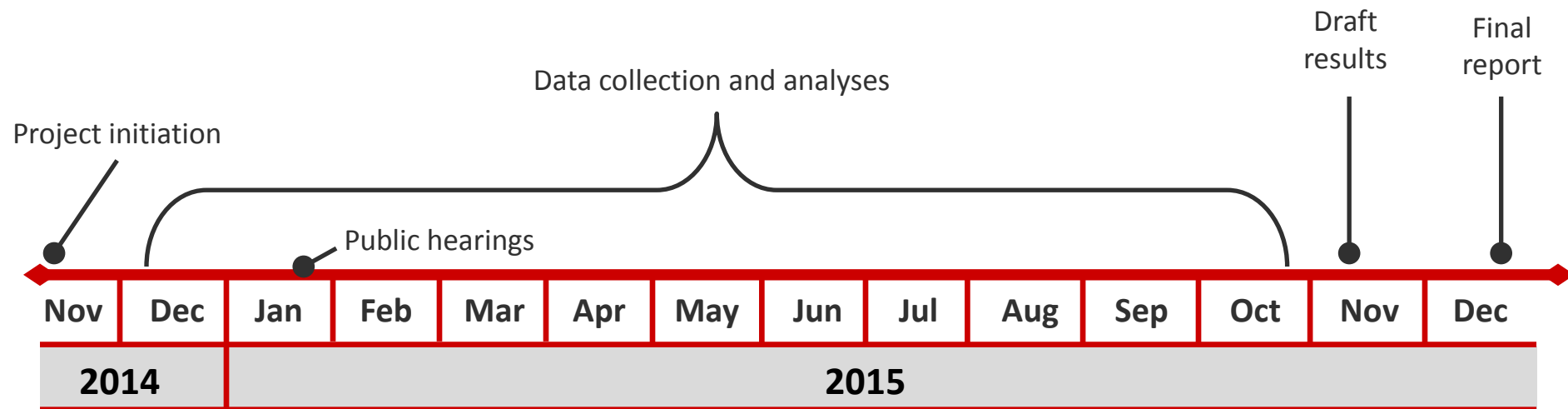
Disparity Analysis

Assess differences between utilization and availability

$$\frac{\text{XX\% M/WBE UTILIZATION}}{\text{XX\% M/WBE AVAILABILITY}} = \text{DISPARITY INDEX}$$

- Disparities of 0.80 or less considered *substantial*
- Assessment of explanations for any disparities

Study Schedule



Next Steps

- 1** Develop legal framework and analysis
- 2** Review, analyze entity data
- 3** Conduct telephone surveys
- 4** Conduct in-depth interviews
- 5** Conduct analyses of marketplace conditions



Thank you!

Testimony

 mwbe@bbcresearch.com

Verbal or written testimony related to your experiences working in the Indiana marketplace

Potential topics:

- Race- or gender-based discrimination
- Any barriers to success
- Payment issues
- Private or public sector work
- Prime contractor or subcontractor work
- Working with participating entities