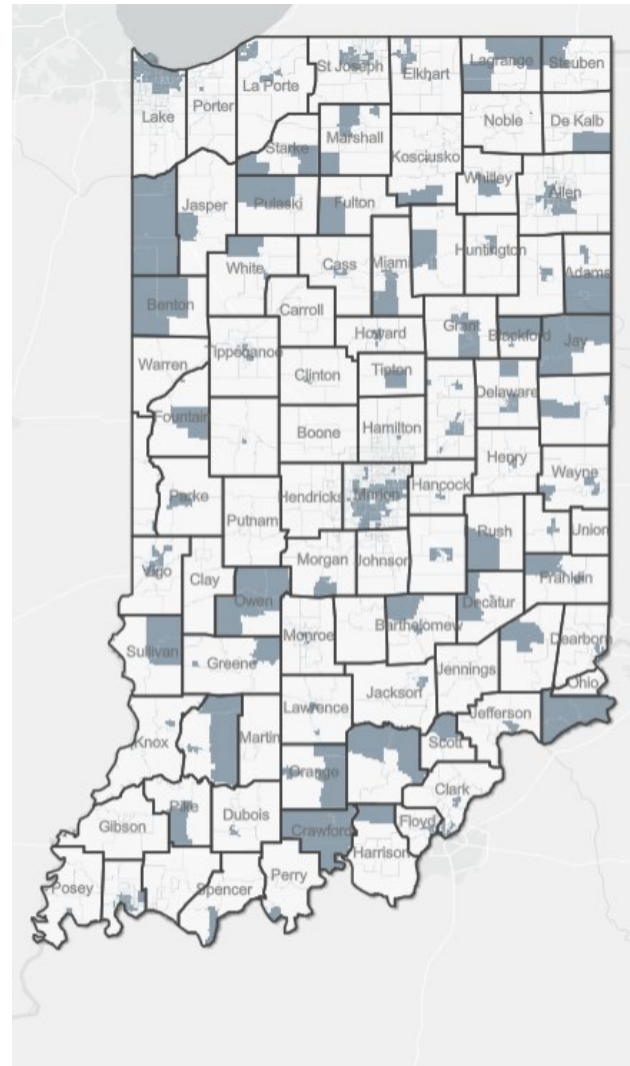




IDEM Environmental Stakeholder Inclusion (ESI)

Climate and Economic Justice Screening Tool (CEJS) <https://screeningtool.geoplatform.gov/en/#3/33.47/-97.5>



Justice40 Tracts November 2022
Version 1.0

Assessment

- Disadvantaged
- Partially Disadvantaged
- Not Disadvantaged



Program Development

	2020						2021												2022				
	Jun	Jul	Aug	Sep	Oct	Nov	Dec	Jan	Feb	Mar	Apr	May	Jun	Jul	Aug	Sep	Oct	Nov	Dec	Jan	Feb	Mar	
ESI Introduction to Senior Management	█																						
ESI Introduction to Program Staff	█	█	█																				
Create Nondiscrimination Policy Statement		█	█																				
Develop ESI SOP Guidance Document			█	█	█																		
Develop ESI POC Training Material			█	█	█	█																	
Conduct POC Training						█	█																
Refining ESI SOP Guidance Document								█	█	█	█												
Develop ESI SOP Guidance Document into SOP												█	█	█									
Update Nondiscrimination Policy to Incorporate SOP																█	█	█	█				

What is the Environmental Stakeholder Inclusion (ESI) Program?



IDEM's ESI Program (referenced in the agency's Nondiscrimination Policy: A-008-AW-23-P-R6) will ensure that all external stakeholders understand and are represented in agency actions through enhanced public service.

Who are IDEM's stakeholders?



IDEM's stakeholders are the people of Indiana. The Nondiscrimination Policy of IDEM states that the agency and agency staff are "to provide fair treatment and meaningful involvement to all people, regardless of race, color, gender, national origin, geographic location, income, or any other federally protected class designation."

ESI Provides Enhanced Service to Stakeholders

- Americans with Disabilities Act (ADA) accommodations
- Translation and interpretation services
- Notification assistance services
- Plain English guide services for interpreting complex vocabulary, the technical and scientific bases for decisions, and the appropriate involvement process steps
- Special assistance requests



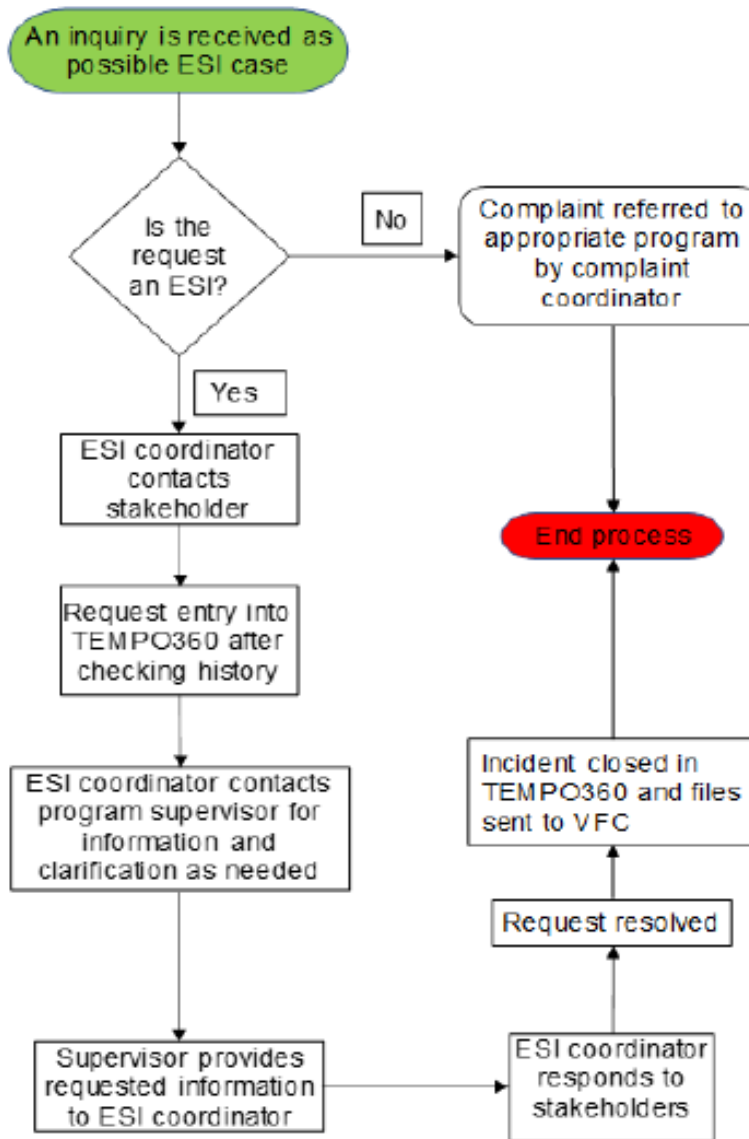
Examples of ESI Requests

Communication from a stakeholder requesting:

1. Translation of documentation
2. An ADA accommodation for a public meeting or public hearing
3. Services for a public meeting or public hearing
4. Understanding of an agency action



ESI Request SOP





How the Program Works

- An ESI stakeholder makes a request to IDEM staff, program contact, ESI agency coordinator, or complaints coordinator by phone call, email, letter, fax, or in-person.
- Request is entered into “Tempo” (RM), recordkeeping system and will be updated throughout the process of addressing the request.
- An acknowledgement is made to the stakeholder within 24 hours (or the next business day when the request is received on a nonbusiness day).
- An initial response on the request shall occur within 30 days.
- ESI Coordinator will attempt to address the request within 90 days.

What can you do to be a Good Neighbor in the Community?

- Create an in-house EJ Coordinator position or assign existing staff the responsibility of covering EJ concerns and making that EJ presence known on website with direct contact information.
- Organizations with historical compliance issues; provide local community specific information on how those issues have been addressed/what changes have been implemented to move toward and remain in compliance.

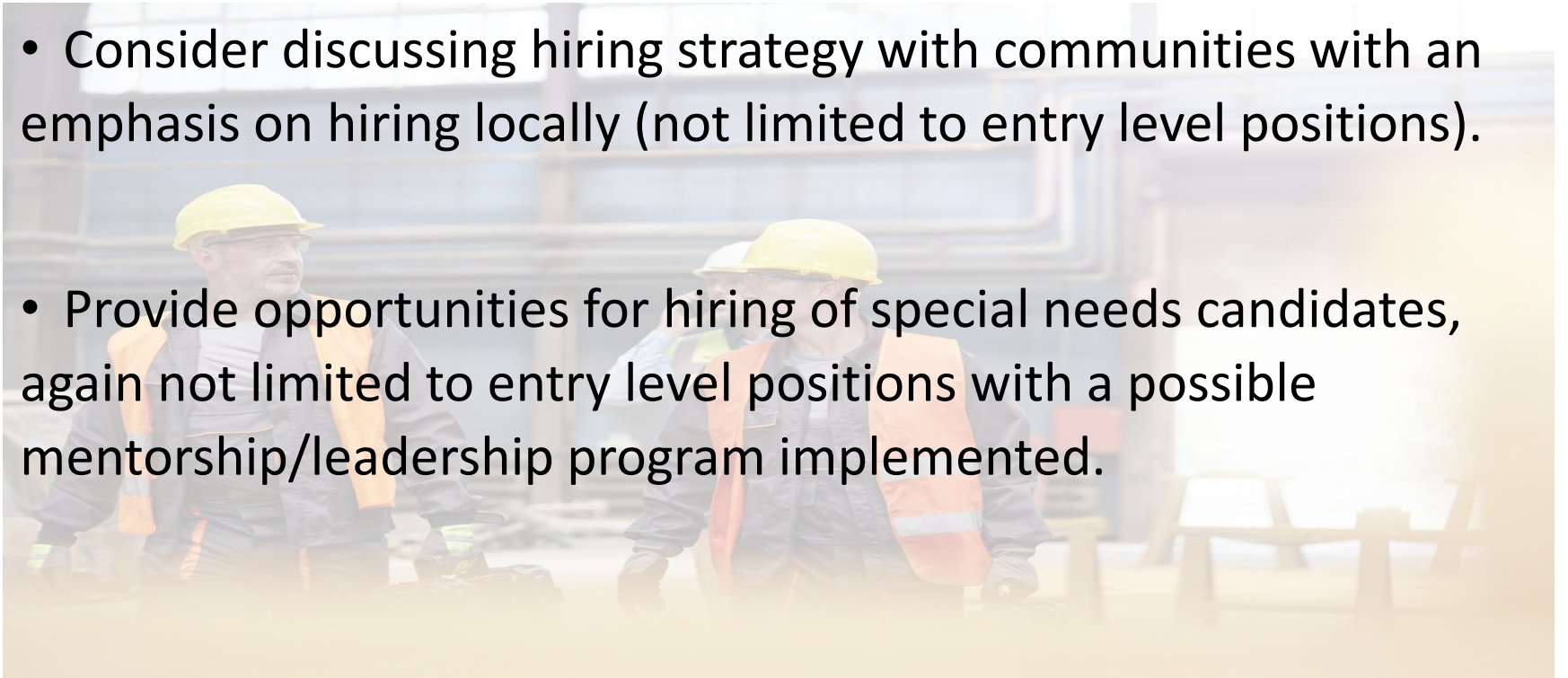
Image= <https://today.duke.edu/2020/08/historic-solar-deal-powers-duke-u-toward-carbon-neutrality>

Good Neighbor cont.

- Corporate sponsored employee volunteer events (local “Habitat for Humanity” or beach clean up event days).
- “Adopt a highway” in surrounding area with corresponding clean up days (preferably near facility).
- Tree planting in the community and/or creating a windbreak/sound break to appease fence line communities
- Use of solar panel fields, windmills, or roof top gardens to offset carbon/emissions generated.

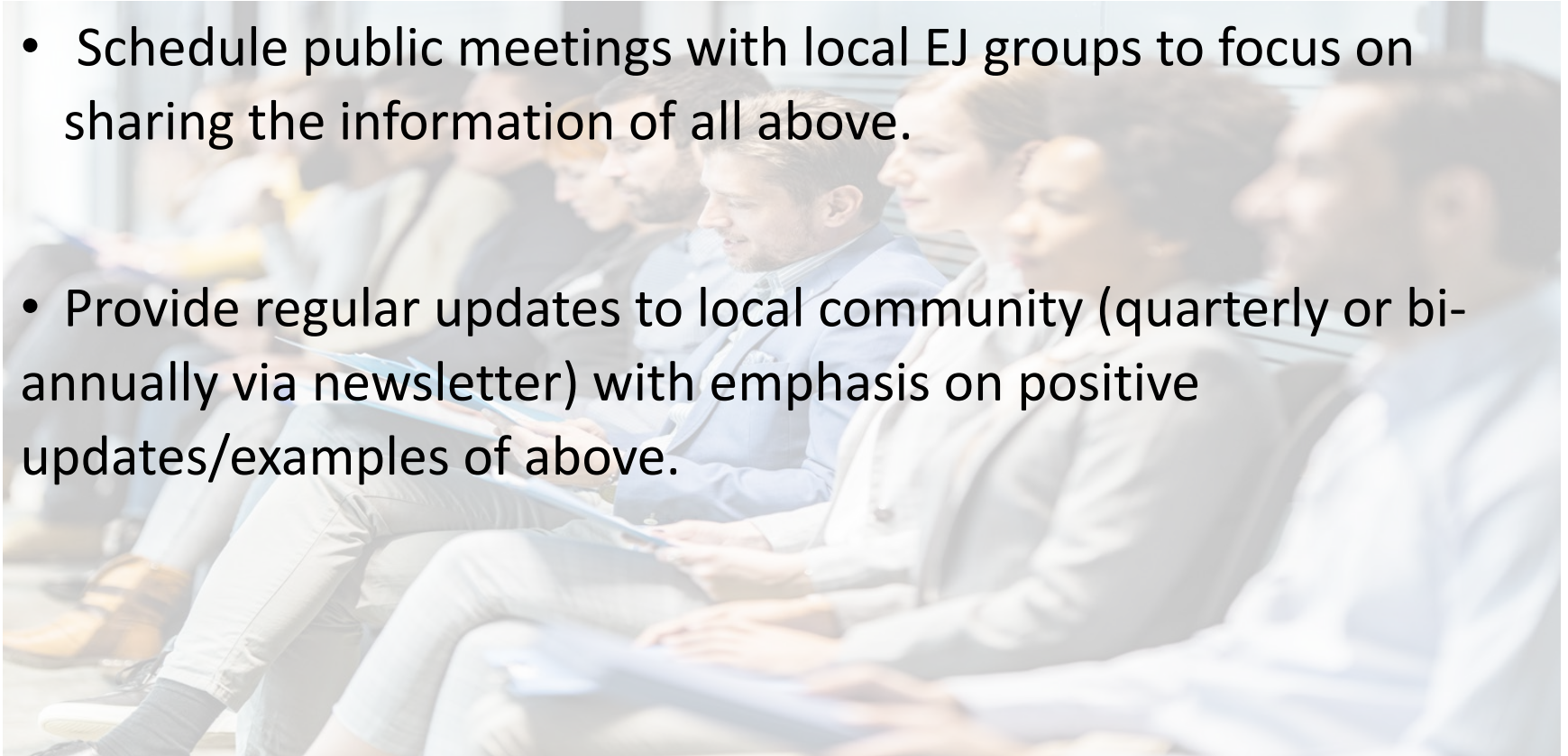
Good Neighbor cont.

- Consider discussing hiring strategy with communities with an emphasis on hiring locally (not limited to entry level positions).
- Provide opportunities for hiring of special needs candidates, again not limited to entry level positions with a possible mentorship/leadership program implemented.



Good Neighbor cont.

- Schedule public meetings with local EJ groups to focus on sharing the information of all above.
- Provide regular updates to local community (quarterly or bi-annually via newsletter) with emphasis on positive updates/examples of above.





For More Information:

Environmental Stakeholder Inclusion website:
<https://www.in.gov/idem/health/esi/>

Email: ESI@idem.IN.gov

For program assistance:

Rahim Evans

Northwest Office

(219) 265-3205 office

(219) 265-3205 cell

rpevans@idem.IN.gov

Herb Engman

Indiana Government Center

(317) 233-4088 office

(317) 508-3215 cell

hengman@idem.IN.gov



**Tell Us What's On Your Mind?
Questions or Input?**