



Saxitoxin ELISA Summary Report

Office of Water Quality - Watershed Assessment and Planning Branch

Sample #	Location	Date Collected	Date Analyzed	Conc. (ppb)
AB48118	Summit Lake - State Park	8/16/2021	8/19/2021	< 0.050
AB48119	Kunkel Beach @ Ouabache State Park	8/17/2021	8/19/2021	5.5
AB48120	Pokagon State Park	8/17/2021	8/19/2021	< 0.050
AB48121	Potawatomi Inn's Beach	8/17/2021	8/19/2021	< 0.050
AB48122	Chain O'Lakes SP	8/17/2021	8/19/2021	0.052
AB48123	Potato Creek State Park	8/17/2021	8/19/2021	0.068
AB48124	Lost Bridge West SRA	8/16/2021	8/19/2021	0.052
AB48125	Mississinewa Lake Miami SRA	8/16/2021	8/19/2021	< 0.050
AB48126	Summit Lake State Park (Field Dup)	8/16/2021	8/19/2021	< 0.050
AB48127	Field Blank	8/16/2021	8/19/2021	< 0.050
AB48131	Lincoln State Park	8/16/2021	8/19/2021	< 0.050
AB48132	Ferdinand State Forest Lake	8/16/2021	8/19/2021	< 0.050
AB48133	Patoka SRA Beach	8/16/2021	8/19/2021	< 0.050
AB48328	Ft. Ben Harrison SP Dog Lake - East	8/17/2021	8/19/2021	< 0.050

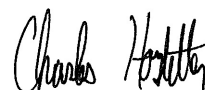
Test Information

Request: 8/19/2021 1:40:44 PM
Date: 8/19/2021

Name/ID	Assay	Absorbance	Concentration	Interpretation	Note	Reference	Lot#
STX Std 0	SAXITOXIN	1.163 Abs	0.002 µg/L	R ² =0.99925, 99.3%			20G3584
STX Std 0	SAXITOXIN	1.179 Abs [1.1710] {1.0 C	0.000 µg/L [0.001]	R ² =0.99925, 100.6%			20G3584
STX Std 1	SAXITOXIN	1.038 Abs	0.019 µg/L	R ² =0.99925, 88.6%			20G3584
STX Std 1	SAXITOXIN	1.010 Abs [1.0240] {1.9 C	0.022 µg/L [0.021]	R ² =0.99925, 86.2%			20G3584
STX Std 2	SAXITOXIN	0.798 Abs	0.046 µg/L	R ² =0.99925, 68.1%			20G3584
STX Std 2	SAXITOXIN	0.766 Abs [0.7820] {2.9 C	0.051 µg/L [0.049]	R ² =0.99925, 65.4%			20G3584
STX Std 3	SAXITOXIN	0.503 Abs	0.100 µg/L	R ² =0.99925, 42.9%			20G3584
STX Std 3	SAXITOXIN	0.472 Abs [0.4875] {4.5 C	0.109 µg/L [0.104]	R ² =0.99925, 40.3%			20G3584
STX Std 4	SAXITOXIN	0.311 Abs	0.186 µg/L	R ² =0.99925, 26.5%			20G3584
STX Std 4	SAXITOXIN	0.304 Abs [0.3075] {1.6 C	0.192 µg/L [0.189]	R ² =0.99925, 25.9%			20G3584
STX Std 5	SAXITOXIN	0.183 Abs	> 0.400 µg/L	15.628 %Abs			20G3584
STX Std 5	SAXITOXIN	0.176 Abs [0.1795] {2.8 C	> 0.400 µg/L	15.030 %Abs			20G3584
STX Control (0.060-0.090)	SAXITOXIN	0.624 Abs	0.073 µg/L	53.288 %Abs			20G3584
STX Control (0.060-0.090)	SAXITOXIN	0.608 Abs [0.6160] {1.8 C	0.076 µg/L [0.074]	51.921 %Abs [52.6			20G3584

Note

Signature



Charles Hostetter 8/20/2021

Test Report (by Request)

Test Information

Request: 8/19/2021 1:42:02 PM
Date: 8/19/2021

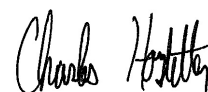
Name/ID	Assay	Absorbance	Concentration	Interpretation	Note	Reference	Lot#
LRB (SAX)	SAXITOXIN	1.170 Abs	0.000 µg/L	Low, 100.000 %Abs		0.020 - 0.400	20G3584
LRB (SAX)	SAXITOXIN	1.157 Abs [1.1635] {0.8 C	0.004 µg/L [0.002]	Low, 98.804 %Abs		0.020 - 0.400	20G3584
LFB (SAX)	SAXITOXIN	0.528 Abs	0.094 µg/L	45.090 %Abs		0.020 - 0.400	20G3584
LFB (SAX)	SAXITOXIN	0.503 Abs [0.5155] {3.4 C	0.100 µg/L [0.097]	42.955 %Abs [44.0		0.020 - 0.400	20G3584
AB48118	SAXITOXIN	1.122 Abs	0.009 µg/L	Low, 95.816 %Abs		0.020 - 0.400	20G3584
AB48118	SAXITOXIN	1.110 Abs [1.1160] {0.8 C	0.011 µg/L [0.010]	Low, 94.791 %Abs		0.020 - 0.400	20G3584
AB48119	SAXITOXIN	0.029 Abs	> 0.400 µg/L	2.477 %Abs, Out(LI		0.020 - 0.400	20G3584
AB48119	SAXITOXIN	0.028 Abs [0.0285] {2.5 C	> 0.400 µg/L	2.391 %Abs, Out(LI		0.020 - 0.400	20G3584
AB48120	SAXITOXIN	1.071 Abs	0.015 µg/L	Low, 91.460 %Abs		0.020 - 0.400	20G3584
AB48120	SAXITOXIN	1.066 Abs [1.0685] {0.3 C	0.016 µg/L [0.015]	Low, 91.033 %Abs		0.020 - 0.400	20G3584
AB48121	SAXITOXIN	1.118 Abs	0.010 µg/L	Low, 95.474 %Abs		0.020 - 0.400	20G3584
AB48121	SAXITOXIN	1.082 Abs [1.1000] {2.3 C	0.014 µg/L [0.012]	Low, 92.400 %Abs		0.020 - 0.400	20G3584
AB48122	SAXITOXIN	0.806 Abs	0.045 µg/L	68.830 %Abs		0.020 - 0.400	20G3584
AB48122	SAXITOXIN	0.788 Abs [0.7970] {1.6 C	0.048 µg/L [0.047]	67.293 %Abs [68.0		0.020 - 0.400	20G3584
AB48123	SAXITOXIN	0.700 Abs	0.060 µg/L	59.778 %Abs		0.020 - 0.400	20G3584
AB48123	SAXITOXIN	0.676 Abs [0.6880] {2.5 C	0.064 µg/L [0.062]	57.728 %Abs [58.7		0.020 - 0.400	20G3584
AB48124	SAXITOXIN	0.811 Abs	0.045 µg/L	69.257 %Abs		0.020 - 0.400	20G3584
AB48124	SAXITOXIN	0.782 Abs [0.7965] {2.6 C	0.049 µg/L [0.047]	66.781 %Abs [68.0		0.020 - 0.400	20G3584
AB48124MS	SAXITOXIN	0.432 Abs	0.122 µg/L	36.892 %Abs		0.020 - 0.400	20G3584
AB48124MS	SAXITOXIN	0.405 Abs [0.4185] {4.6 C	0.133 µg/L [0.127]	34.586 %Abs [35.7		0.020 - 0.400	20G3584
AB48124MSD	SAXITOXIN	0.414 Abs	0.129 µg/L	35.354 %Abs		0.020 - 0.400	20G3584
AB48124MSD	SAXITOXIN	0.392 Abs [0.4030] {3.9 C	0.139 µg/L [0.134]	33.476 %Abs [34.4		0.020 - 0.400	20G3584
AB48125	SAXITOXIN	1.055 Abs	0.017 µg/L	Low, 90.094 %Abs		0.020 - 0.400	20G3584
AB48125	SAXITOXIN	1.033 Abs [1.0440] {1.5 C	0.020 µg/L [0.019]	88.215 %Abs [Low,		0.020 - 0.400	20G3584
AB48126	SAXITOXIN	1.097 Abs	0.012 µg/L	Low, 93.681 %Abs		0.020 - 0.400	20G3584
AB48126	SAXITOXIN	1.090 Abs [1.0935] {0.5 C	0.013 µg/L [0.013]	Low, 93.083 %Abs		0.020 - 0.400	20G3584
AB48127	SAXITOXIN	1.161 Abs	0.003 µg/L	Low, 99.146 %Abs		0.020 - 0.400	20G3584
AB48127	SAXITOXIN	1.151 Abs [1.1560] {0.6 C	0.005 µg/L [0.004]	Low, 98.292 %Abs		0.020 - 0.400	20G3584
AB48131	SAXITOXIN	1.028 Abs	0.020 µg/L	87.788 %Abs		0.020 - 0.400	20G3584
AB48131	SAXITOXIN	1.033 Abs [1.0305] {0.3 C	0.020 µg/L [0.020]	88.215 %Abs [88.0		0.020 - 0.400	20G3584
AB48132	SAXITOXIN	0.929 Abs	0.031 µg/L	79.334 %Abs		0.020 - 0.400	20G3584
AB48132	SAXITOXIN	0.912 Abs [0.9205] {1.3 C	0.033 µg/L [0.032]	77.882 %Abs [78.6		0.020 - 0.400	20G3584
AB48133	SAXITOXIN	1.104 Abs	0.011 µg/L	Low, 94.278 %Abs		0.020 - 0.400	20G3584
AB48133	SAXITOXIN	1.091 Abs [1.0975] {0.8 C	0.013 µg/L [0.012]	Low, 93.168 %Abs		0.020 - 0.400	20G3584
AB48328	SAXITOXIN	1.063 Abs	0.016 µg/L	Low, 90.777 %Abs		0.020 - 0.400	20G3584
AB48328	SAXITOXIN	1.026 Abs [1.0445] {2.5 C	0.020 µg/L [0.018]	87.617 %Abs [Low,		0.020 - 0.400	20G3584

Note

Field samples have a manual dilution factor of 1.1X because they contain buffer. Concentrations shown are multiplied by 1.1 to get the final results.

AB48119 was over calibration range and reanalyzed in a later assay after further dilutions.

Signature



Charles Hostetter 8/20/2021

Assay Information

Assay Name: SAXITOXIN
Version: 2
Temperature: Room Temperature
Last Modified By: Security disabled
Units: µg/L
Assay Description: PN. 52255B
Assay Substances: Controls:

Assay Mode: 4-Parameter Logistic Weight by:None
Well Type: Flat bottom
Last Modified On: 7/25/2019 3:55:28 PM
Normal: 0.020 - 0.400
of decimals: 3
Kit Lot Number: 20G3584

STX Control (0.060-0.090)
Standards:
STX Std 0, Concentration = 0.000, Minimum number to use: 2
STX Std 1, Concentration = 0.020, Minimum number to use: 2
STX Std 2, Concentration = 0.050, Minimum number to use: 2
STX Std 3, Concentration = 0.100, Minimum number to use: 2
STX Std 4, Concentration = 0.200, Minimum number to use: 2
STX Std 5, Concentration = 0.400, Minimum number to use: 2
Curve valid interval: 1 days 0 hours
Axis Mode: Y = Abs, X = Log(Conc)

Assay Calibration

Current Calibration Status: "

"

Name	Absorbance	Concentration	Interpretation	Position
8/19/2021 1:40:44 PM				
STX Std 0	1.163 Abs	0.002 µg/L	R ² =0.99925, 99.317 %Abs	RK1:23->A01@2
STX Std 0	1.179 Abs [1.1710] {1.0 CV}	0.000 µg/L [0.001] {141.4 CV}	R ² =0.99925, 100.683 %Abs	RK1:23->B01@2
STX Std 1	1.038 Abs	0.019 µg/L	R ² =0.99925, 88.642 %Abs	RK1:24->C01@2
STX Std 1	1.010 Abs [1.0240] {1.9 CV}	0.022 µg/L [0.021] {10.3 CV}	R ² =0.99925, 86.251 %Abs	RK1:24->D01@2
STX Std 2	0.798 Abs	0.046 µg/L	R ² =0.99925, 68.147 %Abs	RK1:25->E01@2
STX Std 2	0.766 Abs [0.7820] {2.9 CV}	0.051 µg/L [0.049] {7.3 CV}	R ² =0.99925, 65.414 %Abs	RK1:25->F01@3
STX Std 3	0.503 Abs	0.100 µg/L	R ² =0.99925, 42.955 %Abs	RK1:26->G01@3
STX Std 3	0.472 Abs [0.4875] {4.5 CV}	0.109 µg/L [0.104] {6.1 CV}	R ² =0.99925, 40.307 %Abs	RK1:26->H01@3
STX Std 4	0.311 Abs	0.186 µg/L	R ² =0.99925, 26.558 %Abs	RK1:27->A02@2
STX Std 4	0.304 Abs [0.3075] {1.6 CV}	0.192 µg/L [0.189] {2.2 CV}	R ² =0.99925, 25.961 %Abs	RK1:27->B02@2
STX Std 5	0.183 Abs	> 0.400 µg/L	15.628 %Abs	RK1:28->C02@2
STX Std 5	0.176 Abs [0.1795] {2.8 CV}	> 0.400 µg/L	15.030 %Abs	RK1:28->D02@2

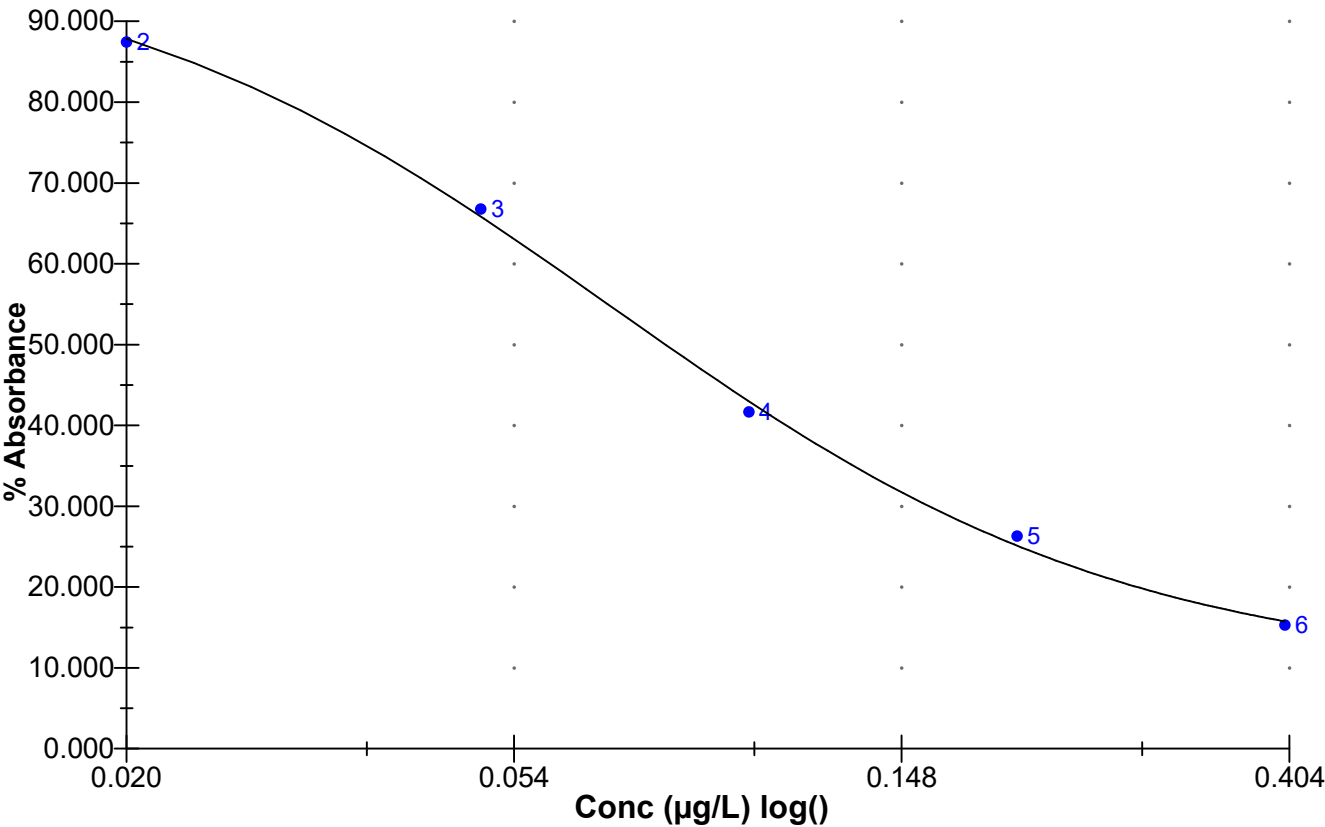
8/19/2021 1:40:44 PM				
STX Control (0.060-0.090)	0.624 Abs	0.073 µg/L	53.288 %Abs	RK1:29->E02@2
STX Control (0.060-0.090)	0.608 Abs [0.6160] {1.8 CV}	0.076 µg/L [0.074] {2.8 CV}	51.921 %Abs [52.605 %Abs]	RK1:29->F02@3

Statistic				
STX Std 0 [MEAN]	1.1710	0.0010		
STX Std 0 [SD]	0.0113	0.0014		
STX Std 0 [%CV]	0.9662	141.4214		
STX Std 1 [MEAN]	1.0240	0.0205		
STX Std 1 [SD]	0.0198	0.0021		
STX Std 1 [%CV]	1.9335	10.3479		
STX Std 1 [%DIFF]		2.5000		
STX Std 2 [MEAN]	0.7820	0.0485		
STX Std 2 [SD]	0.0226	0.0035		
STX Std 2 [%CV]	2.8935	7.2898		
STX Std 2 [%DIFF]		-3.0000		
STX Std 3 [MEAN]	0.4875	0.1045		
STX Std 3 [SD]	0.0219	0.0064		
STX Std 3 [%CV]	4.4965	6.0899		
STX Std 3 [%DIFF]		4.5000		
STX Std 4 [MEAN]	0.3075	0.1890		
STX Std 4 [SD]	0.0049	0.0042		
STX Std 4 [%CV]	1.6097	2.2448		
STX Std 4 [%DIFF]		-5.5000		
STX Std 5 [MEAN]	0.1795			
STX Std 5 [SD]	0.0049			
STX Std 5 [%CV]	2.7575			

Name	Absorbance	Concentration	Interpretation	Position	
STX Control (0.060-0.090) [MEAN]	0.6160	0.0745			
STX Control (0.060-0.090) [SD]	0.0113	0.0021			
STX Control (0.060-0.090) [%CV]	1.8366	2.8474			

Assay Curve

$y = (A-D)/(1+(x/C)^B) + D$
 Weight: NONE
 A = 1.1699
 B = 1.4924
 C = 0.070096
 D = 0.11118
 R2 coef = 0.99925
 50% = 0.081



Test Report (by Request)

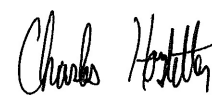
Test Information

Request: 8/19/2021 3:30:18 PM
Date: 8/19/2021

Name/ID	Assay	Absorbance	Concentration	Interpretation	Note	Reference	Lot#
STX Std 0	SAXITOXIN	1.179 Abs	0.000 µg/L	R ² =0.99888, 100.6			20G3584
STX Std 0	SAXITOXIN	1.163 Abs [1.1710] {1.0 C	0.001 µg/L [0.001]	R ² =0.99888, 99.31			20G3584
STX Std 1	SAXITOXIN	0.992 Abs	0.020 µg/L	R ² =0.99888, 84.71			20G3584
STX Std 1	SAXITOXIN	0.972 Abs [0.9820] {1.4 C	0.022 µg/L [0.021]	R ² =0.99888, 83.00			20G3584
STX Std 2	SAXITOXIN	0.771 Abs	0.045 µg/L	R ² =0.99888, 65.84			20G3584
STX Std 2	SAXITOXIN	0.742 Abs [0.7565] {2.7 C	0.049 µg/L [0.047]	R ² =0.99888, 63.36			20G3584
STX Std 3	SAXITOXIN	0.483 Abs	0.101 µg/L	R ² =0.99888, 41.24			20G3584
STX Std 3	SAXITOXIN	0.456 Abs [0.4695] {4.1 C	0.109 µg/L [0.105]	R ² =0.99888, 38.94			20G3584
STX Std 4	SAXITOXIN	0.297 Abs	0.191 µg/L	R ² =0.99888, 25.36			20G3584
STX Std 4	SAXITOXIN	0.287 Abs [0.2920] {2.4 C	0.200 µg/L [0.196]	R ² =0.99888, 24.50			20G3584
STX Std 5	SAXITOXIN	0.176 Abs	0.391 µg/L	R ² =0.99888, 15.03			20G3584
STX Std 5	SAXITOXIN	0.172 Abs [0.1740] {1.6 C	> 0.400 µg/L [0.39	14.688 %Abs			20G3584
STX Control (0.060-0.090)	SAXITOXIN	0.600 Abs	0.073 µg/L	51.238 %Abs			20G3584
STX Control (0.060-0.090)	SAXITOXIN	0.589 Abs [0.5945] {1.3 C	0.075 µg/L [0.074]	50.299 %Abs [50.7			20G3584

Note

Signature



Charles Hostetter 8/20/2021

Test Information

Request: 8/19/2021 3:30:33 PM
Date: 8/19/2021

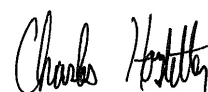
Name/ID	Assay	Absorbance	Concentration	Interpretation	Note	Reference	Lot#
LRB (SAX)	SAXITOXIN	1.144 Abs	0.004 µg/L	Low, 97.694 %Abs		0.020 - 0.400	20G3584
LRB (SAX)	SAXITOXIN	1.158 Abs [1.1510] {0.9 C	0.002 µg/L [0.003]	Low, 98.890 %Abs		0.020 - 0.400	20G3584
LFB (SAX)	SAXITOXIN	0.493 Abs	0.098 µg/L	42.101 %Abs		0.020 - 0.400	20G3584
LFB (SAX)	SAXITOXIN	0.477 Abs [0.4850] {2.3 C	0.103 µg/L [0.101]	40.734 %Abs [41.4		0.020 - 0.400	20G3584
AB48119 50X	SAXITOXIN	0.482 Abs	0.101 µg/L	41.161 %Abs		0.020 - 0.400	20G3584
AB48119 50X	SAXITOXIN	0.454 Abs [0.4680] {4.2 C	0.110 µg/L [0.105]	38.770 %Abs [39.9		0.020 - 0.400	20G3584
AB48119 25X	SAXITOXIN	0.294 Abs	0.194 µg/L	25.107 %Abs		0.020 - 0.400	20G3584
AB48119 25X	SAXITOXIN	0.277 Abs [0.2855] {4.2 C	0.209 µg/L [0.201]	23.655 %Abs [24.3		0.020 - 0.400	20G3584
AB48119 10X	SAXITOXIN	0.147 Abs	> 0.400 µg/L	12.553 %Abs, Out(l		0.020 - 0.400	20G3584
AB48119 10X	SAXITOXIN	0.145 Abs [0.1460] {1.0 C	> 0.400 µg/L	12.383 %Abs, Out(l		0.020 - 0.400	20G3584

Note

AB48119 was analyzed at a 10X, 25X, & 50X dilution factors. Please note that AB48119 contains buffer and originally has a 1.1X dilution factor.

The 25X dilution factor has been reported. The final result is calculated as follows: $.201(25)(1.1) = 5.5 \text{ ug/L}$

Signature



Charles Hostetter 8/20/2021

Assay Information

Assay Name: SAXITOXIN
Version: 2
Temperature: Room Temperature
Last Modified By: Security disabled
Units: µg/L
Assay Description: PN. 52255B
Assay Substances: Controls:

Assay Mode: 4-Parameter Logistic Weight by:None
Well Type: Flat bottom
Last Modified On: 7/25/2019 3:55:28 PM
Normal: 0.020 - 0.400
of decimals: 3
Kit Lot Number: 20G3584

STX Control (0.060-0.090)
Standards:
STX Std 0, Concentration = 0.000, Minimum number to use: 2
STX Std 1, Concentration = 0.020, Minimum number to use: 2
STX Std 2, Concentration = 0.050, Minimum number to use: 2
STX Std 3, Concentration = 0.100, Minimum number to use: 2
STX Std 4, Concentration = 0.200, Minimum number to use: 2
STX Std 5, Concentration = 0.400, Minimum number to use: 2
Curve valid interval: 1 days 0 hours
Axis Mode: Y = Abs, X = Log(Conc)

Assay Calibration

Current Calibration Status: "

"

Name	Absorbance	Concentration	Interpretation	Position
8/19/2021 3:30:18 PM				
STX Std 0	1.179 Abs	0.000 µg/L	R ² =0.99888, 100.683 %Abs	RK1:23->A01@2
STX Std 0	1.163 Abs [1.1710] {1.0 CV}	0.001 µg/L [0.001] {141.4 CV}	R ² =0.99888, 99.317 %Abs	RK1:23->B01@2
STX Std 1	0.992 Abs	0.020 µg/L	R ² =0.99888, 84.714 %Abs	RK1:24->C01@2
STX Std 1	0.972 Abs [0.9820] {1.4 CV}	0.022 µg/L [0.021] {6.7 CV}	R ² =0.99888, 83.006 %Abs	RK1:24->D01@2
STX Std 2	0.771 Abs	0.045 µg/L	R ² =0.99888, 65.841 %Abs	RK1:25->E01@2
STX Std 2	0.742 Abs [0.7565] {2.7 CV}	0.049 µg/L [0.047] {6.0 CV}	R ² =0.99888, 63.365 %Abs	RK1:25->F01@3
STX Std 3	0.483 Abs	0.101 µg/L	R ² =0.99888, 41.247 %Abs	RK1:26->G01@3
STX Std 3	0.456 Abs [0.4695] {4.1 CV}	0.109 µg/L [0.105] {5.4 CV}	R ² =0.99888, 38.941 %Abs	RK1:26->H01@3
STX Std 4	0.297 Abs	0.191 µg/L	R ² =0.99888, 25.363 %Abs	RK1:27->A02@2
STX Std 4	0.287 Abs [0.2920] {2.4 CV}	0.200 µg/L [0.196] {3.3 CV}	R ² =0.99888, 24.509 %Abs	RK1:27->B02@2
STX Std 5	0.176 Abs	0.391 µg/L	R ² =0.99888, 15.030 %Abs	RK1:28->C02@2
STX Std 5	0.172 Abs [0.1740] {1.6 CV}	> 0.400 µg/L [0.391]	14.688 %Abs	RK1:28->D02@2

8/19/2021 3:30:18 PM				
STX Control (0.060-0.090)	0.600 Abs	0.073 µg/L	51.238 %Abs	RK1:29->E02@2
STX Control (0.060-0.090)	0.589 Abs [0.5945] {1.3 CV}	0.075 µg/L [0.074] {1.9 CV}	50.299 %Abs [50.769 %Abs]	RK1:29->F02@3

Statistic				
STX Std 0 [MEAN]	1.1710	0.0005		
STX Std 0 [SD]	0.0113	0.0007		
STX Std 0 [%CV]	0.9662	141.4214		
STX Std 1 [MEAN]	0.9820	0.0210		
STX Std 1 [SD]	0.0141	0.0014		
STX Std 1 [%CV]	1.4401	6.7344		
STX Std 1 [%DIFF]		5.0000		
STX Std 2 [MEAN]	0.7565	0.0470		
STX Std 2 [SD]	0.0205	0.0028		
STX Std 2 [%CV]	2.7107	6.0179		
STX Std 2 [%DIFF]		-6.0000		
STX Std 3 [MEAN]	0.4695	0.1050		
STX Std 3 [SD]	0.0191	0.0057		
STX Std 3 [%CV]	4.0664	5.3875		
STX Std 3 [%DIFF]		5.0000		
STX Std 4 [MEAN]	0.2920	0.1955		
STX Std 4 [SD]	0.0071	0.0064		
STX Std 4 [%CV]	2.4216	3.2552		
STX Std 4 [%DIFF]		-2.2500		
STX Std 5 [MEAN]	0.1740			
STX Std 5 [SD]	0.0028			
STX Std 5 [%CV]	1.6255			

Name	Absorbance	Concentration	Interpretation	Position
STX Control (0.060-0.090) [MEAN]	0.5945	0.0740		
STX Control (0.060-0.090) [SD]	0.0078	0.0014		
STX Control (0.060-0.090) [%CV]	1.3084	1.9111		

Assay Curve

$$y = (A-D)/(1+(x/C)^B) + D$$

Weight: NONE

A = 1.1672

B = 1.3602

C = 0.067938

D = 0.084359

R2 coef = 0.99888

50% = 0.076

