



## Anatoxin-A ELISA Summary Report

Office of Water Quality - Watershed Assessment and Planning Branch

Sample #	Location	Date Collected	Date Analyzed	Conc. (ppb)
AB26593	Mississinewa Miami SRA	8/15/2016	8/17/2016	< 0.15
AB26594	Potato Creek SP	8/15/2016	8/17/2016	< 0.15
AB26591	Mississinewa (Field Duplicate)	8/15/2016	8/17/2016	0.307
AB26592	Field Blank	8/15/2016	8/17/2016	< 0.15
AB26595	Lost Bridge West SRA	8/16/2016	8/17/2016	< 0.15
AB26595LD	Lost Bridge (Lab Duplicate)	8/16/2016	8/17/2016	< 0.15
20160817LB	Lab Blank	8/16/2016	8/17/2016	< 0.15



# Assay Calibration Report

## Assay Information

Assay Name: Anatoxin a ELISA (2 rep) Units: ng/mL  
Assay Mode: 4-Parameter Logistic # of decimals: 3  
Normal: 0.150 - 5.000 Assay Description: SA

## Controls:

Normal Control

## Standards:

Std1, Concentration = 0.000, Minimum number to use: 2  
Std2, Concentration = 0.150, Minimum number to use: 2  
Std3, Concentration = 0.400, Minimum number to use: 2  
Std4, Concentration = 1.000, Minimum number to use: 2  
Std5, Concentration = 2.500, Minimum number to use: 2  
Std6, Concentration = 5.000, Minimum number to use: 2

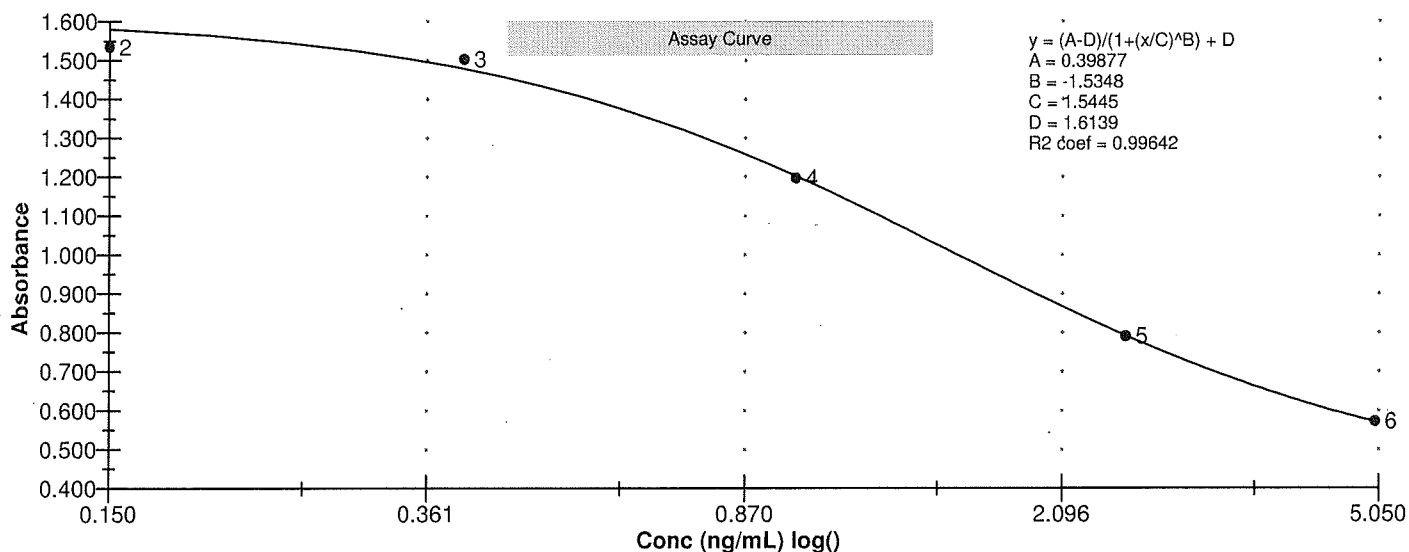
Curve valid interval: 7 days 0 hours

Axis Mode: Y = Abs, X = Log(Conc)

## Assay Calibration and Statistics

Name	Absorbance	Concentration	Position
8/17/2016 4:48:32 PM			
Std1	1.738 Abs	< 0.000 ng/mL	A01
Std1	1.542 Abs	0.255 ng/mL	B01
Std2	1.533 Abs	0.276 ng/mL	C01
Std2	1.536 Abs	0.269 ng/mL	D01
Std3	1.484 Abs	0.387 ng/mL	E01
Std3	1.523 Abs	0.300 ng/mL	F01
Std4	1.214 Abs	0.971 ng/mL	G01
Std4	1.179 Abs	1.056 ng/mL	H01
Std5	0.811 Abs	2.385 ng/mL	A02
Std5	0.770 Abs	2.638 ng/mL	B02
Std6	0.558 Abs	> 5.000 ng/mL	C02
Std6	0.585 Abs	4.705 ng/mL	D02
8/17/2016 4:48:32 PM			
Normal Control	1.359 Abs	0.651 ng/mL	F02
Normal Control	1.323 Abs	0.727 ng/mL	E02

Name	Mean Abs	SD Abs	CV Abs	Mean Conc	SD Conc	CV Conc	Diff Conc
Std1	1.640	0.139	8.45				
Std2	1.535	0.002	0.14	0.272	0.005	1.82	81.33
Std3	1.503	0.028	1.83	0.344	0.062	17.91	-14.00
Std4	1.197	0.025	2.07	1.013	0.060	5.93	1.30
Std5	0.790	0.029	3.67	2.511	0.179	7.12	0.44
Std6	0.572	0.019	3.34				-100.00
Normal Control	1.341	0.025	1.90	0.689	0.054	7.80	





## Test Report

### Test Information

Name/ID	Assay	Absorbance	Concentration	Interpretation	Reference	Position
8/17/2016 4:48:32 PM						
Std1	Anatoxin a ELISA (2 rep)	1.738 Abs	< 0.000 ng/mL		0.000	A01
Std1	Anatoxin a ELISA (2 rep)	1.542 Abs	0.255 ng/mL		0.000	B01
Std2	Anatoxin a ELISA (2 rep)	1.533 Abs	0.276 ng/mL		0.150	C01
Std2	Anatoxin a ELISA (2 rep)	1.536 Abs	0.269 ng/mL		0.150	D01
Std3	Anatoxin a ELISA (2 rep)	1.484 Abs	0.387 ng/mL		0.400	E01
Std3	Anatoxin a ELISA (2 rep)	1.523 Abs	0.300 ng/mL		0.400	F01
Std4	Anatoxin a ELISA (2 rep)	1.214 Abs	0.971 ng/mL		1.000	G01
Std4	Anatoxin a ELISA (2 rep)	1.179 Abs	1.056 ng/mL		1.000	H01
Std5	Anatoxin a ELISA (2 rep)	0.811 Abs	2.385 ng/mL		2.500	A02
Std5	Anatoxin a ELISA (2 rep)	0.770 Abs	2.638 ng/mL		2.500	B02
Std6	Anatoxin a ELISA (2 rep)	0.558 Abs	> 5.000 ng/mL		5.000	C02
Std6	Anatoxin a ELISA (2 rep)	0.585 Abs	4.705 ng/mL		5.000	D02
Normal Control	Anatoxin a ELISA (2 rep)	1.323 Abs	0.727 ng/mL			E02
Normal Control	Anatoxin a ELISA (2 rep)	1.359 Abs	0.651 ng/mL			F02
AB26593	Anatoxin a ELISA (2 rep)	1.877 Abs	< 0.000 ng/mL	Out(LR)	0.150 - 5.000	G02
AB26593	Anatoxin a ELISA (2 rep)	1.852 Abs [1.8645] {0.9 C	< 0.000 ng/mL [< 0.000]	Out(LR) [Out(LR)]	0.150 - 5.000	H02
AB26594	Anatoxin a ELISA (2 rep)	1.725 Abs	< 0.000 ng/mL	Out(LR)	0.150 - 5.000	A03
AB26594	Anatoxin a ELISA (2 rep)	1.696 Abs [1.7105] {1.2 C	< 0.000 ng/mL [< 0.000]	Out(LR) [Out(LR)]	0.150 - 5.000	B03
AB26591	Anatoxin a ELISA (2 rep)	1.564 Abs	0.199 ng/mL		0.150 - 5.000	C03
AB26591	Anatoxin a ELISA (2 rep)	1.476 Abs [1.5200] {4.1 C	0.405 ng/mL [0.307] {48.2 CV}		0.150 - 5.000	D03
AB26592	Anatoxin a ELISA (2 rep)	1.918 Abs	< 0.000 ng/mL	Out(LR)	0.150 - 5.000	E03
AB26592	Anatoxin a ELISA (2 rep)	1.612 Abs [1.7650] {12.3	0.023 ng/mL [< 0.000]	Low [Out(LR)]	0.150 - 5.000	F03
AB26595	Anatoxin a ELISA (2 rep)	1.720 Abs	< 0.000 ng/mL	Out(LR)	0.150 - 5.000	G03
AB26595	Anatoxin a ELISA (2 rep)	1.629 Abs [1.6745] {3.8 C	< 0.000 ng/mL [< 0.000]	Out(LR) [Out(LR)]	0.150 - 5.000	H03
AB26595LD	Anatoxin a ELISA (2 rep)	1.605 Abs	0.063 ng/mL	LOW	0.150 - 5.000	A04
AB26595LD	Anatoxin a ELISA (2 rep)	1.633 Abs [1.6190] {1.2 C	< 0.000 ng/mL [< 0.000]	Out(LR) [Out(LR)]	0.150 - 5.000	B04
20160817LB	Anatoxin a ELISA (2 rep)	1.822 Abs	< 0.000 ng/mL	Out(LR)	0.150 - 5.000	C04
20160817LB	Anatoxin a ELISA (2 rep)	1.646 Abs [1.7340] {7.2 C	< 0.000 ng/mL [< 0.000]	Out(LR) [Out(LR)]	0.150 - 5.000	D04

The data in this report is preliminary without a quality control report. This data is not warranted for accuracy or other purposes.

*David Jordan*

Laboratory Analyst Signature

*8/18/16*

Date