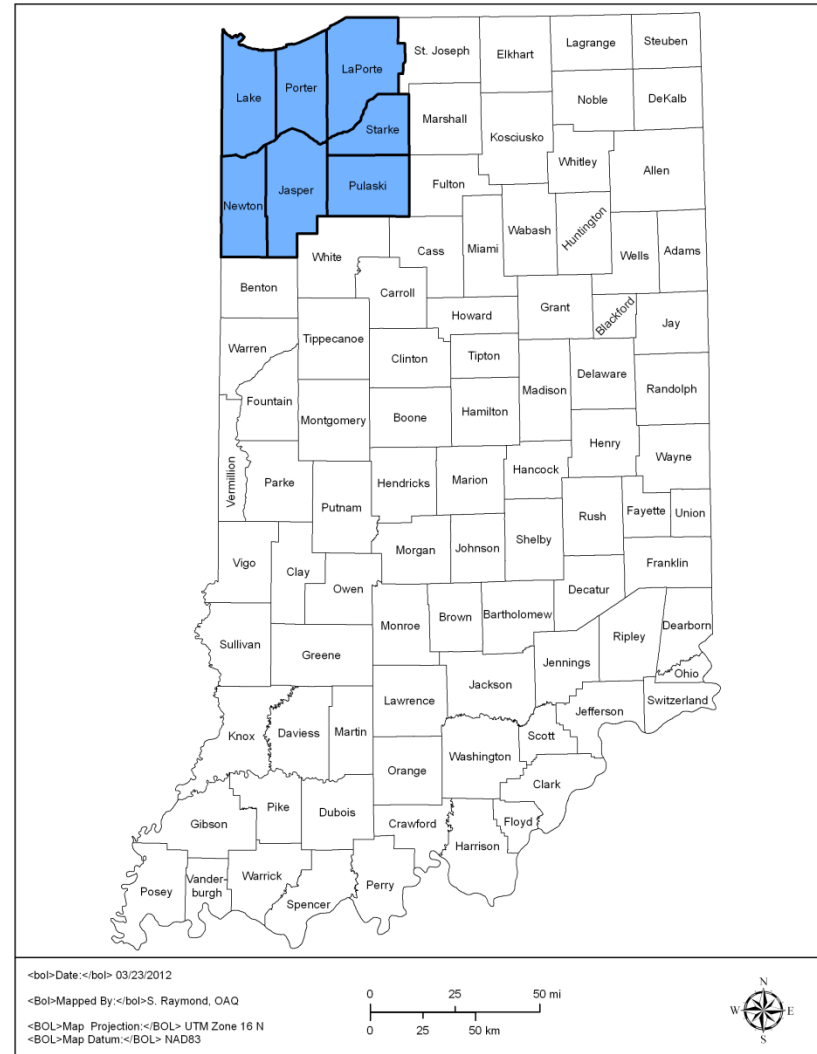




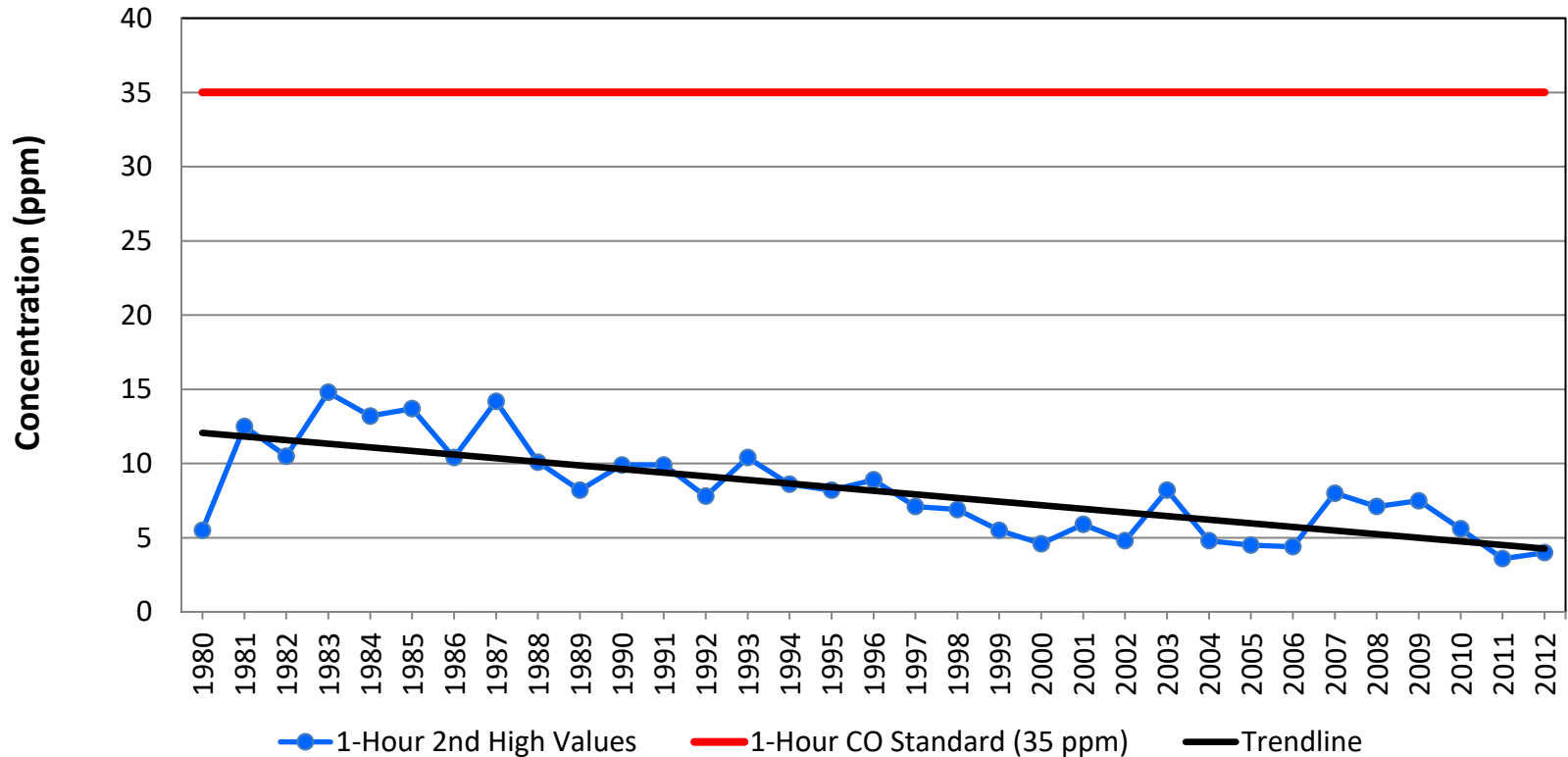
Status of Indiana Air Quality Northwest Indiana Region





Carbon Monoxide

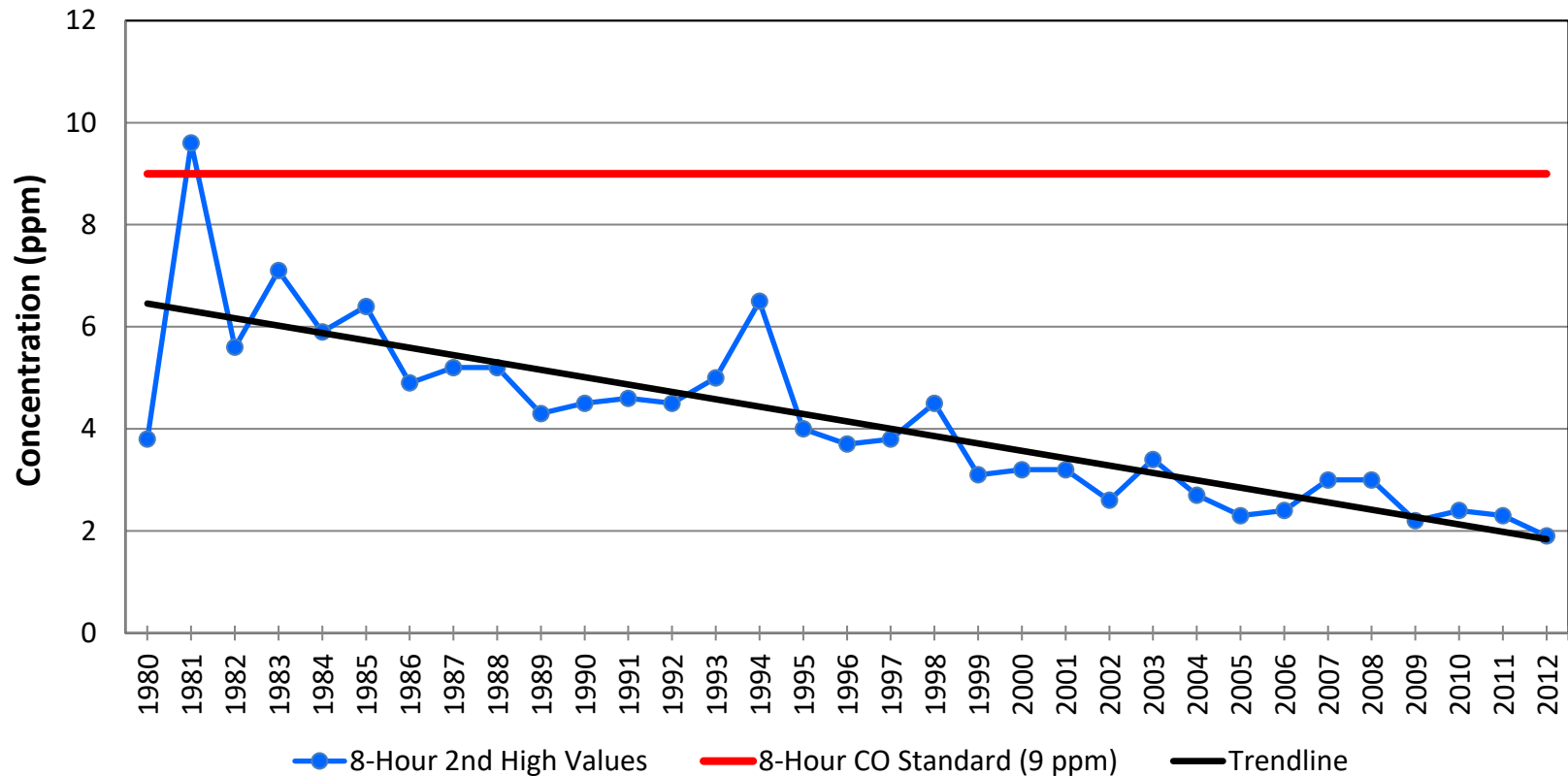
1-Hour CO 2nd High Values
Northwest Indiana





Carbon Monoxide

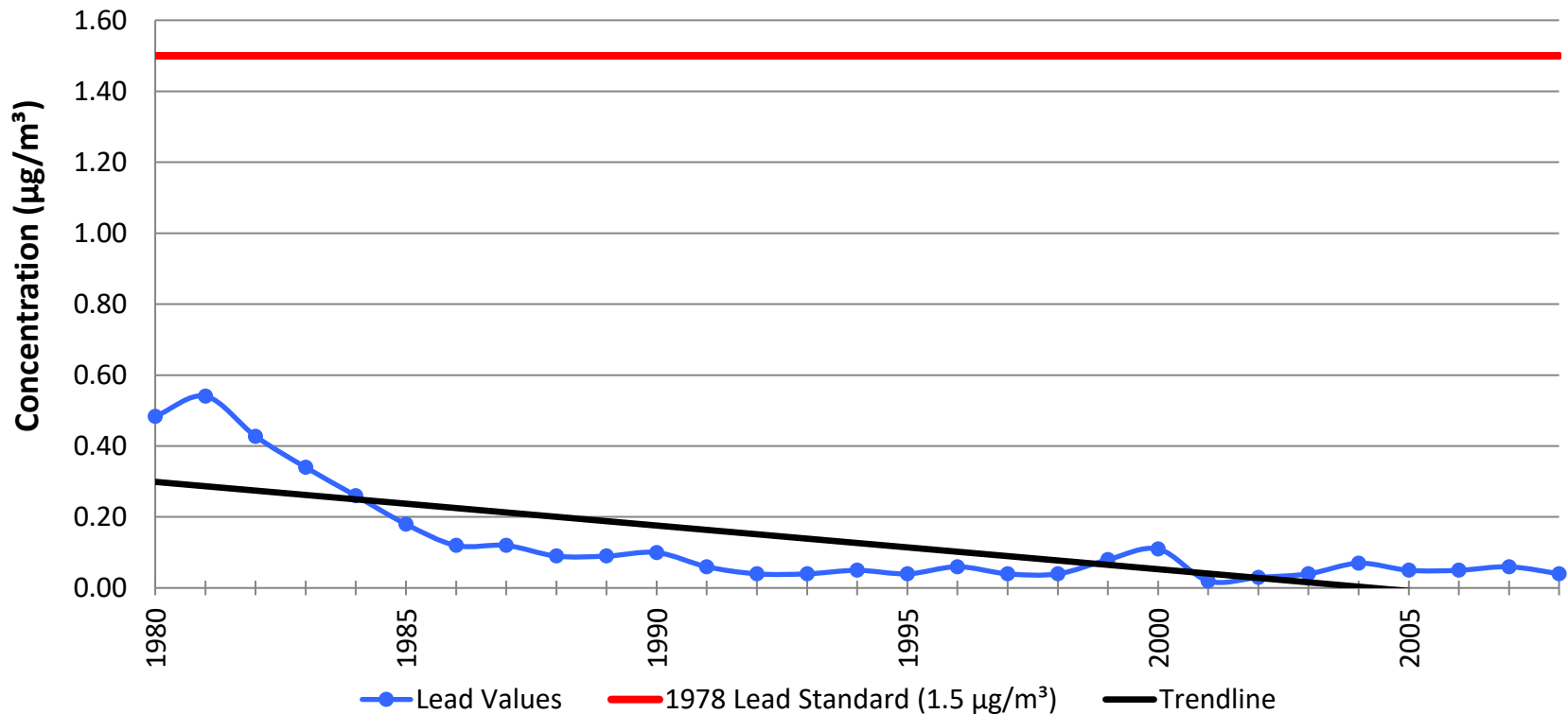
8-Hour CO 2nd High Values
Northwest Indiana





Lead

Lead Highest Annual Quarterly Values Northwest Indiana

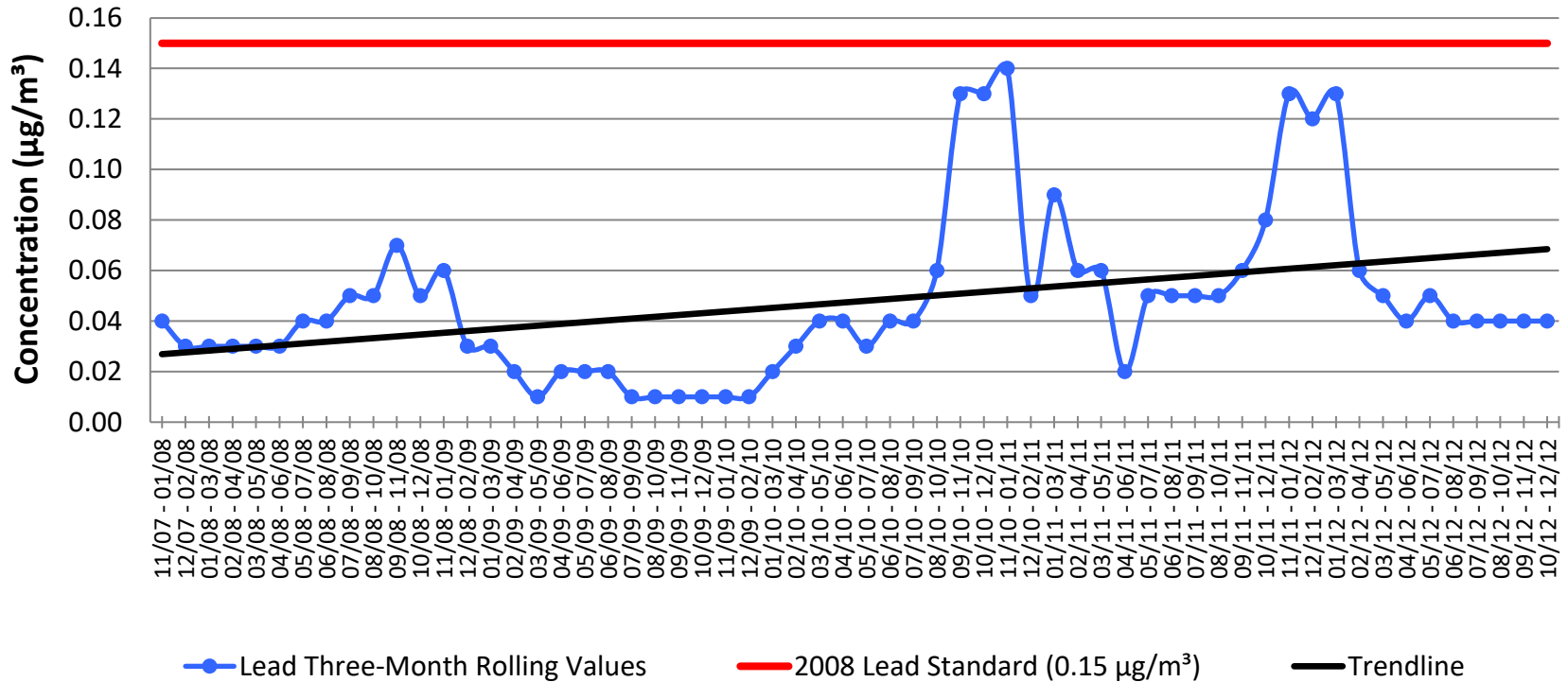


* Lead Standard Lowered to 0.15 µg/m³ in 2008.



Lead

**Highest Lead Three-Month Rolling Average Value
Northwest Indiana**

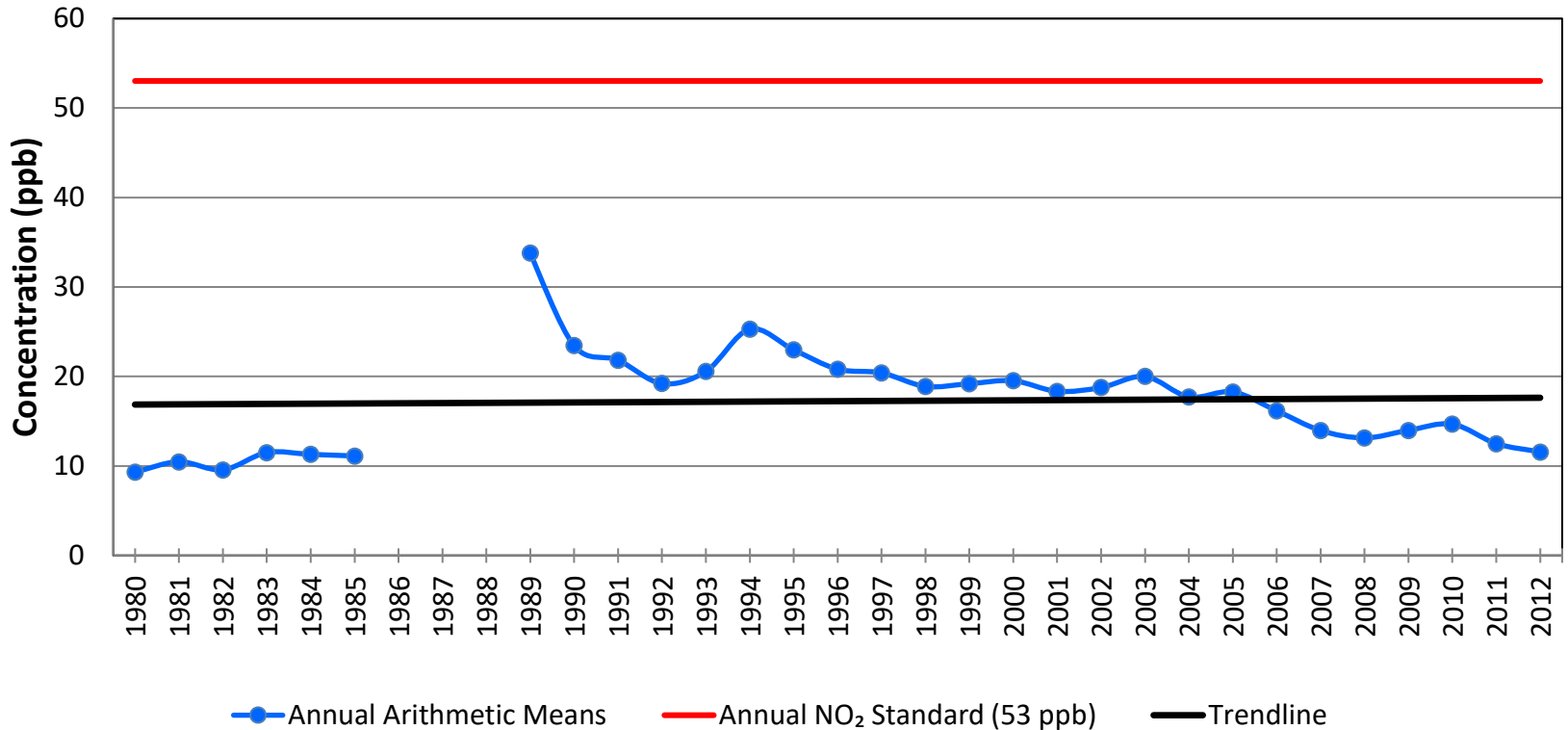


* Lead Standard Lowered to 0.15 µg/m³ in 2008.



Nitrogen Dioxide

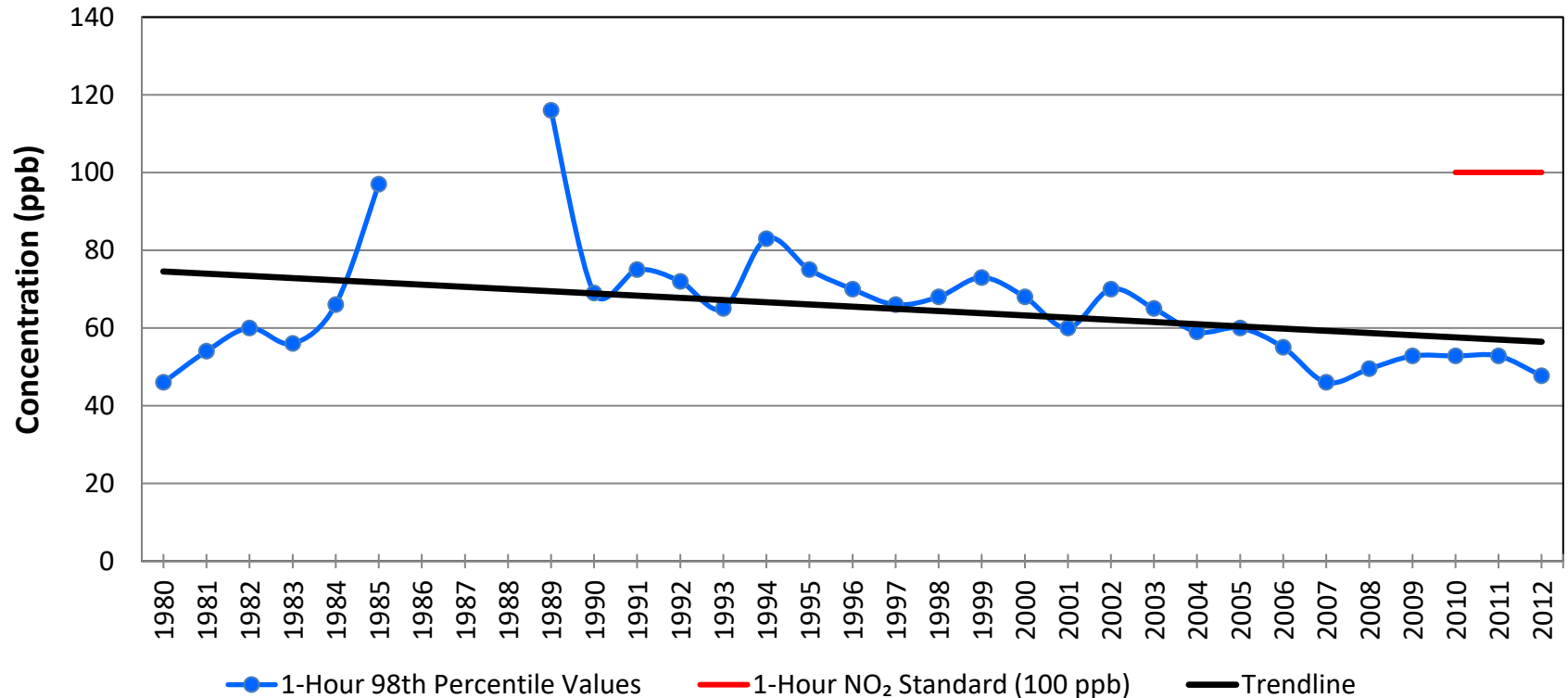
Annual Arithmetic Mean NO₂ Values
Northwest Indiana





Nitrogen Dioxide

1-Hour NO₂ 98th Percentile Values Northwest Indiana

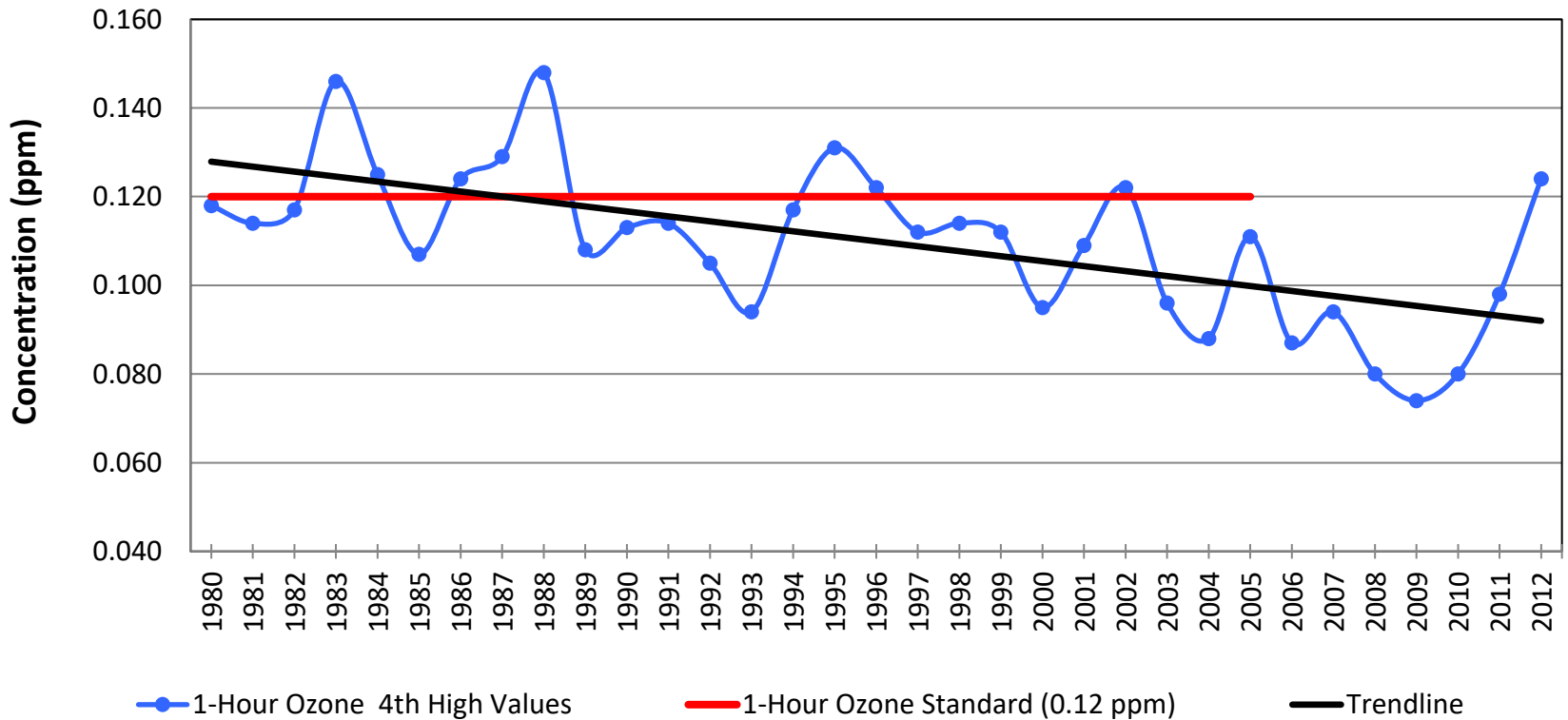


* 1-Hour NO₂ Standard Established in 2010.



Ozone

1-Hour Ozone 4th High Values Northwest Indiana

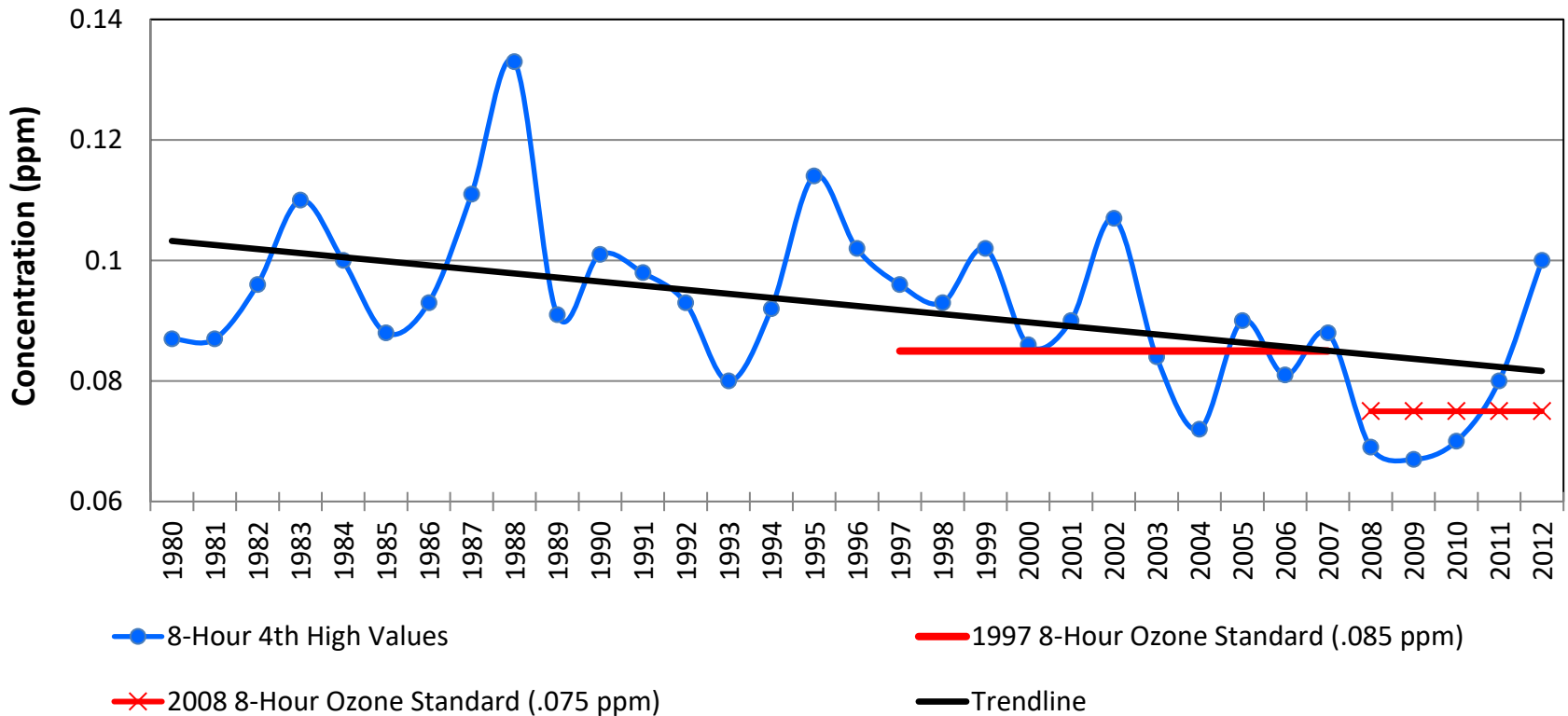


* 1-Hour Ozone Standard Revoked in 2005.



Ozone

8-Hour Ozone 4th High Values Northwest Indiana

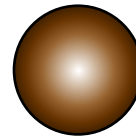
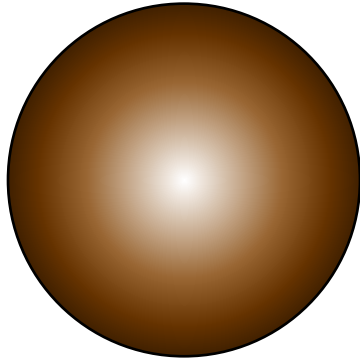


* 8-Hour Ozone Standard Established in 1997.



Changing Particulate Standards

Name	Total Suspended Particle (TSP)	PM ₁₀	PM _{2.5}
Dates	1970-1987	1983-Present	1999-Present
Regulated Size	30 μm	10 μm	2.5 μm
24-Hour Standard	260	150	65 (1999-2005) 35 (2006-Present)
Annual Standard	75	50	15

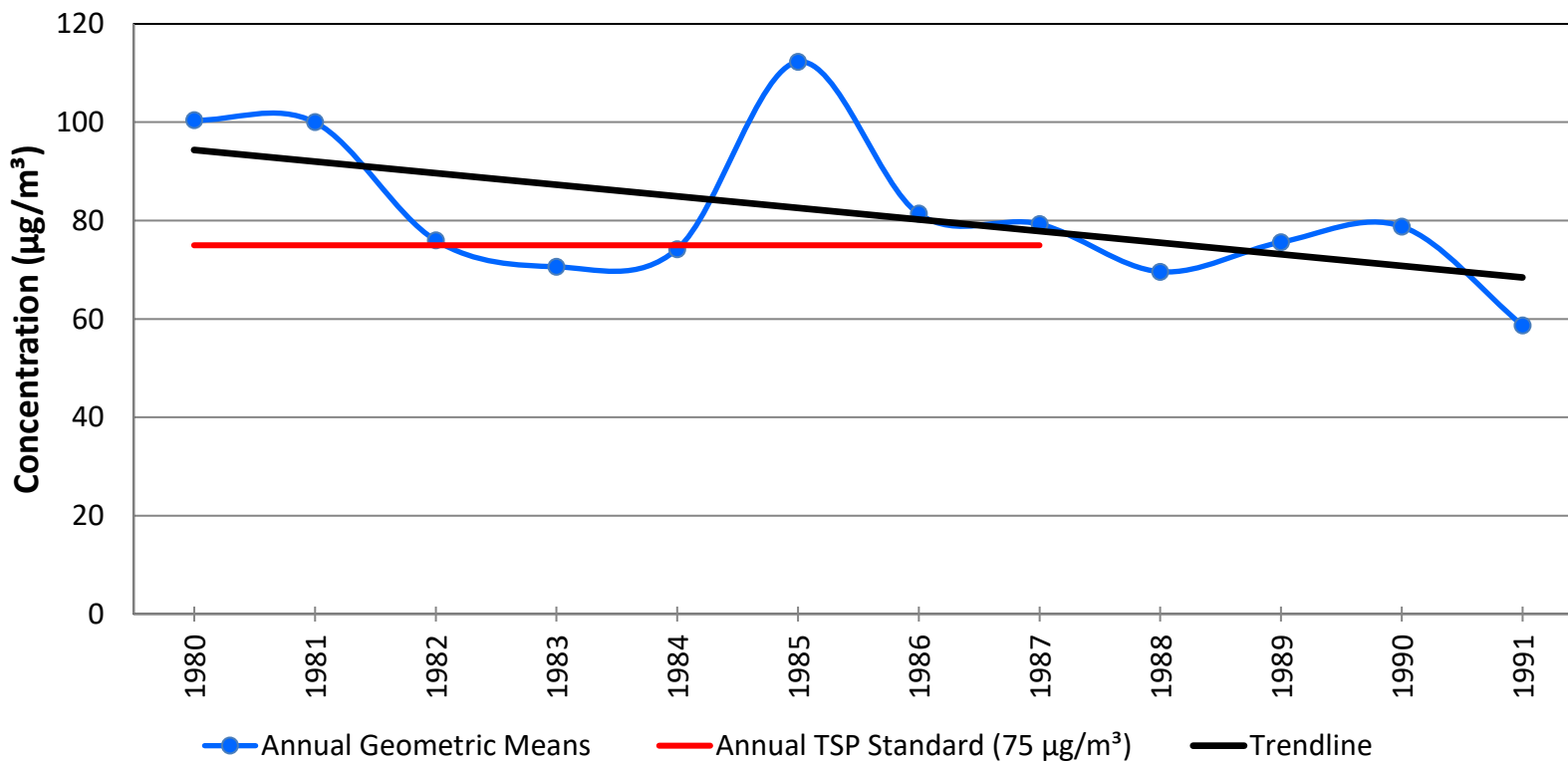


*μm = micrograms



Particulate Matter

Annual Geometric Mean TSP Values Northwest Indiana

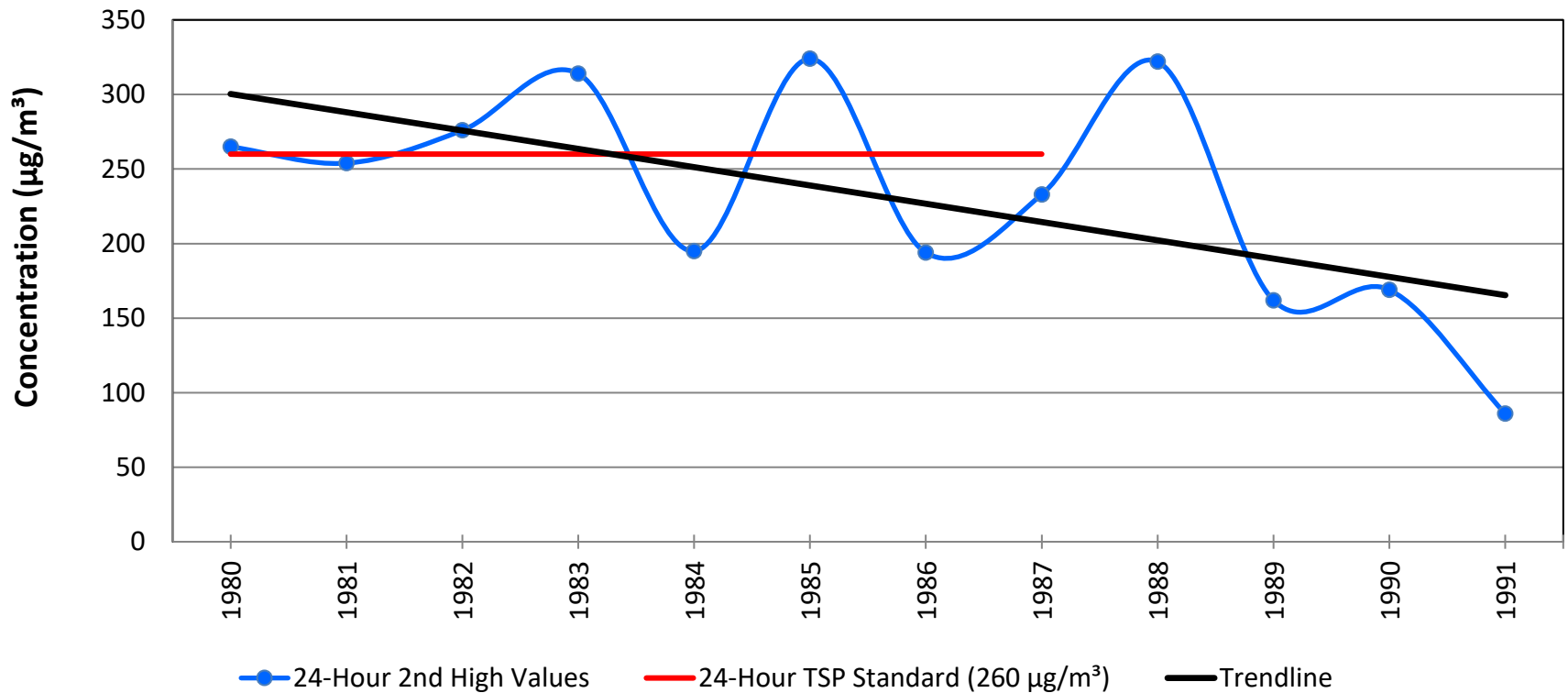


*Annual TSP Standard Revoked in 1987.



Particulate Matter

24-Hour TSP 2nd High Values Northwest Indiana

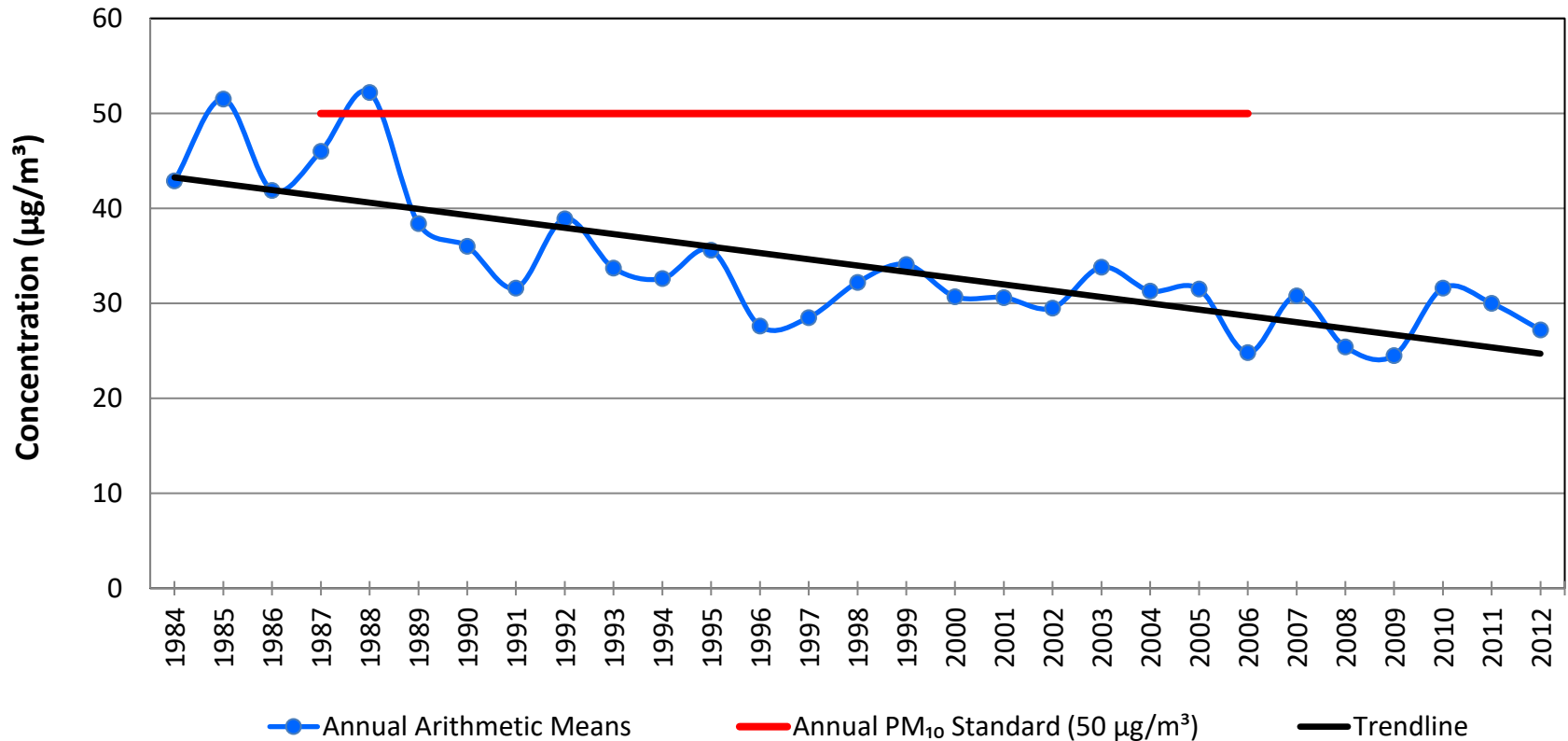


*24-Hour TSP Standard Revoked in 1987.



Particulate Matter

Annual Arithmetic Mean PM₁₀ Values Northwest Indiana

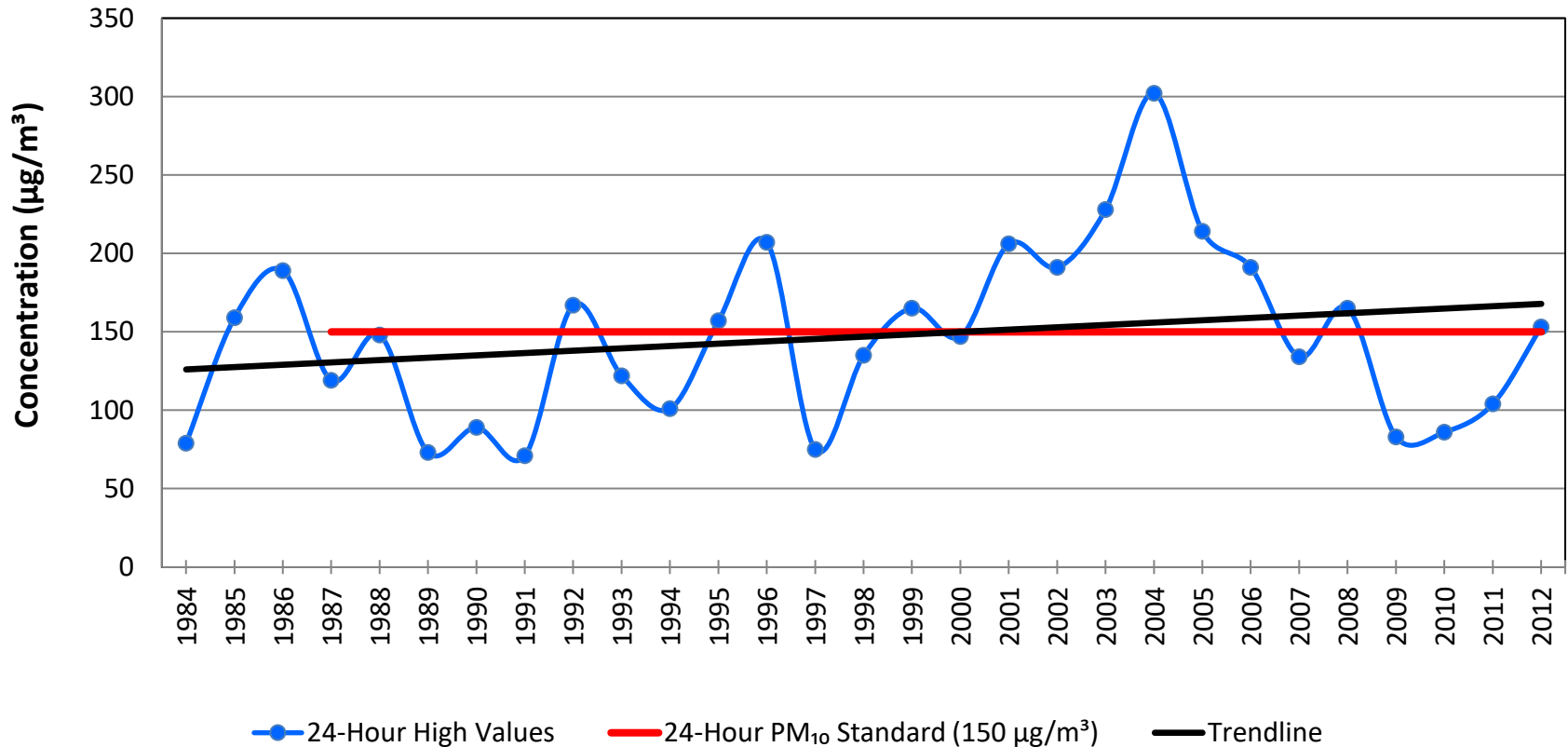


*Annual PM₁₀ Standard Established in 1987 and Revoked in 2006.



Particulate Matter

24-Hour PM₁₀ High Values
Northwest Indiana

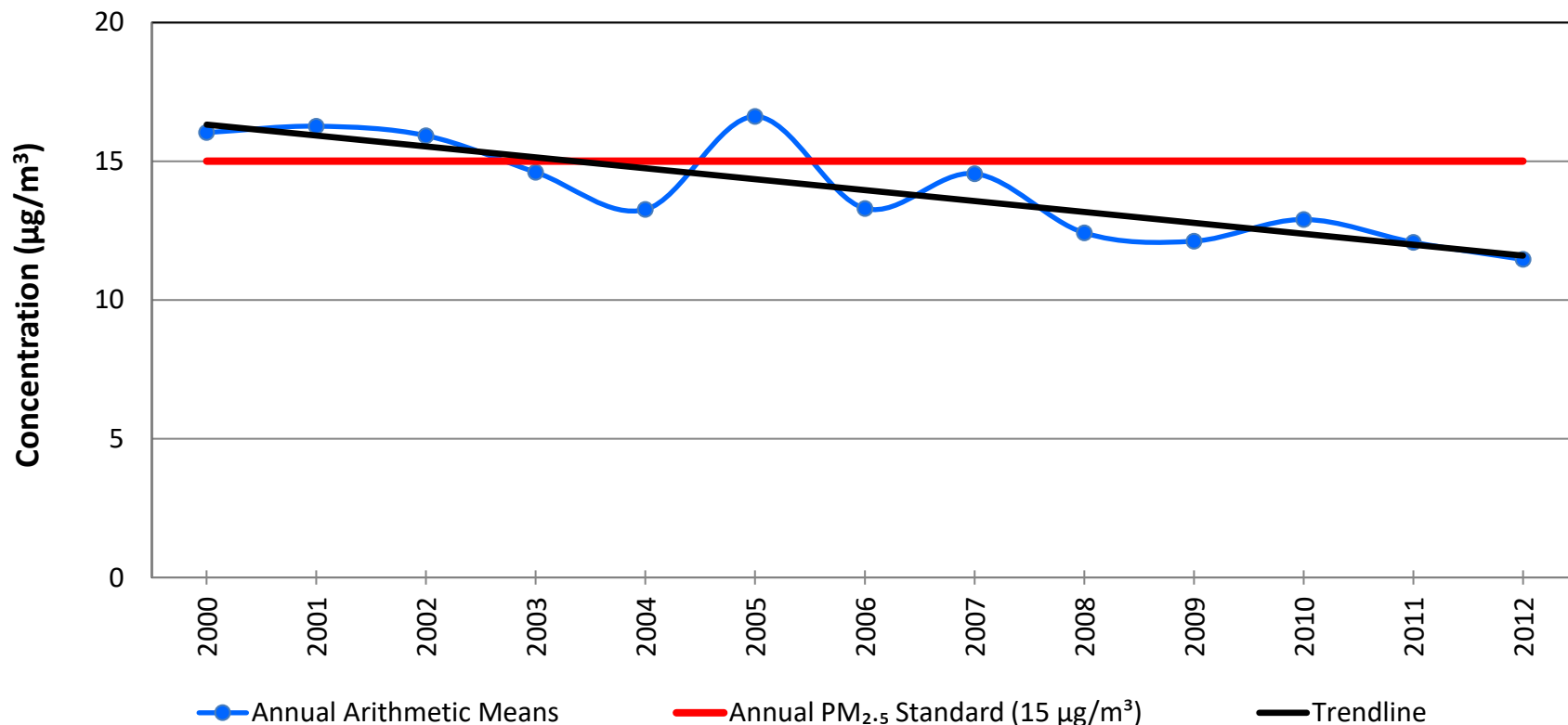


*24-Hour PM₁₀ Standard Established in 1987.



Particulate Matter

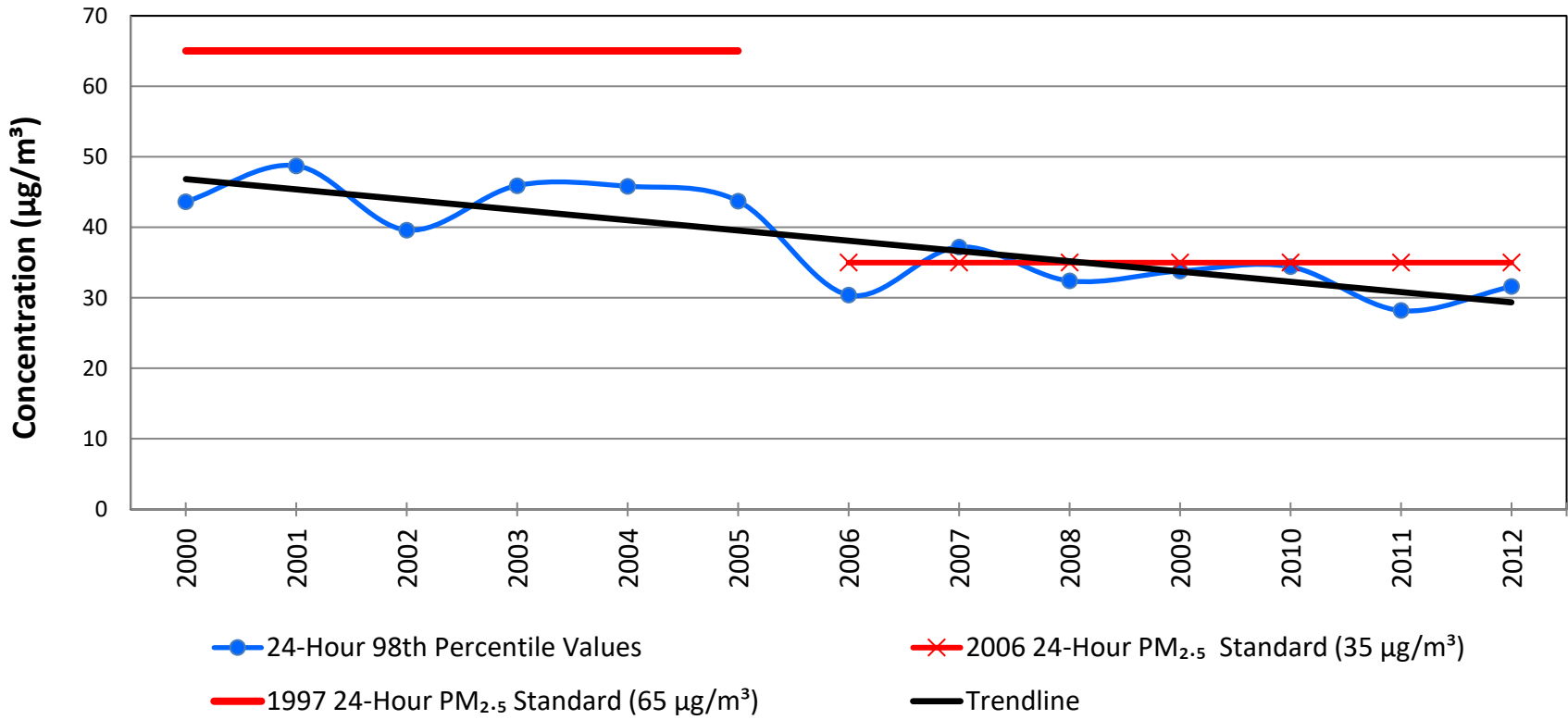
Annual Arithmetic Mean PM_{2.5} Values
Northwest Indiana





Particulate Matter

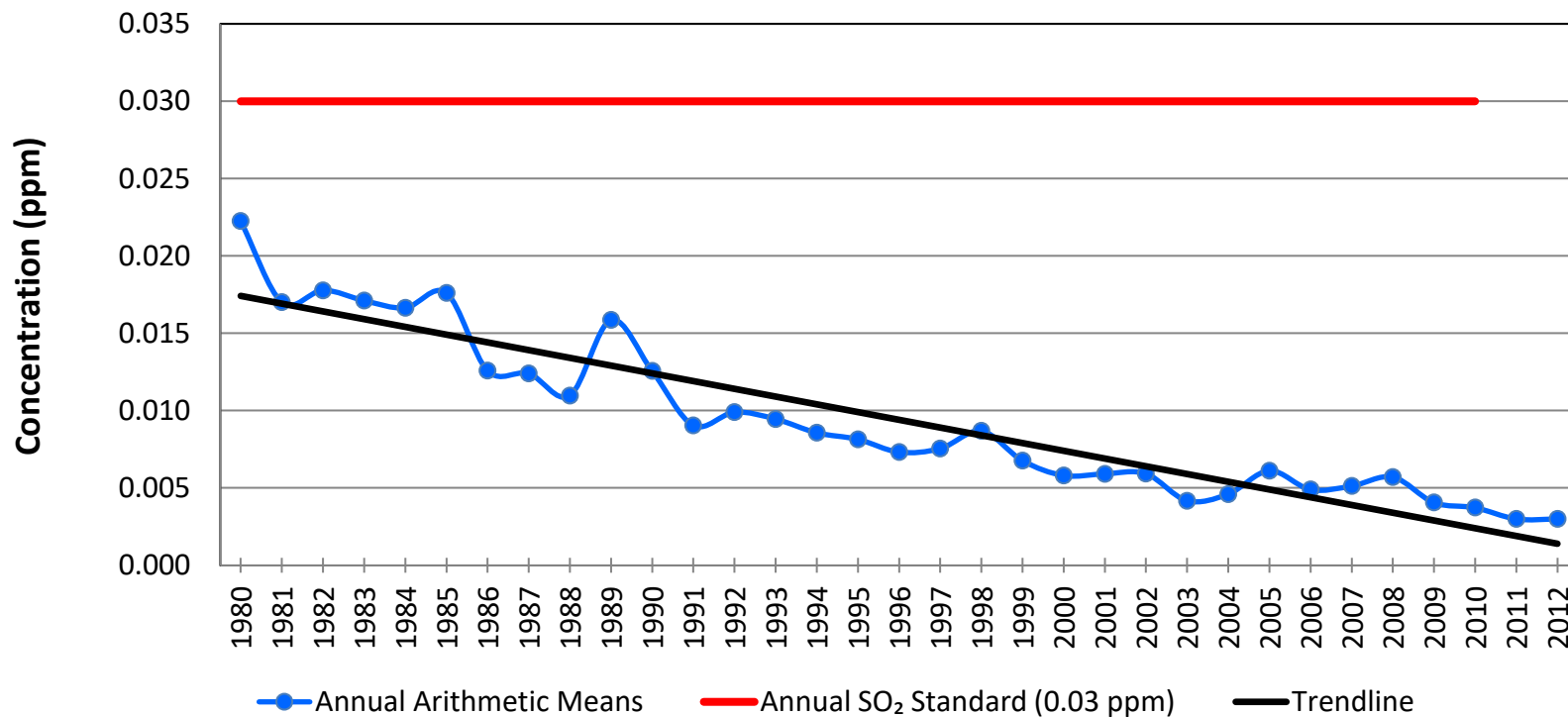
24-Hour PM_{2.5} 98th Percentile Values Northwest Indiana





Sulfur Dioxide

Annual Arithmetic Mean SO₂ Values Northwest Indiana

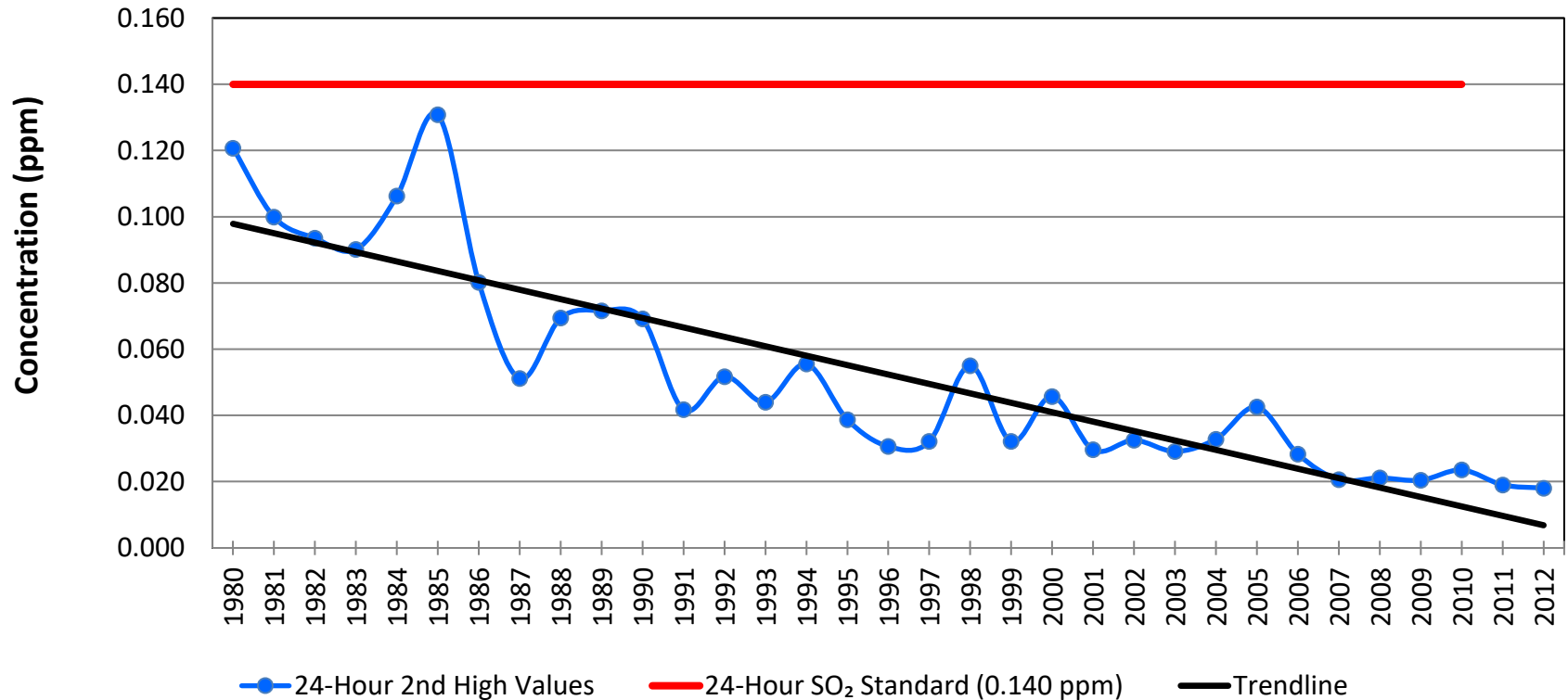


* Annual SO₂ Standard Revoked in 2010.



Sulfur Dioxide

24-Hour SO₂ 2nd High Values Northwest Indiana

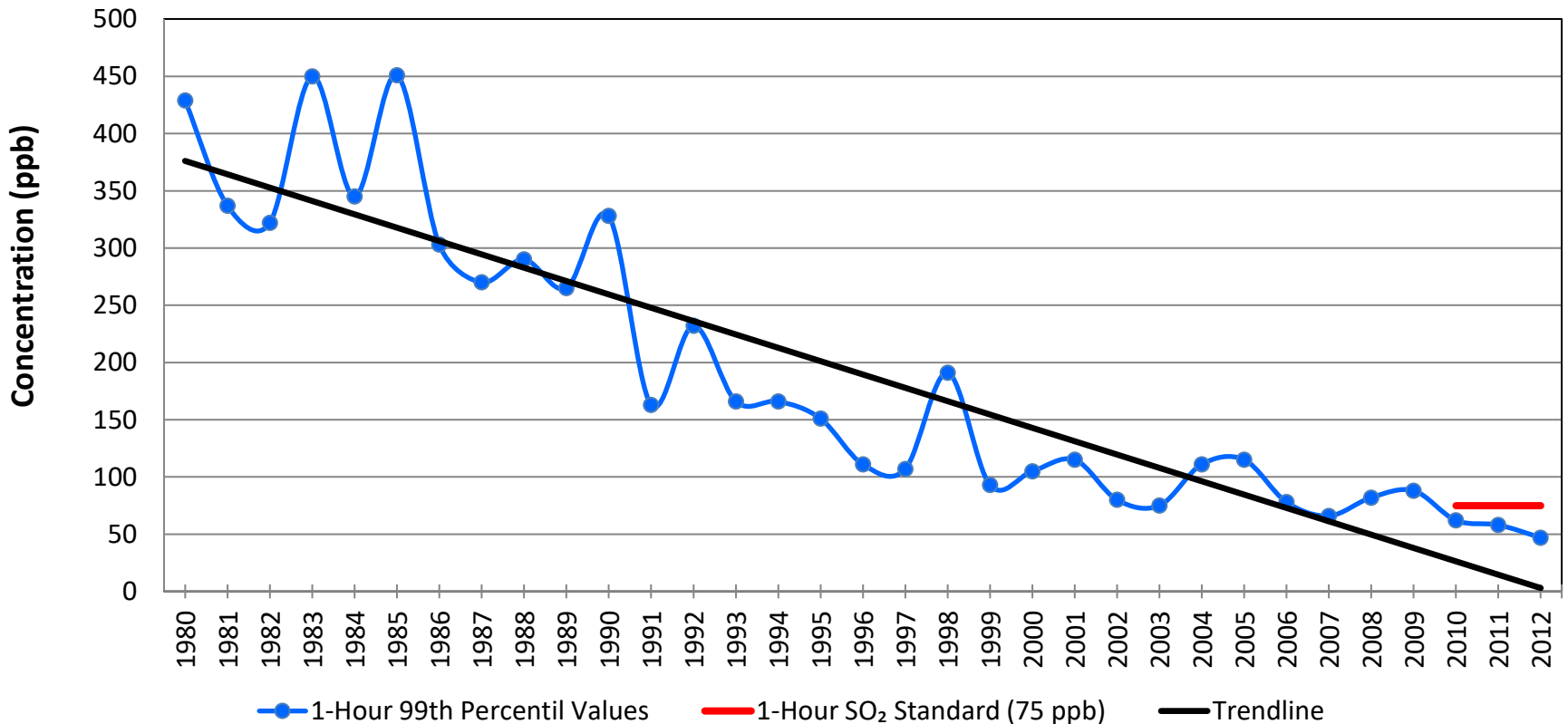


* 24-Hour SO₂ Standard Revoked in 2010.



Sulfur Dioxide

Highest 1-Hour SO₂ 99th Percentile Values
Northwest Indiana



* 1-Hour SO₂ Standard Established in 2010.



Air Quality and You

- To learn more about your air quality and what you can do to help, visit:

Smogwatch.IN.gov

- To acquire additional information about air quality in Indiana and IDEM's role, visit:

www.idem.IN.gov



Contact Information for IDEM's Office of Air Quality

- To call please dial:
(317) 233-0178
- To write, please use this mailing address:
**IDEM, Office of Air Quality
100 North Senate Avenue
Indianapolis, IN 46204**