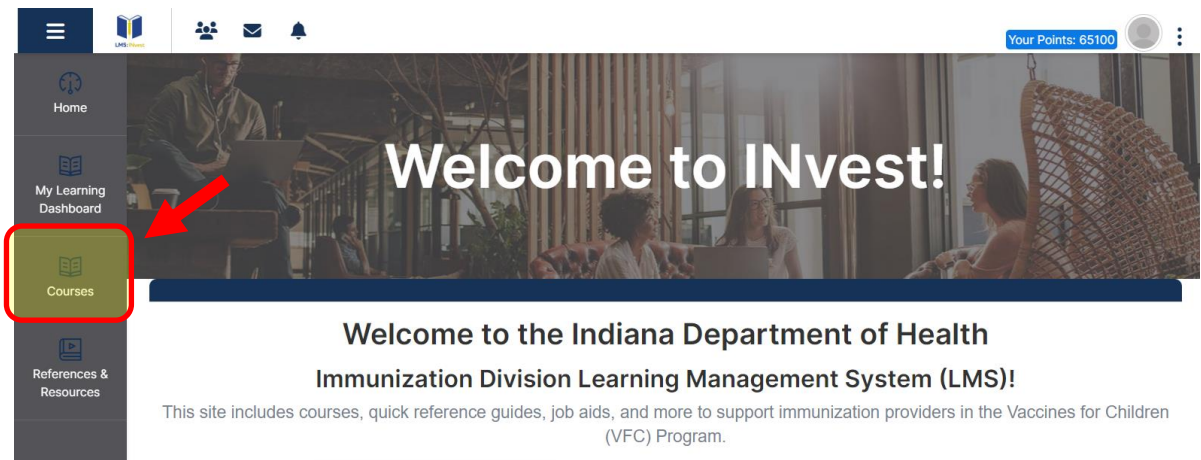




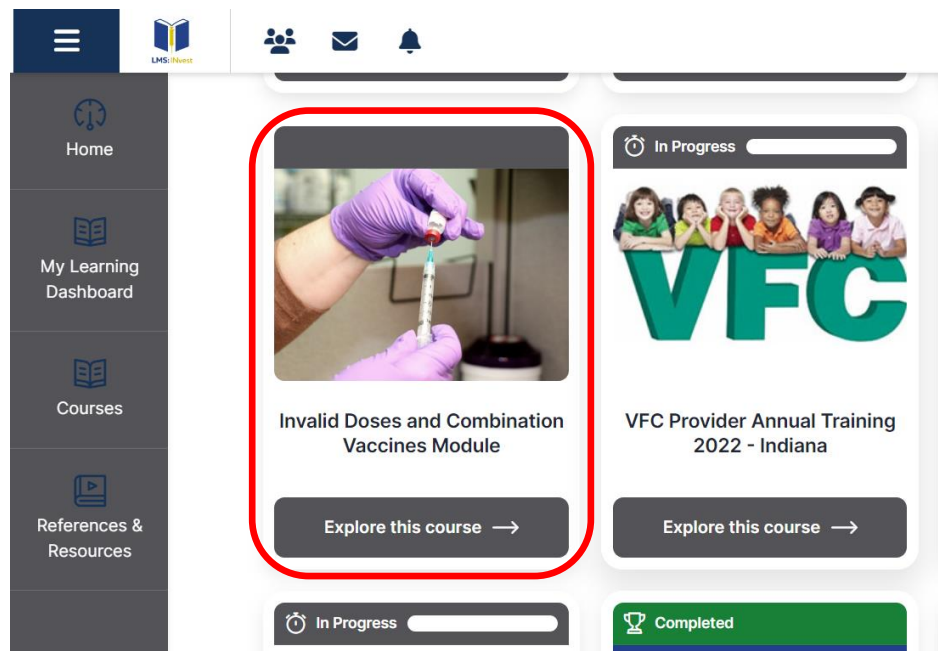
LMS INvest Training

Invalid Doses

1. Login into your LMS <https://indianalms.stchealth.us/login3>
2. To access the different training courses we have available, you will need to click on the "Courses" tab.



3. Choose the "Invalid Dose and Combination Vaccines" module.



4. Start the Invalid doses training. If you have any questions – please see the course navigation guide [here: https://www.in.gov/health/immunization/files/Course-Navigation-Instructions-INvest-v2.pdf](https://www.in.gov/health/immunization/files/Course-Navigation-Instructions-INvest-v2.pdf)